

**TRACT 37299 - Portion of Blocks 51, and 52, Breton Sound Area, Plaquemines Parish, Louisiana**

The beds and bottoms of all water bodies belonging to the State of Louisiana located in Blocks 51, and 52, Breton Sound Area, together with any present lands formed by accretion to the shoreline or islands formed therein, located in Plaquemines Parish, Louisiana, owned by and not presently under mineral lease as of May 11, 2005, from the State of Louisiana, the geographical area of which is more fully described as follows: Beginning at a point on the South line of Block 52, Breton Sound Area, and being the most Southerly Southwest corner of State Lease No. 17861, having Coordinates of X = 2,687,600.00 and Y = 278,080.00; thence West 7,857.20 feet along the South line of said Block to a point having Coordinates of X = 2,679,742.80 and Y = 278,080.00; thence Northwesterly on a straight line to a point on the North line of Block 51, Breton Sound Area, having Coordinates of X = 2,678,166.42 and Y = 292,830.00; thence East 3,833.58 feet to a point on the North line of said Block 52, also being the Northwest corner of State Lease No. 17675 having Coordinates of X = 2,682,000.00 and Y = 292,830.00; thence South 20 degrees 19 minutes 23 seconds East 3,599.05 feet along the West line of said State Lease No. 17675 to its Southern corner, said corner also being the most Westerly Northwest corner of State Lease No. 12806, as amended, having Coordinates of X = 2,683,250.00 and Y = 289,455.00; thence along the boundary of said State Lease No. 12806, as amended, the following courses: South 1,200.00 feet to a point having Coordinates of X = 2,683,250.00 and Y = 288,255.00; South 79 degrees 02 minutes 24 seconds East 2,050.87 feet to a point having Coordinates of X = 2,685,263.46 and Y = 287,865.08; and Southeasterly along an arc, with a radius of 6,073.16 feet, whose center is X = 2,686,295.24 and Y = 293,849.95 to the Northwest corner of State Lease No. 17861, having Coordinates of X = 2,686,449.78 and Y = 287,778.76; thence along the boundary of said State Lease No. 17861 the following courses: South 10 degrees 07 minutes 29 seconds West 4,265.18 feet to a point having Coordinates of X = 2,685,700.00 and Y = 283,580.00; South 81 degrees 24 minutes 59 seconds East 2,680.02 feet to a point having Coordinates of X = 2,688,350.00 and Y = 283,180.00; and South 08 degrees 21 minutes 57 seconds West 5,154.85 feet to the point of beginning, containing approximately **2,279.85 acres**, all as more particularly outlined on a plat on file in the Office of Mineral Resources, Department of Natural Resources. All bearings, distances and coordinates are based on Louisiana Coordinate System of 1927, (North or South Zone).

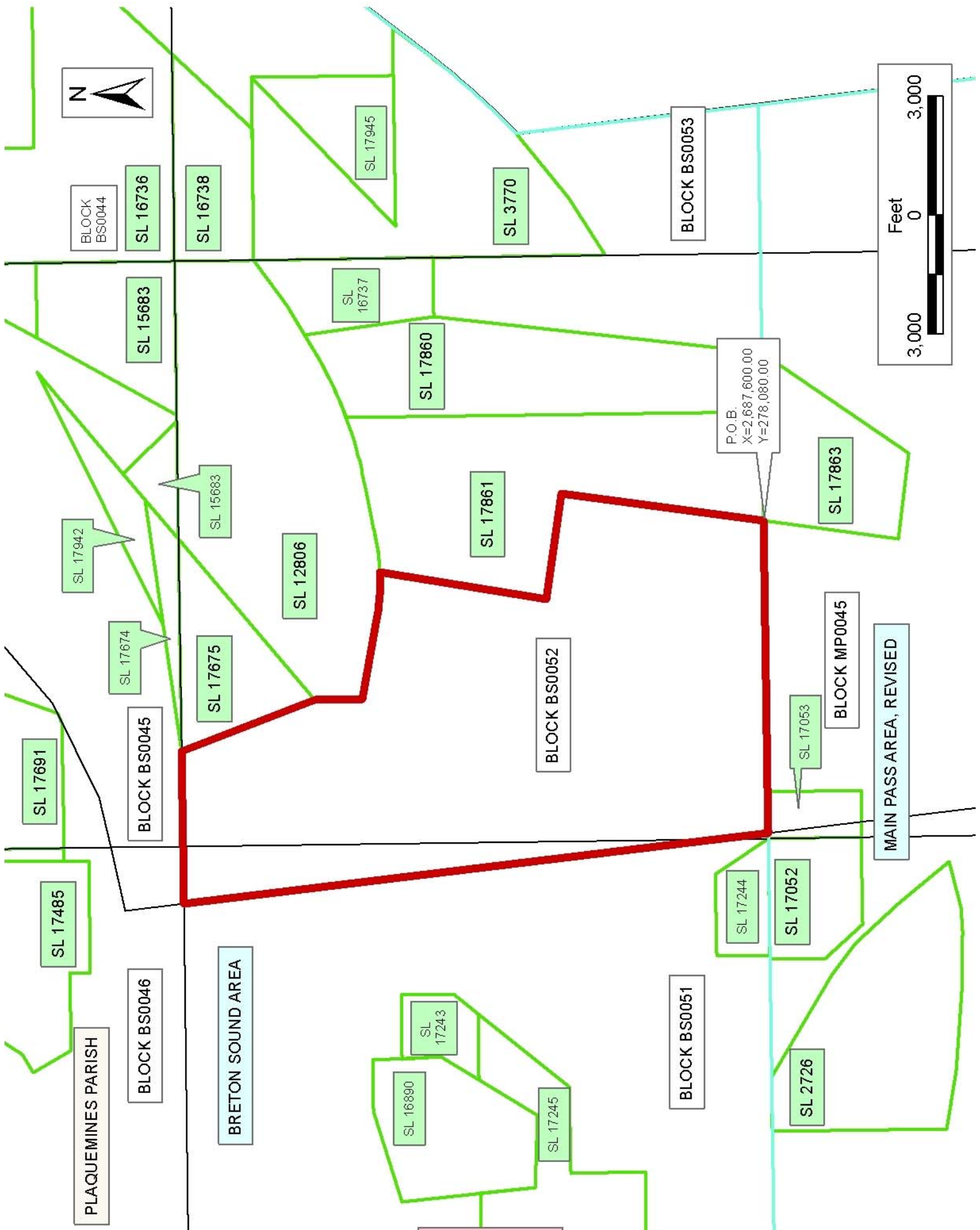
NOTE: The above description of the Tract nominated for lease has been provided and corrected, where required, exclusively by the nomination party. Any mineral lease selected from this Tract and awarded by the Louisiana State Mineral Board shall be without warranty of any kind, either express, implied, or statutory, including, but not limited to, the implied warranties of merchantability and fitness for a particular purpose. Should the mineral lease awarded by the Louisiana State Mineral Board be subsequently modified, cancelled or abrogated due to the

existence of conflicting leases, operating agreements, private claims or other future obligations or conditions which may affect all or any portion of the leased Tract, it shall not relieve the Lessee of the obligation to pay any bonus due thereon to the Louisiana State Mineral Board, nor shall the Louisiana State Mineral Board be obligated to refund any consideration paid by the Lessor prior to such modification, cancellation, or abrogation, including, but not limited to, bonuses, rentals and royalties.

NOTE: The State of Louisiana does hereby reserve, and this lease shall be subject to, the imprescriptible right of surface use in the nature of a servitude in favor of the Department of Natural Resources, including its Offices and Commissions, for the sole purpose of implementing, constructing, servicing and maintaining approved coastal zone management and/or restoration projects. Utilization of any and all rights derived under this lease by the mineral lessee, its agents, successors or assigns, shall not interfere with nor hinder the reasonable surface use by the Department of Natural Resources, its Offices or Commissions, as herein above reserved.

Applicant: Fleetwood Resources, Inc.

Bidder	Cash Payment	Price/Acre	Rental	Oil	Gas	Other



**TRACT 37300 - Portion of Block 45, Main Pass Area, Revised, Plaquemines Parish, Louisiana**

The beds and bottoms of all water bodies belonging to the State of Louisiana located in Block 45, Main Pass Area, Revised, together with any present lands formed by accretion to the shoreline or islands formed therein, located in Plaquemines Parish, Louisiana, owned by and not presently under mineral lease as of May 11, 2005, from the State of Louisiana, the geographical area of which is more fully described as follows: Beginning at a point on the North line of Block 45, Main Pass Area, Revised, said point also being the Northwest corner of State Lease No. 17863, having Coordinates of X = 2,687,600.00 and Y = 278,080.00; thence along the boundary of said State Lease No. 17863 the following courses: South 08 degrees 24 minutes 53 seconds West 3,416.78 feet to a point having Coordinates of X = 2,687,100.00 and Y = 274,699.99 and South 82 degrees 03 minutes 24 seconds East 959.20 feet to a point having Coordinates of X = 2,688,050.00 and Y = 274,567.43; thence South 1,247.43 feet to the most Northerly Northeast corner of State Lease No. 17862, having Coordinates of X = 2,688,050.00 and Y = 273,320.00; thence along the boundary of said State Lease No. 17862 the following courses: West 2,000.00 feet to a point having Coordinates of X = 2,686,050.00 and Y = 273,320.00 and South 2,615.00 feet to a point on the North line of State Lease No. 17864, having Coordinates of X = 2,686,050.00 and Y = 270,705.00; thence along the boundary of said State Lease No. 17864 the following courses: West 2,150.00 feet to a point having Coordinates of X = 2,683,900.00 and Y = 270,705.00; South 1,975.00 feet to a point having Coordinates of X = 2,683,900.00 and Y = 268,730.00; and East 5,556.34 feet to a point having Coordinates of X = 2,689,456.34 and Y = 268,730.00; thence South 5,400.00 feet to a point on the South line of said Block 45, having Coordinates of X = 2,689,456.34 and Y = 263,330.00; thence West 8,137.16 feet along the South line of said Block 45 to a point having Coordinates of X = 2,681,319.18 and Y = 263,330.00; thence Northwesterly on a straight line to a point on the South line of State Lease No. 17053, as amended, having Coordinates of X = 2,679,993.53 and Y = 275,734.00; thence along the boundary of said State Lease No. 17053, as amended, the following courses: East 786.47 feet to point having Coordinates of X = 2,680,780.00 and Y = 275,734.00 and North 2,346.00 feet to its Northeast corner, said corner also being a point on the North line of said Block 45, having Coordinates of X = 2,680,780.00 and Y = 278,080.00; thence East 6,820.01 feet along the North line of said Block 45 to the point of beginning, containing approximately **2,307.28 acres**, all as more particularly outlined on a plat on file in the Office of Mineral Resources, Department of Natural Resources. All bearings, distances and coordinates are based on Louisiana Coordinate System of 1927, (North or South Zone).

NOTE: The above description of the Tract nominated for lease has been provided and corrected, where required, exclusively by the nomination party. Any mineral lease selected from this Tract and awarded by the Louisiana State Mineral Board shall be without warranty of any kind,

either express, implied, or statutory, including, but not limited to, the implied warranties of merchantability and fitness for a particular purpose. Should the mineral lease awarded by the Louisiana State Mineral Board be subsequently modified, cancelled or abrogated due to the existence of conflicting leases, operating agreements, private claims or other future obligations or conditions which may affect all or any portion of the leased Tract, it shall not relieve the Lessee of the obligation to pay any bonus due thereon to the Louisiana State Mineral Board, nor shall the Louisiana State Mineral Board be obligated to refund any consideration paid by the Lessor prior to such modification, cancellation, or abrogation, including, but not limited to, bonuses, rentals and royalties.

NOTE: The State of Louisiana does hereby reserve, and this lease shall be subject to, the imprescriptible right of surface use in the nature of a servitude in favor of the Department of Natural Resources, including its Offices and Commissions, for the sole purpose of implementing, constructing, servicing and maintaining approved coastal zone management and/or restoration projects. Utilization of any and all rights derived under this lease by the mineral lessee, its agents, successors or assigns, shall not interfere with nor hinder the reasonable surface use by the Department of Natural Resources, its Offices or Commissions, as herein above reserved.

Applicant: Fleetwood Resources, Inc.

Bidder	Cash Payment	Price/Acre	Rental	Oil	Gas	Other



US

LA

BLOCK BS0053

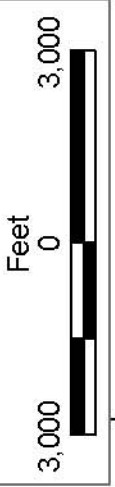
BLOCK MP0044

BLOCK MP0055

MAIN PASS AREA, REVISED

SL 17731

SL 17730



SL 17860

SL 17861

P.O.B.  
X=2,687,600.00  
Y=278,080.00

SL 17863

SL 17862

SL 17864

BLOCK MP0045

BLOCK MP0054

PLAQUEMINES PARISH

BLOCK BS0052

SL 17053

SL 17244

SL 17052

SL 2726

SL 2726

BLOCK MP0046

BLOCK MP0053

BRETON SOUND AREA

BLOCK BS0051

SL 16663

SL 16668

**TRACT 37301 - Portion of Block 7, South Timbalier Area, Revised, Terrebonne Parish, Louisiana**

The beds and bottoms of all water bodies belonging to the State of Louisiana located in Block 7, South Timbalier Area, Revised, together with any present lands formed by accretion to the shoreline or islands formed therein, located in Terrebonne Parish, Louisiana, owned by and not presently under mineral lease as of May 11, 2005, from the State of Louisiana, the geographical area of which is more fully described as follows: Beginning at a point on the West Line of Block 7, South Timbalier Area, Revised, having Coordinates of X = 2,186,425.06 and Y = 135,960.91; thence Northeasterly on a straight line to a point having Coordinates of X = 2,186,596 and Y = 135,997; thence Northeasterly on a straight to a point having Coordinates of X = 2,192,330 and Y = 136,944; thence Northeasterly on a straight line to a point having Coordinates of X = 2,198,296 and Y = 138,515; thence Northeasterly on a straight line to a point on the East Line of said Block 7 having Coordinates X = 2,202,046.02 and Y = 139,683.33; thence South 6,570.04 feet along the East Line of said Block 7 to a point having Coordinates of X = 2,202,046.02 and Y = 133,113.29; thence West 15,606.47 feet to a point on the West Line of said Block 7 having Coordinates of X = 2,186,439.55 and Y = 133,113.29; thence North 0 degrees 17 minutes 30 seconds West 2,847.66 feet along the West line of said Block 7 to the point of beginning containing approximately **1,600.25 acres**, all as more particularly outlined on a plat on file in the Office of Mineral Resources, Department of Natural Resources. All bearings, distances and coordinates are based on Louisiana Coordinate System of 1927, (North or South Zone).

NOTE: The above description of the Tract nominated for lease has been provided and corrected, where required, exclusively by the nomination party. Any mineral lease selected from this Tract and awarded by the Louisiana State Mineral Board shall be without warranty of any kind, either express, implied, or statutory, including, but not limited to, the implied warranties of merchantability and fitness for a particular purpose. Should the mineral lease awarded by the Louisiana State Mineral Board be subsequently modified, cancelled or abrogated due to the existence of conflicting leases, operating agreements, private claims or other future obligations or conditions which may affect all or any portion of the leased Tract, it shall not relieve the Lessee of the obligation to pay any bonus due thereon to the Louisiana State Mineral Board, nor shall the Louisiana State Mineral Board be obligated to refund any consideration paid by the Lessor prior to such modification, cancellation, or abrogation, including, but not limited to, bonuses, rentals and royalties.

NOTE: The State of Louisiana does hereby reserve, and this lease shall be subject to, the imprescriptible right of surface use in the nature of a servitude in favor of the Department of Natural Resources, including its Offices and Commissions, for the sole purpose of implementing, constructing, servicing and maintaining approved coastal zone management and/or restoration projects. Utilization of any and all rights derived

under this lease by the mineral lessee, its agents, successors or assigns, shall not interfere with nor hinder the reasonable surface use by the Department of Natural Resources, its Offices or Commissions, as herein above reserved.

NOTE: The Department of Wildlife and Fisheries has designated certain areas in the coastal waters of the State of Louisiana as Oyster Seed Bed Areas. The exact location of those Seed Bed Areas must be obtained from the Department of Wildlife and Fisheries and any work done under a mineral lease from the State of Louisiana may necessarily be conducted in conformity with the rules and regulations promulgated by the said Department of Wildlife and Fisheries for Oyster Seed Bed Areas.

Applicant: Anchor Land & Exploration Company, L.L.C.

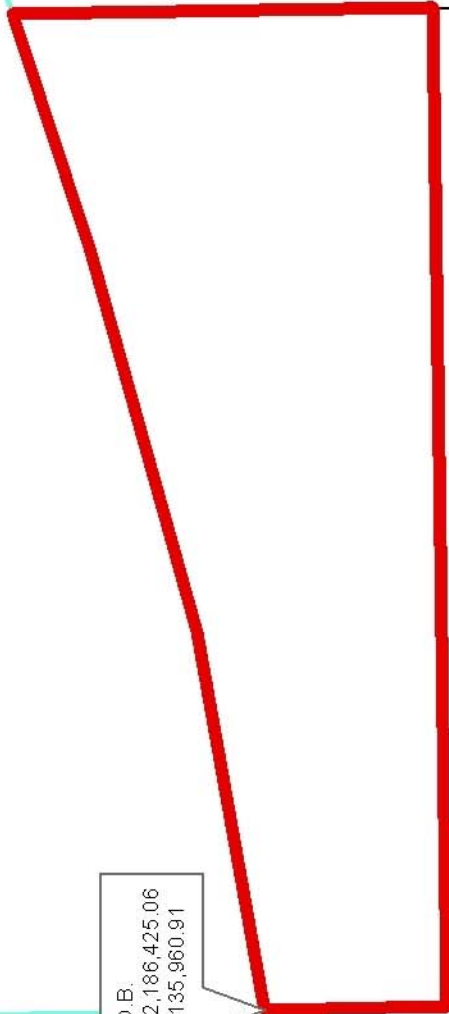
Bidder	Cash Payment	Price/Acre	Rental	Oil	Gas	Other





TERREBONNE PARISH

BLOCK ST0008



SOUTH TIMBALIER AREA, REVISED

BLOCK ST0007

SOUTH PELTO AREA

P.O.B.  
X=2,186,425.06  
Y=135,960.91

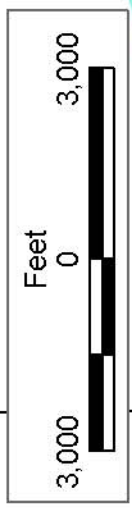
BLOCK SS0043

SL 18409

SL 17189

SL 16558

SHIP SHOAL AREA



**TRACT 37302 - Portion of Blocks 43, and 67, Ship Shoal Area, Terrebonne Parish, Louisiana**

The beds and bottoms of all water bodies belonging to the State of Louisiana located in Blocks 43, and 67, Ship Shoal Area, together with any present lands formed by accretion to the shoreline or islands formed therein, located in Terrebonne Parish, Louisiana, owned by and not presently under mineral lease as of May 11, 2005, from the State of Louisiana, the geographical area of which is more fully described as follows: Beginning at the Northwest Corner of Block 67, and the Southwest Corner of Block 43, Ship Shoal Area, having Coordinates of X = 2,171,600.00 and Y = 130,197.44; thence North 2,367.56 feet along the West line of said Block 43 to the Southwest corner of State Lease No. 17190 having Coordinates of X = 2,171,600.00 and Y = 132,565.00; thence South 88 degrees 14 minutes 38 seconds East 1,272.60 feet and North 3,029.87 feet along the South and East boundaries of said State Lease No. 17190 to its Northeast corner and the West corner of State Lease No. 17596, having Coordinates of X = 2,172,872.00 and Y = 135,555.87; thence South 32 degrees 57 minutes 16 seconds East 2,093.99 feet and North 46 degrees 01 minutes 37 seconds East 2,616.36 feet along the boundaries of said State Lease No. 17596 to its East corner having Coordinates of X = 2,175,893.98 and Y = 135,615.38; thence Northeasterly on a straight line to a point having Coordinates of X = 2,177,220.00 and Y = 135,641.49; thence South 8,369.72 feet to a point within Block 67 located on the North Boundary of State Lease No. 17308, having Coordinates of X = 2,177,220.00 and Y = 127,271.77, thence along the boundaries of said State Lease No. 17308 the following: West 620.00 feet, South 1,000.00 feet, East 2,000.00 feet and South 720.59 feet to its most Southern Southwest corner, said point also being the Northwest corner of State Lease No. 17309, having Coordinates of X = 2,178,600.00 and Y = 125,551.18; thence along the boundary of said State Lease No. 17309 the following: South 929.41 feet, South 28 degrees 47 minutes 12 seconds West 5,191.58 feet, South 51 degrees 20 minutes 25 seconds East 1,280.62 feet and North 47 degrees 7 minutes 16 seconds East 3,821.00 feet to a corner having Coordinates of X = 2,179,900.00 and Y = 121,871.77; thence South 4,642.55 feet to a point on the three mile line as set out in the June, 1975 decree of the Supreme Court having Coordinates of X = 2,179,900.00 and Y = 117,229.22; thence Northwesterly on a straight line to a point having Coordinates of X = 2,179,579 and Y = 117,248; thence Northwesterly on an arc having a radius of 18,240.60 feet and a center at X = 2,180,645.00 and Y = 135,457.00 to a point having Coordinates of X = 2,177,979 and Y = 117,412; thence Southwesterly on straight line to a point having Coordinates of X = 2,172,700 and Y = 117,308; thence Southwesterly on a straight line to a point having Coordinates of X = 2,171,638 and Y = 117,082; thence Southwesterly on an arc having a radius of 18,240.60 feet and a center at X = 2,167,836.00 and Y = 134,922.00 to a point on the West line of said Block 67, having Coordinates of X = 2,171,600.00 and Y = 117,073.98; thence North 13,123.46 feet along the West Line of said Block 67 to the point of beginning, containing approximately **2,450.34 acres, LESS AND EXCEPT** that portion thereof, if any, lying seaward of the line three nautical miles from the

coast line of Louisiana, as said three mile line has been decreed by the Supreme Court of the United States, as determined by a Special Master appointed therein, in litigation styled **United States v. State of Louisiana et al No. 9 Original**, in 1975, all as more particularly outlined on a plat in the Office of Mineral Resources, Department of Natural Resources. All bearings, distances and coordinates are based on the Louisiana Coordinate System of 1927, (South Zone).

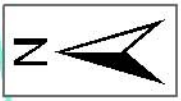
NOTE: The above description of the Tract nominated for lease has been provided and corrected, where required, exclusively by the nomination party. Any mineral lease selected from this Tract and awarded by the Louisiana State Mineral Board shall be without warranty of any kind, either express, implied, or statutory, including, but not limited to, the implied warranties of merchantability and fitness for a particular purpose. Should the mineral lease awarded by the Louisiana State Mineral Board be subsequently modified, cancelled or abrogated due to the existence of conflicting leases, operating agreements, private claims or other future obligations or conditions which may affect all or any portion of the leased Tract, it shall not relieve the Lessee of the obligation to pay any bonus due thereon to the Louisiana State Mineral Board, nor shall the Louisiana State Mineral Board be obligated to refund any consideration paid by the Lessor prior to such modification, cancellation, or abrogation, including, but not limited to, bonuses, rentals and royalties.

NOTE: The State of Louisiana does hereby reserve, and this lease shall be subject to, the imprescriptible right of surface use in the nature of a servitude in favor of the Department of Natural Resources, including its Offices and Commissions, for the sole purpose of implementing, constructing, servicing and maintaining approved coastal zone management and/or restoration projects. Utilization of any and all rights derived under this lease by the mineral lessee, its agents, successors or assigns, shall not interfere with nor hinder the reasonable surface use by the Department of Natural Resources, its Offices or Commissions, as herein above reserved.

NOTE: The Department of Wildlife and Fisheries has designated certain areas in the coastal waters of the State of Louisiana as Oyster Seed Bed Areas. The exact location of those Seed Bed Areas must be obtained from the Department of Wildlife and Fisheries and any work done under a mineral lease from the State of Louisiana may necessarily be conducted in conformity with the rules and regulations promulgated by the said Department of Wildlife and Fisheries for Oyster Seed Bed Areas.

Applicant: Anchor Land & Exploration Company, L.L.C.

Bidder	Cash Payment	Price/Acre	Rental	Oil	Gas	Other



SOUTH  
TIMBALIER  
AREA,  
REVISED

SOUTH  
PELTO  
AREA

BLOCK SS0043

SL 16558

TERREBONNE PARISH

SHIP SHOAL AREA

BLOCK SS0067

SL 17308

SL 17309

SL 17596

SL 17190

SL  
17187

P.O.B.  
X=2,171,600.00  
Y=130,197.44

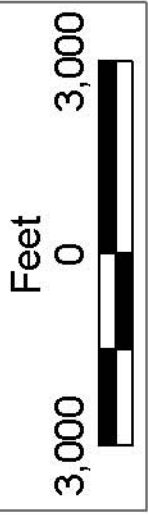
BLOCK SS0045

BLOCK SS0066

SL 14689

LA

US



**TRACT 37303 - Portion of Blocks 43, and 67, Ship Shoal Area, Terrebonne Parish, Louisiana**

The beds and bottoms of all water bodies belonging to the State of Louisiana located in Blocks 43, and 67, Ship Shoal Area, together with any present lands formed by accretion to the shoreline or islands formed therein, located in Terrebonne Parish, Louisiana, owned by and not presently under mineral lease as of May 11, 2005, from the State of Louisiana, the geographical area of which is more fully described as follows: Beginning at a point on the North line of Block 67, Ship Shoal Area, and the South Line of Block 43, Ship Shoal Area, also being the Southwest corner of State Lease No. 16558 having Coordinates of X = 2,180,150.00 and Y = 130,197.44; thence along the boundary of said State Lease No. 16558 the following: East 4,457.00 feet, North 2,914.45 feet, West 669.24 feet and North 652.11 feet to a point on the South boundary of State Lease No. 17189 having Coordinate of X = 2,183,937.76 and Y = 133,764.00; thence along the boundary of said State Lease No. 17189 the following: East 932.24 feet and North 20 degrees 19 minutes 23 seconds East 2,159.43 feet to a point on the North boundary of said Block 43 having Coordinates of X = 2,185,620.00 and Y = 135,789.00; thence Northeasterly on a straight line to the Northeast corner of said Block 43 having Coordinates of X = 2,186,425.06 and Y = 135,960.91; thence South 00 degrees 17 minutes 30 seconds East 9,763.54 feet along the East line of said Block 43 and the East line of Block 67 to the Northeast corner of State Lease No. 15071 having Coordinates of X = 2,186,474.74 and Y = 126,197.50; thence along the boundary of said State Lease No. 15071 the following: West 1,700.00 feet, South 00 degrees 17 minutes 30 seconds East 6,500.14 feet, and East 1,700.00 feet to its Southeast corner located on the East line of said Block 67 having Coordinates of X = 2,186,507.82 and Y = 119,697.44; thence South 00 degrees 17 minutes 30 seconds East 2,244.73 feet along the East line of said Block 67 to a point of intersection with the three mile line as set out in the June 1975 decree of the Supreme Court having Coordinates of X = 2,186,519.25 and Y = 117,452.74; thence Southwesterly on a arc having a radius of 18,240.60 feet and a center at X = 2,184,788.00 and Y = 135,611.00 to a point having Coordinates of X = 2,185,156 and Y = 117,374; thence Southwesterly on a arc having a radius of 18,240.60 feet and a center at X = 2,182,166.00 and Y = 135,368.00 to a point having Coordinates of X = 2,181,100.00 and Y = 117,159.00; thence Northwesterly on a straight line to a point having Coordinates of X = 2,179,900.00 and Y = 117,229.21; thence North 4,642.56 feet to the Southeast corner of State Lease No. 17309 having Coordinates of X = 2,179,900.00 and Y = 121,871.77; thence North 3 degrees 15 minutes 7 seconds East 3,685.34 feet along the East Line of said State Lease No. 17309 to its Northeast corner and the Southeast corner of State Lease No. 17308 having Coordinates of X = 2,180,109.06 and Y = 125,551.18; thence along the East and North Boundaries of said State Lease No. 17308 the following: North 3 degrees 15 minutes 6 seconds East 721.75 feet, North 1,000.00 feet and West 2,930.00 feet to a point having Coordinates of X = 2,177,220.00 and Y = 127,271.77; thence North 8,369.72 feet to a point having Coordinates of X = 2,177,220.00 and Y = 135,641.49; thence

Northeasterly on a straight line to a point having Coordinates of X = 2,179,937 and Y = 135,695; thence Southeasterly on a straight line to the Northwest corner of State Lease No. 17189, having Coordinates of X = 2,180,645 and Y = 135,457; thence South 41 degrees 37 minutes 38 seconds West 745.17 feet along the Western boundary of said State Lease No. 17189 to its Southwest corner and the Northwest corner of said State Lease No. 16558, having Coordinates of X = 2,180,150.00 and Y = 134,900.00; thence South 4,702.56 feet along the West boundary of said State Lease No. 16558 to the point of beginning, containing approximately **2,457.45 acres, LESS AND EXCEPT** that portion thereof, if any, lying seaward of the line three nautical miles from the coast line of Louisiana, as said three mile line has been decreed by the Supreme Court of the United States, as determined by a Special Master appointed therein, in litigation styled **United States v. State of Louisiana et al No. 9 Original**, in 1975, all as more particularly outlined on a plat in the Office of Mineral Resources, Department of Natural Resources. All bearings, distances and coordinates are based on the Louisiana Coordinate System of 1927, (South Zone).

NOTE: The above description of the Tract nominated for lease has been provided and corrected, where required, exclusively by the nomination party. Any mineral lease selected from this Tract and awarded by the Louisiana State Mineral Board shall be without warranty of any kind, either express, implied, or statutory, including, but not limited to, the implied warranties of merchantability and fitness for a particular purpose. Should the mineral lease awarded by the Louisiana State Mineral Board be subsequently modified, cancelled or abrogated due to the existence of conflicting leases, operating agreements, private claims or other future obligations or conditions which may affect all or any portion of the leased Tract, it shall not relieve the Lessee of the obligation to pay any bonus due thereon to the Louisiana State Mineral Board, nor shall the Louisiana State Mineral Board be obligated to refund any consideration paid by the Lessor prior to such modification, cancellation, or abrogation, including, but not limited to, bonuses, rentals and royalties.

NOTE: The State of Louisiana does hereby reserve, and this lease shall be subject to, the imprescriptible right of surface use in the nature of a servitude in favor of the Department of Natural Resources, including its Offices and Commissions, for the sole purpose of implementing, constructing, servicing and maintaining approved coastal zone management and/or restoration projects. Utilization of any and all rights derived under this lease by the mineral lessee, its agents, successors or assigns, shall not interfere with nor hinder the reasonable surface use by the Department of Natural Resources, its Offices or Commissions, as herein above reserved.

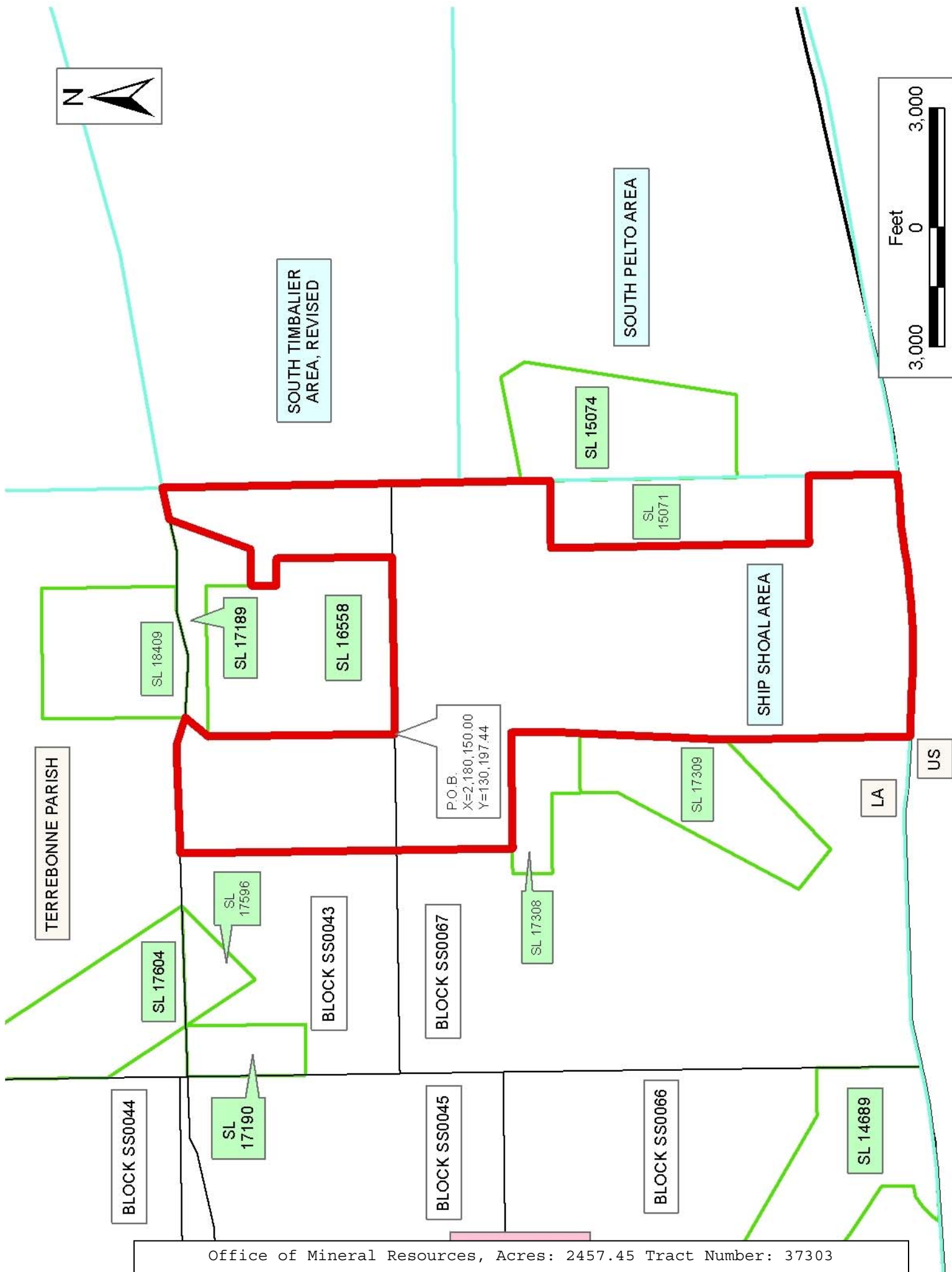
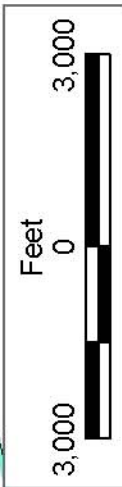
NOTE: The Department of Wildlife and Fisheries has designated certain areas in the coastal waters of the State of Louisiana as Oyster Seed Bed Areas. The exact location of those Seed Bed Areas must be obtained from the Department of Wildlife and Fisheries and any work done under a mineral

lease from the State of Louisiana may necessarily be conducted in conformity with the rules and regulations promulgated by the said Department of Wildlife and Fisheries for Oyster Seed Bed Areas.

Applicant: Anchor Land & Exploration Company, L.L.C.

Bidder	Cash Payment	Price/Acre	Rental	Oil	Gas	Other





P.O.B.  
X=2,180,150.00  
Y=130,197.44

BLOCK SS0044

SL 17190

BLOCK SS0045

BLOCK SS0066

SL 14689

SL 17604

SL 17596

BLOCK SS0043

BLOCK SS0067

SL 17308

SL 17309

SL 18409

SL 17189

SL 16558

SL 15071

SL 15074

TERREBONNE PARISH

SOUTH TIBBALIER AREA, REVISED

SOUTH PELTO AREA

SHIP SHOAL AREA

LA

US

**TRACT 37304 - Portion of Block 7, South Timbalier Area, Revised, Terrebonne Parish, Louisiana**

The beds and bottoms of all water bodies belonging to the State of Louisiana located in Block 7, South Timbalier Area, Revised, together with any present lands formed by accretion to the shoreline or islands formed therein, located in Terrebonne Parish, Louisiana, owned by and not presently under mineral lease as of May 11, 2005, from the State of Louisiana, the geographical area of which is more fully described as follows: Beginning at a point on the West Line of Block 7, South Timbalier Area, Revised, having Coordinates of X = 2,186,439.55 and Y = 133,113.29; thence East 15,606.47 feet to a point on the East Line of said Block 7 having Coordinates of X = 2,202,046.02 and Y = 133,113.29; thence South 4,628.53 feet to the Southeast Corner of said Block 7 having Coordinates of X = 2,202,046.02 and Y = 128,484.76; thence West 15,582.93 feet to its Southwest Corner of said Block 7 having Coordinates of X = 2,186,463.09 and Y = 128,484.76; thence North 0 degrees 17 minutes 30 seconds West 4,628.59 feet along the West line of said Block 7 to the point of beginning, containing approximately **1,657.04 acres**, all as more particularly outlined on a plat on file in the Office of Mineral Resources, Department of Natural Resources. All bearings, distances and coordinates are based on Louisiana Coordinate System of 1927, (North or South Zone).

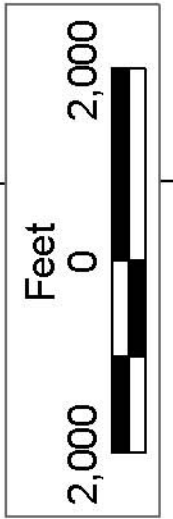
NOTE: The above description of the Tract nominated for lease has been provided and corrected, where required, exclusively by the nomination party. Any mineral lease selected from this Tract and awarded by the Louisiana State Mineral Board shall be without warranty of any kind, either express, implied, or statutory, including, but not limited to, the implied warranties of merchantability and fitness for a particular purpose. Should the mineral lease awarded by the Louisiana State Mineral Board be subsequently modified, cancelled or abrogated due to the existence of conflicting leases, operating agreements, private claims or other future obligations or conditions which may affect all or any portion of the leased Tract, it shall not relieve the Lessee of the obligation to pay any bonus due thereon to the Louisiana State Mineral Board, nor shall the Louisiana State Mineral Board be obligated to refund any consideration paid by the Lessor prior to such modification, cancellation, or abrogation, including, but not limited to, bonuses, rentals and royalties.

NOTE: The State of Louisiana does hereby reserve, and this lease shall be subject to, the imprescriptible right of surface use in the nature of a servitude in favor of the Department of Natural Resources, including its Offices and Commissions, for the sole purpose of implementing, constructing, servicing and maintaining approved coastal zone management and/or restoration projects. Utilization of any and all rights derived under this lease by the mineral lessee, its agents, successors or assigns, shall not interfere with nor hinder the reasonable surface use by the Department of Natural Resources, its Offices or Commissions, as herein above reserved.

NOTE: The Department of Wildlife and Fisheries has designated certain areas in the coastal waters of the State of Louisiana as Oyster Seed Bed Areas. The exact location of those Seed Bed Areas must be obtained from the Department of Wildlife and Fisheries and any work done under a mineral lease from the State of Louisiana may necessarily be conducted in conformity with the rules and regulations promulgated by the said Department of Wildlife and Fisheries for Oyster Seed Bed Areas.

Applicant: Anchor Land & Exploration Company, L.L.C.

Bidder	Cash Payment	Price/Acre	Rental	Oil	Gas	Other



TERREBONNE PARISH

SOUTH TIMBALIER  
AREA, REVISED

BLOCK ST0007

BLOCK PL0001

SOUTH PELTO AREA

P.O.B.  
X=2,186,439.55  
Y=133,113.29

SHIP  
SHOAL  
AREA

SL 15074

**TRACT 37305 - Portion of Block 1, South Pelto Area, South Timbalier Area, Terrebonne Parish, Louisiana**

The beds and bottoms of all water bodies belonging to the State of Louisiana located in Block 1, South Pelto Area, together with any present lands formed by accretion to the shoreline or islands formed therein, located in Terrebonne Parish, Louisiana, owned by and not presently under mineral lease as of May 11, 2005, from the State of Louisiana, the geographical area of which is more fully described as follows: Beginning at the Northwest Corner of Block 1, South Pelto Area, having Coordinates of X = 2,186,463.09 and Y = 128,484.76; thence East 15,582.93 feet along the North Line of said Block 1 to its Northeast corner having Coordinates of X = 2,202,046.02 and Y = 128,484.76; thence South 6,982.54 feet along the East line of said Block 1 to a point having Coordinates of X = 2,202,046.02 and Y = 121,502.22; thence South 89 degrees 56 minutes 28 seconds West 13,478.43 feet to the Southeast Corner of State Lease No. 15074 having Coordinates of X = 2,188,567.60 and Y = 121,488.34; thence along the boundary of said State Lease No. 15074 the following courses and distances: North 9 degrees 33 minutes 27 seconds East 5,392.86 feet, North 31 degrees 55 minutes 20 seconds West 708.03 feet, and South 79 degrees 30 minutes 57 seconds West 2,662.00 feet to its Northwest corner located on the West Line of said Block 1 having Coordinates of X = 2,186,471.06 and Y = 126,922.91; thence North 0 degrees 17 minutes 30 seconds West 1,561.87 feet along the West Line of said Block 1 to the point of beginning, containing approximately **2,164.82 acres**, all as more particularly outlined on a plat on file in the Office of Mineral Resources, Department of Natural Resources. All bearings, distances and coordinates are based on Louisiana Coordinate System of 1927, (North or South Zone).

NOTE: The above description of the Tract nominated for lease has been provided and corrected, where required, exclusively by the nomination party. Any mineral lease selected from this Tract and awarded by the Louisiana State Mineral Board shall be without warranty of any kind, either express, implied, or statutory, including, but not limited to, the implied warranties of merchantability and fitness for a particular purpose. Should the mineral lease awarded by the Louisiana State Mineral Board be subsequently modified, cancelled or abrogated due to the existence of conflicting leases, operating agreements, private claims or other future obligations or conditions which may affect all or any portion of the leased Tract, it shall not relieve the Lessee of the obligation to pay any bonus due thereon to the Louisiana State Mineral Board, nor shall the Louisiana State Mineral Board be obligated to refund any consideration paid by the Lessor prior to such modification, cancellation, or abrogation, including, but not limited to, bonuses, rentals and royalties.

NOTE: The State of Louisiana does hereby reserve, and this lease shall be subject to, the imprescriptible right of surface use in the nature of a servitude in favor of the Department of Natural Resources, including its Offices and Commissions, for the sole purpose of implementing, constructing, servicing and maintaining approved coastal zone management

and/or restoration projects. Utilization of any and all rights derived under this lease by the mineral lessee, its agents, successors or assigns, shall not interfere with nor hinder the reasonable surface use by the Department of Natural Resources, its Offices or Commissions, as herein above reserved.

Applicant: Anchor Land & Exploration Company, L.L.C.

Bidder	Cash Payment	Price/Acre	Rental	Oil	Gas	Other



TERREBONNE PARISH

SOUTH TIMBALIER AREA, REVISED

SOUTH PELTO AREA

BLOCK PL0001

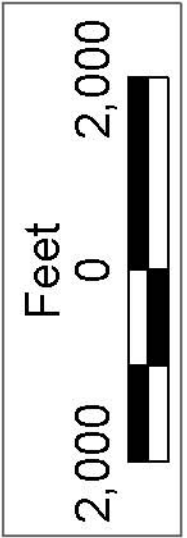
US

LA

P.O.B.  
X=2,186,463.09  
Y=128,484.76

SL 15074

SL 15071



**TRACT 37306 - Portion of Block 1, South Pelto Area, Terrebonne Parish, Louisiana**

The beds and bottoms of all water bodies belonging to the State of Louisiana located in Block 1, South Pelto Area, together with any present lands formed by accretion to the shoreline or islands formed therein, located in Terrebonne Parish, Louisiana, owned by and not presently under mineral lease as of May 11, 2005, from the State of Louisiana, the geographical area of which is more fully described as follows: Beginning at a point on the West Line of Block 1, South Pelto Area, being the Southwest corner of State Lease No. 15074 having Coordinates of X = 2,186,498.73 and Y = 121,488.34; thence East 2,068.87 feet along the South line of said State Lease No. 15074 to its Southeast corner having Coordinates of X = 2,188,567.60 and Y = 121,488.34; thence North 89 degrees 56 minutes 28 seconds East 13,478.43 feet to a point on the East Line of said Block 1 having Coordinates of X = 2,202,046.02 and Y = 121,502.22; thence South 861.89 feet along the East line of said Block 1 to a point on the three mile line as set out in the June 1975 decree of the Supreme Court having Coordinates of X = 2,202,046.02 and Y = 120,640.33; thence Southwesterly on a straight line to a point having Coordinates of X = 2,196,975 and Y = 119,305; thence Southwesterly on an arc having a radius of 18,240.60 feet and a center at X = 2,192,330 and Y = 136,944 to a point having Coordinates of X = 2,195,302 and Y = 118,947; thence Southwesterly on a straight line to a point having Coordinates of X = 2,189,988 and Y = 118,070; thence Southwesterly on a straight line to a point having Coordinates of X = 2,188,596 and Y = 117,772; thence Southwesterly on a arc having a radius of 18,240.60 feet and a center at X = 2,184,788 and Y = 135,611 to a point on the West Line of said Block 1 having Coordinates of X = 2,186,519.25 and Y = 117,452.74; thence North 0 degrees 17 minutes 30 seconds West 4,035.65 feet on the West line of said Block 1 to the point of beginning, containing approximately **934.08 acres, LESS AND EXCEPT** that portion thereof, if any, lying seaward of the line three nautical miles from the coast line of Louisiana, as said three mile line has been decreed by the Supreme Court of the United States, as determined by a Special Master appointed therein, in litigation styled **United States v. State of Louisiana et al No. 9 Original**, in 1975, all as more particularly outlined on a plat in the Office of Mineral Resources, Department of Natural Resources. All bearings, distances and coordinates are based on the Louisiana Coordinate System of 1927, (South Zone).

NOTE: The above description of the Tract nominated for lease has been provided and corrected, where required, exclusively by the nomination party. Any mineral lease selected from this Tract and awarded by the Louisiana State Mineral Board shall be without warranty of any kind, either express, implied, or statutory, including, but not limited to, the implied warranties of merchantability and fitness for a particular purpose. Should the mineral lease awarded by the Louisiana State Mineral Board be subsequently modified, cancelled or abrogated due to the existence of conflicting leases, operating agreements, private claims or other future obligations or conditions which may affect all or any portion



of the leased Tract, it shall not relieve the Lessee of the obligation to pay any bonus due thereon to the Louisiana State Mineral Board, nor shall the Louisiana State Mineral Board be obligated to refund any consideration paid by the Lessor prior to such modification, cancellation, or abrogation, including, but not limited to, bonuses, rentals and royalties.

NOTE: The State of Louisiana does hereby reserve, and this lease shall be subject to, the imprescriptible right of surface use in the nature of a servitude in favor of the Department of Natural Resources, including its Offices and Commissions, for the sole purpose of implementing, constructing, servicing and maintaining approved coastal zone management and/or restoration projects. Utilization of any and all rights derived under this lease by the mineral lessee, its agents, successors or assigns, shall not interfere with nor hinder the reasonable surface use by the Department of Natural Resources, its Offices or Commissions, as herein above reserved.

Applicant: Anchor Land & Exploration Company, L.L.C.

Bidder	Cash Payment	Price/Acre	Rental	Oil	Gas	Other



TERREBONNE PARISH

SOUTH TIMBALIER AREA, REVISED

BLOCK PL0002

SOUTH PELTO AREA

BLOCK PL0001

SL 15074

SL 15071

P.O.B.  
X=2,186,498.73  
Y=121,488.34

BLOCK SS0043

SHIP SHOAL AREA

BLOCK SS0067

LA

US

