

**TRACT 36298 - Plaquemines Parish, Louisiana**

All of the lands now or formerly constituting the beds and bottoms of all water bodies of every nature and description the title of which vests in the State of Louisiana, together with all islands arising therein and other lands formed by accretion or by reliction, where allowed by law, excepting tax adjudicated lands, and not presently under mineral lease on May 12, 2004, situated in Plaquemines Parish, Louisiana, and more particularly described as follows: Beginning at a point having Coordinates of X = 2,483,700.00 and Y = 286,914.00; thence West 8,200.00 feet to the South corner of State Lease No. 12036, as amended, having Coordinates of X = 2,475,500.00 and Y = 286,914.00; thence North 5,932.93 feet along the East line of said State Lease No. 12036 to its Northeast corner, said corner also being the Southeast corner of State Lease No. 12499, as amended, having Coordinates of X = 2,475,500.00 and Y = 292,846.93; thence along the boundary of said State Lease No. 12499 the following courses: North 1,748.66 feet to a point having Coordinates of X = 2,475,500.00 and Y = 294,595.59; West 3,750.00 feet to a point having Coordinates of X = 2,471,750.00 and Y = 294,595.59 and South 1,748.66 feet to its Southwest corner, said corner also being the Northwest corner of said State Lease No. 12036 having Coordinates of X = 2,471,750.00 and Y = 292,846.93; thence along the boundary of said State Lease No. 12036 the following courses: South 51 degrees 10 minutes 49 seconds West 2,867.50 feet to a point having Coordinates of X = 2,469,515.87 and Y = 291,049.37 and South 55 degrees 21 minutes 12 seconds East 7,274.00 feet to its South corner having Coordinates of X = 2,475,500.00 and Y = 286,914.00; thence North 83 degrees 44 minutes 26 seconds West 3,553.27 feet to the Southeast corner of State Lease No. 9572, as amended, having Coordinates of X = 2,471,967.91 and Y = 287,301.41; thence along the Eastern boundary of said State Lease No. 9572 the following courses: North 24 degrees 05 minutes 22 seconds West 174.15 feet to a point having Coordinates of X = 2,471,896.83 and Y = 287,460.40; North 39 degrees 59 minutes 31 seconds West 218.13 feet to a point having Coordinates of X = 2,471,756.64 and Y = 287,627.52; North 51 degrees 18 minutes 29 seconds West 277.70 feet to a point having Coordinates of X = 2,471,539.89 and Y = 287,801.12 and North 65 degrees 22 minutes 27 seconds West 109.96 feet to its Northeast corner, said corner also being the Southeast corner of State Lease No. 9570, as amended, having Coordinates of X = 2,471,439.93 and Y = 287,846.94; thence along the boundary of said State Lease No. 9570 the following courses: North 65 degrees 22 minutes 32 seconds West 188.98 feet to a point having Coordinates of X = 2,471,268.14 and Y = 287,925.68; North 74 degrees 56 minutes 09 seconds West 300.96 feet to a point having Coordinates of X = 2,470,977.52 and Y = 288,003.90; North 47 degrees 20 minutes 58 seconds West 1,112.51 feet to a point having Coordinates of X = 2,470,159.27 and Y = 288,757.65; North 46 degrees 12 minutes 01 seconds West 596.44 feet to a point having Coordinates of X = 2,469,728.78 and Y = 289,170.47; North 52 degrees 18 minutes 47 seconds West 698.15 feet to a point having Coordinates of X = 2,469,176.29 and Y = 289,597.29; North 53 degrees 46 minutes 24 seconds West 698.18 feet to a point having Coordinates of X = 2,468,613.08 and Y = 290,009.90; North 57 degrees 09 minutes 40 seconds

West 490.87 feet to a point having Coordinates of X = 2,468,200.65 and Y = 290,276.08; North 58 degrees 53 minutes 27 seconds West 234.37 feet to a point having Coordinates of X = 2,468,000.00 and Y = 290,397.17 and South 900.24 feet to the Northeast corner of State Lease No. 9571, as amended, having Coordinates of X = 2,468,000.00 and Y = 289,496.93; thence West 1,864.91 feet along the North line of said State Lease No. 9571 to a point on the boundary of State Lease No. 8512, as amended, having Coordinates of X = 2,466,135.09 and Y = 289,496.93; thence along the boundary of said State Lease No. 8512 the following courses: North 26 degrees 08 minutes 33 seconds East 1,756.29 feet to a point having Coordinates of X = 2,466,908.92 and Y = 291,073.56; North 57 degrees 24 minutes 38 seconds West 1,240.13 feet to a point having Coordinates of X = 2,465,864.05 and Y = 291,741.51 and North 58 degrees 47 minutes 12 seconds West 191.82 feet to a point on its North boundary having Coordinates of X = 2,465,700.00 and Y = 291,840.91; thence North 6,159.09 feet to a point having Coordinates of X = 2,465,700.00 and Y = 298,000.00; thence East 18,000.00 feet to a point having Coordinates of X = 2,483,700.00 and Y = 298,000.00; thence South 11,086.00 feet to the point of beginning, containing approximately **2,287 acres**, all as more particularly outlined on a plat on file in the Office of Mineral Resources, Department of Natural Resources. All bearings, distances and coordinates are based on Louisiana Coordinate System of 1927, (North or South Zone), where applicable.

NOTE: The above description of the Tract nominated for lease has been provided and corrected, where required, exclusively by the nomination party. Any mineral lease selected from this Tract and awarded by the Louisiana State Mineral Board shall be without warranty of any kind, either express, implied, or statutory, including, but not limited to, the implied warranties of merchantability and fitness for a particular purpose. Should the mineral lease awarded by the Louisiana State Mineral Board be subsequently modified, cancelled or abrogated due to the existence of conflicting leases, operating agreements, private claims or other future obligations or conditions which may affect all or any portion of the leased Tract, it shall not relieve the Lessee of the obligation to pay any bonus due thereon to the Louisiana State Mineral Board, nor shall the Louisiana State Mineral Board be obligated to refund any consideration paid by the Lessor prior to such modification, cancellation, or abrogation, including, but not limited to, bonuses, rentals and royalties.

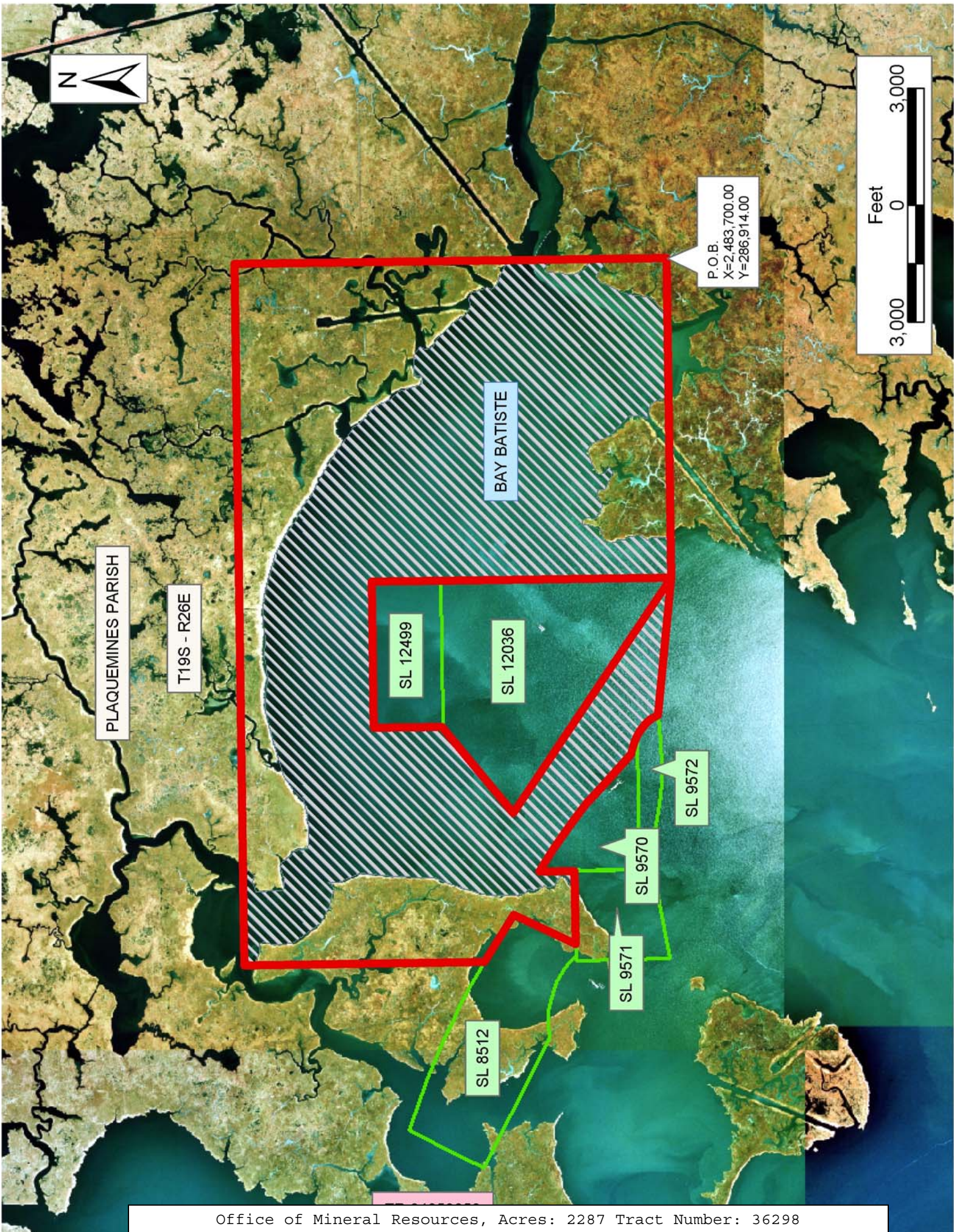
NOTE: The State of Louisiana does hereby reserve, and this lease shall be subject to, the imprescriptible right of surface use in the nature of a servitude in favor of the Department of Natural Resources, including its Offices and Commissions, for the sole purpose of implementing, constructing, servicing and maintaining approved coastal zone management and/or restoration projects. Utilization of any and all rights derived under this lease by the mineral lessee, its agents, successors or assigns, shall not interfere with nor hinder the reasonable surface use by the Department of Natural Resources, its Offices or Commissions, as herein above reserved.

NOTE: The Department of Wildlife and Fisheries has designated certain areas in the coastal waters of the State of Louisiana as Oyster Seed Bed Areas. The exact location of those Seed Bed Areas must be obtained from the Department of Wildlife and Fisheries and any work done under a mineral lease from the State of Louisiana may necessarily be conducted in conformity with the rules and regulations promulgated by the said Department of Wildlife and Fisheries for Oyster Seed Bed Areas.

Applicant: Reaf Energy Partners

Bidder	Cash Payment	Price/Acre	Rental	Oil	Gas	Other





PLAQUEMINES PARISH

T19S - R26E

BAY BATISTE

SL 12499

SL 12036

SL 9571

SL 9570

SL 9572

SL 8512

P.O.B.  
X=2,483,700.00  
Y=286,914.00





**TRACT 36299 - Plaquemines Parish, Louisiana**

All of the lands now or formerly constituting the beds and bottoms of all water bodies of every nature and description the title of which vests in the State of Louisiana, together with all islands arising therein and other lands formed by accretion or by reliction, where allowed by law, excepting tax adjudicated lands, and not presently under mineral lease on May 12, 2004, situated in Plaquemines Parish, Louisiana, and more particularly described as follows: Beginning at a point having Coordinates of X = 2,485,520.00 and Y = 286,914.00; thence Southerly approximately 3,861 feet to the Northwest corner of State Lease No. 2104; thence Southerly approximately 3,937 feet along the West line of said State Lease No. 2104 to the Northeast corner of State Lease No. 2028, as amended; thence Westerly approximately 6,547 feet along the North line of said State Lease No. 2028 to the Southeast corner of State Lease No. 17856 having Coordinates of X = 2,479,023.89 and Y = 279,030.60; thence North 43 degrees 00 minutes 00 seconds West 3,920.67 feet along the East line of said State Lease No. 17856 to its Northeast corner, said corner also being a point on the Southern boundary of State Lease No. 17378, having Coordinates of X = 2,476,350.00 and Y = 281,898.00; thence along the boundary of said State Lease No. 17378 the following courses: South 79 degrees 16 minutes 00 seconds East 2,104.82 feet to a point having Coordinates of X = 2,478,418.00 and Y = 281,506.00; North 23 degrees 16 minutes 44 seconds West 2,246.92 feet to a point having Coordinates of X = 2,477,530.00 and Y = 283,570.00; North 67 degrees 57 minutes 57 seconds West 6,951.75 feet to a point having Coordinates of X = 2,471,086.00 and Y = 286,178.00 and North 89 degrees 19 minutes 11 seconds West 2,686.19 feet to its Northwest corner, said corner also being the Northeast corner of State Lease No. 17376, having Coordinates of X = 2,468,400.00 and Y = 286,209.89; thence along the Northern boundary of said State Lease No. 17376 the following courses: North 89 degrees 19 minutes 11 seconds West 1,694.12 feet to a point having Coordinates of X = 2,466,706.00 and Y = 286,230.00 and South 81 degrees 03 minutes 26 seconds West 1,097.17 feet to a point on the boundary of State Lease No. 15248, as amended, having Coordinates of X = 2,465,622.17 and Y = 286,059.45; thence along the boundary of said State Lease No. 15248 the following courses: North 69 degrees 43 minutes 40 seconds East 96.42 feet to a point having Coordinates of X = 2,465,712.61 and Y = 286,092.88; North 65 degrees 18 minutes 59 seconds East 524.32 feet to a point having Coordinates of X = 2,466,189.02 and Y = 286,311.84; North 55 degrees 57 minutes 13 seconds East 572.02 feet to a point having Coordinates of X = 2,466,662.99 and Y = 286,632.09; North 53 degrees 04 minutes 09 seconds East 300.00 feet to a point having Coordinates of X = 2,466,902.80 and Y = 286,812.35; North 51 degrees 03 minutes 00 seconds East 300.00 feet to a point having Coordinates of X = 2,467,136.11 and Y = 287,000.94; North 52 degrees 12 minutes 54 seconds East 300.00 feet to a point having Coordinates of X = 2,467,373.20 and Y = 287,184.75; North 60 degrees 09 minutes 15 seconds East 300.00 feet to a point having Coordinates of X = 2,467,633.41 and Y = 287,334.05; North 68 degrees 06 minutes 25 seconds East 300.00 feet to a point having Coordinates of X = 2,467,911.78 and Y = 287,445.91 and North

76 degrees 03 minutes 34 seconds East 300.00 feet to its Northeast corner, said corner also being a point on the Southern boundary of State Lease No. 9572, as amended, having Coordinates of X = 2,468,202.94 and Y = 287,518.19; thence along the Southern boundary of said State Lease No.9572 the following courses: North 89 degrees 45 minutes 07 seconds East 293.25 feet to a point having Coordinates of X = 2,468,496.19 and Y = 287,519.46; South 84 degrees 22 minutes 02 seconds East 369.22 feet to a point having Coordinates of X = 2,468,863.63 and Y = 287,483.22; South 77 degrees 11 minutes 13 seconds East 288.23 feet to a point having Coordinates of X = 2,469,144.68 and Y = 287,419.29; South 78 degrees 19 minutes 57 seconds East 525.58 feet to a point having Coordinates of X = 2,469,659.40 and Y = 287,313.01; South 83 degrees 18 minutes 03 seconds East 517.33 feet to a point having Coordinates of X = 2,470,173.20 and Y = 287,252.66; South 88 degrees 20 minutes 31 seconds East 483.12 feet to a point having Coordinates of X = 2,470,656.12 and Y = 287,238.68; North 88 degrees 43 minutes 47 seconds East 595.95 feet to a point having Coordinates of X = 2,471,251.92 and Y = 287,251.89 and North 86 degrees 02 minutes 26 seconds East 717.71 feet to its Southeast corner having Coordinates of X = 2,471,967.92 and Y = 287,301.45; thence South 83 degrees 44 minutes 26 seconds East 3,553.27 feet to the Southeast corner of State Lease No. 12036, as amended, having Coordinates of X = 2,475,500.00 and Y = 286,914.00; thence East 10,020.00 feet to the point of beginning, **LESS AND EXCEPT** any portion of State Lease No. 2028, as amended, and State Lease No. 2104, that may fall within the above described tract, containing approximately **634 acres**, all as more particularly outlined on a plat on file in the Office of Mineral Resources, Department of Natural Resources. All bearings, distances and coordinates are based on Louisiana Coordinate System of 1927, (North or South Zone), where applicable.

NOTE: The above description of the Tract nominated for lease has been provided and corrected, where required, exclusively by the nomination party. Any mineral lease selected from this Tract and awarded by the Louisiana State Mineral Board shall be without warranty of any kind, either express, implied, or statutory, including, but not limited to, the implied warranties of merchantability and fitness for a particular purpose. Should the mineral lease awarded by the Louisiana State Mineral Board be subsequently modified, cancelled or abrogated due to the existence of conflicting leases, operating agreements, private claims or other future obligations or conditions which may affect all or any portion of the leased Tract, it shall not relieve the Lessee of the obligation to pay any bonus due thereon to the Louisiana State Mineral Board, nor shall the Louisiana State Mineral Board be obligated to refund any consideration paid by the Lessor prior to such modification, cancellation, or abrogation, including, but not limited to, bonuses, rentals and royalties.

NOTE: The State of Louisiana does hereby reserve, and this lease shall be subject to, the imprescriptible right of surface use in the nature of a servitude in favor of the Department of Natural Resources, including its Offices and Commissions, for the sole purpose of implementing,

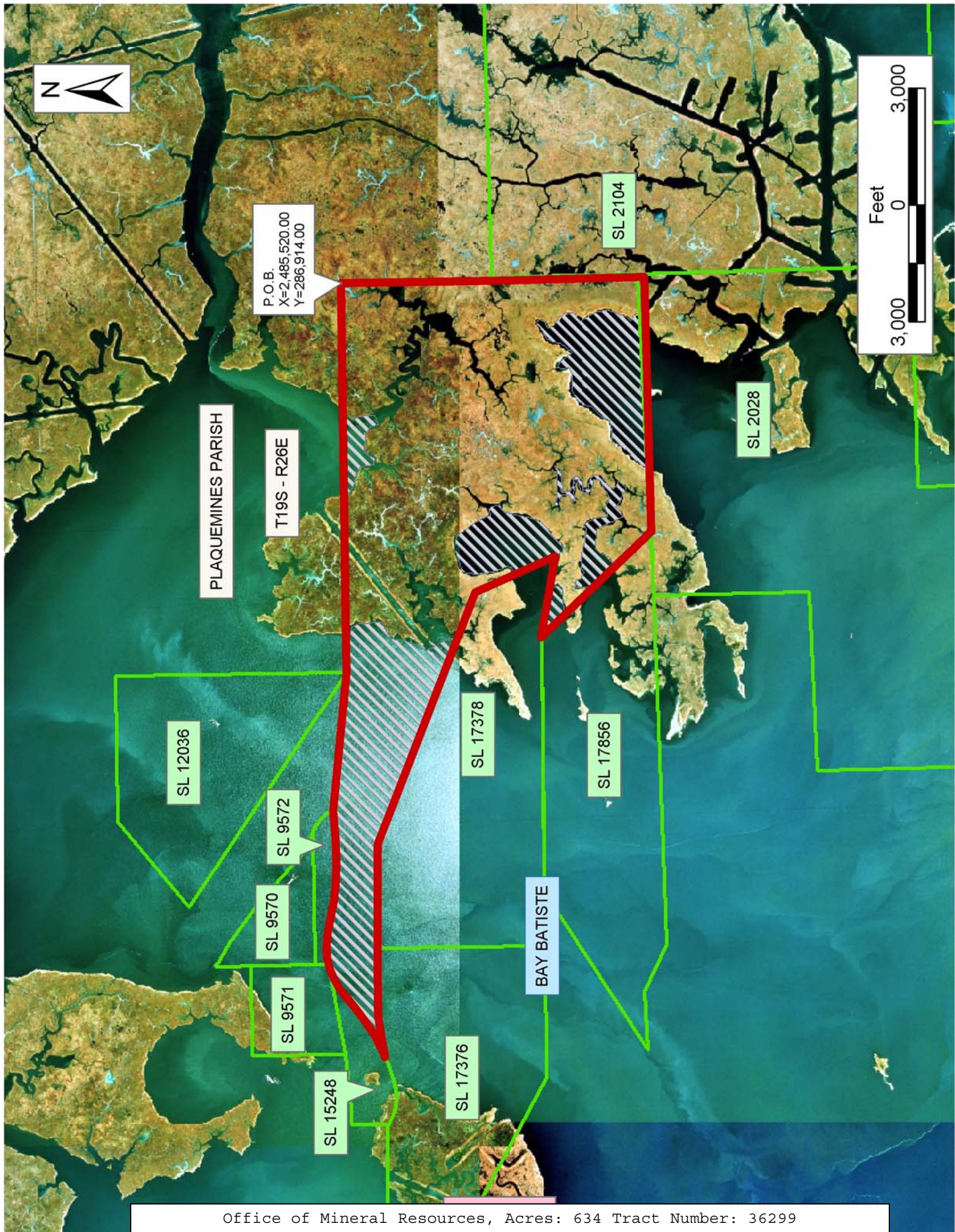
constructing, servicing and maintaining approved coastal zone management and/or restoration projects. Utilization of any and all rights derived under this lease by the mineral lessee, its agents, successors or assigns, shall not interfere with nor hinder the reasonable surface use by the Department of Natural Resources, its Offices or Commissions, as herein above reserved.

NOTE: The Department of Wildlife and Fisheries has designated certain areas in the coastal waters of the State of Louisiana as Oyster Seed Bed Areas. The exact location of those Seed Bed Areas must be obtained from the Department of Wildlife and Fisheries and any work done under a mineral lease from the State of Louisiana may necessarily be conducted in conformity with the rules and regulations promulgated by the said Department of Wildlife and Fisheries for Oyster Seed Bed Areas.

Applicant: Reaf Energy Partners

Bidder	Cash Payment	Price/Acre	Rental	Oil	Gas	Other







**TRACT 36300 - Plaquemines Parish, Louisiana**

All of the lands now or formerly constituting the beds and bottoms of all water bodies of every nature and description the title of which vests in the State of Louisiana, together with all islands arising therein and other lands formed by accretion or by reliction, where allowed by law, excepting tax adjudicated lands, and not presently under mineral lease on May 12, 2004, situated in Plaquemines Parish, Louisiana, and more particularly described as follows: Beginning at the Northwest corner of State Lease No. 17856, said corner also being a point on the South line of State Lease No. 17378, having Coordinates of X = 2,469,790.00 and Y = 281,925.82; thence South 57 degrees 26 minutes 02 seconds West 4,853.04 feet along the West line of said State Lease No. 17856 to a point on the North line of State Lease No. 17377 having Coordinates of X = 2,465,700.00 and Y = 279,313.55; thence South 87 degrees 13 minutes 25 seconds West 1,559.83 feet along the North line of said State Lease No. 17377 to a point having Coordinates of X = 2,464,142.00 and Y = 279,238.00; thence North 05 degrees 05 minutes 39 seconds East 1,554.14 feet to a point having Coordinates of X = 2,464,280.00 and Y = 280,786.00; thence North 1,571.75 feet to a point on the Southern boundary of State Lease No. 17376 having Coordinates of X = 2,464,280.00 and Y = 282,357.75; thence along the Southern boundary of said State Lease No. 17376 the following courses: South 61 degrees 13 minutes 59 seconds East 855.59 feet to a point having Coordinates of X = 2,465,030.00 and Y = 281,946.00 and South 89 degrees 45 minutes 25 seconds East 3,370.03 feet to its Southeast corner, said corner also being the Southwest corner of said State Lease No. 17378, having Coordinates of X = 2,468,400.00 and Y = 281,931.71; thence South 89 degrees 45 minutes 25 seconds East 1,390.01 feet along the South line of said State Lease No. 17378 to the point of beginning, containing approximately **216.35 acres**, all as more particularly outlined on a plat on file in the Office of Mineral Resources, Department of Natural Resources. All bearings, distances and coordinates are based on Louisiana Coordinate System of 1927, (North or South Zone), where applicable.

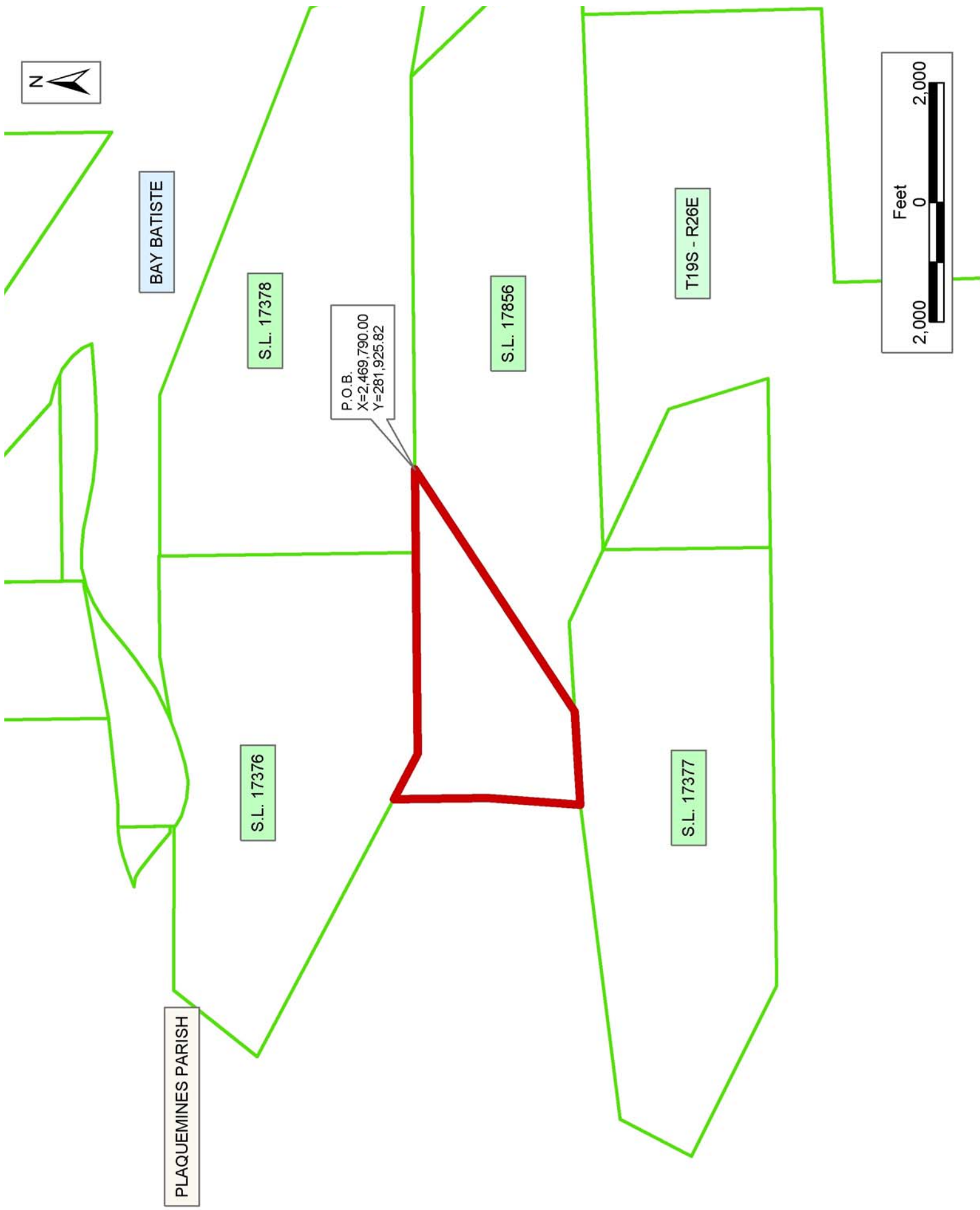
NOTE: The above description of the Tract nominated for lease has been provided and corrected, where required, exclusively by the nomination party. Any mineral lease selected from this Tract and awarded by the Louisiana State Mineral Board shall be without warranty of any kind, either express, implied, or statutory, including, but not limited to, the implied warranties of merchantability and fitness for a particular purpose. Should the mineral lease awarded by the Louisiana State Mineral Board be subsequently modified, cancelled or abrogated due to the existence of conflicting leases, operating agreements, private claims or other future obligations or conditions which may affect all or any portion of the leased Tract, it shall not relieve the Lessee of the obligation to pay any bonus due thereon to the Louisiana State Mineral Board, nor shall the Louisiana State Mineral Board be obligated to refund any consideration paid by the Lessor prior to such modification, cancellation, or abrogation, including, but not limited to, bonuses, rentals and royalties.

NOTE: The State of Louisiana does hereby reserve, and this lease shall be subject to, the imprescriptible right of surface use in the nature of a servitude in favor of the Department of Natural Resources, including its Offices and Commissions, for the sole purpose of implementing, constructing, servicing and maintaining approved coastal zone management and/or restoration projects. Utilization of any and all rights derived under this lease by the mineral lessee, its agents, successors or assigns, shall not interfere with nor hinder the reasonable surface use by the Department of Natural Resources, its Offices or Commissions, as herein above reserved.

NOTE: The Department of Wildlife and Fisheries has designated certain areas in the coastal waters of the State of Louisiana as Oyster Seed Bed Areas. The exact location of those Seed Bed Areas must be obtained from the Department of Wildlife and Fisheries and any work done under a mineral lease from the State of Louisiana may necessarily be conducted in conformity with the rules and regulations promulgated by the said Department of Wildlife and Fisheries for Oyster Seed Bed Areas.

Applicant: Reaf Energy Partners

Bidder	Cash Payment	Price/Acre	Rental	Oil	Gas	Other



BAY BATISTE

PLAQUEMINES PARISH

S.L. 17376

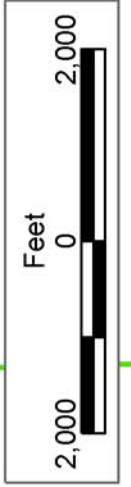
S.L. 17378

P.O.B.  
X=2,469,790.00  
Y=281,925.82

S.L. 17856

S.L. 17377

T19S - R26E





**TRACT 36301 - Plaquemines Parish, Louisiana**

All of the lands now or formerly constituting the beds and bottoms of all water bodies of every nature and description the title of which vests in the State of Louisiana, together with all islands arising therein and other lands formed by accretion or by reliction, where allowed by law, excepting tax adjudicated lands, and not presently under mineral lease on May 12, 2004, situated in Plaquemines Parish, Louisiana, and more particularly described as follows: Beginning at a point having Coordinates of X = 2,464,446.00 and Y = 268,202.33; thence North 7,797.67 feet to a point on the South line of State Lease No. 17377 having Coordinates of X = 2,464,446.00 and Y = 276,000.00; thence East 3,954.00 feet along the South line of said State Lease No. 17377 to its Southeast corner, said corner also being the Southwest corner of State Lease No. 17417, having Coordinates of X = 2,468,400.00 and Y = 276,000.00; thence along the boundary of said State Lease No. 17417 the following courses: East 2,827.06 feet to a point having Coordinates of X = 2,471,227.06 and Y = 276,000.00; North 16 degrees 21 minutes 35 seconds West 1,736.30 feet to a point having Coordinates of X = 2,470,738.00 and Y = 277,666.00 and North 64 degrees 06 minutes 41 seconds West 2,598.81 feet to its Northwest corner, said corner also being a point on the Southern boundary of State Lease No. 17856, having Coordinates of X = 2,468,400.00 and Y = 278,800.70; thence North 88 degrees 39 minutes 39 seconds East approximately 8,831 feet along the Southern boundary of said State Lease No. 17856 to the most Northerly Northwest corner of State Lease No. 2028, as amended; thence along the boundary of said State Lease No. 2028 the following courses: Southerly approximately 3,971 feet to a point; Westerly approximately 4,466 feet to a point and Southerly approximately 6,779 feet to its most Westerly Southwest corner; thence West approximately 8,458 feet to the point of beginning, **LESS AND EXCEPT** any portion of State Lease No. 2028, as amended, that may fall within the above described tract, containing approximately **1,961 acres**, all as more particularly outlined on a plat on file in the Office of Mineral Resources, Department of Natural Resources. All bearings, distances and coordinates are based on Louisiana Coordinate System of 1927, (North or South Zone), where applicable.

NOTE: The above description of the Tract nominated for lease has been provided and corrected, where required, exclusively by the nomination party. Any mineral lease selected from this Tract and awarded by the Louisiana State Mineral Board shall be without warranty of any kind, either express, implied, or statutory, including, but not limited to, the implied warranties of merchantability and fitness for a particular purpose. Should the mineral lease awarded by the Louisiana State Mineral Board be subsequently modified, cancelled or abrogated due to the existence of conflicting leases, operating agreements, private claims or other future obligations or conditions which may affect all or any portion of the leased Tract, it shall not relieve the Lessee of the obligation to pay any bonus due thereon to the Louisiana State Mineral Board, nor shall the Louisiana State Mineral Board be obligated to refund any consideration

paid by the Lessor prior to such modification, cancellation, or abrogation, including, but not limited to, bonuses, rentals and royalties.

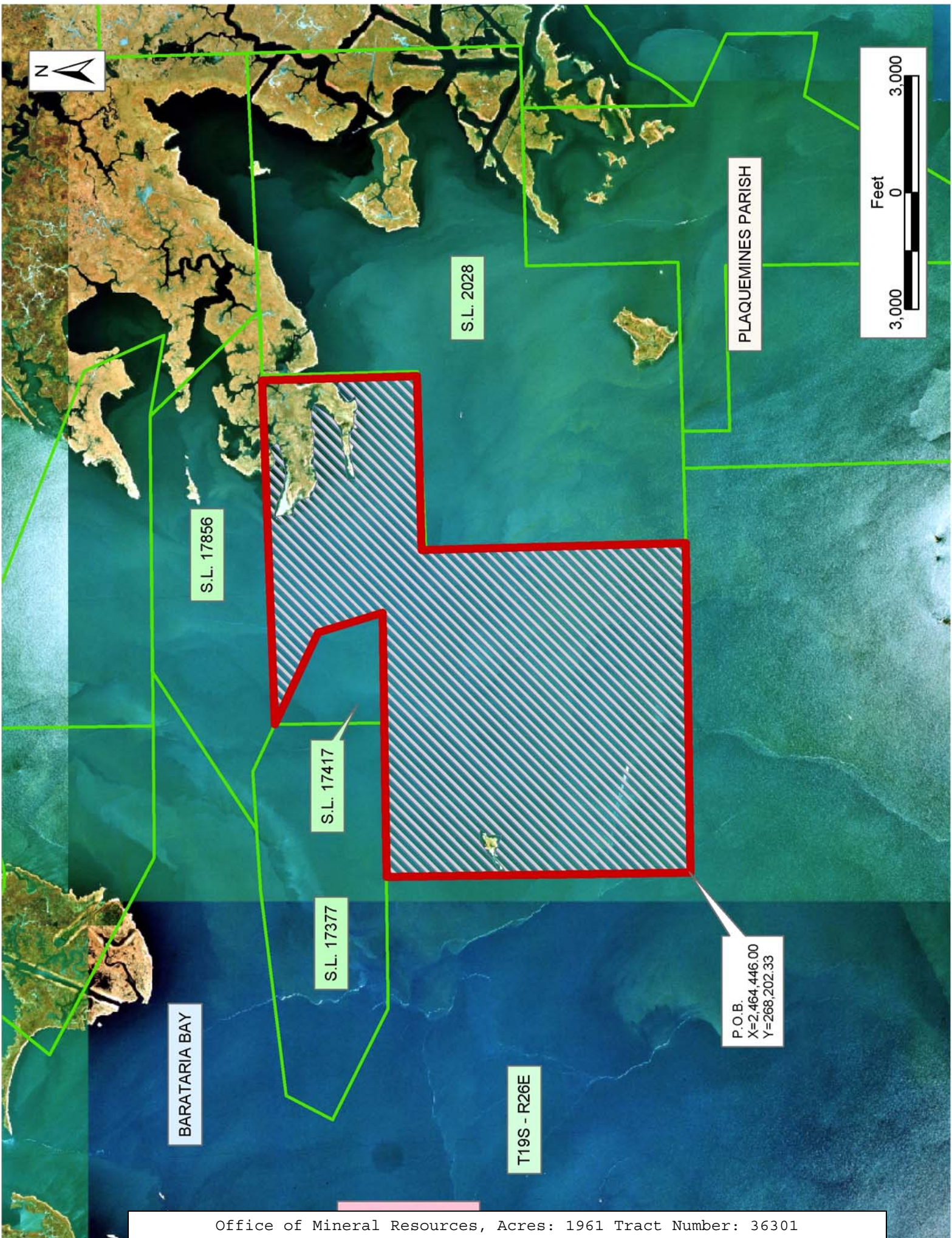
NOTE: The State of Louisiana does hereby reserve, and this lease shall be subject to, the imprescriptible right of surface use in the nature of a servitude in favor of the Department of Natural Resources, including its Offices and Commissions, for the sole purpose of implementing, constructing, servicing and maintaining approved coastal zone management and/or restoration projects. Utilization of any and all rights derived under this lease by the mineral lessee, its agents, successors or assigns, shall not interfere with nor hinder the reasonable surface use by the Department of Natural Resources, its Offices or Commissions, as herein above reserved.

NOTE: The Department of Wildlife and Fisheries has designated certain areas in the coastal waters of the State of Louisiana as Oyster Seed Bed Areas. The exact location of those Seed Bed Areas must be obtained from the Department of Wildlife and Fisheries and any work done under a mineral lease from the State of Louisiana may necessarily be conducted in conformity with the rules and regulations promulgated by the said Department of Wildlife and Fisheries for Oyster Seed Bed Areas.

Applicant: Reaf Energy Partners

Bidder	Cash Payment	Price/Acre	Rental	Oil	Gas	Other





S.L. 17856

S.L. 2028

PLAQUEMINES PARISH

BARATARIA BAY

S.L. 17417

S.L. 17377

T19S - R26E

P.O.B.  
X=2,464,446.00  
Y=268,202.33



**TRACT 36302 - Plaquemines Parish, Louisiana**

All of the lands now or formerly constituting the beds and bottoms of all water bodies of every nature and description the title of which vests in the State of Louisiana, together with all islands arising therein and other lands formed by accretion or by reliction, where allowed by law, excepting tax adjudicated lands, and not presently under mineral lease on May 12, 2004, situated in Plaquemines Parish, Louisiana, and more particularly described as follows: Beginning at a point having Coordinates of X = 2,464,446.00 and Y = 271,200.00; thence West 7,646.00 feet to a point having Coordinates of X = 2,456,800.00 and Y = 271,200.00; thence North 1,800.00 feet to a point having Coordinates of X = 2,456,800.00 and Y = 273,000.00; thence West 3,500.00 feet to a point having Coordinates of X = 2,453,300.00 and Y = 273,000.00; thence South 1,800.00 feet to a point having Coordinates of X = 2,453,300.00 and Y = 271,200.00; thence West 5,800.00 feet to a point having Coordinates of X = 2,447,500.00 and Y = 271,200.00; thence North 7,450.00 feet to a point having Coordinates of X = 2,447,500.00 and Y = 278,650.00; thence East 11,378.00 feet to the most Northern Northwest corner of State Lease No. 17377 having Coordinates of X = 2,458,878.00 and Y = 278,650.00; thence along the boundaries of said State Lease No. 17377 the following: South 28 degrees 23 minutes 35 seconds West 1,345.90 feet, South 62 degrees 41 minutes 40 seconds East 3,195.74 feet and East 3,368.35 feet to a point on its South line having Coordinates of X = 2,464,446.00 and Y = 276,000.00; thence South 4,800.00 feet to the point of beginning, containing approximately **2,432.43 acres**, all as more particularly outlined on a plat on file in the Office of Mineral Resources, Department of Natural Resources. All bearings, distances and coordinates are based on Louisiana Coordinate System of 1927, (North or South Zone), where applicable.

NOTE: The above description of the Tract nominated for lease has been provided and corrected, where required, exclusively by the nomination party. Any mineral lease selected from this Tract and awarded by the Louisiana State Mineral Board shall be without warranty of any kind, either express, implied, or statutory, including, but not limited to, the implied warranties of merchantability and fitness for a particular purpose. Should the mineral lease awarded by the Louisiana State Mineral Board be subsequently modified, cancelled or abrogated due to the existence of conflicting leases, operating agreements, private claims or other future obligations or conditions which may affect all or any portion of the leased Tract, it shall not relieve the Lessee of the obligation to pay any bonus due thereon to the Louisiana State Mineral Board, nor shall the Louisiana State Mineral Board be obligated to refund any consideration paid by the Lessor prior to such modification, cancellation, or abrogation, including, but not limited to, bonuses, rentals and royalties.

NOTE: The State of Louisiana does hereby reserve, and this lease shall be subject to, the imprescriptible right of surface use in the nature of a servitude in favor of the Department of Natural Resources, including its Offices and Commissions, for the sole purpose of implementing,

constructing, servicing and maintaining approved coastal zone management and/or restoration projects. Utilization of any and all rights derived under this lease by the mineral lessee, its agents, successors or assigns, shall not interfere with nor hinder the reasonable surface use by the Department of Natural Resources, its Offices or Commissions, as herein above reserved.

NOTE: The Department of Wildlife and Fisheries has designated certain areas in the coastal waters of the State of Louisiana as Oyster Seed Bed Areas. The exact location of those Seed Bed Areas must be obtained from the Department of Wildlife and Fisheries and any work done under a mineral lease from the State of Louisiana may necessarily be conducted in conformity with the rules and regulations promulgated by the said Department of Wildlife and Fisheries for Oyster Seed Bed Areas.

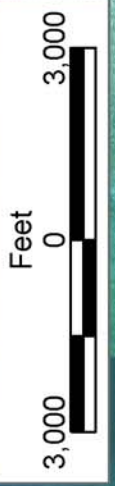
Applicant: Reaf Energy Partners

Bidder	Cash Payment	Price/Acre	Rental	Oil	Gas	Other



S.L. 17377

P.O.B.  
X=2,464,446.00  
Y=271,200.00



PLAQUEMINES PARISH

BARATARIA BAY



**TRACT 36303 - Plaquemines Parish, Louisiana**

All of the lands now or formerly constituting the beds and bottoms of all water bodies of every nature and description the title of which vests in the State of Louisiana, together with all islands arising therein and other lands formed by accretion or by reliction, where allowed by law, excepting tax adjudicated lands, and not presently under mineral lease on May 12, 2004, situated in Plaquemines Parish, Louisiana, and more particularly described as follows: Beginning at a point having Coordinates of X = 2,464,446.00 and Y = 271,200.00; thence South 6,426.00 feet to a point having Coordinates of X = 2,464,446.00 and Y = 264,774.00; thence West 16,946.00 feet to a point having Coordinates of X = 2,447,500.00 and Y = 264,774.00; thence North 6,426.00 feet to a point having Coordinates of X = 2,447,500.00 and Y = 271,200.00; thence East 16,946.00 feet to the point of beginning, containing approximately **2,499.89 acres**, all as more particularly outlined on a plat on file in the Office of Mineral Resources, Department of Natural Resources. All bearings, distances and coordinates are based on Louisiana Coordinate System of 1927, (North or South Zone), where applicable.

NOTE: The above description of the Tract nominated for lease has been provided and corrected, where required, exclusively by the nomination party. Any mineral lease selected from this Tract and awarded by the Louisiana State Mineral Board shall be without warranty of any kind, either express, implied, or statutory, including, but not limited to, the implied warranties of merchantability and fitness for a particular purpose. Should the mineral lease awarded by the Louisiana State Mineral Board be subsequently modified, cancelled or abrogated due to the existence of conflicting leases, operating agreements, private claims or other future obligations or conditions which may affect all or any portion of the leased Tract, it shall not relieve the Lessee of the obligation to pay any bonus due thereon to the Louisiana State Mineral Board, nor shall the Louisiana State Mineral Board be obligated to refund any consideration paid by the Lessor prior to such modification, cancellation, or abrogation, including, but not limited to, bonuses, rentals and royalties.

NOTE: The State of Louisiana does hereby reserve, and this lease shall be subject to, the imprescriptible right of surface use in the nature of a servitude in favor of the Department of Natural Resources, including its Offices and Commissions, for the sole purpose of implementing, constructing, servicing and maintaining approved coastal zone management and/or restoration projects. Utilization of any and all rights derived under this lease by the mineral lessee, its agents, successors or assigns, shall not interfere with nor hinder the reasonable surface use by the Department of Natural Resources, its Offices or Commissions, as herein above reserved.

NOTE: The Department of Wildlife and Fisheries has designated certain areas in the coastal waters of the State of Louisiana as Oyster Seed Bed Areas. The exact location of those Seed Bed Areas must be obtained from

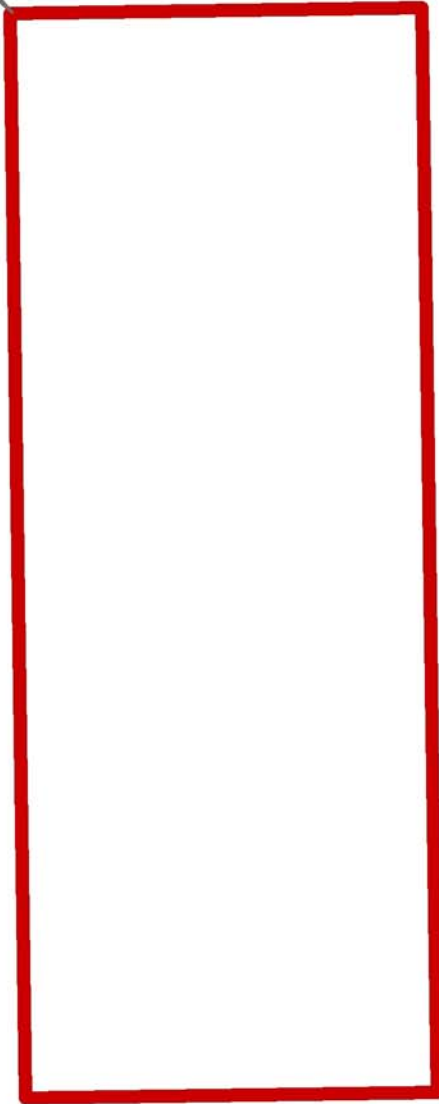
the Department of Wildlife and Fisheries and any work done under a mineral lease from the State of Louisiana may necessarily be conducted in conformity with the rules and regulations promulgated by the said Department of Wildlife and Fisheries for Oyster Seed Bed Areas.

Applicant: Reaf Energy Partners

Bidder	Cash Payment	Price/Acre	Rental	Oil	Gas	Other



P.O.B.  
X=2,464,446.00  
Y=271,200.00



BARATARIA BAY

PLAQUEMINES PARISH





**TRACT 36304 - Plaquemines Parish, Louisiana**

All of the lands now or formerly constituting the beds and bottoms of all water bodies of every nature and description the title of which vests in the State of Louisiana, together with all islands arising therein and other lands formed by accretion or by reliction, where allowed by law, excepting tax adjudicated lands, and not presently under mineral lease on May 12, 2004, situated in Plaquemines Parish, Louisiana, and more particularly described as follows: Beginning at a point having Coordinates of X = 2,464,446.00 and Y = 268,202.33; thence East approximately 8,458 feet to the most Westerly Southwest corner of State Lease No. 2028, as amended; thence Easterly approximately 626 feet along the boundary of said State Lease No. 2028 to the intersection of a North South line having a Coordinate of X = 2,473,530.00; thence South approximately 9,863 feet to a point having Coordinates of X = 2,473,530.00 and Y = 258,348.00; thence West 9,084.00 feet to a point having Coordinates of X = 2,464,446.00 and Y = 258,348.00; thence North 9,854.33 feet to the point of beginning, **LESS AND EXCEPT** any portion of State Lease No. 2028, as amended, that may fall within the above described tract, containing approximately **2,055 acres**, all as more particularly outlined on a plat on file in the Office of Mineral Resources, Department of Natural Resources. All bearings, distances and coordinates are based on Louisiana Coordinate System of 1927, (North or South Zone), where applicable.

NOTE: The above description of the Tract nominated for lease has been provided and corrected, where required, exclusively by the nomination party. Any mineral lease selected from this Tract and awarded by the Louisiana State Mineral Board shall be without warranty of any kind, either express, implied, or statutory, including, but not limited to, the implied warranties of merchantability and fitness for a particular purpose. Should the mineral lease awarded by the Louisiana State Mineral Board be subsequently modified, cancelled or abrogated due to the existence of conflicting leases, operating agreements, private claims or other future obligations or conditions which may affect all or any portion of the leased Tract, it shall not relieve the Lessee of the obligation to pay any bonus due thereon to the Louisiana State Mineral Board, nor shall the Louisiana State Mineral Board be obligated to refund any consideration paid by the Lessor prior to such modification, cancellation, or abrogation, including, but not limited to, bonuses, rentals and royalties.

NOTE: The State of Louisiana does hereby reserve, and this lease shall be subject to, the imprescriptible right of surface use in the nature of a servitude in favor of the Department of Natural Resources, including its Offices and Commissions, for the sole purpose of implementing, constructing, servicing and maintaining approved coastal zone management and/or restoration projects. Utilization of any and all rights derived under this lease by the mineral lessee, its agents, successors or assigns, shall not interfere with nor hinder the reasonable surface use by the Department of Natural Resources, its Offices or Commissions, as herein above reserved.

NOTE: The Department of Wildlife and Fisheries has designated certain areas in the coastal waters of the State of Louisiana as Oyster Seed Bed Areas. The exact location of those Seed Bed Areas must be obtained from the Department of Wildlife and Fisheries and any work done under a mineral lease from the State of Louisiana may necessarily be conducted in conformity with the rules and regulations promulgated by the said Department of Wildlife and Fisheries for Oyster Seed Bed Areas.

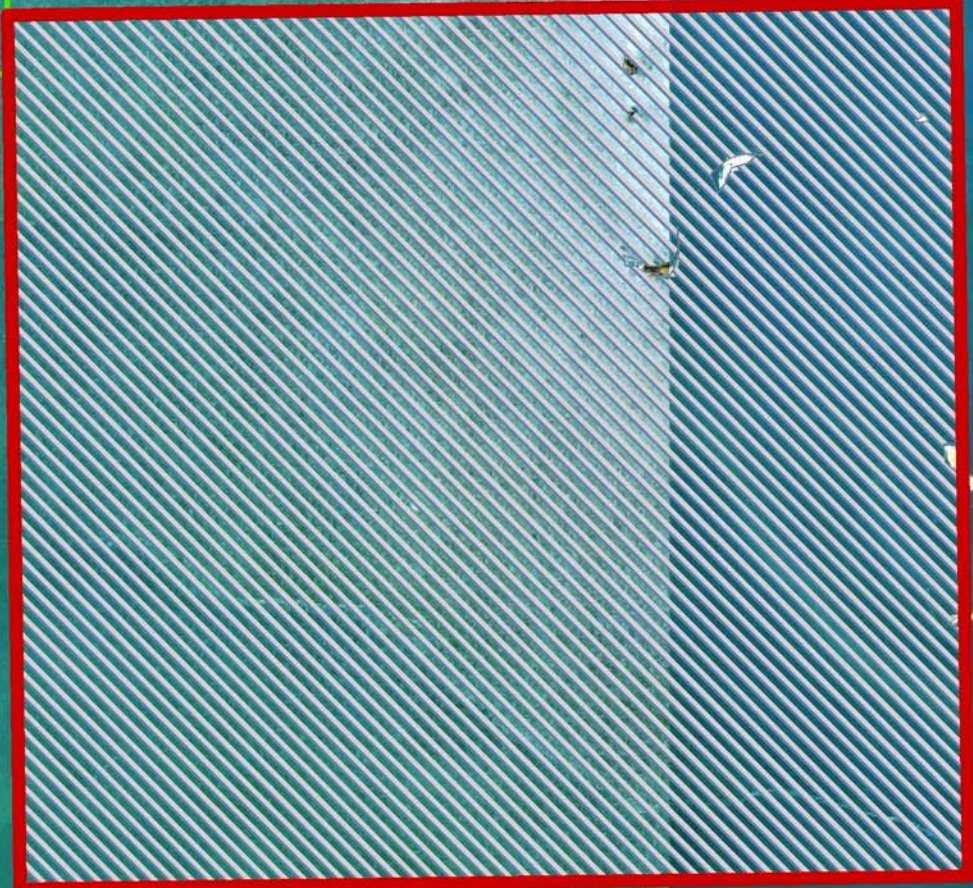
Applicant: Reaf Energy Partners

Bidder	Cash Payment	Price/Acre	Rental	Oil	Gas	Other



S.L. 2028

T20S - R26E



P.O.B.  
X=2,464,446.00  
Y=268,202.33

BARATARIA BAY

PLAQUEMINES  
PARISH



**TRACT 36305 - Plaquemines Parish, Louisiana**

All of the lands now or formerly constituting the beds and bottoms of all water bodies of every nature and description the title of which vests in the State of Louisiana, together with all islands arising therein and other lands formed by accretion or by reliction, where allowed by law, excepting tax adjudicated lands, and not presently under mineral lease on May 12, 2004, situated in Plaquemines Parish, Louisiana, and more particularly described as follows: Beginning at a point having Coordinates of X = 2,464,446.00 and Y = 264,774.00; thence South 6,426.00 feet to a point having Coordinates of X = 2,464,446.00 and Y = 258,348.00; thence West 16,946.00 feet to a point having Coordinates of X = 2,447,500.00 and Y = 258,348.00; thence North 6,426.00 feet to a point having Coordinates of X = 2,447,500.00 and Y = 264,774.00; thence East 16,946.00 feet to the point of beginning, containing approximately **2,404 acres**, all as more particularly outlined on a plat on file in the Office of Mineral Resources, Department of Natural Resources. All bearings, distances and coordinates are based on Louisiana Coordinate System of 1927, (North or South Zone), where applicable.

NOTE: The above description of the Tract nominated for lease has been provided and corrected, where required, exclusively by the nomination party. Any mineral lease selected from this Tract and awarded by the Louisiana State Mineral Board shall be without warranty of any kind, either express, implied, or statutory, including, but not limited to, the implied warranties of merchantability and fitness for a particular purpose. Should the mineral lease awarded by the Louisiana State Mineral Board be subsequently modified, cancelled or abrogated due to the existence of conflicting leases, operating agreements, private claims or other future obligations or conditions which may affect all or any portion of the leased Tract, it shall not relieve the Lessee of the obligation to pay any bonus due thereon to the Louisiana State Mineral Board, nor shall the Louisiana State Mineral Board be obligated to refund any consideration paid by the Lessor prior to such modification, cancellation, or abrogation, including, but not limited to, bonuses, rentals and royalties.

NOTE: The State of Louisiana does hereby reserve, and this lease shall be subject to, the imprescriptible right of surface use in the nature of a servitude in favor of the Department of Natural Resources, including its Offices and Commissions, for the sole purpose of implementing, constructing, servicing and maintaining approved coastal zone management and/or restoration projects. Utilization of any and all rights derived under this lease by the mineral lessee, its agents, successors or assigns, shall not interfere with nor hinder the reasonable surface use by the Department of Natural Resources, its Offices or Commissions, as herein above reserved.

NOTE: The Department of Wildlife and Fisheries has designated certain areas in the coastal waters of the State of Louisiana as Oyster Seed Bed Areas. The exact location of those Seed Bed Areas must be obtained from

the Department of Wildlife and Fisheries and any work done under a mineral lease from the State of Louisiana may necessarily be conducted in conformity with the rules and regulations promulgated by the said Department of Wildlife and Fisheries for Oyster Seed Bed Areas.

Applicant: Reaf Energy Partners

Bidder	Cash Payment	Price/Acre	Rental	Oil	Gas	Other



P.O.B.  
X=2,464,446.00  
Y=264,774.00

PLAQUEMINES PARISH



BARATARIA BAY



**TRACT 36306 - Terrebonne Parish, Louisiana**

All of the lands now or formerly constituting the beds and bottoms of all water bodies of every nature and description the title of which vests in the State of Louisiana, together with all islands arising therein and other lands formed by accretion or by reliction, where allowed by law, excepting tax adjudicated lands, and not presently under mineral lease on May 12, 2004, situated in Terrebonne Parish, Louisiana, and more particularly described as follows: Beginning at a point having Coordinates of X = 2,034,175.00 and Y = 255,835.00; thence North 5,575.87 feet to a point on the Southern boundary of State Lease No. 2077, having Coordinates of X = 2,034,175.00 and Y = 261,410.87; thence Southeasterly along said Southern boundary of said State Lease No. 2077 to a point having Coordinates of X = 2,034,550.00 and Y = 261,150.00; thence Northeasterly to a point having Coordinates of X = 2,034,865.00 and Y = 262,420.00; thence Southeasterly, Easterly, and Northeasterly to a point having Coordinates of X = 2,040,144.04 and Y = 264,400.00; thence East approximately 807 feet to a point on the shoreline of Four League Bay having a Coordinate of Y = 264,400.00; thence Southerly along said shoreline of Four League Bay to a point having a Coordinate of X = 2,043,294.10; thence South approximately 970 feet to a point having Coordinates of X = 2,043,294.10 and Y = 255,835.00; thence West 9,119.10 feet to the point of beginning, containing approximately **1,293.21 acres**, all as more particularly outlined on a plat on file in the Office of Mineral Resources, Department of Natural Resources. All bearings, distances and coordinates are based on Louisiana Coordinate System of 1927, (North or South Zone), where applicable.

NOTE: The above description of the Tract nominated for lease has been provided and corrected, where required, exclusively by the nomination party. Any mineral lease selected from this Tract and awarded by the Louisiana State Mineral Board shall be without warranty of any kind, either express, implied, or statutory, including, but not limited to, the implied warranties of merchantability and fitness for a particular purpose. Should the mineral lease awarded by the Louisiana State Mineral Board be subsequently modified, cancelled or abrogated due to the existence of conflicting leases, operating agreements, private claims or other future obligations or conditions which may affect all or any portion of the leased Tract, it shall not relieve the Lessee of the obligation to pay any bonus due thereon to the Louisiana State Mineral Board, nor shall the Louisiana State Mineral Board be obligated to refund any consideration paid by the Lessor prior to such modification, cancellation, or abrogation, including, but not limited to, bonuses, rentals and royalties.

NOTE: The State of Louisiana does hereby reserve, and this lease shall be subject to, the imprescriptible right of surface use in the nature of a servitude in favor of the Department of Natural Resources, including its Offices and Commissions, for the sole purpose of implementing, constructing, servicing and maintaining approved coastal zone management and/or restoration projects. Utilization of any and all rights derived



under this lease by the mineral lessee, its agents, successors or assigns, shall not interfere with nor hinder the reasonable surface use by the Department of Natural Resources, its Offices or Commissions, as herein above reserved.

NOTE: The Department of Wildlife and Fisheries has designated certain areas in the coastal waters of the State of Louisiana as Oyster Seed Bed Areas. The exact location of those Seed Bed Areas must be obtained from the Department of Wildlife and Fisheries and any work done under a mineral lease from the State of Louisiana may necessarily be conducted in conformity with the rules and regulations promulgated by the said Department of Wildlife and Fisheries for Oyster Seed Bed Areas.

Applicant: Fleetwood Resources, Inc.

Bidder	Cash Payment	Price/Acre	Rental	Oil	Gas	Other



TERREBONNE PARISH

T19S - R12E

S.L. 2077

ST MARY PARISH

FOUR LEAUGE BAY

P.O.B.  
X=2,034,175.00  
Y=255,835.00

