

TRACT 36288 - Portion of Block 45, Breton Sound Area, Plaquemines Parish, Louisiana

The beds and bottoms of all water bodies belonging to the State of Louisiana located in that portion of Block 45, Breton Sound Area, together with any present lands formed by accretion to the shoreline, located in Plaquemines Parish, Louisiana, and not presently under mineral lease on May 12, 2004, the geographical area of which is more fully described as follows: Beginning at the Northwest corner of Block 45, Breton Sound Area having Coordinates of X = 2,679,600.00 and Y = 307,580.00; thence East 2,000.00 feet on the North line of said Block 45 to the Northwest corner of State Lease No. 1237 having Coordinates of X = 2,681,600.00 and Y = 307,580.00; thence South 2,950.00 feet on the West line of said State Lease No. 1237 to its Southwest corner and the Northwest corner of State Lease No. 2001 having Coordinates of X = 2,681,600.00 and Y = 304,630.00; thence along the boundary of said State Lease No. 2001 the following courses: South 2,925.00 feet and East 6,025.35 feet to a point on the South line of said State Lease No. 2001 having Coordinates of X = 2,687,625.35 and Y = 301,705.00; thence Southwesterly on a straight line to a point having Coordinates of X = 2,687,610 and Y = 301,648; thence Southwesterly on a straight line to a point having Coordinates of X = 2,687,014 and Y = 300,054; thence Southwesterly on a straight line to a point having Coordinates of X = 2,685,058 and Y = 297,573; thence Southwesterly on a straight line to a point having Coordinates of X = 2,683,264 and Y = 296,069; thence Southwesterly on a straight line to the Southeast corner of State Lease No. 17691 having Coordinates of X = 2,683,000.00 and Y = 295,941.54; thence along the boundary of said State Lease No. 17691 the following courses: North 20 degrees 26 minutes 18 seconds East 3,722.81 feet, North 58 degrees 10 minutes 21 seconds West 3,413.21 feet, and West 1,800.00 feet to its Northwest corner and a point on the West line of said Block 45 having Coordinates of X = 2,679,600.00 and Y = 301,230.00; thence North 6,350.00 feet on the West line of said Block 45 to the point of beginning, containing approximately **638.18 acres**, all as more particularly outlined on a plat on file in the Office of Mineral Resources, Department of Natural Resources. All bearings, distances and coordinates are based on Louisiana Coordinate System of 1927, (North or South Zone).

NOTE: The above description of the Tract nominated for lease has been provided and corrected, where required, exclusively by the nomination party. Any mineral lease selected from this Tract and awarded by the Louisiana State Mineral Board shall be without warranty of any kind, either express, implied, or statutory, including, but not limited to, the implied warranties of merchantability and fitness for a particular purpose. Should the mineral lease awarded by the Louisiana State Mineral Board be subsequently modified, cancelled or abrogated due to the existence of conflicting leases, operating agreements, private claims or other future obligations or conditions which may affect all or any portion of the leased Tract, it shall not relieve the Lessee of the obligation to pay any bonus due thereon to the Louisiana State Mineral Board, nor shall

the Louisiana State Mineral Board be obligated to refund any consideration paid by the Lessor prior to such modification, cancellation, or abrogation, including, but not limited to, bonuses, rentals and royalties.

NOTE: The State of Louisiana does hereby reserve, and this lease shall be subject to, the imprescriptible right of surface use in the nature of a servitude in favor of the Department of Natural Resources, including its Offices and Commissions, for the sole purpose of implementing, constructing, servicing and maintaining approved coastal zone management and/or restoration projects. Utilization of any and all rights derived under this lease by the mineral lessee, its agents, successors or assigns, shall not interfere with nor hinder the reasonable surface use by the Department of Natural Resources, its Offices or Commissions, as herein above reserved.

Applicant: Angelle & Donohue Oil & Gas Properties, Inc.

Bidder	Cash Payment	Price/Acre	Rental	Oil	Gas	Other



BLOCK BS0036

SL 1230

SL 1237

BLOCK BS0045

SL 2001

PLAQUEMINES PARISH

BRETON SOUND AREA

P.O.B.
X=2,679,600.00
Y=307,580.00

BLOCK BS0046

SL 17691

SL 17689



TRACT 36289 - Jefferson and Lafourche Parishes, Louisiana

All of the lands now or formerly constituting the beds and bottoms of all water bodies of every nature and description the title of which vests in the State of Louisiana, together with all islands arising therein and other lands formed by accretion or by reliction, where allowed by law, excepting tax adjudicated lands, and not presently under mineral lease on May 12, 2004, situated in Jefferson and Lafourche Parishes, Louisiana, and more particularly described as follows: Beginning at a point on State Lease No. 2383 as amended, having Coordinates of X = 2,377,015.00 and Y = 303,475.00; thence North 1,853.95 feet to a point having Coordinates of X = 2,377,015.00 and Y = 305,328.94; thence East 2,510 feet to a point on the Southern boundary line of said State Lease No. 2383 having Coordinates of X = 2,379,525.86 and Y = 305,329.00; thence Southeasterly and Northeasterly to a point on said State Lease No. 2383 having Coordinates of X = 2,381,346.35 and Y = 305,280.00; thence Southwesterly and Northwesterly to a point on said State Lease No. 2383 having Coordinates of X = 2,382,920.00 and Y = 305,150.15; thence East 801.30 feet to a point having Coordinates of X = 2,383,721.30 and Y = 305,150.15; thence South 4,298.67 feet to a point having Coordinates of X = 2,383,721.30 and Y = 300,851.48; thence West 295.62 feet to a point having Coordinates of X = 2,383,425.68 and Y = 300,851.48; thence Northwesterly to a point on said State Lease No. 2383 having Coordinates of X = 2,379,935.79 and Y = 303,076.33; thence Northwesterly and Southwesterly to the point of beginning, **LESS AND EXCEPT**, if any, that portion of State Lease No. 2383, as amended, that may lie within the above described tract, containing approximately **317.30 acres**, all as more particularly outlined on a plat on file in the Office of Mineral Resources, Department of Natural Resources. All bearings, distances and coordinates are based on Louisiana Coordinate System of 1927, (North or South Zone), where applicable.

NOTE: The above description of the Tract nominated for lease has been provided and corrected, where required, exclusively by the nomination party. Any mineral lease selected from this Tract and awarded by the Louisiana State Mineral Board shall be without warranty of any kind, either express, implied, or statutory, including, but not limited to, the implied warranties of merchantability and fitness for a particular purpose. Should the mineral lease awarded by the Louisiana State Mineral Board be subsequently modified, cancelled or abrogated due to the existence of conflicting leases, operating agreements, private claims or other future obligations or conditions which may affect all or any portion of the leased Tract, it shall not relieve the Lessee of the obligation to pay any bonus due thereon to the Louisiana State Mineral Board, nor shall the Louisiana State Mineral Board be obligated to refund any consideration paid by the Lessor prior to such modification, cancellation, or abrogation, including, but not limited to, bonuses, rentals and royalties.

NOTE: The State of Louisiana does hereby reserve, and this lease shall be subject to, the imprescriptible right of surface use in the nature of a servitude in favor of the Department of Natural Resources, including its

Offices and Commissions, for the sole purpose of implementing, constructing, servicing and maintaining approved coastal zone management and/or restoration projects. Utilization of any and all rights derived under this lease by the mineral lessee, its agents, successors or assigns, shall not interfere with nor hinder the reasonable surface use by the Department of Natural Resources, its Offices or Commissions, as herein above reserved.

NOTE: The Department of Wildlife and Fisheries has designated certain areas in the coastal waters of the State of Louisiana as Oyster Seed Bed Areas. The exact location of those Seed Bed Areas must be obtained from the Department of Wildlife and Fisheries and any work done under a mineral lease from the State of Louisiana may necessarily be conducted in conformity with the rules and regulations promulgated by the said Department of Wildlife and Fisheries for Oyster Seed Bed Areas.

Applicant: Beta Land Service, LLC

Bidder	Cash Payment	Price/Acre	Rental	Oil	Gas	Other



JEFFERSON PARISH

S.L. 2383

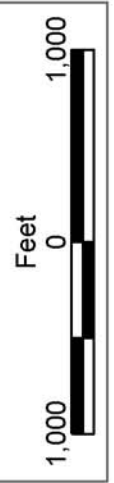
T18S - R23E

S.L. 2383

LITTLE LAKE

P.O.B.
X=2,377,015.00
Y=303,475.00

LAFORCHE PARISH



TRACT 36290 - Jefferson Parish, Louisiana

All of the lands now or formerly constituting the beds and bottoms of all water bodies of every nature and description the title of which vests in the State of Louisiana, together with all islands arising therein and other lands formed by accretion or by reliction, where allowed by law, excepting tax adjudicated lands, and not presently under mineral lease on May 12, 2004, situated in Jefferson Parish, Louisiana, and more particularly described as follows: Beginning at the Northwest corner of State Lease No. 17780 having Coordinates of X = 2,383,721.30 and Y = 298,543.18; thence North 89 degrees 25 minutes 23 seconds East 6,148.21 feet along the Northern line of said State Lease No. 17780 to its Northeast corner having Coordinates of X = 2,389,869.20 and Y = 298,605.10; thence continue North 89 degrees 25 minutes 23 seconds East 1,259.35 feet to a point having Coordinates of X = 2,391,128.49 and Y = 298,617.78; thence North 6,532.37 feet to a point having Coordinates of X = 2,391,128.49 and Y = 305,150.15; thence West 7,407.19 feet to a point having Coordinates of X = 2,383,721.30 and Y = 305,150.15; thence South 6,606.97 feet to the point of beginning, containing approximately **832 acres**, all as more particularly outlined on a plat on file in the Office of Mineral Resources, Department of Natural Resources. All bearings, distances and coordinates are based on Louisiana Coordinate System of 1927, (North or South Zone), where applicable.

NOTE: The above description of the Tract nominated for lease has been provided and corrected, where required, exclusively by the nomination party. Any mineral lease selected from this Tract and awarded by the Louisiana State Mineral Board shall be without warranty of any kind, either express, implied, or statutory, including, but not limited to, the implied warranties of merchantability and fitness for a particular purpose. Should the mineral lease awarded by the Louisiana State Mineral Board be subsequently modified, cancelled or abrogated due to the existence of conflicting leases, operating agreements, private claims or other future obligations or conditions which may affect all or any portion of the leased Tract, it shall not relieve the Lessee of the obligation to pay any bonus due thereon to the Louisiana State Mineral Board, nor shall the Louisiana State Mineral Board be obligated to refund any consideration paid by the Lessor prior to such modification, cancellation, or abrogation, including, but not limited to, bonuses, rentals and royalties.

NOTE: The State of Louisiana does hereby reserve, and this lease shall be subject to, the imprescriptible right of surface use in the nature of a servitude in favor of the Department of Natural Resources, including its Offices and Commissions, for the sole purpose of implementing, constructing, servicing and maintaining approved coastal zone management and/or restoration projects. Utilization of any and all rights derived under this lease by the mineral lessee, its agents, successors or assigns, shall not interfere with nor hinder the reasonable surface use by the Department of Natural Resources, its Offices or Commissions, as herein above reserved.

NOTE: The Department of Wildlife and Fisheries has designated certain areas in the coastal waters of the State of Louisiana as Oyster Seed Bed Areas. The exact location of those Seed Bed Areas must be obtained from the Department of Wildlife and Fisheries and any work done under a mineral lease from the State of Louisiana may necessarily be conducted in conformity with the rules and regulations promulgated by the said Department of Wildlife and Fisheries for Oyster Seed Bed Areas.

Applicant: Beta Land Service, LLC

Bidder	Cash Payment	Price/Acre	Rental	Oil	Gas	Other



T18S - R23E

JEFFERSON PARISH



S.L. 17780

P.O.B.
X=2,383,721.30
Y=298,543.18

S.L. 2383

LITTLE LAKE

LAFOURCIE
PARISH

TRACT 36291 - Jefferson Parish, Louisiana

All of the lands now or formerly constituting the beds and bottoms of all water bodies of every nature and description the title of which vests in the State of Louisiana, together with all islands arising therein and other lands formed by accretion or by reliction, where allowed by law, excepting tax adjudicated lands, and not presently under mineral lease on May 12, 2004, situated in Jefferson Parish, Louisiana, and more particularly described as follows: Beginning at a point having Coordinates of X = 2,391,128.49 and Y = 298,617.78; thence East 7,421.10 feet to a point having Coordinates of X = 2,398,549.58 and Y = 298,617.78; thence North 6,532.37 feet to a point having Coordinates of X = 2,398,549.58 and Y = 305,150.15; thence West 7,421.1 feet to a point having Coordinates of X = 2,391,128.49 and Y = 305,150.15; thence South 6,532.37 feet to the point of beginning, containing approximately **312 acres**, all as more particularly outlined on a plat on file in the Office of Mineral Resources, Department of Natural Resources. All bearings, distances and coordinates are based on Louisiana Coordinate System of 1927, (North or South Zone), where applicable.

NOTE: The above description of the Tract nominated for lease has been provided and corrected, where required, exclusively by the nomination party. Any mineral lease selected from this Tract and awarded by the Louisiana State Mineral Board shall be without warranty of any kind, either express, implied, or statutory, including, but not limited to, the implied warranties of merchantability and fitness for a particular purpose. Should the mineral lease awarded by the Louisiana State Mineral Board be subsequently modified, cancelled or abrogated due to the existence of conflicting leases, operating agreements, private claims or other future obligations or conditions which may affect all or any portion of the leased Tract, it shall not relieve the Lessee of the obligation to pay any bonus due thereon to the Louisiana State Mineral Board, nor shall the Louisiana State Mineral Board be obligated to refund any consideration paid by the Lessor prior to such modification, cancellation, or abrogation, including, but not limited to, bonuses, rentals and royalties.

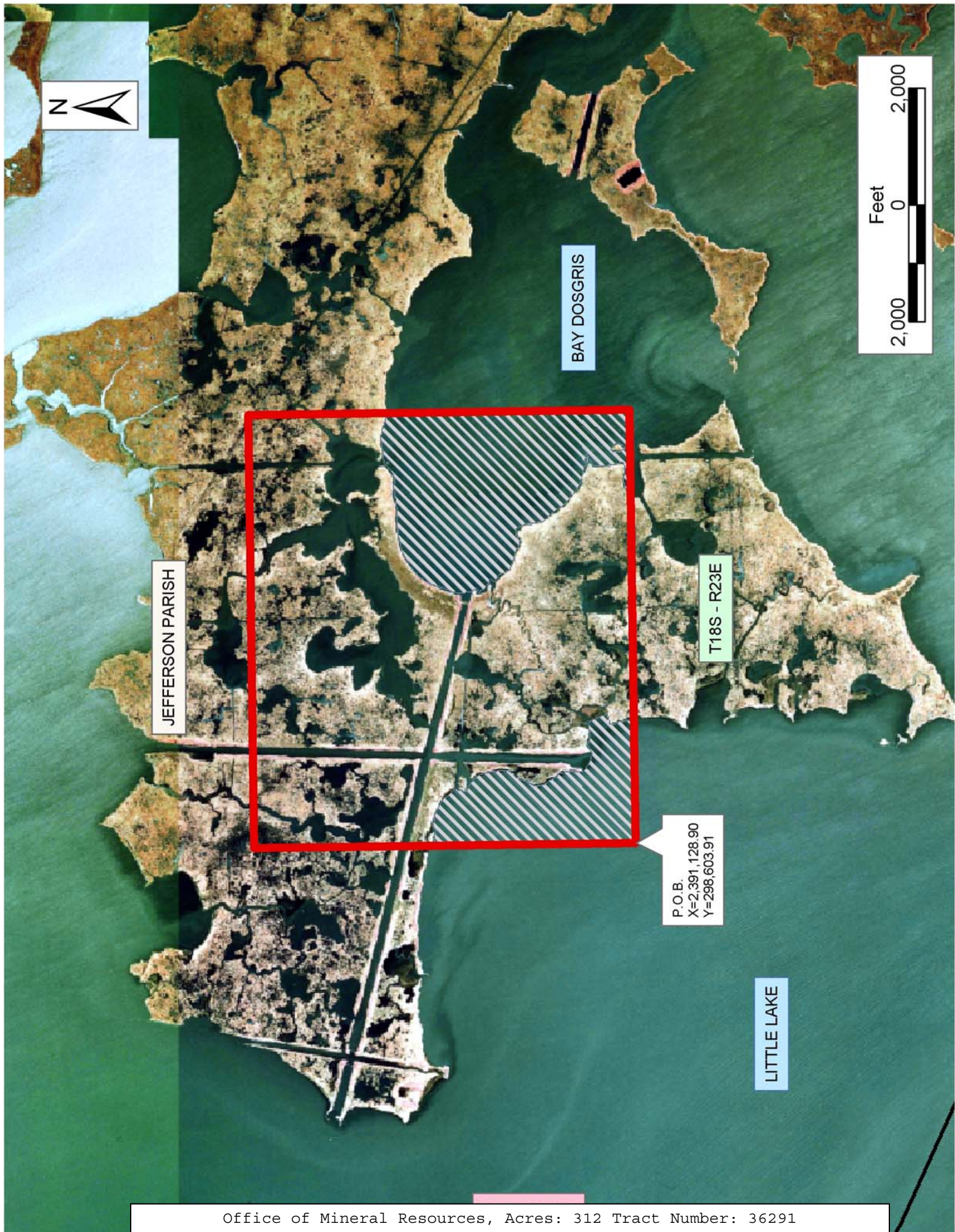
NOTE: The State of Louisiana does hereby reserve, and this lease shall be subject to, the imprescriptible right of surface use in the nature of a servitude in favor of the Department of Natural Resources, including its Offices and Commissions, for the sole purpose of implementing, constructing, servicing and maintaining approved coastal zone management and/or restoration projects. Utilization of any and all rights derived under this lease by the mineral lessee, its agents, successors or assigns, shall not interfere with nor hinder the reasonable surface use by the Department of Natural Resources, its Offices or Commissions, as herein above reserved.

NOTE: The Department of Wildlife and Fisheries has designated certain areas in the coastal waters of the State of Louisiana as Oyster Seed Bed Areas. The exact location of those Seed Bed Areas must be obtained from

the Department of Wildlife and Fisheries and any work done under a mineral lease from the State of Louisiana may necessarily be conducted in conformity with the rules and regulations promulgated by the said Department of Wildlife and Fisheries for Oyster Seed Bed Areas.

Applicant: Beta Land Service, LLC

Bidder	Cash Payment	Price/Acre	Rental	Oil	Gas	Other



JEFFERSON PARISH

BAY DOSGRIS

LITTLE LAKE

T18S - R23E

P.O.B.
X=2,391,128.90
Y=298,603.91

TRACT 36292 - Lafourche Parish, Louisiana

All of the lands now or formerly constituting the beds and bottoms of all water bodies of every nature and description the title of which vests in the State of Louisiana, together with all islands arising therein and other lands formed by accretion or by reliction, where allowed by law, excepting tax adjudicated lands, and not presently under mineral lease on May 12, 2004, situated in Lafourche Parish, Louisiana, and more particularly described as follows: Beginning at the Southwest corner of State Lease No. 17642 having Coordinates of X = 2,363,873.00 and Y = 302,218.50; thence South 4,015.94 feet to a point on the North line of State Lease No. 17260 having Coordinates of X = 2,363,873.00 and Y = 298,202.56; thence North 88 degrees 21 minutes 15 seconds East 4,345.79 feet along the North line of said State Lease No. 17260 to a point having Coordinates of X = 2,368,216.99 and Y = 298,327.38; thence North 6,879.82 feet to a point having Coordinates of X = 2,368,216.99 and Y = 305,207.20; thence West 927.99 feet to the Southeast corner of said State Lease No. 17642 having Coordinates of X = 2,367,289.00 and Y = 305,207.20; thence South 48 degrees 49 minutes 01 seconds West 4,538.88 feet along the Southeastern boundary of said State Lease No. 17642 to the point of beginning, containing approximately **570 acres**, all as more particularly outlined on a plat on file in the Office of Mineral Resources, Department of Natural Resources. All bearings, distances and coordinates are based on Louisiana Coordinate System of 1927, (North or South Zone), where applicable.

NOTE: The above description of the Tract nominated for lease has been provided and corrected, where required, exclusively by the nomination party. Any mineral lease selected from this Tract and awarded by the Louisiana State Mineral Board shall be without warranty of any kind, either express, implied, or statutory, including, but not limited to, the implied warranties of merchantability and fitness for a particular purpose. Should the mineral lease awarded by the Louisiana State Mineral Board be subsequently modified, cancelled or abrogated due to the existence of conflicting leases, operating agreements, private claims or other future obligations or conditions which may affect all or any portion of the leased Tract, it shall not relieve the Lessee of the obligation to pay any bonus due thereon to the Louisiana State Mineral Board, nor shall the Louisiana State Mineral Board be obligated to refund any consideration paid by the Lessor prior to such modification, cancellation, or abrogation, including, but not limited to, bonuses, rentals and royalties.

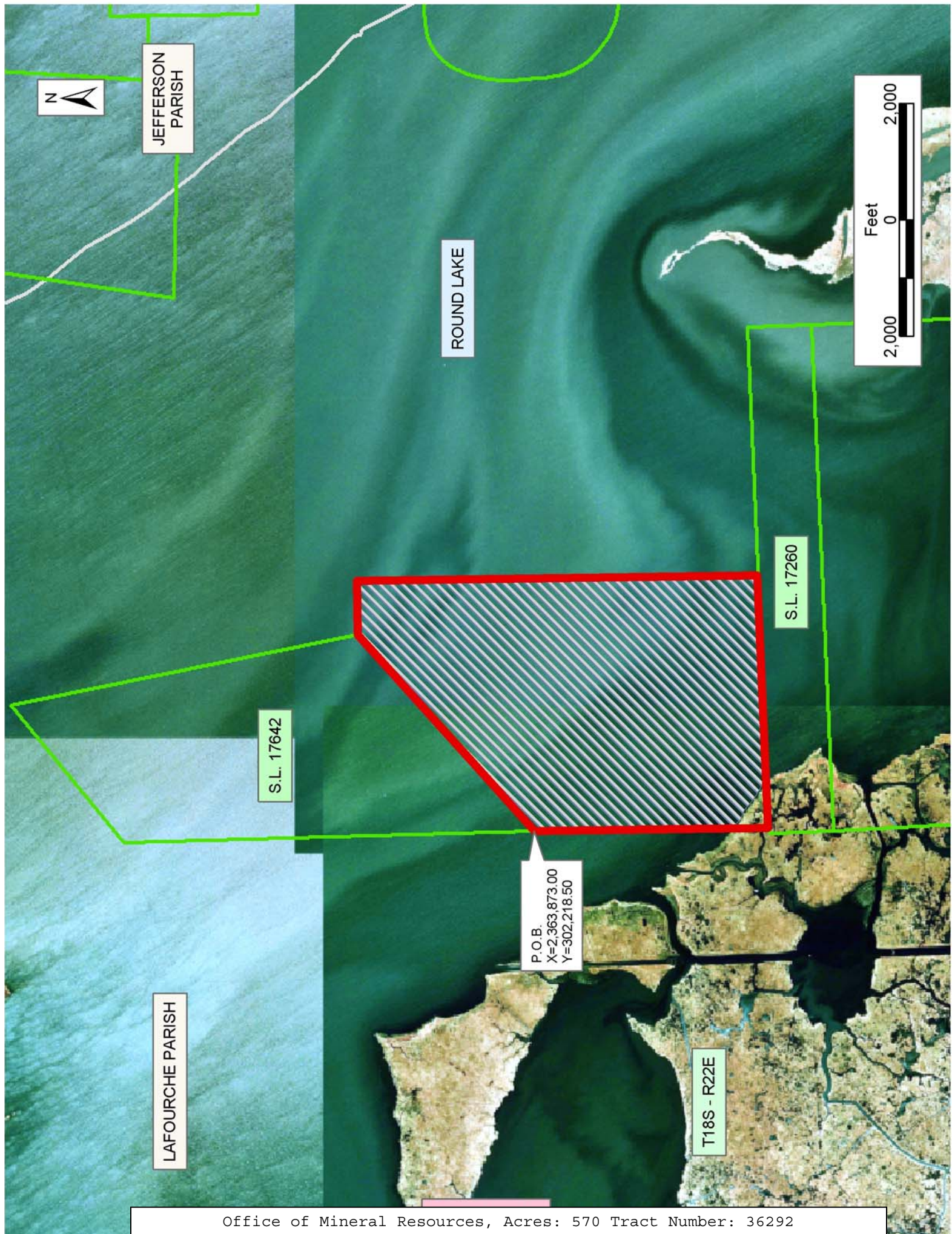
NOTE: The State of Louisiana does hereby reserve, and this lease shall be subject to, the imprescriptible right of surface use in the nature of a servitude in favor of the Department of Natural Resources, including its Offices and Commissions, for the sole purpose of implementing, constructing, servicing and maintaining approved coastal zone management and/or restoration projects. Utilization of any and all rights derived under this lease by the mineral lessee, its agents, successors or assigns, shall not interfere with nor hinder the reasonable surface use by the

Department of Natural Resources, its Offices or Commissions, as herein above reserved.

NOTE: The Department of Wildlife and Fisheries has designated certain areas in the coastal waters of the State of Louisiana as Oyster Seed Bed Areas. The exact location of those Seed Bed Areas must be obtained from the Department of Wildlife and Fisheries and any work done under a mineral lease from the State of Louisiana may necessarily be conducted in conformity with the rules and regulations promulgated by the said Department of Wildlife and Fisheries for Oyster Seed Bed Areas.

Applicant: Beta Land Services, LLC

Bidder	Cash Payment	Price/Acre	Rental	Oil	Gas	Other



TRACT 36293 - Lafourche Parish, Louisiana

All of the lands now or formerly constituting the beds and bottoms of all water bodies of every nature and description the title of which vests in the State of Louisiana, together with all islands arising therein and other lands formed by accretion or by reliction, where allowed by law, excepting tax adjudicated lands, and not presently under mineral lease on May 12, 2004, situated in Lafourche Parish, Louisiana, and more particularly described as follows: Beginning at a point having Coordinates of X = 2,368,216.99 and Y = 305,207.20; thence East 3,740.56 feet to a point having Coordinates of X = 2,371,957.56 and Y = 305,207.20; thence South 6,772.33 feet to a point on the North line of State Lease No. 17260 having Coordinates of X = 2,371,957.56 and Y = 298,434.87; thence South 88 degrees 21 minutes 15 seconds West 3,742.11 feet along the Northern boundary of said State Lease No. 17260 to a point having Coordinates of X = 2,368,216.99 and Y = 298,327.38; thence North 6,879.82 feet to the point of beginning, containing approximately **586.17 acres**, all as more particularly outlined on a plat on file in the Office of Mineral Resources, Department of Natural Resources. All bearings, distances and coordinates are based on Louisiana Coordinate System of 1927, (North or South Zone), where applicable.

NOTE: The above description of the Tract nominated for lease has been provided and corrected, where required, exclusively by the nomination party. Any mineral lease selected from this Tract and awarded by the Louisiana State Mineral Board shall be without warranty of any kind, either express, implied, or statutory, including, but not limited to, the implied warranties of merchantability and fitness for a particular purpose. Should the mineral lease awarded by the Louisiana State Mineral Board be subsequently modified, cancelled or abrogated due to the existence of conflicting leases, operating agreements, private claims or other future obligations or conditions which may affect all or any portion of the leased Tract, it shall not relieve the Lessee of the obligation to pay any bonus due thereon to the Louisiana State Mineral Board, nor shall the Louisiana State Mineral Board be obligated to refund any consideration paid by the Lessor prior to such modification, cancellation, or abrogation, including, but not limited to, bonuses, rentals and royalties.

NOTE: The State of Louisiana does hereby reserve, and this lease shall be subject to, the imprescriptible right of surface use in the nature of a servitude in favor of the Department of Natural Resources, including its Offices and Commissions, for the sole purpose of implementing, constructing, servicing and maintaining approved coastal zone management and/or restoration projects. Utilization of any and all rights derived under this lease by the mineral lessee, its agents, successors or assigns, shall not interfere with nor hinder the reasonable surface use by the Department of Natural Resources, its Offices or Commissions, as herein above reserved.

NOTE: The Department of Wildlife and Fisheries has designated certain areas in the coastal waters of the State of Louisiana as Oyster Seed Bed Areas. The exact location of those Seed Bed Areas must be obtained from the Department of Wildlife and Fisheries and any work done under a mineral lease from the State of Louisiana may necessarily be conducted in conformity with the rules and regulations promulgated by the said Department of Wildlife and Fisheries for Oyster Seed Bed Areas.

Applicant: Beta Land Service, LLC

Bidder	Cash Payment	Price/Acre	Rental	Oil	Gas	Other



JEFFERSON
PARISH

ROUND LAKE

T18S - R23E



P.O.B.
X=2,368,216.99
Y=305,207.20

S.L. 17260

LAFOURCHE
PARISH

TRACT 36294 - Lafourche Parish, Louisiana

All of the lands now or formerly constituting the beds and bottoms of all water bodies of every nature and description the title of which vests in the State of Louisiana, together with all islands arising therein and other lands formed by accretion or by reliction, where allowed by law, excepting tax adjudicated lands, and not presently under mineral lease on May 12, 2004, situated in Lafourche Parish, Louisiana, and more particularly described as follows: Beginning at a point on the Northern boundary of State Lease No. 17260 having Coordinates of X = 2,371,957.57 and Y = 298,434.87; thence North 88 degrees 21 minutes 15 seconds East 520.87 feet along Northern boundary of State Lease No. 17260 to a point having Coordinates of X = 2,372,478.22 and Y = 298,449.83; thence North 89 degrees 41 minutes 12 seconds East 30.78 feet to a point having Coordinates of X = 2,372,509.00 and Y = 298,450.00; thence North 72 degrees 18 minutes 32 seconds East 4,557.26 feet to a point having Coordinates of X = 2,376,850.73 and Y = 299,834.89; thence North 1,740.11 feet to a point having Coordinates of X = 2,376,850.01 and Y = 301,575.81; thence Northerly along State Lease No. 2383, as amended, to a point having Coordinates of X = 2,376,790.28 and Y = 302,205.38; thence Northeasterly to a point having Coordinates of X = 2,377,015.00 and Y = 303,475.01; thence North 1,732.20 feet to a point having Coordinates of X = 2,377,015.00 and Y = 305,207.20; thence West 5,057.44 feet to a point having Coordinates of X = 2,371,957.56 and Y = 305,207.20; thence South 6,772.38 feet to the point of beginning, **LESS AND EXCEPT**, if any, that portion of State Lease No. 2383, as amended, that may lie within the above described tract, containing approximately **697.71 acres**, all as more particularly outlined on a plat on file in the Office of Mineral Resources, Department of Natural Resources. All bearings, distances and coordinates are based on Louisiana Coordinate System of 1927, (North or South Zone), where applicable.

NOTE: The above description of the Tract nominated for lease has been provided and corrected, where required, exclusively by the nomination party. Any mineral lease selected from this Tract and awarded by the Louisiana State Mineral Board shall be without warranty of any kind, either express, implied, or statutory, including, but not limited to, the implied warranties of merchantability and fitness for a particular purpose. Should the mineral lease awarded by the Louisiana State Mineral Board be subsequently modified, cancelled or abrogated due to the existence of conflicting leases, operating agreements, private claims or other future obligations or conditions which may affect all or any portion of the leased Tract, it shall not relieve the Lessee of the obligation to pay any bonus due thereon to the Louisiana State Mineral Board, nor shall the Louisiana State Mineral Board be obligated to refund any consideration paid by the Lessor prior to such modification, cancellation, or abrogation, including, but not limited to, bonuses, rentals and royalties.

NOTE: The State of Louisiana does hereby reserve, and this lease shall be subject to, the imprescriptible right of surface use in the nature of a

servitude in favor of the Department of Natural Resources, including its Offices and Commissions, for the sole purpose of implementing, constructing, servicing and maintaining approved coastal zone management and/or restoration projects. Utilization of any and all rights derived under this lease by the mineral lessee, its agents, successors or assigns, shall not interfere with nor hinder the reasonable surface use by the Department of Natural Resources, its Offices or Commissions, as herein above reserved.

NOTE: The Department of Wildlife and Fisheries has designated certain areas in the coastal waters of the State of Louisiana as Oyster Seed Bed Areas. The exact location of those Seed Bed Areas must be obtained from the Department of Wildlife and Fisheries and any work done under a mineral lease from the State of Louisiana may necessarily be conducted in conformity with the rules and regulations promulgated by the said Department of Wildlife and Fisheries for Oyster Seed Bed Areas.

Applicant: Beta Land Service, LLC

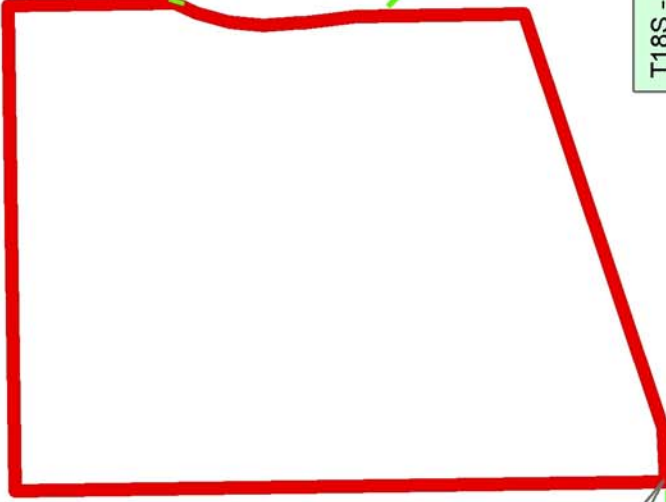
Bidder	Cash Payment	Price/Acre	Rental	Oil	Gas	Other



JEFFERSON PARISH

LAFOURCHE PARISH

ROUND LAKE



S.L. 2383

T18S - R23E

P.O.B.
X=2,371,957.57
Y=298,434.87

S.L. 17260



TRACT 36295 - Portion of Blocks 45, and 46, Breton Sound Area, Plaquemines Parish, Louisiana

All of the lands now or formerly constituting the beds and bottoms of all water bodies of every nature and description the title of which vests in the State of Louisiana, together with all islands arising therein and other lands formed by accretion or by reliction, where allowed by law, excepting tax adjudicated lands, and not presently under mineral lease on May 12, 2004, situated in Plaquemines Parish, Louisiana, and more particularly described as follows: Beginning at the Southwest corner of Block 46, Breton Sound Area having Coordinates of X = 2,664,850.00 and Y = 292,830.00; thence North 7,375.00 feet along the West line of said Block 46 to a point having Coordinates of X = 2,664,850.00 and Y = 300,205.00; thence East 7,375.00 feet to a point having Coordinates of X = 2,672,225.00 and Y = 300,205.00; thence South 4,515.10 feet to a point having Coordinates of X = 2,672,225.00 and Y = 300,250.00; thence North 60 degrees 21 minutes 04 seconds East 2,000.73 feet to the most Westerly corner of State Lease No. 17485 having Coordinates of X = 2,673,963.78 and Y = 296,679.63; thence along the boundary of said State Lease No. 17485 the following courses: South 29 degrees 38 minutes 55 seconds East 1,104.19 feet, East 1,950.00 feet, South 510.00 feet, East 2,820.00 feet and North 620.00 feet to a point on the East line of said State Lease No. 17485 and the Southwest corner of State Lease No. 17689 having Coordinates of X = 2,679,280.00 and Y = 295,830.00; thence East 320.00 feet along the South line of said State Lease No. 17689 to its Southeast corner, said point also being a point on the East line of said Block 46, a point on the West line of Block 45, and the Southwest corner of State Lease No. 17691 having Coordinates of X = 2,679,600.00 and Y = 295,830.00; thence East 3,168.97 feet along the South line of said State Lease No. 17691 to its Southeast corner having Coordinates of X = 2,682,768.97 and Y = 295,830.00; thence Southwesterly on a straight line to a point having Coordinates of X = 2,680,880.00 and Y = 294,918.00; thence Southwesterly on a straight line to a point having Coordinates of X = 2,678,009.00 and Y = 294,303.00; thence Southeasterly on a straight line to a point on the South line of said Block 46 having Coordinates of X = 2,678,166.42 and Y = 292,830.00; thence West 13,316.42 feet along the South line of said Block 46 to the point of beginning, containing approximately **1,723.53 acres**, all as more particularly outlined on a plat on file in the Office of Mineral Resources, Department of Natural Resources. All bearings, distances and coordinates are based on Louisiana Coordinate System of 1927, (North or South Zone), where applicable.

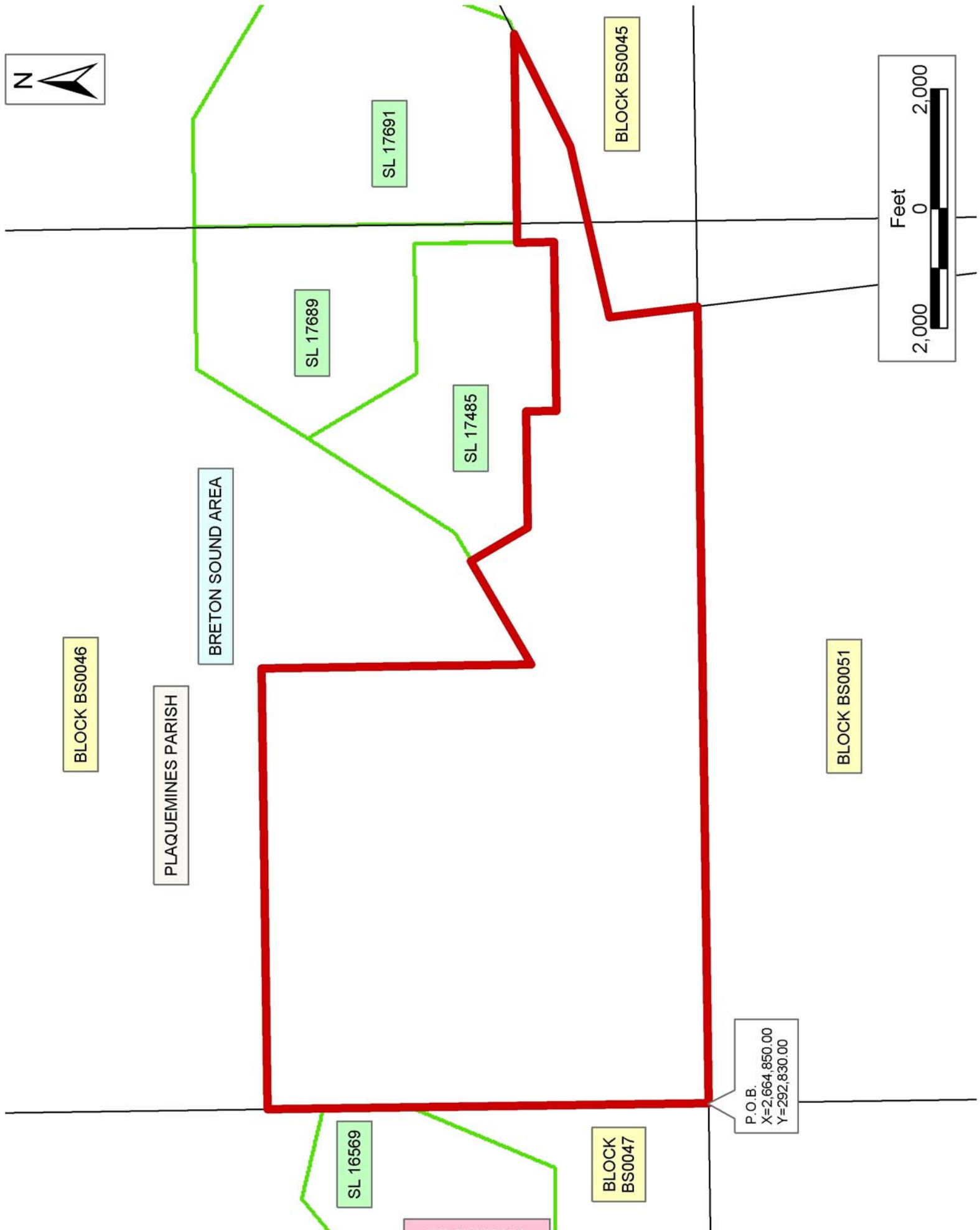
NOTE: The above description of the Tract nominated for lease has been provided and corrected, where required, exclusively by the nomination party. Any mineral lease selected from this Tract and awarded by the Louisiana State Mineral Board shall be without warranty of any kind, either express, implied, or statutory, including, but not limited to, the implied warranties of merchantability and fitness for a particular purpose. Should the mineral lease awarded by the Louisiana State Mineral Board be subsequently modified, cancelled or abrogated due to the

existence of conflicting leases, operating agreements, private claims or other future obligations or conditions which may affect all or any portion of the leased Tract, it shall not relieve the Lessee of the obligation to pay any bonus due thereon to the Louisiana State Mineral Board, nor shall the Louisiana State Mineral Board be obligated to refund any consideration paid by the Lessor prior to such modification, cancellation, or abrogation, including, but not limited to, bonuses, rentals and royalties.

NOTE: The State of Louisiana does hereby reserve, and this lease shall be subject to, the imprescriptible right of surface use in the nature of a servitude in favor of the Department of Natural Resources, including its Offices and Commissions, for the sole purpose of implementing, constructing, servicing and maintaining approved coastal zone management and/or restoration projects. Utilization of any and all rights derived under this lease by the mineral lessee, its agents, successors or assigns, shall not interfere with nor hinder the reasonable surface use by the Department of Natural Resources, its Offices or Commissions, as herein above reserved.

Applicant: Angelle & Donohue Oil & Gas Properties, Inc.

Bidder	Cash Payment	Price/Acre	Rental	Oil	Gas	Other



TRACT 36296 - Jefferson and Lafourche Parishes, Louisiana

All of the lands now or formerly constituting the beds and bottoms of all water bodies of every nature and description the title of which vests in the State of Louisiana, together with all islands arising therein and other lands formed by accretion or by reliction, where allowed by law, excepting tax adjudicated lands, and not presently under mineral lease on May 12, 2004, situated in Jefferson and Lafourche Parishes, Louisiana, and more particularly described as follows: Beginning at a point having Coordinates of X = 2,383,721.30 and Y = 298,543.18; thence West 5612.97 feet to a point having Coordinates of X = 2,378,108.33 and Y = 298,543.18; thence North 19 degrees 31 minutes 34 seconds West 1613.62 feet to a point having Coordinates of X = 2,377,569.00 and Y = 300,064.00; thence North 23 degrees 36 minutes 22 seconds East 617.34 feet to a point having Coordinates of X = 2,377,816.21 and Y = 300,629.68; thence Easterly and Southeasterly along Southern boundary of State Lease No. 2383, as amended, to a point having Coordinates of X = 2,383,425.68 and Y = 300,851.48; thence East 296.19 feet to a point having Coordinates of X = 2,383,721.30 and Y = 300,851.48; thence South 2308.30 feet to the point of beginning, **LESS AND EXCEPT**, if any, that portion of State Lease No. 2383, as amended, that may lie within the above described tract, containing approximately **268.16 acres**, all as more particularly outlined on a plat on file in the Office of Mineral Resources, Department of Natural Resources. All bearings, distances and coordinates are based on Louisiana Coordinate System of 1927, (North or South Zone), where applicable.

NOTE: The above description of the Tract nominated for lease has been provided and corrected, where required, exclusively by the nomination party. Any mineral lease selected from this Tract and awarded by the Louisiana State Mineral Board shall be without warranty of any kind, either express, implied, or statutory, including, but not limited to, the implied warranties of merchantability and fitness for a particular purpose. Should the mineral lease awarded by the Louisiana State Mineral Board be subsequently modified, cancelled or abrogated due to the existence of conflicting leases, operating agreements, private claims or other future obligations or conditions which may affect all or any portion of the leased Tract, it shall not relieve the Lessee of the obligation to pay any bonus due thereon to the Louisiana State Mineral Board, nor shall the Louisiana State Mineral Board be obligated to refund any consideration paid by the Lessor prior to such modification, cancellation, or abrogation, including, but not limited to, bonuses, rentals and royalties.

NOTE: The State of Louisiana does hereby reserve, and this lease shall be subject to, the imprescriptible right of surface use in the nature of a servitude in favor of the Department of Natural Resources, including its Offices and Commissions, for the sole purpose of implementing, constructing, servicing and maintaining approved coastal zone management and/or restoration projects. Utilization of any and all rights derived under this lease by the mineral lessee, its agents, successors or assigns, shall not interfere with nor hinder the reasonable surface use by the

Department of Natural Resources, its Offices or Commissions, as herein above reserved.

NOTE: The Department of Wildlife and Fisheries has designated certain areas in the coastal waters of the State of Louisiana as Oyster Seed Bed Areas. The exact location of those Seed Bed Areas must be obtained from the Department of Wildlife and Fisheries and any work done under a mineral lease from the State of Louisiana may necessarily be conducted in conformity with the rules and regulations promulgated by the said Department of Wildlife and Fisheries for Oyster Seed Bed Areas.

Applicant: Beta Land Service, LLC

Bidder	Cash Payment	Price/Acre	Rental	Oil	Gas	Other



JEFFERSON PARISH

T18S - R23E

S.L. 2383

P.O.B.
X=2,383,721.30
Y=298,543.18

S.L. 17780



LAFOURCHE PARISH

LITTLE LAKE

TRACT 36297 - Jefferson and Lafourche Parishes, Louisiana

All of the lands now or formerly constituting the beds and bottoms of all water bodies of every nature and description the title of which vests in the State of Louisiana, together with all islands arising therein and other lands formed by accretion or by reliction, where allowed by law, excepting tax adjudicated lands, and not presently under mineral lease on May 12, 2004, situated in Jefferson and Lafourche Parishes, Louisiana, and more particularly described as follows: Beginning at the Northwest corner of State Lease No. 17780 having Coordinates of X = 2,383,721.30 and Y = 298,543.18; thence South 04 degrees 44 minutes 00 seconds East 3,305.85 feet along the Western boundary of said State Lease No. 17780 to its Southwest corner having Coordinates of X = 2,383,994.10 and Y = 295,248.61; thence South 1,417.01 feet to a point having Coordinates of X = 2,383,994.10 and Y = 293,831.60; thence West 7,086.22 feet to a point having Coordinates of X = 2,376,907.88 and Y = 293,831.60; thence North 793.34 feet to a point having Coordinates of X = 2,376,907.88 and Y = 294,624.94; thence North 71 degrees 29 minutes 25 seconds East 2,441.41 feet to a point having Coordinates of X = 2,379,223.00 and Y = 295,400.00; thence North 19 degrees 31 minutes 34 seconds West 3,334.98 feet to a point having Coordinates of X = 2,378,108.33 and Y = 298,543.18; thence East 5,612.97 feet to the point of beginning, containing approximately **608.72 acres**, all as more particularly outlined on a plat on file in the Office of Mineral Resources, Department of Natural Resources. All bearings, distances and coordinates are based on Louisiana Coordinate System of 1927, (North or South Zone), where applicable.

NOTE: The above description of the Tract nominated for lease has been provided and corrected, where required, exclusively by the nomination party. Any mineral lease selected from this Tract and awarded by the Louisiana State Mineral Board shall be without warranty of any kind, either express, implied, or statutory, including, but not limited to, the implied warranties of merchantability and fitness for a particular purpose. Should the mineral lease awarded by the Louisiana State Mineral Board be subsequently modified, cancelled or abrogated due to the existence of conflicting leases, operating agreements, private claims or other future obligations or conditions which may affect all or any portion of the leased Tract, it shall not relieve the Lessee of the obligation to pay any bonus due thereon to the Louisiana State Mineral Board, nor shall the Louisiana State Mineral Board be obligated to refund any consideration paid by the Lessor prior to such modification, cancellation, or abrogation, including, but not limited to, bonuses, rentals and royalties.

NOTE: The State of Louisiana does hereby reserve, and this lease shall be subject to, the imprescriptible right of surface use in the nature of a servitude in favor of the Department of Natural Resources, including its Offices and Commissions, for the sole purpose of implementing, constructing, servicing and maintaining approved coastal zone management and/or restoration projects. Utilization of any and all rights derived under this lease by the mineral lessee, its agents, successors or assigns,

shall not interfere with nor hinder the reasonable surface use by the Department of Natural Resources, its Offices or Commissions, as herein above reserved.

NOTE: The Department of Wildlife and Fisheries has designated certain areas in the coastal waters of the State of Louisiana as Oyster Seed Bed Areas. The exact location of those Seed Bed Areas must be obtained from the Department of Wildlife and Fisheries and any work done under a mineral lease from the State of Louisiana may necessarily be conducted in conformity with the rules and regulations promulgated by the said Department of Wildlife and Fisheries for Oyster Seed Bed Areas.

Applicant: Beta Land Service, LLC

Bidder	Cash Payment	Price/Acre	Rental	Oil	Gas	Other



LITTLE LAKE

JEFFERSON PARISH

LAFOURCHE PARISH

P.O.B.
X=2,383,721.30
Y=298,543.18

SL 2383

SL 17780

SL 7501

