

TRACT 36278 - Portion of Block 29, Breton Sound Area, Plaquemines Parish, Louisiana

All of the lands now or formerly constituting the beds and bottoms of all water bodies of every nature and description the title of which vests in the State of Louisiana, together with all islands arising therein and other lands formed by accretion or by reliction, where allowed by law, excepting tax adjudicated lands, and not presently under mineral lease on May 12, 2004, situated in Plaquemines Parish, Louisiana, and more particularly described as follows: Beginning at the Northwest corner of Block 29, Breton Sound Area having Coordinates of X = 2,679,600.00 and Y = 337,080.00; thence East 7,375.00 feet on the North line of said Block 29 to the most Northerly Northwest corner of State Lease No. 2000, as amended having Coordinates of X = 2,686,975.00 and Y = 337,080.00; thence along the boundary of said State Lease No. 2000 the following courses: South 7,375.00 feet, West 4,375.00 feet, South 3,000.00 feet, and West 3,000.00 feet to its Westernmost Northwest corner and a point on the West line of said Block 29 having Coordinates of X = 2,679,600.00 and Y = 326,705.00; thence North 10,375.00 feet on the West line of said Block 20 to the point of beginning, containing approximately **1,455.25 acres**, all as more particularly outlined on a plat on file in the Office of Mineral Resources, Department of Natural Resources. All bearings, distances and coordinates are based on Louisiana Coordinate System of 1927, (North or South Zone), where applicable.

NOTE: The above description of the Tract nominated for lease has been provided and corrected, where required, exclusively by the nomination party. Any mineral lease selected from this Tract and awarded by the Louisiana State Mineral Board shall be without warranty of any kind, either express, implied, or statutory, including, but not limited to, the implied warranties of merchantability and fitness for a particular purpose. Should the mineral lease awarded by the Louisiana State Mineral Board be subsequently modified, cancelled or abrogated due to the existence of conflicting leases, operating agreements, private claims or other future obligations or conditions which may affect all or any portion of the leased Tract, it shall not relieve the Lessee of the obligation to pay any bonus due thereon to the Louisiana State Mineral Board, nor shall the Louisiana State Mineral Board be obligated to refund any consideration paid by the Lessor prior to such modification, cancellation, or abrogation, including, but not limited to, bonuses, rentals and royalties.

NOTE: The State of Louisiana does hereby reserve, and this lease shall be subject to, the imprescriptible right of surface use in the nature of a servitude in favor of the Department of Natural Resources, including its Offices and Commissions, for the sole purpose of implementing, constructing, servicing and maintaining approved coastal zone management and/or restoration projects. Utilization of any and all rights derived under this lease by the mineral lessee, its agents, successors or assigns, shall not interfere with nor hinder the reasonable surface use by the

Department of Natural Resources, its Offices or Commissions, as herein above reserved.

NOTE: It appears, according to our records, that a portion of this Tract is located within the restrictive safety fairway area as set out by the Corps of Engineers, U.S. Army and/or the restrictive anchorage area as set out by the U.S. Coast Guard.

Applicant: Angelle & Donohue Oil & Gas Properties, Inc.

Bidder	Cash Payment	Price/Acre	Rental	Oil	Gas	Other



SL 1997

SL 2000

BLOCK BS0020

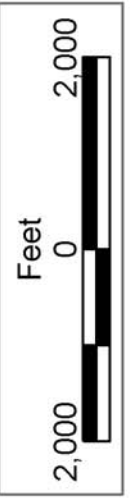
BRETON SOUND AREA

BLOCK BS0029

PLAQUEMINES PARISH

P.O.B.
X=2,679,600.00
Y=337,080.00

BLOCK BS0030



TRACT 36279 - Portion of Blocks 28, and 37, Breton Sound Area, Plaquemines Parish, Louisiana

All of the lands now or formerly constituting the beds and bottoms of all water bodies of every nature and description the title of which vests in the State of Louisiana, together with all islands arising therein and other lands formed by accretion or by reliction, where allowed by law, excepting tax adjudicated lands, and not presently under mineral lease on May 12, 2004, situated in Plaquemines Parish, Louisiana, and more particularly described as follows: Beginning at a point on the East line of Block 28, Breton Sound Area and the most Easterly Southeast corner of State Lease No. 1999, as amended having Coordinates of X = 2,709,100.00 and Y = 327,530.00; thence South 5,200.00 feet along the East line of said Block 28 to its Southeast corner and the Northeast corner of Block 37, Breton Sound Area having Coordinates of X = 2,709,100.00 and Y = 322,330.00; thence South 6,774.41 feet along the East line of said Block 37 to a point having Coordinates of X = 2,709,100.00 and Y = 315,555.59; thence Southwesterly on a straight line to a point on the West line of said Block 37 having Coordinates of X = 2,694,350.00 and Y = 310,492.12; thence North 3,757.88 feet along the West line of said Block 37 to the Southwest corner of State Lease No. 4409, as amended having Coordinates of X = 2,694,350.00 and Y = 314,250.00; thence along the boundary of said State Lease No. 4409 the following courses: East 10,230.00 feet, North 4,020.00 feet, West 1,940.00 feet and North 4,060.00 feet to the Northeast corner of said State Lease No. 4409, also being a point on the North line of said Block 37, a point on the South line of said Block 28 and the most Southerly Southeast corner of said State Lease No. 1999 having Coordinates of X = 2,702,640.00 and Y = 322,330.00; thence along the boundary of said State Lease No. 1999 the following courses: North 5,200.00 feet and East 6,460.00 feet to the point of beginning, containing approximately **2,205.59 acres**, all as more particularly outlined on a plat on file in the Office of Mineral Resources, Department of Natural Resources. All bearings, distances and coordinates are based on Louisiana Coordinate System of 1927, (North or South Zone), where applicable.

NOTE: The above description of the Tract nominated for lease has been provided and corrected, where required, exclusively by the nomination party. Any mineral lease selected from this Tract and awarded by the Louisiana State Mineral Board shall be without warranty of any kind, either express, implied, or statutory, including, but not limited to, the implied warranties of merchantability and fitness for a particular purpose. Should the mineral lease awarded by the Louisiana State Mineral Board be subsequently modified, cancelled or abrogated due to the existence of conflicting leases, operating agreements, private claims or other future obligations or conditions which may affect all or any portion of the leased Tract, it shall not relieve the Lessee of the obligation to pay any bonus due thereon to the Louisiana State Mineral Board, nor shall the Louisiana State Mineral Board be obligated to refund any consideration paid by the Lessor prior to such modification, cancellation, or abrogation, including, but not limited to, bonuses, rentals and royalties.

NOTE: The State of Louisiana does hereby reserve, and this lease shall be subject to, the imprescriptible right of surface use in the nature of a servitude in favor of the Department of Natural Resources, including its Offices and Commissions, for the sole purpose of implementing, constructing, servicing and maintaining approved coastal zone management and/or restoration projects. Utilization of any and all rights derived under this lease by the mineral lessee, its agents, successors or assigns, shall not interfere with nor hinder the reasonable surface use by the Department of Natural Resources, its Offices or Commissions, as herein above reserved.

NOTE: It appears, according to our records, that a portion of this Tract is located within the restrictive safety fairway area as set out by the Corps of Engineers, U.S. Army and/or the restrictive anchorage area as set out by the U.S. Coast Guard.

Applicant: Angelle & Donohue Oil & Gas Properties, Inc.

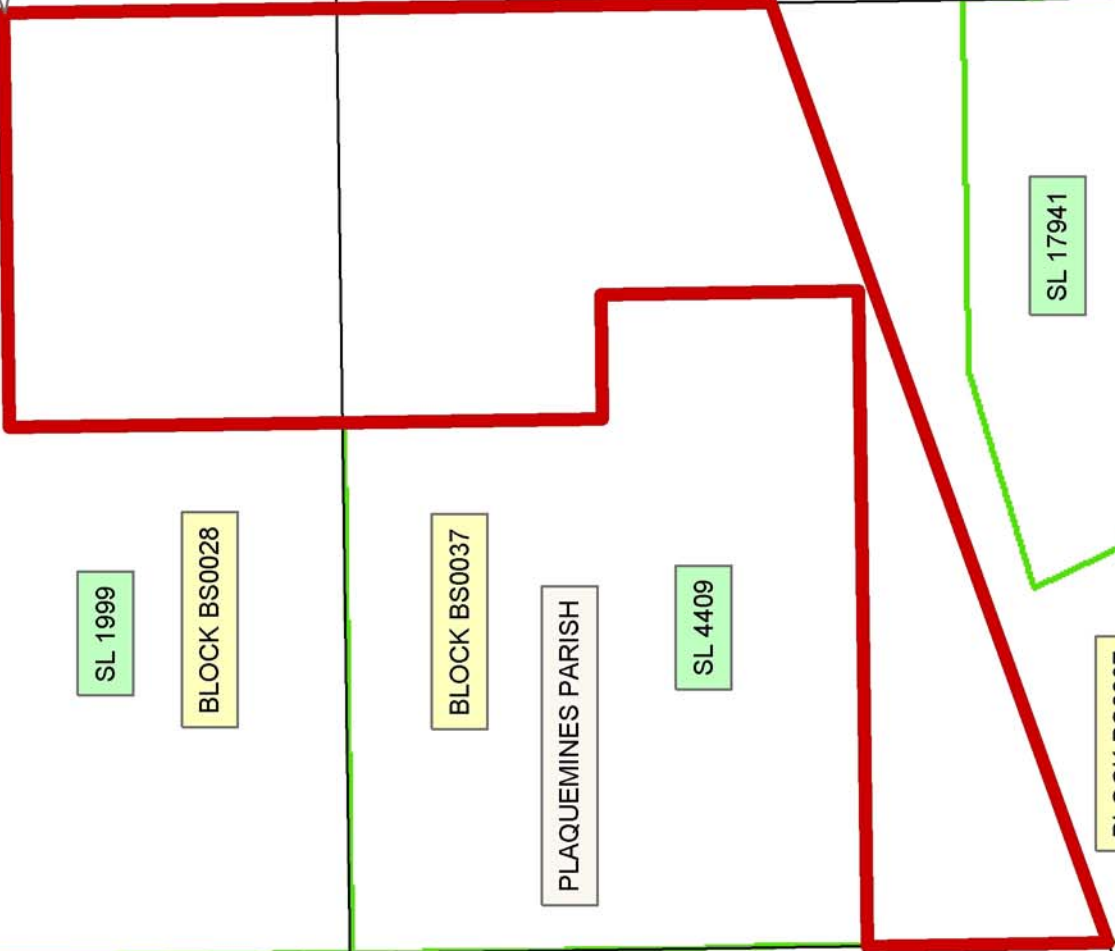
Bidder	Cash Payment	Price/Acre	Rental	Oil	Gas	Other



SL 4574

P.O.B.
X=2,709,100.00
Y=327,530.00

BLOCK BS0038



SL 17941

SL 1999
BLOCK BS0028

BLOCK BS0037

PLAQUEMINES PARISH

SL 4409

BLOCK BS0037

SL 2000

SL 1230

BLOCK BS0036

TRACT 36280 - Iberia Parish, Louisiana

All of the lands now or formerly constituting the beds and bottoms of all water bodies of every nature and description the title of which vests in the State of Louisiana, together with all islands arising therein and other lands formed by accretion or by reliction, where allowed by law, excepting tax adjudicated lands, and not presently under mineral lease on May 12, 2004, situated in Iberia Parish, Louisiana, and more particularly described as follows: Beginning at a point having Coordinates of X = 1,888,594.50 and Y = 326,534.85; thence West 3,250.60 feet to a point having Coordinates of X = 1,885,343.90 and Y = 326,534.85; thence North 3,458.33 feet to a point having Coordinates of X = 1,885,343.90 and Y = 329,993.18; thence East 1,356.07 feet to a point having Coordinates of X = 1,886,699.98 and Y = 329,993.18; thence North 2,226.84 feet to a point having Coordinates of X = 1,886,699.98 and Y = 332,220.02; thence North 39 degrees 14 minutes 55 seconds East 925.74 feet to a point having Coordinates of X = 1,887,285.68 and Y = 332,936.92; thence South 89 degrees 45 minutes 52 seconds East 1,308.83 feet to a point having Coordinates of X = 1,888,594.50 and Y = 332,931.54; thence South 6,396.69 feet to the point of beginning, **LESS AND EXCEPT** that portion, if any, of State Lease No. 1735 and State Lease No. 2276, as amended, that may lie within the above described tract, containing approximately **381.20 acres**, all as more particularly outlined on a plat on file in the Office of Mineral Resources, Department of Natural Resources. All bearings, distances and coordinates are based on Louisiana Coordinate System of 1927, (North or South Zone), where applicable.

NOTE: The above description of the Tract nominated for lease has been provided and corrected, where required, exclusively by the nomination party. Any mineral lease selected from this Tract and awarded by the Louisiana State Mineral Board shall be without warranty of any kind, either express, implied, or statutory, including, but not limited to, the implied warranties of merchantability and fitness for a particular purpose. Should the mineral lease awarded by the Louisiana State Mineral Board be subsequently modified, cancelled or abrogated due to the existence of conflicting leases, operating agreements, private claims or other future obligations or conditions which may affect all or any portion of the leased Tract, it shall not relieve the Lessee of the obligation to pay any bonus due thereon to the Louisiana State Mineral Board, nor shall the Louisiana State Mineral Board be obligated to refund any consideration paid by the Lessor prior to such modification, cancellation, or abrogation, including, but not limited to, bonuses, rentals and royalties.

NOTE: The State of Louisiana does hereby reserve, and this lease shall be subject to, the imprescriptible right of surface use in the nature of a servitude in favor of the Department of Natural Resources, including its Offices and Commissions, for the sole purpose of implementing, constructing, servicing and maintaining approved coastal zone management and/or restoration projects. Utilization of any and all rights derived under this lease by the mineral lessee, its agents, successors or assigns,

shall not interfere with nor hinder the reasonable surface use by the Department of Natural Resources, its Offices or Commissions, as herein above reserved.

NOTE: The Department of Wildlife and Fisheries has designated certain areas in the coastal waters of the State of Louisiana as Oyster Seed Bed Areas. The exact location of those Seed Bed Areas must be obtained from the Department of Wildlife and Fisheries and any work done under a mineral lease from the State of Louisiana may necessarily be conducted in conformity with the rules and regulations promulgated by the said Department of Wildlife and Fisheries for Oyster Seed Bed Areas.

NOTE: All or a portion of this Tract lies within one nautical mile of the boundary of the Russell Sage or Marsh Island Wildlife Refuge and Game Preserve. Any activities connected with this lease conducted within this Tract which may pose potential environmental impacts to the said Wildlife Refuge and Game Preserve should be coordinated with the Louisiana Department of Wildlife and Fisheries.

Applicant: S.R. Verret

Bidder	Cash Payment	Price/Acre	Rental	Oil	Gas	Other



IBERIA PARISH

S.L. 1735

S.L. 2276

EAST COTE BLANCHE BAY

P.O.B.
X=1,888,594.50
Y=326,534.85



TRACT 36281 - Portion of Block 35, Breton Sound Area, Plaquemines Parish, Louisiana

All of the lands now or formerly constituting the beds and bottoms of all water bodies of every nature and description the title of which vests in the State of Louisiana, together with all islands arising therein and other lands formed by accretion or by reliction, where allowed by law, excepting tax adjudicated lands, and not presently under mineral lease on May 12, 2004, situated in Plaquemines Parish, Louisiana, and more particularly described as follows: Beginning at a point on the South line of Block 35, Breton Sound Area, having Coordinates of X = 2,675,912.50 and Y = 307,580.00; thence West 6,826.44 feet along the South line of said Block 35 to the Southeast corner of State Lease No. 17964 having Coordinates of X = 2,669,086.06 and Y = 307,580.00; thence along the boundary of said State Lease No. 17964 the following courses: North 3,048.68 feet and West 236.66 feet to a point on the North line of said State Lease No. 17964 having Coordinates of X = 2,668,849.40 and Y = 310,628.68; thence North 1,826.32 feet to the most Southerly Southeast corner of State Lease No. 14561 having Coordinates of X = 2,668,849.40 and Y = 312,455.00; thence along the boundary of said State Lease No. 14561 the following courses: North 2,500.00 feet, East 3,250.60 feet, North 6,055.00 feet, West 2,160.00 feet and North 1,320.00 feet to the most Northerly Northeast corner of said State Lease No. 14561 to a point on the North line of said Block 35 having Coordinates of X = 2,669,940.00 and Y = 322,330.00; thence East 5,972.50 feet along the North line of said Block 35 to a point having Coordinates of X = 2,675,912.50 and Y = 322,330.00; thence South 14,750.00 feet to the point of beginning, containing approximately **1,890.20 acres**, all as more particularly outlined on a plat on file in the Office of Mineral Resources, Department of Natural Resources. All bearings, distances and coordinates are based on Louisiana Coordinate System of 1927, (North or South Zone), where applicable.

NOTE: The above description of the Tract nominated for lease has been provided and corrected, where required, exclusively by the nomination party. Any mineral lease selected from this Tract and awarded by the Louisiana State Mineral Board shall be without warranty of any kind, either express, implied, or statutory, including, but not limited to, the implied warranties of merchantability and fitness for a particular purpose. Should the mineral lease awarded by the Louisiana State Mineral Board be subsequently modified, cancelled or abrogated due to the existence of conflicting leases, operating agreements, private claims or other future obligations or conditions which may affect all or any portion of the leased Tract, it shall not relieve the Lessee of the obligation to pay any bonus due thereon to the Louisiana State Mineral Board, nor shall the Louisiana State Mineral Board be obligated to refund any consideration paid by the Lessor prior to such modification, cancellation, or abrogation, including, but not limited to, bonuses, rentals and royalties.

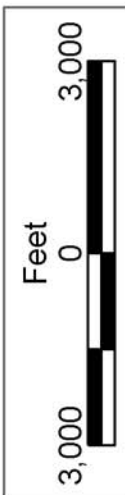
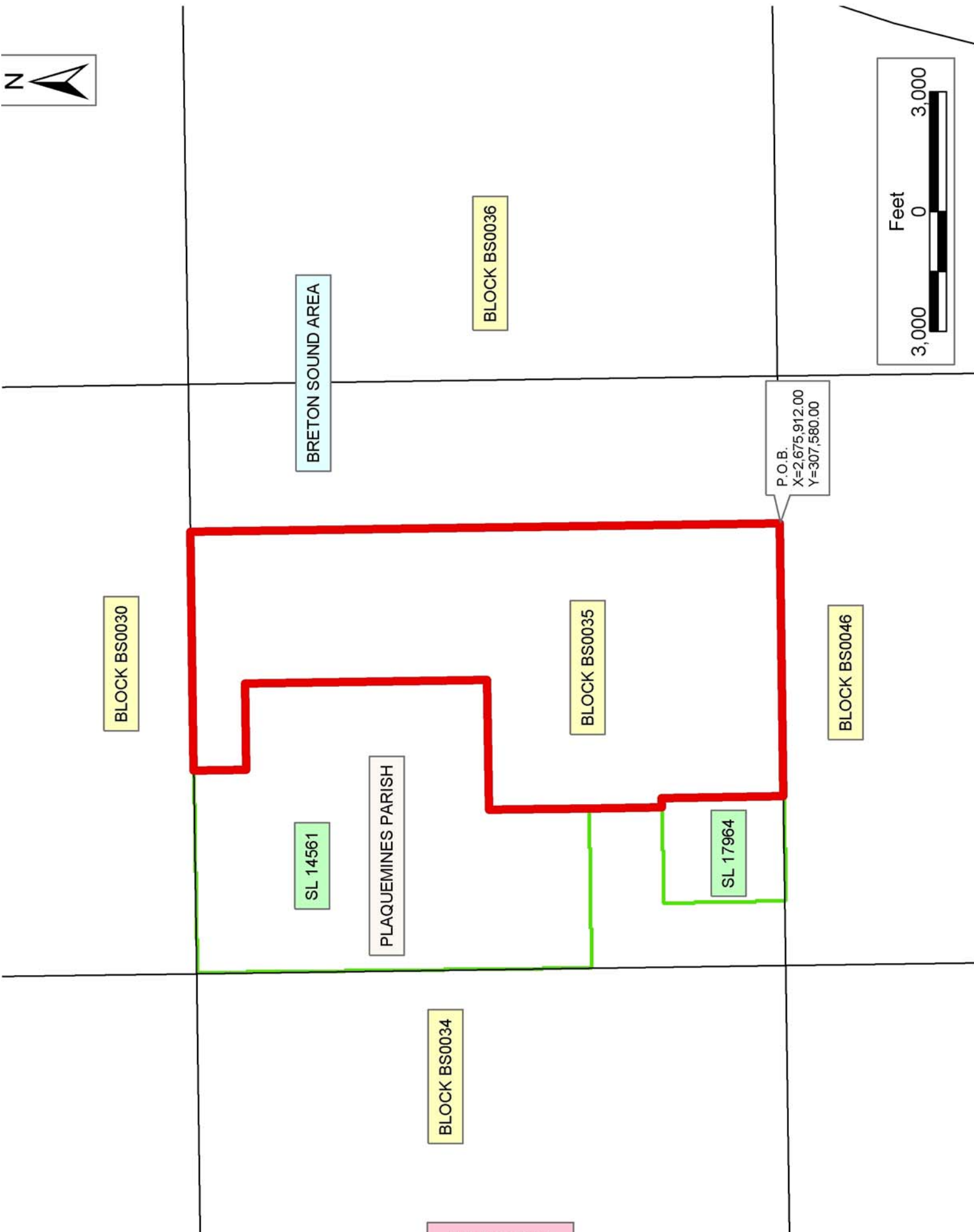
NOTE: The State of Louisiana does hereby reserve, and this lease shall be subject to, the imprescriptible right of surface use in the nature of a

servitude in favor of the Department of Natural Resources, including its Offices and Commissions, for the sole purpose of implementing, constructing, servicing and maintaining approved coastal zone management and/or restoration projects. Utilization of any and all rights derived under this lease by the mineral lessee, its agents, successors or assigns, shall not interfere with nor hinder the reasonable surface use by the Department of Natural Resources, its Offices or Commissions, as herein above reserved.

NOTE: It appears, according to our records, that a portion of this Tract is located within the restrictive safety fairway area as set out by the Corps of Engineers, U.S. Army and/or the restrictive anchorage area as set out by the U.S. Coast Guard.

Applicant: Angelle & Donohue Oil & Gas Properties, Inc.

Bidder	Cash Payment	Price/Acre	Rental	Oil	Gas	Other



TRACT 36282 - Portion of Blocks 35, and 36, Breton Sound Area, Plaquemines Parish, Louisiana

All of the lands now or formerly constituting the beds and bottoms of all water bodies of every nature and description the title of which vests in the State of Louisiana, together with all islands arising therein and other lands formed by accretion or by reliction, where allowed by law, excepting tax adjudicated lands, and not presently under mineral lease on May 12, 2004, situated in Plaquemines Parish, Louisiana, and more particularly described as follows: Beginning at a point on the South line of Block 35, Breton Sound Area, having Coordinates of X = 2,675,912.50 and Y = 307,580.00; thence North 14,750.00 feet to a point on the North line of said Block 35 having Coordinates of X = 2,675,912.50 and Y = 322,330.00; thence East 3,687.50 feet along the North line of said Block 35 to its Northeast corner also being the Northwest corner of Block 36, Breton Sound Area and the Northwest corner of State Lease No. 1230, as amended having Coordinates of X = 2,679,600.00 and Y = 322,330.00; thence along the boundary of said State Lease No. 1230 the following courses: South 5,050.00 feet and East 5,400.00 feet to a point on the boundary of said State Lease No. 1230 and the Northwest corner of State Lease No. 17690 having Coordinates of X = 2,685,000.00 and Y = 317,280.00; thence along the boundary of said State Lease No. 17690 the following courses: South 2,500.00 feet and East 1,184.75 feet to the Southeast corner of said State Lease No. 17690 and a point on the Western boundary of said State Lease No. 1230 having Coordinates of X = 2,686,184.75 and Y = 314,780.00; thence along the boundary of said State Lease No. 1230 the following courses: South 37 degrees 20 minutes 00 seconds West 5,911.04 feet and South 21 degrees 48 minutes 05 seconds West 2,692.58 feet to the Southwest corner of said State Lease No. 1230 and a point on the South line of said Block 36 having Coordinates of X = 2,681,600.00 and Y = 307,580.00; thence West 2,000.00 feet along the South line of said Block 36 to its Southwest corner and the Southeast corner of said Block 35 having Coordinates of X = 2,679,600.00 and Y = 307,580.00; thence West 3,687.50 feet along the South line of said Block 35 to the point of beginning, containing approximately **2,219.12 acres**, all as more particularly outlined on a plat on file in the Office of Mineral Resources, Department of Natural Resources. All bearings, distances and coordinates are based on Louisiana Coordinate System of 1927, (North or South Zone), where applicable.

NOTE: The above description of the Tract nominated for lease has been provided and corrected, where required, exclusively by the nomination party. Any mineral lease selected from this Tract and awarded by the Louisiana State Mineral Board shall be without warranty of any kind, either express, implied, or statutory, including, but not limited to, the implied warranties of merchantability and fitness for a particular purpose. Should the mineral lease awarded by the Louisiana State Mineral Board be subsequently modified, cancelled or abrogated due to the existence of conflicting leases, operating agreements, private claims or other future obligations or conditions which may affect all or any portion of the leased Tract, it shall not relieve the Lessee of the obligation to

pay any bonus due thereon to the Louisiana State Mineral Board, nor shall the Louisiana State Mineral Board be obligated to refund any consideration paid by the Lessor prior to such modification, cancellation, or abrogation, including, but not limited to, bonuses, rentals and royalties.

NOTE: The State of Louisiana does hereby reserve, and this lease shall be subject to, the imprescriptible right of surface use in the nature of a servitude in favor of the Department of Natural Resources, including its Offices and Commissions, for the sole purpose of implementing, constructing, servicing and maintaining approved coastal zone management and/or restoration projects. Utilization of any and all rights derived under this lease by the mineral lessee, its agents, successors or assigns, shall not interfere with nor hinder the reasonable surface use by the Department of Natural Resources, its Offices or Commissions, as herein above reserved.

NOTE: It appears, according to our records, that a portion of this Tract is located within the restrictive safety fairway area as set out by the Corps of Engineers, U.S. Army and/or the restrictive anchorage area as set out by the U.S. Coast Guard.

Applicant: Angelle & Donohue Oil & Gas Properties, Inc.

Bidder	Cash Payment	Price/Acre	Rental	Oil	Gas	Other



BRETON SOUND AREA

PLAQUEMINES PARISH

BLOCK BS0036

BLOCK BS0035

SL 2000

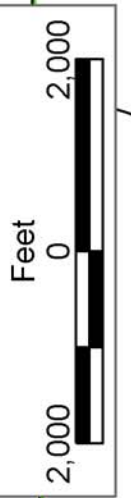
SL 1230

SL 17690

SL 1237

SL 14561

P.O.B.
X=2,675,912.50
Y=307,580.00



TRACT 36283 - Iberia Parish, Louisiana

All of the lands now or formerly constituting the beds and bottoms of all water bodies of every nature and description the title of which vests in the State of Louisiana, together with all islands arising therein and other lands formed by accretion or by reliction, where allowed by law, excepting tax adjudicated lands, and not presently under mineral lease on May 12, 2004, situated in Iberia Parish, Louisiana, and more particularly described as follows: Beginning at a point having Coordinates of X = 1,888,594.50 and Y = 326,534.85; thence South 3,000.00 feet to a point having Coordinates of X = 1,888,594.50 and Y = 323,534.85; thence West 6,566.88 feet to a point having Coordinates of X = 1,882,027.61 and Y = 323,534.85; thence North 00 degrees 14 minutes 08 seconds East 3,013.61 feet to a point having Coordinates of X = 1,882,040.00 and Y = 326,548.43; thence South 89 degrees 45 minutes 52 seconds East 3,303.93 feet to a point having Coordinates of X = 1,885,343.90 and Y = 326,534.85; thence East 3,250.60 feet to the point of beginning, **LESS AND EXCEPT** that portion, if any, of State Lease No. 2276, as amended, and State Lease No. 3317, as amended, that may lie within the above described tract, containing approximately **452.36 acres**, all as more particularly outlined on a plat on file in the Office of Mineral Resources, Department of Natural Resources. All bearings, distances and coordinates are based on Louisiana Coordinate System of 1927, (North or South Zone), where applicable.

NOTE: The above description of the Tract nominated for lease has been provided and corrected, where required, exclusively by the nomination party. Any mineral lease selected from this Tract and awarded by the Louisiana State Mineral Board shall be without warranty of any kind, either express, implied, or statutory, including, but not limited to, the implied warranties of merchantability and fitness for a particular purpose. Should the mineral lease awarded by the Louisiana State Mineral Board be subsequently modified, cancelled or abrogated due to the existence of conflicting leases, operating agreements, private claims or other future obligations or conditions which may affect all or any portion of the leased Tract, it shall not relieve the Lessee of the obligation to pay any bonus due thereon to the Louisiana State Mineral Board, nor shall the Louisiana State Mineral Board be obligated to refund any consideration paid by the Lessor prior to such modification, cancellation, or abrogation, including, but not limited to, bonuses, rentals and royalties.

NOTE: The above described tract may be in the vicinity of existing shell reefs where drilling and dredging operations must be conducted in strict conformity with the regulations adopted by the Louisiana Department of Wildlife and Fisheries and/or the U.S. Corps of Engineers, U.S. Army.

NOTE: The State of Louisiana does hereby reserve, and this lease shall be subject to, the imprescriptible right of surface use in the nature of a servitude in favor of the Department of Natural Resources, including its Offices and Commissions, for the sole purpose of implementing,

constructing, servicing and maintaining approved coastal zone management and/or restoration projects. Utilization of any and all rights derived under this lease by the mineral lessee, its agents, successors or assigns, shall not interfere with nor hinder the reasonable surface use by the Department of Natural Resources, its Offices or Commissions, as herein above reserved.

NOTE: The Department of Wildlife and Fisheries has designated certain areas in the coastal waters of the State of Louisiana as Oyster Seed Bed Areas. The exact location of those Seed Bed Areas must be obtained from the Department of Wildlife and Fisheries and any work done under a mineral lease from the State of Louisiana may necessarily be conducted in conformity with the rules and regulations promulgated by the said Department of Wildlife and Fisheries for Oyster Seed Bed Areas.

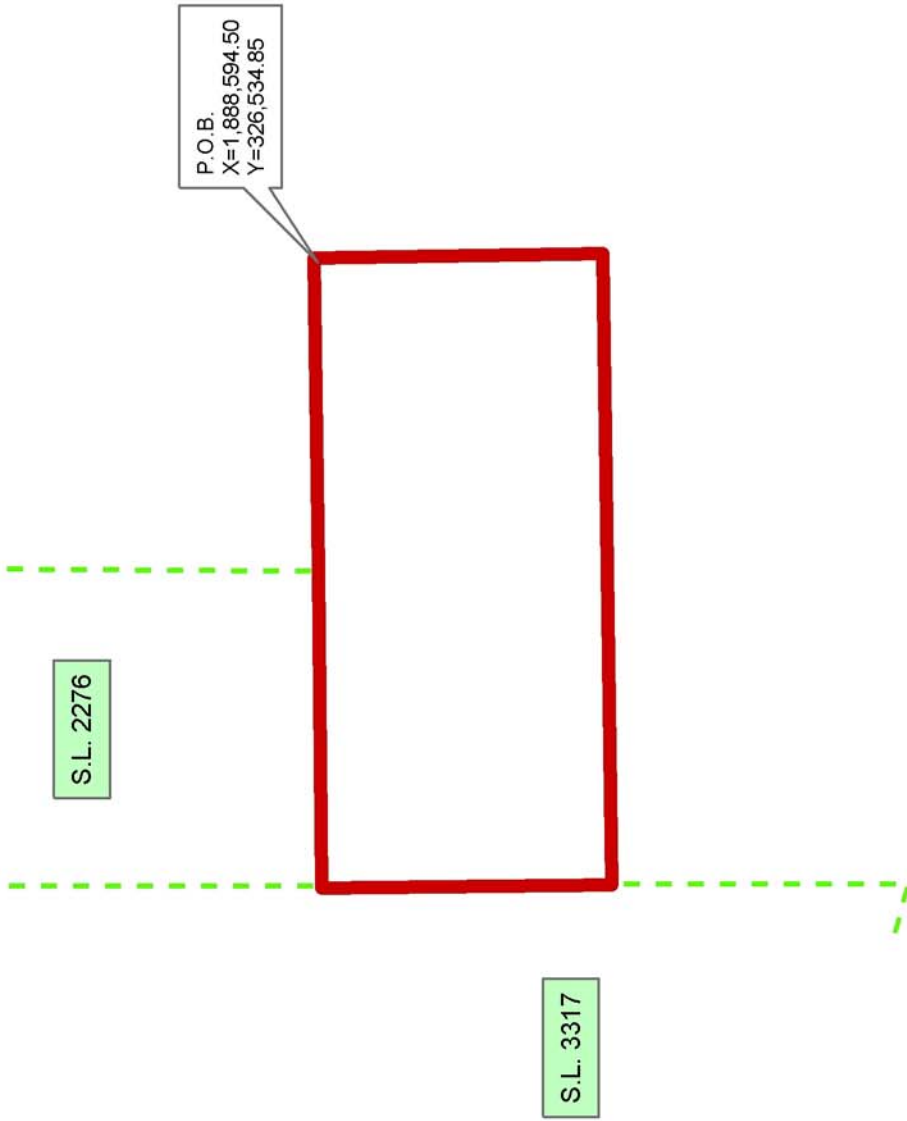
NOTE: All or a portion of this Tract lies within one nautical mile of the boundary of the Russell Sage or Marsh Island Wildlife Refuge and Game Preserve. Any activities connected with this lease conducted within this Tract which may pose potential environmental impacts to the said Wildlife Refuge and Game Preserve should be coordinated with the Louisiana Department of Wildlife and Fisheries.

Applicant: S.R. Verret

Bidder	Cash Payment	Price/Acre	Rental	Oil	Gas	Other



IBERIA PARISH



EAST COTE BLANCHE BAY



TRACT 36284 - Iberia Parish, Louisiana

All of the lands now or formerly constituting the beds and bottoms of all water bodies of every nature and description the title of which vests in the State of Louisiana, together with all islands arising therein and other lands formed by accretion or by reliction, where allowed by law, excepting tax adjudicated lands, and not presently under mineral lease on May 12, 2004, situated in Iberia Parish, Louisiana, and more particularly described as follows: Beginning at a point having Coordinates of X = 1,882,015.91 and Y = 320,534.85; thence North 153.08 feet to a point having Coordinates of X = 1,882,015.91 and Y = 320,687.93; thence North 00 degrees 14 minutes 08 seconds East 2,846.95 feet to a point having Coordinates of X = 1,882,027.61 and Y = 323,534.85; thence East 6,566.88 feet to a point having Coordinates of X = 1,888,594.50 and Y = 323,534.85; thence South 3,000.00 feet to a point having Coordinates of X = 1,888,594.50 and Y = 320,534.85; thence West 6,578.59 feet to the point of beginning, **LESS AND EXCEPT** that portion, if any, of State Lease No. 3317, as amended, that may lie within the above described tract, containing approximately **452.69 acres**, all as more particularly outlined on a plat on file in the Office of Mineral Resources, Department of Natural Resources. All bearings, distances and coordinates are based on Louisiana Coordinate System of 1927, (North or South Zone), where applicable.

NOTE: The above description of the Tract nominated for lease has been provided and corrected, where required, exclusively by the nomination party. Any mineral lease selected from this Tract and awarded by the Louisiana State Mineral Board shall be without warranty of any kind, either express, implied, or statutory, including, but not limited to, the implied warranties of merchantability and fitness for a particular purpose. Should the mineral lease awarded by the Louisiana State Mineral Board be subsequently modified, cancelled or abrogated due to the existence of conflicting leases, operating agreements, private claims or other future obligations or conditions which may affect all or any portion of the leased Tract, it shall not relieve the Lessee of the obligation to pay any bonus due thereon to the Louisiana State Mineral Board, nor shall the Louisiana State Mineral Board be obligated to refund any consideration paid by the Lessor prior to such modification, cancellation, or abrogation, including, but not limited to, bonuses, rentals and royalties.

NOTE: The above described tract may be in the vicinity of existing shell reefs where drilling and dredging operations must be conducted in strict conformity with the regulations adopted by the Louisiana Department of Wildlife and Fisheries and/or the U.S. Corps of Engineers, U.S. Army.

NOTE: The State of Louisiana does hereby reserve, and this lease shall be subject to, the imprescriptible right of surface use in the nature of a servitude in favor of the Department of Natural Resources, including its Offices and Commissions, for the sole purpose of implementing, constructing, servicing and maintaining approved coastal zone management and/or restoration projects. Utilization of any and all rights derived

under this lease by the mineral lessee, its agents, successors or assigns, shall not interfere with nor hinder the reasonable surface use by the Department of Natural Resources, its Offices or Commissions, as herein above reserved.

NOTE: The Department of Wildlife and Fisheries has designated certain areas in the coastal waters of the State of Louisiana as Oyster Seed Bed Areas. The exact location of those Seed Bed Areas must be obtained from the Department of Wildlife and Fisheries and any work done under a mineral lease from the State of Louisiana may necessarily be conducted in conformity with the rules and regulations promulgated by the said Department of Wildlife and Fisheries for Oyster Seed Bed Areas.

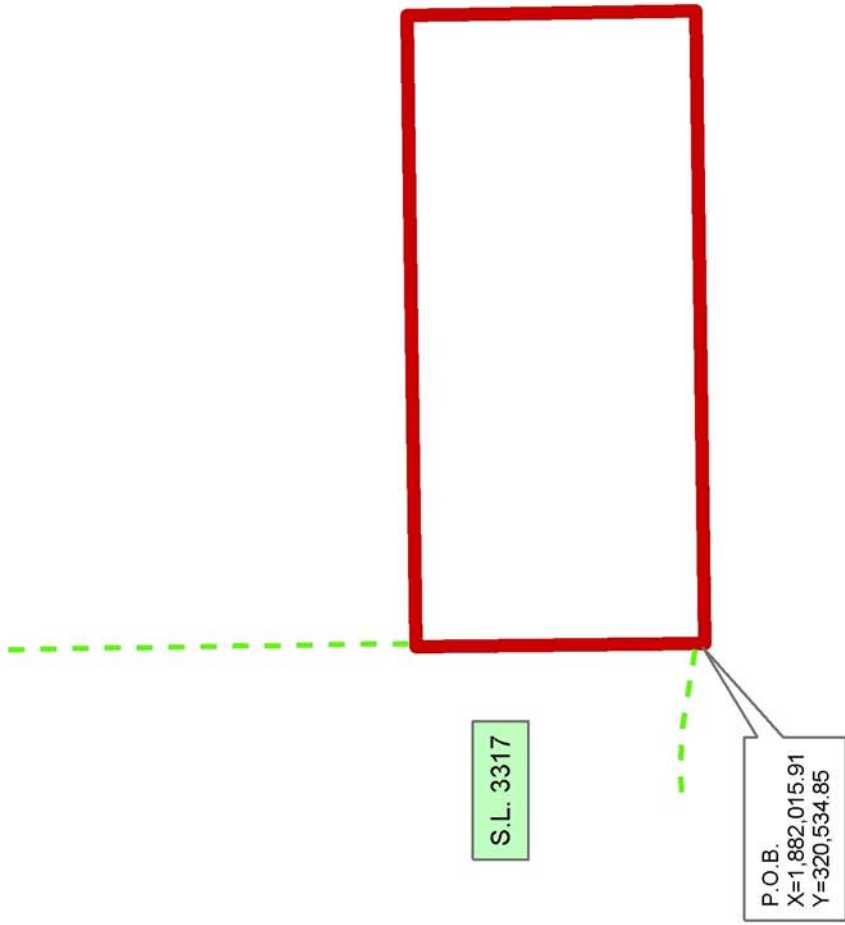
NOTE: All or a portion of this Tract lies within one nautical mile of the boundary of the Russell Sage or Marsh Island Wildlife Refuge and Game Preserve. Any activities connected with this lease conducted within this Tract which may pose potential environmental impacts to the said Wildlife Refuge and Game Preserve should be coordinated with the Louisiana Department of Wildlife and Fisheries.

Applicant: S.R. Verret

Bidder	Cash Payment	Price/Acre	Rental	Oil	Gas	Other



IBERIA PARISH



S.L. 3317

P.O.B.
X=1,882,015.91
Y=320,534.85

EAST COTE BLANCHE BAY



TRACT 36285 - Iberia Parish, Louisiana

All of the lands now or formerly constituting the beds and bottoms of all water bodies of every nature and description the title of which vests in the State of Louisiana, together with all islands arising therein and other lands formed by accretion or by reliction, where allowed by law, excepting tax adjudicated lands, and not presently under mineral lease on May 12, 2004, situated in Iberia Parish, Louisiana, and more particularly described as follows: Beginning at a point having Coordinates of X = 1,882,015.91 and Y = 320,534.85; thence West 5,728.69 feet to a point on the Eastern boundary of the Russell Sage Foundation Marsh Island Wildlife Management Area and Game Preserve having Coordinates of X = 1,876,287.22 and Y = 320,534.85; thence Northeasterly along the meanders of the said Eastern boundary of the Russell Sage Foundation Marsh Island Wildlife Management Area and Game Preserve to a point having Coordinates of X = 1,878,637.48 and Y = 322,291.74; thence South 18 degrees 03 minutes 38 seconds East 201.67 feet to a point having Coordinates of X = 1,878,700.00 and Y = 322,100.01; thence South 12 degrees 59 minutes 41 seconds East 1,200.75 feet to a point having Coordinates of X = 1,878,970.00 and Y = 320,930.01; thence North 82 degrees 05 minutes 34 seconds East 363.46 feet to a point having Coordinates of X = 1,879,330.00 and Y = 320,980.01; thence North 87 degrees 16 minutes 25 seconds East 420.48 feet to a point having Coordinates of X = 1,879,750.01 and Y = 321,000.01; thence East 550.00 feet to a point having Coordinates of X = 1,880,300.01 and Y = 321,000.01; thence South 82 degrees 05 minutes 34 seconds East 726.91 feet to a point having Coordinates of X = 1,881,020.01 and Y = 320,900.01; thence South 78 degrees 50 minutes 06 seconds East 774.66 feet to a point having Coordinates of X = 1,881,780.01 and Y = 320,750.01; thence South 75 degrees 15 minutes 23 seconds East 243.94 feet to a point having Coordinates of X = 1,882,015.91 and Y = 320,687.93; thence South 153.08 feet to the point of beginning, **LESS AND EXCEPT** that portion, if any, of State Lease No. 3317, as amended, and State Lease No. 3498, as amended, that may lie within the above described tract, containing approximately **85 acres**, all as more particularly outlined on a plat on file in the Office of Mineral Resources, Department of Natural Resources. All bearings, distances and coordinates are based on Louisiana Coordinate System of 1927, (North or South Zone), where applicable.

NOTE: The above description of the Tract nominated for lease has been provided and corrected, where required, exclusively by the nomination party. Any mineral lease selected from this Tract and awarded by the Louisiana State Mineral Board shall be without warranty of any kind, either express, implied, or statutory, including, but not limited to, the implied warranties of merchantability and fitness for a particular purpose. Should the mineral lease awarded by the Louisiana State Mineral Board be subsequently modified, cancelled or abrogated due to the existence of conflicting leases, operating agreements, private claims or other future obligations or conditions which may affect all or any portion of the leased Tract, it shall not relieve the Lessee of the obligation to pay any bonus due thereon to the Louisiana State Mineral Board, nor shall

the Louisiana State Mineral Board be obligated to refund any consideration paid by the Lessor prior to such modification, cancellation, or abrogation, including, but not limited to, bonuses, rentals and royalties.

NOTE: The above described tract may be in the vicinity of existing shell reefs where drilling and dredging operations must be conducted in strict conformity with the regulations adopted by the Louisiana Department of Wildlife and Fisheries and/or the U.S. Corps of Engineers, U.S. Army.

NOTE: The State of Louisiana does hereby reserve, and this lease shall be subject to, the imprescriptible right of surface use in the nature of a servitude in favor of the Department of Natural Resources, including its Offices and Commissions, for the sole purpose of implementing, constructing, servicing and maintaining approved coastal zone management and/or restoration projects. Utilization of any and all rights derived under this lease by the mineral lessee, its agents, successors or assigns, shall not interfere with nor hinder the reasonable surface use by the Department of Natural Resources, its Offices or Commissions, as herein above reserved.

NOTE: The Department of Wildlife and Fisheries has designated certain areas in the coastal waters of the State of Louisiana as Oyster Seed Bed Areas. The exact location of those Seed Bed Areas must be obtained from the Department of Wildlife and Fisheries and any work done under a mineral lease from the State of Louisiana may necessarily be conducted in conformity with the rules and regulations promulgated by the said Department of Wildlife and Fisheries for Oyster Seed Bed Areas.

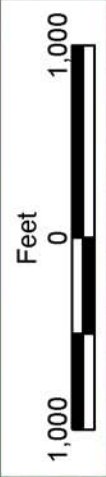
NOTE: All or a portion of this Tract lies within one nautical mile of the boundary of the Russell Sage or Marsh Island Wildlife Refuge and Game Preserve. Any activities connected with this lease conducted within this Tract which may pose potential environmental impacts to the said Wildlife Refuge and Game Preserve should be coordinated with the Louisiana Department of Wildlife and Fisheries.

Applicant: S.R. Verret

Bidder	Cash Payment	Price/Acre	Rental	Oil	Gas	Other



IBERIA PARISH



P.O.B.
X=1,882,015.91
Y=320,534.85

S.L. 3317

SL 3498

EAST COTE BLANCHE BAY

T17S - R7E

TRACT 36286 - Iberia Parish, Louisiana

All of the lands now or formerly constituting the beds and bottoms of all water bodies of every nature and description the title of which vests in the State of Louisiana, together with all islands arising therein and other lands formed by accretion or by reliction, where allowed by law, excepting tax adjudicated lands, and not presently under mineral lease on May 12, 2004, situated in Iberia Parish, Louisiana, and more particularly described as follows: Beginning at a point having Coordinates of X = 1,882,015.91 and Y = 320,534.85; thence South 3,000.00 feet to a point having Coordinates of X = 1,882,015.91 and Y = 317,534.85; thence West 8,179.91 feet to a point on the East boundary of the Exclusive Geophysical Permit No. 20031001 having Coordinates of X = 1,873,836.00 and Y = 317,534.85; thence North 1,306.12 feet along the said East boundary of the Exclusive Geophysical Permit No. 20031001 to an intersection point on the Southern boundary of the Russell Sage Foundation Marsh Island Wildlife Management Area and Game Preserve having Coordinates of X = 1,873,836.00 and Y = 318,840.97; thence Northeasterly along the meanders of the said Russell Sage Foundation Marsh Island Wildlife Management Area and Game Preserve to a point having Coordinates of X = 1,876,287.22 and Y = 320,534.85; thence East 5,728.69 feet to the point of beginning, **LESS AND EXCEPT** that portion, if any, of State Lease No. 3317, as amended, and State Lease No. 3498, as amended, that may lie within the above described tract, containing approximately **513 acres**, all as more particularly outlined on a plat on file in the Office of Mineral Resources, Department of Natural Resources. All bearings, distances and coordinates are based on Louisiana Coordinate System of 1927, (North or South Zone), where applicable.

NOTE: The above description of the Tract nominated for lease has been provided and corrected, where required, exclusively by the nomination party. Any mineral lease selected from this Tract and awarded by the Louisiana State Mineral Board shall be without warranty of any kind, either express, implied, or statutory, including, but not limited to, the implied warranties of merchantability and fitness for a particular purpose. Should the mineral lease awarded by the Louisiana State Mineral Board be subsequently modified, cancelled or abrogated due to the existence of conflicting leases, operating agreements, private claims or other future obligations or conditions which may affect all or any portion of the leased Tract, it shall not relieve the Lessee of the obligation to pay any bonus due thereon to the Louisiana State Mineral Board, nor shall the Louisiana State Mineral Board be obligated to refund any consideration paid by the Lessor prior to such modification, cancellation, or abrogation, including, but not limited to, bonuses, rentals and royalties.

NOTE: The above described tract may be in the vicinity of existing shell reefs where drilling and dredging operations must be conducted in strict conformity with the regulations adopted by the Louisiana Department of Wildlife and Fisheries and/or the U.S. Corps of Engineers, U.S. Army.

NOTE: The State of Louisiana does hereby reserve, and this lease shall be subject to, the imprescriptible right of surface use in the nature of a servitude in favor of the Department of Natural Resources, including its Offices and Commissions, for the sole purpose of implementing, constructing, servicing and maintaining approved coastal zone management and/or restoration projects. Utilization of any and all rights derived under this lease by the mineral lessee, its agents, successors or assigns, shall not interfere with nor hinder the reasonable surface use by the Department of Natural Resources, its Offices or Commissions, as herein above reserved.

NOTE: The Department of Wildlife and Fisheries has designated certain areas in the coastal waters of the State of Louisiana as Oyster Seed Bed Areas. The exact location of those Seed Bed Areas must be obtained from the Department of Wildlife and Fisheries and any work done under a mineral lease from the State of Louisiana may necessarily be conducted in conformity with the rules and regulations promulgated by the said Department of Wildlife and Fisheries for Oyster Seed Bed Areas.

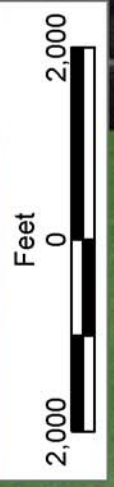
NOTE: All or a portion of this Tract lies within one nautical mile of the boundary of the Russell Sage or Marsh Island Wildlife Refuge and Game Preserve. Any activities connected with this lease conducted within this Tract which may pose potential environmental impacts to the said Wildlife Refuge and Game Preserve should be coordinated with the Louisiana Department of Wildlife and Fisheries.

Applicant: S.R. Verret

Bidder	Cash Payment	Price/Acre	Rental	Oil	Gas	Other



IBERIA PARISH



P.O.B.
X=1,882,015.91
Y=320,534.85

SL 3317



SL 3498

EAST COTE BLANCHE BAY

T17S - R7E

GEO 20031001

TRACT 36287 - Iberia Parish, Louisiana

All of the lands now or formerly constituting the beds and bottoms of all water bodies of every nature and description the title of which vests in the State of Louisiana, together with all islands arising therein and other lands formed by accretion or by reliction, where allowed by law, excepting tax adjudicated lands, and not presently under mineral lease on May 12, 2004, situated in Iberia Parish, Louisiana, and more particularly described as follows: Beginning at a point having Coordinates of X = 1,882,015.91 and Y = 320,534.85; thence East 6,578.59 feet to a point having Coordinates of X = 1,888,594.50 and Y = 320,534.85; thence South 3,000.00 feet to a point having Coordinates of X = 1,888,594.50 and Y = 317,534.85; thence West 6,578.59 feet to a point having Coordinates of X = 1,882,015.91 and Y = 317,534.85; thence North 3,000.00 feet to the point of beginning, **LESS AND EXCEPT** that portion, if any, of State Lease No. 3317, as amended, that may lie within the above described tract, containing approximately **453.07 acres**, all as more particularly outlined on a plat on file in the Office of Mineral Resources, Department of Natural Resources. All bearings, distances and coordinates are based on Louisiana Coordinate System of 1927, (North or South Zone), where applicable.

NOTE: The above description of the Tract nominated for lease has been provided and corrected, where required, exclusively by the nomination party. Any mineral lease selected from this Tract and awarded by the Louisiana State Mineral Board shall be without warranty of any kind, either express, implied, or statutory, including, but not limited to, the implied warranties of merchantability and fitness for a particular purpose. Should the mineral lease awarded by the Louisiana State Mineral Board be subsequently modified, cancelled or abrogated due to the existence of conflicting leases, operating agreements, private claims or other future obligations or conditions which may affect all or any portion of the leased Tract, it shall not relieve the Lessee of the obligation to pay any bonus due thereon to the Louisiana State Mineral Board, nor shall the Louisiana State Mineral Board be obligated to refund any consideration paid by the Lessor prior to such modification, cancellation, or abrogation, including, but not limited to, bonuses, rentals and royalties.

NOTE: The above described tract may be in the vicinity of existing shell reefs where drilling and dredging operations must be conducted in strict conformity with the regulations adopted by the Louisiana Department of Wildlife and Fisheries and/or the U.S. Corps of Engineers, U.S. Army.

NOTE: The State of Louisiana does hereby reserve, and this lease shall be subject to, the imprescriptible right of surface use in the nature of a servitude in favor of the Department of Natural Resources, including its Offices and Commissions, for the sole purpose of implementing, constructing, servicing and maintaining approved coastal zone management and/or restoration projects. Utilization of any and all rights derived under this lease by the mineral lessee, its agents, successors or assigns,

shall not interfere with nor hinder the reasonable surface use by the Department of Natural Resources, its Offices or Commissions, as herein above reserved.

NOTE: The Department of Wildlife and Fisheries has designated certain areas in the coastal waters of the State of Louisiana as Oyster Seed Bed Areas. The exact location of those Seed Bed Areas must be obtained from the Department of Wildlife and Fisheries and any work done under a mineral lease from the State of Louisiana may necessarily be conducted in conformity with the rules and regulations promulgated by the said Department of Wildlife and Fisheries for Oyster Seed Bed Areas.

NOTE: All or a portion of this Tract lies within one nautical mile of the boundary of the Russell Sage or Marsh Island Wildlife Refuge and Game Preserve. Any activities connected with this lease conducted within this Tract which may pose potential environmental impacts to the said Wildlife Refuge and Game Preserve should be coordinated with the Louisiana Department of Wildlife and Fisheries.

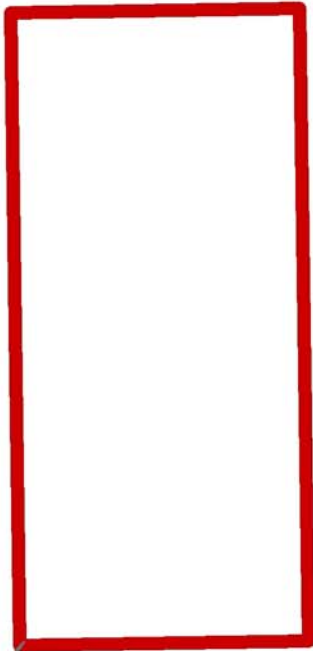
Applicant: S.R. Verret

Bidder	Cash Payment	Price/Acre	Rental	Oil	Gas	Other



IBERIA PARISH

P.O.B.
X=1,882,015.91
Y=320,534.85



EAST COTE BLANCHE BAY

