

TRACT 36268 - Jefferson Parish, Louisiana

All of the lands now or formerly constituting the beds and bottoms of all water bodies of every nature and description the title of which vests in the State of Louisiana, together with all islands arising therein and other lands formed by accretion or by reliction, where allowed by law, excepting tax adjudicated lands, and not presently under mineral lease on May 12, 2004, situated in Jefferson Parish, Louisiana, and more particularly described as follows: Beginning at a point having Coordinates of X = 2,378,500.00 and Y = 395,160.00; thence South 9,760.00 feet to a point having Coordinates of X = 2,378,500.00 and Y = 385,400.00; thence West 13,600.00 feet to a point having Coordinates of X = 2,364,900.00 and Y = 385,400.00; thence North 2,000.00 feet to a point having Coordinates of X = 2,364,900.00 and Y = 387,400.00; thence West 4,880.00 feet to a point having Coordinates of X = 2,360,020.00 and Y = 387,400.00; thence North 7,065.05 feet to a point on the Southern boundary line of State Lease No. 17709 having Coordinates of X = 2,360,020.00 and Y = 394,465.05; thence along the boundary of said State Lease No. 17709 the following courses: South 74 degrees 13 minutes 07 seconds East 606.85 feet, East 1,230.93 feet and North 12 degrees 44 minutes 08 seconds East 881.69 feet to a point on the Eastern boundary line of said State Lease No. 17709 having Coordinates of X = 2,362,029.28 and Y = 395,160.00; thence East 16,470.72 feet to the point of beginning, containing approximately **2,499.00 acres**, all as more particularly outlined on a plat on file in the Office of Mineral Resources, Department of Natural Resources. All bearings, distances and coordinates are based on Louisiana Coordinate System of 1927, (North or South Zone), where applicable.

NOTE: The above description of the Tract nominated for lease has been provided and corrected, where required, exclusively by the nomination party. Any mineral lease selected from this Tract and awarded by the Louisiana State Mineral Board shall be without warranty of any kind, either express, implied, or statutory, including, but not limited to, the implied warranties of merchantability and fitness for a particular purpose. Should the mineral lease awarded by the Louisiana State Mineral Board be subsequently modified, cancelled or abrogated due to the existence of conflicting leases, operating agreements, private claims or other future obligations or conditions which may affect all or any portion of the leased Tract, it shall not relieve the Lessee of the obligation to pay any bonus due thereon to the Louisiana State Mineral Board, nor shall the Louisiana State Mineral Board be obligated to refund any consideration paid by the Lessor prior to such modification, cancellation, or abrogation, including, but not limited to, bonuses, rentals and royalties.

NOTE: The State of Louisiana does hereby reserve, and this lease shall be subject to, the imprescriptible right of surface use in the nature of a servitude in favor of the Department of Natural Resources, including its Offices and Commissions, for the sole purpose of implementing, constructing, servicing and maintaining approved coastal zone management

and/or restoration projects. Utilization of any and all rights derived under this lease by the mineral lessee, its agents, successors or assigns, shall not interfere with nor hinder the reasonable surface use by the Department of Natural Resources, its Offices or Commissions, as herein above reserved.

Applicant: Chris Roy

Bidder	Cash Payment	Price/Acre	Rental	Oil	Gas	Other



P.O.B.
X=2,378,500.00
Y=395,160.00



JEFFERSON PARISH

T15S - R23E

T16S - R23E

SL 17709

ST CHARLES PARISH

LAKE SALVADOR

TRACT 36269 - Portion of Block 11, Breton Sound Area, Plaquemines and St. Bernard Parishes, Louisiana

All of the lands now or formerly constituting the beds and bottoms of all water bodies of every nature and description the title of which vests in the State of Louisiana, together with all islands arising therein and other lands formed by accretion or by reliction, where allowed by law, excepting tax adjudicated lands, and not presently under mineral lease on May 12, 2004, situated in Plaquemines and St. Bernard Parishes, Louisiana, and more particularly described as follows: Beginning at a point on the West line of Block 11, Breton Sound Area, having Coordinates of X = 2,709,100.00 and Y = 359,205.00; thence North 7,375.00 feet on the West line of said Block 11 to its Northwest corner having Coordinates of X = 2,709,100.00 and Y = 366,580.00; thence East 14,750.00 feet on the North line of said Block 11 to its Northeast corner having Coordinates of X = 2,723,850.00 and Y = 366,580.00; thence South 7,375.00 feet on the East line of said Block 11 to a point having Coordinates of X = 2,723,850.00 and Y = 359,205.00; thence West 14,750.00 feet to the point of beginning, containing approximately **2,497.27 acres**, all as more particularly outlined on a plat on file in the Office of Mineral Resources, Department of Natural Resources. All bearings, distances and coordinates are based on Louisiana Coordinate System of 1927, (North or South Zone), where applicable.

NOTE: The above description of the Tract nominated for lease has been provided and corrected, where required, exclusively by the nomination party. Any mineral lease selected from this Tract and awarded by the Louisiana State Mineral Board shall be without warranty of any kind, either express, implied, or statutory, including, but not limited to, the implied warranties of merchantability and fitness for a particular purpose. Should the mineral lease awarded by the Louisiana State Mineral Board be subsequently modified, cancelled or abrogated due to the existence of conflicting leases, operating agreements, private claims or other future obligations or conditions which may affect all or any portion of the leased Tract, it shall not relieve the Lessee of the obligation to pay any bonus due thereon to the Louisiana State Mineral Board, nor shall the Louisiana State Mineral Board be obligated to refund any consideration paid by the Lessor prior to such modification, cancellation, or abrogation, including, but not limited to, bonuses, rentals and royalties.

NOTE: The State of Louisiana does hereby reserve, and this lease shall be subject to, the imprescriptible right of surface use in the nature of a servitude in favor of the Department of Natural Resources, including its Offices and Commissions, for the sole purpose of implementing, constructing, servicing and maintaining approved coastal zone management and/or restoration projects. Utilization of any and all rights derived under this lease by the mineral lessee, its agents, successors or assigns, shall not interfere with nor hinder the reasonable surface use by the Department of Natural Resources, its Offices or Commissions, as herein above reserved.

Applicant: Angelle & Donohue Oil & Gas Properties, Inc.

Bidder	Cash Payment	Price/Acre	Rental	Oil	Gas	Other



ST BERNARD PARISH

BLOCK BS0006

BRETON SOUND AREA

BLOCK BS0011

BLOCK BS0010

PLAQUEMINES PARISH

SL 8191

BLOCK BS0012

P.O.B.
X=2,709,100.00
Y=359,205.00



TRACT 36270 - Portion of Block 13, Breton Sound Area, Plaquemines and St. Bernard Parishes, Louisiana

All of the lands now or formerly constituting the beds and bottoms of all water bodies of every nature and description the title of which vests in the State of Louisiana, together with all islands arising therein and other lands formed by accretion or by reliction, where allowed by law, excepting tax adjudicated lands, and not presently under mineral lease on May 12, 2004, situated in Plaquemines and St. Bernard Parishes, Louisiana, and more particularly described as follows: Beginning at a point on the East line of Block 13, Breton Sound Area, having Coordinates of X = 2,694,350.00 and Y = 359,205.00; thence West 14,750.00 feet to a point on the West line of said Block 13 having Coordinates of X = 2,679,600.00 and Y = 359,205.00; thence North 7,375.00 feet on the West line of said Block 13 to its Northwest corner having Coordinates of X = 2,679,600.00 and Y = 366,580.00; thence East 14,750.00 feet on the North line of said Block 13 to its Northeast corner having Coordinates of X = 2,694,350.00 and Y = 366,580.00; thence South 7,375.00 feet on the East line of said Block 13 to the point of beginning, containing approximately **2,497.27 acres**, all as more particularly outlined on a plat on file in the Office of Mineral Resources, Department of Natural Resources. All bearings, distances and coordinates are based on Louisiana Coordinate System of 1927, (North or South Zone), where applicable.

NOTE: The above description of the Tract nominated for lease has been provided and corrected, where required, exclusively by the nomination party. Any mineral lease selected from this Tract and awarded by the Louisiana State Mineral Board shall be without warranty of any kind, either express, implied, or statutory, including, but not limited to, the implied warranties of merchantability and fitness for a particular purpose. Should the mineral lease awarded by the Louisiana State Mineral Board be subsequently modified, cancelled or abrogated due to the existence of conflicting leases, operating agreements, private claims or other future obligations or conditions which may affect all or any portion of the leased Tract, it shall not relieve the Lessee of the obligation to pay any bonus due thereon to the Louisiana State Mineral Board, nor shall the Louisiana State Mineral Board be obligated to refund any consideration paid by the Lessor prior to such modification, cancellation, or abrogation, including, but not limited to, bonuses, rentals and royalties.

NOTE: The State of Louisiana does hereby reserve, and this lease shall be subject to, the imprescriptible right of surface use in the nature of a servitude in favor of the Department of Natural Resources, including its Offices and Commissions, for the sole purpose of implementing, constructing, servicing and maintaining approved coastal zone management and/or restoration projects. Utilization of any and all rights derived under this lease by the mineral lessee, its agents, successors or assigns, shall not interfere with nor hinder the reasonable surface use by the Department of Natural Resources, its Offices or Commissions, as herein above reserved.

Applicant: Angelle & Donohue Oil & Gas Properties, Inc.

Bidder	Cash Payment	Price/Acre	Rental	Oil	Gas	Other



ST BERNARD PARISH

BLOCK BS0004

BRETON SOUND AREA

BLOCK BS0013

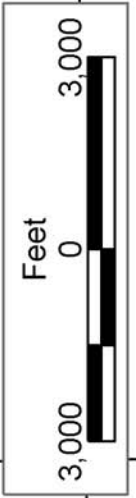
BLOCK BS0013

PLAQUEMINES PARISH

BLOCK BS0014

BLOCK BS0012

P.O.B.
X=2,694,350.00
Y=359,205.00



TRACT 36271 - Portion of Block 12, Breton Sound Area, Plaquemines and St. Bernard Parishes, Louisiana

All of the lands now or formerly constituting the beds and bottoms of all water bodies of every nature and description the title of which vests in the State of Louisiana, together with all islands arising therein and other lands formed by accretion or by reliction, where allowed by law, excepting tax adjudicated lands, and not presently under mineral lease on May 12, 2004, situated in Plaquemines and St. Bernard Parishes, Louisiana, and more particularly described as follows: Beginning at a point on the West line of Block 12, Breton Sound Area, having Coordinates of X = 2,694,350.00 and Y = 359,205.00; thence North 7,375.00 feet on the West line of said Block 12 to its Northwest corner having Coordinates of X = 2,694,350.00 and Y = 366,580.00; thence East 14,750.00 feet on the North line of said Block 12 to its Northeast corner having Coordinates of X = 2,709,100.00 and Y = 366,580.00; thence South 7,375.00 feet on the East line of said Block 12 to a point having Coordinates of X = 2,709,100.00 and Y = 359,205.00; thence West 14,750.00 feet to the point of beginning, containing approximately **2,497.27 acres**, all as more particularly outlined on a plat on file in the Office of Mineral Resources, Department of Natural Resources. All bearings, distances and coordinates are based on Louisiana Coordinate System of 1927, (North or South Zone), where applicable.

NOTE: The above description of the Tract nominated for lease has been provided and corrected, where required, exclusively by the nomination party. Any mineral lease selected from this Tract and awarded by the Louisiana State Mineral Board shall be without warranty of any kind, either express, implied, or statutory, including, but not limited to, the implied warranties of merchantability and fitness for a particular purpose. Should the mineral lease awarded by the Louisiana State Mineral Board be subsequently modified, cancelled or abrogated due to the existence of conflicting leases, operating agreements, private claims or other future obligations or conditions which may affect all or any portion of the leased Tract, it shall not relieve the Lessee of the obligation to pay any bonus due thereon to the Louisiana State Mineral Board, nor shall the Louisiana State Mineral Board be obligated to refund any consideration paid by the Lessor prior to such modification, cancellation, or abrogation, including, but not limited to, bonuses, rentals and royalties.

NOTE: The State of Louisiana does hereby reserve, and this lease shall be subject to, the imprescriptible right of surface use in the nature of a servitude in favor of the Department of Natural Resources, including its Offices and Commissions, for the sole purpose of implementing, constructing, servicing and maintaining approved coastal zone management and/or restoration projects. Utilization of any and all rights derived under this lease by the mineral lessee, its agents, successors or assigns, shall not interfere with nor hinder the reasonable surface use by the Department of Natural Resources, its Offices or Commissions, as herein above reserved.

Applicant: Angelle & Donohue Oil & Gas Properties, Inc.

Bidder	Cash Payment	Price/Acre	Rental	Oil	Gas	Other



ST BERNARD PARISH

BLOCK BS0005

BRETON SOUND AREA

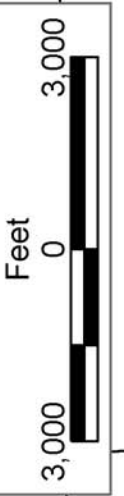
BLOCK BS0013

BLOCK BS0012

BLOCK BS0011

PLAQUEMINES PARISH

P.O.B.
X=2,694,350.00
Y=359,205.00



TRACT 36272 - Portion of Block 13, Breton Sound Area, Plaquemines and St. Bernard Parishes, Louisiana

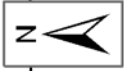
All of the lands now or formerly constituting the beds and bottoms of all water bodies of every nature and description the title of which vests in the State of Louisiana, together with all islands arising therein and other lands formed by accretion or by reliction, where allowed by law, excepting tax adjudicated lands, and not presently under mineral lease on May 12, 2004, situated in Plaquemines and St. Bernard Parishes, Louisiana, and more particularly described as follows: Beginning at a point on the East line of Block 13, Breton Sound Area, having Coordinates of X = 2,694,350.00 and Y = 359,205.00; thence South 7,375.00 feet on the East line of said Block 13 to its Southeast corner having Coordinates of X = 2,694,350.00 and Y = 351,830.00; thence West 14,750.00 feet on the South line of said Block 13 to its Southwest corner having Coordinates of X = 2,679,600.00 and Y = 351,830.00; thence North 7,375.00 feet on the West line of said Block 13 to a point having Coordinates of X = 2,679,600.00 and Y = 359,205.00; thence East 14,750.00 feet to the point of beginning, containing approximately **2,497.27 acres**, all as more particularly outlined on a plat on file in the Office of Mineral Resources, Department of Natural Resources. All bearings, distances and coordinates are based on Louisiana Coordinate System of 1927, (North or South Zone), where applicable.

NOTE: The above description of the Tract nominated for lease has been provided and corrected, where required, exclusively by the nomination party. Any mineral lease selected from this Tract and awarded by the Louisiana State Mineral Board shall be without warranty of any kind, either express, implied, or statutory, including, but not limited to, the implied warranties of merchantability and fitness for a particular purpose. Should the mineral lease awarded by the Louisiana State Mineral Board be subsequently modified, cancelled or abrogated due to the existence of conflicting leases, operating agreements, private claims or other future obligations or conditions which may affect all or any portion of the leased Tract, it shall not relieve the Lessee of the obligation to pay any bonus due thereon to the Louisiana State Mineral Board, nor shall the Louisiana State Mineral Board be obligated to refund any consideration paid by the Lessor prior to such modification, cancellation, or abrogation, including, but not limited to, bonuses, rentals and royalties.

NOTE: The State of Louisiana does hereby reserve, and this lease shall be subject to, the imprescriptible right of surface use in the nature of a servitude in favor of the Department of Natural Resources, including its Offices and Commissions, for the sole purpose of implementing, constructing, servicing and maintaining approved coastal zone management and/or restoration projects. Utilization of any and all rights derived under this lease by the mineral lessee, its agents, successors or assigns, shall not interfere with nor hinder the reasonable surface use by the Department of Natural Resources, its Offices or Commissions, as herein above reserved.

Applicant: Angelle & Donohue Oil & Gas Properties, Inc.

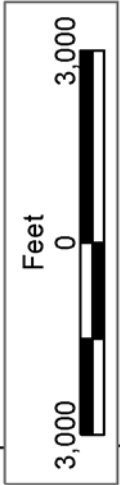
Bidder	Cash Payment	Price/Acre	Rental	Oil	Gas	Other



BLOCK BS0012

P.O.B.
X=2,694,350.00
Y=359,205.00

BLOCK BS0021



BLOCK BS0013

BLOCK BS0020

BRETON SOUND AREA

BLOCK BS0014

ST BERNARD
PARISH

PLAQUEMINES
PARISH

BLOCK BS0019

TRACT 36273 - Portion of Block 12, Breton Sound Area, Plaquemines Parish, Louisiana

All of the lands now or formerly constituting the beds and bottoms of all water bodies of every nature and description the title of which vests in the State of Louisiana, together with all islands arising therein and other lands formed by accretion or by reliction, where allowed by law, excepting tax adjudicated lands, and not presently under mineral lease on May 12, 2004, situated in Plaquemines Parish, Louisiana, and more particularly described as follows: Beginning at a point on the West line of Block 12, Breton Sound Area, having Coordinates of X = 2,694,350.00 and Y = 359,205.00; thence East 14,750.00 feet to a point on the East line of said Block 12 having Coordinates of X = 2,709,100.00 and Y = 359,205.00; thence South 7,375.00 feet on the East line of said Block 12 to its Southeast corner having Coordinates of X = 2,709,100.00 and Y = 351,830.00; thence West 14,750.00 feet on the South line of said Block 12 to it's Southwest corner having Coordinates of X = 2,694,350.00 and Y = 351,830.00; thence North 7,375.00 feet on the West line of said Block 12 to the point of beginning, containing approximately **2,497.27 acres**, all as more particularly outlined on a plat on file in the Office of Mineral Resources, Department of Natural Resources. All bearings, distances and coordinates are based on Louisiana Coordinate System of 1927, (North or South Zone), where applicable.

NOTE: The above description of the Tract nominated for lease has been provided and corrected, where required, exclusively by the nomination party. Any mineral lease selected from this Tract and awarded by the Louisiana State Mineral Board shall be without warranty of any kind, either express, implied, or statutory, including, but not limited to, the implied warranties of merchantability and fitness for a particular purpose. Should the mineral lease awarded by the Louisiana State Mineral Board be subsequently modified, cancelled or abrogated due to the existence of conflicting leases, operating agreements, private claims or other future obligations or conditions which may affect all or any portion of the leased Tract, it shall not relieve the Lessee of the obligation to pay any bonus due thereon to the Louisiana State Mineral Board, nor shall the Louisiana State Mineral Board be obligated to refund any consideration paid by the Lessor prior to such modification, cancellation, or abrogation, including, but not limited to, bonuses, rentals and royalties.

NOTE: The State of Louisiana does hereby reserve, and this lease shall be subject to, the imprescriptible right of surface use in the nature of a servitude in favor of the Department of Natural Resources, including its Offices and Commissions, for the sole purpose of implementing, constructing, servicing and maintaining approved coastal zone management and/or restoration projects. Utilization of any and all rights derived under this lease by the mineral lessee, its agents, successors or assigns, shall not interfere with nor hinder the reasonable surface use by the Department of Natural Resources, its Offices or Commissions, as herein above reserved.

Applicant: Angelle & Donohue Oil & Gas Properties, Inc.

Bidder	Cash Payment	Price/Acre	Rental	Oil	Gas	Other



ST BERNARD PARISH

BRETON SOUND AREA

PLAQUEMINES PARISH

P.O.B.
X=2,694,350.00
Y=359,205.00

BLOCK
BS0011

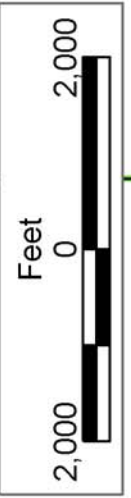
BLOCK BS0012

BLOCK BS0013

SL 2326

SL 1998

BLOCK BS0021



TRACT 36274 - Portion of Block 11, Breton Sound Area, Plaquemines Parish, Louisiana

All of the lands now or formerly constituting the beds and bottoms of all water bodies of every nature and description the title of which vests in the State of Louisiana, together with all islands arising therein and other lands formed by accretion or by reliction, where allowed by law, excepting tax adjudicated lands, and not presently under mineral lease on May 12, 2004, situated in Plaquemines Parish, Louisiana, and more particularly described as follows: Beginning at a point on the West line of Block 11, Breton Sound Area, having Coordinates of X = 2,709,100.00 and Y = 359,205.00; thence East 14,750.00 feet to a point on the East line of said Block 11 having Coordinates of X = 2,723,850.00 and Y = 359,205.00; thence South 2,875.00 feet on the East line of said Block 11 to the Northeast corner of State Lease No. 8191, as amended, having Coordinates of X = 2,723,850.00 and Y = 356,330.00; thence along the boundary of said State Lease No. 8191 the following courses: West 7,375.00 feet and South 4,500.00 feet to its Southwest corner and a point on the South line of said Block 11 having Coordinates of X = 2,716,475.00 and Y = 351,830.00; thence West 7,375.00 feet on the South line of said Block 11 to its Southwest corner having Coordinates of X = 2,709,100.00 and Y = 351,830.00; thence North 7,375.00 feet on the West line of said Block 11 to the point of beginning, containing approximately **1,735.39 acres**, all as more particularly outlined on a plat on file in the Office of Mineral Resources, Department of Natural Resources. All bearings, distances and coordinates are based on Louisiana Coordinate System of 1927, (North or South Zone), where applicable.

NOTE: The above description of the Tract nominated for lease has been provided and corrected, where required, exclusively by the nomination party. Any mineral lease selected from this Tract and awarded by the Louisiana State Mineral Board shall be without warranty of any kind, either express, implied, or statutory, including, but not limited to, the implied warranties of merchantability and fitness for a particular purpose. Should the mineral lease awarded by the Louisiana State Mineral Board be subsequently modified, cancelled or abrogated due to the existence of conflicting leases, operating agreements, private claims or other future obligations or conditions which may affect all or any portion of the leased Tract, it shall not relieve the Lessee of the obligation to pay any bonus due thereon to the Louisiana State Mineral Board, nor shall the Louisiana State Mineral Board be obligated to refund any consideration paid by the Lessor prior to such modification, cancellation, or abrogation, including, but not limited to, bonuses, rentals and royalties.

NOTE: The State of Louisiana does hereby reserve, and this lease shall be subject to, the imprescriptible right of surface use in the nature of a servitude in favor of the Department of Natural Resources, including its Offices and Commissions, for the sole purpose of implementing, constructing, servicing and maintaining approved coastal zone management and/or restoration projects. Utilization of any and all rights derived

under this lease by the mineral lessee, its agents, successors or assigns, shall not interfere with nor hinder the reasonable surface use by the Department of Natural Resources, its Offices or Commissions, as herein above reserved.

Applicant: Angelle & Donohue Oil & Gas Properties, Inc.

Bidder	Cash Payment	Price/Acre	Rental	Oil	Gas	Other



ST BERNARD PARISH

BRETON SOUND AREA

PLAQUEMINES PARISH

P.O.B.
X=2,709,100.00
Y=359,205.00

BLOCK BS0012

BLOCK BS0010

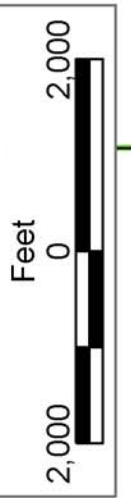
BLOCK BS0011

SL 8191

SL 2326

BLOCK BS0022

SL 1998



TRACT 36275 - Portion of Block 20, Breton Sound Area, Plaquemines Parish, Louisiana

All of the lands now or formerly constituting the beds and bottoms of all water bodies of every nature and description the title of which vests in the State of Louisiana, together with all islands arising therein and other lands formed by accretion or by reliction, where allowed by law, excepting tax adjudicated lands, and not presently under mineral lease on May 12, 2004, situated in Plaquemines Parish, Louisiana, and more particularly described as follows: Beginning at the Northeast corner of Block 20, Breton Sound Area having Coordinates of X = 2,694,350.00 and Y = 351,830.00; thence South 7,375.00 feet on the East line of said Block 20 to a point having Coordinates of X = 2,694,350.00 and Y = 344,455.00; thence West 13,250.00 feet to a point on the Eastern boundary of State Lease No. 17482 having Coordinates of X = 2,681,100.00 and Y = 344,455.00; thence along the boundary of said State Lease No. 17482 the following courses: North 625.00 feet, West 330.00 feet, North 750.00 feet, and West 1,170.00 feet to its Northwest corner and a point on the West line of said Block 20 having Coordinates of X = 2,679,600.00 and Y = 345,830.00; thence North 6,000.00 feet on the West line of said Block 20 to its Northwest corner having Coordinates of X = 2,679,600.00 and Y = 351,830.00; thence East 14,750.00 feet on the North line of said Block 20 to the point of beginning, containing approximately **2,455.61 acres**, all as more particularly outlined on a plat on file in the Office of Mineral Resources, Department of Natural Resources. All bearings, distances and coordinates are based on Louisiana Coordinate System of 1927, (North or South Zone), where applicable.

NOTE: The above description of the Tract nominated for lease has been provided and corrected, where required, exclusively by the nomination party. Any mineral lease selected from this Tract and awarded by the Louisiana State Mineral Board shall be without warranty of any kind, either express, implied, or statutory, including, but not limited to, the implied warranties of merchantability and fitness for a particular purpose. Should the mineral lease awarded by the Louisiana State Mineral Board be subsequently modified, cancelled or abrogated due to the existence of conflicting leases, operating agreements, private claims or other future obligations or conditions which may affect all or any portion of the leased Tract, it shall not relieve the Lessee of the obligation to pay any bonus due thereon to the Louisiana State Mineral Board, nor shall the Louisiana State Mineral Board be obligated to refund any consideration paid by the Lessor prior to such modification, cancellation, or abrogation, including, but not limited to, bonuses, rentals and royalties.

NOTE: The State of Louisiana does hereby reserve, and this lease shall be subject to, the imprescriptible right of surface use in the nature of a servitude in favor of the Department of Natural Resources, including its Offices and Commissions, for the sole purpose of implementing, constructing, servicing and maintaining approved coastal zone management and/or restoration projects. Utilization of any and all rights derived

under this lease by the mineral lessee, its agents, successors or assigns, shall not interfere with nor hinder the reasonable surface use by the Department of Natural Resources, its Offices or Commissions, as herein above reserved.

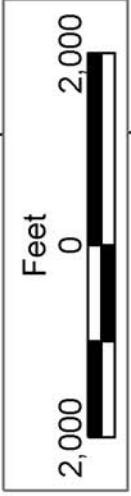
Applicant: Angelle & Donohue Oil & Gas Properties, Inc.

Bidder	Cash Payment	Price/Acre	Rental	Oil	Gas	Other



P.O.B.
X=2,694,350.00
Y=351,830.00

BLOCK
BS0021



PLAQUEMINES PARISH

BLOCK BS0013

BLOCK BS0020

BRETON SOUND AREA

BLOCK BS0019

SL 17481

SL 17482

TRACT 36276 - Portion of Block 21, Breton Sound Area, Plaquemines Parish, Louisiana

All of the lands now or formerly constituting the beds and bottoms of all water bodies of every nature and description the title of which vests in the State of Louisiana, together with all islands arising therein and other lands formed by accretion or by reliction, where allowed by law, excepting tax adjudicated lands, and not presently under mineral lease on May 12, 2004, situated in Plaquemines Parish, Louisiana, and more particularly described as follows: Beginning at the Northwest corner of Block 21, Breton Sound Area having Coordinates of X = 2,694,350.00 and Y = 351,830.00; thence East 10,100.00 feet on the North line of said Block 21 to the Northernmost Northwest corner of State Lease No. 1998, as amended having Coordinates of X = 2,704,450.00 and Y = 351,830.00; thence along the boundary of said State Lease No. 1998 the following courses: South 2,850.00 feet, South 45 degrees 20 minutes 58 seconds West 11,596.77 feet, and West 1,850.00 feet to its Southernmost Northwest corner and a point on the West line of said Block 21 having Coordinates of X = 2,694,350.00 and Y = 340,830.00; thence North 11,000.00 feet on the West line of said Block 21 to the point of beginning, containing approximately **1,778.72 acres**, all as more particularly outlined on a plat on file in the Office of Mineral Resources, Department of Natural Resources. All bearings, distances and coordinates are based on Louisiana Coordinate System of 1927, (North or South Zone), where applicable.

NOTE: The above description of the Tract nominated for lease has been provided and corrected, where required, exclusively by the nomination party. Any mineral lease selected from this Tract and awarded by the Louisiana State Mineral Board shall be without warranty of any kind, either express, implied, or statutory, including, but not limited to, the implied warranties of merchantability and fitness for a particular purpose. Should the mineral lease awarded by the Louisiana State Mineral Board be subsequently modified, cancelled or abrogated due to the existence of conflicting leases, operating agreements, private claims or other future obligations or conditions which may affect all or any portion of the leased Tract, it shall not relieve the Lessee of the obligation to pay any bonus due thereon to the Louisiana State Mineral Board, nor shall the Louisiana State Mineral Board be obligated to refund any consideration paid by the Lessor prior to such modification, cancellation, or abrogation, including, but not limited to, bonuses, rentals and royalties.

NOTE: The State of Louisiana does hereby reserve, and this lease shall be subject to, the imprescriptible right of surface use in the nature of a servitude in favor of the Department of Natural Resources, including its Offices and Commissions, for the sole purpose of implementing, constructing, servicing and maintaining approved coastal zone management and/or restoration projects. Utilization of any and all rights derived under this lease by the mineral lessee, its agents, successors or assigns, shall not interfere with nor hinder the reasonable surface use by the

Department of Natural Resources, its Offices or Commissions, as herein above reserved.

Applicant: Angelle & Donohue Oil & Gas Properties, Inc.

Bidder	Cash Payment	Price/Acre	Rental	Oil	Gas	Other



PLAQUEMINES PARISH

BLOCK BS0012

BLOCK BS0022

BLOCK BS0021

BLOCK BS0028

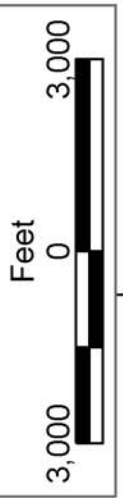
P.O.B.
X=2,694,350.00
Y=351,830.00

BRETON SOUND AREA

BLOCK BS0020

SL 1998

SL 1997



TRACT 36277 - Portion of Block 20, Breton Sound Area, Plaquemines Parish, Louisiana

All of the lands now or formerly constituting the beds and bottoms of all water bodies of every nature and description the title of which vests in the State of Louisiana, together with all islands arising therein and other lands formed by accretion or by reliction, where allowed by law, excepting tax adjudicated lands, and not presently under mineral lease on May 12, 2004, situated in Plaquemines Parish, Louisiana, and more particularly described as follows: Beginning at the Southwest corner of Block 20, Breton Sound Area having Coordinates of X = 2,679,600.00 and Y = 337,080.00; thence North 4,390.00 feet on the West line of said Block 20 to the Southwest corner of State Lease No. 17482 having Coordinates of X = 2,679,600.00 and Y = 341,470.00; thence along the boundary of said State Lease No. 17482 the following courses: East 500.00 feet, South 490.00 feet, East 2,950.00 feet, North 2,610.00 feet, West 1,950.00 feet, and North 865.00 feet to a point having Coordinates of X = 2,681,100.00 and Y = 344,455.00; thence East 13,250.00 feet to a point on the East line of said Block 20 having Coordinates of X = 2,694,350.00 and Y = 344,455.00; thence South 3,687.50 feet on the East line of said Block 20 to the Northeast corner of State Lease No. 1997, as amended having Coordinates of X = 2,694,350.00 and Y = 340,767.50; thence along the boundary of said State Lease No. 1997 the following courses: West 7,400.00 feet and South 3,687.50 feet to its Southwest corner and a point on the South line of said Block 20 having Coordinates of X = 2,686,950.00 and Y = 337,080.00; thence West 7,350.00 feet on the South line of said Block 20 to the point of beginning, containing approximately **1,639.96 acres**, all as more particularly outlined on a plat on file in the Office of Mineral Resources, Department of Natural Resources. All bearings, distances and coordinates are based on Louisiana Coordinate System of 1927, (North or South Zone), where applicable.

NOTE: The above description of the Tract nominated for lease has been provided and corrected, where required, exclusively by the nomination party. Any mineral lease selected from this Tract and awarded by the Louisiana State Mineral Board shall be without warranty of any kind, either express, implied, or statutory, including, but not limited to, the implied warranties of merchantability and fitness for a particular purpose. Should the mineral lease awarded by the Louisiana State Mineral Board be subsequently modified, cancelled or abrogated due to the existence of conflicting leases, operating agreements, private claims or other future obligations or conditions which may affect all or any portion of the leased Tract, it shall not relieve the Lessee of the obligation to pay any bonus due thereon to the Louisiana State Mineral Board, nor shall the Louisiana State Mineral Board be obligated to refund any consideration paid by the Lessor prior to such modification, cancellation, or abrogation, including, but not limited to, bonuses, rentals and royalties.

NOTE: The State of Louisiana does hereby reserve, and this lease shall be subject to, the imprescriptible right of surface use in the nature of a

servitude in favor of the Department of Natural Resources, including its Offices and Commissions, for the sole purpose of implementing, constructing, servicing and maintaining approved coastal zone management and/or restoration projects. Utilization of any and all rights derived under this lease by the mineral lessee, its agents, successors or assigns, shall not interfere with nor hinder the reasonable surface use by the Department of Natural Resources, its Offices or Commissions, as herein above reserved.

Applicant: Angelle & Donohue Oil & Gas Properties, Inc.

Bidder	Cash Payment	Price/Acre	Rental	Oil	Gas	Other



PLAQUEMINES PARISH

BRETON SOUND AREA

BLOCK BS0021

SL 1998

SL 1997

SL 2000

BLOCK BS0020

BLOCK BS0029

SL 17482

SL 17481

BLOCK BS0019

P.O.B.
X=2,679,600.00
Y=337,080.00

