

TRACT 36258 - Webster Parish, Louisiana

All of the lands now or formerly constituting the beds and bottoms of all water bodies of every nature and description the title of which vests in the State of Louisiana, together with all islands arising therein and other lands formed by accretion or by reliction, where allowed by law, excepting tax adjudicated lands, and not presently under mineral lease on May 12, 2004, situated in Webster Parish, Louisiana, and more particularly described as follows: Beginning at a point having Coordinates of X = 1,720,000.00 and Y = 646,400.00; thence East 5,800.00 feet to a point having Coordinates of X = 1,725,800.00 and Y = 646,400.00; thence South 6,000.00 feet to a point having Coordinates of X = 1,725,800.00 and Y = 640,400.00; thence West 5,300.00 feet to a point on the East boundary of State Lease No. 16531, as amended, having Coordinates of X = 1,720,500.00 and Y = 640,400.00; thence along the East and North boundaries of said State Lease No. 16531 the following: North 800.00 feet and West 500.00 feet to a point having Coordinates of X = 1,720,000.00 and Y = 641,200.00; thence North 5,200.00 feet to the point of beginning, containing approximately **240 acres**, all as more particularly outlined on a plat on file in the Office of Mineral Resources, Department of Natural Resources. All bearings, distances and coordinates are based on Louisiana Coordinate System of 1927, (North or South Zone), where applicable.

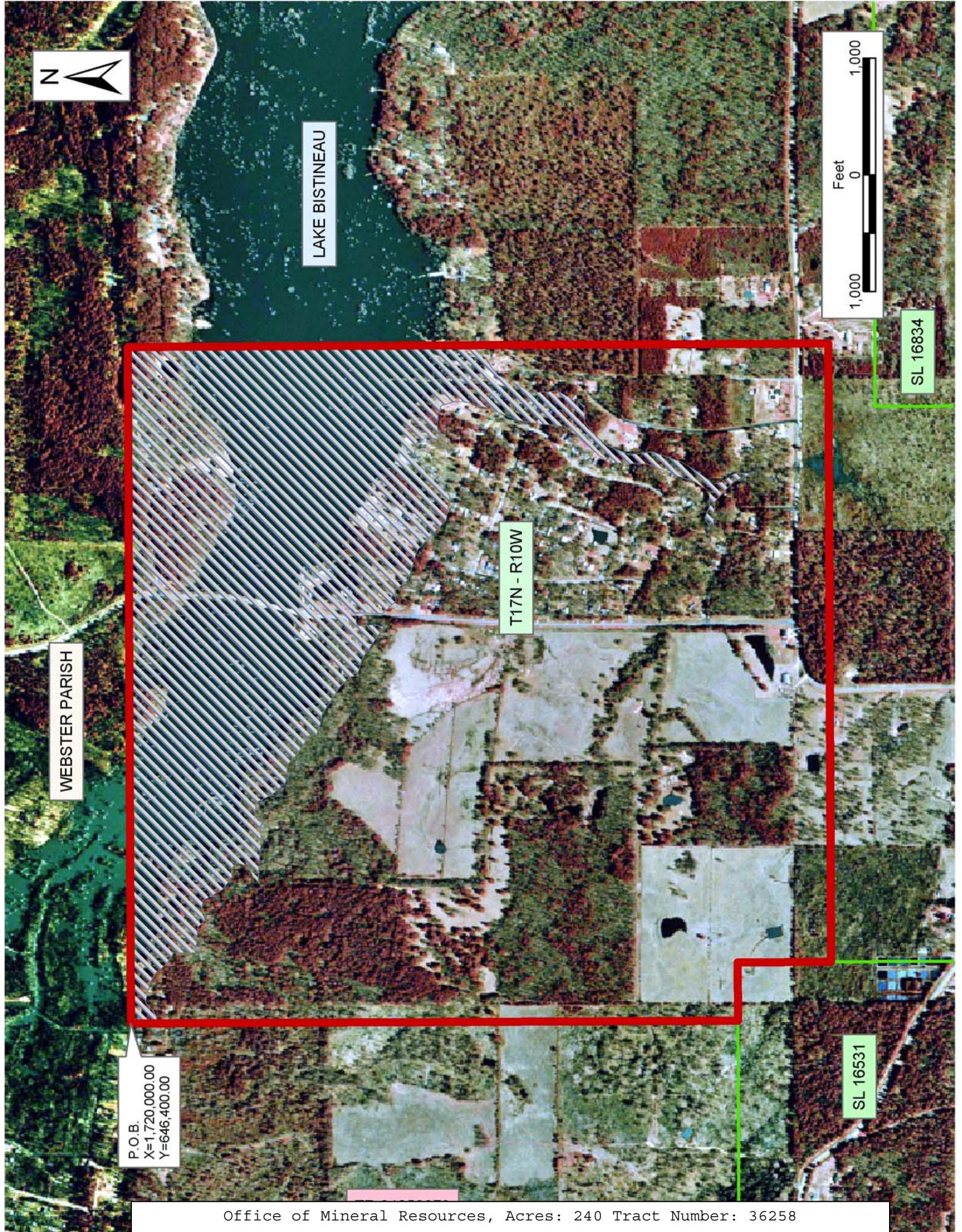
NOTE: The above description of the Tract nominated for lease has been provided and corrected, where required, exclusively by the nomination party. Any mineral lease selected from this Tract and awarded by the Louisiana State Mineral Board shall be without warranty of any kind, either express, implied, or statutory, including, but not limited to, the implied warranties of merchantability and fitness for a particular purpose. Should the mineral lease awarded by the Louisiana State Mineral Board be subsequently modified, cancelled or abrogated due to the existence of conflicting leases, operating agreements, private claims or other future obligations or conditions which may affect all or any portion of the leased Tract, it shall not relieve the Lessee of the obligation to pay any bonus due thereon to the Louisiana State Mineral Board, nor shall the Louisiana State Mineral Board be obligated to refund any consideration paid by the Lessor prior to such modification, cancellation, or abrogation, including, but not limited to, bonuses, rentals and royalties.

NOTE: This tract encompasses an area beneath which is located on the Bistineau Gas Storage Pool in the Sligo formation of the Pettet Porosity. Accordingly, any mineral related activity, including, but not limited to, the exploration and drilling for, and the production and storage of oil, gas and other liquid or gaseous minerals, conducted under a valid mineral lease which may be obtained from the State, shall be subject to any statewide orders issued by the Louisiana Office of Conservation pertinent to conducting such operations in this area and upon this tract, including particularly, but not limited to, the following: Order Nos. 287, 287-A, 287-A-1, 287-B, Supplement to 287-B, 287-B-1, 287-B-2 and 287-B-3. The successful bidder on this tract shall contact the operator of the

Bistineau Gas Storage Pool and the Office of Conservation prior to initiating and conducting any of the aforementioned activity hereon.

Applicant: Theophilus Oil, Gas & Land Services, LLC

Bidder	Cash Payment	Price/Acre	Rental	Oil	Gas	Other



LAKE BISTINEAU

WEBSTER PARISH

T17N - R10W

SL 16834



P.O.B.
X=1,720,000.00
Y=646,400.00

SL 16531

TRACT 36259 - Iberville Parish, Louisiana

All of the lands now or formerly constituting the beds and bottoms of all water bodies of every nature and description the title of which vests in the State of Louisiana, together with all islands arising therein and other lands formed by accretion or by reliction, where allowed by law, excepting tax adjudicated lands, and not presently under mineral lease on May 12, 2004, situated in Iberville Parish, Louisiana, and more particularly described as follows: Beginning at a point having Coordinates of X = 2,004,298.59 and Y = 558,921.05; thence East 3,628.48 feet to a point having of Coordinates X = 2,007,927.07 and Y = 558,921.05; thence South 3,586.40 feet to a point having Coordinates of X = 2,007,927.07 and Y = 555,334.65; thence West 3,628.48 feet to a point having Coordinates of X = 2,004,298.59 and Y = 555,334.65; thence North 3,586.40 feet to the point of beginning, containing approximately **28.90 acres**, all as more particularly outlined on a plat on file in the Office of Mineral Resources, Department of Natural Resources. All bearings, distances and coordinates are based on Louisiana Coordinate System of 1927, (North or South Zone), where applicable.

NOTE: The above description of the Tract nominated for lease has been provided and corrected, where required, exclusively by the nomination party. Any mineral lease selected from this Tract and awarded by the Louisiana State Mineral Board shall be without warranty of any kind, either express, implied, or statutory, including, but not limited to, the implied warranties of merchantability and fitness for a particular purpose. Should the mineral lease awarded by the Louisiana State Mineral Board be subsequently modified, cancelled or abrogated due to the existence of conflicting leases, operating agreements, private claims or other future obligations or conditions which may affect all or any portion of the leased Tract, it shall not relieve the Lessee of the obligation to pay any bonus due thereon to the Louisiana State Mineral Board, nor shall the Louisiana State Mineral Board be obligated to refund any consideration paid by the Lessor prior to such modification, cancellation, or abrogation, including, but not limited to, bonuses, rentals and royalties.

Applicant: Allen & Kirmse, Ltd.

Bidder	Cash Payment	Price/Acre	Rental	Oil	Gas	Other



P.O.B.
X=2,004,298.59
Y=558,921.05

T10S - R11E

LOWER GRAND RIVER

IBERVILLE PARISH

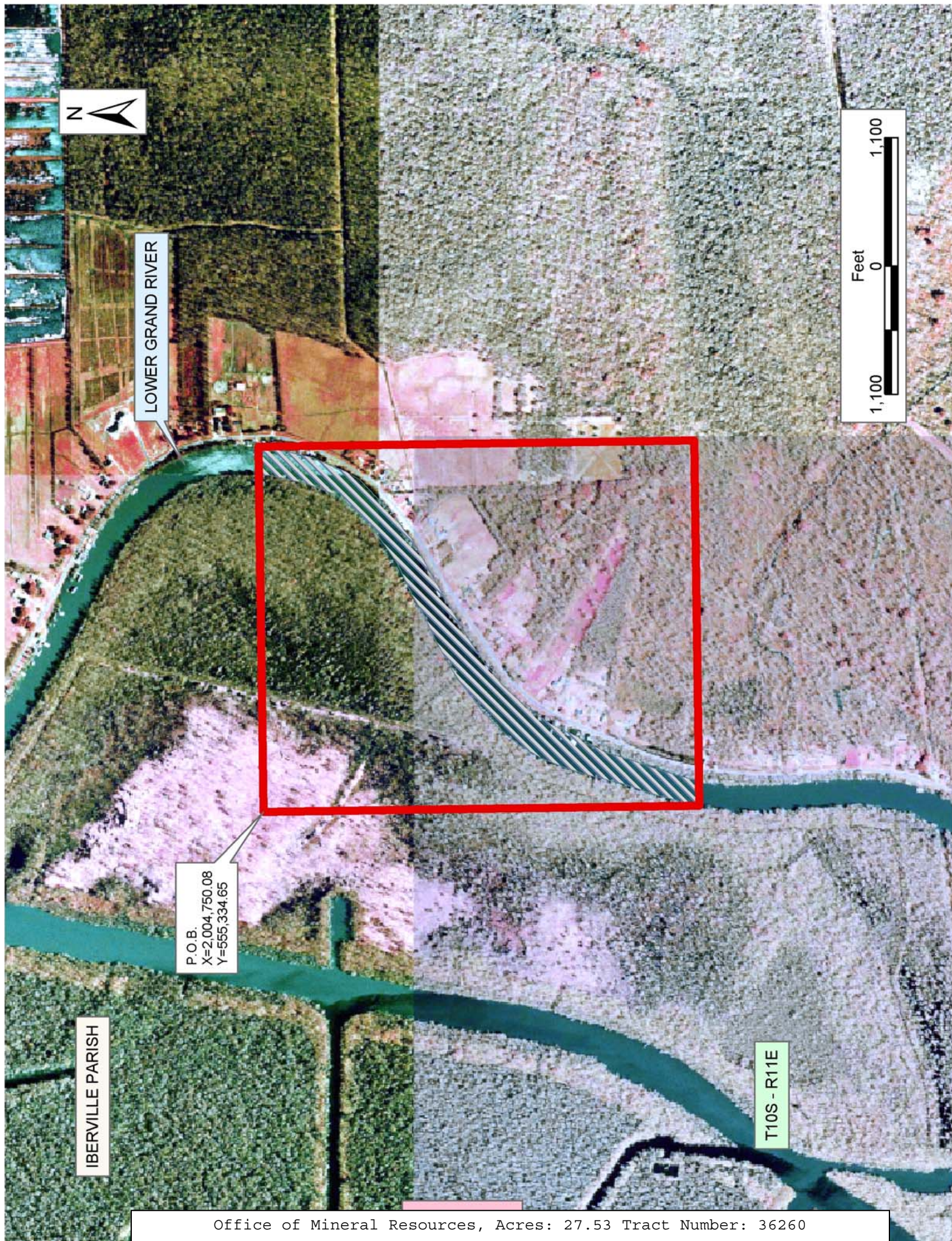
TRACT 36260 - Iberville Parish, Louisiana

All of the lands now or formerly constituting the beds and bottoms of all water bodies of every nature and description the title of which vests in the State of Louisiana, together with all islands arising therein and other lands formed by accretion or by reliction, where allowed by law, excepting tax adjudicated lands, and not presently under mineral lease on May 12, 2004, situated in Iberville Parish, Louisiana, and more particularly described as follows: Beginning at a point having Coordinates of X = 2,004,750.08 and Y = 555,334.65; thence East 3,132.58 feet to a point having Coordinates of X = 2,007,882.66 and Y = 555,334.65; thence South 3,736.47 feet to a point having of Coordinates X = 2,007,882.66 and Y = 551,598.18; thence West 3,132.58 feet to a point having Coordinates of X = 2,004,750.08 and Y = 551,598.18; thence North 3,736.47 feet to the point of beginning, containing approximately **27.53 acres**, all as more particularly outlined on a plat on file in the Office of Mineral Resources, Department of Natural Resources. All bearings, distances and coordinates are based on Louisiana Coordinate System of 1927, (North or South Zone), where applicable.

NOTE: The above description of the Tract nominated for lease has been provided and corrected, where required, exclusively by the nomination party. Any mineral lease selected from this Tract and awarded by the Louisiana State Mineral Board shall be without warranty of any kind, either express, implied, or statutory, including, but not limited to, the implied warranties of merchantability and fitness for a particular purpose. Should the mineral lease awarded by the Louisiana State Mineral Board be subsequently modified, cancelled or abrogated due to the existence of conflicting leases, operating agreements, private claims or other future obligations or conditions which may affect all or any portion of the leased Tract, it shall not relieve the Lessee of the obligation to pay any bonus due thereon to the Louisiana State Mineral Board, nor shall the Louisiana State Mineral Board be obligated to refund any consideration paid by the Lessor prior to such modification, cancellation, or abrogation, including, but not limited to, bonuses, rentals and royalties.

Applicant: Allen & Kirmse, Ltd.

Bidder	Cash Payment	Price/Acre	Rental	Oil	Gas	Other



LOWER GRAND RIVER



P.O.B.
X=2,004,750.08
Y=555,334.65

IBERVILLE PARISH

T10S - R11E

TRACT 36261 - Iberville Parish, Louisiana

All of the lands now or formerly constituting the beds and bottoms of all water bodies of every nature and description the title of which vests in the State of Louisiana, together with all islands arising therein and other lands formed by accretion or by reliction, where allowed by law, excepting tax adjudicated lands, and not presently under mineral lease on May 12, 2004, situated in Iberville Parish, Louisiana, and more particularly described as follows: Beginning at a point having Coordinates of X = 2,002,426.14 and Y = 551,598.18; thence East 2,709.10 feet to a point having Coordinates of X = 2,005,135.25 and Y = 551,598.18; thence South 3,491.73 feet to a point having Coordinates of X = 2,005,135.25 and Y = 548,106.45; thence West 2,709.10 feet to a point having Coordinates of X = 2,002,426.14 and Y = 548,106.45; thence North 3,491.73 feet to the point of beginning, containing approximately **26.57 acres**, all as more particularly outlined on a plat on file in the Office of Mineral Resources, Department of Natural Resources. All bearings, distances and coordinates are based on Louisiana Coordinate System of 1927, (North or South Zone), where applicable.

NOTE: The above description of the Tract nominated for lease has been provided and corrected, where required, exclusively by the nomination party. Any mineral lease selected from this Tract and awarded by the Louisiana State Mineral Board shall be without warranty of any kind, either express, implied, or statutory, including, but not limited to, the implied warranties of merchantability and fitness for a particular purpose. Should the mineral lease awarded by the Louisiana State Mineral Board be subsequently modified, cancelled or abrogated due to the existence of conflicting leases, operating agreements, private claims or other future obligations or conditions which may affect all or any portion of the leased Tract, it shall not relieve the Lessee of the obligation to pay any bonus due thereon to the Louisiana State Mineral Board, nor shall the Louisiana State Mineral Board be obligated to refund any consideration paid by the Lessor prior to such modification, cancellation, or abrogation, including, but not limited to, bonuses, rentals and royalties.

Applicant: Allen & Kirmse, Ltd.

Bidder	Cash Payment	Price/Acre	Rental	Oil	Gas	Other



LOWER GRAND RIVER

P.O.B.
X=2,002,426.14
Y=551,598.18

IBERVILLE PARISH

T10S - R11E



TRACT 36262 - Calcasieu and Cameron Parishes, Louisiana

All of the lands now or formerly constituting the beds and bottoms of all water bodies of every nature and description the title of which vests in the State of Louisiana, together with all islands arising therein and other lands formed by accretion or by reliction, where allowed by law, excepting tax adjudicated lands, and not presently under mineral lease on May 12, 2004, situated in Calcasieu and Cameron Parishes, Louisiana, and more particularly described as follows: Beginning at a point having Coordinates of X = 1,238,989.77 and Y = 516,800.00; thence East 13,310.23 feet to a point having Coordinates of X = 1,252,300.00 and Y = 516,800.00; thence South 7,048.15 feet to a point having Coordinates of X = 1,252,300.00 and Y = 509,751.85; thence West 13,310.23 feet to a point having Coordinates of X = 1,238,989.77 and Y = 509,751.85; thence North 7,048.15 feet to the point of beginning, containing approximately **176.00 acres, LESS AND EXCEPT** that portion thereof, if any, located West of the boundary line between the States of Texas and Louisiana as determined by the report of the Special Master and adjudicated by the Supreme Court of the United States in litigation styled **Texas v. Louisiana, et al No. 36 Original**, or as otherwise approved by said court, all as more particularly outlined on a plat on file in the Office of Mineral Resources, Department of Natural Resources. All bearings, distances and coordinates are based on Louisiana Coordinate System of 1927, (North or South Zone), where applicable.

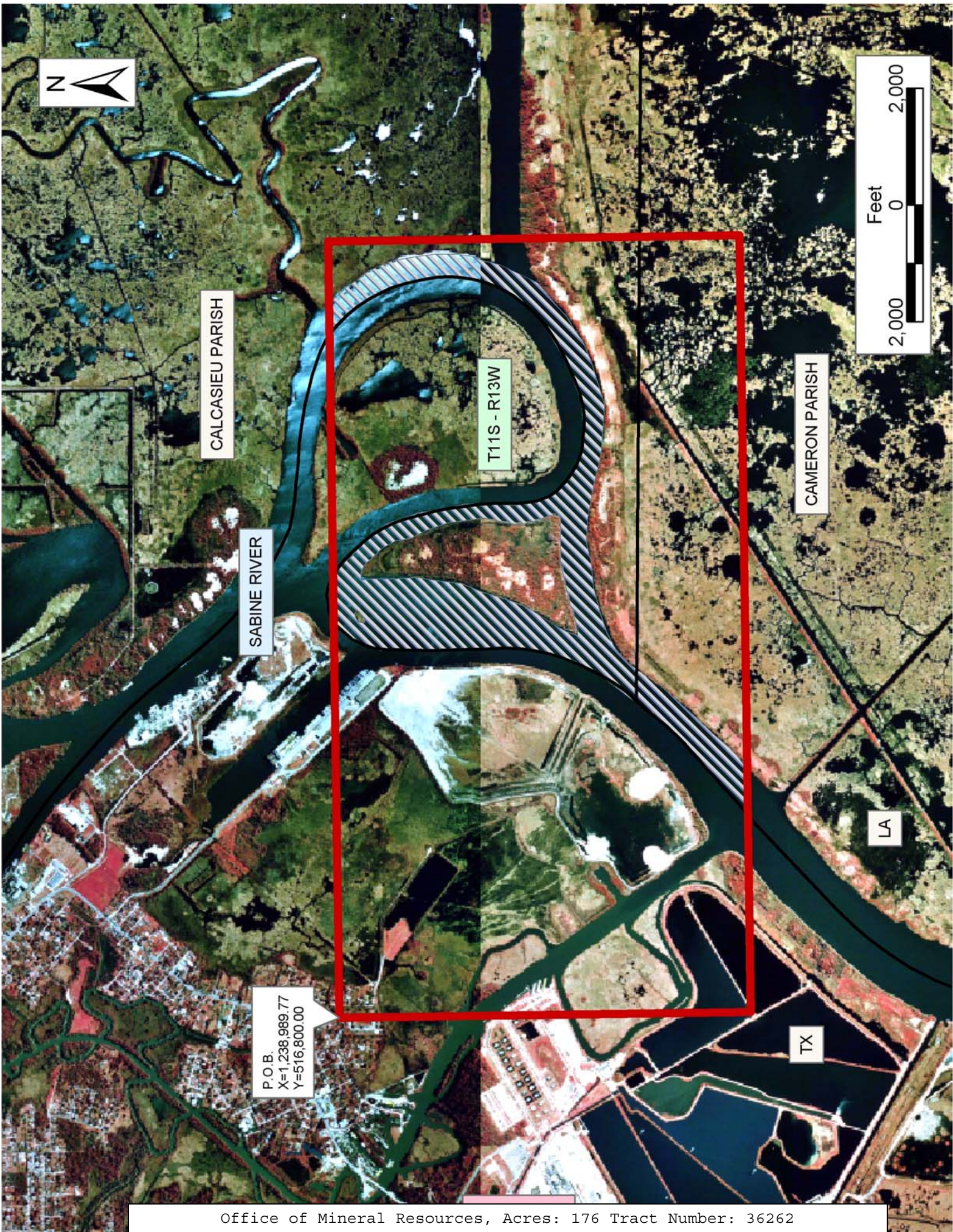
NOTE: The above description of the Tract nominated for lease has been provided and corrected, where required, exclusively by the nomination party. Any mineral lease selected from this Tract and awarded by the Louisiana State Mineral Board shall be without warranty of any kind, either express, implied, or statutory, including, but not limited to, the implied warranties of merchantability and fitness for a particular purpose. Should the mineral lease awarded by the Louisiana State Mineral Board be subsequently modified, cancelled or abrogated due to the existence of conflicting leases, operating agreements, private claims or other future obligations or conditions which may affect all or any portion of the leased Tract, it shall not relieve the Lessee of the obligation to pay any bonus due thereon to the Louisiana State Mineral Board, nor shall the Louisiana State Mineral Board be obligated to refund any consideration paid by the Lessor prior to such modification, cancellation, or abrogation, including, but not limited to, bonuses, rentals and royalties.

NOTE: The State of Louisiana does hereby reserve, and this lease shall be subject to, the imprescriptible right of surface use in the nature of a servitude in favor of the Department of Natural Resources, including its Offices and Commissions, for the sole purpose of implementing, constructing, servicing and maintaining approved coastal zone management and/or restoration projects. Utilization of any and all rights derived under this lease by the mineral lessee, its agents, successors or assigns, shall not interfere with nor hinder the reasonable surface use by the

Department of Natural Resources, its Offices or Commissions, as herein above reserved.

Applicant: Leslie L. Moore

Bidder	Cash Payment	Price/Acre	Rental	Oil	Gas	Other



CALCASIEU PARISH

SABINE RIVER

T11S - R13W

CAMERON PARISH

LA

TX

P.O.B.
X=1,238,989.77
Y=516,800.00

TRACT 36263 - Cameron Parish, Louisiana

All of the lands now or formerly constituting the beds and bottoms of all water bodies of every nature and description the title of which vests in the State of Louisiana, together with all islands arising therein and other lands formed by accretion or by reliction, where allowed by law, excepting tax adjudicated lands, and not presently under mineral lease on May 12, 2004, situated in Cameron Parish, Louisiana, and more particularly described as follows: Beginning at a point having Coordinates of X = 1,227,872.55 and Y = 509,751.85; thence East 16,421.87 feet to a point having Coordinates of X = 1,244,294.42 and Y = 509,751.85; thence South 12,271.85 feet to a point having Coordinates of X = 1,244,294.42 and Y = 497,480.00; thence West 10,766.83 feet to a point having Coordinates of X = 1,233,527.59 and Y = 497,480.00; thence South 1,000.00 feet to the Northeast corner of State Lease No. 17915 having Coordinates of X = 1,233,527.59 and Y = 496,480.00; thence West 1,444.07 feet along the North line of said State Lease No. 17915 to its Northwest corner and the Northeast corner of State Lease No. 17807; thence continue West 4,210.97 along the North line of said State Lease No. 17807 to a point having Coordinates of X = 1,227,872.55 and Y = 496,480.00; thence North 13,271.85 feet to the point of beginning, containing approximately **185.00 acres, LESS AND EXCEPT** that portion thereof, if any, located West of the boundary line between the States of Texas and Louisiana as determined by the report of the Special Master and adjudicated by the Supreme Court of the United States in litigation styled **Texas v. Louisiana, et al No. 36 Original**, or as otherwise approved by said court, all as more particularly outlined on a plat on file in the Office of Mineral Resources, Department of Natural Resources. All bearings, distances and coordinates are based on Louisiana Coordinate System of 1927, (North or South Zone), where applicable.

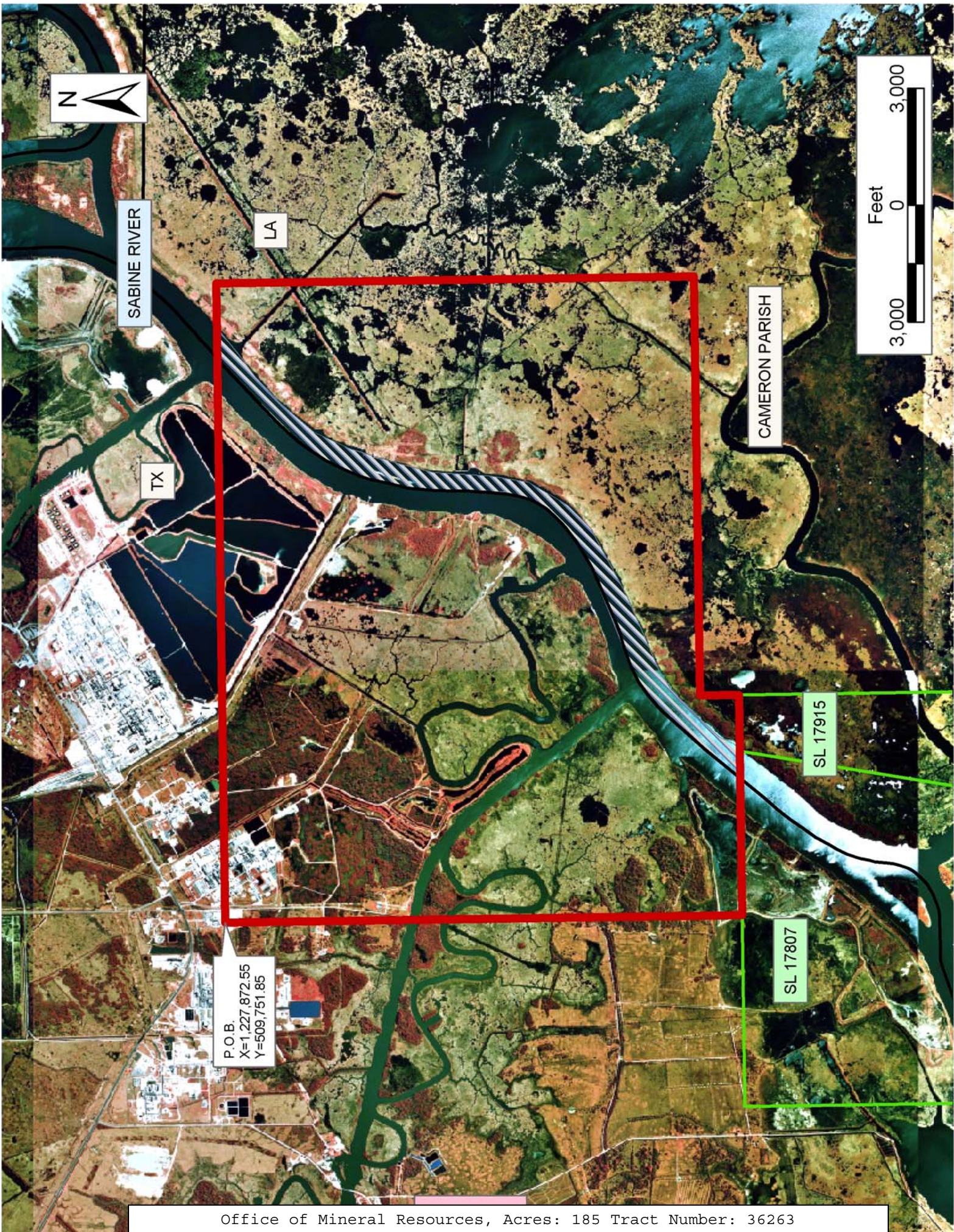
NOTE: The above description of the Tract nominated for lease has been provided and corrected, where required, exclusively by the nomination party. Any mineral lease selected from this Tract and awarded by the Louisiana State Mineral Board shall be without warranty of any kind, either express, implied, or statutory, including, but not limited to, the implied warranties of merchantability and fitness for a particular purpose. Should the mineral lease awarded by the Louisiana State Mineral Board be subsequently modified, cancelled or abrogated due to the existence of conflicting leases, operating agreements, private claims or other future obligations or conditions which may affect all or any portion of the leased Tract, it shall not relieve the Lessee of the obligation to pay any bonus due thereon to the Louisiana State Mineral Board, nor shall the Louisiana State Mineral Board be obligated to refund any consideration paid by the Lessor prior to such modification, cancellation, or abrogation, including, but not limited to, bonuses, rentals and royalties.

NOTE: The State of Louisiana does hereby reserve, and this lease shall be subject to, the imprescriptible right of surface use in the nature of a servitude in favor of the Department of Natural Resources, including its Offices and Commissions, for the sole purpose of implementing,

constructing, servicing and maintaining approved coastal zone management and/or restoration projects. Utilization of any and all rights derived under this lease by the mineral lessee, its agents, successors or assigns, shall not interfere with nor hinder the reasonable surface use by the Department of Natural Resources, its Offices or Commissions, as herein above reserved.

Applicant: Leslie L. Moore

Bidder	Cash Payment	Price/Acre	Rental	Oil	Gas	Other



Office of Mineral Resources, Acres: 185 Tract Number: 36263

TRACT 36264 - Cameron Parish, Louisiana

All of the lands now or formerly constituting the beds and bottoms of all water bodies of every nature and description the title of which vests in the State of Louisiana, together with all islands arising therein and other lands formed by accretion or by reliction, where allowed by law, excepting tax adjudicated lands, and not presently under mineral lease on May 12, 2004, situated in Cameron Parish, Louisiana, and more particularly described as follows: Beginning at a point having Coordinates of X = 1,233,527.59 and Y = 497,480.00; thence East 15,900.00 feet to a point having Coordinates of X = 1,249,427.59 and Y = 497,480.00; thence South 12,800.00 feet to a point having Coordinates of X = 1,249,427.59 and Y = 484,680.00; thence West 5,500.00 feet to a point having Coordinates of X = 1,243,927.59 and Y = 484,680.00; thence North 6,608.35 feet to a point having Coordinates of X = 1,243,927.59 and Y = 491,288.35; thence West 10,400.00 feet to a point on the East line of State Lease No. 17915 having Coordinates of X = 1,233,527.59 and Y = 491,288.35; thence North 5,191.65 feet along the East line of said State Lease No. 17915 to its Northeast corner having Coordinates of X = 1,233,527.59 and Y = 496,480.00; thence continue North 1,000.00 feet to the point of beginning, containing approximately **143.57 acres**, all as more particularly outlined on a plat on file in the Office of Mineral Resources, Department of Natural Resources. All bearings, distances and coordinates are based on Louisiana Coordinate System of 1927, (North or South Zone), where applicable.

NOTE: The above description of the Tract nominated for lease has been provided and corrected, where required, exclusively by the nomination party. Any mineral lease selected from this Tract and awarded by the Louisiana State Mineral Board shall be without warranty of any kind, either express, implied, or statutory, including, but not limited to, the implied warranties of merchantability and fitness for a particular purpose. Should the mineral lease awarded by the Louisiana State Mineral Board be subsequently modified, cancelled or abrogated due to the existence of conflicting leases, operating agreements, private claims or other future obligations or conditions which may affect all or any portion of the leased Tract, it shall not relieve the Lessee of the obligation to pay any bonus due thereon to the Louisiana State Mineral Board, nor shall the Louisiana State Mineral Board be obligated to refund any consideration paid by the Lessor prior to such modification, cancellation, or abrogation, including, but not limited to, bonuses, rentals and royalties.

NOTE: The State of Louisiana does hereby reserve, and this lease shall be subject to, the imprescriptible right of surface use in the nature of a servitude in favor of the Department of Natural Resources, including its Offices and Commissions, for the sole purpose of implementing, constructing, servicing and maintaining approved coastal zone management and/or restoration projects. Utilization of any and all rights derived under this lease by the mineral lessee, its agents, successors or assigns, shall not interfere with nor hinder the reasonable surface use by the

Department of Natural Resources, its Offices or Commissions, as herein above reserved.

Applicant: Leslie L. Moore

Bidder	Cash Payment	Price/Acre	Rental	Oil	Gas	Other



CAMERON PARISH

BLACK BAYOU

LA

P.O.B.
X=1,233,527.59
Y=497,480.00

TX

SL 17915

T13S - R14W

TRACT 36265 - Iberia Parish, Louisiana

All of the lands now or formerly constituting the beds and bottoms of all water bodies of every nature and description the title of which vests in the State of Louisiana, together with all islands arising therein and other lands formed by accretion or by reliction, where allowed by law, excepting tax adjudicated lands, and not presently under mineral lease on May 12, 2004, situated in Iberia Parish, Louisiana, and more particularly described as follows: Beginning at a point having Coordinates of X = 1,802,000.00 and Y = 413,000.00; thence North 10,000.00 feet to a point having Coordinates of X = 1,802,000.00 and Y = 423,000.00; thence East 15,000.00 feet to a point having Coordinates of X = 1,817,000.00 and Y = 423,000.00; thence South 10,000.00 feet to a point having Coordinates of X = 1,817,000.00 and Y = 413,000.00; thence West 15,000.00 feet to the point of beginning, containing approximately **2,471 acres**, all as more particularly outlined on a plat on file in the Office of Mineral Resources, Department of Natural Resources. All bearings, distances and coordinates are based on Louisiana Coordinate System of 1927, (North or South Zone), where applicable.

NOTE: The above description of the Tract nominated for lease has been provided and corrected, where required, exclusively by the nomination party. Any mineral lease selected from this Tract and awarded by the Louisiana State Mineral Board shall be without warranty of any kind, either express, implied, or statutory, including, but not limited to, the implied warranties of merchantability and fitness for a particular purpose. Should the mineral lease awarded by the Louisiana State Mineral Board be subsequently modified, cancelled or abrogated due to the existence of conflicting leases, operating agreements, private claims or other future obligations or conditions which may affect all or any portion of the leased Tract, it shall not relieve the Lessee of the obligation to pay any bonus due thereon to the Louisiana State Mineral Board, nor shall the Louisiana State Mineral Board be obligated to refund any consideration paid by the Lessor prior to such modification, cancellation, or abrogation, including, but not limited to, bonuses, rentals and royalties.

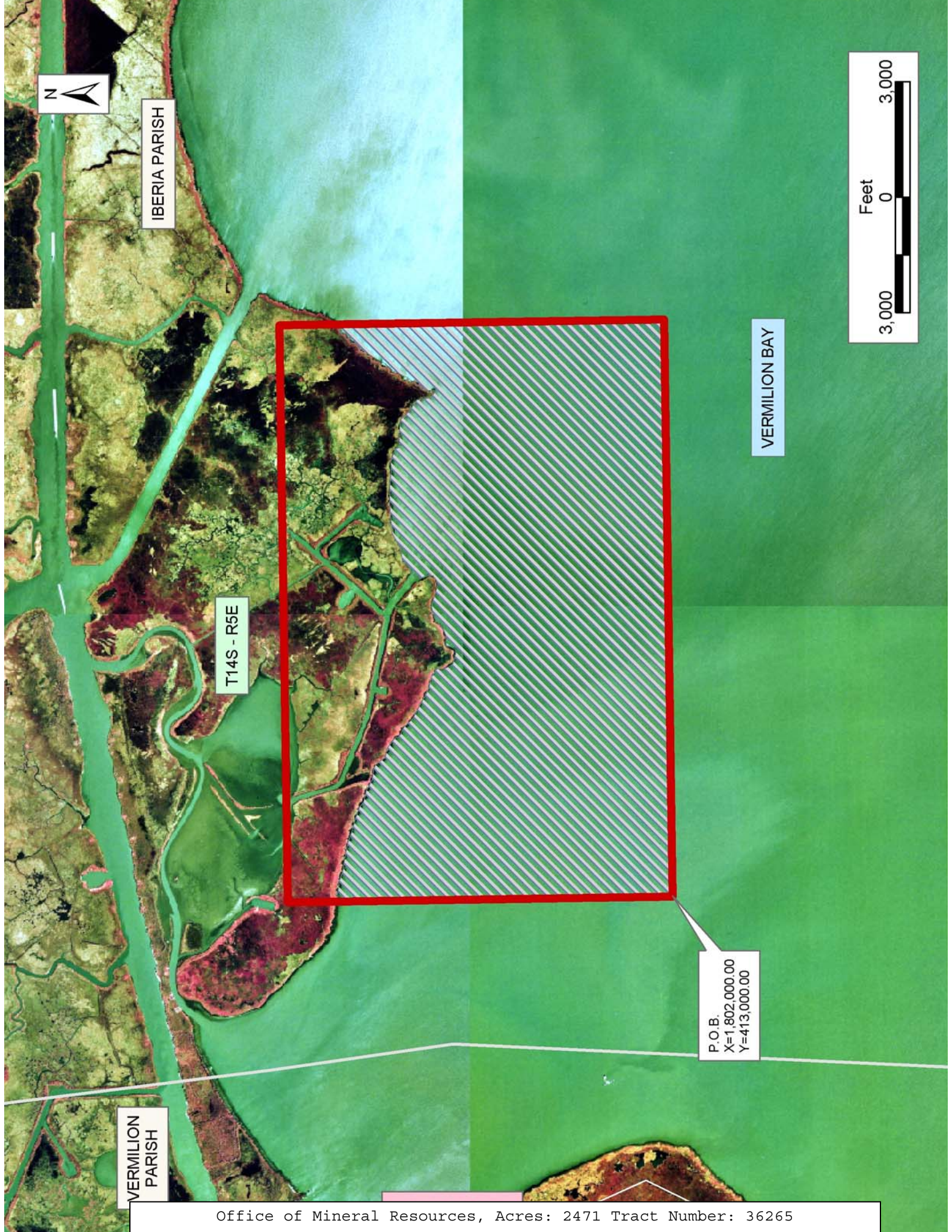
NOTE: The State of Louisiana does hereby reserve, and this lease shall be subject to, the imprescriptible right of surface use in the nature of a servitude in favor of the Department of Natural Resources, including its Offices and Commissions, for the sole purpose of implementing, constructing, servicing and maintaining approved coastal zone management and/or restoration projects. Utilization of any and all rights derived under this lease by the mineral lessee, its agents, successors or assigns, shall not interfere with nor hinder the reasonable surface use by the Department of Natural Resources, its Offices or Commissions, as herein above reserved.

NOTE: The Department of Wildlife and Fisheries has designated certain areas in the coastal waters of the State of Louisiana as Oyster Seed Bed Areas. The exact location of those Seed Bed Areas must be obtained from

the Department of Wildlife and Fisheries and any work done under a mineral lease from the State of Louisiana may necessarily be conducted in conformity with the rules and regulations promulgated by the said Department of Wildlife and Fisheries for Oyster Seed Bed Areas.

Applicant: Kentex Energy L.L.C.

Bidder	Cash Payment	Price/Acre	Rental	Oil	Gas	Other



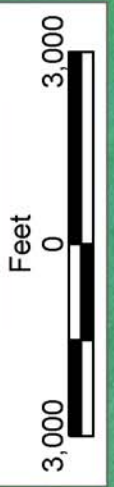
IBERIA PARISH

T14S - R5E

VERMILION BAY

VERMILION PARISH

P.O.B.
X=1,802,000.00
Y=413,000.00



TRACT 36266 - Jefferson Parish, Louisiana

All of the lands now or formerly constituting the beds and bottoms of all water bodies of every nature and description the title of which vests in the State of Louisiana, together with all islands arising therein and other lands formed by accretion or by reliction, where allowed by law, excepting tax adjudicated lands, and not presently under mineral lease on May 12, 2004, situated in Jefferson Parish, Louisiana, and more particularly described as follows: Beginning at a point having Coordinates of X = 2,378,500.00 and Y = 395,160.00; thence West 16,470.72 feet to a point on the Eastern boundary line of State Lease No. 17709 having Coordinates of X = 2,362,029.28 and Y = 395,160.00; thence along the boundary of said State Lease No. 17709 North 12 degrees 44 minutes 05.66 seconds East 225.55 feet to a point having Coordinates of X = 2,362,079.00 and Y = 395,380.00, thence North 39 degrees 25 minutes 09 seconds West 1,838.14 feet to the Northeast corner of said State Lease No. 17709, also being a point on the South line of State Lease No. 17708 having Coordinates of X = 2,360,911.81 and Y = 396,800.00; thence along the boundary of said State Lease No. 17708 East 1,638.20 feet to a point having Coordinates of X = 2,362,550.00 and Y = 396,800.00, thence North 776.30 feet to a point having Coordinates of X = 236,550.00 and Y = 397,576.30, thence East 4,795.00 feet to a point having Coordinates of X = 2,367,345.00 and Y = 397,576.30, thence North 5,644.37 feet to a point having Coordinates of X = 2,367,345.00 and Y = 403,220.67, thence West 2,230.81 feet to a point having Coordinates of X = 2,364,574.19 and Y = 403,220.67, thence North 43 degrees 59 minutes 59.47 seconds West 2,292.80 feet to a point having Coordinates of X = 2,363,265.08 and Y = 404,576.30; thence East 15,234.92 feet to a point having Coordinates of X = 2,378,500.00 and Y = 404,576.30; thence South 9,416.30 feet to the point of beginning, containing approximately **2,014.98 acres**, all as more particularly outlined on a plat on file in the Office of Mineral Resources, Department of Natural Resources. All bearings, distances and coordinates are based on Louisiana Coordinate System of 1927, (North or South Zone), where applicable.

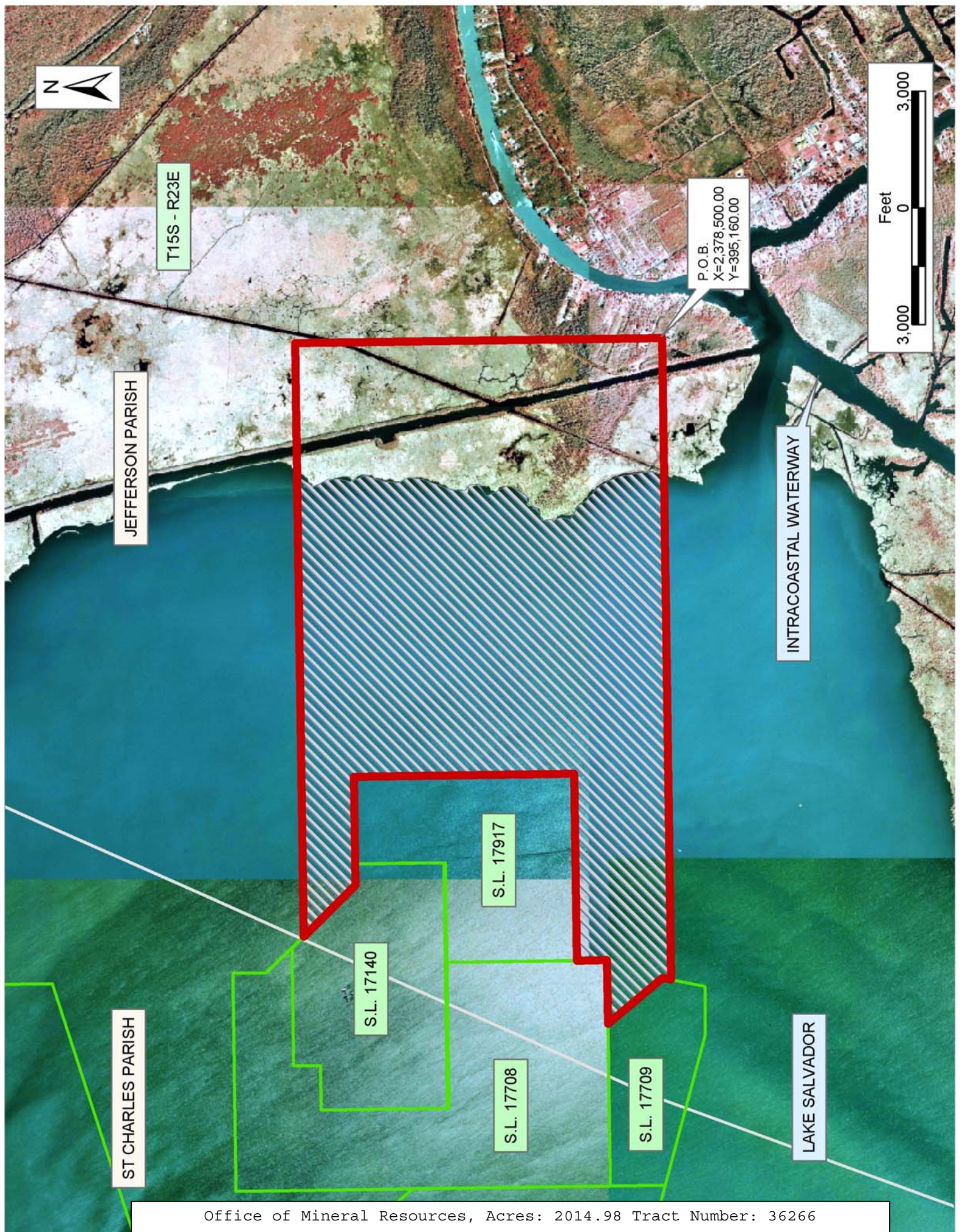
NOTE: The above description of the Tract nominated for lease has been provided and corrected, where required, exclusively by the nomination party. Any mineral lease selected from this Tract and awarded by the Louisiana State Mineral Board shall be without warranty of any kind, either express, implied, or statutory, including, but not limited to, the implied warranties of merchantability and fitness for a particular purpose. Should the mineral lease awarded by the Louisiana State Mineral Board be subsequently modified, cancelled or abrogated due to the existence of conflicting leases, operating agreements, private claims or other future obligations or conditions which may affect all or any portion of the leased Tract, it shall not relieve the Lessee of the obligation to pay any bonus due thereon to the Louisiana State Mineral Board, nor shall the Louisiana State Mineral Board be obligated to refund any consideration

paid by the Lessor prior to such modification, cancellation, or abrogation, including, but not limited to, bonuses, rentals and royalties.

NOTE: The State of Louisiana does hereby reserve, and this lease shall be subject to, the imprescriptible right of surface use in the nature of a servitude in favor of the Department of Natural Resources, including its Offices and Commissions, for the sole purpose of implementing, constructing, servicing and maintaining approved coastal zone management and/or restoration projects. Utilization of any and all rights derived under this lease by the mineral lessee, its agents, successors or assigns, shall not interfere with nor hinder the reasonable surface use by the Department of Natural Resources, its Offices or Commissions, as herein above reserved.

Applicant: Chris Roy

Bidder	Cash Payment	Price/Acre	Rental	Oil	Gas	Other



JEFFERSON PARISH

T15S - R23E

P.O.B.
X=2,378,500.00
Y=395,160.00

INTRACOASTAL WATERWAY



ST CHARLES PARISH

S.L. 17140

S.L. 17917

S.L. 17708

S.L. 17709

LAKE SALVADOR

TRACT 36267 - Assumption Parish, Louisiana

All of the lands now or formerly constituting the beds and bottoms of all water bodies of every nature and description the title of which vests in the State of Louisiana, together with all islands arising therein and other lands formed by accretion or by reliction, where allowed by law, excepting tax adjudicated lands, and not presently under mineral lease on May 12, 2004, situated in Assumption Parish, Louisiana, and more particularly described as follows: Beginning at a point having Coordinates of X = 2,085,205.24 and Y = 399,900.00; thence South 1,684.17 feet to the Northeast corner of State Lease No. 15736, as amended, having Coordinates of X = 2,085,205.24 and Y = 398,215.83; thence along the boundary of said State Lease No. 15736 the following courses: South 69 degrees 25 minutes 42 seconds West 350.73 feet to a point having Coordinates of X = 2,084,876.87 and Y = 398,092.59 and South 70 degrees 35 minutes 49 seconds West 315.96 feet to a point on the Eastern boundary of State Lease No. 3240, as amended, having Coordinates of X = 2,084,578.86 and Y = 397,987.63; thence along the boundary of said State Lease No. 3240 the following courses: North 21 degrees 14 minutes 44 seconds West 96.21 feet to a point having Coordinates of X = 2,084,544.00 and Y = 398,077.30; North 27 degrees 55 minutes 12 seconds West 333.23 feet to a point having Coordinates of X = 2,084,387.97 and Y = 398,371.74; South 69 degrees 39 minutes 50 seconds West 1,118.16 feet to a point having Coordinates of X = 2,083,339.50 and Y = 397,983.15 and South 73 degrees 38 minutes 45 seconds West 635.86 feet to a point on the Northern boundary of said State Lease No. 15736 having Coordinates of X = 2,082,729.37 and Y = 397,804.11; thence along the boundary of said State Lease No. 15736 the following courses: South 75 degrees 27 minutes 11 seconds West 916.02 feet to a point having Coordinates of X = 2,081,842.72 and Y = 397,574.03; South 77 degrees 24 minutes 37 seconds West 896.41 feet to a point having Coordinates of X = 2,080,967.86 and Y = 397,378.64; South 74 degrees 19 minutes 28 seconds West 518.01 feet to a point having Coordinates of X = 2,080,469.12 and Y = 397,238.68 and South 67 degrees 57 minutes 21 seconds West 178.83 feet to a point having Coordinates of X = 2,080,303.36 and Y = 397,171.56; thence North 2,728.44 feet to a point having Coordinates of X = 2,080,303.36 and Y = 399,900.00; thence East 4,901.88 feet to the point of beginning, containing approximately **26 acres**, all as more particularly outlined on a plat on file in the Office of Mineral Resources, Department of Natural Resources. All bearings, distances and coordinates are based on Louisiana Coordinate System of 1927, (North or South Zone), where applicable.

NOTE: The above description of the Tract nominated for lease has been provided and corrected, where required, exclusively by the nomination party. Any mineral lease selected from this Tract and awarded by the Louisiana State Mineral Board shall be without warranty of any kind, either express, implied, or statutory, including, but not limited to, the implied warranties of merchantability and fitness for a particular purpose. Should the mineral lease awarded by the Louisiana State Mineral Board be subsequently modified, cancelled or abrogated due to the

existence of conflicting leases, operating agreements, private claims or other future obligations or conditions which may affect all or any portion of the leased Tract, it shall not relieve the Lessee of the obligation to pay any bonus due thereon to the Louisiana State Mineral Board, nor shall the Louisiana State Mineral Board be obligated to refund any consideration paid by the Lessor prior to such modification, cancellation, or abrogation, including, but not limited to, bonuses, rentals and royalties.

NOTE: The State of Louisiana does hereby reserve, and this lease shall be subject to, the imprescriptible right of surface use in the nature of a servitude in favor of the Department of Natural Resources, including its Offices and Commissions, for the sole purpose of implementing, constructing, servicing and maintaining approved coastal zone management and/or restoration projects. Utilization of any and all rights derived under this lease by the mineral lessee, its agents, successors or assigns, shall not interfere with nor hinder the reasonable surface use by the Department of Natural Resources, its Offices or Commissions, as herein above reserved.

Applicant: E & E Exploration

Bidder	Cash Payment	Price/Acre	Rental	Oil	Gas	Other



P.O.B.
X=2,085,205.24
Y=399,900.00



ASSUMPTION PARISH

T15S - R14E

SL 3240

SL 15736

T15S - R13E

BAYOU SHERMAN