

**TRACT 36255 - Portion of Block 42, South Pass Area, Plaquemines Parish, Louisiana**

The beds and bottoms of all water bodies belonging to the State of Louisiana located in that portion of Block 42, South Pass Area, together with any present lands formed by accretion to the shoreline, located in Plaquemines Parish, Louisiana, and not presently under mineral lease on May 12, 2004, the geographical area of which is more fully described as follows: Beginning at the Northwest corner of Block 42, South Pass Area having Coordinates of X = 2,615,928.00 and Y = 96,908.00; thence East 6,688.86 feet on the North line of said Block 42 to the Northwest corner of State Lease No. 16991 having Coordinates of X = 2,622,616.86 and Y = 96,908.00; thence South 38 degrees 51 minutes 34 seconds West 5,879.48 feet on the boundary of said State Lease No. 16991 to a corner having Coordinates of X = 2,618,928.00 and Y = 92,329.72; thence South 38 degrees 51 minutes 34 seconds West 3,826.60 feet to the Southeast corner of State Lease No. 12967, as amended having Coordinates of X = 2,616,527.14 and Y = 89,350.00; thence along the boundary of said State Lease No. 12967 the following courses: North 2,640.00 feet and West 599.14 feet to its Northwest corner and a point on the West line of said Block 42 having Coordinates of X = 2,615,928.00 and Y = 91,990.00; thence North 4,918.00 feet on the West line of said Block 42 to the point of beginning, containing approximately **595.95 acres**, all as more particularly outlined on a plat on file in the Office of Mineral Resources, Department of Natural Resources. All bearings, distances and coordinates are based on Louisiana Coordinate System of 1927, (North or South Zone).

NOTE: The above description of the Tract nominated for lease has been provided and corrected, where required, exclusively by the nomination party. Any mineral lease selected from this Tract and awarded by the Louisiana State Mineral Board shall be without warranty of any kind, either express, implied, or statutory, including, but not limited to, the implied warranties of merchantability and fitness for a particular purpose. Should the mineral lease awarded by the Louisiana State Mineral Board be subsequently modified, cancelled or abrogated due to the existence of conflicting leases, operating agreements, private claims or other future obligations or conditions which may affect all or any portion of the leased Tract, it shall not relieve the Lessee of the obligation to pay any bonus due thereon to the Louisiana State Mineral Board, nor shall the Louisiana State Mineral Board be obligated to refund any consideration paid by the Lessor prior to such modification, cancellation, or abrogation, including, but not limited to, bonuses, rentals and royalties.

NOTE: The State of Louisiana does hereby reserve, and this lease shall be subject to, the imprescriptible right of surface use in the nature of a servitude in favor of the Department of Natural Resources, including its Offices and Commissions, for the sole purpose of implementing, constructing, servicing and maintaining approved coastal zone management and/or restoration projects. Utilization of any and all rights derived under this lease by the mineral lessee, its agents, successors or assigns,

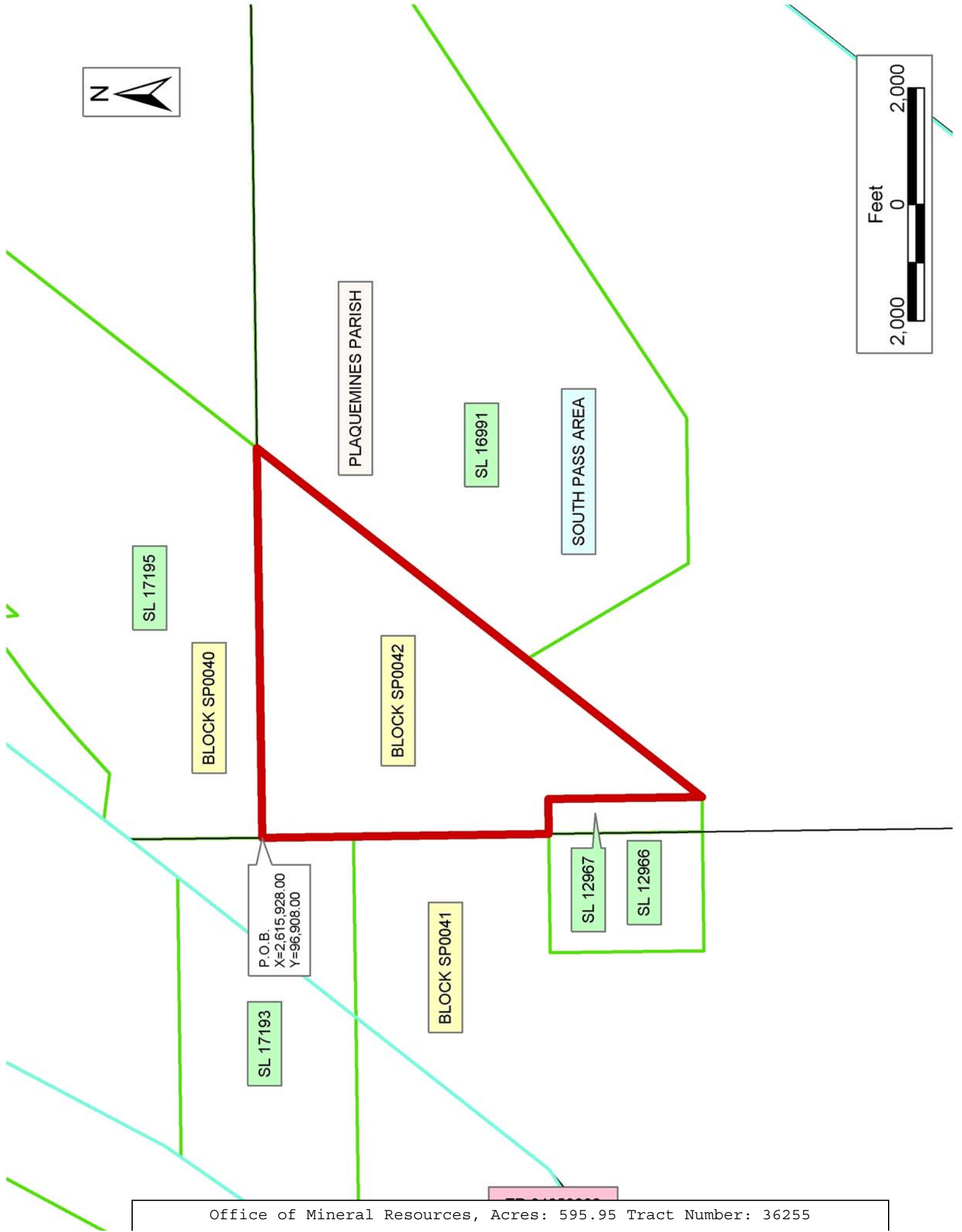
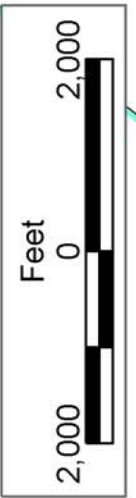
shall not interfere with nor hinder the reasonable surface use by the Department of Natural Resources, its Offices or Commissions, as herein above reserved.

NOTE: It appears, according to our records, that a portion of this Tract is located within the restrictive safety fairway area as set out by the Corps of Engineers, U.S. Army and/or the restrictive anchorage area as set out by the U.S. Coast Guard.

NOTE: The Department of Wildlife and Fisheries has designated certain areas in the coastal waters of the State of Louisiana as Oyster Seed Bed Areas. The exact location of those Seed Bed Areas must be obtained from the Department of Wildlife and Fisheries and any work done under a mineral lease from the State of Louisiana may necessarily be conducted in conformity with the rules and regulations promulgated by the said Department of Wildlife and Fisheries for Oyster Seed Bed Areas.

Applicant: Angelle & Donohue Oil & Gas Properties, Inc.

Bidder	Cash Payment	Price/ Acre	Rental	Oil	Gas	Other



**TRACT 36256 - Portion of Block 42, South Pass Area, Plaquemines Parish, Louisiana**

The beds and bottoms of all water bodies belonging to the State of Louisiana located in that portion of Block 42, South Pass Area, together with any present lands formed by accretion to the shoreline, located in Plaquemines Parish, Louisiana, and not presently under mineral lease on May 12, 2004, the geographical area of which is more fully described as follows: Beginning at a point on the East line of Block 42, South Pass Area and the Northeast corner of State Lease No. 17199 having Coordinates of X = 2,630,686.00 and Y = 90,729.00; thence along the boundary of said State Lease No. 17199 the following courses: West 3,503.52 feet and South 1,200.00 feet to its Southwest corner and a point on the North line of State Lease No. 16869 having Coordinates of X = 2,627,182.68 and Y = 89,529.00; thence West 1,646.68 feet on the North line of said State Lease No. 16869 to its Northwest corner and the Northeast corner of State Lease No. 17197 having Coordinates of X = 2,625,536.00 and Y = 89,529.00; thence West 2,496.00 feet on the North line of said State Lease No. 17197 to the most Southerly Southeast corner of State Lease No. 16991 having Coordinates of X = 2,623,040.00 and Y = 89,529.00; thence North 57 degrees 19 minutes 29 seconds East 9,083.53 feet on the boundary of said State Lease No. 16991 to its most Northerly Southeast corner and a point on the East line of said Block 42 having Coordinates of X = 2,630,686.00 and Y = 94,433.00; thence South 3,704.00 feet on the East line of said Block 42 to the point of beginning, containing approximately **333.88 acres**, all as more particularly outlined on a plat on file in the Office of Mineral Resources, Department of Natural Resources. All bearings, distances and coordinates are based on Louisiana Coordinate System of 1927, (North or South Zone).

NOTE: The above description of the Tract nominated for lease has been provided and corrected, where required, exclusively by the nomination party. Any mineral lease selected from this Tract and awarded by the Louisiana State Mineral Board shall be without warranty of any kind, either express, implied, or statutory, including, but not limited to, the implied warranties of merchantability and fitness for a particular purpose. Should the mineral lease awarded by the Louisiana State Mineral Board be subsequently modified, cancelled or abrogated due to the existence of conflicting leases, operating agreements, private claims or other future obligations or conditions which may affect all or any portion of the leased Tract, it shall not relieve the Lessee of the obligation to pay any bonus due thereon to the Louisiana State Mineral Board, nor shall the Louisiana State Mineral Board be obligated to refund any consideration paid by the Lessor prior to such modification, cancellation, or abrogation, including, but not limited to, bonuses, rentals and royalties.

NOTE: The State of Louisiana does hereby reserve, and this lease shall be subject to, the imprescriptible right of surface use in the nature of a servitude in favor of the Department of Natural Resources, including its Offices and Commissions, for the sole purpose of implementing,

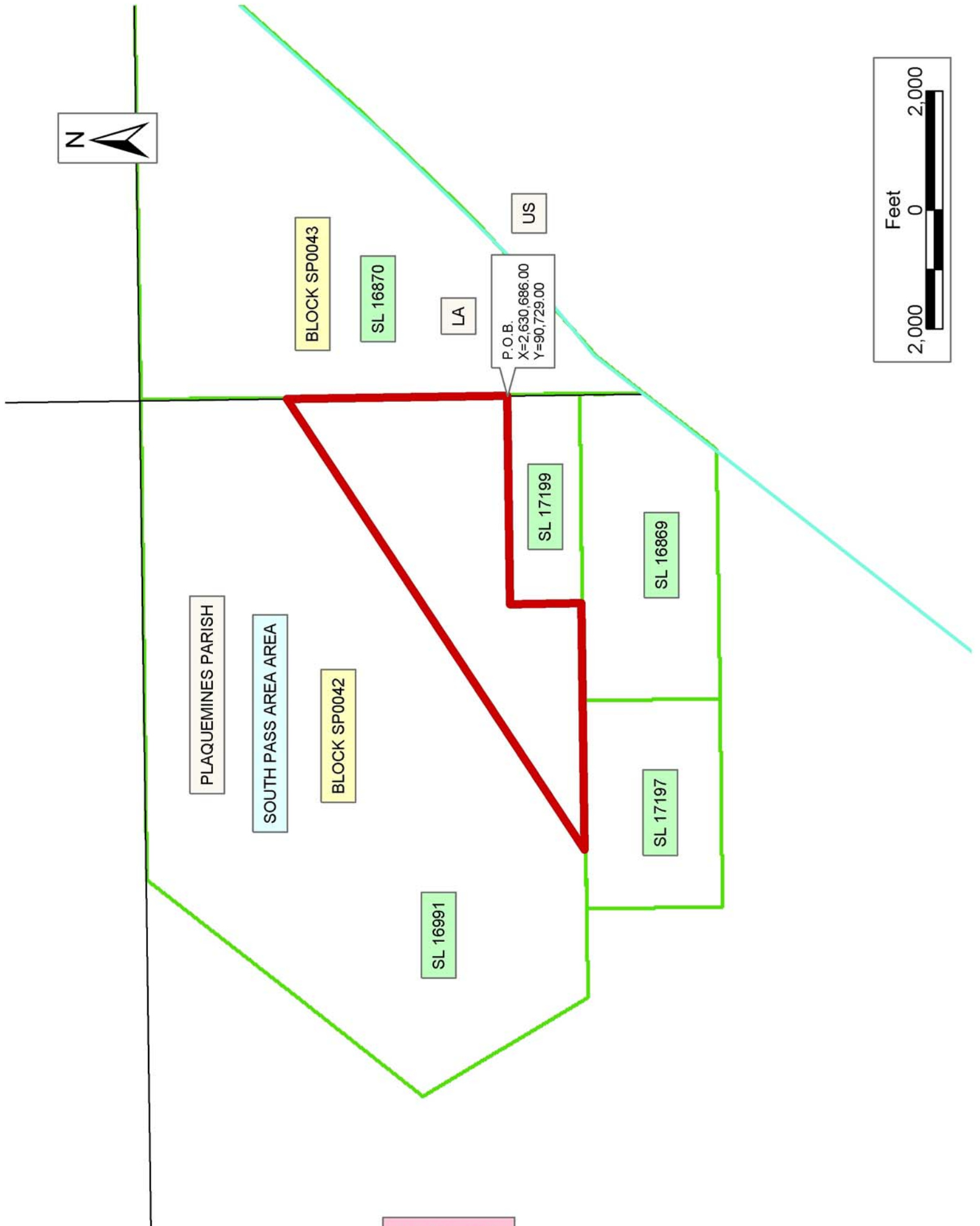
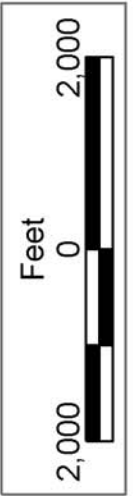
constructing, servicing and maintaining approved coastal zone management and/or restoration projects. Utilization of any and all rights derived under this lease by the mineral lessee, its agents, successors or assigns, shall not interfere with nor hinder the reasonable surface use by the Department of Natural Resources, its Offices or Commissions, as herein above reserved.

NOTE: It appears, according to our records, that a portion of this Tract is located within the restrictive safety fairway area as set out by the Corps of Engineers, U.S. Army and/or the restrictive anchorage area as set out by the U.S. Coast Guard.

NOTE: The Department of Wildlife and Fisheries has designated certain areas in the coastal waters of the State of Louisiana as Oyster Seed Bed Areas. The exact location of those Seed Bed Areas must be obtained from the Department of Wildlife and Fisheries and any work done under a mineral lease from the State of Louisiana may necessarily be conducted in conformity with the rules and regulations promulgated by the said Department of Wildlife and Fisheries for Oyster Seed Bed Areas.

Applicant: Angelle & Donohue Oil & Gas Properties, Inc.

Bidder	Cash Payment	Price/ Acre	Rental	Oil	Gas	Other



**TRACT 36257 - Portion of Block 41, South Pass Area, Plaquemines Parish, Louisiana**

The beds and bottoms of all water bodies belonging to the State of Louisiana located in that portion of Block 41, South Pass Area, together with any present lands formed by accretion to the shoreline, located in Plaquemines Parish, Louisiana, and not presently under mineral lease on May 12, 2004, the geographical area of which is more fully described as follows: Beginning at a point on the West line of Block 41, South Pass Area, having Coordinates of X = 2,605,477.93 and Y = 91,244.00; thence East 8,409.21 feet to a point on the West line of State Lease No. 12966, as amended having Coordinates of X = 2,613,887.14 and Y = 91,244.00; thence along the boundary of said State Lease No. 12966 the following courses: South 1,894.00 feet and East 2,040.86 feet to the Southeast corner of said State Lease No. 12966, also being a point on the East line of said Block 41 having Coordinates of X = 2,615,928.00 and Y = 89,350.00; thence South 7,200.00 feet along the East line of said Block 41 to its Southeast corner having Coordinates of X = 2,615,928.00 and Y = 82,150.00; thence West 3,900.00 feet along the South line of said Block 41 to the Southeast corner of State Lease No. 15238, as amended, having Coordinates of X = 2,612,028.00 and Y = 82,150.00; thence North 674.15 feet on the East line of said State Lease No. 15238 to its Northeast corner and the Southeast corner of State Lease No. 13262, as amended having Coordinates of X = 2,612,028.00 and Y = 82,824.15; thence North 2,925.85 feet on the East line of said State Lease No. 13262 to its Northeast corner and the Southeast corner of State Lease No. 12729, as amended having Coordinates of X = 2,612,028.00 and Y = 85,750.00; thence along the boundary of said State Lease No. 12729 the following courses: North 1,623.34 feet and South 56 degrees 42 minutes 37 seconds West 2,957.60 feet to its Southwest corner and the Northwest corner of said State Lease No. 13262 having Coordinates of X = 2,609,555.72 and Y = 85,750.00; thence South 56 degrees 42 minutes 37 seconds West 1,651.74 feet on the West line of said State Lease No. 13262 to its Southwest corner and the most Northerly corner of said State Lease No. 15238 having Coordinates of X = 2,608,175.02 and Y = 84,843.40; thence along the boundary of said State Lease No. 15238 the following courses: South 56 degrees 42 minutes 37 seconds West 1,269.99 feet and South 43 degrees 48 minutes 08 seconds East 2,766.04 feet to its Southwest corner and a point on the South line of said Block 41 having Coordinates of X = 2,609,028.00 and Y = 82,150.00; thence West 3,550.07 feet along the South line of said Block 41 to its Southwest corner having Coordinates of X = 2,605,477.93 and Y = 82,150.00; thence North 9,094.00 feet along the West line of said Block 41 to the point of beginning, LESS AND EXCEPT, if any, Operating Agreement No. 232 that may lie within the above described tract, containing approximately **1,729.52 acres**, all as more particularly outlined on a plat on file in the Office of Mineral Resources, Department of Natural Resources. All bearings, distances and coordinates are based on Louisiana Coordinate System of 1927, (North or South Zone).

NOTE: The above description of the Tract nominated for lease has been provided and corrected, where required, exclusively by the nomination party. Any mineral lease selected from this Tract and awarded by the Louisiana State Mineral Board shall be without warranty of any kind, either express, implied, or statutory, including, but not limited to, the implied warranties of merchantability and fitness for a particular purpose. Should the mineral lease awarded by the Louisiana State Mineral Board be subsequently modified, cancelled or abrogated due to the existence of conflicting leases, operating agreements, private claims or other future obligations or conditions which may affect all or any portion of the leased Tract, it shall not relieve the Lessee of the obligation to pay any bonus due thereon to the Louisiana State Mineral Board, nor shall the Louisiana State Mineral Board be obligated to refund any consideration paid by the Lessor prior to such modification, cancellation, or abrogation, including, but not limited to, bonuses, rentals and royalties.

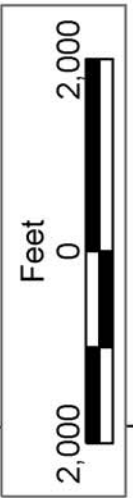
NOTE: The State of Louisiana does hereby reserve, and this lease shall be subject to, the imprescriptible right of surface use in the nature of a servitude in favor of the Department of Natural Resources, including its Offices and Commissions, for the sole purpose of implementing, constructing, servicing and maintaining approved coastal zone management and/or restoration projects. Utilization of any and all rights derived under this lease by the mineral lessee, its agents, successors or assigns, shall not interfere with nor hinder the reasonable surface use by the Department of Natural Resources, its Offices or Commissions, as herein above reserved.

NOTE: It appears, according to our records, that a portion of this Tract is located within the restrictive safety fairway area as set out by the Corps of Engineers, U.S. Army and/or the restrictive anchorage area as set out by the U.S. Coast Guard.

Applicant: Angelle & Donohue Oil & Gas Properties, Inc.

Bidder	Cash Payment	Price/ Acre	Rental	Oil	Gas	Other





PLAQUEMINES PARISH

SL 17381

SL 12966

SL 12967

SOUTH PASS AREA

BLOCK SP0041

SL 12729

SL 13262

SL 15238

BLOCK SP0058

P.O.B.  
X=2,605,477.93  
Y=91,244.00

AO 0232

WEST DELTA AREA

BLOCK WD0084

BLOCK SP0042