

**TRACT 36245 - Portion of Block 18, West Delta Area, Plaquemines Parish, Louisiana**

The beds and bottoms of all water bodies belonging to the State of Louisiana located in that portion of Block 18, West Delta Area, together with any present lands formed by accretion to the shoreline, located in Plaquemines Parish, Louisiana, and not presently under mineral lease on May 12, 2004, the geographical area of which is more fully described as follows: Beginning at a point on the East line of Block 18, West Delta Area, having Coordinates of X = 2,517,972.00 and Y = 197,202.60; thence South 5,562.99 feet along said East line of, to its intersection with the Three Mile Decree Line, having Coordinates X = 2,517,972.00 and Y = 191,639.61; thence Southwesterly 10,625.68 feet along said Three Mile Decree Line to its intersection with the West line of said Block 18 having Coordinates of X = 2,507,522.00 and Y = 189,715.42; thence North 7,487.18 feet along said West line, to a point having Coordinates of X = 2,507,522.00 and Y = 197,202.60; thence East 10,450.00 feet to the point of beginning, containing approximately **1,565.36 acres, LESS AND EXCEPT** that portion thereof, if any, lying seaward of the line three nautical miles from the coast line of Louisiana, as said three mile line has been decreed by the Supreme Court of the United States, as determined by a Special Master appointed therein, in litigation styled **United States v. State of Louisiana et al No. 9 Original**, in 1975, all as more particularly outlined on a plat in the Office of Mineral Resources, Department of Natural Resources. All bearings, distances and coordinates are based on the Louisiana Coordinate System of 1927, (South Zone).

NOTE: The above description of the Tract nominated for lease has been provided and corrected, where required, exclusively by the nomination party. Any mineral lease selected from this Tract and awarded by the Louisiana State Mineral Board shall be without warranty of any kind, either express, implied, or statutory, including, but not limited to, the implied warranties of merchantability and fitness for a particular purpose. Should the mineral lease awarded by the Louisiana State Mineral Board be subsequently modified, cancelled or abrogated due to the existence of conflicting leases, operating agreements, private claims or other future obligations or conditions which may affect all or any portion of the leased Tract, it shall not relieve the Lessee of the obligation to pay any bonus due thereon to the Louisiana State Mineral Board, nor shall the Louisiana State Mineral Board be obligated to refund any consideration paid by the Lessor prior to such modification, cancellation, or abrogation, including, but not limited to, bonuses, rentals and royalties.

NOTE: The State of Louisiana does hereby reserve, and this lease shall be subject to, the imprescriptible right of surface use in the nature of a servitude in favor of the Department of Natural Resources, including its Offices and Commissions, for the sole purpose of implementing, constructing, servicing and maintaining approved coastal zone management and/or restoration projects. Utilization of any and all rights derived under this lease by the mineral lessee, its agents, successors or assigns,

shall not interfere with nor hinder the reasonable surface use by the Department of Natural Resources, its Offices or Commissions, as herein above reserved.

Applicant: Suncoast Land Services, Inc.

Bidder	Cash Payment	Price/Acre	Rental	Oil	Gas	Other



PLAQUEMINES PARISH

BLOCK WD0019

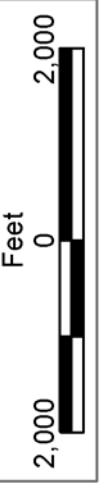
P.O.B.  
X=2,517,972.00  
Y=197,202.60

BLOCK WD0018

WEST DELTA AREA

BLOCK WD0017

LOUISIANA  
UNITED STATES



**TRACT 36246 - Portion of Block 19, West Delta Area, Plaquemines Parish, Louisiana**

The beds and bottoms of all water bodies belonging to the State of Louisiana located in that portion of Block 19, West Delta Area, together with any present lands formed by accretion to the shoreline, located in Plaquemines Parish, Louisiana, and not presently under mineral lease on May 12, 2004, the geographical area of which is more fully described as follows: Beginning at the East boundary line of Block 19, West Delta Area, having Coordinates of X = 2,528,422.00 and Y = 197,202.60; thence along the East boundary line of said Block 19, South 3,638.81 feet to a point being the intersection of said East boundary line of Block 19 and the Three Mile Decree Line having Coordinates of X = 2,528,422.00 and Y = 193,563.80; thence 10,625.68 feet Southwesterly along said Three Mile Decree Line to a point being the intersection of said Three Mile Decree Line and the West boundary line of Block 19 having Coordinates of X = 2,517,972.00 and Y = 191,639.61; thence along the West boundary line of Block 19, North 5,563 feet to a point having Coordinates of X = 2,517,972.01 and Y = 197,202.60; thence East 10,450.00 feet to the point of beginning, containing approximately **1,103.75 acres, LESS AND EXCEPT** that portion thereof, if any, lying seaward of the line three nautical miles from the coast line of Louisiana, as said three mile line has been decreed by the Supreme Court of the United States, as determined by a Special Master appointed therein, in litigation styled **United States v. State of Louisiana et al No. 9 Original**, in 1975, all as more particularly outlined on a plat in the Office of Mineral Resources, Department of Natural Resources. All bearings, distances and coordinates are based on the Louisiana Coordinate System of 1927, (South Zone).

NOTE: The above description of the Tract nominated for lease has been provided and corrected, where required, exclusively by the nomination party. Any mineral lease selected from this Tract and awarded by the Louisiana State Mineral Board shall be without warranty of any kind, either express, implied, or statutory, including, but not limited to, the implied warranties of merchantability and fitness for a particular purpose. Should the mineral lease awarded by the Louisiana State Mineral Board be subsequently modified, cancelled or abrogated due to the existence of conflicting leases, operating agreements, private claims or other future obligations or conditions which may affect all or any portion of the leased Tract, it shall not relieve the Lessee of the obligation to pay any bonus due thereon to the Louisiana State Mineral Board, nor shall the Louisiana State Mineral Board be obligated to refund any consideration paid by the Lessor prior to such modification, cancellation, or abrogation, including, but not limited to, bonuses, rentals and royalties.

NOTE: The State of Louisiana does hereby reserve, and this lease shall be subject to, the imprescriptible right of surface use in the nature of a servitude in favor of the Department of Natural Resources, including its Offices and Commissions, for the sole purpose of implementing, constructing, servicing and maintaining approved coastal zone management

and/or restoration projects. Utilization of any and all rights derived under this lease by the mineral lessee, its agents, successors or assigns, shall not interfere with nor hinder the reasonable surface use by the Department of Natural Resources, its Offices or Commissions, as herein above reserved.

Applicant: Suncoast Land Services, Inc.

Bidder	Cash Payment	Price/Acre	Rental	Oil	Gas	Other



BLOCK WD0020

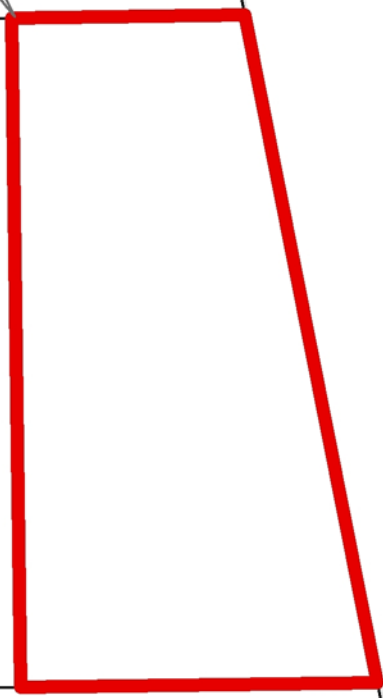
BLOCK WD0019

WEST DELTA AREA

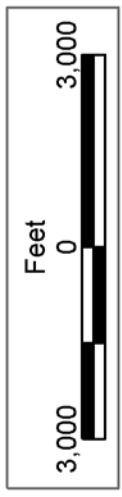
BLOCK WD0018

PLAQUEMINES PARISH

P.O.B.  
X=2,528,422.00  
Y=197,202.60



LOUISIANA  
UNITED STATES



**TRACT 36247 - Portion of Block 20, West Delta Area, Plaquemines Parish, Louisiana**

The beds and bottoms of all water bodies belonging to the State of Louisiana located in that portion of Block 20, West Delta Area, together with any present lands formed by accretion to the shoreline, located in Plaquemines Parish, Louisiana, and not presently under mineral lease on May 12, 2004, the geographical area of which is more fully described as follows: Beginning at a point being on the East boundary line of Block 20, West Delta Area, having Coordinates of X = 2,538,872.00 and Y = 197,202.60; thence along the East boundary line of said Block 20, South 1,714.61 feet to a point being the intersection of said East boundary line of Block 20 and the Three Mile Decree Line having Coordinates of X = 2,538,872.00 and Y = 195,487.99; thence 10,625.68 feet Southwesterly along said Three Mile Decree Line to a point being the intersection of said Three Mile Decree Line and the West boundary line of said Block 20 having Coordinates X = 2,528,422.00 and Y = 193,563.80; thence continuing along the West boundary line of said Block 20, North 3,638.80 feet to a point that is on the West boundary of said Block 20 having the Coordinates X = 2,528,422.00 and Y = 197,202.60; thence East 10,450.00 feet to the point of beginning, containing approximately **642.14 acres, LESS AND EXCEPT** that portion thereof, if any, lying seaward of the line three nautical miles from the coast line of Louisiana, as said three mile line has been decreed by the Supreme Court of the United States, as determined by a Special Master appointed therein, in litigation styled **United States v. State of Louisiana et al No. 9 Original**, in 1975, all as more particularly outlined on a plat in the Office of Mineral Resources, Department of Natural Resources. All bearings, distances and coordinates are based on the Louisiana Coordinate System of 1927, (South Zone).

NOTE: The above description of the Tract nominated for lease has been provided and corrected, where required, exclusively by the nomination party. Any mineral lease selected from this Tract and awarded by the Louisiana State Mineral Board shall be without warranty of any kind, either express, implied, or statutory, including, but not limited to, the implied warranties of merchantability and fitness for a particular purpose. Should the mineral lease awarded by the Louisiana State Mineral Board be subsequently modified, cancelled or abrogated due to the existence of conflicting leases, operating agreements, private claims or other future obligations or conditions which may affect all or any portion of the leased Tract, it shall not relieve the Lessee of the obligation to pay any bonus due thereon to the Louisiana State Mineral Board, nor shall the Louisiana State Mineral Board be obligated to refund any consideration paid by the Lessor prior to such modification, cancellation, or abrogation, including, but not limited to, bonuses, rentals and royalties.

NOTE: The State of Louisiana does hereby reserve, and this lease shall be subject to, the imprescriptible right of surface use in the nature of a servitude in favor of the Department of Natural Resources, including its Offices and Commissions, for the sole purpose of implementing,

constructing, servicing and maintaining approved coastal zone management and/or restoration projects. Utilization of any and all rights derived under this lease by the mineral lessee, its agents, successors or assigns, shall not interfere with nor hinder the reasonable surface use by the Department of Natural Resources, its Offices or Commissions, as herein above reserved.

Applicant: Suncoast Land Services, Inc.

Bidder	Cash Payment	Price/Acre	Rental	Oil	Gas	Other





PLAQUEMINES PARISH

S.L. 17872

BLOCK WD0021

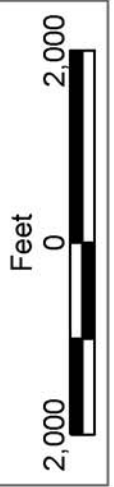
P.O.B.  
X=2,538,872.00  
Y=197,202.60

BLOCK WD0020

WEST DELTA AREA

BLOCK WD0019

LOUISIANA  
UNITED STATES



**TRACT 36248 - Portion of Block 26, West Delta Area, Plaquemines Parish, Louisiana**

The beds and bottoms of all water bodies belonging to the State of Louisiana located in that portion of Block 26, West Delta Area, together with any present lands formed by accretion to the shoreline, located in Plaquemines Parish, Louisiana, and not presently under mineral lease on May 12, 2004, the geographical area of which is more fully described as follows: Beginning at the Northeast corner of Block 26, West Delta Area having Coordinates of X = 2,591,122.00 and Y = 180,603.33; thence South 10,424.22 feet along the East line of said Block 26 to a point having Coordinates of X = 2,591,122.00 and Y = 170,179.11; thence Northwesterly on an arc having a radius of 18,240.60 feet and a center at X = 2,606,370.00 feet and Y = 180,190.00 feet to a point having Coordinates of X = 2,590,016.00 feet and Y = 172,111.00 feet; thence North 26 degrees 17 minutes 30 seconds West 2,810.77 feet to a point having Coordinates of X = 2,588,771.00 feet and Y = 174,631.00; thence Northwesterly on an arc having a radius of 18,240.60 feet and a center at X = 2,605,125.00 feet and Y = 182,710.00 feet to a point having Coordinates of X = 2,587,979.00, and Y = 176,487.00 feet; thence Northwesterly on an arc having a radius of 18,240.60 feet and a center at X = 2,604,220.00 feet and Y = 184,790.00 feet to a point having Coordinates of X = 2,587,325.00, and Y = 177,913.00 feet; thence North 22 degrees 08 minutes 57 seconds West 2,294.31 feet to a point having Coordinates of X = 2,586,460.00 and Y = 180,038.00; thence Northwesterly on an arc having a radius of 18,240.60 feet and a center at X = 2,603,355.00 feet and Y = 186,915.00 feet to a point having Coordinates of X = 2,585,856.00, and Y = 181,767.00 feet; thence Northwesterly on an arc having a radius of 18,240.60 feet and a center at X = 2,602,425.00 feet and Y = 189,395.00 feet to a point having Coordinates of X = 2,585,513.00 feet, and Y = 182,560.00 feet; thence North 21 degrees 59 minutes 48 seconds West 544.65 feet to a point having Coordinates of X = 2,585,309.00 and Y = 183,065.00; thence North 26 degrees 44 minutes 30 seconds West 580.04 feet to a point having Coordinates of X = 2,585,048.00 and Y = 183,583.00; thence North 34 degrees 33 minutes 40 seconds West 1,459.58 feet to a point having Coordinates of X = 2,584,220.00 and Y = 184,785.00; thence North 44 degrees 34 minutes 54 seconds West 2,212.00 feet to a point having Coordinates of X = 2,582,667.34 and Y = 186,360.50; thence East 3,894.20 feet to a point having Coordinates of X = 2,586,561.54 and Y = 186,360.50; thence South 29 degrees 15 minutes 08 seconds East 5,536.74 feet to a point having Coordinates of X = 2,589,267.10 and Y = 181,529.82; thence South 63 degrees 27 minutes 31 seconds East 2,073.41 feet to the point of beginning, **LESS AND EXCEPT**, State Lease No. 192, as amended, that may lie within the above described tract, containing approximately **1,078.83 acres**, **LESS AND EXCEPT** that portion thereof, if any, lying seaward of the line three nautical miles from the coast line of Louisiana, as said three mile line has been decreed by the Supreme Court of the United States, as determined by a Special Master appointed therein, in litigation styled **United States v. State of Louisiana et al No. 9 Original**, in 1975, all as more particularly outlined on a plat in the Office of Mineral Resources,

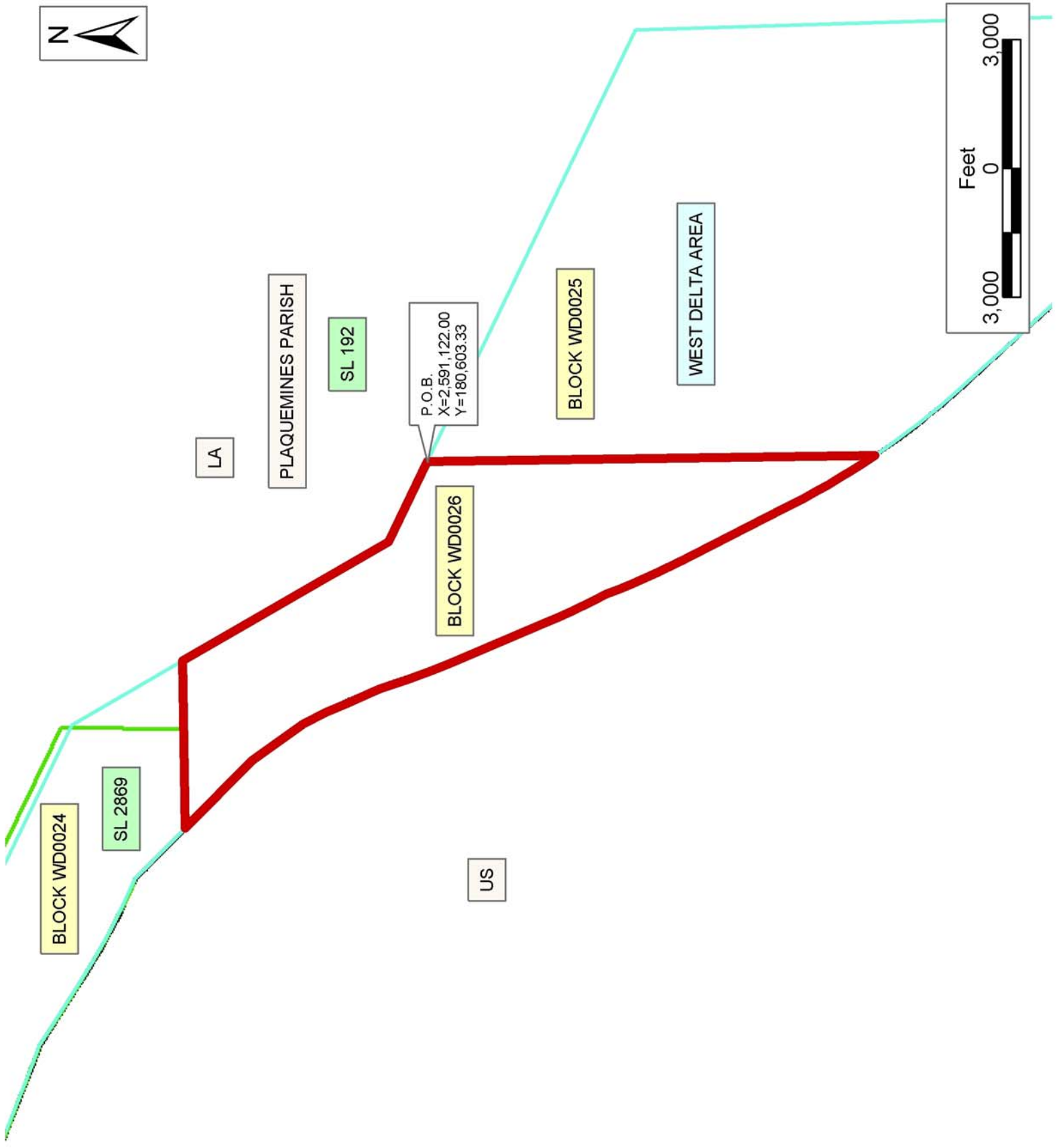
Department of Natural Resources. All bearings, distances and coordinates are based on the Louisiana Coordinate System of 1927, (South Zone).

NOTE: The above description of the Tract nominated for lease has been provided and corrected, where required, exclusively by the nomination party. Any mineral lease selected from this Tract and awarded by the Louisiana State Mineral Board shall be without warranty of any kind, either express, implied, or statutory, including, but not limited to, the implied warranties of merchantability and fitness for a particular purpose. Should the mineral lease awarded by the Louisiana State Mineral Board be subsequently modified, cancelled or abrogated due to the existence of conflicting leases, operating agreements, private claims or other future obligations or conditions which may affect all or any portion of the leased Tract, it shall not relieve the Lessee of the obligation to pay any bonus due thereon to the Louisiana State Mineral Board, nor shall the Louisiana State Mineral Board be obligated to refund any consideration paid by the Lessor prior to such modification, cancellation, or abrogation, including, but not limited to, bonuses, rentals and royalties.

NOTE: The State of Louisiana does hereby reserve, and this lease shall be subject to, the imprescriptible right of surface use in the nature of a servitude in favor of the Department of Natural Resources, including its Offices and Commissions, for the sole purpose of implementing, constructing, servicing and maintaining approved coastal zone management and/or restoration projects. Utilization of any and all rights derived under this lease by the mineral lessee, its agents, successors or assigns, shall not interfere with nor hinder the reasonable surface use by the Department of Natural Resources, its Offices or Commissions, as herein above reserved.

Applicant: Melissa D. Powell

Bidder	Cash Payment	Price/Acre	Rental	Oil	Gas	Other



**TRACT 36249 - Portion of Block 25, West Delta Area, Plaquemines Parish, Louisiana**

The beds and bottoms of all water bodies belonging to the State of Louisiana located in that portion of Block 25, West Delta Area, together with any present lands formed by accretion to the shoreline, located in Plaquemines Parish, Louisiana, and not presently under mineral lease on May 12, 2004, the geographical area of which is more fully described as follows: Beginning at the Northwest corner of Block 25, West Delta Area having Coordinates of X = 2,591,122.00 and Y = 180,603.33; thence South 63 degrees 27 minutes 31 seconds East 9,060.02 feet to a point having Coordinates of X = 2,599,227.20 and Y = 176,554.90; thence West 49.34 feet to a point on the North line of State Lease A00258 having Coordinates of X = 2,599,177.86 and Y = 176,554.90; thence West 2,305.00 feet on the said North line of State Lease A00258 to a point being the Northwest corner of said Operating Agreement No. 258 having Coordinates of X = 2,596,872.86 and Y = 176,554.90; thence South 00 degrees 01 minutes 10 seconds West 2,551.57 feet along the West line of said Operating Agreement No. 258 to a point being the Southwest corner of said Operating Agreement No. 258 and the Northwest corner of State Lease No. 10090 having Coordinates of X = 2,596,872.00 and Y = 174,003.33; thence South 8,484.93 feet along the West line of said State Lease No. 10090 to a point being the Southwest corner of said State Lease No. 10090 having Coordinates of X = 2,596,872.00 and Y = 165,518.40; thence West 1,806.41 feet to a point having Coordinates of X = 2,595,065.59 and Y = 165,518.40; thence Northwesterly on an arc having a radius of 18,240.60 feet and a center at X = 2,607,710.00 feet and Y = 178,665.00 feet to a point having Coordinates of X = 2,594,008.00 feet and Y = 166,625.00 feet; thence North 41 degrees 18 minutes 19 seconds West 2,030.08 feet to a point having Coordinates of X = 2,592,668.00 and Y = 168,150.00; thence Northwesterly on an arc having a radius of 18,240.60 feet and a center at X = 2,606,370.00 feet and Y = 180,190.00 feet to a point having Coordinates of X = 2,591,122.00 feet and Y = 170,179.11 feet; thence North 10,424.22 feet to the point of beginning, containing approximately **1,635.29 acres, LESS AND EXCEPT** that portion thereof, if any, lying seaward of the line three nautical miles from the coast line of Louisiana, as said three mile line has been decreed by the Supreme Court of the United States, as determined by a Special Master appointed therein, in litigation styled **United States v. State of Louisiana et al No. 9 Original**, in 1975, all as more particularly outlined on a plat in the Office of Mineral Resources, Department of Natural Resources. All bearings, distances and coordinates are based on the Louisiana Coordinate System of 1927, (South Zone).

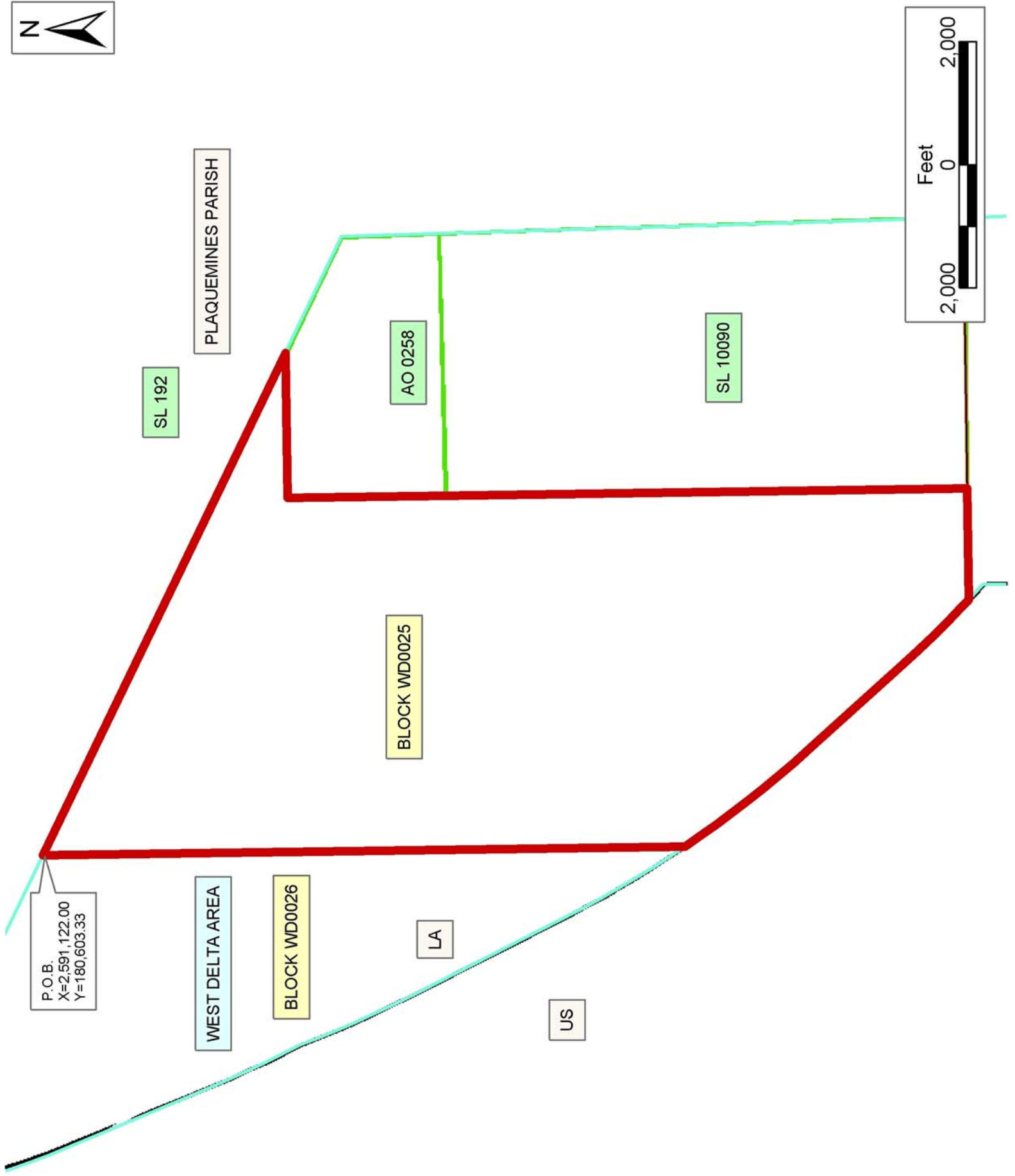
NOTE: The above description of the Tract nominated for lease has been provided and corrected, where required, exclusively by the nomination party. Any mineral lease selected from this Tract and awarded by the Louisiana State Mineral Board shall be without warranty of any kind, either express, implied, or statutory, including, but not limited to, the implied warranties of merchantability and fitness for a particular purpose. Should the mineral lease awarded by the Louisiana State Mineral

Board be subsequently modified, cancelled or abrogated due to the existence of conflicting leases, operating agreements, private claims or other future obligations or conditions which may affect all or any portion of the leased Tract, it shall not relieve the Lessee of the obligation to pay any bonus due thereon to the Louisiana State Mineral Board, nor shall the Louisiana State Mineral Board be obligated to refund any consideration paid by the Lessor prior to such modification, cancellation, or abrogation, including, but not limited to, bonuses, rentals and royalties.

NOTE: The State of Louisiana does hereby reserve, and this lease shall be subject to, the imprescriptible right of surface use in the nature of a servitude in favor of the Department of Natural Resources, including its Offices and Commissions, for the sole purpose of implementing, constructing, servicing and maintaining approved coastal zone management and/or restoration projects. Utilization of any and all rights derived under this lease by the mineral lessee, its agents, successors or assigns, shall not interfere with nor hinder the reasonable surface use by the Department of Natural Resources, its Offices or Commissions, as herein above reserved.

Applicant: Melissa D. Powell

Bidder	Cash Payment	Price/Acre	Rental	Oil	Gas	Other



P.O.B.  
X=2,591,122.00  
Y=180,603.33



**TRACT 36250 - Portion of Blocks 27, and 38, South Pass Area, Plaquemines Parish, Louisiana**

The beds and bottoms of all water bodies belonging to the State of Louisiana located in that portion of Blocks 27, and 38, South Pass Area, together with any present lands formed by accretion to the shoreline, located in Plaquemines Parish, Louisiana, and not presently under mineral lease on May 12, 2004, the geographical area of which is more fully described as follows: Beginning at a point on the West line of Block 27, South Pass Area, also being the Southwest corner of State Lease No. 1011, as amended having Coordinates of X = 2,645,444.00 and Y = 121,225.00; thence along the boundary of said State Lease No. 1011 the following courses: East 8,885.32 feet, South 20 degrees 46 minutes 56 seconds West 2,331.71 feet and East 3,195.12 feet to a point on the South line of said State Lease No. 1011 having Coordinates of X = 2,656,697.12 and Y = 119,045.00; thence Southwesterly on a straight line to a point having Coordinates of X = 2,656,605 and Y = 119,022; thence Southwesterly on an arc having a radius of 18,240.60 feet and a center at X = 2,641,835 and Y = 129,725 to a point having Coordinates of X = 2,656,150 and Y = 118,421; thence Southwesterly on a straight line to a point having Coordinates of X = 2,653,860 and Y = 115,521; thence Southwesterly on an arc having a radius of 18,240.60 feet and a center at X = 2,639,545 and Y = 126,825 to a point on the South line of said Block 27, also being a point on the North line of Block 38, South Pass Area, having Coordinates of X = 2,649,690.16 and Y = 111,666.00; thence Southwesterly on an arc having a radius of 18,240.60 feet and a center at X = 2,639,545 and Y = 126,825 to a point having Coordinates of X = 2,648,682 and Y = 111,038; thence Southwesterly on a straight line to a point having Coordinates of X = 2,648,610 and Y = 110,974; thence Southwesterly on a straight line to a point having Coordinates of X = 2,648,531 and Y = 110,887; thence Southwesterly on a straight line to a point having Coordinates of X = 2,646,419 and Y = 107,265; thence Southwesterly on an arc having a radius of 18,240.60 feet and a center at X = 2,630,660 and Y = 116,450 to a point having Coordinates of X = 2,646,250 and Y = 106,981; thence Southwesterly on a straight line to a point on the West line of said Block 38 having Coordinates of X = 2,645,444.00 and Y = 105,653.95; thence North 6,012.05 feet along the West line of said Block 38 to its Northwest corner, also being the Southwest corner of said Block 27 having Coordinates of X = 2,645,444.00 and Y = 111,666.00; thence North 9,559.00 feet along the West line of said Block 27 to the point of beginning, containing approximately **2,048.98 acres, LESS AND EXCEPT** that portion thereof, if any, lying seaward of the line three nautical miles from the coast line of Louisiana, as said three mile line has been decreed by the Supreme Court of the United States, as determined by a Special Master appointed therein, in litigation styled **United States v. State of Louisiana et al No. 9 Original**, in 1975, all as more particularly outlined on a plat in the Office of Mineral Resources, Department of Natural Resources. All bearings, distances and coordinates are based on the Louisiana Coordinate System of 1927, (South Zone).



NOTE: The above description of the Tract nominated for lease has been provided and corrected, where required, exclusively by the nomination party. Any mineral lease selected from this Tract and awarded by the Louisiana State Mineral Board shall be without warranty of any kind, either express, implied, or statutory, including, but not limited to, the implied warranties of merchantability and fitness for a particular purpose. Should the mineral lease awarded by the Louisiana State Mineral Board be subsequently modified, cancelled or abrogated due to the existence of conflicting leases, operating agreements, private claims or other future obligations or conditions which may affect all or any portion of the leased Tract, it shall not relieve the Lessee of the obligation to pay any bonus due thereon to the Louisiana State Mineral Board, nor shall the Louisiana State Mineral Board be obligated to refund any consideration paid by the Lessor prior to such modification, cancellation, or abrogation, including, but not limited to, bonuses, rentals and royalties.

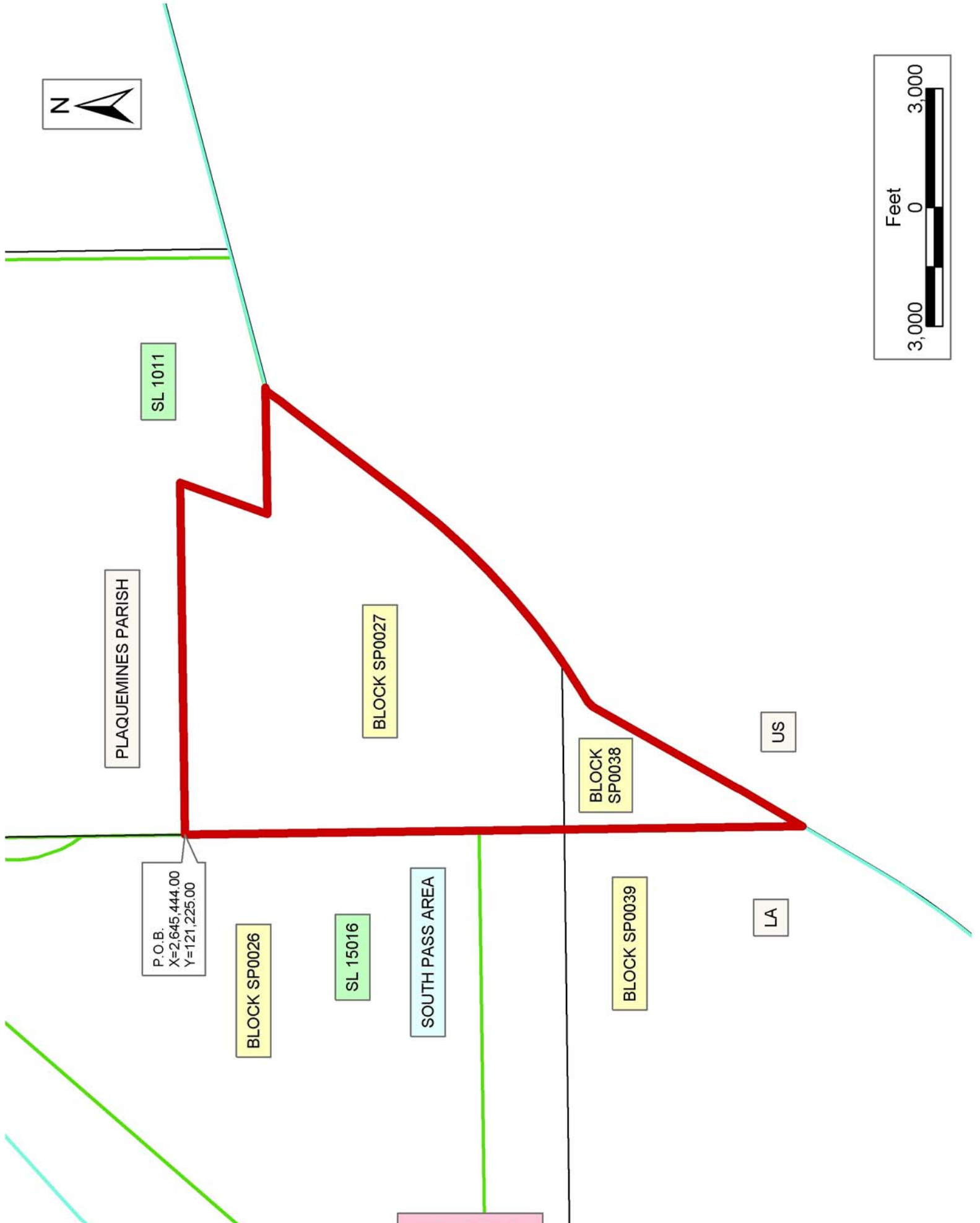
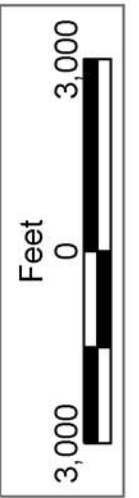
NOTE: The Office of Mineral Resources will require a minimum bonus of \$200 per acre and a minimum royalty of 21%.

NOTE: The State of Louisiana does hereby reserve, and this lease shall be subject to, the imprescriptible right of surface use in the nature of a servitude in favor of the Department of Natural Resources, including its Offices and Commissions, for the sole purpose of implementing, constructing, servicing and maintaining approved coastal zone management and/or restoration projects. Utilization of any and all rights derived under this lease by the mineral lessee, its agents, successors or assigns, shall not interfere with nor hinder the reasonable surface use by the Department of Natural Resources, its Offices or Commissions, as herein above reserved.

NOTE: The Department of Wildlife and Fisheries has designated certain areas in the coastal waters of the State of Louisiana as Oyster Seed Bed Areas. The exact location of those Seed Bed Areas must be obtained from the Department of Wildlife and Fisheries and any work done under a mineral lease from the State of Louisiana may necessarily be conducted in conformity with the rules and regulations promulgated by the said Department of Wildlife and Fisheries for Oyster Seed Bed Areas.

Bidder	Cash Payment	Price/Acre	Rental	Oil	Gas	Other

Applicant: Angelle & Donohue Oil & Gas Properties, Inc.



P.O.B.  
X=2,645,444.00  
Y=121,225.00

SL 1011

PLAQUEMINES PARISH

BLOCK SP0026

SL 15016

SOUTH PASS AREA

BLOCK SP0027

BLOCK SP0038

BLOCK SP0039

LA

US

**TRACT 36251 - Portion of Blocks 26, and 39, South Pass Area, Plaquemines Parish, Louisiana**

The beds and bottoms of all water bodies belonging to the State of Louisiana located in that portion of Blocks 26, and 39, South Pass Area, together with any present lands formed by accretion to the shoreline, located in Plaquemines Parish, Louisiana, and not presently under mineral lease on May 12, 2004, the geographical area of which is more fully described as follows: Beginning at a point on the West line of Block 39, South Pass Area, having Coordinates of X = 2,630,686.00 and Y = 105,772.00; thence North 5,894.00 feet along the West line of Block 30 to its Northwest corner having Coordinates of X = 2,630,686.00 and Y = 111,666.00; thence East 4,563.10 feet along the North line of said Block 39 to a point, and a point on the South line of Block 26, also being the Southeast corner of State Lease No. 17203 having Coordinates of X = 2,635,249.10 and Y = 111,666.00; thence North 2,147.13 feet along the East line of said State Lease No. 17203 to a point, also being the Southwest corner of State Lease No. 15016 having Coordinates of X = 2,635,249.10 and Y = 113,813.13; thence East 10,194.90 feet along the South line of said State Lease No. 15016 to its Southeast corner, also being a point on the East line of said Block 26 having Coordinates of X = 2,645,444.00 and Y = 113,813.13; thence South 2,147.13 feet along the East line of said Block 26 to its Southeast corner, also being the Northeast corner of said Block 39 having Coordinates of X = 2,645,444.00 and Y = 111,666.00; thence South 5,894.00 feet along the East line of said Block 39 to a point having Coordinates of X = 2,645,444.00 and Y = 105,772.00; thence West 14,758.00 feet to the point of beginning, containing approximately **2,499.39 acres**, all as more particularly outlined on a plat on file in the Office of Mineral Resources, Department of Natural Resources. All bearings, distances and coordinates are based on Louisiana Coordinate System of 1927, (North or South Zone).

NOTE: The above description of the Tract nominated for lease has been provided and corrected, where required, exclusively by the nomination party. Any mineral lease selected from this Tract and awarded by the Louisiana State Mineral Board shall be without warranty of any kind, either express, implied, or statutory, including, but not limited to, the implied warranties of merchantability and fitness for a particular purpose. Should the mineral lease awarded by the Louisiana State Mineral Board be subsequently modified, cancelled or abrogated due to the existence of conflicting leases, operating agreements, private claims or other future obligations or conditions which may affect all or any portion of the leased Tract, it shall not relieve the Lessee of the obligation to pay any bonus due thereon to the Louisiana State Mineral Board, nor shall the Louisiana State Mineral Board be obligated to refund any consideration paid by the Lessor prior to such modification, cancellation, or abrogation, including, but not limited to, bonuses, rentals and royalties.

NOTE: The Office of Mineral Resources will require a minimum bonus of \$200 per acre and a minimum royalty of 21%.

NOTE: The State of Louisiana does hereby reserve, and this lease shall be subject to, the imprescriptible right of surface use in the nature of a servitude in favor of the Department of Natural Resources, including its Offices and Commissions, for the sole purpose of implementing, constructing, servicing and maintaining approved coastal zone management and/or restoration projects. Utilization of any and all rights derived under this lease by the mineral lessee, its agents, successors or assigns, shall not interfere with nor hinder the reasonable surface use by the Department of Natural Resources, its Offices or Commissions, as herein above reserved.

NOTE: The Department of Wildlife and Fisheries has designated certain areas in the coastal waters of the State of Louisiana as Oyster Seed Bed Areas. The exact location of those Seed Bed Areas must be obtained from the Department of Wildlife and Fisheries and any work done under a mineral lease from the State of Louisiana may necessarily be conducted in conformity with the rules and regulations promulgated by the said Department of Wildlife and Fisheries for Oyster Seed Bed Areas.

Applicant: Angelle & Donohue Oil & Gas Properties, Inc.

Bidder	Cash Payment	Price/Acre	Rental	Oil	Gas	Other



PLAQUEMINES PARISH

SOUTH PASS AREA

SL 15016

SL 17203

BLOCK SP0026

BLOCK SP0038

LA

US

BLOCK SP0039

BLOCK SP0040

SL 17194

P.O.B.  
X=2,630,686.00  
Y=105,772.00



**TRACT 36252 - Portion of Block 39, South Pass Area, Plaquemines Parish, Louisiana**

The beds and bottoms of all water bodies belonging to the State of Louisiana located in that portion of Block 39, South Pass Area, together with any present lands formed by accretion to the shoreline, located in Plaquemines Parish, Louisiana, and not presently under mineral lease on May 12, 2004, the geographical area of which is more fully described as follows: Beginning at the Southwest corner of Block 39, South Pass Area, having Coordinates of X = 2,630,686.00 and Y = 96,908.00; thence North 8,864.00 feet along the West line of said Block 39 to a point having Coordinates of X = 2,630,686.00 and Y = 105,772.00; thence East 14,758.00 feet to a point on the East line of said Block 39 having Coordinates of X = 2,645,444.00 and Y = 105,772.00; thence South 118.05 feet along the East line of said Block 39 to a point having Coordinates of X = 2,645,444.00 and Y = 105,653.95; thence Southwesterly on a straight line to a point having Coordinates of X = 2,644,270 and Y = 103,721; thence Southwesterly on an arc having a radius of 18,240.60 feet and a center at X = 2,628,680 and Y = 113,190 to a point having Coordinates of X = 2,642,494 and Y = 101,278; thence Southwesterly on a straight line to a point having Coordinates of X = 2,640,182 and Y = 98,597; thence Southwesterly on an arc having a radius of 18,240.60 feet and a center at X = 2,624,995 and Y = 108,700 to a point on the South line of said Block 39 having Coordinates of X = 2,638,911.47 and Y = 96,908.00; thence West 8,225.47 feet along the South line of said Block 39 to the point of beginning, containing approximately **2,383.92 acres, LESS AND EXCEPT** that portion thereof, if any, lying seaward of the line three nautical miles from the coast line of Louisiana, as said three mile line has been decreed by the Supreme Court of the United States, as determined by a Special Master appointed therein, in litigation styled **United States v. State of Louisiana et al No. 9 Original**, in 1975, all as more particularly outlined on a plat in the Office of Mineral Resources, Department of Natural Resources. All bearings, distances and coordinates are based on the Louisiana Coordinate System of 1927, (South Zone).

NOTE: The above description of the Tract nominated for lease has been provided and corrected, where required, exclusively by the nomination party. Any mineral lease selected from this Tract and awarded by the Louisiana State Mineral Board shall be without warranty of any kind, either express, implied, or statutory, including, but not limited to, the implied warranties of merchantability and fitness for a particular purpose. Should the mineral lease awarded by the Louisiana State Mineral Board be subsequently modified, cancelled or abrogated due to the existence of conflicting leases, operating agreements, private claims or other future obligations or conditions which may affect all or any portion of the leased Tract, it shall not relieve the Lessee of the obligation to pay any bonus due thereon to the Louisiana State Mineral Board, nor shall the Louisiana State Mineral Board be obligated to refund any consideration paid by the Lessor prior to such modification, cancellation, or abrogation, including, but not limited to, bonuses, rentals and royalties.

NOTE: The Office of Mineral Resources will require a minimum bonus of \$200 per acre and a minimum royalty of 21%.

NOTE: The State of Louisiana does hereby reserve, and this lease shall be subject to, the imprescriptible right of surface use in the nature of a servitude in favor of the Department of Natural Resources, including its Offices and Commissions, for the sole purpose of implementing, constructing, servicing and maintaining approved coastal zone management and/or restoration projects. Utilization of any and all rights derived under this lease by the mineral lessee, its agents, successors or assigns, shall not interfere with nor hinder the reasonable surface use by the Department of Natural Resources, its Offices or Commissions, as herein above reserved.

NOTE: It appears, according to our records, that a portion of this Tract is located within the restrictive safety fairway area as set out by the Corps of Engineers, U.S. Army and/or the restrictive anchorage area as set out by the U.S. Coast Guard.

NOTE: The Department of Wildlife and Fisheries has designated certain areas in the coastal waters of the State of Louisiana as Oyster Seed Bed Areas. The exact location of those Seed Bed Areas must be obtained from the Department of Wildlife and Fisheries and any work done under a mineral lease from the State of Louisiana may necessarily be conducted in conformity with the rules and regulations promulgated by the said Department of Wildlife and Fisheries for Oyster Seed Bed Areas.

Applicant: Angelle & Donohue Oil & Gas Properties, Inc.

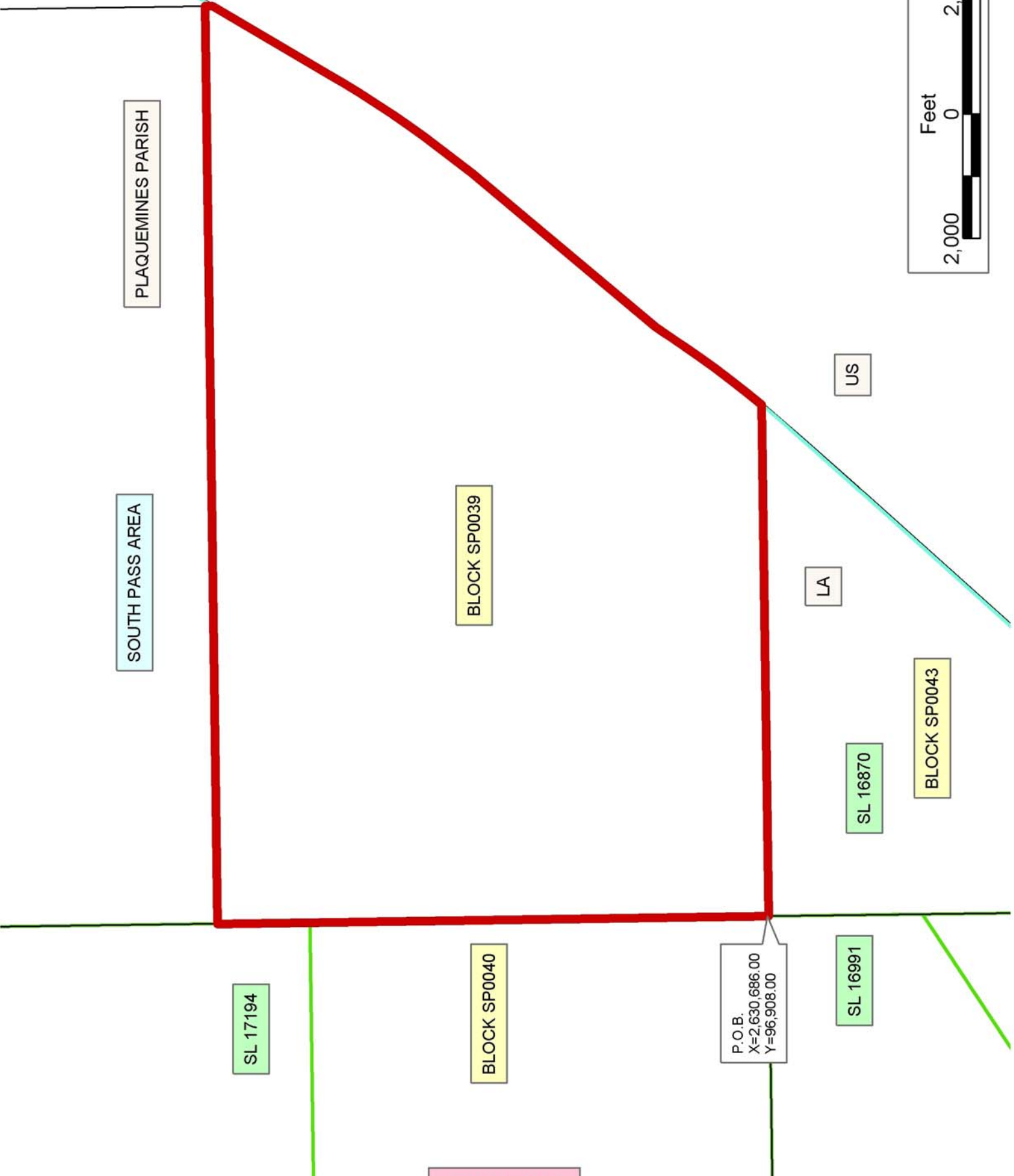
Bidder	Cash Payment	Price/Acre	Rental	Oil	Gas	Other





PLAQUEMINES PARISH

SOUTH PASS AREA



P.O.B.  
X=2,630,686.00  
Y=96,908.00

**TRACT 36253 - Portion of Block 40, South Pass Area, Plaquemines Parish, Louisiana**

The beds and bottoms of all water bodies belonging to the State of Louisiana located in that portion of Block 40, South Pass Area, together with any present lands formed by accretion to the shoreline, located in Plaquemines Parish, Louisiana, and not presently under mineral lease on May 12, 2004, the geographical area of which is more fully described as follows: Beginning at the Southeast corner of Block 40, South Pass Area, having Coordinates of X = 2,630,686.00 and Y = 96,908.00; thence West 8,069.14 feet along the South line of said Block 40 to a point, also being the Southeast corner of State Lease No. 17195 having Coordinates of X = 2,622,616.86 and Y = 96,908.00; thence North 38 degrees 51 minutes 34 seconds East 9,476.20 feet along the East line of said State Lease No. 17195 to its Northeast corner, also being a point on the South line of State Lease No. 17194 having Coordinates of X = 2,628,562.34 and Y = 104,287.00; thence East 2,123.66 feet along the South line of said State Lease No. 17194 to its Southeast corner, also being a point on the East line of said Block 40 having Coordinates of X = 2,630,686.00 and Y = 104,287.00; thence South 7,379.00 feet along the East line of said Block 40 to the point of beginning, containing approximately **863.32 acres**, all as more particularly outlined on a plat on file in the Office of Mineral Resources, Department of Natural Resources. All bearings, distances and coordinates are based on Louisiana Coordinate System of 1927, (North or South Zone).

NOTE: The above description of the Tract nominated for lease has been provided and corrected, where required, exclusively by the nomination party. Any mineral lease selected from this Tract and awarded by the Louisiana State Mineral Board shall be without warranty of any kind, either express, implied, or statutory, including, but not limited to, the implied warranties of merchantability and fitness for a particular purpose. Should the mineral lease awarded by the Louisiana State Mineral Board be subsequently modified, cancelled or abrogated due to the existence of conflicting leases, operating agreements, private claims or other future obligations or conditions which may affect all or any portion of the leased Tract, it shall not relieve the Lessee of the obligation to pay any bonus due thereon to the Louisiana State Mineral Board, nor shall the Louisiana State Mineral Board be obligated to refund any consideration paid by the Lessor prior to such modification, cancellation, or abrogation, including, but not limited to, bonuses, rentals and royalties.

NOTE: The State of Louisiana does hereby reserve, and this lease shall be subject to, the imprescriptible right of surface use in the nature of a servitude in favor of the Department of Natural Resources, including its Offices and Commissions, for the sole purpose of implementing, constructing, servicing and maintaining approved coastal zone management and/or restoration projects. Utilization of any and all rights derived under this lease by the mineral lessee, its agents, successors or assigns, shall not interfere with nor hinder the reasonable surface use by the

Department of Natural Resources, its Offices or Commissions, as herein above reserved.

NOTE: It appears, according to our records, that a portion of this Tract is located within the restrictive safety fairway area as set out by the Corps of Engineers, U.S. Army and/or the restrictive anchorage area as set out by the U.S. Coast Guard.

NOTE: The Department of Wildlife and Fisheries has designated certain areas in the coastal waters of the State of Louisiana as Oyster Seed Bed Areas. The exact location of those Seed Bed Areas must be obtained from the Department of Wildlife and Fisheries and any work done under a mineral lease from the State of Louisiana may necessarily be conducted in conformity with the rules and regulations promulgated by the said Department of Wildlife and Fisheries for Oyster Seed Bed Areas.

Applicant: Angelle & Donohue Oil & Gas Properties, Inc.

Bidder	Cash Payment	Price/Acre	Rental	Oil	Gas	Other



PLAQUEMINES PARISH

SL 17194

SOUTH PASS AREA

SL 17195

BLOCK SP0040

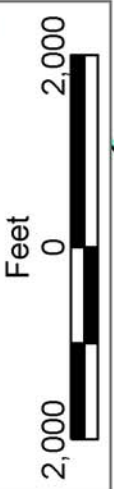
BLOCK SP0039

P.O.B.  
X=2,630,686.00  
Y=96,908.00

SL 16870

BLOCK SP0042

SL 16991



**TRACT 36254 - Portion of Block 41, South Pass Area, Plaquemines Parish, Louisiana**

The beds and bottoms of all water bodies belonging to the State of Louisiana located in that portion of Block 41, South Pass Area, together with any present lands formed by accretion to the shoreline, located in Plaquemines Parish, Louisiana, and not presently under mineral lease on May 12, 2004, the geographical area of which is more fully described as follows: Beginning at a point on the West line of Block 41, South Pass Area, having Coordinates of X = 2,605,477.93 and Y = 91,244.00; thence North 11,748.10 feet along the West line of said Block 41 to its Northwest corner having Coordinates of X = 2,605,477.93 and Y = 102,992.10; thence East 4,300.00 feet along the North line of said Block 41 to a point having Coordinates of X = 2,609,777.93 and Y = 102,992.10; thence South 1,141.81 feet to a point having Coordinates of X = 2,609,777.93 and Y = 101,850.29; thence East 619.49 feet to the most North Northwest corner of State Lease No. 17193 having Coordinates of X = 2,610,397.42 and Y = 101,850.29; thence along the boundary of said State Lease No. 17193 the following courses: South 29 degrees 01 minutes 30 seconds West 2,925.63 feet and South 2,985.42 feet to the Northwest corner of State Lease No. 17381 having Coordinates of X = 2,608,977.93 and Y = 96,306.68; thence along the boundary of said State Lease No. 17381 the following courses: South 35 degrees 37 minutes 33 seconds West 537.23 feet, South 29 degrees 15 minutes 25 seconds West 2,475.82 feet, South 05 degrees 52 minutes 11 seconds West 537.82 feet, South 39 degrees 10 minutes 25 seconds West 174.14 feet, South 49 degrees 50 minutes 19 seconds East 2,473.08 feet, North 63 degrees 14 minutes 45 seconds East 677.53 feet, North 51 degrees 20 minutes 25 seconds East 480.23 feet, North 38 degrees 58 minutes 39 seconds East 2,675.61 feet and North 38 degrees 56 minutes 35 seconds East 1,558.43 feet to the Northeast corner of said State Lease No. 17381, also being a point on the South line of said State Lease No. 17193 having Coordinates of X = 2,612,822.55 and Y = 95,342.10; thence East 3,105.45 feet along the South line of said State Lease No. 17193 to its Southeast corner, also being a point on the East line of said Block 41 having Coordinates of X = 2,615,928.00 and Y = 95,342.10; thence South 3,352.10 feet along the East line of said Block 41 to a point, also being the Northeast corner of State Lease No. 12966, as amended having Coordinates of X = 2,615,928.00 and Y = 91,990.00; thence along the boundary of said State Lease No. 12966 the following courses: West 2,040.86 feet and South 746.00 feet to a point on the West line of said State Lease No. 12966 having Coordinates of X = 2,613,887.14 and Y = 91,244.00; thence West 8,409.21 feet to the point of beginning, **LESS AND EXCEPT**, Operating Agreement No. 232, if any, that may lie within the above described tract, containing approximately **1,326.75 acres**, all as more particularly outlined on a plat on file in the Office of Mineral Resources, Department of Natural Resources. All bearings, distances and coordinates are based on Louisiana Coordinate System of 1927, (North or South Zone).

NOTE: The above description of the Tract nominated for lease has been provided and corrected, where required, exclusively by the nomination

party. Any mineral lease selected from this Tract and awarded by the Louisiana State Mineral Board shall be without warranty of any kind, either express, implied, or statutory, including, but not limited to, the implied warranties of merchantability and fitness for a particular purpose. Should the mineral lease awarded by the Louisiana State Mineral Board be subsequently modified, cancelled or abrogated due to the existence of conflicting leases, operating agreements, private claims or other future obligations or conditions which may affect all or any portion of the leased Tract, it shall not relieve the Lessee of the obligation to pay any bonus due thereon to the Louisiana State Mineral Board, nor shall the Louisiana State Mineral Board be obligated to refund any consideration paid by the Lessor prior to such modification, cancellation, or abrogation, including, but not limited to, bonuses, rentals and royalties.

NOTE: The State of Louisiana does hereby reserve, and this lease shall be subject to, the imprescriptible right of surface use in the nature of a servitude in favor of the Department of Natural Resources, including its Offices and Commissions, for the sole purpose of implementing, constructing, servicing and maintaining approved coastal zone management and/or restoration projects. Utilization of any and all rights derived under this lease by the mineral lessee, its agents, successors or assigns, shall not interfere with nor hinder the reasonable surface use by the Department of Natural Resources, its Offices or Commissions, as herein above reserved.

NOTE: It appears, according to our records, that a portion of this Tract is located within the restrictive safety fairway area as set out by the Corps of Engineers, U.S. Army and/or the restrictive anchorage area as set out by the U.S. Coast Guard.

NOTE: The Department of Wildlife and Fisheries has designated certain areas in the coastal waters of the State of Louisiana as Oyster Seed Bed Areas. The exact location of those Seed Bed Areas must be obtained from the Department of Wildlife and Fisheries and any work done under a mineral lease from the State of Louisiana may necessarily be conducted in conformity with the rules and regulations promulgated by the said Department of Wildlife and Fisheries for Oyster Seed Bed Areas.

Bidder	Cash Payment	Price/Acre	Rental	Oil	Gas	Other

Applicant: Angelle & Donohue Oil & Gas Properties, Inc.

