

TRACT 36235 - Portion of Blocks 2, and 3, East Cameron Area, Revised, Cameron Parish, Louisiana

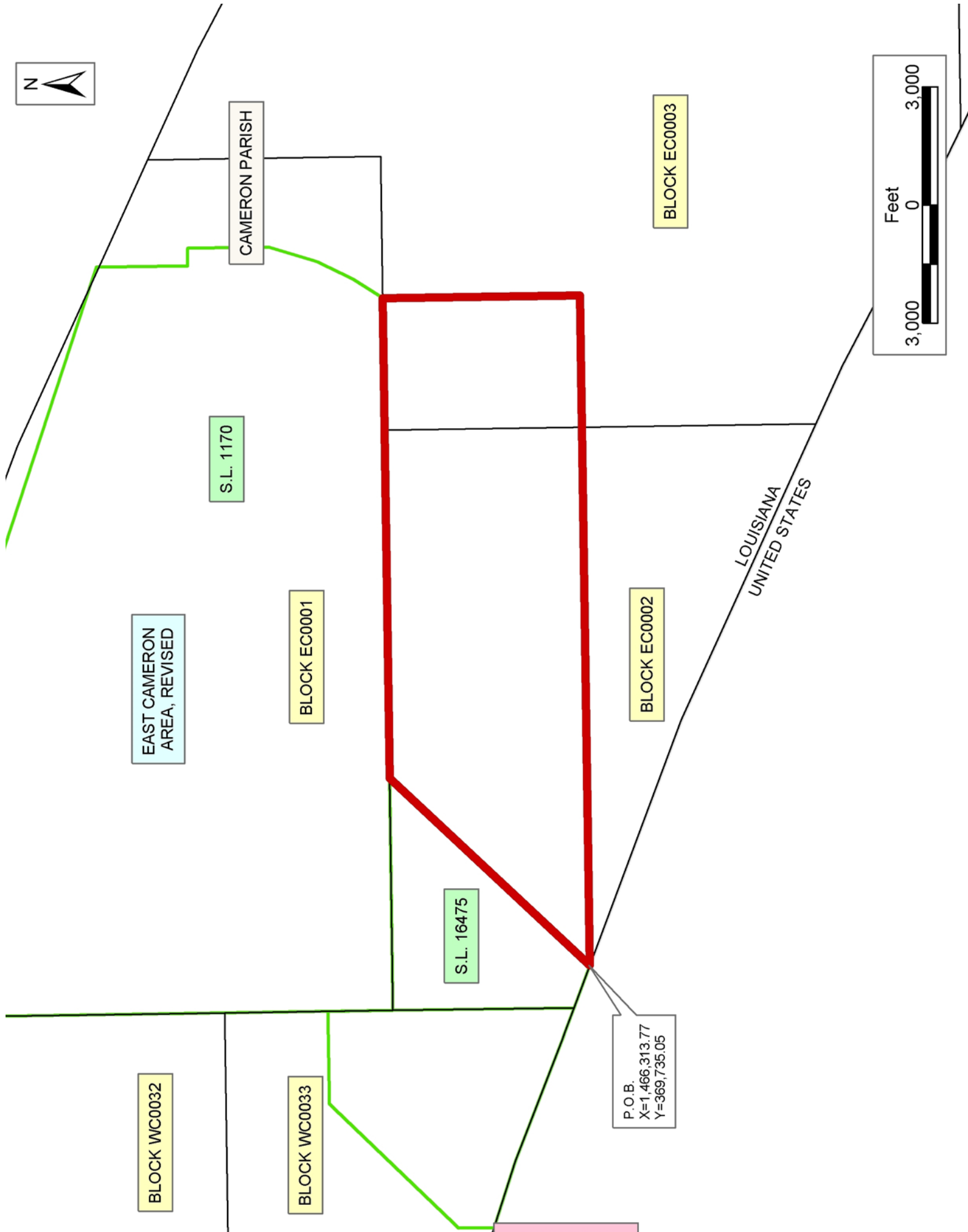
The beds and bottoms of all water bodies belonging to the State of Louisiana located in that portion of Blocks 2, and 3, East Cameron Area, Revised, together with any present lands formed by accretion to the shoreline, located in Cameron Parish, Louisiana, and not presently under mineral lease on May 12, 2004, the geographical area of which is more fully described as follows: Beginning at the Southeast corner of State Lease No. 16475 having Coordinates of X = 1,466,313.77 and Y = 369,735.05; thence North 43 degrees 52 minutes 01 seconds East 6,967.20 feet along the East line of said State Lease No. 16475 to its Northeast corner, said corner also being a point on the North line of Block 2, East Cameron Area, Revised, having Coordinates of X = 1,471,141.95 and Y = 374,758.05; thence East 8,858.05 feet along the North line of said Block 2 to its Northeast corner, said corner also being the most Westerly Northwest corner of Block 3, East Cameron Area, Revised, having Coordinates of X = 1,480,000.00 and Y = 374,758.05; thence East 3,350.00 feet along the boundary of said Block 3 to a point having Coordinates of X = 1,483,350.00 and Y = 374,758.05; thence South 5,023.00 feet to a point having Coordinates of X = 1,483,350.00 and Y = 369,735.05; thence West 3,350.00 feet to a point on the common block line between said Blocks 2 and 3 having Coordinates of X = 1,480,000.00 and Y = 369,735.05; thence West 13,686.23 feet to the point of beginning, containing **1,686.11 acres, LESS AND EXCEPT** that portion thereof, if any, lying seaward of the line three nautical miles from the coast line of Louisiana, as said three mile line has been decreed by the Supreme Court of the United States, as determined by a Special Master appointed therein, in litigation styled **United States v. State of Louisiana et al No. 9 Original**, in 1975, all as more particularly outlined on a plat in the Office of Mineral Resources, Department of Natural Resources. All bearings, distances and coordinates are based on the Louisiana Coordinate System of 1927, (South Zone).

NOTE: The above description of the Tract nominated for lease has been provided and corrected, where required, exclusively by the nomination party. Any mineral lease selected from this Tract and awarded by the Louisiana State Mineral Board shall be without warranty of any kind, either express, implied, or statutory, including, but not limited to, the implied warranties of merchantability and fitness for a particular purpose. Should the mineral lease awarded by the Louisiana State Mineral Board be subsequently modified, cancelled or abrogated due to the existence of conflicting leases, operating agreements, private claims or other future obligations or conditions which may affect all or any portion of the leased Tract, it shall not relieve the Lessee of the obligation to pay any bonus due thereon to the Louisiana State Mineral Board, nor shall the Louisiana State Mineral Board be obligated to refund any consideration paid by the Lessor prior to such modification, cancellation, or abrogation, including, but not limited to, bonuses, rentals and royalties.

NOTE: The State of Louisiana does hereby reserve, and this lease shall be subject to, the imprescriptible right of surface use in the nature of a servitude in favor of the Department of Natural Resources, including its Offices and Commissions, for the sole purpose of implementing, constructing, servicing and maintaining approved coastal zone management and/or restoration projects. Utilization of any and all rights derived under this lease by the mineral lessee, its agents, successors or assigns, shall not interfere with nor hinder the reasonable surface use by the Department of Natural Resources, its Offices or Commissions, as herein above reserved.

Applicant: Gulf Coast Oil Properties, Inc.

Bidder	Cash Payment	Price/ Acre	Rental	Oil	Gas	Other



TRACT 36236 - Portion of Block 3, East Cameron Area, Revised, Cameron Parish, Louisiana

The beds and bottoms of all water bodies belonging to the State of Louisiana located in that portion of Block 3, East Cameron Area, Revised, together with any present lands formed by accretion to the shoreline, located in Cameron Parish, Louisiana, and not presently under mineral lease on May 12, 2004, the geographical area of which is more fully described as follows: Beginning at a point on the East line of Block 3, East Cameron Area, Revised, having Coordinates of X = 1,493,033.33 and Y = 369,735.05; thence West 9,683.33 feet to a point having Coordinates of X = 1,483,350.00 and Y = 369,735.05; thence North 5,023.00 feet to a point on the Northern boundary of said Block 3 having Coordinates of X = 1,483,350.00 and Y = 374,758.05; thence East 3,605.29 feet along the Northern boundary of said Block 3 to an interior corner having Coordinates of X = 1,486,955.29 and Y = 374,758.05; thence East 6,078.05 feet to a point on the East line of said Block 3 having Coordinates of X = 1,493,033.33 and Y = 374,758.05; thence South 5,023.00 feet along the East line of said Block 3 to the point of beginning, containing **1,116.61 acres**, all as more particularly outlined on a plat on file in the Office of Mineral Resources, Department of Natural Resources. All bearings, distances and coordinates are based on Louisiana Coordinate System of 1927, (North or South Zone).

NOTE: The above description of the Tract nominated for lease has been provided and corrected, where required, exclusively by the nomination party. Any mineral lease selected from this Tract and awarded by the Louisiana State Mineral Board shall be without warranty of any kind, either express, implied, or statutory, including, but not limited to, the implied warranties of merchantability and fitness for a particular purpose. Should the mineral lease awarded by the Louisiana State Mineral Board be subsequently modified, cancelled or abrogated due to the existence of conflicting leases, operating agreements, private claims or other future obligations or conditions which may affect all or any portion of the leased Tract, it shall not relieve the Lessee of the obligation to pay any bonus due thereon to the Louisiana State Mineral Board, nor shall the Louisiana State Mineral Board be obligated to refund any consideration paid by the Lessor prior to such modification, cancellation, or abrogation, including, but not limited to, bonuses, rentals and royalties.

NOTE: The State of Louisiana does hereby reserve, and this lease shall be subject to, the imprescriptible right of surface use in the nature of a servitude in favor of the Department of Natural Resources, including its Offices and Commissions, for the sole purpose of implementing, constructing, servicing and maintaining approved coastal zone management and/or restoration projects. Utilization of any and all rights derived under this lease by the mineral lessee, its agents, successors or assigns, shall not interfere with nor hinder the reasonable surface use by the Department of Natural Resources, its Offices or Commissions, as herein above reserved.

Applicant: Gulf Coast Oil Properties, Inc.

Bidder	Cash Payment	Price/ Acre	Rental	Oil	Gas	Other



Coastline

CAMERON PARISH

EAST CAMERON
AREA, REVISED

P.O.B.
X=1,493,033.33
Y=369,735.05

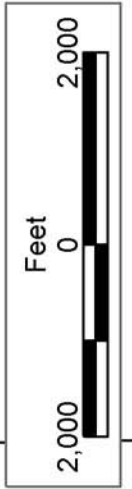
BLOCK EC0004

BLOCK EC0003

BLOCK EC0001

S.L. 1170

BLOCK
EC0002



TRACT 36237 - Portion of Block 2, East Cameron Area, Revised, Cameron Parish, Louisiana

The beds and bottoms of all water bodies belonging to the State of Louisiana located in that portion of Block 2, East Cameron Area, Revised, together with any present lands formed by accretion to the shoreline, located in Cameron Parish, Louisiana, and not presently under mineral lease on May 12, 2004, the geographical area of which is more fully described as follows: Beginning at the Southeast corner of State Lease No. 16475, said point also being a point on the Three Mile Decree line derived from the June 16, 1975 Decree in the United States vs. Louisiana No. 9 Original, having Coordinates of X = 1,466,313.77 and Y = 369,735.05; thence East 13,686.23 feet to a point on the East line of Block 2, East Cameron Area, Revised, having Coordinates of X = 1,480,000.00 and Y = 369,735.05; thence South 5,944.82 feet along the East line of said Block 2 to a point on said Three Mile Decree line having Coordinates of X = 1,480,000.00 and Y = 363,790.23; thence North 64 degrees 43 minutes 32 seconds West 8,269.63 feet along said Three Mile Decree line to a point having Coordinates of X = 1,472,522.00 and Y = 367,321.00; thence North 68 degrees 45 minutes 06 seconds West 6,661.06 feet along said Three Mile Decree line to the point of beginning, containing **889.52 acres, LESS AND EXCEPT** that portion thereof, if any, lying seaward of the line three nautical miles from the coast line of Louisiana, as said three mile line has been decreed by the Supreme Court of the United States, as determined by a Special Master appointed therein, in litigation styled **United States v. State of Louisiana et al No. 9 Original**, in 1975, all as more particularly outlined on a plat in the Office of Mineral Resources, Department of Natural Resources. All bearings, distances and coordinates are based on the Louisiana Coordinate System of 1927, (South Zone).

NOTE: The above description of the Tract nominated for lease has been provided and corrected, where required, exclusively by the nomination party. Any mineral lease selected from this Tract and awarded by the Louisiana State Mineral Board shall be without warranty of any kind, either express, implied, or statutory, including, but not limited to, the implied warranties of merchantability and fitness for a particular purpose. Should the mineral lease awarded by the Louisiana State Mineral Board be subsequently modified, cancelled or abrogated due to the existence of conflicting leases, operating agreements, private claims or other future obligations or conditions which may affect all or any portion of the leased Tract, it shall not relieve the Lessee of the obligation to pay any bonus due thereon to the Louisiana State Mineral Board, nor shall the Louisiana State Mineral Board be obligated to refund any consideration paid by the Lessor prior to such modification, cancellation, or abrogation, including, but not limited to, bonuses, rentals and royalties.

NOTE: The State of Louisiana does hereby reserve, and this lease shall be subject to, the imprescriptible right of surface use in the nature of a servitude in favor of the Department of Natural Resources, including its Offices and Commissions, for the sole purpose of implementing,

constructing, servicing and maintaining approved coastal zone management and/or restoration projects. Utilization of any and all rights derived under this lease by the mineral lessee, its agents, successors or assigns, shall not interfere with nor hinder the reasonable surface use by the Department of Natural Resources, its Offices or Commissions, as herein above reserved.

Applicant: Gulf Coast Oil Properties, Inc.

Bidder	Cash Payment	Price/ Acre	Rental	Oil	Gas	Other



TRACT 36238 - Portion of Block 3, East Cameron Area, Revised, Cameron Parish, Louisiana

The beds and bottoms of all water bodies belonging to the State of Louisiana located in that portion of Block 3, East Cameron Area, Revised, together with any present lands formed by accretion to the shoreline, located in Cameron Parish, Louisiana, and not presently under mineral lease on May 12, 2004, the geographical area of which is more fully described as follows: Beginning at a point on the East line of Block 3, East Cameron Area, Revised, having Coordinates of X = 1,493,033.33 and Y = 369,735.05; thence South 5,944.82 feet along the East line of said Block 3 to a point having Coordinates of X = 1,493,033.33 and Y = 363,790.23; thence West 13,033.33 feet to a point on the Three Mile Decree line derived from the June 16, 1975 Decree in the United States vs. Louisiana No. 9 Original, said point also being a point on the West line of said Block 3, having Coordinates of X = 1,480,000.00 and Y = 363,790.23; thence North 5,944.82 feet along the West line of said Block 3 to a point having Coordinates of X = 1,480,000.00 and Y = 369,735.05; thence East 13,033.33 feet to the point of beginning, containing **1,778.71 acres, LESS AND EXCEPT** that portion thereof, if any, lying seaward of the line three nautical miles from the coast line of Louisiana, as said three mile line has been decreed by the Supreme Court of the United States, as determined by a Special Master appointed therein, in litigation styled **United States v. State of Louisiana et al No. 9 Original**, in 1975, all as more particularly outlined on a plat in the Office of Mineral Resources, Department of Natural Resources. All bearings, distances and coordinates are based on the Louisiana Coordinate System of 1927, (South Zone).

NOTE: The above description of the Tract nominated for lease has been provided and corrected, where required, exclusively by the nomination party. Any mineral lease selected from this Tract and awarded by the Louisiana State Mineral Board shall be without warranty of any kind, either express, implied, or statutory, including, but not limited to, the implied warranties of merchantability and fitness for a particular purpose. Should the mineral lease awarded by the Louisiana State Mineral Board be subsequently modified, cancelled or abrogated due to the existence of conflicting leases, operating agreements, private claims or other future obligations or conditions which may affect all or any portion of the leased Tract, it shall not relieve the Lessee of the obligation to pay any bonus due thereon to the Louisiana State Mineral Board, nor shall the Louisiana State Mineral Board be obligated to refund any consideration paid by the Lessor prior to such modification, cancellation, or abrogation, including, but not limited to, bonuses, rentals and royalties.

NOTE: The State of Louisiana does hereby reserve, and this lease shall be subject to, the imprescriptible right of surface use in the nature of a servitude in favor of the Department of Natural Resources, including its Offices and Commissions, for the sole purpose of implementing, constructing, servicing and maintaining approved coastal zone management and/or restoration projects. Utilization of any and all rights derived

under this lease by the mineral lessee, its agents, successors or assigns, shall not interfere with nor hinder the reasonable surface use by the Department of Natural Resources, its Offices or Commissions, as herein above reserved.

Applicant: Gulf Coast Oil Properties, Inc.

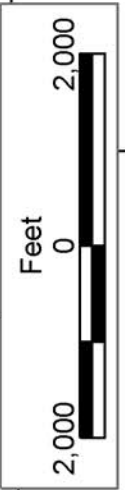
Bidder	Cash Payment	Price/ Acre	Rental	Oil	Gas	Other



BLOCK EC0004

P.O.B.
X=1,493,033.33
Y=369,735.05

CAMERON PARISH



BLOCK EC0003

LOUISIANA
UNITED STATES

EAST CAMERON
AREA, REVISED

BLOCK EC0002

TRACT 36239 - Portion of Blocks 37, and 44, Breton Sound Area, Plaquemines Parish, Louisiana

The beds and bottoms of all water bodies belonging to the State of Louisiana located in that portion of Blocks 37, and 44, Breton Sound Area, together with any present lands formed by accretion to the shoreline, located in Plaquemines Parish, Louisiana, and not presently under mineral lease on May 12, 2004, the geographical area of which is more fully described as follows: Beginning at a point on the West line of Block 44, Breton Sound Area having Coordinates of X = 2,694,350.00 and Y = 301,580.00; thence North 6,000.00 feet along the West line of said Block 44 to its Northwest corner and the Southwest corner of Block 37, Breton Sound Area having Coordinates of X = 2,694,350.00 and Y = 307,580.00; thence North 2,912.12 feet along the West line of said Block 37 to a point having Coordinates of X = 2,694,350.00 and Y = 310,492.12; thence Northeasterly on a straight line to a point on the East line of said Block 37 having Coordinates of X = 2,709,100.00 and Y = 315,555.59; thence South 2,975.59 feet along the East line of said Block 37 to the Northeast corner of State Lease No. 17941 having Coordinates of X = 2,709,100.00 and Y = 312,580.00; thence along the boundary of said State Lease No. 17941 the following courses: West 5,800.00 feet, South 73 degrees 36 minutes 38 seconds West 3,544.01 feet and South 24 degrees 31 minutes 29 seconds East 4,396.66 feet to the Southwest corner of said State Lease No. 17941, a point on the South line of said Block 37, a point on the North line of said Block 44 and the Northwest corner of State Lease No. 17944 having Coordinates of X = 2,701,725.00 and Y = 307,580.00; thence South 25 degrees 36 minutes 08 seconds East 6,653.24 feet along the West line of said State Lease No. 17944 to its Southwest corner having Coordinates of X = 2,704,600.00 and Y = 301,580.00; thence West 10,250.00 feet to the point of beginning, containing approximately **2,124.01 acres**, all as more particularly outlined on a plat on file in the Office of Mineral Resources, Department of Natural Resources. All bearings, distances and coordinates are based on Louisiana Coordinate System of 1927, (North or South Zone).

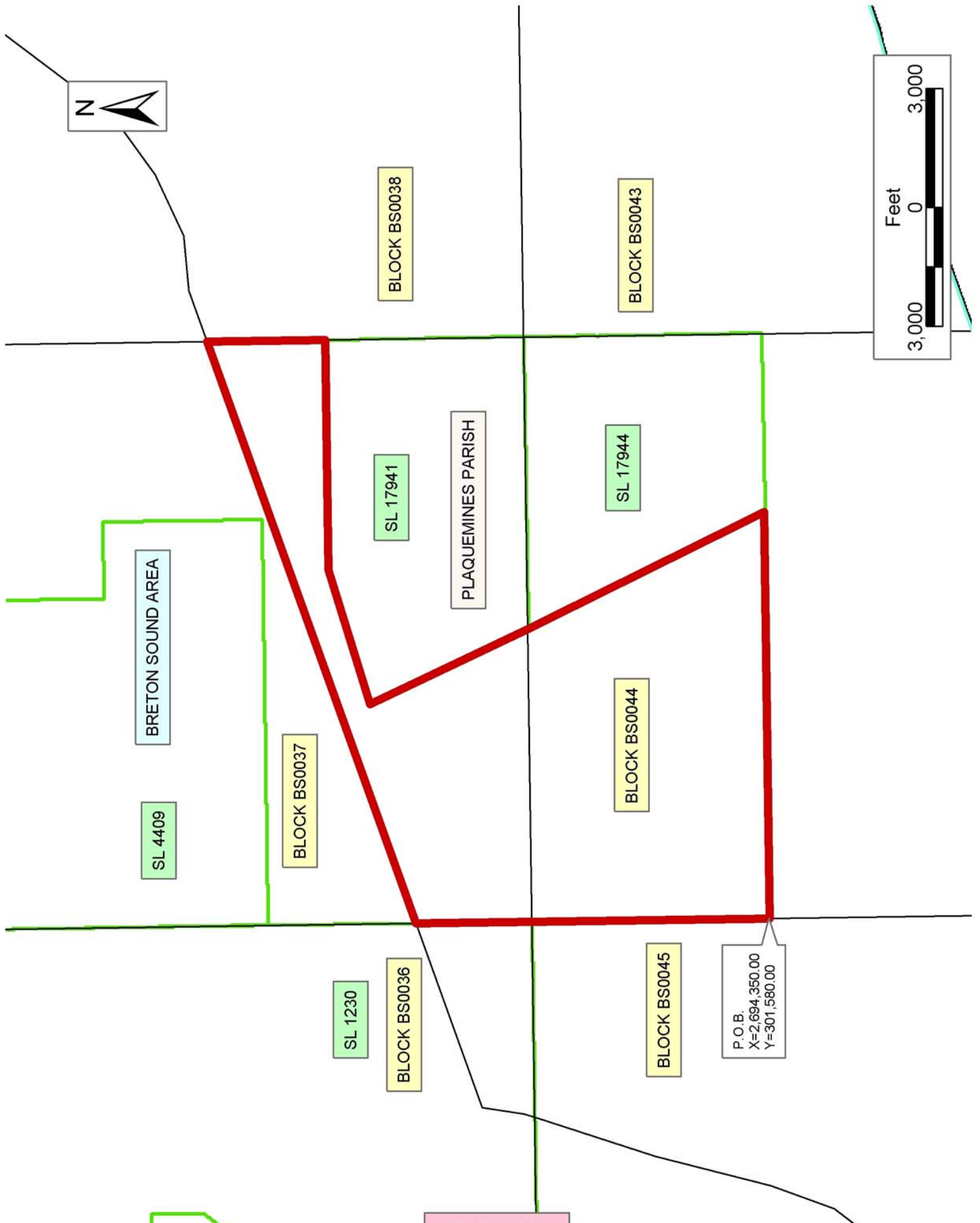
NOTE: The above description of the Tract nominated for lease has been provided and corrected, where required, exclusively by the nomination party. Any mineral lease selected from this Tract and awarded by the Louisiana State Mineral Board shall be without warranty of any kind, either express, implied, or statutory, including, but not limited to, the implied warranties of merchantability and fitness for a particular purpose. Should the mineral lease awarded by the Louisiana State Mineral Board be subsequently modified, cancelled or abrogated due to the existence of conflicting leases, operating agreements, private claims or other future obligations or conditions which may affect all or any portion of the leased Tract, it shall not relieve the Lessee of the obligation to pay any bonus due thereon to the Louisiana State Mineral Board, nor shall the Louisiana State Mineral Board be obligated to refund any consideration paid by the Lessor prior to such modification, cancellation, or abrogation, including, but not limited to, bonuses, rentals and royalties.

NOTE: The State of Louisiana does hereby reserve, and this lease shall be subject to, the imprescriptible right of surface use in the nature of a servitude in favor of the Department of Natural Resources, including its Offices and Commissions, for the sole purpose of implementing, constructing, servicing and maintaining approved coastal zone management and/or restoration projects. Utilization of any and all rights derived under this lease by the mineral lessee, its agents, successors or assigns, shall not interfere with nor hinder the reasonable surface use by the Department of Natural Resources, its Offices or Commissions, as herein above reserved.

NOTE: It appears, according to our records, that a portion of this Tract is located within the restrictive safety fairway area as set out by the Corps of Engineers, U.S. Army and/or the restrictive anchorage area as set out by the U.S. Coast Guard.

Applicant: Angelle & Donohue Oil & Gas Properties, Inc.

Bidder	Cash Payment	Price/ Acre	Rental	Oil	Gas	Other



BRETON SOUND AREA

SL 4409

BLOCK BS0037

SL 1230

BLOCK BS0036

SL 17941

BLOCK BS0038

PLAQUEMINES PARISH

SL 17944

BLOCK BS0043

BLOCK BS0044

BLOCK BS0045

P.O.B.
X=2,694,350.00
Y=301,580.00

TRACT 36240 - Portion of Blocks 45, and 46, Breton Sound Area, Plaquemines Parish, Louisiana

The beds and bottoms of all water bodies belonging to the State of Louisiana located in that portion of Blocks 45, and 46, Breton Sound Area, together with any present lands formed by accretion to the shoreline, located in Plaquemines Parish, Louisiana, and not presently under mineral lease on May 12, 2004, the geographical area of which is more fully described as follows: Beginning at the Northeast corner of Block 45, Breton Sound Area, having Coordinates of X = 2,694,350.00 and Y = 307,580.00; thence South 7,900.00 feet on the East line of said Block 45 to the North corner of State Lease No. 16735 having Coordinates of X = 2,694,350.00 and Y = 299,680.00; thence South 29 degrees 33 minutes 37 seconds West 3,851.30 feet on the West line of said State Lease No. 16735 to its Southwest corner and a point on the North line of State Lease No. 15683 having Coordinates of X = 2,692,450.00 and Y = 296,330.00; thence West 850.00 feet on the North line of said State Lease No. 15683 to its Northwest corner and the Northeast corner of State Lease No. 17942 having Coordinates of X = 2,691,600.00 and Y = 296,330.00; thence South 64 degrees 19 minutes 10 seconds West 7,125.32 feet on the boundary of said State Lease No. 17942 to its Southwest corner and a point on the North line of State Lease No. 17674 having Coordinates of X = 2,685,178.49 and Y = 293,242.22; thence South 82 degrees 36 minutes 38 seconds West 3,205.11 feet on the boundary of said State Lease No. 17674 to its Southwest corner and a point on the South line of said Block 45 having Coordinates of X = 2,682,000.00 and Y = 292,830.00; thence West 2,400.00 feet on the South line of said Block 45 to its Southwest corner and the Southeast corner of Block 46, having Coordinates of X = 2,679,600.00 and Y = 292,830.00; thence West 1,433.58 feet on the South line of said Block 46 to a point having Coordinates of X = 2,678,166.42 and Y = 292,830.00; thence Northwesterly on a straight line to a point having Coordinates of X = 2,678,009 and Y = 294,303; thence Northeasterly on a straight line to a point having Coordinates of X = 2,680,880 and Y = 294,918; thence Northeasterly on a straight line to a point having Coordinates of X = 2,683,264 and Y = 296,069; thence Northeasterly on a straight line to a point having Coordinates of X = 2,685,058 and Y = 297,573; thence Northeasterly on a straight line to a point having Coordinates of X = 2,687,014 and Y = 300,054; thence Northeasterly on a straight line to a point having Coordinates of X = 2,687,610 and Y = 301,648; thence Northeasterly on a straight line to a point on the South line of State Lease No. 2001 having Coordinates of X = 2,687,625.35 and Y = 301,705.00; thence along the boundary of said State Lease No. 2001 the following courses: East 4,724.65 feet and North 2,925.00 feet to its Northeast corner and the Southeast corner of State Lease No. 1237 having Coordinates of X = 2,692,350.00 and Y = 304,630.00; thence North 2,950.00 feet on the East line of said State Lease No. 1237 to its Northeast corner and a point on the North line of said Block 45 having Coordinates of X = 2,692,350.00 and Y = 307,580.00; thence East 2,000.00 feet on the North line of said Block 45 to the point of beginning, containing approximately **1,848.78 acres**, all as more particularly outlined on a plat on file in the Office

of Mineral Resources, Department of Natural Resources. All bearings, distances and coordinates are based on Louisiana Coordinate System of 1927, (North or South Zone).

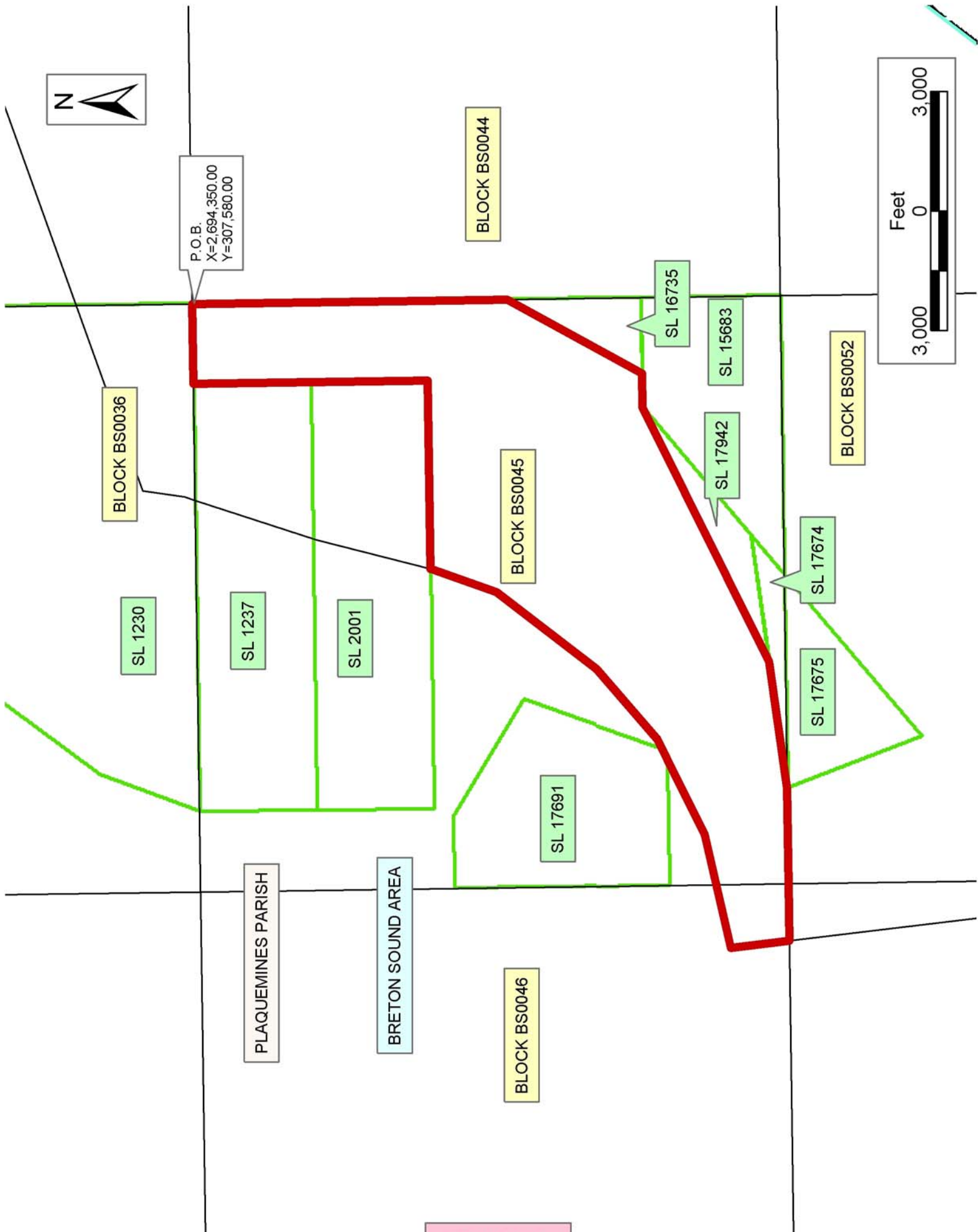
NOTE: The above description of the Tract nominated for lease has been provided and corrected, where required, exclusively by the nomination party. Any mineral lease selected from this Tract and awarded by the Louisiana State Mineral Board shall be without warranty of any kind, either express, implied, or statutory, including, but not limited to, the implied warranties of merchantability and fitness for a particular purpose. Should the mineral lease awarded by the Louisiana State Mineral Board be subsequently modified, cancelled or abrogated due to the existence of conflicting leases, operating agreements, private claims or other future obligations or conditions which may affect all or any portion of the leased Tract, it shall not relieve the Lessee of the obligation to pay any bonus due thereon to the Louisiana State Mineral Board, nor shall the Louisiana State Mineral Board be obligated to refund any consideration paid by the Lessor prior to such modification, cancellation, or abrogation, including, but not limited to, bonuses, rentals and royalties.

NOTE: The State of Louisiana does hereby reserve, and this lease shall be subject to, the imprescriptible right of surface use in the nature of a servitude in favor of the Department of Natural Resources, including its Offices and Commissions, for the sole purpose of implementing, constructing, servicing and maintaining approved coastal zone management and/or restoration projects. Utilization of any and all rights derived under this lease by the mineral lessee, its agents, successors or assigns, shall not interfere with nor hinder the reasonable surface use by the Department of Natural Resources, its Offices or Commissions, as herein above reserved.

NOTE: It appears, according to our records, that a portion of this Tract is located within the restrictive safety fairway area as set out by the Corps of Engineers, U.S. Army and/or the restrictive anchorage area as set out by the U.S. Coast Guard.

Applicant: Angelle & Donohue Oil & Gas Properties, Inc.

Bidder	Cash Payment	Price/ Acre	Rental	Oil	Gas	Other



TRACT 36241 - Portion of Block 44, Breton Sound Area, Plaquemines Parish, Louisiana

The beds and bottoms of all water bodies belonging to the State of Louisiana located in that portion of Block 44, Breton Sound Area, together with any present lands formed by accretion to the shoreline, located in Plaquemines Parish, Louisiana, and not presently under mineral lease on May 12, 2004, the geographical area of which is more fully described as follows: Beginning at a point on the West line of Block 44, Breton Sound Area having Coordinates of X = 2,694,350.00 and Y = 301,580.00; thence East 10,250.00 feet to the Southwest corner of State Lease No. 17944 having Coordinates of X = 2,704,600.00 and Y = 301,580.00; thence East 4,500.00 feet on the South line of said State Lease No. 17944 to its Southeast corner and a point on the East line of said Block 44 having Coordinates of X = 2,709,100.00 and Y = 301,580.00; thence South 5,309.92 feet on the East line of said Block 44 to a point having Coordinates of X = 2,709,100.00 and Y = 296,270.08; thence Southwesterly on a straight line to a point having Coordinates of X = 2,704,480 and Y = 294,684; thence Southwesterly on a straight line to a point having Coordinates of X = 2,704,099 and Y = 293,666; thence Southwesterly on an arc having a radius of 18,240.60 feet and a center at X = 2,687,014 and Y = 300,054 to a point on the South line of said Block 44 having Coordinates of X = 2,703,763.13 and Y = 292,830.00; thence West 4,200.09 feet on the South line of said Block 44 to the Southeast corner of State Lease No. 16736 having Coordinates of X = 2,699,563.04 and Y = 292,830.00; thence along the boundary of said State Lease No. 16736 the following courses: North 43 degrees 43 minutes 37 seconds East 3,127.73 feet, North 1,239.77 feet, and West 2,177.00 feet to the Southeast corner of State Lease No. 17943 having Coordinates of X = 2,699,548.00 and Y = 296,330.00; thence along the boundary of said State Lease No. 17943 the following courses: North 25 degrees 42 minutes 27 seconds East 1,493.86 feet, North 44 degrees 01 minute 20 seconds West 3231.95 feet, and South 30 degrees 53 minutes 30 seconds West 1,363.41 feet to a point on the boundary of said State Lease No. 16736 having Coordinates of X = 2,697,250.00 and Y = 298,830.00; thence along the boundary of said State Lease No. 16736 the following courses: North 46 degrees 23 minutes 50 seconds West 1,450.00 feet and South 85 degrees 21 minutes 52 seconds West 1,856.07 feet to its Northwest corner and a point on the West line of said Block 44 having Coordinates of X = 2,694,350.00 and Y = 299,680.00; thence North 1,900.00 feet on the West line of said Block 44 to the point of beginning, containing approximately **1,744.07 acres, LESS AND EXCEPT** that portion thereof, if any, lying seaward of the line three nautical miles from the coast line of Louisiana, as said three mile line has been decreed by the Supreme Court of the United States, as determined by a Special Master appointed therein, in litigation styled **United States v. State of Louisiana et al No. 9 Original**, in 1975, all as more particularly outlined on a plat in the Office of Mineral Resources, Department of Natural Resources. All bearings, distances and coordinates are based on the Louisiana Coordinate System of 1927, (South Zone).

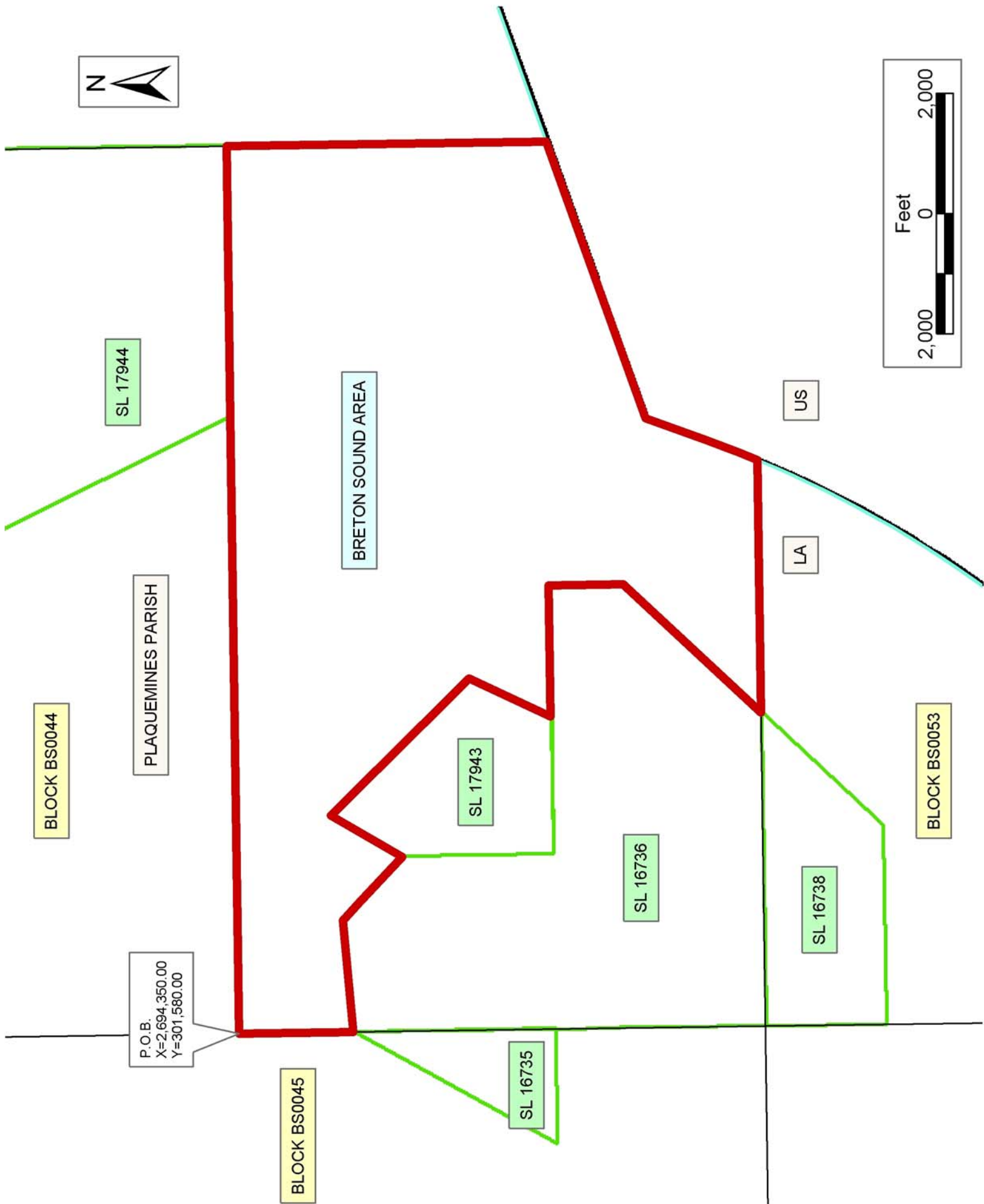
NOTE: The above description of the Tract nominated for lease has been provided and corrected, where required, exclusively by the nomination party. Any mineral lease selected from this Tract and awarded by the Louisiana State Mineral Board shall be without warranty of any kind, either express, implied, or statutory, including, but not limited to, the implied warranties of merchantability and fitness for a particular purpose. Should the mineral lease awarded by the Louisiana State Mineral Board be subsequently modified, cancelled or abrogated due to the existence of conflicting leases, operating agreements, private claims or other future obligations or conditions which may affect all or any portion of the leased Tract, it shall not relieve the Lessee of the obligation to pay any bonus due thereon to the Louisiana State Mineral Board, nor shall the Louisiana State Mineral Board be obligated to refund any consideration paid by the Lessor prior to such modification, cancellation, or abrogation, including, but not limited to, bonuses, rentals and royalties.

NOTE: The State of Louisiana does hereby reserve, and this lease shall be subject to, the imprescriptible right of surface use in the nature of a servitude in favor of the Department of Natural Resources, including its Offices and Commissions, for the sole purpose of implementing, constructing, servicing and maintaining approved coastal zone management and/or restoration projects. Utilization of any and all rights derived under this lease by the mineral lessee, its agents, successors or assigns, shall not interfere with nor hinder the reasonable surface use by the Department of Natural Resources, its Offices or Commissions, as herein above reserved.

NOTE: It appears, according to our records, that a portion of this Tract is located within the restrictive safety fairway area as set out by the Corps of Engineers, U.S. Army and/or the restrictive anchorage area as set out by the U.S. Coast Guard.

Applicant: Angelle & Donohue Oil & Gas Properties, Inc.

Bidder	Cash Payment	Price/ Acre	Rental	Oil	Gas	Other



TRACT 36242 - Portion of Block 18, West Delta Area, Plaquemines Parish, Louisiana

The beds and bottoms of all water bodies belonging to the State of Louisiana located in that portion of Block 18, West Delta Area, together with any present lands formed by accretion to the shoreline, located in Plaquemines Parish, Louisiana, and not presently under mineral lease on May 12, 2004, the geographical area of which is more fully described as follows: Beginning at the Northeast corner of Block 18, West Delta Area, having Coordinates of X = 2,517,972.00 and Y = 207,202.60; thence along the East boundary line of said Block 18, South 10,000.00 feet to a point having Coordinates of X = 2,517,972.00 and Y = 197,202.60; thence West 10,450.00 feet to a point on the West boundary line of said Block 18 having Coordinates of X = 2,507,522.00 and Y = 197,202.60; thence along the West boundary line of said Block 18, North 10,000.00 feet to a point having Coordinates of X = 2,507,522.00 and Y = 207,202.60; thence along the North boundary line of said Block 18, East 10,450.00 feet to the point of beginning, containing approximately **2,398.99 acres**, all as more particularly outlined on a plat on file in the Office of Mineral Resources, Department of Natural Resources. All bearings, distances and coordinates are based on Louisiana Coordinate System of 1927, (North or South Zone).

NOTE: The above description of the Tract nominated for lease has been provided and corrected, where required, exclusively by the nomination party. Any mineral lease selected from this Tract and awarded by the Louisiana State Mineral Board shall be without warranty of any kind, either express, implied, or statutory, including, but not limited to, the implied warranties of merchantability and fitness for a particular purpose. Should the mineral lease awarded by the Louisiana State Mineral Board be subsequently modified, cancelled or abrogated due to the existence of conflicting leases, operating agreements, private claims or other future obligations or conditions which may affect all or any portion of the leased Tract, it shall not relieve the Lessee of the obligation to pay any bonus due thereon to the Louisiana State Mineral Board, nor shall the Louisiana State Mineral Board be obligated to refund any consideration paid by the Lessor prior to such modification, cancellation, or abrogation, including, but not limited to, bonuses, rentals and royalties.

NOTE: The State of Louisiana does hereby reserve, and this lease shall be subject to, the imprescriptible right of surface use in the nature of a servitude in favor of the Department of Natural Resources, including its Offices and Commissions, for the sole purpose of implementing, constructing, servicing and maintaining approved coastal zone management and/or restoration projects. Utilization of any and all rights derived under this lease by the mineral lessee, its agents, successors or assigns, shall not interfere with nor hinder the reasonable surface use by the Department of Natural Resources, its Offices or Commissions, as herein above reserved.

Applicant: Suncoast Land Services, Inc.

Bidder	Cash Payment	Price/ Acre	Rental	Oil	Gas	Other



Coastline

BLOCK WD0008

BLOCK WD0019

P.O.B.
X=2,517,972.00
Y=207,202.60

LOUISIANA
UNITED STATES



BLOCK WD0009

BLOCK WD0018

WEST DELTA AREA

BLOCK WD0010

PLAQUEMINES PARISH

BLOCK WD0017

TRACT 36243 - Portion of Block 19, West Delta Area, Plaquemines Parish, Louisiana

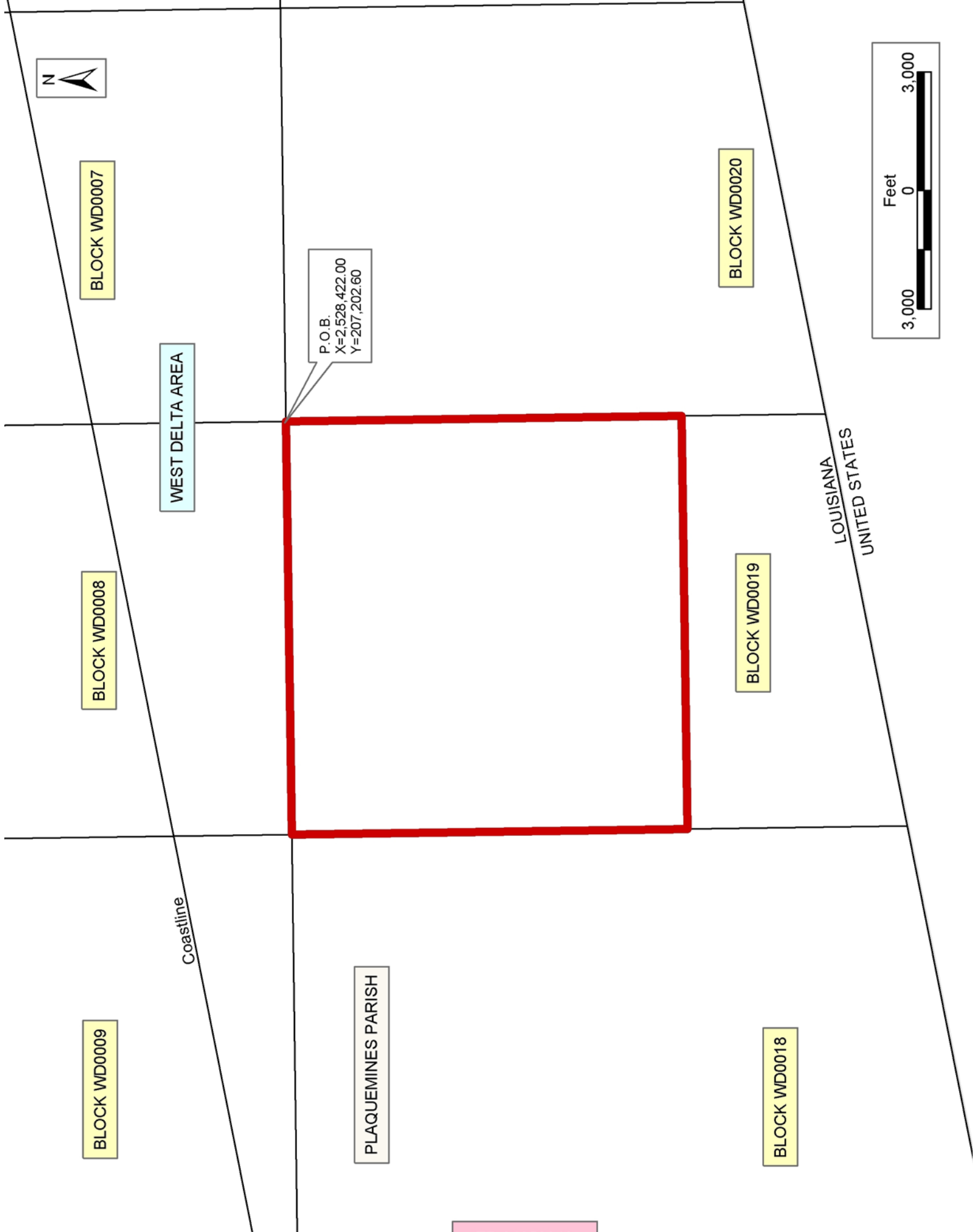
The beds and bottoms of all water bodies belonging to the State of Louisiana located in that portion of Block 19, West Delta Area, together with any present lands formed by accretion to the shoreline, located in Plaquemines Parish, Louisiana, and not presently under mineral lease on May 12, 2004, the geographical area of which is more fully described as follows: Beginning at the Northeast corner of Block 19, West Delta Area, having Coordinates of X = 2,528,422.00 and Y = 207,202.60; thence along the East boundary line of said Block 19, South 10,000.00 feet to a point having Coordinates of X = 2,528,422.00 and Y = 197,202.60; thence West 10,450.00 feet to a point being on the West boundary line of said Block 19 having Coordinates of X = 2,517,972.00 and Y = 197,202.60; thence along the West boundary line of said Block 19, North 10,000.00 feet to a point having Coordinates of X = 2,517,972.00 and Y = 207,202.60, also being the Northwest corner of said Block 19; thence along the North boundary line of Block 19, East 10,450.00 feet to the point of beginning, containing approximately **2,398.99 acres**, all as more particularly outlined on a plat on file in the Office of Mineral Resources, Department of Natural Resources. All bearings, distances and coordinates are based on Louisiana Coordinate System of 1927, (North or South Zone).

NOTE: The above description of the Tract nominated for lease has been provided and corrected, where required, exclusively by the nomination party. Any mineral lease selected from this Tract and awarded by the Louisiana State Mineral Board shall be without warranty of any kind, either express, implied, or statutory, including, but not limited to, the implied warranties of merchantability and fitness for a particular purpose. Should the mineral lease awarded by the Louisiana State Mineral Board be subsequently modified, cancelled or abrogated due to the existence of conflicting leases, operating agreements, private claims or other future obligations or conditions which may affect all or any portion of the leased Tract, it shall not relieve the Lessee of the obligation to pay any bonus due thereon to the Louisiana State Mineral Board, nor shall the Louisiana State Mineral Board be obligated to refund any consideration paid by the Lessor prior to such modification, cancellation, or abrogation, including, but not limited to, bonuses, rentals and royalties.

NOTE: The State of Louisiana does hereby reserve, and this lease shall be subject to, the imprescriptible right of surface use in the nature of a servitude in favor of the Department of Natural Resources, including its Offices and Commissions, for the sole purpose of implementing, constructing, servicing and maintaining approved coastal zone management and/or restoration projects. Utilization of any and all rights derived under this lease by the mineral lessee, its agents, successors or assigns, shall not interfere with nor hinder the reasonable surface use by the Department of Natural Resources, its Offices or Commissions, as herein above reserved.

Applicant: Suncoast Land Services, Inc.

Bidder	Cash Payment	Price/ Acre	Rental	Oil	Gas	Other



TRACT 36244 - Portion of Block 20, West Delta Area, Plaquemines Parish, Louisiana

The beds and bottoms of all water bodies belonging to the State of Louisiana located in that portion of Block 20, West Delta Area, together with any present lands formed by accretion to the shoreline, located in Plaquemines Parish, Louisiana, and not presently under mineral lease on May 12, 2004, the geographical area of which is more fully described as follows: Beginning at the Northeast corner of Block 20, West Delta Area, having Coordinates of X = 2,538,872.00 and Y = 207,202.60; thence along the East boundary line of said Block 20, South 10,000 feet to a point on the West line of said State Lease No. 17872, having Coordinates of X = 2,538,872.00 and Y = 197,202.60; thence West 10,450.00 feet to a point being on the West boundary line of said Block 20 having Coordinates of X = 2,528,422.00 and Y = 197,202.60; thence along the West boundary line of said Block 20, North 10,000.00 feet to a point having Coordinates of X = 2,528,422.00 and Y = 207,202.60, said point also being the Northwest corner of Block 20; thence East 10,450.00 along the North boundary line of said Block 20, to the point of beginning, containing approximately **2,398.99 acres**, all as more particularly outlined on a plat on file in the Office of Mineral Resources, Department of Natural Resources. All bearings, distances and coordinates are based on Louisiana Coordinate System of 1927, (North or South Zone).

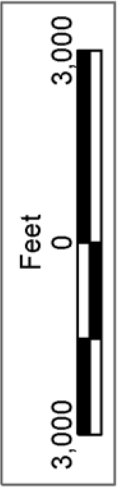
NOTE: The above description of the Tract nominated for lease has been provided and corrected, where required, exclusively by the nomination party. Any mineral lease selected from this Tract and awarded by the Louisiana State Mineral Board shall be without warranty of any kind, either express, implied, or statutory, including, but not limited to, the implied warranties of merchantability and fitness for a particular purpose. Should the mineral lease awarded by the Louisiana State Mineral Board be subsequently modified, cancelled or abrogated due to the existence of conflicting leases, operating agreements, private claims or other future obligations or conditions which may affect all or any portion of the leased Tract, it shall not relieve the Lessee of the obligation to pay any bonus due thereon to the Louisiana State Mineral Board, nor shall the Louisiana State Mineral Board be obligated to refund any consideration paid by the Lessor prior to such modification, cancellation, or abrogation, including, but not limited to, bonuses, rentals and royalties.

NOTE: The State of Louisiana does hereby reserve, and this lease shall be subject to, the imprescriptible right of surface use in the nature of a servitude in favor of the Department of Natural Resources, including its Offices and Commissions, for the sole purpose of implementing, constructing, servicing and maintaining approved coastal zone management and/or restoration projects. Utilization of any and all rights derived under this lease by the mineral lessee, its agents, successors or assigns, shall not interfere with nor hinder the reasonable surface use by the Department of Natural Resources, its Offices or Commissions, as herein above reserved.

NOTE: It appears, according to our records, that a portion of this Tract is located within the restrictive safety fairway area as set out by the Corps of Engineers, U.S. Army and/or the restrictive anchorage area as set out by the U.S. Coast Guard.

Applicant: Suncoast Land Services, Inc.

Bidder	Cash Payment	Price/ Acre	Rental	Oil	Gas	Other



WEST DELTA AREA

Coastline

BLOCK WD0006

BLOCK WD0007

BLOCK WD0008

PLAQUEMINES PARISH

P.O.B.
X=2,538,872.00
Y=207,202.60

S.L. 17872

BLOCK WD0021

BLOCK WD0020

BLOCK WD0019

LOUISIANA
UNITED STATES