

**TRACT 35463 - Portion of Block 31, Chandeleur Sound Area, Addition, Revised, St. Bernard Parish, Louisiana**

All of the lands now or formerly constituting the beds and bottoms of all water bodies of every nature and description, and all islands and other lands formed by accretion, where allowed by law, or by reliction, and excepting tax adjudicated lands, belonging to the State of Louisiana and not presently under mineral lease on May 14, 2003, situated in St. Bernard Parish, Louisiana, and more particularly described as follows: Beginning at a point having Coordinates of X = 2,738,600.00 and Y = 514,080.00, being the Northwest corner of Block 31, Chandeleur Sound Area, Addition, Revised; thence East 7,375.00 feet along the North line of said Block 31 to a point having Coordinates of X = 2,745,975.00 and Y = 514,080.00; thence South 14,750.00 feet to the intersection of the South line of said Block 31 having Coordinates of X = 2,745,975.00 and Y = 499,330.00; thence West 7,375.00 feet along the South line of said Block 31 to a point having Coordinates of X = 2,738,600.00 and Y = 499,330.00, being the Southwest corner of said Block 31; thence North 14,750.00 feet along the West line of said Block 31 to the point of beginning, containing approximately **2,497.27 acres**, all as more particularly outlined on a plat on file in the Office of Mineral Resources, Department of Natural Resources. All bearings, distances and coordinates are based on Louisiana Coordinate System of 1927, (North or South Zone), where applicable.

NOTE: The above description of the Tract nominated for lease has been provided and corrected, where required, exclusively by the nomination party. Any mineral lease selected from this Tract and awarded by the Louisiana State Mineral Board shall be without warranty of any kind, either express, implied, or statutory, including, but not limited to, the implied warranties of merchantability and fitness for a particular purpose. Should the mineral lease awarded by the Louisiana State Mineral Board be subsequently modified, cancelled or abrogated due to the existence of conflicting leases, operating agreements, private claims or other future obligations or conditions which may affect all or any portion of the leased Tract, it shall not relieve the Lessee of the obligation to pay any bonus due thereon to the Louisiana State Mineral Board, nor shall the Louisiana State Mineral Board be obligated to refund any consideration paid by the Lessor prior to such modification, cancellation, or abrogation, including, but not limited to, bonuses, rentals and royalties.

NOTE: A minimum bonus of \$130.00 per acre and a minimum royalty of 21% will be required.

NOTE: The State of Louisiana does hereby reserve, and this lease shall be subject to, the imprescriptible right of surface use in the nature of a servitude in favor of the Department of Natural Resources, including its Offices and Commissions, for the sole purpose of implementing, constructing, servicing and maintaining approved coastal zone management and/or restoration projects. Utilization of any and all rights derived under this lease by the mineral lessee, its agents, successors or assigns, shall not interfere with nor hinder the reasonable surface use by the

Department of Natural Resources, its Offices or Commissions, as herein above reserved.

Applicant: Chris Roy

Bidder	Cash Payment	Price / Acre	Rental	Oil	Gas	Other

BLOCK CX0014

BLOCK CX0031

TR 35463  
2,497.27 +/- ACRES  
MAY, 2003

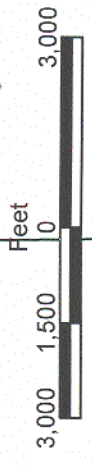
BLOCK CX0038

P.O.B.  
X=2,738,600.00  
Y=514,080.00

BLOCK CX0030

ST BERNARD PARISH

CHANDELEUR SOUND AREA ADDITION REV.



**TRACT 35464 - Portion of Block 31, Chandeleur Sound Area, Addition, Revised, St. Bernard Parish, Louisiana**

All of the lands now or formerly constituting the beds and bottoms of all water bodies of every nature and description, and all islands and other lands formed by accretion, where allowed by law, or by reliction, and excepting tax adjudicated lands, belonging to the State of Louisiana and not presently under mineral lease on May 14, 2003, situated in St. Bernard Parish, Louisiana, and more particularly described as follows: Beginning at a point on the North line of Block 31, Chandeleur Sound Area, Addition, Revised, having Coordinates of X = 2,745,975.00 and Y = 514,080.00; thence East 7,375.00 feet along the North line of said Block 31 to a point having Coordinates of X = 2,753,350.00 and Y = 514,080.00, being the Northeast corner of said Block 31; thence South 14,750.00 feet along the East line of said Block 31 to a point having Coordinates of X = 2,753,350.00 and Y = 499,330.00, being the Southeast corner of said Block 31; thence West 7,375.00 feet along the South line of said Block 31 to a point having Coordinates of X = 2,745,975.00 and Y = 499,330.00; thence North 14,750.00 feet to the point of beginning, containing approximately **2,497.27 acres**, all as more particularly outlined on a plat on file in the Office of Mineral Resources, Department of Natural Resources. All bearings, distances and coordinates are based on Louisiana Coordinate System of 1927, (North or South Zone), where applicable.

NOTE: The above description of the Tract nominated for lease has been provided and corrected, where required, exclusively by the nomination party. Any mineral lease selected from this Tract and awarded by the Louisiana State Mineral Board shall be without warranty of any kind, either express, implied, or statutory, including, but not limited to, the implied warranties of merchantability and fitness for a particular purpose. Should the mineral lease awarded by the Louisiana State Mineral Board be subsequently modified, cancelled or abrogated due to the existence of conflicting leases, operating agreements, private claims or other future obligations or conditions which may affect all or any portion of the leased Tract, it shall not relieve the Lessee of the obligation to pay any bonus due thereon to the Louisiana State Mineral Board, nor shall the Louisiana State Mineral Board be obligated to refund any consideration paid by the Lessor prior to such modification, cancellation, or abrogation, including, but not limited to, bonuses, rentals and royalties.

NOTE: A minimum bonus of \$130.00 per acre and a minimum royalty of 21% will be required.

NOTE: The State of Louisiana does hereby reserve, and this lease shall be subject to, the imprescriptible right of surface use in the nature of a servitude in favor of the Department of Natural Resources, including its Offices and Commissions, for the sole purpose of implementing, constructing, servicing and maintaining approved coastal zone management and/or restoration projects. Utilization of any and all rights derived under this lease by the mineral lessee, its agents, successors or assigns, shall not interfere with nor hinder the reasonable surface use by the

Department of Natural Resources, its Offices or Commissions, as herein above reserved.

Applicant: Chris Roy

Bidder	Cash Payment	Price / Acre	Rental	Oil	Gas	Other

BLOCK CX0014

BLOCK CX0032

TR 35464  
2,497.27 +/- ACRES  
MAY, 2003

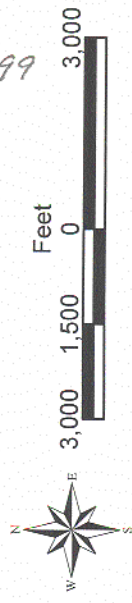
P.O.B.  
X=2,745,975.00  
Y=514,080.00

BLOCK CX0031

ST BERNARD PARISH

BLOCK CX0038

CHANDELEUR SOUND AREA ADDITION REV.



**TRACT 35465 - Portion of Block 41, Chandeleur Sound Area, St. Bernard Parish, Louisiana**

All of the lands now or formerly constituting the beds and bottoms of all water bodies of every nature and description, and all islands and other lands formed by accretion, where allowed by law, or by reliction, and excepting tax adjudicated lands, belonging to the State of Louisiana and not presently under mineral lease on May 14, 2003, situated in St. Bernard Parish, Louisiana, and more particularly described as follows: Beginning at a point on the West line of Block 41, Chandeleur Sound Area, having Coordinates of X = 2,664,850.00 and Y = 418,205.00; thence East 14,750.00 feet to a point intersecting the East line of said Block 41 having Coordinates of X = 2,679,600.00 and Y = 418,205.00; thence South 7,375.00 feet along the East line of said Block 41 to a point having Coordinates of X = 2,679,600.00 and Y = 410,830.00, being the Southeast corner of said Block 41; thence West 14,750.00 feet along the South line of said Block 41 to a point having Coordinates of X = 2,664,850.00 and Y = 410,830.00, being the Southwest corner of said Block 41; thence North 7,375.00 feet along the West line of said Block 41 to the point of beginning, containing approximately **2,497.27 acres**, all as more particularly outlined on a plat on file in the Office of Mineral Resources, Department of Natural Resources. All bearings, distances and coordinates are based on Louisiana Coordinate System of 1927, (North or South Zone), where applicable.

NOTE: The above description of the Tract nominated for lease has been provided and corrected, where required, exclusively by the nomination party. Any mineral lease selected from this Tract and awarded by the Louisiana State Mineral Board shall be without warranty of any kind, either express, implied, or statutory, including, but not limited to, the implied warranties of merchantability and fitness for a particular purpose. Should the mineral lease awarded by the Louisiana State Mineral Board be subsequently modified, cancelled or abrogated due to the existence of conflicting leases, operating agreements, private claims or other future obligations or conditions which may affect all or any portion of the leased Tract, it shall not relieve the Lessee of the obligation to pay any bonus due thereon to the Louisiana State Mineral Board, nor shall the Louisiana State Mineral Board be obligated to refund any consideration paid by the Lessor prior to such modification, cancellation, or abrogation, including, but not limited to, bonuses, rentals and royalties.

NOTE: A minimum bonus of \$190.00 per acre and a minimum royalty of 22% will be required.

NOTE: The State of Louisiana does hereby reserve, and this lease shall be subject to, the imprescriptible right of surface use in the nature of a servitude in favor of the Department of Natural Resources, including its Offices and Commissions, for the sole purpose of implementing, constructing, servicing and maintaining approved coastal zone management and/or restoration projects. Utilization of any and all rights derived under this lease by the mineral lessee, its agents, successors or assigns, shall not interfere with nor hinder the reasonable surface use by the

Department of Natural Resources, its Offices or Commissions, as herein above reserved.

Applicant: Chris Roy

Bidder	Cash Payment	Price / Acre	Rental	Oil	Gas	Other



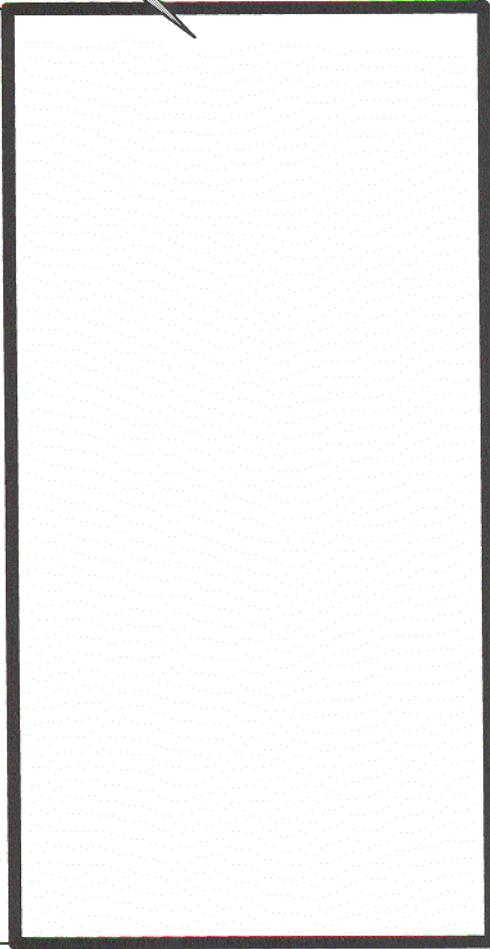
TR 35465  
2,497.27 +/- ACRES  
MAY, 2003

BLOCK CS0040

BLOCK CS0041

BLOCK CS0053

202



P.O.B.  
X=2,664,850.00  
Y=418,205.00

BLOCK CS0042

ST BERNARD PARISH

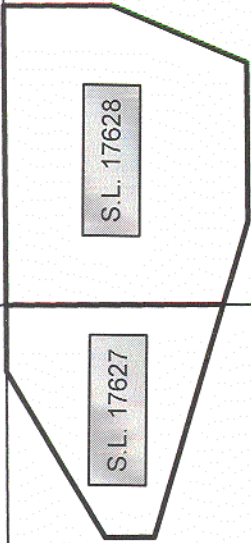
BLOCK CS0052

CHANDELEUR SOUND AREA

BLOCK CS0051

S.L. 17628

S.L. 17627



**TRACT 35466 - Portion of Block 52, Chandeleur Sound Area, St. Bernard Parish, Louisiana**

All of the lands now or formerly constituting the beds and bottoms of all water bodies of every nature and description, and all islands and other lands formed by accretion, where allowed by law, or by reliction, and excepting tax adjudicated lands, belonging to the State of Louisiana and not presently under mineral lease on May 14, 2003, situated in St. Bernard Parish, Louisiana, and more particularly described as follows: Beginning at a point having Coordinates of X = 2,664,850.00 and Y = 410,830.00, being the Northwest corner of Block 52, Chandeleur Sound Area; thence East 14,750.00 feet along the North line of said Block 52 to a point having Coordinates of X = 2,679,600.00 and Y = 410,830.00, being the Northeast corner of said Block 52; thence South 7,375.00 feet along the East line of said Block 52 to a point having Coordinates of X = 2,679,600.00 and Y = 403,455.00; thence West 14,750.00 feet to a point intersecting the West line of said Block 52 having Coordinates of X = 2,664,850.00 and Y = 403,455.00; thence North 7,375.00 feet along the West line of said Block 52 to the point of beginning, containing approximately **2,497.27 acres**, all as more particularly outlined on a plat on file in the Office of Mineral Resources, Department of Natural Resources. All bearings, distances and coordinates are based on Louisiana Coordinate System of 1927, (North or South Zone), where applicable.

NOTE: The above description of the Tract nominated for lease has been provided and corrected, where required, exclusively by the nomination party. Any mineral lease selected from this Tract and awarded by the Louisiana State Mineral Board shall be without warranty of any kind, either express, implied, or statutory, including, but not limited to, the implied warranties of merchantability and fitness for a particular purpose. Should the mineral lease awarded by the Louisiana State Mineral Board be subsequently modified, cancelled or abrogated due to the existence of conflicting leases, operating agreements, private claims or other future obligations or conditions which may affect all or any portion of the leased Tract, it shall not relieve the Lessee of the obligation to pay any bonus due thereon to the Louisiana State Mineral Board, nor shall the Louisiana State Mineral Board be obligated to refund any consideration paid by the Lessor prior to such modification, cancellation, or abrogation, including, but not limited to, bonuses, rentals and royalties.

NOTE: A minimum bonus of \$190.00 per acre and a minimum royalty of 22% will be required.

NOTE: The State of Louisiana does hereby reserve, and this lease shall be subject to, the imprescriptible right of surface use in the nature of a servitude in favor of the Department of Natural Resources, including its Offices and Commissions, for the sole purpose of implementing, constructing, servicing and maintaining approved coastal zone management and/or restoration projects. Utilization of any and all rights derived under this lease by the mineral lessee, its agents, successors or assigns, shall not interfere with nor hinder the reasonable surface use by the

Department of Natural Resources, its Offices or Commissions, as herein above reserved.

Applicant: Chris Roy

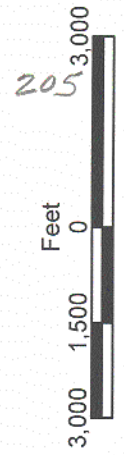
Bidder	Cash Payment	Price / Acre	Rental	Oil	Gas	Other

BLOCK CS0040

ST BERNARD PARISH

TR 35466  
2,497.27 +/- ACRES  
MAY, 2003

BLOCK CS0053



BLOCK CS0041



BLOCK CS0052

CHANDELEUR SOUND AREA

BLOCK CS0042

P.O.B.  
X=2,664,850.00  
Y=4,10,830.00

BLOCK CS0051

**TRACT 35467 - Portion of Block 40, Chandeleur Sound Area, St. Bernard Parish, Louisiana**

All of the lands now or formerly constituting the beds and bottoms of all water bodies of every nature and description, and all islands and other lands formed by accretion, where allowed by law, or by reliction, and excepting tax adjudicated lands, belonging to the State of Louisiana and not presently under mineral lease on May 14, 2003, situated in St. Bernard Parish, Louisiana, and more particularly described as follows: Beginning at a point on the West line of Block 40, Chandeleur Sound Area, having Coordinates of X = 2,679,600.00 and Y = 418,205.00; thence East 14,750.00 feet to a point intersecting the East line of said Block 40 having Coordinates of X = 2,694,350.00 and Y = 418,205.00; thence South 7,375.00 feet along the East line of said Block 40 to a point having Coordinates of X = 2,694,350.00 and Y = 410,830.00, being the Southeast corner of said Block 40; thence West 14,750.00 feet along the South line of said Block 40 to a point having Coordinates of X = 2,679,600.00 and Y = 410,830.00, being the Southwest corner of said Block 40; thence North 7,375.00 feet along the West line of said Block 40 to the point of beginning, containing approximately **2,497.27 acres**, all as more particularly outlined on a plat on file in the Office of Mineral Resources, Department of Natural Resources. All bearings, distances and coordinates are based on Louisiana Coordinate System of 1927, (North or South Zone), where applicable.

NOTE: The above description of the Tract nominated for lease has been provided and corrected, where required, exclusively by the nomination party. Any mineral lease selected from this Tract and awarded by the Louisiana State Mineral Board shall be without warranty of any kind, either express, implied, or statutory, including, but not limited to, the implied warranties of merchantability and fitness for a particular purpose. Should the mineral lease awarded by the Louisiana State Mineral Board be subsequently modified, cancelled or abrogated due to the existence of conflicting leases, operating agreements, private claims or other future obligations or conditions which may affect all or any portion of the leased Tract, it shall not relieve the Lessee of the obligation to pay any bonus due thereon to the Louisiana State Mineral Board, nor shall the Louisiana State Mineral Board be obligated to refund any consideration paid by the Lessor prior to such modification, cancellation, or abrogation, including, but not limited to, bonuses, rentals and royalties.

NOTE: A minimum bonus of \$230.00 per acre and a minimum royalty of 23% will be required.

NOTE: The State of Louisiana does hereby reserve, and this lease shall be subject to, the imprescriptible right of surface use in the nature of a servitude in favor of the Department of Natural Resources, including its Offices and Commissions, for the sole purpose of implementing, constructing, servicing and maintaining approved coastal zone management and/or restoration projects. Utilization of any and all rights derived under this lease by the mineral lessee, its agents, successors or assigns, shall not interfere with nor hinder the reasonable surface use by the

Department of Natural Resources, its Offices or Commissions, as herein above reserved.

Applicant: Chris Roy

Bidder	Cash Payment	Price / Acre	Rental	Oil	Gas	Other

ST BERNARD PARISH

BLOCK CS0039

BLOCK CS0040

BLOCK CS0041

P.O.B.  
X=2,679,600.00  
Y=418,205.00

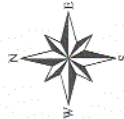
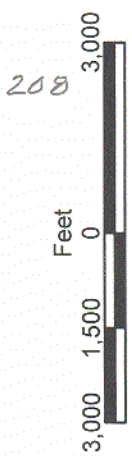
TR 35467  
2,497.27 +/- ACRES  
MAY, 2003

BLOCK CS0054

BLOCK CS0053

CHANDELEUR SOUND AREA

BLOCK CS0052





**TRACT 35468 - Portion of Block 53, Chandeleur Sound Area, St. Bernard Parish, Louisiana**

All of the lands now or formerly constituting the beds and bottoms of all water bodies of every nature and description, and all islands and other lands formed by accretion, where allowed by law, or by reliction, and excepting tax adjudicated lands, belonging to the State of Louisiana and not presently under mineral lease on May 14, 2003, situated in St. Bernard Parish, Louisiana, and more particularly described as follows: Beginning at a point having Coordinates of X = 2,679,600.00 and Y = 410,830.00, being the Northwest corner of Block 53, Chandeleur Sound Area; thence East 14,750.00 feet along the North line of said Block 53 to a point having Coordinates of X = 2,694,350.00 and Y = 410,830.00, being the Northeast corner of said Block 53; thence South 7,375.00 feet along the East line of said Block 53 to a point having Coordinates of X = 2,694,350.00 and Y = 403,455.00; thence West 14,750.00 feet to a point intersecting the West line of said Block 53 having Coordinates of X = 2,679,600.00 and Y = 403,455.00; thence North 7,375.00 feet along the West line of said Block 53 to the point of beginning, containing approximately **2,497.27 acres**, all as more particularly outlined on a plat on file in the Office of Mineral Resources, Department of Natural Resources. All bearings, distances and coordinates are based on Louisiana Coordinate System of 1927, (North or South Zone), where applicable.

NOTE: The above description of the Tract nominated for lease has been provided and corrected, where required, exclusively by the nomination party. Any mineral lease selected from this Tract and awarded by the Louisiana State Mineral Board shall be without warranty of any kind, either express, implied, or statutory, including, but not limited to, the implied warranties of merchantability and fitness for a particular purpose. Should the mineral lease awarded by the Louisiana State Mineral Board be subsequently modified, cancelled or abrogated due to the existence of conflicting leases, operating agreements, private claims or other future obligations or conditions which may affect all or any portion of the leased Tract, it shall not relieve the Lessee of the obligation to pay any bonus due thereon to the Louisiana State Mineral Board, nor shall the Louisiana State Mineral Board be obligated to refund any consideration paid by the Lessor prior to such modification, cancellation, or abrogation, including, but not limited to, bonuses, rentals and royalties.

NOTE: A minimum bonus of \$190.00 per acre and a minimum royalty of 22% will be required.

NOTE: The State of Louisiana does hereby reserve, and this lease shall be subject to, the imprescriptible right of surface use in the nature of a servitude in favor of the Department of Natural Resources, including its Offices and Commissions, for the sole purpose of implementing, constructing, servicing and maintaining approved coastal zone management and/or restoration projects. Utilization of any and all rights derived under this lease by the mineral lessee, its agents, successors or assigns, shall not interfere with nor hinder the reasonable surface use by the



Department of Natural Resources, its Offices or Commissions, as herein above reserved.

Applicant: Chris Roy

Bidder	Cash Payment	Price / Acre	Rental	Oil	Gas	Other

BLOCK CS0039

BLOCK CS0040

BLOCK CS0041

P.O.B.  
X=2,679,600.00  
Y=410,830.00

TR 35468  
2,497.27 +/- ACRES  
MAY 2003

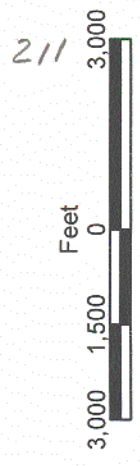
ST BERNARD PARISH

BLOCK CS0054

BLOCK CS0053

BLOCK CS0052

CHANDELEUR SOUND AREA



**TRACT 35469 - Portion of Block 30, Chandeleur Sound Area, St. Bernard Parish, Louisiana**

All of the lands now or formerly constituting the beds and bottoms of all water bodies of every nature and description, and all islands and other lands formed by accretion, where allowed by law, or by reliction, and excepting tax adjudicated lands, belonging to the State of Louisiana and not presently under mineral lease on May 14, 2003, situated in St. Bernard Parish, Louisiana, and more particularly described as follows: Beginning at a point on the West line of Block 30, Chandeleur Sound Area, having Coordinates of X = 2,723,850.00 and Y = 432,955.00; thence East 14,750.00 feet to a point intersecting the East line of said Block 30 having Coordinates of X = 2,738,600.00 and Y = 432,955.00; thence South 7,375.00 feet along the East line of said Block 30 to a point having Coordinates of X = 2,738,600.00 and Y = 425,580.00, being the Southeast corner of said Block 30; thence West 14,750.00 feet along the South line of said Block 30 to a point having Coordinates of X = 2,723,850.00 and Y = 425,580.00, being the Southwest corner of said Block 30; thence North 7,375.00 feet along the West line of said Block 30 to the point of beginning, containing approximately **2,497.27 acres**, all as more particularly outlined on a plat on file in the Office of Mineral Resources, Department of Natural Resources. All bearings, distances and coordinates are based on Louisiana Coordinate System of 1927, (North or South Zone), where applicable.

NOTE: The above description of the Tract nominated for lease has been provided and corrected, where required, exclusively by the nomination party. Any mineral lease selected from this Tract and awarded by the Louisiana State Mineral Board shall be without warranty of any kind, either express, implied, or statutory, including, but not limited to, the implied warranties of merchantability and fitness for a particular purpose. Should the mineral lease awarded by the Louisiana State Mineral Board be subsequently modified, cancelled or abrogated due to the existence of conflicting leases, operating agreements, private claims or other future obligations or conditions which may affect all or any portion of the leased Tract, it shall not relieve the Lessee of the obligation to pay any bonus due thereon to the Louisiana State Mineral Board, nor shall the Louisiana State Mineral Board be obligated to refund any consideration paid by the Lessor prior to such modification, cancellation, or abrogation, including, but not limited to, bonuses, rentals and royalties.

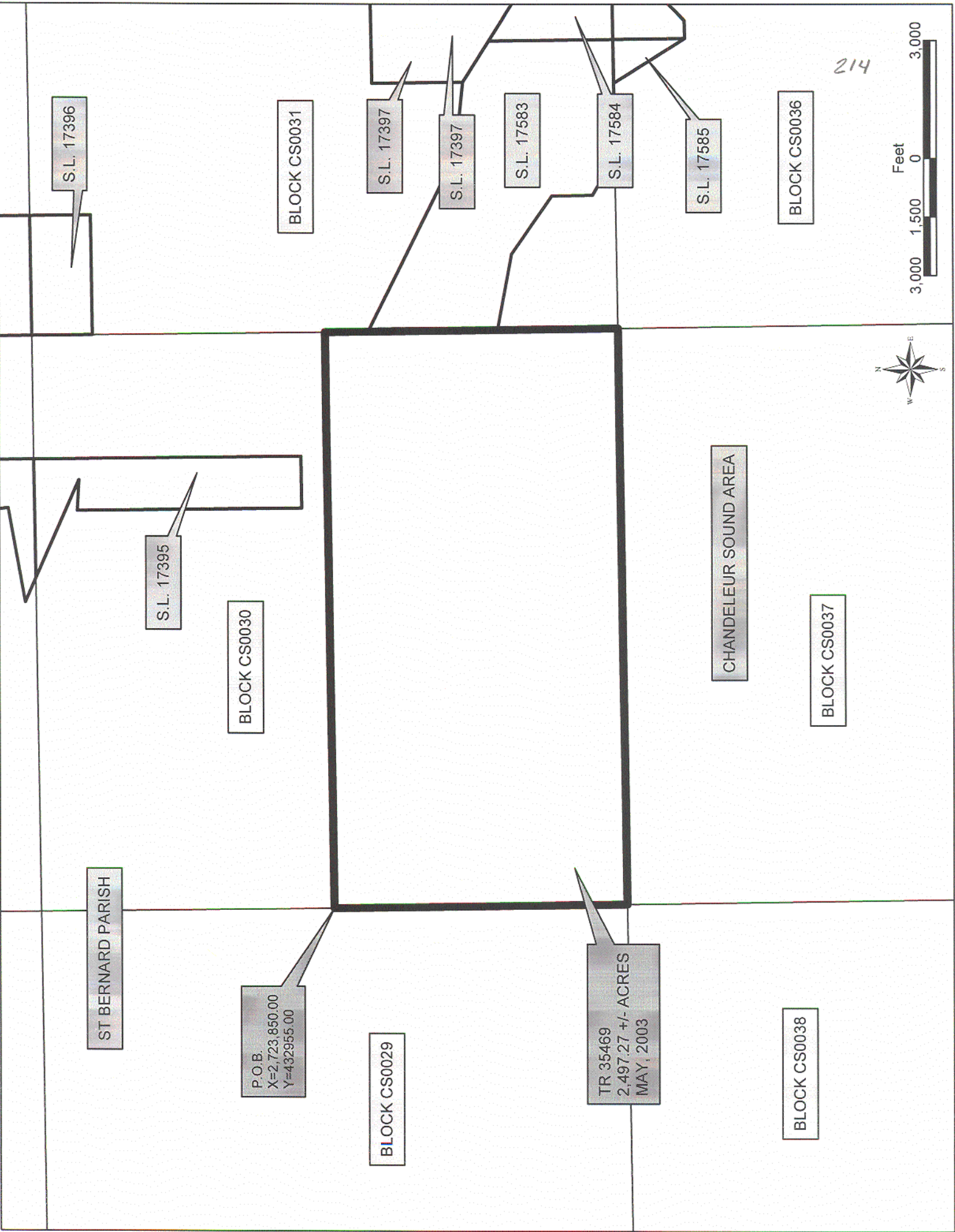
NOTE: A minimum bonus of \$230.00 per acre and a minimum royalty of 23% will be required.

NOTE: The State of Louisiana does hereby reserve, and this lease shall be subject to, the imprescriptible right of surface use in the nature of a servitude in favor of the Department of Natural Resources, including its Offices and Commissions, for the sole purpose of implementing, constructing, servicing and maintaining approved coastal zone management and/or restoration projects. Utilization of any and all rights derived under this lease by the mineral lessee, its agents, successors or assigns, shall not interfere with nor hinder the reasonable surface use by the

Department of Natural Resources, its Offices or Commissions, as herein above reserved.

Applicant: Chris Roy

Bidder	Cash Payment	Price / Acre	Rental	Oil	Gas	Other



S.L. 17396

BLOCK CS0031

S.L. 17397

S.L. 17397

S.L. 17583

S.L. 17584

S.L. 17585

BLOCK CS0036

214

S.L. 17395

BLOCK CS0030

CHANDELEUR SOUND AREA

BLOCK CS0037

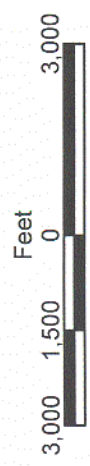
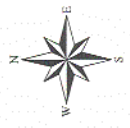
ST BERNARD PARISH

P.O.B.  
X=2,723,850.00  
Y=432955.00

BLOCK CS0029

TR 35469  
2,497.27 +/- ACRES  
MAY, 2003

BLOCK CS0038



**TRACT 35470 - Portion of Block 37, Chandeleur Sound Area, St. Bernard Parish, Louisiana**

All of the lands now or formerly constituting the beds and bottoms of all water bodies of every nature and description, and all islands and other lands formed by accretion, where allowed by law, or by reliction, and excepting tax adjudicated lands, belonging to the State of Louisiana and not presently under mineral lease on May 14, 2003, situated in St. Bernard Parish, Louisiana, and more particularly described as follows: Beginning at a point having Coordinates of X = 2,723,850.00 and Y = 425,580.00, being the Northwest corner of Block 37, Chandeleur Sound Area; thence East 14,750.00 feet along the North line of said Block 37 to a point having Coordinates of X = 2,738,600.00 and Y = 425,580.00, being the Northeast corner of said Block 37; thence South 7,375.00 feet along the East line of said Block 37 to a point having Coordinates of X = 2,738,600.00 and Y = 418,205.00; thence West 14,750.00 feet to a point intersecting the West line of said Block 37 having Coordinates of X = 2,723,850.00 and Y = 418,205.00; thence North 7,375.00 feet along the West line of said Block 37 to the point of beginning, containing approximately **2,497.27 acres**, all as more particularly outlined on a plat on file in the Office of Mineral Resources, Department of Natural Resources. All bearings, distances and coordinates are based on Louisiana Coordinate System of 1927, (North or South Zone), where applicable.

NOTE: The above description of the Tract nominated for lease has been provided and corrected, where required, exclusively by the nomination party. Any mineral lease selected from this Tract and awarded by the Louisiana State Mineral Board shall be without warranty of any kind, either express, implied, or statutory, including, but not limited to, the implied warranties of merchantability and fitness for a particular purpose. Should the mineral lease awarded by the Louisiana State Mineral Board be subsequently modified, cancelled or abrogated due to the existence of conflicting leases, operating agreements, private claims or other future obligations or conditions which may affect all or any portion of the leased Tract, it shall not relieve the Lessee of the obligation to pay any bonus due thereon to the Louisiana State Mineral Board, nor shall the Louisiana State Mineral Board be obligated to refund any consideration paid by the Lessor prior to such modification, cancellation, or abrogation, including, but not limited to, bonuses, rentals and royalties.

NOTE: A minimum bonus of \$230.00 per acre and a minimum royalty of 23% will be required.

NOTE: The State of Louisiana does hereby reserve, and this lease shall be subject to, the imprescriptible right of surface use in the nature of a servitude in favor of the Department of Natural Resources, including its Offices and Commissions, for the sole purpose of implementing, constructing, servicing and maintaining approved coastal zone management and/or restoration projects. Utilization of any and all rights derived under this lease by the mineral lessee, its agents, successors or assigns, shall not interfere with nor hinder the reasonable surface use by the

Department of Natural Resources, its Offices or Commissions, as herein above reserved.

Applicant: Chris Roy

Bidder	Cash Payment	Price / Acre	Rental	Oil	Gas	Other



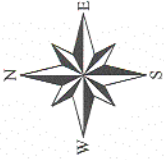
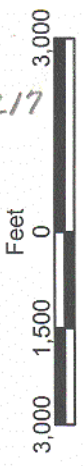
BLOCK CS0031

SL 17583

TR 35470  
2,497.27 +/- ACRES  
MAY, 2003

BLOCK CS0036

217



BLOCK CS0030

ST BERNARD PARISH

BLOCK CS0037

CHANDELEUR SOUND AREA

BLOCK CS0029

P.O.B.  
X=2,723,850.00  
Y=425,580.00

BLOCK CS0038



**TRACT 35471 - Portion of Block 37, Chandeleur Sound Area, St. Bernard Parish, Louisiana**

All of the lands now or formerly constituting the beds and bottoms of all water bodies of every nature and description, and all islands and other lands formed by accretion, where allowed by law, or by reliction, and excepting tax adjudicated lands, belonging to the State of Louisiana and not presently under mineral lease on May 14, 2003, situated in St. Bernard Parish, Louisiana, and more particularly described as follows: Beginning at a point on the West line of Block 37, Chandeleur Sound Area, having Coordinates of X = 2,723,850.00 and Y = 418,205.00; thence East 14,750.00 feet to a point intersecting the East line of said Block 37 having Coordinates of X = 2,738,600.00 and Y = 418,205.00; thence South 7,375.00 feet along the East line of said Block 37 to a point having Coordinates of X = 2,738,600.00 and Y = 410,830.00, being the Southeast corner of said Block 37; thence West 14,750.00 feet along the South line of said Block 37 to a point having Coordinates of X = 2,723,850.00 and Y = 410,830.00, being the Southwest corner of said Block 37; thence North 7,375.00 feet along the West line of said Block 37 to the point of beginning, containing approximately **2,497.27 acres**, all as more particularly outlined on a plat on file in the Office of Mineral Resources, Department of Natural Resources. All bearings, distances and coordinates are based on Louisiana Coordinate System of 1927, (North or South Zone), where applicable.

NOTE: The above description of the Tract nominated for lease has been provided and corrected, where required, exclusively by the nomination party. Any mineral lease selected from this Tract and awarded by the Louisiana State Mineral Board shall be without warranty of any kind, either express, implied, or statutory, including, but not limited to, the implied warranties of merchantability and fitness for a particular purpose. Should the mineral lease awarded by the Louisiana State Mineral Board be subsequently modified, cancelled or abrogated due to the existence of conflicting leases, operating agreements, private claims or other future obligations or conditions which may affect all or any portion of the leased Tract, it shall not relieve the Lessee of the obligation to pay any bonus due thereon to the Louisiana State Mineral Board, nor shall the Louisiana State Mineral Board be obligated to refund any consideration paid by the Lessor prior to such modification, cancellation, or abrogation, including, but not limited to, bonuses, rentals and royalties.

NOTE: A minimum bonus of \$230.00 per acre and a minimum royalty of 23% will be required.

NOTE: The State of Louisiana does hereby reserve, and this lease shall be subject to, the imprescriptible right of surface use in the nature of a servitude in favor of the Department of Natural Resources, including its Offices and Commissions, for the sole purpose of implementing, constructing, servicing and maintaining approved coastal zone management and/or restoration projects. Utilization of any and all rights derived under this lease by the mineral lessee, its agents, successors or assigns, shall not interfere with nor hinder the reasonable surface use by the

Department of Natural Resources, its Offices or Commissions, as herein above reserved.

Applicant: Chris Roy

Bidder	Cash Payment	Price / Acre	Rental	Oil	Gas	Other

BLOCK CS0036

BLOCK CS0037

ST BERNARD PARISH

BLOCK CS0038

TR 35471  
2,497.27 +/- ACRES  
MAY, 2003

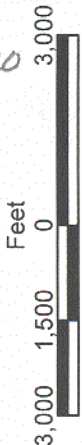
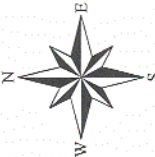
P.O.B.  
X=2,723,850.00  
Y=418,205.00

BLOCK CS0057

BLOCK CS0056

CHANDELEUR SOUND AREA

BLOCK CS0055



**TRACT 35472 - Portion of Block 28, Breton Sound Area, Plaquemines Parish, Louisiana**

All of the lands now or formerly constituting the beds and bottoms of all water bodies of every nature and description, and all islands and other lands formed by accretion, where allowed by law, or by reliction, and excepting tax adjudicated lands, belonging to the State of Louisiana and not presently under mineral lease on May 14, 2003, situated in Plaquemines Parish, Louisiana, and more particularly described as follows: Beginning at a point having Coordinates of X = 2,709,100.00 and Y = 322,330.00, said point also being the Southeast corner of Block 28, Breton Sound Area; thence West 6,460.00 feet on and along the South line of said Block 28 to a point having Coordinates of X = 2,702,640.00 and Y = 322,330.00, said point also being on an Eastern boundary of State Lease No. 1999, as amended; thence on and along the Eastern and Southern boundaries of said State Lease No. 1999 the following courses and distances: North 5,200.00 feet to a point having Coordinates of X = 2,702,640.00 and Y = 327,530.00; and East 6,460.00 feet to a point having Coordinates of X = 2,709,100.00 and Y = 327,530.00, said point also being on the East line of said Block 28; thence South 5,200.00 feet on and along said East line of said Block 28 to the point of beginning, containing approximately **771.17 acres**, all as more particularly outlined on a plat on file in the Office of Mineral Resources, Department of Natural Resources. All bearings, distances and coordinates are based on Louisiana Coordinate System of 1927, (North or South Zone), where applicable.

NOTE: The above description of the Tract nominated for lease has been provided and corrected, where required, exclusively by the nomination party. Any mineral lease selected from this Tract and awarded by the Louisiana State Mineral Board shall be without warranty of any kind, either express, implied, or statutory, including, but not limited to, the implied warranties of merchantability and fitness for a particular purpose. Should the mineral lease awarded by the Louisiana State Mineral Board be subsequently modified, cancelled or abrogated due to the existence of conflicting leases, operating agreements, private claims or other future obligations or conditions which may affect all or any portion of the leased Tract, it shall not relieve the Lessee of the obligation to pay any bonus due thereon to the Louisiana State Mineral Board, nor shall the Louisiana State Mineral Board be obligated to refund any consideration paid by the Lessor prior to such modification, cancellation, or abrogation, including, but not limited to, bonuses, rentals and royalties.

NOTE: The State of Louisiana does hereby reserve, and this lease shall be subject to, the imprescriptible right of surface use in the nature of a servitude in favor of the Department of Natural Resources, including its Offices and Commissions, for the sole purpose of implementing, constructing, servicing and maintaining approved coastal zone management and/or restoration projects. Utilization of any and all rights derived under this lease by the mineral lessee, its agents, successors or assigns, shall not interfere with nor hinder the reasonable surface use by the

Department of Natural Resources, its Offices or Commissions, as herein above reserved.

Applicant: Robert A. Schroeder, Inc.

Bidder	Cash Payment	Price / Acre	Rental	Oil	Gas	Other

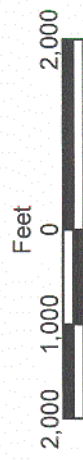
223

SL 4574

BLOCK BS0027

BLOCK BS0038

P.O.B.  
X=2,709,100.00  
Y=322,330.00



PLAQUEMINES PARISH

SL 1999

BRETON SOUND AREA

TR 35472  
771.17 +/- ACRES  
MAY, 2003

SL 4409

BLOCK BS0028

BLOCK BS0037

**TRACT 35473 - Portion of Block 27, Breton Sound Area, Plaquemines Parish, Louisiana**

All of the lands now or formerly constituting the beds and bottoms of all water bodies of every nature and description, and all islands and other lands formed by accretion, where allowed by law, or by reliction, and excepting tax adjudicated lands, belonging to the State of Louisiana and not presently under mineral lease on May 14, 2003, situated in Plaquemines Parish, Louisiana, and more particularly described as follows: Beginning at a point having Coordinates of X = 2,709,100.00 and Y = 322,330.00, said point also being the Southwest corner of Block 27, Breton Sound Area; thence North 5,200.00 feet on and along the West line of said Block 27 to a point having Coordinates of X = 2,709,100.00 and Y = 327,530.00, said point also being on a Southern boundary of State Lease No. 4574, as amended; thence on and along the Southern and Eastern boundaries of said State Lease No. 4574 and on and along the Southern and Eastern boundaries of State Lease No. 15958 the following courses and distances: East 7,500.00 feet to a point having Coordinates of X = 2,716,600.00 and Y = 327,530.00, said point also being the Southwest corner of said State Lease No. 15958; East 3,600.00 feet to a point having Coordinates of X = 2,720,200.00 and Y = 327,530.00, said point also being the Southeast corner of said State Lease No. 15958; North 5,500.00 feet to a point having Coordinates of X = 2,720,200.00 and Y = 333,030.00, said point also being the Northeast corner of said State Lease No. 15958; North 28 degrees 30 minutes 40 seconds East 4,608.95 feet to a point having Coordinates of X = 2,722,400.00 and Y = 337,080.00, said point also being on the North line of said Block 27; thence East 1,450.00 feet on and along said North line of said Block 27 to a point having Coordinates of X = 2,723,850.00 and Y = 337,080.00, said point also being the Northeast corner of said Block 27; thence South 6,340.17 feet on and along said East line of said Block 27 to a point having Coordinates of X = 2,723,850.00 and Y = 330,739.83; thence South 44 degrees 16 minutes 54 seconds West 2,189.96 feet to a point having Coordinates of X = 2,722,321.00 and Y = 329,172.00; thence South 34 degrees 10 minutes 44 seconds West 2,892.59 feet to a point having Coordinates of X = 2,720,696.00 and Y = 326,779.00; thence South 31 degrees 07 minutes 15 seconds West 5,196.95 feet to a point having Coordinates of X = 2,718,009.98 and Y = 322,330.00, said point also being on the South line of said Block 27; thence West 8,909.98 feet on and along said South line of said Block 27 to the point of beginning, containing approximately **1,843.29 acres**, all as more particularly outlined on a plat on file in the Office of Mineral Resources, Department of Natural Resources. All bearings, distances and coordinates are based on Louisiana Coordinate System of 1927, (North or South Zone), where applicable.

NOTE: The above description of the Tract nominated for lease has been provided and corrected, where required, exclusively by the nomination party. Any mineral lease selected from this Tract and awarded by the Louisiana State Mineral Board shall be without warranty of any kind, either express, implied, or statutory, including, but not limited to, the implied warranties of merchantability and fitness for a particular

purpose. Should the mineral lease awarded by the Louisiana State Mineral Board be subsequently modified, cancelled or abrogated due to the existence of conflicting leases, operating agreements, private claims or other future obligations or conditions which may affect all or any portion of the leased Tract, it shall not relieve the Lessee of the obligation to pay any bonus due thereon to the Louisiana State Mineral Board, nor shall the Louisiana State Mineral Board be obligated to refund any consideration paid by the Lessor prior to such modification, cancellation, or abrogation, including, but not limited to, bonuses, rentals and royalties.

NOTE: The State of Louisiana does hereby reserve, and this lease shall be subject to, the imprescriptible right of surface use in the nature of a servitude in favor of the Department of Natural Resources, including its Offices and Commissions, for the sole purpose of implementing, constructing, servicing and maintaining approved coastal zone management and/or restoration projects. Utilization of any and all rights derived under this lease by the mineral lessee, its agents, successors or assigns, shall not interfere with nor hinder the reasonable surface use by the Department of Natural Resources, its Offices or Commissions, as herein above reserved.

Applicant: Robert A. Schroeder, Inc.

Bidder	Cash Payment	Price / Acre	Rental	Oil	Gas	Other

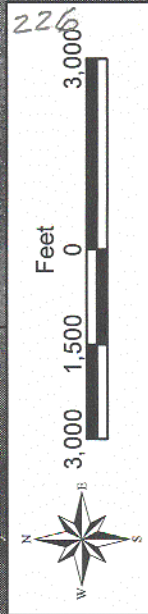


BLOCK BS0023

BLOCK BS0026

BLOCK BS0039

PLAQUEMINES PARISH



BLOCK BS0022

SL 4574

SL 15958

BLOCK BS0038

BRETON SOUND AREA

BLOCK BS0027

TR 35473  
1,843.29 +/- ACRES  
MAY, 2003

BLOCK BS0021

SL 1999

P.O.B.  
X=2,709,100.00  
Y=322,330.00

BLOCK BS0037

BLOCK BS0028



**TRACT 35474 - Avoyelles and Concordia Parishes, Louisiana**

All of the lands now or formerly constituting the beds and bottoms of all water bodies of every nature and description, and all islands and other lands formed by accretion, where allowed by law, or by reliction, and excepting tax adjudicated lands, belonging to the State of Louisiana and not presently under mineral lease on May 14, 2003, situated in Avoyelles and Concordia Parishes, Louisiana, and more particularly described as follows: Beginning at a point on the boundary of Red River Wildlife Management Area having Coordinates of X = 2,253,117.92 and Y = 203,364.09; thence along the said boundary of Red River Wildlife Management Areas the following courses: South 83 degrees 13 minutes 17 seconds East 849.43 feet to a point having Coordinates of X = 2,253,961.41 and Y = 203,263.83, South 01 degrees 08 minutes 26 seconds East 3,452.48 feet to a point having Coordinates of X = 2,254,030.14 and Y = 199,812.03, South 89 degrees 45 minutes 18 seconds East 958.94 feet to a point having Coordinates of X = 2,254,989.07 and Y = 199,807.93, South 0.38 feet to a point having Coordinates of X = 2,254,989.07 and Y = 199,807.55, South 89 degrees 44 minutes 57 seconds East 479.85 feet to a point having Coordinates of X = 2,255,468.92 and Y = 199,805.45; thence in a Southeasterly direction along the boundary of said Red River Wildlife Management Area, to a point having Coordinates of X = 2,256,989.81 and Y = 194,605.87; thence along the said boundary of Red River Wildlife Management Area South 00 degrees 17 minutes 34 seconds East 763.39 feet to a point having Coordinates of X = 2,256,993.71 and Y = 193,842.49; thence in a Southwesterly direction along the boundary of said Red River Wildlife Management Area, to a point having Coordinates of X = 2,256,274.48 and Y = 191,950.76; thence in a Northwesterly direction along the boundary of said Red River Wildlife Management Area, to a point having Coordinates of X = 2,253,219.93 and Y = 195,440.15; thence North 00 degrees 44 minutes 15 seconds West 7,924.60 feet to the point of beginning, **LESS AND EXCEPT**, if any, that portion of State Lease No. 13398, as amended, and State Lease 12894, as amended, that may lie within the above described tract, containing approximately **10 acres**, all as more particularly outlined on a plat on file in the Office of Mineral Resources, Department of Natural Resources. All bearings, distances and coordinates are based on Louisiana Coordinate System of 1927, (North or South Zone), where applicable.

NOTE: The above description of the Tract nominated for lease has been provided and corrected, where required, exclusively by the nomination party. Any mineral lease selected from this Tract and awarded by the Louisiana State Mineral Board shall be without warranty of any kind, either express, implied, or statutory, including, but not limited to, the implied warranties of merchantability and fitness for a particular purpose. Should the mineral lease awarded by the Louisiana State Mineral Board be subsequently modified, cancelled or abrogated due to the existence of conflicting leases, operating agreements, private claims or other future obligations or conditions which may affect all or any portion of the leased Tract, it shall not relieve the Lessee of the obligation to pay any bonus due thereon to the Louisiana State Mineral Board, nor shall the Louisiana State Mineral Board be obligated to refund any consideration

paid by the Lessor prior to such modification, cancellation, or abrogation, including, but not limited to, bonuses, rentals and royalties.

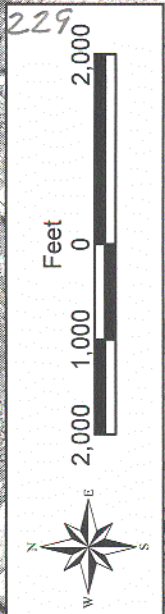
NOTE: The mineral lease is located in the Red River Wildlife Management Area under the jurisdiction of the Louisiana Department of Wildlife and Fisheries which has promulgated rules and regulations for the protection of game and wildlife on the aforesaid Tract and, therefore, shall be subject to said rules and regulations, a copy of which shall be attached to the mineral lease. In addition to the specific rules and regulations applicable, the following shall apply regarding operations under this mineral lease:

1. No activities will be allowed without written authorization from the Louisiana Department of Wildlife and Fisheries.
2. Projects will be evaluated on a case by case basis. Modifications to projects may be required including, but not limited to, access routes, spoil placement, well sites, flow lines and other appurtenant structures.
3. Mitigation will be required to offset avoidable wetland impacts.
4. Removal of all structures, facilities and equipment will be required within 120 days of abandonment unless otherwise agreed to by the Louisiana Department of Wildlife and Fisheries.
5. Prior to submitting applications for wetland permits to Federal and State permitting agencies the lease holder shall coordinate project details with the Louisiana Department of Wildlife and Fisheries, Fur and Refuge Division. Contact person for the Department will be Mike Windham at (504) 568-5886.

Applicant: Stephen M. Jenkins, Inc.

Bidder	Cash Payment	Price / Acre	Rental	Oil	Gas	Other





RED RIVER WMA

CONCORDIA PARISH

T3N R8E

S.L. 13398

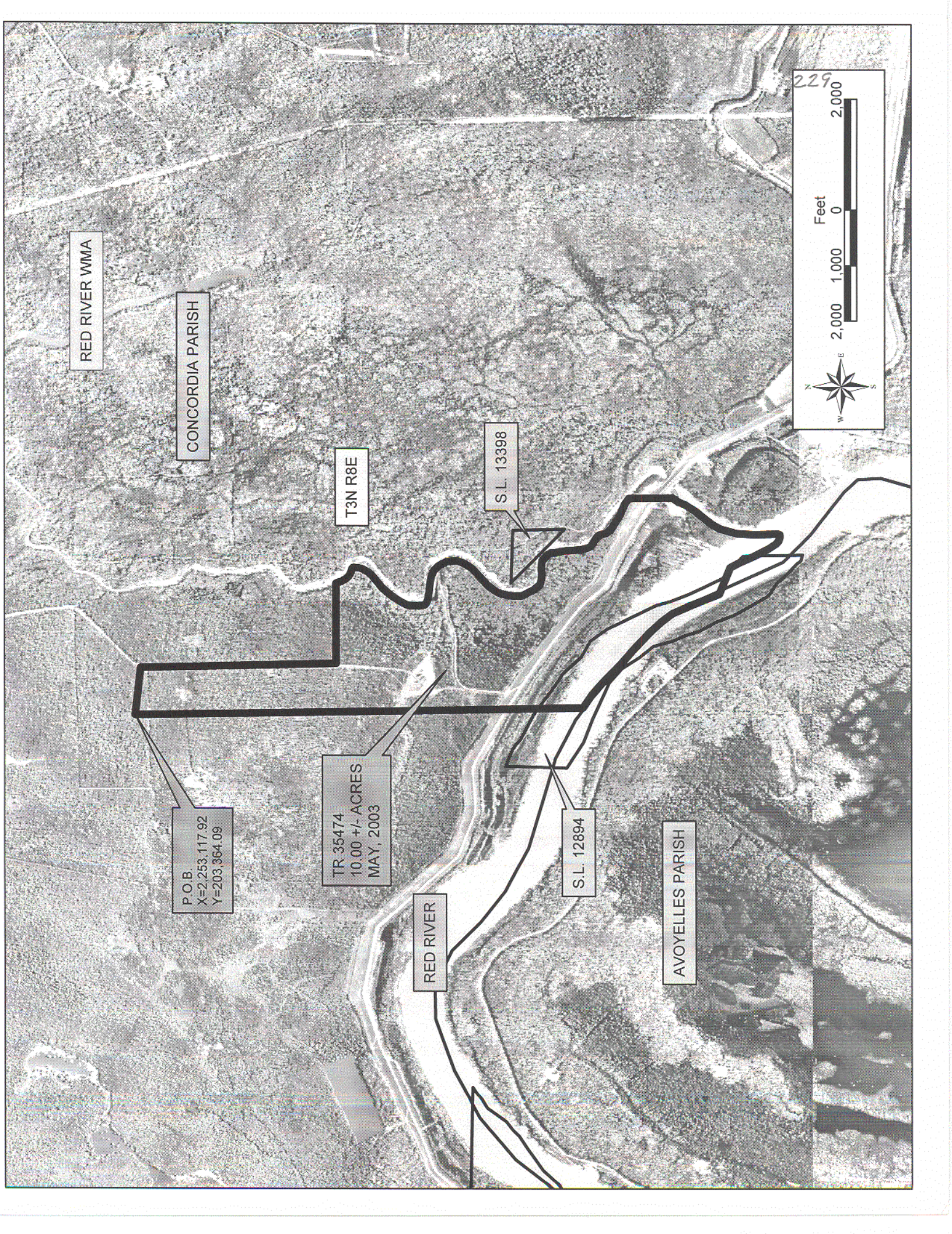
P.O.B.  
X=2,253,117.92  
Y=203,364.09

TR 35474  
10.00 +/- ACRES  
MAY, 2003

S.L. 12894

RED RIVER

AVOUELLES PARISH





TRACT 35475 - WITHDRAWN