

**TRACT 35427 - St. Bernard Parish, Louisiana**

All of the lands now or formerly constituting the beds and bottoms of all water bodies of every nature and description, and all islands and other lands formed by accretion, where allowed by law, or by reliction, and excepting tax adjudicated lands, belonging to the State of Louisiana and not presently under mineral lease on May 14, 2003, situated in St. Bernard Parish, Louisiana, and more particularly described as follows: Beginning at a point having Coordinates of X = 2,561,700.00 and Y = 501,215.00; thence South approximately 12,416 feet to a point on the Eastern shoreline of Lake Borgne, being the boundary of the Biloxi Wildlife Management Area; thence Southwesterly along the Eastern shoreline of Lake Borgne, being the boundary of the said Biloxi Wildlife Management Area to a point of intersection with a North-South line having a Coordinate of X = 2,554,970.00; thence North approximately 15,339 feet to a point having Coordinates of X = 2,554,970.00 and Y = 501,215.00; thence East 6,730.00 feet to the point of beginning, **LESS AND EXCEPT** that portion of the Biloxi Wildlife Management Area that may lie within the above described tract, containing approximately **2,086 acres**, all as more particularly outlined on a plat on file in the Office of Mineral Resources, Department of Natural Resources. All bearings, distances and coordinates are based on Louisiana Coordinate System of 1927, (North or South Zone), where applicable.

NOTE: The above description of the Tract nominated for lease has been provided and corrected, where required, exclusively by the nomination party. Any mineral lease selected from this Tract and awarded by the Louisiana State Mineral Board shall be without warranty of any kind, either express, implied, or statutory, including, but not limited to, the implied warranties of merchantability and fitness for a particular purpose. Should the mineral lease awarded by the Louisiana State Mineral Board be subsequently modified, cancelled or abrogated due to the existence of conflicting leases, operating agreements, private claims or other future obligations or conditions which may affect all or any portion of the leased Tract, it shall not relieve the Lessee of the obligation to pay any bonus due thereon to the Louisiana State Mineral Board, nor shall the Louisiana State Mineral Board be obligated to refund any consideration paid by the Lessor prior to such modification, cancellation, or abrogation, including, but not limited to, bonuses, rentals and royalties.

NOTE: A minimum bonus of \$230.00 per acre and a minimum royalty of 23% will be required.

NOTE: The Department of Wildlife and Fisheries has designated certain areas in the coastal waters of the State of Louisiana as Oyster Seed Bed Areas. The exact location of those Seed Bed Areas must be obtained from the Department of Wildlife and Fisheries and any work done under a mineral lease from the State of Louisiana may necessarily be conducted in conformity with the rules and regulations promulgated by the said Department of Wildlife and Fisheries for Oyster Seed Bed Areas.

NOTE: The State of Louisiana does hereby reserve, and this lease shall be subject to, the imprescriptible right of surface use in the nature of a servitude in favor of the Department of Natural Resources, including its Offices and Commissions, for the sole purpose of implementing, constructing, servicing and maintaining approved coastal zone management and/or restoration projects. Utilization of any and all rights derived under this lease by the mineral lessee, its agents, successors or assigns, shall not interfere with nor hinder the reasonable surface use by the Department of Natural Resources, its Offices or Commissions, as herein above reserved.

Applicant: Harold J. Anderson, Inc.

Bidder	Cash Payment	Price / Acre	Rental	Oil	Gas	Other

LAKE BORGNE

ST BERNARD PARISH

TR 35427  
2,086.00 +/- ACRES  
MAY, 2003

P.O.B  
X=2,561,700.00  
Y=501,215.00

BILOXI WMA

T12S - R17E

T12S - R16E



**TRACT 35428 - St. Bernard Parish, Louisiana**

All of the lands now or formerly constituting the beds and bottoms of all water bodies of every nature and description, and all islands and other lands formed by accretion, where allowed by law, or by reliction, and excepting tax adjudicated lands, belonging to the State of Louisiana and not presently under mineral lease on May 14, 2003, situated in St. Bernard Parish, Louisiana, and more particularly described as follows: Beginning at a point having Coordinates of X = 2,561,700.00 and Y = 501,215.00; thence East 16,075.00 feet to a point having Coordinates of X = 2,577,775.00 and Y = 501,215.00; thence South approximately 1,701 feet to a point on the Eastern shoreline of Lake Borgne, being the boundary of the Biloxi Wildlife Management Area; thence Southwesterly along the Eastern shoreline of Lake Borgne, being the boundary of the said Biloxi Wildlife Management Area to a point of intersection with a North-South line having a Coordinate of X = 2,561,700.00; thence North approximately 12,416 feet to the point of beginning, **LESS AND EXCEPT** that portion of the Biloxi Wildlife Management Area that may lie within the above described tract, containing approximately **2,452 acres**, all as more particularly outlined on a plat on file in the Office of Mineral Resources, Department of Natural Resources. All bearings, distances and coordinates are based on Louisiana Coordinate System of 1927, (North or South Zone), where applicable.

NOTE: The above description of the Tract nominated for lease has been provided and corrected, where required, exclusively by the nomination party. Any mineral lease selected from this Tract and awarded by the Louisiana State Mineral Board shall be without warranty of any kind, either express, implied, or statutory, including, but not limited to, the implied warranties of merchantability and fitness for a particular purpose. Should the mineral lease awarded by the Louisiana State Mineral Board be subsequently modified, cancelled or abrogated due to the existence of conflicting leases, operating agreements, private claims or other future obligations or conditions which may affect all or any portion of the leased Tract, it shall not relieve the Lessee of the obligation to pay any bonus due thereon to the Louisiana State Mineral Board, nor shall the Louisiana State Mineral Board be obligated to refund any consideration paid by the Lessor prior to such modification, cancellation, or abrogation, including, but not limited to, bonuses, rentals and royalties.

NOTE: A minimum bonus of \$230.00 per acre and a minimum royalty of 23% will be required.

NOTE: The Department of Wildlife and Fisheries has designated certain areas in the coastal waters of the State of Louisiana as Oyster Seed Bed Areas. The exact location of those Seed Bed Areas must be obtained from the Department of Wildlife and Fisheries and any work done under a mineral lease from the State of Louisiana may necessarily be conducted in conformity with the rules and regulations promulgated by the said Department of Wildlife and Fisheries for Oyster Seed Bed Areas.

NOTE: The State of Louisiana does hereby reserve, and this lease shall be subject to, the imprescriptible right of surface use in the nature of a servitude in favor of the Department of Natural Resources, including its Offices and Commissions, for the sole purpose of implementing, constructing, servicing and maintaining approved coastal zone management and/or restoration projects. Utilization of any and all rights derived under this lease by the mineral lessee, its agents, successors or assigns, shall not interfere with nor hinder the reasonable surface use by the Department of Natural Resources, its Offices or Commissions, as herein above reserved.

Applicant: Harold J. Anderson, Inc.

Bidder	Cash Payment	Price / Acre	Rental	Oil	Gas	Other



BLOCK LB0006

P.O.B  
X=2,561,700.00  
Y=501,215.00

TR 35428  
2,452.00 +/- ACRES  
MAY, 2003

LAKE BORGNE

ST BERNARD PARISH

T12S R17E

BILOXI WMA

T12S R16E



**TRACT 35429 - St. Bernard Parish, Louisiana**

All of the lands now or formerly constituting the beds and bottoms of all water bodies of every nature and description, and all islands and other lands formed by accretion, where allowed by law, or by reliction, and excepting tax adjudicated lands, belonging to the State of Louisiana and not presently under mineral lease on May 14, 2003, situated in St. Bernard Parish, Louisiana, and more particularly described as follows: Beginning at the interior corner of the Biloxi Wildlife Management Area having Coordinates of X = 2,577,536.76 and Y = 495,934.88; thence West approximately 5,586 feet to a point on the Eastern shoreline of Lake Borgne, being the boundary of the said Biloxi Wildlife Management Area; thence Northeasterly along said Eastern shoreline of Lake Borgne, being the boundary of the said Biloxi Wildlife Management Area to a point of intersection with a North-South line having a Coordinate of X = 2,577,775.00; thence South approximately 3,566 feet to a point on the boundary of said Biloxi Wildlife Management Area having Coordinates of X = 2,577,775.00 and Y = 495,948.15; thence South 87 degrees 27 minutes 15 seconds West 77.04 feet to a point having Coordinates of X = 2,577,698.03 and Y = 495,944.73; thence South 86 degrees 30 minutes 25 seconds West 161.58 feet to the point of beginning, **LESS AND EXCEPT** that portion of the Biloxi Wildlife Management Area that lies entirely within the above described tract, containing approximately **12 acres**, all as more particularly outlined on a plat on file in the Office of Mineral Resources, Department of Natural Resources. All bearings, distances and coordinates are based on Louisiana Coordinate System of 1927, (North or South Zone), where applicable.

NOTE: The above description of the Tract nominated for lease has been provided and corrected, where required, exclusively by the nomination party. Any mineral lease selected from this Tract and awarded by the Louisiana State Mineral Board shall be without warranty of any kind, either express, implied, or statutory, including, but not limited to, the implied warranties of merchantability and fitness for a particular purpose. Should the mineral lease awarded by the Louisiana State Mineral Board be subsequently modified, cancelled or abrogated due to the existence of conflicting leases, operating agreements, private claims or other future obligations or conditions which may affect all or any portion of the leased Tract, it shall not relieve the Lessee of the obligation to pay any bonus due thereon to the Louisiana State Mineral Board, nor shall the Louisiana State Mineral Board be obligated to refund any consideration paid by the Lessor prior to such modification, cancellation, or abrogation, including, but not limited to, bonuses, rentals and royalties.

NOTE: A minimum bonus of \$230.00 per acre and a minimum royalty of 23% will be required.

NOTE: The Department of Wildlife and Fisheries has designated certain areas in the coastal waters of the State of Louisiana as Oyster Seed Bed Areas. The exact location of those Seed Bed Areas must be obtained from the Department of Wildlife and Fisheries and any work done under a mineral

lease from the State of Louisiana may necessarily be conducted in conformity with the rules and regulations promulgated by the said Department of Wildlife and Fisheries for Oyster Seed Bed Areas.

NOTE: The State of Louisiana does hereby reserve, and this lease shall be subject to, the imprescriptible right of surface use in the nature of a servitude in favor of the Department of Natural Resources, including its Offices and Commissions, for the sole purpose of implementing, constructing, servicing and maintaining approved coastal zone management and/or restoration projects. Utilization of any and all rights derived under this lease by the mineral lessee, its agents, successors or assigns, shall not interfere with nor hinder the reasonable surface use by the Department of Natural Resources, its Offices or Commissions, as herein above reserved.

Applicant: Harold J. Anderson, Inc.

Bidder	Cash Payment	Price / Acre	Rental	Oil	Gas	Other



BLOCK LB0006

LAKE BORGNE

ST BERNARD PARISH

TR 35429  
12.00 +/- ACRES  
MAY, 2003

P.O.B.  
X=2,577,536.76  
Y=495,934.88

BILOXI WMA

T12S R17E



**TRACT 35430 - Portion of Block 11, Main Pass Area, Revised, St. Bernard Parish, Louisiana**

All of the lands now or formerly constituting the beds and bottoms of all water bodies of every nature and description, and all islands and other lands formed by accretion, where allowed by law, or by reliction, and excepting tax adjudicated lands, belonging to the State of Louisiana and not presently under mineral lease on May 14, 2003, situated in St. Bernard Parish, Louisiana, and more particularly described as follows: Beginning at a point on the Southern boundary of State Lease No. 16631 having Coordinates of X = 2,598,475.00 and Y = 363,980.00; thence South 12,150.00 feet to a point on the South line of Block 11, Main Pass Area, Revised having coordinates of X = 2,598,475.00 and Y = 351,830.00; thence West 7,375.00 feet along said South line of said Block 11 to its Southwest corner having Coordinates of X = 2,591,100.00 and Y = 351,830.00; thence North 14,750.00 feet along the West line of said Block 11 to its Northwest corner having Coordinates of X = 2,591,100.00 and Y = 366,580.00; thence East 4,675.00 feet along the North line of said Block 11 to a Northwest corner of said State Lease No. 16631 having Coordinates of X = 2,595,775.00 and Y = 366,580.00; thence along the boundary of said State Lease No. 16631 the following courses and distances: South 2,600.00 feet to a point having Coordinates of X = 2,595,775.00 and Y = 363,980.00; and East 2,700.00 feet to the point of beginning, containing approximately **2,290 acres**, all as more particularly outlined on a plat on file in the Office of Mineral Resources, Department of Natural Resources. All bearings, distances and coordinates are based on Louisiana Coordinate System of 1927, (North or South Zone), where applicable.

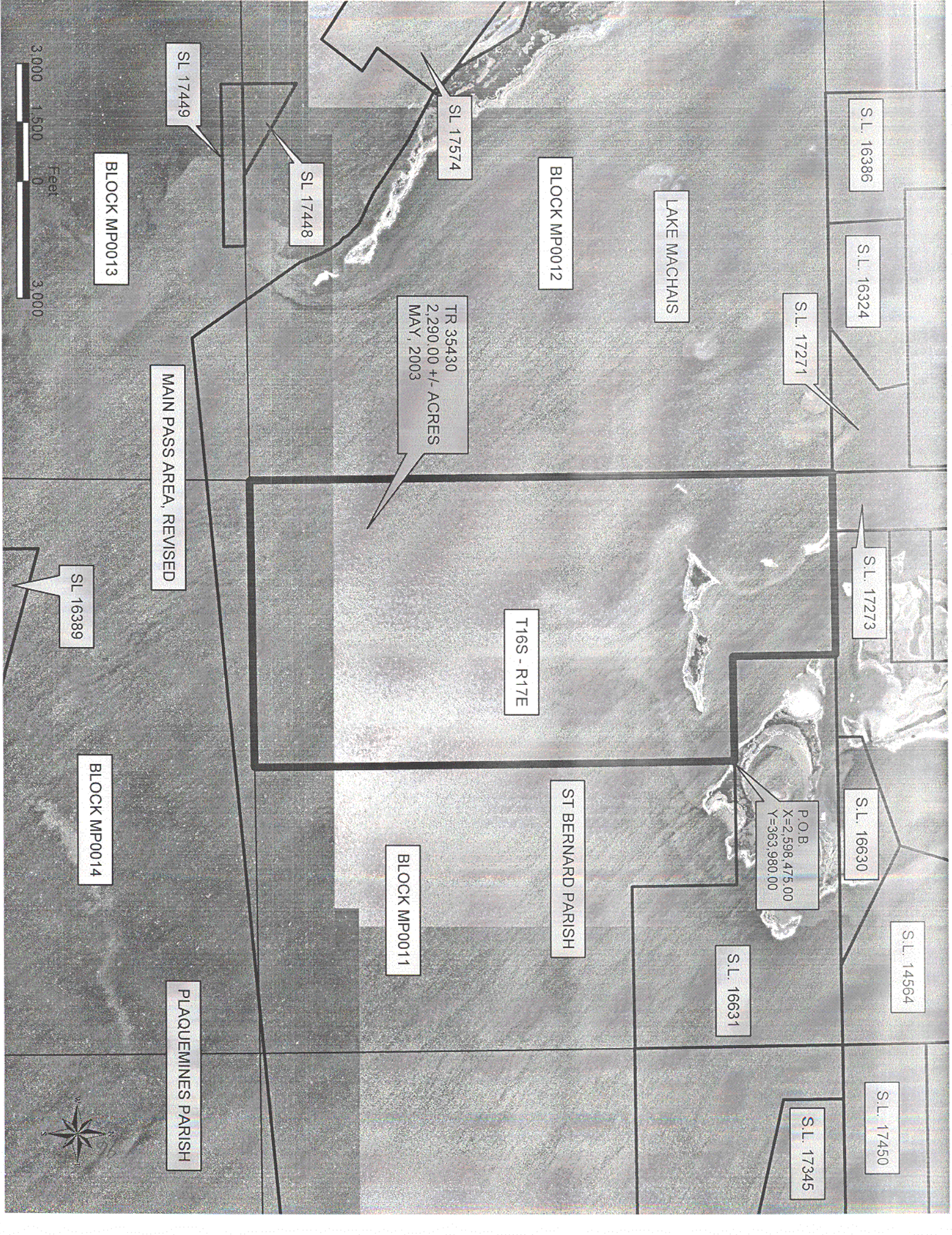
NOTE: The above description of the Tract nominated for lease has been provided and corrected, where required, exclusively by the nomination party. Any mineral lease selected from this Tract and awarded by the Louisiana State Mineral Board shall be without warranty of any kind, either express, implied, or statutory, including, but not limited to, the implied warranties of merchantability and fitness for a particular purpose. Should the mineral lease awarded by the Louisiana State Mineral Board be subsequently modified, cancelled or abrogated due to the existence of conflicting leases, operating agreements, private claims or other future obligations or conditions which may affect all or any portion of the leased Tract, it shall not relieve the Lessee of the obligation to pay any bonus due thereon to the Louisiana State Mineral Board, nor shall the Louisiana State Mineral Board be obligated to refund any consideration paid by the Lessor prior to such modification, cancellation, or abrogation, including, but not limited to, bonuses, rentals and royalties.

NOTE: The Department of Wildlife and Fisheries has designated certain areas in the coastal waters of the State of Louisiana as Oyster Seed Bed Areas. The exact location of those Seed Bed Areas must be obtained from the Department of Wildlife and Fisheries and any work done under a mineral lease from the State of Louisiana may necessarily be conducted in conformity with the rules and regulations promulgated by the said Department of Wildlife and Fisheries for Oyster Seed Bed Areas.

NOTE: The State of Louisiana does hereby reserve, and this lease shall be subject to, the imprescriptible right of surface use in the nature of a servitude in favor of the Department of Natural Resources, including its Offices and Commissions, for the sole purpose of implementing, constructing, servicing and maintaining approved coastal zone management and/or restoration projects. Utilization of any and all rights derived under this lease by the mineral lessee, its agents, successors or assigns, shall not interfere with nor hinder the reasonable surface use by the Department of Natural Resources, its Offices or Commissions, as herein above reserved.

Applicant: Robert A. Schroeder, Inc.

Bidder	Cash Payment	Price / Acre	Rental	Oil	Gas	Other



S.L. 16386

S.L. 16324

S.L. 17271

S.L. 17273

S.L. 16630

S.L. 14564

S.L. 17450

S.L. 17345

S.L. 16631

BLOCK MP0012

S.L. 17574

S.L. 17448

S.L. 17449

BLOCK MP0013

TR 35430  
2,290.00 +/- ACRES  
MAY, 2003

T16S - R17E

ST BERNARD PARISH

BLOCK MP0011

MAIN PASS AREA, REVISED

PLAQUEMINES PARISH

S.L. 16389

BLOCK MP0014

Feet  
0 1,500 3,000



**TRACT 35431 - Portion of Block 11, Main Pass Area, Revised, Plaquemines and St. Bernard Parishes, Louisiana**

All of the lands now or formerly constituting the beds and bottoms of all water bodies of every nature and description, and all islands and other lands formed by accretion, where allowed by law, or by reliction, and excepting tax adjudicated lands, belonging to the State of Louisiana and not presently under mineral lease on May 14, 2003, situated in Plaquemines and St. Bernard Parishes, Louisiana, and more particularly described as follows: Beginning at a point on a Southern boundary of State Lease No. 16631 having Coordinates of X = 2,598,475.00 and Y = 363,980.00; thence along the boundary of said State Lease No. 16631 the following courses and distances: East 3,200.00 feet to a point having Coordinates of X = 2,601,675.00 and Y = 363,980.00; South 2,650.00 feet to a point having Coordinates of X = 2,601,675.00 and Y = 361,330.00; and East 4,175.00 feet to a point on the East line of Block 11, Main Pass Area, Revised, having Coordinates of X = 2,605,850.00 and Y = 361,330.00; thence South 9,500.00 feet to the Southeast corner of said Block 11 having Coordinates of X = 2,605,850.00 and Y = 351,830.00; thence West 7,375.00 feet along the South line of said Block 11 to a point having Coordinates of X = 2,598,475.00 and Y = 351,830.00; thence North 12,150.00 feet to the point of beginning, containing approximately **1,781 acres**, all as more particularly outlined on a plat on file in the Office of Mineral Resources, Department of Natural Resources. All bearings, distances and coordinates are based on Louisiana Coordinate System of 1927, (North or South Zone), where applicable.

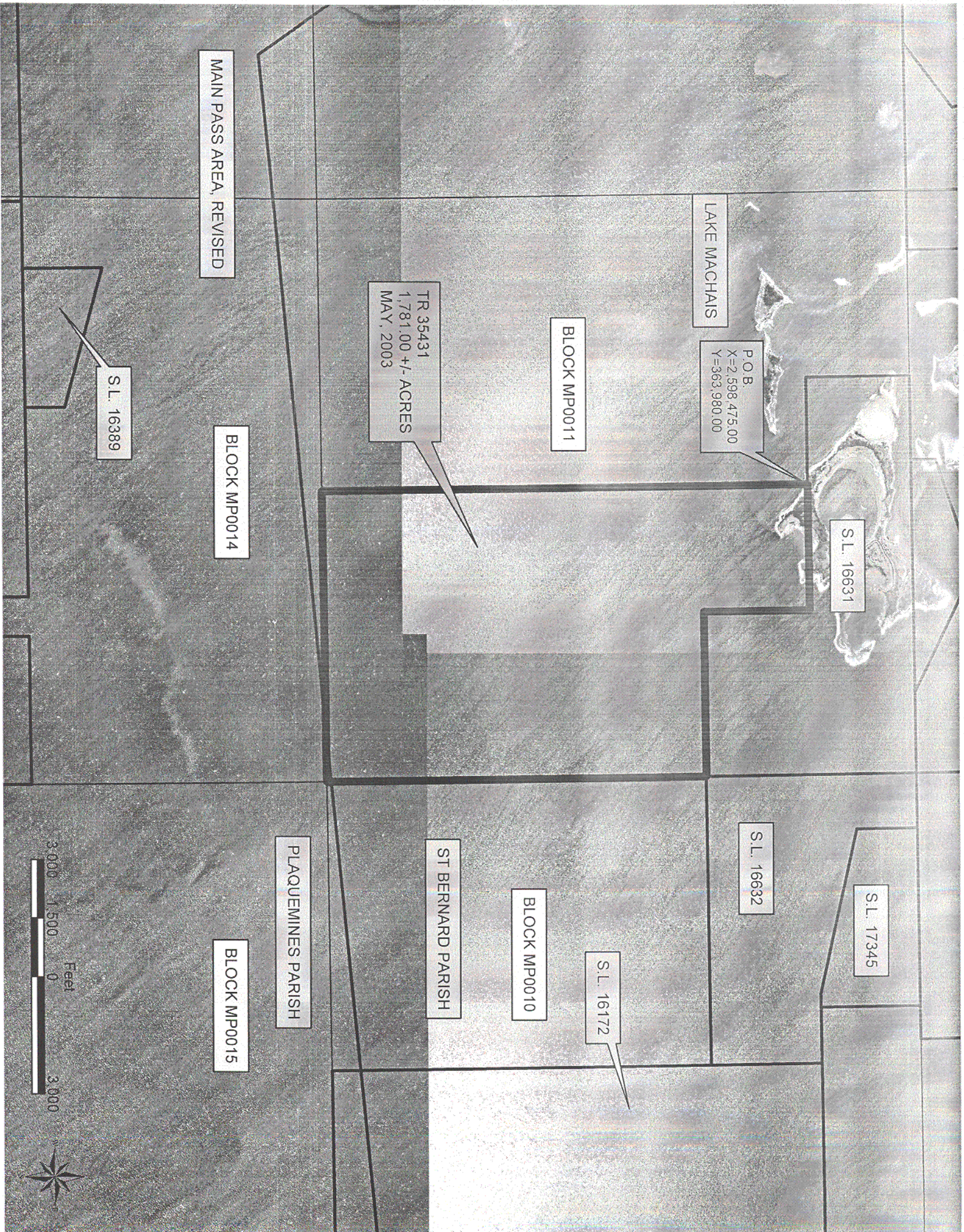
NOTE: The above description of the Tract nominated for lease has been provided and corrected, where required, exclusively by the nomination party. Any mineral lease selected from this Tract and awarded by the Louisiana State Mineral Board shall be without warranty of any kind, either express, implied, or statutory, including, but not limited to, the implied warranties of merchantability and fitness for a particular purpose. Should the mineral lease awarded by the Louisiana State Mineral Board be subsequently modified, cancelled or abrogated due to the existence of conflicting leases, operating agreements, private claims or other future obligations or conditions which may affect all or any portion of the leased Tract, it shall not relieve the Lessee of the obligation to pay any bonus due thereon to the Louisiana State Mineral Board, nor shall the Louisiana State Mineral Board be obligated to refund any consideration paid by the Lessor prior to such modification, cancellation, or abrogation, including, but not limited to, bonuses, rentals and royalties.

NOTE: The Department of Wildlife and Fisheries has designated certain areas in the coastal waters of the State of Louisiana as Oyster Seed Bed Areas. The exact location of those Seed Bed Areas must be obtained from the Department of Wildlife and Fisheries and any work done under a mineral lease from the State of Louisiana may necessarily be conducted in conformity with the rules and regulations promulgated by the said Department of Wildlife and Fisheries for Oyster Seed Bed Areas.

NOTE: The State of Louisiana does hereby reserve, and this lease shall be subject to, the imprescriptible right of surface use in the nature of a servitude in favor of the Department of Natural Resources, including its Offices and Commissions, for the sole purpose of implementing, constructing, servicing and maintaining approved coastal zone management and/or restoration projects. Utilization of any and all rights derived under this lease by the mineral lessee, its agents, successors or assigns, shall not interfere with nor hinder the reasonable surface use by the Department of Natural Resources, its Offices or Commissions, as herein above reserved.

Applicant: Robert A. Schroeder, Inc.

Bidder	Cash Payment	Price / Acre	Rental	Oil	Gas	Other



LAKE MACHAIS

P.O.B.  
X=2,598,475.00  
Y=363,980.00

S.L. 16631

S.L. 16632

S.L. 17345

S.L. 16172

BLOCK MP0011

BLOCK MP0010

ST BERNARD PARISH

PLAQUEMINES PARISH

BLOCK MP0014

BLOCK MP0015

MAIN PASS AREA, REVISED

TR 35431  
1,781.00 +/- ACRES  
MAY, 2003

S.L. 16389



**TRACT 35432 - Portion of Block 18, Chandeleur Sound Area, Addition, Revised, St. Bernard Parish, Louisiana**

All of the lands now or formerly constituting the beds and bottoms of all water bodies of every nature and description, and all islands and other lands formed by accretion, where allowed by law, or by reliction, and excepting tax adjudicated lands, belonging to the State of Louisiana and not presently under mineral lease on May 14, 2003, situated in St. Bernard Parish, Louisiana, and more particularly described as follows: Beginning at a point having Coordinates of X = 2,679,600.00 and Y = 528,830.00, being the Northwest corner of Block 18, Chandeleur Sound Area, Addition, Revised; thence East 7,375.00 feet along the North line of said Block 18 to a point having Coordinates of X = 2,686,975.00 and Y = 528,830.00; thence South 14,750.00 feet to a point intersecting with the South line of said Block 18 having Coordinates of X = 2,686,975.00 and Y = 514,080.00; thence West 2,983.71 feet along the South line of said Block 18 to a point having Coordinates of X = 2,683,991.29 and Y = 514,080.00, being a point on the East line of State Lease No. 17386; thence North 51 degrees 30 minutes 32.5 seconds West 5,610.40 feet along the East boundary of said State Lease No. 17386 to a point having Coordinates of X = 2,679,600.00 and Y = 517,571.86, being a point on the West line of said Block 18; thence North 11,258.10 feet along the West line of said Block 18 to the point of beginning, containing approximately **2,321.27 acres**, all as more particularly outlined on a plat on file in the Office of Mineral Resources, Department of Natural Resources. All bearings, distances and coordinates are based on Louisiana Coordinate System of 1927, (North or South Zone), where applicable.

NOTE: The above description of the Tract nominated for lease has been provided and corrected, where required, exclusively by the nomination party. Any mineral lease selected from this Tract and awarded by the Louisiana State Mineral Board shall be without warranty of any kind, either express, implied, or statutory, including, but not limited to, the implied warranties of merchantability and fitness for a particular purpose. Should the mineral lease awarded by the Louisiana State Mineral Board be subsequently modified, cancelled or abrogated due to the existence of conflicting leases, operating agreements, private claims or other future obligations or conditions which may affect all or any portion of the leased Tract, it shall not relieve the Lessee of the obligation to pay any bonus due thereon to the Louisiana State Mineral Board, nor shall the Louisiana State Mineral Board be obligated to refund any consideration paid by the Lessor prior to such modification, cancellation, or abrogation, including, but not limited to, bonuses, rentals and royalties.

NOTE: A minimum bonus of \$230.00 per acre and a minimum royalty of 23% will be required.

NOTE: The Department of Wildlife and Fisheries has designated certain areas in the coastal waters of the State of Louisiana as Oyster Seed Bed Areas. The exact location of those Seed Bed Areas must be obtained from the Department of Wildlife and Fisheries and any work done under a mineral

lease from the State of Louisiana may necessarily be conducted in conformity with the rules and regulations promulgated by the said Department of Wildlife and Fisheries for Oyster Seed Bed Areas.

NOTE: The State of Louisiana does hereby reserve, and this lease shall be subject to, the imprescriptible right of surface use in the nature of a servitude in favor of the Department of Natural Resources, including its Offices and Commissions, for the sole purpose of implementing, constructing, servicing and maintaining approved coastal zone management and/or restoration projects. Utilization of any and all rights derived under this lease by the mineral lessee, its agents, successors or assigns, shall not interfere with nor hinder the reasonable surface use by the Department of Natural Resources, its Offices or Commissions, as herein above reserved.

Applicant: Chris Roy

Bidder	Cash Payment	Price / Acre	Rental	Oil	Gas	Other



BLOCK CX0008

P.O.B.  
X=2,679,600.00  
Y=528,830.00

BLOCK CX0019

CHANDELEUR SOUND AREA  
ADDITION, REVISED

BLOCK CX0026

BLOCK CX0009

ST BERNARD PARISH

TR 35432  
2,321.27 +/- ACRES  
MAY, 2003

BLOCK CX0018

S.L. 17386

S.L. 17387

BLOCK CX0027

BLOCK CX0010

BLOCK CX0017

BLOCK CX0028



**TRACT 35433 - Portion of Block 18, Chandeleur Sound Area, Addition, Revised, St. Bernard Parish, Louisiana**

All of the lands now or formerly constituting the beds and bottoms of all water bodies of every nature and description, and all islands and other lands formed by accretion, where allowed by law, or by reliction, and excepting tax adjudicated lands, belonging to the State of Louisiana and not presently under mineral lease on May 14, 2003, situated in St. Bernard Parish, Louisiana, and more particularly described as follows: Beginning at a point on the North line of Block 18, Chandeleur Sound Area, Addition, Revised, having Coordinates of X = 2,686,975.00 and Y = 528,830.00; thence East 7,375.00 feet along the North line of said Block 18 to a point having Coordinates of X = 2,694,350.00 and Y = 528,830.00, being also the Northeast corner of said Block 18; thence South 14,750.00 feet along the East line of said Block 18 to a point having Coordinates of X = 2,694,350.00 and Y = 514,080.00, being also the Southeast corner of said Block 18; thence West 7,375.00 feet along the South line of said Block 18 to a point having Coordinates of X = 2,686,975.00 and Y = 514,080.00; thence North 14,750.00 feet to the point of beginning, containing approximately **2,497.27 acres**, all as more particularly outlined on a plat on file in the Office of Mineral Resources, Department of Natural Resources. All bearings, distances and coordinates are based on Louisiana Coordinate System of 1927, (North or South Zone), where applicable.

NOTE: The above description of the Tract nominated for lease has been provided and corrected, where required, exclusively by the nomination party. Any mineral lease selected from this Tract and awarded by the Louisiana State Mineral Board shall be without warranty of any kind, either express, implied, or statutory, including, but not limited to, the implied warranties of merchantability and fitness for a particular purpose. Should the mineral lease awarded by the Louisiana State Mineral Board be subsequently modified, cancelled or abrogated due to the existence of conflicting leases, operating agreements, private claims or other future obligations or conditions which may affect all or any portion of the leased Tract, it shall not relieve the Lessee of the obligation to pay any bonus due thereon to the Louisiana State Mineral Board, nor shall the Louisiana State Mineral Board be obligated to refund any consideration paid by the Lessor prior to such modification, cancellation, or abrogation, including, but not limited to, bonuses, rentals and royalties.

NOTE: A minimum bonus of \$230.00 per acre and a minimum royalty of 23% will be required.

NOTE: The State of Louisiana does hereby reserve, and this lease shall be subject to, the imprescriptible right of surface use in the nature of a servitude in favor of the Department of Natural Resources, including its Offices and Commissions, for the sole purpose of implementing, constructing, servicing and maintaining approved coastal zone management and/or restoration projects. Utilization of any and all rights derived under this lease by the mineral lessee, its agents, successors or assigns, shall not interfere with nor hinder the reasonable surface use by the

Department of Natural Resources, its Offices or Commissions, as herein above reserved.

Applicant: Chris Roy

Bidder	Cash Payment	Price / Acre	Rental	Oil	Gas	Other

P.O.B.  
X=2,686,975.00  
Y=528,830.00

CHANDELEUR SOUND AREA  
ADDITION, REVISED

ST BERNARD PARISH

BLOCK CX0018

TR 35433  
2,497.27 +/- ACRES  
MAY, 2003

BLOCK CX0017

SL 17386

2,000 1,000 0 2,000  
Feet



**TRACT 35434 - Portion of Block 17, Chandeleur Sound Area, Addition, Revised, St. Bernard Parish, Louisiana**

All of the lands now or formerly constituting the beds and bottoms of all water bodies of every nature and description, and all islands and other lands formed by accretion, where allowed by law, or by reliction, and excepting tax adjudicated lands, belonging to the State of Louisiana and not presently under mineral lease on May 14, 2003, situated in St. Bernard Parish, Louisiana, and more particularly described as follows: Beginning at a point having Coordinates of X = 2,694,350.00 and Y = 528,830.00, being also the Northwest corner of Block 17, Chandeleur Sound Area, Addition, Revised; thence East 7,375.00 feet along the North line of said Block 17 to a point having Coordinates of X = 2,701,725.00 and Y = 528,830.00; thence South 14,750.00 feet to a point being the intersection of the South line of said Block 17 and having Coordinates of X = 2,701,725.00 and Y = 514,080.00; thence West 7,375.00 feet along the South line of said Block 17 to a point having Coordinates of X = 2,694,350.00 and Y = 514,080.00, being also the Southwest corner of said Block 17; thence North 14,750.00 feet along the West line of said Block 17 to the point of beginning, containing approximately **2,497.27 acres**, all as more particularly outlined on a plat on file in the Office of Mineral Resources, Department of Natural Resources. All bearings, distances and coordinates are based on Louisiana Coordinate System of 1927, (North or South Zone), where applicable.

NOTE: The above description of the Tract nominated for lease has been provided and corrected, where required, exclusively by the nomination party. Any mineral lease selected from this Tract and awarded by the Louisiana State Mineral Board shall be without warranty of any kind, either express, implied, or statutory, including, but not limited to, the implied warranties of merchantability and fitness for a particular purpose. Should the mineral lease awarded by the Louisiana State Mineral Board be subsequently modified, cancelled or abrogated due to the existence of conflicting leases, operating agreements, private claims or other future obligations or conditions which may affect all or any portion of the leased Tract, it shall not relieve the Lessee of the obligation to pay any bonus due thereon to the Louisiana State Mineral Board, nor shall the Louisiana State Mineral Board be obligated to refund any consideration paid by the Lessor prior to such modification, cancellation, or abrogation, including, but not limited to, bonuses, rentals and royalties.

NOTE: A minimum bonus of \$130.00 per acre and a minimum royalty of 21% will be required.

NOTE: The State of Louisiana does hereby reserve, and this lease shall be subject to, the imprescriptible right of surface use in the nature of a servitude in favor of the Department of Natural Resources, including its Offices and Commissions, for the sole purpose of implementing, constructing, servicing and maintaining approved coastal zone management and/or restoration projects. Utilization of any and all rights derived under this lease by the mineral lessee, its agents, successors or assigns,

shall not interfere with nor hinder the reasonable surface use by the Department of Natural Resources, its Offices or Commissions, as herein above reserved.

Applicant: Chris Roy

Bidder	Cash Payment	Price / Acre	Rental	Oil	Gas	Other

P.O.B.  
X=2,694,350.00  
Y=528,830.00

BLOCK CX0018

CHANDELEUR SOUND AREA  
ADDITION, REVISED

ST BERNARD PARISH

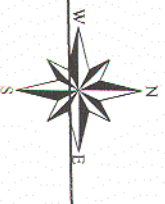
TR 35434  
2,497.27 +/- ACRES  
MAY, 2003

BLOCK CX0017

2,000 1,000 0

Feet

2,000



108

**TRACT 35435 - Portion of Block 17, Chandeleur Sound Area, Addition, Revised, St. Bernard Parish, Louisiana**

All of the lands now or formerly constituting the beds and bottoms of all water bodies of every nature and description, and all islands and other lands formed by accretion, where allowed by law, or by reliction, and excepting tax adjudicated lands, belonging to the State of Louisiana and not presently under mineral lease on May 14, 2003, situated in St. Bernard Parish, Louisiana, and more particularly described as follows: Beginning at a point on the North line of Block 17, Chandeleur Sound Area, Addition, Revised, and having Coordinates of X = 2,701,725.00 and Y = 528,830.00; thence East 7,375.00 feet along the North line of said Block 17 to a point having Coordinates of X = 2,709,100.00 and Y = 528,830.00, being also the Northeast corner of said Block 17; thence South 14,750.00 feet along the East line of said Block 17 to a point having Coordinates of X = 2,709,100.00 and Y = 514,080.00, being also the Southeast corner of said Block 17; thence West 7,375.00 feet along the South line of said Block 17 to a point having Coordinates of X = 2,701,725.00 and Y = 514,080.00; thence North 14,750.00 feet to the point of beginning, containing approximately **2,497.27 acres**, all as more particularly outlined on a plat on file in the Office of Mineral Resources, Department of Natural Resources. All bearings, distances and coordinates are based on Louisiana Coordinate System of 1927, (North or South Zone), where applicable.

NOTE: The above description of the Tract nominated for lease has been provided and corrected, where required, exclusively by the nomination party. Any mineral lease selected from this Tract and awarded by the Louisiana State Mineral Board shall be without warranty of any kind, either express, implied, or statutory, including, but not limited to, the implied warranties of merchantability and fitness for a particular purpose. Should the mineral lease awarded by the Louisiana State Mineral Board be subsequently modified, cancelled or abrogated due to the existence of conflicting leases, operating agreements, private claims or other future obligations or conditions which may affect all or any portion of the leased Tract, it shall not relieve the Lessee of the obligation to pay any bonus due thereon to the Louisiana State Mineral Board, nor shall the Louisiana State Mineral Board be obligated to refund any consideration paid by the Lessor prior to such modification, cancellation, or abrogation, including, but not limited to, bonuses, rentals and royalties.

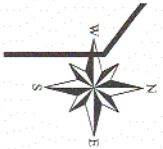
NOTE: A minimum bonus of \$130.00 per acre and a minimum royalty of 21% will be required.

NOTE: The State of Louisiana does hereby reserve, and this lease shall be subject to, the imprescriptible right of surface use in the nature of a servitude in favor of the Department of Natural Resources, including its Offices and Commissions, for the sole purpose of implementing, constructing, servicing and maintaining approved coastal zone management and/or restoration projects. Utilization of any and all rights derived under this lease by the mineral lessee, its agents, successors or assigns, shall not interfere with nor hinder the reasonable surface use by the

Department of Natural Resources, its Offices or Commissions, as herein above reserved.

Applicant: Chris Roy

Bidder	Cash Payment	Price / Acre	Rental	Oil	Gas	Other



BLOCK CX0009

BLOCK CX0010

BLOCK CX0011

BLOCK CX0016

BLOCK CX0018

BLOCK CX0017

ST BERNARD PARISH

CHANDELEUR SOUND AREA  
ADDITION, REVISED

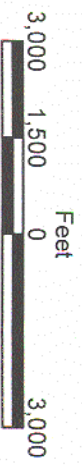
BLOCK CX0027

BLOCK CX0028

BLOCK CX0029

P.O.B.  
X=2,701,725.00  
Y=528,830.00

TR 35435  
2,497.27 +/- ACRES  
MAY, 2003



**TRACT 35436 - Portion of Block 16, Chandeleur Sound Area, Addition, Revised, St. Bernard Parish, Louisiana**

All of the lands now or formerly constituting the beds and bottoms of all water bodies of every nature and description, and all islands and other lands formed by accretion, where allowed by law, or by reliction, and excepting tax adjudicated lands, belonging to the State of Louisiana and not presently under mineral lease on May 14, 2003, situated in St. Bernard Parish, Louisiana, and more particularly described as follows: Beginning at a point having Coordinates of X = 2,709,100.00 and Y = 528,830.00, being the Northwest corner of Block 16, Chandeleur Sound Area, Addition, Revised; thence East 14,750.00 feet along the North line of said Block 16 to a point having Coordinates of X = 2,723,850.00 and Y = 528,830.00, being the Northeast corner of said Block 16; thence South 7,375.00 feet along the East line of said Block 16 to a point having Coordinates of X = 2,723,850.00 and Y = 521,455.00; thence West 14,750.00 feet to a point intersecting with the West line of said Block 16 having Coordinates of X = 2,709,100.00 and Y = 521,455.00; thence North 7,375.00 feet along the West line of said Block 16 to the point of beginning, containing approximately **2,497.27 acres**, all as more particularly outlined on a plat on file in the Office of Mineral Resources, Department of Natural Resources. All bearings, distances and coordinates are based on Louisiana Coordinate System of 1927, (North or South Zone), where applicable.

NOTE: The above description of the Tract nominated for lease has been provided and corrected, where required, exclusively by the nomination party. Any mineral lease selected from this Tract and awarded by the Louisiana State Mineral Board shall be without warranty of any kind, either express, implied, or statutory, including, but not limited to, the implied warranties of merchantability and fitness for a particular purpose. Should the mineral lease awarded by the Louisiana State Mineral Board be subsequently modified, cancelled or abrogated due to the existence of conflicting leases, operating agreements, private claims or other future obligations or conditions which may affect all or any portion of the leased Tract, it shall not relieve the Lessee of the obligation to pay any bonus due thereon to the Louisiana State Mineral Board, nor shall the Louisiana State Mineral Board be obligated to refund any consideration paid by the Lessor prior to such modification, cancellation, or abrogation, including, but not limited to, bonuses, rentals and royalties.

NOTE: A minimum bonus of \$130.00 per acre and a minimum royalty of 21% will be required.

NOTE: The State of Louisiana does hereby reserve, and this lease shall be subject to, the imprescriptible right of surface use in the nature of a servitude in favor of the Department of Natural Resources, including its Offices and Commissions, for the sole purpose of implementing, constructing, servicing and maintaining approved coastal zone management and/or restoration projects. Utilization of any and all rights derived under this lease by the mineral lessee, its agents, successors or assigns, shall not interfere with nor hinder the reasonable surface use by the

Department of Natural Resources, its Offices or Commissions, as herein above reserved.

Applicant: Chris Roy

Bidder	Cash Payment	Price / Acre	Rental	Oil	Gas	Other



BLOCK CX0010

ST BERNARD PARISH

BLOCK CX0011

BLOCK CX0012

P.O.B.  
X=2,709,100.00  
Y=528,830.00

BLOCK CX0017

BLOCK CX0016

BLOCK CX0015

TR 35436  
2,497.27 +/- ACRES  
MAY, 2003

CHANDELEUR SOUND AREA  
ADDITION, REVISED



111

**TRACT 35437 - Portion of Block 16, Chandeleur Sound Area, Addition, Revised, St. Bernard Parish, Louisiana**

All of the lands now or formerly constituting the beds and bottoms of all water bodies of every nature and description, and all islands and other lands formed by accretion, where allowed by law, or by reliction, and excepting tax adjudicated lands, belonging to the State of Louisiana and not presently under mineral lease on May 14, 2003, situated in St. Bernard Parish, Louisiana, and more particularly described as follows: Beginning at a point on the West line of Block 16, Chandeleur Sound Area, Addition, Revised, having Coordinates of X = 2,709,100.00 and Y = 521,455.00; thence East 14,750.00 feet to a point intersecting the East line of said Block 16 having Coordinates of X = 2,723,850.00 and Y = 521,455.00; thence South 7,375.00 feet along the East line of said Block 16 to a point having Coordinates of X = 2,723,850.00 and Y = 514,080.00, being the Southeast corner of said Block 16; thence West 14,750.00 feet along the South line of said Block 16 to a point having Coordinates of X = 2,709,100.00 and Y = 514,080.00, being the Southwest corner of said Block 16; thence North 7,375.00 feet along the West line of said Block 16 to the point of beginning, containing approximately **2,497.27 acres**, all as more particularly outlined on a plat on file in the Office of Mineral Resources, Department of Natural Resources. All bearings, distances and coordinates are based on Louisiana Coordinate System of 1927, (North or South Zone), where applicable.

NOTE: The above description of the Tract nominated for lease has been provided and corrected, where required, exclusively by the nomination party. Any mineral lease selected from this Tract and awarded by the Louisiana State Mineral Board shall be without warranty of any kind, either express, implied, or statutory, including, but not limited to, the implied warranties of merchantability and fitness for a particular purpose. Should the mineral lease awarded by the Louisiana State Mineral Board be subsequently modified, cancelled or abrogated due to the existence of conflicting leases, operating agreements, private claims or other future obligations or conditions which may affect all or any portion of the leased Tract, it shall not relieve the Lessee of the obligation to pay any bonus due thereon to the Louisiana State Mineral Board, nor shall the Louisiana State Mineral Board be obligated to refund any consideration paid by the Lessor prior to such modification, cancellation, or abrogation, including, but not limited to, bonuses, rentals and royalties.

NOTE: A minimum bonus of \$130.00 per acre and a minimum royalty of 21% will be required.

NOTE: The State of Louisiana does hereby reserve, and this lease shall be subject to, the imprescriptible right of surface use in the nature of a servitude in favor of the Department of Natural Resources, including its Offices and Commissions, for the sole purpose of implementing, constructing, servicing and maintaining approved coastal zone management and/or restoration projects. Utilization of any and all rights derived under this lease by the mineral lessee, its agents, successors or assigns,

shall not interfere with nor hinder the reasonable surface use by the Department of Natural Resources, its Offices or Commissions, as herein above reserved.

Applicant: Chris Roy

Bidder	Cash Payment	Price / Acre	Rental	Oil	Gas	Other



CHANDELEUR SOUND AREA  
ADDITION, REVISED

BLOCK CX0017

P.O.B.  
X=2,709,100.00  
Y=521,455.00

BLOCK CX0016

BLOCK CX0015

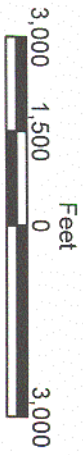
ST BERNARD PARISH

BLOCK CX0028

BLOCK CX0029

BLOCK CX0030

TR 35437  
2,497.27 +/- ACRES  
MAY, 2003



**TRACT 35438 - Portion of Block 27, Chandeleur Sound Area, Addition, Revised, St. Bernard Parish, Louisiana**

All of the lands now or formerly constituting the beds and bottoms of all water bodies of every nature and description, and all islands and other lands formed by accretion, where allowed by law, or by reliction, and excepting tax adjudicated lands, belonging to the State of Louisiana and not presently under mineral lease on May 14, 2003, situated in St. Bernard Parish, Louisiana, and more particularly described as follows: Beginning at a point on the North line of Block 27, Chandeleur Sound Area, Addition, Revised, having Coordinates of X = 2,683,991.29 and Y = 514,080.00; thence East 10,358.70 feet along the North line of Block 27 to a point having Coordinates of X = 2,694,350.00 and Y = 514,080.00, being the Northeast corner of said Block 27; thence South 7,375.00 feet along the East line of said Block 27 to a point having Coordinates of X = 2,694,350.00 and Y = 506,705.00; thence West 14,750.00 feet to a point on the West line of said Block 27 having Coordinates of X = 2,679,600.00 and Y = 506,705.00; thence North 5,048.70 feet along the West line of said Block 27 to a point having Coordinates of X = 2,679,600.00 and Y = 511,753.66 and being a point on the Southwest line of State Lease No. 17387; thence South 45 degrees 04 minutes 41.9 seconds East 4,304.20 feet along the Southwest boundary of said State Lease No. 17387 to a point having Coordinates of X = 2,682,647.68 and Y = 508,714.30; thence East 5,907.30 feet along the South boundary of said State Lease No. 17387 to a point having Coordinates of X = 2,688,554.94 and Y = 508,714.30; thence North 1,736.80 feet along the East boundary of said State Lease No. 17387 to a point having Coordinates of X = 2,688,554.94 and Y = 510,451.08; thence North 51 degrees 30 minutes 32.4 seconds West 5,830.60 feet along the Northeast boundary of said State Lease No. 17387 to the point of beginning being the Northwest corner of said State Lease No. 17387 and the Southeast corner of State Lease No. 17386, containing approximately **1,685 acres**, all as more particularly outlined on a plat on file in the Office of Mineral Resources, Department of Natural Resources. All bearings, distances and coordinates are based on Louisiana Coordinate System of 1927, (North or South Zone), where applicable.

NOTE: The above description of the Tract nominated for lease has been provided and corrected, where required, exclusively by the nomination party. Any mineral lease selected from this Tract and awarded by the Louisiana State Mineral Board shall be without warranty of any kind, either express, implied, or statutory, including, but not limited to, the implied warranties of merchantability and fitness for a particular purpose. Should the mineral lease awarded by the Louisiana State Mineral Board be subsequently modified, cancelled or abrogated due to the existence of conflicting leases, operating agreements, private claims or other future obligations or conditions which may affect all or any portion of the leased Tract, it shall not relieve the Lessee of the obligation to pay any bonus due thereon to the Louisiana State Mineral Board, nor shall the Louisiana State Mineral Board be obligated to refund any consideration paid by the Lessor prior to such modification, cancellation, or abrogation, including, but not limited to, bonuses, rentals and royalties.

NOTE: A minimum bonus of \$230.00 per acre and a minimum royalty of 23% will be required.

NOTE: The Department of Wildlife and Fisheries has designated certain areas in the coastal waters of the State of Louisiana as Oyster Seed Bed Areas. The exact location of those Seed Bed Areas must be obtained from the Department of Wildlife and Fisheries and any work done under a mineral lease from the State of Louisiana may necessarily be conducted in conformity with the rules and regulations promulgated by the said Department of Wildlife and Fisheries for Oyster Seed Bed Areas.

NOTE: The State of Louisiana does hereby reserve, and this lease shall be subject to, the imprescriptible right of surface use in the nature of a servitude in favor of the Department of Natural Resources, including its Offices and Commissions, for the sole purpose of implementing, constructing, servicing and maintaining approved coastal zone management and/or restoration projects. Utilization of any and all rights derived under this lease by the mineral lessee, its agents, successors or assigns, shall not interfere with nor hinder the reasonable surface use by the Department of Natural Resources, its Offices or Commissions, as herein above reserved.

Applicant: Chris Roy

Bidder	Cash Payment	Price / Acre	Rental	Oil	Gas	Other

BLOCK CX0019

BLOCK CX0018

BLOCK CX0017

ST BERNARD PARISH

S.L. 17386

P.O.B.  
X=2,683,991.29  
Y=514,080.00

T11S - R20E

S.L. 17387

TR 35438  
1,685.00 +/- ACRES  
MAY, 2003

CHANDELEUR SOUND AREA  
ADDITION, REVISED

BLOCK CX0026

BLOCK CX0027

BLOCK CX0028

