

TRACT 35415 - Concordia Parish, Louisiana

All of the lands now or formerly constituting the beds and bottoms of all water bodies of every nature and description, and all islands and other lands formed by accretion, where allowed by law, or by reliction, and excepting tax adjudicated lands, belonging to the State of Louisiana and not presently under mineral lease on May 14, 2003, situated in Concordia Parish, Louisiana, and more particularly described as follows: Beginning at a point on the boundary of the Red River Wildlife Management Area having Coordinates of X = 2,263,547.99 and Y = 199,756.79; thence along the boundary of said Red River Wildlife Management Area South 01 degrees 57 minutes 19 seconds East 6,518.24 feet to a point having Coordinates of X = 2,263,770.39 and Y = 193,242.35; thence in a Southwesterly direction, then in a Westerly direction, and then in a Northwesterly direction along the boundary of said Red River Wildlife Management Area, to a point having Coordinates of X = 2,258,032.26 and Y = 193,809.54; thence along the said boundary of Red River Wildlife Management Area the following courses: South 00 degrees 11 minutes 55 seconds East 981.31 feet to a point having Coordinates of X = 2,258,035.66 and Y = 192,828.24, South 58 degrees 47 minutes 58 seconds West 204.91 feet to a point having Coordinates of X = 2,257,860.39 and Y = 192,722.09, South 58 degrees 34 minutes 30 seconds West 374.89 feet to a point having Coordinates of X = 2,257,540.49 and Y = 192,526.63, South 58 degrees 56 minutes 14 seconds West 284.06 feet to a point having Coordinates of X = 2,257,297.16 and Y = 192,380.06, South 58 degrees 28 minutes 32 seconds West 352.54 feet to a point having Coordinates of X = 2,256,996.65 and Y = 192,195.73, North 00 degrees 00 minutes 11 seconds East 189.79 feet to a point having Coordinates of X = 2,256,996.66 and Y = 192,385.52, North 00 degrees 06 minutes 58 seconds West 1,456.97 feet to a point having Coordinates of X = 2,256,993.71 and Y = 193,842.49, North 00 degrees 17 minutes 34 seconds West 763.39 feet to a point having Coordinates of X = 2,256,989.81 and Y = 194,605.87, North 00 degrees 10 minutes 35 seconds West 5,200.29 feet to a point having Coordinates of X = 2,256,973.79 and Y = 199,806.14, South 89 degrees 11 minutes 19 seconds East 1,021.02 feet to a point having Coordinates of X = 2,257,994.71 and Y = 199,791.68, South 89 degrees 30 minutes 05 seconds East 1,025.92 feet to a point having Coordinates of X = 2,259,020.59 and Y = 199,782.75, North 89 degrees 00 minutes 30 seconds East 600.93 feet to a point having Coordinates of X = 2,259,621.43 and Y = 199,793.15, South 85 degrees 41 minutes 30 seconds East 268.23 feet to a point having Coordinates of X = 2,259,888.90 and Y = 199,773.00, South 89 degrees 16 minutes 36 seconds East 265.34 feet to a point having Coordinates of X = 2,260,154.22 and Y = 199,769.65, South 89 degrees 16 minutes 39 seconds East 559.89 feet to a point having Coordinates of X = 2,260,714.07 and Y = 199,762.59, North 89 degrees 10 minutes 29 seconds East 811.01 feet to a point having Coordinates of X = 2,261,525.00 and Y = 199,774.27, North 89 degrees 52 minutes 09 seconds East 1,006.72 feet to a point having Coordinates of X = 2,262,531.72 and Y = 199,776.57, South 88 degrees 53 minutes 06 seconds East 1,016.46 feet to the point of beginning, containing approximately **4 acres**, all as more particularly outlined on a plat on file in the Office of Mineral Resources, Department of Natural

Resources. All bearings, distances and coordinates are based on Louisiana Coordinate System of 1927, (North or South Zone), where applicable.

NOTE: The above description of the Tract nominated for lease has been provided and corrected, where required, exclusively by the nomination party. Any mineral lease selected from this Tract and awarded by the Louisiana State Mineral Board shall be without warranty of any kind, either express, implied, or statutory, including, but not limited to, the implied warranties of merchantability and fitness for a particular purpose. Should the mineral lease awarded by the Louisiana State Mineral Board be subsequently modified, cancelled or abrogated due to the existence of conflicting leases, operating agreements, private claims or other future obligations or conditions which may affect all or any portion of the leased Tract, it shall not relieve the Lessee of the obligation to pay any bonus due thereon to the Louisiana State Mineral Board, nor shall the Louisiana State Mineral Board be obligated to refund any consideration paid by the Lessor prior to such modification, cancellation, or abrogation, including, but not limited to, bonuses, rentals and royalties.

NOTE: The mineral lease is located in the Red River Wildlife Management Area under the jurisdiction of the Louisiana Department of Wildlife and Fisheries which has promulgated rules and regulations for the protection of game and wildlife on the aforesaid Tract and, therefore, shall be subject to said rules and regulations, a copy of which shall be attached to the mineral lease. In addition to the specific rules and regulations applicable, the following shall apply regarding operations under this mineral lease:

1. No activities will be allowed without written authorization from the Louisiana Department of Wildlife and Fisheries.
2. Projects will be evaluated on a case by case basis. Modifications to projects may be required including, but not limited to, access routes, spoil placement, well sites, flow lines and other appurtenant structures.
3. Mitigation will be required to offset avoidable wetland impacts.
4. Removal of all structures, facilities and equipment will be required within 120 days of abandonment unless otherwise agreed to by the Louisiana Department of Wildlife and Fisheries.
5. Prior to submitting applications for wetland permits to Federal and State permitting agencies the lease holder shall coordinate project details with the Louisiana Department of Wildlife and Fisheries, Fur and Refuge Division. Contact person for the Department will be Mike Windham at (504) 568-5886.

Applicant: Stephen M. Jenkins, Inc.

Bidder	Cash Payment	Price / Acre	Rental	Oil	Gas	Other



P.O.B.
X=2,263,547.99
Y=199,756.79

TR 35415
4.00 +/- ACRES
MAY, 2003

T3N R8E



CONCORDIA PARISH

SL 13398

SL 12894

RED RIVER

AVOUELLES PARISH



TRACT 35416 - Concordia Parish, Louisiana

All of the lands now or formerly constituting the beds and bottoms of all water bodies of every nature and description, and all islands and other lands formed by accretion, where allowed by law, or by reliction, and excepting tax adjudicated lands, belonging to the State of Louisiana and not presently under mineral lease on May 14, 2003, situated in Concordia Parish, Louisiana, and more particularly described as follows: Beginning at a point on the boundary of Red River Wildlife Management Area having Coordinates of X = 2,264,295.64 and Y = 189,838.88; thence along the said boundary of Red River Wildlife Management Areas the following courses: North 08 degrees 46 minutes 23 seconds West 3,443.76 feet to a point having Coordinates of X = 2,263,770.39 and Y = 193,242.35, North 24 degrees 04 minutes 09 seconds East 2,207.94 feet to a point having Coordinates of X = 2,264,670.88 and Y = 195,258.32, North 89 degrees 56 minutes 46 seconds East 6,844.16 feet to a point having Coordinates of X = 2,271,515.04 and Y = 195,264.75; thence South 7,450.36 feet to a point on the boundary of said Red River Wildlife Management Area having Coordinates of X = 2,271,515.04 and Y = 187,814.39; thence along the said boundary of Red River Wildlife Management Areas the following courses: South 89 degrees 35 minutes 26 seconds West 6,857.40 feet to a point having Coordinates of X = 2,264,657.82 and Y = 187,765.39, North 11 degrees 37 minutes 35 seconds West 837.21 feet to a point having Coordinates of X = 2,264,489.10 and Y = 188,585.42, North 08 degrees 46 minutes 27 seconds West 1,231.87 feet to a point having Coordinates of X = 2,264,301.19 and Y = 189,802.87, North 08 degrees 45 minutes 42 seconds West 36.44 feet to the point of beginning, containing approximately **8 acres**, all as more particularly outlined on a plat on file in the Office of Mineral Resources, Department of Natural Resources. All bearings, distances and coordinates are based on Louisiana Coordinate System of 1927, (North or South Zone), where applicable.

NOTE: The above description of the Tract nominated for lease has been provided and corrected, where required, exclusively by the nomination party. Any mineral lease selected from this Tract and awarded by the Louisiana State Mineral Board shall be without warranty of any kind, either express, implied, or statutory, including, but not limited to, the implied warranties of merchantability and fitness for a particular purpose. Should the mineral lease awarded by the Louisiana State Mineral Board be subsequently modified, cancelled or abrogated due to the existence of conflicting leases, operating agreements, private claims or other future obligations or conditions which may affect all or any portion of the leased Tract, it shall not relieve the Lessee of the obligation to pay any bonus due thereon to the Louisiana State Mineral Board, nor shall the Louisiana State Mineral Board be obligated to refund any consideration paid by the Lessor prior to such modification, cancellation, or abrogation, including, but not limited to, bonuses, rentals and royalties.

NOTE: The mineral lease is located in the Red River Wildlife Management Area and the Three River Wildlife Management Area under the jurisdiction of the Louisiana Department of Wildlife and Fisheries which has

promulgated rules and regulations for the protection of game and wildlife on the aforesaid Tract and, therefore, shall be subject to said rules and regulations, a copy of which shall be attached to the mineral lease. In addition to the specific rules and regulations applicable, the following shall apply regarding operations under this mineral lease:

1. No activities will be allowed without written authorization from the Louisiana Department of Wildlife and Fisheries.
2. Projects will be evaluated on a case by case basis. Modifications to projects may be required including, but not limited to, access routes, spoil placement, well sites, flow lines and other appurtenant structures.
3. Mitigation will be required to offset avoidable wetland impacts.
4. Removal of all structures, facilities and equipment will be required within 120 days of abandonment unless otherwise agreed to by the Louisiana Department of Wildlife and Fisheries.
5. Prior to submitting applications for wetland permits to Federal and State permitting agencies the lease holder shall coordinate project details with the Louisiana Department of Wildlife and Fisheries, Fur and Refuge Division. Contact person for the Department will be Mike Windham at (504) 568-5886.

Applicant: Stephen M. Jenkins, Inc.

Bidder	Cash Payment	Price / Acre	Rental	Oil	Gas	Other



RED RIVER WMA

T3N R5W

T2N - R8E

T3N R8E

TR 35416
8.00 +/- ACRES
MAY, 2003

P.O.B
X=2,264,295.64
Y=189,838.88

CONCORDIA PARISH



TRACT 35417 - Concordia Parish, Louisiana

A certain tract of land, excluding the beds and bottoms of all navigable waters, belonging to and not under mineral lease from the Louisiana Department of Wildlife and Fisheries, on May 14, 2003, being more fully described as follows: All of right, title and interest of the Louisiana Department of Wildlife and Fisheries, being an undivided 50 percent interest, in the mineral rights, in and to that part of the Red River Wildlife Management Area located in Sections 9, 10, 11, 12, 13, 14, 15, 35 and 36, Township 3 North, Range 8 East, Concordia Parish, Louisiana, containing approximately **2,302 gross acres and 1,151 net acres**, all as more particularly outlined on a plat on file in the Office of Mineral Resources, Department of Natural Resources. All bearings, distances and coordinates are based on Louisiana Coordinate System of 1927, (North or South Zone), where applicable.

NOTE: The above description of the Tract nominated for lease has been provided and corrected, where required, exclusively by the nomination party. Any mineral lease selected from this Tract and awarded by the Louisiana State Mineral Board shall be without warranty of any kind, either express, implied, or statutory, including, but not limited to, the implied warranties of merchantability and fitness for a particular purpose. Should the mineral lease awarded by the Louisiana State Mineral Board be subsequently modified, cancelled or abrogated due to the existence of conflicting leases, operating agreements, private claims or other future obligations or conditions which may affect all or any portion of the leased Tract, it shall not relieve the Lessee of the obligation to pay any bonus due thereon to the Louisiana State Mineral Board, nor shall the Louisiana State Mineral Board be obligated to refund any consideration paid by the Lessor prior to such modification, cancellation, or abrogation, including, but not limited to, bonuses, rentals and royalties.

NOTE: The mineral lease is located in the Red River Wildlife Management Area under the jurisdiction of the Louisiana Department of Wildlife and Fisheries which has promulgated rules and regulations for the protection of game and wildlife on the aforesaid Tract and, therefore, shall be subject to said rules and regulations, a copy of which shall be attached to the mineral lease. In addition to the specific rules and regulations applicable, the following shall apply regarding operations under this mineral lease:

1. No activities will be allowed without written authorization of the Louisiana Department of Wildlife and Fisheries. All projects will be coordinated and approved by the Red River Wildlife Management Area Supervisor prior to any activities on the wildlife management area.
2. Proposed projects will be evaluated on a case by case basis. Modifications to proposed project features including but not limited to access routes, well sites, flowlines and appurtenant structures may be required by the Louisiana Department of Wildlife and Fisheries.
3. Compliance with the Red River Wildlife Management Area regulations and Wildlife Division mineral regulations will be required unless otherwise specified by the Department.

4. Compensatory mitigation will be required to offset unavoidable habitat impacts.
5. Removal of all structures, facilities and equipment will be required within 120 days of abandonment unless otherwise agreed to by the Department.
6. No activities will be allowed during the hunting season unless approved by the Department.
7. Prior to submitting applications for wetland permits to Federal and State permitting agencies, the lease holder shall coordinate project details with the Department.

NOTE: The Department will require a minimum bonus of \$150.00 per acre and a minimum royalty of 25%.

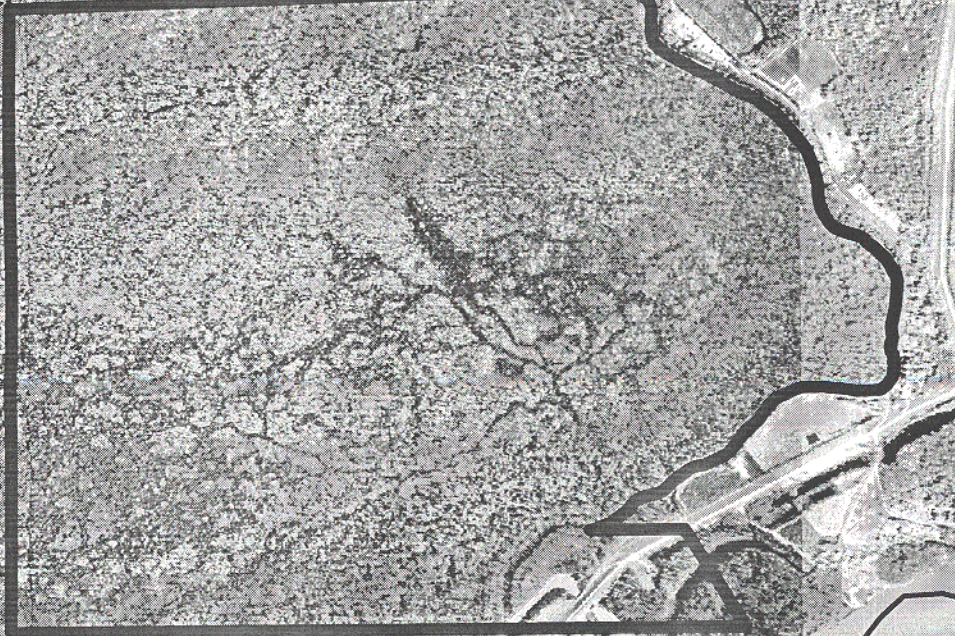
Applicant: Stephen M. Jenkins, Inc.

Bidder	Cash Payment	Price / Acre	Rental	Oil	Gas	Other

RED RIVER WMA

TR 35417
2,302.00 +/- GROSS ACRES
1,151.00 +/- NET ACRES
MAY, 2003

T3N R8E

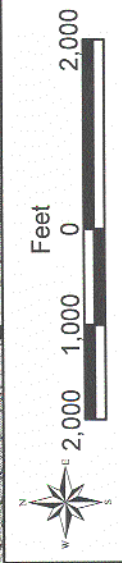


CONCORDIA PARISH

RED RIVER

SL 13398

SL 12894



TRACT 35418 - Concordia Parish, Louisiana

All of the lands now or formerly constituting the beds and bottoms of all water bodies of every nature and description, and all islands and other lands formed by accretion, where allowed by law, or by reliction, and excepting tax adjudicated lands, belonging to the State of Louisiana and not presently under mineral lease on May 14, 2003, situated in Concordia Parish, Louisiana, and more particularly described as follows: Beginning at a point on the boundary of Three Rivers Wildlife Management Area having Coordinates of X = 2,264,295.64 and Y = 189,838.88; thence along the said boundary of Three Rivers Wildlife Management Areas the following courses: South 08 degrees 45 minutes 42 seconds East 36.44 feet to a point having Coordinates of X = 2,264,301.19 and Y = 189,802.87, South 08 degrees 46 minutes 27 seconds East 1,231.87 feet to a point having Coordinates of X = 2,264,489.10 and Y = 188,585.42, South 87 degrees 02 minutes 36 seconds West 506.20 feet to a point having Coordinates of X = 2,263,983.57 and Y = 188,559.31, South 00 degrees 04 minutes 57 seconds West 1,015.60 feet to a point having Coordinates of X = 2,263,982.11 and Y = 187,543.71, South 00 degrees 26 minutes 48 seconds East 732.56 feet to a point having Coordinates of X = 2,263,987.82 and Y = 186,811.17, South 00 degrees 05 minutes 43 seconds East 198.59 feet to a point having Coordinates of X = 2,263,988.15 and Y = 186,612.58, South 00 degrees 05 minutes 41 seconds East 617.28 feet to a point having Coordinates of X = 2,263,989.17 and Y = 185,995.30, North 89 degrees 49 minutes 46 seconds East 652.00 feet to a point having Coordinates of X = 2,264,641.17 and Y = 185,997.24, North 89 degrees 49 minutes 46 seconds East 483.99 feet to a point having Coordinates of X = 2,265,125.16 and Y = 185,998.68, South 89 degrees 09 minutes 52 seconds East 444.42 feet to a point having Coordinates of X = 2,265,569.53 and Y = 185,992.20, South 11 degrees 59 minutes 14 seconds East 651.58 feet to a point having Coordinates of X = 2,265,704.86 and Y = 185,354.83, South 16 degrees 27 minutes 03 seconds East 560.68 feet to a point having Coordinates of X = 2,265,863.64 and Y = 184,817.10, South 10 degrees 16 minutes 13 seconds East 345.33 feet to a point having Coordinates of X = 2,265,925.21 and Y = 184,477.30, South 88 degrees 36 minutes 16 seconds West 10,396.49 feet to a point having Coordinates of X = 2,255,531.80 and Y = 184,224.10, thence in a Northerly direction and then in a Northeasterly direction along the boundary of said Three Rivers Wildlife Management Area, to a point having Coordinates of X = 2,256,399.70 and Y = 188,573.46; thence along the said boundary of Three Rivers Wildlife Management Area the following courses: North 89 degrees 33 minutes 41 seconds East 1,189.68 feet to a point having Coordinates of X = 2,257,589.35 and Y = 188,582.57, North 30 degrees 57 minutes 12 seconds East 1,178.04 feet to a point having Coordinates of X = 2,258,195.26 and Y = 189,592.84, North 02 degrees 05 minutes 04 seconds East 1,116.26 feet to a point having Coordinates of X = 2,258,235.86 and Y = 190,708.36, South 89 degrees 35 minutes 55 seconds East 912.06 feet to a point having Coordinates of X = 2,259,147.90 and Y = 190,701.97, South 27 degrees 16 minutes 31 seconds East 300.17 feet to a point having Coordinates of X = 2,259,285.46 and Y = 190,435.17, South 21 degrees 19 minutes 23 seconds East 127.03 feet to a point having Coordinates of X = 2,259,331.65 and Y = 190,316.84, South 23 degrees 05 minutes 12 seconds East 152.58 feet to a

point having Coordinates of X = 2,259,391.48 and Y = 190,176.48, South 31 degrees 21 minutes 18 seconds East 83.87 feet to a point having Coordinates of X = 2,259,435.12 and Y = 190,104.86, South 42 degrees 01 minutes 22 seconds East 81.68 feet to a point having Coordinates of X = 2,259,489.80 and Y = 190,044.18, South 56 degrees 03 minutes 50 seconds East 59.43 feet to a point having Coordinates of X = 2,259,539.11 and Y = 190,011.00, South 65 degrees 18 minutes 40 seconds East 66.39 feet to a point having Coordinates of X = 2,259,599.43 and Y = 189,983.27, South 77 degrees 29 minutes 15 seconds East 64.67 feet to a point having Coordinates of X = 2,259,662.56 and Y = 189,969.26, South 87 degrees 54 minutes 06 seconds East 85.21 feet to a point having Coordinates of X = 2,259,747.71 and Y = 189,966.14, North 83 degrees 32 minutes 27 seconds East 94.05 feet to a point having Coordinates of X = 2,259,841.16 and Y = 189,976.72, North 74 degrees 18 minutes 23 seconds East 160.00 feet to a point having Coordinates of X = 2,259,995.20 and Y = 190,020.00, North 74 degrees 08 minutes 11 seconds East 257.36 feet to a point having Coordinates of X = 2,260,242.76 and Y = 190,090.35, North 74 degrees 49 minutes 41 seconds East 247.94 feet to a point having Coordinates of X = 2,260,482.06 and Y = 190,155.24, North 74 degrees 18 minutes 20 seconds East 100.00 feet to a point having Coordinates of X = 2,260,578.33 and Y = 190,182.29, North 83 degrees 54 minutes 47 seconds East 124.39 feet to a point having Coordinates of X = 2,260,702.02 and Y = 190,195.48, South 89 degrees 14 minutes 18 seconds East 307.71 feet to a point having Coordinates of X = 2,261,009.70 and Y = 190,191.39, South 87 degrees 02 minutes 46 seconds East 349.29 feet to a point having Coordinates of X = 2,261,358.53 and Y = 190,173.39, South 87 degrees 01 minutes 27 seconds East 404.31 feet to a point having Coordinates of X = 2,261,762.29 and Y = 190,152.40, South 86 degrees 28 minutes 47 seconds East 288.93 feet to a point having Coordinates of X = 2,262,050.67 and Y = 190,134.66, South 88 degrees 40 minutes 12 seconds East 291.27 feet to a point having Coordinates of X = 2,262,341.86 and Y = 190,127.90, South 85 degrees 42 minutes 06 seconds East 176.12 feet to a point having Coordinates of X = 2,262,517.48 and Y = 190,114.70, South 79 degrees 48 minutes 20 seconds East 96.50 feet to a point having Coordinates of X = 2,262,612.46 and Y = 190,097.62, South 79 degrees 48 minutes 15 seconds East 141.80 feet to a point having Coordinates of X = 2,262,752.02 and Y = 190,072.52, South 79 degrees 48 minutes 22 seconds East 217.71 feet to a point having Coordinates of X = 2,262,966.29 and Y = 190,033.99, South 79 degrees 48 minutes 14 seconds East 58.92 feet to a point having Coordinates of X = 2,263,024.28 and Y = 190,023.56, South 81 degrees 27 minutes 42 seconds East 138.34 feet to a point having Coordinates of X = 2,263,161.09 and Y = 190,003.02, South 81 degrees 27 minutes 46 seconds East 302.65 feet to a point having Coordinates of X = 2,263,460.39 and Y = 189,958.09, South 81 degrees 27 minutes 15 seconds East 61.57 feet to a point having Coordinates of X = 2,263,521.28 and Y = 189,948.94, South 81 degrees 54 minutes 37 seconds East 168.91 feet to a point having Coordinates of X = 2,263,688.51 and Y = 189,925.17, South 81 degrees 54 minutes 39 seconds East 613.23 feet to the point of beginning, containing approximately **70 acres**, all as more particularly outlined on a plat on file in the Office of Mineral Resources, Department of Natural Resources. All bearings,

distances and coordinates are based on Louisiana Coordinate System of 1927, (North or South Zone), where applicable.

NOTE: The above description of the Tract nominated for lease has been provided and corrected, where required, exclusively by the nomination party. Any mineral lease selected from this Tract and awarded by the Louisiana State Mineral Board shall be without warranty of any kind, either express, implied, or statutory, including, but not limited to, the implied warranties of merchantability and fitness for a particular purpose. Should the mineral lease awarded by the Louisiana State Mineral Board be subsequently modified, cancelled or abrogated due to the existence of conflicting leases, operating agreements, private claims or other future obligations or conditions which may affect all or any portion of the leased Tract, it shall not relieve the Lessee of the obligation to pay any bonus due thereon to the Louisiana State Mineral Board, nor shall the Louisiana State Mineral Board be obligated to refund any consideration paid by the Lessor prior to such modification, cancellation, or abrogation, including, but not limited to, bonuses, rentals and royalties.

NOTE: The mineral lease is located in the Three Rivers Wildlife Management Area under the jurisdiction of the Louisiana Department of Wildlife and Fisheries which has promulgated rules and regulations for the protection of game and wildlife on the aforesaid Tract and, therefore, shall be subject to said rules and regulations, a copy of which shall be attached to the mineral lease. In addition to the specific rules and regulations applicable, the following shall apply regarding operations under this mineral lease:

1. No activities will be allowed without written authorization from the Louisiana Department of Wildlife and Fisheries.
2. Projects will be evaluated on a case by case basis. Modifications to projects may be required including, but not limited to, access routes, spoil placement, well sites, flow lines and other appurtenant structures.
3. Mitigation will be required to offset avoidable wetland impacts.
4. Removal of all structures, facilities and equipment will be required within 120 days of abandonment unless otherwise agreed to by the Louisiana Department of Wildlife and Fisheries.
5. Prior to submitting applications for wetland permits to Federal and State permitting agencies the lease holder shall coordinate project details with the Louisiana Department of Wildlife and Fisheries, Fur and Refuge Division. Contact person for the Department will be Mike Windham at (504) 568-5886.

Applicant: Stephen M. Jenkins, Inc.

Bidder	Cash Payment	Price / Acre	Rental	Oil	Gas	Other



T3N - R8E

RED RIVER

AVOYELLES PARISH

T2N - R8E

T2N - R8E

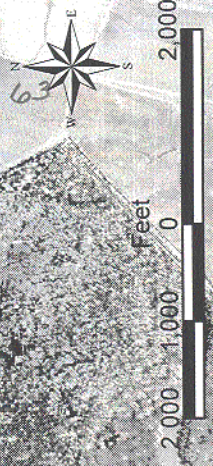
TR 35418
70.00 +/- ACRES
MAY, 2003

THREE RIVERS WMA

CONCORDIA PARISH

SL 4250

P.O.B.
X=2,264,295.64
Y=189,838.88



TRACT 35419 - Evangeline Parish, Louisiana

All of the land adjudicated to and acquired by the State of Louisiana in and through a proper tax sale, as pertaining to mineral rights only, which is not under valid mineral lease from the State of Louisiana on May 14, 2003, situated in Evangeline Parish, Louisiana, and being more fully described as follows: The Northwest Quarter (NW/4) of the Northeast Quarter (NE/4) of Section 22, Township 1 South, Range 1 East, Evangeline Parish, Louisiana, adjudicated to the State of Louisiana for non-payment of taxes for the year of 1911-1912 in the name of W. M. and T. J. Roberts, Et al, recorded under COB A2, Page 460, Entry No. 1334-1/2 of the records of Evangeline Parish, Louisiana, and patented to A.E. Deville as Homestead No. 1486, Patent No. 16784, containing approximately **40 acres**, all as more particularly outlined on a plat on file in the Office of Mineral Resources, Department of Natural Resources.

NOTE: The above description of the Tract nominated for lease has been provided and corrected, where required, exclusively by the nomination party. Any mineral lease selected from this Tract and awarded by the Louisiana State Mineral Board shall be without warranty of any kind, either express, implied, or statutory, including, but not limited to, the implied warranties of merchantability and fitness for a particular purpose. Should the mineral lease awarded by the Louisiana State Mineral Board be subsequently modified, cancelled or abrogated due to the existence of conflicting leases, operating agreements, private claims or other future obligations or conditions which may affect all or any portion of the leased Tract, it shall not relieve the Lessee of the obligation to pay any bonus due thereon to the Louisiana State Mineral Board, nor shall the Louisiana State Mineral Board be obligated to refund any consideration paid by the Lessor prior to such modification, cancellation, or abrogation, including, but not limited to, bonuses, rentals and royalties.

Applicant: Chesapeake Operating, Inc.

Bidder	Cash Payment	Price / Acre	Rental	Oil	Gas	Other



RAPIDES PARISH

T1S R2E

T1S R2E

T1S R1E

S.L. 16878

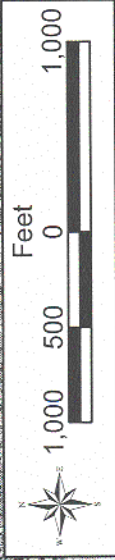
S.L. 15000

TR 35419
40 +/- ACRES
MAY, 2003

HUBBAR BRAKE

EVANGELINE PARISH

T1S R1E



TRACT 35420 - Calcasieu and Cameron Parishes, Louisiana

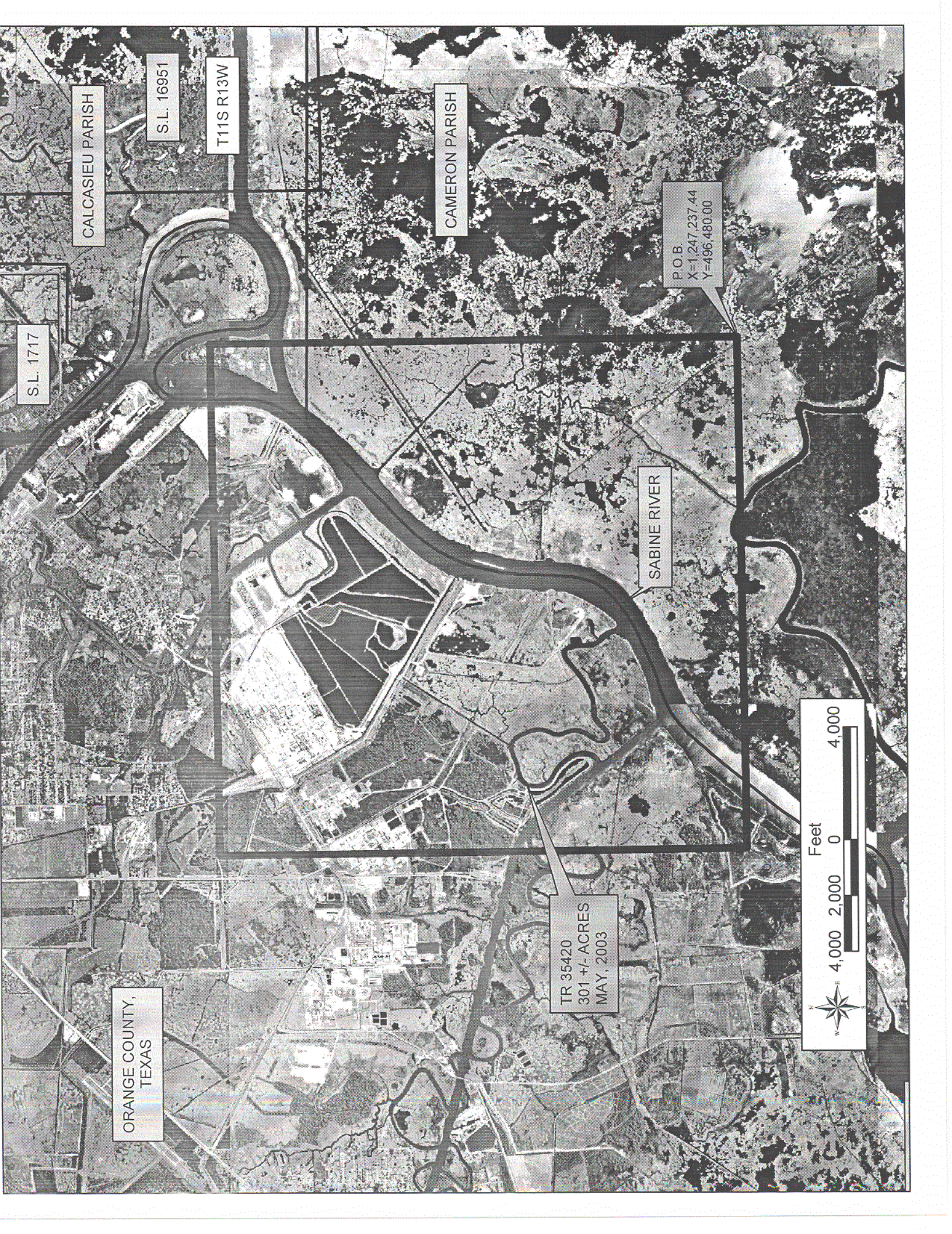
All of the lands now or formerly constituting the beds and bottoms of all water bodies of every nature and description, and all islands and other lands formed by accretion, where allowed by law, or by reliction, and excepting tax adjudicated lands, belonging to the State of Louisiana and not presently under mineral lease on May 14, 2003, situated in Calcasieu and Cameron Parishes, Louisiana, and more particularly described as follows: Beginning at a point having Coordinates of X = 1,247,237.44 and Y = 496,480.00; thence West 18,200.00 feet to a point having Coordinates of X = 1,229,037.44 and Y = 496,480.00; thence North 18,480.00 feet to a point having Coordinates of X = 1,229,037.44 and Y = 514,960.00; thence East 18,200.00 feet to a point having Coordinates of X = 1,247,237.44 and Y = 514,960.00; thence South 18,480.00 feet to the point of beginning, containing approximately **301 acres, LESS AND EXCEPT** that portion thereof, if any, located West of the boundary line between the States of Texas and Louisiana as determined by the report of the Special Master and adjudicated by the Supreme Court of the United States in litigation styled **Texas v. Louisiana, et al No. 36 Original**, or as otherwise approved by said court, all as more particularly outlined on a plat on file in the Office of Mineral Resources, Department of Natural Resources. All bearings, distances and coordinates are based on Louisiana Coordinate System of 1927, (North or South Zone), where applicable.

NOTE: The above description of the Tract nominated for lease has been provided and corrected, where required, exclusively by the nomination party. Any mineral lease selected from this Tract and awarded by the Louisiana State Mineral Board shall be without warranty of any kind, either express, implied, or statutory, including, but not limited to, the implied warranties of merchantability and fitness for a particular purpose. Should the mineral lease awarded by the Louisiana State Mineral Board be subsequently modified, cancelled or abrogated due to the existence of conflicting leases, operating agreements, private claims or other future obligations or conditions which may affect all or any portion of the leased Tract, it shall not relieve the Lessee of the obligation to pay any bonus due thereon to the Louisiana State Mineral Board, nor shall the Louisiana State Mineral Board be obligated to refund any consideration paid by the Lessor prior to such modification, cancellation, or abrogation, including, but not limited to, bonuses, rentals and royalties.

NOTE: The State of Louisiana does hereby reserve, and this lease shall be subject to, the imprescriptible right of surface use in the nature of a servitude in favor of the Department of Natural Resources, including its Offices and Commissions, for the sole purpose of implementing, constructing, servicing and maintaining approved coastal zone management and/or restoration projects. Utilization of any and all rights derived under this lease by the mineral lessee, its agents, successors or assigns, shall not interfere with nor hinder the reasonable surface use by the Department of Natural Resources, its Offices or Commissions, as herein above reserved.

Applicant: Cypress Energy Corporation

Bidder	Cash Payment	Price / Acre	Rental	Oil	Gas	Other



CALCASIEU PARISH

S.L. 16951

T11S R13W

CAMERON PARISH

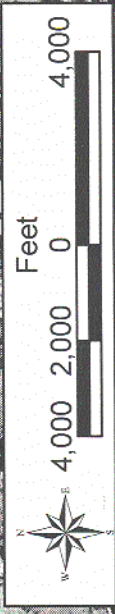
S.L. 1717

P.O.B.
X=1,247,237.44
Y=496,480.00

SABINE RIVER

ORANGE COUNTY,
TEXAS

TR 35420
301 +/- ACRES
MAY, 2003



TRACT 35421 - Cameron Parish, Louisiana

All of the lands now or formerly constituting the beds and bottoms of all water bodies of every nature and description, and all islands and other lands formed by accretion, where allowed by law, or by reliction, and excepting tax adjudicated lands, belonging to the State of Louisiana and not presently under mineral lease on May 14, 2003, situated in Cameron Parish, Louisiana, and more particularly described as follows: Beginning at the Southeast corner of State Lease No. 17701 having Coordinates of X = 1,224,000.00 and Y = 478,000.00; thence North 2,263.33 feet along the East line of said State Lease No. 17701 to its point of intersection with State Lease No. 7555, as amended, having Coordinates of X = 1,224,000.00 and Y = 480,263.33; thence along the boundary of said State Lease No. 7555 as follows: Easterly, Northeasterly, Northerly, Northwesterly, Northerly, Northeasterly, Northerly and Northwesterly to its most Northern tip having Coordinates of X = 1,222,955.74 and Y = 489,245.88; thence North 7,234.12 feet to a point having Coordinates of X = 1,222,955.74 and Y = 496,480.00; thence East 10,571.85 feet to a point having Coordinates of X = 1,233,527.59 and Y = 496,480.00; thence South 18,480.00 feet to a point having Coordinates of X = 1,233,527.59 and Y = 478,000.00; thence West 9,527.59 feet to the point of beginning, **LESS AND EXCEPT** all that portion of State Lease No. 7555, as amended, that may lie within the boundaries of the above described tract, containing approximately **1,679 acres, LESS AND EXCEPT** that portion thereof, if any, located West of the boundary line between the States of Texas and Louisiana as determined by the report of the Special Master and adjudicated by the Supreme Court of the United States in litigation styled **Texas v. Louisiana, et al No. 36 Original**, or as otherwise approved by said court, all as more particularly outlined on a plat on file in the Office of Mineral Resources, Department of Natural Resources. All bearings, distances and coordinates are based on Louisiana Coordinate System of 1927, (North or South Zone), where applicable.

NOTE: The above description of the Tract nominated for lease has been provided and corrected, where required, exclusively by the nomination party. Any mineral lease selected from this Tract and awarded by the Louisiana State Mineral Board shall be without warranty of any kind, either express, implied, or statutory, including, but not limited to, the implied warranties of merchantability and fitness for a particular purpose. Should the mineral lease awarded by the Louisiana State Mineral Board be subsequently modified, cancelled or abrogated due to the existence of conflicting leases, operating agreements, private claims or other future obligations or conditions which may affect all or any portion of the leased Tract, it shall not relieve the Lessee of the obligation to pay any bonus due thereon to the Louisiana State Mineral Board, nor shall the Louisiana State Mineral Board be obligated to refund any consideration paid by the Lessor prior to such modification, cancellation, or abrogation, including, but not limited to, bonuses, rentals and royalties.

NOTE: The State of Louisiana does hereby reserve, and this lease shall be subject to, the imprescriptible right of surface use in the nature of a servitude in favor of the Department of Natural Resources, including its

Offices and Commissions, for the sole purpose of implementing, constructing, servicing and maintaining approved coastal zone management and/or restoration projects. Utilization of any and all rights derived under this lease by the mineral lessee, its agents, successors or assigns, shall not interfere with nor hinder the reasonable surface use by the Department of Natural Resources, its Offices or Commissions, as herein above reserved.

Applicant: Cypress Energy Corporation

Bidder	Cash Payment	Price / Acre	Rental	Oil	Gas	Other

JEFFERSON COUNTY,
TEXAS

CAMERON PARISH

SABINE LAKE

T13S R14W

S.L. 3459

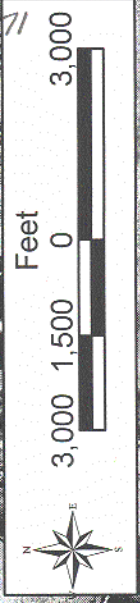
S.L. 7555

S.L. 17701

S.L. 17420

TR 35421
1,679.00 +/- ACRES
MAY, 2003

P.O.B.
X=1,224,000.00
Y=478,000.00



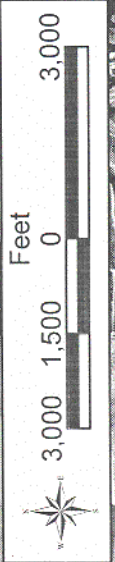
TRACT 35422 - Jefferson Davis Parish, Louisiana

All of the lands now or formerly constituting the beds and bottoms of all water bodies of every nature and description, and all islands and other lands formed by accretion, where allowed by law, or by reliction, and excepting tax adjudicated lands, belonging to the State of Louisiana and not presently under mineral lease on May 14, 2003, situated in Jefferson Davis Parish, Louisiana, and more particularly described as follows: Beginning a point having Coordinates of X = 1,475,200.00 and Y = 634,000.00; thence East 11,200.00 feet to a point having Coordinates of X = 1,486,400.00 and Y = 634,000.00; thence South 7,346.48 feet to a point having Coordinates of X = 1,486,400.00 and Y = 626,653.52; thence North 89 degrees 02 minutes 07 seconds West 11,201.59 feet to a point having Coordinates of X = 1,475,200.00 and Y = 626,842.11; thence North 7,157.89 feet to the point of beginning, containing approximately **21.5 acres**, all as more particularly outlined on a plat on file in the Office of Mineral Resources, Department of Natural Resources. All bearings, distances and coordinates are based on Louisiana Coordinate System of 1927, (North or South Zone), where applicable.

NOTE: The above description of the Tract nominated for lease has been provided and corrected, where required, exclusively by the nomination party. Any mineral lease selected from this Tract and awarded by the Louisiana State Mineral Board shall be without warranty of any kind, either express, implied, or statutory, including, but not limited to, the implied warranties of merchantability and fitness for a particular purpose. Should the mineral lease awarded by the Louisiana State Mineral Board be subsequently modified, cancelled or abrogated due to the existence of conflicting leases, operating agreements, private claims or other future obligations or conditions which may affect all or any portion of the leased Tract, it shall not relieve the Lessee of the obligation to pay any bonus due thereon to the Louisiana State Mineral Board, nor shall the Louisiana State Mineral Board be obligated to refund any consideration paid by the Lessor prior to such modification, cancellation, or abrogation, including, but not limited to, bonuses, rentals and royalties.

Applicant: Petro-Land Resources, Inc.

Bidder	Cash Payment	Price / Acre	Rental	Oil	Gas	Other



S.L. 16504

TR 35422
21.50 +/- ACRES
MAY, 2003

P.O.B.
X=1,475,200.00
Y=634,000.00

JEFFERSON DAVIS PARISH

S.L. 16505

T8S R6W

T7S R6W



TRACT 35423 - Jefferson Davis Parish, Louisiana

All of the lands now or formerly constituting the beds and bottoms of all water bodies of every nature and description, and all islands and other lands formed by accretion, where allowed by law, or by reliction, and excepting tax adjudicated lands, belonging to the State of Louisiana and not presently under mineral lease on May 14, 2003, situated in Jefferson Davis Parish, Louisiana, and more particularly described as follows: Beginning a point having Coordinates of X = 1,491,694.00 and Y = 637,200.00; thence East 5,306.00 feet to a point having Coordinates of X = 1,497,000.00 and Y = 637,200.00; thence South 11,000.00 feet to a point having Coordinates of X = 1,497,000.00 and Y = 626,200.00; thence West 5,306.00 feet to a point having Coordinates of X = 1,491,694.00 and Y = 626,200.00; thence North 11,000.00 feet to the point of beginning, containing approximately **17.5 acres**, all as more particularly outlined on a plat on file in the Office of Mineral Resources, Department of Natural Resources. All bearings, distances and coordinates are based on Louisiana Coordinate System of 1927, (North or South Zone), where applicable.

NOTE: The above description of the Tract nominated for lease has been provided and corrected, where required, exclusively by the nomination party. Any mineral lease selected from this Tract and awarded by the Louisiana State Mineral Board shall be without warranty of any kind, either express, implied, or statutory, including, but not limited to, the implied warranties of merchantability and fitness for a particular purpose. Should the mineral lease awarded by the Louisiana State Mineral Board be subsequently modified, cancelled or abrogated due to the existence of conflicting leases, operating agreements, private claims or other future obligations or conditions which may affect all or any portion of the leased Tract, it shall not relieve the Lessee of the obligation to pay any bonus due thereon to the Louisiana State Mineral Board, nor shall the Louisiana State Mineral Board be obligated to refund any consideration paid by the Lessor prior to such modification, cancellation, or abrogation, including, but not limited to, bonuses, rentals and royalties.

Applicant: Petro-Land Resources, Inc.

Bidder	Cash Payment	Price / Acre	Rental	Oil	Gas	Other

JEFFERSON DAVIS PARISH

P.O.B.
X=1,491,694.00
Y=637,200.00

T7S - R5W

TR 35423
17.50 +/- ACRES
MAY, 2003

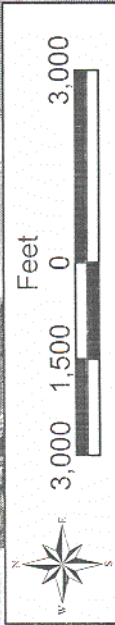
T8S - R5W

T7S - R6W

S.L. 16504

T8S - R6W

S.L. 16505



TRACT 35424 - Iberville Parish, Louisiana

All of the lands now or formerly constituting the beds and bottoms of all water bodies of every nature and description, and all islands and other lands formed by accretion, where allowed by law, or by reliction, and excepting tax adjudicated lands, belonging to the State of Louisiana and not presently under mineral lease on May 14, 2003, situated in Iberville Parish, Louisiana, and more particularly described as follows: Beginning at a point having Coordinates of X = 1,998,910.00 and Y = 550,720.00; thence South 7,360.00 feet to a point having Coordinates of X = 1,998,910.00 and Y = 543,360.00; thence West 1,324.16 feet to a point on the boundary of State Lease No. 1833, as amended, having Coordinates of X = 1,997,585.84 and Y = 543,360.00; thence along the boundary of said State Lease No. 1833, as amended, the following courses: North 33 degrees 32 minutes 28 seconds East 269.95 feet to a point having Coordinates of X = 1,997,735.00 and Y = 543,585.00; North 28 degrees 40 minutes 23 seconds East 364.73 feet to a point having Coordinates of X = 1,997,910.00 and Y = 543,905.00; North 17 degrees 10 minutes 33 seconds East 287.84 feet to a point having Coordinates of X = 1,997,995.00 and Y = 544,180.00; North 82 degrees 37 minutes 55 seconds West 584.83 feet to a point having Coordinates of X = 1,997,415.00 and Y = 544,255.00; North 85 degrees 14 minutes 11 seconds West 541.87 feet to a point having Coordinates of X = 1,996,875.00 and Y = 544,300.00; North 88 degrees 06 minutes 24 seconds West 605.33 feet to a point having Coordinates of X = 1,996,270.00 and Y = 544,320.00; South 85 degrees 49 minutes 31 seconds West 686.82 feet to a point having Coordinates of X = 1,995,585.00 and Y = 544,270.00; South 82 degrees 20 minutes 58 seconds West 676.02 feet to a point having Coordinates of X = 1,994,915.00 and Y = 544,180.00; South 76 degrees 20 minutes 58 seconds West approximately 458 feet; North approximately 679 feet; West approximately 1,327 feet; South approximately 1,073 feet; South 70 degrees 24 minutes 58 seconds West approximately 157 feet to a point having Coordinates of X = 1,992,995.00 and Y = 543,625.00; South 63 degrees 01 minutes 31 seconds West 510.01 feet to a point having Coordinates of X = 1,992,540.48 and Y = 543,393.66 and South 56 degrees 56 minutes 56 seconds West 55.88 feet to its Southwest corner, said corner also being the Northwest corner of State Lease No. 13366, as amended, having Coordinates of X = 1,992,493.64 and Y = 543,363.18; thence along the boundary of said State Lease No. 13366, as amended, the following courses: South 56 degrees 56 minutes 56 seconds West 565.08 feet to a point having Coordinates of X = 1,992,020.00 and Y = 543,055.00; South 55 degrees 41 minutes 47 seconds West 647.65 feet to a point having Coordinates of X = 1,991,485.00 and Y = 542,690.00 and South 52 degrees 37 minutes 27 seconds West approximately 233 feet to a point on the Eastern boundary of State Lease No. 2102, as amended; thence Northerly approximately 1,627 feet along the Eastern boundary of said State Lease No. 2102 to a point on the boundary of State Lease No. 15358, as amended; thence along the boundary of said State Lease No. 15358 the following courses: Northeasterly on an arc to the left having a radius of 1,776.00 feet and a chord bearing of North 34 degrees 02 minutes 13 seconds East approximately 476 feet to a point having Coordinates of X = 1,991,594.82 and Y = 544,600.83; Northeasterly on an arc to the left having a radius of

17,842.00 feet and a chord bearing of North 23 degrees 12 minutes 24 seconds East 1,949.42 feet to a point having Coordinates of X = 1,992,362.99 and Y = 546,392.52 and Southwesterly on an arc to the left having a radius of 13,888.00 feet and a chord bearing of South 60 degrees 49 minutes 08 seconds West approximately 1,209 feet to a point on the Eastern boundary of said State Lease No. 2102; thence Northerly approximately 2,897 feet along the Eastern boundary of said State Lease No. 2102 to its Northeast corner; thence Northerly approximately 2,025 feet to a point having Coordinates of X = 1,991,300.00 and Y = 550,720.00; thence East 7,610.00 feet to the point of beginning, containing approximately **132 acres**, all as more particularly outlined on a plat on file in the Office of Mineral Resources, Department of Natural Resources. All bearings, distances and coordinates are based on Louisiana Coordinate System of 1927, (North or South Zone), where applicable.

NOTE: The above description of the Tract nominated for lease has been provided and corrected, where required, exclusively by the nomination party. Any mineral lease selected from this Tract and awarded by the Louisiana State Mineral Board shall be without warranty of any kind, either express, implied, or statutory, including, but not limited to, the implied warranties of merchantability and fitness for a particular purpose. Should the mineral lease awarded by the Louisiana State Mineral Board be subsequently modified, cancelled or abrogated due to the existence of conflicting leases, operating agreements, private claims or other future obligations or conditions which may affect all or any portion of the leased Tract, it shall not relieve the Lessee of the obligation to pay any bonus due thereon to the Louisiana State Mineral Board, nor shall the Louisiana State Mineral Board be obligated to refund any consideration paid by the Lessor prior to such modification, cancellation, or abrogation, including, but not limited to, bonuses, rentals and royalties.

Applicant: Alpha Land Services, Inc.

Bidder	Cash Payment	Price / Acre	Rental	Oil	Gas	Other

P.O.B.
X=1,998,910.00
Y=550,720.00

TR 35424
132.00 +/- ACRES
MAY, 2003

BAYOU MARINGOUIN

T10S R11E

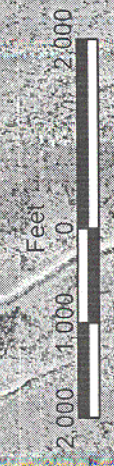
S.L. 1833

S.L. 13366

IBERVILLE PARISH

S.L. 2102

S.L. 15358



TRACT 35425 - Iberia and St. Mary Parishes, Louisiana

All of the lands now or formerly constituting the beds and bottoms of all water bodies of every nature and description, and all islands and other lands formed by accretion, where allowed by law, or by reliction, and excepting tax adjudicated lands, belonging to the State of Louisiana and not presently under mineral lease on May 14, 2003, situated in Iberia and St. Mary Parishes, Louisiana, and more particularly described as follows: Beginning at a point having Coordinates of X = 1,920,950.00 and Y = 307,600.00; thence South approximately 9,980 feet to a point of intersection with the Northern boundary of State Lease No. 340, as amended; thence Westerly approximately 10,910 feet along the Northern boundary of said State Lease No. 340 to a point of intersection with a North-South line having a Coordinate of X = 1,910,040.00; thence North approximately 9,955 feet to a point having Coordinates of X = 1,910,040.00 and Y = 307,600.00; thence East 10,910.00 feet to the point of beginning, containing approximately **2,496 acres**, all as more particularly outlined on a plat on file in the Office of Mineral Resources, Department of Natural Resources. All bearings, distances and coordinates are based on Louisiana Coordinate System of 1927, (North or South Zone), where applicable.

NOTE: The above description of the Tract nominated for lease has been provided and corrected, where required, exclusively by the nomination party. Any mineral lease selected from this Tract and awarded by the Louisiana State Mineral Board shall be without warranty of any kind, either express, implied, or statutory, including, but not limited to, the implied warranties of merchantability and fitness for a particular purpose. Should the mineral lease awarded by the Louisiana State Mineral Board be subsequently modified, cancelled or abrogated due to the existence of conflicting leases, operating agreements, private claims or other future obligations or conditions which may affect all or any portion of the leased Tract, it shall not relieve the Lessee of the obligation to pay any bonus due thereon to the Louisiana State Mineral Board, nor shall the Louisiana State Mineral Board be obligated to refund any consideration paid by the Lessor prior to such modification, cancellation, or abrogation, including, but not limited to, bonuses, rentals and royalties.

NOTE: The Department of Wildlife and Fisheries has designated certain areas in the coastal waters of the State of Louisiana as Oyster Seed Bed Areas. The exact location of those Seed Bed Areas must be obtained from the Department of Wildlife and Fisheries and any work done under a mineral lease from the State of Louisiana may necessarily be conducted in conformity with the rules and regulations promulgated by the said Department of Wildlife and Fisheries for Oyster Seed Bed Areas.

NOTE: The State of Louisiana does hereby reserve, and this lease shall be subject to, the imprescriptible right of surface use in the nature of a servitude in favor of the Department of Natural Resources, including its Offices and Commissions, for the sole purpose of implementing, constructing, servicing and maintaining approved coastal zone management and/or restoration projects. Utilization of any and all rights derived

under this lease by the mineral lessee, its agents, successors or assigns, shall not interfere with nor hinder the reasonable surface use by the Department of Natural Resources, its Offices or Commissions, as herein above reserved.

Applicant: Bunnier Resources, L.L.C.

Bidder	Cash Payment	Price / Acre	Rental	Oil	Gas	Other

P.O.B
X=1,920,950.00
Y=307,600.00

ST MARY PARISH

TR 35425
2,496.00 +/- ACRES
MAY, 2003

BLOCK E10400

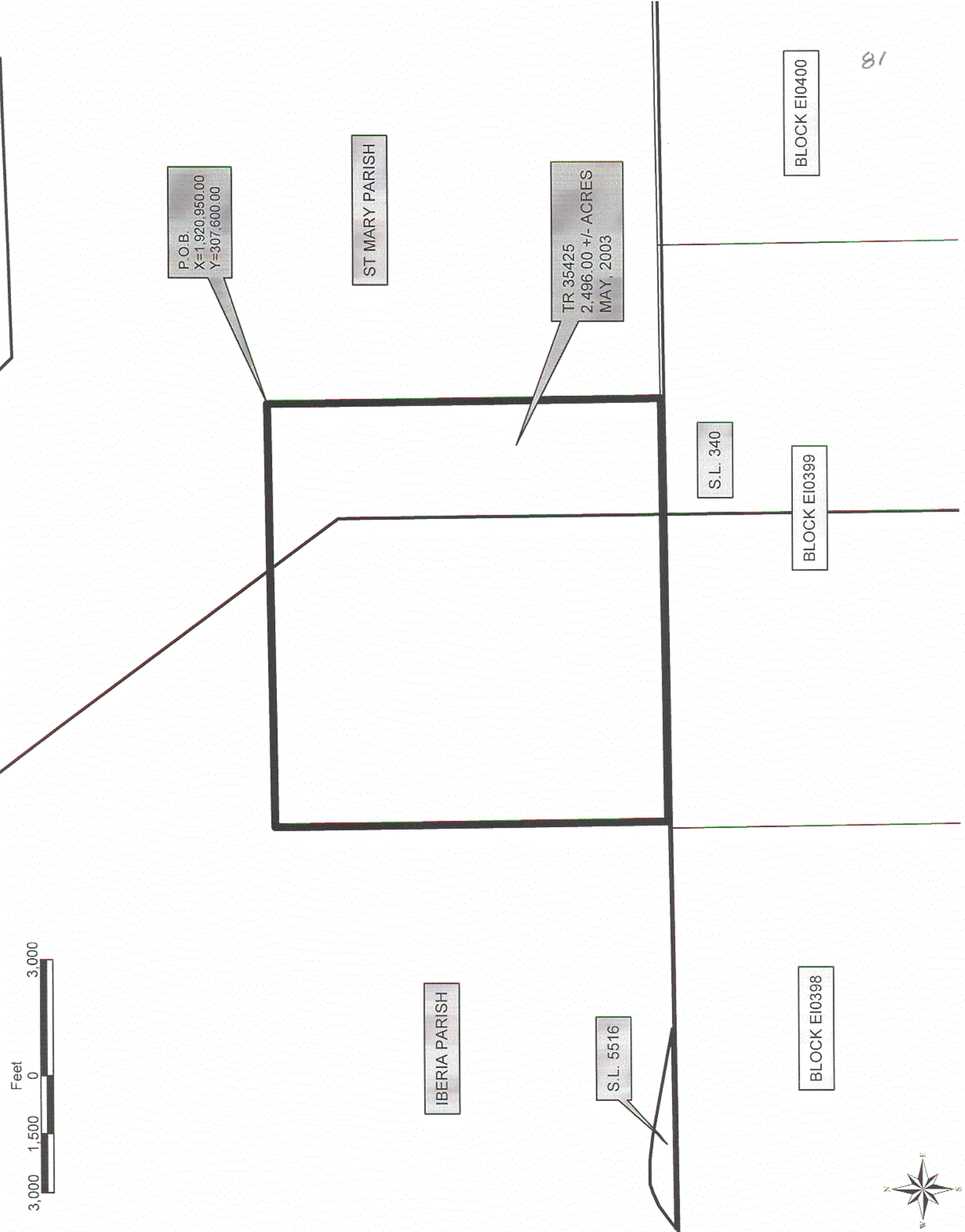
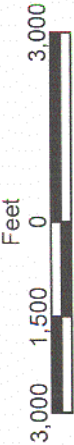
S.L. 340

BLOCK E10399

IBERIA PARISH

S.L. 5516

BLOCK E10398



TRACT 35426 - St. Mary Parish, Louisiana

All of the lands now or formerly constituting the beds and bottoms of all water bodies of every nature and description, and all islands and other lands formed by accretion, where allowed by law, or by reliction, and excepting tax adjudicated lands, belonging to the State of Louisiana and not presently under mineral lease on May 14, 2003, situated in St. Mary Parish, Louisiana, and more particularly described as follows: Beginning at a point having Coordinates of X = 1,920,950.00 and Y = 307,600.00; thence East 9,669.00 feet to a point on the West line of the Atchafalaya Delta Wildlife Management Area having Coordinates of X = 1,930,619.00 and Y = 307,600.00; thence South approximately 10,003 feet along the West line of said Atchafalaya Delta Wildlife Management Area to a point of intersection with the Northern boundary of State Lease No. 340, as amended; thence Westerly approximately 9,669 feet along the Northern boundary of said State Lease No. 340 to a point of intersection with a North-South line having a Coordinate of X = 1,920,950.00; thence North approximately 9,980 feet to the point of beginning, **LESS AND EXCEPT** that portion of State Lease No. 340, as amended, that may lie within the above described tract, containing approximately **2,218 acres**, all as more particularly outlined on a plat on file in the Office of Mineral Resources, Department of Natural Resources. All bearings, distances and coordinates are based on Louisiana Coordinate System of 1927, (North or South Zone), where applicable.

NOTE: The above description of the Tract nominated for lease has been provided and corrected, where required, exclusively by the nomination party. Any mineral lease selected from this Tract and awarded by the Louisiana State Mineral Board shall be without warranty of any kind, either express, implied, or statutory, including, but not limited to, the implied warranties of merchantability and fitness for a particular purpose. Should the mineral lease awarded by the Louisiana State Mineral Board be subsequently modified, cancelled or abrogated due to the existence of conflicting leases, operating agreements, private claims or other future obligations or conditions which may affect all or any portion of the leased Tract, it shall not relieve the Lessee of the obligation to pay any bonus due thereon to the Louisiana State Mineral Board, nor shall the Louisiana State Mineral Board be obligated to refund any consideration paid by the Lessor prior to such modification, cancellation, or abrogation, including, but not limited to, bonuses, rentals and royalties.

NOTE: The Department of Wildlife and Fisheries has designated certain areas in the coastal waters of the State of Louisiana as Oyster Seed Bed Areas. The exact location of those Seed Bed Areas must be obtained from the Department of Wildlife and Fisheries and any work done under a mineral lease from the State of Louisiana may necessarily be conducted in conformity with the rules and regulations promulgated by the said Department of Wildlife and Fisheries for Oyster Seed Bed Areas.

NOTE: The State of Louisiana does hereby reserve, and this lease shall be subject to, the imprescriptible right of surface use in the nature of a

servitude in favor of the Department of Natural Resources, including its Offices and Commissions, for the sole purpose of implementing, constructing, servicing and maintaining approved coastal zone management and/or restoration projects. Utilization of any and all rights derived under this lease by the mineral lessee, its agents, successors or assigns, shall not interfere with nor hinder the reasonable surface use by the Department of Natural Resources, its Offices or Commissions, as herein above reserved.

Applicant: Bunnier Resources, L.L.C.

Bidder	Cash Payment	Price / Acre	Rental	Oil	Gas	Other

84

T17S - R9E

ST MARY PARISH

TR 35426
2,218.00 +/- ACRES
MAY, 2003

ATCHAFALAYA
DELTA WMA

BLOCK EI0400

S.L. 340

P.O.B.
X=1,920,950.00
Y=307,600.00

IBERIA PARISH

BLOCK EI0399

