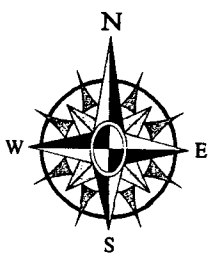
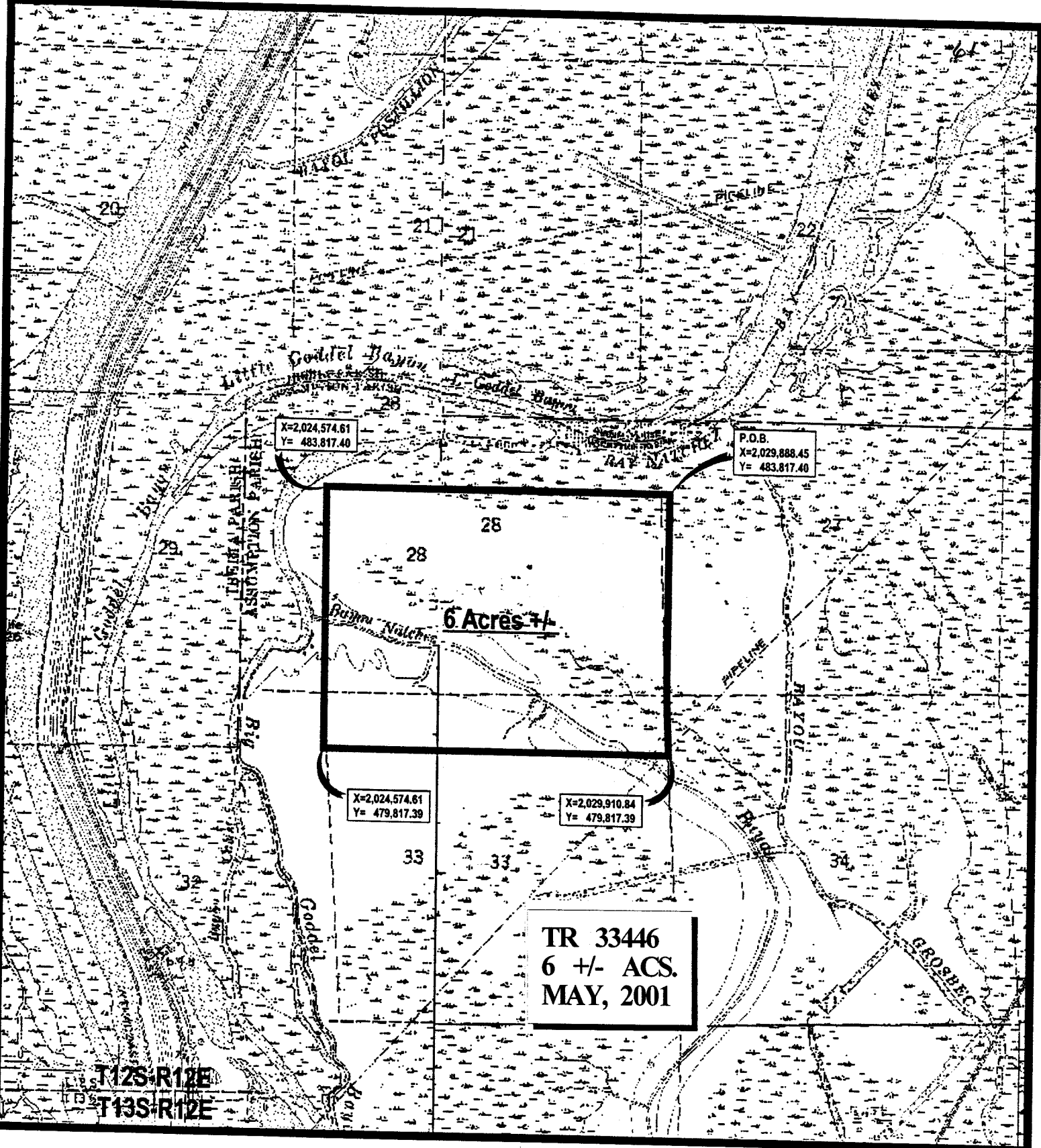


a new lease will be issued and any additional per acre bonus/rental, 10% administration fee or \$10 and \$5 per acre fees due as a result of staff determination of more State acreage in the bid area than determined by the successful bidder will be paid prior to the lease being issued. A determination of less State acreage in the bid area will result in a return to the successful bidder of any overpayment.

Applicant: Coastal Land Services, Inc.

Bidder	Cash Payment	Price / Acre	Rental	Oil	Gas	Other



**PLAT ACCOMPANYING APPLICATION  
FOR STATE LEASE  
ASSUMPTION PARISH, LOUISIANA**

1" = 2,000'

**TRACT 33447 - St. Mary Parish, Louisiana**

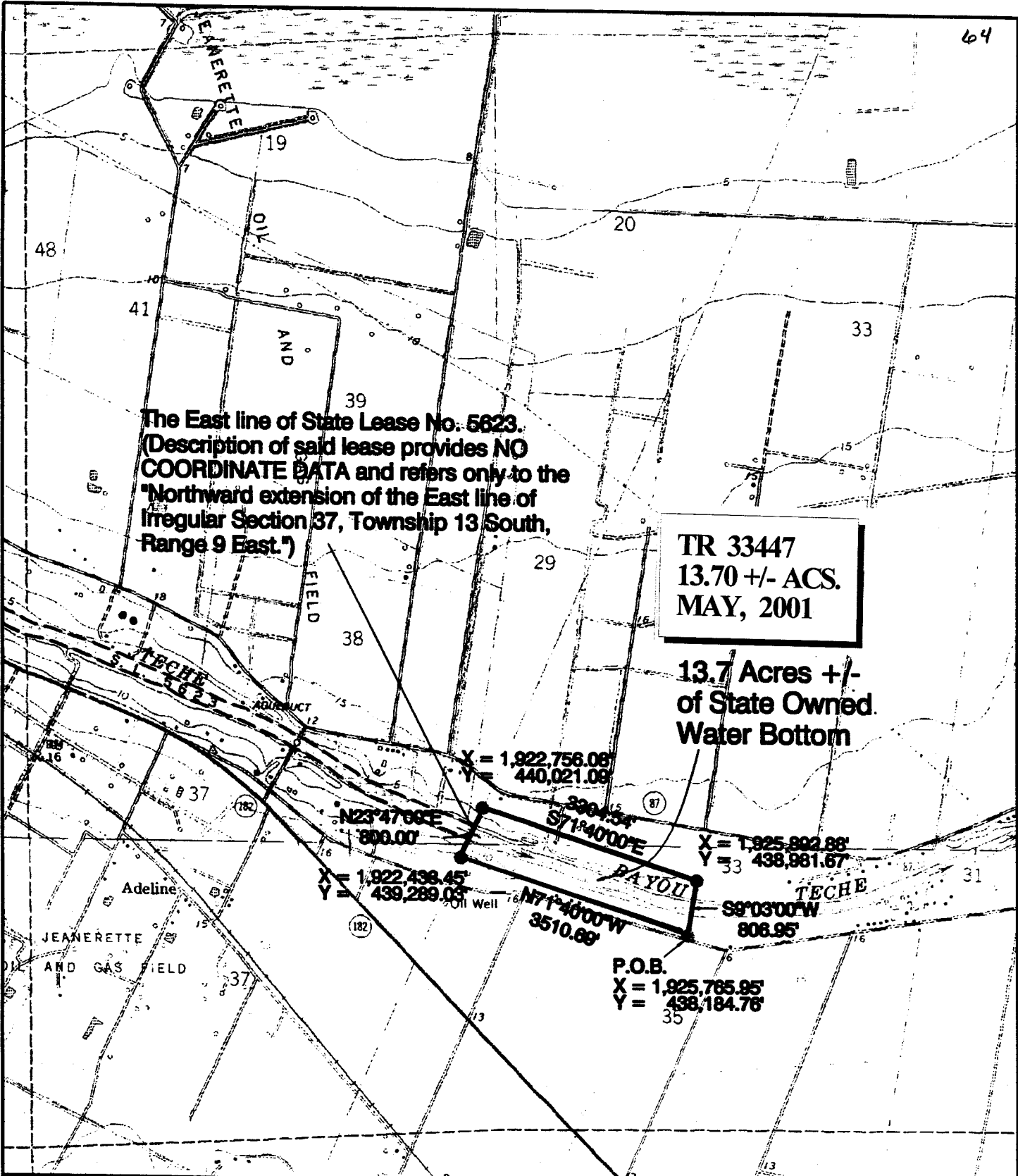
All of the lands now or formerly constituting the beds and bottoms of all water bodies of every nature and description and all islands and other lands formed by accretion or reliction, except tax lands, owned by and not under mineral lease from the State of Louisiana on May 9, 2001, situated in St. Mary Parish, Louisiana, within the following described boundaries: Beginning at a point having Coordinates of X = 1,925,765.95 and Y = 438,184.76; thence North 71 degrees 40 minutes 00 seconds West 3,510.69 feet to a point on the Southerly extension of the East line of State Lease No. 5623 having coordinates of X = 1,922,433.45 and Y = 439,289.03; thence North 23 degrees 47 minutes 00 seconds East 800.00 feet, passing by and along the East line of said State Lease No. 5623, to a point on the Northerly extension thereof having Coordinates of X = 1,922,756.08 and Y = 440,021.09; thence South 71 degrees 40 minutes 00 seconds East 3,304.54 feet to a point having Coordinates of X = 1,925,892.88 and Y = 438,981.67; thence South 09 degrees 03 minutes 00 seconds West 806.95 feet to the point of beginning, **LESS AND EXCEPT** all that portion of State Lease No. 5623 that may lie within the above described tract as of March 5, 2001, containing approximately 13.70 acres, as shown outlined in red on a plat on file in the Office of Mineral Resources, Department of Natural Resources, as provided by the applicant. All bearings, distances and coordinates are based on Louisiana Coordinate System of 1927 (South Zone).

NOTE: The boundary description and plat for this tract as shown and as advertised were supplied by the nominating party and have not been checked for accuracy by the staff of the Office of Mineral Resources. Anything which may affect the acreage, the shape or the location of the tract, such as non-closure of or incorrect X, Y coordinates or title disputed acreage, or which may affect the status of the tract for leasing, such as overlap of prior leases or nominated tracts, or which may affect potential operations on leases taken, such as inclusion in areas under the jurisdiction of the Department of Wildlife and Fisheries, will not be specifically determined unless and until a bid on this tract is accepted by the Mineral Board; which bid will be accepted on a per acre basis and which acceptance will be conditional upon such specific determinations being made. Once a bid is conditionally accepted by the Mineral Board, the staff will, within a period following the date of the lease sale, determine the acreage, shape and location of the potential lease area of the tract, the status for leasing of all or any portion thereof, and any conditions which may affect potential operations thereon. These determinations may render all or a portion of the bid area unleaseable or may increase or decrease the State claimed acreage such that the total bonus/rental ultimately required may either exceed the bonus/rental paid at the lease sale, which will require additional payment by the successful bidder, or allow the successful bidder a refund of excessive payment. The successful bidder will be notified of the determinations by the staff and given an opportunity to view the bid area acreage, configuration and location as it has been specifically determined. If all or a portion of the bid area is unleaseable due to overlap of an existing lease, the successful bidder will be given an opportunity to accept or reject a new lease on that portion of the bid area which is not unleaseable. If rejected, the

bid and all monies accompanying the bid will be returned to the successful bidder and no lease will be issued. In all other cases a new lease will be issued and any additional per acre bonus/rental, 10% administration fee or \$10 and \$5 per acre fees due as a result of staff determination of more State acreage in the bid area than determined by the successful bidder will be paid prior to the lease being issued. A determination of less State acreage in the bid area will result in a return to the successful bidder of any overpayment.

Applicant: Norex Production Company, LLC

Bidder	Cash Payment	Price / Acre	Rental	Oil	Gas	Other



The East line of State Lease No. 5623.  
 (Description of said lease provides NO  
 COORDINATE DATA and refers only to the  
 "Northward extension of the East line of  
 Irregular Section 37, Township 13 South,  
 Range 9 East.")

**TR 33447**  
**13.70 +/- ACS.**  
**MAY, 2001**

**13.7 Acres +/-**  
**of State Owned**  
**Water Bottom**

$X = 1,922,756.08$   
 $Y = 440,021.09$   
 $N23^{\circ}47'00"E$   
 $800.00'$   
 $X = 1,922,438.45$   
 $Y = 439,289.03$   
 $S71^{\circ}40'00"E$   
 $390.45'$   
 $X = 1,925,802.88$   
 $Y = 438,981.67$   
 $S9^{\circ}03'00"W$   
 $806.95'$   
 $N71^{\circ}40'00"W$   
 $3510.89'$   
**P.O.B.**  
 $X = 1,925,765.95$   
 $Y = 438,184.76$

Plat Scale:  
 1in = 2,000ft

STATE LEASE NOMINATION PLAT  
**Inland Tract - State Owned Water Bottom**

BEING A PORTION OF  
**Bayou Teche**

LOCATED IN  
**Sections 33 & 35, Township 13 South, Range 9 East,**  
**St. Mary Parish, Louisiana**

USGS 7.5' Quadrangles:  
 CHARENTON & FRANKLIN, LA

All bearings, distances,  
 coordinates and areas  
 are based upon the  
 Louisiana State Plane  
 Coordinate System of  
 1927, South Zone

**TRACT 33448 - St. Mary Parish, Louisiana**

All of the lands now or formerly constituting the beds and bottoms of all water bodies of every nature and description and all islands and other lands formed by accretion or reliction, except tax lands, owned by and not under mineral lease from the State of Louisiana on May 9, 2001, situated in St. Mary Parish, Louisiana, within the following described boundaries: Beginning at the point having Coordinates of X = 1,952,332.17 and Y = 417,882.10; thence North for a distance of 13,937.90 feet to a point having Coordinates of X = 1,952,332.17 and Y = 431,820.00; thence East for a distance of 11,967.83 feet to a point having Coordinates of X = 1,964,300.00 and Y = 431,820.00; thence South for a distance of 13,937.90 feet to a point having Coordinates of X = 1,964,300.00 and Y = 417,882.10; thence West for a distance of 11,967.83 feet to the point of beginning, containing approximately **117 acres**, as shown outlined in red on a plat on file in the Office of Mineral Resources, Department of Natural Resources, as provided by the applicant. All bearings, distances and coordinates are based on Louisiana Coordinate System of 1927 (South Zone).

NOTE: The boundary description and plat for this tract as shown and as advertised were supplied by the nominating party and have not been checked for accuracy by the staff of the Office of Mineral Resources. Anything which may affect the acreage, the shape or the location of the tract, such as non-closure of or incorrect X, Y coordinates or title disputed acreage, or which may affect the status of the tract for leasing, such as overlap of prior leases or nominated tracts, or which may affect potential operations on leases taken, such as inclusion in areas under the jurisdiction of the Department of Wildlife and Fisheries, will not be specifically determined unless and until a bid on this tract is accepted by the Mineral Board; which bid will be accepted on a per acre basis and which acceptance will be conditional upon such specific determinations being made. Once a bid is conditionally accepted by the Mineral Board, the staff will, within a period following the date of the lease sale, determine the acreage, shape and location of the potential lease area of the tract, the status for leasing of all or any portion thereof, and any conditions which may affect potential operations thereon. These determinations may render all or a portion of the bid area unleaseable or may increase or decrease the State claimed acreage such that the total bonus/rental ultimately required may either exceed the bonus/rental paid at the lease sale, which will require additional payment by the successful bidder, or allow the successful bidder a refund of excessive payment. The successful bidder will be notified of the determinations by the staff and given an opportunity to view the bid area acreage, configuration and location as it has been specifically determined. If all or a portion of the bid area is unleaseable due to overlap of an existing lease, the successful bidder will be given an opportunity to accept or reject a new lease on that portion of the bid area which is not unleaseable. If rejected, the bid and all monies accompanying the bid will be returned to the successful bidder and no lease will be issued. In all other cases a new lease will be issued and any additional per acre bonus/rental, 10% administration fee or \$10 and \$5 per acre fees due as a result of staff determination of more State acreage in the bid area than

determined by the successful bidder will be paid prior to the lease being issued. A determination of less State acreage in the bid area will result in a return to the successful bidder of any overpayment.

Applicant: Petro-Land Resources, Inc.

Bidder	Cash Payment	Price / Acre	Rental	Oil	Gas	Other





**TRACT 33449 - St. Mary Parish, Louisiana**

All of the lands now or formerly constituting the beds and bottoms of all water bodies of every nature and description and all islands and other lands formed by accretion or reliction, except tax lands, owned by and not under mineral lease from the State of Louisiana on May 9, 2001, situated in St. Mary Parish, Louisiana, within the following described boundaries: Beginning at the Southwest corner of State Lease No. 16910 having Coordinates of X = 1,945,400.00 and Y = 276,011.88; thence East 1,258.52 feet along the South boundary of said State Lease No. 16910 to the Northwest corner of State Lease No. 16911 having Coordinates of X = 1,946,658.52 and Y = 276,011.88; thence along the boundaries of State Lease No. 16911 the following courses: South 1,011.88 feet to the most Westerly Southwest corner having Coordinates of X = 1,946,658.52 and Y = 275,000.00; East 6,641.48 feet to an inner corner having Coordinates of X = 1,953,300.00 and Y = 275,000.00; South 5,700.00 feet to the most Easterly Southwest corner having Coordinates of X = 1,953,300.00 and Y = 269,300.00; East 5,500.00 feet to the Southeast corner having Coordinates of X = 1,958,800.00 and Y = 269,300.00; thence South 2,980.57 feet to a point on the North boundary of Block 14, Eugene Island Area, Revised, having Coordinates of X = 1,958,800.00 and Y = 266,319.43; thence North 70 degrees 36 minutes 49 seconds West 9,647.93 feet along the North boundary of said Block 14 to its Northwest corner having Coordinates of X = 1,949,699.10 and Y = 269,521.94; thence North 60 degrees 29 minutes 58 seconds West 4,939.51 feet along the North boundary of Block 13, Eugene Island Area, Revised, to a point having Coordinates of X = 1,945,400.00 and Y = 271,954.32; thence North 4,057.56 feet to the point of beginning, containing approximately **1,209.23 acres**, as shown outlined in red on a plat on file in the Office of Mineral Resources, Department of Natural Resources, as provided by the applicant. All bearings, distances and coordinates are based on Louisiana Coordinate System of 1927 (South Zone).

NOTE: The boundary description and plat for this tract as shown and as advertised were supplied by the nominating party and have not been checked for accuracy by the staff of the Office of Mineral Resources. Anything which may affect the acreage, the shape or the location of the tract, such as non-closure of or incorrect X, Y coordinates or title disputed acreage, or which may affect the status of the tract for leasing, such as overlap of prior leases or nominated tracts, or which may affect potential operations on leases taken, such as inclusion in areas under the jurisdiction of the Department of Wildlife and Fisheries, will not be specifically determined unless and until a bid on this tract is accepted by the Mineral Board; which bid will be accepted on a per acre basis and which acceptance will be conditional upon such specific determinations being made. Once a bid is conditionally accepted by the Mineral Board, the staff will, within a period following the date of the lease sale, determine the acreage, shape and location of the potential lease area of the tract, the status for leasing of all or any portion thereof, and any conditions which may affect potential operations thereon. These determinations may render all or a portion of the bid area unleaseable or may increase or decrease the State claimed acreage such that the total bonus/rental ultimately required may either exceed the bonus/rental paid at the lease sale, which will require additional payment by the successful bidder, or allow the successful bidder a

refund of excessive payment. The successful bidder will be notified of the determinations by the staff and given an opportunity to view the bid area acreage, configuration and location as it has been specifically determined. If all or a portion of the bid area is unleaseable due to overlap of an existing lease, the successful bidder will be given an opportunity to accept or reject a new lease on that portion of the bid area which is not unleaseable. If rejected, the bid and all monies accompanying the bid will be returned to the successful bidder and no lease will be issued. In all other cases a new lease will be issued and any additional per acre bonus/rental, 10% administration fee or \$10 and \$5 per acre fees due as a result of staff determination of more State acreage in the bid area than determined by the successful bidder will be paid prior to the lease being issued. A determination of less State acreage in the bid area will result in a return to the successful bidder of any overpayment.

NOTE: This tract is located within the Atchafalaya Wildlife Management Area. Any operations on said tract shall be coordinated with the Louisiana Department of Wildlife and Fisheries. Special Rules and Regulations have been promulgated by the Louisiana Department of Wildlife and Fisheries for the protection of the game and wildlife for some management areas. Any lease awarded by the Board on said tract shall be subject to any applicable Rules and Regulations of said management area. Copies of these Rules and Regulations may be obtained from the Louisiana Department of Wildlife and Fisheries through the Assistant Secretary, Office of Wildlife, upon request.

- NOTE:
1. No activities will be allowed without written authorization of the Louisiana Department of Wildlife and Fisheries.
  2. Proposed projects will be evaluated on a case by case basis. Modifications to proposed project features including but not limited to access routes, spoil placement, well sites, flowlines and appurtenant structures may be required by the Department of Wildlife and Fisheries.
  3. Compliance with the Atchafalaya Delta WMA mineral regulations will be required unless otherwise specified by the Department of Wildlife and Fisheries.
  4. Compensatory mitigation will be required to offset unavoidable wetland impacts.
  5. Removal of all structures, facilities and equipment will be required within 120 days of abandonment unless otherwise agreed to in writing by the Department of Wildlife and Fisheries.
  6. No activities will be allowed during the hunting season unless authorized by the Department of Wildlife and Fisheries.
  7. Prior to submitting applications for wetland permits to Federal and State permitting agencies, the leaseholder shall coordinate