

Bidder	Cash Payment	Price / Acre	Rental	Oil	Gas	Other





**TRACT 32523 - STATE AGENCY - Ouachita Parish, Louisiana**

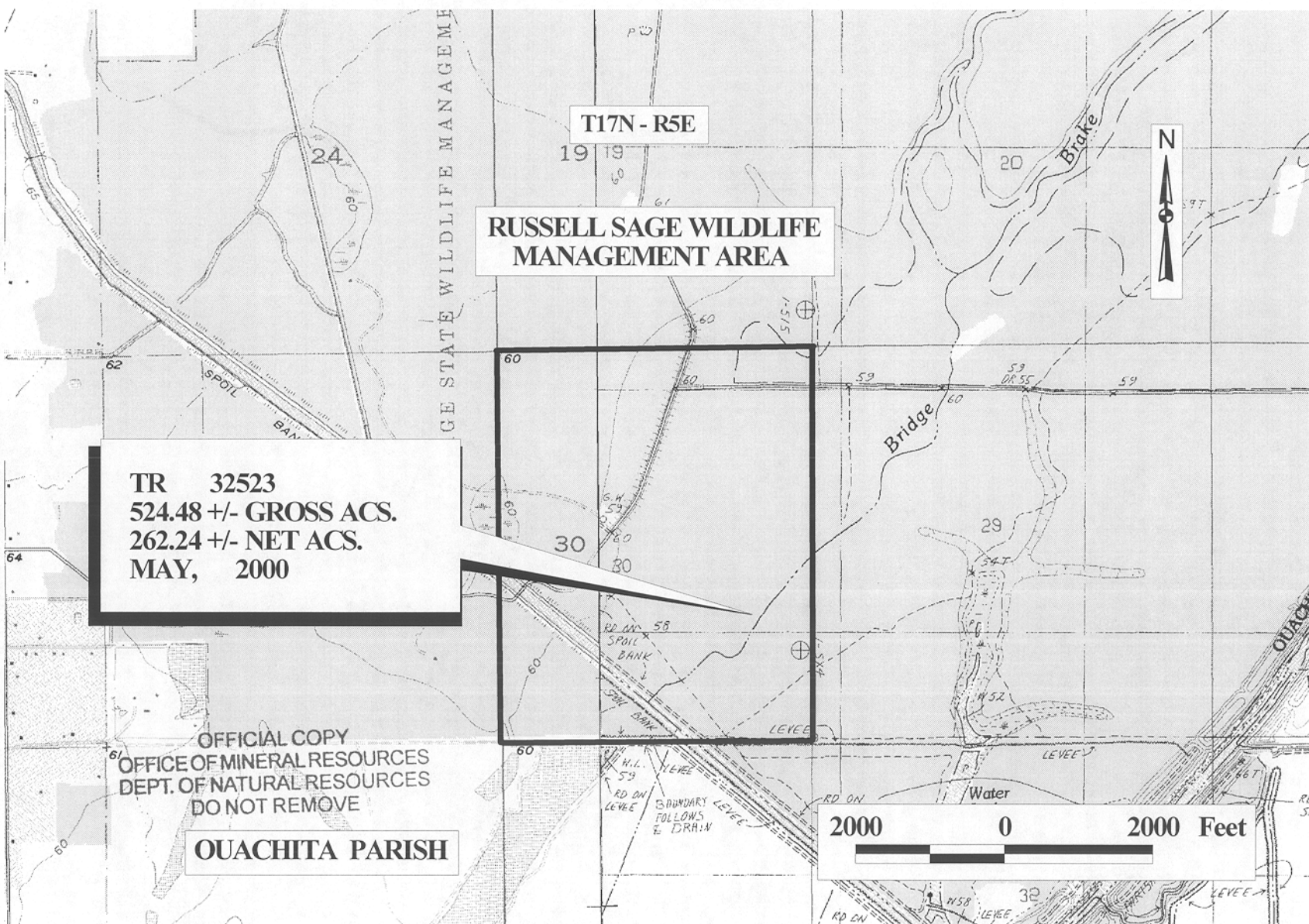
A certain tract of land belonging to and not under mineral lease from the Louisiana Department of Wildlife and Fisheries, on May 10, 2000, being more fully described as follows: All of Section 30, Township 17 North, Range 5 East, **LESS AND EXCEPT** any portion of State Agency Lease No. 6842, as amended, that may lie within the above described tract, excluding beds and bottoms of all navigable waters, containing approximately **524.48 gross acres and 262.24 net acres**, as shown outlined in red on a plat on file in the Office of Mineral Resources, Department of Natural Resources.

- NOTE:
1. No activities will be allowed without written authorization of the Louisiana Department of Wildlife and Fisheries. All projects will be coordinated and approved by the Russell Sage Wildlife Management Area Supervisor prior to any activities on the wildlife management area.
  2. Proposed projects will be evaluated on a case by case basis. Modifications to proposed project features including but not limited to access routes, well sites, flowlines and appurtenant structures may be required by the Louisiana Department of Wildlife and Fisheries.
  3. Compliance with the Russell Sage Management Area and mineral regulations will be required unless otherwise specified by the Department.
  4. Compensatory mitigation will be required to offset unavoidable habitat impacts.
  5. Removal of all structures, facilities and equipment will be required within 120 days of abandonment unless otherwise agreed to by the Department.
  6. No activities will be allowed during the hunting season unless approved by the Department.
  7. Prior to submitting applications for wetland permits to Federal and State permitting agencies, the lease holder shall coordinate project details with the Department.

**NOTE: The Department will require a minimum bonus of \$150.00 per acre and a minimum royalty of 25 percent.**

Applicant: Caruthers Producing Company, Inc. to Agency and by Letter from the Louisiana Department of Wildlife and Fisheries authorizing the Mineral Board to act in its behalf.

Bidder	Cash Payment	Price / Acre	Rental	Oil	Gas	Other



T17N - R5E

**RUSSELL SAGE WILDLIFE  
MANAGEMENT AREA**

**TR 32523  
524.48 +/- GROSS ACS.  
262.24 +/- NET ACS.  
MAY, 2000**

OFFICIAL COPY  
OFFICE OF MINERAL RESOURCES  
DEPT. OF NATURAL RESOURCES  
DO NOT REMOVE

**OUACHITA PARISH**

