

TR 32492
32 +/- ACS.
MAY, 2000

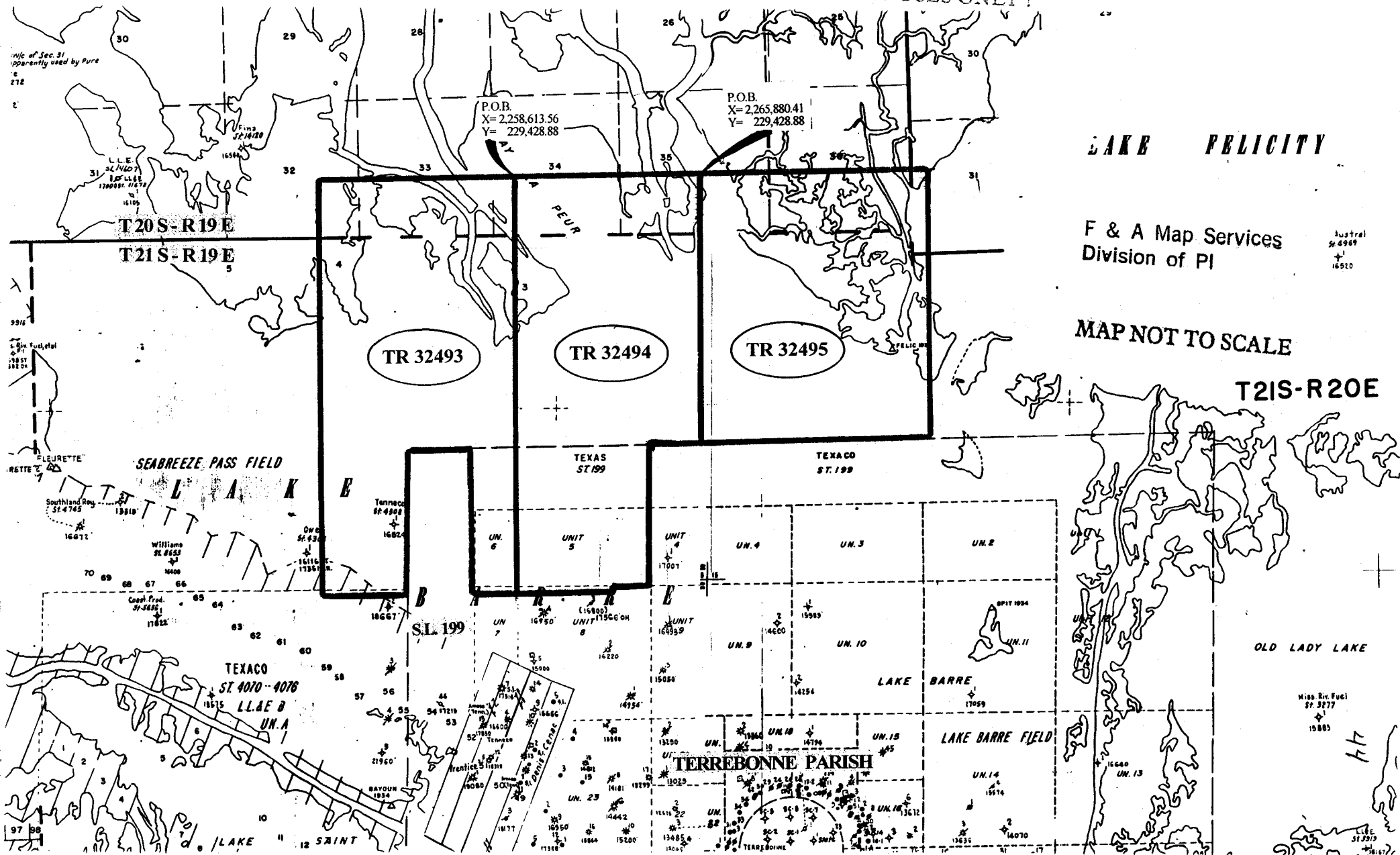
JUDGEMENT
AREA

P.O.B.
X=2,065,500.00
Y= 350,300.00

OFFICIAL COPY
OFFICE OF MINERAL RESOURCES
DEPT. OF NATURAL RESOURCES
DO NOT REMOVE

3000 0 3000 Feet

NOT TO BE USED WITH A PORTION BID
FOR INFORMATIONAL PURPOSES ONLY!



LAKE FELICITY

F & A Map Services
Division of PI

Austral
S₄ 4969
+
16520

MAP NOT TO SCALE

T21S-R20E

177

TRACT 32493 - Terrebonne Parish, Louisiana

All of the lands now or formerly constituting the beds and bottoms of all water bodies of every nature and description and all islands and other lands formed by accretion or reliction, except tax lands, owned by and not under mineral lease from the State of Louisiana on May 10, 2000, situated in Terrebonne Parish, Louisiana, within the following described boundaries: Beginning at a point having Coordinates of X = 2,258,613.56 and Y = 229,428.88; thence South approximately 16,691 feet to a point on the North boundary of State Lease No. 199, as amended, having a Coordinate of X = 2,258,613.56; thence along the Northern and Western boundary of said State Lease No. 199 the following courses: Westerly approximately 1,754 feet, Northerly 5,838.00 feet, Westerly 2,640.00 feet and Southerly approximately 5,769 feet to a point having a Coordinate of Y = 212,774.59; thence West approximately 3,294 feet to a point having Coordinates of X = 2,250,924.40 and Y = 212,774.59; thence North 16,654.29 feet to a point having Coordinates of X = 2,250,924.40 and Y = 229,428.88; thence East 7,689.16 feet to the point of beginning, **LESS AND EXCEPT** all that portion of State Lease No. 199, as amended, that may lie within the above described tract, containing approximately **2,500 acres**, as shown outlined in red on a plat on file in the Office of Mineral Resources, Department of Natural Resources. All bearings, distances and coordinates are based on Louisiana Coordinate System of 1927 (South Zone).

NOTE: The above tract is located in or near an oyster restricted area and all operations in such area must be conducted in strict conformity with the stipulations and/or regulations of the Louisiana Department of Wildlife and Fisheries.

NOTE: The State of Louisiana does hereby reserve, and this lease shall be subject to, the imprescriptible right of surface use in the nature of a servitude in favor of the Department of Natural Resources, including its Offices and Commissions, for the sole purpose of implementing, constructing, servicing and maintaining approved coastal zone management and/or restoration projects. Utilization of any and all rights derived under this lease by the mineral lessee, its agents, successors or assigns, shall not interfere with nor hinder the reasonable surface use by the Department of Natural Resources, its Offices or Commissions, as hereinabove reserved.

Applicant: South Louisiana Minerals, Inc.

Bidder	Cash Payment	Price / Acre	Rental	Oil	Gas	Other

T 20 S - R 19 E



P.O.B.
X= 2,258,613.56
Y= 229,428.88

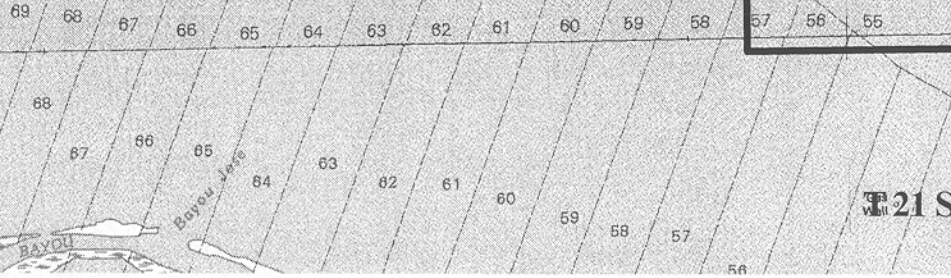
TR 32493
2500 + ACS.
MAY., 2000

TERREBONNE PARISH

S.L. 199

OFFICIAL COPY
OFFICE OF MINERAL RESOURCES
DEPT. OF NATURAL RESOURCES
DO NOT REMOVE

SEABREEZE PASS
GAS FIELD



T 21 S - R 19 E



L A K

TRACT 32494 - Terrebonne Parish, Louisiana

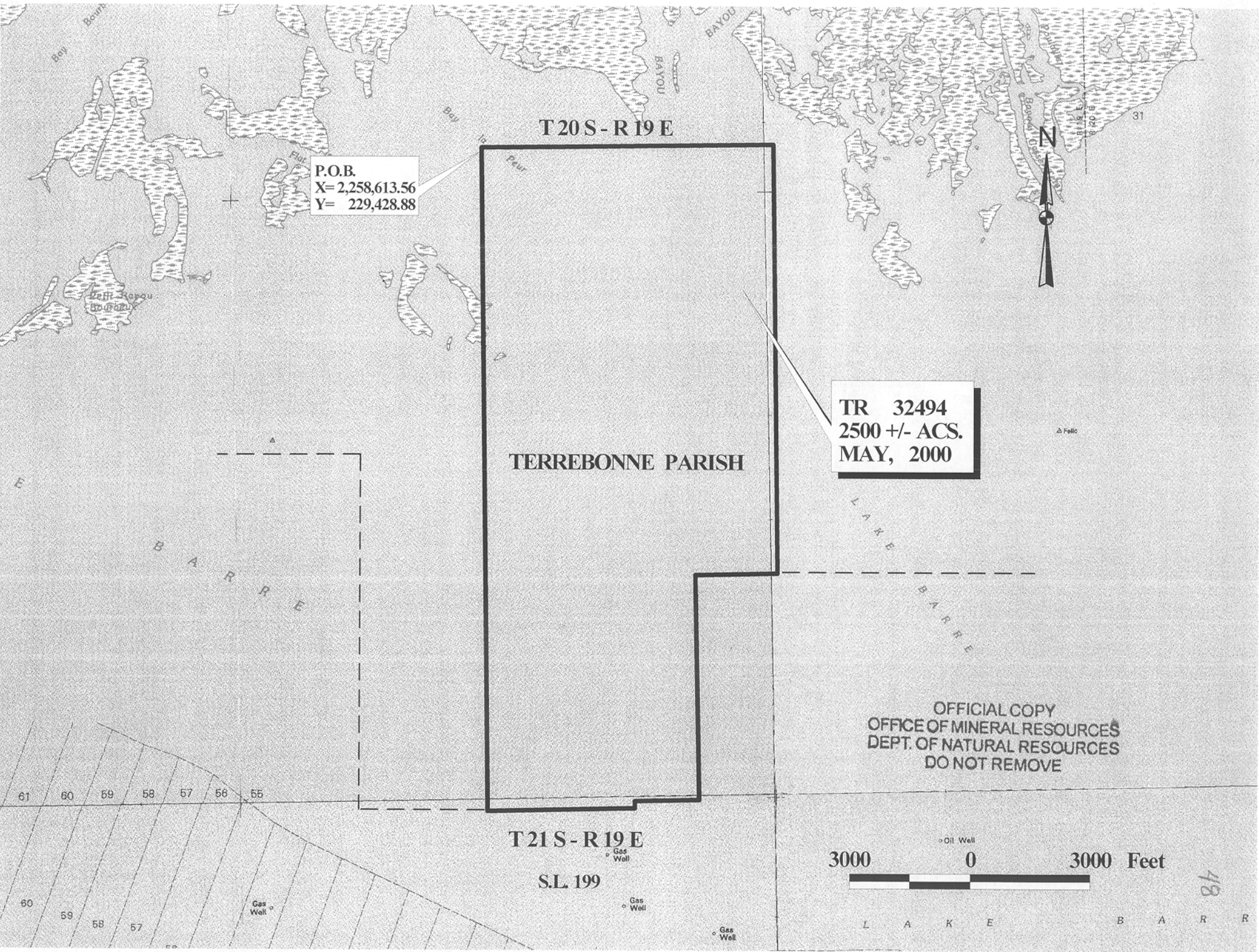
All of the lands now or formerly constituting the beds and bottoms of all water bodies of every nature and description and all islands and other lands formed by accretion or reliction, except tax lands, owned by and not under mineral lease from the State of Louisiana on May 10, 2000, situated in Terrebonne Parish, Louisiana, within the following described boundaries: Beginning at a point having Coordinates of X = 2,258,613.56 and Y = 229,428.88; thence East 7,266.86 feet to a point having Coordinates of X = 2,265,880.41 and Y = 229,428.88; thence South approximately 10,800 feet to a point on the North boundary of State Lease No. 199, as amended, having a Coordinate of X = 2,265,880.41; thence along the North boundary of said State Lease No. 199 the following courses: Westerly approximately 2,039 feet, Southerly 5,658.80 feet, Westerly 1,600.00 feet, Southerly 179.20 feet and Westerly approximately 3,671 feet to a point to a point having a Coordinate of X = 2,258,613.56; thence North approximately 16,691 feet to the point of beginning, **LESS AND EXCEPT** all that portion of State Lease No. 199, as amended, that may lie within the above described tract, containing approximately **2,500 acres**, as shown outlined in red on a plat on file in the Office of Mineral Resources, Department of Natural Resources. All bearings, distances and coordinates are based on Louisiana Coordinate System of 1927 (South Zone).

NOTE: The above tract is located in or near an oyster restricted area and all operations in such area must be conducted in strict conformity with the stipulations and/or regulations of the Louisiana Department of Wildlife and Fisheries.

NOTE: The State of Louisiana does hereby reserve, and this lease shall be subject to, the imprescriptible right of surface use in the nature of a servitude in favor of the Department of Natural Resources, including its Offices and Commissions, for the sole purpose of implementing, constructing, servicing and maintaining approved coastal zone management and/or restoration projects. Utilization of any and all rights derived under this lease by the mineral lessee, its agents, successors or assigns, shall not interfere with nor hinder the reasonable surface use by the Department of Natural Resources, its Offices or Commissions, as hereinabove reserved.

Applicant: South Louisiana Minerals, Inc.

Bidder	Cash Payment	Price / Acre	Rental	Oil	Gas	Other



T20 S - R 19 E

P.O.B.
X= 2,258,613.56
Y= 229,428.88

TR 32494
2500 +/- ACS.
MAY, 2000

TERREBONNE PARISH

OFFICIAL COPY
OFFICE OF MINERAL RESOURCES
DEPT. OF NATURAL RESOURCES
DO NOT REMOVE

T21 S - R 19 E

S.L. 199

3000 0 3000 Feet

48

L A K E B A R R E