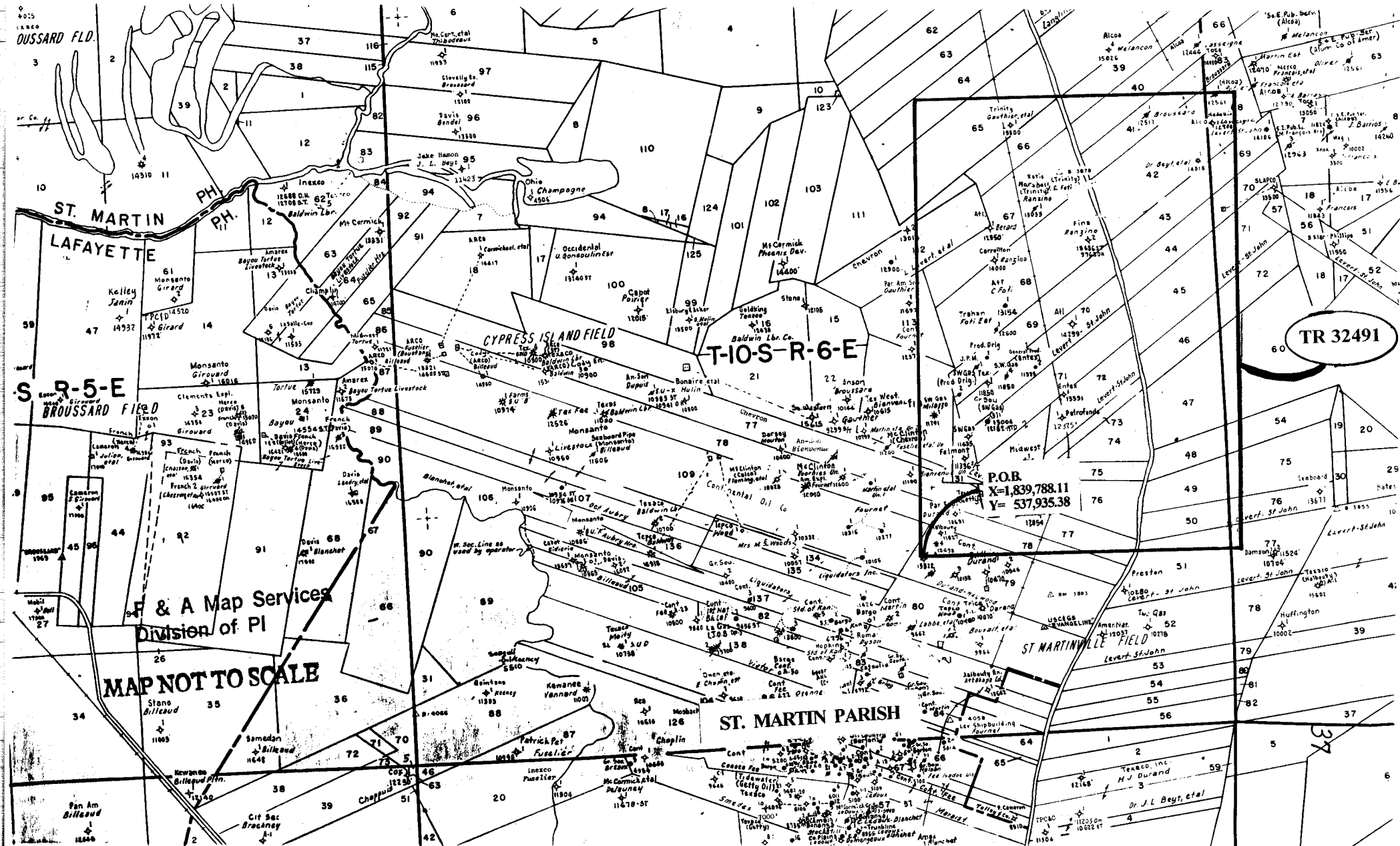


NOT TO BE USED WITH A PORTION BID  
FOR INFORMATIONAL PURPOSES ONLY!



**TRACT 32491 - St. Martin Parish, Louisiana**

All of the lands now or formerly constituting the beds and bottoms of all water bodies of every nature and description and all islands and other lands formed by accretion or reliction, except tax lands, owned by and not under mineral lease from the State of Louisiana on May 10, 2000, situated in St. Martin Parish, Louisiana, within the following described boundaries: Beginning at a point having Coordinates of X = 1,839,788.11 and Y = 537,935.38; thence North 16,730.41 feet to a point having Coordinates of X = 1,839,788.11 and Y = 554,665.79; thence North 89 degrees 59 minutes 59 seconds East 11,798.54 feet to a point having Coordinates of X = 1,851,586.65 and Y = 554,665.84; thence South 16,730.46 feet to a point having Coordinates of X = 1,851,586.65 and Y = 537,935.38; thence West 11,798.54 feet to the point of beginning, containing approximately 56 acres, as shown outlined in red on a plat on file in the Office of Mineral Resources, Department of Natural Resources. All bearings, distances and coordinates are based on Louisiana Coordinate System of 1927 (South Zone).

Applicant: American Seismic Land Abstract, LLC

Bidder	Cash Payment	Price / Acre	Rental	Oil	Gas	Other

T-10S-R-6E

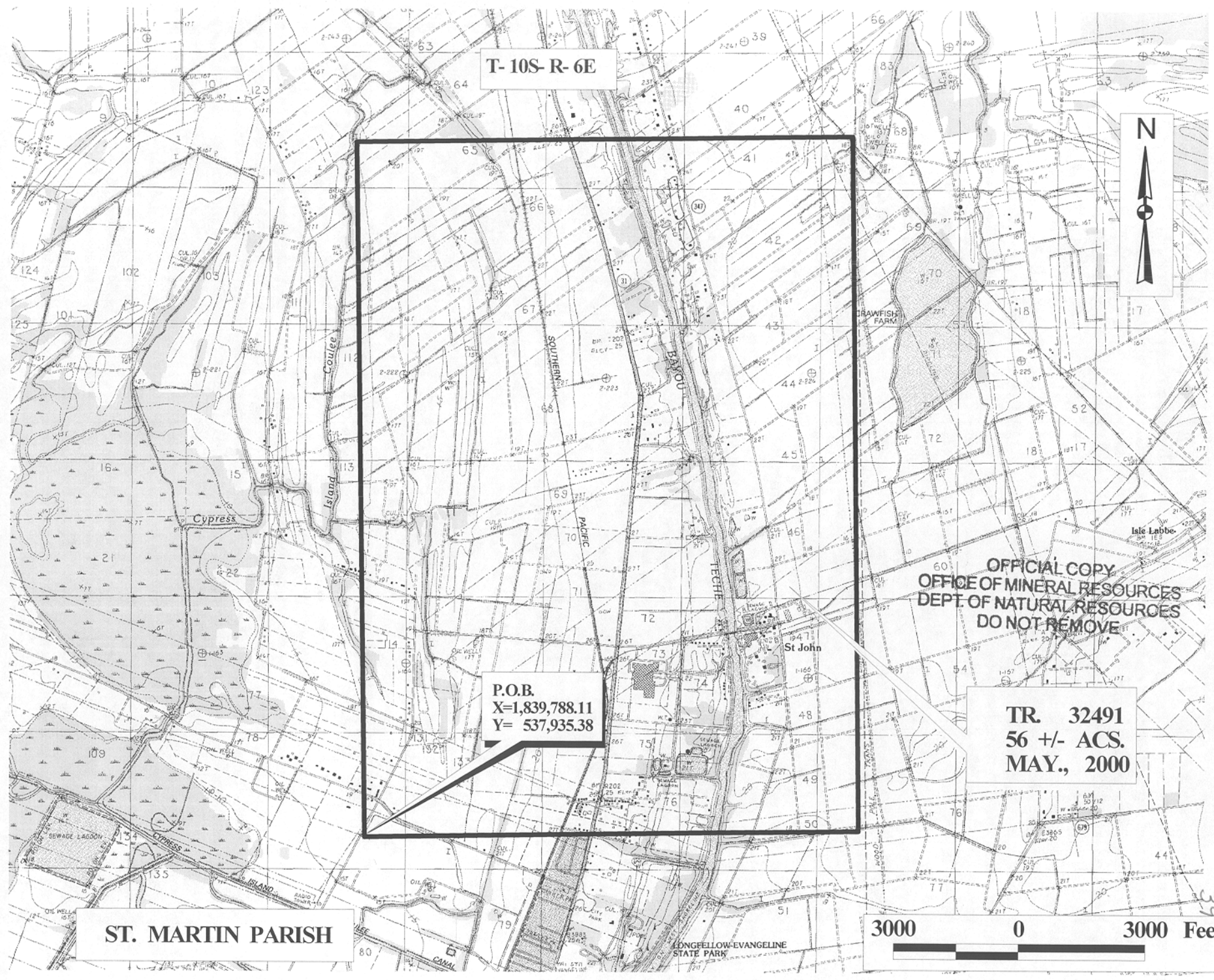
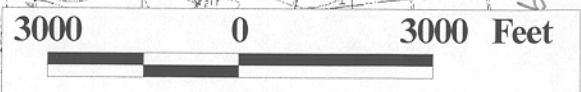


OFFICIAL COPY  
OFFICE OF MINERAL RESOURCES  
DEPT. OF NATURAL RESOURCES  
DO NOT REMOVE

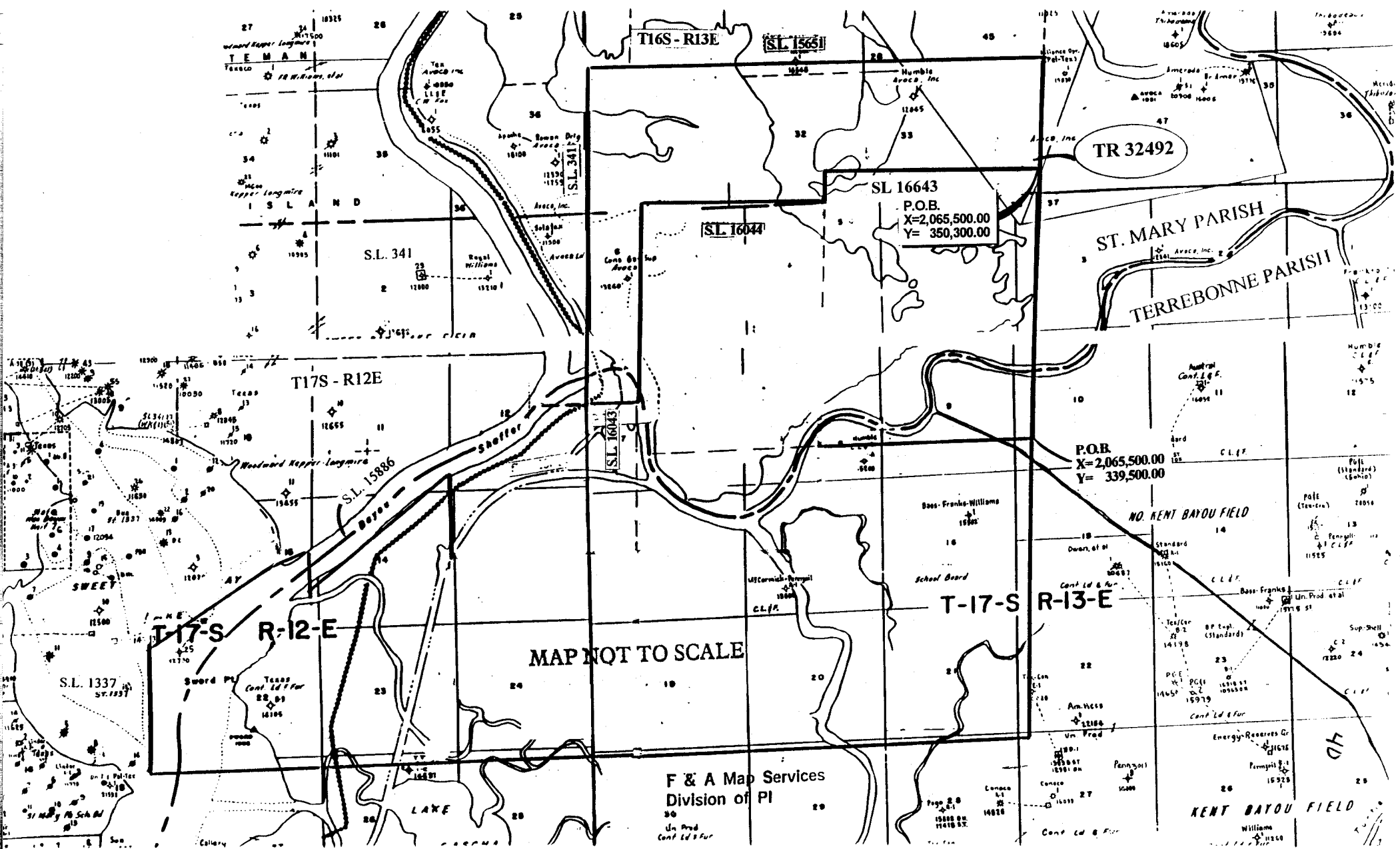
P.O.B.  
X=1,839,788.11  
Y= 537,935.38

TR. 32491  
56 +/- ACS.  
MAY., 2000

ST. MARTIN PARISH



NOT TO BE USED WITH A PORTION BID  
FOR INFORMATIONAL PURPOSES ONLY !



F & A Map Services  
Division of PI  
Un. Prod  
Cont. Ld. & Fur

HD

**TRACT 32492 - St. Mary Parish, Louisiana**

All of the lands now or formerly constituting the beds and bottoms of all water bodies of every nature and description and all islands and other lands formed by accretion or reliction, except tax lands, owned by and not under mineral lease from the State of Louisiana on May 10, 2000, situated in St. Mary Parish, Louisiana, within the following described boundaries: Beginning at the Northeast corner of State Lease No. 16643 having Coordinates of X = 2,065,500.00 and Y = 350,300.00; thence along the North and West boundaries of said State Lease No. 16643 the following courses: West 8,167.00 feet and South 1,200.00 feet to the Northeast corner of State Lease No. 16044 having Coordinates of X = 2,057,333.00 and Y = 349,100.00; thence along the North and West boundaries of said State Lease No. 16044 the following courses: West 7,000.00 feet and South approximately 7,800 feet to the Northeast corner of State Lease No. 16043 having a Coordinate of X = 2,050,333.00; thence Westerly approximately 1,833 feet along the North boundary of said State Lease No. 16043 to the Southeast corner of State Lease No. 341, as amended; thence Northerly approximately 13,029 feet along the East boundary of said State Lease No. 341 to a point having a Coordinate of Y = 354,249.42; thence East approximately 1,835 feet to the Southwest corner of State Lease No. 15651 having Coordinates of X = 2,050,333.00 and Y = 354,249.42; thence North 88 degrees 51 minutes 06 seconds East 15,170.05 feet along the South boundary of said State Lease No. 15651 to its Southeast corner having Coordinates of X = 2,065,500.00 and Y = 354,553.47; thence South 4,253.47 feet to the point of beginning, **LESS AND EXCEPT** all those portions of State Lease No. 16043 and State Lease No. 341, as amended, that may lie within the above described tract, containing approximately **32 acres**, as shown outlined in red on a plat on file in the Office of Mineral Resources, Department of Natural Resources. All bearings, distances and coordinates are based on Louisiana Coordinate System of 1927 (South Zone).

NOTE: A portion of the acreage in the above described tract is described in the Judgement of the 16<sup>th</sup> Judicial District Court, in that matter styled State of Louisiana v. Avoca, Incorporated, recorded in C.O.B. 10-E, Pg. 593, June 27, 1958 in the records of St. Mary Parish, Louisiana.

NOTE: The State of Louisiana does hereby reserve, and this lease shall be subject to, the imprescriptible right of surface use in the nature of a servitude in favor of the Department of Natural Resources, including its Offices and Commissions, for the sole purpose of implementing, constructing, servicing and maintaining approved coastal zone management and/or restoration projects. Utilization of any and all rights derived under this lease by the mineral lessee, its agents, successors or assigns, shall not interfere with nor hinder the reasonable surface use by the Department of Natural Resources, its Offices or Commissions, as hereinabove reserved.

Tract Advertised by the State Mineral Board

Bidder	Cash Payment	Price / Acre	Rental	Oil	Gas	Other