

T9S - R3E

TR 32488  
0.110 +/- ACS.  
MAY, 2000

OFFICIAL COPY  
OFFICE OF MINERAL RESOURCES  
DEPT. OF NATURAL RESOURCES  
DO NOT REMOVE

LAFAYETTE PARISH

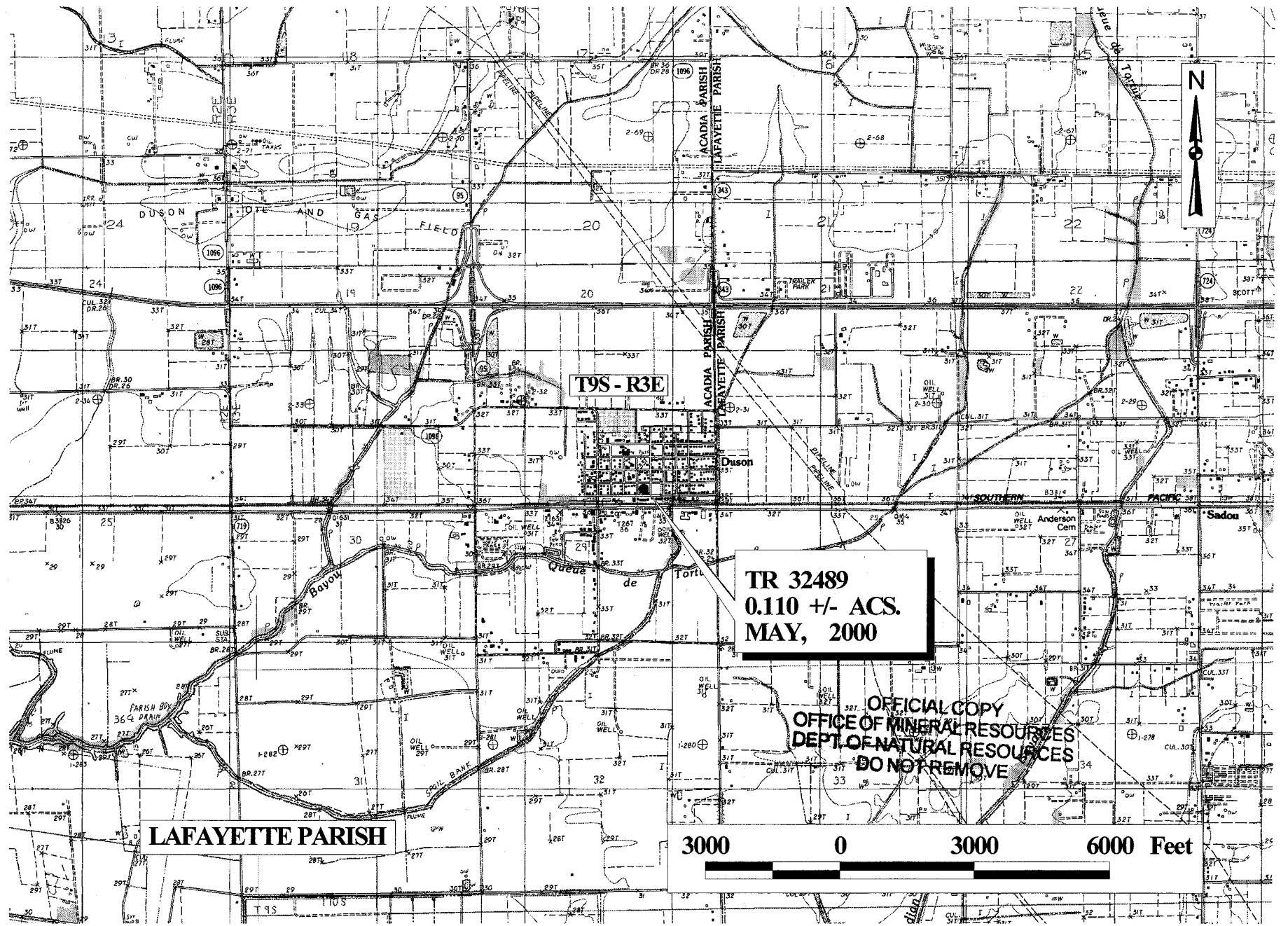
3000 0 3000 6000 Feet

**TRACT 32489 - Lafayette Parish, Louisiana**

All of the right, title and interest of the State of Louisiana in the mineral rights in and to the following described property, which is not under mineral lease from the State of Louisiana on May 10, 2000, situated in Lafayette Parish, Louisiana, and being more fully described as follows: A certain tract of land situated in the Northeast Quarter of Section 29, Township 9 South, Range 3 East, Lafayette Parish, Louisiana, situated within the corporate limits of the Town of Duson, Lafayette Parish, Louisiana, and being known and designated as Lot 2, Block 1 of the Plan of the Village of Duson on file in the Clerk's Office, Parish of Lafayette. Said lot having the dimensions of forty (40) feet by one hundred twenty (120) feet, being the same property adjudicated to the State of Louisiana for unpaid taxes for the year 1904 assessed in the name of J.C. Cowen per act recorded under Entry No. 32283 and further identified in that certain sheriff's deed of sale dated September 4, 1946, from the State of Louisiana to Richard Lagneaux recorded under Entry No. 194124 of the Records of Lafayette Parish, Louisiana, containing approximately 0.110 acres, as shown outlined in red on a plat on file in the Office of Mineral Resources, Department of Natural Resources.

Applicant: Louisiana Oil and Gas, Inc.

Bidder	Cash Payment	Price / Acre	Rental	Oil	Gas	Other



T9S - R3E

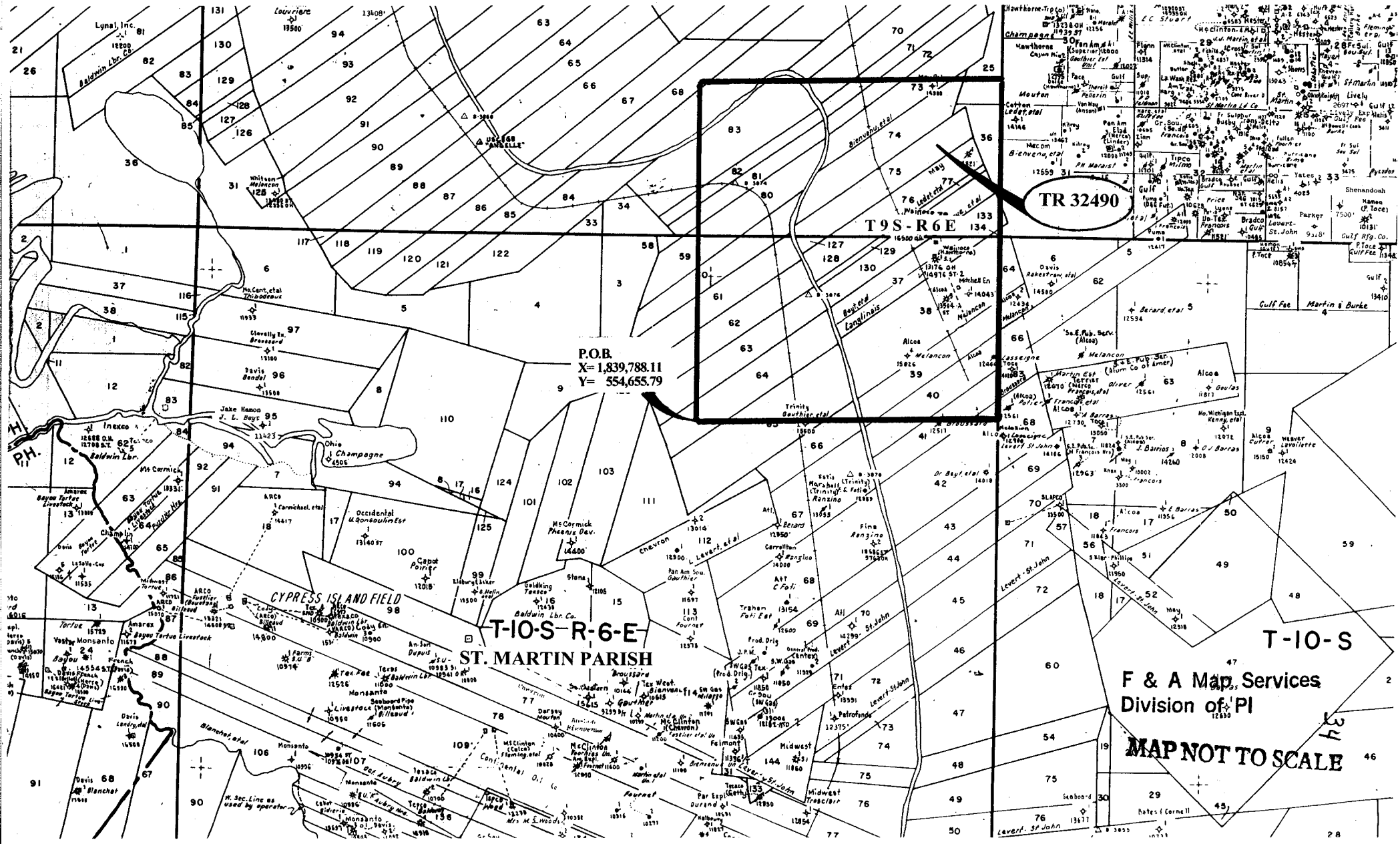
TR 32489  
0.110 +/- ACS.  
MAY, 2000

OFFICIAL COPY  
OFFICE OF MINERAL RESOURCES  
DEPT. OF NATURAL RESOURCES  
DO NOT REMOVE

LAFAYETTE PARISH

3000 0 3000 6000 Feet

NOT TO BE USED WITH A PORTION BID  
FOR INFORMATIONAL PURPOSES ONLY!

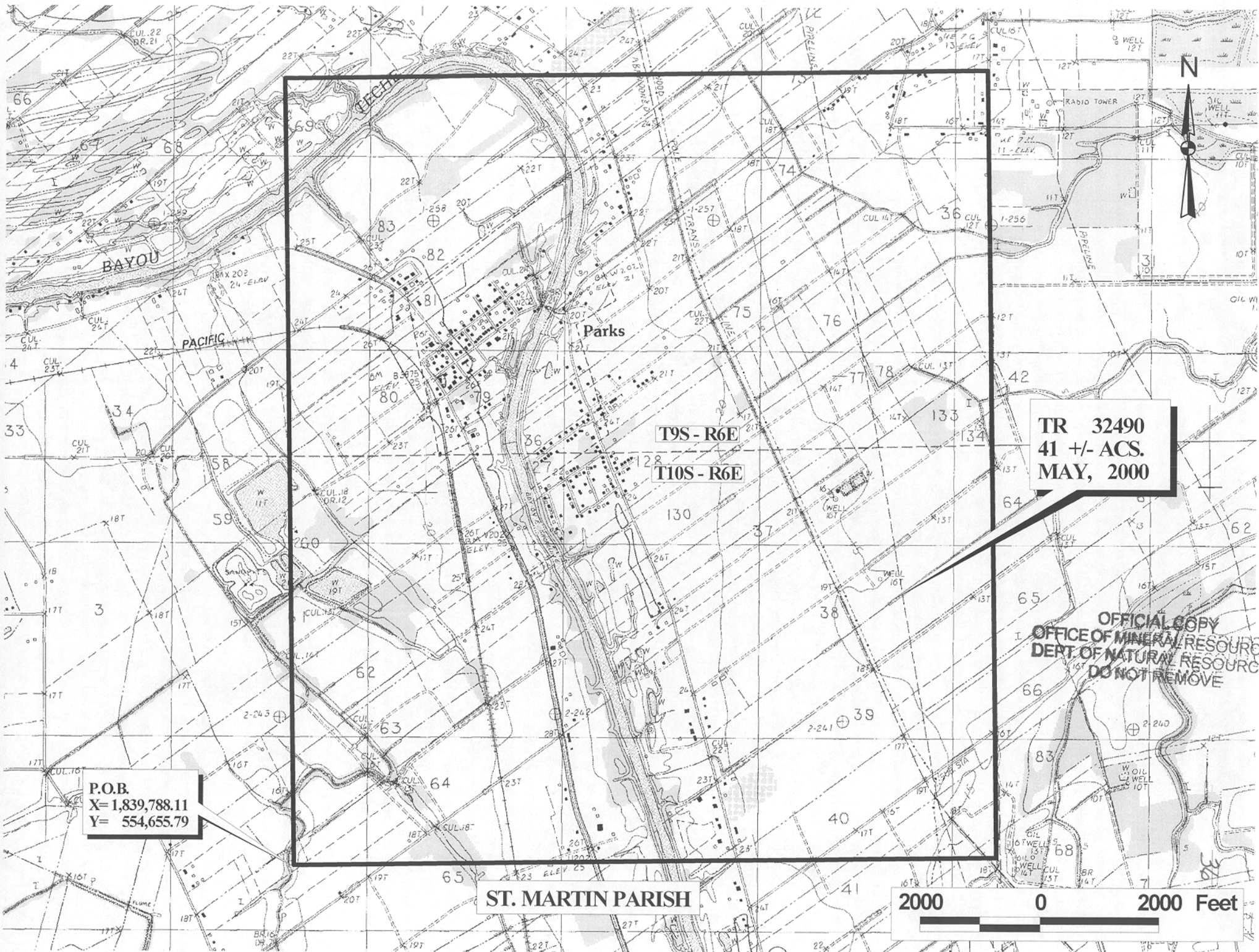


**TRACT 32490 - St. Martin Parish, Louisiana**

All of the lands now or formerly constituting the beds and bottoms of all water bodies of every nature and description and all islands and other lands formed by accretion or reliction, except tax lands, owned by and not under mineral lease from the State of Louisiana on May 10, 2000, situated in St. Martin Parish, Louisiana, within the following described boundaries: Beginning at a point having Coordinates of X = 1,839,788.11 and Y = 554,665.79; thence North 13,349.56 feet to a point having Coordinates of X = 1,839,788.11 and Y = 568,015.35; thence East 11,793.44 feet to a point having Coordinates of X = 1,851,581.55 and Y = 568,015.35; thence South 00 degrees 01 minutes 19 seconds East 13,349.51 feet to a point having Coordinates of X = 1,851,586.65 and Y = 554,665.84; thence South 89 degrees 59 minutes 59 seconds West 11,789.54 feet to the point of beginning, containing approximately **41 acres**, as shown outlined in red on a plat on file in the Office of Mineral Resources, Department of Natural Resources. All bearings, distances and coordinates are based on Louisiana Coordinate System of 1927 (South Zone).

Applicant: American Seismic Land Abstract, LLC

Bidder	Cash Payment	Price / Acre	Rental	Oil	Gas	Other



TR 32490  
41 +/- ACS.  
MAY, 2000

P.O.B.  
X= 1,839,788.11  
Y= 554,655.79

ST. MARTIN PARISH



OFFICIAL COPY  
OFFICE OF MINERAL RESOURCES  
DEPT. OF NATURAL RESOURCES  
DO NOT REMOVE