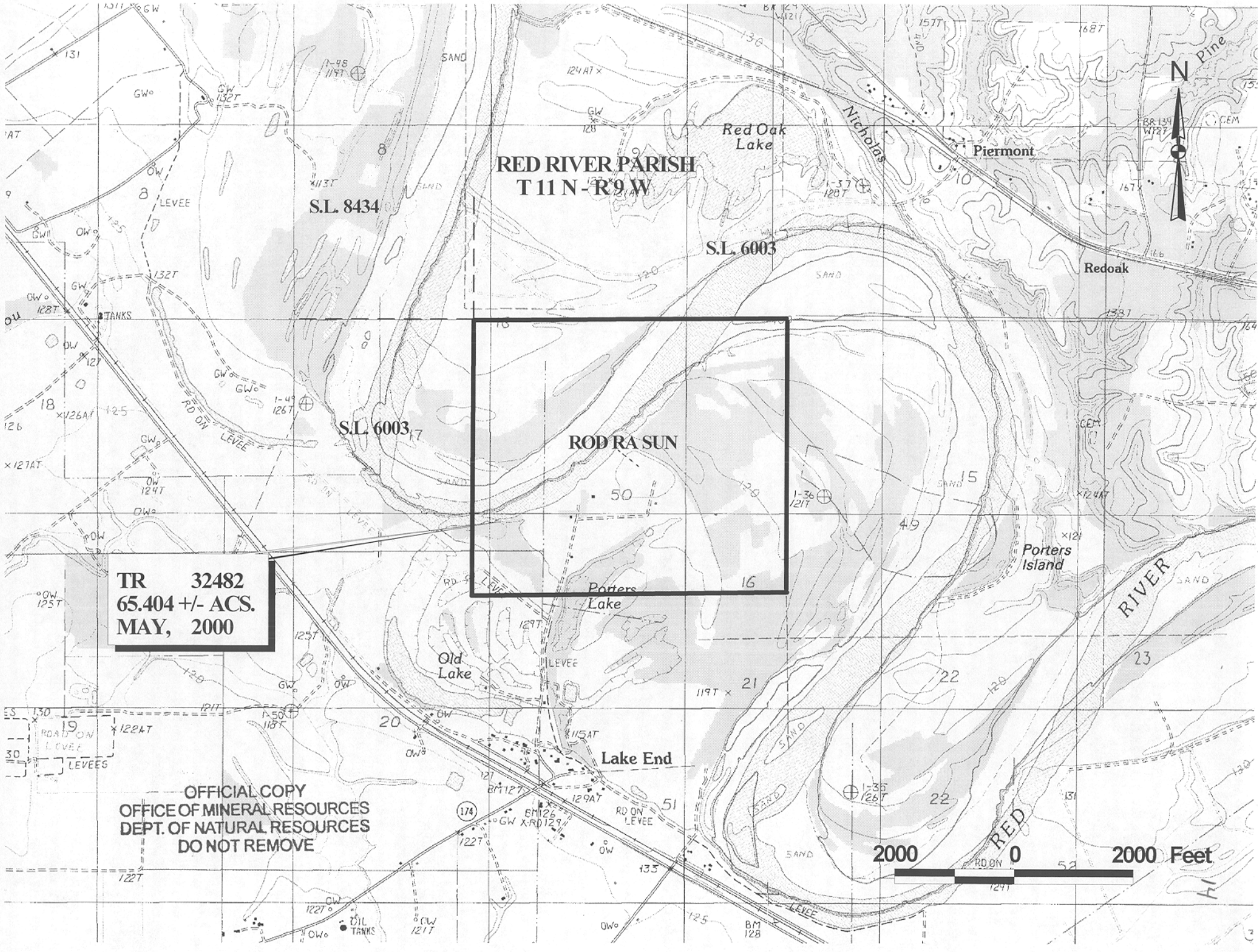


TRACT 32482 - Red River Parish, Louisiana

All of the lands now or formerly constituting the beds and bottoms of all water bodies of every nature and description and all islands and other lands formed by accretion or reliction, except tax lands, owned by and not under mineral lease from the State of Louisiana on May 10, 2000, situated in Red River Parish, Louisiana, within the following described boundaries: Those portions of Sections 9, 17, 20, 50 and 51, Township 11 North, Range 9 West, located within the geographical boundaries of the ROD RA SUN as established by Department of Conservation Order No. 948-A, recorded under Registry No. 127,876 of the Conveyance Records of Red River Parish, Louisiana, and effective February 1, 1975, **LESS AND EXCEPT**, if any, those portions of State Lease No. 6003, as amended, and State Lease No. 8434 that may lie within the above described tract, containing approximately **65.404 acres**, as shown outlined in red on a plat on file in the Office of Mineral Resources, Department of Natural Resources.

Applicant: Cypress Energy Corporation

Bidder	Cash Payment	Price / Acre	Rental	Oil	Gas	Other



RED RIVER PARISH
T 11 N - R 9 W

S.L. 8434

S.L. 6003

S.L. 6003.7

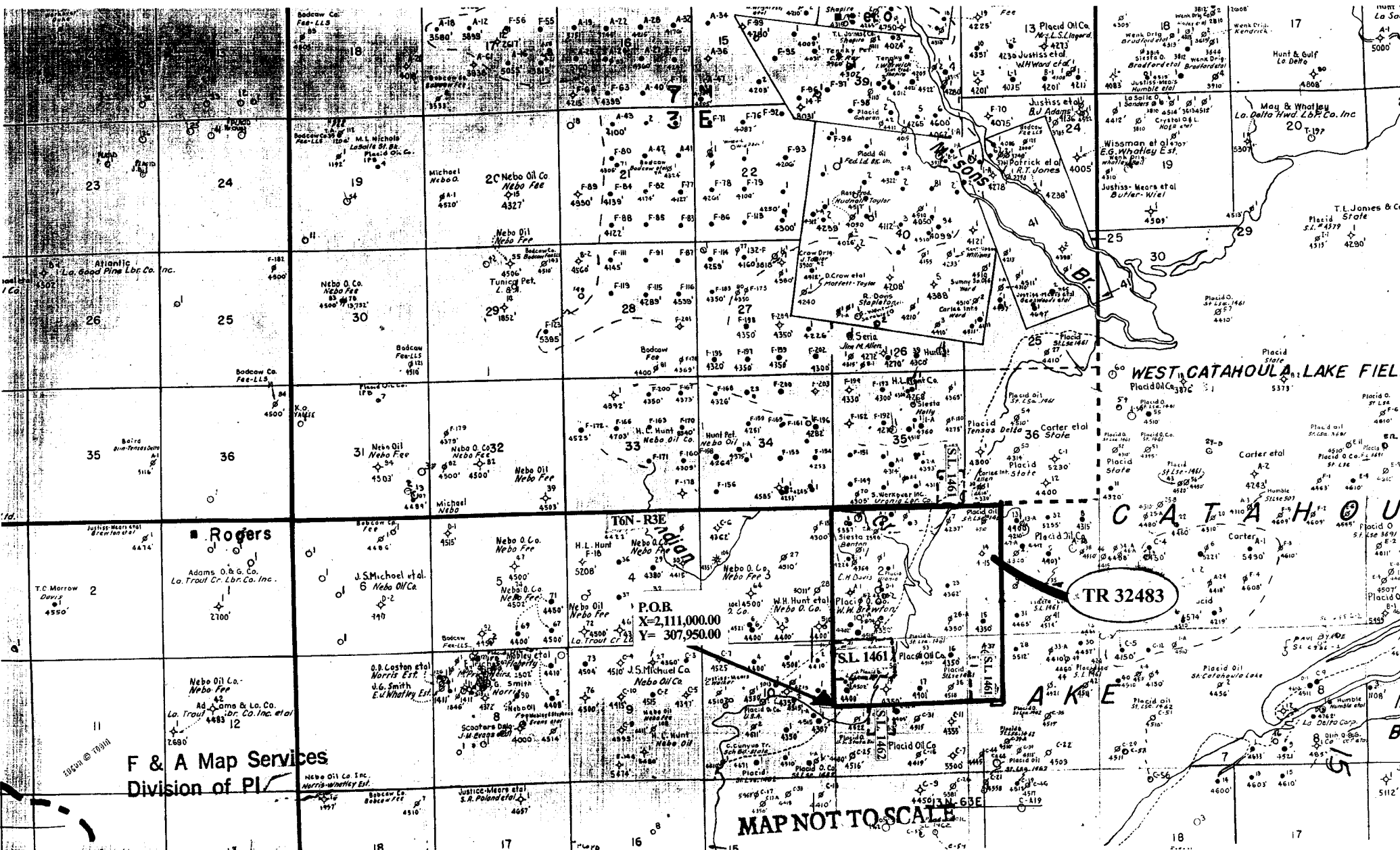
ROD RA SUN

TR 32482
65.404 +/- ACS.
MAY, 2000

OFFICIAL COPY
OFFICE OF MINERAL RESOURCES
DEPT. OF NATURAL RESOURCES
DO NOT REMOVE

2000 0 2000 Feet

NOT TO BE USED WITH A PORTION BID
FOR INFORMATIONAL PURPOSES ONLY!



TR 32483

P.O.B.
X=2,111,000.00
Y=307,950.00

MAP NOT TO SCALE

F & A Map Services
Division of PI

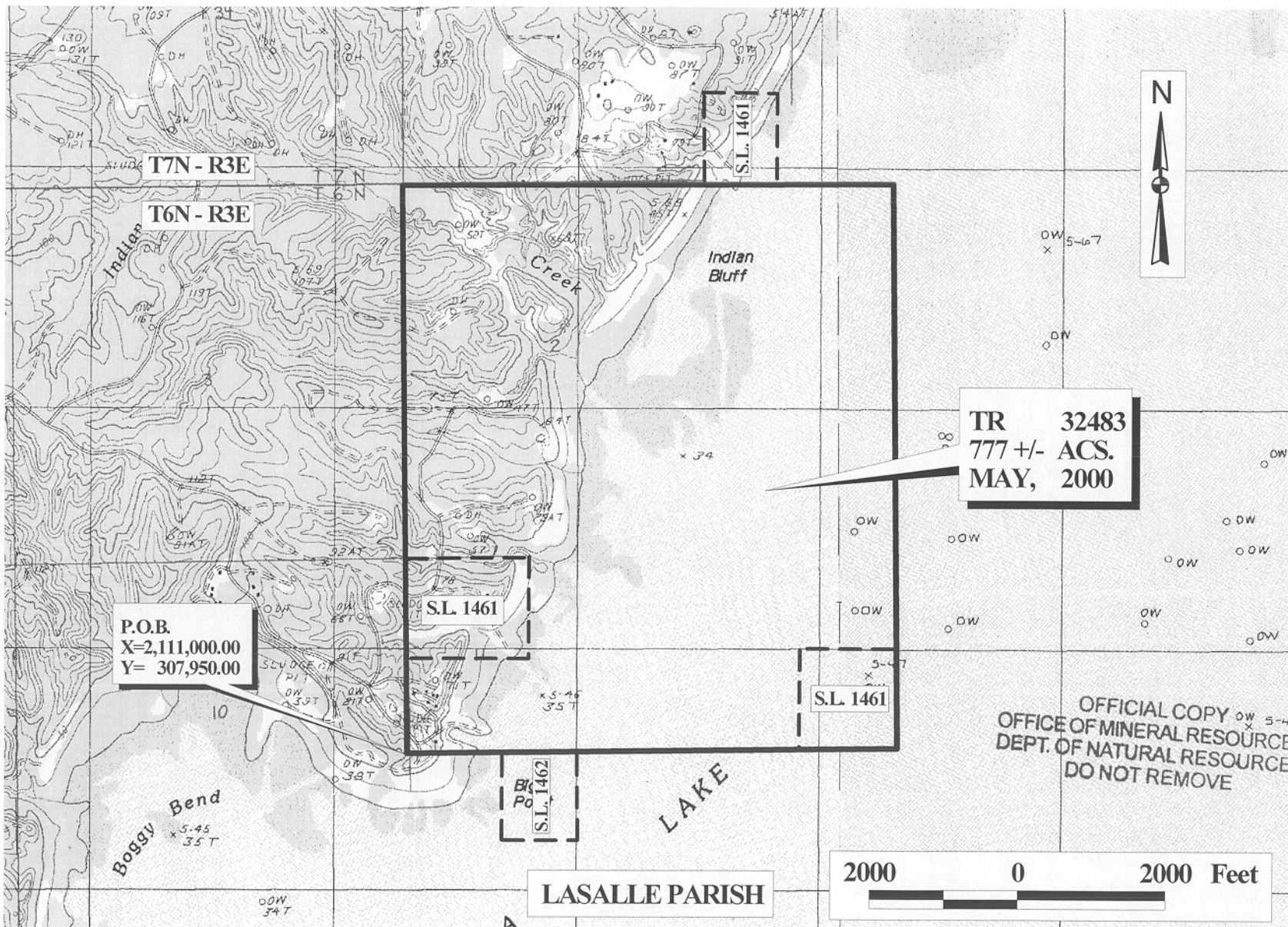
© 1988 F & A

TRACT 32483 - LaSalle Parish, Louisiana

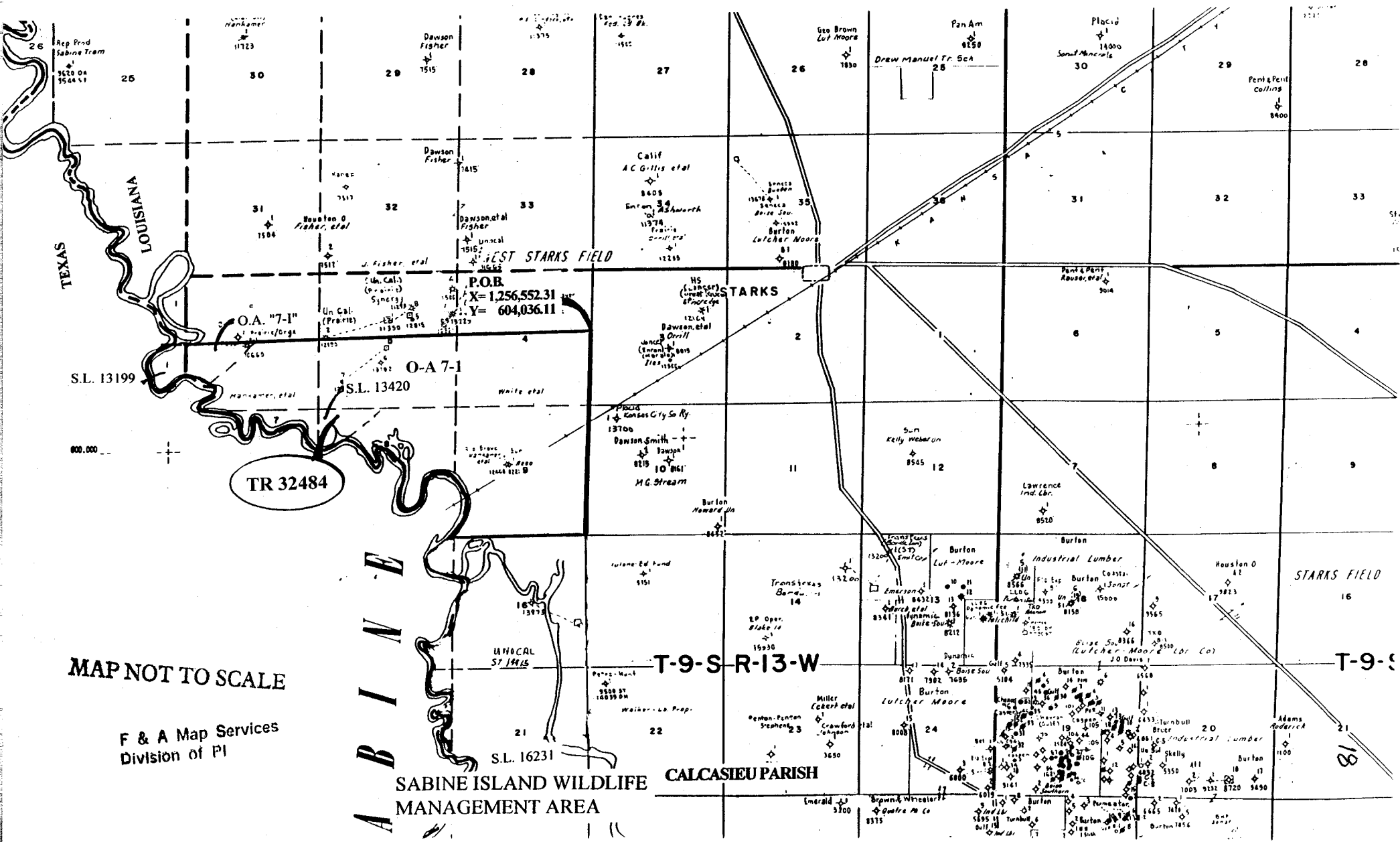
All of the lands now or formerly constituting the beds and bottoms of all water bodies of every nature and description and all islands and other lands formed by accretion or reliction, except tax lands, owned by and not under mineral lease from the State of Louisiana on May 10, 2000, situated in LaSalle Parish, Louisiana, within the following described boundaries: Beginning at a point having Coordinates of X = 2,111,000.00 and Y = 307,950.00; thence North 00 degrees 22 minutes 11 seconds West 7,750.10 feet to a point having Coordinates of X = 2,110,950.00 and Y = 315,700.00; thence East 6,630.00 feet to a point having Coordinates of X = 2,117,580.00 and Y = 315,750.00; thence South 00 degrees 22 minutes 19 seconds East 7,700.16 feet to a point having Coordinates of X = 2,117,630.00 and Y = 308,000.00; thence South 89 degrees 34 minutes 05 seconds West 6,630.19 feet to the point of beginning, **LESS AND EXCEPT** those portions of State Lease No. 1461, as amended, and State Lease No. 1462, as amended, that lie within the above described tract, containing approximately 777 acres, as shown outlined in red on a plat on file in the Office of Mineral Resources, Department of Natural Resources. All bearings, distances and coordinates are based on Louisiana Coordinate System of 1927 (South Zone).

Applicant: Buena Vista Corporation

Bidder	Cash Payment	Price / Acre	Rental	Oil	Gas	Other



NOT TO BE USED WITH A PORTION BID
FOR INFORMATIONAL PURPOSES ONLY!



MAP NOT TO SCALE

F & A Map Services
Division of PI

SABINE ISLAND WILDLIFE
MANAGEMENT AREA

CALCASIEU PARISH

T-9-S-R-13-W

TR 32484

STARKS FIELD

T-9-S

18