

TR 32516
2,443.27 +/- ACS.
MAY, 2000

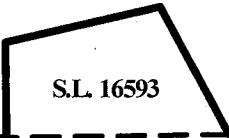


ST. BERNARD PARISH
PLAQUEMINES PARISH

BLK. 16

BLK. 14

BLK. 15



S.L. 16593

BLK. 17

BLK. 19

BLK. 18

P.O.B.
X=2,650,100.00
Y= 351,830.00

OFFICIAL COPY
OFFICE OF MINERAL RESOURCES
DEPT. OF NATURAL RESOURCES
DO NOT REMOVE

BRETON SOUND AREA



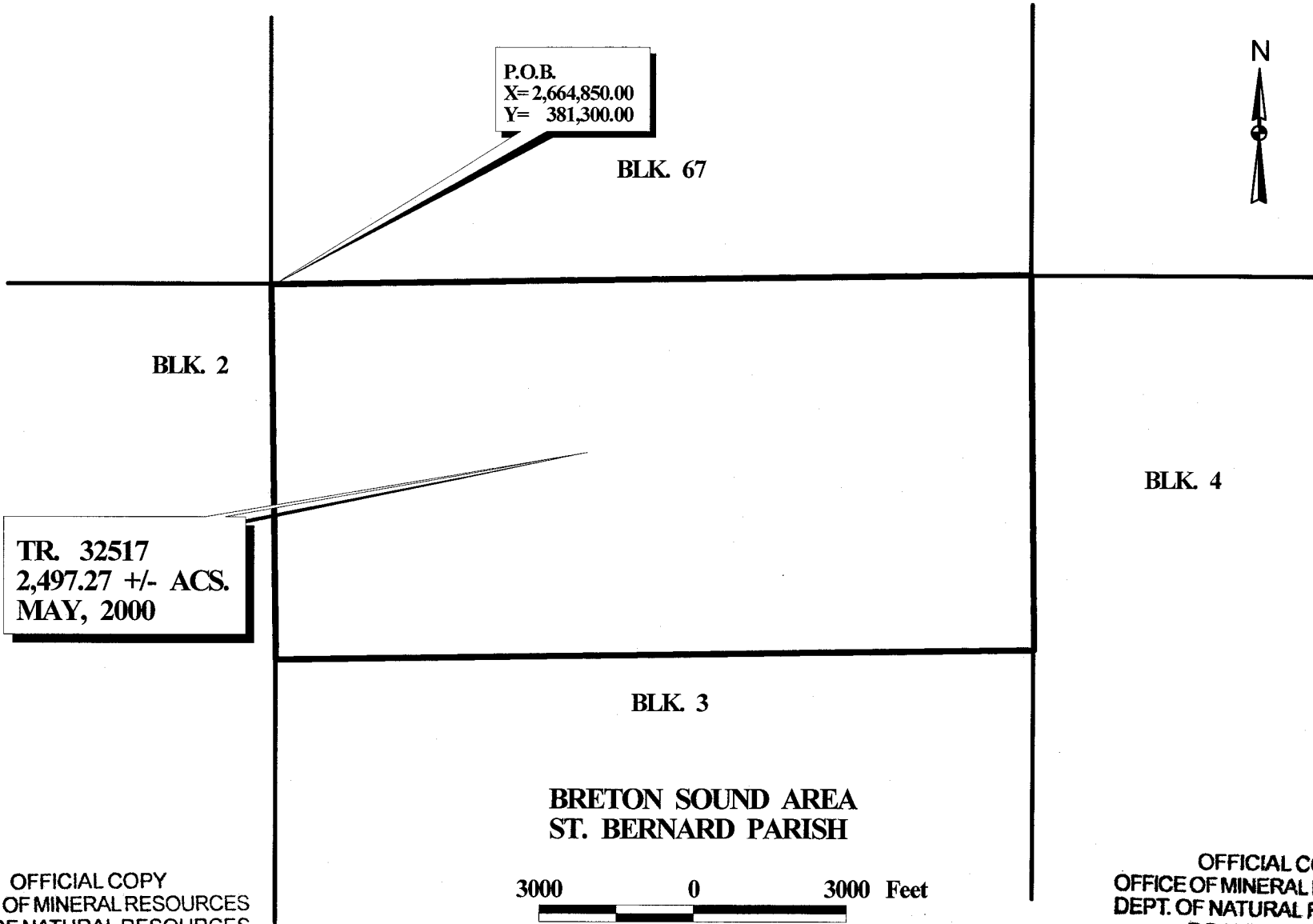
TRACT 32517 - PORTION OF BLOCK 3, BRETON SOUND AREA, St. Bernard Parish, Louisiana

All of the lands now or formerly constituting the beds and bottoms of all water bodies of every nature and description and all islands and other lands formed by accretion or reliction, except tax lands, belonging to the State of Louisiana and not under mineral lease on May 10, 2000, situated in St. Bernard Parish, Louisiana, and more particularly described as follows: Beginning at the Northwest corner of Block 3, Breton Sound Area, having Coordinates of X = 2,664,850.00 and Y = 381,330.00; thence East 14,750.00 feet on the North line of said Block 3 to its Northeast corner having Coordinates of X = 2,679,600.00 and Y = 381,330.00; thence South 7,375.00 feet on the East line of said Block 3 to a point having Coordinates of X = 2,679,600.00 and Y = 373,955.00; thence West 14,750.00 feet to a point on the West line of said Block 3 having Coordinates of X = 2,664,850.00 and Y = 373,955.00; thence North 7,375.00 feet on the West line of said Block 3 to the point of beginning, containing approximately 2,497.27 acres, as shown outlined in red on a plat on file in the State Land Office, Division of Administration. All bearings, distances and coordinates are based on Louisiana Coordinate System of 1927 (South Zone).

NOTE: The State of Louisiana does hereby reserve, and this lease shall be subject to, the imprescriptible right of surface use in the nature of a servitude in favor of the Department of Natural Resources, including its Offices and Commissions, for the sole purpose of implementing, constructing, servicing and maintaining approved coastal zone management and/or restoration projects. Utilization of any and all rights derived under this lease by the mineral lessee, its agents, successors or assigns, shall not interfere with nor hinder the reasonable surface use by the Department of Natural Resources, its Offices or Commissions, as hereinabove reserved.

Applicant: Robert A. Schroder, Inc.

Bidder	Cash Payment	Price / Acre	Rental	Oil	Gas	Other



P.O.B.
X= 2,664,850.00
Y= 381,300.00

BLK. 67



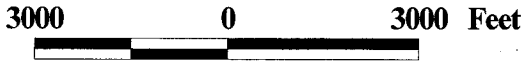
BLK. 2

TR. 32517
2,497.27 +/- ACS.
MAY, 2000

BLK. 4

BLK. 3

BRETON SOUND AREA
ST. BERNARD PARISH



OFFICIAL COPY
OFFICE OF MINERAL RESOURCES
DEPT. OF NATURAL RESOURCES
DO NOT REMOVE

OFFICIAL COPY
OFFICE OF MINERAL RESOURCES
DEPT. OF NATURAL RESOURCES
DO NOT REMOVE

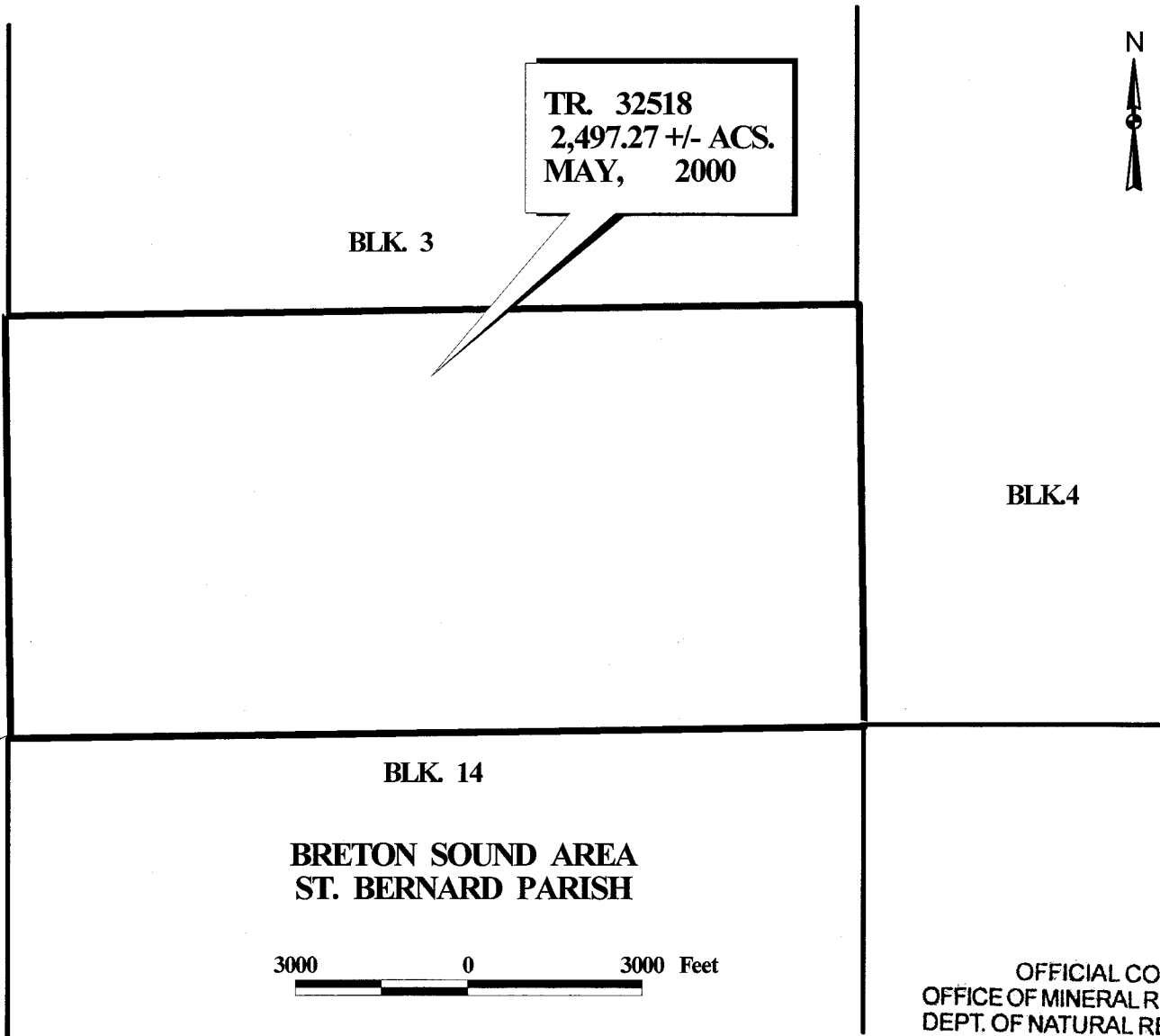
TRACT 32518 - PORTION OF BLOCK 3, BRETON SOUND AREA, St. Bernard Parish, Louisiana

All of the lands now or formerly constituting the beds and bottoms of all water bodies of every nature and description and all islands and other lands formed by accretion or reliction, except tax lands, belonging to the State of Louisiana and not under mineral lease on May 10, 2000, situated in St. Bernard Parish, Louisiana, and more particularly described as follows: Beginning at the Southwest corner of Block 3, Breton Sound Area, having Coordinates of X = 2,664,850.00 and Y = 366,580.00; thence North 7,375.00 feet on the West line of said Block 3 to a point having Coordinates of X = 2,664,850.00 and Y= 373,955.00; thence East 14,750.00 feet to a point on the East Line of said Block 3 having Coordinates of X = 2,679,600.00 and Y = 373,955.00; thence South 7,375.00 feet on the East line of said Block 3 to its Southeast Corner having coordinates of X = 2,679,600.00 and Y = 366,580.00; thence West 14,750.00 feet on the South line of said Block 3 to the point of beginning, containing approximately 2,497.27 acres, as shown outlined in red on a plat on file in the State Land Office, Division of Administration. All bearings, distances and coordinates are based on Louisiana Coordinate System of 1927 (South Zone).

NOTE: The State of Louisiana does hereby reserve, and this lease shall be subject to, the imprescriptible right of surface use in the nature of a servitude in favor of the Department of Natural Resources, including its Offices and Commissions, for the sole purpose of implementing, constructing, servicing and maintaining approved coastal zone management and/or restoration projects. Utilization of any and all rights derived under this lease by the mineral lessee, its agents, successors or assigns, shall not interfere with nor hinder the reasonable surface use by the Department of Natural Resources, its Offices or Commissions, as hereinabove reserved.

Applicant: Robert A. Schroeder, Inc.

Bidder	Cash Payment	Price / Acre	Rental	Oil	Gas	Other



TR. 32518
2,497.27 +/- ACS.
MAY, 2000

BLK. 3

BLK. 2

BLK.4

BLK. 14

BRETON SOUND AREA
ST. BERNARD PARISH

P.O.B.
X= 2,664,850.00
Y= 366,580.00

3000 0 3000 Feet

OFFICIAL COPY
OFFICE OF MINERAL RESOURCES
DEPT. OF NATURAL RESOURCES
DO NOT REMOVE

TRACT 32519 - PORTION OF BLOCK 14, BRETON SOUND AREA, St. Bernard Parish, Louisiana

All of the lands now or formerly constituting the beds and bottoms of all water bodies of every nature and description and all islands and other lands formed by accretion or reliction, except tax lands, belonging to the State of Louisiana and not under mineral lease on May 10, 2000, situated in St. Bernard Parish, Louisiana, and more particularly described as follows: Beginning at the Northeast corner of Block 14, Breton Sound Area, having Coordinates of X = 2,679,600.00 and Y = 366,580.00; thence South 7,375.00 feet along the East line of said Block 14 to a point having Coordinates of X = 2,679,600.00 and Y = 359,205.00; thence West 14,750.00 feet to a point on the West line of said Block 14 having Coordinates of X = 2,664,850.00 and Y = 359,205.00; thence North 7,375.00 feet along the West line of said Block 14 to its Northwest corner having Coordinates of X = 2,664,850.00 and Y = 366,580.00; thence East 14,750.00 feet along the North line of said Block 14 to the point of beginning, containing approximately 2,497.27 acres, as shown outlined in red on a plat on file in the Office of Mineral Resources, Department of Natural Resources. All bearings, distances and coordinates are based on Louisiana Coordinate System of 1927 (South Zone).

NOTE: The State of Louisiana does hereby reserve, and this lease shall be subject to, the imprescriptible right of surface use in the nature of a servitude in favor of the Department of Natural Resources, including its Offices and Commissions, for the sole purpose of implementing, constructing, servicing and maintaining approved coastal zone management and/or restoration projects. Utilization of any and all rights derived under this lease by the mineral lessee, its agents, successors or assigns, shall not interfere with nor hinder the reasonable surface use by the Department of Natural Resources, its Offices or Commissions, as hereinabove reserved.

Applicant: Robert A. Schroeder, Inc.

Bidder	Cash Payment	Price / Acre	Rental	Oil	Gas	Other