

ST. BERNARD PARISH

OFFICIAL COPY
 OFFICE OF MINERAL RESOURCES
 DEPT. OF NATURAL RESOURCES
 DO NOT REMOVE

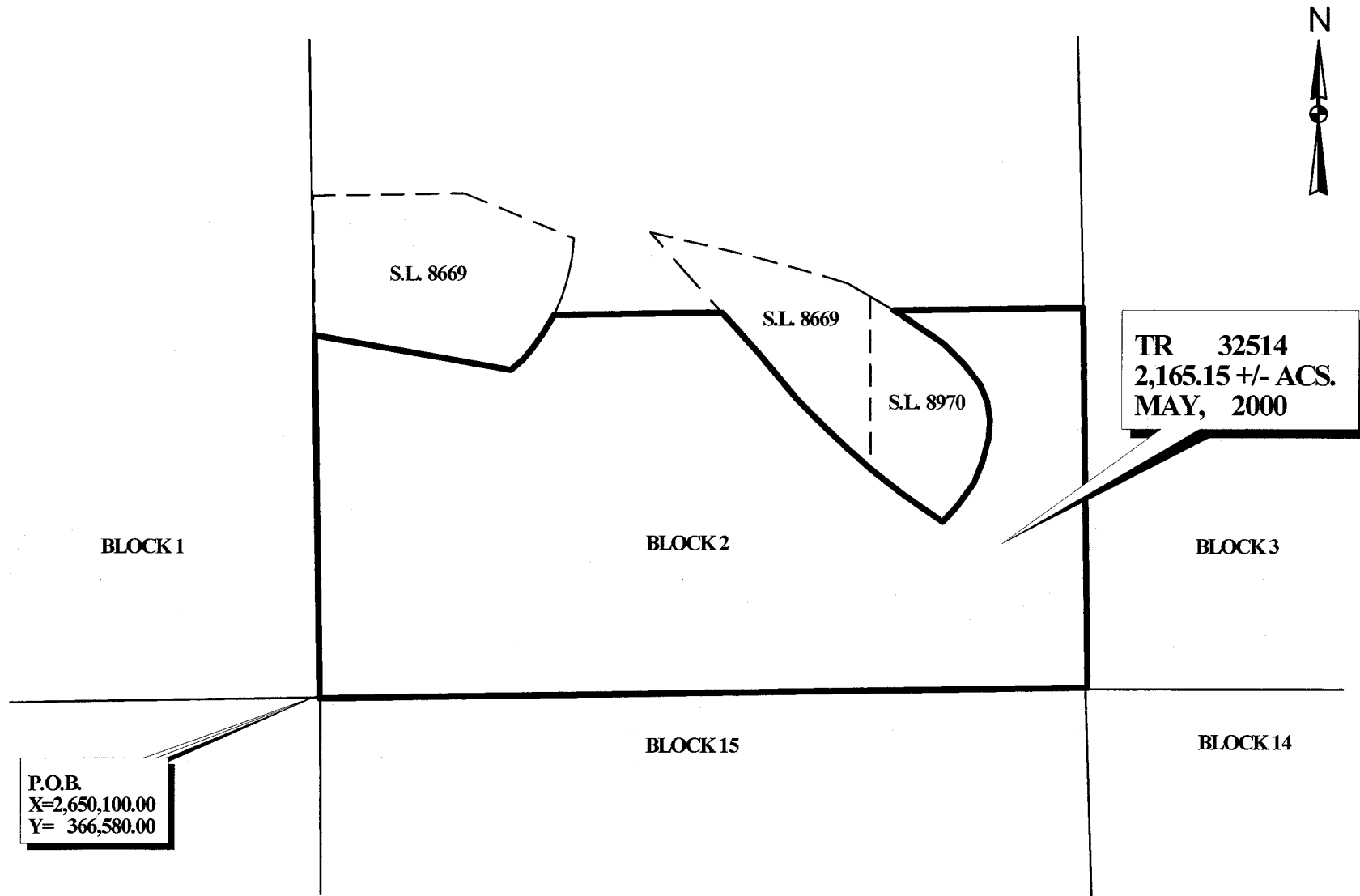
TRACT 32514 - PORTION OF BLOCK 2, BRETON SOUND AREA, St. Bernard Parish, Louisiana

All of the lands now or formerly constituting the beds and bottoms of all water bodies of every nature and description and all islands and other lands formed by accretion or reliction, except tax lands, belonging to the State of Louisiana and not under mineral lease on May 10, 2000, situated in St. Bernard Parish, Louisiana, and more particularly described as follows: Beginning at the Southwest corner of Block 2, Breton Sound Area, having Coordinates of X = 2,650,100.00 and Y = 366,580.00; thence North 7,051.48 feet on the west line of said Block 2 to a point on the Southern boundary of the most Westerly portion of State Lease No. 8669 having Coordinates of X = 2,650,100.00 and Y = 373,631.48; thence on the boundary of said Western portion of said State Lease No. 8669 the following courses: Southeasterly and Northeasterly to a point having Coordinates of X = 2,654,679.14 and Y = 373,955.00; thence East 3,232.10 feet to a point on the Southern boundary of the Eastern portion of said State Lease No. 8669 having Coordinates of X = 2,657,911.24 and Y = 373,955.00; thence Southeasterly on the Southern boundary of said Eastern portion of said State Lease No. 8669 to its most Southern point, also being the Southwest corner of State Lease No. 8970, as amended, having Coordinates of X = 2,660,745.47 and Y = 370,877.82; thence on the boundaries of said State Lease No. 8970 the following courses: Southeasterly, Northeasterly, Northerly and Northwesterly to a point having Coordinates of X = 2,661,218.08 and Y = 373,955.00; thence East 3,631.93 feet to a point on the East line of said Block 2 having Coordinates of X = 2,664,850.00 and Y = 373,955.00; thence South 7,375.00 feet on the East line of said Block 2 to its Southeast corner having Coordinates of X = 2,664,850.00 and Y = 366,580.00; thence West 14,750.00 feet on the South line of said Block 2 to the point of beginning, containing approximately **2,165.15 acres**, as shown outlined in red on a plat on file in the Office of Mineral Resources, Department of Natural Resources. All bearings, distances and coordinates are based on Louisiana Coordinate System of 1927 (South Zone).

NOTE: The State of Louisiana does hereby reserve, and this lease shall be subject to, the imprescriptible right of surface use in the nature of a servitude in favor of the Department of Natural Resources, including its Offices and Commissions, for the sole purpose of implementing, constructing, servicing and maintaining approved coastal zone management and/or restoration projects. Utilization of any and all rights derived under this lease by the mineral lessee, its agents, successors or assigns, shall not interfere with nor hinder the reasonable surface use by the Department of Natural Resources, its Offices or Commissions, as hereinabove reserved.

Applicant: Robert A. Schroeder, Inc.

Bidder	Cash Payment	Price / Acre	Rental	Oil	Gas	Other



**BRETON SOUND AREA
ST. BERNARD PARISH**

OFFICIAL COPY
OFFICE OF MINERAL RESOURCES
DEPT. OF NATURAL RESOURCES
DO NOT REMOVE

3000 0 3000 Feet

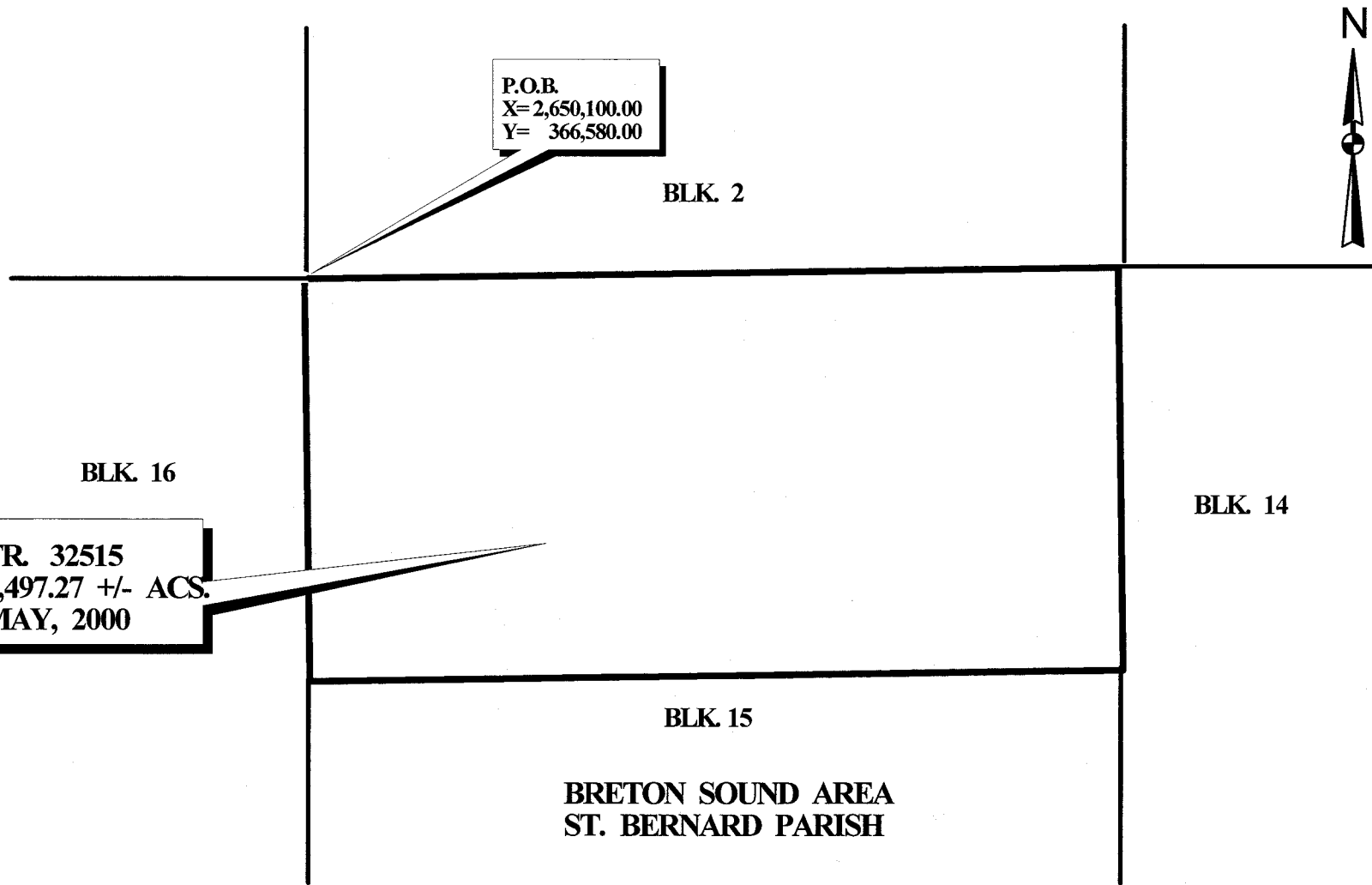
TRACT 32515 - PORTION OF BLOCK 15, BRETON SOUND AREA, St. Bernard Parish, Louisiana

All of the lands now or formerly constituting the beds and bottoms of all water bodies of every nature and description and all islands and other lands formed by accretion or reliction, except tax lands, belonging to the State of Louisiana and not under mineral lease on May 10, 2000, situated in St. Bernard Parish, Louisiana, and more particularly described as follows: Beginning at the Northwest corner of Block 15, Breton Sound Area, having Coordinates of X = 2,650,100.00 and Y = 366,580.00; thence East 14,750.00 feet on the North line of said Block 15 to its Northeast corner; thence South 7,375.00 feet on the East line of said Block 15 to a point; thence West 14,750.00 feet to a point on the West line of said Block 15; thence North 7,375.00 feet on said West line of said Block 15 to the point of beginning, containing approximately 2,497.27 acres, as shown outlined in red on a plat on file in the State Land Office, Division of Administration. All bearings, distances and coordinates are based on Louisiana Coordinate System of 1927 (South Zone).

NOTE: The State of Louisiana does hereby reserve, and this lease shall be subject to, the imprescriptible right of surface use in the nature of a servitude in favor of the Department of Natural Resources, including its Offices and Commissions, for the sole purpose of implementing, constructing, servicing and maintaining approved coastal zone management and/or restoration projects. Utilization of any and all rights derived under this lease by the mineral lessee, its agents, successors or assigns, shall not interfere with nor hinder the reasonable surface use by the Department of Natural Resources, its Offices or Commissions, as hereinabove reserved.

Applicant: Robert A. Schroeder, Inc.

Bidder	Cash Payment	Price / Acre	Rental	Oil	Gas	Other



P.O.B.
X=2,650,100.00
Y= 366,580.00

BLK. 2



BLK. 16

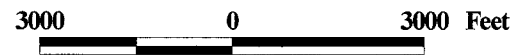
BLK. 14

TR. 32515
2,497.27 +/- ACS.
MAY, 2000

BLK. 15

BRETON SOUND AREA
ST. BERNARD PARISH

OFFICIAL COPY
OFFICE OF MINERAL RESOURCES
DEPT. OF NATURAL RESOURCES
DO NOT REMOVE



TRACT 32516 - PORTION OF BLOCK 15, BRETON SOUND AREA, Plaquemines and St. Bernard Parishes, Louisiana

All of the lands now or formerly constituting the beds and bottoms of all water bodies of every nature and description and all islands and other lands formed by accretion or reliction, except tax lands, belonging to the State of Louisiana and not under mineral lease on May 10, 2000, situated in Plaquemines and St. Bernard Parishes, Louisiana, and more particularly described as follows: Beginning at the Southwest corner of Block 15, Breton Sound Area, having Coordinates of X = 2,650,100.00 and Y = 351,830.00; thence North 7,375.00 feet on the West line of said Block 15 to a point having Coordinates of X = 2,650,100.00 and Y = 359,205.00; thence East 14,750.00 feet to a point on the East line of said Block 15 having Coordinates of X = 2,664,850.00 and Y = 359,205.00; thence South 7,375.00 feet on the East line of said Block 15 to its Southeast corner having Coordinates of X = 2,664,850.00 and Y = 351,830.00; thence West 10,250.00 feet on the South line of said Block 15 to the Southeast corner of State Lease No. 16593 having Coordinates of X = 2,654,600.00 and Y = 351,830.00; thence on the boundaries of said State Lease No. 16593 the following courses: North 27 degrees 24 minutes 27 seconds West 1,520.69 feet, South 77 degrees 39 minutes 39 seconds West 1,637.83 feet and South 1,000.00 feet to its Southwest corner, also being a point on the South line of said Block 15 having Coordinates of X = 2,652,300.00 and Y = 351,830.00; thence West 2,200.00 feet on the South line of said Block 15 to the point of beginning, containing approximately 2,443.27 acres, as shown outlined in red on a plat on file in the Office of Mineral Resources, Department of Natural Resources. All bearings, distances and coordinates are based on Louisiana Coordinate System of 1927 (South Zone).

NOTE: The State of Louisiana does hereby reserve, and this lease shall be subject to, the imprescriptible right of surface use in the nature of a servitude in favor of the Department of Natural Resources, including its Offices and Commissions, for the sole purpose of implementing, constructing, servicing and maintaining approved coastal zone management and/or restoration projects. Utilization of any and all rights derived under this lease by the mineral lessee, its agents, successors or assigns, shall not interfere with nor hinder the reasonable surface use by the Department of Natural Resources, its Offices or Commissions, as hereinabove reserved.

Applicant: Robert A. Schroeder, Inc.

Bidder	Cash Payment	Price / Acre	Rental	Oil	Gas	Other