

TRACT 32508 - PORTION OF BLOCK 9, MAIN PASS AREA, REVISED, Plaquemines and St. Bernard Parishes, Louisiana

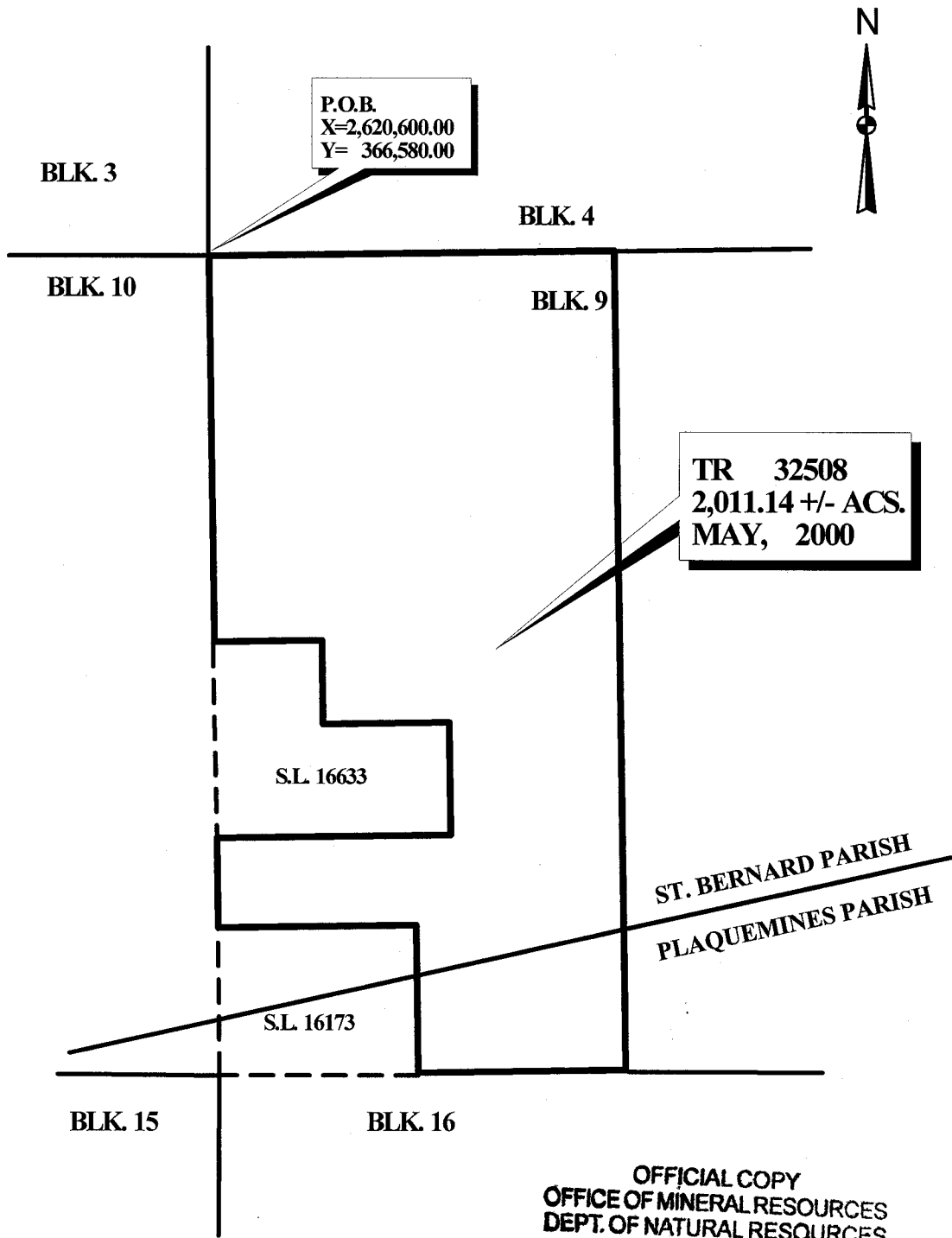
All of the lands now or formerly constituting the beds and bottoms of all water bodies of every nature and description and all islands and other lands formed by accretion or reliction, except tax lands, belonging to the State of Louisiana and not under mineral lease on May 10, 2000, situated in Plaquemines and St. Bernard Parishes, Louisiana, and more particularly described as follows: Beginning at the Northwest corner of Block 9, Main Pass Area, Revised, having Coordinates of X = 2,620,600.00 and Y = 366,580.00; thence East 7,375.00 feet on the North line of said Block 9 to a point having Coordinates of X = 2,627,975.00 and Y = 366,580.00; thence South 14,750.00 feet to a point on the South line of said Block 9 having Coordinates of X = 2,627,975.00 and Y = 351,830.00; thence West 3,775.00 feet on the South line of said Block 9 to the Southeast corner of State Lease No. 16173 having Coordinates of X = 2,624,200.00 and Y = 351,830.00; thence North 2,650.00 feet on the East line of said State Lease No. 16173 to its Northeast corner having Coordinates of X = 2,624,200.00 and Y = 354,480.00; thence West 3,600.00 feet on the North line of said State Lease No. 16173 to its Northwest corner having Coordinates of X = 2,620,600.00 and Y = 354,480.00; also being a point on the West line of said Block 9; thence North 1,611.13 feet on the west line of said Block 9 to the Southwest corner of State Lease No. 16633 having Coordinates of X = 2,620,600.00 and Y = 356,091.13; thence on the boundaries of said State Lease No. 16633 the following courses: East 4,249.36 feet, North 2,050.00 feet, West 2,299.36 feet, North 1,500.00 feet and West 1,950.00 feet to a point on the West line of said Block 9 having Coordinates of X = 2,620,600.00 and Y = 359,641.13; thence North 6,938.87 feet on the West line of said Block 9 to the point of beginning, containing approximately 2,011.14 acres, as shown outlined in red on a plat on file in the Office of Mineral Resources, Department of Natural Resources. All bearings, distances and coordinates are based on Louisiana Coordinate System of 1927 (South Zone).

NOTE: It appears, according to our records, that a portion of this tract is located within the restrictive safety fairway area as set out by the Corps of Engineers, U.S. Army.

NOTE: The State of Louisiana does hereby reserve, and this lease shall be subject to, the imprescriptible right of surface use in the nature of a servitude in favor of the Department of Natural Resources, including its Offices and Commissions, for the sole purpose of implementing, constructing, servicing and maintaining approved coastal zone management and/or restoration projects. Utilization of any and all rights derived under this lease by the mineral lessee, its agents, successors or assigns, shall not interfere with nor hinder the reasonable surface use by the Department of Natural Resources, its Offices or Commissions, as hereinabove reserved.

Applicant: Robert A. Schroeder, Inc.

Bidder	Cash Payment	Price / Acre	Rental	Oil	Gas	Other



MAIN PASS AREA, REVISED

OFFICIAL COPY
 OFFICE OF MINERAL RESOURCES
 DEPT. OF NATURAL RESOURCES
 DO NOT REMOVE

3000 0 3000 Feet

TRACT 32509 - PORTION OF BLOCK 9, MAIN PASS AREA, REVISED, Plaquemines and St. Bernard Parishes, Louisiana

All of the lands now or formerly constituting the beds and bottoms of all water bodies of every nature and description and all islands and other lands formed by accretion or reliction, except tax lands, belonging to the State of Louisiana and not under mineral lease on May 10, 2000, situated in Plaquemines and St. Bernard Parishes, Louisiana, and more particularly described as follows: Beginning at the Northeast corner of Block 9, Main Pass Area, Revised, having Coordinates of X = 2,635,350.00 and Y = 366,580.00; thence South 14,750.00 feet along the East line of said Block 9 to its Southeast corner having Coordinates of X = 2,635,350.00 and Y = 351,830.00; thence West 7,375.00 feet to a point on the South line of said Block 9 having Coordinates of X = 2,627,975.00 and Y = 351,830.00; thence North 14,750.00 feet to a point on the North line of said Block 9 having Coordinates of X = 2,627,975.00 and Y = 366,580.00; thence East 7,375.00 feet along said North line to the point of beginning, containing approximately 2,497.27 acres, as shown outlined in red on a plat on file in the Office of Mineral Resources, Department of Natural Resources. All bearings, distances and coordinates are based on Louisiana Coordinate System of 1927 (South Zone).

NOTE: It appears, according to our records, that a portion of this tract is located within the restrictive safety fairway area as set out by the Corps of Engineers, U.S. Army.

NOTE: The State of Louisiana does hereby reserve, and this lease shall be subject to, the imprescriptible right of surface use in the nature of a servitude in favor of the Department of Natural Resources, including its Offices and Commissions, for the sole purpose of implementing, constructing, servicing and maintaining approved coastal zone management and/or restoration projects. Utilization of any and all rights derived under this lease by the mineral lessee, its agents, successors or assigns, shall not interfere with nor hinder the reasonable surface use by the Department of Natural Resources, its Offices or Commissions, as hereinabove reserved.

Applicant: Robert A. Schroeder, Inc.

Bidder	Cash Payment	Price / Acre	Rental	Oil	Gas	Other



BLOCK 4

BLOCK 1

P.O.B.
X=2,635,350.00
Y= 366,580.00

TR 32509
2,497.27 +/- ACS.
MAY, 2000

BLOCK 9

BLOCK 16

ST. BERNARD PARISH

PLAQUEMINES PARISH

OFFICIAL COPY
OFFICE OF MINERAL RESOURCES
DEPT. OF NATURAL RESOURCES
DO NOT REMOVE

BLOCK 16

BLOCK 17

3000 0 3000 Feet



MAIN PASS AREA, REV.

BRETON SOUND AREA