

FORTUNA

P.O.B.
X=2,591,100.00
Y= 373,955.00



Frenepiquant

BLK. 2

Fiddler Point

S.L. 15754

St. Helena Bay

S.L. 15483

TR 32499
807 +/- ACS.
MAY, 2000

S.L. 14564

BLK. 1

BLK. 3

15

S.L. 16630

BLK. 10

BLK. 12

Pass Fernandez

BLK. 11

OFFICIAL COPY
OFFICE OF MINERAL RESOURCES
DEPT. OF NATURAL RESOURCES
DO NOT REMOVE

MAIN PASS AREA, REVISED
ST. BERNARD PARISH

2000 0 2000 Feet

Point Gardner

19

TRACT 32500 - PORTION OF BLOCK 11, MAIN PASS AREA, REVISED, St. Bernard Parish, Louisiana

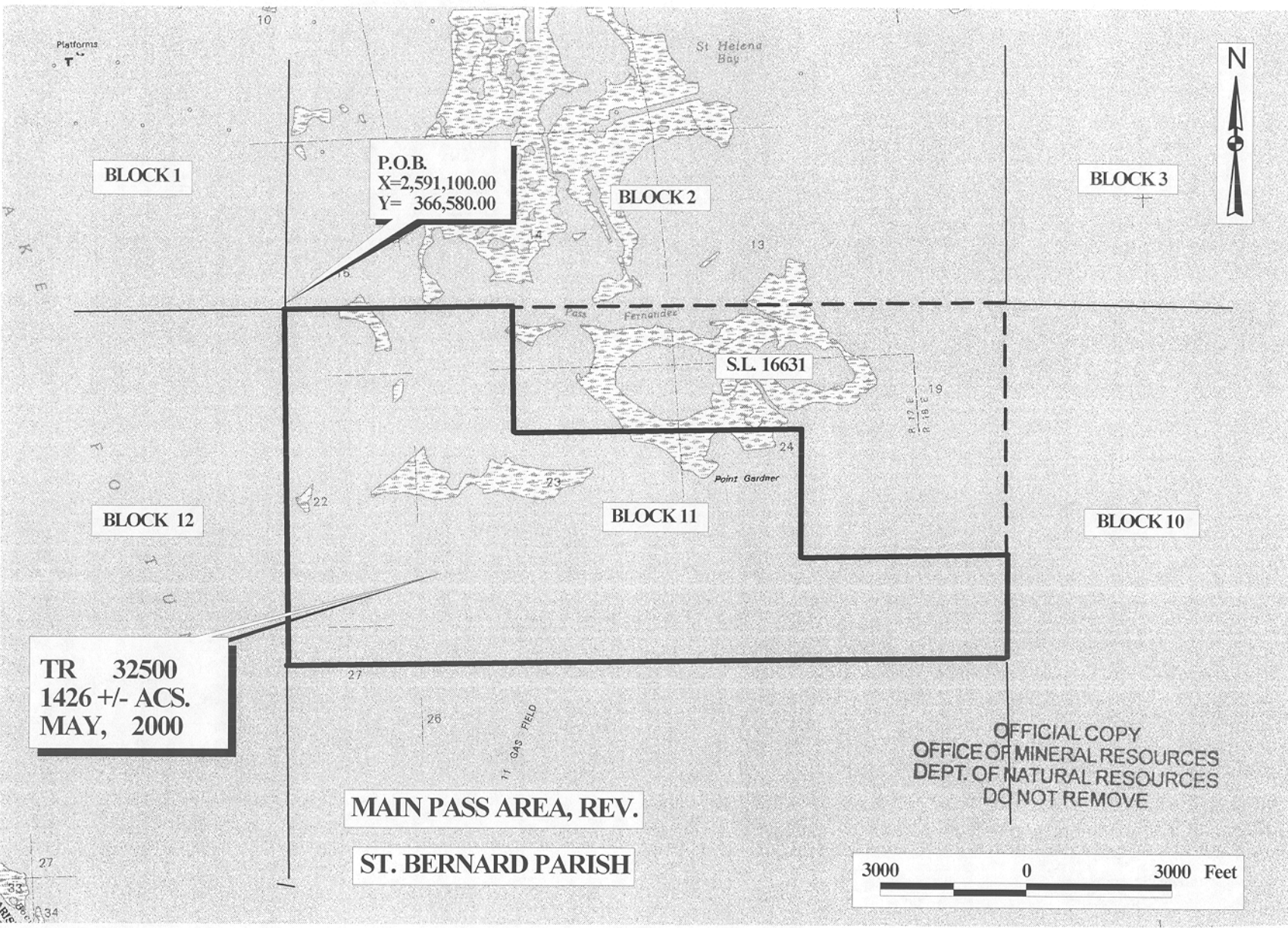
All of the lands now or formerly constituting the beds and bottoms of all water bodies of every nature and description and all islands and other lands formed by accretion or reliction, except tax lands, belonging to the State of Louisiana and not under mineral lease on May 10, 2000, situated in St. Bernard Parish, Louisiana, and more particularly described as follows: Beginning at the Northwest corner of Block 11, Main Pass Area, Revised, having Coordinates of X = 2,591,100.00 and Y = 366,580.00; thence East 4,675.00 feet on the North line of said Block 11 to the most Northerly Northwest corner of State Lease No. 16631 having Coordinates of X = 2,595,775.00 and Y = 366,580.00; thence on the boundaries of said State Lease No. 16631 the following courses: South 2,600.00 feet, East 5,900.00 feet, South 3,650.00 feet and East 4,175.00 feet to a point on the East line of said Block 11 having Coordinates of X = 2,605,850.00 and Y = 361,330.00; thence South 2,125.00 feet on the East line of said Block 11 to a point having Coordinates of X = 2,605,850.00 and Y = 359,205.00; thence West 14,750.00 feet to a point on the West line of said Block 11 having Coordinates of X = 2,591,100.00 and Y = 359,205.00; thence North 7,375.00 feet on the West line of said Block 11 to the point of beginning, containing approximately 1,426 acres, as shown outlined in red on a plat on file in the Office of Mineral Resources, Department of Natural Resources. All bearings, distances and coordinates are based on Louisiana Coordinate System of 1927 (South Zone).

NOTE: The above tract is located in or near an oyster restricted area and all operations in such area must be conducted in strict conformity with the stipulations and/or regulations of the Louisiana Department of Wildlife and Fisheries.

NOTE: The State of Louisiana does hereby reserve, and this lease shall be subject to, the imprescriptible right of surface use in the nature of a servitude in favor of the Department of Natural Resources, including its Offices and Commissions, for the sole purpose of implementing, constructing, servicing and maintaining approved coastal zone management and/or restoration projects. Utilization of any and all rights derived under this lease by the mineral lessee, its agents, successors or assigns, shall not interfere with nor hinder the reasonable surface use by the Department of Natural Resources, its Offices or Commissions, as hereinabove reserved.

Applicant: Robert A. Schroeder, Inc.

Bidder	Cash Payment	Price / Acre	Rental	Oil	Gas	Other



BLOCK 1

P.O.B.
X=2,591,100.00
Y= 366,580.00

BLOCK 2

BLOCK 3

S.L. 16631

BLOCK 12

BLOCK 11

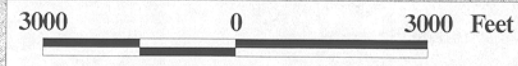
BLOCK 10

TR 32500
1426 +/- ACS.
MAY, 2000

MAIN PASS AREA, REV.

ST. BERNARD PARISH

OFFICIAL COPY
OFFICE OF MINERAL RESOURCES
DEPT. OF NATURAL RESOURCES
DO NOT REMOVE



TRACT 32501 - PORTION OF BLOCK 11, MAIN PASS AREA, REVISED, Plaquemines and St. Bernard Parishes, Louisiana

All of the lands now or formerly constituting the beds and bottoms of all water bodies of every nature and description and all islands and other lands formed by accretion or reliction, except tax lands, belonging to the State of Louisiana and not under mineral lease on May 10, 2000, situated in Plaquemines and St. Bernard Parishes, Louisiana, and more particularly described as follows: Beginning at a point on the West line of Block 11, Main Pass Area, Revised, having Coordinates of X = 2,591,100.00 and Y = 359,205.00; thence East 14,750.00 feet to a point on the East line of said Block 11 having Coordinates of X = 2,605,850.00 and Y = 359,205.00; thence South 7,375.00 feet on said East line of said Block 11 to its Southeast corner having Coordinates of X = 2,605,850.00 and Y = 351,830.00; thence West 14,750.00 feet on the South line of said Block 11 to its Southwest corner having Coordinates of X = 2,591,100.00 and Y = 351,830.00; thence North 7,375.00 feet on the West line of said Block 11 to the point of beginning, containing approximately 2,497.27 acres, as shown outlined in red on a plat on file in the Office of Mineral Resources, Department of Natural Resources. All bearings, distances and coordinates are based on Louisiana Coordinate System of 1927 (South Zone).

NOTE: The above tract is located in or near an oyster restricted area and all operations in such area must be conducted in strict conformity with the stipulations and/or regulations of the Louisiana Department of Wildlife and Fisheries.

NOTE: The State of Louisiana does hereby reserve, and this lease shall be subject to, the imprescriptible right of surface use in the nature of a servitude in favor of the Department of Natural Resources, including its Offices and Commissions, for the sole purpose of implementing, constructing, servicing and maintaining approved coastal zone management and/or restoration projects. Utilization of any and all rights derived under this lease by the mineral lessee, its agents, successors or assigns, shall not interfere with nor hinder the reasonable surface use by the Department of Natural Resources, its Offices or Commissions, as hereinabove reserved.

Applicant: Robert A. Schroeder, Inc.

Bidder	Cash Payment	Price / Acre	Rental	Oil	Gas	Other



TR 32501
2,497.27 +/- ACS.
MAY, 2000

P.O.B.
X=2,591,100.00
Y= 359,205.00

BLOCK 12

BLOCK 11

BLOCK 10

ST. BERNARD PARISH

PLAQUEMINES PARISH

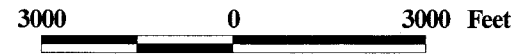
BLOCK 13

BLOCK 14

BLOCK 15

MAIN PASS AREA, REV.

OFFICIAL COPY
OFFICE OF MINERAL RESOURCES
DEPT. OF NATURAL RESOURCES
DO NOT REMOVE



65

TRACT 32502 - PORTION OF BLOCK 3, MAIN PASS AREA, REVISED, St. Bernard Parish, Louisiana

All of the lands now or formerly constituting the beds and bottoms of all water bodies of every nature and description and all islands and other lands formed by accretion or reliction, except tax lands, belonging to the State of Louisiana and not under mineral lease on May 10, 2000, situated in St. Bernard Parish, Louisiana, and more particularly described as follows: Beginning at the Northwest corner of Block 3, Main Pass Area, Revised, having Coordinates of X = 2,605,850.00 and Y = 381,330.00; thence East 5,234.51 feet on the North line of said Block 3 to the Northernmost Northwest corner of State Lease No. 7270, as amended, having Coordinates of X = 2,611,084.51 and Y = 381,330.00; thence on the boundaries of said State Lease No. 7270, State Lease No. 7018, as amended, State Lease No. 8189, as amended, State Lease No. 12789, as amended, State Lease No. 13608 and State Lease No. 13305 the following courses: South 56 degrees 54 minutes 48 seconds West 1,870.27 feet, South 56 degrees 54 minutes 48 seconds West 328.92 feet, South 78 degrees 39 minutes 00 seconds East 599.69 feet, South 81 degrees 33 minutes 07 seconds East 516.57 feet, South 88 degrees 46 minutes 37 seconds East 273.04 feet, North 234.34 feet, North 89 degrees 46 minutes 16 seconds East 803.98 feet, North 73 degrees 38 minutes 48 seconds East 510.16 feet, North 59 degrees 34 minutes 49 seconds East 595.18 feet, North 48 degrees 51 minutes 45 seconds East 789.71 feet, North 83 degrees 09 minutes 41 seconds East 236.67 feet and North 70 degrees 05 minutes 54 seconds East 499.52 feet to the Easternmost point of said State Lease No. 13305 on the North line of said Block 3 having Coordinates of X = 2,613,720.00 and Y = 381,330.00; thence East 0.08 feet on the North line of said Block 3 to a point having Coordinates of X = 2,613,720.08 and Y = 381,330.00; thence the following courses: South 68 degrees 47 minutes 42 seconds East 253.58 feet, South 80 degrees 39 minutes 45 seconds East 302.86 feet, South 86 degrees 04 minutes 59 seconds East 502.83 feet, South 85 degrees 50 minutes 00 seconds East 294.26 feet, South 77 degrees 06 minutes 37 seconds East 205.35 feet, South 66 degrees 28 minutes 57 seconds East 620.98 feet, South 69 degrees 52 minutes 05 seconds East 405.34 feet, South 68 degrees 24 minutes 17 seconds East 687.82 feet, South 74 degrees 19 minutes 52 seconds East 292.18 feet, South 77 degrees 03 minutes 21 seconds East 300.22 feet, South 84 degrees 27 minutes 51 seconds East 304.86 feet, South 87 degrees 56 minutes 22 seconds East 406.62 feet, North 84 degrees 45 minutes 05 seconds East 479.47 feet, North 77 degrees 42 minutes 12 seconds East 390.80 feet, North 66 degrees 13 minutes 35 seconds East 405.06 feet, North 60 degrees 11 minutes 12 seconds East 200.07 feet, North 38 degrees 40 minutes 42 seconds East 173.07 feet, North 67 degrees 53 minutes 18 seconds West 585.45 feet and North 70 degrees 28 minutes 32 seconds West 980.55 feet to a point on the North line of said Block 3 having Coordinates of X = 2,618,169.05 and Y = 381,330.00; thence East 2,430.95 feet on the North line of said Block 3 to its Northeast corner; thence South 7,375.00 feet on the East line of said Block 3 to a point having Coordinates of X = 2,620,600.00 and Y = 373,955.00; thence West 14,750.00 feet to a point on the West line of said Block 3; thence North 7,375.00 feet on the West line of said Block 3 to the point of beginning, containing approximately 2,152 acres, as shown outlined in red on a plat on file in the Office of Mineral Resources, Department of Natural Resources. All bearings, distances and coordinates are based on Louisiana Coordinate System of 1927 (South Zone).

NOTE: The above tract is located in or near an oyster restricted area and all operations in such area must be conducted in strict conformity with the stipulations and/or regulations of the Louisiana Department