

**TRACT 45124 - Natchitoches and Red River Parishes, Louisiana**

All of the lands now or formerly constituting the beds and bottoms of all water bodies of every nature and description as to which title is vested in the State of Louisiana, together with all islands arising therein and other lands formed by accretion or by reliction, where allowed by law, excepting tax adjudicated lands, and not presently under mineral lease on April 10, 2019, situated in Natchitoches and Red River Parishes, Louisiana, and more particularly described as follows: Beginning at a point having Coordinates of X = 1,744,986.96 and Y = 450,841.85; thence South 88 degrees 49 minutes 08 seconds East 5,494.63 feet to a point on the Western boundary of State Lease No. 20404 Tract A, as amended, having Coordinates of X = 1,750,480.42 and Y = 450,728.59; thence along the boundary of said State Lease No. 20404 Tract A, as amended, the following: South 00 degrees 43 minutes 12 seconds West 154.04 feet to a point having Coordinates of X = 1,750,478.48 and Y = 450,574.56 and South 89 degrees 59 minutes 18 seconds East 131.95 feet to a point having Coordinates of X = 1,750,610.43 and Y = 450,574.53; thence South 01 degree 06 minutes 06 seconds West 5,505.55 feet to a point having Coordinates of X = 1,750,504.58 and Y = 445,070.00; thence North 89 degrees 10 Minutes 08 seconds West 5,359.68 feet to a point on the East line of State Lease No. 20404 Tract B, as amended, having Coordinates of X = 1,745,145.47 and Y = 445,147.74; thence along the boundary of said State Lease No. 20404 Tract B, as amended, the following: North 00 degrees 32 Minutes 07 Seconds East 363.35 feet to a point having Coordinates of X = 1,745,148.86 and Y = 445,511.07, and North 88 degrees 55 minutes 35 seconds West 285.35 feet to a point having Coordinates of X = 1,744,863.56 and Y = 445,516.42; thence North 01 degree 19 minutes 39 seconds East 5,326.87 feet to the point of beginning, containing approximately **19 acres**, all as more particularly outlined on a plat on file in the Office of Mineral Resources, Department of Natural Resources. All bearings, distances and coordinates are based on Louisiana Coordinate System of 1927, (North or South Zone), where applicable.

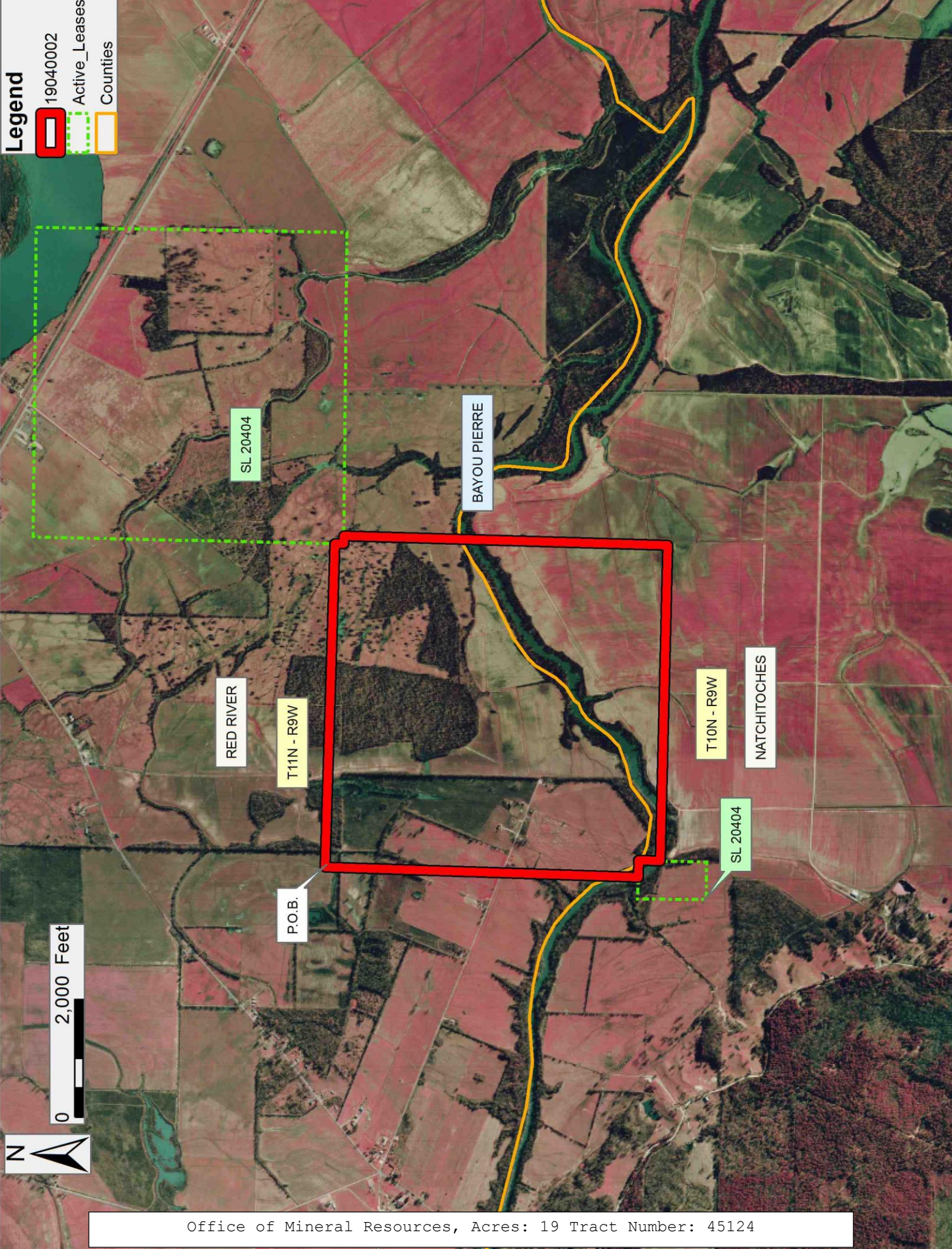
NOTE: The above description of the Tract nominated for lease has been provided and corrected, where required, exclusively by the nomination party. Any mineral lease selected from this Tract and awarded by the Louisiana State Mineral and Energy Board shall be without warranty of any kind, either express, implied, or statutory, including, but not limited to, the implied warranties of merchantability and fitness for a particular purpose. Should the mineral lease awarded by the Louisiana State Mineral and Energy Board be subsequently modified, cancelled or abrogated due to the existence of conflicting leases, operating agreements, private claims or other future obligations or conditions which may affect all or any portion of the leased Tract, it shall not relieve the Lessee of the obligation to pay any bonus due thereon to the Louisiana State Mineral and Energy Board, nor shall the Louisiana State Mineral and Energy Board be obligated to refund any consideration paid by the Lessor prior to such modification, cancellation, or abrogation, including, but not limited to, bonuses, rentals and royalties.

Applicant: WALTER RESOURCES

Bidder	Cash Payment	Price/Acre	Rental	Oil	Gas	Other

Legend

- 19040002
- Active\_Leases
- Counties



RED RIVER

BAYOU PIERRE

NATCHITOCHES

SL 20404

T11N - R9W

T10N - R9W

P.O.B.

SL 20404

**TRACT 45125 - Plaquemines Parish, Louisiana**

All of the lands now or formerly constituting the beds and bottoms of all water bodies of every nature and description as to which title is vested in the State of Louisiana, together with all islands arising therein and other lands formed by accretion or by reliction, where allowed by law, excepting tax adjudicated lands, and not presently under mineral lease on April 10, 2019, situated in Plaquemines Parish, Louisiana, and more particularly described as follows: Beginning at a point having Coordinates of X = 2,562,210.00 and Y = 259,745.00, said point being the southeast corner of State Lease No. 21695; thence North 31 degrees 08 minutes 39 seconds East 3,924.81 feet along the eastern boundary of said State Lease No. 21695 to a point being its northeast corner having Coordinates of X = 2,564,239.89 and Y = 263,104.12, said point also being the southeast corner of said State Lease No. 21694; thence South 70 degrees 18 minutes 40 seconds East 5,841.64 feet to a point having Coordinates of X = 2,569,740.00 and Y = 261,136.00; thence South 18 degrees 48 minutes 32 seconds West 3,973.17 feet to a point having Coordinates of X = 2,568,459.00 and Y = 257,375.00; thence North 69 degrees 13 minutes 49 seconds West 6,683.33 feet to the point of beginning, containing approximately **437 acres**, all as more particularly outlined on a plat on file in the Office of Mineral Resources, Department of Natural Resources. All bearings, distances and coordinates are based on Louisiana Coordinate System of 1927, (North or South Zone), where applicable.

NOTE: The above description of the Tract nominated for lease has been provided and corrected, where required, exclusively by the nomination party. Any mineral lease selected from this Tract and awarded by the Louisiana State Mineral and Energy Board shall be without warranty of any kind, either express, implied, or statutory, including, but not limited to, the implied warranties of merchantability and fitness for a particular purpose. Should the mineral lease awarded by the Louisiana State Mineral and Energy Board be subsequently modified, cancelled or abrogated due to the existence of conflicting leases, operating agreements, private claims or other future obligations or conditions which may affect all or any portion of the leased Tract, it shall not relieve the Lessee of the obligation to pay any bonus due thereon to the Louisiana State Mineral and Energy Board, nor shall the Louisiana State Mineral and Energy Board be obligated to refund any consideration paid by the Lessor prior to such modification, cancellation, or abrogation, including, but not limited to, bonuses, rentals and royalties.

NOTE: The State of Louisiana does hereby reserve, and this lease shall be subject to, the imprescriptible right of surface use in the nature of a servitude in favor of the Department of Natural Resources, including its Offices and Commissions, for the sole purpose of implementing, constructing, servicing and maintaining approved coastal zone management and/or restoration projects. Utilization of any and all rights derived under this lease by the mineral lessee, its agents, successors or assigns, shall not interfere with nor hinder the reasonable surface use by the Department of Natural Resources, its Offices or Commissions, as herein above reserved.

Applicant: ROBERT A. SCHROEDER, INC.

Bidder	Cash Payment	Price/ Acre	Rental	Oil	Gas	Other

**Legend**

-  19040003
-  Active\_Leases



0 2,000 Feet



Office of Mineral Resources, Acres: 437 Tract Number: 45125

**TRACT 45126 - Plaquemines Parish, Louisiana**

All of the lands now or formerly constituting the beds and bottoms of all water bodies of every nature and description as to which title is vested in the State of Louisiana, together with all islands arising therein and other lands formed by accretion or by reliction, where allowed by law, excepting tax adjudicated lands, and not presently under mineral lease on April 10, 2019, situated in Plaquemines Parish, Louisiana, and more particularly described as follows: Beginning at a point having Coordinates of X = 2,568,459.00 and Y = 257,375.00; thence North 18 degrees 48 minutes 32 seconds East 3,973.17 feet to a point having Coordinates of X = 2,569,740.00 and Y = 261,136.00; thence South 71 degrees 08 minutes 20 seconds East 6,333.59 feet to a point having Coordinates of X = 2,575,733.51 and Y = 259,088.51; thence South 24 degrees 39 minutes 31 seconds West 4,228.07 feet to a point having Coordinates of X = 2,573,969.51 and Y = 255,246.00; thence North 68 degrees 52 minutes 33 seconds West 5,907.48 feet to the point of beginning, containing approximately **383 acres**, all as more particularly outlined on a plat on file in the Office of Mineral Resources, Department of Natural Resources. All bearings, distances and coordinates are based on Louisiana Coordinate System of 1927, (North or South Zone), where applicable.

NOTE: The above description of the Tract nominated for lease has been provided and corrected, where required, exclusively by the nomination party. Any mineral lease selected from this Tract and awarded by the Louisiana State Mineral and Energy Board shall be without warranty of any kind, either express, implied, or statutory, including, but not limited to, the implied warranties of merchantability and fitness for a particular purpose. Should the mineral lease awarded by the Louisiana State Mineral and Energy Board be subsequently modified, cancelled or abrogated due to the existence of conflicting leases, operating agreements, private claims or other future obligations or conditions which may affect all or any portion of the leased Tract, it shall not relieve the Lessee of the obligation to pay any bonus due thereon to the Louisiana State Mineral and Energy Board, nor shall the Louisiana State Mineral and Energy Board be obligated to refund any consideration paid by the Lessor prior to such modification, cancellation, or abrogation, including, but not limited to, bonuses, rentals and royalties.

NOTE: The State of Louisiana does hereby reserve, and this lease shall be subject to, the imprescriptible right of surface use in the nature of a servitude in favor of the Department of Natural Resources, including its Offices and Commissions, for the sole purpose of implementing, constructing, servicing and maintaining approved coastal zone management and/or restoration projects. Utilization of any and all rights derived under this lease by the mineral lessee, its agents, successors or assigns, shall not interfere with nor hinder the reasonable surface use by the Department of Natural Resources, its Offices or Commissions, as herein above reserved.

Applicant: ROBERT A. SCHROEDER, INC.

Bidder	Cash Payment	Price/ Acre	Rental	Oil	Gas	Other



Legend



19040004



0 1,600 Feet

Office of Mineral Resources, Acres: 383 Tract Number: 45126

PLAQUEMINES

T19S - R17E

MISSISSIPPI RIVER

T20S - R29E

P.O.B.



**TRACT 45127 - Plaquemines Parish, Louisiana**

All of the lands now or formerly constituting the beds and bottoms of all water bodies of every nature and description as to which title is vested in the State of Louisiana, together with all islands arising therein and other lands formed by accretion or by reliction, where allowed by law, excepting tax adjudicated lands, and not presently under mineral lease on April 10, 2019, situated in Plaquemines Parish, Louisiana, and more particularly described as follows: Beginning at a point having Coordinates of X = 2,573,969.51 and Y = 255,246.00; thence North 24 degrees 39 minutes 31 seconds East 4,228.07 feet to a point having Coordinates of X = 2,575,733.51 and Y = 259,088.51; thence South 71 degrees 08 minutes 19 seconds East 6,333.58 feet to a point having Coordinates of X = 2,581,727.00 and Y = 257,041.00; thence South 29 degrees 47 minutes 48 seconds West 4,250.45 feet to a point having Coordinates of X = 2,579,614.85 and Y = 253,352.49; thence North 71 degrees 27 minutes 29 seconds West 5,954.43 feet to the point of beginning, (This tract includes only waterbottoms claimed and owned by the state and specifically excludes any land which the state may claim or own and to which the mineral rights are vested in the state), containing approximately **375 acres**, all as more particularly outlined on a plat on file in the Office of Mineral Resources, Department of Natural Resources. All bearings, distances and coordinates are based on Louisiana Coordinate System of 1927, (North or South Zone), where applicable.

NOTE: The above description of the Tract nominated for lease has been provided and corrected, where required, exclusively by the nomination party. Any mineral lease selected from this Tract and awarded by the Louisiana State Mineral and Energy Board shall be without warranty of any kind, either express, implied, or statutory, including, but not limited to, the implied warranties of merchantability and fitness for a particular purpose. Should the mineral lease awarded by the Louisiana State Mineral and Energy Board be subsequently modified, cancelled or abrogated due to the existence of conflicting leases, operating agreements, private claims or other future obligations or conditions which may affect all or any portion of the leased Tract, it shall not relieve the Lessee of the obligation to pay any bonus due thereon to the Louisiana State Mineral and Energy Board, nor shall the Louisiana State Mineral and Energy Board be obligated to refund any consideration paid by the Lessor prior to such modification, cancellation, or abrogation, including, but not limited to, bonuses, rentals and royalties.

NOTE: The State of Louisiana does hereby reserve, and this lease shall be subject to, the imprescriptible right of surface use in the nature of a servitude in favor of the Department of Natural Resources, including its Offices and Commissions, for the sole purpose of implementing, constructing, servicing and maintaining approved coastal zone management and/or restoration projects. Utilization of any and all rights derived under this lease by the mineral lessee, its agents, successors or assigns, shall not interfere with nor hinder the reasonable surface use by the Department of Natural Resources, its Offices or Commissions, as herein above reserved.

Applicant: ROBERT A. SCHROEDER, INC.

Bidder	Cash Payment	Price/ Acre	Rental	Oil	Gas	Other



0 2,000 Feet

PLAQUEMINES

T19S - R17E

MISSISSIPPI RIVER

T20S - R29E

P.O.B.

**TRACT 45128 - Portion of Block 2, West Delta Area, Plaquemines Parish, Louisiana**

All of the lands now or formerly constituting the beds and bottoms of all water bodies of every nature and description as to which title is vested in the State of Louisiana, together with all islands arising therein and other lands formed by accretion or by reliction, where allowed by law, excepting tax adjudicated lands, and not presently under mineral lease on April 10, 2019, situated in Plaquemines Parish, Louisiana, and more particularly described as follows: Beginning at a point being the Northwest corner of State Lease No. 21732 having Coordinates of X = 2,510,150.00 and Y = 248,354.05; thence along the West boundary of said State Lease No. 21732 South 3,354.05 feet to the Southwest corner of said State Lease No. 21732 having Coordinates of X = 2,510,150.00 and Y = 245,000.00; thence South approximately 7,212 feet to a point on the boundary of the northern portion of Special Section 16, Township 21 South, Range 27 East created under Senate Act 971 in the 2010 Regular Session; thence along the boundary of said Special Section 16 the following: Southwesterly, Southerly, and Northeasterly approximately 2,566 feet to a point; thence South approximately 1,656 feet to a point of intersection with the southern portion of said Special Section 16, Township 21 South, Range 27 East; thence along the boundary of said Special Section 16 the following: Southwesterly, Westerly, Southerly, and Easterly to a point of intersection with a line that bears North and commences at a point having Coordinates of X = 2,510,150.00 and Y = 230,650.66; thence West 7,923.27 feet to a point having Coordinates of X = 2,502,226.73 and Y = 230,650.66; thence North 5,631.66 feet to the Southeast corner of State Lease No. 1753, as amended, having Coordinates of X = 2,502,226.73 and Y = 236,282.32; thence on and along the boundary of said State Lease No. 1753, as amended, the following courses: North 00 degrees 04 minutes 59 seconds West 1,226.80 feet to a point having Coordinates of X = 2,502,224.95 and Y = 237,509.12, North 00 degrees 05 minutes 11 seconds West 3,060.88 feet to a point having Coordinates of X = 2,502,220.33 and Y = 240,570.00, North 89 degrees 15 minutes 00 seconds East 4,396.44 feet to a point having Coordinates of X = 2,506,616.39 and Y = 240,627.54, North 00 degrees 02 minutes 12 seconds West 5,045.87 feet to the Northeast corner of said State Lease No. 1753, as amended, having Coordinates of X = 2,506,613.16 and Y = 245,673.41; thence North 2,680.64 feet to a point having Coordinates of X = 2,506,613.16 and Y = 248,354.05; thence East 3,536.84 feet to the point of beginning, containing approximately **1,496 acres**, all as more particularly outlined on a plat on file in the Office of Mineral Resources, Department of Natural Resources. All bearings, distances and coordinates are based on Louisiana Coordinate System of 1927, (North or South Zone), where applicable.

NOTE: The above description of the Tract nominated for lease has been provided and corrected, where required, exclusively by the nomination party. Any mineral lease selected from this Tract and awarded by the Louisiana State Mineral and Energy Board shall be without warranty of any kind, either express, implied, or statutory, including, but not limited to, the implied warranties of merchantability and fitness for a particular purpose. Should

the mineral lease awarded by the Louisiana State Mineral and Energy Board be subsequently modified, cancelled or abrogated due to the existence of conflicting leases, operating agreements, private claims or other future obligations or conditions which may affect all or any portion of the leased Tract, it shall not relieve the Lessee of the obligation to pay any bonus due thereon to the Louisiana State Mineral and Energy Board, nor shall the Louisiana State Mineral and Energy Board be obligated to refund any consideration paid by the Lessor prior to such modification, cancellation, or abrogation, including, but not limited to, bonuses, rentals and royalties.

NOTE: The State of Louisiana does hereby reserve, and this lease shall be subject to, the imprescriptible right of surface use in the nature of a servitude in favor of the Department of Natural Resources, including its Offices and Commissions, for the sole purpose of implementing, constructing, servicing and maintaining approved coastal zone management and/or restoration projects. Utilization of any and all rights derived under this lease by the mineral lessee, its agents, successors or assigns, shall not interfere with nor hinder the reasonable surface use by the Department of Natural Resources, its Offices or Commissions, as herein above reserved.





Applicant: OIL LAND SERVICES, INC.

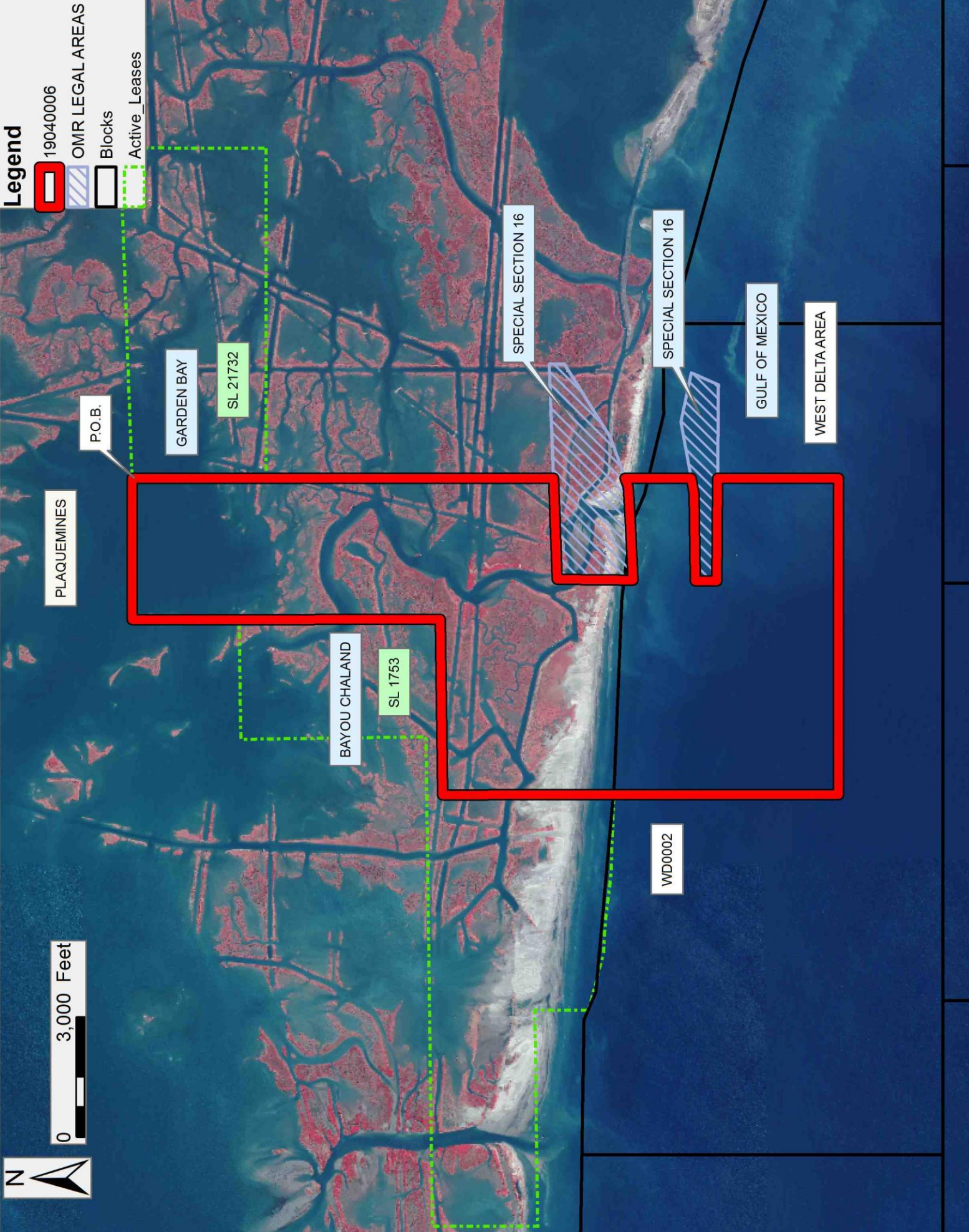
Bidder	Cash Payment	Price/Acre	Rental	Oil	Gas	Other



0 3,000 Feet

**Legend**

-  19040006
-  OMR LEGAL AREAS
-  Blocks
-  Active\_Leases



Office of Mineral Resources, Acres: 1496 Tract Number: 45128

**TRACT 45129 - Portion of Block 3, West Delta Area, Plaquemines Parish, Louisiana**

All of the lands now or formerly constituting the beds and bottoms of all water bodies of every nature and description as to which title is vested in the State of Louisiana, together with all islands arising therein and other lands formed by accretion or by reliction, where allowed by law, excepting tax adjudicated lands, and not presently under mineral lease on April 10, 2019, situated in Plaquemines Parish, Louisiana, and more particularly described as follows: Beginning at a point being the Northeast Corner of State Lease No. 21732 having Coordinates of X = 2,518,415.20 and Y = 248,650.66; thence East 8,000.00 feet to a point having Coordinates of X = 2,526,415.20 and Y = 248,650.66; thence South 18,000.00 feet to a point having Coordinates of X = 2,526,415.20 and Y = 230,650.66; thence West 8,003.51 feet to a point having Coordinates of X = 2,518,411.69 and Y = 230,650.66; thence North 14,349.34 feet to the Southeast Corner of said State Lease No. 21732, having Coordinates of X = 2,518,411.69 and Y = 245,000.00; thence North 00 degrees 03 minutes 18 seconds East 3,650.66 feet to the point of beginning, containing approximately **2,200 acres**, all as more particularly outlined on a plat on file in the Office of Mineral Resources, Department of Natural Resources. All bearings, distances and coordinates are based on Louisiana Coordinate System of 1927, (North or South Zone), where applicable.

NOTE: The above description of the Tract nominated for lease has been provided and corrected, where required, exclusively by the nomination party. Any mineral lease selected from this Tract and awarded by the Louisiana State Mineral and Energy Board shall be without warranty of any kind, either express, implied, or statutory, including, but not limited to, the implied warranties of merchantability and fitness for a particular purpose. Should the mineral lease awarded by the Louisiana State Mineral and Energy Board be subsequently modified, cancelled or abrogated due to the existence of conflicting leases, operating agreements, private claims or other future obligations or conditions which may affect all or any portion of the leased Tract, it shall not relieve the Lessee of the obligation to pay any bonus due thereon to the Louisiana State Mineral and Energy Board, nor shall the Louisiana State Mineral and Energy Board be obligated to refund any consideration paid by the Lessor prior to such modification, cancellation, or abrogation, including, but not limited to, bonuses, rentals and royalties.

NOTE: The State of Louisiana does hereby reserve, and this lease shall be subject to, the imprescriptible right of surface use in the nature of a servitude in favor of the Department of Natural Resources, including its Offices and Commissions, for the sole purpose of implementing, constructing, servicing and maintaining approved coastal zone management and/or restoration projects. Utilization of any and all rights derived under this lease by the mineral lessee, its agents, successors or assigns, shall not interfere with nor hinder the reasonable surface use by the Department of Natural Resources, its Offices or Commissions, as herein above reserved.



NOTE: It appears, according to our records, that a portion of this Tract is located within the restrictive safety fairway area as set out by the Corps of Engineers, U.S. Army and/or the restrictive anchorage area as set out by the U.S. Coast Guard.

Applicant: OIL LAND SERVICES, INC.

Bidder	Cash Payment	Price/Acre	Rental	Oil	Gas	Other



0 3,000 Feet

P.O.B.

SL 21732

BAYOU HUERTES

WD0003




PLAQUEMINES

BAY JOE WISE

GULF OF MEXICO

WEST DELTA AREA

### Legend

-  19040008
-  Blocks
-  Active\_Leases



**TRACT 45130 - Portion of Blocks 2, and 3, West Delta Area, Plaquemines Parish, Louisiana**

All of the lands now or formerly constituting the beds and bottoms of all water bodies of every nature and description as to which title is vested in the State of Louisiana, together with all islands arising therein and other lands formed by accretion or by reliction, where allowed by law, excepting tax adjudicated lands, and not presently under mineral lease on April 10, 2019, situated in Plaquemines Parish, Louisiana, and more particularly described as follows: Beginning at a point being the Southeast Corner of State Lease No. 21732 having Coordinates of X = 2,518,411.69 and Y = 245,000.00; thence South 14,349.34 feet to a point having Coordinates of X = 2,518,411.69 and Y = 230,650.66; thence West 8,261.69 feet to a point having Coordinates of X = 2,510,150.00 and Y = 230,650.66; thence North approximately 3,035 feet to a point of intersection with the southern portion of Special Section 16, Township 21 South, Range 27 East created under Senate Act 971 in the 2010 Regular Session; thence around the boundary of said Special Section 16 the following: Easterly, Northeasterly, Northwesterly, and Southwesterly approximately 1,438 feet to a point; thence North approximately 1,656 feet to a point of intersection with the northern portion of said Special Section 16, Township 21 South, Range 27 East; thence around the boundary of said Special Section 16 the following: Northeasterly, Northerly, and Southwesterly to a point of intersection with a line that bears South and commences at a point having Coordinates of X = 2,510,150.00 and Y = 245,000.00; thence North approximately 7,212 feet to the Southwest Corner of said State Lease No. 21732, having Coordinates of X = 2,510,150.00 and Y = 245,000.00; thence along the Southern boundary of said State Lease No. 21732 East 8,261.69 feet to the point of beginning, containing approximately **1,443 acres**, all as more particularly outlined on a plat on file in the Office of Mineral Resources, Department of Natural Resources. All bearings, distances and coordinates are based on Louisiana Coordinate System of 1927, (North or South Zone), where applicable.

NOTE: The above description of the Tract nominated for lease has been provided and corrected, where required, exclusively by the nomination party. Any mineral lease selected from this Tract and awarded by the Louisiana State Mineral and Energy Board shall be without warranty of any kind, either express, implied, or statutory, including, but not limited to, the implied warranties of merchantability and fitness for a particular purpose. Should the mineral lease awarded by the Louisiana State Mineral and Energy Board be subsequently modified, cancelled or abrogated due to the existence of conflicting leases, operating agreements, private claims or other future obligations or conditions which may affect all or any portion of the leased Tract, it shall not relieve the Lessee of the obligation to pay any bonus due thereon to the Louisiana State Mineral and Energy Board, nor shall the Louisiana State Mineral and Energy Board be obligated to refund any consideration paid by the Lessor prior to such modification, cancellation, or abrogation, including, but not limited to, bonuses, rentals and royalties.

NOTE: The State of Louisiana does hereby reserve, and this lease shall be subject to, the imprescriptible right of surface use in the nature of a servitude in favor of the Department of Natural Resources, including its Offices and Commissions, for the sole purpose of implementing, constructing, servicing and maintaining approved coastal zone management and/or restoration projects. Utilization of any and all rights derived under this lease by the mineral lessee, its agents, successors or assigns, shall not interfere with nor hinder the reasonable surface use by the Department of Natural Resources, its Offices or Commissions, as herein above reserved.

NOTE: It appears, according to our records, that a portion of this Tract is located within the restrictive safety fairway area as set out by the Corps of Engineers, U.S. Army and/or the restrictive anchorage area as set out by the U.S. Coast Guard.

Applicant: OIL LAND SERVICES, INC.

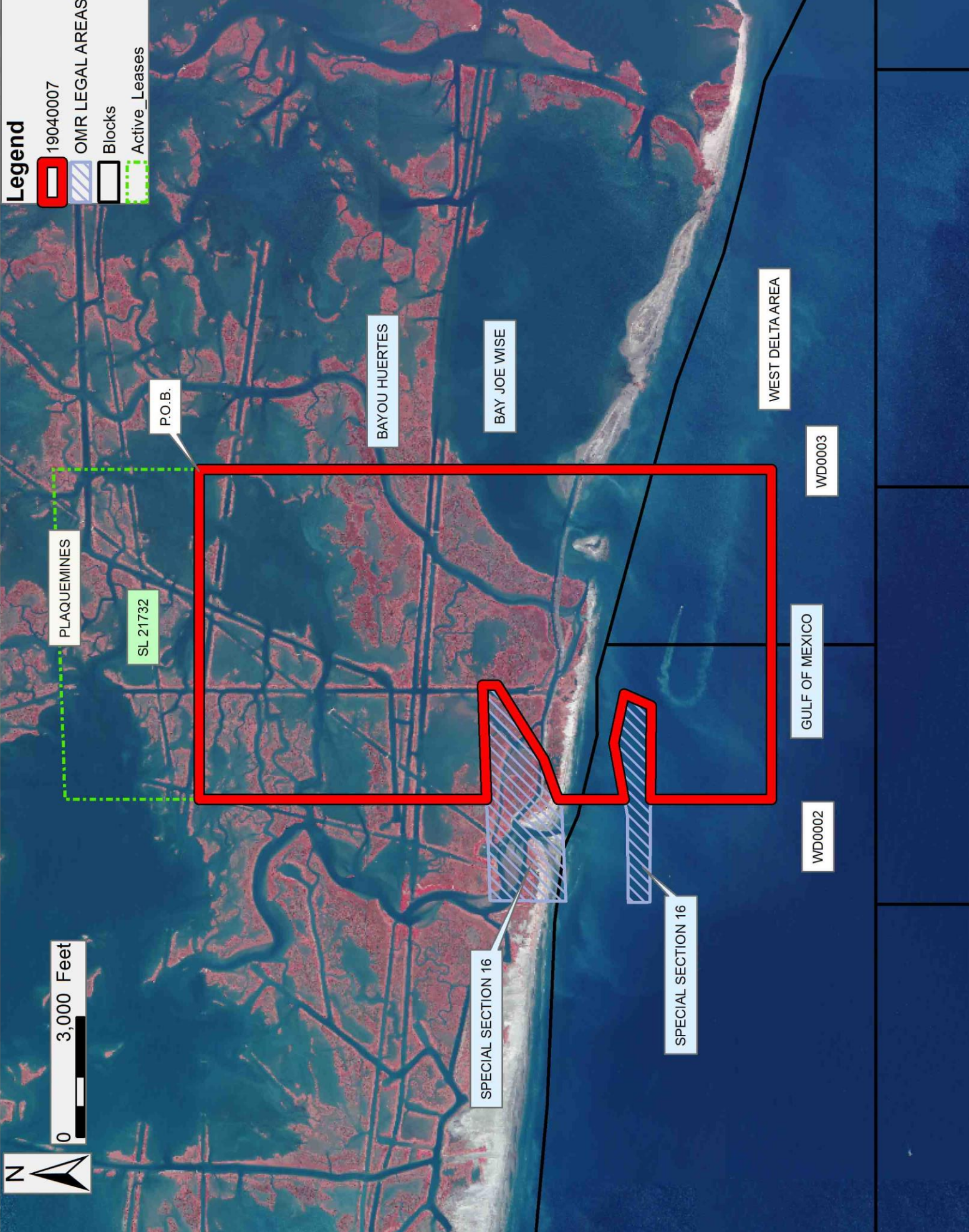
Bidder	Cash Payment	Price/Acre	Rental	Oil	Gas	Other



0 3,000 Feet

### Legend

- 19040007
- OMR LEGAL AREAS
- Blocks
- Active\_Leases



Office of Mineral Resources, Acres: 1443 Tract Number: 45130