

#### **TRACT 40914 - Cameron Parish, Louisiana**

All of the lands now or formerly constituting the beds and bottoms of all water bodies of every nature and description as to which title is vested in the State of Louisiana, together with all islands arising therein and other lands formed by accretion or by reliction, where allowed by law, excepting tax adjudicated lands, and not presently under mineral lease on April 8, 2009, situated in Cameron Parish, Louisiana, and more particularly described as follows: Beginning at a point on the Eastern boundary of State Lease No. 19401, also being the Southwest corner of State Lease No. 19942 having Coordinates of X = 1,560,248.43 and Y = 454,879.00; thence East 119.57 feet along the South boundary of said State Lease No. 19942 to its Southeast corner, also being the Southwest corner of State Lease No. 19941 having Coordinates of X = 1,560,368.00 and Y = 454,879.00; thence East 4,742.53 feet along the South boundary of said State Lease No. 19941 to its Southeast corner having Coordinates of X = 1,565,110.53 and Y = 454,879.00; thence South 6,575.00 feet to a point having Coordinates of X = 1,565,110.53 and Y = 448,304.00; thence West 6,722.53 feet to a point having Coordinates of X = 1,558,388.00 and Y = 448,304.00; thence North 5,423.00 feet to the Southwest corner of said State Lease No. 19401 having Coordinates of X = 1,558,388.00 and Y = 453,727.00; thence along the boundary of said State Lease No. 19401 the following courses: East 1,860.43 feet and North 1,152.00 feet to the point of beginning, containing approximately **570 acres**, all as more particularly outlined on a plat on file in the Office of Mineral Resources, Department of Natural Resources. All bearings, distances and coordinates are based on Louisiana Coordinate System of 1927, (North or South Zone), where applicable.

NOTE: The above description of the Tract nominated for lease has been provided and corrected, where required, exclusively by the nomination party. Any mineral lease selected from this Tract and awarded by the Louisiana State Mineral Board shall be without warranty of any kind, either express, implied, or statutory, including, but not limited to, the implied warranties of merchantability and fitness for a particular purpose. Should the mineral lease awarded by the Louisiana State Mineral Board be subsequently modified, cancelled or abrogated due to the existence of conflicting leases, operating agreements, private claims or other future obligations or conditions which may affect all or any portion of the leased Tract, it shall not relieve the Lessee of the obligation to pay any bonus due thereon to the Louisiana State Mineral Board, nor shall the Louisiana State Mineral Board be obligated to refund any consideration paid by the Lessor prior to such modification, cancellation, or abrogation, including, but not limited to, bonuses, rentals and royalties.

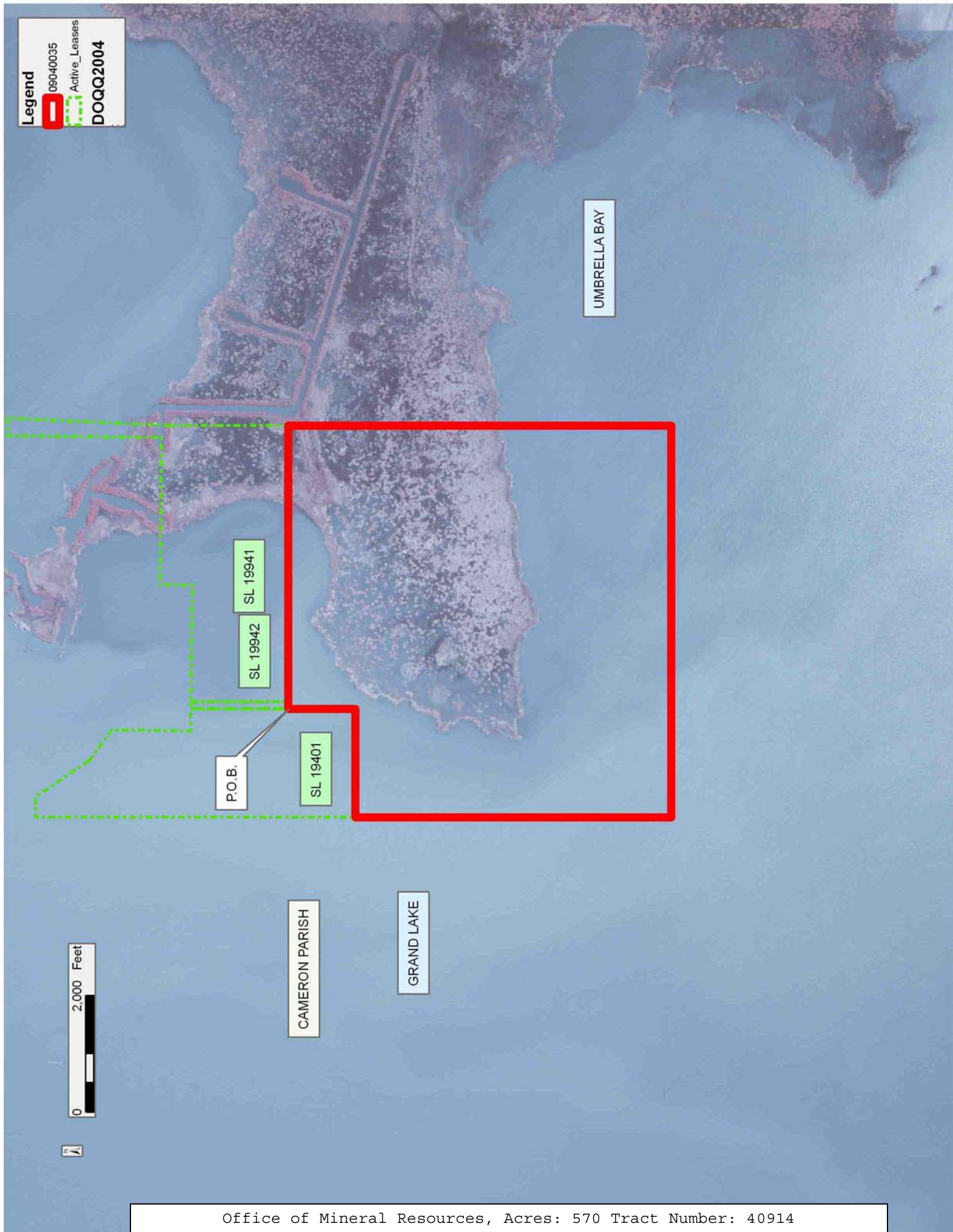
NOTE: The State of Louisiana does hereby reserve, and this lease shall be subject to, the imprescriptible right of surface use in the nature of a servitude in favor of the Department of Natural Resources, including its Offices and Commissions, for the sole purpose of implementing, constructing, servicing and maintaining approved coastal zone management and/or restoration projects. Utilization of any and all rights derived

under this lease by the mineral lessee, its agents, successors or assigns, shall not interfere with nor hinder the reasonable surface use by the Department of Natural Resources, its Offices or Commissions, as herein above reserved.

Applicant: OURAY PETROLEUM

Bidder	Cash Payment	Price/ Acre	Rental	Oil	Gas	Other

**Legend**  
09040035  
Active\_Leases  
DOQQ2004



**TRACT 40915 - Portion of Block 33, Breton Sound Area, Plaquemines Parish, Louisiana**

All of the lands now or formerly constituting the beds and bottoms of all water bodies of every nature and description as to which title is vested in the State of Louisiana, together with all islands arising therein and other lands formed by accretion or by reliction, where allowed by law, excepting tax adjudicated lands, and not presently under mineral lease on April 8, 2009, situated in Plaquemines Parish, Louisiana, and more particularly described as follows: Beginning at the Northwest corner of Block 33, Breton Sound Area, having Coordinates of X = 2,635,350.00 and Y = 322,330.00; thence East 7,375.00 feet along the North line of said Block 33 to a point having Coordinates of X = 2,642,725.00 and Y = 322,330.00; thence South 14,750.00 feet to a point on the South line of said Block 33 having Coordinates of X = 2,642,725.00 and Y = 307,580.00; thence West 7,375.00 feet along the South line of said Block 33 to its Southwest corner having Coordinates of X = 2,635,350.00 and Y = 307,580.00; thence North 8,267.00 feet along the West line of said Block 33 to the Southwest corner of State Lease No. 18078 having Coordinates of X = 2,635,350.00 and Y = 315,847.00; thence East 3,766.00 feet to its Southeast corner, also being the Southwest corner of State Lease No. 20003 having Coordinates of X = 2,639,116.00 and Y = 315,847.00; thence along the boundary of said State Lease No. 20003 the following courses: East 3,228.00 feet, North 3,688.00 feet, North 64 degrees 22 minutes 04 seconds West 3,076.79 feet, North 88 degrees 44 minutes 51 seconds West 2,470.59 feet, South 1,185.00 feet, and South 56 degrees 41 minutes 40 seconds East 1,764.58 feet to the Northernmost corner of said State Lease No. 18078 having Coordinates of X = 2,638,574.76 and Y = 318,766.06; thence South 50 degrees 07 minutes 57 seconds West 4,201.48 feet along the boundary of said State Lease No. 18078 to its Westernmost Northwest corner, also being a point on the West line of said Block 33 having Coordinates of X = 2,635,350.00 and Y = 316,072.86; thence North 6,257.14 feet along the West line of said Block 33 to the point of beginning, containing approximately **1,932.73 acres**, all as more particularly outlined on a plat on file in the Office of Mineral Resources, Department of Natural Resources. All bearings, distances and coordinates are based on Louisiana Coordinate System of 1927, (North or South Zone), where applicable.

NOTE: The above description of the Tract nominated for lease has been provided and corrected, where required, exclusively by the nomination party. Any mineral lease selected from this Tract and awarded by the Louisiana State Mineral Board shall be without warranty of any kind, either express, implied, or statutory, including, but not limited to, the implied warranties of merchantability and fitness for a particular purpose. Should the mineral lease awarded by the Louisiana State Mineral Board be subsequently modified, cancelled or abrogated due to the existence of conflicting leases, operating agreements, private claims or other future obligations or conditions which may affect all or any portion of the leased Tract, it shall not relieve the Lessee of the obligation to pay any bonus due thereon to the Louisiana State Mineral Board, nor shall

the Louisiana State Mineral Board be obligated to refund any consideration paid by the Lessor prior to such modification, cancellation, or abrogation, including, but not limited to, bonuses, rentals and royalties.

NOTE: The State of Louisiana does hereby reserve, and this lease shall be subject to, the imprescriptible right of surface use in the nature of a servitude in favor of the Department of Natural Resources, including its Offices and Commissions, for the sole purpose of implementing, constructing, servicing and maintaining approved coastal zone management and/or restoration projects. Utilization of any and all rights derived under this lease by the mineral lessee, its agents, successors or assigns, shall not interfere with nor hinder the reasonable surface use by the Department of Natural Resources, its Offices or Commissions, as herein above reserved.

NOTE: The Department of Wildlife and Fisheries has designated certain areas in the coastal waters of the State of Louisiana as Oyster Seed Bed Areas. The exact location of those Seed Bed Areas must be obtained from the Department of Wildlife and Fisheries and any work done under a mineral lease from the State of Louisiana may necessarily be conducted in conformity with the rules and regulations promulgated by the said Department of Wildlife and Fisheries for Oyster Seed Bed Areas.

Applicant: HAROLD J. ANDERSON, INC.

Bidder	Cash Payment	Price/ Acre	Rental	Oil	Gas	Other

**Legend**

09040045

Blocks

Active\_Leases

BS0032

BS0033

BRETON SOUND AREA

BS0048

PLAQUEMINES PARISH

P.O.B.



GULF OF MEXICO

MP0026

MAIN PASS AREA, REVISED

MP0031

SL 20003

SL 18078

**TRACT 40916 - Portion of Block 33, Breton Sound Area, Plaquemines Parish, Louisiana**

All of the lands now or formerly constituting the beds and bottoms of all water bodies of every nature and description as to which title is vested in the State of Louisiana, together with all islands arising therein and other lands formed by accretion or by reliction, where allowed by law, excepting tax adjudicated lands, and not presently under mineral lease on April 8, 2009, situated in Plaquemines Parish, Louisiana, and more particularly described as follows: Beginning at a point on the North line of Block 33, Breton Sound Area, having Coordinates of X = 2,642,725.00 and Y = 322,330.00; thence East 7,375.00 feet along the North line of said Block 33 to its Northeast corner having Coordinates of X = 2,650,100.00 and Y = 322,330.00; thence South 7,514.46 feet along the East line of said Block 33 to the Northeast corner of State Lease No. 16298, as amended having Coordinates of X = 2,650,100.00 and Y = 314,815.54; thence along the boundary of said State Lease No. 16298 the following courses: West 1,022.05 feet and South 2,035.54 feet to its Southwest corner also being a point on the North line of State Lease No. 16795, as amended having Coordinates of X = 2,649,077.95 and Y = 312,780.00; thence along the boundary of said State Lease No. 16795 the following courses: West 927.95 feet, South 4,204.21 feet and East 1,950.00 feet to its Southeast corner also being a point on the East line of said Block 33 having Coordinates of X = 2,650,100.00 and Y = 308,575.79; thence South 995.79 feet along the East line of said Block 33 to its Southeast corner having Coordinates of X = 2,650,100.00 and Y = 307,580.00; thence West 7,375.00 feet along the South line of said Block 33 to a point having Coordinates of X = 2,642,725.00 and Y = 307,580.00; thence North 14,750.00 feet to the point of beginning, **LESS AND EXCEPT** State Lease No. 19078 that lies within the above described tract, more particularly described as follows: Commencing at the point of beginning of the above Nominated Area having Coordinates of X = 2,642,725.00 and Y = 322,330.00; thence South 60 degrees 23 minutes 18 seconds East 3,845.21 feet to the Northernmost point of said State Lease No. 19078 having Coordinates of X = 2,646,068.00 and Y = 320,430.00; thence along the boundary of said State Lease No. 19078 the following courses: South 61 degrees 34 minutes 26 seconds East 4,117.43 feet, South 664.00 feet, South 59 degrees 47 minutes 30 seconds West 1,625.78 feet, West 2,886.00 feet, North 10 degrees 13 minutes 17 seconds West 2,271.04 feet and North 41 degrees 38 minutes 11 seconds East 1,614.99 feet to the point of beginning, containing approximately **2,261.31 acres**, all as more particularly outlined on a plat on file in the Office of Mineral Resources, Department of Natural Resources. All bearings, distances and coordinates are based on Louisiana Coordinate System of 1927, (North or South Zone), where applicable.

NOTE: The above description of the Tract nominated for lease has been provided and corrected, where required, exclusively by the nomination party. Any mineral lease selected from this Tract and awarded by the Louisiana State Mineral Board shall be without warranty of any kind, either express, implied, or statutory, including, but not limited to, the

implied warranties of merchantability and fitness for a particular purpose. Should the mineral lease awarded by the Louisiana State Mineral Board be subsequently modified, cancelled or abrogated due to the existence of conflicting leases, operating agreements, private claims or other future obligations or conditions which may affect all or any portion of the leased Tract, it shall not relieve the Lessee of the obligation to pay any bonus due thereon to the Louisiana State Mineral Board, nor shall the Louisiana State Mineral Board be obligated to refund any consideration paid by the Lessor prior to such modification, cancellation, or abrogation, including, but not limited to, bonuses, rentals and royalties.

NOTE: The State of Louisiana does hereby reserve, and this lease shall be subject to, the imprescriptible right of surface use in the nature of a servitude in favor of the Department of Natural Resources, including its Offices and Commissions, for the sole purpose of implementing, constructing, servicing and maintaining approved coastal zone management and/or restoration projects. Utilization of any and all rights derived under this lease by the mineral lessee, its agents, successors or assigns, shall not interfere with nor hinder the reasonable surface use by the Department of Natural Resources, its Offices or Commissions, as herein above reserved.

NOTE: The Department of Wildlife and Fisheries has designated certain areas in the coastal waters of the State of Louisiana as Oyster Seed Bed Areas. The exact location of those Seed Bed Areas must be obtained from the Department of Wildlife and Fisheries and any work done under a mineral lease from the State of Louisiana may necessarily be conducted in conformity with the rules and regulations promulgated by the said Department of Wildlife and Fisheries for Oyster Seed Bed Areas.

Applicant: HAROLD J. ANDERSON, INC.

Bidder	Cash Payment	Price/ Acre	Rental	Oil	Gas	Other



**Legend**

09040050

Blocks

Active\_Leases



**TRACT 40917 - Portion of Block 34, Breton Sound Area, Plaquemines Parish, Louisiana**

All of the lands now or formerly constituting the beds and bottoms of all water bodies of every nature and description as to which title is vested in the State of Louisiana, together with all islands arising therein and other lands formed by accretion or by reliction, where allowed by law, excepting tax adjudicated lands, and not presently under mineral lease on April 8, 2009, situated in Plaquemines Parish, Louisiana, and more particularly described as follows: Beginning at a point on the Eastern boundary of State Lease No. 17767, as amended, also being the Southwest corner of State Lease No. 14217, as amended, having Coordinates of X = 2,660,233.55 and Y = 315,836.48; thence East 4,616.45 feet along the Southern boundary of said State Lease No. 14217 to its Southeast corner, also being a point on the East line of said Block 34 having Coordinates of X = 2,664,850.00 and Y = 315,836.48; thence South 8,256.48 feet along the East line of said Block 34 to its Southeast corner having Coordinates of X = 2,664,850.00 and Y = 307,580.00; thence West 3,494.65 feet along the South line of said Block 34 to the Southeast corner of State Lease No. 20004 having Coordinates of X = 2,661,355.35 and Y = 307,580.00; thence North 19 degrees 44 minutes 49 seconds West 3,320.25 feet along the Eastern boundary of said State Lease No. 20004 to its Northeast corner, also being the Southeast corner of said State Lease No. 17767 having Coordinates of X = 2,660,233.55 and Y = 310,705.00; thence North 5,131.48 feet along the Eastern boundary of said State Lease No. 17767 to the point of beginning, containing approximately **834.78 acres**, all as more particularly outlined on a plat on file in the Office of Mineral Resources, Department of Natural Resources. All bearings, distances and coordinates are based on Louisiana Coordinate System of 1927, (North or South Zone), where applicable.

NOTE: The above description of the Tract nominated for lease has been provided and corrected, where required, exclusively by the nomination party. Any mineral lease selected from this Tract and awarded by the Louisiana State Mineral Board shall be without warranty of any kind, either express, implied, or statutory, including, but not limited to, the implied warranties of merchantability and fitness for a particular purpose. Should the mineral lease awarded by the Louisiana State Mineral Board be subsequently modified, cancelled or abrogated due to the existence of conflicting leases, operating agreements, private claims or other future obligations or conditions which may affect all or any portion of the leased Tract, it shall not relieve the Lessee of the obligation to pay any bonus due thereon to the Louisiana State Mineral Board, nor shall the Louisiana State Mineral Board be obligated to refund any consideration paid by the Lessor prior to such modification, cancellation, or abrogation, including, but not limited to, bonuses, rentals and royalties.

NOTE: The State of Louisiana does hereby reserve, and this lease shall be subject to, the imprescriptible right of surface use in the nature of a servitude in favor of the Department of Natural Resources, including its

Offices and Commissions, for the sole purpose of implementing, constructing, servicing and maintaining approved coastal zone management and/or restoration projects. Utilization of any and all rights derived under this lease by the mineral lessee, its agents, successors or assigns, shall not interfere with nor hinder the reasonable surface use by the Department of Natural Resources, its Offices or Commissions, as herein above reserved.

NOTE: The Department of Wildlife and Fisheries has designated certain areas in the coastal waters of the State of Louisiana as Oyster Seed Bed Areas. The exact location of those Seed Bed Areas must be obtained from the Department of Wildlife and Fisheries and any work done under a mineral lease from the State of Louisiana may necessarily be conducted in conformity with the rules and regulations promulgated by the said Department of Wildlife and Fisheries for Oyster Seed Bed Areas.

Applicant: HAROLD J. ANDERSON, INC.

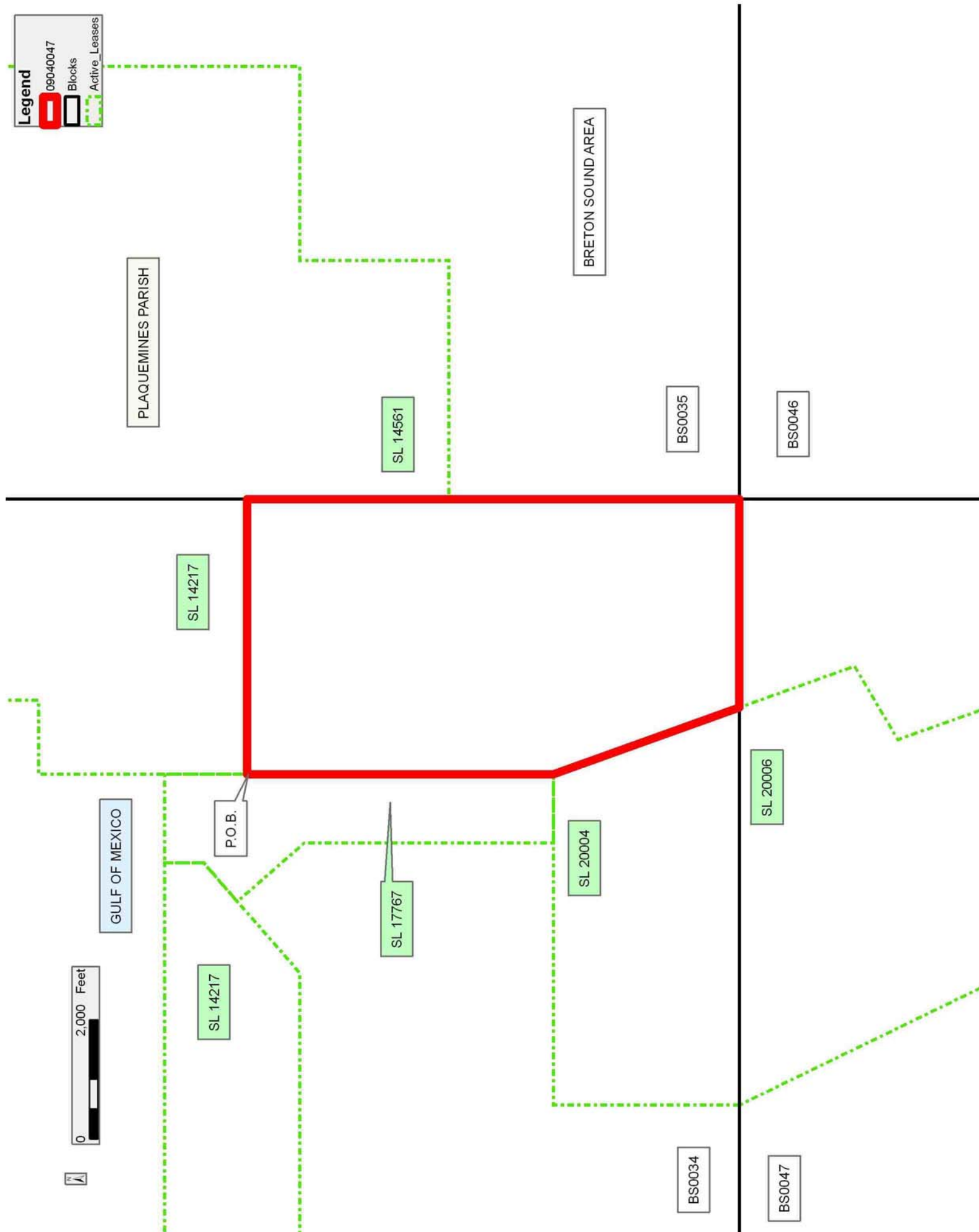
Bidder	Cash Payment	Price/ Acre	Rental	Oil	Gas	Other

**Legend**

09040047

Blocks

Active\_Leases



**TRACT 40918 - Portion of Block 34, Breton Sound Area, Plaquemines Parish, Louisiana**

All of the lands now or formerly constituting the beds and bottoms of all water bodies of every nature and description as to which title is vested in the State of Louisiana, together with all islands arising therein and other lands formed by accretion or by reliction, where allowed by law, excepting tax adjudicated lands, and not presently under mineral lease on April 8, 2009, situated in Plaquemines Parish, Louisiana, and more particularly described as follows: Beginning at the Northeast corner of State Lease No. 14216, as amended, also being the Northwest corner of State Lease No. 17965 having Coordinates of X = 2,656,907.07 and Y = 314,955.00; thence South 21 degrees 00 minutes 16 seconds East 4,552.50 feet along the Western boundary of said State Lease No. 17965 to its Southwest corner, also being a point on the Northern boundary of State Lease No. 20004 having Coordinates of X = 2,658,538.87 and Y = 310,705.00; thence West 3,848.87 feet along the Northern boundary of said State Lease No. 20004 to its Northwest corner, also being a point on the Eastern boundary of State Lease No. 14560, as amended, having Coordinates of X = 2,654,690.00 and Y = 310,705.00; thence North 562.50 feet along the Eastern boundary of said State Lease No. 14560 to its Northeast corner, also being the Southeast corner of said State Lease No. 14216 having Coordinates of X = 2,654,690.00 and Y = 311,267.50; thence along the boundary of said State Lease No. 14216 the following courses: North 1,750.00 feet and North 48 degrees 50 minutes 59 seconds East 2,944.37 feet to the point of beginning, containing approximately **246.61 acres**, all as more particularly outlined on a plat on file in the Office of Mineral Resources, Department of Natural Resources. All bearings, distances and coordinates are based on Louisiana Coordinate System of 1927, (North or South Zone), where applicable.

NOTE: The above description of the Tract nominated for lease has been provided and corrected, where required, exclusively by the nomination party. Any mineral lease selected from this Tract and awarded by the Louisiana State Mineral Board shall be without warranty of any kind, either express, implied, or statutory, including, but not limited to, the implied warranties of merchantability and fitness for a particular purpose. Should the mineral lease awarded by the Louisiana State Mineral Board be subsequently modified, cancelled or abrogated due to the existence of conflicting leases, operating agreements, private claims or other future obligations or conditions which may affect all or any portion of the leased Tract, it shall not relieve the Lessee of the obligation to pay any bonus due thereon to the Louisiana State Mineral Board, nor shall the Louisiana State Mineral Board be obligated to refund any consideration paid by the Lessor prior to such modification, cancellation, or abrogation, including, but not limited to, bonuses, rentals and royalties.

NOTE: The State of Louisiana does hereby reserve, and this lease shall be subject to, the imprescriptible right of surface use in the nature of a servitude in favor of the Department of Natural Resources, including its

Offices and Commissions, for the sole purpose of implementing, constructing, servicing and maintaining approved coastal zone management and/or restoration projects. Utilization of any and all rights derived under this lease by the mineral lessee, its agents, successors or assigns, shall not interfere with nor hinder the reasonable surface use by the Department of Natural Resources, its Offices or Commissions, as herein above reserved.

NOTE: The Department of Wildlife and Fisheries has designated certain areas in the coastal waters of the State of Louisiana as Oyster Seed Bed Areas. The exact location of those Seed Bed Areas must be obtained from the Department of Wildlife and Fisheries and any work done under a mineral lease from the State of Louisiana may necessarily be conducted in conformity with the rules and regulations promulgated by the said Department of Wildlife and Fisheries for Oyster Seed Bed Areas.

Applicant: HAROLD J. ANDERSON, INC.

Bidder	Cash Payment	Price/ Acre	Rental	Oil	Gas	Other

**Legend**

09040046

Blocks

Active\_Leases

SL 14217

SL 14217

SL 17965

SL 20004

SL 14560

SL 14216

BS0034

P.O.B.

BRETON SOUND AREA

GULF OF MEXICO

PLAQUEMINES PARISH



**TRACT 40919 - Portion of Block 48, Breton Sound Area, Plaquemines Parish, Louisiana**

All of the lands now or formerly constituting the beds and bottoms of all water bodies of every nature and description as to which title is vested in the State of Louisiana, together with all islands arising therein and other lands formed by accretion or by reliction, where allowed by law, excepting tax adjudicated lands, and not presently under mineral lease on April 8, 2009, situated in Plaquemines Parish, Louisiana, and more particularly described as follows: Beginning at the Northwest corner of Block 48, Breton Sound Area, having Coordinates of X = 2,635,350.00 and Y = 307,580.00; thence East 7,375.00 feet along the North line of said Block 48 to a point having Coordinates of X = 2,642,725.00 and Y = 307,580.00; thence South 14,750.00 feet to a point on the South line of said Block 48 having Coordinates of X = 2,642,725.00 and Y = 292,830.00; thence West 7,375.00 feet along the South line of said Block 48 to its Southwest corner having Coordinates of X = 2,635,350.00 and Y = 292,830.00; thence North 14,750.00 feet along the West line of said Block 48 to the point of beginning, containing approximately **2,497.27 acres**, all as more particularly outlined on a plat on file in the Office of Mineral Resources, Department of Natural Resources. All bearings, distances and coordinates are based on Louisiana Coordinate System of 1927, (North or South Zone), where applicable.

NOTE: The above description of the Tract nominated for lease has been provided and corrected, where required, exclusively by the nomination party. Any mineral lease selected from this Tract and awarded by the Louisiana State Mineral Board shall be without warranty of any kind, either express, implied, or statutory, including, but not limited to, the implied warranties of merchantability and fitness for a particular purpose. Should the mineral lease awarded by the Louisiana State Mineral Board be subsequently modified, cancelled or abrogated due to the existence of conflicting leases, operating agreements, private claims or other future obligations or conditions which may affect all or any portion of the leased Tract, it shall not relieve the Lessee of the obligation to pay any bonus due thereon to the Louisiana State Mineral Board, nor shall the Louisiana State Mineral Board be obligated to refund any consideration paid by the Lessor prior to such modification, cancellation, or abrogation, including, but not limited to, bonuses, rentals and royalties.

NOTE: The State of Louisiana does hereby reserve, and this lease shall be subject to, the imprescriptible right of surface use in the nature of a servitude in favor of the Department of Natural Resources, including its Offices and Commissions, for the sole purpose of implementing, constructing, servicing and maintaining approved coastal zone management and/or restoration projects. Utilization of any and all rights derived under this lease by the mineral lessee, its agents, successors or assigns, shall not interfere with nor hinder the reasonable surface use by the Department of Natural Resources, its Offices or Commissions, as herein above reserved.



NOTE: The Department of Wildlife and Fisheries has designated certain areas in the coastal waters of the State of Louisiana as Oyster Seed Bed Areas. The exact location of those Seed Bed Areas must be obtained from the Department of Wildlife and Fisheries and any work done under a mineral lease from the State of Louisiana may necessarily be conducted in conformity with the rules and regulations promulgated by the said Department of Wildlife and Fisheries for Oyster Seed Bed Areas.

Applicant: HAROLD J. ANDERSON, INC.

Bidder	Cash Payment	Price/ Acre	Rental	Oil	Gas	Other



**TRACT 40920 - Portion of Block 48, Breton Sound Area, Plaquemines Parish, Louisiana**

All of the lands now or formerly constituting the beds and bottoms of all water bodies of every nature and description as to which title is vested in the State of Louisiana, together with all islands arising therein and other lands formed by accretion or by reliction, where allowed by law, excepting tax adjudicated lands, and not presently under mineral lease on April 8, 2009, situated in Plaquemines Parish, Louisiana, and more particularly described as follows: Beginning at a point on the North line of Block 48, Breton Sound Area, having Coordinates of X = 2,642,725.00 and Y = 307,580.00; thence East 7,375.00 feet along the North line of said Block 48 to its Northeast corner having Coordinates of X = 2,650,100.00 and Y = 307,580.00; thence South 14,750.00 feet along the East line of said Block 48 to its Southeast corner having Coordinates of X = 2,650,100.00 and Y = 292,830.00; thence West 7,375.00 feet along the South line of said Block 48 to a point having Coordinates of X = 2,642,725.00 and Y = 292,830.00; thence North 14,750.00 feet to the point of beginning, containing approximately **2,497.27 acres**, all as more particularly outlined on a plat on file in the Office of Mineral Resources, Department of Natural Resources. All bearings, distances and coordinates are based on Louisiana Coordinate System of 1927, (North or South Zone), where applicable.

NOTE: The above description of the Tract nominated for lease has been provided and corrected, where required, exclusively by the nomination party. Any mineral lease selected from this Tract and awarded by the Louisiana State Mineral Board shall be without warranty of any kind, either express, implied, or statutory, including, but not limited to, the implied warranties of merchantability and fitness for a particular purpose. Should the mineral lease awarded by the Louisiana State Mineral Board be subsequently modified, cancelled or abrogated due to the existence of conflicting leases, operating agreements, private claims or other future obligations or conditions which may affect all or any portion of the leased Tract, it shall not relieve the Lessee of the obligation to pay any bonus due thereon to the Louisiana State Mineral Board, nor shall the Louisiana State Mineral Board be obligated to refund any consideration paid by the Lessor prior to such modification, cancellation, or abrogation, including, but not limited to, bonuses, rentals and royalties.

NOTE: The State of Louisiana does hereby reserve, and this lease shall be subject to, the imprescriptible right of surface use in the nature of a servitude in favor of the Department of Natural Resources, including its Offices and Commissions, for the sole purpose of implementing, constructing, servicing and maintaining approved coastal zone management and/or restoration projects. Utilization of any and all rights derived under this lease by the mineral lessee, its agents, successors or assigns, shall not interfere with nor hinder the reasonable surface use by the Department of Natural Resources, its Offices or Commissions, as herein above reserved.

NOTE: The Department of Wildlife and Fisheries has designated certain areas in the coastal waters of the State of Louisiana as Oyster Seed Bed Areas. The exact location of those Seed Bed Areas must be obtained from the Department of Wildlife and Fisheries and any work done under a mineral lease from the State of Louisiana may necessarily be conducted in conformity with the rules and regulations promulgated by the said Department of Wildlife and Fisheries for Oyster Seed Bed Areas.

Applicant: HAROLD J. ANDERSON, INC.

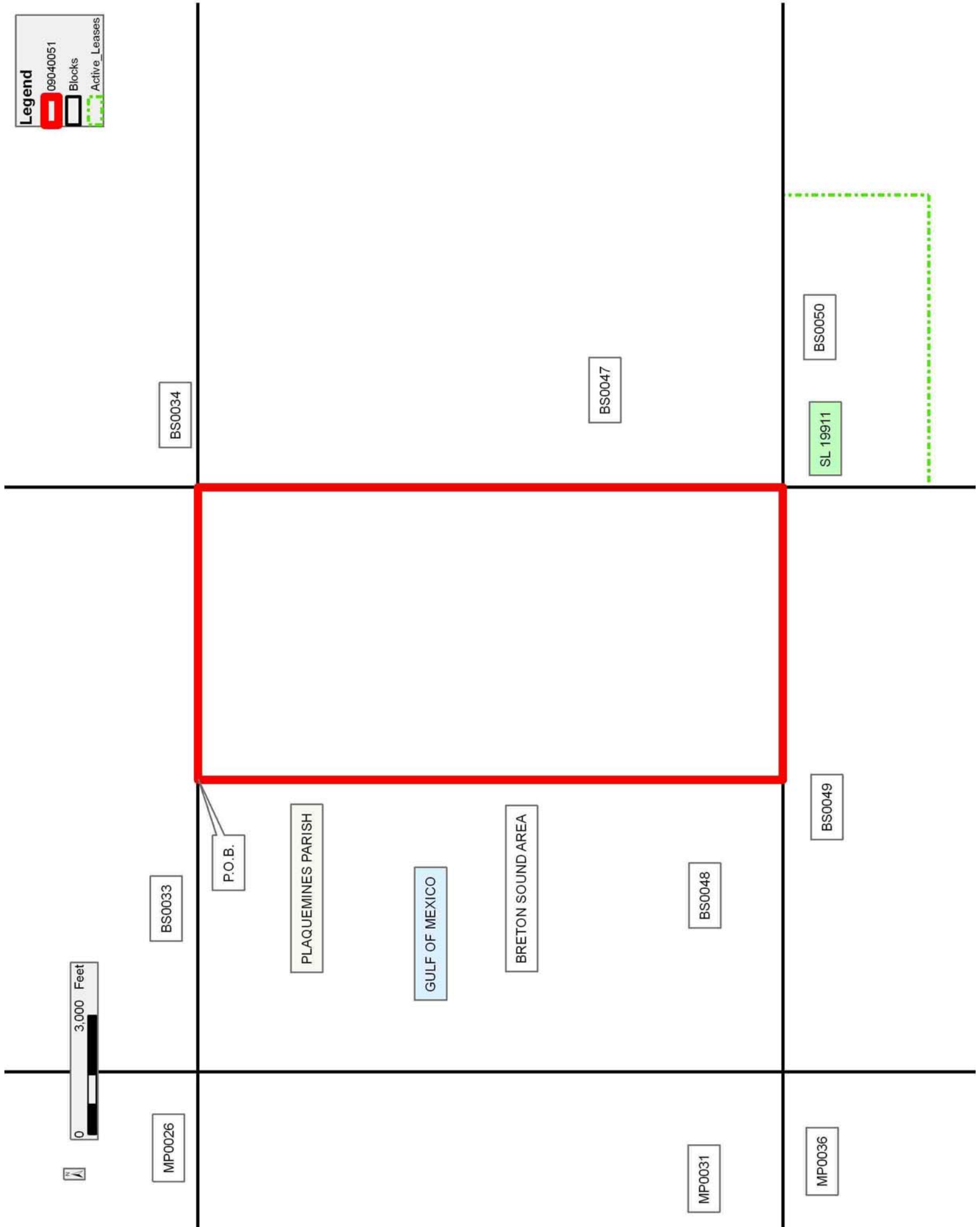
Bidder	Cash Payment	Price/ Acre	Rental	Oil	Gas	Other

**Legend**

09040051

Blocks

Active\_Leases



**TRACT 40921 - Portion of Blocks 34, and 47, Breton Sound Area, Plaquemines Parish, Louisiana**

All of the lands now or formerly constituting the beds and bottoms of all water bodies of every nature and description as to which title is vested in the State of Louisiana, together with all islands arising therein and other lands formed by accretion or by reliction, where allowed by law, excepting tax adjudicated lands, and not presently under mineral lease on April 8, 2009, situated in Plaquemines Parish, Louisiana, and more particularly described as follows: Beginning at a point on the West line of Block 34, Breton Sound Area, also being the Southwest corner of State Lease No. 14560, as amended, having Coordinates of X = 2,650,100.00 and Y = 308,575.79; thence East 4,590.00 feet along the Southern boundary of said State Lease No. 14560 to its Southeast corner, also being a point on the Western boundary of State Lease No. 20004, having Coordinates of X = 2,654,690.00 and Y = 308,575.79; thence South 995.79 feet along the Western boundary of said State Lease No. 20004 to its Southwest corner, also being the Northwest corner of State Lease No. 20006 having Coordinates of X = 2,654,690.00 and Y = 307,580.00; thence along the boundary of said State Lease No. 20006 the following courses: South 25 degrees 54 minutes 34 seconds East 4,925.04 feet, and East 633.00 feet to a point having Coordinates of X = 2,657,475.00 and Y = 303,150.00; thence South 10,320.00 feet to a point on the South line of Block 47, Breton Sound Area having Coordinates of X = 2,657,475.00 and Y = 292,830.00; thence West 7,375.00 feet along the South line of said Block 47 to its Southwest corner having Coordinates of X = 2,650,100.00 and Y = 292,830.00; thence North 14,750.00 feet along the West line of said Block 47 to its Northwest corner, also being the Southwest corner of said Block 34 having Coordinates of X = 2,650,100.00 and Y = 307,580.00; thence North 995.79 feet along the West line of said Block 34 to the point of beginning, containing approximately **2,428.40 acres**, all as more particularly outlined on a plat on file in the Office of Mineral Resources, Department of Natural Resources. All bearings, distances and coordinates are based on Louisiana Coordinate System of 1927, (North or South Zone), where applicable.

NOTE: The above description of the Tract nominated for lease has been provided and corrected, where required, exclusively by the nomination party. Any mineral lease selected from this Tract and awarded by the Louisiana State Mineral Board shall be without warranty of any kind, either express, implied, or statutory, including, but not limited to, the implied warranties of merchantability and fitness for a particular purpose. Should the mineral lease awarded by the Louisiana State Mineral Board be subsequently modified, cancelled or abrogated due to the existence of conflicting leases, operating agreements, private claims or other future obligations or conditions which may affect all or any portion of the leased Tract, it shall not relieve the Lessee of the obligation to pay any bonus due thereon to the Louisiana State Mineral Board, nor shall the Louisiana State Mineral Board be obligated to refund any consideration

paid by the Lessor prior to such modification, cancellation, or abrogation, including, but not limited to, bonuses, rentals and royalties.

NOTE: The State of Louisiana does hereby reserve, and this lease shall be subject to, the imprescriptible right of surface use in the nature of a servitude in favor of the Department of Natural Resources, including its Offices and Commissions, for the sole purpose of implementing, constructing, servicing and maintaining approved coastal zone management and/or restoration projects. Utilization of any and all rights derived under this lease by the mineral lessee, its agents, successors or assigns, shall not interfere with nor hinder the reasonable surface use by the Department of Natural Resources, its Offices or Commissions, as herein above reserved.

NOTE: The Department of Wildlife and Fisheries has designated certain areas in the coastal waters of the State of Louisiana as Oyster Seed Bed Areas. The exact location of those Seed Bed Areas must be obtained from the Department of Wildlife and Fisheries and any work done under a mineral lease from the State of Louisiana may necessarily be conducted in conformity with the rules and regulations promulgated by the said Department of Wildlife and Fisheries for Oyster Seed Bed Areas.

Applicant: HAROLD J. ANDERSON, INC.

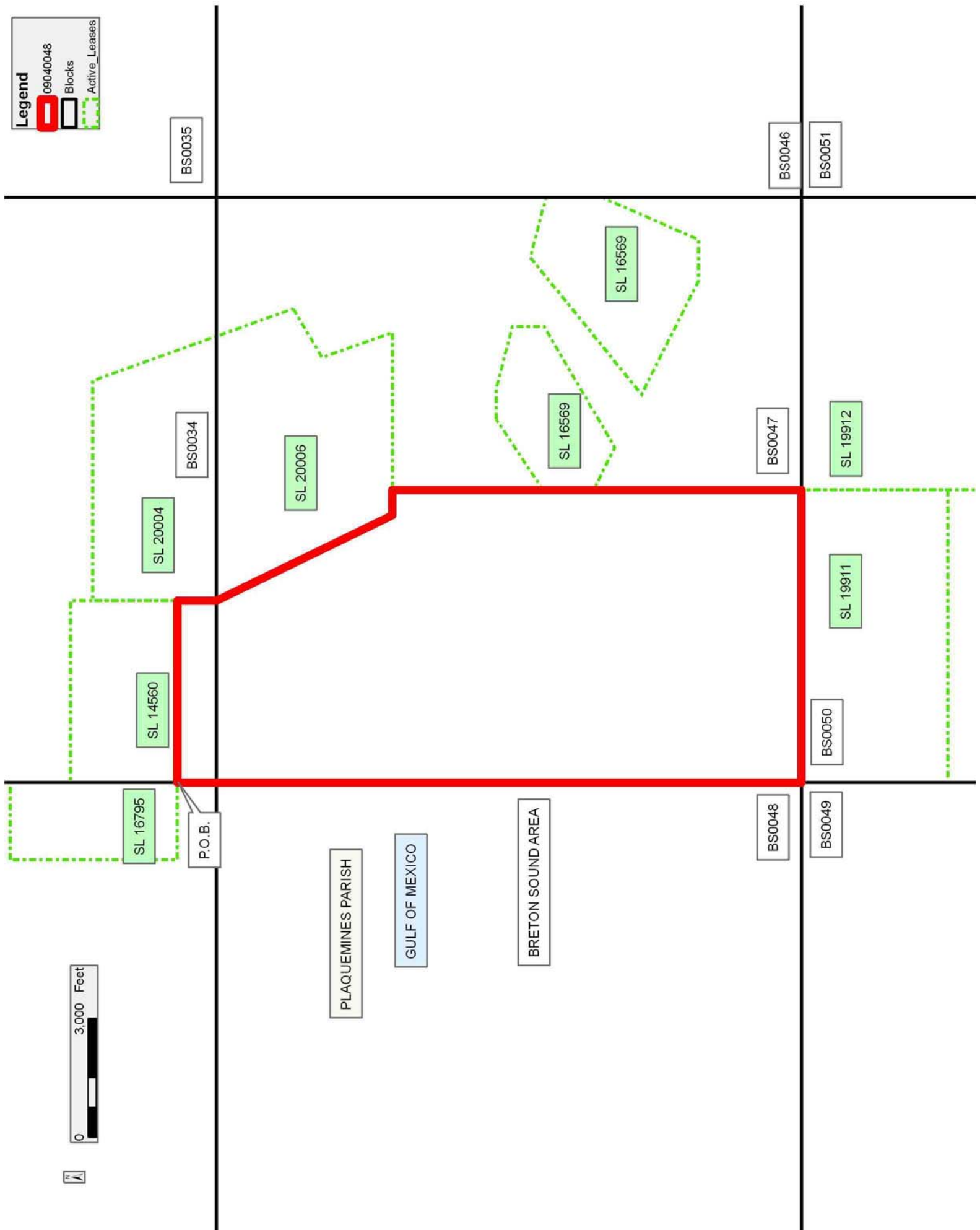
Bidder	Cash Payment	Price/ Acre	Rental	Oil	Gas	Other

**Legend**

09040048

Blocks

Active\_Leases





**TRACT 40922 - Portion of Block 47, Breton Sound Area, Plaquemines Parish, Louisiana**

All of the lands now or formerly constituting the beds and bottoms of all water bodies of every nature and description as to which title is vested in the State of Louisiana, together with all islands arising therein and other lands formed by accretion or by reliction, where allowed by law, excepting tax adjudicated lands, and not presently under mineral lease on April 8, 2009, situated in Plaquemines Parish, Louisiana, and more particularly described as follows: Beginning at a point on the North line of Block 47, Breton Sound Area, also being the Northeast corner of State Lease No. 20006 having Coordinates of X = 2,661,355.35 and Y = 307,580.00; thence East 3,494.65 feet along the North line of said Block 47 to its Northeast corner having Coordinates of X = 2,664,850.00 and Y = 307,580.00; thence South 8,300.00 feet along the East line of said Block 47 to the Northeast corner of State Lease No. 16569, as amended, having Coordinates of X = 2,664,850.00 and Y = 299,280.00; thence along the boundary of said State Lease No. 16569 the following courses: North 75 degrees 24 minutes 12 seconds West 1,560.09 feet, South 50 degrees 54 minutes 23 seconds West 4,448.56 feet, South 63 degrees 19 minutes 35 seconds East 3,203.23 feet, East 1,040.01 feet and North 23 degrees 40 minutes 37 seconds East 2,639.57 feet to its Easternmost Southeast corner, also being a point on the East line of said Block 47 having Coordinates of X = 2,664,850.00 and Y = 297,847.38; thence South 5,017.38 feet along the East line of said Block 47 to its Southeast corner having Coordinates of X = 2,664,850.00 and Y = 292,830.00; thence West 7,375.00 feet along the South line of said Block 47 to a point having Coordinates of X = 2,657,475.00 and Y = 292,830.00; thence North 5,250.00 feet to the Southwest corner of State Lease No. 16569, as amended, having Coordinates of X = 2,657,475.00 and Y = 298,080.00; thence along the boundary of said State Lease No. 16569 the following courses: South 63 degrees 19 minutes 34 seconds East 1,204.00 feet, North 59 degrees 36 minutes 34 seconds East 3,532.92 feet, North 800.00 feet, North 75 degrees 24 minutes 12 seconds West 1,600.00 feet; thence West 795.00 feet and South 56 degrees 27 minutes 32 seconds West 2,135.60 feet to its Westernmost Northwest corner having Coordinates of X = 2,657,475.00 and Y = 299,350.01; thence North 3,799.99 feet to a point on the Southern boundary of said State Lease No. 20006 having Coordinates of X = 2,657,475.00 and Y = 303,150.00; thence along the boundary of said State Lease No. 20006 the following courses: East 3,971.77 feet, North 19 degrees 30 minutes 22 seconds West 1,883.08 feet, North 59 degrees 27 minutes 59 seconds East 1,428.02 feet and North 19 degrees 44 minutes 50 seconds West 2,050.06 feet to the point of beginning, containing approximately **1,623.75 acres**, all as more particularly outlined on a plat on file in the Office of Mineral Resources, Department of Natural Resources. All bearings, distances and coordinates are based on Louisiana Coordinate System of 1927, (North or South Zone), where applicable.

NOTE: The above description of the Tract nominated for lease has been provided and corrected, where required, exclusively by the nomination

party. Any mineral lease selected from this Tract and awarded by the Louisiana State Mineral Board shall be without warranty of any kind, either express, implied, or statutory, including, but not limited to, the implied warranties of merchantability and fitness for a particular purpose. Should the mineral lease awarded by the Louisiana State Mineral Board be subsequently modified, cancelled or abrogated due to the existence of conflicting leases, operating agreements, private claims or other future obligations or conditions which may affect all or any portion of the leased Tract, it shall not relieve the Lessee of the obligation to pay any bonus due thereon to the Louisiana State Mineral Board, nor shall the Louisiana State Mineral Board be obligated to refund any consideration paid by the Lessor prior to such modification, cancellation, or abrogation, including, but not limited to, bonuses, rentals and royalties.

NOTE: The State of Louisiana does hereby reserve, and this lease shall be subject to, the imprescriptible right of surface use in the nature of a servitude in favor of the Department of Natural Resources, including its Offices and Commissions, for the sole purpose of implementing, constructing, servicing and maintaining approved coastal zone management and/or restoration projects. Utilization of any and all rights derived under this lease by the mineral lessee, its agents, successors or assigns, shall not interfere with nor hinder the reasonable surface use by the Department of Natural Resources, its Offices or Commissions, as herein above reserved.

NOTE: The Department of Wildlife and Fisheries has designated certain areas in the coastal waters of the State of Louisiana as Oyster Seed Bed Areas. The exact location of those Seed Bed Areas must be obtained from the Department of Wildlife and Fisheries and any work done under a mineral lease from the State of Louisiana may necessarily be conducted in conformity with the rules and regulations promulgated by the said Department of Wildlife and Fisheries for Oyster Seed Bed Areas.

Applicant: HAROLD J. ANDERSON, INC.

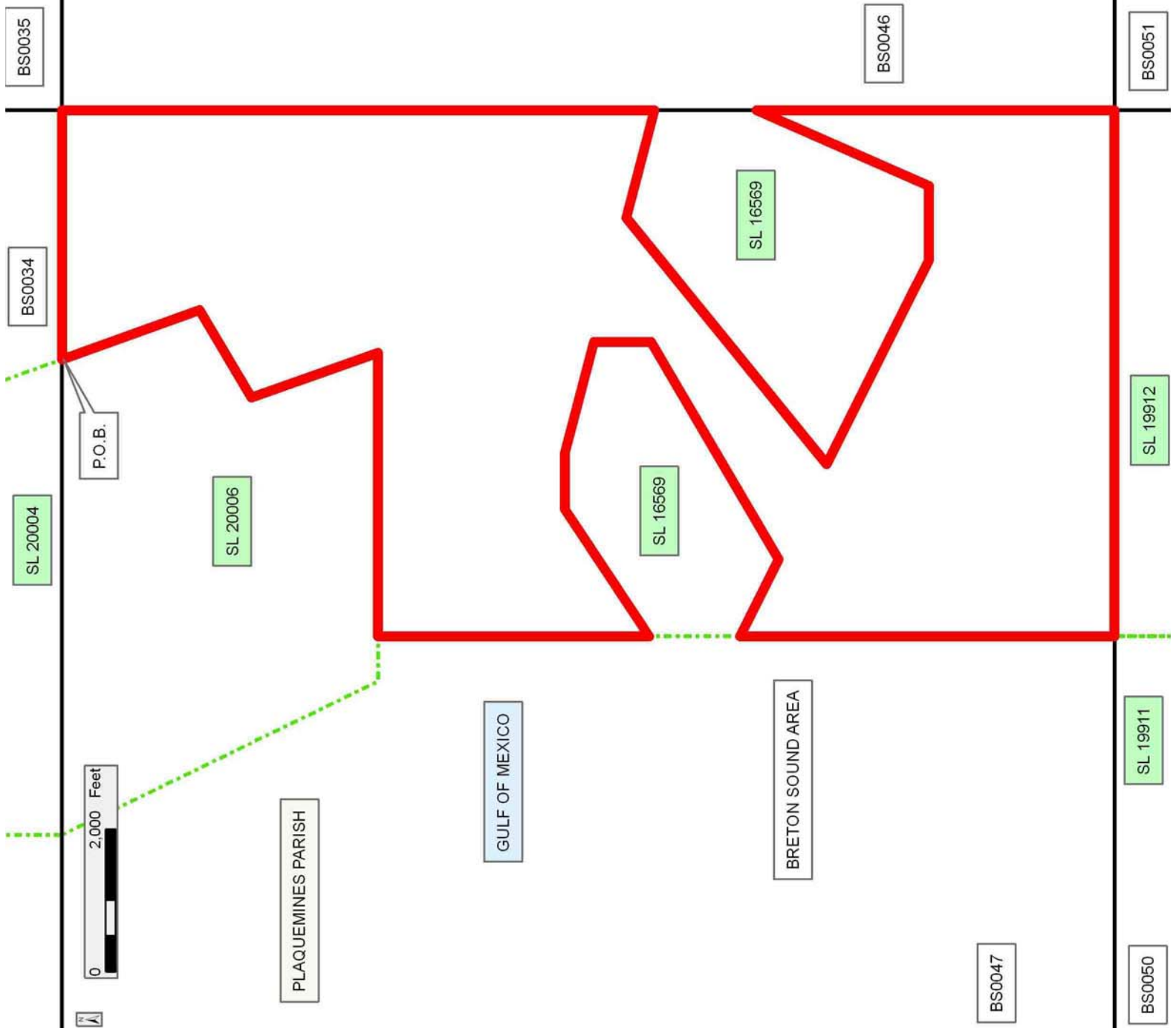
Bidder	Cash Payment	Price/ Acre	Rental	Oil	Gas	Other

**Legend**

09040049

Blocks

Active\_Leases



**TRACT 40923 - Jefferson and Plaquemines Parishes, Louisiana**

All of the lands now or formerly constituting the beds and bottoms of all water bodies of every nature and description as to which title is vested in the State of Louisiana, together with all islands arising therein and other lands formed by accretion or by reliction, where allowed by law, excepting tax adjudicated lands, and not presently under mineral lease on April 8, 2009, situated in Jefferson and Plaquemines Parishes, Louisiana, and more particularly described as follows: Beginning at a point having Coordinates of X = 2,432,455.54 and Y = 301,311.35; thence South 14,769.33 feet to a point having Coordinates of X = 2,432,455.54 and Y = 286,542.02; thence West 7,638.56 feet to the Southeast corner of State Lease No. 19045 having Coordinates of X = 2,424,817.02 and Y = 286,542.02; thence North 00 degrees 20 minutes 57 seconds East 4,271.90 feet along the East boundary of said State Lease No. 19045 to its Northeast corner, also being the Southeast corner of State Lease No. 19043 having Coordinates of X = 2,424,843.06 and Y = 290,813.83; thence North 00 degrees 20 minutes 57 seconds East 3,141.23 feet along the East boundary of said State Lease No. 19043 to the Southwest corner of State Lease No. 19379 having Coordinates of X = 2,424,862.21 and Y = 293,955.00; thence along the boundary of said State Lease No. 19379 the following courses: East 2,405.80 feet to its Southeast corner having Coordinates of X = 2,427,268.00 and Y = 293,955.00 and North 7,348.64 feet along the boundary of said State Lease No. 19379 to its Northeast corner having Coordinates of X = 2,427,268.00 and Y = 301,303.64; thence North 7.71 feet to a point having Coordinates of X = 2,427,268.00 and Y = 301,311.35; thence East 5,187.54 feet to the point of beginning, (This tract includes only waterbottoms claimed and owned by the state and specifically excludes any land which the state may claim or own and to which the mineral rights are vested in the state), **LESS AND EXCEPT** all of State Lease No. 16007 as amended, State Lease No. 16006 as amended, and State Lease No. 15858 as amended, that lies within the above described tract; these leases comprising the 10,400' RA SUA being more particularly described as follows: Commencing at the point of beginning of the above described nominated tract having Coordinates of X = 2,432,455.54 and Y = 301,311.35; thence South 22 degrees 21 minutes 18 seconds West 8,228.80 feet to the point of beginning of said 10,400' RA SUA having Coordinates of X = 2,429,325.78 and Y = 293,700.97; thence along the boundary of said 10,400' RA SUA the following courses: South 68 degrees 32 minutes 33 seconds East 2,387.08 feet to a point having Coordinates of X = 2,431,547.41 and Y = 292,827.75; Southeasterly along a curve to the right having a radius of 4,000.00 feet and a center at X = 2,427,673.35 and Y = 291,831.92 to a point having Coordinates of X = 2,431,623.62 and Y = 291,203.10; Southwesterly along a curve to the right having a radius of 1,686.00 feet and a center at X = 2,430,000.21 and Y = 291,658.22 to a point having Coordinates of X = 2,430,917.06 and Y = 290,243.31; Southwesterly along a curve to the right having a radius of 1,760.00 feet and a center at X = 2,429,853.93 and Y = 291,645.93 to a point having Coordinates of X = 2,429,925.34 and Y = 289,887.38; Northwesterly along a curve to the left having a radius of 6,740.00 feet and a center at X = 2,423,269.81 and Y = 288,823.68 to a point having Coordinates of X =

2,429,833.48 and Y = 290,355.29; Northwesterly along a curve to the right having a radius of 6,850.00 feet and a center at X = 2,436,504.25 and Y = 291,911.98 to a point having Coordinates of X = 2,429,667.06 and Y = 291,493.18; Northwesterly along a curve to the left having a radius of 16,210.00 feet and a center at X = 2,413,538.83 and Y = 289,867.09 to a point having Coordinates of X = 2,429,538.82 and Y = 292,467.91 and North 09 degrees 48 minutes 09 seconds West 1,251.33 feet to the point of beginning; the nominated tract containing approximately **1,405 acres**, all as more particularly outlined on a plat on file in the Office of Mineral Resources, Department of Natural Resources. All bearings, distances and coordinates are based on Louisiana Coordinate System of 1927, (North or South Zone), where applicable.

NOTE: The above description of the Tract nominated for lease has been provided and corrected, where required, exclusively by the nomination party. Any mineral lease selected from this Tract and awarded by the Louisiana State Mineral Board shall be without warranty of any kind, either express, implied, or statutory, including, but not limited to, the implied warranties of merchantability and fitness for a particular purpose. Should the mineral lease awarded by the Louisiana State Mineral Board be subsequently modified, cancelled or abrogated due to the existence of conflicting leases, operating agreements, private claims or other future obligations or conditions which may affect all or any portion of the leased Tract, it shall not relieve the Lessee of the obligation to pay any bonus due thereon to the Louisiana State Mineral Board, nor shall the Louisiana State Mineral Board be obligated to refund any consideration paid by the Lessor prior to such modification, cancellation, or abrogation, including, but not limited to, bonuses, rentals and royalties.

NOTE: The State of Louisiana does hereby reserve, and this lease shall be subject to, the imprescriptible right of surface use in the nature of a servitude in favor of the Department of Natural Resources, including its Offices and Commissions, for the sole purpose of implementing, constructing, servicing and maintaining approved coastal zone management and/or restoration projects. Utilization of any and all rights derived under this lease by the mineral lessee, its agents, successors or assigns, shall not interfere with nor hinder the reasonable surface use by the Department of Natural Resources, its Offices or Commissions, as herein above reserved.

NOTE: The Department of Wildlife and Fisheries has designated certain areas in the coastal waters of the State of Louisiana as Oyster Seed Bed Areas. The exact location of those Seed Bed Areas must be obtained from the Department of Wildlife and Fisheries and any work done under a mineral lease from the State of Louisiana may necessarily be conducted in conformity with the rules and regulations promulgated by the said Department of Wildlife and Fisheries for Oyster Seed Bed Areas.

Applicant: ACADIAN LAND SERVICES, L.L.C.

Bidder	Cash Payment	Price/ Acre	Rental	Oil	Gas	Other

