

TRACT 40894 - Caldwell Parish, Louisiana

All of the lands now or formerly constituting the beds and bottoms of all water bodies of every nature and description as to which title is vested in the State of Louisiana, together with all islands arising therein and other lands formed by accretion or by reliction, where allowed by law, excepting tax adjudicated lands, and not presently under mineral lease on April 8, 2009, situated in Caldwell Parish, Louisiana, and more particularly described as follows: Beginning at a point having Coordinates of X = 2,109,561.84 and Y = 569,640.00; thence East 13,183.85 feet to a point having Coordinates of X = 2,122,745.70 and Y = 569,640.00; thence South 13,132.20 feet to a point having Coordinates of X = 2,122,745.70 and Y = 556,507.80; thence South 22 degrees 12 minutes 48 seconds West 17,258.12 feet to a point having Coordinates of X = 2,116,221.15 and Y = 540,530.54; thence North 32 degrees 04 minutes 01 seconds West 12,543.20 feet to a point having Coordinates of X = 2,109,561.84 and Y = 551,160.00; thence North 18,480.00 feet to the point of beginning, containing approximately **406 acres**, all as more particularly outlined on a plat on file in the Office of Mineral Resources, Department of Natural Resources. All bearings, distances and coordinates are based on Louisiana Coordinate System of 1927, (North or South Zone), where applicable.

NOTE: The above description of the Tract nominated for lease has been provided and corrected, where required, exclusively by the nomination party. Any mineral lease selected from this Tract and awarded by the Louisiana State Mineral Board shall be without warranty of any kind, either express, implied, or statutory, including, but not limited to, the implied warranties of merchantability and fitness for a particular purpose. Should the mineral lease awarded by the Louisiana State Mineral Board be subsequently modified, cancelled or abrogated due to the existence of conflicting leases, operating agreements, private claims or other future obligations or conditions which may affect all or any portion of the leased Tract, it shall not relieve the Lessee of the obligation to pay any bonus due thereon to the Louisiana State Mineral Board, nor shall the Louisiana State Mineral Board be obligated to refund any consideration paid by the Lessor prior to such modification, cancellation, or abrogation, including, but not limited to, bonuses, rentals and royalties.

Applicant: HEMPCO ENERGY RESOURCES

Bidder	Cash Payment	Price/ Acre	Rental	Oil	Gas	Other

Legend
00040001
Active_Leases
DO-002 004

T15N - R4E

T14N - R4E

AO 0287

OUACHITA RIVER

T15N - R3E

P.O.B.

CALDWELL PARISH

T14N - R3E

0 2000 4000 8000 Feet

TRACT 40895 - Caldwell and Richland Parishes, Louisiana

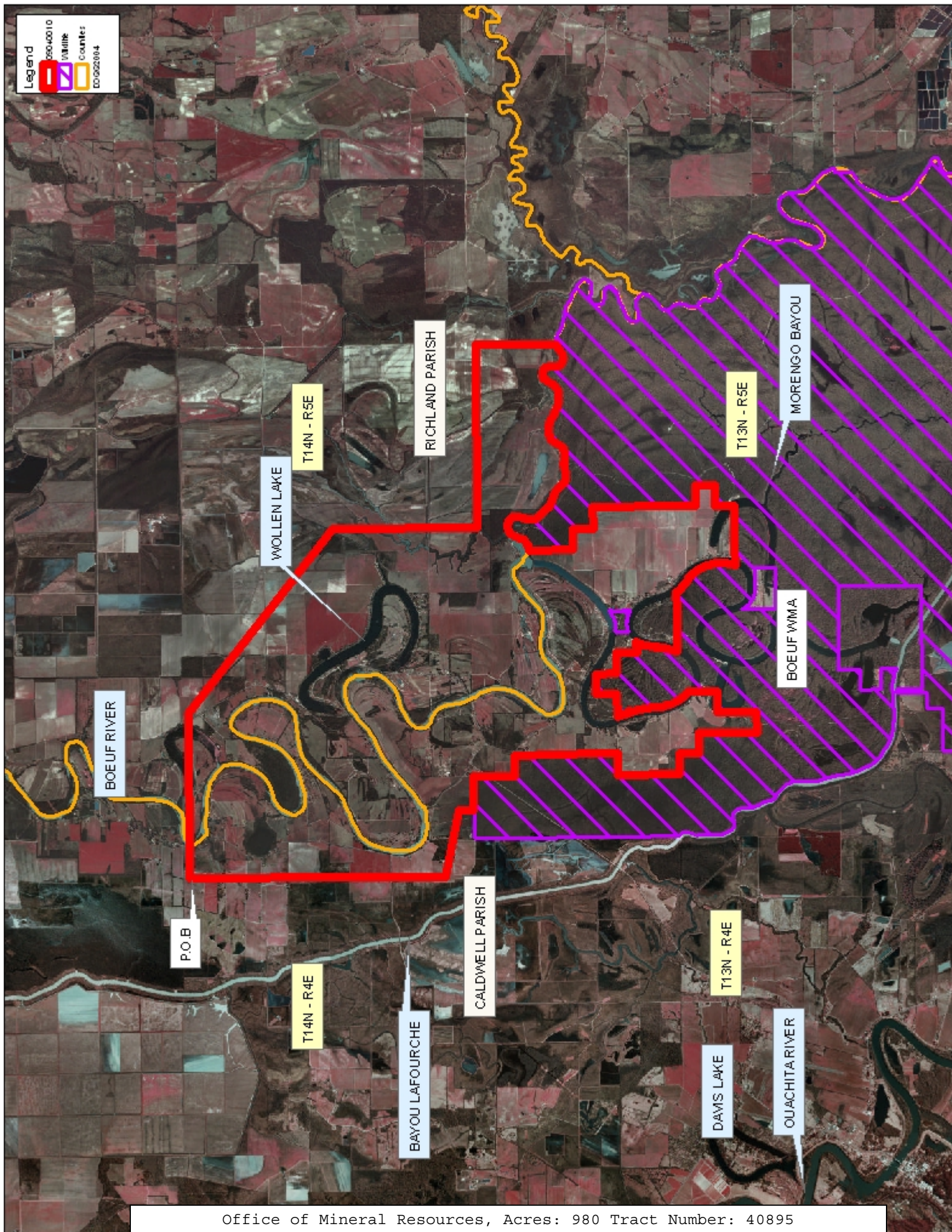
All of the lands now or formerly constituting the beds and bottoms of all water bodies of every nature and description as to which title is vested in the State of Louisiana, together with all islands arising therein and other lands formed by accretion or by reliction, where allowed by law, excepting tax adjudicated lands, and not presently under mineral lease on April 8, 2009, situated in Caldwell and Richland Parishes, Louisiana, and more particularly described as follows: Beginning at a point on the West boundary of State Lease No. 18789 having Coordinates of X = 2,150,176.00 and Y = 569,640.00; thence East 10,564.00 feet to a point having Coordinates of X = 2,160,740.00 and Y = 569,640.00; thence South 51 degrees 45 minutes 01 seconds East 14,925.13 feet to a point having Coordinates of X = 2,172,461.00 and Y = 560,400.00; thence South 9,240.00 feet to a point having Coordinates of X = 2,172,461.00 and Y = 551,160.00; thence East 11,721.00 feet to a point on the West boundary of State Lease No. 18924 having Coordinates of X = 2,184,182.00 and Y = 551,160.00; thence South approximately 5,129 feet along the West boundary of said State Lease No. 18924 to a point of intersection with the boundary of the Boeuf Wildlife Management Area having a Coordinate of X = 2,184,182.00; thence Westerly, Southerly, Westerly, Northerly, Westerly, Southerly, Westerly, Northerly and Westerly along the meanders of the boundary of said Boeuf Wildlife Management Area to a point of intersection with a North-South line having a Coordinate of X = 2,154,466.82; thence North approximately 966 feet along said line to a point having Coordinates of X = 2,154,466.82 and Y = 552,407.04; thence North 78 degrees 45 minutes 25 seconds West 4,374.78 feet to a point on the East boundary of State Lease No. 18790 having Coordinates of X = 2,150,176.00 and Y = 553,260.00; thence North 6,138.00 feet along the East boundary of said State Lease No. 18790 to its Northeast corner, also being the Southeast corner of said State Lease No. 18789 having Coordinates of X = 2,150,176.00 and Y = 559,398.00; thence North 10,242.00 feet along the East boundary of said State Lease No. 18789 to the point of beginning, **LESS AND EXCEPT** that portion, if any, of the Boeuf Wildlife Management Area which may lie within the above described tract, containing approximately **980 acres**, all as more particularly outlined on a plat on file in the Office of Mineral Resources, Department of Natural Resources. All bearings, distances and coordinates are based on Louisiana Coordinate System of 1927, (North or South Zone), where applicable.

NOTE: The above description of the Tract nominated for lease has been provided and corrected, where required, exclusively by the nomination party. Any mineral lease selected from this Tract and awarded by the Louisiana State Mineral Board shall be without warranty of any kind, either express, implied, or statutory, including, but not limited to, the implied warranties of merchantability and fitness for a particular purpose. Should the mineral lease awarded by the Louisiana State Mineral Board be subsequently modified, cancelled or abrogated due to the existence of conflicting leases, operating agreements, private claims or other future obligations or conditions which may affect all or any portion

of the leased Tract, it shall not relieve the Lessee of the obligation to pay any bonus due thereon to the Louisiana State Mineral Board, nor shall the Louisiana State Mineral Board be obligated to refund any consideration paid by the Lessor prior to such modification, cancellation, or abrogation, including, but not limited to, bonuses, rentals and royalties.

Applicant: HEMPCO ENERGY RESOURCES

Bidder	Cash Payment	Price/ Acre	Rental	Oil	Gas	Other



TRACT 40896 - Red River Parish, Louisiana

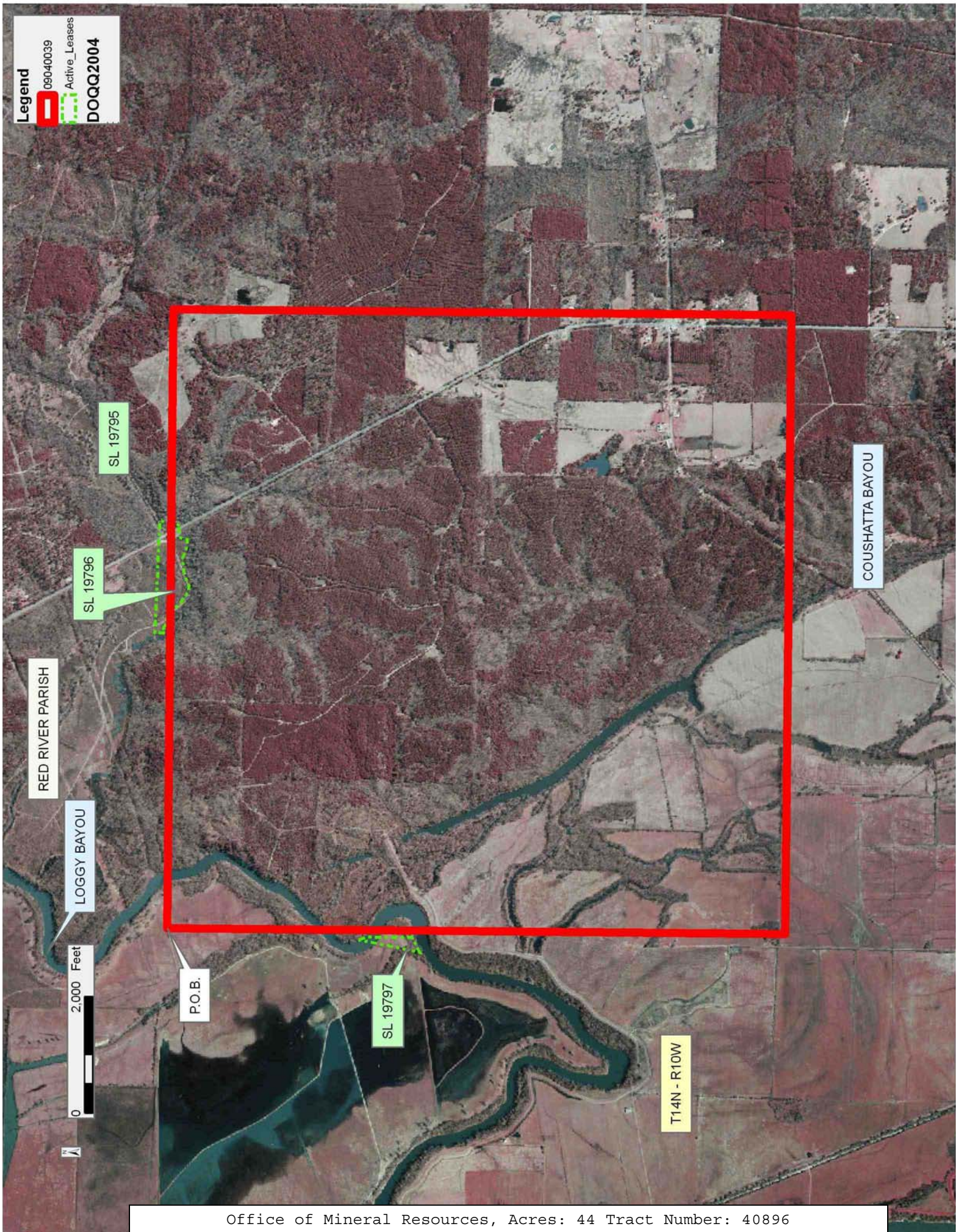
All of the lands now or formerly constituting the beds and bottoms of all water bodies of every nature and description as to which title is vested in the State of Louisiana, together with all islands arising therein and other lands formed by accretion or by reliction, where allowed by law, excepting tax adjudicated lands, and not presently under mineral lease on April 8, 2009, situated in Red River Parish, Louisiana, and more particularly described as follows: Beginning at a point having Coordinates of X = 1,714,200.00 and Y = 561,300.00; thence East 10,600.00 feet to a point having Coordinates of X = 1,724,800.00 and Y = 561,300.00; thence South 10,580.00 feet to a point having Coordinates of X = 1,724,800.00 and Y = 550,720.00; thence West 10,600.00 feet to a point having Coordinates of X = 1,714,200.00 and Y = 550,720.00; thence North 10,580.00 feet to the point of beginning, (This lease includes only waterbottoms claimed and owned by the state and specifically excludes any land which the state may claim or own and to which the mineral rights are vested in the state), containing approximately **44 acres**, all as more particularly outlined on a plat on file in the Office of Mineral Resources, Department of Natural Resources. All bearings, distances and coordinates are based on Louisiana Coordinate System of 1927, (North or South Zone), where applicable.

NOTE: The above description of the Tract nominated for lease has been provided and corrected, where required, exclusively by the nomination party. Any mineral lease selected from this Tract and awarded by the Louisiana State Mineral Board shall be without warranty of any kind, either express, implied, or statutory, including, but not limited to, the implied warranties of merchantability and fitness for a particular purpose. Should the mineral lease awarded by the Louisiana State Mineral Board be subsequently modified, cancelled or abrogated due to the existence of conflicting leases, operating agreements, private claims or other future obligations or conditions which may affect all or any portion of the leased Tract, it shall not relieve the Lessee of the obligation to pay any bonus due thereon to the Louisiana State Mineral Board, nor shall the Louisiana State Mineral Board be obligated to refund any consideration paid by the Lessor prior to such modification, cancellation, or abrogation, including, but not limited to, bonuses, rentals and royalties.

Bidder	Cash Payment	Price/ Acre	Rental	Oil	Gas	Other

Applicant: THEOPHILUS OIL, GAS & LAND SERVICES, LLC

Legend
09040039
Active_Leases
DOQQ2004



TRACT 40897 - Caldwell Parish, Louisiana

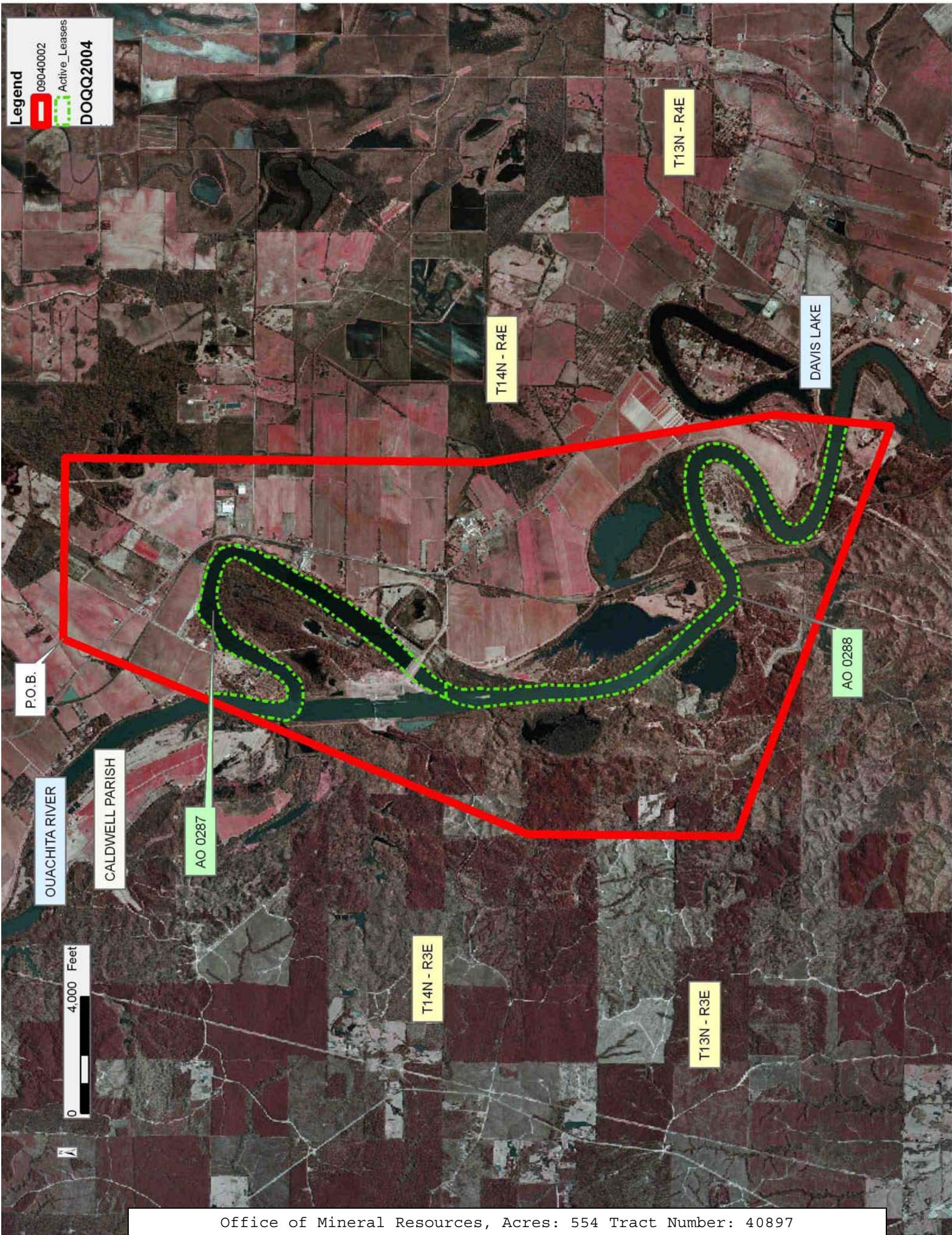
All of the lands now or formerly constituting the beds and bottoms of all water bodies of every nature and description as to which title is vested in the State of Louisiana, together with all islands arising therein and other lands formed by accretion or by reliction, where allowed by law, excepting tax adjudicated lands, and not presently under mineral lease on April 8, 2009, situated in Caldwell Parish, Louisiana, and more particularly described as follows: Beginning at a point having Coordinates of X = 2,122,745.70 and Y = 556,507.80; thence East 6,191.40 feet to a point having Coordinates of X = 2,128,937.09 and Y = 556,507.80; thence South 14,441.36 feet to a point having Coordinates of X = 2,128,937.09 and Y = 542,066.44; thence South 10 degrees 00 minutes 00 seconds East 10,000.00 feet to a point having Coordinates of X = 2,130,673.57 and Y = 532,218.37; thence South 05 degrees 08 minutes 10 seconds West 3,988.32 feet to a point having Coordinates of X = 2,130,316.54 and Y = 528,246.06; thence North 70 degrees 00 minutes 00 seconds West 15,000.00 feet to a point having Coordinates of X = 2,116,221.15 and Y = 533,376.36; thence North 7,154.18 feet to a point having Coordinates of X = 2,116,221.15 and Y = 540,530.54; thence North 22 degrees 12 minutes 48 seconds East 17,258.12 feet to the point of beginning, **LESS AND EXCEPT** all of Operating Agreement No. 287 being the claimable waterbottoms within the boundaries of the unit designated as RVRTN CSNG1, created by Office of Conservation Order No. 1494, effective December 1, 2005, INsofar AND ONLY INsofar as to those specific subsurface intervals defined by said Order No. 1494 as the Reynolds Coal Seam Zone, being the coal seam natural bearing zone encountered between the depths of 1,850 feet and 3,200 feet (electric log measurements, less and except all non-coal intervals encountered within such zone) in the Mark V Petroleum Company-VUC; Smith No. 1 Well (SN:229459) located in Section 43, Township 14 North, Range 4 East, in the Riverton Field, Caldwell Parish, **ALSO LESS AND EXCEPT** all of Operating Agreement No. 288 being the claimable waterbottoms within the boundaries of the unit designated as RVRTN CSNG2, created by Office of Conservation Order No. 1494, effective December 1, 2005, INsofar AND ONLY INsofar as to those specific subsurface intervals defined by said Order No. 1494 as the Reynolds Coal Seam Zone, being the coal seam natural bearing zone encountered between the depths of 1,850 feet and 3,200 feet (electric log measurements, less and except all non-coal intervals encountered within such zone) in the Mark V Petroleum Company-VUC; Smith No. 1 Well (SN:229459) located in Section 43, Township 14 North, Range 4 East, in the Riverton Field, Caldwell Parish; (Above described tract includes only waterbottoms claimed and owned by the state and specifically excludes any land which the state may claim or own and to which the mineral rights are vested in the state), containing approximately **554 acres**, all as more particularly outlined on a plat on file in the Office of Mineral Resources, Department of Natural Resources. All bearings, distances and coordinates are based on Louisiana Coordinate System of 1927, (North or South Zone), where applicable.

NOTE: The above description of the Tract nominated for lease has been provided and corrected, where required, exclusively by the nomination party. Any mineral lease selected from this Tract and awarded by the Louisiana State Mineral Board shall be without warranty of any kind, either express, implied, or statutory, including, but not limited to, the implied warranties of merchantability and fitness for a particular purpose. Should the mineral lease awarded by the Louisiana State Mineral Board be subsequently modified, cancelled or abrogated due to the existence of conflicting leases, operating agreements, private claims or other future obligations or conditions which may affect all or any portion of the leased Tract, it shall not relieve the Lessee of the obligation to pay any bonus due thereon to the Louisiana State Mineral Board, nor shall the Louisiana State Mineral Board be obligated to refund any consideration paid by the Lessor prior to such modification, cancellation, or abrogation, including, but not limited to, bonuses, rentals and royalties.

Applicant: HEMPCO ENERGY RESOURCES

Bidder	Cash Payment	Price/ Acre	Rental	Oil	Gas	Other

Legend
09040002
Active_Leases
DOQQ2004



TRACT 40898 - Red River Parish, Louisiana

All of the lands now or formerly constituting the beds and bottoms of all water bodies of every nature and description as to which title is vested in the State of Louisiana, together with all islands arising therein and other lands formed by accretion or by reliction, where allowed by law, excepting tax adjudicated lands, and not presently under mineral lease on April 8, 2009, situated in Red River Parish, Louisiana, and more particularly described as follows: Beginning at a point having Coordinates of X = 1,714,200.00 and Y = 550,720.00; thence East 10,600.00 feet to a point having Coordinates of X = 1,724,800.00 and Y = 550,720.00; thence South 10,585.00 feet to a point having Coordinates of X = 1,724,800.00 and Y = 540,135.00; thence West 16,245.00 feet to a point on the East boundary of State Lease No. 19830 having Coordinates of X = 1,708,555.00 and Y = 540,135.00; thence North 707.00 feet along the East boundary of said State Lease No. 19830 to its Northeast corner located on the South boundary of State Lease No. 19769 having Coordinates of X = 1,708,555.00 and Y = 540,842.00; thence along the South and East boundary of said State Lease No. 19769 the following courses and distances: East 402.21 feet to a corner having Coordinates of X = 1,708,957.21 and Y = 540,842.00 and North 4,558.00 feet to a point having Coordinates of X = 1,708,957.21 and Y = 545,400.00; thence East 5,242.79 feet to a point having Coordinates of X = 1,714,200.00 and Y = 545,400.00; thence North 5,320.00 feet to the point of beginning, containing approximately **25 acres**, all as more particularly outlined on a plat on file in the Office of Mineral Resources, Department of Natural Resources. All bearings, distances and coordinates are based on Louisiana Coordinate System of 1927, (North or South Zone), where applicable.

NOTE: The above description of the Tract nominated for lease has been provided and corrected, where required, exclusively by the nomination party. Any mineral lease selected from this Tract and awarded by the Louisiana State Mineral Board shall be without warranty of any kind, either express, implied, or statutory, including, but not limited to, the implied warranties of merchantability and fitness for a particular purpose. Should the mineral lease awarded by the Louisiana State Mineral Board be subsequently modified, cancelled or abrogated due to the existence of conflicting leases, operating agreements, private claims or other future obligations or conditions which may affect all or any portion of the leased Tract, it shall not relieve the Lessee of the obligation to pay any bonus due thereon to the Louisiana State Mineral Board, nor shall the Louisiana State Mineral Board be obligated to refund any consideration paid by the Lessor prior to such modification, cancellation, or abrogation, including, but not limited to, bonuses, rentals and royalties.

Applicant: THEOPHILUS OIL, GAS & LAND SERVICES, LLC

Bidder	Cash Payment	Price/ Acre	Rental	Oil	Gas	Other

Legend
09040040
Active_Leases
DOQQ2004

T14N - R10W

T13N - R10W

RED RIVER PARISH

COUSHATTA BAYOU

P.O.B.

0 2,000 Feet

RED RIVER

SL 19769

SL 19830

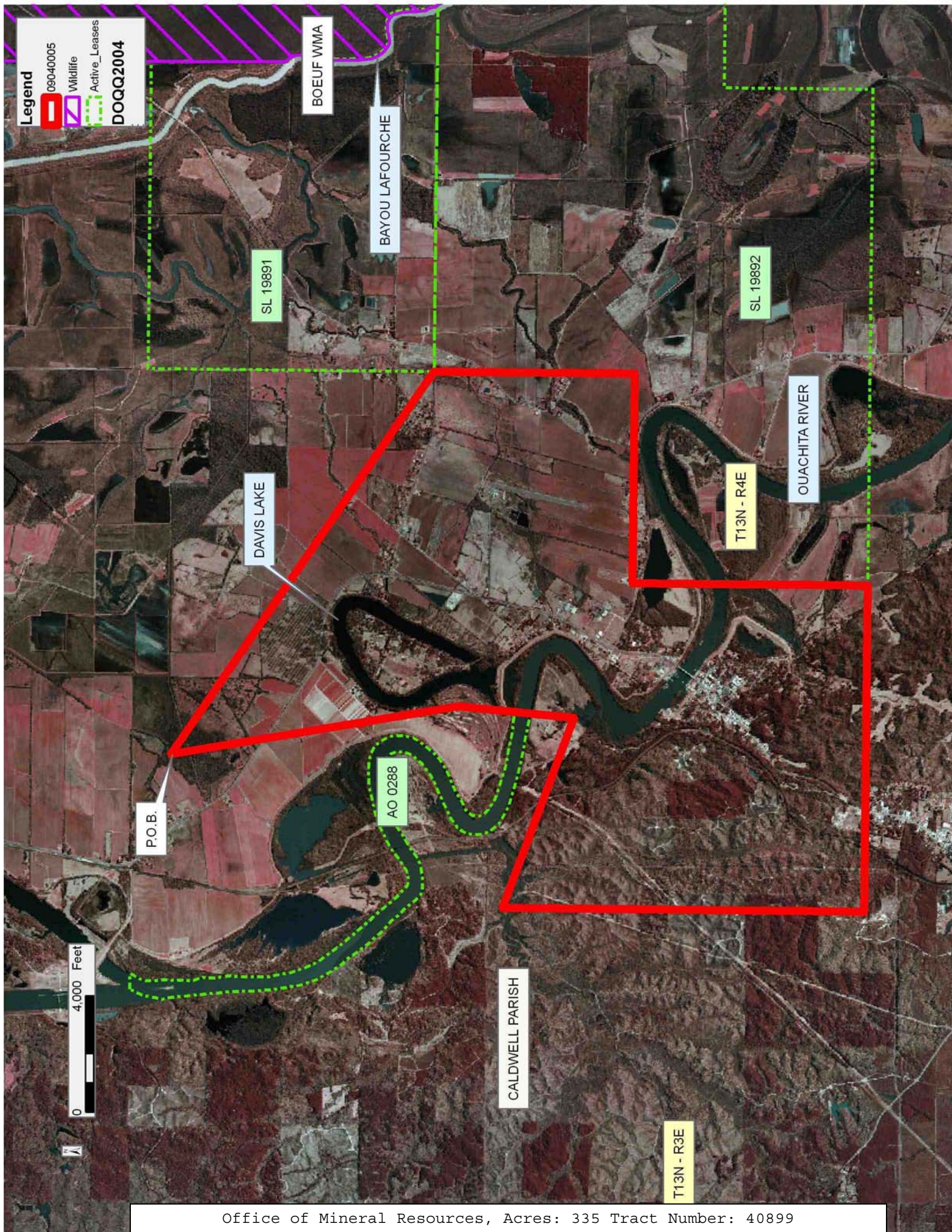
TRACT 40899 - Caldwell Parish, Louisiana

All of the lands now or formerly constituting the beds and bottoms of all water bodies of every nature and description as to which title is vested in the State of Louisiana, together with all islands arising therein and other lands formed by accretion or by reliction, where allowed by law, excepting tax adjudicated lands, and not presently under mineral lease on April 8, 2009, situated in Caldwell Parish, Louisiana, and more particularly described as follows: Beginning at a point having Coordinates of X = 2,128,937.09 and Y = 542,066.44; thence South 56 degrees 03 minutes 36 seconds East 15,932.42 feet to the Southwest corner of State Lease No. 19891, also being the Northernmost Northwest corner of State Lease No. 19892 having Coordinates of X = 2,142,155.00 and Y = 533,171.00; thence along the boundary of said State Lease No. 19892 the following courses: South 6,894.00 feet to a point having Coordinates of X = 2,142,155.00 and Y = 526,277.00; West 7,185.00 feet to a point having Coordinates of X = 2,134,970.00 and Y = 526,277.00 and South 8,072.00 feet to its Southwest corner having Coordinates of X = 2,134,970.00 and Y = 518,205.00; thence West 11,190.00 feet to a point having Coordinates of X = 2,123,780.00 and Y = 518,205.00; thence North 12,420.16 feet to a point having Coordinates of X = 2,123,780.00 and Y = 530,625.16; thence South 70 degrees 00 minutes 00 seconds East 6,956.04 feet to a point having Coordinates of X = 2,130,316.54 and Y = 528,246.06; thence North 05 degrees 08 minutes 10 seconds East 3,988.32 feet to a point having Coordinates of X = 2,130,673.57 and Y = 532,218.37; thence North 10 degrees 00 minutes 00 seconds West 10,000.00 feet to the point of beginning, (This tract includes only waterbottoms claimed and owned by the state and specifically excludes any land which the state may claim or own and to which the mineral rights are vested in the state), containing approximately **335 acres**, all as more particularly outlined on a plat on file in the Office of Mineral Resources, Department of Natural Resources. All bearings, distances and coordinates are based on Louisiana Coordinate System of 1927, (North or South Zone), where applicable.

NOTE: The above description of the Tract nominated for lease has been provided and corrected, where required, exclusively by the nomination party. Any mineral lease selected from this Tract and awarded by the Louisiana State Mineral Board shall be without warranty of any kind, either express, implied, or statutory, including, but not limited to, the implied warranties of merchantability and fitness for a particular purpose. Should the mineral lease awarded by the Louisiana State Mineral Board be subsequently modified, cancelled or abrogated due to the existence of conflicting leases, operating agreements, private claims or other future obligations or conditions which may affect all or any portion of the leased Tract, it shall not relieve the Lessee of the obligation to pay any bonus due thereon to the Louisiana State Mineral Board, nor shall the Louisiana State Mineral Board be obligated to refund any consideration paid by the Lessor prior to such modification, cancellation, or abrogation, including, but not limited to, bonuses, rentals and royalties.

Applicant: HEMPCO ENERGY RESOURCES

Bidder	Cash Payment	Price/ Acre	Rental	Oil	Gas	Other



TRACT 40900 - Red River Parish, Louisiana

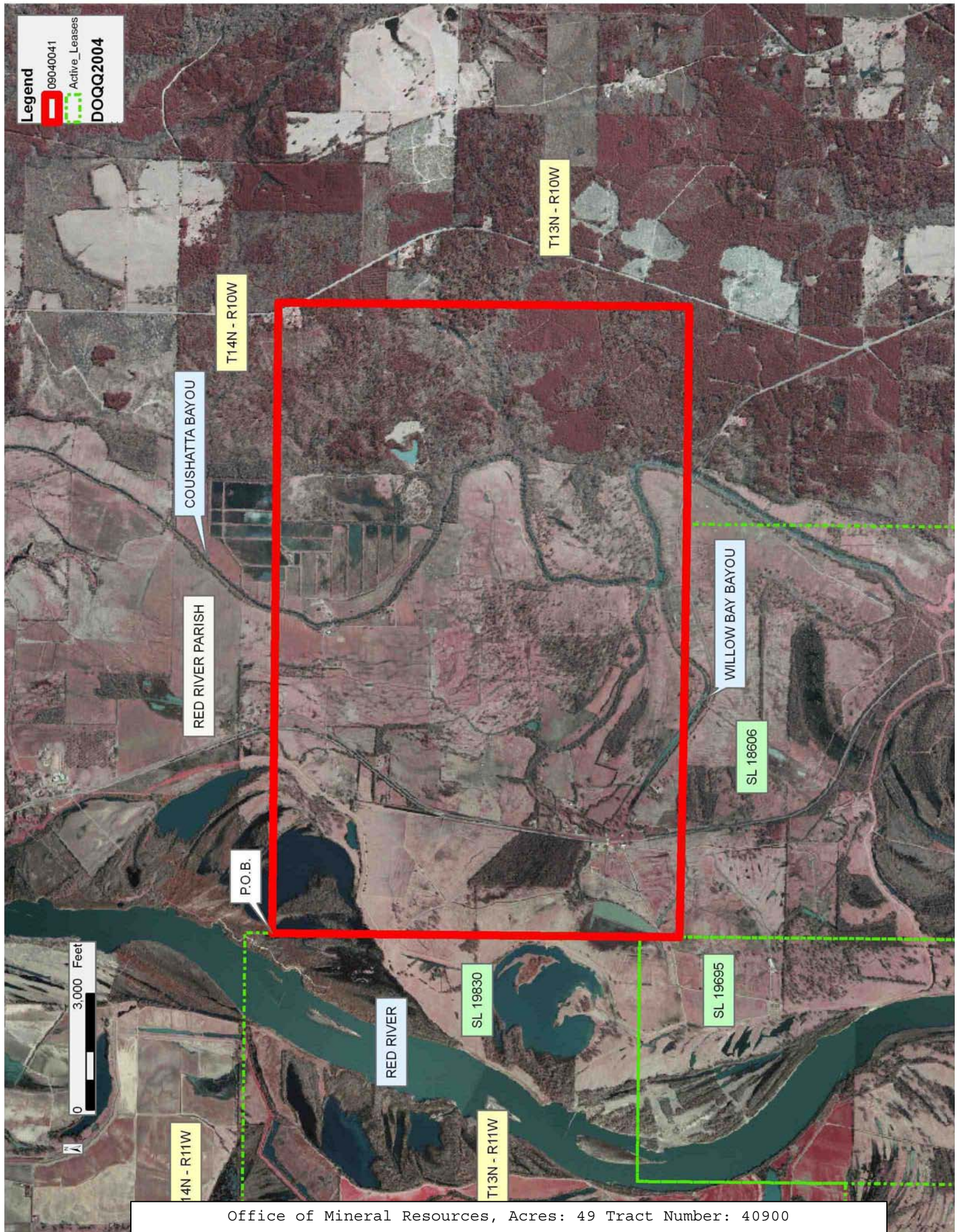
All of the lands now or formerly constituting the beds and bottoms of all water bodies of every nature and description as to which title is vested in the State of Louisiana, together with all islands arising therein and other lands formed by accretion or by reliction, where allowed by law, excepting tax adjudicated lands, and not presently under mineral lease on April 8, 2009, situated in Red River Parish, Louisiana, and more particularly described as follows: Beginning at a point located on the East boundary of State Lease No. 19830 having Coordinates of X = 1,708,555.00 and Y = 540,135.00; thence East 16,245.00 feet to a point having Coordinates of X = 1,724,800.00 and Y = 540,135.00; thence South 10,580.00 feet to a point having Coordinates of X = 1,724,800.00 and Y = 529,555.00; thence West 5,610.00 feet to the Northeast corner of State Lease No. 18606 having Coordinates of X = 1,719,190.00 and Y = 529,555.00; thence along the North boundary of said State Lease No. 18606 the following courses and distances: North 89 degrees 41 minutes 46 seconds West 5,280.07 feet to a corner having Coordinates of X = 1,713,910.00 and Y = 529,583.00 and North 89 degrees 20 minutes 12 seconds West 5,355.36 feet to its Northwest corner located on the East boundary of State Lease No. 19695 having Coordinates of X = 1,708,555.00 and Y = 529,645.00; thence North 1,030.14 feet along the East boundary of said State Lease No. 19695 to its Northeast corner, also being the Southeast corner of said State Lease No. 19830 having Coordinates of X = 1,708,555.00 and Y = 530,675.14; thence North 9,459.86 feet along the East boundary of said State Lease No. 19830 to the point of beginning, containing approximately **49 acres**, all as more particularly outlined on a plat on file in the Office of Mineral Resources, Department of Natural Resources. All bearings, distances and coordinates are based on Louisiana Coordinate System of 1927, (North or South Zone), where applicable.

NOTE: The above description of the Tract nominated for lease has been provided and corrected, where required, exclusively by the nomination party. Any mineral lease selected from this Tract and awarded by the Louisiana State Mineral Board shall be without warranty of any kind, either express, implied, or statutory, including, but not limited to, the implied warranties of merchantability and fitness for a particular purpose. Should the mineral lease awarded by the Louisiana State Mineral Board be subsequently modified, cancelled or abrogated due to the existence of conflicting leases, operating agreements, private claims or other future obligations or conditions which may affect all or any portion of the leased Tract, it shall not relieve the Lessee of the obligation to pay any bonus due thereon to the Louisiana State Mineral Board, nor shall the Louisiana State Mineral Board be obligated to refund any consideration paid by the Lessor prior to such modification, cancellation, or abrogation, including, but not limited to, bonuses, rentals and royalties.

Applicant: THEOPHILUS OIL, GAS & LAND SERVICES, LLC

Bidder	Cash Payment	Price/ Acre	Rental	Oil	Gas	Other

Legend
09040041
Active_Leases
DOQQ2004



TRACT 40901 - Caldwell Parish, Louisiana

All of the lands now or formerly constituting the beds and bottoms of all water bodies of every nature and description as to which title is vested in the State of Louisiana, together with all islands arising therein and other lands formed by accretion or by reliction, where allowed by law, excepting tax adjudicated lands, and not presently under mineral lease on April 8, 2009, situated in Caldwell Parish, Louisiana, and more particularly described as follows: Beginning at a point said to be on the boundary of the Boeuf Wildlife Management Area having Coordinates of X = 2,167,238.69 and Y = 532,091.44; thence Northerly, Southeasterly, Southerly and Westerly along the meanders of the boundary of said Boeuf Wildlife Management Area back to the point of beginning, **LESS AND EXCEPT** that portion, if any, of the Boeuf Wildlife Management Area which may lie within the above described tract, containing approximately **7 acres**, all as more particularly outlined on a plat on file in the Office of Mineral Resources, Department of Natural Resources. All bearings, distances and coordinates are based on Louisiana Coordinate System of 1927, (North or South Zone), where applicable.

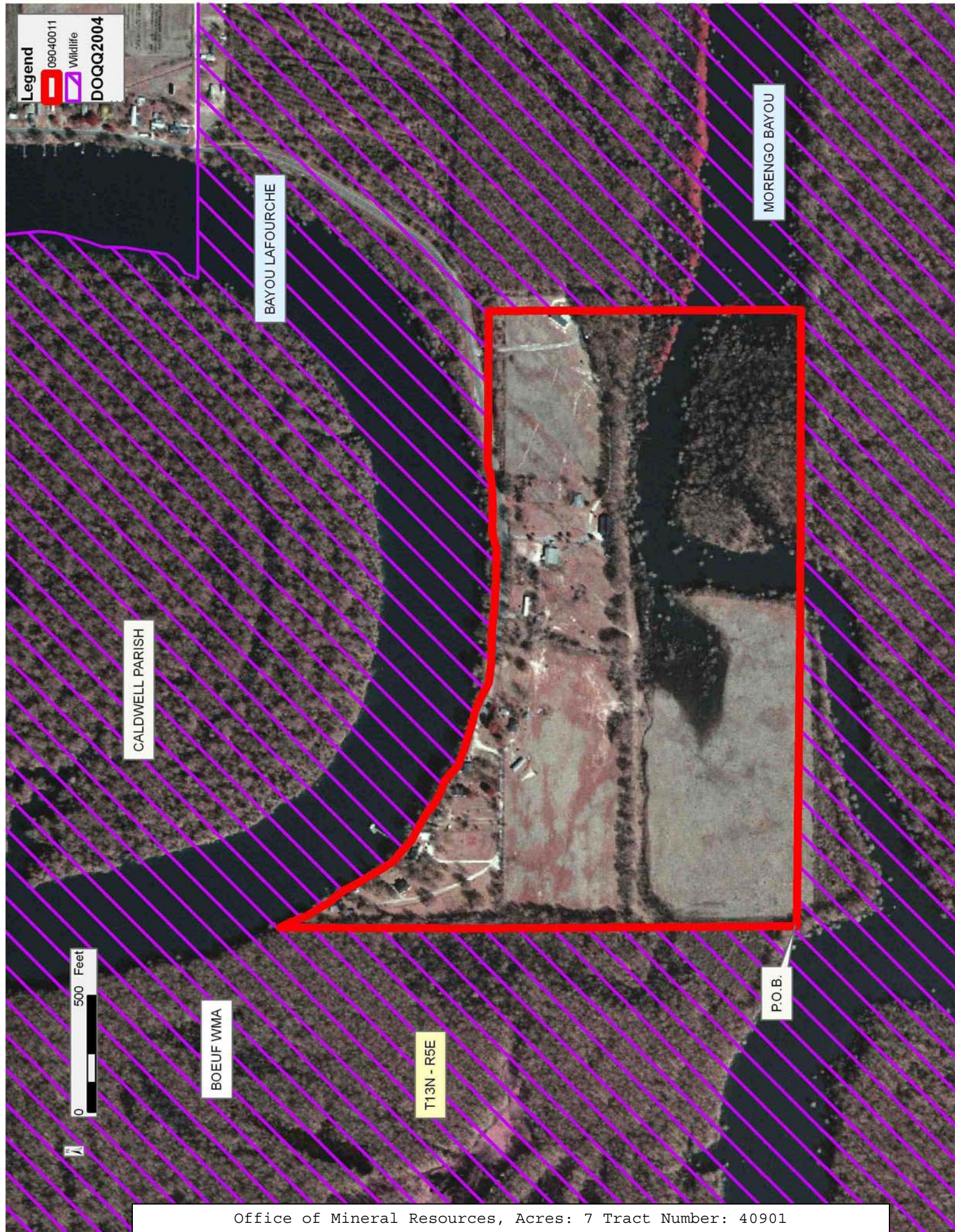
NOTE: The above description of the Tract nominated for lease has been provided and corrected, where required, exclusively by the nomination party. Any mineral lease selected from this Tract and awarded by the Louisiana State Mineral Board shall be without warranty of any kind, either express, implied, or statutory, including, but not limited to, the implied warranties of merchantability and fitness for a particular purpose. Should the mineral lease awarded by the Louisiana State Mineral Board be subsequently modified, cancelled or abrogated due to the existence of conflicting leases, operating agreements, private claims or other future obligations or conditions which may affect all or any portion of the leased Tract, it shall not relieve the Lessee of the obligation to pay any bonus due thereon to the Louisiana State Mineral Board, nor shall the Louisiana State Mineral Board be obligated to refund any consideration paid by the Lessor prior to such modification, cancellation, or abrogation, including, but not limited to, bonuses, rentals and royalties.

Applicant: HEMPCO ENERGY RESOURCES

Bidder	Cash Payment	Price/Acre	Rental	Oil	Gas	Other

Legend

09040011 Wildlife DOQQ2004



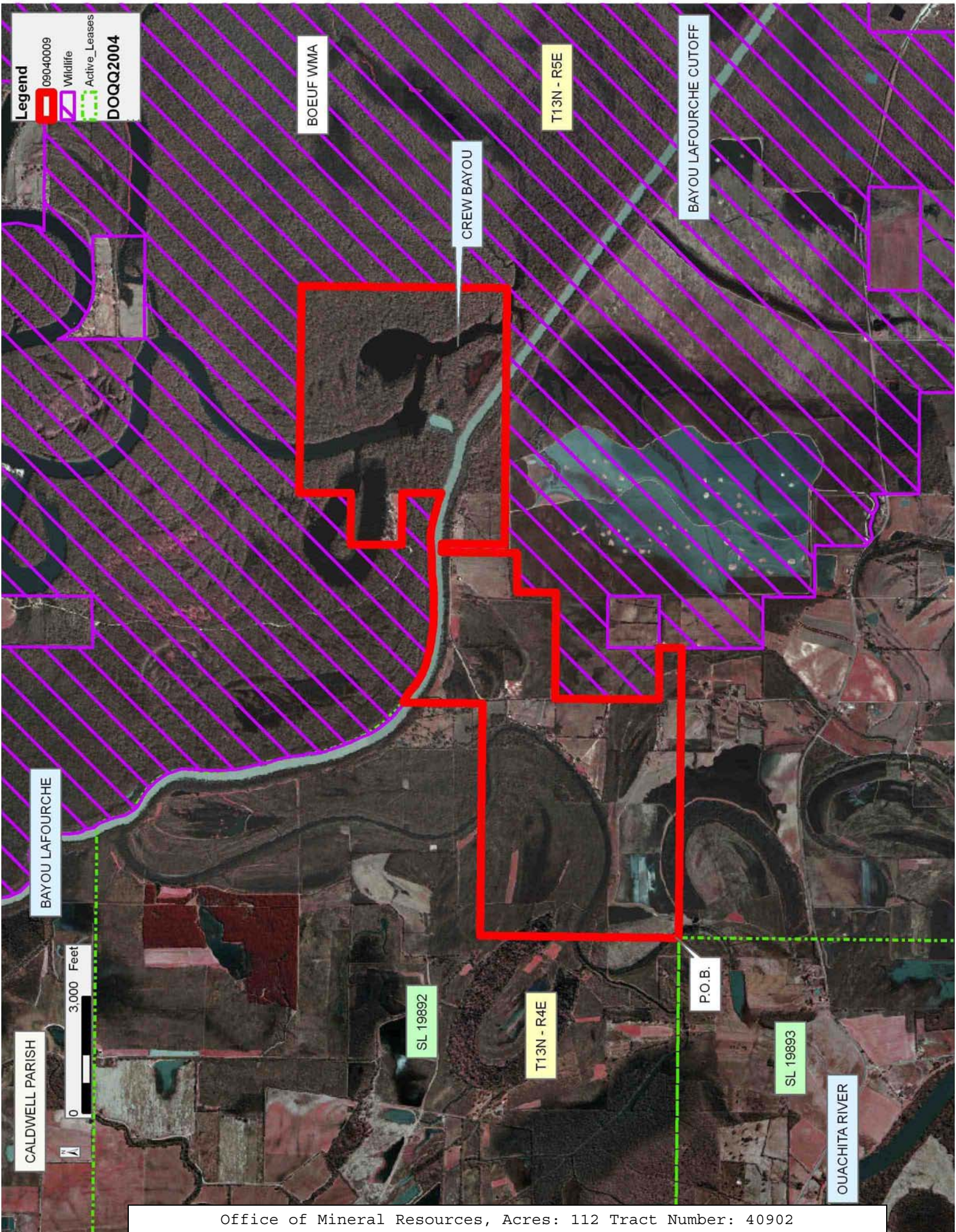
TRACT 40902 - Caldwell Parish, Louisiana

All of the lands now or formerly constituting the beds and bottoms of all water bodies of every nature and description as to which title is vested in the State of Louisiana, together with all islands arising therein and other lands formed by accretion or by reliction, where allowed by law, excepting tax adjudicated lands, and not presently under mineral lease on April 8, 2009, situated in Caldwell Parish, Louisiana, and more particularly described as follows: Beginning the Northeast corner of State Lease No. 19893, also being the Southernmost Southeast corner of State Lease No. 19892 having Coordinates of X = 2,151,997.00 and Y = 518,205.00; thence along the boundary of said State Lease No. 19892 the following courses: North 5,105.00 feet to a point having Coordinates of X = 2,151,997.00 and Y = 523,310.00; East 5,973.00 feet to a point having Coordinates of X = 2,157,970.00 and Y = 523,310.00 and North approximately 2,071 feet to a point of intersection with the boundary of the Boeuf Wildlife Management Area having a Coordinate of X = 2,157,970.00; thence Easterly, Southerly, Westerly, and Southerly along the meanders of the boundary of said Boeuf Wildlife Management Area to a point of intersection with an East-West line having a Coordinate of Y = 518,205.00; thence West approximately 7,449 feet along said line to the point of beginning, **LESS AND EXCEPT** that portion, if any, of the Boeuf Wildlife Management Area which may lie within the above described tract, containing approximately **112 acres**, all as more particularly outlined on a plat on file in the Office of Mineral Resources, Department of Natural Resources. All bearings, distances and coordinates are based on Louisiana Coordinate System of 1927, (North or South Zone), where applicable.

NOTE: The above description of the Tract nominated for lease has been provided and corrected, where required, exclusively by the nomination party. Any mineral lease selected from this Tract and awarded by the Louisiana State Mineral Board shall be without warranty of any kind, either express, implied, or statutory, including, but not limited to, the implied warranties of merchantability and fitness for a particular purpose. Should the mineral lease awarded by the Louisiana State Mineral Board be subsequently modified, cancelled or abrogated due to the existence of conflicting leases, operating agreements, private claims or other future obligations or conditions which may affect all or any portion of the leased Tract, it shall not relieve the Lessee of the obligation to pay any bonus due thereon to the Louisiana State Mineral Board, nor shall the Louisiana State Mineral Board be obligated to refund any consideration paid by the Lessor prior to such modification, cancellation, or abrogation, including, but not limited to, bonuses, rentals and royalties.

Applicant: HEMPCO ENERGY RESOURCES

Bidder	Cash Payment	Price/ Acre	Rental	Oil	Gas	Other



TRACT 40903 - Red River Parish, Louisiana

All of the lands now or formerly constituting the beds and bottoms of all water bodies of every nature and description as to which title is vested in the State of Louisiana, together with all islands arising therein and other lands formed by accretion or by reliction, where allowed by law, excepting tax adjudicated lands, and not presently under mineral lease on April 8, 2009, situated in Red River Parish, Louisiana, and more particularly described as follows: Beginning at a point on the East boundary of State Lease No. 18606 having Coordinates of X = 1,719,190.00 and Y = 525,310.00; thence East 7,845.00 feet to a point having Coordinates of X = 1,727,035.00 and Y = 525,310.00; thence South approximately 17,169 feet to a point on the North boundary of Operating Agreement AO 0158 having a Coordinate of X = 1,727,035.00; thence along the boundary of said Operating Agreement AO 0158 the following courses and distances: Westerly approximately 4,143 feet, Northerly approximately 1,014 feet and Westerly approximately 3,575 feet to its Westernmost Northwest corner; thence Westerly approximately 11,123 feet to the Northeast corner of State Lease No. 19837, also being the Southernmost Southeast corner of State Lease No. 19834, having Coordinates of X = 1,708,190.00 and Y = 509,163.70; thence North 4,290.73 feet along the East boundary of said State Lease No. 19834 to a point on the South boundary of State Lease No. 18503 having Coordinates of X = 1,708,190.00 and Y = 513,454.43; thence East 4,156.69 feet along the South boundary of said State Lease No. 18503 to its Southernmost Southeast corner, also being the Southernmost Southwest corner of State Lease No. 19999 having Coordinates of X = 1,712,346.69 and Y = 513,454.43; thence along the boundary of said State Lease No. 19999 the following courses and distances: East 6,600.00 feet to a corner having Coordinates of X = 1,718,946.69 and Y = 513,454.43 and North 00 degrees 35 minutes 52 seconds East 5,317.06 feet to its Northeast corner, also being a point on the South boundary of said State Lease No. 18606 having Coordinates of X = 1,719,002.16 and Y = 518,771.20; thence along the boundary of said State Lease No. 18606 the following courses and distances: East 187.84 feet to its Southernmost Southeast corner having Coordinates of X = 1,719,190.00 and Y = 518,771.20 and North 6,538.80 feet to the point of beginning, **LESS AND EXCEPT** all that portion of Operating Agreement AO 0242 which lies within the above described tract, **ALSO LESS AND EXCEPT** that portion, if any, of Operating Agreement AO 0158 which may lie within the above described tract, containing approximately **127 acres**, all as more particularly outlined on a plat on file in the Office of Mineral Resources, Department of Natural Resources. All bearings, distances and coordinates are based on Louisiana Coordinate System of 1927, (North or South Zone), where applicable.

NOTE: The above description of the Tract nominated for lease has been provided and corrected, where required, exclusively by the nomination party. Any mineral lease selected from this Tract and awarded by the Louisiana State Mineral Board shall be without warranty of any kind, either express, implied, or statutory, including, but not limited to, the implied warranties of merchantability and fitness for a particular

purpose. Should the mineral lease awarded by the Louisiana State Mineral Board be subsequently modified, cancelled or abrogated due to the existence of conflicting leases, operating agreements, private claims or other future obligations or conditions which may affect all or any portion of the leased Tract, it shall not relieve the Lessee of the obligation to pay any bonus due thereon to the Louisiana State Mineral Board, nor shall the Louisiana State Mineral Board be obligated to refund any consideration paid by the Lessor prior to such modification, cancellation, or abrogation, including, but not limited to, bonuses, rentals and royalties.

Applicant: THEOPHILUS OIL, GAS & LAND SERVICES, LLC

Bidder	Cash Payment	Price/ Acre	Rental	Oil	Gas	Other

