

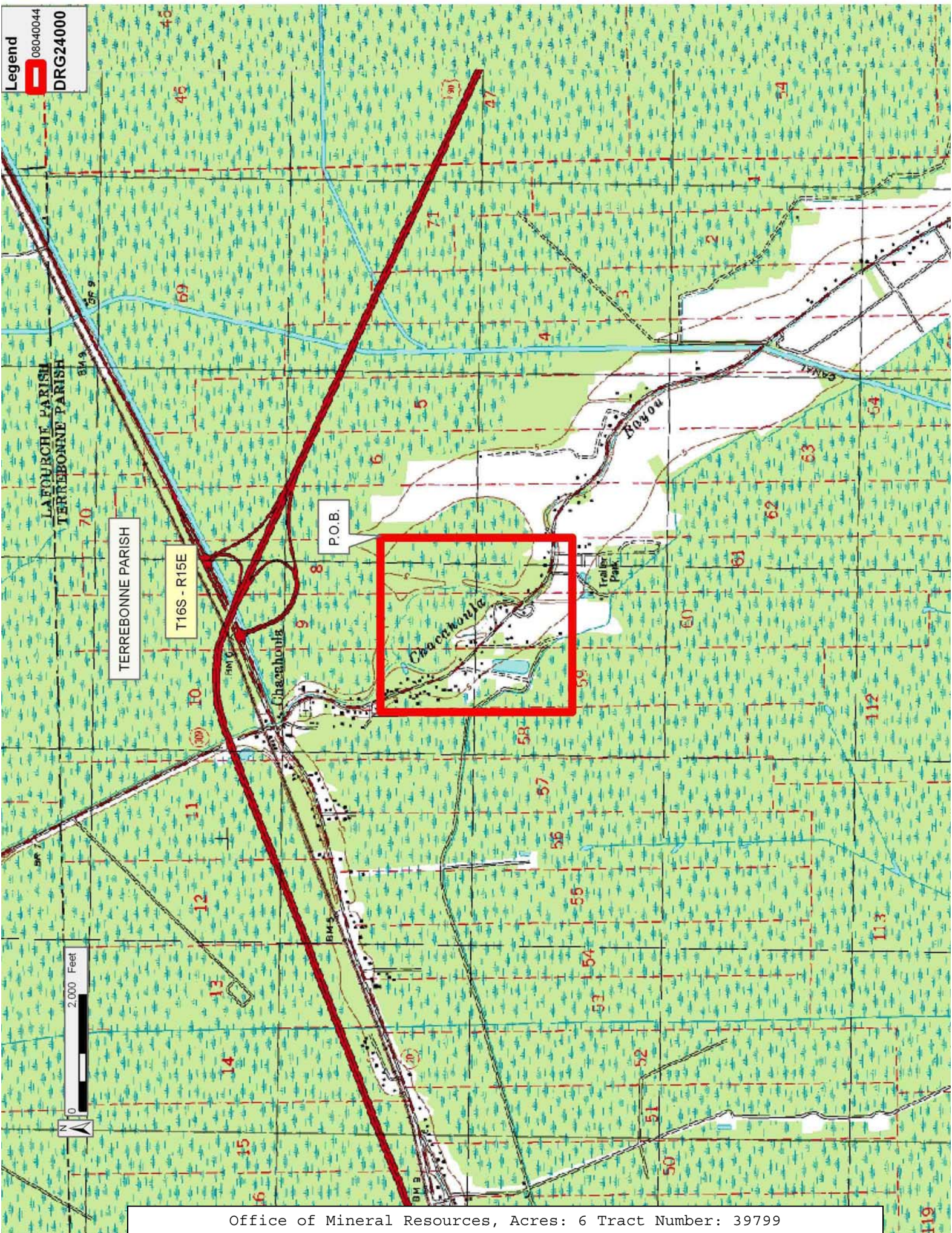
TRACT 39799 - Terrebonne Parish, Louisiana

A certain Tract of land, excluding the beds and bottoms of all navigable waters, belonging to and not presently under mineral lease from Louisiana Department Of Transportation And Development on April 9, 2008, being more fully described as follows: Beginning at a point having Coordinates of X = 2,137,485.67 and Y = 376,317.11; thence South 3,300.00 feet to a point having Coordinates of X = 2,137,485.67 and Y = 373,017.11; thence West 3,000.00 feet to a point having Coordinates of X = 2,134,485.67 and Y = 373,017.11; thence North 3,300.00 feet to a point having Coordinates of X = 2,134,485.67 and Y = 376,317.11; thence East 3,000.00 feet to the point of beginning, containing approximately **6 acres**, all as more particularly outlined on a plat on file in the Office of Mineral Resources, Department of Natural Resources. The description is based on information provided by the State Agency regarding location and ownership of surface and mineral rights. All bearings, distances and coordinates, if applicable, are based on Louisiana Coordinate System of 1927, (North or South Zone).

NOTE: The above description of the Tract nominated for lease has been provided and corrected, where required, exclusively by the nomination party. Any mineral lease selected from this Tract and awarded by the Louisiana State Mineral Board shall be without warranty of any kind, either express, implied, or statutory, including, but not limited to, the implied warranties of merchantability and fitness for a particular purpose. Should the mineral lease awarded by the Louisiana State Mineral Board be subsequently modified, cancelled or abrogated due to the existence of conflicting leases, operating agreements, private claims or other future obligations or conditions which may affect all or any portion of the leased Tract, it shall not relieve the Lessee of the obligation to pay any bonus due thereon to the Louisiana State Mineral Board, nor shall the Louisiana State Mineral Board be obligated to refund any consideration paid by the Lessor prior to such modification, cancellation, or abrogation, including, but not limited to, bonuses, rentals and royalties.

Applicant: ACL ENERGY to Agency and by Resolution from the Louisiana Department Of Transportation And Development authorizing the Mineral Board to act in its behalf

Bidder	Cash Payment	Price/Acre	Rental	Oil	Gas	Other



TRACT 39800 - Terrebonne Parish, Louisiana

A certain Tract of land, excluding the beds and bottoms of all navigable waters, belonging to and not presently under mineral lease from Louisiana Department Of Transportation And Development on April 9, 2008, being more fully described as follows: Beginning at a point having Louisiana Coordinates of X = 2,124,801.33 and Y = 375,317.11; thence South 2,400.00 feet to a point having Coordinates of X = 2,124,801.33 and Y = 372,917.11; thence West 5,600.00 feet to a point having Coordinates of X = 2,119,201.33 and Y = 372,917.11; thence North 2,400.00 feet to a point having Coordinates of X = 2,119,201.33 and Y = 375,317.11; thence East 5,600.00 feet to the point of beginning, containing approximately **8 acres**, all as more particularly outlined on a plat on file in the Office of Mineral Resources, Department of Natural Resources. The description is based on information provided by the State Agency regarding location and ownership of surface and mineral rights. All bearings, distances and coordinates, if applicable, are based on Louisiana Coordinate System of 1927, (North or South Zone).

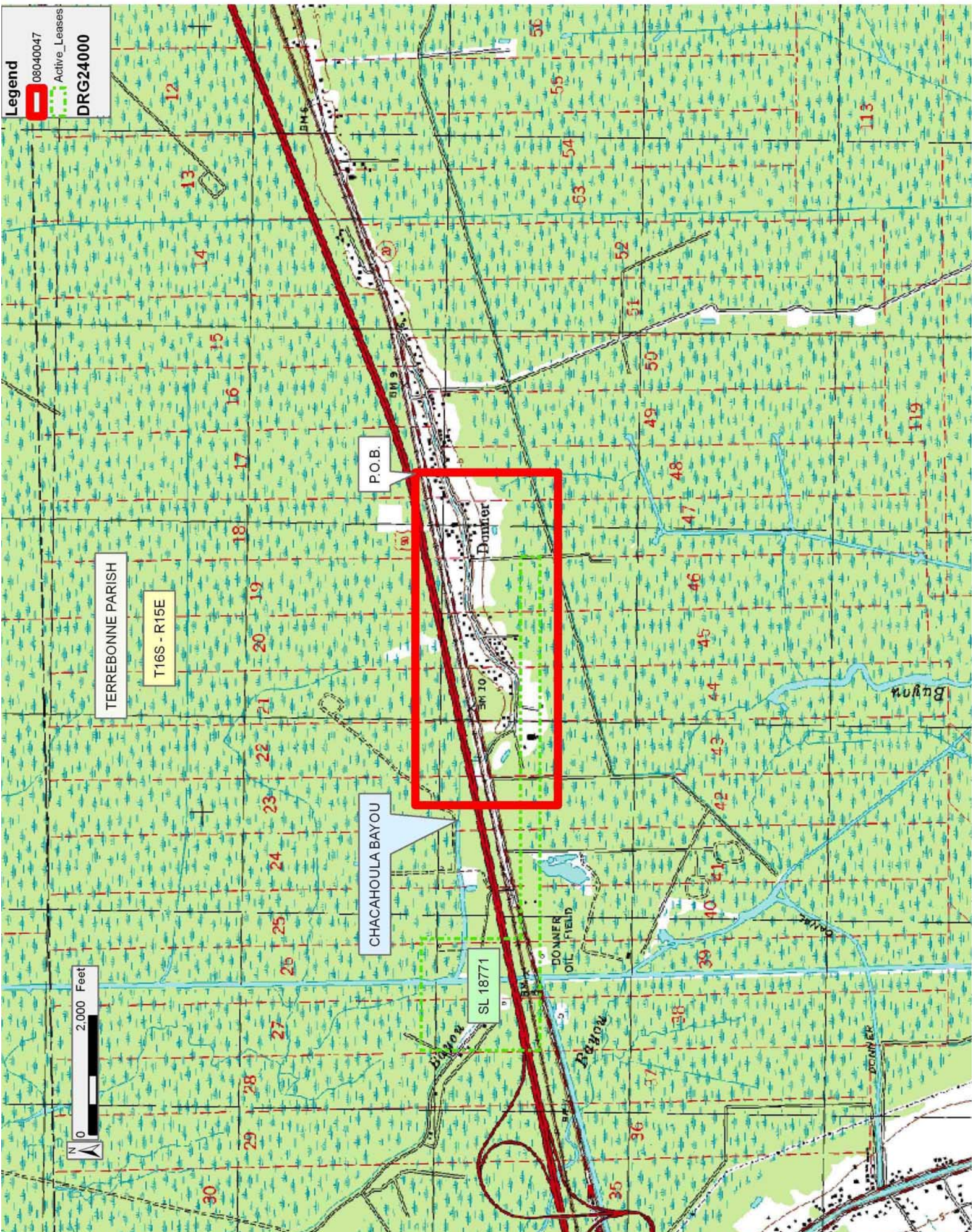
NOTE: The above description of the Tract nominated for lease has been provided and corrected, where required, exclusively by the nomination party. Any mineral lease selected from this Tract and awarded by the Louisiana State Mineral Board shall be without warranty of any kind, either express, implied, or statutory, including, but not limited to, the implied warranties of merchantability and fitness for a particular purpose. Should the mineral lease awarded by the Louisiana State Mineral Board be subsequently modified, cancelled or abrogated due to the existence of conflicting leases, operating agreements, private claims or other future obligations or conditions which may affect all or any portion of the leased Tract, it shall not relieve the Lessee of the obligation to pay any bonus due thereon to the Louisiana State Mineral Board, nor shall the Louisiana State Mineral Board be obligated to refund any consideration paid by the Lessor prior to such modification, cancellation, or abrogation, including, but not limited to, bonuses, rentals and royalties.

Applicant: ACL ENERGY to Agency and by Resolution from the Louisiana Department Of Transportation And Development authorizing the Mineral Board to act in its behalf

Bidder	Cash Payment	Price/Acre	Rental	Oil	Gas	Other

Legend

- 08040047
- Active_Leases
- DRG24000



TRACT 39801 - St. Mary Parish School Board - St. Mary Parish, Louisiana

The State Mineral Board acting on behalf of the St. Mary Parish School Board, pursuant to Resolution(s) adopted by that (those) body(ies) and in accordance with Louisiana Revised Statutes 30:121-136 and 151-156, as amended, and Article XIV, Section 16(A)(9) and (B) of the Louisiana Constitution of 1974, as same may be continued and promulgated in proper statutory form and, further, amended from time to time, advertises the lands not under mineral lease on April 9, 2008, excluding the beds and bottoms of all navigable water bodies located within the following: All or a portion of Section 15 and 16 and 10 and 9 and 21 and 17, Township 17 South, Range 10 East in St. Mary Parish, Louisiana, All of the Southwest Quarter (SW/4) of Section 16, Township 17 South, Range 10 East, St. Mary Parish Louisiana, containing approximately **160 acres**, all as more particularly outlined on a plat on file in the Office of Mineral Resources, Department of Natural Resources. All bearings, distances and coordinates are based on Louisiana Coordinate System of 1927, (North or South Zone).

NOTE: The above description of the Tract nominated for lease has been provided and corrected, where required, exclusively by the nomination party. Any mineral lease selected from this Tract and awarded by the Louisiana State Mineral Board shall be without warranty of any kind, either express, implied, or statutory, including, but not limited to, the implied warranties of merchantability and fitness for a particular purpose. Should the mineral lease awarded by the Louisiana State Mineral Board be subsequently modified, cancelled or abrogated due to the existence of conflicting leases, operating agreements, private claims or other future obligations or conditions which may affect all or any portion of the leased Tract, it shall not relieve the Lessee of the obligation to pay any bonus due thereon to the Louisiana State Mineral Board, nor shall the Louisiana State Mineral Board be obligated to refund any consideration paid by the Lessor prior to such modification, cancellation, or abrogation, including, but not limited to, bonuses, rentals and royalties.

Applicant: FLEETWOOD RESOURCES, INC. to Agency and by Resolution from the St. Mary Parish School Board authorizing the Mineral Board to act in its behalf

Bidder	Cash Payment	Price/Acre	Rental	Oil	Gas	Other

Legend

- 08040016
- Active_Leases
- DRG24000

