

TRACT 39789 - Caddo and De Soto Parishes, Louisiana

A certain Tract of land, excluding the beds and bottoms of all navigable waters, belonging to and not presently under mineral lease from Desoto Parish Police Jury on April 9, 2008, being more fully described as follows: All of the dedicated roads, streets, alleys and lands located within Section 35, Township 16 North Range 14 West and Section 2, Township 15 North Range 14 West, Desoto Parish, Louisiana, containing approximately **44.16 acres**, all as more particularly outlined on a plat on file in the Office of Mineral Resources, Department of Natural Resources. The description is based on information provided by the State Agency regarding location and ownership of surface and mineral rights. All bearings, distances and coordinates, if applicable, are based on Louisiana Coordinate System of 1927, (North or South Zone).

NOTE: The above description of the Tract nominated for lease has been provided and corrected, where required, exclusively by the nomination party. Any mineral lease selected from this Tract and awarded by the Louisiana State Mineral Board shall be without warranty of any kind, either express, implied, or statutory, including, but not limited to, the implied warranties of merchantability and fitness for a particular purpose. Should the mineral lease awarded by the Louisiana State Mineral Board be subsequently modified, cancelled or abrogated due to the existence of conflicting leases, operating agreements, private claims or other future obligations or conditions which may affect all or any portion of the leased Tract, it shall not relieve the Lessee of the obligation to pay any bonus due thereon to the Louisiana State Mineral Board, nor shall the Louisiana State Mineral Board be obligated to refund any consideration paid by the Lessor prior to such modification, cancellation, or abrogation, including, but not limited to, bonuses, rentals and royalties.

NOTE: No drilling operations shall be conducted on the above leased land without the express written consent of the DeSoto Parish Police Jury.

Applicant: CLARK ENERGY COMPANY, INC. to Agency and by Resolution from the Desoto Parish Police Jury authorizing the Mineral Board to act in its behalf

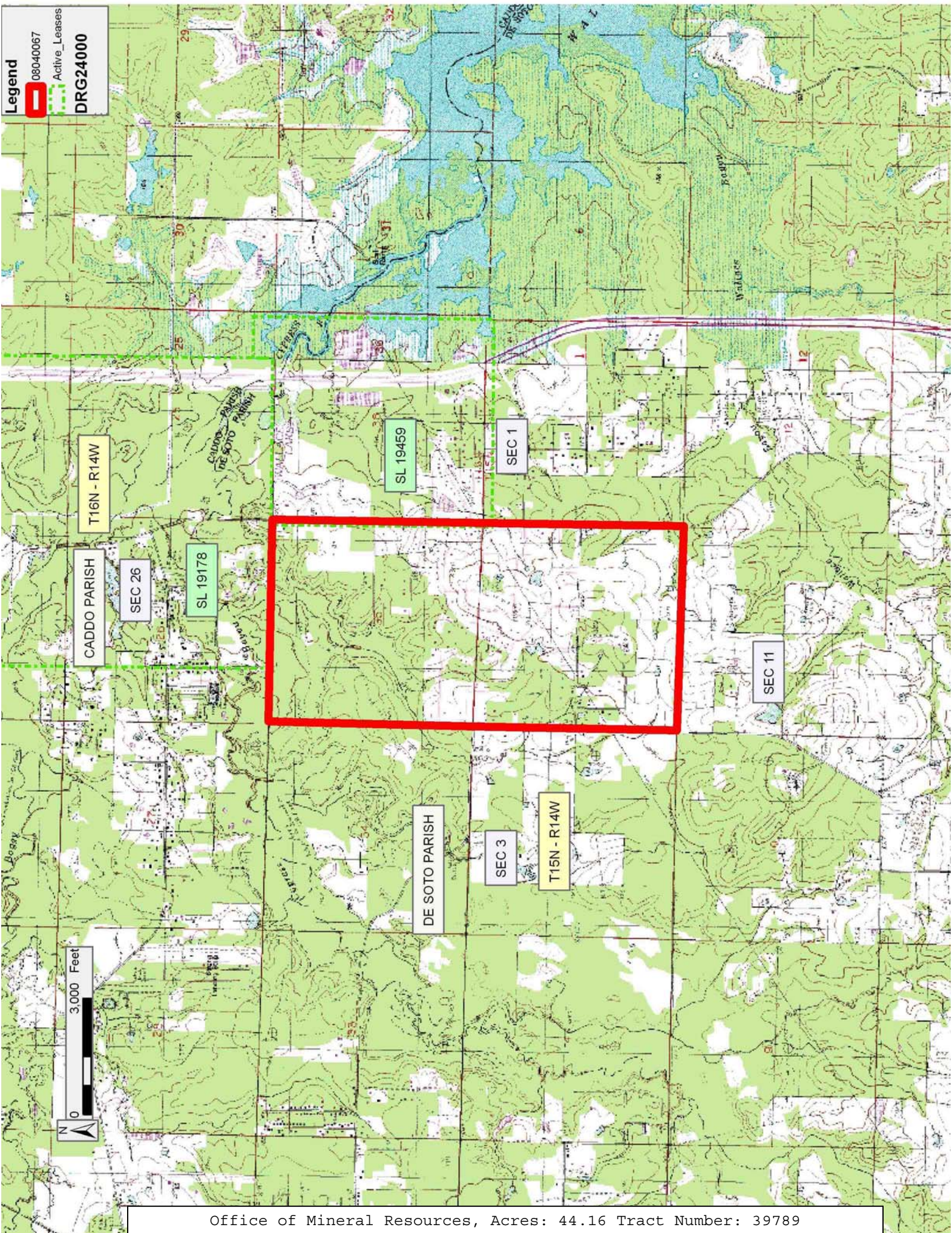
Bidder	Cash Payment	Price/Acre	Rental	Oil	Gas	Other

Legend

08040067

Active_Leases

DRG24000



TRACT 39790 - Caddo and De Soto Parishes, Louisiana

A certain Tract of land, excluding the beds and bottoms of all navigable waters, belonging to and not presently under mineral lease from Desoto Parish Police Jury on April 9, 2008, being more fully described as follows: All of the dedicated roads, streets, alleys and lands located within Section 36, Township 16 North Range 14 West, Desoto Parish, Louisiana, containing approximately **17.10 acres**, all as more particularly outlined on a plat on file in the Office of Mineral Resources, Department of Natural Resources. The description is based on information provided by the State Agency regarding location and ownership of surface and mineral rights. All bearings, distances and coordinates, if applicable, are based on Louisiana Coordinate System of 1927, (North or South Zone).

NOTE: The above description of the Tract nominated for lease has been provided and corrected, where required, exclusively by the nomination party. Any mineral lease selected from this Tract and awarded by the Louisiana State Mineral Board shall be without warranty of any kind, either express, implied, or statutory, including, but not limited to, the implied warranties of merchantability and fitness for a particular purpose. Should the mineral lease awarded by the Louisiana State Mineral Board be subsequently modified, cancelled or abrogated due to the existence of conflicting leases, operating agreements, private claims or other future obligations or conditions which may affect all or any portion of the leased Tract, it shall not relieve the Lessee of the obligation to pay any bonus due thereon to the Louisiana State Mineral Board, nor shall the Louisiana State Mineral Board be obligated to refund any consideration paid by the Lessor prior to such modification, cancellation, or abrogation, including, but not limited to, bonuses, rentals and royalties.

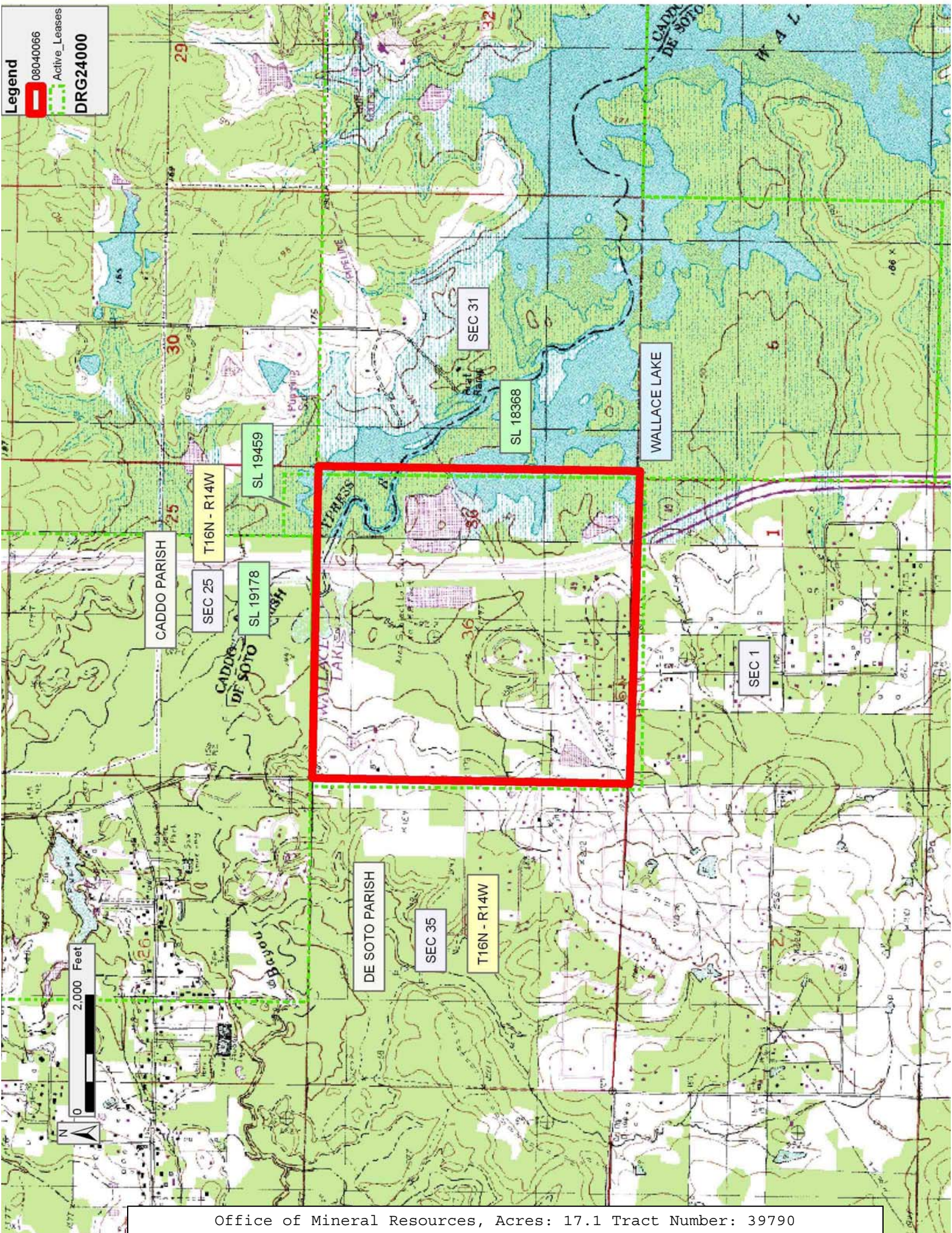
NOTE: No drilling operations shall be conducted on the above leased land without the express written consent of the DeSoto Parish Police Jury.

Applicant: CLARK ENERGY COMPANY, INC. to Agency and by Resolution from the Desoto Parish Police Jury authorizing the Mineral Board to act in its behalf

Bidder	Cash Payment	Price/Acre	Rental	Oil	Gas	Other

Legend

- 08040066
- Active_Leases
- DRG24000



TRACT 39791 - Natchitoches Parish School Board - Natchitoches Parish, Louisiana

The State Mineral Board acting on behalf of the Natchitoches Parish School Board, pursuant to Resolution(s) adopted by that (those) body(ies) and in accordance with Louisiana Revised Statutes 30:121-136 and 151-156, as amended, and Article XIV, Section 16(A)(9) and (B) of the Louisiana Constitution of 1974, as same may be continued and promulgated in proper statutory form and, further, amended from time to time, advertises the lands not under mineral lease on April 9, 2008, excluding the beds and bottoms of all navigable water bodies located within the following: All or a portion of Section 20 and 16 and 21 and 17, Township 9 North, Range 10 West in Natchitoches Parish, Louisiana, The Southwest Quarter of the Northeast Quarter (SW/4 NE/4), the East Half of the Southeast Quarter (E/2 SE/4), and the Northwest Quarter of the Southeast Quarter (NW/4 SE/4) of Section 16, Township 9 North, Range 10 West, Natchitoches Parish, Louisiana, containing approximately **160 acres**, all as more particularly outlined on a plat on file in the Office of Mineral Resources, Department of Natural Resources. All bearings, distances and coordinates are based on Louisiana Coordinate System of 1927, (North or South Zone).

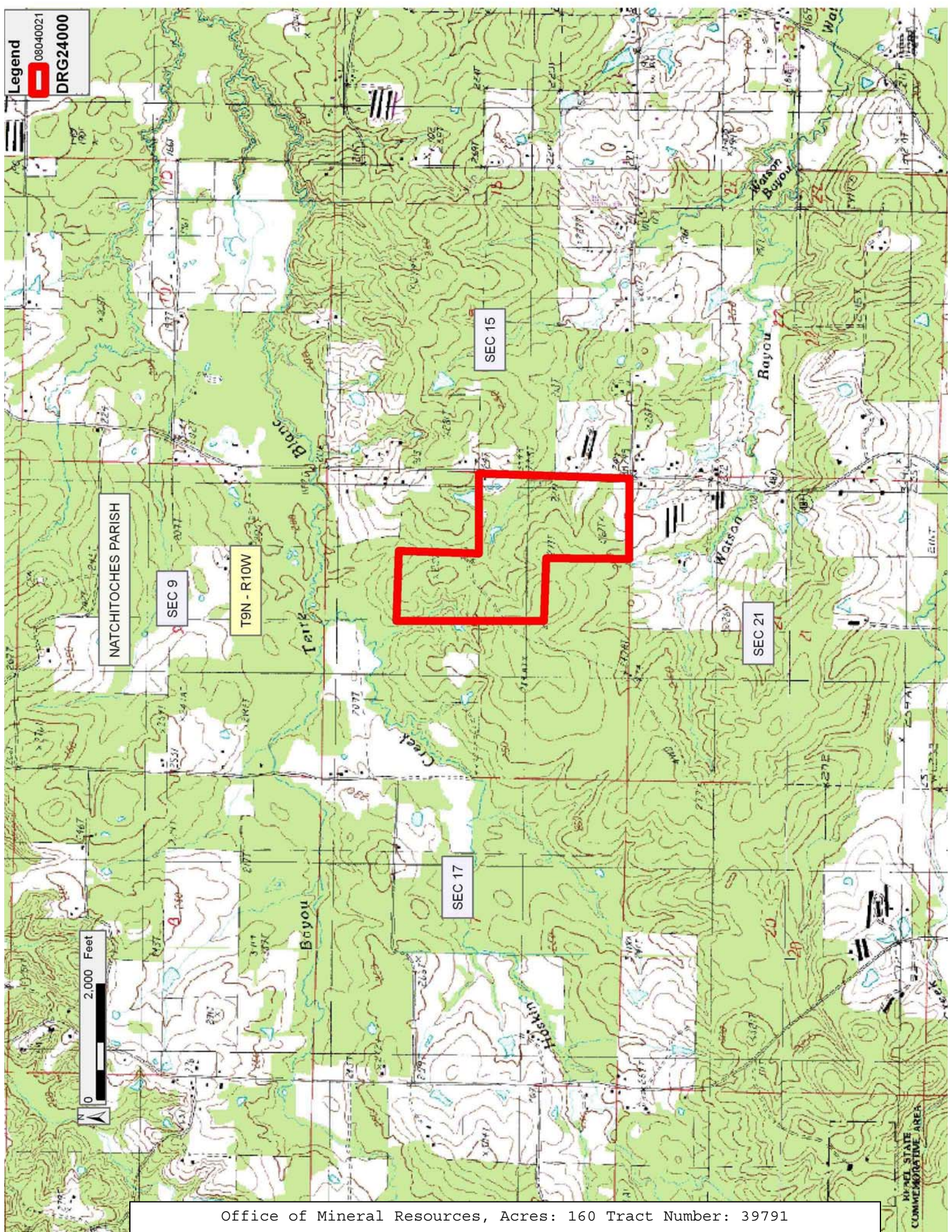
NOTE: The above description of the Tract nominated for lease has been provided and corrected, where required, exclusively by the nomination party. Any mineral lease selected from this Tract and awarded by the Louisiana State Mineral Board shall be without warranty of any kind, either express, implied, or statutory, including, but not limited to, the implied warranties of merchantability and fitness for a particular purpose. Should the mineral lease awarded by the Louisiana State Mineral Board be subsequently modified, cancelled or abrogated due to the existence of conflicting leases, operating agreements, private claims or other future obligations or conditions which may affect all or any portion of the leased Tract, it shall not relieve the Lessee of the obligation to pay any bonus due thereon to the Louisiana State Mineral Board, nor shall the Louisiana State Mineral Board be obligated to refund any consideration paid by the Lessor prior to such modification, cancellation, or abrogation, including, but not limited to, bonuses, rentals and royalties.

NOTE: There will be a minimum of 25% royalty on this tract.

Bidder	Cash Payment	Price/Acre	Rental	Oil	Gas	Other

Applicant: CHARLESTON ENERGY, INC. to Agency and by Resolution from the Natchitoches Parish School Board authorizing the Mineral Board to act in its behalf

Legend
08040021
DRG24000



NATCHITOCHE PARISH

SEC 9

T9N - R10W

SEC 15

SEC 17

SEC 21

2,000 Feet

LOUISIANA STATE
COMMEMORATIVE AREA

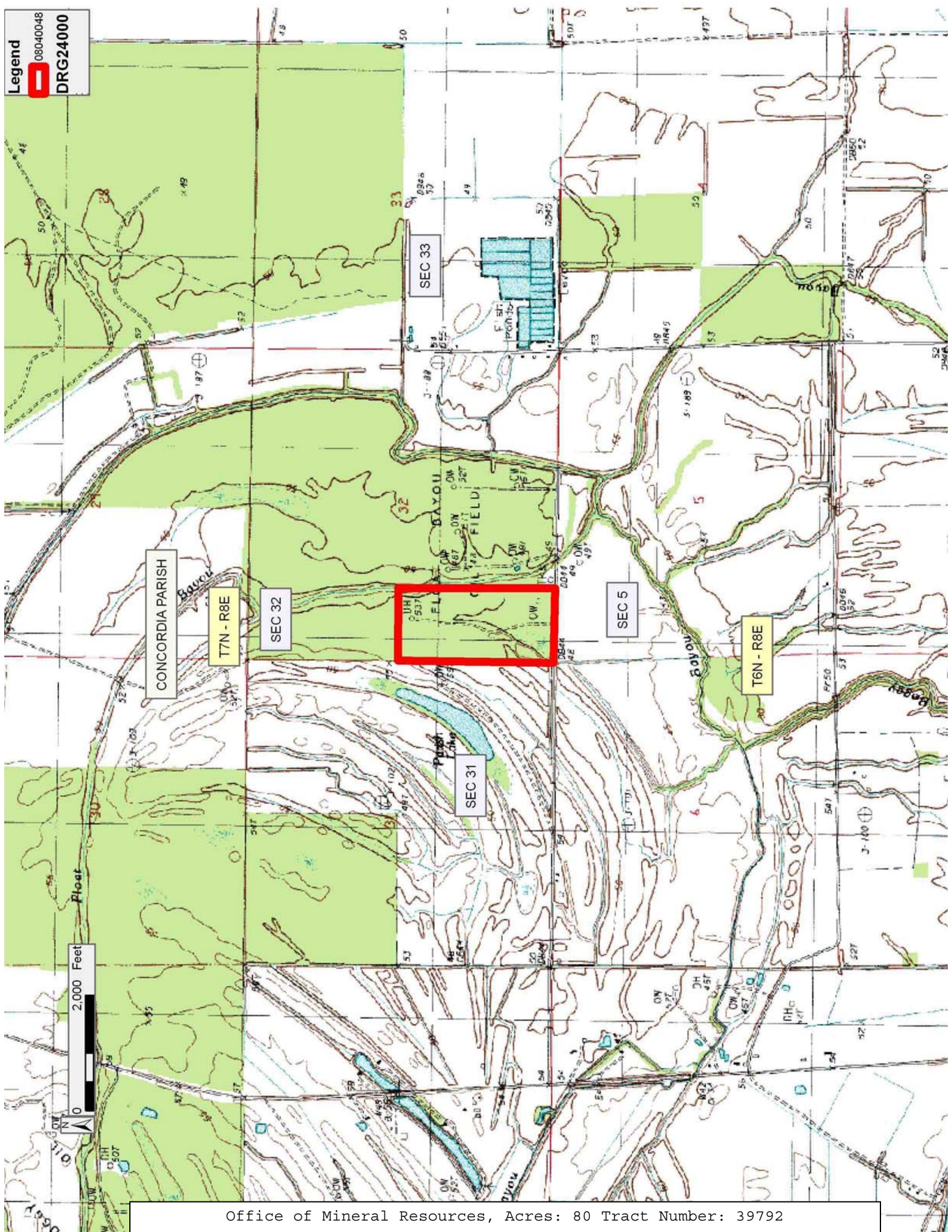
TRACT 39792 - Concordia Parish, Louisiana

A certain Tract of land, excluding the beds and bottoms of all navigable waters, belonging to and not presently under mineral lease from Fifth Louisiana Levee District - Board Of Commissioners on April 9, 2008, being more fully described as follows: That certain tract of land being the West Half of the Southwest Quarter, Section 32, Township 7 North, Range 8 East, Concordia Parish, Louisiana, containing approximately **80 acres**, all as more particularly outlined on a plat on file in the Office of Mineral Resources, Department of Natural Resources. The description is based on information provided by the State Agency regarding location and ownership of surface and mineral rights. All bearings, distances and coordinates, if applicable, are based on Louisiana Coordinate System of 1927, (North or South Zone).

NOTE: The above description of the Tract nominated for lease has been provided and corrected, where required, exclusively by the nomination party. Any mineral lease selected from this Tract and awarded by the Louisiana State Mineral Board shall be without warranty of any kind, either express, implied, or statutory, including, but not limited to, the implied warranties of merchantability and fitness for a particular purpose. Should the mineral lease awarded by the Louisiana State Mineral Board be subsequently modified, cancelled or abrogated due to the existence of conflicting leases, operating agreements, private claims or other future obligations or conditions which may affect all or any portion of the leased Tract, it shall not relieve the Lessee of the obligation to pay any bonus due thereon to the Louisiana State Mineral Board, nor shall the Louisiana State Mineral Board be obligated to refund any consideration paid by the Lessor prior to such modification, cancellation, or abrogation, including, but not limited to, bonuses, rentals and royalties.

Applicant: LESLIE M. COOPER to Agency and by Resolution from the Fifth Louisiana Levee District - Board Of Commissioners authorizing the Mineral Board to act in its behalf

Bidder	Cash Payment	Price/Acre	Rental	Oil	Gas	Other



TRACT 39793 - Lafayette Parish, Louisiana

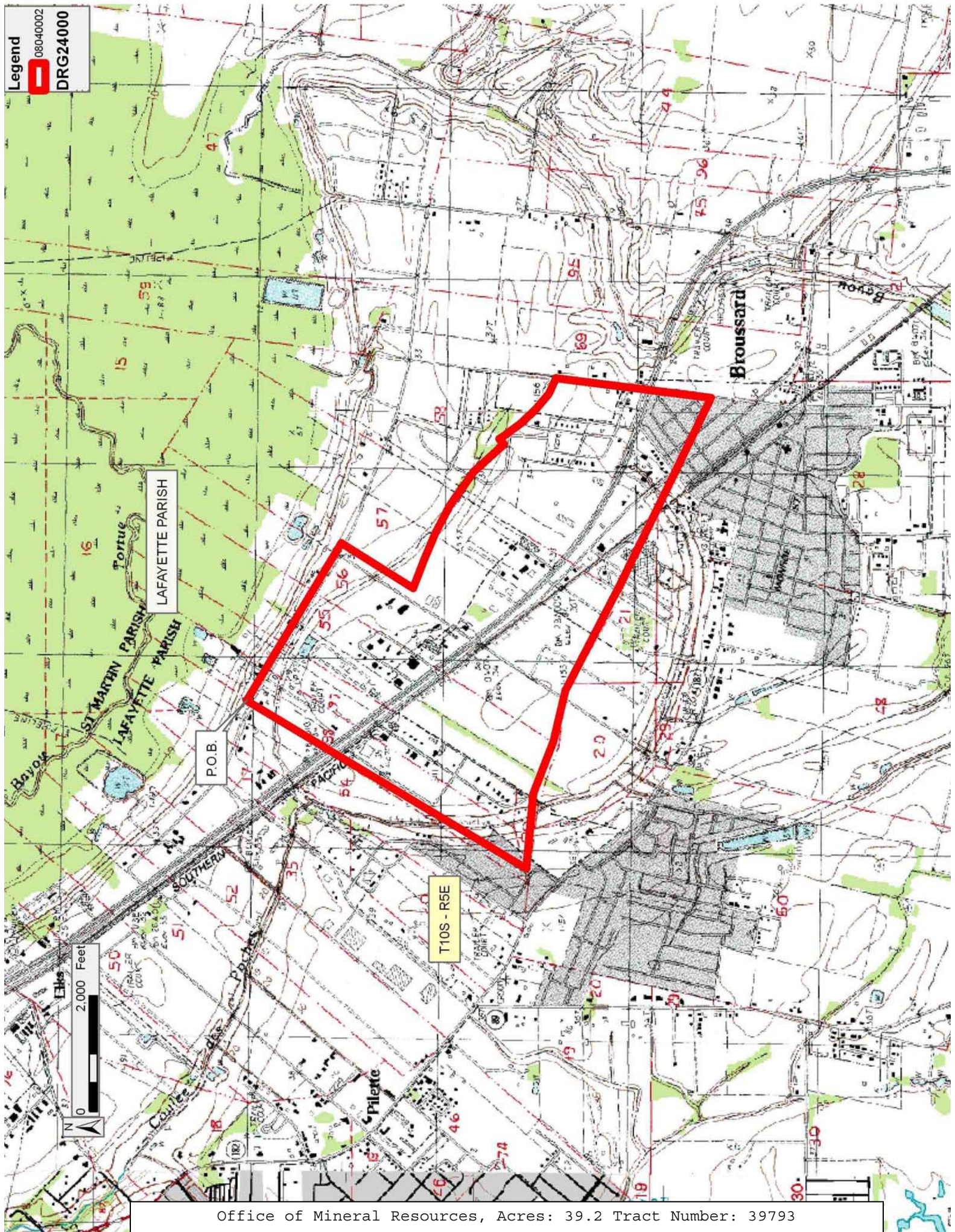
A certain Tract of land, excluding the beds and bottoms of all navigable waters, belonging to and not presently under mineral lease from Louisiana Department Of Transportation And Development on April 9, 2008, being more fully described as follows: Beginning at a point having Coordinates of X = 1,797,492.26 and Y = 547,710.24; thence Southeasterly 3,173.52 feet to a point on the Western boundary of BM 3 RD SU A (Office of Conservation Order No. 442 D 2 effective November 5, 1986), having Coordinates of X = 1,800,213.28 and Y = 546,077.05; thence South 32 degrees 08 minutes 28 seconds West 1,467.99 feet along said Western boundary to a point on the Southern boundary of said BM 3 RD SU A, having Coordinates of X = 1,799,432.30 and Y = 544,834.05; thence along said Southern boundary of BM 3 RD SU A the following courses: South 68 degrees 57 minutes 46 seconds East 518.25 feet; South 66 degrees 40 minutes 12 seconds East 515.12 feet; South 62 degrees 36 minutes 24 seconds East 525.98 feet; South 54 degrees 48 minutes 47 seconds East 721.91 feet; South 42 degrees 10 minutes 35 seconds East 698.60 feet; Northeasterly 125.27 feet to the most Westerly point on the Southern boundary of BM 3 RA SU B (Office of Conservation Order No. 442 D 2 effective November 5, 1986), having Coordinates of X = 1,802,010.00 and Y = 543,350.00; thence Southeasterly 1,176.16 feet on said Southern boundary of BM 3 RA SU B along a curve to the left having a radius of 3,000.00 feet whose long chord bears South 42 degrees 23 minutes 56 seconds East 1,168.64 feet to a point having Coordinates of X = 1,802,798.00 and Y = 542,487.00; thence Southeasterly 280.65 feet on said Southern boundary of BM 3 RA SU B along a curve to the left having a radius of 7,100.00 feet whose long chord bears South 66 degrees 10 minutes 02 seconds East 280.63 feet to a point having Coordinates of X = 1,803,054.70 and Y = 542,373.60; thence South 07 degrees 07 minutes 18 seconds West 2,700.66 feet to a point having Coordinates of X = 1,802,719.88 and Y = 539,693.78; thence North 64 degrees 16 minutes 46 seconds West 2,328.97 feet to a point having Coordinates of X = 1,800,621.67 and Y = 540,704.51; thence North 63 degrees 49 minutes 53 seconds West 1,315.13 feet to a point having Coordinates of X = 1,799,441.34 and Y = 541,284.51; thence North 62 degrees 39 minutes 47 seconds West 2,002.60 feet to a point having Coordinates of X = 1,797,662.38 and Y = 542,204.15; thence North 76 degrees 46 minutes 25 seconds West 903.64 feet to a point having Coordinates of X = 1,796,782.71 and Y = 542,410.90; thence North 68 degrees 52 minutes 40 seconds West 963.09 feet to a point having Coordinates of X = 1,795,884.33 and Y = 542,757.96; thence North 84 degrees 42 minutes 07 seconds West 1,303.11 feet to a point having Coordinates of X = 1,794,586.79 and Y = 542,878.29; thence North 31 degrees 01 minutes 07 seconds East 5,638.22 feet to the point of beginning, excluding beds and bottoms of all navigable waters, containing approximately **39.2 acres**, all as more particularly outlined on a plat on file in the Office of Mineral Resources, Department of Natural Resources. The description is based on information provided by the State Agency regarding location and ownership of surface and mineral rights. All bearings, distances and coordinates, if applicable, are based on Louisiana Coordinate System of 1927, (North or South Zone).

NOTE: The above description of the Tract nominated for lease has been provided and corrected, where required, exclusively by the nomination party. Any mineral lease selected from this Tract and awarded by the Louisiana State Mineral Board shall be without warranty of any kind, either express, implied, or statutory, including, but not limited to, the implied warranties of merchantability and fitness for a particular purpose. Should the mineral lease awarded by the Louisiana State Mineral Board be subsequently modified, cancelled or abrogated due to the existence of conflicting leases, operating agreements, private claims or other future obligations or conditions which may affect all or any portion of the leased Tract, it shall not relieve the Lessee of the obligation to pay any bonus due thereon to the Louisiana State Mineral Board, nor shall the Louisiana State Mineral Board be obligated to refund any consideration paid by the Lessor prior to such modification, cancellation, or abrogation, including, but not limited to, bonuses, rentals and royalties.

Applicant: E & E ENERGY to Agency and by Resolution from the Louisiana Department Of Transportation And Development authorizing the Mineral Board to act in its behalf

Bidder	Cash Payment	Price/Acre	Rental	Oil	Gas	Other

Legend
08040002
DRG24000



T10S - R5E

TRACT 39794 - Lafayette Parish, Louisiana

A certain Tract of land, excluding the beds and bottoms of all navigable waters, belonging to and not presently under mineral lease from Lafayette City-Parish Consolidated Government on April 9, 2008, being more fully described as follows: Beginning at a point having Coordinates of X = 1,797,492.26 and Y = 547,710.24; thence South 59 degrees 01 minutes 38 seconds East 3,173.52 feet to a point on the Western boundary of BM 3 RD SU A (Office of Conservation Order No. 442-D-2 effective November 5, 1986), having Coordinates of X = 1,800,213.28 and Y = 546,077.05; thence South 32 degrees 08 minutes 28 seconds West 1,467.99 feet along said Western boundary to a point on the Southern boundary of said BM 3 RD SU A, having Coordinates of X = 1,799,432.30 and Y = 544,834.05; thence along said Southern boundary of BM 3 RD SU A the following courses: South 68 degrees 57 minutes 46 seconds East 518.25 feet; South 66 degrees 40 minutes 12 seconds East 515.12 feet; South 62 degrees 36 minutes 24 seconds East 525.98 feet; South 54 degrees 48 minutes 47 seconds East 721.91 feet; South 42 degrees 10 minutes 35 seconds East 698.60 feet; North 49 degrees 16 minutes 57 seconds East 125.27 feet to the most Westerly point on the Southern boundary of BM-3 RA SU B (Office of Conservation Order No. 442-D-2 effective November 5, 1986), having Coordinates of X = 1,802,010.00 and Y = 543,350.00; thence Southeasterly 1,176.16 feet on said Southern boundary of BM-3 RA SU B along a curve to the left having a radius of 3,000.00 feet whose long chord bears South 42 degrees 23 minutes 56 seconds East 1,168.64 feet to a point having Coordinates of X = 1,802,798.00 and Y = 542,487.00; thence Southeasterly 280.65 feet on said Southern boundary of BM-3 RA SU B along a curve to the left having a radius of 7,100.00 feet whose long chord bears South 66 degrees 10 minutes 02 seconds East 280.63 feet to a point having Coordinates of X = 1,803,054.70 and Y = 542,373.60; thence South 07 degrees 07 minutes 18 seconds West 2,700.66 feet to a point having Coordinates of X = 1,802,719.88 and Y = 539,693.78; thence North 64 degrees 16 minutes 46 seconds West 2,328.97 feet to a point having Coordinates of X = 1,800,621.67 and Y = 540,704.51; thence North 63 degrees 49 minutes 53 seconds West 1,315.13 feet to a point having Coordinates of X = 1,799,441.34 and Y = 541,284.51; thence North 62 degrees 39 minutes 47 seconds West 2,002.60 feet to a point having Coordinates of X = 1,797,662.38 and Y = 542,204.15; thence North 76 degrees 46 minutes 25 seconds West 903.64 feet to a point having Coordinates of X = 1,796,782.71 and Y = 542,410.90; thence North 68 degrees 52 minutes 40 seconds West 963.09 feet to a point having Coordinates of X = 1,795,884.33 and Y = 542,757.96; thence North 84 degrees 42 minutes 07 seconds West 1,303.11 feet to a point having Coordinates of X = 1,794,586.79 and Y = 542,878.29; thence North 31 degrees 01 minutes 07 seconds East 5,638.22 feet to the point of beginning, excluding beds and bottoms of all navigable waters, containing approximately **7.5 acres**, all as more particularly outlined on a plat on file in the Office of Mineral Resources, Department of Natural Resources. The description is based on information provided by the State Agency regarding location and ownership of surface and mineral rights. All

bearings, distances and coordinates, if applicable, are based on Louisiana Coordinate System of 1927, (North or South Zone).

NOTE: The above description of the Tract nominated for lease has been provided and corrected, where required, exclusively by the nomination party. Any mineral lease selected from this Tract and awarded by the Louisiana State Mineral Board shall be without warranty of any kind, either express, implied, or statutory, including, but not limited to, the implied warranties of merchantability and fitness for a particular purpose. Should the mineral lease awarded by the Louisiana State Mineral Board be subsequently modified, cancelled or abrogated due to the existence of conflicting leases, operating agreements, private claims or other future obligations or conditions which may affect all or any portion of the leased Tract, it shall not relieve the Lessee of the obligation to pay any bonus due thereon to the Louisiana State Mineral Board, nor shall the Louisiana State Mineral Board be obligated to refund any consideration paid by the Lessor prior to such modification, cancellation, or abrogation, including, but not limited to, bonuses, rentals and royalties.

NOTE: There shall be no drilling or surface operations (including particularly geophysical operations) on the lands vested in the Lafayette City-Parish Consolidated Government.

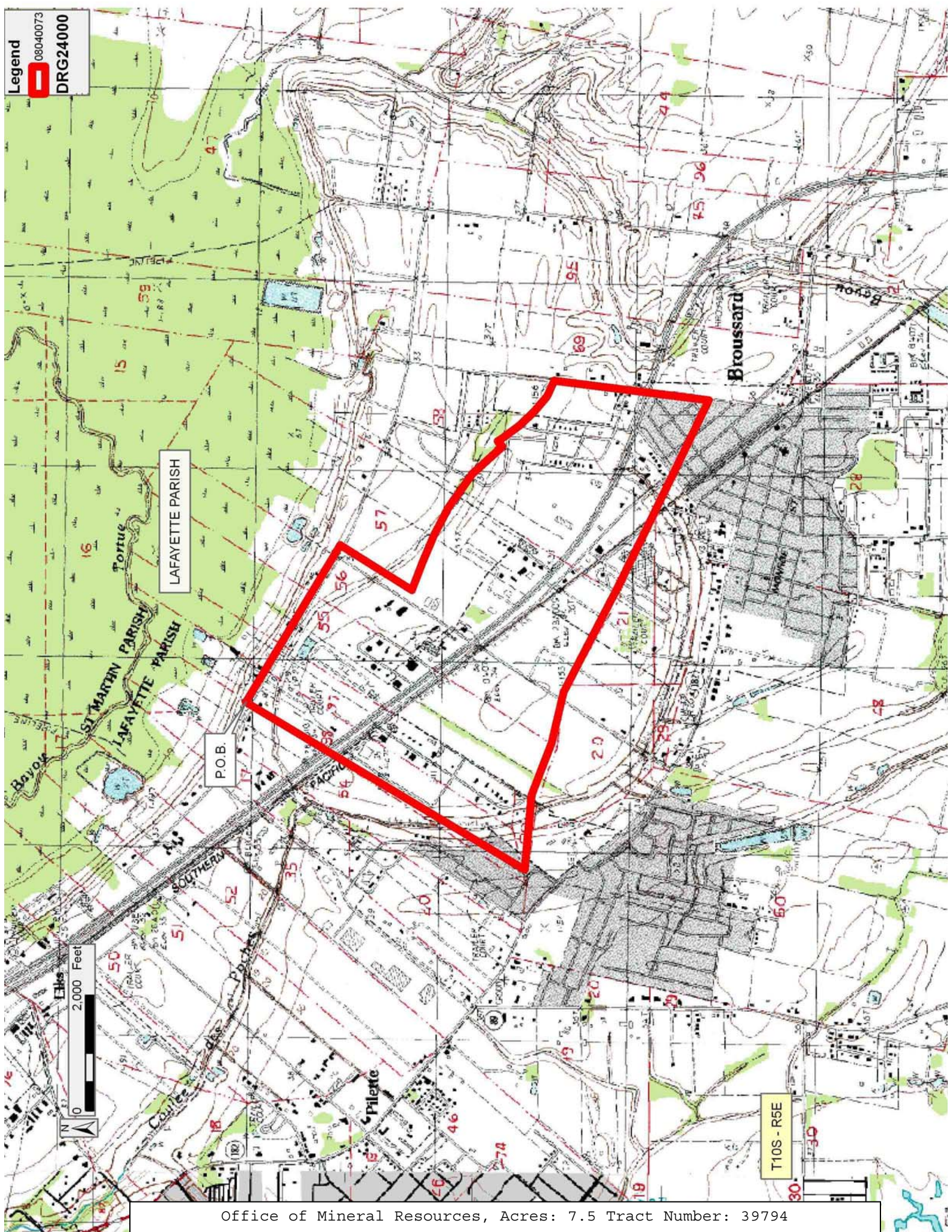
NOTE: Lessee or assignee shall be required to obtain consent from the Lafayette City-Parish Consolidated Government prior to the execution of any assignment, sublease or other transfer.

NOTE: Lessee, its successors or assigns shall at all times comply with all applicable environmental and wetlands laws and regulations promulgated by the federal government, the State of Louisiana, and/or permits required under such laws and regulations.

Applicant: E & E ENERGY to Agency and by Resolution from the Lafayette City-Parish Consolidated Government authorizing the Mineral Board to act in its behalf

Bidder	Cash Payment	Price/Acre	Rental	Oil	Gas	Other

Legend
08040073
DRG24000



TRACT 39795 - Lafayette Parish, Louisiana

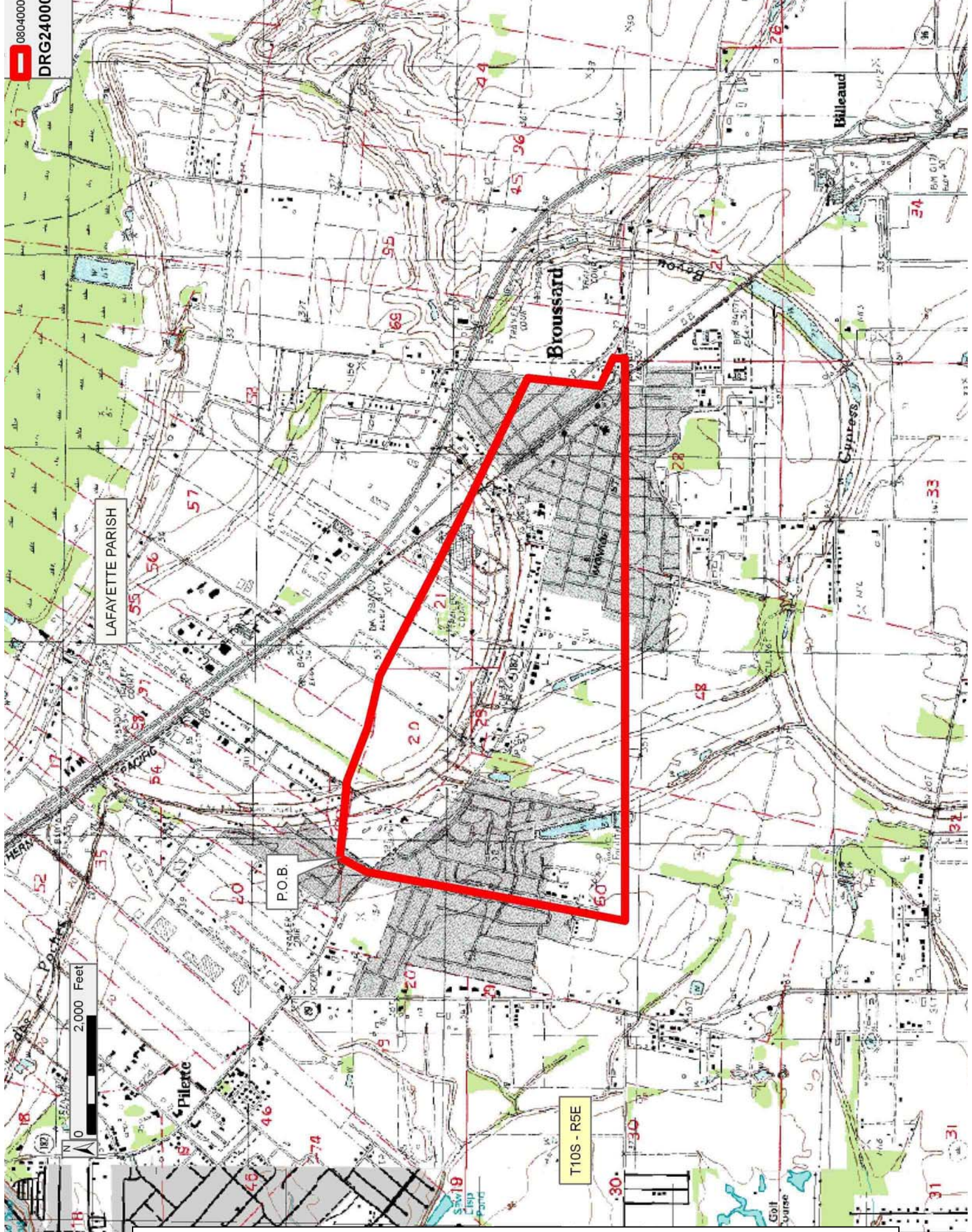
A certain Tract of land, excluding the beds and bottoms of all navigable waters, belonging to and not presently under mineral lease from Louisiana Department Of Transportation And Development on April 9, 2008, being more fully described as follows: Beginning at a point having Coordinates of X = 1,794,586.79 and Y = 542,878.29; thence South 84 degrees 42 minutes 07 seconds East 1,303.11 feet to a point having Coordinates of X = 1,795,884.33 and Y = 542,757.96; thence South 68 degrees 52 minutes 40 seconds East 963.09 feet to a point having Coordinates of X = 1,796,782.71 and Y = 542,410.90; thence South 76 degrees 46 minutes 25 seconds East 903.64 feet to a point having Coordinates of X = 1,797,662.38 and Y = 542,204.15; thence South 62 degrees 39 minutes 47 seconds East 2,002.60 feet to a point having Coordinates of X = 1,799,441.34 and Y = 541,284.51; thence South 63 degrees 49 minutes 53 seconds East 1,315.13 feet to a point having Coordinates of X = 1,800,621.67 and Y = 540,704.51; thence South 64 degrees 16 minutes 46 seconds East 2,328.97 feet to a point having Coordinates of X = 1,802,719.88 and Y = 539,693.78; thence South 06 degrees 20 minutes 55 seconds West 1,237.04 feet to a point having Coordinates of X = 1,802,583.09 and Y = 538,464.32; thence South 64 degrees 54 minutes 11 seconds East 519.83 feet to a point having Coordinates of X = 1,803,053.85 and Y = 538,243.84; thence South 00 degrees 14 minutes 23 seconds East 198.24 feet to a point having Coordinates of X = 1,803,054.68 and Y = 538,045.60; thence West 9,540.05 feet to a point having Coordinates of X = 1,793,514.63 and Y = 538,045.60; thence North 10 degrees 48 minutes 10 seconds East 2,835.18 feet to a point having Coordinates of X = 1,794,046.03 and Y = 540,830.53; thence North 10 degrees 27 minutes 39 seconds East 1,615.01 feet to a point having Coordinates of X = 1,794,339.26 and Y = 542,418.70; thence North 28 degrees 18 minutes 25 seconds East 522.00 feet to the point of beginning, excluding beds and bottoms of all navigable waters, containing approximately **4.8 acres**, all as more particularly outlined on a plat on file in the Office of Mineral Resources, Department of Natural Resources. The description is based on information provided by the State Agency regarding location and ownership of surface and mineral rights. All bearings, distances and coordinates, if applicable, are based on Louisiana Coordinate System of 1927, (North or South Zone).

NOTE: The above description of the Tract nominated for lease has been provided and corrected, where required, exclusively by the nomination party. Any mineral lease selected from this Tract and awarded by the Louisiana State Mineral Board shall be without warranty of any kind, either express, implied, or statutory, including, but not limited to, the implied warranties of merchantability and fitness for a particular purpose. Should the mineral lease awarded by the Louisiana State Mineral Board be subsequently modified, cancelled or abrogated due to the existence of conflicting leases, operating agreements, private claims or other future obligations or conditions which may affect all or any portion of the leased Tract, it shall not relieve the Lessee of the obligation to pay any bonus due thereon to the Louisiana State Mineral Board, nor shall

the Louisiana State Mineral Board be obligated to refund any consideration paid by the Lessor prior to such modification, cancellation, or abrogation, including, but not limited to, bonuses, rentals and royalties.

Applicant: E & E ENERGY to Agency and by Resolution from the Louisiana Department Of Transportation And Development authorizing the Mineral Board to act in its behalf

Bidder	Cash Payment	Price/Acre	Rental	Oil	Gas	Other



TRACT 39796 - Lafayette Parish, Louisiana

A certain Tract of land, excluding the beds and bottoms of all navigable waters, belonging to and not presently under mineral lease from Lafayette City-Parish Consolidated Government on April 9, 2008, being more fully described as follows: Beginning at a point having Coordinates of X = 1,794,586.79 and Y = 542,878.29; thence South 84 degrees 42 minutes 07 seconds East 1,303.11 feet to a point having Coordinates of X = 1,795,884.33 and Y = 542,757.96; thence South 68 degrees 52 minutes 40 seconds East 963.09 feet to a point having Coordinates of X = 1,796,782.71 and Y = 542,410.90; thence South 76 degrees 46 minutes 25 seconds East 903.64 feet to a point having Coordinates of X = 1,797,662.38 and Y = 542,204.15; thence South 62 degrees 39 minutes 47 seconds East 2,002.60 feet to a point having Coordinates of X = 1,799,441.34 and Y = 541,284.51; thence South 63 degrees 49 minutes 53 seconds East 1,315.13 feet to a point having Coordinates of X = 1,800,621.67 and Y = 540,704.51; thence South 64 degrees 16 minutes 46 seconds East 2,328.97 feet to a point having Coordinates of X = 1,802,719.88 and Y = 539,693.78; thence South 06 degrees 20 minutes 55 seconds West 1,237.04 feet to a point having Coordinates of X = 1,802,583.09 and Y = 538,464.32; thence South 64 degrees 54 minutes 11 seconds East 519.83 feet to a point having Coordinates of X = 1,803,053.85 and Y = 538,243.84; thence South 00 degrees 14 minutes 23 seconds East 198.24 feet to a point having Coordinates of X = 1,803,054.68 and Y = 538,045.60; thence West 9,540.05 feet to a point having Coordinates of X = 1,793,514.63 and Y = 538,045.60; thence North 10 degrees 48 minutes 10 seconds East 2,835.18 feet to a point having Coordinates of X = 1,794,046.03 and Y = 540,830.53; thence North 10 degrees 27 minutes 39 seconds East 1,615.01 feet to a point having Coordinates of X = 1,794,339.26 and Y = 542,418.70; thence North 28 degrees 18 minutes 25 seconds East 522.00 feet to the point of beginning, excluding beds and bottoms of all navigable waters, containing approximately **11.0 acres**, all as more particularly outlined on a plat on file in the Office of Mineral Resources, Department of Natural Resources. The description is based on information provided by the State Agency regarding location and ownership of surface and mineral rights. All bearings, distances and coordinates, if applicable, are based on Louisiana Coordinate System of 1927, (North or South Zone).

NOTE: The above description of the Tract nominated for lease has been provided and corrected, where required, exclusively by the nomination party. Any mineral lease selected from this Tract and awarded by the Louisiana State Mineral Board shall be without warranty of any kind, either express, implied, or statutory, including, but not limited to, the implied warranties of merchantability and fitness for a particular purpose. Should the mineral lease awarded by the Louisiana State Mineral Board be subsequently modified, cancelled or abrogated due to the existence of conflicting leases, operating agreements, private claims or other future obligations or conditions which may affect all or any portion of the leased Tract, it shall not relieve the Lessee of the obligation to pay any bonus due thereon to the Louisiana State Mineral Board, nor shall

the Louisiana State Mineral Board be obligated to refund any consideration paid by the Lessor prior to such modification, cancellation, or abrogation, including, but not limited to, bonuses, rentals and royalties.

NOTE: There shall be no drilling or surface operations (including particularly geophysical operations) on the lands vested in the Lafayette City-Parish Consolidated Government.

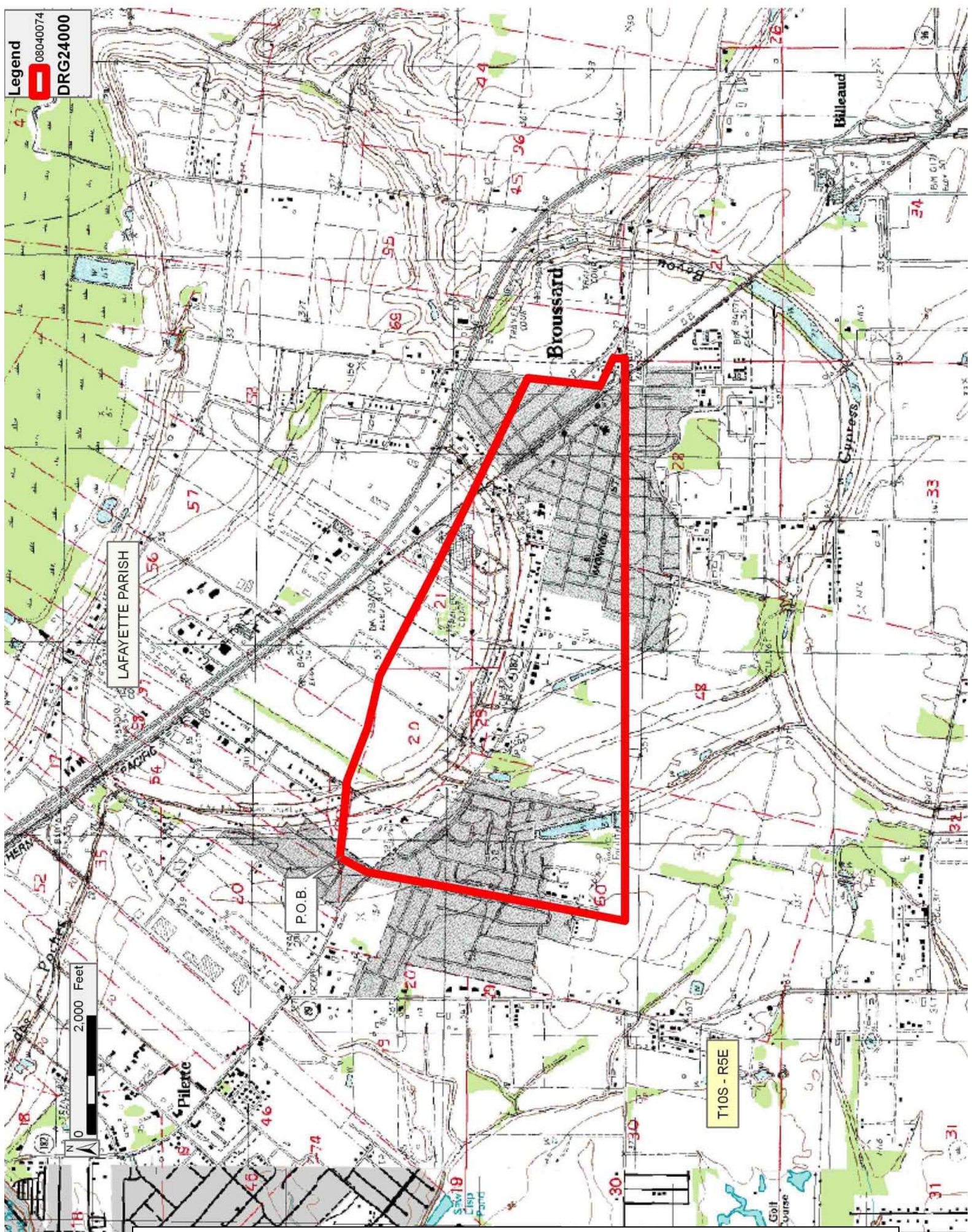
NOTE: Lessee or assignee shall be required to obtain consent from the Lafayette City-Parish Consolidated Government prior to the execution of any assignment, sublease or other transfer.

NOTE: Lessee, its successors or assigns shall at all times comply with all applicable environmental and wetlands laws and regulations promulgated by the federal government, the State of Louisiana, and/or permits required under such laws and regulations.

Applicant: E & E ENERGY to Agency and by Resolution from the Lafayette City-Parish Consolidated Government authorizing the Mineral Board to act in its behalf

Bidder	Cash Payment	Price/Acre	Rental	Oil	Gas	Other

Legend
08040074
DRG24000



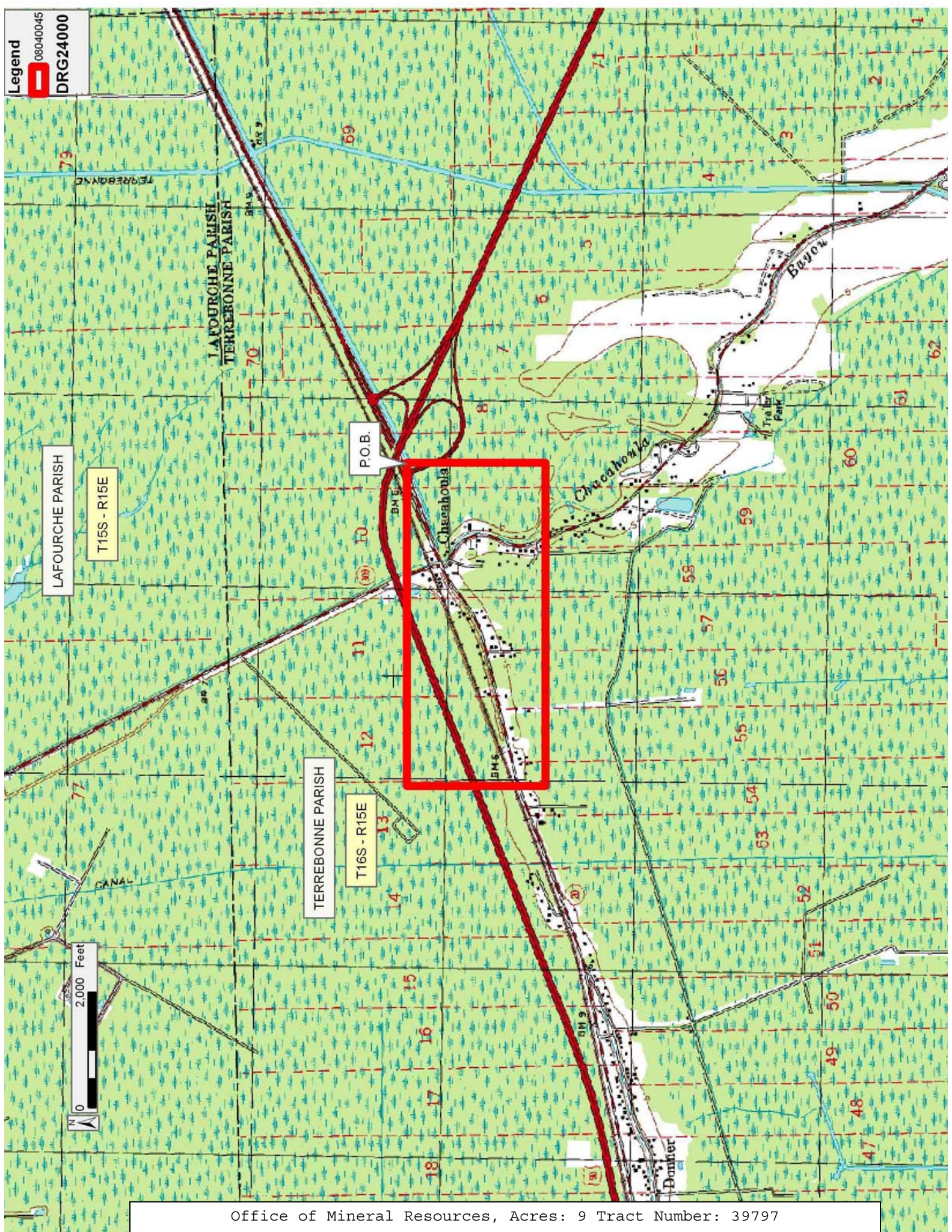
TRACT 39797 - Terrebonne Parish, Louisiana

A certain Tract of land, excluding the beds and bottoms of all navigable waters, belonging to and not presently under mineral lease from Louisiana Department Of Transportation And Development on April 9, 2008, being more fully described as follows: Beginning at a point having Coordinates of X = 2,136,001.33 and Y = 378,717.11; thence South 2,400.00 feet to a point having Coordinates of X = 2,136,001.33 and Y = 376,317.11; thence West 5,600.00 feet to a point having Coordinates of X = 2,130,401.33 and Y = 376,317.11; thence North 2,400.00 feet to a point having Coordinates of X = 2,130,401.33 and Y = 378,717.11; thence East 5,600.00 feet to the point of beginning, containing approximately **9 acres**, all as more particularly outlined on a plat on file in the Office of Mineral Resources, Department of Natural Resources. The description is based on information provided by the State Agency regarding location and ownership of surface and mineral rights. All bearings, distances and coordinates, if applicable, are based on Louisiana Coordinate System of 1927, (North or South Zone).

NOTE: The above description of the Tract nominated for lease has been provided and corrected, where required, exclusively by the nomination party. Any mineral lease selected from this Tract and awarded by the Louisiana State Mineral Board shall be without warranty of any kind, either express, implied, or statutory, including, but not limited to, the implied warranties of merchantability and fitness for a particular purpose. Should the mineral lease awarded by the Louisiana State Mineral Board be subsequently modified, cancelled or abrogated due to the existence of conflicting leases, operating agreements, private claims or other future obligations or conditions which may affect all or any portion of the leased Tract, it shall not relieve the Lessee of the obligation to pay any bonus due thereon to the Louisiana State Mineral Board, nor shall the Louisiana State Mineral Board be obligated to refund any consideration paid by the Lessor prior to such modification, cancellation, or abrogation, including, but not limited to, bonuses, rentals and royalties.

Applicant: ACL ENERGY to Agency and by Resolution from the Louisiana Department Of Transportation And Development authorizing the Mineral Board to act in its behalf

Bidder	Cash Payment	Price/Acre	Rental	Oil	Gas	Other



TRACT 39798 - Terrebonne Parish, Louisiana

A certain Tract of land, excluding the beds and bottoms of all navigable waters, belonging to and not presently under mineral lease from Louisiana Department Of Transportation And Development on April 9, 2008, being more fully described as follows: Beginning at a point having Louisiana Coordinates of X = 2,130,401.33 and Y = 376,917.11; thence South 2,400.00 feet to a point having Coordinates of X = 2,130,401.33 and Y = 374,517.11; thence West 5,600.00 feet to a point having Coordinates of X = 2,124,801.33 and Y = 374,517.11; thence North 2,400.00 feet to a point having Coordinates of X = 2,124,801.33 and Y = 376,917.11; thence East 5,600.00 feet to the point of beginning, containing approximately **8 acres**, all as more particularly outlined on a plat on file in the Office of Mineral Resources, Department of Natural Resources. The description is based on information provided by the State Agency regarding location and ownership of surface and mineral rights. All bearings, distances and coordinates, if applicable, are based on Louisiana Coordinate System of 1927, (North or South Zone).

NOTE: The above description of the Tract nominated for lease has been provided and corrected, where required, exclusively by the nomination party. Any mineral lease selected from this Tract and awarded by the Louisiana State Mineral Board shall be without warranty of any kind, either express, implied, or statutory, including, but not limited to, the implied warranties of merchantability and fitness for a particular purpose. Should the mineral lease awarded by the Louisiana State Mineral Board be subsequently modified, cancelled or abrogated due to the existence of conflicting leases, operating agreements, private claims or other future obligations or conditions which may affect all or any portion of the leased Tract, it shall not relieve the Lessee of the obligation to pay any bonus due thereon to the Louisiana State Mineral Board, nor shall the Louisiana State Mineral Board be obligated to refund any consideration paid by the Lessor prior to such modification, cancellation, or abrogation, including, but not limited to, bonuses, rentals and royalties.

Applicant: ACL ENERGY to Agency and by Resolution from the Louisiana Department Of Transportation And Development authorizing the Mineral Board to act in its behalf

Bidder	Cash Payment	Price/Acre	Rental	Oil	Gas	Other

