

TRACT 39775 - St. Mary and Terrebonne Parishes, Louisiana

All of the lands now or formerly constituting the beds and bottoms of all water bodies of every nature and description as to which title is vested in the State of Louisiana, together with all islands arising therein and other lands formed by accretion or by reliction, where allowed by law, excepting tax adjudicated lands, and not presently under mineral lease on April 9, 2008, situated in St. Mary and Terrebonne Parishes, Louisiana, and more particularly described as follows: Beginning at a point on the Southwest corner of State Lease No. 19444 having Coordinates of X = 2,014,566.70 and Y = 317,136.54; thence East along the Southern boundary of said State Lease No. 19444 a distance of 7,395.49 feet to a point having Coordinates of X = 2,021,962.19 and Y = 317,136.54; thence South 0 degrees 06 minutes 37 seconds East a distance of 13,606.70 feet to a point having Coordinates of X = 2,021,988.41 and Y = 303,529.87; thence South 89 degrees 40 minutes 35 seconds West a distance of 7,421.83 feet to a point having Coordinates of X = 2,014,566.70 and Y = 303,487.94; thence North a distance of 13,648.60 feet to the Point of Beginning containing approximately **1279 acres**, all as more particularly outlined on a plat on file in the Office of Mineral Resources, Department of Natural Resources. All bearings, distances and coordinates are based on Louisiana Coordinate System of 1927, (North or South Zone), where applicable.

NOTE: The above description of the Tract nominated for lease has been provided and corrected, where required, exclusively by the nomination party. Any mineral lease selected from this Tract and awarded by the Louisiana State Mineral Board shall be without warranty of any kind, either express, implied, or statutory, including, but not limited to, the implied warranties of merchantability and fitness for a particular purpose. Should the mineral lease awarded by the Louisiana State Mineral Board be subsequently modified, cancelled or abrogated due to the existence of conflicting leases, operating agreements, private claims or other future obligations or conditions which may affect all or any portion of the leased Tract, it shall not relieve the Lessee of the obligation to pay any bonus due thereon to the Louisiana State Mineral Board, nor shall the Louisiana State Mineral Board be obligated to refund any consideration paid by the Lessor prior to such modification, cancellation, or abrogation, including, but not limited to, bonuses, rentals and royalties.

NOTE: The State of Louisiana does hereby reserve, and this lease shall be subject to, the imprescriptible right of surface use in the nature of a servitude in favor of the Department of Natural Resources, including its Offices and Commissions, for the sole purpose of implementing, constructing, servicing and maintaining approved coastal zone management and/or restoration projects. Utilization of any and all rights derived under this lease by the mineral lessee, its agents, successors or assigns, shall not interfere with nor hinder the reasonable surface use by the Department of Natural Resources, its Offices or Commissions, as herein above reserved.

Applicant: PATRAICK L. DONOHUE PETROLEUM PROPERTIES, INC.

Bidder	Cash Payment	Price/ Acre	Rental	Oil	Gas	Other

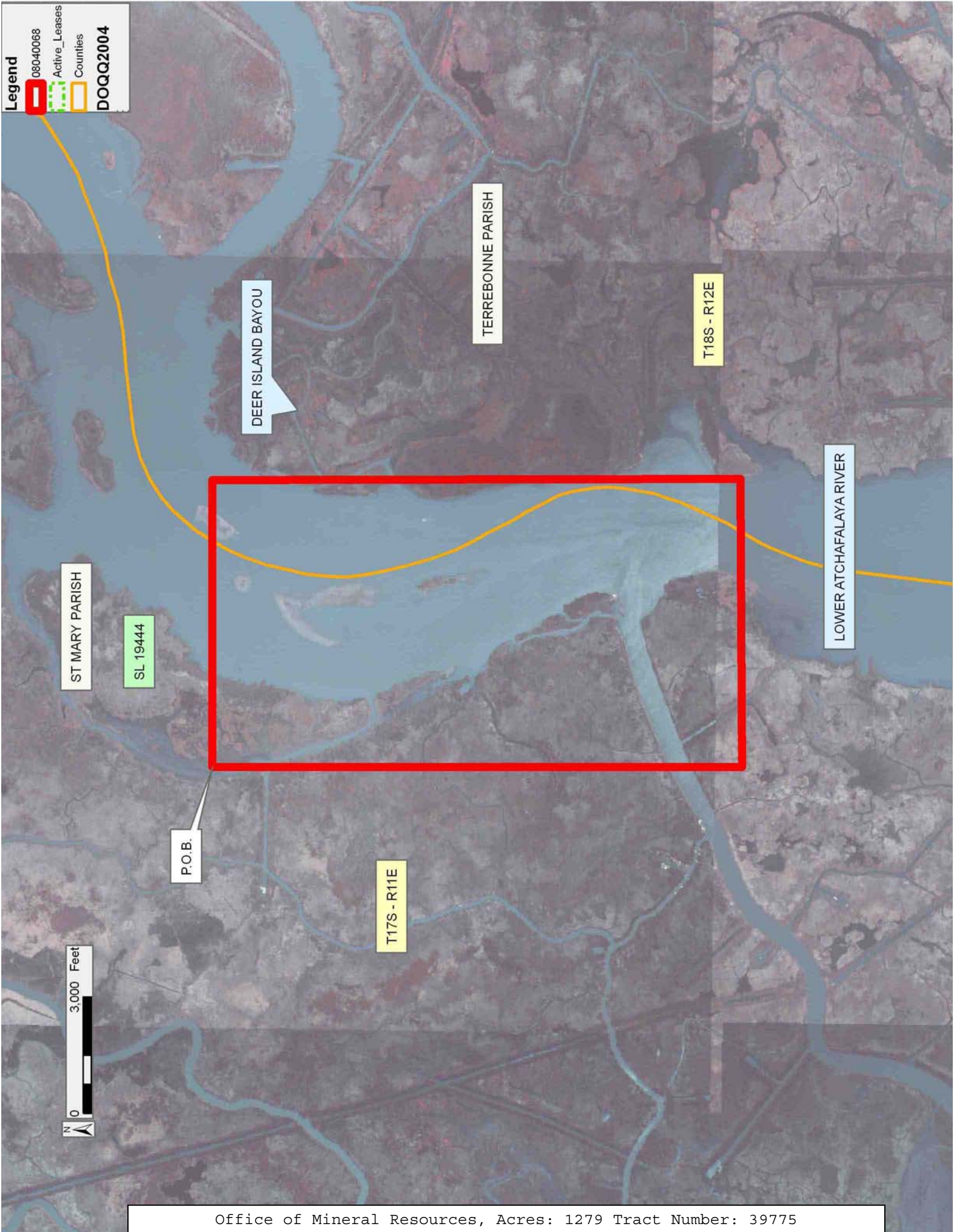
Legend

08040068

Active_Leases

Counties

DOQQ2004



TRACT 39776 - Terrebonne Parish, Louisiana

All of the lands now or formerly constituting the beds and bottoms of all water bodies of every nature and description as to which title is vested in the State of Louisiana, together with all islands arising therein and other lands formed by accretion or by reliction, where allowed by law, excepting tax adjudicated lands, and not presently under mineral lease on April 9, 2008, situated in Terrebonne Parish, Louisiana, and more particularly described as follows: Beginning at a point having Coordinates of X=2,021,964.98 and Y=315,692.33; thence East 14,580.26 feet to a point having Coordinates of X = 2,036,545.23 and Y = 315,692.33; thence South 0 degrees 19 minutes 25 seconds East 7,464.12 feet to a point having Coordinates of X = 2,036,587.17 and Y = 308,268.32; thence South 89 degrees 53 minutes 23 seconds West a distance of 14,607.86 feet to a point having Coordinates of X = 2,021,979.34 and Y = 308,240.18; thence North 0 degrees 06 minutes 37 seconds West 7,452.17 feet to the Point of Beginning containing approximately **113 acres**, all as more particularly outlined on a plat on file in the Office of Mineral Resources, Department of Natural Resources. All bearings, distances and coordinates are based on Louisiana Coordinate System of 1927, (North or South Zone), where applicable.

NOTE: The above description of the Tract nominated for lease has been provided and corrected, where required, exclusively by the nomination party. Any mineral lease selected from this Tract and awarded by the Louisiana State Mineral Board shall be without warranty of any kind, either express, implied, or statutory, including, but not limited to, the implied warranties of merchantability and fitness for a particular purpose. Should the mineral lease awarded by the Louisiana State Mineral Board be subsequently modified, cancelled or abrogated due to the existence of conflicting leases, operating agreements, private claims or other future obligations or conditions which may affect all or any portion of the leased Tract, it shall not relieve the Lessee of the obligation to pay any bonus due thereon to the Louisiana State Mineral Board, nor shall the Louisiana State Mineral Board be obligated to refund any consideration paid by the Lessor prior to such modification, cancellation, or abrogation, including, but not limited to, bonuses, rentals and royalties.

NOTE: The State of Louisiana does hereby reserve, and this lease shall be subject to, the imprescriptible right of surface use in the nature of a servitude in favor of the Department of Natural Resources, including its Offices and Commissions, for the sole purpose of implementing, constructing, servicing and maintaining approved coastal zone management and/or restoration projects. Utilization of any and all rights derived under this lease by the mineral lessee, its agents, successors or assigns, shall not interfere with nor hinder the reasonable surface use by the Department of Natural Resources, its Offices or Commissions, as herein above reserved.

Applicant: PATRICK L. DONOHUE PETROLEUM PROPERTIES, INC.

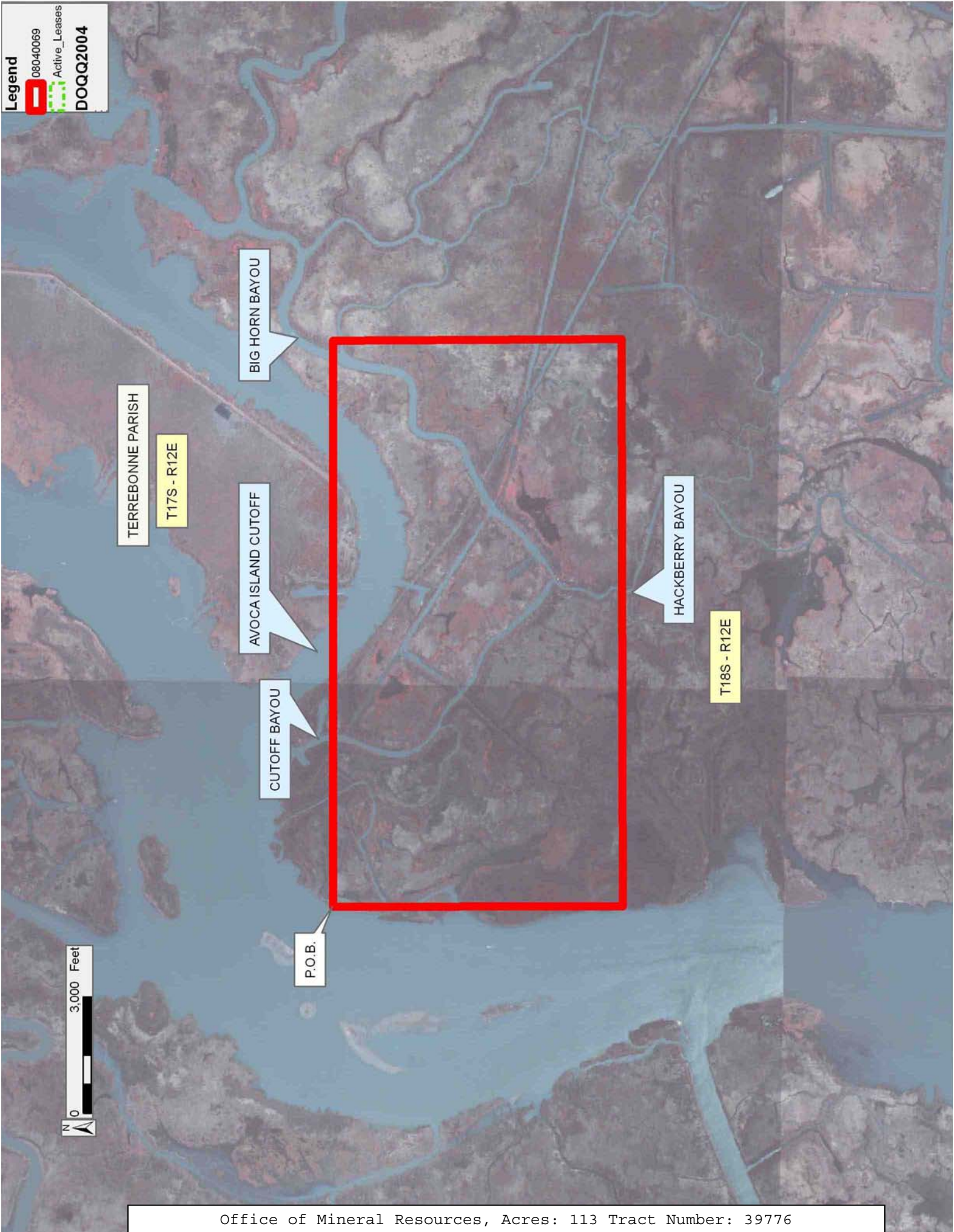
Bidder	Cash Payment	Price/ Acre	Rental	Oil	Gas	Other

Legend

08040069

Active_Leases

DOQQ2004



TRACT 39777 - Terrebonne Parish, Louisiana

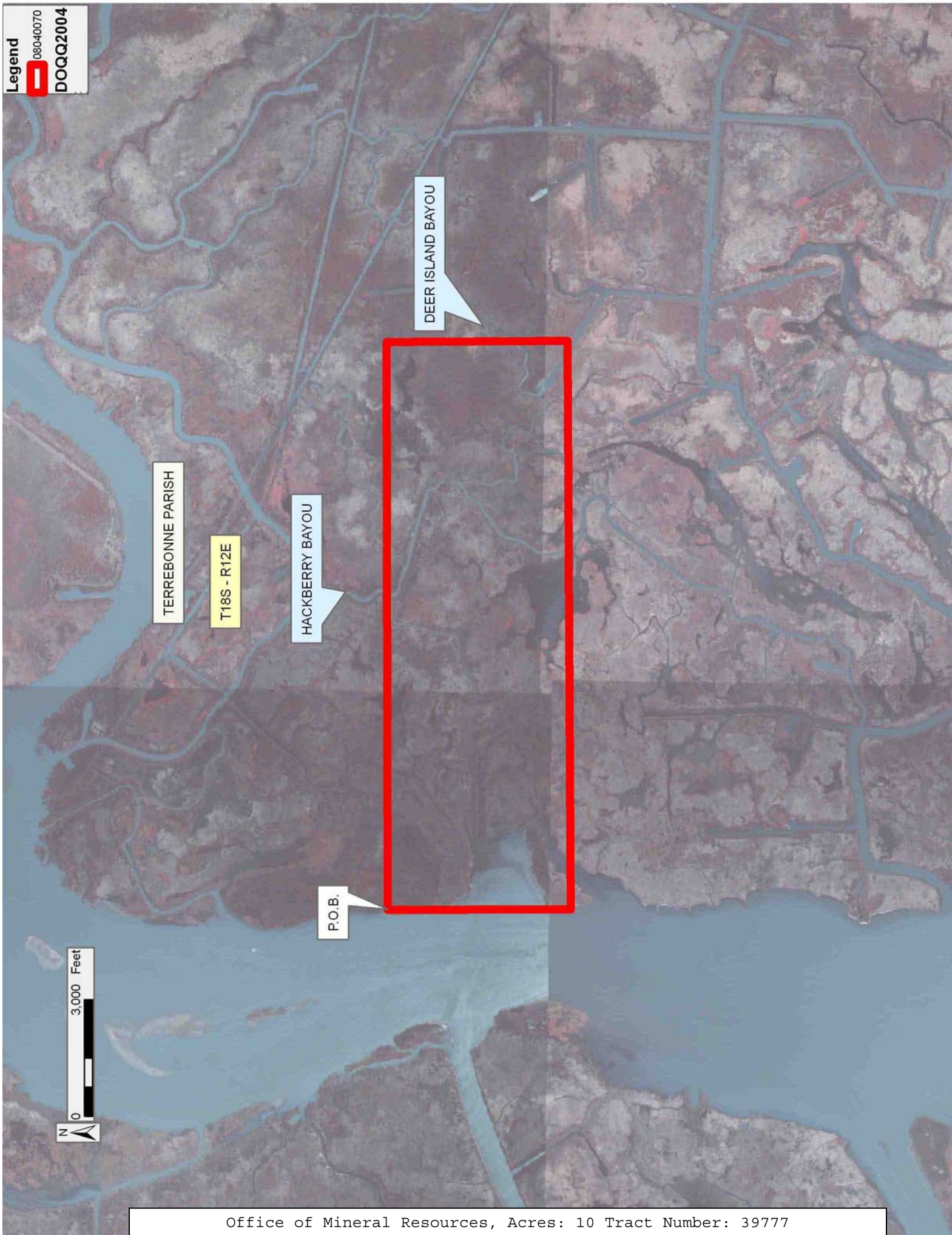
All of the lands now or formerly constituting the beds and bottoms of all water bodies of every nature and description as to which title is vested in the State of Louisiana, together with all islands arising therein and other lands formed by accretion or by reliction, where allowed by law, excepting tax adjudicated lands, and not presently under mineral lease on April 9, 2008, situated in Terrebonne Parish, Louisiana, and more particularly described as follows: Beginning at a point having Coordinates of X = 2,021,979.34 and Y = 308,240.18; thence North 89 degrees 53 minutes 23 seconds East a distance of 14,607.86 feet to a point having Coordinates of X = 2,036,587.17 and Y = 308,268.33; thence South 0 degrees 19 minutes 25 seconds East a distance of 4,655.91 feet to a point having Coordinates of X = 2,036,613.47 and Y=303,612.48; thence South 89 degrees 40 minutes 35 seconds West a distance of 14,625.29 feet to a point having Coordinates of X = 2,021,988.41 and Y = 303,529.87; thence North 0 degrees 06 minutes 38 seconds West a distance of 4,710.32 feet to the Point of beginning, containing approximately **10 acres**, all as more particularly outlined on a plat on file in the Office of Mineral Resources, Department of Natural Resources. All bearings, distances and coordinates are based on Louisiana Coordinate System of 1927, (North or South Zone), where applicable.

NOTE: The above description of the Tract nominated for lease has been provided and corrected, where required, exclusively by the nomination party. Any mineral lease selected from this Tract and awarded by the Louisiana State Mineral Board shall be without warranty of any kind, either express, implied, or statutory, including, but not limited to, the implied warranties of merchantability and fitness for a particular purpose. Should the mineral lease awarded by the Louisiana State Mineral Board be subsequently modified, cancelled or abrogated due to the existence of conflicting leases, operating agreements, private claims or other future obligations or conditions which may affect all or any portion of the leased Tract, it shall not relieve the Lessee of the obligation to pay any bonus due thereon to the Louisiana State Mineral Board, nor shall the Louisiana State Mineral Board be obligated to refund any consideration paid by the Lessor prior to such modification, cancellation, or abrogation, including, but not limited to, bonuses, rentals and royalties.

NOTE: The State of Louisiana does hereby reserve, and this lease shall be subject to, the imprescriptible right of surface use in the nature of a servitude in favor of the Department of Natural Resources, including its Offices and Commissions, for the sole purpose of implementing, constructing, servicing and maintaining approved coastal zone management and/or restoration projects. Utilization of any and all rights derived under this lease by the mineral lessee, its agents, successors or assigns, shall not interfere with nor hinder the reasonable surface use by the Department of Natural Resources, its Offices or Commissions, as herein above reserved.

Applicant: PATRICK L. DONOHUE PETROLEUM PROPERTIES, INC.

Bidder	Cash Payment	Price/ Acre	Rental	Oil	Gas	Other



TRACT 39778 - Plaquemines Parish, Louisiana

All of the lands now or formerly constituting the beds and bottoms of all water bodies of every nature and description as to which title is vested in the State of Louisiana, together with all islands arising therein and other lands formed by accretion or by reliction, where allowed by law, excepting tax adjudicated lands, and not presently under mineral lease on April 9, 2008, situated in Plaquemines Parish, Louisiana, and more particularly described as follows: Beginning at the Northernmost Southeast corner of State Lease No. 17447, as amended, having Coordinates of X = 2,584,393.47 and Y = 239,942.87; thence South 01 degrees 40 minutes 40 seconds East 2,283.00 feet to a point having Coordinates of X = 2,584,460.31 and Y = 237,660.85; thence South 88 degrees 19 minutes 20 seconds West 765.00 feet to a point having Coordinates of X = 2,583,695.64 and Y = 237,638.45; thence South 49 degrees 51 minutes 43 seconds West 2,341.76 feet to a point having Coordinates of X = 2,581,905.38 and Y = 236,128.87; thence South approximately 1,300 feet to a point on the North boundary of State Lease No. 3262 having a Coordinate of X = 2,581,905.38; thence Westerly approximately 4,535 feet along the North boundary of said State Lease No. 3262 to its intersection with the East boundary or a projection thereof of the Westernmost portion of State Lease No. 3279, as amended; thence Northerly, Northwesterly, Northerly, Northwesterly and Northeasterly along the meanders of the East boundary or a projection thereof of said Westernmost portion of said State Lease No. 3279 to its point of intersection with an East-West line having a Coordinate of Y = 237,853.47; thence East approximately 1,488 feet along said line to a point on the West boundary of the Middle portion of said State Lease No. 3279 having a Coordinate of Y = 237,853.47; thence Southerly, Southeasterly and Northerly along the meanders of the boundary of said Middle portion of said State Lease No. 3279 to its point of intersection with an East-West line having a Coordinate of Y = 237,853.47; thence East approximately 1,635 feet along said line to a point on the West boundary of a Eastern portion of said State Lease No. 3279 having a Coordinate of Y = 237,853.47; thence Southerly, Southwesterly, Southeasterly, Easterly, Northerly, Northeasterly and Northerly along the meanders of the boundary of said portion of said State Lease No. 3279 to its point of intersection with the South boundary or a projection thereof of said State Lease No. 17447; thence South 86 degrees 31 minutes 13 seconds East approximately 826 feet along the South boundary of said State Lease No. 17447 to its Southernmost Southeast corner having Coordinates of X = 2,582,656.27 and Y = 237,539.76; thence along the boundary of said State Lease No. 17447 the following courses: North 01 degrees 34 minutes 46 seconds East 1,323.16 feet to a corner having Coordinates of X = 2,582,692.74 and Y = 238,862.42; North 06 degrees 45 minutes 26 seconds West 398.52 feet to a corner having Coordinates of X = 2,582,645.85 and Y = 239,258.17; Northwesterly along a curve to the left having a radius of 877.70 feet and a center having Coordinates of X = 2,581,774.31 and Y = 239,154.38 to a corner having Coordinates of X = 2,582,239.48 and Y = 239,898.67; Northwesterly along a curve to the left having a radius of 1,029.75 feet and a center having Coordinates of X = 2,581,606.08 and Y = 239,086.77 to

a corner having Coordinates of X = 2,582,178.33 and Y = 239,942.87 and East approximately 530 feet to a point of intersection with the Easternmost portion of said State Lease No. 3279 having a Coordinate of Y = 239,942.87; thence Southeasterly and Northeasterly along the meanders of the boundary of said Easternmost portion of said State Lease No. 3279 to a point of intersection with the boundary of said State Lease No. 17447 having a Coordinate of Y = 239,942.87; thence East approximately 1,474 feet along the boundary of said State Lease No. 17447 to the point of beginning, **LESS AND EXCEPT** that portion, if any, of State Lease No. 3279, as amended, and State Lease No. 3262 that may lie within the above described tract, containing approximately **43 acres**, all as more particularly outlined on a plat on file in the Office of Mineral Resources, Department of Natural Resources. All bearings, distances and coordinates are based on Louisiana Coordinate System of 1927, (North or South Zone), where applicable.

NOTE: The above description of the Tract nominated for lease has been provided and corrected, where required, exclusively by the nomination party. Any mineral lease selected from this Tract and awarded by the Louisiana State Mineral Board shall be without warranty of any kind, either express, implied, or statutory, including, but not limited to, the implied warranties of merchantability and fitness for a particular purpose. Should the mineral lease awarded by the Louisiana State Mineral Board be subsequently modified, cancelled or abrogated due to the existence of conflicting leases, operating agreements, private claims or other future obligations or conditions which may affect all or any portion of the leased Tract, it shall not relieve the Lessee of the obligation to pay any bonus due thereon to the Louisiana State Mineral Board, nor shall the Louisiana State Mineral Board be obligated to refund any consideration paid by the Lessor prior to such modification, cancellation, or abrogation, including, but not limited to, bonuses, rentals and royalties.

NOTE: The State of Louisiana does hereby reserve, and this lease shall be subject to, the imprescriptible right of surface use in the nature of a servitude in favor of the Department of Natural Resources, including its Offices and Commissions, for the sole purpose of implementing, constructing, servicing and maintaining approved coastal zone management and/or restoration projects. Utilization of any and all rights derived under this lease by the mineral lessee, its agents, successors or assigns, shall not interfere with nor hinder the reasonable surface use by the Department of Natural Resources, its Offices or Commissions, as herein above reserved.

NOTE: The Department of Wildlife and Fisheries has designated certain areas in the coastal waters of the State of Louisiana as Oyster Seed Bed Areas. The exact location of those Seed Bed Areas must be obtained from the Department of Wildlife and Fisheries and any work done under a mineral lease from the State of Louisiana may necessarily be conducted in

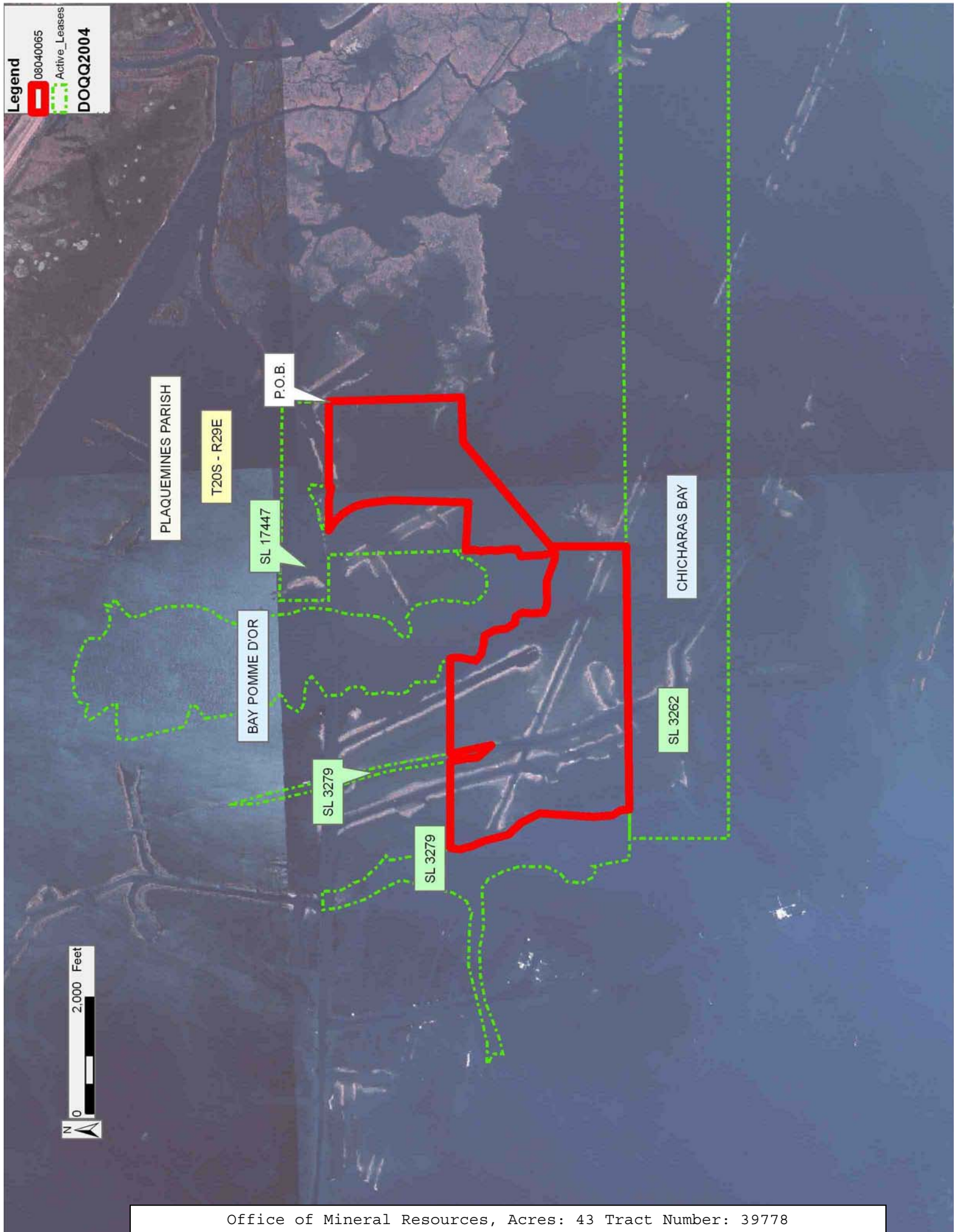
conformity with the rules and regulations promulgated by the said Department of Wildlife and Fisheries for Oyster Seed Bed Areas.

Applicant: THEOPHILUS OIL, GAS & LAND SERVICES, LLC

Bidder	Cash Payment	Price/ Acre	Rental	Oil	Gas	Other

Legend

08040065
Active_Leases
DOQQ2004



TRACT 39779 - Lafourche Parish, Louisiana

All of the lands now or formerly constituting the beds and bottoms of all water bodies of every nature and description as to which title is vested in the State of Louisiana, together with all islands arising therein and other lands formed by accretion or by reliction, where allowed by law, excepting tax adjudicated lands, and not presently under mineral lease on April 9, 2008, situated in Lafourche Parish, Louisiana, and more particularly described as follows: Beginning at point having Coordinates of X = 2,361,819.26 and Y = 218,106.97; thence North 88 degrees 53 minutes 51 seconds East 8,965.63 feet to a point having Coordinates of X = 2,370,783.23 and Y = 218,279.48; thence South 01 degrees 49 minutes 01 seconds East 12,518.91 feet to a point having Coordinates of X = 2,371,180.16 and Y = 205,766.86; thence South 88 degrees 37 minutes 15 seconds West 8,191.28 feet to a point having Coordinates of X = 2,362,991.25 and Y = 205,569.70; thence North 01 degrees 47 minutes 27 seconds West 7,676.06 feet to a point having Coordinates of X = 2,362,751.38 and Y = 213,242.01; thence North 10 degrees 50 minutes 47 seconds West 4,953.45 feet to the point of beginning, (This tract includes only waterbottoms claimed and owned by the state and specifically excludes any land which the state or Wildlife and Fisheries may claim or own and to which the mineral rights are vested in them), containing approximately **83 acres**, all as more particularly outlined on a plat on file in the Office of Mineral Resources, Department of Natural Resources. All bearings, distances and coordinates are based on Louisiana Coordinate System of 1927, (North or South Zone), where applicable.

NOTE: The above description of the Tract nominated for lease has been provided and corrected, where required, exclusively by the nomination party. Any mineral lease selected from this Tract and awarded by the Louisiana State Mineral Board shall be without warranty of any kind, either express, implied, or statutory, including, but not limited to, the implied warranties of merchantability and fitness for a particular purpose. Should the mineral lease awarded by the Louisiana State Mineral Board be subsequently modified, cancelled or abrogated due to the existence of conflicting leases, operating agreements, private claims or other future obligations or conditions which may affect all or any portion of the leased Tract, it shall not relieve the Lessee of the obligation to pay any bonus due thereon to the Louisiana State Mineral Board, nor shall the Louisiana State Mineral Board be obligated to refund any consideration paid by the Lessor prior to such modification, cancellation, or abrogation, including, but not limited to, bonuses, rentals and royalties.

NOTE: The State of Louisiana does hereby reserve, and this lease shall be subject to, the imprescriptible right of surface use in the nature of a servitude in favor of the Department of Natural Resources, including its Offices and Commissions, for the sole purpose of implementing, constructing, servicing and maintaining approved coastal zone management and/or restoration projects. Utilization of any and all rights derived under this lease by the mineral lessee, its agents, successors or assigns,

shall not interfere with nor hinder the reasonable surface use by the Department of Natural Resources, its Offices or Commissions, as herein above reserved.

NOTE: The Department of Wildlife and Fisheries has designated certain areas in the coastal waters of the State of Louisiana as Oyster Seed Bed Areas. The exact location of those Seed Bed Areas must be obtained from the Department of Wildlife and Fisheries and any work done under a mineral lease from the State of Louisiana may necessarily be conducted in conformity with the rules and regulations promulgated by the said Department of Wildlife and Fisheries for Oyster Seed Bed Areas.

Applicant: ROY G. BIV & ASSOCIATES

Bidder	Cash Payment	Price/ Acre	Rental	Oil	Gas	Other

Legend

08040043

Wildlife

DOQQ2004

0

3,000 Feet

N

LAFOURCHE PARISH

T21S - R22E

T21S - R23E

WISNER WMA

P.O.B.

SOUTHWESTERN LOUISIANA CANAL

Office of Mineral Resources, Acres: 83 Tract Number: 39779

TRACT 39780 - Lafourche Parish, Louisiana

All of the lands now or formerly constituting the beds and bottoms of all water bodies of every nature and description as to which title is vested in the State of Louisiana, together with all islands arising therein and other lands formed by accretion or by reliction, where allowed by law, excepting tax adjudicated lands, and not presently under mineral lease on April 9, 2008, situated in Lafourche Parish, Louisiana, and more particularly described as follows: Beginning at a point having Coordinates of X = 2,352,443.83 and Y = 205,315.75; thence North 03 degrees 30 minutes 00 seconds West 2,639.79 feet to a point having Coordinates of X = 2,352,282.67 and Y = 207,950.61; thence North 00 degrees 51 minutes 26 seconds West 5,009.74 feet to a point having Coordinates of X = 2,352,207.71 and Y = 212,959.79; thence Northwesterly approximately 4,663 feet to a point also being the Southeast corner of State Lease No. 1908, as amended; thence Easterly approximately 4,437 feet to a point on the West line of State Lease No. 18816 having Coordinates of X = 2,355,747.61 and Y = 217,945.76; thence along the boundary of said State Lease No. 18816 the following courses: South 1,077.45 feet and East 1,005.80 feet to a point on its South line having Coordinates of X = 2,356,753.41 and Y = 216,868.31; thence South 10 degrees 49 minutes 01 seconds East 3,835.74 feet to a point having Coordinates of X = 2,357,473.27 and Y = 213,100.73; thence South 01 degrees 48 minutes 18 seconds East 7,661.88 feet to a point having Coordinates of X = 2,357,714.61 and Y = 205,442.65; thence South 88 degrees 37 minutes 15 seconds West 5,272.31 feet to the point of beginning, (This lease includes only waterbottoms claimed and owned by the state and specifically excludes any land which the state may claim or own and to which the mineral rights are vested in the state), containing approximately **84 acres**, all as more particularly outlined on a plat on file in the Office of Mineral Resources, Department of Natural Resources. All bearings, distances and coordinates are based on Louisiana Coordinate System of 1927, (North or South Zone), where applicable.

NOTE: The above description of the Tract nominated for lease has been provided and corrected, where required, exclusively by the nomination party. Any mineral lease selected from this Tract and awarded by the Louisiana State Mineral Board shall be without warranty of any kind, either express, implied, or statutory, including, but not limited to, the implied warranties of merchantability and fitness for a particular purpose. Should the mineral lease awarded by the Louisiana State Mineral Board be subsequently modified, cancelled or abrogated due to the existence of conflicting leases, operating agreements, private claims or other future obligations or conditions which may affect all or any portion of the leased Tract, it shall not relieve the Lessee of the obligation to pay any bonus due thereon to the Louisiana State Mineral Board, nor shall the Louisiana State Mineral Board be obligated to refund any consideration paid by the Lessor prior to such modification, cancellation, or abrogation, including, but not limited to, bonuses, rentals and royalties.

NOTE: The State of Louisiana does hereby reserve, and this lease shall be subject to, the imprescriptible right of surface use in the nature of a servitude in favor of the Department of Natural Resources, including its Offices and Commissions, for the sole purpose of implementing, constructing, servicing and maintaining approved coastal zone management and/or restoration projects. Utilization of any and all rights derived under this lease by the mineral lessee, its agents, successors or assigns, shall not interfere with nor hinder the reasonable surface use by the Department of Natural Resources, its Offices or Commissions, as herein above reserved.

NOTE: The Department of Wildlife and Fisheries has designated certain areas in the coastal waters of the State of Louisiana as Oyster Seed Bed Areas. The exact location of those Seed Bed Areas must be obtained from the Department of Wildlife and Fisheries and any work done under a mineral lease from the State of Louisiana may necessarily be conducted in conformity with the rules and regulations promulgated by the said Department of Wildlife and Fisheries for Oyster Seed Bed Areas.

Applicant: ROY G. BIV & ASSOCIATES

Bidder	Cash Payment	Price/ Acre	Rental	Oil	Gas	Other

Legend

08040041

Active_Leases

DOQQ2004



TRACT 39781 - Lafourche Parish, Louisiana

All of the lands now or formerly constituting the beds and bottoms of all water bodies of every nature and description as to which title is vested in the State of Louisiana, together with all islands arising therein and other lands formed by accretion or by reliction, where allowed by law, excepting tax adjudicated lands, and not presently under mineral lease on April 9, 2008, situated in Lafourche Parish, Louisiana, and more particularly described as follows: Beginning at point on the East line of State Lease No. 18816 having Coordinates of X = 2,359,500.00 and Y = 218,045.39; thence North 88 degrees 28 minutes 44 seconds East 2,320.08 feet to a point having Coordinates of X = 2,361,819.26 and Y = 218,106.97; thence South 10 degrees 50 minutes 47 seconds East 4,953.45 feet to a point having Coordinates of X = 2,362,751.38 and Y = 213,242.01; thence South 01 degrees 47 minutes 27 seconds East 7,676.06 feet to a point having Coordinates of X = 2,362,991.25 and Y = 205,569.70; thence South 88 degrees 37 minutes 15 seconds West 5,278.17 feet to a point having Coordinates of X = 2,357,714.61 and Y = 205,442.65; thence North 01 degrees 48 minutes 18 seconds West 7,661.88 feet to a point having Coordinates of X = 2,357,473.27 and Y = 213,100.73; thence North 10 degrees 49 minutes 01 seconds West 3,835.74 feet to a point on the South line of said State Lease No. 18816 having Coordinates of X = 2,356,753.41 and Y = 216,868.31; thence along the boundary of said State Lease No. 18816 the following courses: East 2,746.59 feet and North 1,177.08 feet to the point of beginning, (This tract includes only waterbottoms claimed and owned by the state and specifically excludes any land which the state or Wildlife and Fisheries may claim or own and to which the mineral rights are vested in them), containing approximately **134 acres**, all as more particularly outlined on a plat on file in the Office of Mineral Resources, Department of Natural Resources. All bearings, distances and coordinates are based on Louisiana Coordinate System of 1927, (North or South Zone), where applicable.

NOTE: The above description of the Tract nominated for lease has been provided and corrected, where required, exclusively by the nomination party. Any mineral lease selected from this Tract and awarded by the Louisiana State Mineral Board shall be without warranty of any kind, either express, implied, or statutory, including, but not limited to, the implied warranties of merchantability and fitness for a particular purpose. Should the mineral lease awarded by the Louisiana State Mineral Board be subsequently modified, cancelled or abrogated due to the existence of conflicting leases, operating agreements, private claims or other future obligations or conditions which may affect all or any portion of the leased Tract, it shall not relieve the Lessee of the obligation to pay any bonus due thereon to the Louisiana State Mineral Board, nor shall the Louisiana State Mineral Board be obligated to refund any consideration paid by the Lessor prior to such modification, cancellation, or abrogation, including, but not limited to, bonuses, rentals and royalties.

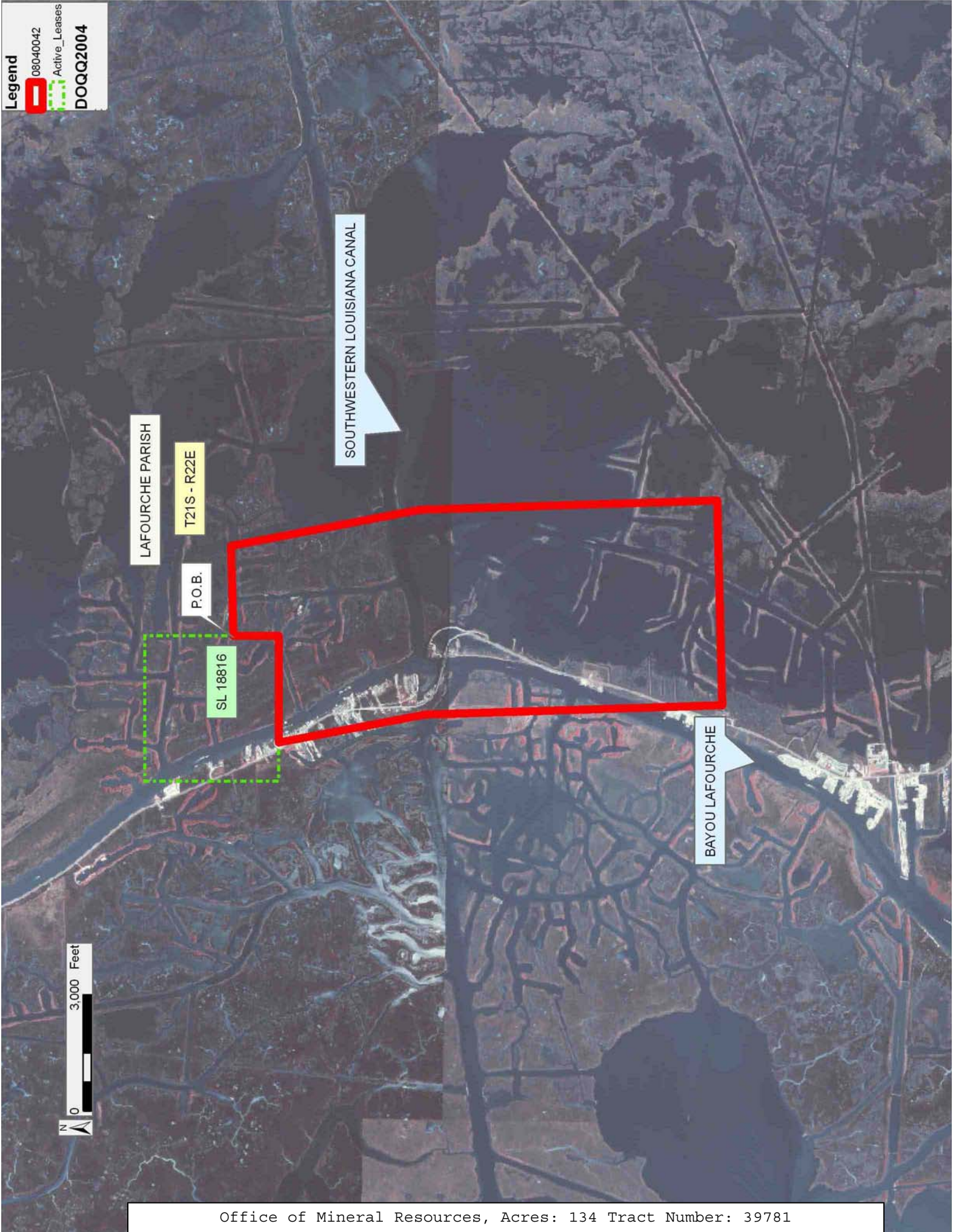
NOTE: The State of Louisiana does hereby reserve, and this lease shall be subject to, the imprescriptible right of surface use in the nature of a servitude in favor of the Department of Natural Resources, including its Offices and Commissions, for the sole purpose of implementing, constructing, servicing and maintaining approved coastal zone management and/or restoration projects. Utilization of any and all rights derived under this lease by the mineral lessee, its agents, successors or assigns, shall not interfere with nor hinder the reasonable surface use by the Department of Natural Resources, its Offices or Commissions, as herein above reserved.

NOTE: The Department of Wildlife and Fisheries has designated certain areas in the coastal waters of the State of Louisiana as Oyster Seed Bed Areas. The exact location of those Seed Bed Areas must be obtained from the Department of Wildlife and Fisheries and any work done under a mineral lease from the State of Louisiana may necessarily be conducted in conformity with the rules and regulations promulgated by the said Department of Wildlife and Fisheries for Oyster Seed Bed Areas.

Applicant: ROY G. BIV & ASSOCIATES

Bidder	Cash Payment	Price/ Acre	Rental	Oil	Gas	Other

Legend
08040042
Active_Leases
DOQQ2004



TRACT 39782 - Lafourche Parish, Louisiana

All of the lands now or formerly constituting the beds and bottoms of all water bodies of every nature and description as to which title is vested in the State of Louisiana, together with all islands arising therein and other lands formed by accretion or by reliction, where allowed by law, excepting tax adjudicated lands, and not presently under mineral lease on April 9, 2008, situated in Lafourche Parish, Louisiana, and more particularly described as follows: Beginning at a point having Coordinates of X = 2,347,198.23 and Y = 205,189.45; thence North 03 degrees 04 minutes 42 seconds West 2,623.93 feet to a point having Coordinates of X = 2,347,057.32 and Y = 207,809.59; thence North 01 degrees 19 minutes 01 seconds West 5,010.57 feet to a point having Coordinates of X = 2,346,942.17 and Y = 212,818.84; thence Northwesterly approximately 4,744 feet to a point on also being the Southwest corner of State Lease No. 1908, as amended; thence Easterly approximately 5,024 feet along the Southern boundary of said State Lease No. 1908 to its Southeast corner; thence Southeasterly approximately 4,663 feet to a point having Coordinates of X = 2,352,207.71 and Y = 212,959.79; thence South 00 degrees 51 minutes 26 seconds East 5,009.74 feet to a point having Coordinates of X = 2,352,282.67 and Y = 207,950.61; thence South 03 degrees 30 minutes 00 seconds East 2,639.79 feet to a point having Coordinates of X = 2,352,443.83 and Y = 205,315.75; thence South 88 degrees 37 minutes 15 seconds West 5,247.12 feet to the point of beginning, (This lease includes only waterbottoms claimed and owned by the state and specifically excludes any land which the state may claim or own and to which the mineral rights are vested in the state), containing approximately **274 acres**, all as more particularly outlined on a plat on file in the Office of Mineral Resources, Department of Natural Resources. All bearings, distances and coordinates are based on Louisiana Coordinate System of 1927, (North or South Zone), where applicable.

NOTE: The above description of the Tract nominated for lease has been provided and corrected, where required, exclusively by the nomination party. Any mineral lease selected from this Tract and awarded by the Louisiana State Mineral Board shall be without warranty of any kind, either express, implied, or statutory, including, but not limited to, the implied warranties of merchantability and fitness for a particular purpose. Should the mineral lease awarded by the Louisiana State Mineral Board be subsequently modified, cancelled or abrogated due to the existence of conflicting leases, operating agreements, private claims or other future obligations or conditions which may affect all or any portion of the leased Tract, it shall not relieve the Lessee of the obligation to pay any bonus due thereon to the Louisiana State Mineral Board, nor shall the Louisiana State Mineral Board be obligated to refund any consideration paid by the Lessor prior to such modification, cancellation, or abrogation, including, but not limited to, bonuses, rentals and royalties.

NOTE: The State of Louisiana does hereby reserve, and this lease shall be subject to, the imprescriptible right of surface use in the nature of a

servitude in favor of the Department of Natural Resources, including its Offices and Commissions, for the sole purpose of implementing, constructing, servicing and maintaining approved coastal zone management and/or restoration projects. Utilization of any and all rights derived under this lease by the mineral lessee, its agents, successors or assigns, shall not interfere with nor hinder the reasonable surface use by the Department of Natural Resources, its Offices or Commissions, as herein above reserved.

NOTE: The Department of Wildlife and Fisheries has designated certain areas in the coastal waters of the State of Louisiana as Oyster Seed Bed Areas. The exact location of those Seed Bed Areas must be obtained from the Department of Wildlife and Fisheries and any work done under a mineral lease from the State of Louisiana may necessarily be conducted in conformity with the rules and regulations promulgated by the said Department of Wildlife and Fisheries for Oyster Seed Bed Areas.

Applicant: ROY G. BIV & ASSOCIATES

Bidder	Cash Payment	Price/ Acre	Rental	Oil	Gas	Other

Legend

08040040
Active_Leases
DOQQ2004



TRACT 39783 - Terrebonne Parish, Louisiana

All of the lands now or formerly constituting the beds and bottoms of all water bodies of every nature and description as to which title is vested in the State of Louisiana, together with all islands arising therein and other lands formed by accretion or by reliction, where allowed by law, excepting tax adjudicated lands, and not presently under mineral lease on April 9, 2008, situated in Terrebonne Parish, Louisiana, and more particularly described as follows: Beginning at a point on the Southern boundary of a portion of State Lease No. 199, as amended, having Coordinates of X = 2,275,192.92 and Y = 187,016.22; thence along the boundary of said State Lease No. 199 the following courses: North 89 degrees 34 minutes 50 seconds East 6,118.19 feet to a corner having Coordinates of X = 2,281,310.94 and Y = 187,061.00; North 00 degrees 25 minutes 10 seconds West 2,955.66 feet to a corner having Coordinates of X = 2,281,289.30 and Y = 190,016.58; South 89 degrees 34 minutes 50 seconds West 2,600.00 feet to a corner having Coordinates of X = 2,278,689.37 and Y = 189,997.55; North 00 degrees 25 minutes 10 seconds West 600.00 feet to a corner having Coordinates 2,278,684.98 and Y = 190,597.53; South 89 degrees 34 minutes 50 seconds West 1,023.22 feet to a corner having Coordinates of X = 2,277,661.79 and Y = 190,590.04; North 00 degrees 25 minutes 10 seconds West 1,349.35 feet to a corner having Coordinates of X = 2,277,651.91 and Y = 191,939.35; North 89 degrees 34 minutes 50 seconds East 2,220.03 feet to a corner having Coordinates of X = 2,279,871.88 and Y = 191,955.60; North 00 degrees 25 minutes 10 seconds West 2,140.16 feet to a corner having Coordinates of X = 2,279,856.21 and Y = 194,095.70; North 89 degrees 34 minutes 50 seconds East 453.49 feet to a corner having Coordinates 2,280,309.69 and Y = 194,099.02; South 00 degrees 25 minutes 10 seconds East 1,111.20 feet to a corner having Coordinates of X = 2,280,317.82 and Y = 192,987.85 and North 89 degrees 34 minutes 50 seconds East 4,000.01 feet to a corner having Coordinates 2,284,317.72 and Y = 193,017.13; thence East 4,000.00 feet to a point having Coordinates of X = 2,288,317.72 and Y = 193,017.13; thence South 10,433.91 feet to a point having Coordinates of X = 2,288,317.72 and Y = 182,583.22; thence West 13,124.80 feet to a point having Coordinates of X = 2,275,192.92 and Y = 182,583.22; thence North 4,433.00 feet to the point of beginning, containing approximately **2,499.06 acres**, all as more particularly outlined on a plat on file in the Office of Mineral Resources, Department of Natural Resources. All bearings, distances and coordinates are based on Louisiana Coordinate System of 1927, (North or South Zone), where applicable.

NOTE: The above description of the Tract nominated for lease has been provided and corrected, where required, exclusively by the nomination party. Any mineral lease selected from this Tract and awarded by the Louisiana State Mineral Board shall be without warranty of any kind, either express, implied, or statutory, including, but not limited to, the implied warranties of merchantability and fitness for a particular purpose. Should the mineral lease awarded by the Louisiana State Mineral Board be subsequently modified, cancelled or abrogated due to the

existence of conflicting leases, operating agreements, private claims or other future obligations or conditions which may affect all or any portion of the leased Tract, it shall not relieve the Lessee of the obligation to pay any bonus due thereon to the Louisiana State Mineral Board, nor shall the Louisiana State Mineral Board be obligated to refund any consideration paid by the Lessor prior to such modification, cancellation, or abrogation, including, but not limited to, bonuses, rentals and royalties.

NOTE: The State of Louisiana does hereby reserve, and this lease shall be subject to, the imprescriptible right of surface use in the nature of a servitude in favor of the Department of Natural Resources, including its Offices and Commissions, for the sole purpose of implementing, constructing, servicing and maintaining approved coastal zone management and/or restoration projects. Utilization of any and all rights derived under this lease by the mineral lessee, its agents, successors or assigns, shall not interfere with nor hinder the reasonable surface use by the Department of Natural Resources, its Offices or Commissions, as herein above reserved.

NOTE: The Department of Wildlife and Fisheries has designated certain areas in the coastal waters of the State of Louisiana as Oyster Seed Bed Areas. The exact location of those Seed Bed Areas must be obtained from the Department of Wildlife and Fisheries and any work done under a mineral lease from the State of Louisiana may necessarily be conducted in conformity with the rules and regulations promulgated by the said Department of Wildlife and Fisheries for Oyster Seed Bed Areas.

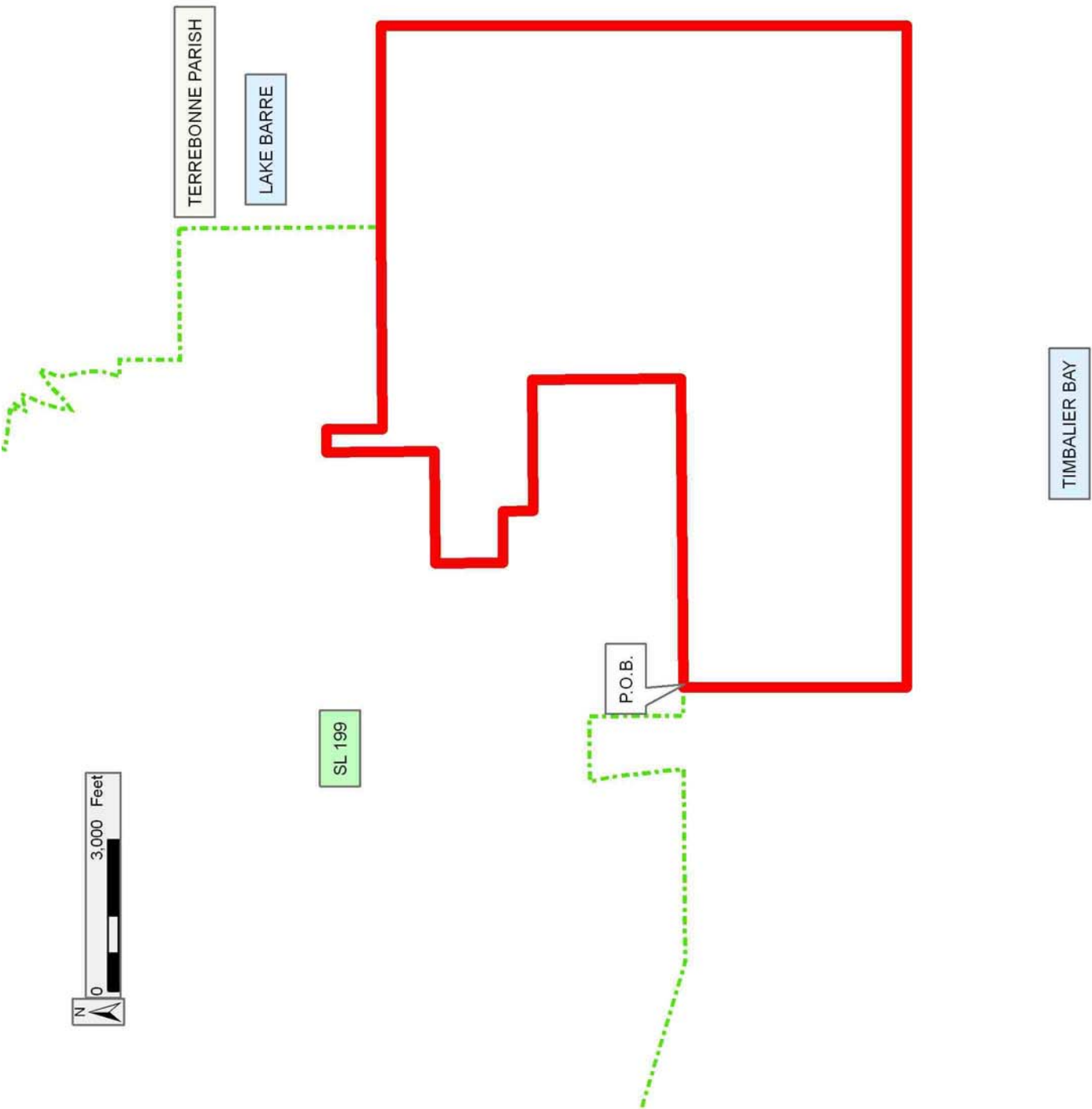
Applicant: THEOPHILUS OIL, GAS & LAND SERVICES, LLC

Bidder	Cash Payment	Price/ Acre	Rental	Oil	Gas	Other

Legend

 08040026

 Active Leases



TRACT 39784 - Portion of Blocks 115, and 116, South Timbalier Area, Revised, Terrebonne Parish, Louisiana

All of the lands now or formerly constituting the beds and bottoms of all water bodies of every nature and description as to which title is vested in the State of Louisiana, together with all islands arising therein and other lands formed by accretion or by reliction, where allowed by law, excepting tax adjudicated lands, and not presently under mineral lease on April 9, 2008, situated in Terrebonne Parish, Louisiana, and more particularly described as follows: Beginning at a point within Block 115, South Timbalier Area, Revised, having Coordinates of X = 2,252,550.00 and Y = 190,779.33; thence East 7,249.00 feet to a point having Coordinates of X = 2,259,799.00 and Y = 190,779.33; thence South 8,083.85 feet to a point within Block 116, South Timbalier Area, Revised, having Coordinates of X = 2,259,799.00 and Y = 182,695.48; thence West 7,249.00 feet to a point within said Block 115 having Coordinates of X = 2,252,550.00 and Y = 182,695.48; thence North 8,083.85 feet to the point of beginning, containing approximately **1,345.27 acres**, all as more particularly outlined on a plat on file in the Office of Mineral Resources, Department of Natural Resources. All bearings, distances and coordinates are based on Louisiana Coordinate System of 1927, (North or South Zone), where applicable.

NOTE: The above description of the Tract nominated for lease has been provided and corrected, where required, exclusively by the nomination party. Any mineral lease selected from this Tract and awarded by the Louisiana State Mineral Board shall be without warranty of any kind, either express, implied, or statutory, including, but not limited to, the implied warranties of merchantability and fitness for a particular purpose. Should the mineral lease awarded by the Louisiana State Mineral Board be subsequently modified, cancelled or abrogated due to the existence of conflicting leases, operating agreements, private claims or other future obligations or conditions which may affect all or any portion of the leased Tract, it shall not relieve the Lessee of the obligation to pay any bonus due thereon to the Louisiana State Mineral Board, nor shall the Louisiana State Mineral Board be obligated to refund any consideration paid by the Lessor prior to such modification, cancellation, or abrogation, including, but not limited to, bonuses, rentals and royalties.

NOTE: The State of Louisiana does hereby reserve, and this lease shall be subject to, the imprescriptible right of surface use in the nature of a servitude in favor of the Department of Natural Resources, including its Offices and Commissions, for the sole purpose of implementing, constructing, servicing and maintaining approved coastal zone management and/or restoration projects. Utilization of any and all rights derived under this lease by the mineral lessee, its agents, successors or assigns, shall not interfere with nor hinder the reasonable surface use by the Department of Natural Resources, its Offices or Commissions, as herein above reserved.

NOTE: The Department of Wildlife and Fisheries has designated certain areas in the coastal waters of the State of Louisiana as Oyster Seed Bed Areas. The exact location of those Seed Bed Areas must be obtained from the Department of Wildlife and Fisheries and any work done under a mineral lease from the State of Louisiana may necessarily be conducted in conformity with the rules and regulations promulgated by the said Department of Wildlife and Fisheries for Oyster Seed Bed Areas.

Applicant: THEOPHILUS OIL, GAS & LAND SERVICES, LLC

Bidder	Cash Payment	Price/ Acre	Rental	Oil	Gas	Other

