

**TRACT 39765 - Vermilion Parish, Louisiana**

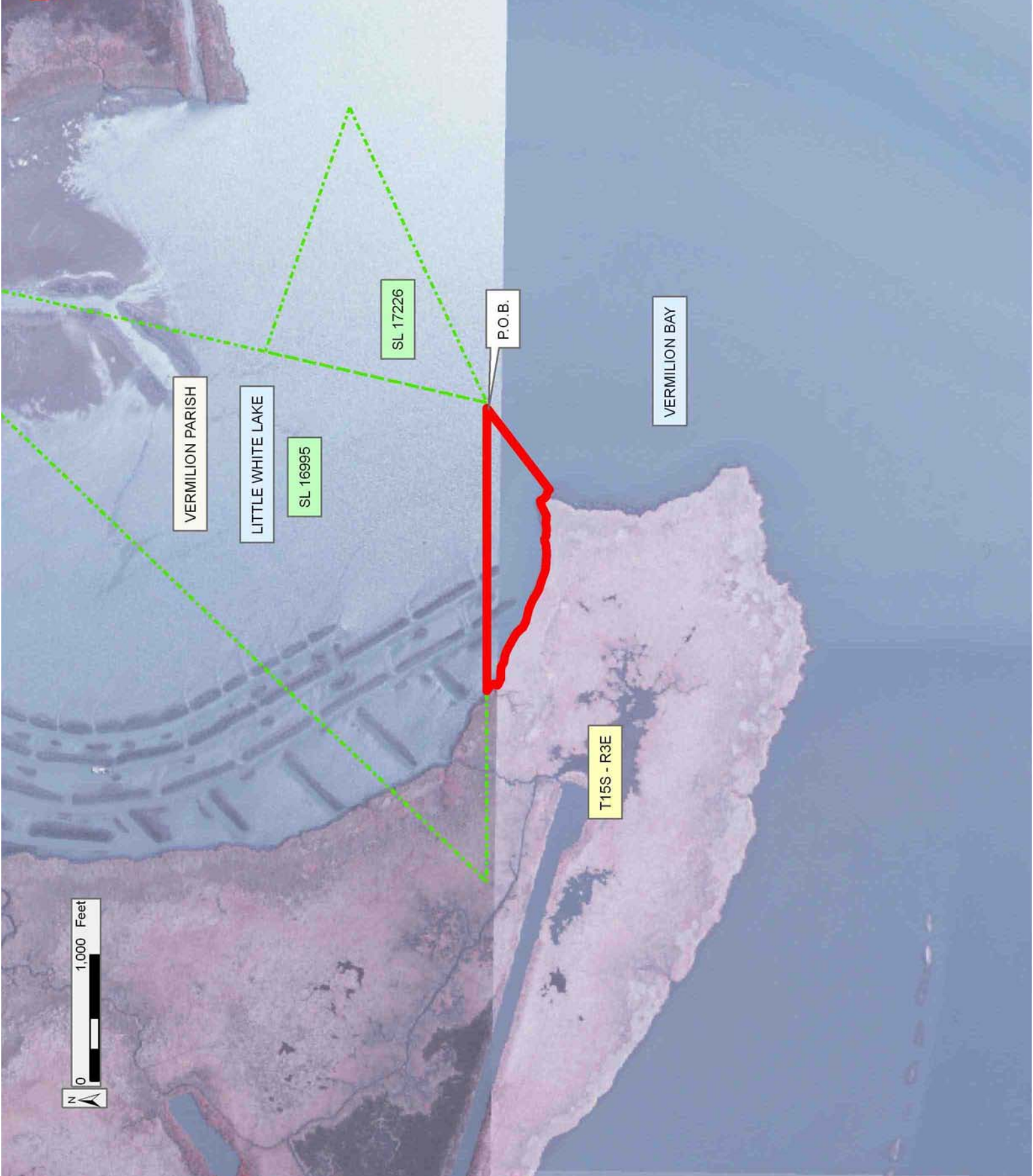
All of the lands now or formerly constituting the beds and bottoms of all water bodies of every nature and description as to which title is vested in the State of Louisiana, together with all islands arising therein and other lands formed by accretion or by reliction, where allowed by law, excepting tax adjudicated lands, and not presently under mineral lease on April 9, 2008, situated in Vermilion Parish, Louisiana, and more particularly described as follows: Beginning at a point on the South boundary of State Lease No. 16995 having Coordinates of X = 1,736,157.82 and Y = 393,900.00; thence South 52 degrees 42 minutes 44 seconds West approximately 815 feet to a point of intersection with the shoreline of the Little White Lake Legal Area; thence Westerly along the meanders of said shoreline of the Little White Lake Legal Area to a point of intersection with the South boundary of said State Lease No. 16995 having a Coordinate of Y = 393,900.00; thence East approximately 2,241 feet along the South boundary of said State Lease No. 16995 to the point of beginning, containing approximately 16 gross acres and approximately **10.4 net acres**, all as more particularly outlined on a plat on file in the Office of Mineral Resources, Department of Natural Resources. All bearings, distances and coordinates are based on Louisiana Coordinate System of 1927, (North or South Zone), where applicable.

NOTE: The above description of the Tract nominated for lease has been provided and corrected, where required, exclusively by the nomination party. Any mineral lease selected from this Tract and awarded by the Louisiana State Mineral Board shall be without warranty of any kind, either express, implied, or statutory, including, but not limited to, the implied warranties of merchantability and fitness for a particular purpose. Should the mineral lease awarded by the Louisiana State Mineral Board be subsequently modified, cancelled or abrogated due to the existence of conflicting leases, operating agreements, private claims or other future obligations or conditions which may affect all or any portion of the leased Tract, it shall not relieve the Lessee of the obligation to pay any bonus due thereon to the Louisiana State Mineral Board, nor shall the Louisiana State Mineral Board be obligated to refund any consideration paid by the Lessor prior to such modification, cancellation, or abrogation, including, but not limited to, bonuses, rentals and royalties.

Applicant: MINERAL SERVICES, INC.

Bidder	Cash Payment	Price/Acre	Rental	Oil	Gas	Other

**Legend**  
08040053  
Active\_Leases  
DOQQ2004



**TRACT 39766 - Vermilion Parish, Louisiana**

All of the lands now or formerly constituting the beds and bottoms of all water bodies of every nature and description as to which title is vested in the State of Louisiana, together with all islands arising therein and other lands formed by accretion or by reliction, where allowed by law, excepting tax adjudicated lands, and not presently under mineral lease on April 9, 2008, situated in Vermilion Parish, Louisiana, and more particularly described as follows: Beginning at the Northeast corner of State Lease No. 18888 having Coordinates of X = 1,778,360.29 and Y = 381,431.00; thence West 3,427.29 feet along the Northern boundary of said State Lease No. 18888 to the Northernmost Southeast corner of State Lease No. 18889 having Coordinates of X = 1,774,933.00 and Y = 381,431.00; thence along the boundary of said State Lease No. 18889 the following courses: North 941.00 feet to its Northeast corner having Coordinates of X = 1,774,933.00 and Y = 382,372.00; West 5,454.00 feet to its Northwest corner having Coordinates of X = 1,769,479.00 and Y = 382,372.00 and South 3,892.00 feet to its Southwest corner, also being the Westernmost Northwest of corner of said State Lease No. 18888 having Coordinates of X = 1,769,479.00 and Y = 378,480.00; thence South 380.00 feet along the Western boundary of said State Lease No. 18888 to its Southwest corner, also being a point on the North boundary of State Lease No. 18890 having Coordinates of X = 1,769,479.00 and Y = 378,100.00; thence West 1,979.00 feet along the North boundary of said State Lease No. 18890 to its Northwest corner having Coordinates of X = 1,767,500.00 and Y = 378,100.00; thence North 13,223.94 feet to a point having Coordinates of X = 1,767,500.00 and Y = 391,323.94; thence East 10,860.29 feet to a point having Coordinates of X = 1,778,360.29 and Y = 391,323.94; thence South 9,892.94 feet to the point of beginning, containing approximately **2,500.00 acres**, all as more particularly outlined on a plat on file in the Office of Mineral Resources, Department of Natural Resources. All bearings, distances and coordinates are based on Louisiana Coordinate System of 1927, (North or South Zone), where applicable.

NOTE: The above description of the Tract nominated for lease has been provided and corrected, where required, exclusively by the nomination party. Any mineral lease selected from this Tract and awarded by the Louisiana State Mineral Board shall be without warranty of any kind, either express, implied, or statutory, including, but not limited to, the implied warranties of merchantability and fitness for a particular purpose. Should the mineral lease awarded by the Louisiana State Mineral Board be subsequently modified, cancelled or abrogated due to the existence of conflicting leases, operating agreements, private claims or other future obligations or conditions which may affect all or any portion of the leased Tract, it shall not relieve the Lessee of the obligation to pay any bonus due thereon to the Louisiana State Mineral Board, nor shall the Louisiana State Mineral Board be obligated to refund any consideration paid by the Lessor prior to such modification, cancellation, or abrogation, including, but not limited to, bonuses, rentals and royalties.

NOTE: The State of Louisiana does hereby reserve, and this lease shall be subject to, the imprescriptible right of surface use in the nature of a servitude in favor of the Department of Natural Resources, including its Offices and Commissions, for the sole purpose of implementing, constructing, servicing and maintaining approved coastal zone management and/or restoration projects. Utilization of any and all rights derived under this lease by the mineral lessee, its agents, successors or assigns, shall not interfere with nor hinder the reasonable surface use by the Department of Natural Resources, its Offices or Commissions, as herein above reserved.

NOTE: The Department of Wildlife and Fisheries has designated certain areas in the coastal waters of the State of Louisiana as Oyster Seed Bed Areas. The exact location of those Seed Bed Areas must be obtained from the Department of Wildlife and Fisheries and any work done under a mineral lease from the State of Louisiana may necessarily be conducted in conformity with the rules and regulations promulgated by the said Department of Wildlife and Fisheries for Oyster Seed Bed Areas.

Applicant: MINERAL SERVICES, INC.

Bidder	Cash Payment	Price/Acre	Rental	Oil	Gas	Other

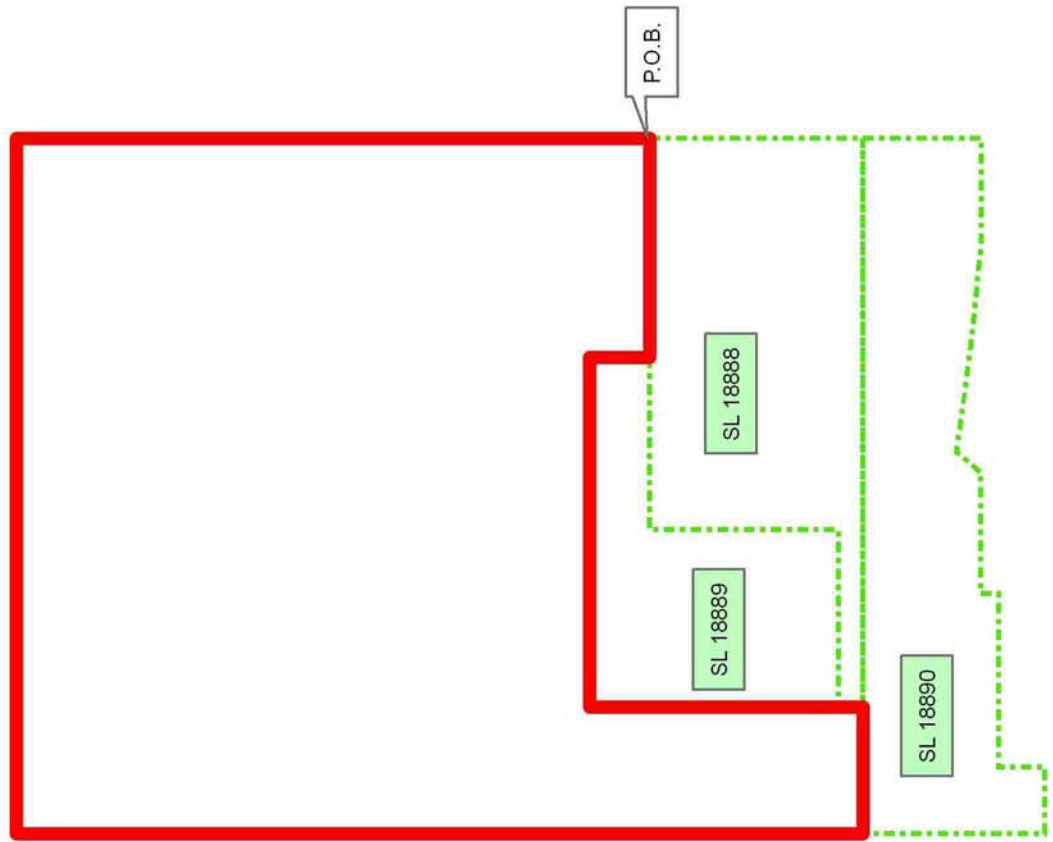
**Legend**

08040034  
Active\_Leases



VERMILION PARISH

VERMILION BAY



**TRACT 39767 - Vermilion Parish, Louisiana**

All of the lands now or formerly constituting the beds and bottoms of all water bodies of every nature and description as to which title is vested in the State of Louisiana, together with all islands arising therein and other lands formed by accretion or by reliction, where allowed by law, excepting tax adjudicated lands, and not presently under mineral lease on April 9, 2008, situated in Vermilion Parish, Louisiana, and more particularly described as follows: Beginning at a point having Coordinates of X = 1,748,405.33 and Y = 387,943.67; thence South 11,346.32 feet to a point having Coordinates of X = 1,748,405.33 and Y = 376,597.35; thence West 9,547.33 feet to a point having Coordinates of X = 1,738,858.00 and Y = 376,597.35; thence North 11,346.32 feet to a point having Coordinates of X = 1,738,858.00 and Y = 387,943.67; thence East 9,547.33 feet to the point of beginning, containing approximately **1,995 acres**, all as more particularly outlined on a plat on file in the Office of Mineral Resources, Department of Natural Resources. All bearings, distances and coordinates are based on Louisiana Coordinate System of 1927, (North or South Zone), where applicable.

NOTE: The above description of the Tract nominated for lease has been provided and corrected, where required, exclusively by the nomination party. Any mineral lease selected from this Tract and awarded by the Louisiana State Mineral Board shall be without warranty of any kind, either express, implied, or statutory, including, but not limited to, the implied warranties of merchantability and fitness for a particular purpose. Should the mineral lease awarded by the Louisiana State Mineral Board be subsequently modified, cancelled or abrogated due to the existence of conflicting leases, operating agreements, private claims or other future obligations or conditions which may affect all or any portion of the leased Tract, it shall not relieve the Lessee of the obligation to pay any bonus due thereon to the Louisiana State Mineral Board, nor shall the Louisiana State Mineral Board be obligated to refund any consideration paid by the Lessor prior to such modification, cancellation, or abrogation, including, but not limited to, bonuses, rentals and royalties.

NOTE: The State of Louisiana does hereby reserve, and this lease shall be subject to, the imprescriptible right of surface use in the nature of a servitude in favor of the Department of Natural Resources, including its Offices and Commissions, for the sole purpose of implementing, constructing, servicing and maintaining approved coastal zone management and/or restoration projects. Utilization of any and all rights derived under this lease by the mineral lessee, its agents, successors or assigns, shall not interfere with nor hinder the reasonable surface use by the Department of Natural Resources, its Offices or Commissions, as herein above reserved.

NOTE: The Department of Wildlife and Fisheries has designated certain areas in the coastal waters of the State of Louisiana as Oyster Seed Bed Areas. The exact location of those Seed Bed Areas must be obtained from

the Department of Wildlife and Fisheries and any work done under a mineral lease from the State of Louisiana may necessarily be conducted in conformity with the rules and regulations promulgated by the said Department of Wildlife and Fisheries for Oyster Seed Bed Areas.

Applicant: MINERAL SERVICES, INC.

Bidder	Cash Payment	Price/Acre	Rental	Oil	Gas	Other



**Legend**  
08040037  
Wildlife  
DOQQ2004



P.O.B.

T15S - R3E

VERMILION PARISH

VERMILION BAY

STATE WILDLIFE REFUGE





**TRACT 39768 - Vermilion Parish, Louisiana**

All of the lands now or formerly constituting the beds and bottoms of all water bodies of every nature and description as to which title is vested in the State of Louisiana, together with all islands arising therein and other lands formed by accretion or by reliction, where allowed by law, excepting tax adjudicated lands, and not presently under mineral lease on April 9, 2008, situated in Vermilion Parish, Louisiana, and more particularly described as follows: Beginning at a point having Coordinates of X = 1,748,405.33 and Y = 387,943.67; thence East 9,547.34 feet to a point having Coordinates of X = 1,757,952.67 and Y = 387,943.67; thence South 11,346.32 feet to a point having Coordinates of X = 1,757,952.67 and Y = 376,597.35; thence West 9,547.34 feet to a point having Coordinates of X = 1,748,405.33 and Y = 376,597.35; thence North 11,346.32 feet the point of beginning, containing approximately **2,486 acres**, all as more particularly outlined on a plat on file in the Office of Mineral Resources, Department of Natural Resources. All bearings, distances and coordinates are based on Louisiana Coordinate System of 1927, (North or South Zone), where applicable.

NOTE: The above description of the Tract nominated for lease has been provided and corrected, where required, exclusively by the nomination party. Any mineral lease selected from this Tract and awarded by the Louisiana State Mineral Board shall be without warranty of any kind, either express, implied, or statutory, including, but not limited to, the implied warranties of merchantability and fitness for a particular purpose. Should the mineral lease awarded by the Louisiana State Mineral Board be subsequently modified, cancelled or abrogated due to the existence of conflicting leases, operating agreements, private claims or other future obligations or conditions which may affect all or any portion of the leased Tract, it shall not relieve the Lessee of the obligation to pay any bonus due thereon to the Louisiana State Mineral Board, nor shall the Louisiana State Mineral Board be obligated to refund any consideration paid by the Lessor prior to such modification, cancellation, or abrogation, including, but not limited to, bonuses, rentals and royalties.

NOTE: The State of Louisiana does hereby reserve, and this lease shall be subject to, the imprescriptible right of surface use in the nature of a servitude in favor of the Department of Natural Resources, including its Offices and Commissions, for the sole purpose of implementing, constructing, servicing and maintaining approved coastal zone management and/or restoration projects. Utilization of any and all rights derived under this lease by the mineral lessee, its agents, successors or assigns, shall not interfere with nor hinder the reasonable surface use by the Department of Natural Resources, its Offices or Commissions, as herein above reserved.

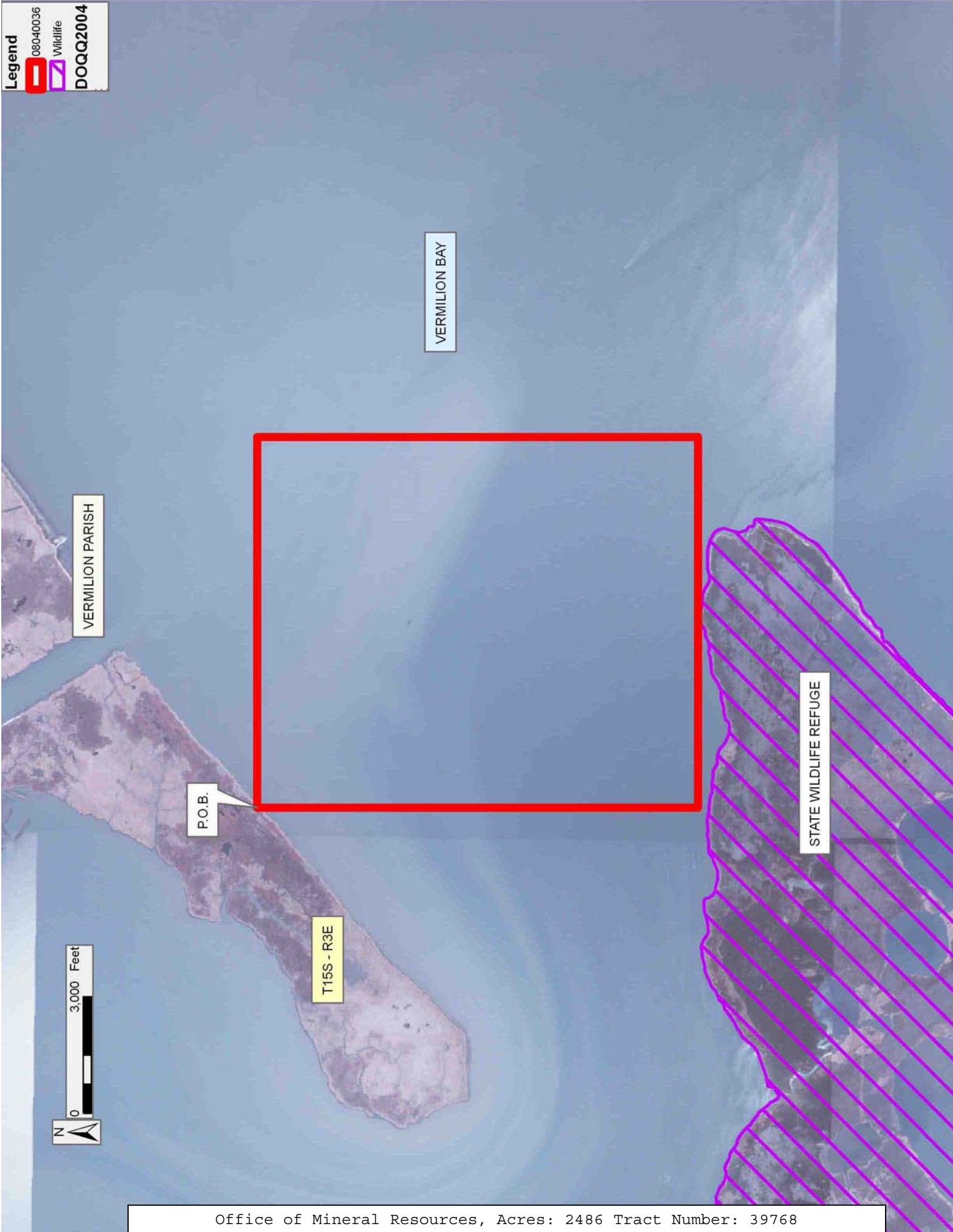
NOTE: The Department of Wildlife and Fisheries has designated certain areas in the coastal waters of the State of Louisiana as Oyster Seed Bed Areas. The exact location of those Seed Bed Areas must be obtained from

the Department of Wildlife and Fisheries and any work done under a mineral lease from the State of Louisiana may necessarily be conducted in conformity with the rules and regulations promulgated by the said Department of Wildlife and Fisheries for Oyster Seed Bed Areas.

Applicant: MINERAL SERVICES, INC.

Bidder	Cash Payment	Price/Acre	Rental	Oil	Gas	Other

**Legend**  
08040036  
Wildlife  
DOQQ2004



**TRACT 39769 - Vermilion Parish, Louisiana**

All of the lands now or formerly constituting the beds and bottoms of all water bodies of every nature and description as to which title is vested in the State of Louisiana, together with all islands arising therein and other lands formed by accretion or by reliction, where allowed by law, excepting tax adjudicated lands, and not presently under mineral lease on April 9, 2008, situated in Vermilion Parish, Louisiana, and more particularly described as follows: Beginning at a point having Coordinates of X = 1,767,500.00 and Y = 387,943.67; thence South 9,843.67 feet to the Northwest corner of State Lease No. 18890 having Coordinates of X = 1,767,500.00 and Y = 378,100.00; thence South 1,502.65 feet along the West boundary of said State Lease No. 18890 to a point having Coordinates of X = 1,767,500.00 and Y = 376,597.35; thence West 9,547.33 feet to a point having Coordinates of X = 1,757,952.67 and Y = 376,597.35; thence North 11,346.32 feet to a point having Coordinates of X = 1,757,952.67 and Y = 387,943.67; thence East 9,547.33 feet to the point of beginning, containing approximately **2,486.85 acres**, all as more particularly outlined on a plat on file in the Office of Mineral Resources, Department of Natural Resources. All bearings, distances and coordinates are based on Louisiana Coordinate System of 1927, (North or South Zone), where applicable.

NOTE: The above description of the Tract nominated for lease has been provided and corrected, where required, exclusively by the nomination party. Any mineral lease selected from this Tract and awarded by the Louisiana State Mineral Board shall be without warranty of any kind, either express, implied, or statutory, including, but not limited to, the implied warranties of merchantability and fitness for a particular purpose. Should the mineral lease awarded by the Louisiana State Mineral Board be subsequently modified, cancelled or abrogated due to the existence of conflicting leases, operating agreements, private claims or other future obligations or conditions which may affect all or any portion of the leased Tract, it shall not relieve the Lessee of the obligation to pay any bonus due thereon to the Louisiana State Mineral Board, nor shall the Louisiana State Mineral Board be obligated to refund any consideration paid by the Lessor prior to such modification, cancellation, or abrogation, including, but not limited to, bonuses, rentals and royalties.

NOTE: The State of Louisiana does hereby reserve, and this lease shall be subject to, the imprescriptible right of surface use in the nature of a servitude in favor of the Department of Natural Resources, including its Offices and Commissions, for the sole purpose of implementing, constructing, servicing and maintaining approved coastal zone management and/or restoration projects. Utilization of any and all rights derived under this lease by the mineral lessee, its agents, successors or assigns, shall not interfere with nor hinder the reasonable surface use by the Department of Natural Resources, its Offices or Commissions, as herein above reserved.

NOTE: The Department of Wildlife and Fisheries has designated certain areas in the coastal waters of the State of Louisiana as Oyster Seed Bed Areas. The exact location of those Seed Bed Areas must be obtained from the Department of Wildlife and Fisheries and any work done under a mineral lease from the State of Louisiana may necessarily be conducted in conformity with the rules and regulations promulgated by the said Department of Wildlife and Fisheries for Oyster Seed Bed Areas.

Applicant: MINERAL SERVICES, INC.

Bidder	Cash Payment	Price/Acre	Rental	Oil	Gas	Other



**Legend**  
08040035  
Active\_Leases



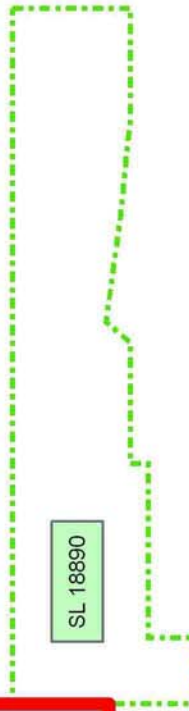
VERMILION PARISH

VERMILION BAY

P.O.B.



SL 18890



**TRACT 39770 - Vermilion Parish, Louisiana**

All of the lands now or formerly constituting the beds and bottoms of all water bodies of every nature and description as to which title is vested in the State of Louisiana, together with all islands arising therein and other lands formed by accretion or by reliction, where allowed by law, excepting tax adjudicated lands, and not presently under mineral lease on April 9, 2008, situated in Vermilion Parish, Louisiana, and more particularly described as follows: Beginning at a point on the West boundary of State Lease No. 18890 having Coordinates of X = 1,767,500.00 and Y = 376,597.35; thence South 1,338.15 feet along said West boundary of said State Lease No. 18890 to its Southwest corner located on the boundary of State Lease No. 4011, as amended, having Coordinates of X = 1,767,500.00 and Y = 375,259.20; thence along the boundary of said State Lease No. 4011 the following courses: West 668.68 feet to a point having Coordinates of X = 1,766,831.32 and Y = 375,259.20; South 00 degrees 13 minutes 30 seconds West 501.51 feet to a point having Coordinates of X = 1,766,829.35 and Y = 374,757.69; West 721.75 feet to a point having Coordinates of X = 1,766,107.60 and Y = 374,757.69; South 4,256.09 feet to a point having Coordinates of X = 1,766,107.60 and Y = 370,501.60; South 89 degrees 59 minutes 42 seconds West 5,804.04 feet to a point having Coordinates of X = 1,760,303.56 and Y = 370,501.10 and South 00 degrees 05 minutes 04 seconds West 5,187.26 feet to its Southwest corner having Coordinates of X = 1,760,295.92 and Y = 365,313.85; thence South 00 degrees 05 minutes 04 seconds West 4,786.97 feet to a point having Coordinates of X = 1,760,288.87 and Y = 360,526.89; thence West 4,426.14 feet to a point having Coordinates of X = 1,755,862.73 and Y = 360,526.89; thence North 16,070.46 feet to a point having Coordinates of X = 1,755,862.73 and Y = 376,597.35; thence East 11,637.27 feet to the point of beginning, containing approximately **2,500.00 acres**, all as more particularly outlined on a plat on file in the Office of Mineral Resources, Department of Natural Resources. All bearings, distances and coordinates are based on Louisiana Coordinate System of 1927, (North or South Zone), where applicable.

NOTE: The above description of the Tract nominated for lease has been provided and corrected, where required, exclusively by the nomination party. Any mineral lease selected from this Tract and awarded by the Louisiana State Mineral Board shall be without warranty of any kind, either express, implied, or statutory, including, but not limited to, the implied warranties of merchantability and fitness for a particular purpose. Should the mineral lease awarded by the Louisiana State Mineral Board be subsequently modified, cancelled or abrogated due to the existence of conflicting leases, operating agreements, private claims or other future obligations or conditions which may affect all or any portion of the leased Tract, it shall not relieve the Lessee of the obligation to pay any bonus due thereon to the Louisiana State Mineral Board, nor shall the Louisiana State Mineral Board be obligated to refund any consideration paid by the Lessor prior to such modification, cancellation, or abrogation, including, but not limited to, bonuses, rentals and royalties.

NOTE: The State of Louisiana does hereby reserve, and this lease shall be subject to, the imprescriptible right of surface use in the nature of a servitude in favor of the Department of Natural Resources, including its Offices and Commissions, for the sole purpose of implementing, constructing, servicing and maintaining approved coastal zone management and/or restoration projects. Utilization of any and all rights derived under this lease by the mineral lessee, its agents, successors or assigns, shall not interfere with nor hinder the reasonable surface use by the Department of Natural Resources, its Offices or Commissions, as herein above reserved.

NOTE: The Department of Wildlife and Fisheries has designated certain areas in the coastal waters of the State of Louisiana as Oyster Seed Bed Areas. The exact location of those Seed Bed Areas must be obtained from the Department of Wildlife and Fisheries and any work done under a mineral lease from the State of Louisiana may necessarily be conducted in conformity with the rules and regulations promulgated by the said Department of Wildlife and Fisheries for Oyster Seed Bed Areas.

Applicant: MINERAL SERVICES, INC.

Bidder	Cash Payment	Price/Acre	Rental	Oil	Gas	Other

**Legend**

- 08040038
- Wildlife
- Active\_Leases

**DOQQ2004**

VERMILION PARISH

VERMILION BAY

P.O.B.

SL 18890

SL 4011



STATE WILDLIFE REFUGE

**TRACT 39771 - St. Mary and Terrebonne Parishes, Louisiana**

All of the lands now or formerly constituting the beds and bottoms of all water bodies of every nature and description as to which title is vested in the State of Louisiana, together with all islands arising therein and other lands formed by accretion or by reliction, where allowed by law, excepting tax adjudicated lands, and not presently under mineral lease on April 9, 2008, situated in St. Mary and Terrebonne Parishes, Louisiana, and more particularly described as follows: Beginning at a point at the most southeasterly corner of State Lease No. 1337, as amended, having Coordinates of X = 2,031,880.00 and Y = 322,641.22; thence North 00 degrees 02 minutes 43 seconds West along the eastern boundary of said State Lease No. 1337, 6,343.65 feet to a point having Coordinates of X = 2,031,874.98 and Y = 328,984.87; thence East 4,595.16 feet to a point having Coordinates of X = 2,036,470.14 and Y = 328,984.87; thence South 0 degrees 19 minutes 25 seconds East a distance of 6,343.74 feet to a point having Coordinates of X = 2,036,505.98 and Y = 322,641.22; thence West a distance of 4,625.98 feet to the Point of Beginning containing approximately **277 acres**, all as more particularly outlined on a plat on file in the Office of Mineral Resources, Department of Natural Resources. All bearings, distances and coordinates are based on Louisiana Coordinate System of 1927, (North or South Zone), where applicable.

NOTE: The above description of the Tract nominated for lease has been provided and corrected, where required, exclusively by the nomination party. Any mineral lease selected from this Tract and awarded by the Louisiana State Mineral Board shall be without warranty of any kind, either express, implied, or statutory, including, but not limited to, the implied warranties of merchantability and fitness for a particular purpose. Should the mineral lease awarded by the Louisiana State Mineral Board be subsequently modified, cancelled or abrogated due to the existence of conflicting leases, operating agreements, private claims or other future obligations or conditions which may affect all or any portion of the leased Tract, it shall not relieve the Lessee of the obligation to pay any bonus due thereon to the Louisiana State Mineral Board, nor shall the Louisiana State Mineral Board be obligated to refund any consideration paid by the Lessor prior to such modification, cancellation, or abrogation, including, but not limited to, bonuses, rentals and royalties.

NOTE: The State of Louisiana does hereby reserve, and this lease shall be subject to, the imprescriptible right of surface use in the nature of a servitude in favor of the Department of Natural Resources, including its Offices and Commissions, for the sole purpose of implementing, constructing, servicing and maintaining approved coastal zone management and/or restoration projects. Utilization of any and all rights derived under this lease by the mineral lessee, its agents, successors or assigns, shall not interfere with nor hinder the reasonable surface use by the Department of Natural Resources, its Offices or Commissions, as herein above reserved.

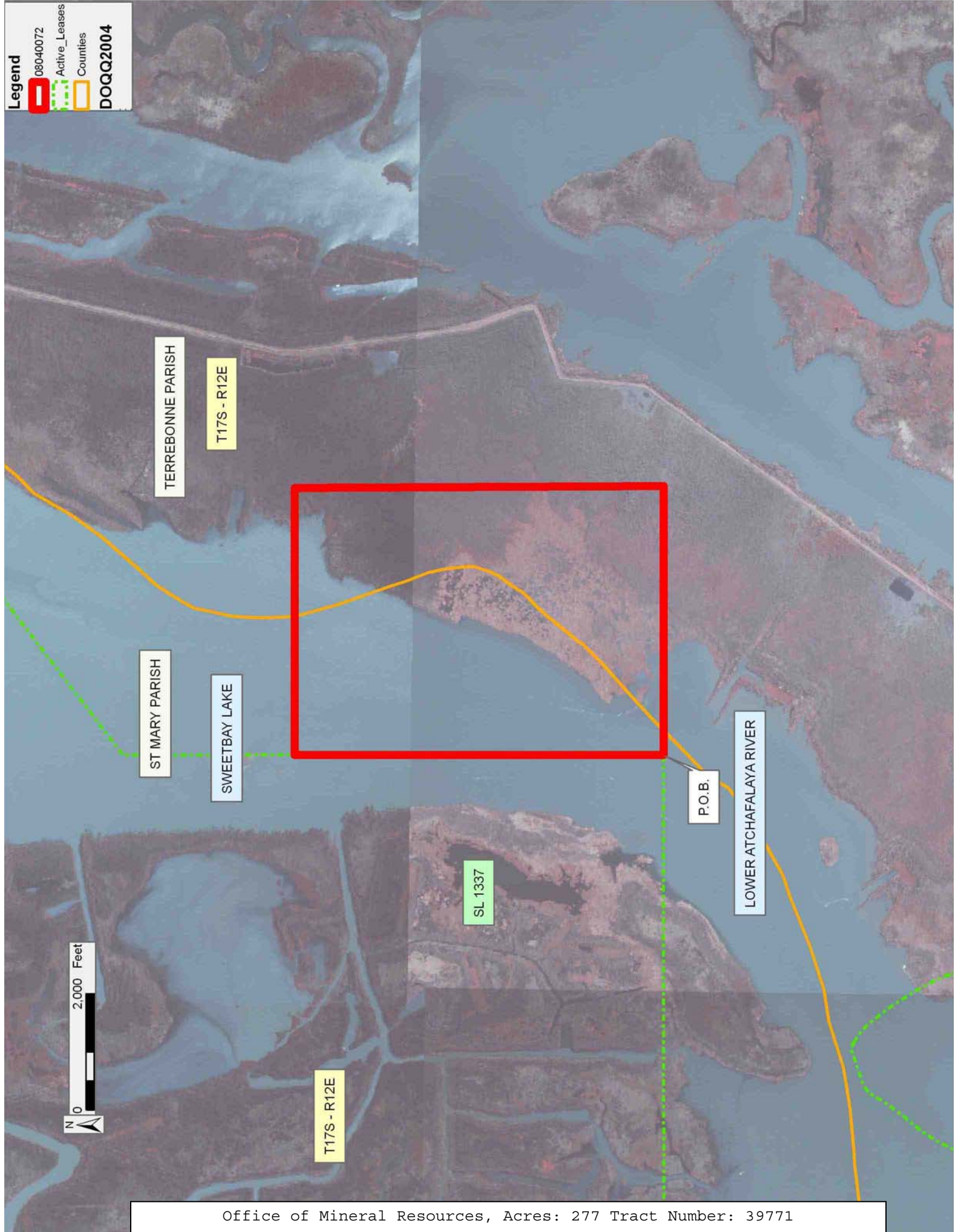


Applicant: PATRICK L. DONOHUE PETROLEUM PROPERTIES, INC.

Bidder	Cash Payment	Price/Acre	Rental	Oil	Gas	Other

**Legend**

- 08040072
- Active\_Leases
- Counties
- DOQQ2004



**TRACT 39772 - Terrebonne Parish, Louisiana**

All of the lands now or formerly constituting the beds and bottoms of all water bodies of every nature and description as to which title is vested in the State of Louisiana, together with all islands arising therein and other lands formed by accretion or by reliction, where allowed by law, excepting tax adjudicated lands, and not presently under mineral lease on April 9, 2008, situated in Terrebonne Parish, Louisiana, and more particularly described as follows: Beginning at a point having Coordinates of X = 2,070,872.44 and Y = 312,185.61; thence North 01 degrees 31 minutes 04 seconds West 5,297.05 feet to a point having Coordinates of X = 2,070,732.13 and Y = 317,480.80; thence South 89 degrees 32 minutes 44 seconds West 28.99 feet to a point having Coordinates of X = 2,070,703.14 and Y = 317,480.57; thence North 01 degrees 00 minutes 00 seconds West 5,248.21 feet to a point having Coordinates of X = 2,070,611.55 and Y = 322,727.99; thence North 89 degrees 21 minutes 11 seconds East 5,425.54 feet to a point having Coordinates of X = 2,076,036.74 and Y = 322,789.25; thence South 01 degrees 00 minutes 00 seconds East 5,264.11 feet to a point having Coordinates of X = 2,076,128.61 and Y = 317,525.94; thence North 89 degrees 33 minutes 54 seconds East 14.49 feet to a point having Coordinates of X = 2,076,143.10 and Y = 317,526.05; thence South 01 degrees 27 minutes 31 seconds East 5,294.97 to a point having Coordinates of X = 2,076,277.89 and Y = 312,232.80; thence South 89 degrees 29 minutes 59 seconds West 5,405.66 feet to the point of beginning, containing approximately **112 acres**, all as more particularly outlined on a plat on file in the Office of Mineral Resources, Department of Natural Resources. All bearings, distances and coordinates are based on Louisiana Coordinate System of 1927, (North or South Zone), where applicable.

NOTE: The above description of the Tract nominated for lease has been provided and corrected, where required, exclusively by the nomination party. Any mineral lease selected from this Tract and awarded by the Louisiana State Mineral Board shall be without warranty of any kind, either express, implied, or statutory, including, but not limited to, the implied warranties of merchantability and fitness for a particular purpose. Should the mineral lease awarded by the Louisiana State Mineral Board be subsequently modified, cancelled or abrogated due to the existence of conflicting leases, operating agreements, private claims or other future obligations or conditions which may affect all or any portion of the leased Tract, it shall not relieve the Lessee of the obligation to pay any bonus due thereon to the Louisiana State Mineral Board, nor shall the Louisiana State Mineral Board be obligated to refund any consideration paid by the Lessor prior to such modification, cancellation, or abrogation, including, but not limited to, bonuses, rentals and royalties.

NOTE: The State of Louisiana does hereby reserve, and this lease shall be subject to, the imprescriptible right of surface use in the nature of a servitude in favor of the Department of Natural Resources, including its Offices and Commissions, for the sole purpose of implementing, constructing, servicing and maintaining approved coastal zone management

and/or restoration projects. Utilization of any and all rights derived under this lease by the mineral lessee, its agents, successors or assigns, shall not interfere with nor hinder the reasonable surface use by the Department of Natural Resources, its Offices or Commissions, as herein above reserved.

NOTE: The above Tract is located upon a restricted scenic river and all operations in this area must be conducted in strict conformity with the regulations of the Corps of Engineers, U.S. Army.

Applicant: ROBERT A. SCHROEDER, INC.

Bidder	Cash Payment	Price/Acre	Rental	Oil	Gas	Other



TERREBONNE PARISH

T17S - R13E



P.O.B.

BAYOU PENCHANT

T18S - R13E





**TRACT 39773 - Terrebonne Parish, Louisiana**

All of the lands now or formerly constituting the beds and bottoms of all water bodies of every nature and description as to which title is vested in the State of Louisiana, together with all islands arising therein and other lands formed by accretion or by reliction, where allowed by law, excepting tax adjudicated lands, and not presently under mineral lease on April 9, 2008, situated in Terrebonne Parish, Louisiana, and more particularly described as follows: Beginning at a point having Coordinates of X = 2,070,872.44 and Y = 312,185.61; thence South 89 degrees 29 minutes 59 seconds West 5,405.66 feet to a point having Coordinates of X = 2,065,466.99 and Y = 312,138.41; thence Northerly approximately 5,294 feet to a point on the southern boundary of State of Louisiana State Lease No. 13346, as amended; thence along the boundary of said State Lease No. 13346 the following courses: Easterly approximately 122 feet to its Southeast corner and Northerly approximately 5,235 feet to its Northeast corner; thence Easterly approximately 5,260 feet to a point having Coordinates of X = 2,070,611.54 and Y = 322,727.99; thence South 01 degrees 00 minutes 00 seconds East 5,248.22 feet to a point having Coordinates of X = 2,070,703.14 and Y = 317,480.57; thence North 89 degrees 31 minutes 15 seconds East 28.99 feet to a point having Coordinates of X = 2,070,732.13 and Y = 317,480.80; thence South 01 degrees 31 minutes 04 seconds East 5,297.05 to the point of beginning, containing approximately **70 acres**, all as more particularly outlined on a plat on file in the Office of Mineral Resources, Department of Natural Resources. All bearings, distances and coordinates are based on Louisiana Coordinate System of 1927, (North or South Zone), where applicable.

NOTE: The above description of the Tract nominated for lease has been provided and corrected, where required, exclusively by the nomination party. Any mineral lease selected from this Tract and awarded by the Louisiana State Mineral Board shall be without warranty of any kind, either express, implied, or statutory, including, but not limited to, the implied warranties of merchantability and fitness for a particular purpose. Should the mineral lease awarded by the Louisiana State Mineral Board be subsequently modified, cancelled or abrogated due to the existence of conflicting leases, operating agreements, private claims or other future obligations or conditions which may affect all or any portion of the leased Tract, it shall not relieve the Lessee of the obligation to pay any bonus due thereon to the Louisiana State Mineral Board, nor shall the Louisiana State Mineral Board be obligated to refund any consideration paid by the Lessor prior to such modification, cancellation, or abrogation, including, but not limited to, bonuses, rentals and royalties.

NOTE: The State of Louisiana does hereby reserve, and this lease shall be subject to, the imprescriptible right of surface use in the nature of a servitude in favor of the Department of Natural Resources, including its Offices and Commissions, for the sole purpose of implementing, constructing, servicing and maintaining approved coastal zone management and/or restoration projects. Utilization of any and all rights derived

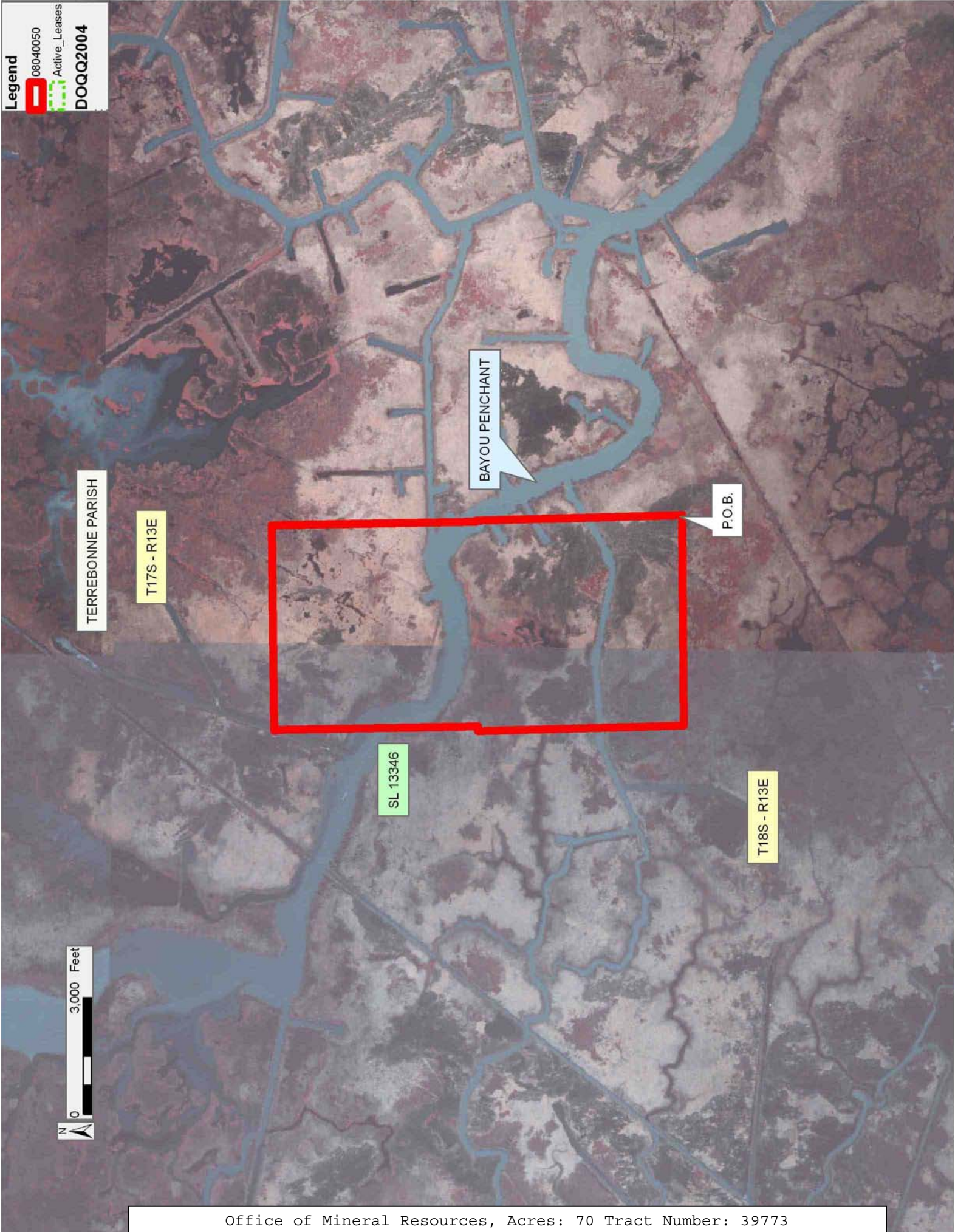
under this lease by the mineral lessee, its agents, successors or assigns, shall not interfere with nor hinder the reasonable surface use by the Department of Natural Resources, its Offices or Commissions, as herein above reserved.

NOTE: The above Tract is located upon a restricted scenic river and all operations in this area must be conducted in strict conformity with the regulations of the Corps of Engineers, U.S. Army.

Applicant: ROBERT A. SCHROEDER, INC.

Bidder	Cash Payment	Price/Acre	Rental	Oil	Gas	Other

**Legend**  
08040050  
Active\_Leases  
DOQQ2004



**TRACT 39774 - St. Mary and Terrebonne Parishes, Louisiana**

All of the lands now or formerly constituting the beds and bottoms of all water bodies of every nature and description as to which title is vested in the State of Louisiana, together with all islands arising therein and other lands formed by accretion or by reliction, where allowed by law, excepting tax adjudicated lands, and not presently under mineral lease on April 9, 2008, situated in St. Mary and Terrebonne Parishes, Louisiana, and more particularly described as follows: Beginning at a point on the most southeasterly corner of State Lease No. 19444 having Coordinates of X = 2,022,488.40 and Y = 317,136.54; thence North along boundary of said State Lease No. 19444 approximately 5,497 feet to a point of intersection with the Southern boundary of State Lease No. 1337, as amended, having a Coordinate of X = 2,022,488.40; thence Easterly along the Southern boundary of said State Lease No. 1337 approximately 9392 feet to its Southeast corner having Coordinates of X = 2,031,880.00 and Y = 322,641.22; thence East 4,626.07 to a point having Coordinates of X = 2,036,505.98 and Y = 322,641.22; thence South 0 degrees 19 minutes 25 seconds East 6,949.00 feet to a point having Coordinates of X = 2,036,545.23 and Y = 315,692.33; thence West 14,580.26 feet to a point having Coordinates of X = 2,021,964.98 and Y = 315,692.33; thence North 00 degrees 06 minutes 38 seconds West 1,444.22 feet to a point on the Southern boundary of said State Lease No. 19444 having Coordinates of X = 2,021,962.19 and Y = 317,136.54; thence East 526.21 feet along the Southern boundary of said State Lease No. 19444 to the Point of Beginning, **LESS AND EXCEPT** in its entirety State Lease Nos. 15652 and 16361, as amended, more particularly described as follows: Commencing at a point being the point of beginning of the above described nominated tract having coordinates of X = 2,022,488.40 and Y = 317,136.54; thence South 77 degrees 33 minutes 06 seconds East 2651.45 feet to a point being the point of beginning of said State Lease No. 15652 having Coordinates of X = 2,025,077.52 and Y = 316,565.00; thence along the perimeter of the 10,900' RA SUA unit as established by the Conservation Order No. 835-A-5 effective July 9, 2002 the following courses and distances: Along a curve to the right having a delta of 52 degrees 56 minutes 25 seconds, a radius of 358.25 feet, and a chord bearing of North 22 degrees 56 minutes 16 seconds East a distance of 319.37 feet to a point having Coordinates of X = 2,025,201.99 and Y = 316,859.11; thence along a curve to the left having a delta of 0 degrees 47 minutes 55 seconds, a radius of 6,742.41 feet, and a chord bearing of North 49 degrees 40 minutes 42 seconds East a distance of 93.97 feet having Coordinates of X = 2,025,273.64 and Y = 316,919.92; thence along the perimeter of the L 10,700' RA SUA unit as established by the Conservation Order No. 835-G effective December 14, 1999 the following courses and distances: Along a curve to the right having a delta of 0 degrees 01 minutes 28 seconds, a radius of 308,196.19 feet, and a chord bearing of North 40 degrees 18 minutes 46 seconds West a distance of 131.11 feet to a point having Coordinates of X = 2,025,188.81 and Y = 317,019.90; Along a curve to the right having a delta of 71 degrees 50 minutes 39 seconds, a radius of 576.75 feet, and a chord bearing of North 6 degrees 25 minutes 55 seconds West a distance of 676.73 feet to a point



having Coordinates of X = 2,025,113.00 and Y = 317,692.37; Along a curve to the right having a delta of 17 degrees 36 minutes 34 seconds, a radius of 2,663.16 feet, and a chord bearing of North 32 degrees 38 minutes 16 seconds East a distance of 815.29 feet to a point having Coordinates of X = 2,025,552.71 and Y = 318,378.93; Along a curve to the left having a delta of 9 degrees 23 minutes 47 seconds, a radius of 4,976.99 feet, and a chord bearing of North 35 degrees 28 minutes 16 seconds East a distance of 815.30 feet to a point having Coordinates of X = 2,026,025.82 and Y = 319,042.91; Along a curve to the right having a delta of 37 degrees 58 minutes 37 seconds, a radius of 431.21 feet, and a chord bearing of North 51 degrees 48 minutes 14 seconds East a distance of 280.61 feet to a point having Coordinates of X = 2,026,246.35 and Y = 319,216.43; Along a curve to the left having a delta of 00 degrees 08 minutes 17 seconds, a radius of 215,229.64 feet, and a chord bearing of North 70 degrees 51 minutes 41 seconds East a distance of 518.28 feet to a point having Coordinates of X = 2,026,735.99 and Y = 319,386.35; Along a curve to the right having a delta of 49 degrees 57 minutes 57 seconds, a radius of 232.59 feet, and a chord bearing of South 84 degrees 05 minutes 12 seconds East a distance of 196.47 feet to a point having Coordinates of X = 2,026,931.41 and Y = 319,366.11; Along a curve to the right having a delta of 25 degrees 32 minutes 22 seconds, a radius of 1,200.67 feet, and a chord bearing of South 48 degrees 24 minutes 31 seconds East a distance of 530.78 feet to a point having Coordinates of X = 2,027,328.38 and Y = 319,013.77; Along a curve to the right having a delta of 13 degrees 19 minutes 09 seconds, a radius of 5,963.44 feet, and a chord bearing of South 31 degrees 56 minutes 28 seconds East a distance of 1,383.15 feet to a point having Coordinates of X = 2,028,060.13 and Y = 317,840.04; Along a curve to the right having a delta of 27 degrees 54 minutes 38 seconds, a radius of 1,308.87 feet, and a chord bearing of South 6 degrees 34 minutes 02 seconds East a distance of 631.30 feet to a point having Coordinates of X = 2,028,132.33 and Y = 317,212.88; Along a curve to the right having a delta of 49 degrees 05 minutes 14 seconds, a radius of 336.13 feet, and a chord bearing of South 27 degrees 03 minutes 34 seconds West a distance of 279.24 feet to a point having Coordinates of X = 2,028,005.30 and Y = 316,964.20; Along a curve to the right having a delta of 0 degrees 07 minutes 56 seconds, a radius of 9,058.01 feet, and a chord bearing of South 44 degrees 05 minutes 27 seconds West a distance of 20.88 feet to the intersection with 10,900' RA SUA having Coordinates of X = 2,027,990.77 and Y = 316,949.20; thence along the perimeter of the 10,900' RA SUA unit as established by the Conservation Order No. 835-A-5 effective July 9, 2002 the following courses and distances: Along a curve to the right having a delta of 11 degrees 21 minutes 55 seconds, a radius of 1,940.31 feet, and a chord bearing of South 0 degrees 53 minutes 42 seconds West a distance of 384.25 feet to the intersection with south line of State Lease No. 15652 having Coordinates of X = 2,027,984.76 and Y = 316,565.00; thence West a distance of 390.52 feet to a point also being the Northeastern corner of State Lease No. 16361 having Coordinates of X = 2,027,594.25 and Y = 316,565.00; thence along State Lease No. 16361 along a curve to the right having a Delta of 3 degrees 44 minutes 50

seconds, a Radius of 9058.01 feet, and a Chord Bearing of South 49 degrees 31 minutes 25 seconds West a distance of 592.30 feet to a point having Coordinates of X = 2,027,143.71 and Y = 316,180.52; Along a curve to the right having a Delta of 7 degrees 25 minutes 03 seconds, a Radius of 5,399.32 feet, and a Chord Bearing of South 53 degrees 44 minutes 05 seconds West and distance of 698.52 feet to a point having Coordinates of X = 2,026,580.50 and Y = 315,767.33; Along a curve to the right having a Delta of 72 degrees 01 minutes 18 seconds, a Radius of 212.15 feet, and a Chord Bearing of South 81 degrees 36 minutes 02 seconds West and distance of 249.46 feet to a point having Coordinates of X = 2,026,333.72 and Y = 315,730.89; Along a curve to the right having a delta of 11 degrees 57 minutes 08 seconds, a radius of 3,619.64 feet, and a chord bearing of North 43 degrees 11 minutes 04 seconds West a distance of 753.70 feet to a point having Coordinates of X = 2,025,817.92 and Y = 316,280.45; Along a curve to the right having a delta of 0 degrees 04 minutes 10 seconds, a radius of 308,196.19 feet, and a chord bearing of North 40 degrees 26 minutes 47 seconds West a distance of 373.90 feet to a point of intersection with the south line of State Lease No. 15652 having Coordinates of X = 2,025,575.36 and Y = 316,565.00; thence along the south line of State Lease No. 15652 West a distance of 497.83 feet to the Point of Beginning, nominated tract containing approximately **738 acres**, all as more particularly outlined on a plat on file in the Office of Mineral Resources, Department of Natural Resources. All bearings, distances and coordinates are based on Louisiana Coordinate System of 1927, (North or South Zone), where applicable.

NOTE: The above description of the Tract nominated for lease has been provided and corrected, where required, exclusively by the nomination party. Any mineral lease selected from this Tract and awarded by the Louisiana State Mineral Board shall be without warranty of any kind, either express, implied, or statutory, including, but not limited to, the implied warranties of merchantability and fitness for a particular purpose. Should the mineral lease awarded by the Louisiana State Mineral Board be subsequently modified, cancelled or abrogated due to the existence of conflicting leases, operating agreements, private claims or other future obligations or conditions which may affect all or any portion of the leased Tract, it shall not relieve the Lessee of the obligation to pay any bonus due thereon to the Louisiana State Mineral Board, nor shall the Louisiana State Mineral Board be obligated to refund any consideration paid by the Lessor prior to such modification, cancellation, or abrogation, including, but not limited to, bonuses, rentals and royalties.

NOTE: The State of Louisiana does hereby reserve, and this lease shall be subject to, the imprescriptible right of surface use in the nature of a servitude in favor of the Department of Natural Resources, including its Offices and Commissions, for the sole purpose of implementing, constructing, servicing and maintaining approved coastal zone management and/or restoration projects. Utilization of any and all rights derived under this lease by the mineral lessee, its agents, successors or assigns,

shall not interfere with nor hinder the reasonable surface use by the Department of Natural Resources, its Offices or Commissions, as herein above reserved.

Applicant: PATRICK L. DONOHUE PETROLEUM PROPERTIES, INC.

Bidder	Cash Payment	Price/Acre	Rental	Oil	Gas	Other



**Legend**

-  08040071
-  Active\_Leases
-  Counties

**DOQQ2004**

