

TRACT 39745 - Catahoula and Concordia Parishes, Louisiana

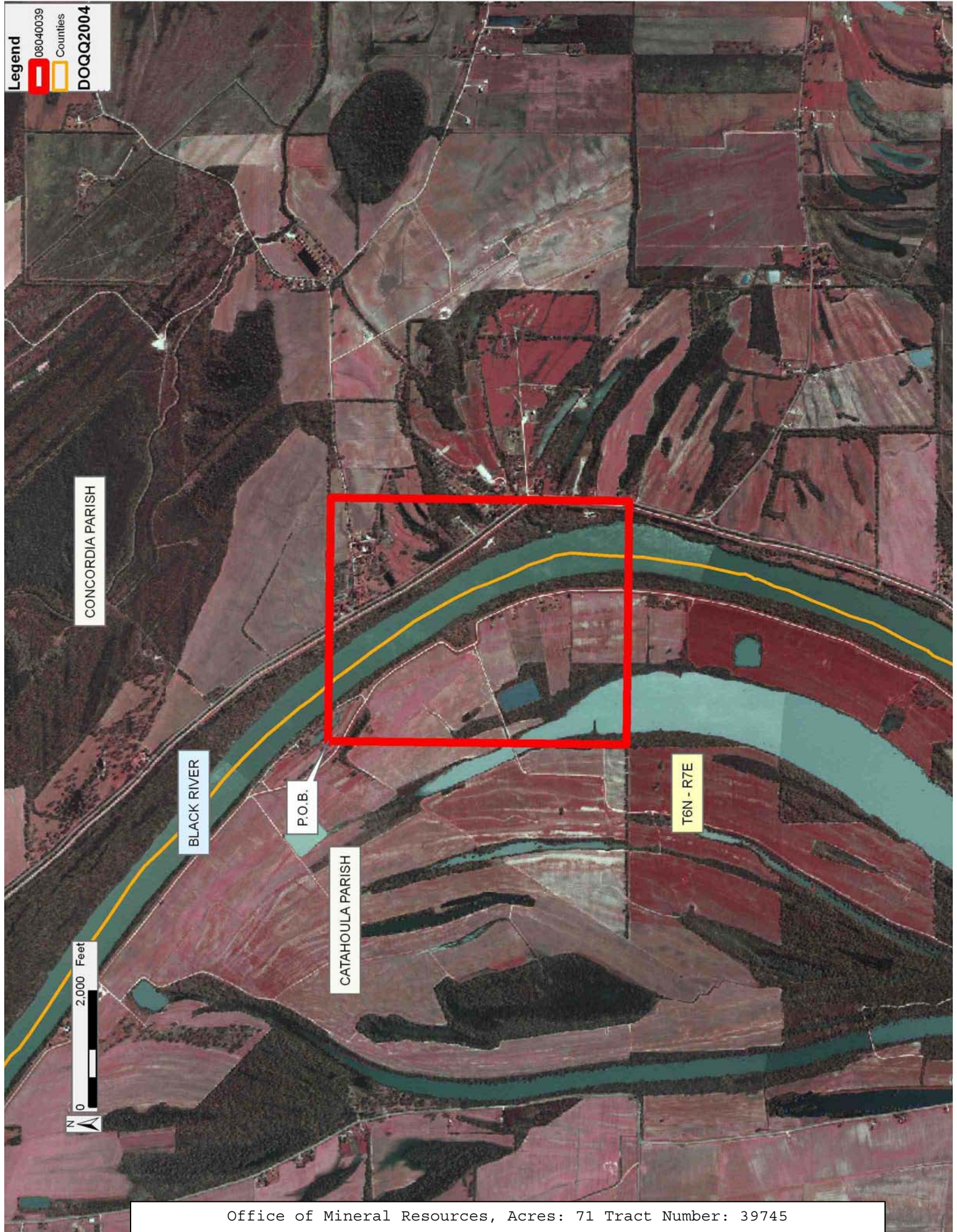
All of the lands now or formerly constituting the beds and bottoms of all water bodies of every nature and description as to which title is vested in the State of Louisiana, together with all islands arising therein and other lands formed by accretion or by reliction, where allowed by law, excepting tax adjudicated lands, and not presently under mineral lease on April 9, 2008, situated in Catahoula and Concordia Parishes, Louisiana, and more particularly described as follows: Beginning at a point having Coordinates of X = 2,222,372.83 and Y = 316,523.77; thence East 4,192.04 feet to a point having Coordinates of X = 2,226,564.87 and Y = 316,523.77; thence South 5,136.38 feet to a point having Coordinates of X = 2,226,564.87 and Y = 311,387.39; thence West 4,192.04 feet to a point having Coordinates of X = 2,222,372.83 and Y = 311,387.39; thence North 5,136.38 feet to the point of beginning, containing approximately **71 acres**, all as more particularly outlined on a plat on file in the Office of Mineral Resources, Department of Natural Resources. All bearings, distances and coordinates are based on Louisiana Coordinate System of 1927, (North or South Zone), where applicable.

NOTE: The above description of the Tract nominated for lease has been provided and corrected, where required, exclusively by the nomination party. Any mineral lease selected from this Tract and awarded by the Louisiana State Mineral Board shall be without warranty of any kind, either express, implied, or statutory, including, but not limited to, the implied warranties of merchantability and fitness for a particular purpose. Should the mineral lease awarded by the Louisiana State Mineral Board be subsequently modified, cancelled or abrogated due to the existence of conflicting leases, operating agreements, private claims or other future obligations or conditions which may affect all or any portion of the leased Tract, it shall not relieve the Lessee of the obligation to pay any bonus due thereon to the Louisiana State Mineral Board, nor shall the Louisiana State Mineral Board be obligated to refund any consideration paid by the Lessor prior to such modification, cancellation, or abrogation, including, but not limited to, bonuses, rentals and royalties.

Applicant: LESLIE M. COOPER

Bidder	Cash Payment	Price/Acre	Rental	Oil	Gas	Other

Legend
08040039
Counties
DOQQ2004



CONCORDIA PARISH

BLACK RIVER

P.O.B.

CATAHOULA PARISH

T6N - R7E

0 2,000 Feet

TRACT 39746 - Jefferson Parish, Louisiana

All of the lands now or formerly constituting the beds and bottoms of all water bodies of every nature and description as to which title is vested in the State of Louisiana, together with all islands arising therein and other lands formed by accretion or by reliction, where allowed by law, excepting tax adjudicated lands, and not presently under mineral lease on April 9, 2008, situated in Jefferson Parish, Louisiana, and more particularly described as follows: Beginning at a point having Coordinates of X = 2,370,495.88 and Y = 426,150.00; thence East 8,500.00 feet to a point having Coordinates of X = 2,378,995.88 and Y = 426,150.00; thence South 11,250.00 feet to a point having Coordinates of X = 2,378,995.88 and Y = 414,900.00; thence West 8,500.00 feet to a point having Coordinates of X = 2,370,495.88 and Y = 414,900.00; thence North 11,250.00 feet to the point of beginning, (This tract includes only waterbottoms claimed and owned by the state and specifically excludes any land which the state may claim or own and to which the mineral rights are vested in the state), containing approximately **55 acres**, all as more particularly outlined on a plat on file in the Office of Mineral Resources, Department of Natural Resources. All bearings, distances and coordinates are based on Louisiana Coordinate System of 1927, (North or South Zone), where applicable.

NOTE: The above description of the Tract nominated for lease has been provided and corrected, where required, exclusively by the nomination party. Any mineral lease selected from this Tract and awarded by the Louisiana State Mineral Board shall be without warranty of any kind, either express, implied, or statutory, including, but not limited to, the implied warranties of merchantability and fitness for a particular purpose. Should the mineral lease awarded by the Louisiana State Mineral Board be subsequently modified, cancelled or abrogated due to the existence of conflicting leases, operating agreements, private claims or other future obligations or conditions which may affect all or any portion of the leased Tract, it shall not relieve the Lessee of the obligation to pay any bonus due thereon to the Louisiana State Mineral Board, nor shall the Louisiana State Mineral Board be obligated to refund any consideration paid by the Lessor prior to such modification, cancellation, or abrogation, including, but not limited to, bonuses, rentals and royalties.

NOTE: The State of Louisiana does hereby reserve, and this lease shall be subject to, the imprescriptible right of surface use in the nature of a servitude in favor of the Department of Natural Resources, including its Offices and Commissions, for the sole purpose of implementing, constructing, servicing and maintaining approved coastal zone management and/or restoration projects. Utilization of any and all rights derived under this lease by the mineral lessee, its agents, successors or assigns, shall not interfere with nor hinder the reasonable surface use by the Department of Natural Resources, its Offices or Commissions, as herein above reserved.

Applicant: THEOPHILUS OIL, GAS & LAND SERVICES, LLC

Bidder	Cash Payment	Price/Acre	Rental	Oil	Gas	Other

JEFFERSON PARISH

T14S - R23E

T15S - R23E

BAYOU SEGNETTE

P.O.B.

BAYOU BARDEUX

LAKE SALVADOR



TRACT 39747 - St. Charles Parish, Louisiana

All of the lands now or formerly constituting the beds and bottoms of all water bodies of every nature and description as to which title is vested in the State of Louisiana, together with all islands arising therein and other lands formed by accretion or by reliction, where allowed by law, excepting tax adjudicated lands, and not presently under mineral lease on April 9, 2008, situated in St. Charles Parish, Louisiana, and more particularly described as follows: Beginning at a point having Coordinates of X = 2,342,005.00 and Y = 426,150.00; thence East 10,161.73 feet to a point having Coordinates of X = 2,352,166.73 and Y = 426,150.00; thence South 11,250.00 feet to a point having Coordinates of X = 2,352,166.73 and Y = 414,900.00; thence West 10,161.73 feet to a point having Coordinates of X = 2,342,005.00 and Y = 414,900.00; thence North 11,250.00 feet to the point of beginning, **LESS AND EXCEPT** any portion of the Salvador Wildlife Management Area which lies within the above described tract, **ALSO LESS AND EXCEPT** any portion of the Timken Wildlife Management Area which lies within the above described tract, containing approximately **1,635 acres**, all as more particularly outlined on a plat on file in the Office of Mineral Resources, Department of Natural Resources. All bearings, distances and coordinates are based on Louisiana Coordinate System of 1927, (North or South Zone), where applicable.

NOTE: The above description of the Tract nominated for lease has been provided and corrected, where required, exclusively by the nomination party. Any mineral lease selected from this Tract and awarded by the Louisiana State Mineral Board shall be without warranty of any kind, either express, implied, or statutory, including, but not limited to, the implied warranties of merchantability and fitness for a particular purpose. Should the mineral lease awarded by the Louisiana State Mineral Board be subsequently modified, cancelled or abrogated due to the existence of conflicting leases, operating agreements, private claims or other future obligations or conditions which may affect all or any portion of the leased Tract, it shall not relieve the Lessee of the obligation to pay any bonus due thereon to the Louisiana State Mineral Board, nor shall the Louisiana State Mineral Board be obligated to refund any consideration paid by the Lessor prior to such modification, cancellation, or abrogation, including, but not limited to, bonuses, rentals and royalties.

NOTE: The State of Louisiana does hereby reserve, and this lease shall be subject to, the imprescriptible right of surface use in the nature of a servitude in favor of the Department of Natural Resources, including its Offices and Commissions, for the sole purpose of implementing, constructing, servicing and maintaining approved coastal zone management and/or restoration projects. Utilization of any and all rights derived under this lease by the mineral lessee, its agents, successors or assigns, shall not interfere with nor hinder the reasonable surface use by the Department of Natural Resources, its Offices or Commissions, as herein above reserved.

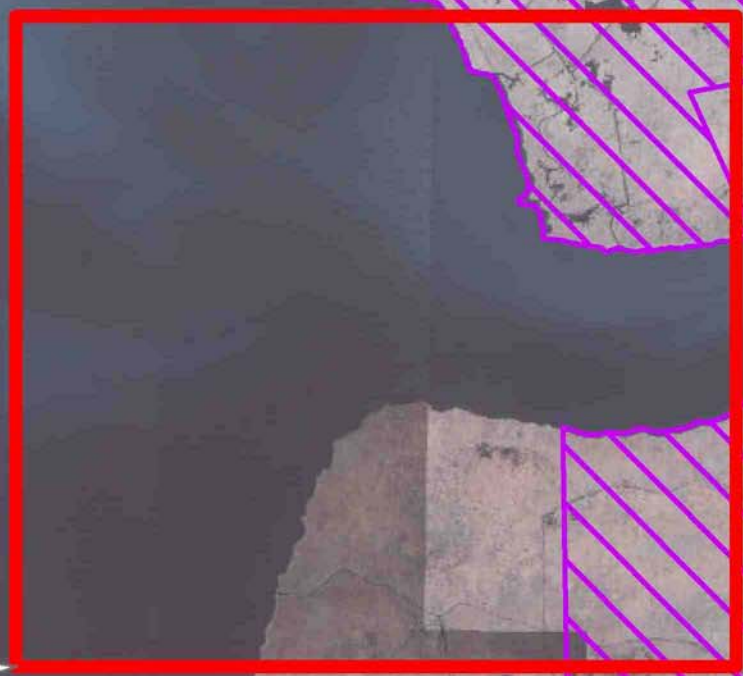
Applicant: THEOPHILUS OIL, GAS & LAND SERVICES, LLC

Bidder	Cash Payment	Price/Acre	Rental	Oil	Gas	Other

Legend
08040054
Wildlife
DOQQ2004

ST CHARLES PARISH
LAKE CATAOUATCHE

P.O.B.



TIMKEN WMA

LAKE SALVADOR

BAYOU COUBA

T14S - R22E

T15S - R22E

SALVADOR WMA

TRACT 39748 - St. Charles Parish, Louisiana

All of the lands now or formerly constituting the beds and bottoms of all water bodies of every nature and description as to which title is vested in the State of Louisiana, together with all islands arising therein and other lands formed by accretion or by reliction, where allowed by law, excepting tax adjudicated lands, and not presently under mineral lease on April 9, 2008, situated in St. Charles Parish, Louisiana, and more particularly described as follows: Beginning at a point having Coordinates of X = 2,352,166.73 and Y = 426,150.00; thence East 8,500.00 feet to a point having Coordinates of X = 2,360,666.73 and Y = 426,150.00; thence South 10,750.00 feet to a point having Coordinates of X = 2,360,666.73 and Y = 415,400.00; thence West 8,500.00 feet to a point having Coordinates of X = 2,352,166.73 and Y = 415,400.00; thence North 10,750.00 feet to the point of beginning, **LESS AND EXCEPT** any portion of the Timken Wildlife Management Area which lies within the above described tract, containing approximately **953 acres**, all as more particularly outlined on a plat on file in the Office of Mineral Resources, Department of Natural Resources. All bearings, distances and coordinates are based on Louisiana Coordinate System of 1927, (North or South Zone), where applicable.

NOTE: The above description of the Tract nominated for lease has been provided and corrected, where required, exclusively by the nomination party. Any mineral lease selected from this Tract and awarded by the Louisiana State Mineral Board shall be without warranty of any kind, either express, implied, or statutory, including, but not limited to, the implied warranties of merchantability and fitness for a particular purpose. Should the mineral lease awarded by the Louisiana State Mineral Board be subsequently modified, cancelled or abrogated due to the existence of conflicting leases, operating agreements, private claims or other future obligations or conditions which may affect all or any portion of the leased Tract, it shall not relieve the Lessee of the obligation to pay any bonus due thereon to the Louisiana State Mineral Board, nor shall the Louisiana State Mineral Board be obligated to refund any consideration paid by the Lessor prior to such modification, cancellation, or abrogation, including, but not limited to, bonuses, rentals and royalties.

NOTE: The State of Louisiana does hereby reserve, and this lease shall be subject to, the imprescriptible right of surface use in the nature of a servitude in favor of the Department of Natural Resources, including its Offices and Commissions, for the sole purpose of implementing, constructing, servicing and maintaining approved coastal zone management and/or restoration projects. Utilization of any and all rights derived under this lease by the mineral lessee, its agents, successors or assigns, shall not interfere with nor hinder the reasonable surface use by the Department of Natural Resources, its Offices or Commissions, as herein above reserved.

Applicant: THEOPHILUS OIL, GAS & LAND SERVICES, LLC

Bidder	Cash Payment	Price/Acre	Rental	Oil	Gas	Other

Legend
08040055
Wildlife
DOQQ2004

ST CHARLES PARISH

LAKE CATAOUATCHÉ

T14S - R22E

P.O.B.

TIMKEN WMA

T15S - R22E

LAKE SALVADOR



TRACT 39749 - Jefferson and St. Charles Parishes, Louisiana

All of the lands now or formerly constituting the beds and bottoms of all water bodies of every nature and description as to which title is vested in the State of Louisiana, together with all islands arising therein and other lands formed by accretion or by reliction, where allowed by law, excepting tax adjudicated lands, and not presently under mineral lease on April 9, 2008, situated in Jefferson and St. Charles Parishes, Louisiana, and more particularly described as follows: Beginning at a point having Coordinates of X = 2,360,666.73 and Y = 426,150.00; thence East 9,829.15 feet to a point having Coordinates of X = 2,370,495.88 and Y = 426,150.00; thence South 11,250.00 feet to a point having Coordinates of X = 2,370,495.88 and Y = 414,900.00; thence West 9,829.15 feet to a point having Coordinates of X = 2,360,666.73 and Y = 414,900.00; thence North 11,250.00 feet to the point of beginning, **LESS AND EXCEPT** any portion of the Timken Wildlife Management Area which lies within the above described tract, (This tract includes only waterbottoms claimed and owned by the state and specifically excludes any land which the state or Wildlife and Fisheries may claim or own and to which the mineral rights are vested in them), containing approximately **1,190 acres**, all as more particularly outlined on a plat on file in the Office of Mineral Resources, Department of Natural Resources. All bearings, distances and coordinates are based on Louisiana Coordinate System of 1927, (North or South Zone), where applicable.

NOTE: The above description of the Tract nominated for lease has been provided and corrected, where required, exclusively by the nomination party. Any mineral lease selected from this Tract and awarded by the Louisiana State Mineral Board shall be without warranty of any kind, either express, implied, or statutory, including, but not limited to, the implied warranties of merchantability and fitness for a particular purpose. Should the mineral lease awarded by the Louisiana State Mineral Board be subsequently modified, cancelled or abrogated due to the existence of conflicting leases, operating agreements, private claims or other future obligations or conditions which may affect all or any portion of the leased Tract, it shall not relieve the Lessee of the obligation to pay any bonus due thereon to the Louisiana State Mineral Board, nor shall the Louisiana State Mineral Board be obligated to refund any consideration paid by the Lessor prior to such modification, cancellation, or abrogation, including, but not limited to, bonuses, rentals and royalties.

NOTE: The State of Louisiana does hereby reserve, and this lease shall be subject to, the imprescriptible right of surface use in the nature of a servitude in favor of the Department of Natural Resources, including its Offices and Commissions, for the sole purpose of implementing, constructing, servicing and maintaining approved coastal zone management and/or restoration projects. Utilization of any and all rights derived under this lease by the mineral lessee, its agents, successors or assigns, shall not interfere with nor hinder the reasonable surface use by the

Department of Natural Resources, its Offices or Commissions, as herein above reserved.

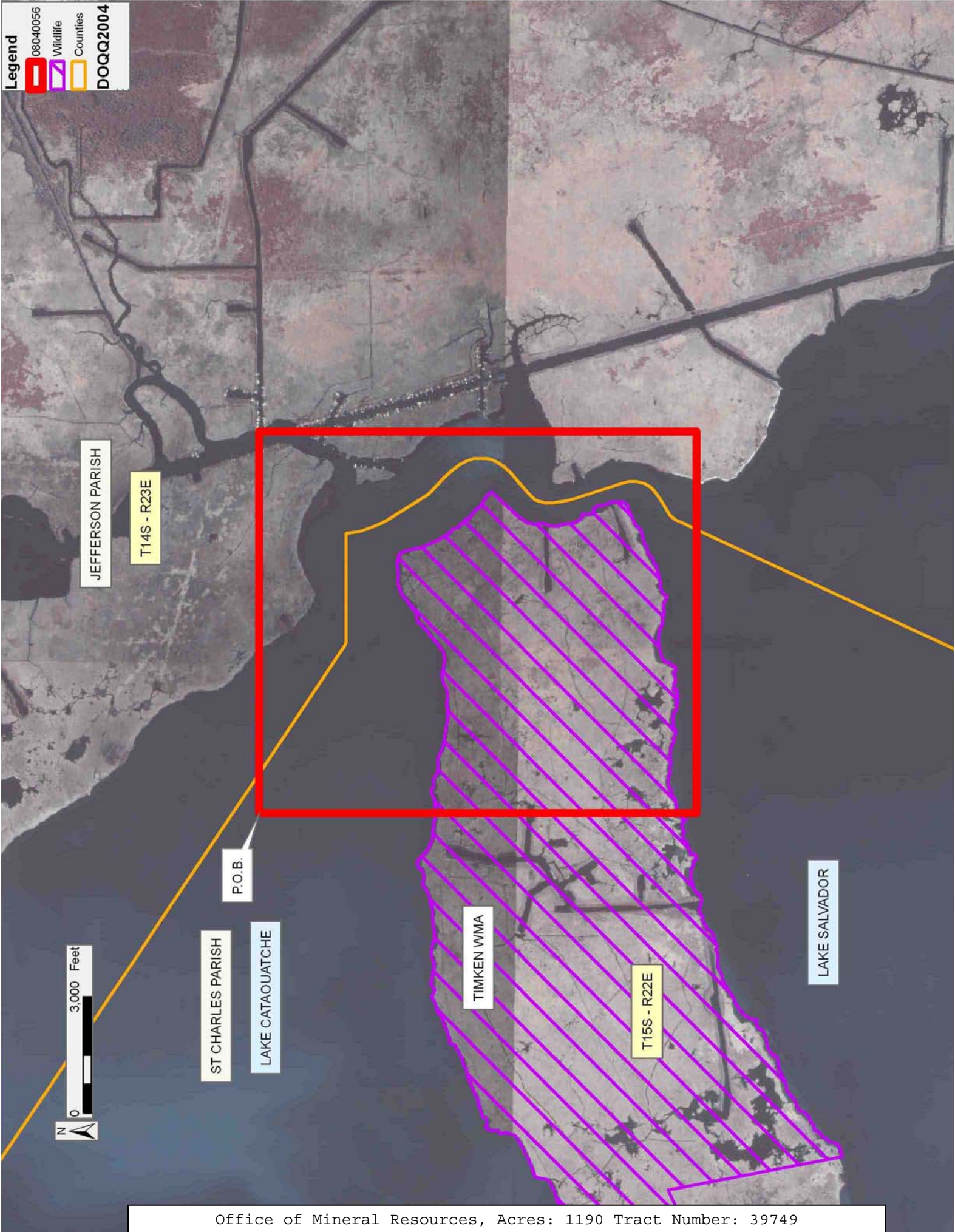
Applicant: THEOPHILUS OIL, GAS & LAND SERVICES, LLC

Bidder	Cash Payment	Price/Acre	Rental	Oil	Gas	Other

Legend

- 08040056
- Wildlife
- Counties

DOQQ2004



JEFFERSON PARISH

T14S - R23E

P.O.B.

ST CHARLES PARISH

LAKE CATAOUATCHE

TIMKEN WMA

T15S - R22E

LAKE SALVADOR

TRACT 39750 - Plaquemines and St. Bernard Parishes, Louisiana

All of the lands now or formerly constituting the beds and bottoms of all water bodies of every nature and description as to which title is vested in the State of Louisiana, together with all islands arising therein and other lands formed by accretion or by reliction, where allowed by law, excepting tax adjudicated lands, and not presently under mineral lease on April 9, 2008, situated in Plaquemines and St. Bernard Parishes, Louisiana, and more particularly described as follows: Beginning at a point being the Northeast corner of State Lease No. 19189 having Coordinates of X = 2,488,749.00 and Y = 414,966.00; thence East 4,201.18 feet to a point having Coordinates of X = 2,492,950.18 and Y = 414,966.00; thence South 7,487.50 feet to a point having Coordinates of X = 2,492,950.18 and Y = 407,478.50; thence West 5,834.65 feet to a point having Coordinates of X = 2,487,115.53 and Y = 407,478.50; thence North 2,887.50 feet to a point, being the Southeast corner of State Lease No. 19163 and Southwest corner of said State Lease No. 19189, having Coordinates of X = 2,487,115.53 and Y = 410,366.00; thence East 1,633.47 feet along the Southern boundary of said State Lease No. 19189 to a point being its Southeast corner, having Coordinates of X = 2,488,749.00 and Y = 410,366.00; thence North 4,600.00 feet along the Eastern boundary of said State Lease No. 19189, to its Northeast corner, being the point of beginning containing approximately **441 acres**, all as more particularly outlined on a plat on file in the Office of Mineral Resources, Department of Natural Resources. All bearings, distances and coordinates are based on Louisiana Coordinate System of 1927, (North or South Zone), where applicable.

NOTE: The above description of the Tract nominated for lease has been provided and corrected, where required, exclusively by the nomination party. Any mineral lease selected from this Tract and awarded by the Louisiana State Mineral Board shall be without warranty of any kind, either express, implied, or statutory, including, but not limited to, the implied warranties of merchantability and fitness for a particular purpose. Should the mineral lease awarded by the Louisiana State Mineral Board be subsequently modified, cancelled or abrogated due to the existence of conflicting leases, operating agreements, private claims or other future obligations or conditions which may affect all or any portion of the leased Tract, it shall not relieve the Lessee of the obligation to pay any bonus due thereon to the Louisiana State Mineral Board, nor shall the Louisiana State Mineral Board be obligated to refund any consideration paid by the Lessor prior to such modification, cancellation, or abrogation, including, but not limited to, bonuses, rentals and royalties.

NOTE: The State of Louisiana does hereby reserve, and this lease shall be subject to, the imprescriptible right of surface use in the nature of a servitude in favor of the Department of Natural Resources, including its Offices and Commissions, for the sole purpose of implementing, constructing, servicing and maintaining approved coastal zone management and/or restoration projects. Utilization of any and all rights derived

under this lease by the mineral lessee, its agents, successors or assigns, shall not interfere with nor hinder the reasonable surface use by the Department of Natural Resources, its Offices or Commissions, as herein above reserved.

NOTE: The Department of Wildlife and Fisheries has designated certain areas in the coastal waters of the State of Louisiana as Oyster Seed Bed Areas. The exact location of those Seed Bed Areas must be obtained from the Department of Wildlife and Fisheries and any work done under a mineral lease from the State of Louisiana may necessarily be conducted in conformity with the rules and regulations promulgated by the said Department of Wildlife and Fisheries for Oyster Seed Bed Areas.

Applicant: ROLAND OIL & GAS

Bidder	Cash Payment	Price/Acre	Rental	Oil	Gas	Other

Legend

- 08040052
- Active_Leases
- Counties
- DOQQ2004



TRACT 39751 - Plaquemines and St. Bernard Parishes, Louisiana

All of the lands now or formerly constituting the beds and bottoms of all water bodies of every nature and description as to which title is vested in the State of Louisiana, together with all islands arising therein and other lands formed by accretion or by reliction, where allowed by law, excepting tax adjudicated lands, and not presently under mineral lease on April 9, 2008, situated in Plaquemines and St. Bernard Parishes, Louisiana, and more particularly described as follows: Beginning at a point being the Northwest corner of State Lease No. 19189, having Coordinates of X = 2,484,574.00 and Y = 414,966.00; thence South 2,471.50 feet along the Western boundary of said State Lease No. 19189 to a point of intersection with State Lease No. 19163, having Coordinates of X = 2,484,574.00 and Y = 412,494.50; thence South 64 degrees 51 minutes 38 seconds West 1,656.95 feet along the Northern boundary of State Lease No. 19163 to a point being its Northwest corner, having Coordinates of X = 2,483,074.00 and Y = 411,790.59; thence South 1,424.59 feet along the Western boundary of said State Lease No. 19163 to a point being its Southwest corner, having Coordinates of X = 2,483,074.00 and Y = 410,366.00; thence East 4,041.53 feet along the Southern boundary of said State Lease No. 19163 to a point being its Southeast corner, having Coordinates of X = 2,487,115.53 and Y = 410,366.00; thence South 2,887.50 feet to a point having Coordinates of X = 2,487,115.53 and Y = 407,478.50; thence West 7,723.12 feet to a point, having Coordinates of X = 2,479,392.41 and Y = 407,478.50; thence North 7,487.50 feet to a point having Coordinates of X = 2,479,392.41 and Y = 414,966.00; thence East 5,181.59 feet to the point of beginning, containing approximately **467 acres**, all as more particularly outlined on a plat on file in the Office of Mineral Resources, Department of Natural Resources. All bearings, distances and coordinates are based on Louisiana Coordinate System of 1927, (North or South Zone), where applicable.

NOTE: The above description of the Tract nominated for lease has been provided and corrected, where required, exclusively by the nomination party. Any mineral lease selected from this Tract and awarded by the Louisiana State Mineral Board shall be without warranty of any kind, either express, implied, or statutory, including, but not limited to, the implied warranties of merchantability and fitness for a particular purpose. Should the mineral lease awarded by the Louisiana State Mineral Board be subsequently modified, cancelled or abrogated due to the existence of conflicting leases, operating agreements, private claims or other future obligations or conditions which may affect all or any portion of the leased Tract, it shall not relieve the Lessee of the obligation to pay any bonus due thereon to the Louisiana State Mineral Board, nor shall the Louisiana State Mineral Board be obligated to refund any consideration paid by the Lessor prior to such modification, cancellation, or abrogation, including, but not limited to, bonuses, rentals and royalties.

NOTE: The State of Louisiana does hereby reserve, and this lease shall be subject to, the imprescriptible right of surface use in the nature of a

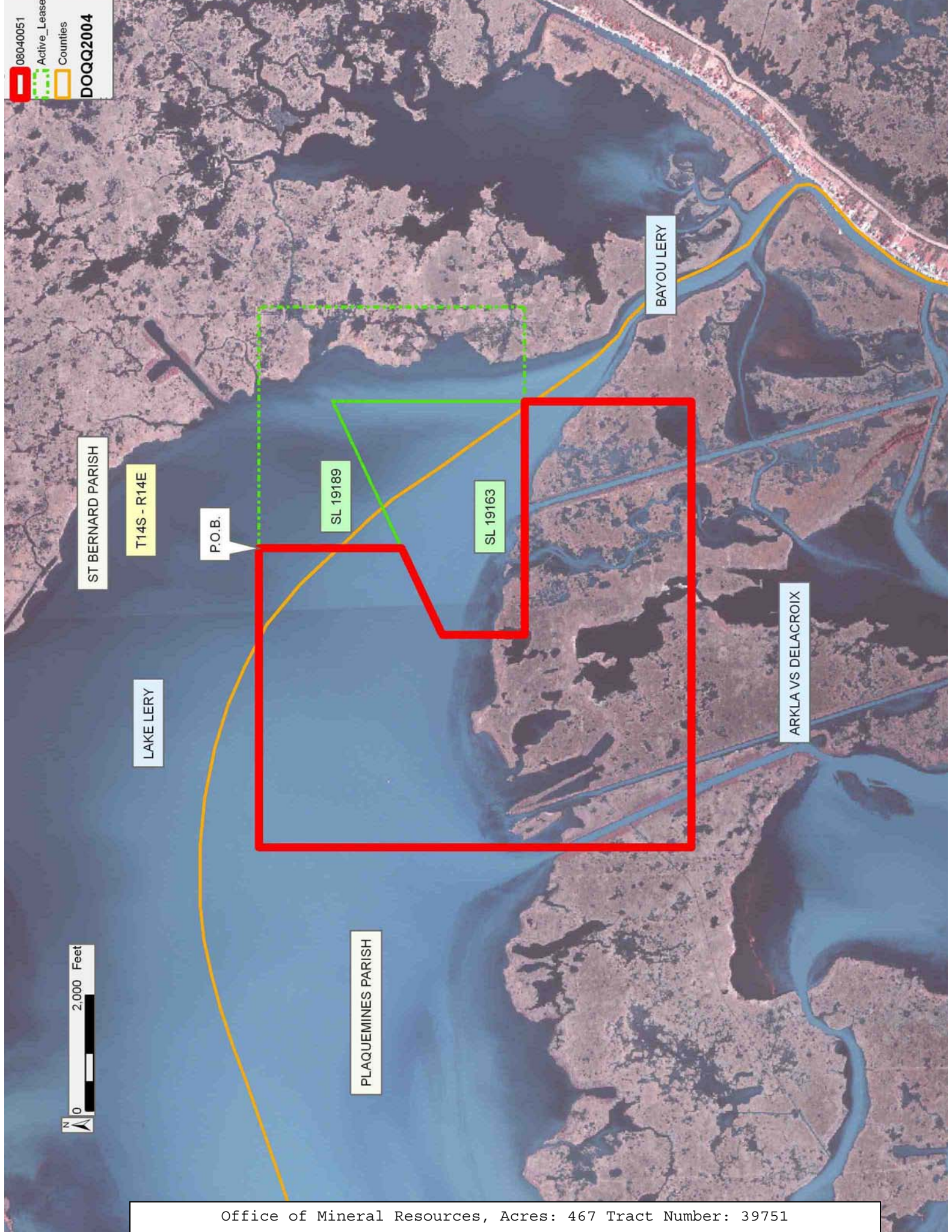
servitude in favor of the Department of Natural Resources, including its Offices and Commissions, for the sole purpose of implementing, constructing, servicing and maintaining approved coastal zone management and/or restoration projects. Utilization of any and all rights derived under this lease by the mineral lessee, its agents, successors or assigns, shall not interfere with nor hinder the reasonable surface use by the Department of Natural Resources, its Offices or Commissions, as herein above reserved.

NOTE: The Department of Wildlife and Fisheries has designated certain areas in the coastal waters of the State of Louisiana as Oyster Seed Bed Areas. The exact location of those Seed Bed Areas must be obtained from the Department of Wildlife and Fisheries and any work done under a mineral lease from the State of Louisiana may necessarily be conducted in conformity with the rules and regulations promulgated by the said Department of Wildlife and Fisheries for Oyster Seed Bed Areas.

Applicant: ROLAND OIL & GAS

Bidder	Cash Payment	Price/Acre	Rental	Oil	Gas	Other

08040051
Active_Lease
Counties
DOQQ2004



TRACT 39752 - St. Charles Parish, Louisiana

All of the lands now or formerly constituting the beds and bottoms of all water bodies of every nature and description as to which title is vested in the State of Louisiana, together with all islands arising therein and other lands formed by accretion or by reliction, where allowed by law, excepting tax adjudicated lands, and not presently under mineral lease on April 9, 2008, situated in St. Charles Parish, Louisiana, and more particularly described as follows: Beginning at a point having Coordinates of X = 2,352,166.73 and Y = 415,400.00; thence East 8,500.00 feet to a point having Coordinates of X = 2,360,666.73 and Y = 415,400.00; thence South 9,000.00 feet to the Westernmost Southwest corner of State Lease No. 18963 having Coordinates of X = 2,360,666.73 and Y = 406,400.00; thence West 8,500.00 feet to a point having Coordinates of X = 2,352,166.73 and Y = 406,400.00; thence North 9,000.00 feet to the point of beginning, **LESS AND EXCEPT** any portion of the Timken Wildlife Management Area which lies within the above described tract, containing approximately **1,456 acres**, all as more particularly outlined on a plat on file in the Office of Mineral Resources, Department of Natural Resources. All bearings, distances and coordinates are based on Louisiana Coordinate System of 1927, (North or South Zone), where applicable.

NOTE: The above description of the Tract nominated for lease has been provided and corrected, where required, exclusively by the nomination party. Any mineral lease selected from this Tract and awarded by the Louisiana State Mineral Board shall be without warranty of any kind, either express, implied, or statutory, including, but not limited to, the implied warranties of merchantability and fitness for a particular purpose. Should the mineral lease awarded by the Louisiana State Mineral Board be subsequently modified, cancelled or abrogated due to the existence of conflicting leases, operating agreements, private claims or other future obligations or conditions which may affect all or any portion of the leased Tract, it shall not relieve the Lessee of the obligation to pay any bonus due thereon to the Louisiana State Mineral Board, nor shall the Louisiana State Mineral Board be obligated to refund any consideration paid by the Lessor prior to such modification, cancellation, or abrogation, including, but not limited to, bonuses, rentals and royalties.

NOTE: The State of Louisiana does hereby reserve, and this lease shall be subject to, the imprescriptible right of surface use in the nature of a servitude in favor of the Department of Natural Resources, including its Offices and Commissions, for the sole purpose of implementing, constructing, servicing and maintaining approved coastal zone management and/or restoration projects. Utilization of any and all rights derived under this lease by the mineral lessee, its agents, successors or assigns, shall not interfere with nor hinder the reasonable surface use by the Department of Natural Resources, its Offices or Commissions, as herein above reserved.

Applicant: THEOPHILUS OIL, GAS & LAND SERVICES, LLC

Bidder	Cash Payment	Price/Acre	Rental	Oil	Gas	Other

Legend

-  08040059
-  Wildlife
-  Active_Leases

DOQQ2004

ST CHARLES PARISH

T14S - R22E

TIMKEN WMA

P.O.B.

SL 18963

LAKE SALVADOR

T15S - R22E

N



0 3,000 Feet



TRACT 39753 - Jefferson and St. Charles Parishes, Louisiana

All of the lands now or formerly constituting the beds and bottoms of all water bodies of every nature and description as to which title is vested in the State of Louisiana, together with all islands arising therein and other lands formed by accretion or by reliction, where allowed by law, excepting tax adjudicated lands, and not presently under mineral lease on April 9, 2008, situated in Jefferson and St. Charles Parishes, Louisiana, and more particularly described as follows: Beginning at a point having Coordinates of X = 2,360,666.73 and Y = 414,900.00; thence East 9,829.15 feet to a point having Coordinates of X = 2,370,495.88 and Y = 414,900.00; thence South 6,103.00 feet to the Northeast corner of State Lease No. 18963 having Coordinates of X = 2,370,495.88 and Y = 408,797.00; thence along the boundary of said State Lease No. 18963 the following courses: West 8,795.25 feet to a corner having Coordinates of X = 2,361,700.63 and Y = 408,797.00 and South 23 degrees 19 minutes 55 seconds West 2,610.47 feet to a corner having Coordinates of X = 2,360,666.73 and Y = 406,400.00; thence North 8,500.00 feet to the point of beginning, containing approximately **1,360 acres**, all as more particularly outlined on a plat on file in the Office of Mineral Resources, Department of Natural Resources. All bearings, distances and coordinates are based on Louisiana Coordinate System of 1927, (North or South Zone), where applicable.

NOTE: The above description of the Tract nominated for lease has been provided and corrected, where required, exclusively by the nomination party. Any mineral lease selected from this Tract and awarded by the Louisiana State Mineral Board shall be without warranty of any kind, either express, implied, or statutory, including, but not limited to, the implied warranties of merchantability and fitness for a particular purpose. Should the mineral lease awarded by the Louisiana State Mineral Board be subsequently modified, cancelled or abrogated due to the existence of conflicting leases, operating agreements, private claims or other future obligations or conditions which may affect all or any portion of the leased Tract, it shall not relieve the Lessee of the obligation to pay any bonus due thereon to the Louisiana State Mineral Board, nor shall the Louisiana State Mineral Board be obligated to refund any consideration paid by the Lessor prior to such modification, cancellation, or abrogation, including, but not limited to, bonuses, rentals and royalties.

NOTE: The State of Louisiana does hereby reserve, and this lease shall be subject to, the imprescriptible right of surface use in the nature of a servitude in favor of the Department of Natural Resources, including its Offices and Commissions, for the sole purpose of implementing, constructing, servicing and maintaining approved coastal zone management and/or restoration projects. Utilization of any and all rights derived under this lease by the mineral lessee, its agents, successors or assigns, shall not interfere with nor hinder the reasonable surface use by the Department of Natural Resources, its Offices or Commissions, as herein above reserved.

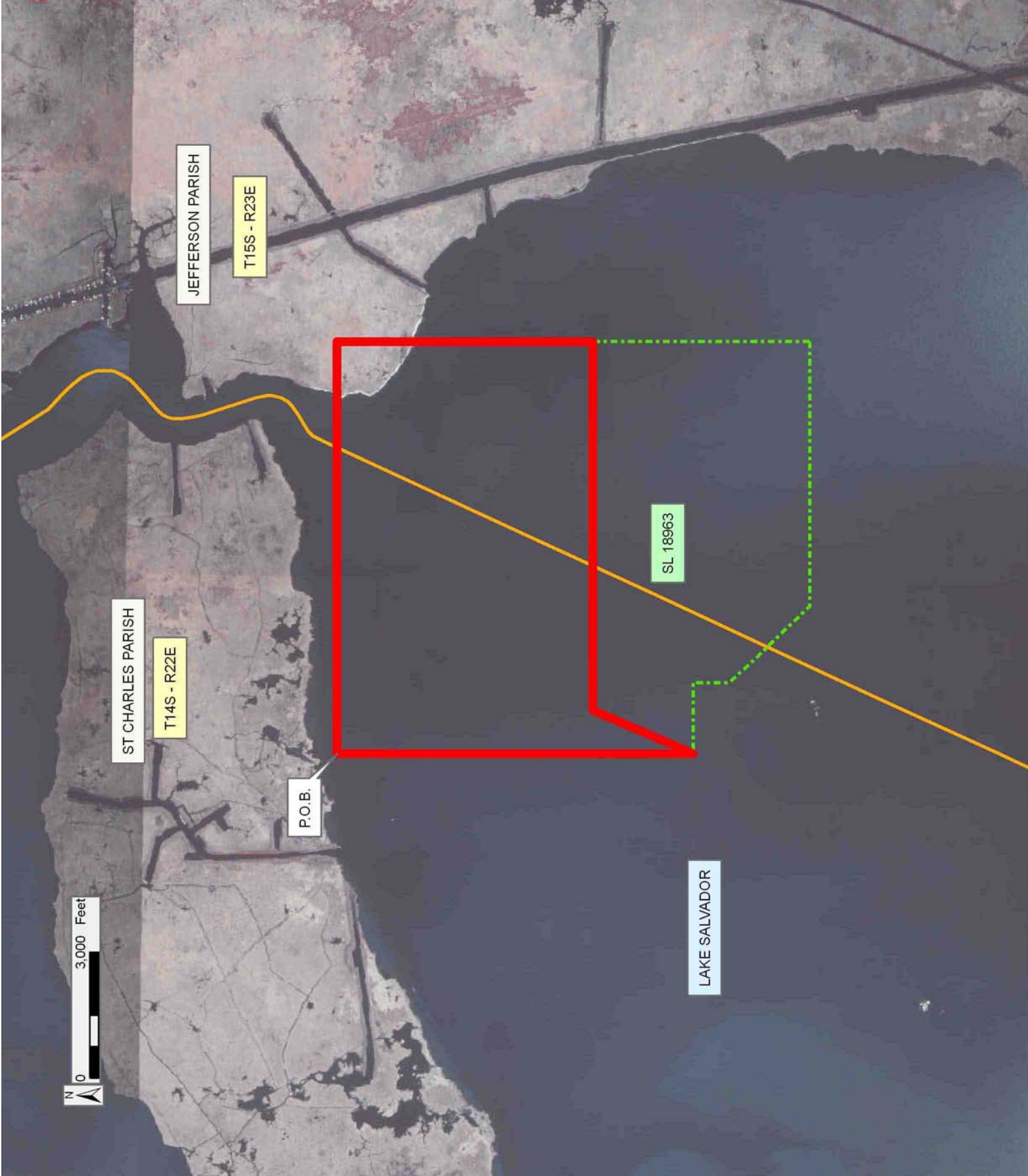
Applicant: THEOPHILUS OIL, GAS & LAND SERVICES, LLC

Bidder	Cash Payment	Price/Acre	Rental	Oil	Gas	Other

Legend

- ▭ 08040060
- - - Active_Leases
- ▭ Counties

DOQQ2004



TRACT 39754 - Jefferson Parish, Louisiana

All of the lands now or formerly constituting the beds and bottoms of all water bodies of every nature and description as to which title is vested in the State of Louisiana, together with all islands arising therein and other lands formed by accretion or by reliction, where allowed by law, excepting tax adjudicated lands, and not presently under mineral lease on April 9, 2008, situated in Jefferson Parish, Louisiana, and more particularly described as follows: Beginning at a point having Coordinates of X = 2,370,495.88 and Y = 414,900.00; thence East 8,500.00 feet to a point having Coordinates of X = 2,378,995.88 and Y = 414,900.00; thence South 8,500.00 feet to a point having Coordinates of X = 2,378,995.88 and Y = 406,400.00; thence West 8,500.00 feet to a point on the East boundary of State Lease No. 18963 having Coordinates of X = 2,370,495.88 and Y = 406,400.00; thence North 2,397.00 feet along the East boundary of said State Lease No. 18963 to its Northeast corner having Coordinates of X = 2,370,495.88 and Y = 408,797.00; thence North 6,103.00 feet to the point of beginning, containing approximately **495 acres**, all as more particularly outlined on a plat on file in the Office of Mineral Resources, Department of Natural Resources. All bearings, distances and coordinates are based on Louisiana Coordinate System of 1927, (North or South Zone), where applicable.

NOTE: The above description of the Tract nominated for lease has been provided and corrected, where required, exclusively by the nomination party. Any mineral lease selected from this Tract and awarded by the Louisiana State Mineral Board shall be without warranty of any kind, either express, implied, or statutory, including, but not limited to, the implied warranties of merchantability and fitness for a particular purpose. Should the mineral lease awarded by the Louisiana State Mineral Board be subsequently modified, cancelled or abrogated due to the existence of conflicting leases, operating agreements, private claims or other future obligations or conditions which may affect all or any portion of the leased Tract, it shall not relieve the Lessee of the obligation to pay any bonus due thereon to the Louisiana State Mineral Board, nor shall the Louisiana State Mineral Board be obligated to refund any consideration paid by the Lessor prior to such modification, cancellation, or abrogation, including, but not limited to, bonuses, rentals and royalties.

NOTE: The State of Louisiana does hereby reserve, and this lease shall be subject to, the imprescriptible right of surface use in the nature of a servitude in favor of the Department of Natural Resources, including its Offices and Commissions, for the sole purpose of implementing, constructing, servicing and maintaining approved coastal zone management and/or restoration projects. Utilization of any and all rights derived under this lease by the mineral lessee, its agents, successors or assigns, shall not interfere with nor hinder the reasonable surface use by the Department of Natural Resources, its Offices or Commissions, as herein above reserved.

Applicant: THEOPHILUS OIL, GAS & LAND SERVICES, LLC

Bidder	Cash Payment	Price/Acre	Rental	Oil	Gas	Other

Legend
08040061
Active_Leases
DOQQ2004

