

TRACT 38992 - Plaquemines Parish, Louisiana

All of the lands now or formerly constituting the beds and bottoms of all water bodies of every nature and description the title of which vests in the State of Louisiana, together with all islands arising therein and other lands formed by accretion or by reliction, where allowed by law, excepting tax adjudicated lands, and not presently under mineral lease on April 11, 2007, situated in Plaquemines Parish, Louisiana, and more particularly described as follows: Beginning at a point having Coordinates of X = 2,474,995.55 and Y = 283,061.08; thence East 10,574.89 feet to Northernmost Northwest corner of State Lease No. 2104 having Coordinates of X = 2,485,570.43 and Y = 283,061.08; thence South 00 degrees 45 minutes 00 seconds East 3,770.04 feet along the boundary of said State Lease No. 2104 to a point on the Northern boundary of State Lease No. 2028, as amended, having Coordinates of X = 2,485,619.78 and Y = 279,291.36; thence along the boundary of said State Lease No. 2028 the following courses: South 88 degrees 03 minutes 41 seconds West 8,272.53 feet to a point having Coordinates of X = 2,477,351.99 and Y = 279,011.50; South 00 degrees 36 minutes 17 seconds East 3,990.46 feet to a point having Coordinates of X = 2,477,394.11 and Y = 275,021.26; South 88 degrees 05 minutes 59 seconds West 4,580.05 feet to a point having Coordinates of X = 2,472,816.58 and Y = 274,869.39 and South 00 degrees 45 minutes 00 seconds East 458.79 feet to the Southernmost Northeast corner of State Lease No. 18148 having Coordinates of X = 2,472,822.59 and Y = 274,410.64; thence North 54 degrees 12 minutes 59 seconds West 1,629.06 feet along the boundary of said State Lease No. 18148 to a Southern corner of State Lease No. 18671 having Coordinates of X = 2,471,501.05 and Y = 275,363.19; thence along the boundary of said State Lease No. 18671 the following courses: North 79 degrees 20 minutes 54 seconds East 5,044.58 feet to a point having Coordinates of X = 2,476,458.70 and Y = 276,295.63; North 05 degrees 50 minutes 38 seconds West 1,962.36 feet to a point having Coordinates of X = 2,476,258.90 and Y = 278,247.78 and North 86 degrees 02 minutes 56 seconds West 1,266.36 feet to a point having Coordinates of X = 2,474,995.55 and Y = 278,335.05; thence North 4,726.03 feet to the point of beginning, containing approximately **590 acres**, all as more particularly outlined on a plat on file in the Office of Mineral Resources, Department of Natural Resources. All bearings, distances and coordinates are based on Louisiana Coordinate System of 1927, (North or South Zone), where applicable.

NOTE: The above description of the Tract nominated for lease has been provided and corrected, where required, exclusively by the nomination party. Any mineral lease selected from this Tract and awarded by the Louisiana State Mineral Board shall be without warranty of any kind, either express, implied, or statutory, including, but not limited to, the implied warranties of merchantability and fitness for a particular purpose. Should the mineral lease awarded by the Louisiana State Mineral Board be subsequently modified, cancelled or abrogated due to the existence of conflicting leases, operating agreements, private claims or other future obligations or conditions which may affect all or any portion

of the leased Tract, it shall not relieve the Lessee of the obligation to pay any bonus due thereon to the Louisiana State Mineral Board, nor shall the Louisiana State Mineral Board be obligated to refund any consideration paid by the Lessor prior to such modification, cancellation, or abrogation, including, but not limited to, bonuses, rentals and royalties.

NOTE: The State of Louisiana does hereby reserve, and this lease shall be subject to, the imprescriptible right of surface use in the nature of a servitude in favor of the Department of Natural Resources, including its Offices and Commissions, for the sole purpose of implementing, constructing, servicing and maintaining approved coastal zone management and/or restoration projects. Utilization of any and all rights derived under this lease by the mineral lessee, its agents, successors or assigns, shall not interfere with nor hinder the reasonable surface use by the Department of Natural Resources, its Offices or Commissions, as herein above reserved.

NOTE: The Department of Wildlife and Fisheries has designated certain areas in the coastal waters of the State of Louisiana as Oyster Seed Bed Areas. The exact location of those Seed Bed Areas must be obtained from the Department of Wildlife and Fisheries and any work done under a mineral lease from the State of Louisiana may necessarily be conducted in conformity with the rules and regulations promulgated by the said Department of Wildlife and Fisheries for Oyster Seed Bed Areas.

Applicant: ACADIAN LAND SERVICES, LLC

Bidder	Cash Payment	Price/Acre	Rental	Oil	Gas	Other

07040042

Active_Lease

DOQQ2004

PLAQUEMINES PARISH

BAY BATISTE

P.O.B.

BARATARIA BAY

SL 2104

SL 2028

SL 18671

SL 18148



TRACT 38993 - Plaquemines Parish, Louisiana

All of the lands now or formerly constituting the beds and bottoms of all water bodies of every nature and description the title of which vests in the State of Louisiana, together with all islands arising therein and other lands formed by accretion or by reliction, where allowed by law, excepting tax adjudicated lands, and not presently under mineral lease on April 11, 2007, situated in Plaquemines Parish, Louisiana, and more particularly described as follows: Beginning at a point on the Western boundary of State Lease No. 18907 having Coordinates of X = 2,475,008.73 and Y = 255,762.10; thence West 10,709.82 feet to a point having Coordinates of X = 2,464,298.91 and Y = 255,762.10; thence North 9,323.33 feet to a point having Coordinates of X = 2,464,298.91 and Y = 265,085.43; thence East 9,231.09 feet to a point having Coordinates of X = 2,473,530.00 and Y = 265,085.43; thence North 3,125.09 feet to a point on the Southern boundary of State Lease No. 2028, as amended, having Coordinates of X = 2,473,530.00 and Y = 268,210.52; thence North 89 degrees 15 minutes 00 seconds East 1,293.81 feet along the Southern boundary of said State Lease No. 2028 to the Northwest corner of said State Lease No. 18907 having Coordinates of X = 2,474,823.70 and Y = 268,227.46; thence South 00 degrees 16 minutes 31 seconds East 1,208.36 feet along the boundary of said State Lease No. 18907 to a point on the Westernmost boundary of State Lease No. 2104 having Coordinates of X = 2,474,829.51 and Y = 267,019.11; thence South 00 degrees 45 minutes 00 seconds East 6,600 feet along the boundaries of said State Lease No. 18907 and said State Lease No. 2104 to a point having Coordinates of X = 2,474,915.90 and Y = 260,419.67; thence South 01 degree 08 minutes 31 seconds East 4,658.50 feet along the Western boundary of said State Lease No. 18907 to the point of beginning, containing approximately **2,353 acres**, all as more particularly outlined on a plat on file in the Office of Mineral Resources, Department of Natural Resources. All bearings, distances and coordinates are based on Louisiana Coordinate System of 1927, (North or South Zone), where applicable.

NOTE: The above description of the Tract nominated for lease has been provided and corrected, where required, exclusively by the nomination party. Any mineral lease selected from this Tract and awarded by the Louisiana State Mineral Board shall be without warranty of any kind, either express, implied, or statutory, including, but not limited to, the implied warranties of merchantability and fitness for a particular purpose. Should the mineral lease awarded by the Louisiana State Mineral Board be subsequently modified, cancelled or abrogated due to the existence of conflicting leases, operating agreements, private claims or other future obligations or conditions which may affect all or any portion of the leased Tract, it shall not relieve the Lessee of the obligation to pay any bonus due thereon to the Louisiana State Mineral Board, nor shall the Louisiana State Mineral Board be obligated to refund any consideration paid by the Lessor prior to such modification, cancellation, or abrogation, including, but not limited to, bonuses, rentals and royalties.

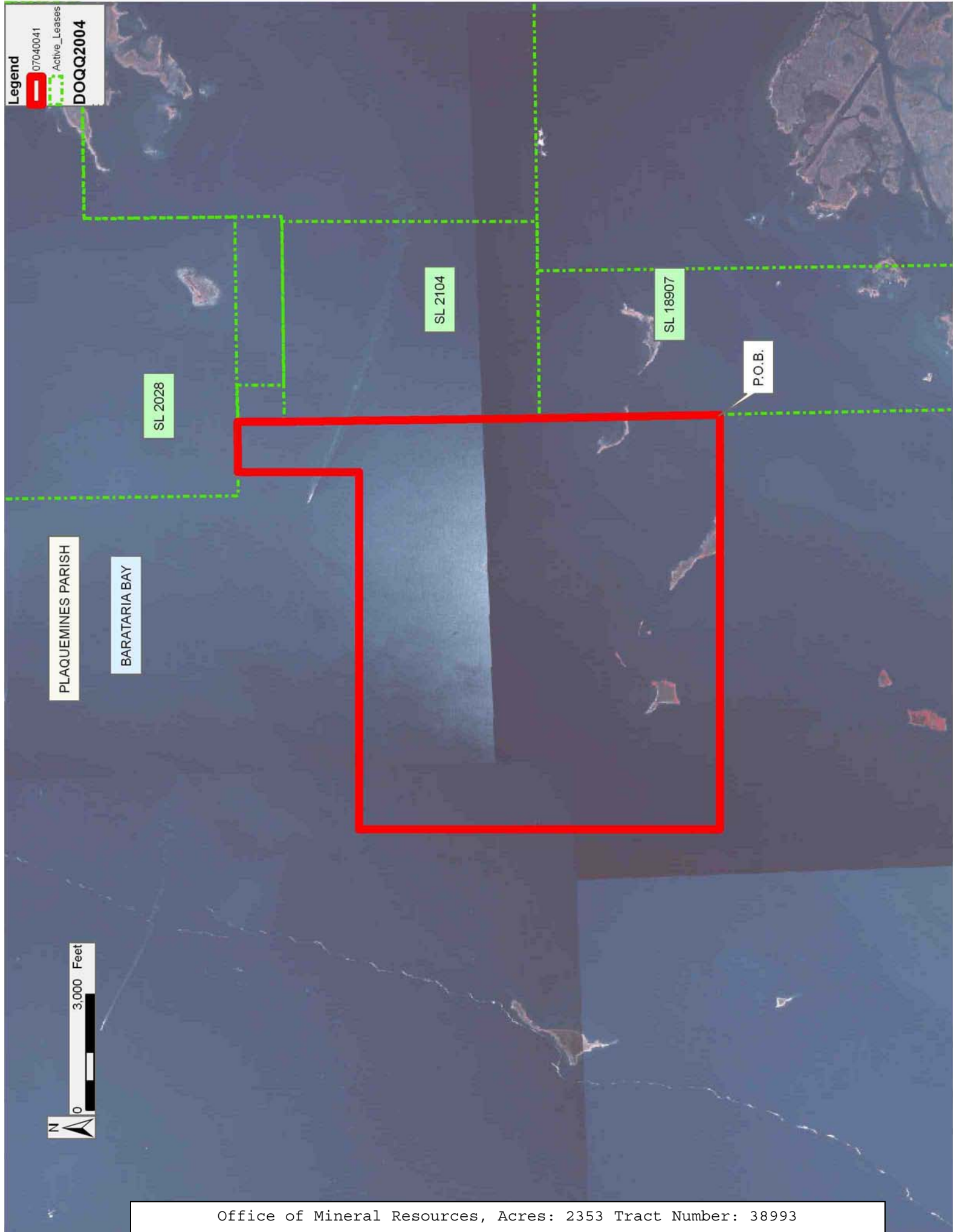
NOTE: The State of Louisiana does hereby reserve, and this lease shall be subject to, the imprescriptible right of surface use in the nature of a servitude in favor of the Department of Natural Resources, including its Offices and Commissions, for the sole purpose of implementing, constructing, servicing and maintaining approved coastal zone management and/or restoration projects. Utilization of any and all rights derived under this lease by the mineral lessee, its agents, successors or assigns, shall not interfere with nor hinder the reasonable surface use by the Department of Natural Resources, its Offices or Commissions, as herein above reserved.

NOTE: The Department of Wildlife and Fisheries has designated certain areas in the coastal waters of the State of Louisiana as Oyster Seed Bed Areas. The exact location of those Seed Bed Areas must be obtained from the Department of Wildlife and Fisheries and any work done under a mineral lease from the State of Louisiana may necessarily be conducted in conformity with the rules and regulations promulgated by the said Department of Wildlife and Fisheries for Oyster Seed Bed Areas.

Applicant: ACADIAN LAND SERVICES, LLC

Bidder	Cash Payment	Price/Acre	Rental	Oil	Gas	Other

Legend
07040041
Active_Leases
DOQQ2004



TRACT 38994 - Plaquemines Parish, Louisiana

All of the lands now or formerly constituting the beds and bottoms of all water bodies of every nature and description the title of which vests in the State of Louisiana, together with all islands arising therein and other lands formed by accretion or by reliction, where allowed by law, excepting tax adjudicated lands, and not presently under mineral lease on April 11, 2007, situated in Plaquemines Parish, Louisiana, and more particularly described as follows: Beginning at the Northernmost Northeast corner of State Lease No. 18909, also being the Southeast corner of State Lease No. 17266 having Coordinates of X = 2,504,630.00 and Y = 258,710.00; thence North 7,240.00 feet along the East boundary of said State Lease No. 17266 to its Northeast corner, also being the Southeast corner of State Lease No. 18911 having Coordinates of X = 2,504,630.00 and Y = 265,950.00; thence North 84 degrees 43 minutes 44 seconds East 7,574.97 feet to a point having Coordinates of X = 2,512,172.93 and Y = 266,645.92; thence South 00 degrees 19 minutes 12 seconds East 13,803.49 feet to a point having Coordinates of X = 2,512,250.00 and Y = 252,842.64; thence South 87 degrees 48 minutes 48 seconds West 4,853.53 feet to a point on the Easternmost boundary of State Lease No 18909 having Coordinates of X = 2,507,400.00 and Y = 252,657.46; thence along the boundary of said State Lease No. 18909 the following courses: North 742.54 feet to a point having Coordinates of X = 2,507,400.00 and Y = 253,400.00; West 2,751.14 feet to a point having Coordinates of X = 2,504,648.86 and Y = 253,400.00 and North 00 degrees 12 minutes 12 seconds West 5,310.03 feet to the point of beginning, containing approximately **1,902 acres**, all as more particularly outlined on a plat on file in the Office of Mineral Resources, Department of Natural Resources. All bearings, distances and coordinates are based on Louisiana Coordinate System of 1927, (North or South Zone), where applicable.

NOTE: The above description of the Tract nominated for lease has been provided and corrected, where required, exclusively by the nomination party. Any mineral lease selected from this Tract and awarded by the Louisiana State Mineral Board shall be without warranty of any kind, either express, implied, or statutory, including, but not limited to, the implied warranties of merchantability and fitness for a particular purpose. Should the mineral lease awarded by the Louisiana State Mineral Board be subsequently modified, cancelled or abrogated due to the existence of conflicting leases, operating agreements, private claims or other future obligations or conditions which may affect all or any portion of the leased Tract, it shall not relieve the Lessee of the obligation to pay any bonus due thereon to the Louisiana State Mineral Board, nor shall the Louisiana State Mineral Board be obligated to refund any consideration paid by the Lessor prior to such modification, cancellation, or abrogation, including, but not limited to, bonuses, rentals and royalties.

NOTE: The State of Louisiana does hereby reserve, and this lease shall be subject to, the imprescriptible right of surface use in the nature of a servitude in favor of the Department of Natural Resources, including its

Offices and Commissions, for the sole purpose of implementing, constructing, servicing and maintaining approved coastal zone management and/or restoration projects. Utilization of any and all rights derived under this lease by the mineral lessee, its agents, successors or assigns, shall not interfere with nor hinder the reasonable surface use by the Department of Natural Resources, its Offices or Commissions, as herein above reserved.

NOTE: The Department of Wildlife and Fisheries has designated certain areas in the coastal waters of the State of Louisiana as Oyster Seed Bed Areas. The exact location of those Seed Bed Areas must be obtained from the Department of Wildlife and Fisheries and any work done under a mineral lease from the State of Louisiana may necessarily be conducted in conformity with the rules and regulations promulgated by the said Department of Wildlife and Fisheries for Oyster Seed Bed Areas.

Applicant: ACADIAN LAND SERVICES, LLC

Bidder	Cash Payment	Price/Acre	Rental	Oil	Gas	Other

Legend
07040039
Active_Leases
DOQQ2004

PLAQUEMINES PARISH

LAKE WASHINGTON

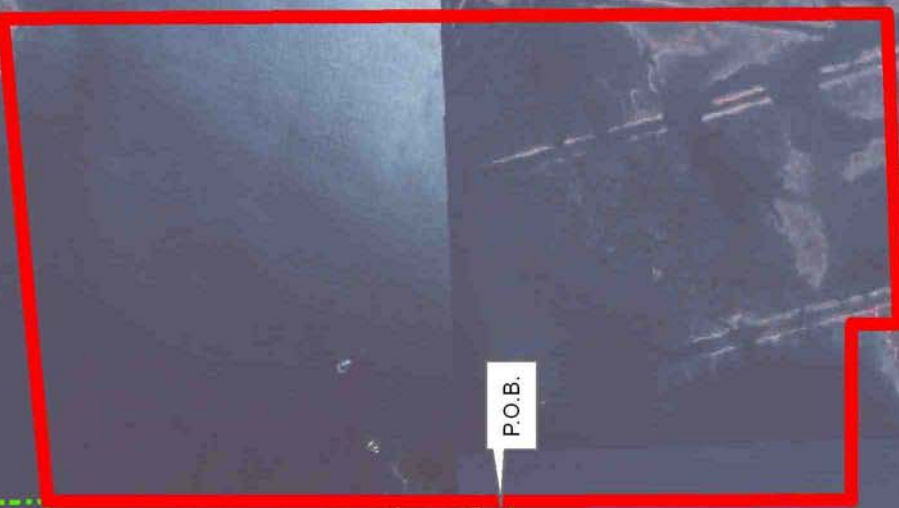
GARDEN BAY

SL 18911

SL 17266

SL 18909

P.O.B.



TRACT 38995 - Terrebonne Parish, Louisiana

All of the lands now or formerly constituting the beds and bottoms of all water bodies of every nature and description the title of which vests in the State of Louisiana, together with all islands arising therein and other lands formed by accretion or by reliction, where allowed by law, excepting tax adjudicated lands, and not presently under mineral lease on April 11, 2007, situated in Terrebonne Parish, Louisiana, and more particularly described as follows: Beginning at the Southwest corner of State Lease No. 18234, having Coordinates of X = 2,260,583.59 and Y = 268,755.10; thence East 6,204.94 feet along the South boundary of said State Lease No. 18234 to a point having Coordinates of X = 2,266,788.53 and Y = 268,755.10; thence South 5,460.23 feet to a point on the North boundary of State Lease No. 18870, having Coordinates of X = 2,266,788.53 and Y = 263,294.87; thence along the North and West boundaries of said State Lease No. 18870 the following courses and distances: West 4,500.00 feet to a corner having Coordinates of X = 2,262,288.53 and Y = 263,294.87, South 4,500.00 feet to a corner having Coordinates of X = 2,262,288.53 and Y = 258,794.87, West 1,280.10 feet to a corner having Coordinates of X = 2,261,008.43 and Y = 258,794.87 and South 00 degree 11 minutes 31 seconds East 5,498.32 feet to a point having Coordinates of X = 2,261,026.85 and Y = 253,296.58; thence West 9,314.12 feet to a point having Coordinates of X = 2,251,712.73 and Y = 253,296.58; thence Northerly approximately 5,500 feet to the most Southern Southeast corner of State Lease No. 328, as amended; thence along the South and East boundaries of said State Lease No. 328 the following courses and distances: Northerly approximately 985 feet, Easterly approximately 5,231 feet, Northerly approximately 3,641 feet, Easterly approximately 611 feet, Northerly approximately 3,607 feet, Northeasterly approximately 607 feet, Northwesterly approximately 1,035 feet and Northerly approximately 526 feet to a point on the East boundary of said State Lease No. 328 having a Coordinate of Y = 268,755.10; thence East approximately 3,203 feet to the point of beginning, **LESS AND EXCEPT** any portion of State Lease No. 328, as amended, that may lie within the above described tract, containing approximately **750 acres**, all as more particularly outlined on a plat on file in the Office of Mineral Resources, Department of Natural Resources. All bearings, distances and coordinates are based on Louisiana Coordinate System of 1927, (North or South Zone), where applicable.

NOTE: The above description of the Tract nominated for lease has been provided and corrected, where required, exclusively by the nomination party. Any mineral lease selected from this Tract and awarded by the Louisiana State Mineral Board shall be without warranty of any kind, either express, implied, or statutory, including, but not limited to, the implied warranties of merchantability and fitness for a particular purpose. Should the mineral lease awarded by the Louisiana State Mineral Board be subsequently modified, cancelled or abrogated due to the existence of conflicting leases, operating agreements, private claims or other future obligations or conditions which may affect all or any portion of the leased Tract, it shall not relieve the Lessee of the obligation to

pay any bonus due thereon to the Louisiana State Mineral Board, nor shall the Louisiana State Mineral Board be obligated to refund any consideration paid by the Lessor prior to such modification, cancellation, or abrogation, including, but not limited to, bonuses, rentals and royalties.

NOTE: The State of Louisiana does hereby reserve, and this lease shall be subject to, the imprescriptible right of surface use in the nature of a servitude in favor of the Department of Natural Resources, including its Offices and Commissions, for the sole purpose of implementing, constructing, servicing and maintaining approved coastal zone management and/or restoration projects. Utilization of any and all rights derived under this lease by the mineral lessee, its agents, successors or assigns, shall not interfere with nor hinder the reasonable surface use by the Department of Natural Resources, its Offices or Commissions, as herein above reserved.

NOTE: The Department of Wildlife and Fisheries has designated certain areas in the coastal waters of the State of Louisiana as Oyster Seed Bed Areas. The exact location of those Seed Bed Areas must be obtained from the Department of Wildlife and Fisheries and any work done under a mineral lease from the State of Louisiana may necessarily be conducted in conformity with the rules and regulations promulgated by the said Department of Wildlife and Fisheries for Oyster Seed Bed Areas.

Applicant: THEOPHILUS OIL, GAS & LAND SERVICES, LLC

Bidder	Cash Payment	Price/Acre	Rental	Oil	Gas	Other

07040027

Active Lease

DOQQ2004

TERREBONNE PARISH

SL 18234

SL 18870

P.O.B.

BAYOU TAMBOUR

BAYOU BARRE

SL 328

MADISON BAY



TRACT 38996 - Portion of Block 54, Main Pass Area, Revised, Plaquemines Parish, Louisiana

All of the lands now or formerly constituting the beds and bottoms of all water bodies of every nature and description the title of which vests in the State of Louisiana, together with all islands arising therein and other lands formed by accretion or by reliction, where allowed by law, excepting tax adjudicated lands, and not presently under mineral lease on April 11, 2007, situated in Plaquemines Parish, Louisiana, and more particularly described as follows: Beginning at a point on the North boundary of State Lease No. 18852, also being a point on a South line of Block 54, Main Pass Area, Revised, having Coordinates of X = 2,692,476.83 and Y = 244,681.36; thence North 46 degrees 16 minutes 00 seconds West 14,759.02 feet along the said South line of said Block 54 to its Northernmost Southwest corner having Coordinates of X = 2,681,812.48 and Y = 254,884.31; thence East 3,377.39 feet to a point on the Louisiana Coastline, as decreed by the Supreme Court of the United States, as determined by a Special Master appointed therein, in litigation styled *United States v. State of Louisiana et al No. 9 Original*, in 1975, having Coordinates of X = 2,685,189.87 and Y = 254,884.31; thence along the said Louisiana Coastline the following courses: Southeasterly on a straight line to a point having Coordinates of X = 2,688,235 and Y = 252,215; Southeasterly on a straight line to a point having Coordinates of X = 2,689,305 and Y = 250,395 and Southeasterly on a straight line to the Northeast corner of said State Lease No. 18852 having Coordinates of X = 2,693,283.83 and Y = 244,910.62; thence South 74 degrees 08 minutes 27 seconds West 838.94 feet along the North boundary of said State Lease No. 18852 to the point of beginning, containing approximately **594.08 acres**, all as more particularly outlined on a plat on file in the Office of Mineral Resources, Department of Natural Resources. All bearings, distances and coordinates are based on Louisiana Coordinate System of 1927, (North or South Zone), where applicable.

NOTE: The above description of the Tract nominated for lease has been provided and corrected, where required, exclusively by the nomination party. Any mineral lease selected from this Tract and awarded by the Louisiana State Mineral Board shall be without warranty of any kind, either express, implied, or statutory, including, but not limited to, the implied warranties of merchantability and fitness for a particular purpose. Should the mineral lease awarded by the Louisiana State Mineral Board be subsequently modified, cancelled or abrogated due to the existence of conflicting leases, operating agreements, private claims or other future obligations or conditions which may affect all or any portion of the leased Tract, it shall not relieve the Lessee of the obligation to pay any bonus due thereon to the Louisiana State Mineral Board, nor shall the Louisiana State Mineral Board be obligated to refund any consideration paid by the Lessor prior to such modification, cancellation, or abrogation, including, but not limited to, bonuses, rentals and royalties.

NOTE: The State of Louisiana does hereby reserve, and this lease shall be subject to, the imprescriptible right of surface use in the nature of a servitude in favor of the Department of Natural Resources, including its Offices and Commissions, for the sole purpose of implementing, constructing, servicing and maintaining approved coastal zone management and/or restoration projects. Utilization of any and all rights derived under this lease by the mineral lessee, its agents, successors or assigns, shall not interfere with nor hinder the reasonable surface use by the Department of Natural Resources, its Offices or Commissions, as herein above reserved.

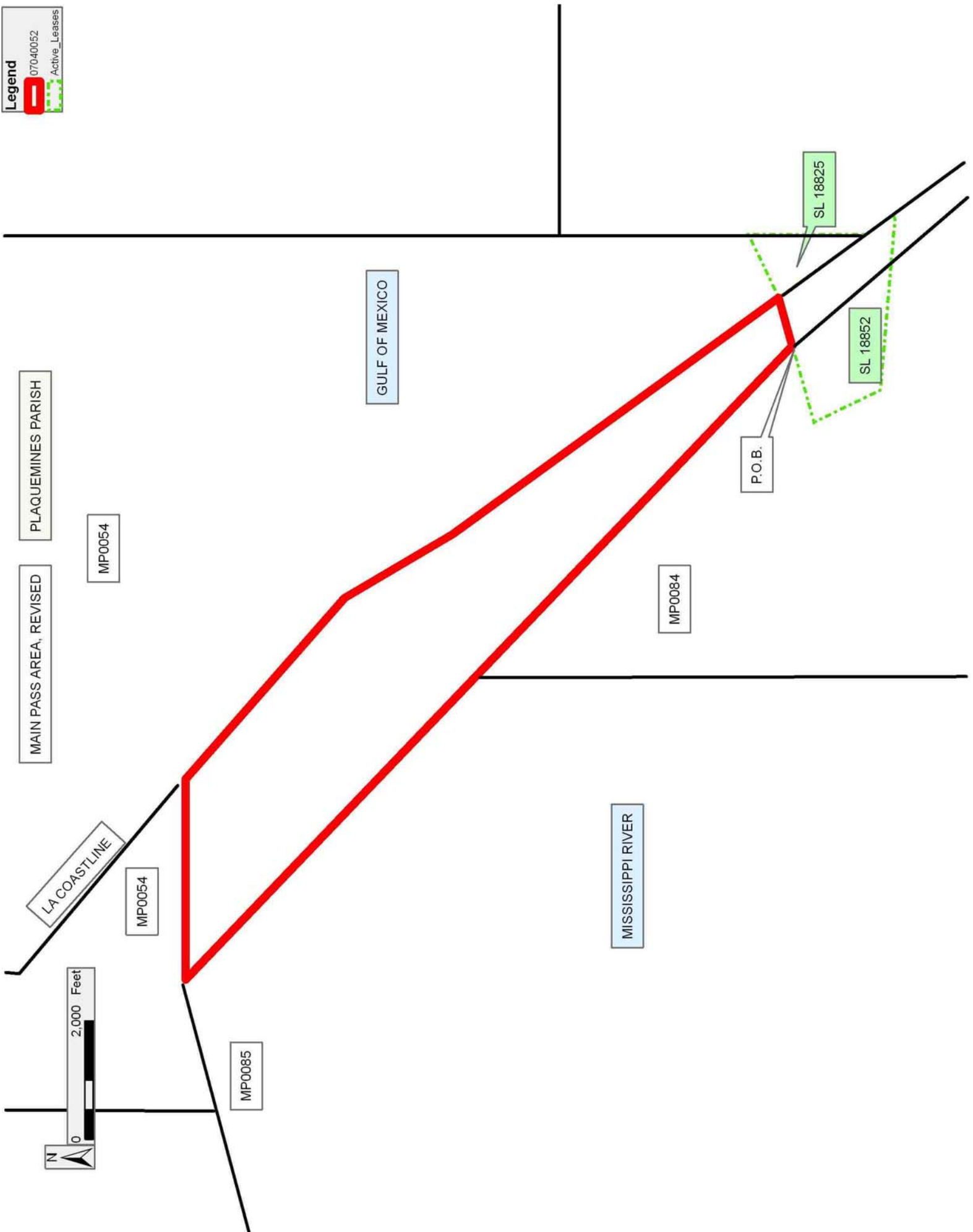
NOTE: The Department of Wildlife and Fisheries has designated certain areas in the coastal waters of the State of Louisiana as Oyster Seed Bed Areas. The exact location of those Seed Bed Areas must be obtained from the Department of Wildlife and Fisheries and any work done under a mineral lease from the State of Louisiana may necessarily be conducted in conformity with the rules and regulations promulgated by the said Department of Wildlife and Fisheries for Oyster Seed Bed Areas.

Applicant: MINERAL SERVICES, INC.

Bidder	Cash Payment	Price/Acre	Rental	Oil	Gas	Other

Legend

07040052
Active_Leases



Office of Mineral Resources, Acres: 594.08 Tract Number: 38996

TRACT 38997 - Plaquemines Parish, Louisiana

All of the lands now or formerly constituting the beds and bottoms of all water bodies of every nature and description the title of which vests in the State of Louisiana, together with all islands arising therein and other lands formed by accretion or by reliction, where allowed by law, excepting tax adjudicated lands, and not presently under mineral lease on April 11, 2007, situated in Plaquemines Parish, Louisiana, and more particularly described as follows: Beginning at a point on the Western boundary of State Lease No. 18907 having Coordinates of X = 2,475,008.73 and Y = 255,762.10; thence South 01 degree 08 minutes 31 seconds East 6,790.17 feet along the boundary of said State Lease No. 18907 to its Southwest corner, also being the Southernmost Northwest corner of State Lease No. 18908 having Coordinates of X = 2,475,144.05 and Y = 248,973.28; thence South 01 degree 08 minutes 31 seconds East 2,807.04 feet along the Western boundary of said State Lease No. 18908 to a point having Coordinates of X = 2,475,199.99 and Y = 246,166.79; thence South 87 degrees 56 minutes 41 seconds West 10,810.79 feet to a point having Coordinates of X = 2,464,396.15 and Y = 245,779.08; thence North 00 degrees 33 minutes 29 seconds West 9,983.49 feet to a point having Coordinates of X = 2,464,298.91 and Y = 255,762.10; thence East 10,709.82 feet to the point of beginning, containing approximately **2,409 acres**, all as more particularly outlined on a plat on file in the Office of Mineral Resources, Department of Natural Resources. All bearings, distances and coordinates are based on Louisiana Coordinate System of 1927, (North or South Zone), where applicable.

NOTE: The above description of the Tract nominated for lease has been provided and corrected, where required, exclusively by the nomination party. Any mineral lease selected from this Tract and awarded by the Louisiana State Mineral Board shall be without warranty of any kind, either express, implied, or statutory, including, but not limited to, the implied warranties of merchantability and fitness for a particular purpose. Should the mineral lease awarded by the Louisiana State Mineral Board be subsequently modified, cancelled or abrogated due to the existence of conflicting leases, operating agreements, private claims or other future obligations or conditions which may affect all or any portion of the leased Tract, it shall not relieve the Lessee of the obligation to pay any bonus due thereon to the Louisiana State Mineral Board, nor shall the Louisiana State Mineral Board be obligated to refund any consideration paid by the Lessor prior to such modification, cancellation, or abrogation, including, but not limited to, bonuses, rentals and royalties.

NOTE: The State of Louisiana does hereby reserve, and this lease shall be subject to, the imprescriptible right of surface use in the nature of a servitude in favor of the Department of Natural Resources, including its Offices and Commissions, for the sole purpose of implementing, constructing, servicing and maintaining approved coastal zone management and/or restoration projects. Utilization of any and all rights derived under this lease by the mineral lessee, its agents, successors or assigns,

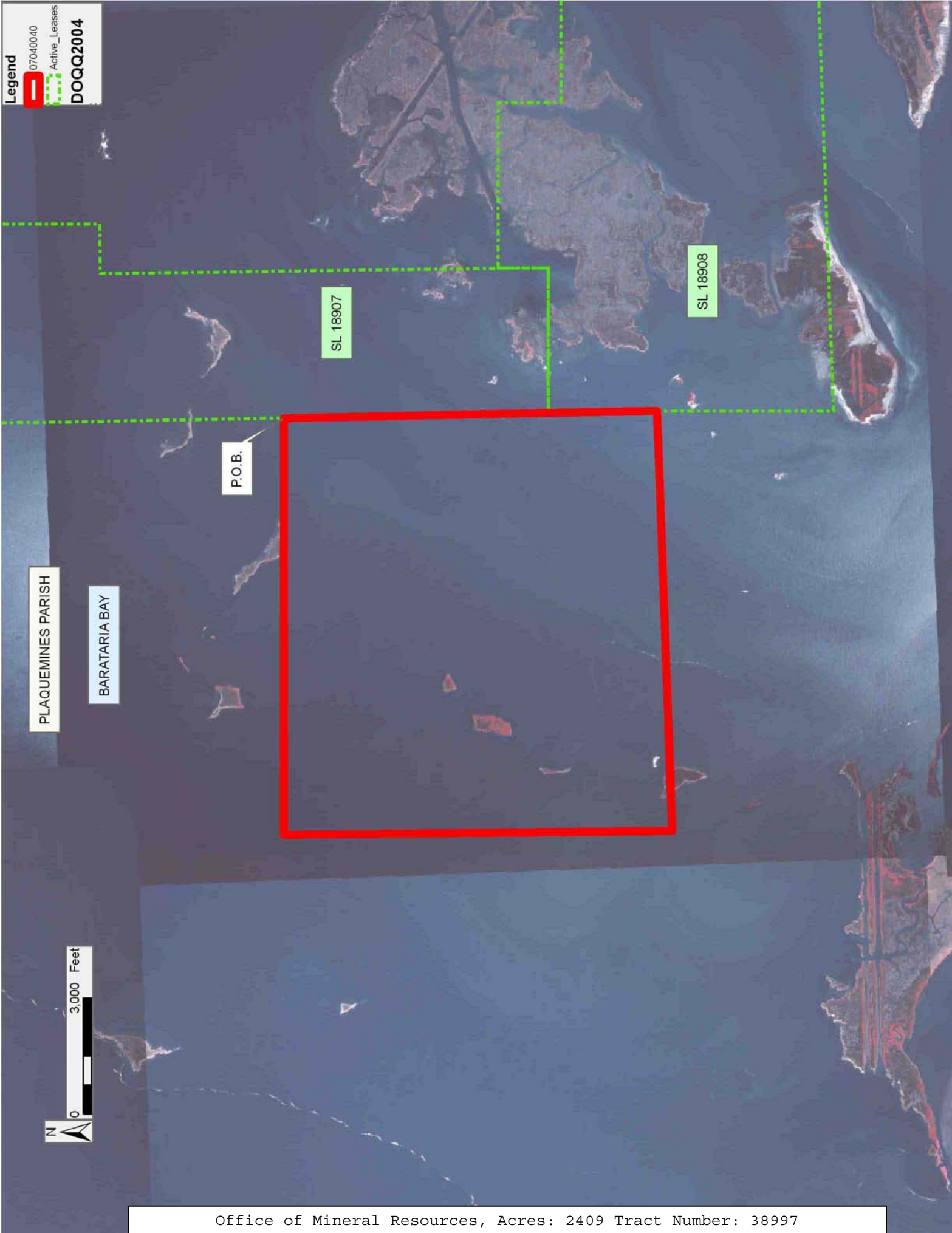
shall not interfere with nor hinder the reasonable surface use by the Department of Natural Resources, its Offices or Commissions, as herein above reserved.

NOTE: The Department of Wildlife and Fisheries has designated certain areas in the coastal waters of the State of Louisiana as Oyster Seed Bed Areas. The exact location of those Seed Bed Areas must be obtained from the Department of Wildlife and Fisheries and any work done under a mineral lease from the State of Louisiana may necessarily be conducted in conformity with the rules and regulations promulgated by the said Department of Wildlife and Fisheries for Oyster Seed Bed Areas.

Applicant: ACADIAN LAND SERVICES, LLC

Bidder	Cash Payment	Price/Acre	Rental	Oil	Gas	Other

Legend
07040040
Active_Leases
DOQQ2004



TRACT 38998 - Plaquemines Parish, Louisiana

All of the lands now or formerly constituting the beds and bottoms of all water bodies of every nature and description the title of which vests in the State of Louisiana, together with all islands arising therein and other lands formed by accretion or by reliction, where allowed by law, excepting tax adjudicated lands, and not presently under mineral lease on April 11, 2007, situated in Plaquemines Parish, Louisiana, and more particularly described as follows: Beginning at a point having Coordinates of X = 2,512,907.89 and Y = 252,867.76; thence South 00 degrees 23 minutes 24 seconds East 14,957.76 feet to a point having Coordinates of X = 2,513,009.67 and Y = 237,910.36; thence South 87 degrees 36 minutes 00 seconds West 4,167.80 feet to the Northeast corner of the Southernmost portion of State Lease No. 10854, as amended, having Coordinates of X = 2,508,845.53 and Y = 237,735.83; thence South 87 degrees 56 minutes 29 seconds West 2,405.08 feet along the Northern boundary of the Southernmost portion of said State Lease No. 10854 to its Northwest corner having Coordinates of X = 2,506,442.00 and Y = 237,649.43; thence South 88 degrees 05 minutes 41 seconds West 4,219.61 feet to a point on a Eastern boundary of the Southernmost portion of State Lease No. 1753, as amended, having Coordinates of X = 2,502,224.72 and Y = 237,509.13; thence following the boundary of said State Lease No. 1753 the following courses: North 00 degrees 04 minutes 56 seconds West 3,060.87 feet to a point having Coordinates of X = 2,502,220.33 and Y = 240,570.00; North 89 degrees 15 minutes 00 seconds East 2,663.66 feet to the Northwest corner of the Northernmost portion of State Lease No. 10854 having Coordinates of X = 2,504,883.76 and Y = 240,604.86; thence along the boundary of said State Lease No. 10854 the following courses: along an arc to the right having a radius of 52,752.28 feet and center at X = 2,455,769.83 and Y = 221,353.26 to a point having Coordinates of X = 2,505,480.24 and Y = 239,007.66; along an arc to the left having a radius of 3,072.55 feet and a center at X = 2,508,243.41 and Y = 240,351.32 to a point having Coordinates of X = 2,505,880.24 and Y = 238,387.66; along an arc to the left having a radius of 2,723.56 feet and center at X = 2,507,801.47 and Y = 240,318.11 to a point having Coordinates of X = 2,505,946.26 and Y = 238,324.13; North 49 degrees 00 minutes 00 seconds East 1,321.44 feet to a point having Coordinates of X = 2,506,943.58 and Y = 239,191.07; along an arc to the left having a radius of 504.23 feet and a center of X = 2,507,131.35 and Y = 239,659.03 to a point having Coordinates of X = 2,507,055.14 and Y = 239,160.60; South 81 degrees 18 minutes 05 seconds East 463.50 feet to a point having Coordinates of X = 2,507,513.31 and Y = 239,090.50; along an arc to the left having a radius of 3,725.00 feet and a center at X = 2,507,917.20 and Y = 242,793.53 to a point having Coordinates of X = 2,507,913.89 and Y = 239,068.53; along an arc to the left having a radius of 2,047.76 feet and a center of X = 2,506,901.60 and Y = 240,848.59 to a point having Coordinates of X = 2,508,312.12 and Y = 239,364.08; North 85 degrees 12 minutes 40 seconds East 68.68 feet; North 74 degrees 51 minutes 27 seconds East 86.73 feet; North 69 degrees 43 minutes 08 seconds East 70.91 feet, North 76 degrees 36 minutes 58 seconds East 76.84 feet; North 73 degrees 20 minutes 56 seconds East 75.76 feet to

a point on the Operating Agreement No. 195, being the same boundary of the LW R RB SU created in Field Order 149-FF-2, having Coordinates of X = 2,508,678.13 and Y = 239,456.54; thence following the boundary of said Operating Agreement No. 195 the following courses: North 77 degrees 04 minutes 45 seconds East 62.79 feet; North 72 degrees 15 minutes 59 seconds East 68.19 feet; North 57 degrees 40 minutes 29 seconds East 86.33 feet; North 47 degrees 44 minutes 29 seconds East 71.57 feet; North 34 degrees 41 minutes 36 seconds East 117.77 feet; North 18 degrees 41 minutes 08 seconds East 51.80 feet; North 26 degrees 58 minutes 39 seconds East 45.37 feet; North 17 degrees 03 minutes 05 seconds East 51.18 feet; North 03 degrees 13 minutes 43 seconds West 62.13 feet; North 19 degrees 27 minutes 05 seconds West 66.61 feet; North 26 degrees 06 minutes 45 seconds West 59.13 feet; North 18 degrees 17 minutes 57 seconds West 36.90 feet; North 03 degrees 36 minutes 06 seconds West 32.21 feet; North 35 degrees 08 minutes 54 seconds East 33.86 feet; North 31 degrees 28 minutes 24 seconds East 54.37 feet; North 24 degrees 35 minutes 30 seconds East 60.55 feet; North 02 degrees 44 minutes 59 seconds East 55.29 feet; North 18 degrees 01 minutes 21 seconds West 60.60 feet; North 31 degrees 11 minutes 42 seconds West 51.62 feet; North 35 degrees 46 minutes 28 seconds West 81.15 feet; North 54 degrees 51 minutes 16 seconds West 67.68 feet; along an arc to the left having a radius of 2,047.76 feet and a center of X = 2,506,901.60 and Y = 240,848.60 to a point having Coordinates of X = 2,508,914.74 and Y = 240,473.61 and along an arc to the left having a radius of 24,979.99 feet and a center of X = 2,499,591.77 and Y = 217,298.57 to a Northeast corner of the Northernmost portion of said State Lease No. 10854 having Coordinates of X = 2,508,851.82 and Y = 240,498.82; thence following the boundary of said State Lease No. 10854 along an arc to the left having a radius of 24,979.99 feet and a center of X = 2,499,590.62 and Y = 217,299.04 to a point on the boundary of State Lease No. 12415, as amended, having Coordinates of X = 2,508,120.25 and Y = 240,777.65; thence along the boundary of said State Lease No. 12415 following courses: along an arc to the right having a radius of 1,810.01 feet and a center of X = 2,508,312.58 and Y = 242,577.42 to a point having Coordinates of X = 2,506,845.25 and Y = 241,517.65 and South 60 degrees 22 minutes 08 seconds West 263.85 feet to a point on the boundary of State Lease No. 1753 having Coordinates of X = 2,506,615.90 and Y = 241,387.22; thence North 00 degrees 02 minutes 12 seconds West 819.41 feet along the boundary of said State Lease No. 1753 to the Southernmost Southwest corner of State Lease No. 18909 having Coordinates of X = 2,506,615.38 and Y = 242,206.62; thence along the boundary of said State Lease No. 18909 the following courses: East 784.62 feet to a point having Coordinates of X = 2,507,400.00 and Y = 242,206.62 and North 10,450.84 feet to a point having Coordinates of X = 2,507,400.00 and Y = 252,657.46; thence North 87 degrees 48 minutes 48 seconds East 5,511.90 feet to the point of beginning, **LESS AND EXCEPT** any portion of State Lease No. 18909; State Lease No. 12415, as amended; State Lease No. 10854, as amended; State Lease No. 1753, as amended; and Operating Agreement No. 195; the above described tract containing approximately **871 acres**, all as more particularly outlined on a plat on file in the Office of Mineral

Resources, Department of Natural Resources. All bearings, distances and coordinates are based on Louisiana Coordinate System of 1927, (North or South Zone), where applicable.

NOTE: The above description of the Tract nominated for lease has been provided and corrected, where required, exclusively by the nomination party. Any mineral lease selected from this Tract and awarded by the Louisiana State Mineral Board shall be without warranty of any kind, either express, implied, or statutory, including, but not limited to, the implied warranties of merchantability and fitness for a particular purpose. Should the mineral lease awarded by the Louisiana State Mineral Board be subsequently modified, cancelled or abrogated due to the existence of conflicting leases, operating agreements, private claims or other future obligations or conditions which may affect all or any portion of the leased Tract, it shall not relieve the Lessee of the obligation to pay any bonus due thereon to the Louisiana State Mineral Board, nor shall the Louisiana State Mineral Board be obligated to refund any consideration paid by the Lessor prior to such modification, cancellation, or abrogation, including, but not limited to, bonuses, rentals and royalties.

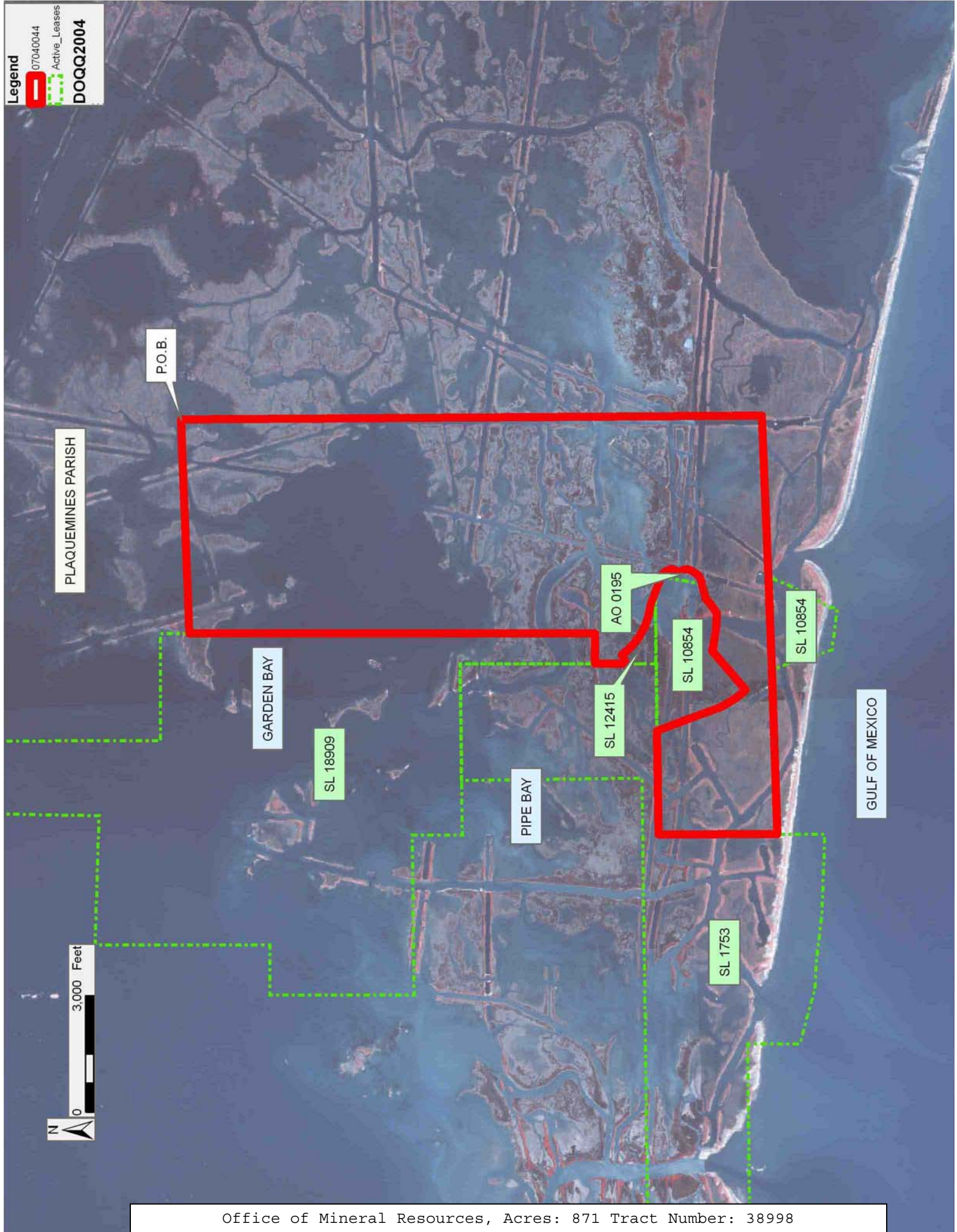
NOTE: The State of Louisiana does hereby reserve, and this lease shall be subject to, the imprescriptible right of surface use in the nature of a servitude in favor of the Department of Natural Resources, including its Offices and Commissions, for the sole purpose of implementing, constructing, servicing and maintaining approved coastal zone management and/or restoration projects. Utilization of any and all rights derived under this lease by the mineral lessee, its agents, successors or assigns, shall not interfere with nor hinder the reasonable surface use by the Department of Natural Resources, its Offices or Commissions, as herein above reserved.

NOTE: The Department of Wildlife and Fisheries has designated certain areas in the coastal waters of the State of Louisiana as Oyster Seed Bed Areas. The exact location of those Seed Bed Areas must be obtained from the Department of Wildlife and Fisheries and any work done under a mineral lease from the State of Louisiana may necessarily be conducted in conformity with the rules and regulations promulgated by the said Department of Wildlife and Fisheries for Oyster Seed Bed Areas.

Applicant: ACADIAN LAND SERVICES, LLC

Bidder	Cash Payment	Price/Acre	Rental	Oil	Gas	Other

Legend
07040044
Active_Leases
DOQQ2004



TRACT 38999 - Portion of Block 84, Main Pass Area, Revised, Plaquemines Parish, Louisiana

All of the lands now or formerly constituting the beds and bottoms of all water bodies of every nature and description the title of which vests in the State of Louisiana, together with all islands arising therein and other lands formed by accretion or by reliction, where allowed by law, excepting tax adjudicated lands, and not presently under mineral lease on April 11, 2007, situated in Plaquemines Parish, Louisiana, and more particularly described as follows: Beginning at a point on the East line of Block 84, Main Pass Area, Revised, also being a point on the North boundary of State Lease No. 18852 having Coordinates of X = 2,692,476.83 and Y = 244,681.36; thence along the boundary of said State Lease No. 18852 the following courses: South 74 degrees 08 minutes 27 seconds West 1,338.79 feet to its Northwest corner having Coordinates of X = 2,691,189.00 and Y = 244,315.50 and South 25 degrees 45 minutes 31 seconds East 1,239.13 feet to its Southwest corner, also being the Northwest corner of State Lease No. 18979 having Coordinates of X = 2,691,727.50 and Y = 243,199.50; thence South 35 degrees 31 minutes 34 seconds West 2,881.56 feet along the West boundary of said State Lease No. 18979 to its Westernmost Southwest corner, also being a point on the North boundary of a Proposed Operating Agreement having Coordinates of X = 2,690,053.10 and Y = 240,854.34; thence along the boundary of said Proposed Operating Agreement the following courses: West 1,072.45 feet to its Northwest corner having Coordinates of X = 2,688,980.65 and Y = 240,854.34 and South 1,854.34 feet to a point having Coordinates of X = 2,688,980.65 and Y = 239,000.00; thence West 2,080.65 feet to a point on the West line of said Block 84 having Coordinates of X = 2,686,900.00 and Y = 239,000.00; thence North 11,016.90 feet along the West line of said Block 84 to its Northwest corner having Coordinates of X = 2,686,900.00 and Y = 250,016.90; thence South 46 degrees 16 minutes 00 seconds East 7,718.10 feet along the East line of said Block 84 to the point of beginning, containing approximately **565 acres**, all as more particularly outlined on a plat on file in the Office of Mineral Resources, Department of Natural Resources. All bearings, distances and coordinates are based on Louisiana Coordinate System of 1927, (North or South Zone), where applicable.

NOTE: The above description of the Tract nominated for lease has been provided and corrected, where required, exclusively by the nomination party. Any mineral lease selected from this Tract and awarded by the Louisiana State Mineral Board shall be without warranty of any kind, either express, implied, or statutory, including, but not limited to, the implied warranties of merchantability and fitness for a particular purpose. Should the mineral lease awarded by the Louisiana State Mineral Board be subsequently modified, cancelled or abrogated due to the existence of conflicting leases, operating agreements, private claims or other future obligations or conditions which may affect all or any portion of the leased Tract, it shall not relieve the Lessee of the obligation to pay any bonus due thereon to the Louisiana State Mineral Board, nor shall the Louisiana State Mineral Board be obligated to refund any consideration

paid by the Lessor prior to such modification, cancellation, or abrogation, including, but not limited to, bonuses, rentals and royalties.

NOTE: The State of Louisiana does hereby reserve, and this lease shall be subject to, the imprescriptible right of surface use in the nature of a servitude in favor of the Department of Natural Resources, including its Offices and Commissions, for the sole purpose of implementing, constructing, servicing and maintaining approved coastal zone management and/or restoration projects. Utilization of any and all rights derived under this lease by the mineral lessee, its agents, successors or assigns, shall not interfere with nor hinder the reasonable surface use by the Department of Natural Resources, its Offices or Commissions, as herein above reserved.

NOTE: The Department of Wildlife and Fisheries has designated certain areas in the coastal waters of the State of Louisiana as Oyster Seed Bed Areas. The exact location of those Seed Bed Areas must be obtained from the Department of Wildlife and Fisheries and any work done under a mineral lease from the State of Louisiana may necessarily be conducted in conformity with the rules and regulations promulgated by the said Department of Wildlife and Fisheries for Oyster Seed Bed Areas.

Applicant: MINERAL SERVICES, INC.

Bidder	Cash Payment	Price/Acre	Rental	Oil	Gas	Other

Legend
07040046
Active_Leases
DOQQ2004

GULF OF MEXICO

PLAQUEMINES PARISH

MAIN PASS AREA, REVISED

P.O.B.

SL 18852

SL 18979

MISSISSIPPI RIVER



TRACT 39000 - Portion of Block 84, Main Pass Area, Revised, Plaquemines Parish, Louisiana

All of the lands now or formerly constituting the beds and bottoms of all water bodies of every nature and description the title of which vests in the State of Louisiana, together with all islands arising therein and other lands formed by accretion or by reliction, where allowed by law, excepting tax adjudicated lands, and not presently under mineral lease on April 11, 2007, situated in Plaquemines Parish, Louisiana, and more particularly described as follows: Beginning at a point on the Eastern boundary of State Lease No. 18979, also being a point on the East line of Block 84, Main Pass Area, Revised, having Coordinates of X = 2,694,583.67 and Y = 242,665.67; thence South 46 degrees 16 minutes 00 seconds East 1,487.71 feet along the East line of said Block 84 to a point on the Louisiana Coastline, as decreed by the Supreme Court of the United States, as determined by a Special Master appointed therein, in litigation styled *United States v. State of Louisiana et al No. 9 Original*, in 1975, having Coordinates of X = 2,695,658.63 and Y = 241,637.21; thence Southeasterly on a straight line, along said Louisiana Coastline, to a point having Coordinates of X = 2,699,269.52 and Y = 236,660.00; thence West 9,319.52 feet to a point having Coordinates of X = 2,689,950.00 and Y = 236,660.00; thence North 1,194.34 feet to a point on the South boundary of a Proposed Operating Agreement having Coordinates of X = 2,689,950.00 and Y = 237,854.34; thence along the boundary of said Proposed Operating Agreement the following courses: East 1,030.65 feet to its Southeast corner having Coordinates of X = 2,690,980.65 and Y = 237,854.34 and North 1,297.45 feet to the Southernmost Southwest corner of said State Lease No. 18979 having Coordinates of X = 2,690,980.65 and Y = 239,151.79; thence along the boundary of said State Lease No. 18979 the following courses: North 61 degrees 48 minutes 28 seconds East 3,890.95 feet to a point having Coordinates of X = 2,694,410.00 and Y = 240,990.00 and North 05 degrees 55 minutes 02 seconds East 1,684.65 feet to the point of beginning, containing approximately **614 acres**, all as more particularly outlined on a plat on file in the Office of Mineral Resources, Department of Natural Resources. All bearings, distances and coordinates are based on Louisiana Coordinate System of 1927, (North or South Zone), where applicable.

NOTE: The above description of the Tract nominated for lease has been provided and corrected, where required, exclusively by the nomination party. Any mineral lease selected from this Tract and awarded by the Louisiana State Mineral Board shall be without warranty of any kind, either express, implied, or statutory, including, but not limited to, the implied warranties of merchantability and fitness for a particular purpose. Should the mineral lease awarded by the Louisiana State Mineral Board be subsequently modified, cancelled or abrogated due to the existence of conflicting leases, operating agreements, private claims or other future obligations or conditions which may affect all or any portion of the leased Tract, it shall not relieve the Lessee of the obligation to pay any bonus due thereon to the Louisiana State Mineral Board, nor shall the Louisiana State Mineral Board be obligated to refund any consideration

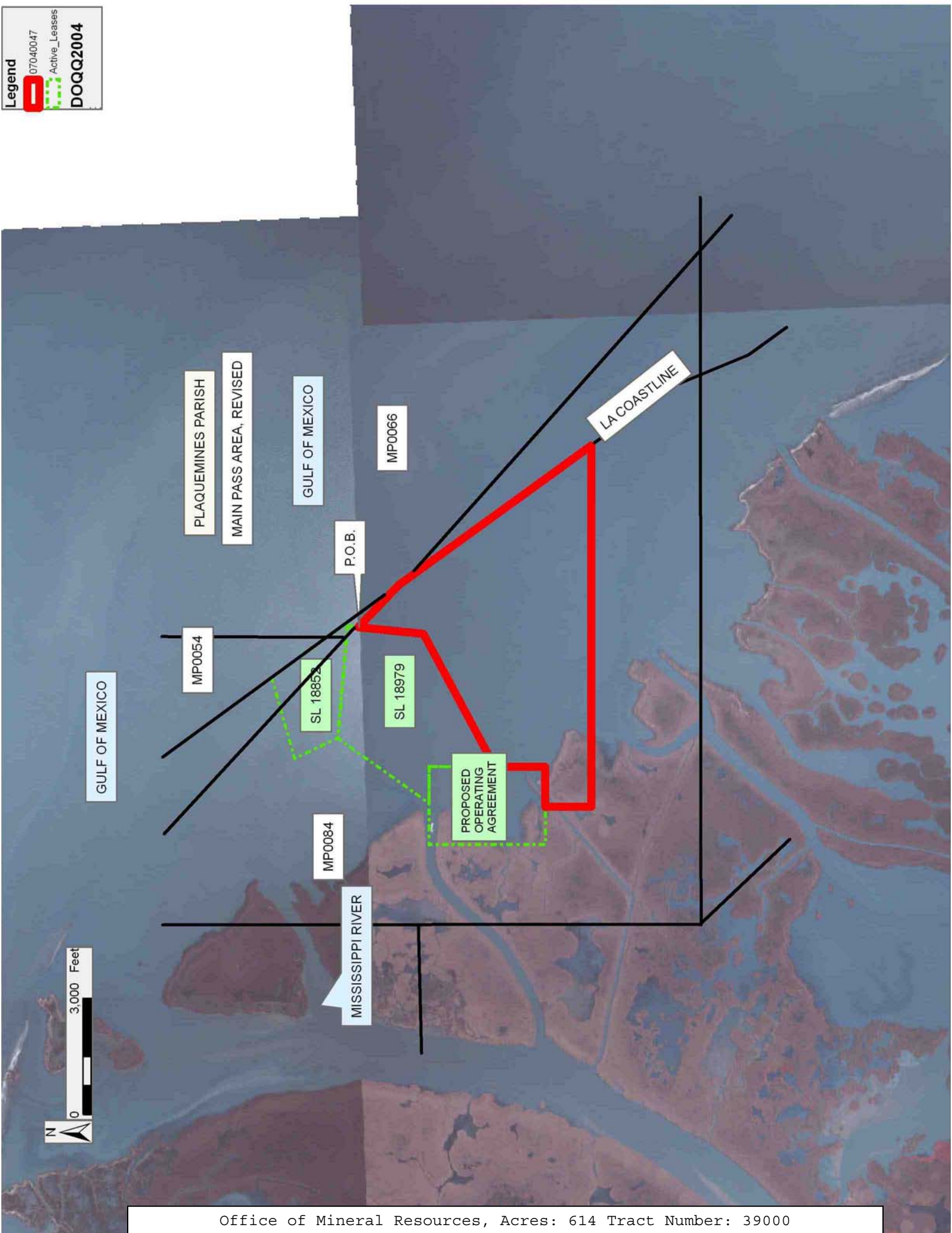
paid by the Lessor prior to such modification, cancellation, or abrogation, including, but not limited to, bonuses, rentals and royalties.

NOTE: The State of Louisiana does hereby reserve, and this lease shall be subject to, the imprescriptible right of surface use in the nature of a servitude in favor of the Department of Natural Resources, including its Offices and Commissions, for the sole purpose of implementing, constructing, servicing and maintaining approved coastal zone management and/or restoration projects. Utilization of any and all rights derived under this lease by the mineral lessee, its agents, successors or assigns, shall not interfere with nor hinder the reasonable surface use by the Department of Natural Resources, its Offices or Commissions, as herein above reserved.

NOTE: The Department of Wildlife and Fisheries has designated certain areas in the coastal waters of the State of Louisiana as Oyster Seed Bed Areas. The exact location of those Seed Bed Areas must be obtained from the Department of Wildlife and Fisheries and any work done under a mineral lease from the State of Louisiana may necessarily be conducted in conformity with the rules and regulations promulgated by the said Department of Wildlife and Fisheries for Oyster Seed Bed Areas.

Applicant: MINERAL SERVICES, INC.

Bidder	Cash Payment	Price/Acre	Rental	Oil	Gas	Other



TRACT 39001 - Portion of Blocks 83, and 84, Main Pass Area, Revised, Plaquemines Parish, Louisiana

All of the lands now or formerly constituting the beds and bottoms of all water bodies of every nature and description the title of which vests in the State of Louisiana, together with all islands arising therein and other lands formed by accretion or by reliction, where allowed by law, excepting tax adjudicated lands, and not presently under mineral lease on April 11, 2007, situated in Plaquemines Parish, Louisiana, and more particularly described as follows: Beginning at a point within Block 84, Main Pass Area, Revised, having Coordinates of X = 2,695,561.89 and Y = 236,660.00; thence South 22 degrees 43 minutes 14 seconds East 5,756.72 feet to a point within Block 83, Main Pass Area, Revised, having Coordinates of X = 2,697,785.35 and Y = 231,350.00; thence West 2,085.35 feet to a point within said Block 83 having Coordinates of X = 2,695,700.00 and Y = 231,350.00; thence North 47 degrees 16 minutes 42 seconds West 7,826.79 feet to a point within said Block 84 having Coordinates of X = 2,689,950.00 and Y = 236,660.00; thence East 5,611.89 feet to the point of beginning, containing approximately **330 acres**, all as more particularly outlined on a plat on file in the Office of Mineral Resources, Department of Natural Resources. All bearings, distances and coordinates are based on Louisiana Coordinate System of 1927, (North or South Zone), where applicable.

NOTE: The above description of the Tract nominated for lease has been provided and corrected, where required, exclusively by the nomination party. Any mineral lease selected from this Tract and awarded by the Louisiana State Mineral Board shall be without warranty of any kind, either express, implied, or statutory, including, but not limited to, the implied warranties of merchantability and fitness for a particular purpose. Should the mineral lease awarded by the Louisiana State Mineral Board be subsequently modified, cancelled or abrogated due to the existence of conflicting leases, operating agreements, private claims or other future obligations or conditions which may affect all or any portion of the leased Tract, it shall not relieve the Lessee of the obligation to pay any bonus due thereon to the Louisiana State Mineral Board, nor shall the Louisiana State Mineral Board be obligated to refund any consideration paid by the Lessor prior to such modification, cancellation, or abrogation, including, but not limited to, bonuses, rentals and royalties.

NOTE: The State of Louisiana does hereby reserve, and this lease shall be subject to, the imprescriptible right of surface use in the nature of a servitude in favor of the Department of Natural Resources, including its Offices and Commissions, for the sole purpose of implementing, constructing, servicing and maintaining approved coastal zone management and/or restoration projects. Utilization of any and all rights derived under this lease by the mineral lessee, its agents, successors or assigns, shall not interfere with nor hinder the reasonable surface use by the Department of Natural Resources, its Offices or Commissions, as herein above reserved.

NOTE: The Department of Wildlife and Fisheries has designated certain areas in the coastal waters of the State of Louisiana as Oyster Seed Bed Areas. The exact location of those Seed Bed Areas must be obtained from the Department of Wildlife and Fisheries and any work done under a mineral lease from the State of Louisiana may necessarily be conducted in conformity with the rules and regulations promulgated by the said Department of Wildlife and Fisheries for Oyster Seed Bed Areas.

Applicant: MINERAL SERVICES, INC.

Bidder	Cash Payment	Price/Acre	Rental	Oil	Gas	Other

PLAQUEMINES PARISH

GULF OF MEXICO

MAIN PASS AREA, REVISED

P.O.B.

GASPER BAYOU

GASPER OUTSIDE POND

SL 335

