

**TRACT 38982 - St. Mary Parish, Louisiana**

All of the lands now or formerly constituting the beds and bottoms of all water bodies of every nature and description the title of which vests in the State of Louisiana, together with all islands arising therein and other lands formed by accretion or by reliction, where allowed by law, excepting tax adjudicated lands, and not presently under mineral lease on April 11, 2007, situated in St. Mary Parish, Louisiana, and more particularly described as follows: Beginning at a point having Coordinates of X = 2,053,900.00 and Y = 349,250.00; thence South 00 degrees 32 minutes 08 seconds East 5,350.23 feet to a point having Coordinates of X = 2,053,950.00 and Y = 343,900.00; thence South 88 degrees 58 minutes 37 seconds West approximately 5,028 feet to a point on the East boundary of State Lease No. 341, as amended; thence Northerly approximately 5,351 feet along the East boundary of said State Lease No. 341 to a point; thence, leaving said State Lease No. 341, North 88 degrees 59 minutes 09 seconds East approximately 5,060 feet to the point of beginning, **LESS AND EXCEPT** that portion, if any, of State Lease No. 341, as amended, which may lie within the above described tract, containing approximately **42 acres**, all as more particularly outlined on a plat on file in the Office of Mineral Resources, Department of Natural Resources. All bearings, distances and coordinates are based on Louisiana Coordinate System of 1927, (North or South Zone), where applicable.

NOTE: The above description of the Tract nominated for lease has been provided and corrected, where required, exclusively by the nomination party. Any mineral lease selected from this Tract and awarded by the Louisiana State Mineral Board shall be without warranty of any kind, either express, implied, or statutory, including, but not limited to, the implied warranties of merchantability and fitness for a particular purpose. Should the mineral lease awarded by the Louisiana State Mineral Board be subsequently modified, cancelled or abrogated due to the existence of conflicting leases, operating agreements, private claims or other future obligations or conditions which may affect all or any portion of the leased Tract, it shall not relieve the Lessee of the obligation to pay any bonus due thereon to the Louisiana State Mineral Board, nor shall the Louisiana State Mineral Board be obligated to refund any consideration paid by the Lessor prior to such modification, cancellation, or abrogation, including, but not limited to, bonuses, rentals and royalties.

NOTE: The State of Louisiana does hereby reserve, and this lease shall be subject to, the imprescriptible right of surface use in the nature of a servitude in favor of the Department of Natural Resources, including its Offices and Commissions, for the sole purpose of implementing, constructing, servicing and maintaining approved coastal zone management and/or restoration projects. Utilization of any and all rights derived under this lease by the mineral lessee, its agents, successors or assigns, shall not interfere with nor hinder the reasonable surface use by the Department of Natural Resources, its Offices or Commissions, as herein above reserved.

Applicant: GHJ LAND SERVICES L.L.C.

Bidder	Cash Payment	Price/ Acre	Rental	Oil	Gas	Other



Office of Mineral Resources, Acres: 42 Tract Number: 38982

**TRACT 38983 - St. Mary and Terrebonne Parishes, Louisiana**

All of the lands now or formerly constituting the beds and bottoms of all water bodies of every nature and description the title of which vests in the State of Louisiana, together with all islands arising therein and other lands formed by accretion or by reliction, where allowed by law, excepting tax adjudicated lands, and not presently under mineral lease on April 11, 2007, situated in St. Mary and Terrebonne Parishes, Louisiana, and more particularly described as follows: Beginning at a point having Coordinates of X = 2,053,950.00 and Y = 343,900.00; thence South 02 degrees 07 minutes 16 seconds East 2,701.85 feet to a point having a Coordinates of X = 2,054,050.00 and Y = 341,200.00; thence South 89 degrees 13 minutes 58 seconds West approximately 5,087 feet to a point on the East boundary of State Lease No. 341, as amended; thence Northerly approximately 2,679 feet along the East boundary of said State Lease No. 341 to a point; thence, leaving said State Lease No. 341, North 88 degrees 58 minutes 37 seconds East approximately 5,028 feet to the point of beginning, **LESS AND EXCEPT** that portion, if any, of State Lease No. 341, as amended, which may lie within the above described tract, containing approximately **43 acres**, all as more particularly outlined on a plat on file in the Office of Mineral Resources, Department of Natural Resources. All bearings, distances and coordinates are based on Louisiana Coordinate System of 1927, (North or South Zone), where applicable.

NOTE: The above description of the Tract nominated for lease has been provided and corrected, where required, exclusively by the nomination party. Any mineral lease selected from this Tract and awarded by the Louisiana State Mineral Board shall be without warranty of any kind, either express, implied, or statutory, including, but not limited to, the implied warranties of merchantability and fitness for a particular purpose. Should the mineral lease awarded by the Louisiana State Mineral Board be subsequently modified, cancelled or abrogated due to the existence of conflicting leases, operating agreements, private claims or other future obligations or conditions which may affect all or any portion of the leased Tract, it shall not relieve the Lessee of the obligation to pay any bonus due thereon to the Louisiana State Mineral Board, nor shall the Louisiana State Mineral Board be obligated to refund any consideration paid by the Lessor prior to such modification, cancellation, or abrogation, including, but not limited to, bonuses, rentals and royalties.

NOTE: The State of Louisiana does hereby reserve, and this lease shall be subject to, the imprescriptible right of surface use in the nature of a servitude in favor of the Department of Natural Resources, including its Offices and Commissions, for the sole purpose of implementing, constructing, servicing and maintaining approved coastal zone management and/or restoration projects. Utilization of any and all rights derived under this lease by the mineral lessee, its agents, successors or assigns, shall not interfere with nor hinder the reasonable surface use by the Department of Natural Resources, its Offices or Commissions, as herein above reserved.

NOTE: The above Tract is located upon a restricted scenic river and all operations in this area must be conducted in strict conformity with the regulations of the Corps of Engineers, U.S. Army.

Applicant: GHJ LAND SERVICES, L.L.C.

Bidder	Cash Payment	Price/ Acre	Rental	Oil	Gas	Other

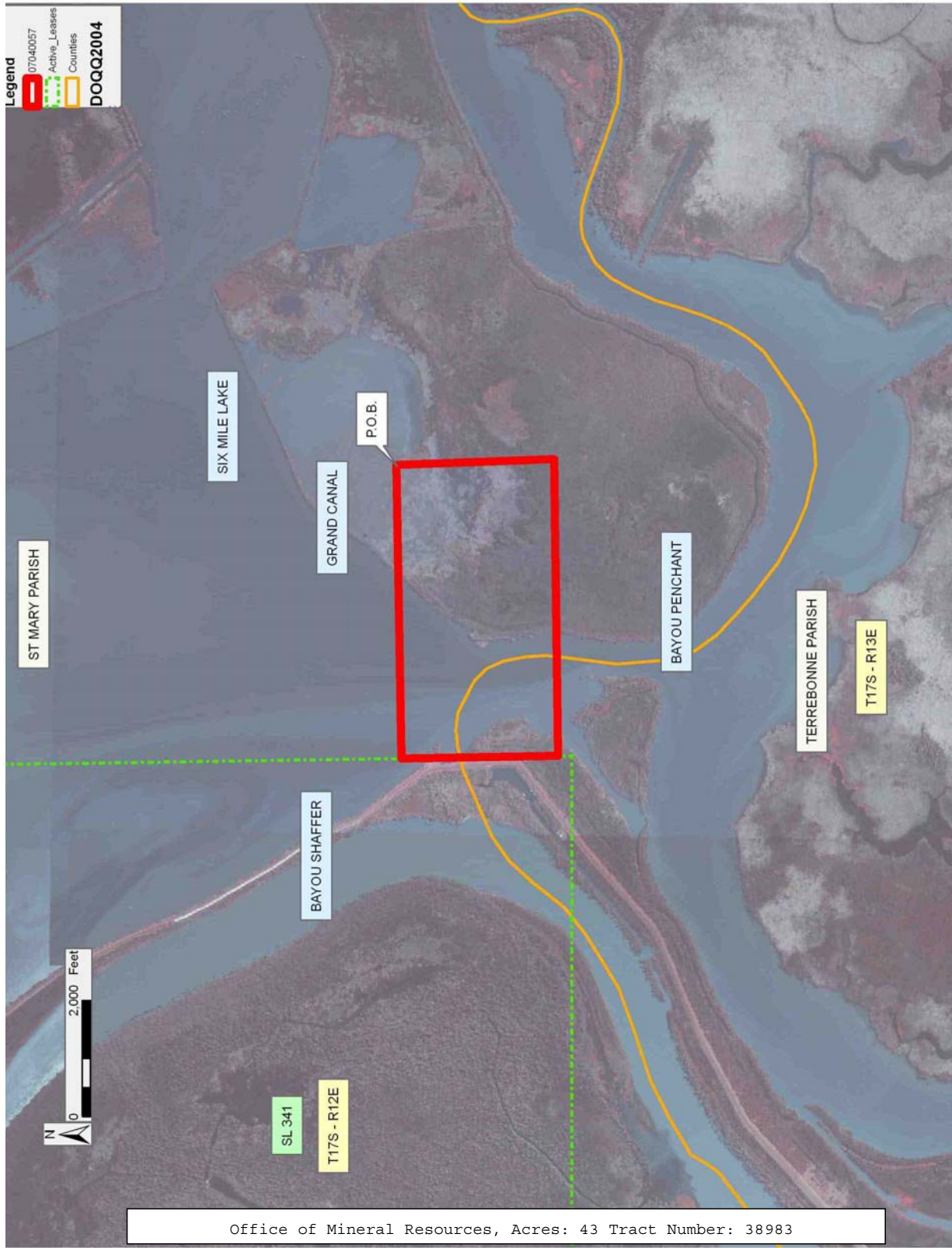
Legend

07040057

Active\_Leases

Counties

DOQQ2004



Office of Mineral Resources, Acres: 43 Tract Number: 38983

**TRACT 38984 - Lafourche Parish, Louisiana**

All of the lands now or formerly constituting the beds and bottoms of all water bodies of every nature and description the title of which vests in the State of Louisiana, together with all islands arising therein and other lands formed by accretion or by reliction, where allowed by law, excepting tax adjudicated lands, and not presently under mineral lease on April 11, 2007, situated in Lafourche Parish, Louisiana, and more particularly described as follows: Beginning at a point having Coordinates of X = 2,253,700.00 and Y = 337,206.83; thence West 8,730.33 feet to the southeastern point of State Lease No. 9637, as amended having Coordinates of X = 2,244,969.67 and Y = 337,206.83; thence along the boundary of said State Lease No. 9637 as follows: North 16 degrees 17 minutes 59 seconds West 301.97 feet, North 09 degrees 23 minutes 29 seconds West 464.71 feet, North 02 degrees 28 minutes 05 seconds West 445.42 feet, North 06 degrees 20 minutes 55 seconds East 400.54 feet, North 10 degrees 09 minutes 28 seconds East 493.25 feet and North 04 degrees 00 minutes 28 seconds East 282.10 feet to a point having Coordinates of X = 2,244,940.90 and Y = 339,565.16; thence East 8,759.10 feet to a point having Coordinates of X = 2,253,700.00 and Y = 339,565.16; thence South 2,358.33 feet to the Point of Beginning, containing approximately **200 acres**, all as more particularly outlined on a plat on file in the Office of Mineral Resources, Department of Natural Resources. All bearings, distances and coordinates are based on Louisiana Coordinate System of 1927, (North or South Zone), where applicable.

NOTE: The above description of the Tract nominated for lease has been provided and corrected, where required, exclusively by the nomination party. Any mineral lease selected from this Tract and awarded by the Louisiana State Mineral Board shall be without warranty of any kind, either express, implied, or statutory, including, but not limited to, the implied warranties of merchantability and fitness for a particular purpose. Should the mineral lease awarded by the Louisiana State Mineral Board be subsequently modified, cancelled or abrogated due to the existence of conflicting leases, operating agreements, private claims or other future obligations or conditions which may affect all or any portion of the leased Tract, it shall not relieve the Lessee of the obligation to pay any bonus due thereon to the Louisiana State Mineral Board, nor shall the Louisiana State Mineral Board be obligated to refund any consideration paid by the Lessor prior to such modification, cancellation, or abrogation, including, but not limited to, bonuses, rentals and royalties.

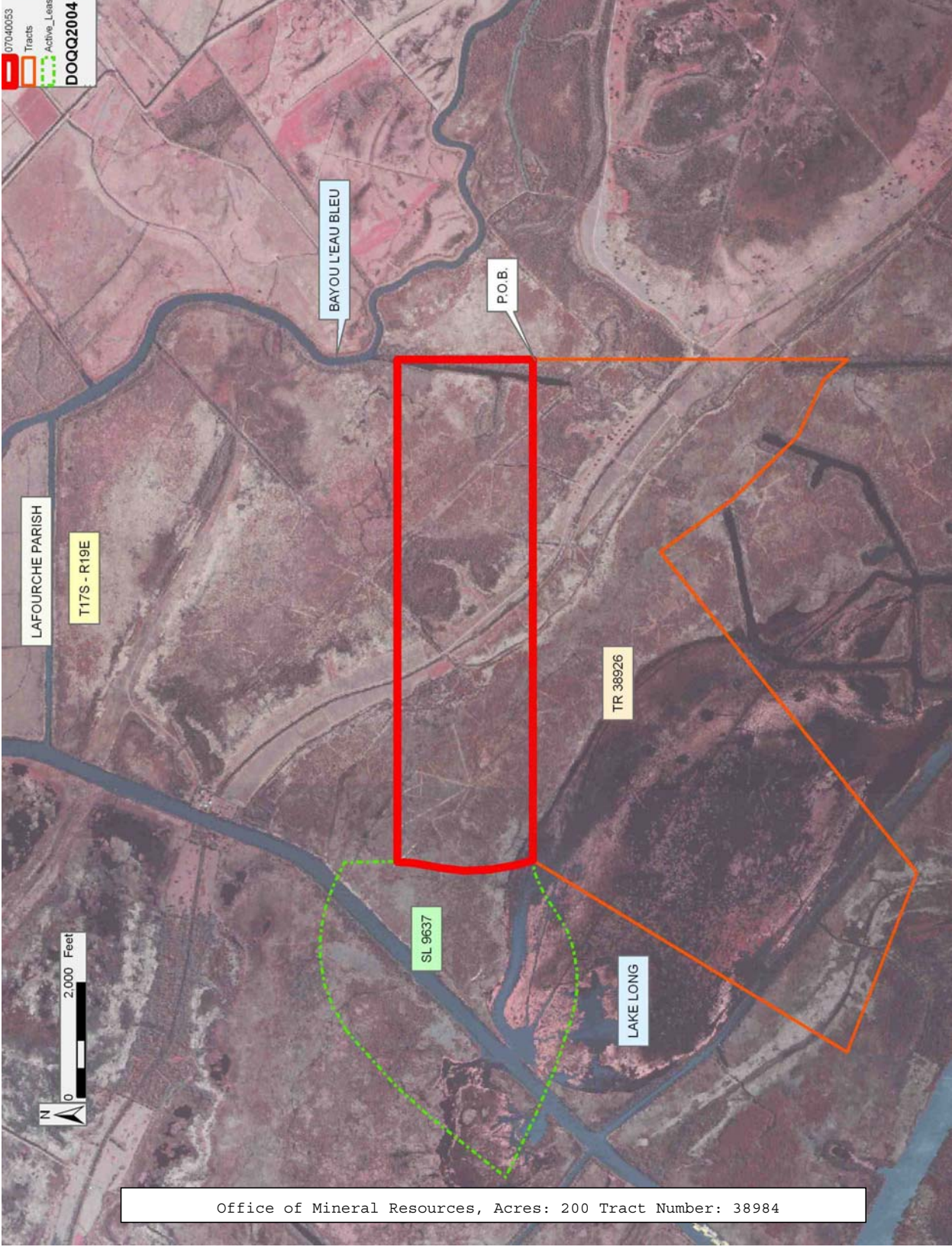
NOTE: The State of Louisiana does hereby reserve, and this lease shall be subject to, the imprescriptible right of surface use in the nature of a servitude in favor of the Department of Natural Resources, including its Offices and Commissions, for the sole purpose of implementing, constructing, servicing and maintaining approved coastal zone management and/or restoration projects. Utilization of any and all rights derived under this lease by the mineral lessee, its agents, successors or assigns, shall not interfere with nor hinder the reasonable surface use by the

Department of Natural Resources, its Offices or Commissions, as herein above reserved.

Applicant: ALJ ENERGY

Bidder	Cash Payment	Price/ Acre	Rental	Oil	Gas	Other





Office of Mineral Resources, Acres: 200 Tract Number: 38984

**TRACT 38985 - Lafourche and Terrebonne Parishes, Louisiana**

All of the lands now or formerly constituting the beds and bottoms of all water bodies of every nature and description the title of which vests in the State of Louisiana, together with all islands arising therein and other lands formed by accretion or by reliction, where allowed by law, excepting tax adjudicated lands, and not presently under mineral lease on April 11, 2007, situated in Lafourche and Terrebonne Parishes, Louisiana, and more particularly described as follows: Beginning at the Northeast corner of State Lease No. 18662 having Coordinates of X = 2,235,900.00 and Y = 331,611.48; thence West 403.89 feet along the North line of said State Lease No. 18662 to a point having Coordinates of X = 2,235,496.11 and Y = 331,611.48; thence North 5,136.37 feet to a point having Coordinates of X = 2,235,496.11 and Y = 336,747.85; thence Easterly to a point on the western meander line of Lake Long; thence continue Easterly and Northerly along the boundary of that portion of Lake Long, being the extreme northwest portion of Lake Long, that the state does not have an interest in to a point of intersection with a Coordinate of Y = 339,565.16; thence East approximately 1,936 feet to a point of intersection with the west boundary of State Lease No. 9637, as amended having Coordinates of X = 2,241,006.59 and Y = 339,565.16; thence along the boundary of said State Lease No. 9637 the following: South 42 degrees 11 minutes 07 seconds West 796.53 feet, South 38 degrees 30 minutes 36 seconds West 1,653.92 feet to a point having Coordinates of X = 2,239,441.89 and Y = 337,680.76, South 63 degrees 19 minutes 43 seconds East 378.50 feet, South 64 degrees 55 minutes 46 seconds East 762.67 feet, South 67 degrees 03 minutes 46 seconds East 970.67 feet, South 72 degrees 07 minutes 43 seconds East 1,016.91 feet, South 81 degrees 25 minutes 43 seconds East 360.17 feet, South 89 degrees 51 minutes 23 seconds East 379.17 feet, North 81 degrees 38 minutes 15 seconds East 334.23 feet, North 71 degrees 18 minutes 11 seconds East 329.01 feet, North 60 degrees 41 minutes 12 seconds East 370.93 feet, North 56 degrees 20 minutes 00 seconds East 453.95 feet, North 66 degrees 51 minutes 22 seconds East 363.02 feet and North 81 degrees 20 minutes 59 seconds East 226.86 feet having Coordinates of X = 2,244,969.67 and Y = 337,206.83; thence South 31 degrees 26 minutes 17 seconds West approximately 6,417 feet to a point on the southwestern meander line of Lake Long; thence Southeasterly 3,360 feet, more or less, on and along said southwestern meander line of Lake Long to a point being the most Western corner of State Lease No. 328, as amended; thence continue Southeasterly along said meander line and the southwest boundary of said State Lease No. 328 to its Southeast corner and a point having a Coordinate of X = 2,253,700.00; thence South approximately 184 feet to a point having Coordinates of X = 2,253,700.00 and Y = 326,100.00; thence West 7,600.00 feet to a point having Coordinates of X = 2,246,100.00 and Y = 326,100.00; thence South 5,014.84 feet to a point having Coordinates of X = 2,246,100.00 and Y = 321,085.16; thence West 10,603.89 feet to a point having Coordinates of X = 2,235,496.11 and Y = 321,085.16; thence North 5,126.32 feet to a point on the South line of said State Lease No. 18662 having Coordinates of X = 2,235,496.11 and Y = 326,211.48; thence along the boundary of said State Lease No. 18662 the following: East 403.89 feet

to a point having Coordinates of X = 2,235,900.00 and Y = 326,211.48 and North 5,400.00 feet to the Point of Beginning, **LESS AND EXCEPT** any and all portion of said State Lease No. 328 that may lie within the above described tract, **ALSO LESS AND EXCEPT** any state owned land that may lie within the above described tract, containing approximately **442 acres**, all as more particularly outlined on a plat on file in the Office of Mineral Resources, Department of Natural Resources. All bearings, distances and coordinates are based on Louisiana Coordinate System of 1927, (North or South Zone), where applicable.

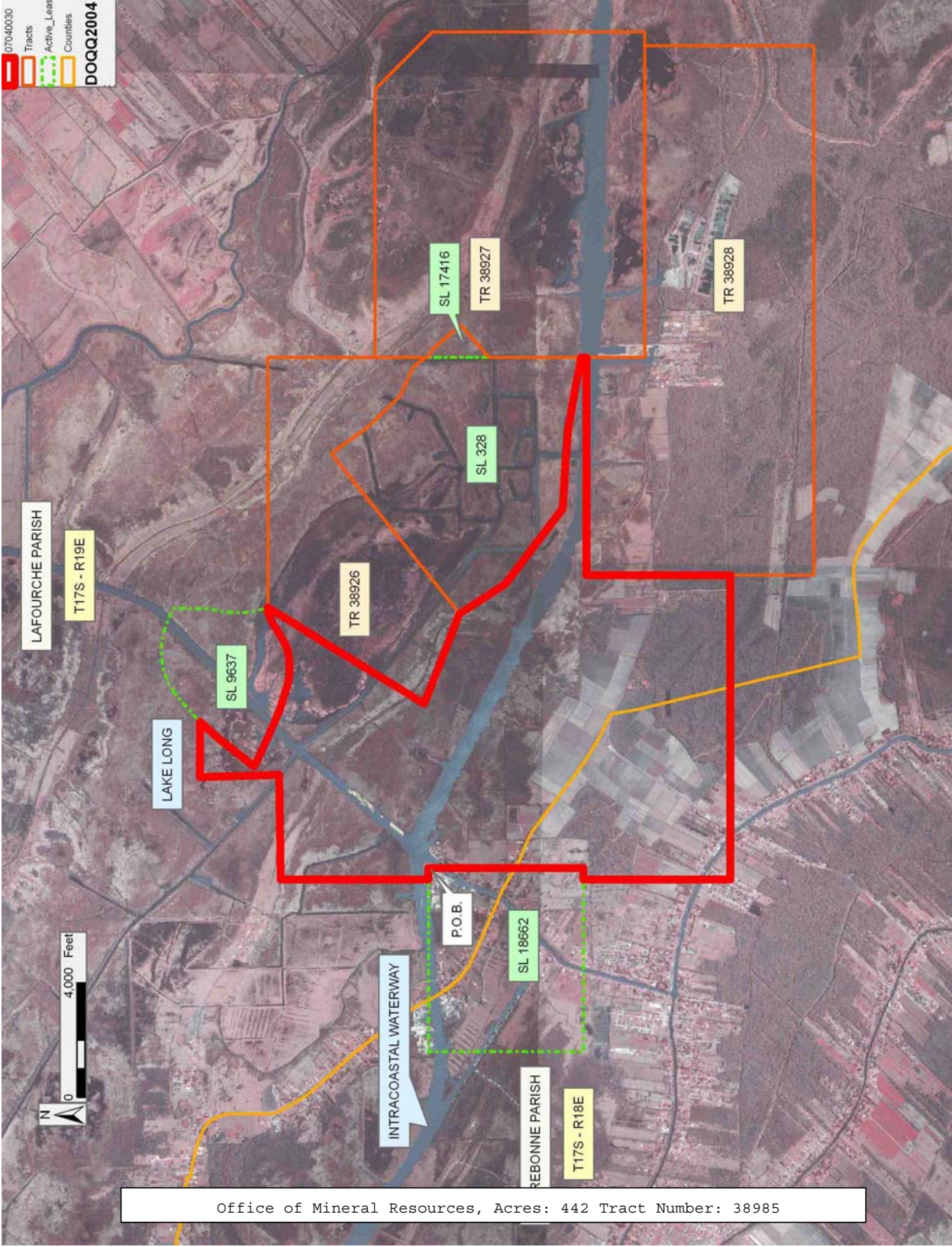
NOTE: The above description of the Tract nominated for lease has been provided and corrected, where required, exclusively by the nomination party. Any mineral lease selected from this Tract and awarded by the Louisiana State Mineral Board shall be without warranty of any kind, either express, implied, or statutory, including, but not limited to, the implied warranties of merchantability and fitness for a particular purpose. Should the mineral lease awarded by the Louisiana State Mineral Board be subsequently modified, cancelled or abrogated due to the existence of conflicting leases, operating agreements, private claims or other future obligations or conditions which may affect all or any portion of the leased Tract, it shall not relieve the Lessee of the obligation to pay any bonus due thereon to the Louisiana State Mineral Board, nor shall the Louisiana State Mineral Board be obligated to refund any consideration paid by the Lessor prior to such modification, cancellation, or abrogation, including, but not limited to, bonuses, rentals and royalties.

NOTE: The State of Louisiana does hereby reserve, and this lease shall be subject to, the imprescriptible right of surface use in the nature of a servitude in favor of the Department of Natural Resources, including its Offices and Commissions, for the sole purpose of implementing, constructing, servicing and maintaining approved coastal zone management and/or restoration projects. Utilization of any and all rights derived under this lease by the mineral lessee, its agents, successors or assigns, shall not interfere with nor hinder the reasonable surface use by the Department of Natural Resources, its Offices or Commissions, as herein above reserved.

Bidder	Cash Payment	Price/ Acre	Rental	Oil	Gas	Other

Applicant: ALJ ENERGY





**TRACT 38986 - St. Mary and Terrebonne Parishes, Louisiana**

All of the lands now or formerly constituting the beds and bottoms of all water bodies of every nature and description the title of which vests in the State of Louisiana, together with all islands arising therein and other lands formed by accretion or by reliction, where allowed by law, excepting tax adjudicated lands, and not presently under mineral lease on April 11, 2007, situated in St. Mary and Terrebonne Parishes, Louisiana, and more particularly described as follows: Beginning at a point having Coordinates of X = 2,048,550.00 and Y = 338,450.00; thence South 89 degrees 27 minutes 52 seconds West 5,350.23 feet to a point having a Coordinates of X = 2,043,200.00 and Y = 338,400.00; thence North 02 degrees 08 minutes 27 seconds West approximately 2,495 feet to a point on the South boundary of State Lease No. 341, as amended; thence Easterly approximately 5,861 feet along the South boundary of said State Lease No. 341 to its Southeast corner; thence Northerly approximately 234 feet along the East boundary of said State Lease No. 341 to a point; thence, leaving said State Lease No. 341, North 89 degrees 13 minutes 58 seconds East approximately 5,087 feet to a point having a Coordinates of X = 2,054,050.00 and Y = 341,200.00; thence South 02 degrees 07 minutes 16 seconds East 2,701.85 feet to a point having Coordinates of X = 2,054,150.00 and Y = 338,500.00; thence South 89 degrees 29 minutes 18 seconds West 5,600.22 feet to the point of beginning, **LESS AND EXCEPT** that portion, if any, of State Lease No. 341, as amended, which may lie within the above described tract, containing approximately **116 acres**, all as more particularly outlined on a plat on file in the Office of Mineral Resources, Department of Natural Resources. All bearings, distances and coordinates are based on Louisiana Coordinate System of 1927, (North or South Zone), where applicable.

NOTE: The above description of the Tract nominated for lease has been provided and corrected, where required, exclusively by the nomination party. Any mineral lease selected from this Tract and awarded by the Louisiana State Mineral Board shall be without warranty of any kind, either express, implied, or statutory, including, but not limited to, the implied warranties of merchantability and fitness for a particular purpose. Should the mineral lease awarded by the Louisiana State Mineral Board be subsequently modified, cancelled or abrogated due to the existence of conflicting leases, operating agreements, private claims or other future obligations or conditions which may affect all or any portion of the leased Tract, it shall not relieve the Lessee of the obligation to pay any bonus due thereon to the Louisiana State Mineral Board, nor shall the Louisiana State Mineral Board be obligated to refund any consideration paid by the Lessor prior to such modification, cancellation, or abrogation, including, but not limited to, bonuses, rentals and royalties.

NOTE: The State of Louisiana does hereby reserve, and this lease shall be subject to, the imprescriptible right of surface use in the nature of a servitude in favor of the Department of Natural Resources, including its Offices and Commissions, for the sole purpose of implementing,

constructing, servicing and maintaining approved coastal zone management and/or restoration projects. Utilization of any and all rights derived under this lease by the mineral lessee, its agents, successors or assigns, shall not interfere with nor hinder the reasonable surface use by the Department of Natural Resources, its Offices or Commissions, as herein above reserved.

NOTE: The above Tract is located upon a restricted scenic river and all operations in this area must be conducted in strict conformity with the regulations of the Corps of Engineers, U.S. Army.

Applicant: GHJ LAND SERVICES, L.L.C.

Bidder	Cash Payment	Price/ Acre	Rental	Oil	Gas	Other



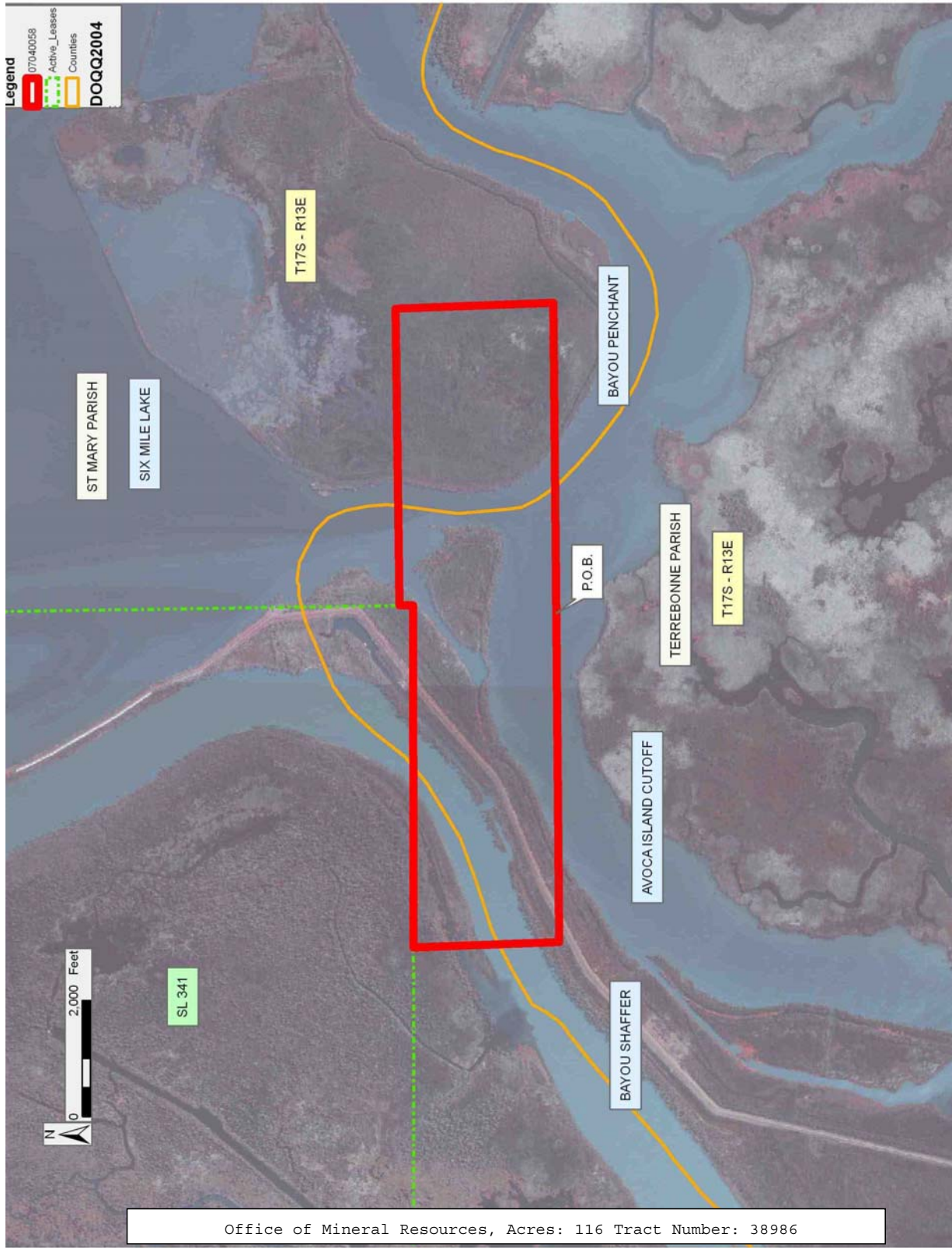
Legend

07040058

Active Leases

Courties

DOQQ2004



Office of Mineral Resources, Acres: 116 Tract Number: 38986



**TRACT 38987 - St. Mary and Terrebonne Parishes, Louisiana**

All of the lands now or formerly constituting the beds and bottoms of all water bodies of every nature and description the title of which vests in the State of Louisiana, together with all islands arising therein and other lands formed by accretion or by reliction, where allowed by law, excepting tax adjudicated lands, and not presently under mineral lease on April 11, 2007, situated in St. Mary and Terrebonne Parishes, Louisiana, and more particularly described as follows: Beginning at a point having Coordinates of X = 2,048,550.00 and Y = 338,450.00; thence North 89 degrees 29 minutes 18 seconds East 5,600.22 feet to a point having a Coordinates of X = 2,054,150.00 and Y = 338,500.00; thence North 88 degrees 55 minutes 45 seconds East 5,350.93 feet to a point having a Coordinates of X = 2,059,500.00 and Y = 338,600.00; thence South 01 degrees 38 minutes 12 seconds East 2,626.07 feet to a point having Coordinates of X = 2,059,575.00 and Y = 335,975.00; thence South 88 degrees 56 minutes 03 seconds West 5,375.93 feet to a point having Coordinates of X = 2,054,200.00 and Y = 335,875.00; thence South 89 degrees 13 minutes 33 seconds West 5,550.51 feet to a point having Coordinates of X = 2,048,650.00 and Y = 335,800.00; thence North 02 degrees 09 minutes 40 seconds West 2,651.89 feet to the point of beginning, containing approximately **197 acres**, all as more particularly outlined on a plat on file in the Office of Mineral Resources, Department of Natural Resources. All bearings, distances and coordinates are based on Louisiana Coordinate System of 1927, (North or South Zone), where applicable.

NOTE: The above description of the Tract nominated for lease has been provided and corrected, where required, exclusively by the nomination party. Any mineral lease selected from this Tract and awarded by the Louisiana State Mineral Board shall be without warranty of any kind, either express, implied, or statutory, including, but not limited to, the implied warranties of merchantability and fitness for a particular purpose. Should the mineral lease awarded by the Louisiana State Mineral Board be subsequently modified, cancelled or abrogated due to the existence of conflicting leases, operating agreements, private claims or other future obligations or conditions which may affect all or any portion of the leased Tract, it shall not relieve the Lessee of the obligation to pay any bonus due thereon to the Louisiana State Mineral Board, nor shall the Louisiana State Mineral Board be obligated to refund any consideration paid by the Lessor prior to such modification, cancellation, or abrogation, including, but not limited to, bonuses, rentals and royalties.

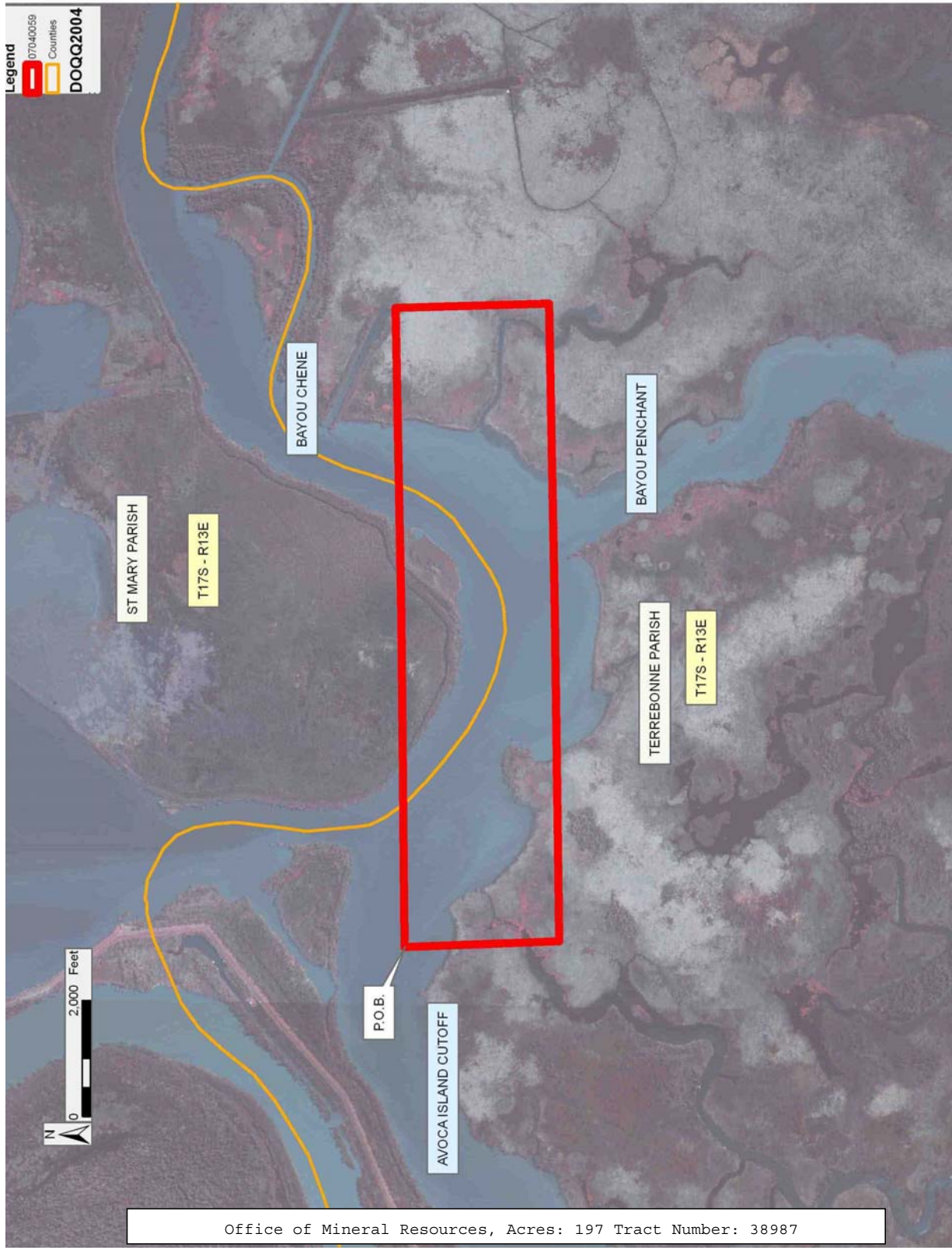
NOTE: The State of Louisiana does hereby reserve, and this lease shall be subject to, the imprescriptible right of surface use in the nature of a servitude in favor of the Department of Natural Resources, including its Offices and Commissions, for the sole purpose of implementing, constructing, servicing and maintaining approved coastal zone management and/or restoration projects. Utilization of any and all rights derived under this lease by the mineral lessee, its agents, successors or assigns,

shall not interfere with nor hinder the reasonable surface use by the Department of Natural Resources, its Offices or Commissions, as herein above reserved.

NOTE: The above Tract is located upon a restricted scenic river and all operations in this area must be conducted in strict conformity with the regulations of the Corps of Engineers, U.S. Army.

Applicant: GHJ LAND SERVICES, L.L.C.

Bidder	Cash Payment	Price/ Acre	Rental	Oil	Gas	Other



**TRACT 38988 - Jefferson Parish, Louisiana**

All of the lands now or formerly constituting the beds and bottoms of all water bodies of every nature and description the title of which vests in the State of Louisiana, together with all islands arising therein and other lands formed by accretion or by reliction, where allowed by law, excepting tax adjudicated lands, and not presently under mineral lease on April 11, 2007, situated in Jefferson Parish, Louisiana, and more particularly described as follows: Beginning at a point on the Eastern boundary of State Lease No. 1972, as amended, having Coordinates of X = 2,378,397.10 and Y = 318,563.12; thence East 1,081.50 feet to a point on the West boundary of State Lease No. 2453, as amended, having Coordinates of X = 2,379,478.60 and Y = 318,563.12; thence South 3,383.12 feet along the West boundary of said State Lease No. 2453 to the Northeast corner of State Lease No. 18010 having Coordinates of X = 2,379,478.60 and Y = 315,180.00; thence West 2,128.60 feet along the North boundary of said State Lease No. 18010 to its Northwest corner having Coordinates of X = 2,377,350.00 and Y = 315,180.00; thence North 752.50 feet to a point on the Southern boundary of said State Lease No. 1972 having Coordinates of X = 2,377,350.00 and Y = 315,932.50; thence along the boundary of said State Lease No. 1972 the following courses: North 71 degrees 13 minutes 00 seconds East 116.05 feet to a point having Coordinates of X = 2,377,459.87 and Y = 315,969.87; North 77 degrees 21 minutes 00 seconds East 251.10 feet to a point having Coordinates of X = 2,377,704.87 and Y = 316,024.86; North 83 degrees 48 minutes 00 seconds East 231.40 feet to a point having Coordinates of X = 2,377,934.92 and Y = 316,049.85; South 88 degrees 47 minutes 00 seconds East 235.10 feet to a point having Coordinates of X = 2,378,169.97 and Y = 316,044.86; South 87 degrees 51 minutes 00 seconds East 400.30 feet to a point having Coordinates of X = 2,378,569.98 and Y = 316,029.84; North 42 degrees 26 minutes 19 seconds East 250.00 feet to a point having Coordinates of X = 2,378,738.68 and Y = 316,214.34; North 49 degrees 07 minutes 35 seconds East 310.52 feet to a point having Coordinates of X = 2,378,973.48 and Y = 316,417.54; North 42 degrees 11 minutes 25 seconds East 300.03 feet to a point having Coordinates of X = 2,379,174.98 and Y = 316,639.84; North 14 degrees 59 minutes 49 seconds West 727.65 feet to a point having Coordinates of X = 2,378,986.69 and Y = 317,342.71; North 69 degrees 05 minutes 36 seconds East 131.99 feet to a point having Coordinates of X = 2,379,109.99 and Y = 317,389.81; North 16 degrees 41 minutes 57 seconds West 129.46 feet to a point having Coordinates of X = 2,379,072.79 and Y = 317,513.81; North 57 degrees 23 minutes 59 seconds East 20.42 feet to a point having Coordinates of X = 2,379,089.99 and Y = 317,524.81; North 37 degrees 52 minutes 30 seconds East 57.01 feet to a point having Coordinates of X = 2,379,125.00 and Y = 317,569.81; North 32 degrees 28 minutes 16 seconds East 65.19 feet to a point having Coordinates of X = 2,379,159.99 and Y = 317,624.81; North 18 degrees 26 minutes 06 seconds East 63.25 feet to a point having Coordinates of X = 2,379,180.00 and Y = 317,684.81; North 11 degrees 18 minutes 36 seconds East 76.49 feet to a point having Coordinates of X = 2,379,195.00 and Y = 317,759.82; North 60.00 feet to a point having Coordinates of X = 2,379,195.00 and Y = 317,819.82; North 10 degrees 37

minutes 58 seconds West 81.30 feet to a point having Coordinates of X = 2,379,180.00 and Y = 317,899.72; North 70 degrees 32 minutes 40 seconds West 264.50 feet to a point having Coordinates of X = 2,378,930.60 and Y = 317,987.82; North 16 degrees 42 minutes 16 seconds West 315.20 feet to a point having Coordinates of X = 2,378,840.00 and Y = 318,289.72; North 76 degrees 46 minutes 51 seconds West 185.41 feet to a point having Coordinates of X = 2,378,659.50 and Y = 318,332.12; North 22 degrees 11 minutes 03 seconds West 197.31 feet to a point having Coordinates of X = 2,378,585.00 and Y = 318,514.82 and North 75 degrees 35 minutes 03 seconds West 194.01 feet to the point of beginning, containing approximately **70.92 acres**, all as more particularly outlined on a plat on file in the Office of Mineral Resources, Department of Natural Resources. All bearings, distances and coordinates are based on Louisiana Coordinate System of 1927, (North or South Zone), where applicable.

NOTE: The above description of the Tract nominated for lease has been provided and corrected, where required, exclusively by the nomination party. Any mineral lease selected from this Tract and awarded by the Louisiana State Mineral Board shall be without warranty of any kind, either express, implied, or statutory, including, but not limited to, the implied warranties of merchantability and fitness for a particular purpose. Should the mineral lease awarded by the Louisiana State Mineral Board be subsequently modified, cancelled or abrogated due to the existence of conflicting leases, operating agreements, private claims or other future obligations or conditions which may affect all or any portion of the leased Tract, it shall not relieve the Lessee of the obligation to pay any bonus due thereon to the Louisiana State Mineral Board, nor shall the Louisiana State Mineral Board be obligated to refund any consideration paid by the Lessor prior to such modification, cancellation, or abrogation, including, but not limited to, bonuses, rentals and royalties.

NOTE: The State of Louisiana does hereby reserve, and this lease shall be subject to, the imprescriptible right of surface use in the nature of a servitude in favor of the Department of Natural Resources, including its Offices and Commissions, for the sole purpose of implementing, constructing, servicing and maintaining approved coastal zone management and/or restoration projects. Utilization of any and all rights derived under this lease by the mineral lessee, its agents, successors or assigns, shall not interfere with nor hinder the reasonable surface use by the Department of Natural Resources, its Offices or Commissions, as herein above reserved.

NOTE: The Department of Wildlife and Fisheries has designated certain areas in the coastal waters of the State of Louisiana as Oyster Seed Bed Areas. The exact location of those Seed Bed Areas must be obtained from the Department of Wildlife and Fisheries and any work done under a mineral lease from the State of Louisiana may necessarily be conducted in conformity with the rules and regulations promulgated by the said Department of Wildlife and Fisheries for Oyster Seed Bed Areas.

Applicant: GRAVES & CO.

Bidder	Cash Payment	Price/ Acre	Rental	Oil	Gas	Other



Office of Mineral Resources, Acres: 70.92 Tract Number: 38988

**TRACT 38989 - Terrebonne Parish, Louisiana**

All of the lands now or formerly constituting the beds and bottoms of all water bodies of every nature and description the title of which vests in the State of Louisiana, together with all islands arising therein and other lands formed by accretion or by reliction, where allowed by law, excepting tax adjudicated lands, and not presently under mineral lease on April 11, 2007, situated in Terrebonne Parish, Louisiana, and more particularly described as follows: Beginning at a point having Coordinates of X = 2,184,589.25 and Y = 294,459.76; thence North 6,500.00 feet to a point having Coordinates of X = 2,184,589.25 and Y = 300,959.76; thence East 3,500.00 feet to a point having Coordinates of X = 2,188,089.25 and Y = 300,959.76; thence South 6,500.00 feet to a point having Coordinates of X = 2,188,089.25 and Y = 294,459.76; thence West 3,500.00 feet to the point of beginning, containing approximately **6 acres**, all as more particularly outlined on a plat on file in the Office of Mineral Resources, Department of Natural Resources. All bearings, distances and coordinates are based on Louisiana Coordinate System of 1927, (North or South Zone), where applicable.

NOTE: The above description of the Tract nominated for lease has been provided and corrected, where required, exclusively by the nomination party. Any mineral lease selected from this Tract and awarded by the Louisiana State Mineral Board shall be without warranty of any kind, either express, implied, or statutory, including, but not limited to, the implied warranties of merchantability and fitness for a particular purpose. Should the mineral lease awarded by the Louisiana State Mineral Board be subsequently modified, cancelled or abrogated due to the existence of conflicting leases, operating agreements, private claims or other future obligations or conditions which may affect all or any portion of the leased Tract, it shall not relieve the Lessee of the obligation to pay any bonus due thereon to the Louisiana State Mineral Board, nor shall the Louisiana State Mineral Board be obligated to refund any consideration paid by the Lessor prior to such modification, cancellation, or abrogation, including, but not limited to, bonuses, rentals and royalties.

NOTE: The State of Louisiana does hereby reserve, and this lease shall be subject to, the imprescriptible right of surface use in the nature of a servitude in favor of the Department of Natural Resources, including its Offices and Commissions, for the sole purpose of implementing, constructing, servicing and maintaining approved coastal zone management and/or restoration projects. Utilization of any and all rights derived under this lease by the mineral lessee, its agents, successors or assigns, shall not interfere with nor hinder the reasonable surface use by the Department of Natural Resources, its Offices or Commissions, as herein above reserved.



Applicant: THEOPHILUS OIL, GAS & LAND SERVICES, LLC

Bidder	Cash Payment	Price/ Acre	Rental	Oil	Gas	Other

TERREBONNE PARISH

BAYOU DU LARGE

P.O.B.

T18S - R17E

Office of Mineral Resources, Acres: 6 Tract Number: 38989



**TRACT 38990 - Plaquemines Parish, Louisiana**

All of the lands now or formerly constituting the beds and bottoms of all water bodies of every nature and description the title of which vests in the State of Louisiana, together with all islands arising therein and other lands formed by accretion or by reliction, where allowed by law, excepting tax adjudicated lands, and not presently under mineral lease on April 11, 2007, situated in Plaquemines Parish, Louisiana, and more particularly described as follows: Beginning at the Northeast corner of the Northernmost portion of State Lease No. 1464, as amended, having Coordinates of X = 2,504,574.15 and Y = 271,908.97; thence South 89 degrees 15 minutes 00 seconds West 403.27 feet along the boundary of the Northernmost portion of said State Lease No. 1464 to the Southeast corner of State Lease No. 2376 having Coordinates of X = 2,504,170.91 and Y = 271,903.68; thence along the boundary of said State Lease No. 2376 the following courses: North 00 degrees 45 minutes 00 seconds West 5,000.00 feet to a point having Coordinates of X = 2,504,105.46 and Y = 276,903.26 and South 89 degrees 15 minutes 00 seconds West 7,952.84 feet to the Northwest corner of said State Lease No. 2376, also being a point on the Eastern boundary of State Lease No. 2104 having Coordinates of X = 2,496,153.31 and Y = 276,799.16; thence North 00 degrees 45 minutes 00 seconds West 6,399.91 feet along the Eastern boundary of said State Lease No. 2104 to its Northeast corner having Coordinates of X = 2,496,069.54 and Y = 283,198.52; thence North 819.84 feet to a point having Coordinates of X = 2,496,069.54 and Y = 284,018.36; thence North 86 degrees 00 minutes 07 seconds East 15,853.21 feet to a point having Coordinates of X = 2,511,884.18 and Y = 285,123.66; thence South 00 degrees 53 minutes 43 seconds East 18,480.00 feet to a point having Coordinates of X = 2,512,172.93 and Y = 266,645.92; thence South 84 degrees 43 minutes 44 seconds West 7,574.97 feet to the Northeast corner of State Lease No. 17266, also being the Southeast corner of State Lease No. 18911 having Coordinates of X = 2,504,630.00 and Y = 265,950.00; thence North 01 degree 08 minutes 23 seconds West 2,808.00 feet along the East boundary of said State Lease No. 18911 to its Northeast corner, also being the Easternmost Southeast corner of the Northernmost portion of said State Lease No. 1464 having Coordinates of X = 2,504,574.15 and Y = 268,757.44; thence North 3,151.53 feet along the Eastern boundary of the Northernmost portion of said State Lease No. 1464 to the point of beginning, containing approximately **1,375 acres**, all as more particularly outlined on a plat on file in the Office of Mineral Resources, Department of Natural Resources. All bearings, distances and coordinates are based on Louisiana Coordinate System of 1927, (North or South Zone), where applicable.

NOTE: The above description of the Tract nominated for lease has been provided and corrected, where required, exclusively by the nomination party. Any mineral lease selected from this Tract and awarded by the Louisiana State Mineral Board shall be without warranty of any kind, either express, implied, or statutory, including, but not limited to, the implied warranties of merchantability and fitness for a particular purpose. Should the mineral lease awarded by the Louisiana State Mineral

Board be subsequently modified, cancelled or abrogated due to the existence of conflicting leases, operating agreements, private claims or other future obligations or conditions which may affect all or any portion of the leased Tract, it shall not relieve the Lessee of the obligation to pay any bonus due thereon to the Louisiana State Mineral Board, nor shall the Louisiana State Mineral Board be obligated to refund any consideration paid by the Lessor prior to such modification, cancellation, or abrogation, including, but not limited to, bonuses, rentals and royalties.

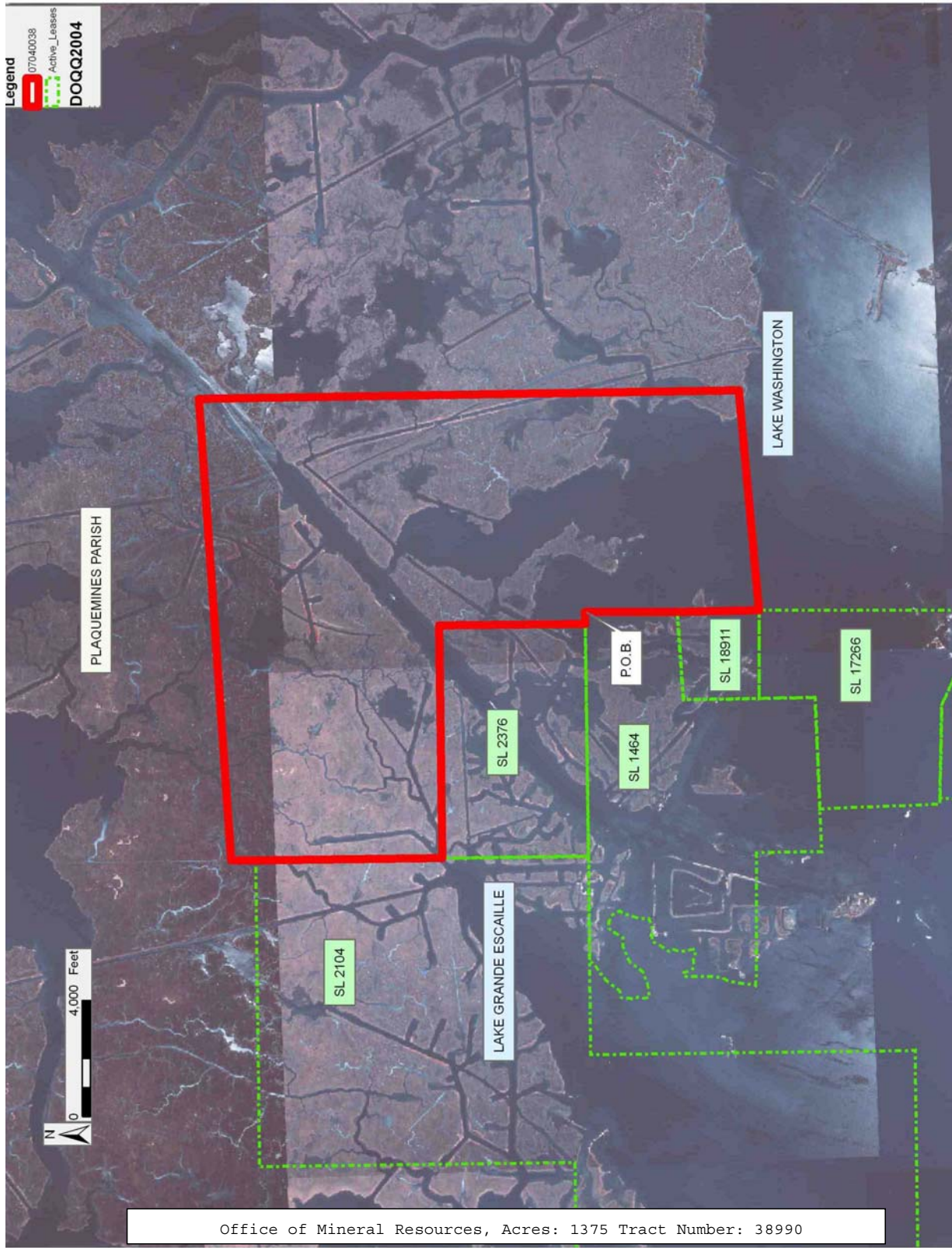
NOTE: The State of Louisiana does hereby reserve, and this lease shall be subject to, the imprescriptible right of surface use in the nature of a servitude in favor of the Department of Natural Resources, including its Offices and Commissions, for the sole purpose of implementing, constructing, servicing and maintaining approved coastal zone management and/or restoration projects. Utilization of any and all rights derived under this lease by the mineral lessee, its agents, successors or assigns, shall not interfere with nor hinder the reasonable surface use by the Department of Natural Resources, its Offices or Commissions, as herein above reserved.

NOTE: The Department of Wildlife and Fisheries has designated certain areas in the coastal waters of the State of Louisiana as Oyster Seed Bed Areas. The exact location of those Seed Bed Areas must be obtained from the Department of Wildlife and Fisheries and any work done under a mineral lease from the State of Louisiana may necessarily be conducted in conformity with the rules and regulations promulgated by the said Department of Wildlife and Fisheries for Oyster Seed Bed Areas.

Applicant: ACADIAN LAND SERVICES, LLC

Bidder	Cash Payment	Price/ Acre	Rental	Oil	Gas	Other





**TRACT 38991 - Plaquemines Parish, Louisiana**

All of the lands now or formerly constituting the beds and bottoms of all water bodies of every nature and description the title of which vests in the State of Louisiana, together with all islands arising therein and other lands formed by accretion or by reliction, where allowed by law, excepting tax adjudicated lands, and not presently under mineral lease on April 11, 2007, situated in Plaquemines Parish, Louisiana, and more particularly described as follows: Beginning at a point having Coordinates of X = 2,464,363.87 and Y = 281,944.55; thence East 1,008.30 feet to the Southwest corner of State Lease No. 17376, as amended, having Coordinates of X = 2,465,372.16 and Y = 281,944.55; thence South 89 degrees 45 minutes 25 seconds East 3,027.86 feet along the South boundary of said State Lease No. 17376 to its Southeast corner, also being the Southwest corner of State Lease No. 17378, as amended, having Coordinates of X = 2,468,400.00 and Y = 281,931.71; thence along the boundary of said State Lease No. 17378 the following courses: South 89 degrees 45 minutes 25 seconds East 5,147.49 feet to its Southeast corner having Coordinates of X = 2,473,547.44 and Y = 281,909.88 and North 1,151.20 feet to a point having Coordinates of X = 2,473,547.44 and Y = 283,061.08; thence East 1,448.11 feet to a point having Coordinates of X = 2,474,995.55 and Y = 283,061.08; thence South 4,726.03 feet to a point on the Northern boundary of State Lease No. 18671 having Coordinates of X = 2,474,995.55 and Y = 278,335.05; thence North 86 degrees 02 minutes 56 seconds West 10,617.15 feet along the Northern boundary of said State Lease No. 18671 to a point having Coordinates of X = 2,464,403.63 and Y = 279,066.62; thence North 00 degrees 47 minutes 30 seconds West 2,878.20 feet to the point of beginning, containing approximately **823 acres**, all as more particularly outlined on a plat on file in the Office of Mineral Resources, Department of Natural Resources. All bearings, distances and coordinates are based on Louisiana Coordinate System of 1927, (North or South Zone), where applicable.

NOTE: The above description of the Tract nominated for lease has been provided and corrected, where required, exclusively by the nomination party. Any mineral lease selected from this Tract and awarded by the Louisiana State Mineral Board shall be without warranty of any kind, either express, implied, or statutory, including, but not limited to, the implied warranties of merchantability and fitness for a particular purpose. Should the mineral lease awarded by the Louisiana State Mineral Board be subsequently modified, cancelled or abrogated due to the existence of conflicting leases, operating agreements, private claims or other future obligations or conditions which may affect all or any portion of the leased Tract, it shall not relieve the Lessee of the obligation to pay any bonus due thereon to the Louisiana State Mineral Board, nor shall the Louisiana State Mineral Board be obligated to refund any consideration paid by the Lessor prior to such modification, cancellation, or abrogation, including, but not limited to, bonuses, rentals and royalties.

NOTE: The State of Louisiana does hereby reserve, and this lease shall be subject to, the imprescriptible right of surface use in the nature of a servitude in favor of the Department of Natural Resources, including its Offices and Commissions, for the sole purpose of implementing, constructing, servicing and maintaining approved coastal zone management and/or restoration projects. Utilization of any and all rights derived under this lease by the mineral lessee, its agents, successors or assigns, shall not interfere with nor hinder the reasonable surface use by the Department of Natural Resources, its Offices or Commissions, as herein above reserved.

NOTE: The Department of Wildlife and Fisheries has designated certain areas in the coastal waters of the State of Louisiana as Oyster Seed Bed Areas. The exact location of those Seed Bed Areas must be obtained from the Department of Wildlife and Fisheries and any work done under a mineral lease from the State of Louisiana may necessarily be conducted in conformity with the rules and regulations promulgated by the said Department of Wildlife and Fisheries for Oyster Seed Bed Areas.

Applicant: ACADIAN LAND SERVICES, LLC

Bidder	Cash Payment	Price/ Acre	Rental	Oil	Gas	Other

