

TRACT 38962 - St. Bernard Parish, Louisiana

All of the lands now or formerly constituting the beds and bottoms of all water bodies of every nature and description the title of which vests in the State of Louisiana, together with all islands arising therein and other lands formed by accretion or by reliction, where allowed by law, excepting tax adjudicated lands, and not presently under mineral lease on April 11, 2007, situated in St. Bernard Parish, Louisiana, and more particularly described as follows: Beginning at a point having Coordinates of X = 2,567,787.00 and Y = 405,233.00; thence East 6,931.00 feet to a point having Coordinates of X = 2,574,718.00 and Y = 405,233.00; thence South 16,000.00 feet to a point having Coordinates of X = 2,574,718.00 and Y = 389,233.00; thence West 6,931.00 feet to a point having Coordinates of X = 2,567,787.00 and Y = 389,233.00; thence North 16,000.00 feet to the point of beginning, containing approximately **1,575 acres**, all as more particularly outlined on a plat on file in the Office of Mineral Resources, Department of Natural Resources. All bearings, distances and coordinates are based on Louisiana Coordinate System of 1927, (North or South Zone), where applicable.

NOTE: The above description of the Tract nominated for lease has been provided and corrected, where required, exclusively by the nomination party. Any mineral lease selected from this Tract and awarded by the Louisiana State Mineral Board shall be without warranty of any kind, either express, implied, or statutory, including, but not limited to, the implied warranties of merchantability and fitness for a particular purpose. Should the mineral lease awarded by the Louisiana State Mineral Board be subsequently modified, cancelled or abrogated due to the existence of conflicting leases, operating agreements, private claims or other future obligations or conditions which may affect all or any portion of the leased Tract, it shall not relieve the Lessee of the obligation to pay any bonus due thereon to the Louisiana State Mineral Board, nor shall the Louisiana State Mineral Board be obligated to refund any consideration paid by the Lessor prior to such modification, cancellation, or abrogation, including, but not limited to, bonuses, rentals and royalties.

NOTE: The State of Louisiana does hereby reserve, and this lease shall be subject to, the imprescriptible right of surface use in the nature of a servitude in favor of the Department of Natural Resources, including its Offices and Commissions, for the sole purpose of implementing, constructing, servicing and maintaining approved coastal zone management and/or restoration projects. Utilization of any and all rights derived under this lease by the mineral lessee, its agents, successors or assigns, shall not interfere with nor hinder the reasonable surface use by the Department of Natural Resources, its Offices or Commissions, as herein above reserved.

NOTE: The Department of Wildlife and Fisheries has designated certain areas in the coastal waters of the State of Louisiana as Oyster Seed Bed Areas. The exact location of those Seed Bed Areas must be obtained from

the Department of Wildlife and Fisheries and any work done under a mineral lease from the State of Louisiana may necessarily be conducted in conformity with the rules and regulations promulgated by the said Department of Wildlife and Fisheries for Oyster Seed Bed Areas.

Applicant: KARE-SUE ENERGY, INC.

Bidder	Cash Payment	Price/ Acre	Rental	Oil	Gas	Other

Legend

 07040036
Active_Leases

 DOQQ2004

ST BERNARD PARISH

MISSISSIPPI RIVER GULF OUTLET CANAL

SL 4909

SL 18724

CHANDELEUR SOUND AREA

LAKE MACHIAS

PISANA LAGOON

P.O.B.

T15S - R16E

LAKE OF SECOND TREES



TRACT 38963 - Portion of Block 47, Chandeleur Sound Area, St. Bernard Parish, Louisiana

All of the lands now or formerly constituting the beds and bottoms of all water bodies of every nature and description the title of which vests in the State of Louisiana, together with all islands arising therein and other lands formed by accretion or by reliction, where allowed by law, excepting tax adjudicated lands, and not presently under mineral lease on April 11, 2007, situated in St. Bernard Parish, Louisiana, and more particularly described as follows: Beginning at a point within Block 47, Chandeleur Sound Area, having Coordinates of X = 2,598,475.00 and Y = 403,455.00; thence East 7,375.00 feet to a point on the East line of said Block 47, having Coordinates of X = 2,605,850.00 and Y = 403,455.00; thence South 1,455.00 feet along the East line of said Block 47 to the Northeast corner of State Lease No. 4039, having Coordinates of X = 2,605,850.00 and Y = 402,000.00; thence West 7,375.00 feet along the North line of said State Lease No. 4039 to its Northwest corner having Coordinates of X = 2,598,475.00 and Y = 402,000.00; thence North 1,455.00 feet to the point of beginning, containing approximately **179 acres**, all as more particularly outlined on a plat on file in the Office of Mineral Resources, Department of Natural Resources. All bearings, distances and coordinates are based on Louisiana Coordinate System of 1927, (North or South Zone), where applicable.

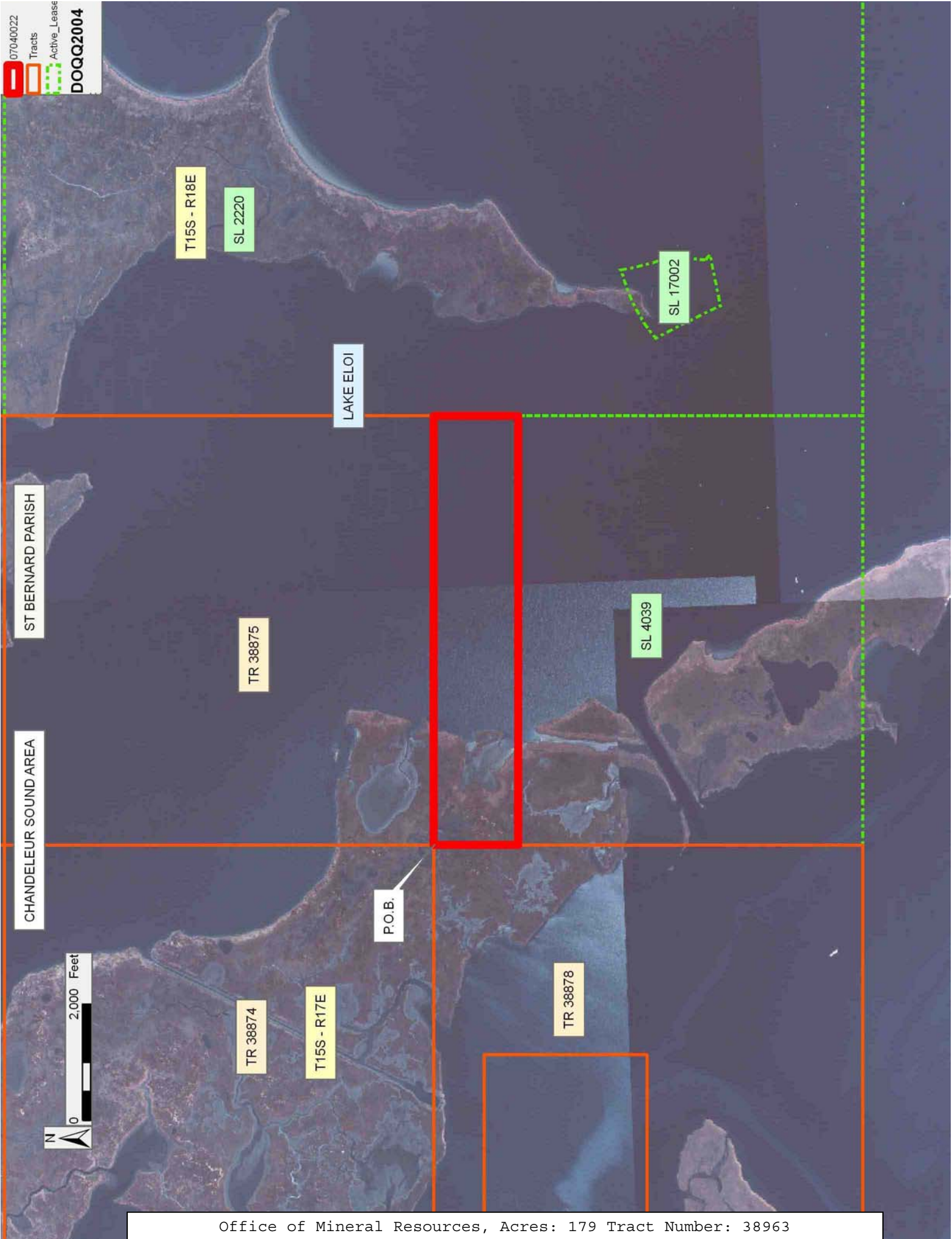
NOTE: The above description of the Tract nominated for lease has been provided and corrected, where required, exclusively by the nomination party. Any mineral lease selected from this Tract and awarded by the Louisiana State Mineral Board shall be without warranty of any kind, either express, implied, or statutory, including, but not limited to, the implied warranties of merchantability and fitness for a particular purpose. Should the mineral lease awarded by the Louisiana State Mineral Board be subsequently modified, cancelled or abrogated due to the existence of conflicting leases, operating agreements, private claims or other future obligations or conditions which may affect all or any portion of the leased Tract, it shall not relieve the Lessee of the obligation to pay any bonus due thereon to the Louisiana State Mineral Board, nor shall the Louisiana State Mineral Board be obligated to refund any consideration paid by the Lessor prior to such modification, cancellation, or abrogation, including, but not limited to, bonuses, rentals and royalties.

NOTE: The State of Louisiana does hereby reserve, and this lease shall be subject to, the imprescriptible right of surface use in the nature of a servitude in favor of the Department of Natural Resources, including its Offices and Commissions, for the sole purpose of implementing, constructing, servicing and maintaining approved coastal zone management and/or restoration projects. Utilization of any and all rights derived under this lease by the mineral lessee, its agents, successors or assigns, shall not interfere with nor hinder the reasonable surface use by the Department of Natural Resources, its Offices or Commissions, as herein above reserved.

NOTE: The Department of Wildlife and Fisheries has designated certain areas in the coastal waters of the State of Louisiana as Oyster Seed Bed Areas. The exact location of those Seed Bed Areas must be obtained from the Department of Wildlife and Fisheries and any work done under a mineral lease from the State of Louisiana may necessarily be conducted in conformity with the rules and regulations promulgated by the said Department of Wildlife and Fisheries for Oyster Seed Bed Areas.

Applicant: KARE-SUE ENERGY, INC.

Bidder	Cash Payment	Price/ Acre	Rental	Oil	Gas	Other



TRACT 38964 - Portion of Block 72, Chandeleur Sound Area, St. Bernard Parish, Louisiana

All of the lands now or formerly constituting the beds and bottoms of all water bodies of every nature and description the title of which vests in the State of Louisiana, together with all islands arising therein and other lands formed by accretion or by reliction, where allowed by law, excepting tax adjudicated lands, and not presently under mineral lease on April 11, 2007, situated in St. Bernard Parish, Louisiana, and more particularly described as follows: Beginning at a point on the North line of Block 72, Chandeleur Sound Area, having Coordinates of X = 2,591,280.02 and Y = 396,080.00; thence East 14,569.98 feet to a point having Coordinates of X = 2,605,850.00 and Y = 396,080.00; thence South 7,375.00 feet to a point having Coordinates of X = 2,605,850.00 and Y = 388,705.00; thence West 14,750.00 feet to a point on the West line of Block 72, having Coordinates of X = 2,591,100.00 and Y = 388,705.00; thence North 3,656.50 feet along the West line of said Block 72, to a point on the South line of State Lease No. 18510, having Coordinates of X = 2,591,100.00 and Y = 392,361.50; thence along the boundary of said State Lease NO. 18510 the following courses: East 275.68 feet and North 1,038.50 feet to its Northeast corner, also being the Southeast corner of State Lease No. 18073, having Coordinates of X = 2,591,375.68 and Y = 393,400.00; thence North 02 degrees 02 minutes 40 seconds West 2,681.71 feet to the point of beginning, **LESS AND EXCEPT** State Lease No. 16158 that lies within the above described tract, more particularly described as follows: Commencing at the point of beginning of the above Nominated Area having Coordinates of X = 2,591,280.02 and Y = 396,080.00; thence South 69 degrees 37 minutes 40 seconds East 9,664.28 feet to a starting point on the boundary of State Lease No. 16158 having Coordinates of X = 2,600,339.81 and Y = 392,715.71; thence along the boundary of said State Lease No. 16158 the following courses: Northwesterly along an arc to the left with a radius of 23,516.29 feet to a point having Coordinates of X = 2,599,274.94 and Y = 393,773.38, Northwesterly along an arc to the right with a radius of 1,993.54 feet to a point having Coordinates of X = 2,598,852.49 and Y = 394,422.52, Northeasterly along an arc to the right with a radius of 895.64 feet to a point having Coordinates of X = 2,598,913.67 and Y = 395,321.57, Northeasterly along an arc to the right with a radius of 1,308.22 feet to a point having Coordinates of X = 2,599,665.86 and Y = 395,841.52, Northeasterly along an arc to the right with a radius of 2,054.50 feet to a point having Coordinates of X = 2,600,365.32 and Y = 395,923.79, Southeasterly along an arc to the left with a radius of 39,526.22 feet to a point having Coordinates of X = 2,601,353.29 and Y = 395,902.28, Southeasterly along an arc to the right with a radius of 2,851.87 feet to a point having Coordinates of X = 2,602,475.44 and Y = 395,666.59, Southeasterly along an arc to the right with a radius of 4,498.37 feet to a point having Coordinates of X = 2,603,208.95 and Y = 395,239.35, Southeasterly along an arc to the right with a radius of 1,440.34 feet to a point having Coordinates of X = 2,603,784.94 and Y = 393,897.29, Southwesterly along an arc to the right with a radius of 2,739.28 feet to a point having Coordinates of X = 2,603,389.67 and Y = 392,767.90,

Southwesterly along an arc to the right with a radius of 2,578.27 feet to a point having Coordinates of X = 2,602,181.82 and Y = 391,806.58, Northwesterly along an arc to the right with a radius of 1,253.85 feet to a point having Coordinates of X = 2,601,120.42 and Y = 391,960.29 and Northwesterly along an arc to the right with a radius of 3,793.67 feet to the starting point, containing approximately **1,984 acres**, all as more particularly outlined on a plat on file in the Office of Mineral Resources, Department of Natural Resources. All bearings, distances and coordinates are based on Louisiana Coordinate System of 1927, (North or South Zone), where applicable.

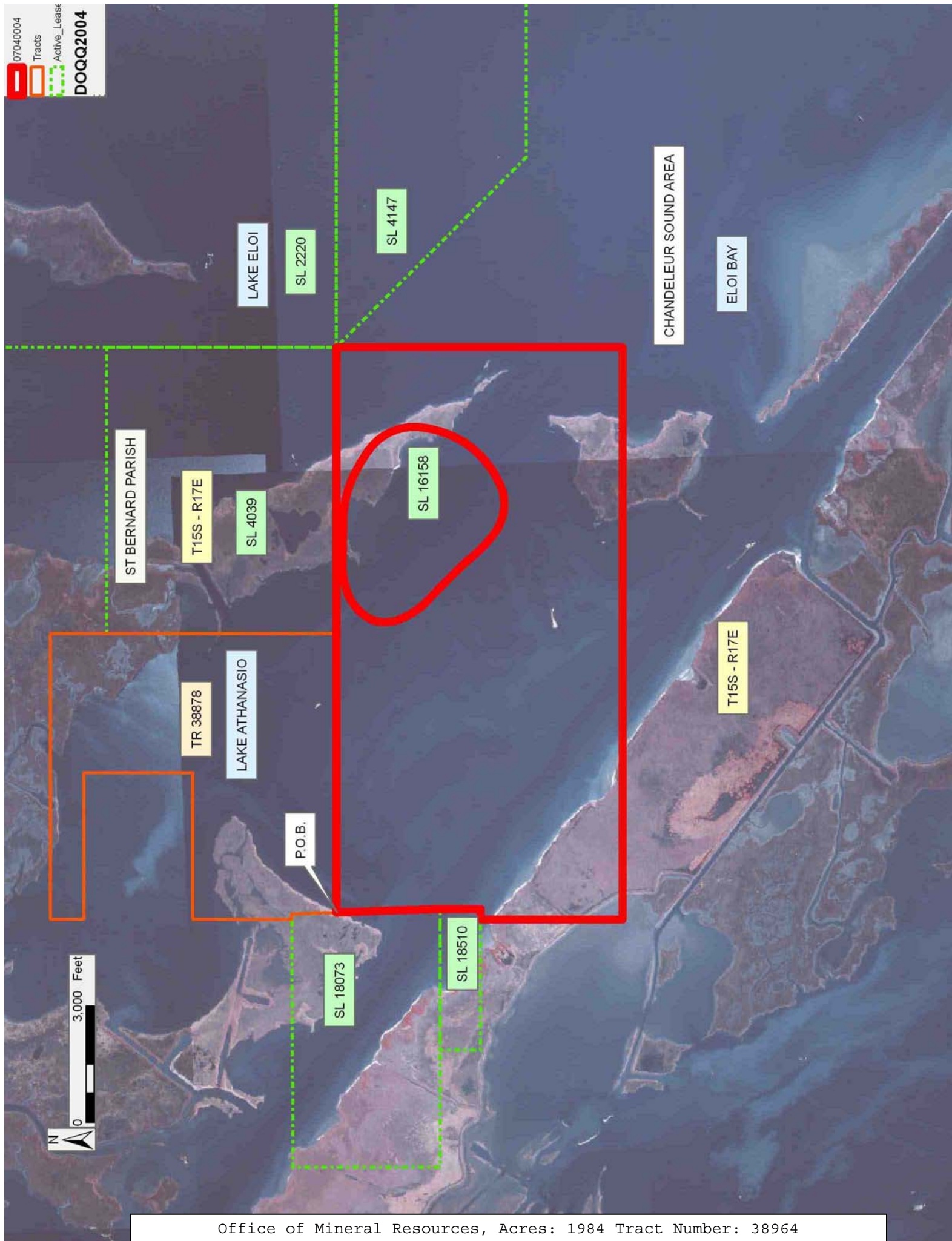
NOTE: The above description of the Tract nominated for lease has been provided and corrected, where required, exclusively by the nomination party. Any mineral lease selected from this Tract and awarded by the Louisiana State Mineral Board shall be without warranty of any kind, either express, implied, or statutory, including, but not limited to, the implied warranties of merchantability and fitness for a particular purpose. Should the mineral lease awarded by the Louisiana State Mineral Board be subsequently modified, cancelled or abrogated due to the existence of conflicting leases, operating agreements, private claims or other future obligations or conditions which may affect all or any portion of the leased Tract, it shall not relieve the Lessee of the obligation to pay any bonus due thereon to the Louisiana State Mineral Board, nor shall the Louisiana State Mineral Board be obligated to refund any consideration paid by the Lessor prior to such modification, cancellation, or abrogation, including, but not limited to, bonuses, rentals and royalties.

NOTE: The State of Louisiana does hereby reserve, and this lease shall be subject to, the imprescriptible right of surface use in the nature of a servitude in favor of the Department of Natural Resources, including its Offices and Commissions, for the sole purpose of implementing, constructing, servicing and maintaining approved coastal zone management and/or restoration projects. Utilization of any and all rights derived under this lease by the mineral lessee, its agents, successors or assigns, shall not interfere with nor hinder the reasonable surface use by the Department of Natural Resources, its Offices or Commissions, as herein above reserved.

NOTE: The Department of Wildlife and Fisheries has designated certain areas in the coastal waters of the State of Louisiana as Oyster Seed Bed Areas. The exact location of those Seed Bed Areas must be obtained from the Department of Wildlife and Fisheries and any work done under a mineral lease from the State of Louisiana may necessarily be conducted in conformity with the rules and regulations promulgated by the said Department of Wildlife and Fisheries for Oyster Seed Bed Areas.

Applicant: KARE-SUE ENERGY, INC.

Bidder	Cash Payment	Price/ Acre	Rental	Oil	Gas	Other



TRACT 38965 - St. Bernard Parish, Louisiana

All of the lands now or formerly constituting the beds and bottoms of all water bodies of every nature and description the title of which vests in the State of Louisiana, together with all islands arising therein and other lands formed by accretion or by reliction, where allowed by law, excepting tax adjudicated lands, and not presently under mineral lease on April 11, 2007, situated in St. Bernard Parish, Louisiana, and more particularly described as follows: Beginning at a point having Coordinates of X = 2,526,691.00 and Y = 396,025.00; thence East 10,020.74 feet to the Southwest corner of State Lease No. 19069 and the Northwest corner of State Lease No. 19074 having Coordinates of X = 2,536,711.74 and Y = 396,025.00; thence South 01 degrees 33 minutes 49 seconds East 6,794.53 feet along the West line of said State Lease No. 19074 to the Northwest corner of State Lease No. 19075 having Coordinates of X = 2,536,897.13 and Y = 389,233.00; thence West 10,206.13 feet to a point having Coordinates of X = 2,526,691.00 and Y = 389,233.00; thence North 6,792.00 feet to the point of beginning, containing approximately **774 acres**, all as more particularly outlined on a plat on file in the Office of Mineral Resources, Department of Natural Resources. All bearings, distances and coordinates are based on Louisiana Coordinate System of 1927, (North or South Zone), where applicable.

NOTE: The above description of the Tract nominated for lease has been provided and corrected, where required, exclusively by the nomination party. Any mineral lease selected from this Tract and awarded by the Louisiana State Mineral Board shall be without warranty of any kind, either express, implied, or statutory, including, but not limited to, the implied warranties of merchantability and fitness for a particular purpose. Should the mineral lease awarded by the Louisiana State Mineral Board be subsequently modified, cancelled or abrogated due to the existence of conflicting leases, operating agreements, private claims or other future obligations or conditions which may affect all or any portion of the leased Tract, it shall not relieve the Lessee of the obligation to pay any bonus due thereon to the Louisiana State Mineral Board, nor shall the Louisiana State Mineral Board be obligated to refund any consideration paid by the Lessor prior to such modification, cancellation, or abrogation, including, but not limited to, bonuses, rentals and royalties.

NOTE: The State of Louisiana does hereby reserve, and this lease shall be subject to, the imprescriptible right of surface use in the nature of a servitude in favor of the Department of Natural Resources, including its Offices and Commissions, for the sole purpose of implementing, constructing, servicing and maintaining approved coastal zone management and/or restoration projects. Utilization of any and all rights derived under this lease by the mineral lessee, its agents, successors or assigns, shall not interfere with nor hinder the reasonable surface use by the Department of Natural Resources, its Offices or Commissions, as herein above reserved.

NOTE: The Department of Wildlife and Fisheries has designated certain areas in the coastal waters of the State of Louisiana as Oyster Seed Bed Areas. The exact location of those Seed Bed Areas must be obtained from the Department of Wildlife and Fisheries and any work done under a mineral lease from the State of Louisiana may necessarily be conducted in conformity with the rules and regulations promulgated by the said Department of Wildlife and Fisheries for Oyster Seed Bed Areas.

Applicant: KARE-SUE ENERGY, INC.

Bidder	Cash Payment	Price/ Acre	Rental	Oil	Gas	Other

ST BERNARD PARISH

T15S - R15E

SL 19069

SL 19074

SL 19075

LAKE JEAN LOUIS ROBIN

BOTTLE BAYOU

P.O.B.

0 3,000 Feet

TRACT 38966 - St. Bernard Parish, Louisiana

All of the lands now or formerly constituting the beds and bottoms of all water bodies of every nature and description the title of which vests in the State of Louisiana, together with all islands arising therein and other lands formed by accretion or by reliction, where allowed by law, excepting tax adjudicated lands, and not presently under mineral lease on April 11, 2007, situated in St. Bernard Parish, Louisiana, and more particularly described as follows: Beginning at the Northeast corner of State Lease No. 19073 having Coordinates of X = 2,555,161.56 and Y = 396,025.00; thence East 5,694.44 feet to a point having Coordinates of X = 2,560,856.00 and Y = 396,025.00; thence South 6,792.00 feet to a point having Coordinates of X = 2,560,856.00 and Y = 389,233.00; thence West 5,459.10 feet to the Northeast corner of State Lease No. 19076 and also being the Southeast corner of State Lease No. 19073 having Coordinates of X = 2,555,396.90 and Y = 389,233.00; thence North 01 degrees 59 minutes 04 seconds West 6,796.08 feet along the East line of said State Lease No. 19073 to the point of beginning, containing approximately **869 acres**, all as more particularly outlined on a plat on file in the Office of Mineral Resources, Department of Natural Resources. All bearings, distances and coordinates are based on Louisiana Coordinate System of 1927, (North or South Zone), where applicable.

NOTE: The above description of the Tract nominated for lease has been provided and corrected, where required, exclusively by the nomination party. Any mineral lease selected from this Tract and awarded by the Louisiana State Mineral Board shall be without warranty of any kind, either express, implied, or statutory, including, but not limited to, the implied warranties of merchantability and fitness for a particular purpose. Should the mineral lease awarded by the Louisiana State Mineral Board be subsequently modified, cancelled or abrogated due to the existence of conflicting leases, operating agreements, private claims or other future obligations or conditions which may affect all or any portion of the leased Tract, it shall not relieve the Lessee of the obligation to pay any bonus due thereon to the Louisiana State Mineral Board, nor shall the Louisiana State Mineral Board be obligated to refund any consideration paid by the Lessor prior to such modification, cancellation, or abrogation, including, but not limited to, bonuses, rentals and royalties.

NOTE: The State of Louisiana does hereby reserve, and this lease shall be subject to, the imprescriptible right of surface use in the nature of a servitude in favor of the Department of Natural Resources, including its Offices and Commissions, for the sole purpose of implementing, constructing, servicing and maintaining approved coastal zone management and/or restoration projects. Utilization of any and all rights derived under this lease by the mineral lessee, its agents, successors or assigns, shall not interfere with nor hinder the reasonable surface use by the Department of Natural Resources, its Offices or Commissions, as herein above reserved.

NOTE: The Department of Wildlife and Fisheries has designated certain areas in the coastal waters of the State of Louisiana as Oyster Seed Bed Areas. The exact location of those Seed Bed Areas must be obtained from the Department of Wildlife and Fisheries and any work done under a mineral lease from the State of Louisiana may necessarily be conducted in conformity with the rules and regulations promulgated by the said Department of Wildlife and Fisheries for Oyster Seed Bed Areas.

Applicant: KARE-SUE ENERGY, INC.

Bidder	Cash Payment	Price/ Acre	Rental	Oil	Gas	Other

ST BERNARD PARISH

T15S - R16E

LAKE COQUILLE

P.O.B.

SL 19070

SL 19073

SL 19076

SL 18838

2,000 Feet

TRACT 38967 - Portion of Block 73, Chandeleur Sound Area, and Block 1, Main Pass Area, Revised, St. Bernard Parish, Louisiana

All of the lands now or formerly constituting the beds and bottoms of all water bodies of every nature and description the title of which vests in the State of Louisiana, together with all islands arising therein and other lands formed by accretion or by reliction, where allowed by law, excepting tax adjudicated lands, and not presently under mineral lease on April 11, 2007, situated in St. Bernard Parish, Louisiana, and more particularly described as follows: Beginning at a point within Block 73, Chandeleur Sound Area having Coordinates of X = 2,578,748.00 and Y = 389,233.00; thence East 2,337.22 feet to a point on the West line of State Lease No. 18041 having Coordinates X = 2,581,085.22 and Y = 389,233.00; thence along the boundary of said State Lease No. 18041 the following courses: South 01 degrees 48 minutes 04 seconds East 3,204.58 feet and East 6,549.09 feet to a point on the Northern boundary line of State Lease No. 15959, as amended, having Coordinates of X = 2,587,735.03 and Y = 386,030.00; thence along the boundary of said State Lease No. 15959 the following courses: South 75 degrees 30 minutes 36 seconds West 209.57 feet, South 70 degrees 54 minutes 39 seconds West 599.32 feet, South 63 degrees 37 minutes 44 seconds West 405.67 feet, South 59 degrees 21 minutes 35 seconds West 1,000.36 feet, South 63 degrees 34 minutes 54 seconds West 598.91 feet, South 65 degrees 35 minutes 56 seconds West 1,004.35 feet, South 68 degrees 49 minutes 42 seconds West 990.83 feet, South 74 degrees 53 minutes 16 seconds West 604.96 feet, South 81 degrees 43 minutes 56 seconds West 605.36 feet and South 81 degrees 46 minutes 12 seconds West 249.76 feet to the Northeast corner of State Lease No. 17109 having Coordinates of X = 2,581,936.36 and Y = 383,771.78; thence along the boundary of said State Lease No. 17109 the following courses: South 81 degrees 46 minutes 13 seconds West 748.94 feet and South 76 degrees 24 minutes 57 seconds East 489.45 feet to a point on the boundary of State Lease No. 15959 having Coordinates of X = 2,581,670.89 and Y = 383,549.61; thence along the boundary of said State Lease No. 15959 the following courses: South 76 degrees 24 minutes 57 seconds East 501.55, South 73 degrees 26 minutes 52 seconds East 299.06 feet, South 61 degrees 47 minutes 44 seconds East 108.65 feet, South 37 degrees 16 minutes 32 seconds East 105.11 feet, South 19 degrees 12 minutes 46 seconds East 116.02 feet, South 08 degrees 17 minutes 28 seconds East 100.14 feet, South 08 degrees 34 minutes 50 seconds West 212.80 feet, South 15 degrees 31 minutes 20 seconds West 1,012.40 feet and South 11 degrees 08 minutes 02 seconds West 496.42 feet to a point common with State Lease No. 15960 and State Lease No. 17619, having Coordinates of X = 2,582,258.57 and Y = 381,330.00; thence along the boundary of said State Lease No. 17619 the following courses: West 1,608.57 feet, South 1,830.00 feet, North 70 degrees 47 minutes 56 seconds East 4,256.81 feet and North 430.00 feet to a point on the South line State Lease No. 17618 having Coordinates of X = 2,584,670.00 and Y = 381,330.00; thence along the boundary of said State Lease No. 17618 the following courses: East 280.00 feet and North 809.39 feet to a point on the boundary of State Lease No. 15959 having Coordinates of X = 2,584,950.00 and Y = 382,139.39; thence along the

boundary of said State Lease No. 15959 the following courses: North 63 degrees 47 minutes 43 seconds East 78.22 feet, North 61 degrees 26 minutes 50 seconds East 1,627.62 feet, North 58 degrees 33 minutes 03 seconds East 1,000.42 feet, North 55 degrees 38 minutes 16 seconds East 2,168.32 feet, North 49 degrees 36 minutes 10 seconds East 1,202.25 feet, North 55 degrees 39 minutes 15 seconds West 399.34 feet, North 64 degrees 45 minutes 33 seconds West 297.24 feet, North 69 degrees 26 minutes 32 seconds West 303.57 feet, North 75 degrees 50 minutes 54 seconds West 302.06 feet, North 80 degrees 45 minutes 03 seconds West 315.94 feet, North 87 degrees 36 minutes 34 seconds West 398.69 feet, North 85 degrees 30 minutes 31 seconds West 298.30 feet and South 75 degrees 30 minutes 36 seconds West 93.53 feet to the Southeast corner of State Lease No. 18041 having Coordinates of X = 2,587,735.03 and Y = 386,030.00; thence North 6,331.50 feet along the East line of said State Lease No. 18041 to the Southwest corner of State Lease No. 18510 having Coordinates of X = 2,587,735.03 and Y = 392,361.50; thence East 3,364.97 feet along the South line of said State Lease No. 18510 to a point on the East line of Block 73, having Coordinates of X = 2,591,100.00 and Y = 392,361.50; thence South 11,031.50 feet along the East line of said Block 73 to its Southeast corner having Coordinates of X = 2,591,100.00 and Y = 381,330.00; thence South 2,348.00 feet to a point within Block 1, Main Pass Area, Revised, having Coordinates X = 2,591,100.00 and Y = 378,982.00; thence West 12,352.00 feet to a point having Coordinates X = 2,578,748.00 and Y = 378,982.00; thence North 10,251.00 feet to the point of beginning, containing approximately **1,962 acres**, all as more particularly outlined on a plat on file in the Office of Mineral Resources, Department of Natural Resources. All bearings, distances and coordinates are based on Louisiana Coordinate System of 1927, (North or South Zone), where applicable.

NOTE: The above description of the Tract nominated for lease has been provided and corrected, where required, exclusively by the nomination party. Any mineral lease selected from this Tract and awarded by the Louisiana State Mineral Board shall be without warranty of any kind, either express, implied, or statutory, including, but not limited to, the implied warranties of merchantability and fitness for a particular purpose. Should the mineral lease awarded by the Louisiana State Mineral Board be subsequently modified, cancelled or abrogated due to the existence of conflicting leases, operating agreements, private claims or other future obligations or conditions which may affect all or any portion of the leased Tract, it shall not relieve the Lessee of the obligation to pay any bonus due thereon to the Louisiana State Mineral Board, nor shall the Louisiana State Mineral Board be obligated to refund any consideration paid by the Lessor prior to such modification, cancellation, or abrogation, including, but not limited to, bonuses, rentals and royalties.

NOTE: The State of Louisiana does hereby reserve, and this lease shall be subject to, the imprescriptible right of surface use in the nature of a servitude in favor of the Department of Natural Resources, including its Offices and Commissions, for the sole purpose of implementing,

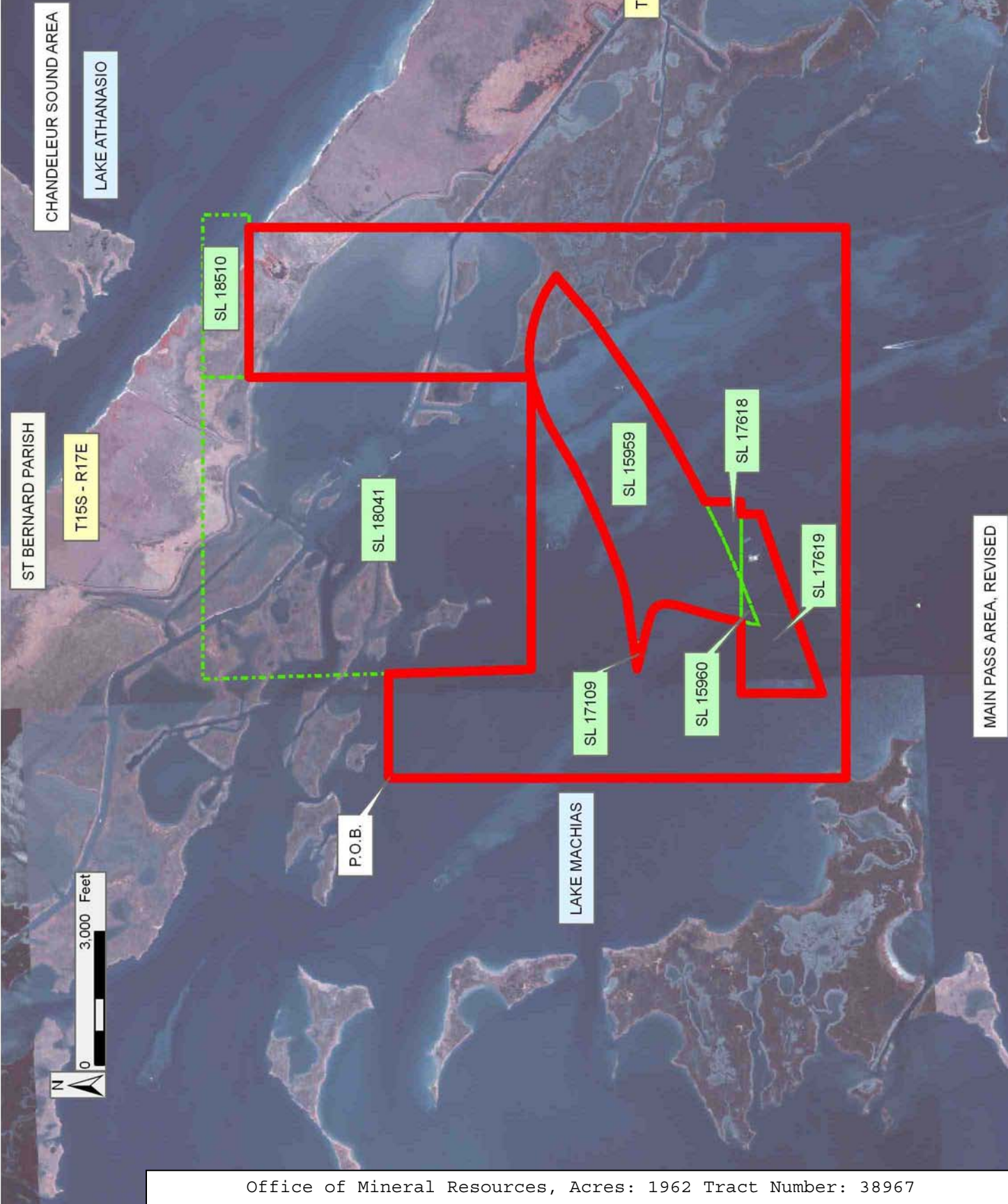
constructing, servicing and maintaining approved coastal zone management and/or restoration projects. Utilization of any and all rights derived under this lease by the mineral lessee, its agents, successors or assigns, shall not interfere with nor hinder the reasonable surface use by the Department of Natural Resources, its Offices or Commissions, as herein above reserved.

NOTE: The Department of Wildlife and Fisheries has designated certain areas in the coastal waters of the State of Louisiana as Oyster Seed Bed Areas. The exact location of those Seed Bed Areas must be obtained from the Department of Wildlife and Fisheries and any work done under a mineral lease from the State of Louisiana may necessarily be conducted in conformity with the rules and regulations promulgated by the said Department of Wildlife and Fisheries for Oyster Seed Bed Areas.

Applicant: KARE-SUE ENERGY, INC.

Bidder	Cash Payment	Price/ Acre	Rental	Oil	Gas	Other

Legend
07040033
Active_Leases
DOQQ2004



TRACT 38968 - Portion of Block 73, Chandeleur Sound Area, St. Bernard Parish, Louisiana

All of the lands now or formerly constituting the beds and bottoms of all water bodies of every nature and description the title of which vests in the State of Louisiana, together with all islands arising therein and other lands formed by accretion or by reliction, where allowed by law, excepting tax adjudicated lands, and not presently under mineral lease on April 11, 2007, situated in St. Bernard Parish, Louisiana, and more particularly described as follows: Beginning at a point having Coordinates of X = 2,560,856.00 and Y = 382,441.00; thence North 6,792.00 feet to a point having Coordinates of X = 2,560,856.00 and Y = 389,233.00; thence East 17,892.00 feet to a point having Coordinates of X = 2,578,748.00 and Y = 389,233.00; thence South 6,792.00 feet to a point having Coordinates of X = 2,578,748.00 and Y = 382,441.00; thence West 17,892.00 feet to the point of beginning, containing approximately **2,500 acres**, all as more particularly outlined on a plat on file in the Office of Mineral Resources, Department of Natural Resources. All bearings, distances and coordinates are based on Louisiana Coordinate System of 1927, (North or South Zone), where applicable.

NOTE: The above description of the Tract nominated for lease has been provided and corrected, where required, exclusively by the nomination party. Any mineral lease selected from this Tract and awarded by the Louisiana State Mineral Board shall be without warranty of any kind, either express, implied, or statutory, including, but not limited to, the implied warranties of merchantability and fitness for a particular purpose. Should the mineral lease awarded by the Louisiana State Mineral Board be subsequently modified, cancelled or abrogated due to the existence of conflicting leases, operating agreements, private claims or other future obligations or conditions which may affect all or any portion of the leased Tract, it shall not relieve the Lessee of the obligation to pay any bonus due thereon to the Louisiana State Mineral Board, nor shall the Louisiana State Mineral Board be obligated to refund any consideration paid by the Lessor prior to such modification, cancellation, or abrogation, including, but not limited to, bonuses, rentals and royalties.

NOTE: The State of Louisiana does hereby reserve, and this lease shall be subject to, the imprescriptible right of surface use in the nature of a servitude in favor of the Department of Natural Resources, including its Offices and Commissions, for the sole purpose of implementing, constructing, servicing and maintaining approved coastal zone management and/or restoration projects. Utilization of any and all rights derived under this lease by the mineral lessee, its agents, successors or assigns, shall not interfere with nor hinder the reasonable surface use by the Department of Natural Resources, its Offices or Commissions, as herein above reserved.

NOTE: The Department of Wildlife and Fisheries has designated certain areas in the coastal waters of the State of Louisiana as Oyster Seed Bed

Areas. The exact location of those Seed Bed Areas must be obtained from the Department of Wildlife and Fisheries and any work done under a mineral lease from the State of Louisiana may necessarily be conducted in conformity with the rules and regulations promulgated by the said Department of Wildlife and Fisheries for Oyster Seed Bed Areas.

Applicant: KARE-SUE ENERGY, INC.

Bidder	Cash Payment	Price/ Acre	Rental	Oil	Gas	Other

ST BERNARD PARISH

CHANDELEUR SOUND AREA

LAKE MACHIAS

MAIN PASS AREA, REVISED

LAKE CALLEBASSE

P.O.B.

LAKE COQUILLE

0 3,000 Feet

TRACT 38969 - Portion of Block 72, Chandeleur Sound Area, St. Bernard Parish, Louisiana

All of the lands now or formerly constituting the beds and bottoms of all water bodies of every nature and description the title of which vests in the State of Louisiana, together with all islands arising therein and other lands formed by accretion or by reliction, where allowed by law, excepting tax adjudicated lands, and not presently under mineral lease on April 11, 2007, situated in St. Bernard Parish, Louisiana, and more particularly described as follows: Beginning at a point on the West line of Block 72, Chandeleur Sound Area, having Coordinates of X = 2,591,100.00 and Y = 388,705.00; thence East 14,750.00 feet to a point on the East line of said Block 72, having Coordinates of X = 2,605,850.00 and Y = 388,705.00; thence South 7,375.00 feet to the Southeast corner of said Block 72, having Coordinates of X = 2,605,850.00 and Y = 381,330.00; thence West 14,750.00 feet along the South line of said Block 72, to its Southwest corner having Coordinates of X = 2,591,100.00 and Y = 381,330.00; thence North 7,375.00 feet to the point of beginning, containing approximately **827 acres**, all as more particularly outlined on a plat on file in the Office of Mineral Resources, Department of Natural Resources. All bearings, distances and coordinates are based on Louisiana Coordinate System of 1927, (North or South Zone), where applicable.

NOTE: The above description of the Tract nominated for lease has been provided and corrected, where required, exclusively by the nomination party. Any mineral lease selected from this Tract and awarded by the Louisiana State Mineral Board shall be without warranty of any kind, either express, implied, or statutory, including, but not limited to, the implied warranties of merchantability and fitness for a particular purpose. Should the mineral lease awarded by the Louisiana State Mineral Board be subsequently modified, cancelled or abrogated due to the existence of conflicting leases, operating agreements, private claims or other future obligations or conditions which may affect all or any portion of the leased Tract, it shall not relieve the Lessee of the obligation to pay any bonus due thereon to the Louisiana State Mineral Board, nor shall the Louisiana State Mineral Board be obligated to refund any consideration paid by the Lessor prior to such modification, cancellation, or abrogation, including, but not limited to, bonuses, rentals and royalties.

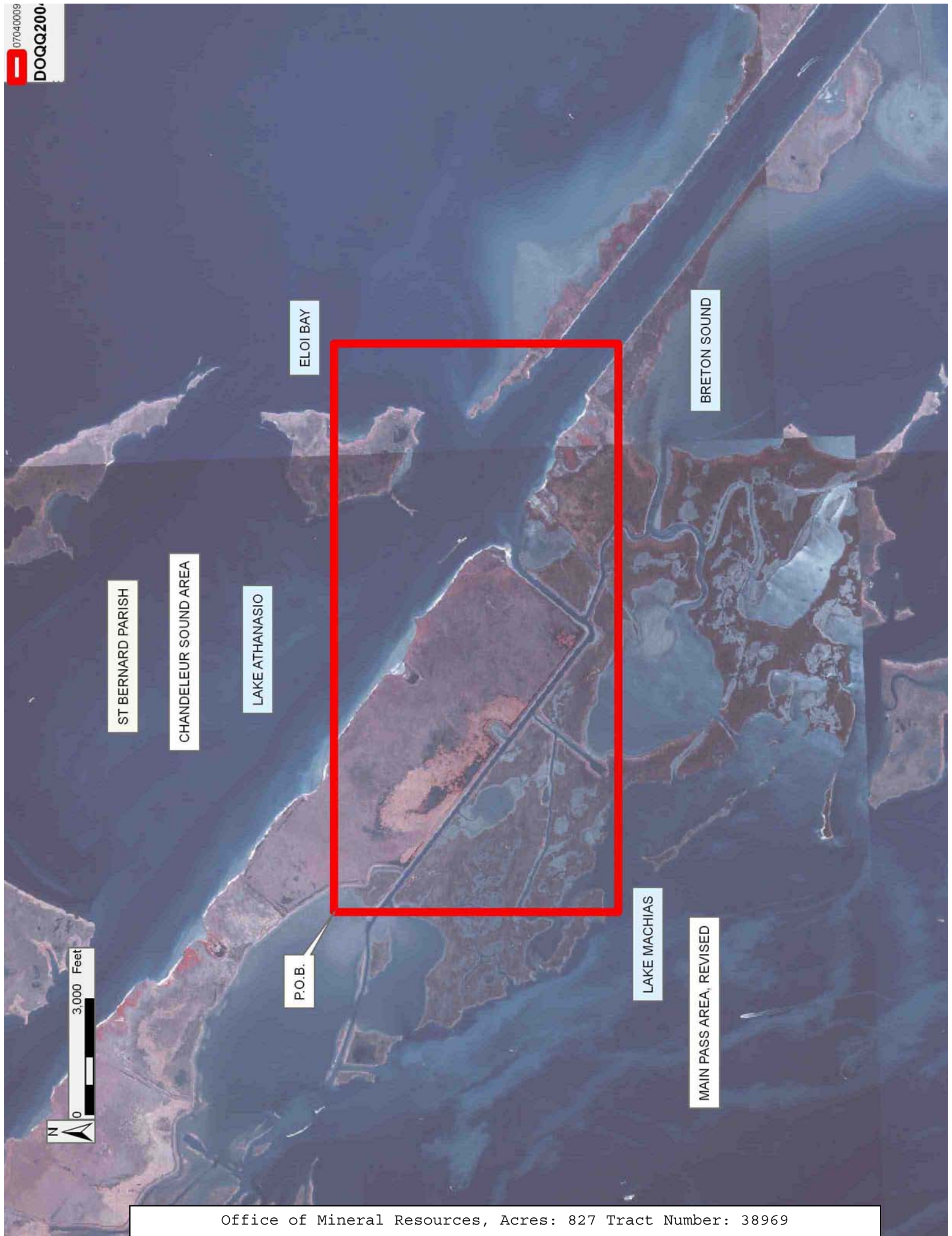
NOTE: The State of Louisiana does hereby reserve, and this lease shall be subject to, the imprescriptible right of surface use in the nature of a servitude in favor of the Department of Natural Resources, including its Offices and Commissions, for the sole purpose of implementing, constructing, servicing and maintaining approved coastal zone management and/or restoration projects. Utilization of any and all rights derived under this lease by the mineral lessee, its agents, successors or assigns, shall not interfere with nor hinder the reasonable surface use by the Department of Natural Resources, its Offices or Commissions, as herein above reserved.

NOTE: It appears, according to our records, that a portion of this Tract is located within the restrictive safety fairway area as set out by the Corps of Engineers, U.S. Army and/or the restrictive anchorage area as set out by the U.S. Coast Guard.

NOTE: The Department of Wildlife and Fisheries has designated certain areas in the coastal waters of the State of Louisiana as Oyster Seed Bed Areas. The exact location of those Seed Bed Areas must be obtained from the Department of Wildlife and Fisheries and any work done under a mineral lease from the State of Louisiana may necessarily be conducted in conformity with the rules and regulations promulgated by the said Department of Wildlife and Fisheries for Oyster Seed Bed Areas.

Applicant: KARE-SUE ENERGY, INC.

Bidder	Cash Payment	Price/ Acre	Rental	Oil	Gas	Other



TRACT 38970 - Plaquemines and St. Bernard Parishes, Louisiana

All of the lands now or formerly constituting the beds and bottoms of all water bodies of every nature and description the title of which vests in the State of Louisiana, together with all islands arising therein and other lands formed by accretion or by reliction, where allowed by law, excepting tax adjudicated lands, and not presently under mineral lease on April 11, 2007, situated in Plaquemines and St. Bernard Parishes, Louisiana, and more particularly described as follows: Beginning at a point having Coordinates of X = 2,526,691.00 and Y = 389,233.00; thence East 10,206.13 feet to the Northwest corner of State Lease No. 19075 and also being the Southwest corner of State Lease No. 19074 having Coordinates of X = 2,536,897.13 and Y = 389,233.00; thence along the boundary of State Lease No. 19075 the following courses: South 01 degrees 33 minutes 49 seconds East 2,590.93 feet and North 87 degrees 51 minutes 18 seconds East 6,000.38 feet its Southeast corner, also being the Southwest corner of State Lease No. 19077 having Coordinates of X = 2,542,964.00 and Y = 386,867.61; thence South 4,426.61 feet to a point having Coordinates of X = 2,542,964.00 and Y = 382,441.00; thence West 16,273.00 feet to a point having Coordinates of X = 2,526,691.00 and Y = 382,441.00; thence North 6,792.00 feet to the point of beginning, containing approximately **1,219 acres**, all as more particularly outlined on a plat on file in the Office of Mineral Resources, Department of Natural Resources. All bearings, distances and coordinates are based on Louisiana Coordinate System of 1927, (North or South Zone), where applicable.

NOTE: The above description of the Tract nominated for lease has been provided and corrected, where required, exclusively by the nomination party. Any mineral lease selected from this Tract and awarded by the Louisiana State Mineral Board shall be without warranty of any kind, either express, implied, or statutory, including, but not limited to, the implied warranties of merchantability and fitness for a particular purpose. Should the mineral lease awarded by the Louisiana State Mineral Board be subsequently modified, cancelled or abrogated due to the existence of conflicting leases, operating agreements, private claims or other future obligations or conditions which may affect all or any portion of the leased Tract, it shall not relieve the Lessee of the obligation to pay any bonus due thereon to the Louisiana State Mineral Board, nor shall the Louisiana State Mineral Board be obligated to refund any consideration paid by the Lessor prior to such modification, cancellation, or abrogation, including, but not limited to, bonuses, rentals and royalties.

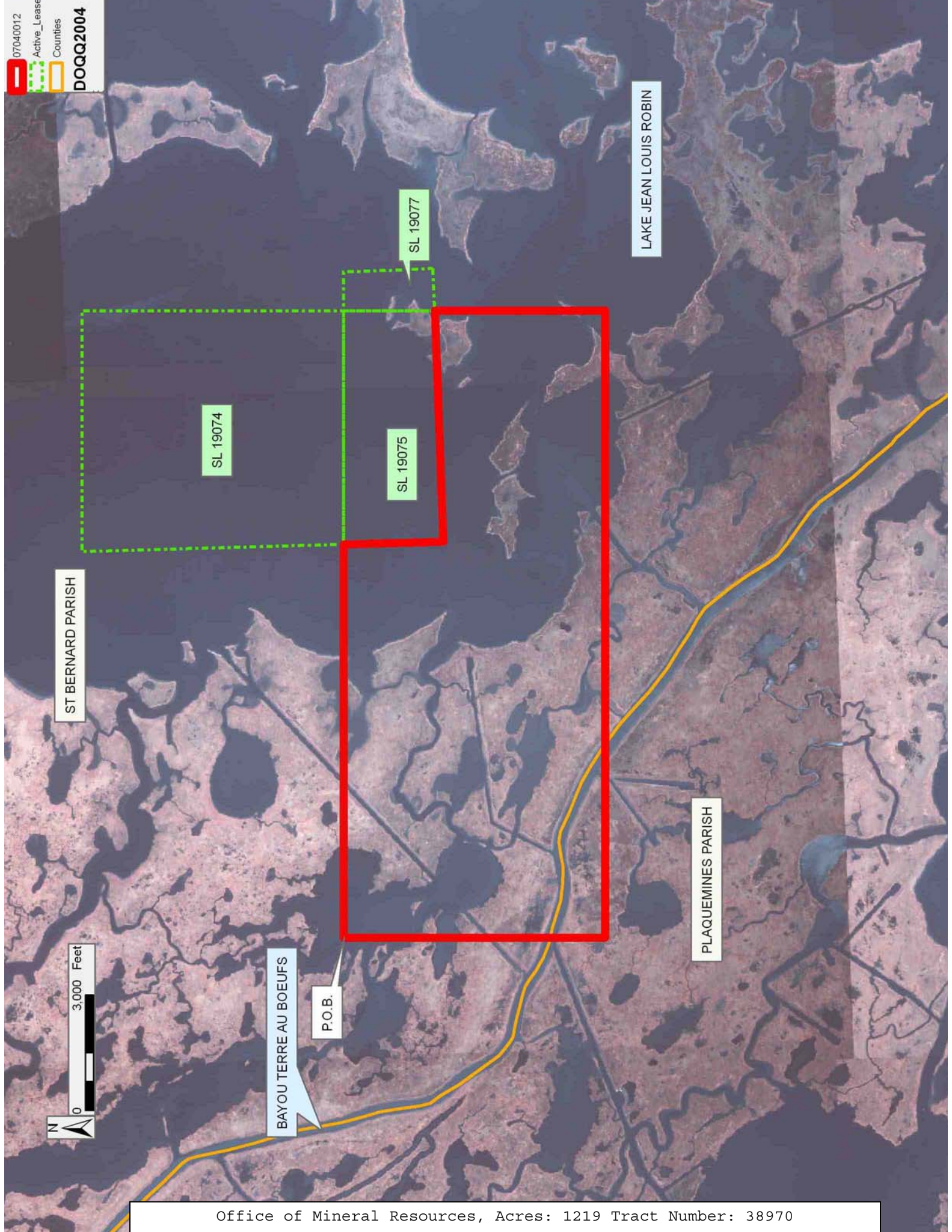
NOTE: The State of Louisiana does hereby reserve, and this lease shall be subject to, the imprescriptible right of surface use in the nature of a servitude in favor of the Department of Natural Resources, including its Offices and Commissions, for the sole purpose of implementing, constructing, servicing and maintaining approved coastal zone management and/or restoration projects. Utilization of any and all rights derived under this lease by the mineral lessee, its agents, successors or assigns, shall not interfere with nor hinder the reasonable surface use by the

Department of Natural Resources, its Offices or Commissions, as herein above reserved.

NOTE: The Department of Wildlife and Fisheries has designated certain areas in the coastal waters of the State of Louisiana as Oyster Seed Bed Areas. The exact location of those Seed Bed Areas must be obtained from the Department of Wildlife and Fisheries and any work done under a mineral lease from the State of Louisiana may necessarily be conducted in conformity with the rules and regulations promulgated by the said Department of Wildlife and Fisheries for Oyster Seed Bed Areas.

Applicant: KARE-SUE ENERGY, INC.

Bidder	Cash Payment	Price/ Acre	Rental	Oil	Gas	Other



TRACT 38971 - St. Bernard Parish, Louisiana

All of the lands now or formerly constituting the beds and bottoms of all water bodies of every nature and description the title of which vests in the State of Louisiana, together with all islands arising therein and other lands formed by accretion or by reliction, where allowed by law, excepting tax adjudicated lands, and not presently under mineral lease on April 11, 2007, situated in St. Bernard Parish, Louisiana, and more particularly described as follows: Beginning at the Southwest corner of State Lease No. 19077 having Coordinates of X = 2,542,964.00 and Y = 386,867.61; thence North 87 degrees 51 minutes 18 seconds East 1,106.48 feet to its Southeast corner and also being the Southwest corner of State Lease No. 18839 having Coordinates of X = 2,544,069.71 and Y = 386,909.03; thence North 87 degrees 51 minutes 18 seconds East 5,280.74 feet to its Southeast corner and also being the Southwest corner of State Lease No. 19076 having Coordinates of X = 2,549,346.75 and Y = 387,106.67; thence along the boundary of said State Lease No. 19076 the following courses: North 87 degrees 51 minutes 18 seconds East 6,120.18 feet and North 01 degrees 59 minutes 04 seconds West 1,898.40 feet to its Northeast corner having Coordinates of X = 2,555,396.90 and Y = 389,233.00; thence East 5,459.10 feet to a point having Coordinates of X = 2,560,856.00 and Y = 389,233.00; thence South 6,792.00 feet to a point having Coordinates of X = 2,560,856.00 and Y = 382,441.00; thence West 17,892.00 feet to a point having Coordinates of X = 2,542,964.00 and Y = 382,441.00; thence North 4,426.61 feet to the point of beginning, containing approximately **1,935 acres**, all as more particularly outlined on a plat on file in the Office of Mineral Resources, Department of Natural Resources. All bearings, distances and coordinates are based on Louisiana Coordinate System of 1927, (North or South Zone), where applicable.

NOTE: The above description of the Tract nominated for lease has been provided and corrected, where required, exclusively by the nomination party. Any mineral lease selected from this Tract and awarded by the Louisiana State Mineral Board shall be without warranty of any kind, either express, implied, or statutory, including, but not limited to, the implied warranties of merchantability and fitness for a particular purpose. Should the mineral lease awarded by the Louisiana State Mineral Board be subsequently modified, cancelled or abrogated due to the existence of conflicting leases, operating agreements, private claims or other future obligations or conditions which may affect all or any portion of the leased Tract, it shall not relieve the Lessee of the obligation to pay any bonus due thereon to the Louisiana State Mineral Board, nor shall the Louisiana State Mineral Board be obligated to refund any consideration paid by the Lessor prior to such modification, cancellation, or abrogation, including, but not limited to, bonuses, rentals and royalties.

NOTE: The State of Louisiana does hereby reserve, and this lease shall be subject to, the imprescriptible right of surface use in the nature of a servitude in favor of the Department of Natural Resources, including its Offices and Commissions, for the sole purpose of implementing,

constructing, servicing and maintaining approved coastal zone management and/or restoration projects. Utilization of any and all rights derived under this lease by the mineral lessee, its agents, successors or assigns, shall not interfere with nor hinder the reasonable surface use by the Department of Natural Resources, its Offices or Commissions, as herein above reserved.

NOTE: The Department of Wildlife and Fisheries has designated certain areas in the coastal waters of the State of Louisiana as Oyster Seed Bed Areas. The exact location of those Seed Bed Areas must be obtained from the Department of Wildlife and Fisheries and any work done under a mineral lease from the State of Louisiana may necessarily be conducted in conformity with the rules and regulations promulgated by the said Department of Wildlife and Fisheries for Oyster Seed Bed Areas.

Applicant: KARE-SUE ENERGY, INC.

Bidder	Cash Payment	Price/ Acre	Rental	Oil	Gas	Other

