

TRACT 38250 - Jefferson and Lafourche Parishes, Louisiana

All of the lands now or formerly constituting the beds and bottoms of all water bodies of every nature and description the title of which vests in the State of Louisiana, together with all islands arising therein and other lands formed by accretion or by reliction, where allowed by law, excepting tax adjudicated lands, and not presently under mineral lease and cross hatched on April 12, 2006, situated in Jefferson and Lafourche Parishes, Louisiana, and more particularly described as follows: Beginning at a point having Coordinates of X = 2,372,707.57 and Y = 305,328.94; thence East 6,818.27 feet to a point on the South boundary of the Northern portion of State Lease No. 2383, as amended, having Coordinates of X = 2,379,525.84 and Y = 305,328.95; thence along the South boundary of the said Northern portion of State Lease No. 2383, as amended, the following courses and distances: South 38 degrees 55 minutes 37 seconds East 165.76 feet to a point having Coordinates of X = 2,379,629.99 and Y = 305,200.00, South 44 degrees 01 minutes 44 seconds East 208.63 feet to a point having Coordinates of X = 2,379,774.99 and Y = 305,049.99, South 77 degrees 18 minutes 02 seconds East 363.90 feet to a point having Coordinates of X = 2,380,129.99 and Y = 304,969.99, South 78 degrees 01 minutes 26 seconds East 337.34 feet to a point having Coordinates of X = 2,380,459.99 and Y = 304,900.00, North 77 degrees 16 minutes 32 seconds East 317.81 feet to a point having Coordinates of X = 2,380,769.99 and Y = 304,970.00, North 68 degrees 33 minutes 08 seconds East 150.42 feet to a point having Coordinates of X = 2,380,910.00 and Y = 305,025.00, North 59 degrees 35 minutes 20 seconds East 266.69 feet to a point having Coordinates of X = 2,381,140.00 and Y = 305,160.00, North 59 degrees 48 minutes 59 seconds East 238.71 feet to a point having Coordinates of X = 2,381,346.34 and Y = 305,280.02, South 30 degrees 31 minutes 09 seconds West 406.30 feet to a point having Coordinates of X = 2,381,140.01 and Y = 304,930.01, South 35 degrees 45 minutes 14 seconds West 154.03 feet to a point having Coordinates of X = 2,381,050.01 and Y = 304,805.00, South 36 degrees 23 minutes 04 seconds West 236.01 feet to a point having Coordinates of X = 2,380,910.01 and Y = 304,615.00, North 85 degrees 45 minutes 49 seconds East 406.11 feet to a point having Coordinates of X = 2,381,315.01 and Y = 304,645.00, North 79 degrees 26 minutes 20 seconds East 300.08 feet to a point having Coordinates of X = 2,381,610.01 and Y = 304,700.00, North 77 degrees 46 minutes 30 seconds East 306.96 feet to a point having Coordinates of X = 2,381,910.01 and Y = 304,765.00, North 74 degrees 09 minutes 25 seconds East 384.61 feet to a point having Coordinates of X = 2,382,280.01 and Y = 304,870.00, North 67 degrees 14 minutes 56 seconds East 336.15 feet to a point having Coordinates of X = 2,382,590.00 and Y = 305,000.00, North 65 degrees 33 minutes 22 seconds East 362.49 feet to a point having Coordinates of X = 2,382,920.00 and Y = 305,150.00, North 57 degrees 08 minutes 39 seconds East 285.70 feet to a point having Coordinates of X = 2,383,160.00 and Y = 305,305.00, North 53 degrees 34 minutes 09 seconds East 261.01 feet to a point having Coordinates of X = 2,383,370.00 and Y = 305,460.00, North 46 degrees 21 minutes 50 seconds East 297.07 feet to a point having Coordinates of X = 2,383,585.00 and Y = 305,665.00 and North 39 degrees 25 minutes 40 seconds East 214.60 feet to

a point having Coordinates of X = 2,383,721.30 and Y = 305,830.77; thence South 7,287.59 feet to the Northeast corner of State Lease No. 18146 having Coordinates of X = 2,383,721.30 and Y = 298,543.18; thence West 1,850.00 feet along the North boundary of said State Lease No. 18146 to the Southeast corner of State Lease No. 18145 having Coordinates of X = 2,381,871.30 and Y = 298,543.18; thence North 1,942.65 feet along the East boundary of said State Lease No. 18145 to its Northeast corner on the South boundary of the Southern portion of State Lease No. 2383, as amended, having Coordinates of X = 2,381,871.30 and Y = 300,485.83; thence along the boundary of the said Southern portion of State Lease No. 2383, as amended, the following courses and distances: Southeasterly along an arc to the right with a radius of 10,000.00 feet and center at X = 2,379,781.44 and Y = 290,706.65 to a point having Coordinates of X = 2,382,138.00 and Y = 300,425.01, Southeasterly along an arc to the left with a radius of 4,025.00 feet and a center at X = 2,383,042.39 and Y = 304,347.09 to a point having Coordinates of X = 2,382,790.01 and Y = 300,330.01, Northeasterly along an arc to the left with a radius of 1,025.00 feet and a center at X = 2,382,885.38 and Y = 301,350.56 to a point having Coordinates of X = 2,383,215.01 and Y = 300,380.01, Northeasterly along an arc to the left with a radius of 500.00 feet and a center at X = 2,382,978.09 and Y = 300,820.32 to a point having Coordinates of X = 2,383,400.00 and Y = 300,552.01, Northeasterly along an arc to the left with a radius of 1,000.00 feet and a center at X = 2,382,427.36 and Y = 300,784.33 to a point having Coordinates of X = 2,383,425.00 and Y = 300,853.01, Northwesterly along an arc to the left with a radius of 2,150.00 feet and a center at X = 2,381,276.46 and Y = 300,773.94 to a point having Coordinates of X = 2,381,755.00 and Y = 302,870.00, Northwesterly along an arc to the left with a radius of 5,000.00 feet and a center at X = 2,380,592.98 and Y = 298,006.90 to a point having Coordinates of X = 2,380,455.00 and Y = 303,005.00, West 252.00 feet to a point having Coordinates of X = 2,380,203.00 and Y = 303,005.00, Northwesterly along an arc to the right with a radius of 500.00 feet and a center at X = 2,380,195.11 and Y = 303,504.94 to a point having Coordinates of X = 2,379,932.63 and Y = 303,079.37, Northwesterly along an arc to the left with a radius of 3,050.00 feet and a center at X = 2,377,818.39 and Y = 300,881.08 to a point having Coordinates of X = 2,378,283.07 and Y = 303,895.47, Northwesterly along an arc to the left with a radius of 3,050.00 feet and a center at X = 2,377,805.63 and Y = 300,883.07 to a point having Coordinates of X = 2,378,180.01 and Y = 303,910.01, Northwesterly along an arc to the left with a radius of 1,000.00 feet and a center at X = 2,378,015.76 and Y = 302,923.59 to a point having Coordinates of X = 2,378,002.32 and Y = 303,923.50, Southwesterly along an arc to the left with a radius of 1,750.00 feet and a center at X = 2,377,952.13 and Y = 302,174.22 to a point having Coordinates of X = 2,377,540.00 and Y = 303,875.00, Southwesterly along an arc to the left with a radius of 1,000.00 feet and a center at X = 2,377,849.59 and Y = 302,924.13 to a point having Coordinates of X = 2,377,015.00 and Y = 303,475.00, Southwesterly along an arc to the left with a radius of 2,025.00 feet and a center at X = 2,378,792.90 and Y =

302,505.62 to a point having Coordinates of X = 2,376,790.28 and Y = 302,205.35, Southeasterly along an arc to the left with a radius of 3,200.00 feet and a center at X = 2,379,990.25 and Y = 302,190.55 to a point having Coordinates of X = 2,376,850.01 and Y = 301,575.01 and Southeasterly along an arc to the left with a radius of 1,450.00 feet and a center at X = 2,378,230.27 and Y = 302,019.28 to a point having Coordinates of X = 2,377,815.01 and Y = 300,630.01; thence South 81 degrees 55 minutes 39 seconds West 1,782.17 feet to the Northeast corner of State Lease No. 18144 having Coordinates of X = 2,376,050.50 and Y = 300,379.75; thence West 3,342.94 feet along the North boundary of said State Lease No. 18144 to its Northwest corner having Coordinates of X = 2,372,707.57 and Y = 300,379.74; thence North 4,949.20 feet to the point of beginning, **LESS AND EXCEPT** any portion of State Lease No. 2383, as amended, which may lie within the above described tract, containing approximately **888.20 acres**, all as more particularly outlined on a plat on file in the Office of Mineral Resources, Department of Natural Resources. All bearings, distances and coordinates are based on Louisiana Coordinate System of 1927, (North or South Zone), where applicable.

NOTE: The above description of the Tract nominated for lease has been provided and corrected, where required, exclusively by the nomination party. Any mineral lease selected from this Tract and awarded by the Louisiana State Mineral Board shall be without warranty of any kind, either express, implied, or statutory, including, but not limited to, the implied warranties of merchantability and fitness for a particular purpose. Should the mineral lease awarded by the Louisiana State Mineral Board be subsequently modified, cancelled or abrogated due to the existence of conflicting leases, operating agreements, private claims or other future obligations or conditions which may affect all or any portion of the leased Tract, it shall not relieve the Lessee of the obligation to pay any bonus due thereon to the Louisiana State Mineral Board, nor shall the Louisiana State Mineral Board be obligated to refund any consideration paid by the Lessor prior to such modification, cancellation, or abrogation, including, but not limited to, bonuses, rentals and royalties.

NOTE: The State of Louisiana does hereby reserve, and this lease shall be subject to, the imprescriptible right of surface use in the nature of a servitude in favor of the Department of Natural Resources, including its Offices and Commissions, for the sole purpose of implementing, constructing, servicing and maintaining approved coastal zone management and/or restoration projects. Utilization of any and all rights derived under this lease by the mineral lessee, its agents, successors or assigns, shall not interfere with nor hinder the reasonable surface use by the Department of Natural Resources, its Offices or Commissions, as herein above reserved.

NOTE: The Department of Wildlife and Fisheries has designated certain areas in the coastal waters of the State of Louisiana as Oyster Seed Bed Areas. The exact location of those Seed Bed Areas must be obtained from

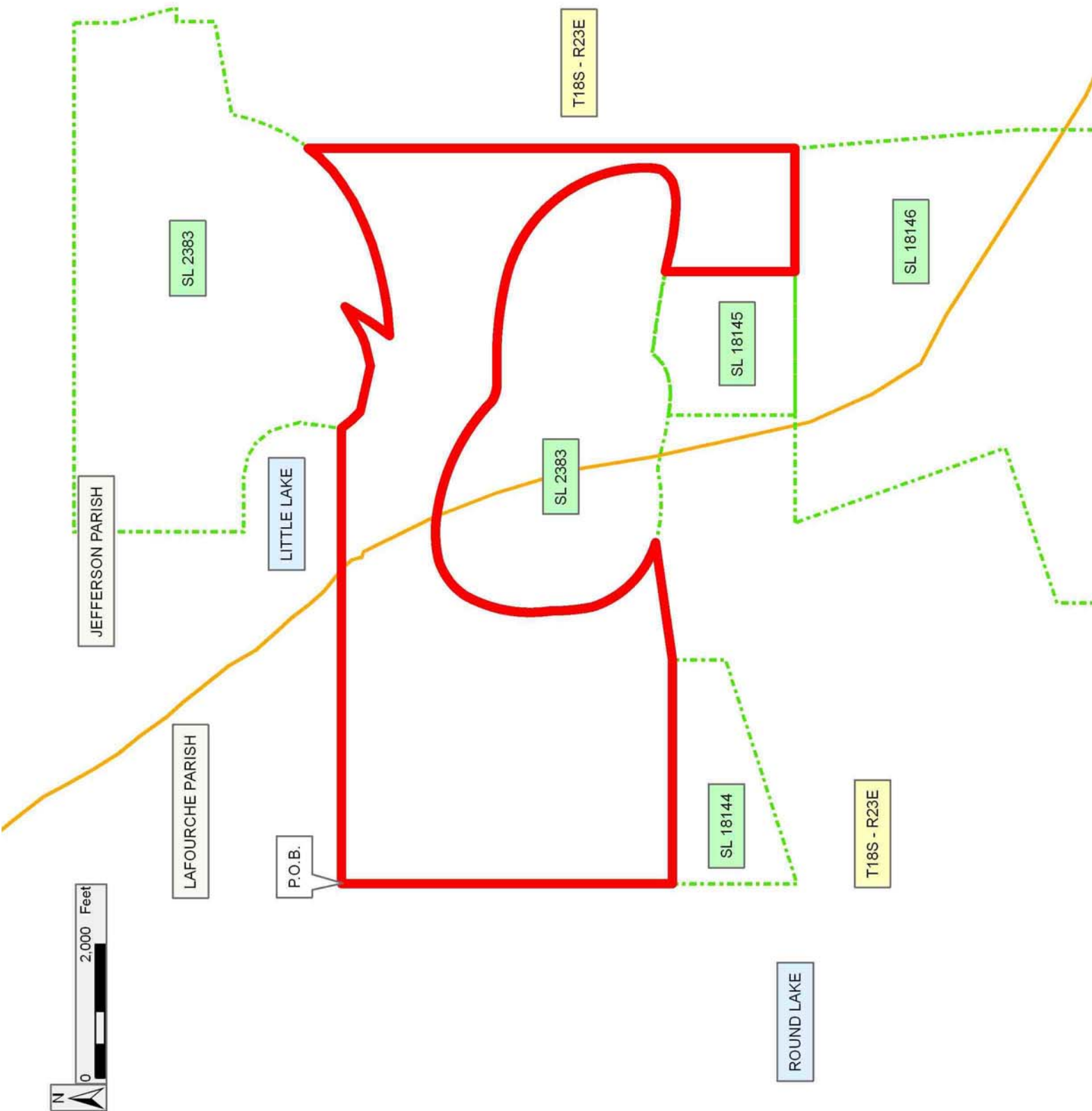
the Department of Wildlife and Fisheries and any work done under a mineral lease from the State of Louisiana may necessarily be conducted in conformity with the rules and regulations promulgated by the said Department of Wildlife and Fisheries for Oyster Seed Bed Areas.

Applicant: ENERGY PARTNERS, INC.

Bidder	Cash Payment	Price/ Acre	Rental	Oil	Gas	Other

Legend

- 06040046
- Active_Leases
- Counties



TRACT 38251 - Lafourche Parish, Louisiana

All of the lands now or formerly constituting the beds and bottoms of all water bodies of every nature and description the title of which vests in the State of Louisiana, together with all islands arising therein and other lands formed by accretion or by reliction, where allowed by law, excepting tax adjudicated lands, and not presently under mineral lease and cross hatched on April 12, 2006, situated in Lafourche Parish, Louisiana, and more particularly described as follows: Beginning at a point having Coordinates of X = 2,368,184.89 and Y = 293,706.00; thence North 01 degrees 25 minutes 26 seconds West 11,626.53 feet to a point having Coordinates of X = 2,367,895.98 and Y = 305,328.94; thence East 4,811.59 feet to a point having Coordinates of X = 2,372,707.57 and Y = 305,328.94; thence South 4,949.20 feet to the Northwest corner of State Lease No. 18144 having Coordinates of X = 2,372,707.57 and Y = 300,379.74; thence South 1,866.40 feet along the West boundary of said State Lease No. 18144 to its Southwest corner having Coordinates of X = 2,372,707.57 and Y = 298,513.34; thence North 72 degrees 18 minutes 32 seconds East 1,602.44 feet along the South boundary of said State Lease No. 18144 to a point having Coordinates of X = 2,374,234.23 and Y = 299,000.30; thence South 18 degrees 06 minutes 05 seconds East 2,498.59 feet to a point on the North boundary of State Lease No. 18100 having Coordinates of X = 2,375,010.54 and Y = 296,625.37; thence South 71 degrees 53 minutes 55 seconds West 1,761.73 feet along the North boundary of said State Lease No. 18100 to its Northwest corner having Coordinates of X = 2,373,336.00 and Y = 296,078.00; thence South 19 degrees 13 minutes 16 seconds East 2,512.03 feet along the West boundary of said State Lease No. 18100 to its Southwest corner having Coordinates of X = 2,374,163.00 and Y = 293,706.00; thence West 5,978.11 feet to the point of beginning, containing approximately **1,264 acres**, all as more particularly outlined on a plat on file in the Office of Mineral Resources, Department of Natural Resources. All bearings, distances and coordinates are based on Louisiana Coordinate System of 1927, (North or South Zone), where applicable.

NOTE: The above description of the Tract nominated for lease has been provided and corrected, where required, exclusively by the nomination party. Any mineral lease selected from this Tract and awarded by the Louisiana State Mineral Board shall be without warranty of any kind, either express, implied, or statutory, including, but not limited to, the implied warranties of merchantability and fitness for a particular purpose. Should the mineral lease awarded by the Louisiana State Mineral Board be subsequently modified, cancelled or abrogated due to the existence of conflicting leases, operating agreements, private claims or other future obligations or conditions which may affect all or any portion of the leased Tract, it shall not relieve the Lessee of the obligation to pay any bonus due thereon to the Louisiana State Mineral Board, nor shall the Louisiana State Mineral Board be obligated to refund any consideration paid by the Lessor prior to such modification, cancellation, or abrogation, including, but not limited to, bonuses, rentals and royalties.

NOTE: The State of Louisiana does hereby reserve, and this lease shall be subject to, the imprescriptible right of surface use in the nature of a servitude in favor of the Department of Natural Resources, including its Offices and Commissions, for the sole purpose of implementing, constructing, servicing and maintaining approved coastal zone management and/or restoration projects. Utilization of any and all rights derived under this lease by the mineral lessee, its agents, successors or assigns, shall not interfere with nor hinder the reasonable surface use by the Department of Natural Resources, its Offices or Commissions, as herein above reserved.

NOTE: The Department of Wildlife and Fisheries has designated certain areas in the coastal waters of the State of Louisiana as Oyster Seed Bed Areas. The exact location of those Seed Bed Areas must be obtained from the Department of Wildlife and Fisheries and any work done under a mineral lease from the State of Louisiana may necessarily be conducted in conformity with the rules and regulations promulgated by the said Department of Wildlife and Fisheries for Oyster Seed Bed Areas.

Applicant: ENERGY PARTNERS, INC.

Bidder	Cash Payment	Price/ Acre	Rental	Oil	Gas	Other



TRACT 38252 - Jefferson and Lafourche Parishes, Louisiana

All of the lands now or formerly constituting the beds and bottoms of all water bodies of every nature and description the title of which vests in the State of Louisiana, together with all islands arising therein and other lands formed by accretion or by reliction, where allowed by law, excepting tax adjudicated lands, and not presently under mineral lease and cross hatched on April 12, 2006, situated in Jefferson and Lafourche Parishes, Louisiana, and more particularly described as follows: Beginning at the Northeast corner of State Lease No. 18144 having Coordinates of X = 2,376,050.50 and Y = 300,379.75; thence North 81 degrees 55 minutes 39 seconds East 1,782.17 feet to a point on the South boundary of the Southern portion of State Lease No. 2383, as amended, having Coordinates of X = 2,377,815.01 and Y = 300,630.01; thence along the said South boundary of State Lease No. 2383, as amended, the following courses: Southeasterly along an arc to the left with a radius of 2,300.00 feet and a center at X = 2,378,420.01 and Y = 302,849.01 to a point having Coordinates of X = 2,378,907.77 and Y = 300,601.33; Southeasterly along an arc to the right with a radius of 10,000.00 feet and a center of X = 2,377,120.46 and Y = 290,762.35 to a point having Coordinates of X = 2,379,480.00 and Y = 300,479.99; Southeasterly along an arc to the left with a radius of 3,075.00 feet and a center at X = 2,380,129.10 and Y = 303,485.70 to the Northwest corner of State Lease No. 18145 having Coordinates of X = 2,379,721.30 and Y = 300,437.87; thence South 1,894.69 feet along the West boundary of said State Lease No. 18145 to its Southwest corner on the North boundary of State Lease No. 18146 having Coordinates of X = 2,379,721.30 and Y = 298,543.18; thence West 1,612.97 feet along the North boundary of said State Lease No. 18146 to its Northwest corner having Coordinates of X = 2,378,108.33 and Y = 298,543.18; thence South 19 degrees 31 minutes 34 seconds East 860.68 feet along the West boundary of said State Lease No. 18146 to the Northeast corner of State Lease No. 18099 having Coordinates of X = 2,378,396.00 and Y = 297,732.00; thence South 71 degrees 53 minutes 55 seconds West 2,661.73 feet along the North boundary of said State Lease No. 18099 to its Northwest corner, also being the Northeast corner of State Lease No. 18100 having Coordinates of X = 2,375,866.00 and Y = 296,905.00; thence South 71 degrees 53 minutes 55 seconds West 900.00 feet along the North boundary of said State Lease No. 18100 to a point having Coordinates of X = 2,375,010.54 and Y = 296,625.37; thence North 18 degrees 06 minutes 05 seconds West 2,498.59 feet to a point on the South boundary of State Lease No. 18144 having Coordinates of X = 2,374,234.23 and Y = 299,000.30; thence North 72 degrees 18 minutes 32 seconds East 1,906.78 feet along the said South boundary of State Lease No. 18144 to its Southeast corner having Coordinates of X = 2,376,050.84 and Y = 299,579.75; thence North 00 degrees 01 minutes 28 seconds West 800.00 feet along the East boundary of said State Lease No. 18144 to the point of beginning, **LESS AND EXCEPT** any portion of State Lease No. 2383, as amended, which may lie within the above described tract, containing approximately **314.75 acres**, all as more particularly outlined on a plat on file in the Office of Mineral Resources, Department of Natural Resources. All bearings, distances and

coordinates are based on Louisiana Coordinate System of 1927, (North or South Zone), where applicable.

NOTE: The above description of the Tract nominated for lease has been provided and corrected, where required, exclusively by the nomination party. Any mineral lease selected from this Tract and awarded by the Louisiana State Mineral Board shall be without warranty of any kind, either express, implied, or statutory, including, but not limited to, the implied warranties of merchantability and fitness for a particular purpose. Should the mineral lease awarded by the Louisiana State Mineral Board be subsequently modified, cancelled or abrogated due to the existence of conflicting leases, operating agreements, private claims or other future obligations or conditions which may affect all or any portion of the leased Tract, it shall not relieve the Lessee of the obligation to pay any bonus due thereon to the Louisiana State Mineral Board, nor shall the Louisiana State Mineral Board be obligated to refund any consideration paid by the Lessor prior to such modification, cancellation, or abrogation, including, but not limited to, bonuses, rentals and royalties.

NOTE: The State of Louisiana does hereby reserve, and this lease shall be subject to, the imprescriptible right of surface use in the nature of a servitude in favor of the Department of Natural Resources, including its Offices and Commissions, for the sole purpose of implementing, constructing, servicing and maintaining approved coastal zone management and/or restoration projects. Utilization of any and all rights derived under this lease by the mineral lessee, its agents, successors or assigns, shall not interfere with nor hinder the reasonable surface use by the Department of Natural Resources, its Offices or Commissions, as herein above reserved.

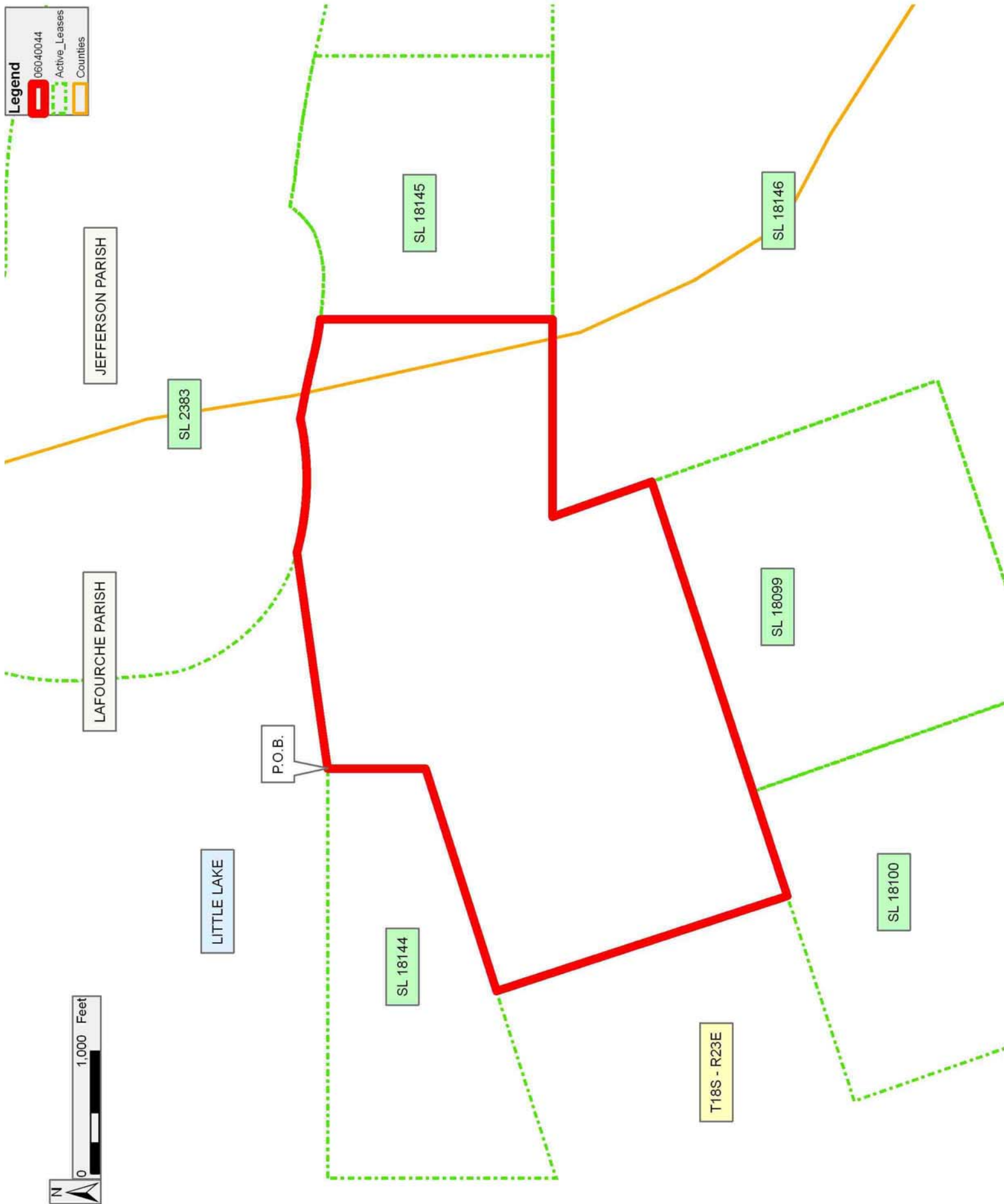
NOTE: The Department of Wildlife and Fisheries has designated certain areas in the coastal waters of the State of Louisiana as Oyster Seed Bed Areas. The exact location of those Seed Bed Areas must be obtained from the Department of Wildlife and Fisheries and any work done under a mineral lease from the State of Louisiana may necessarily be conducted in conformity with the rules and regulations promulgated by the said Department of Wildlife and Fisheries for Oyster Seed Bed Areas.

Bidder	Cash Payment	Price/ Acre	Rental	Oil	Gas	Other

Applicant: ENERGY PARTNERS, INC.

Legend

- 06040044
- Active_Leases
- Counties



TRACT 38253 - Jefferson and Lafourche Parishes, Louisiana

All of the lands now or formerly constituting the beds and bottoms of all water bodies of every nature and description the title of which vests in the State of Louisiana, together with all islands arising therein and other lands formed by accretion or by reliction, where allowed by law, excepting tax adjudicated lands, and not presently under mineral lease and cross hatched on April 12, 2006, situated in Jefferson and Lafourche Parishes, Louisiana, and more particularly described as follows: Beginning at the Southwest corner of State Lease No. 17780, also being a point on the East boundary of State Lease No. 18146, having Coordinates of X = 2,383,994.10 and Y = 295,248.61; thence East 5,900.10 feet along the South boundary of said State Lease No. 17780 to its Southeast corner having Coordinates of X = 2,389,894.20 and Y = 295,248.61; thence South 3,591.61 feet to a point on the North boundary of State Lease No. 18405 having Coordinates of X = 2,389,894.20 and Y = 291,657.00; thence West 450.20 feet along the said North boundary of State Lease No. 18405 to its Northwest corner having Coordinates of X = 2,389,444.00 and Y = 291,657.00; thence South 2,168.00 feet along the West boundary of said State Lease No. 18405 to its Southwest corner having Coordinates of X = 2,389,444.00 and Y = 289,489.00; thence East 450.20 feet along the South boundary of said State Lease No. 18405 to a point having Coordinates of X = 2,389,894.20 and Y = 289,489.00; thence South 1,107.94 feet to a point having Coordinates of X = 2,389,894.20 and Y = 288,381.06; thence South 88 degrees 18 minutes 23 seconds West 3,594.39 feet to the Northeast corner of State Lease No. 5259, as amended, having Coordinates of X = 2,386,301.38 and Y = 288,274.83; thence South 88 degrees 18 minutes 22 seconds West 2,139.00 feet to a point having Coordinates of X = 2,384,163.31 and Y = 288,211.60; thence North 01 degrees 41 minutes 38 seconds West 5,279.99 feet to a point having Coordinates of X = 2,384,007.24 and Y = 293,489.28; thence North 02 degrees 11 minutes 54 seconds West 342.57 feet to the Southeast corner of State Lease No. 18146 having Coordinates of X = 2,383,994.10 and Y = 293,831.60; thence North 1,417.01 feet along the East boundary of said State Lease No. 18146 to the point of beginning, containing approximately **908.49 acres**, all as more particularly outlined on a plat on file in the Office of Mineral Resources, Department of Natural Resources. All bearings, distances and coordinates are based on Louisiana Coordinate System of 1927, (North or South Zone), where applicable.

NOTE: The above description of the Tract nominated for lease has been provided and corrected, where required, exclusively by the nomination party. Any mineral lease selected from this Tract and awarded by the Louisiana State Mineral Board shall be without warranty of any kind, either express, implied, or statutory, including, but not limited to, the implied warranties of merchantability and fitness for a particular purpose. Should the mineral lease awarded by the Louisiana State Mineral Board be subsequently modified, cancelled or abrogated due to the existence of conflicting leases, operating agreements, private claims or other future obligations or conditions which may affect all or any portion

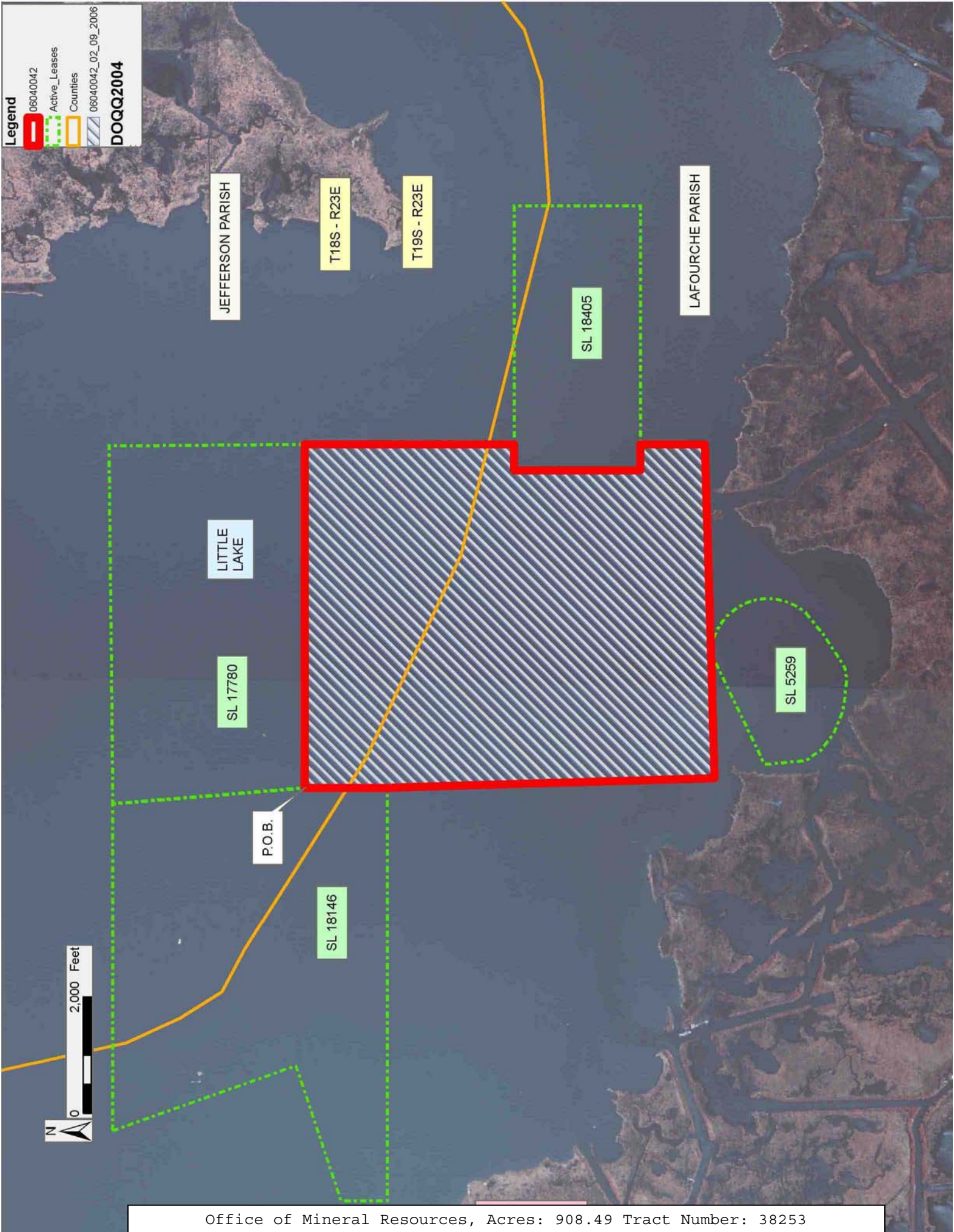
of the leased Tract, it shall not relieve the Lessee of the obligation to pay any bonus due thereon to the Louisiana State Mineral Board, nor shall the Louisiana State Mineral Board be obligated to refund any consideration paid by the Lessor prior to such modification, cancellation, or abrogation, including, but not limited to, bonuses, rentals and royalties.

NOTE: The State of Louisiana does hereby reserve, and this lease shall be subject to, the imprescriptible right of surface use in the nature of a servitude in favor of the Department of Natural Resources, including its Offices and Commissions, for the sole purpose of implementing, constructing, servicing and maintaining approved coastal zone management and/or restoration projects. Utilization of any and all rights derived under this lease by the mineral lessee, its agents, successors or assigns, shall not interfere with nor hinder the reasonable surface use by the Department of Natural Resources, its Offices or Commissions, as herein above reserved.

NOTE: The Department of Wildlife and Fisheries has designated certain areas in the coastal waters of the State of Louisiana as Oyster Seed Bed Areas. The exact location of those Seed Bed Areas must be obtained from the Department of Wildlife and Fisheries and any work done under a mineral lease from the State of Louisiana may necessarily be conducted in conformity with the rules and regulations promulgated by the said Department of Wildlife and Fisheries for Oyster Seed Bed Areas.

Applicant: ENERGY PARTNERS, INC.

Bidder	Cash Payment	Price/ Acre	Rental	Oil	Gas	Other



TRACT 38254 - Lafourche Parish, Louisiana

All of the lands now or formerly constituting the beds and bottoms of all water bodies of every nature and description the title of which vests in the State of Louisiana, together with all islands arising therein and other lands formed by accretion or by reliction, where allowed by law, excepting tax adjudicated lands, and not presently under mineral lease and cross hatched on April 12, 2006, situated in Lafourche Parish, Louisiana, and more particularly described as follows: Beginning at a point on the South boundary of State Lease No. 18100 having Coordinates of X = 2,376,047.97 and Y = 294,337.05; thence North 71 degrees 29 minutes 24 seconds East 680.22 feet along the said South boundary of State Lease No. 18100 to its Southeast corner, also being the Southwest corner of State Lease No. 18099, having Coordinates of X = 2,376,693.00 and Y = 294,553.00; thence North 71 degrees 29 minutes 24 seconds East 226.60 feet along the South boundary of said State Lease No. 18099 to a point being the most Southerly Northwest corner of State Lease No. 18146, having Coordinates of X = 2,376,907.88 and Y = 294,624.94; thence South 793.34 feet along the West boundary of said State lease No. 18146 to its Southwest corner having Coordinates of X = 2,376,907.88 and Y = 293,831.60; thence East 7,086.22 feet along the South boundary of said State Lease No. 18146 to its Southeast corner having Coordinates of X = 2,383,994.10 and Y = 293,831.60; thence South 02 degrees 11 minutes 54 seconds East 342.57 feet to a point having Coordinates of X = 2,384,007.24 and Y = 293,489.28; thence South 01 degrees 41 minutes 38 seconds East 5,279.99 feet to a point having Coordinates of X = 2,384,163.31 and Y = 288,211.60; thence South 88 degrees 18 minutes 22 seconds West 7,867.67 feet to a point having Coordinates of X = 2,376,299.08 and Y = 287,979.03; thence North 02 degrees 15 minutes 42 seconds West 1,018.89 feet to an intersection point on the Southern boundary of the KRG 9900 feet RB SU, created by Conservation Order No. 360-G-4, having Coordinates of X = 2,376,258.87 and Y = 288,997.13; thence along the Southern, Eastern, and Northern boundaries of said KRG 9900 feet RB SU the following courses: Northeasterly on an arc to the left with a radius of 820.28 feet and a center at X = 2,375,834.03 and Y = 289,698.82 to a point having Coordinates of X = 2,376,389.24 and Y = 289,095.00, Northeasterly on an arc to the right with a radius of 6,366.00 feet and a center at X = 2,379,484.46 and Y = 283,532.13 to a point having Coordinates of X = 2,378,279.30 and Y = 289,783.01, Southeasterly on an arc to the right with a radius of 4,244.00 feet and a center at X = 2,378,834.55 and Y = 285,575.49 to a point having Coordinates of X = 2,379,624.30 and Y = 289,745.36, South 80 degrees 22 minutes 04 seconds East 1,466.37 feet to a point having Coordinates of X = 2,381,070.00 and Y = 289,500.00, Northeasterly on an arc to the left with a radius of 1,190.00 feet and a center at X = 2,381,233.56 and Y = 290,678.71 to a point having Coordinates of X = 2,382,005.22 and Y = 289,772.81, Northeasterly on an arc to the left with a radius of 1,515.00 feet and a center at X = 2,380,997.33 and Y = 290,903.90 to a point having Coordinates of X = 2,382,510.00 and Y = 290,820.00, Northwesterly on an arc to the left with a radius of 2,240.00 feet and a center at X = 2,380,280.60 and Y =

290,602.37 to a point having Coordinates of X = 2,382,110.00 and Y = 291,895.00, Northwesterly on an arc to the left with a radius of 5,209.00 feet and a center at X = 2,378,091.72 and Y = 288,580.32 to a point having Coordinates of X = 2,380,410.00 and Y = 293,245.00, Northwesterly on an arc to the left with a radius of 2,560.00 feet and a center at X = 2,379,335.92 and Y = 290,921.22 to a point having Coordinates of X = 2,379,415.00 and Y = 293,480.00, Southwesterly on an arc to the left with a radius of 2,560.00 feet and a center at X = 2,379,637.24 and Y = 290,929.66 to a point having Coordinates of X = 2,378,425.27 and Y = 293,184.60, Southwesterly on an arc to the left with a radius of 4,982.00 feet and a center at X = 2,380,960.24 and Y = 288,895.75 to a point having Coordinates of X = 2,378,301.75 and Y = 293,109.15, Southwesterly on an arc to the left with a radius of 1,650.00 feet and a center at X = 2,379,826.22 and Y = 292,477.89 to a point having Coordinates of X = 2,378,250.00 and Y = 291,990.00, Southwesterly on an arc to the right with a radius of 600.00 feet and a center at X = 2,377,675.49 and Y = 291,816.98 to a point having Coordinates of X = 2,377,980.00 and Y = 291,300.00, South 61 degrees 55 minutes 39 seconds West 1,020.00 feet to a point having Coordinates of X = 2,377,080.00 and Y = 290,820.00 and Southwesterly on an arc to the left with a radius of 4,100.00 feet and a center at X = 2,378,855.06 and Y = 287,124.17 to a point having Coordinates of X = 2,376,209.14 and Y = 290,256.12; thence North 02 degrees 15 minutes 42 seconds West 4,084.11 feet to the point of beginning containing approximately **426 acres**, all as more particularly outlined on a plat on file in the Office of Mineral Resources, Department of Natural Resources. All bearings, distances and coordinates are based on Louisiana Coordinate System of 1927, (North or South Zone), where applicable.

NOTE: The above description of the Tract nominated for lease has been provided and corrected, where required, exclusively by the nomination party. Any mineral lease selected from this Tract and awarded by the Louisiana State Mineral Board shall be without warranty of any kind, either express, implied, or statutory, including, but not limited to, the implied warranties of merchantability and fitness for a particular purpose. Should the mineral lease awarded by the Louisiana State Mineral Board be subsequently modified, cancelled or abrogated due to the existence of conflicting leases, operating agreements, private claims or other future obligations or conditions which may affect all or any portion of the leased Tract, it shall not relieve the Lessee of the obligation to pay any bonus due thereon to the Louisiana State Mineral Board, nor shall the Louisiana State Mineral Board be obligated to refund any consideration paid by the Lessor prior to such modification, cancellation, or abrogation, including, but not limited to, bonuses, rentals and royalties.

NOTE: The State of Louisiana does hereby reserve, and this lease shall be subject to, the imprescriptible right of surface use in the nature of a servitude in favor of the Department of Natural Resources, including its Offices and Commissions, for the sole purpose of implementing, constructing, servicing and maintaining approved coastal zone management

and/or restoration projects. Utilization of any and all rights derived under this lease by the mineral lessee, its agents, successors or assigns, shall not interfere with nor hinder the reasonable surface use by the Department of Natural Resources, its Offices or Commissions, as herein above reserved.

NOTE: The Department of Wildlife and Fisheries has designated certain areas in the coastal waters of the State of Louisiana as Oyster Seed Bed Areas. The exact location of those Seed Bed Areas must be obtained from the Department of Wildlife and Fisheries and any work done under a mineral lease from the State of Louisiana may necessarily be conducted in conformity with the rules and regulations promulgated by the said Department of Wildlife and Fisheries for Oyster Seed Bed Areas.

Applicant: ENERGY PARTNERS, INC.

Bidder	Cash Payment	Price/ Acre	Rental	Oil	Gas	Other

Legend

- 06040043
- Active_Leases
- Counties
- 06040043_02_23_06
- DOQQ2004**

