

TRACT 38230 - St. Charles Parish, Louisiana

All of the lands now or formerly constituting the beds and bottoms of all water bodies of every nature and description the title of which vests in the State of Louisiana, together with all islands arising therein and other lands formed by accretion or by reliction, where allowed by law, excepting tax adjudicated lands, and not presently under mineral lease and cross hatched on April 12, 2006, situated in St. Charles Parish, Louisiana, and more particularly described as follows: Beginning at the Northwest corner of State Lease No. 17708 having Coordinates of X = 2,356,750.00 and Y = 406,400.00; thence South 1,409.00 feet along the West boundary of said State Lease No. 17708 to a point having Coordinates of X = 2,356,750.00 and Y = 404,991.00; thence West 1,817.00 feet to a point having Coordinates of X = 2,354,933.00 and Y = 404,991.00; thence North 6,610.00 feet to a point having Coordinates of X = 2,354,933.00 and Y = 411,601.00; thence East 7,977.09 feet to a point having Coordinates of X = 2,362,910.09 and Y = 411,601.00; thence South 23 degrees 19 minutes 56 seconds West 5,664.19 feet to a point on the North boundary of said State Lease No. 17708 having Coordinates of X = 2,360,666.73 and Y = 406,400.00; thence West 3,916.73 feet along the North boundary of said State Lease No. 17708 to the point of beginning, containing approximately **877.30 acres**, all as more particularly outlined on a plat on file in the Office of Mineral Resources, Department of Natural Resources. All bearings, distances and coordinates are based on Louisiana Coordinate System of 1927, (North or South Zone), where applicable.

NOTE: The above description of the Tract nominated for lease has been provided and corrected, where required, exclusively by the nomination party. Any mineral lease selected from this Tract and awarded by the Louisiana State Mineral Board shall be without warranty of any kind, either express, implied, or statutory, including, but not limited to, the implied warranties of merchantability and fitness for a particular purpose. Should the mineral lease awarded by the Louisiana State Mineral Board be subsequently modified, cancelled or abrogated due to the existence of conflicting leases, operating agreements, private claims or other future obligations or conditions which may affect all or any portion of the leased Tract, it shall not relieve the Lessee of the obligation to pay any bonus due thereon to the Louisiana State Mineral Board, nor shall the Louisiana State Mineral Board be obligated to refund any consideration paid by the Lessor prior to such modification, cancellation, or abrogation, including, but not limited to, bonuses, rentals and royalties.

NOTE: The State of Louisiana does hereby reserve, and this lease shall be subject to, the imprescriptible right of surface use in the nature of a servitude in favor of the Department of Natural Resources, including its Offices and Commissions, for the sole purpose of implementing, constructing, servicing and maintaining approved coastal zone management and/or restoration projects. Utilization of any and all rights derived under this lease by the mineral lessee, its agents, successors or assigns, shall not interfere with nor hinder the reasonable surface use by the

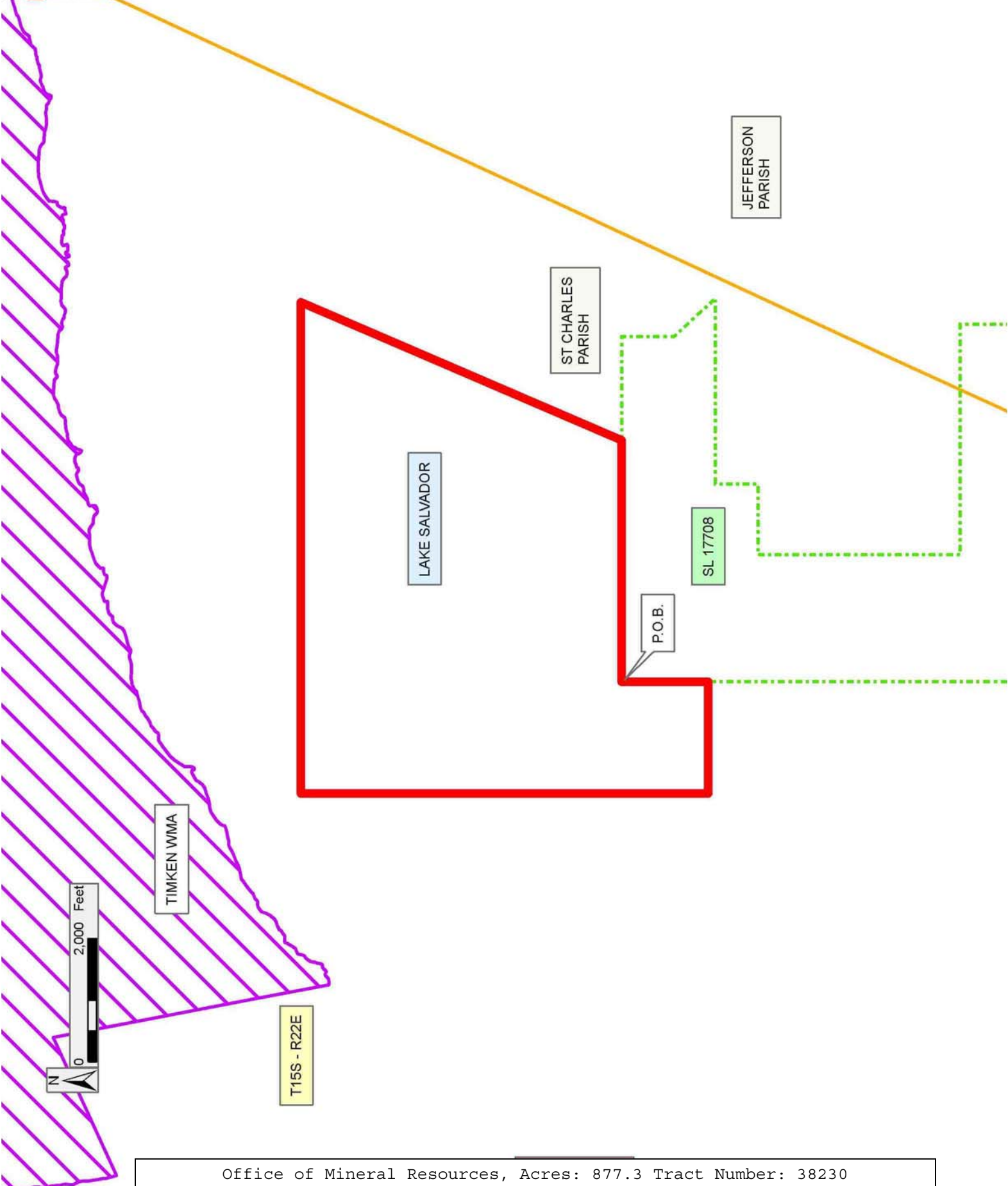
Department of Natural Resources, its Offices or Commissions, as herein above reserved.

Applicant: ROBERT A SCHROEDER, INC.

Bidder	Cash Payment	Price/Acre	Rental	Oil	Gas	Other

Legend

- 06040010
- Wildlife
- Active_Leases
- Counties



TRACT 38231 - Jefferson and St. Charles Parishes, Louisiana

All of the lands now or formerly constituting the beds and bottoms of all water bodies of every nature and description the title of which vests in the State of Louisiana, together with all islands arising therein and other lands formed by accretion or by reliction, where allowed by law, excepting tax adjudicated lands, and not presently under mineral lease and cross hatched on April 12, 2006, situated in Jefferson and St. Charles Parishes, Louisiana, and more particularly described as follows: Beginning at the Northernmost Northeast corner of State Lease No. 17708 having Coordinates of X = 2,362,351.29 and Y = 406,400.00; thence West 1,684.56 feet along the North boundary of said State Lease No. 17708 to a point having Coordinates of X = 2,360,666.73 and Y = 406,400.00; thence North 23 degrees 19 minutes 56 seconds East 5,664.19 feet to a point having Coordinates of X = 2,362,910.09 and Y = 411,601.00; thence East 7,585.80 feet to a point having Coordinates of X = 2,370,495.88 and Y = 411,601.00; thence South 7,980.33 feet to a point on the North boundary of State Lease No. 18138 having Coordinates of X = 2,370,495.88 and Y = 403,620.67; thence West 6,307.96 feet along the North boundary of said State Lease No. 18138 to a point on the East boundary of State Lease No. 17140 having Coordinates of X = 2,364,187.92 and Y = 403,620.67; thence North 44 degrees 00 minutes 00 seconds West 1,743.95 feet along the East boundary of said State Lease No. 17140 to the Easternmost corner of said State Lease No. 17708 having Coordinates of X = 2,362,976.47 and Y = 404,875.16; thence along the boundary of said State Lease No. 17708 the following courses and distances: North 42 degrees 42 minutes 15 seconds West 921.80 feet to a point having Coordinates of X = 2,362,351.29 and Y = 405,552.56 and North 847.44 feet to the point of beginning, containing approximately **1,519.01 acres**, all as more particularly outlined on a plat on file in the Office of Mineral Resources, Department of Natural Resources. All bearings, distances and coordinates are based on Louisiana Coordinate System of 1927, (North or South Zone), where applicable.

NOTE: The above description of the Tract nominated for lease has been provided and corrected, where required, exclusively by the nomination party. Any mineral lease selected from this Tract and awarded by the Louisiana State Mineral Board shall be without warranty of any kind, either express, implied, or statutory, including, but not limited to, the implied warranties of merchantability and fitness for a particular purpose. Should the mineral lease awarded by the Louisiana State Mineral Board be subsequently modified, cancelled or abrogated due to the existence of conflicting leases, operating agreements, private claims or other future obligations or conditions which may affect all or any portion of the leased Tract, it shall not relieve the Lessee of the obligation to pay any bonus due thereon to the Louisiana State Mineral Board, nor shall the Louisiana State Mineral Board be obligated to refund any consideration paid by the Lessor prior to such modification, cancellation, or abrogation, including, but not limited to, bonuses, rentals and royalties.

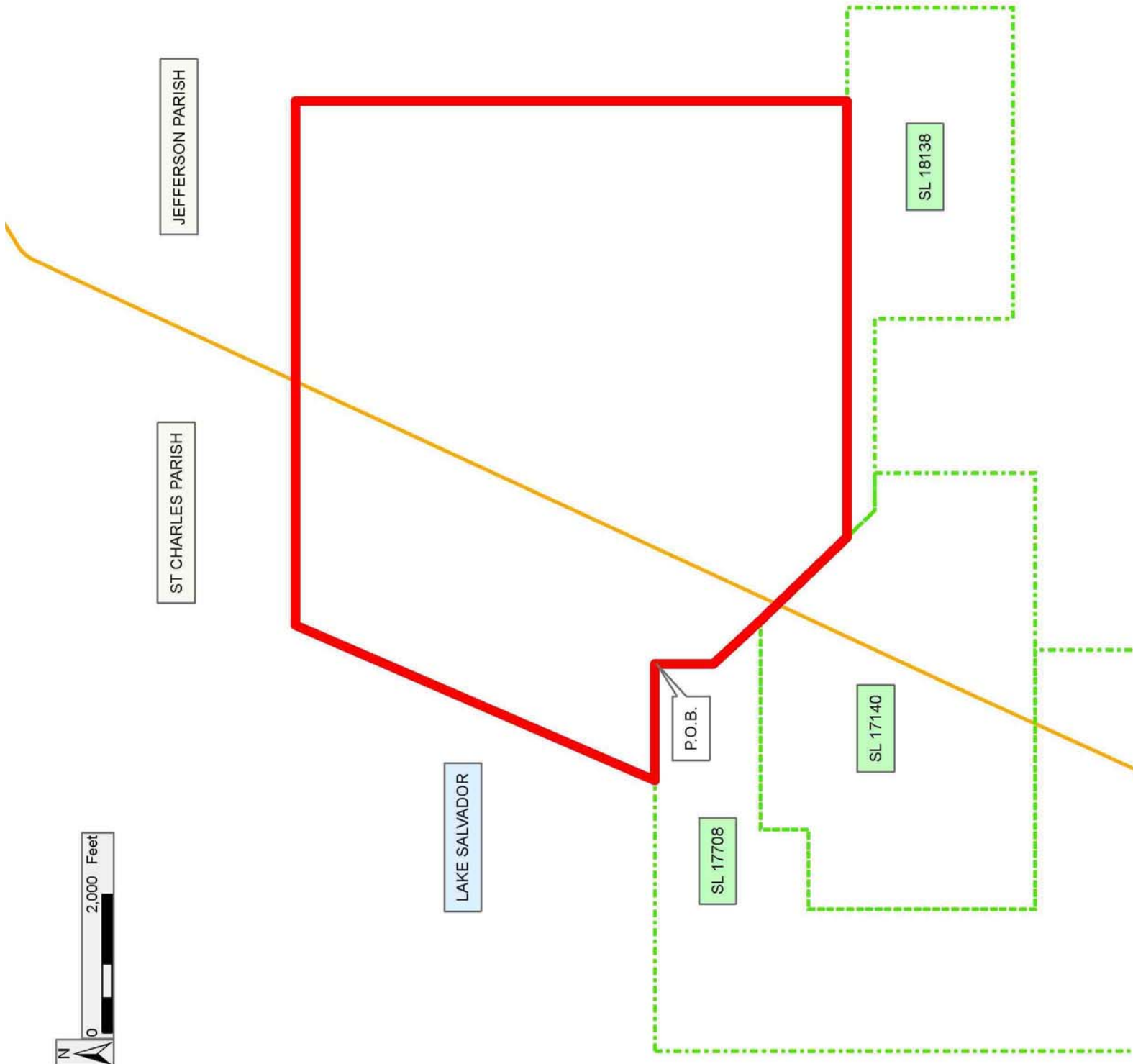
NOTE: The State of Louisiana does hereby reserve, and this lease shall be subject to, the imprescriptible right of surface use in the nature of a servitude in favor of the Department of Natural Resources, including its Offices and Commissions, for the sole purpose of implementing, constructing, servicing and maintaining approved coastal zone management and/or restoration projects. Utilization of any and all rights derived under this lease by the mineral lessee, its agents, successors or assigns, shall not interfere with nor hinder the reasonable surface use by the Department of Natural Resources, its Offices or Commissions, as herein above reserved.

Applicant: ROBERT A SCHROEDER, INC.

Bidder	Cash Payment	Price/Acre	Rental	Oil	Gas	Other

Legend

- 06040013
- Active_Leases
- Counties



TRACT 38232 - Jefferson Parish, Louisiana

All of the lands now or formerly constituting the beds and bottoms of all water bodies of every nature and description the title of which vests in the State of Louisiana, together with all islands arising therein and other lands formed by accretion or by reliction, where allowed by law, excepting tax adjudicated lands, and not presently under mineral lease and cross hatched on April 12, 2006, situated in Jefferson Parish, Louisiana, and more particularly described as follows: Beginning at the Northeast corner of State Lease No. 18138 having Coordinates of X = 2,371,845.00 and Y = 403,620.67; thence West 1,349.12 feet along the North boundary of said State Lease No. 18138 to a point having Coordinates of X = 2,370,495.88 and Y = 403,620.67; thence North 7,980.33 feet to a point having Coordinates of X = 2,370,495.88 and Y = 411,601.00; thence East 2,074.12 feet to a point having Coordinates of X = 2,372,570.00 and Y = 411,601.00; thence South 3,342.00 feet to a point having Coordinates of X = 2,372,570.00 and Y = 408,259.00; thence East 1,591.00 feet to a point having Coordinates of X = 2,374,161.00 and Y = 408,259.00; thence South 4,638.33 feet to a point having Coordinates of X = 2,374,161.00 and Y = 403,620.67; thence West 2,316.00 feet to the point of beginning, containing approximately **549.40 acres**, all as more particularly outlined on a plat on file in the Office of Mineral Resources, Department of Natural Resources. All bearings, distances and coordinates are based on Louisiana Coordinate System of 1927, (North or South Zone), where applicable.

NOTE: The above description of the Tract nominated for lease has been provided and corrected, where required, exclusively by the nomination party. Any mineral lease selected from this Tract and awarded by the Louisiana State Mineral Board shall be without warranty of any kind, either express, implied, or statutory, including, but not limited to, the implied warranties of merchantability and fitness for a particular purpose. Should the mineral lease awarded by the Louisiana State Mineral Board be subsequently modified, cancelled or abrogated due to the existence of conflicting leases, operating agreements, private claims or other future obligations or conditions which may affect all or any portion of the leased Tract, it shall not relieve the Lessee of the obligation to pay any bonus due thereon to the Louisiana State Mineral Board, nor shall the Louisiana State Mineral Board be obligated to refund any consideration paid by the Lessor prior to such modification, cancellation, or abrogation, including, but not limited to, bonuses, rentals and royalties.

NOTE: The State of Louisiana does hereby reserve, and this lease shall be subject to, the imprescriptible right of surface use in the nature of a servitude in favor of the Department of Natural Resources, including its Offices and Commissions, for the sole purpose of implementing, constructing, servicing and maintaining approved coastal zone management and/or restoration projects. Utilization of any and all rights derived under this lease by the mineral lessee, its agents, successors or assigns, shall not interfere with nor hinder the reasonable surface use by the

Department of Natural Resources, its Offices or Commissions, as herein above reserved.

Applicant: ROBERT A SCHROEDER, INC.

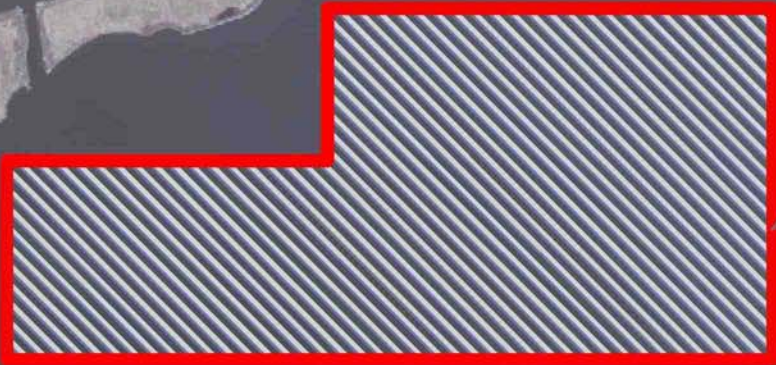
Bidder	Cash Payment	Price/Acre	Rental	Oil	Gas	Other

Legend

-  06040011
-  Active_Leases
-  Counties
-  06040011_02_15_06

DOQQ2004

T15S - R23E



P.O.B.

SL 18138

JEFFERSON PARISH

LAKE SALVADOR

ST CHARLES PARISH



TRACT 38233 - Jefferson Parish, Louisiana

All of the lands now or formerly constituting the beds and bottoms of all water bodies of every nature and description the title of which vests in the State of Louisiana, together with all islands arising therein and other lands formed by accretion or by reliction, where allowed by law, excepting tax adjudicated lands, and not presently under mineral lease and cross hatched on April 12, 2006, situated in Jefferson Parish, Louisiana, and more particularly described as follows: Beginning at the Southernmost Northeast corner of State Lease No. 17140 also being a point on a South boundary of State Lease No. 18138 having Coordinates of X = 2,365,114.19 and Y = 403,220.67; thence along the boundary of said State Lease No. 18138 the following courses and distances: East 2,230.81 feet to a point having Coordinates of X = 2,367,345.00 and Y = 403,220.67, South 2,000.00 feet to a point having Coordinates of X = 2,367,345.00 and Y = 401,220.67 and East 2,314.00 feet to a point having Coordinates of X = 2,369,659.00 and Y = 401,220.67; thence South 4,725.67 feet to a point having Coordinates of X = 2,369,659.00 and Y = 396,495.00; thence West 4,480.00 feet to a point having Coordinates of X = 2,365,179.00 and Y = 396,495.00; thence North 1,081.30 feet to a point having Coordinates of X = 2,365,179.00 and Y = 397,576.30; thence West 2,629.00 feet to a point on an East boundary of State Lease No. 17708 having Coordinates of X = 2,362,550.00 and Y = 397,576.30; thence North 3,328.98 feet along said East boundary of said State Lease No. 17708 to a point on the South boundary of said State Lease No. 17140 having Coordinates of X = 2,362,550.00 and Y = 400,905.28; thence along the boundary of said State Lease No. 17140 the following courses and distances: East 2,564.19 feet to a point having Coordinates of X = 2,365,114.19 and Y = 400,905.28 and North 2,315.39 feet to the point of beginning, containing approximately **789.83 acres**, all as more particularly outlined on a plat on file in the Office of Mineral Resources, Department of Natural Resources. All bearings, distances and coordinates are based on Louisiana Coordinate System of 1927, (North or South Zone), where applicable.

NOTE: The above description of the Tract nominated for lease has been provided and corrected, where required, exclusively by the nomination party. Any mineral lease selected from this Tract and awarded by the Louisiana State Mineral Board shall be without warranty of any kind, either express, implied, or statutory, including, but not limited to, the implied warranties of merchantability and fitness for a particular purpose. Should the mineral lease awarded by the Louisiana State Mineral Board be subsequently modified, cancelled or abrogated due to the existence of conflicting leases, operating agreements, private claims or other future obligations or conditions which may affect all or any portion of the leased Tract, it shall not relieve the Lessee of the obligation to pay any bonus due thereon to the Louisiana State Mineral Board, nor shall the Louisiana State Mineral Board be obligated to refund any consideration paid by the Lessor prior to such modification, cancellation, or abrogation, including, but not limited to, bonuses, rentals and royalties.

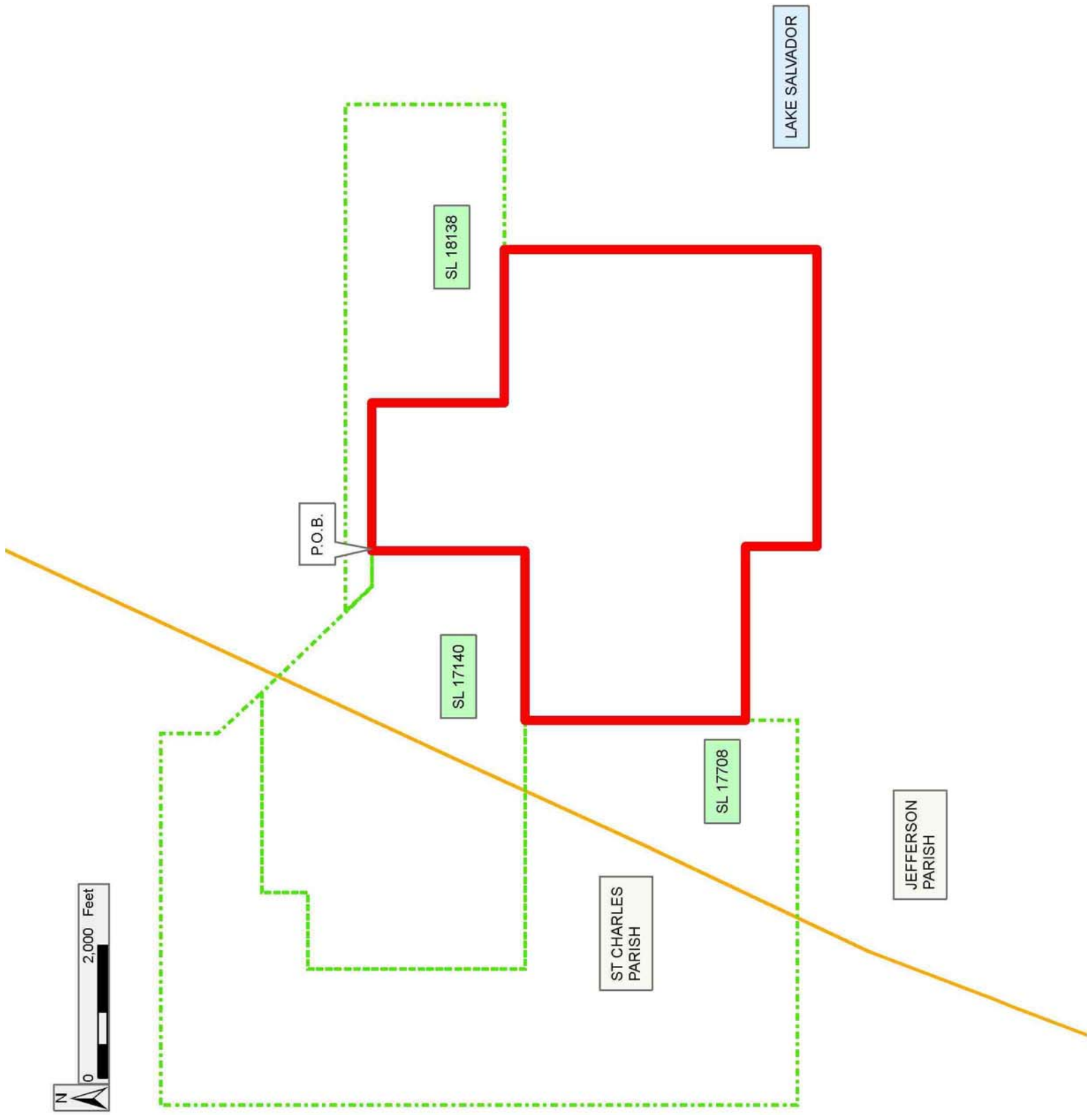
NOTE: The State of Louisiana does hereby reserve, and this lease shall be subject to, the imprescriptible right of surface use in the nature of a servitude in favor of the Department of Natural Resources, including its Offices and Commissions, for the sole purpose of implementing, constructing, servicing and maintaining approved coastal zone management and/or restoration projects. Utilization of any and all rights derived under this lease by the mineral lessee, its agents, successors or assigns, shall not interfere with nor hinder the reasonable surface use by the Department of Natural Resources, its Offices or Commissions, as herein above reserved.

Applicant: ROBERT A SCHROEDER, INC.

Bidder	Cash Payment	Price/Acre	Rental	Oil	Gas	Other

Legend

- 06040012
- Active_Leases
- Counties



TRACT 38234 - Jefferson and St. Charles Parishes, Louisiana

All of the lands now or formerly constituting the beds and bottoms of all water bodies of every nature and description the title of which vests in the State of Louisiana, together with all islands arising therein and other lands formed by accretion or by reliction, where allowed by law, excepting tax adjudicated lands, and not presently under mineral lease and cross hatched on April 12, 2006, situated in Jefferson and St. Charles Parishes, Louisiana, and more particularly described as follows: Beginning at the Southwest corner of State Lease No. 17708 having Coordinates of X = 2,356,750.00 and Y = 396,800.00; thence East 2,836.00 feet along the South boundary of said State Lease No. 17708 to a point having Coordinates of X = 2,359,586.00 and Y = 396,800.00; thence South 7,568.00 feet to a point having Coordinates of X = 2,359,586.00 and Y = 389,232.00; thence West 9,842.00 feet to a point having Coordinates of X = 2,349,744.00 and Y = 389,232.00; thence North 7,568.00 feet to a point having Coordinates of X = 2,349,744.00 and Y = 396,800.00; thence East 7,006.00 feet to the point of beginning, containing approximately **1,709.92 acres**, all as more particularly outlined on a plat on file in the Office of Mineral Resources, Department of Natural Resources. All bearings, distances and coordinates are based on Louisiana Coordinate System of 1927, (North or South Zone), where applicable.

NOTE: The above description of the Tract nominated for lease has been provided and corrected, where required, exclusively by the nomination party. Any mineral lease selected from this Tract and awarded by the Louisiana State Mineral Board shall be without warranty of any kind, either express, implied, or statutory, including, but not limited to, the implied warranties of merchantability and fitness for a particular purpose. Should the mineral lease awarded by the Louisiana State Mineral Board be subsequently modified, cancelled or abrogated due to the existence of conflicting leases, operating agreements, private claims or other future obligations or conditions which may affect all or any portion of the leased Tract, it shall not relieve the Lessee of the obligation to pay any bonus due thereon to the Louisiana State Mineral Board, nor shall the Louisiana State Mineral Board be obligated to refund any consideration paid by the Lessor prior to such modification, cancellation, or abrogation, including, but not limited to, bonuses, rentals and royalties.

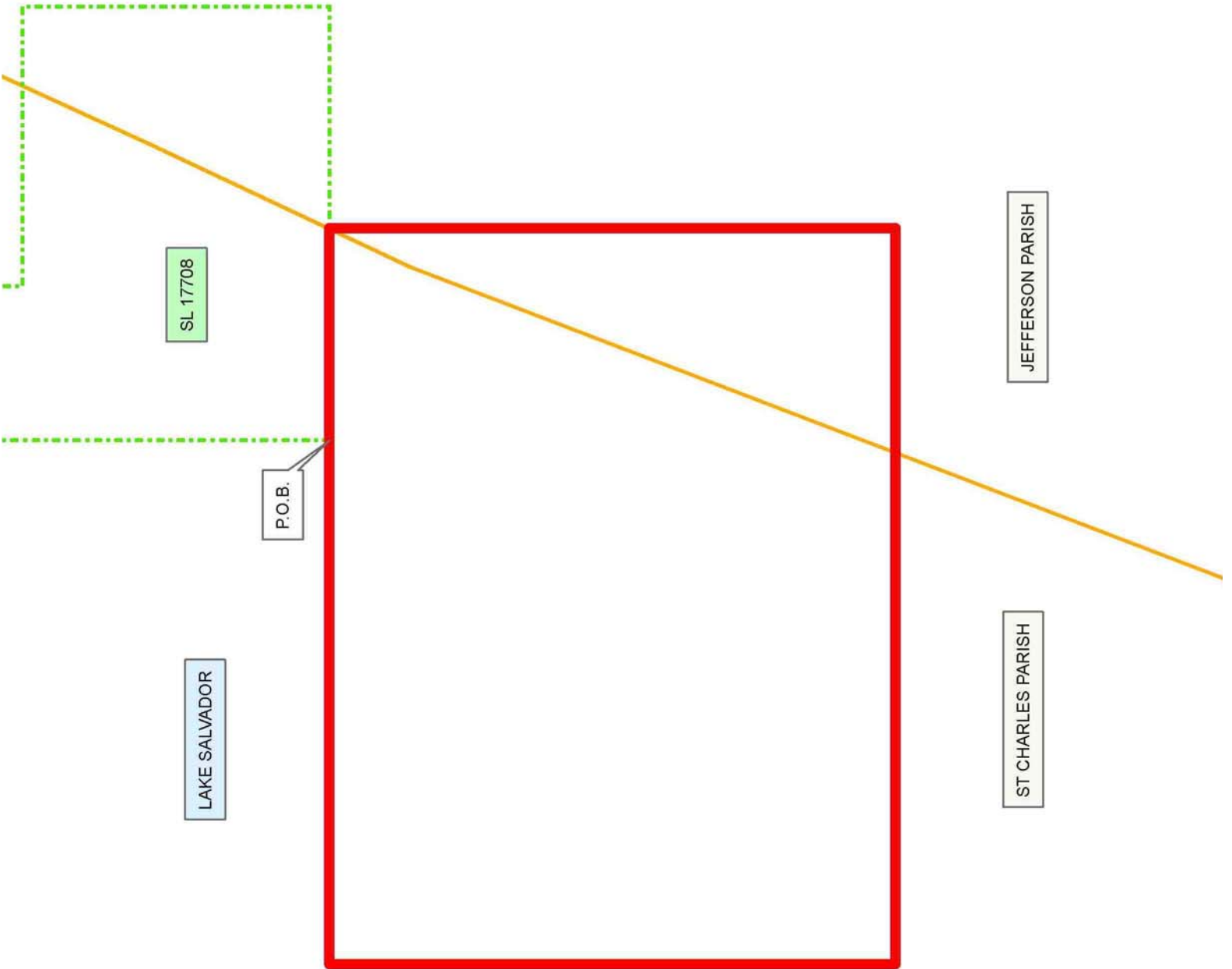
NOTE: The State of Louisiana does hereby reserve, and this lease shall be subject to, the imprescriptible right of surface use in the nature of a servitude in favor of the Department of Natural Resources, including its Offices and Commissions, for the sole purpose of implementing, constructing, servicing and maintaining approved coastal zone management and/or restoration projects. Utilization of any and all rights derived under this lease by the mineral lessee, its agents, successors or assigns, shall not interfere with nor hinder the reasonable surface use by the Department of Natural Resources, its Offices or Commissions, as herein above reserved.

Applicant: ROBERT A SCHROEDER, INC.

Bidder	Cash Payment	Price/Acre	Rental	Oil	Gas	Other

Legend

- 06040014
- Active_Leases
- Counties



TRACT 38235 - Cameron Parish, Louisiana

All of the lands now or formerly constituting the beds and bottoms of all water bodies of every nature and description the title of which vests in the State of Louisiana, together with all islands arising therein and other lands formed by accretion or by reliction, where allowed by law, excepting tax adjudicated lands, and not presently under mineral lease and cross hatched on April 12, 2006, situated in Cameron Parish, Louisiana, and more particularly described as follows: Beginning at a point having Coordinates of X = 1,486,472.00 and Y = 407,696.00; thence South 7,000.00 feet to a point having Coordinates of X = 1,486,472.00 and Y = 400,696.00; thence West 4,604.40 feet to the Southeast corner of State Lease No. 18726 having Coordinates of X = 1,481,867.60 and Y = 400,696.00; thence North 4,516.52 feet along the East line of said State Lease No. 18726 to its Northeast corner and the Southeast corner of State Lease No. 16874, as amended having Coordinates of X = 1,481,867.60 and Y = 405,212.52; thence North 01 degrees 16 minutes 41 seconds East 2,484.10 feet along the East line of said State Lease No. 16874 to a point having Coordinates of X = 1,481,923.01 and Y = 407,696.00; thence East 4,548.99 feet to the point of beginning, containing approximately **68 acres**, all as more particularly outlined on a plat on file in the Office of Mineral Resources, Department of Natural Resources. All bearings, distances and coordinates are based on Louisiana Coordinate System of 1927, (North or South Zone), where applicable.

NOTE: The above description of the Tract nominated for lease has been provided and corrected, where required, exclusively by the nomination party. Any mineral lease selected from this Tract and awarded by the Louisiana State Mineral Board shall be without warranty of any kind, either express, implied, or statutory, including, but not limited to, the implied warranties of merchantability and fitness for a particular purpose. Should the mineral lease awarded by the Louisiana State Mineral Board be subsequently modified, cancelled or abrogated due to the existence of conflicting leases, operating agreements, private claims or other future obligations or conditions which may affect all or any portion of the leased Tract, it shall not relieve the Lessee of the obligation to pay any bonus due thereon to the Louisiana State Mineral Board, nor shall the Louisiana State Mineral Board be obligated to refund any consideration paid by the Lessor prior to such modification, cancellation, or abrogation, including, but not limited to, bonuses, rentals and royalties.

NOTE: The State of Louisiana does hereby reserve, and this lease shall be subject to, the imprescriptible right of surface use in the nature of a servitude in favor of the Department of Natural Resources, including its Offices and Commissions, for the sole purpose of implementing, constructing, servicing and maintaining approved coastal zone management and/or restoration projects. Utilization of any and all rights derived under this lease by the mineral lessee, its agents, successors or assigns, shall not interfere with nor hinder the reasonable surface use by the

Department of Natural Resources, its Offices or Commissions, as herein above reserved.

Applicant: WOODLAND PETROLEUM CORPORATION

Bidder	Cash Payment	Price/Acre	Rental	Oil	Gas	Other

Legend

-  06040035
-  Active_Leases
-  Counties
-  06040035_02_09_06

DOQQ2004

CAMERON PARISH

T15S - R6W

MERMENTAU RIVER

P.O.B.



SL 16874

SL 18726



TRACT 38236 - Cameron Parish, Louisiana

All of the lands now or formerly constituting the beds and bottoms of all water bodies of every nature and description the title of which vests in the State of Louisiana, together with all islands arising therein and other lands formed by accretion or by reliction, where allowed by law, excepting tax adjudicated lands, and not presently under mineral lease and cross hatched on April 12, 2006, situated in Cameron Parish, Louisiana, and more particularly described as follows: Beginning at a point having Coordinates of X = 1,486,472.00 and Y = 407,696.00; thence East 4,600.00 feet to a point having Coordinates of X = 1,491,072.00 and Y = 407,696.00; thence South 7,000.00 feet to a point having Coordinates of X = 1,491,072.00 and Y = 400,696.00; thence West 4,600.00 feet to a point having Coordinates of X = 1,486,472.00 and Y = 400,696.00; thence North 7,000.00 feet to the point of beginning, containing approximately **71 acres**, all as more particularly outlined on a plat on file in the Office of Mineral Resources, Department of Natural Resources. All bearings, distances and coordinates are based on Louisiana Coordinate System of 1927, (North or South Zone), where applicable.

NOTE: The above description of the Tract nominated for lease has been provided and corrected, where required, exclusively by the nomination party. Any mineral lease selected from this Tract and awarded by the Louisiana State Mineral Board shall be without warranty of any kind, either express, implied, or statutory, including, but not limited to, the implied warranties of merchantability and fitness for a particular purpose. Should the mineral lease awarded by the Louisiana State Mineral Board be subsequently modified, cancelled or abrogated due to the existence of conflicting leases, operating agreements, private claims or other future obligations or conditions which may affect all or any portion of the leased Tract, it shall not relieve the Lessee of the obligation to pay any bonus due thereon to the Louisiana State Mineral Board, nor shall the Louisiana State Mineral Board be obligated to refund any consideration paid by the Lessor prior to such modification, cancellation, or abrogation, including, but not limited to, bonuses, rentals and royalties.

NOTE: The State of Louisiana does hereby reserve, and this lease shall be subject to, the imprescriptible right of surface use in the nature of a servitude in favor of the Department of Natural Resources, including its Offices and Commissions, for the sole purpose of implementing, constructing, servicing and maintaining approved coastal zone management and/or restoration projects. Utilization of any and all rights derived under this lease by the mineral lessee, its agents, successors or assigns, shall not interfere with nor hinder the reasonable surface use by the Department of Natural Resources, its Offices or Commissions, as herein above reserved.

Applicant: WOODLAND PETROLEUM CORPORATION

Bidder	Cash Payment	Price/Acre	Rental	Oil	Gas	Other

Legend

-  060-40036
-  Counties
-  060-40036_02_09_2006

DOQQ2004

CAMERON PARISH

MERMENTAU RIVER

P.O.B.

T15S - R6W



TRACT 38237 - Cameron Parish, Louisiana

All of the lands now or formerly constituting the beds and bottoms of all water bodies of every nature and description the title of which vests in the State of Louisiana, together with all islands arising therein and other lands formed by accretion or by reliction, where allowed by law, excepting tax adjudicated lands, and not presently under mineral lease and cross hatched on April 12, 2006, situated in Cameron Parish, Louisiana, and more particularly described as follows: Beginning at a point having Coordinates of X = 1,495,672.00 and Y = 407,696.00; thence South 7,000.00 feet to a point having Coordinates of X = 1,495,672.00 and Y = 400,696.00; thence West 4,600.00 feet to a point having Coordinates of X = 1,491,072.00 and Y = 400,696.00; thence North 7,000.00 feet to a point having Coordinates of X = 1,491,072.00 and Y = 407,696.00; thence East 4,600.00 feet to the point of beginning, containing approximately **69 acres**, all as more particularly outlined on a plat on file in the Office of Mineral Resources, Department of Natural Resources. All bearings, distances and coordinates are based on Louisiana Coordinate System of 1927, (North or South Zone), where applicable.

NOTE: The above description of the Tract nominated for lease has been provided and corrected, where required, exclusively by the nomination party. Any mineral lease selected from this Tract and awarded by the Louisiana State Mineral Board shall be without warranty of any kind, either express, implied, or statutory, including, but not limited to, the implied warranties of merchantability and fitness for a particular purpose. Should the mineral lease awarded by the Louisiana State Mineral Board be subsequently modified, cancelled or abrogated due to the existence of conflicting leases, operating agreements, private claims or other future obligations or conditions which may affect all or any portion of the leased Tract, it shall not relieve the Lessee of the obligation to pay any bonus due thereon to the Louisiana State Mineral Board, nor shall the Louisiana State Mineral Board be obligated to refund any consideration paid by the Lessor prior to such modification, cancellation, or abrogation, including, but not limited to, bonuses, rentals and royalties.

NOTE: The State of Louisiana does hereby reserve, and this lease shall be subject to, the imprescriptible right of surface use in the nature of a servitude in favor of the Department of Natural Resources, including its Offices and Commissions, for the sole purpose of implementing, constructing, servicing and maintaining approved coastal zone management and/or restoration projects. Utilization of any and all rights derived under this lease by the mineral lessee, its agents, successors or assigns, shall not interfere with nor hinder the reasonable surface use by the Department of Natural Resources, its Offices or Commissions, as herein above reserved.

Applicant: WOODLAND PETROLEUM CORPORATION

Bidder	Cash Payment	Price/Acre	Rental	Oil	Gas	Other

Legend

- 060-40037
- Counties
- 060-40037_02_09_2006
- DOQQ2004**

CAMERON PARISH

P.O.B.



T15S - R5W

T15S - R6W

MERMENTAU RIVER



TRACT 38238 - Cameron Parish, Louisiana

All of the lands now or formerly constituting the beds and bottoms of all water bodies of every nature and description the title of which vests in the State of Louisiana, together with all islands arising therein and other lands formed by accretion or by reliction, where allowed by law, excepting tax adjudicated lands, and not presently under mineral lease and cross hatched on April 12, 2006, situated in Cameron Parish, Louisiana, and more particularly described as follows: Beginning at a point having Coordinates of X = 1,495,672.00 and Y = 407,696.00; thence East 4,600.00 feet to a point having Coordinates of X = 1,500,272.00 and Y = 407,696.00; thence South 7,000.00 feet to a point having Coordinates of X = 1,500,272.00 and Y = 400,696.00; thence West 4,600.00 feet to a point having Coordinates of X = 1,495,672.00 and Y = 400,696.00; thence North 7,000.00 feet to the point of beginning, containing approximately **125 acres**, all as more particularly outlined on a plat on file in the Office of Mineral Resources, Department of Natural Resources. All bearings, distances and coordinates are based on Louisiana Coordinate System of 1927, (North or South Zone), where applicable.

NOTE: The above description of the Tract nominated for lease has been provided and corrected, where required, exclusively by the nomination party. Any mineral lease selected from this Tract and awarded by the Louisiana State Mineral Board shall be without warranty of any kind, either express, implied, or statutory, including, but not limited to, the implied warranties of merchantability and fitness for a particular purpose. Should the mineral lease awarded by the Louisiana State Mineral Board be subsequently modified, cancelled or abrogated due to the existence of conflicting leases, operating agreements, private claims or other future obligations or conditions which may affect all or any portion of the leased Tract, it shall not relieve the Lessee of the obligation to pay any bonus due thereon to the Louisiana State Mineral Board, nor shall the Louisiana State Mineral Board be obligated to refund any consideration paid by the Lessor prior to such modification, cancellation, or abrogation, including, but not limited to, bonuses, rentals and royalties.

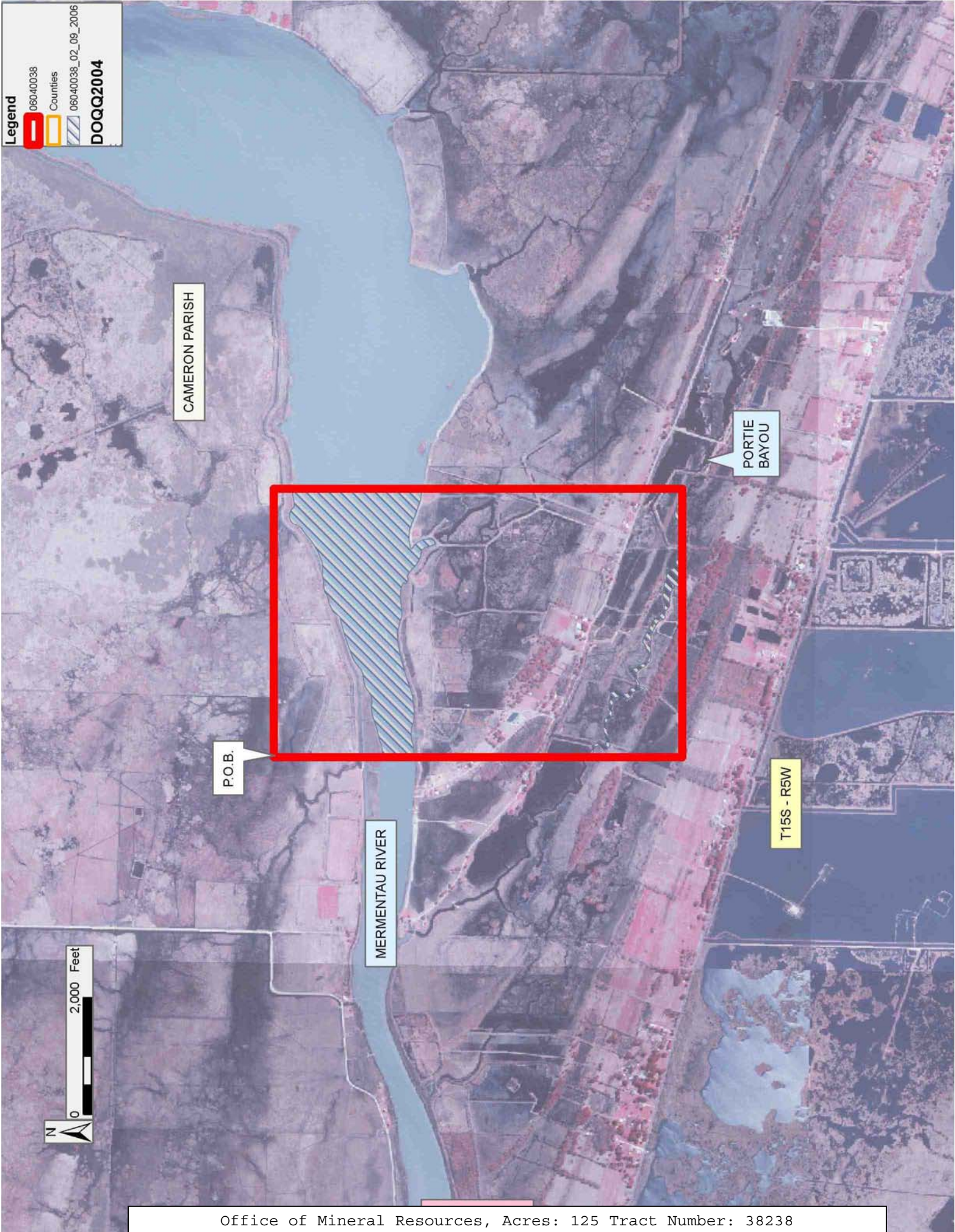
NOTE: The State of Louisiana does hereby reserve, and this lease shall be subject to, the imprescriptible right of surface use in the nature of a servitude in favor of the Department of Natural Resources, including its Offices and Commissions, for the sole purpose of implementing, constructing, servicing and maintaining approved coastal zone management and/or restoration projects. Utilization of any and all rights derived under this lease by the mineral lessee, its agents, successors or assigns, shall not interfere with nor hinder the reasonable surface use by the Department of Natural Resources, its Offices or Commissions, as herein above reserved.

Applicant: WOODLAND PETROLEUM CORPORATION

Bidder	Cash Payment	Price/Acre	Rental	Oil	Gas	Other

Legend

- 060-40038
- Counties
- 060-40038_02_09_2006
- DOQQ2004**



TRACT 38239 - Cameron Parish, Louisiana

All of the lands now or formerly constituting the beds and bottoms of all water bodies of every nature and description the title of which vests in the State of Louisiana, together with all islands arising therein and other lands formed by accretion or by reliction, where allowed by law, excepting tax adjudicated lands, and not presently under mineral lease and cross hatched on April 12, 2006, situated in Cameron Parish, Louisiana, and more particularly described as follows: Beginning at a point having Coordinates of X = 1,504,872.00 and Y = 407,696.00; thence South 7,000.00 feet to a point having Coordinates of X = 1,504,872.00 and Y = 400,696.00; thence West 4,600.00 feet to a point having Coordinates of X = 1,500,272.00 and Y = 400,696.00; thence North 7,000.00 feet to a point having Coordinates of X = 1,500,272.00 and Y = 407,696.00; thence East 4,600.00 feet to the point of beginning, containing approximately **292 acres**, all as more particularly outlined on a plat on file in the Office of Mineral Resources, Department of Natural Resources. All bearings, distances and coordinates are based on Louisiana Coordinate System of 1927, (North or South Zone), where applicable.

NOTE: The above description of the Tract nominated for lease has been provided and corrected, where required, exclusively by the nomination party. Any mineral lease selected from this Tract and awarded by the Louisiana State Mineral Board shall be without warranty of any kind, either express, implied, or statutory, including, but not limited to, the implied warranties of merchantability and fitness for a particular purpose. Should the mineral lease awarded by the Louisiana State Mineral Board be subsequently modified, cancelled or abrogated due to the existence of conflicting leases, operating agreements, private claims or other future obligations or conditions which may affect all or any portion of the leased Tract, it shall not relieve the Lessee of the obligation to pay any bonus due thereon to the Louisiana State Mineral Board, nor shall the Louisiana State Mineral Board be obligated to refund any consideration paid by the Lessor prior to such modification, cancellation, or abrogation, including, but not limited to, bonuses, rentals and royalties.

NOTE: The State of Louisiana does hereby reserve, and this lease shall be subject to, the imprescriptible right of surface use in the nature of a servitude in favor of the Department of Natural Resources, including its Offices and Commissions, for the sole purpose of implementing, constructing, servicing and maintaining approved coastal zone management and/or restoration projects. Utilization of any and all rights derived under this lease by the mineral lessee, its agents, successors or assigns, shall not interfere with nor hinder the reasonable surface use by the Department of Natural Resources, its Offices or Commissions, as herein above reserved.

Applicant: WOODLND PETROLEUM CORPORATION

Bidder	Cash Payment	Price/Acre	Rental	Oil	Gas	Other

Legend

-  06040039
-  Counties
-  06040039_02_09_2006

DOQQ2004

P.O.B.

UPPER
MUD
LAKE

CAMERON PARISH

T15S - R5W

