

TRACT 38220 - Jefferson and St. Charles Parishes, Louisiana

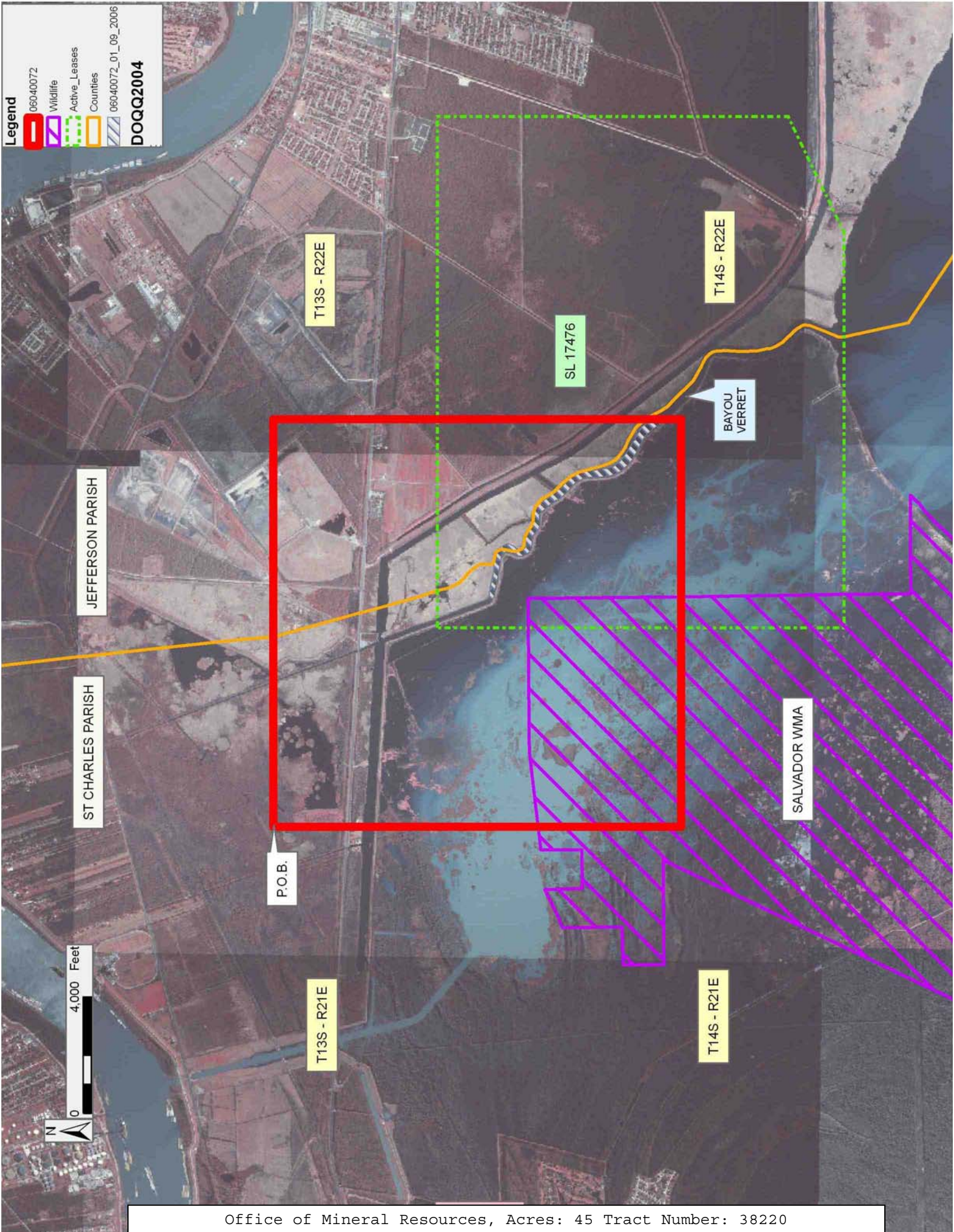
All of the lands now or formerly constituting the beds and bottoms of all water bodies of every nature and description the title of which vests in the State of Louisiana, together with all islands arising therein and other lands formed by accretion or by reliction, where allowed by law, excepting tax adjudicated lands, and not presently under mineral lease and cross hatched on April 12, 2006, situated in Jefferson and St. Charles Parishes, Louisiana, and more particularly described as follows: Beginning at a point having Coordinates of X = 2,329,200.00 and Y = 458,130.00; thence East 14,000.00 feet to a point having Coordinates of X = 2,343,200.00 and Y = 458,130.00; thence South 14,000.00 feet to a point having Coordinates of X = 2,343,200.00 and Y = 444,130.00; thence West 14,000.00 feet to a point having Coordinates of X = 2,329,200.00 and Y = 444,130.00; thence North 14,000.00 feet to the point of beginning **LESS AND EXCEPT** that portion, if any, that may lie within the boundaries of the Salvador Wildlife Management Area, containing approximately **45 acres**, all as more particularly outlined on a plat on file in the Office of Mineral Resources, Department of Natural Resources. All bearings, distances and coordinates are based on Louisiana Coordinate System of 1927, (North or South Zone), where applicable.

NOTE: The above description of the Tract nominated for lease has been provided and corrected, where required, exclusively by the nomination party. Any mineral lease selected from this Tract and awarded by the Louisiana State Mineral Board shall be without warranty of any kind, either express, implied, or statutory, including, but not limited to, the implied warranties of merchantability and fitness for a particular purpose. Should the mineral lease awarded by the Louisiana State Mineral Board be subsequently modified, cancelled or abrogated due to the existence of conflicting leases, operating agreements, private claims or other future obligations or conditions which may affect all or any portion of the leased Tract, it shall not relieve the Lessee of the obligation to pay any bonus due thereon to the Louisiana State Mineral Board, nor shall the Louisiana State Mineral Board be obligated to refund any consideration paid by the Lessor prior to such modification, cancellation, or abrogation, including, but not limited to, bonuses, rentals and royalties.

NOTE: The State of Louisiana does hereby reserve, and this lease shall be subject to, the imprescriptible right of surface use in the nature of a servitude in favor of the Department of Natural Resources, including its Offices and Commissions, for the sole purpose of implementing, constructing, servicing and maintaining approved coastal zone management and/or restoration projects. Utilization of any and all rights derived under this lease by the mineral lessee, its agents, successors or assigns, shall not interfere with nor hinder the reasonable surface use by the Department of Natural Resources, its Offices or Commissions, as herein above reserved.

Applicant: TAYLEX, INC.

| Bidder | Cash Payment | Price/ Acre | Rental | Oil | Gas | Other |
|--------|-----------------|----------------|--------|-----|-----|-------|
| | | | | | | |
| | | | | | | |
| | | | | | | |
| | | | | | | |



TRACT 38221 - Portion of Blocks 18, 19, 26, and 27, Chandeleur Sound Area, St. Bernard Parish, Louisiana

All of the lands now or formerly constituting the beds and bottoms of all water bodies of every nature and description the title of which vests in the State of Louisiana, together with all islands arising therein and other lands formed by accretion or by reliction, where allowed by law, excepting tax adjudicated lands, and not presently under mineral lease and cross hatched on April 12, 2006, situated in St. Bernard Parish, Louisiana, and more particularly described as follows: Beginning at a point within Block 18, Chandeleur Sound Area having Coordinates of X = 2,686,975.00 and Y = 446,840.00; thence South 6,510.00 feet to a point on the South line of said Block 18, also being a point on the North line of Block 27, Chandeleur Sound Area, having Coordinates of X = 2,686,975.00 and Y = 440,330.00; thence South 2,778.50 feet to a point having Coordinates of X = 2,686,975.00 and Y = 437,551.50; thence West 7,375.00 feet to a point on the West line of said Block 27, also being a point on the East line of Block 26, Chandeleur Sound Area, having Coordinates of X = 2,679,600.00 and Y = 437,551.50; thence West 652.50 feet to the most Easterly Southeast corner of State Lease No. 17394 having Coordinates of X = 2,678,947.50 and Y = 437,551.50; thence along the boundary of said State Lease No. 17394 the following courses: North 2,778.50 feet and West 5,182.00 feet to a point on the North line of said State Lease No. 17394, also being a point on the South line of Block 19, Chandeleur Sound Area having Coordinates of X = 2,673,765.50 and Y = 440,330.00; thence North 6,510.00 feet to a point having Coordinates of X = 2,673,765.50 and Y = 446,840.00; thence East 5,834.50 feet to a point on the East line of said Block 19 also being a point on the West line of said Block 18 having Coordinates of X = 2,679,600.00 and Y = 446,840.00; thence East 7,375.00 feet to the point of beginning, containing approximately **2,486.19 acres**, all as more particularly outlined on a plat on file in the Office of Mineral Resources, Department of Natural Resources. All bearings, distances and coordinates are based on Louisiana Coordinate System of 1927, (North or South Zone), where applicable.

NOTE: The above description of the Tract nominated for lease has been provided and corrected, where required, exclusively by the nomination party. Any mineral lease selected from this Tract and awarded by the Louisiana State Mineral Board shall be without warranty of any kind, either express, implied, or statutory, including, but not limited to, the implied warranties of merchantability and fitness for a particular purpose. Should the mineral lease awarded by the Louisiana State Mineral Board be subsequently modified, cancelled or abrogated due to the existence of conflicting leases, operating agreements, private claims or other future obligations or conditions which may affect all or any portion of the leased Tract, it shall not relieve the Lessee of the obligation to pay any bonus due thereon to the Louisiana State Mineral Board, nor shall the Louisiana State Mineral Board be obligated to refund any consideration paid by the Lessor prior to such modification, cancellation, or abrogation, including, but not limited to, bonuses, rentals and royalties.

NOTE: The Office of Mineral Resources will require a minimum bonus of \$230 per acre and a minimum royalty of 23%.

NOTE: The State of Louisiana does hereby reserve, and this lease shall be subject to, the imprescriptible right of surface use in the nature of a servitude in favor of the Department of Natural Resources, including its Offices and Commissions, for the sole purpose of implementing, constructing, servicing and maintaining approved coastal zone management and/or restoration projects. Utilization of any and all rights derived under this lease by the mineral lessee, its agents, successors or assigns, shall not interfere with nor hinder the reasonable surface use by the Department of Natural Resources, its Offices or Commissions, as herein above reserved.

Applicant: KARE-SUE ENERGY, INC.

| Bidder | Cash Payment | Price/ Acre | Rental | Oil | Gas | Other |
|--------|-----------------|----------------|--------|-----|-----|-------|
| | | | | | | |
| | | | | | | |
| | | | | | | |
| | | | | | | |

TRACT 38222 - Cameron Parish, Louisiana

All of the lands now or formerly constituting the beds and bottoms of all water bodies of every nature and description the title of which vests in the State of Louisiana, together with all islands arising therein and other lands formed by accretion or by reliction, where allowed by law, excepting tax adjudicated lands, and not presently under mineral lease and cross hatched on April 12, 2006, situated in Cameron Parish, Louisiana, and more particularly described as follows: Beginning at the Southwest corner of State Lease No. 18038 having Coordinates of X = 1,219,470.33 and Y = 459,957.00; thence West 8,120.21 feet to a point on the Texas Louisiana boundary having Coordinates X = 1,211,350.12 and Y = 459,957.00; thence North 31 degrees 07 minutes 12 seconds East 967.19 feet along the said Texas Louisiana boundary to a point having Coordinates of X = 1,211,850.00 and Y = 460,785.00; thence North 21 degrees 41 minutes 28 seconds East 1,403.99 feet along the said Texas Louisiana boundary to the Southwest corner of State Lease No. 18810 having Coordinates of X = 1,212,368.92 and Y = 462,089.57; thence East 4,980.53 feet along the South boundary of said State Lease No. 18810 to its Southeast corner having Coordinates of X = 1,217,349.45 and Y = 462,089.57; thence North 2,402.33 feet along the East boundary of said State Lease No. 18810 to its Northeast corner also being a point on the South boundary line of State Lease No. 18722 having Coordinates of X = 1,217,349.45 and Y = 464,491.90; thence East 5,355.08 feet along the South boundary of said State Lease No. 18722 to its Southeast corner also being a point on the West boundary of State Lease No. 18534 having Coordinates of X = 1,222,704.54 and Y = 464,491.90; thence South 83.80 feet along the West boundary of said State Lease No. 18534 to a point having Coordinates of X = 1,222,704.54 and Y = 464,408.10; thence East 1,743.93 feet along the boundary of said State Lease No. 18534 to a point having Coordinates of X = 1,224,448.47 and Y = 464,408.10; thence South 1,244.10 feet along the West boundary of said State Lease No. 18534 to its Southwest corner also being a point on the North boundary of State Lease No. 18037 having Coordinates of X = 1,224,448.47 and Y = 463,164.00; thence West 1,743.93 feet along the North boundary of said State Lease No. 18037 to its Northwest corner having Coordinates of X = 1,222,704.54 and Y = 463,164.00; thence South 1,074.43 feet along the West boundary of said State Lease No. 18037 its Southwest corner also being a point on the North boundary of State Lease No. 18038 having Coordinates of X = 1,222,704.54 and Y = 462,089.57; thence West 3,234.21 feet along the North boundary of said State Lease No. 18038 to its Northwest corner having Coordinates of X = 1,219,470.33 and Y = 462,089.57; thence South 2,132.57 feet along the West boundary of said State Lease No. 18038 to the point of beginning, containing approximately **715.19 acres, LESS AND EXCEPT** that portion thereof, if any, located West of the boundary line between the States of Texas and Louisiana as determined by the report of the Special Master and adjudicated by the Supreme Court of the United States in litigation styled **Texas v. Louisiana, et al No. 36 Original**, or as otherwise approved by said court, all as more particularly outlined on a plat on file in the Office of Mineral Resources, Department of Natural Resources. All bearings,

distances and coordinates are based on Louisiana Coordinate System of 1927, (North or South Zone), where applicable.

NOTE: The above description of the Tract nominated for lease has been provided and corrected, where required, exclusively by the nomination party. Any mineral lease selected from this Tract and awarded by the Louisiana State Mineral Board shall be without warranty of any kind, either express, implied, or statutory, including, but not limited to, the implied warranties of merchantability and fitness for a particular purpose. Should the mineral lease awarded by the Louisiana State Mineral Board be subsequently modified, cancelled or abrogated due to the existence of conflicting leases, operating agreements, private claims or other future obligations or conditions which may affect all or any portion of the leased Tract, it shall not relieve the Lessee of the obligation to pay any bonus due thereon to the Louisiana State Mineral Board, nor shall the Louisiana State Mineral Board be obligated to refund any consideration paid by the Lessor prior to such modification, cancellation, or abrogation, including, but not limited to, bonuses, rentals and royalties.

NOTE: The State of Louisiana does hereby reserve, and this lease shall be subject to, the imprescriptible right of surface use in the nature of a servitude in favor of the Department of Natural Resources, including its Offices and Commissions, for the sole purpose of implementing, constructing, servicing and maintaining approved coastal zone management and/or restoration projects. Utilization of any and all rights derived under this lease by the mineral lessee, its agents, successors or assigns, shall not interfere with nor hinder the reasonable surface use by the Department of Natural Resources, its Offices or Commissions, as herein above reserved.

Applicant: AMEX RESOURCES, INC.

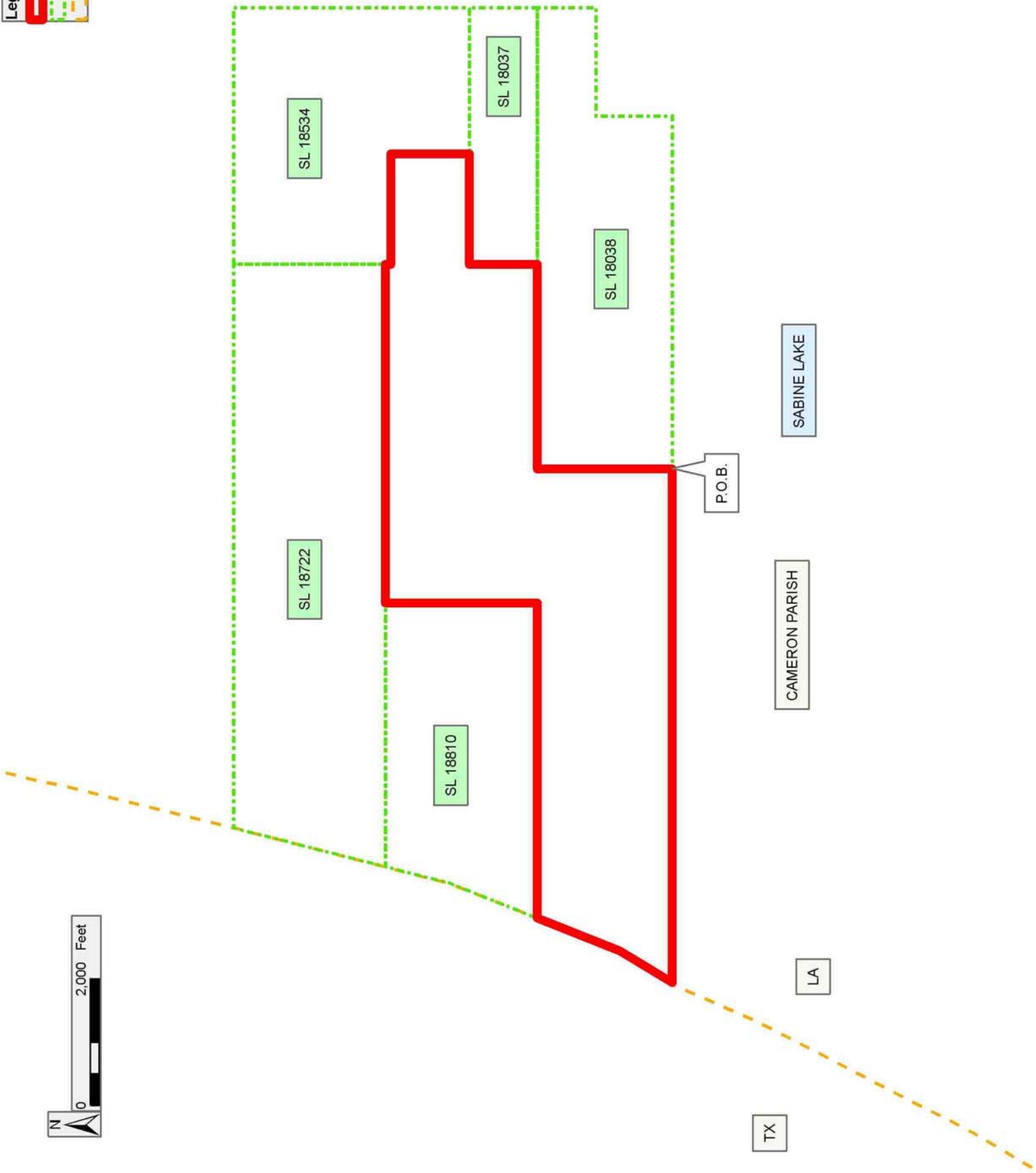
| Bidder | Cash Payment | Price/ Acre | Rental | Oil | Gas | Other |
|--------|-----------------|----------------|--------|-----|-----|-------|
| | | | | | | |
| | | | | | | |
| | | | | | | |
| | | | | | | |

Legend

06040023

Active_Leases

Parish Boundary



TRACT 38223 - Assumption Parish, Louisiana

All of the lands now or formerly constituting the beds and bottoms of all water bodies of every nature and description the title of which vests in the State of Louisiana, together with all islands arising therein and other lands formed by accretion or by reliction, where allowed by law, excepting tax adjudicated lands, and not presently under mineral lease and cross hatched on April 12, 2006, situated in Assumption Parish, Louisiana, and more particularly described as follows: Beginning at a point having Coordinates of X = 2,054,075.00 and Y = 434,250.00; thence West 5,294.00 feet to a point having Coordinates of X = 2,048,781.00 and Y = 434,250.00; thence North 15,250.00 feet to a point on the South line of State Lease No. 18744 having Coordinates of 2,048,781.00 and Y = 449,500.00; thence East 7,819.00 feet on the South line of said State Lease No. 18744 to its Southeast corner having Coordinates of X = 2,056,600.00 and Y = 449,500.00; thence East 1,675.00 feet to a point having Coordinates of X = 2,058,275.00 and Y = 449,500.00; thence South 900.00 feet to the Northeast corner of State Lease No. 16625 having Coordinates of X = 2,058,275.00 and Y = 448,600.00; thence South 32 degrees 18 minutes 14 seconds West 4,069.92 feet on the West line of said State Lease No. 16625 to its Southwest corner and the Northwest corner of State Lease No. 16626 having Coordinates of X = 2,056,100.00 and Y = 445,160.00; thence along the boundary of said State Lease No. 16626 the following courses: South 32 degrees 14 minutes 44 seconds West 3,795.36 feet and South 500.00 feet to its Southwest corner having Coordinates of X = 2,054,075.00 and Y = 441,450.00; thence South 7,200.00 feet to the point of beginning, containing approximately **2,258 acres**, all as more particularly outlined on a plat on file in the Office of Mineral Resources, Department of Natural Resources. All bearings, distances and coordinates are based on Louisiana Coordinate System of 1927, (North or South Zone), where applicable.

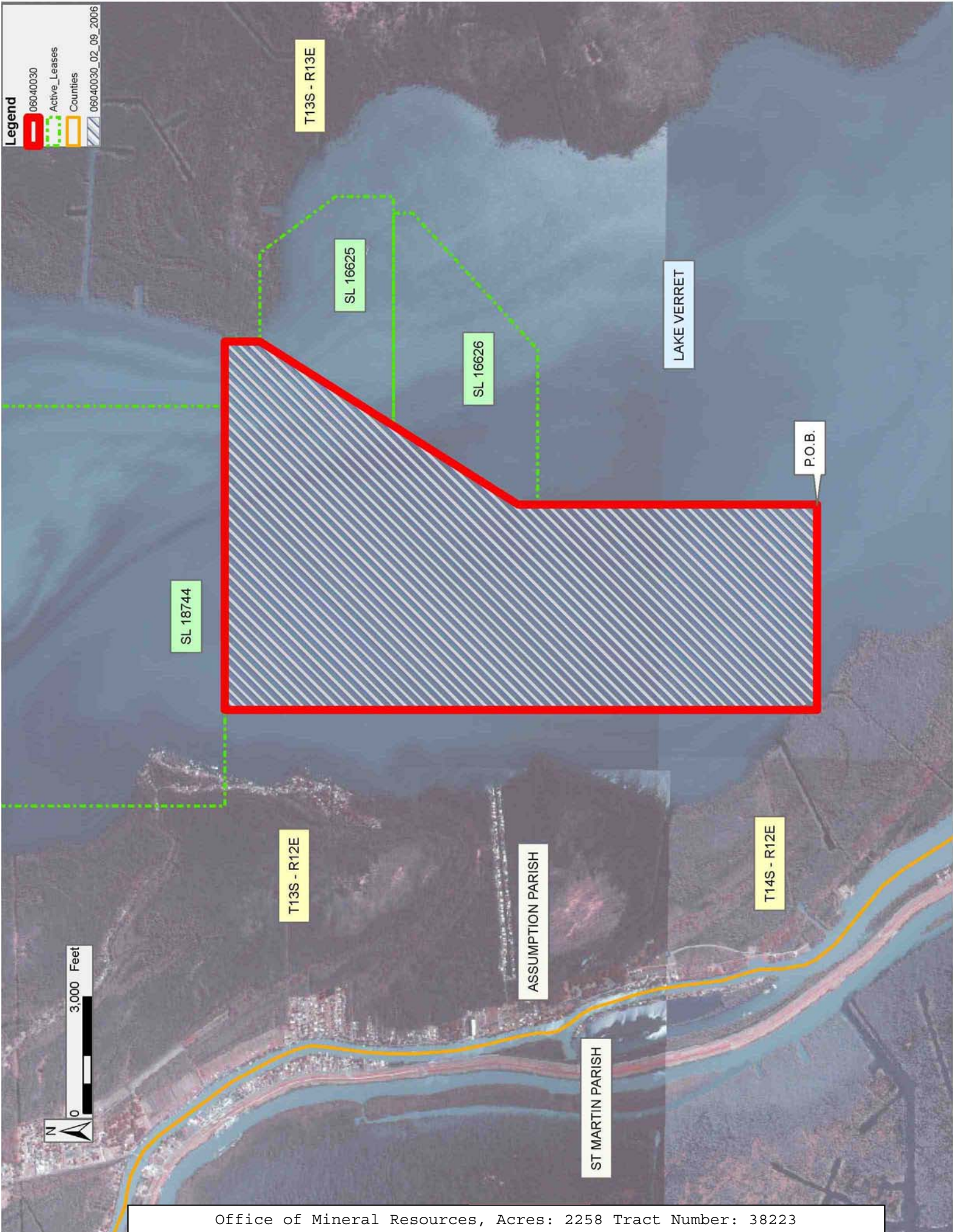
NOTE: The above description of the Tract nominated for lease has been provided and corrected, where required, exclusively by the nomination party. Any mineral lease selected from this Tract and awarded by the Louisiana State Mineral Board shall be without warranty of any kind, either express, implied, or statutory, including, but not limited to, the implied warranties of merchantability and fitness for a particular purpose. Should the mineral lease awarded by the Louisiana State Mineral Board be subsequently modified, cancelled or abrogated due to the existence of conflicting leases, operating agreements, private claims or other future obligations or conditions which may affect all or any portion of the leased Tract, it shall not relieve the Lessee of the obligation to pay any bonus due thereon to the Louisiana State Mineral Board, nor shall the Louisiana State Mineral Board be obligated to refund any consideration paid by the Lessor prior to such modification, cancellation, or abrogation, including, but not limited to, bonuses, rentals and royalties.

NOTE: The State of Louisiana does hereby reserve, and this lease shall be subject to, the imprescriptible right of surface use in the nature of a servitude in favor of the Department of Natural Resources, including its

Offices and Commissions, for the sole purpose of implementing, constructing, servicing and maintaining approved coastal zone management and/or restoration projects. Utilization of any and all rights derived under this lease by the mineral lessee, its agents, successors or assigns, shall not interfere with nor hinder the reasonable surface use by the Department of Natural Resources, its Offices or Commissions, as herein above reserved.

Applicant: WOODLAND PETROLEUM CORPORATION

| Bidder | Cash Payment | Price/ Acre | Rental | Oil | Gas | Other |
|--------|-----------------|----------------|--------|-----|-----|-------|
| | | | | | | |
| | | | | | | |
| | | | | | | |
| | | | | | | |



TRACT 38224 - Assumption Parish, Louisiana

All of the lands now or formerly constituting the beds and bottoms of all water bodies of every nature and description the title of which vests in the State of Louisiana, together with all islands arising therein and other lands formed by accretion or by reliction, where allowed by law, excepting tax adjudicated lands, and not presently under mineral lease and cross hatched on April 12, 2006, situated in Assumption Parish, Louisiana, and more particularly described as follows: Beginning at a point having Coordinates of X = 2,072,878.00 and Y = 441,450.00; thence West 11,303.00 feet to a point having Coordinates of X = 2,061,575.00 and Y = 441,450.00; thence North 3,200.00 feet to the Northernmost Southeast corner of State Lease No. 16626 having Coordinates of X = 2,061,575.00 and Y = 444,650.00; thence North 510.00 feet on the East line of said State Lease No. 16626 to its Northeast corner and a point on the South line of State Lease No. 16625 having Coordinates of X = 2,061,575.00 and Y = 445,160.00; thence along the boundary of said State Lease No. 16625 the following courses: East 425.00 feet, North 1,490.00 feet, and North 36 degrees 38 minutes 03 seconds West 2,430.02 feet to its Northeast corner having Coordinates of X = 2,060,550.00 and Y = 448,600.00; thence East 12,328.00 feet to a point having Coordinates of X = 2,072,878.00 and Y = 448,600.00; thence South 440.00 feet to the Northwest corner of State Lease No. 18215 having Coordinates of X = 2,072,878.00 and Y = 448,160.00; thence South 6,000.00 feet on the West line of said State Lease No. 18215 to its Southwest corner having Coordinates of X = 2,072,878.00 and Y = 442,160.00; thence South 710.00 feet to the point of beginning, containing approximately **354 acres**, all as more particularly outlined on a plat on file in the Office of Mineral Resources, Department of Natural Resources. All bearings, distances and coordinates are based on Louisiana Coordinate System of 1927, (North or South Zone), where applicable.

NOTE: The above description of the Tract nominated for lease has been provided and corrected, where required, exclusively by the nomination party. Any mineral lease selected from this Tract and awarded by the Louisiana State Mineral Board shall be without warranty of any kind, either express, implied, or statutory, including, but not limited to, the implied warranties of merchantability and fitness for a particular purpose. Should the mineral lease awarded by the Louisiana State Mineral Board be subsequently modified, cancelled or abrogated due to the existence of conflicting leases, operating agreements, private claims or other future obligations or conditions which may affect all or any portion of the leased Tract, it shall not relieve the Lessee of the obligation to pay any bonus due thereon to the Louisiana State Mineral Board, nor shall the Louisiana State Mineral Board be obligated to refund any consideration paid by the Lessor prior to such modification, cancellation, or abrogation, including, but not limited to, bonuses, rentals and royalties.

NOTE: The State of Louisiana does hereby reserve, and this lease shall be subject to, the imprescriptible right of surface use in the nature of a servitude in favor of the Department of Natural Resources, including its

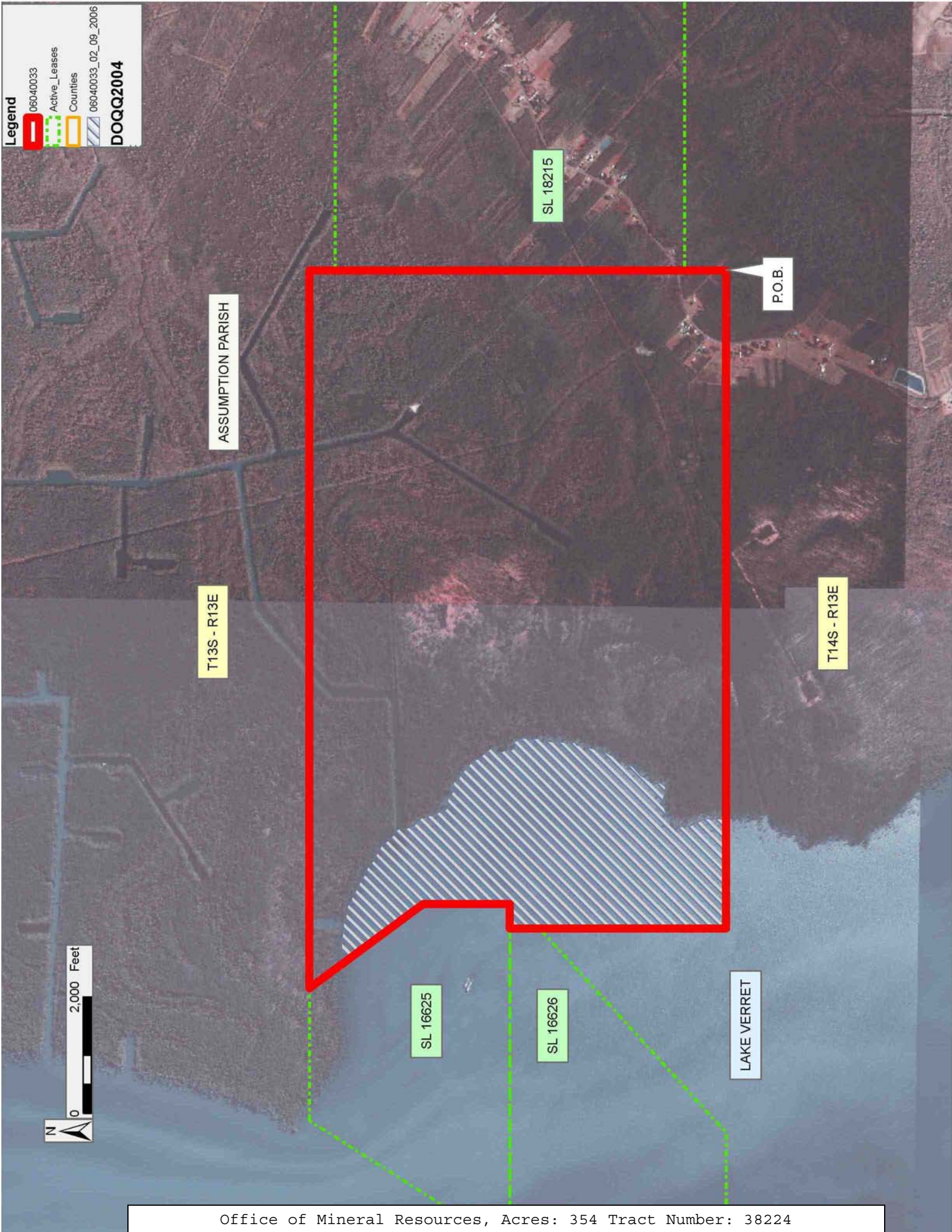
Offices and Commissions, for the sole purpose of implementing, constructing, servicing and maintaining approved coastal zone management and/or restoration projects. Utilization of any and all rights derived under this lease by the mineral lessee, its agents, successors or assigns, shall not interfere with nor hinder the reasonable surface use by the Department of Natural Resources, its Offices or Commissions, as herein above reserved.

Applicant: WOODLAND PETROLEUM CORPORATION

| Bidder | Cash Payment | Price/ Acre | Rental | Oil | Gas | Other |
|--------|-----------------|----------------|--------|-----|-----|-------|
| | | | | | | |
| | | | | | | |
| | | | | | | |
| | | | | | | |

Legend

- 06040033
- Active_Leases
- Counties
- 06040033_02_09_2006
- DOQQ2004**



TRACT 38225 - Assumption Parish, Louisiana

All of the lands now or formerly constituting the beds and bottoms of all water bodies of every nature and description the title of which vests in the State of Louisiana, together with all islands arising therein and other lands formed by accretion or by reliction, where allowed by law, excepting tax adjudicated lands, and not presently under mineral lease and cross hatched on April 12, 2006, situated in Assumption Parish, Louisiana, and more particularly described as follows: Beginning at a point having Coordinates of X = 2,054,075.00 and Y = 434,250.00; thence North 7,200.00 feet to the Southwest corner of State Lease No. 16626 having Coordinates of X = 2,054,075.00 and Y = 441,450.00; thence along the boundary of said State Lease No. 16626 the following courses: East 4,000.00 feet and North 47 degrees 33 minutes 50 seconds East 4,742.36 feet to its Northernmost Southeast corner having Coordinates of X = 2,061,575.00 and Y = 444,650.00; thence South 10,400.00 feet to a point having Coordinates of X = 2,061,575.00 and Y = 434,250.00; thence West 7,500.00 feet to the point of beginning, containing approximately **1,368.23 acres**, all as more particularly outlined on a plat on file in the Office of Mineral Resources, Department of Natural Resources. All bearings, distances and coordinates are based on Louisiana Coordinate System of 1927, (North or South Zone), where applicable.

NOTE: The above description of the Tract nominated for lease has been provided and corrected, where required, exclusively by the nomination party. Any mineral lease selected from this Tract and awarded by the Louisiana State Mineral Board shall be without warranty of any kind, either express, implied, or statutory, including, but not limited to, the implied warranties of merchantability and fitness for a particular purpose. Should the mineral lease awarded by the Louisiana State Mineral Board be subsequently modified, cancelled or abrogated due to the existence of conflicting leases, operating agreements, private claims or other future obligations or conditions which may affect all or any portion of the leased Tract, it shall not relieve the Lessee of the obligation to pay any bonus due thereon to the Louisiana State Mineral Board, nor shall the Louisiana State Mineral Board be obligated to refund any consideration paid by the Lessor prior to such modification, cancellation, or abrogation, including, but not limited to, bonuses, rentals and royalties.

NOTE: The State of Louisiana does hereby reserve, and this lease shall be subject to, the imprescriptible right of surface use in the nature of a servitude in favor of the Department of Natural Resources, including its Offices and Commissions, for the sole purpose of implementing, constructing, servicing and maintaining approved coastal zone management and/or restoration projects. Utilization of any and all rights derived under this lease by the mineral lessee, its agents, successors or assigns, shall not interfere with nor hinder the reasonable surface use by the Department of Natural Resources, its Offices or Commissions, as herein above reserved.

Applicant: WOODLAND PETROLEUM CORPORATION

| Bidder | Cash Payment | Price/ Acre | Rental | Oil | Gas | Other |
|--------|-----------------|----------------|--------|-----|-----|-------|
| | | | | | | |
| | | | | | | |
| | | | | | | |
| | | | | | | |

Legend

06040031
Active_Leases
Counties
DOQQ2004

ASSUMPTION PARISH

T14S - R13E

SL 16626

P.O.B.

LAKE VERRET



TRACT 38226 - Assumption Parish, Louisiana

All of the lands now or formerly constituting the beds and bottoms of all water bodies of every nature and description the title of which vests in the State of Louisiana, together with all islands arising therein and other lands formed by accretion or by reliction, where allowed by law, excepting tax adjudicated lands, and not presently under mineral lease and cross hatched on April 12, 2006, situated in Assumption Parish, Louisiana, and more particularly described as follows: Beginning at a point having Coordinates of X = 2,067,917.00 and Y = 434,250.00; thence West 6,342.00 feet to a point having Coordinates of X = 2,061,575.00 and Y = 434,250.00; thence North 7,200.00 feet to a point having Coordinates of X = 2,061,575.00 and Y = 441,450.00; thence East 6,342.00 feet to a point having Coordinates of X = 2,067,917.00 and Y = 441,450.00; thence South 7,200.00 feet to the point of beginning, containing approximately **473 acres**, all as more particularly outlined on a plat on file in the Office of Mineral Resources, Department of Natural Resources. All bearings, distances and coordinates are based on Louisiana Coordinate System of 1927, (North or South Zone), where applicable.

NOTE: The above description of the Tract nominated for lease has been provided and corrected, where required, exclusively by the nomination party. Any mineral lease selected from this Tract and awarded by the Louisiana State Mineral Board shall be without warranty of any kind, either express, implied, or statutory, including, but not limited to, the implied warranties of merchantability and fitness for a particular purpose. Should the mineral lease awarded by the Louisiana State Mineral Board be subsequently modified, cancelled or abrogated due to the existence of conflicting leases, operating agreements, private claims or other future obligations or conditions which may affect all or any portion of the leased Tract, it shall not relieve the Lessee of the obligation to pay any bonus due thereon to the Louisiana State Mineral Board, nor shall the Louisiana State Mineral Board be obligated to refund any consideration paid by the Lessor prior to such modification, cancellation, or abrogation, including, but not limited to, bonuses, rentals and royalties.

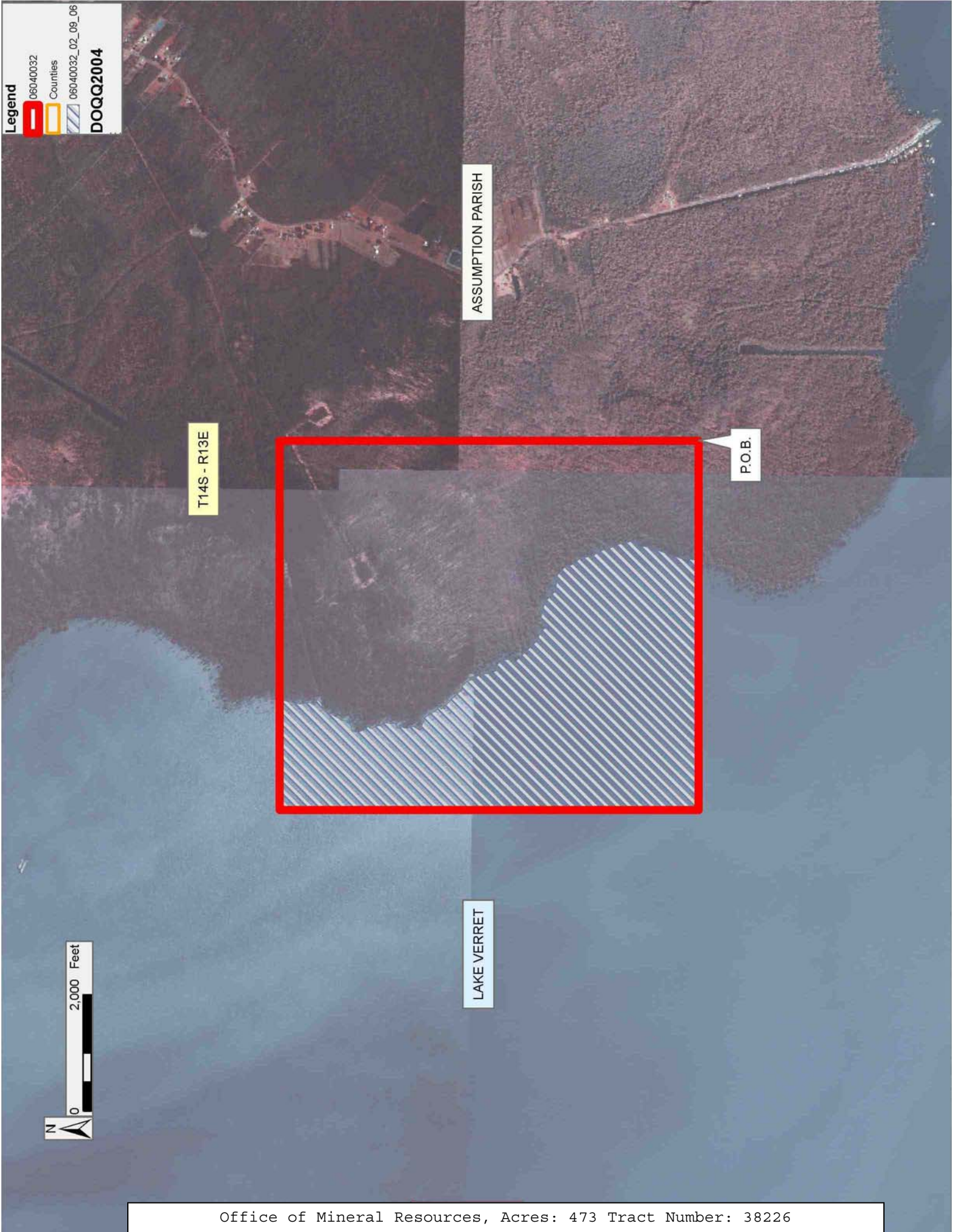
NOTE: The State of Louisiana does hereby reserve, and this lease shall be subject to, the imprescriptible right of surface use in the nature of a servitude in favor of the Department of Natural Resources, including its Offices and Commissions, for the sole purpose of implementing, constructing, servicing and maintaining approved coastal zone management and/or restoration projects. Utilization of any and all rights derived under this lease by the mineral lessee, its agents, successors or assigns, shall not interfere with nor hinder the reasonable surface use by the Department of Natural Resources, its Offices or Commissions, as herein above reserved.

Applicant: WOODLAND PETROLEUM CORPORATION

| Bidder | Cash Payment | Price/ Acre | Rental | Oil | Gas | Other |
|--------|-----------------|----------------|--------|-----|-----|-------|
| | | | | | | |
| | | | | | | |
| | | | | | | |
| | | | | | | |

Legend

06040032
Counties
06040032_02_09_06
DOQQ2004



TRACT 38227 - St. Martin Parish, Louisiana

All of the lands now or formerly constituting the beds and bottoms of all water bodies of every nature and description the title of which vests in the State of Louisiana, together with all islands arising therein and other lands formed by accretion or by reliction, where allowed by law, excepting tax adjudicated lands, and not presently under mineral lease and cross hatched on April 12, 2006, situated in St. Martin Parish, Louisiana, and more particularly described as follows: Beginning at a point having Coordinates of X = 2,040,540.00 and Y = 418,705.00; thence East 8,024.00 feet to a point having Coordinates of X = 2,048,564.00 and Y = 418,705.00; thence South 7,833.00 feet to a point having Coordinates of X = 2,048,564.00 and Y = 410,872.00; thence West 561.00 feet to the Southernmost Northeast corner of State Lease No. 18335 having Coordinates of X = 2,048,003.00 and Y = 410,872.00; thence along the boundary of said State Lease No. 18335 the following courses: North 89 degrees 52 minutes 00 seconds West 1,288.00 feet, North 00 degrees 38 minutes 55 seconds West 2,650.17 feet and South 89 degrees 59 minutes 26 seconds West 6,145.00 feet to its Northernmost Northwest corner having Coordinates of X = 2,040,540.00 and Y = 413,524.00; thence North 5,181.00 feet to the point of beginning, containing approximately **67 acres**, all as more particularly outlined on a plat on file in the Office of Mineral Resources, Department of Natural Resources. All bearings, distances and coordinates are based on Louisiana Coordinate System of 1927, (North or South Zone), where applicable.

NOTE: The above description of the Tract nominated for lease has been provided and corrected, where required, exclusively by the nomination party. Any mineral lease selected from this Tract and awarded by the Louisiana State Mineral Board shall be without warranty of any kind, either express, implied, or statutory, including, but not limited to, the implied warranties of merchantability and fitness for a particular purpose. Should the mineral lease awarded by the Louisiana State Mineral Board be subsequently modified, cancelled or abrogated due to the existence of conflicting leases, operating agreements, private claims or other future obligations or conditions which may affect all or any portion of the leased Tract, it shall not relieve the Lessee of the obligation to pay any bonus due thereon to the Louisiana State Mineral Board, nor shall the Louisiana State Mineral Board be obligated to refund any consideration paid by the Lessor prior to such modification, cancellation, or abrogation, including, but not limited to, bonuses, rentals and royalties.

NOTE: The State of Louisiana does hereby reserve, and this lease shall be subject to, the imprescriptible right of surface use in the nature of a servitude in favor of the Department of Natural Resources, including its Offices and Commissions, for the sole purpose of implementing, constructing, servicing and maintaining approved coastal zone management and/or restoration projects. Utilization of any and all rights derived under this lease by the mineral lessee, its agents, successors or assigns, shall not interfere with nor hinder the reasonable surface use by the

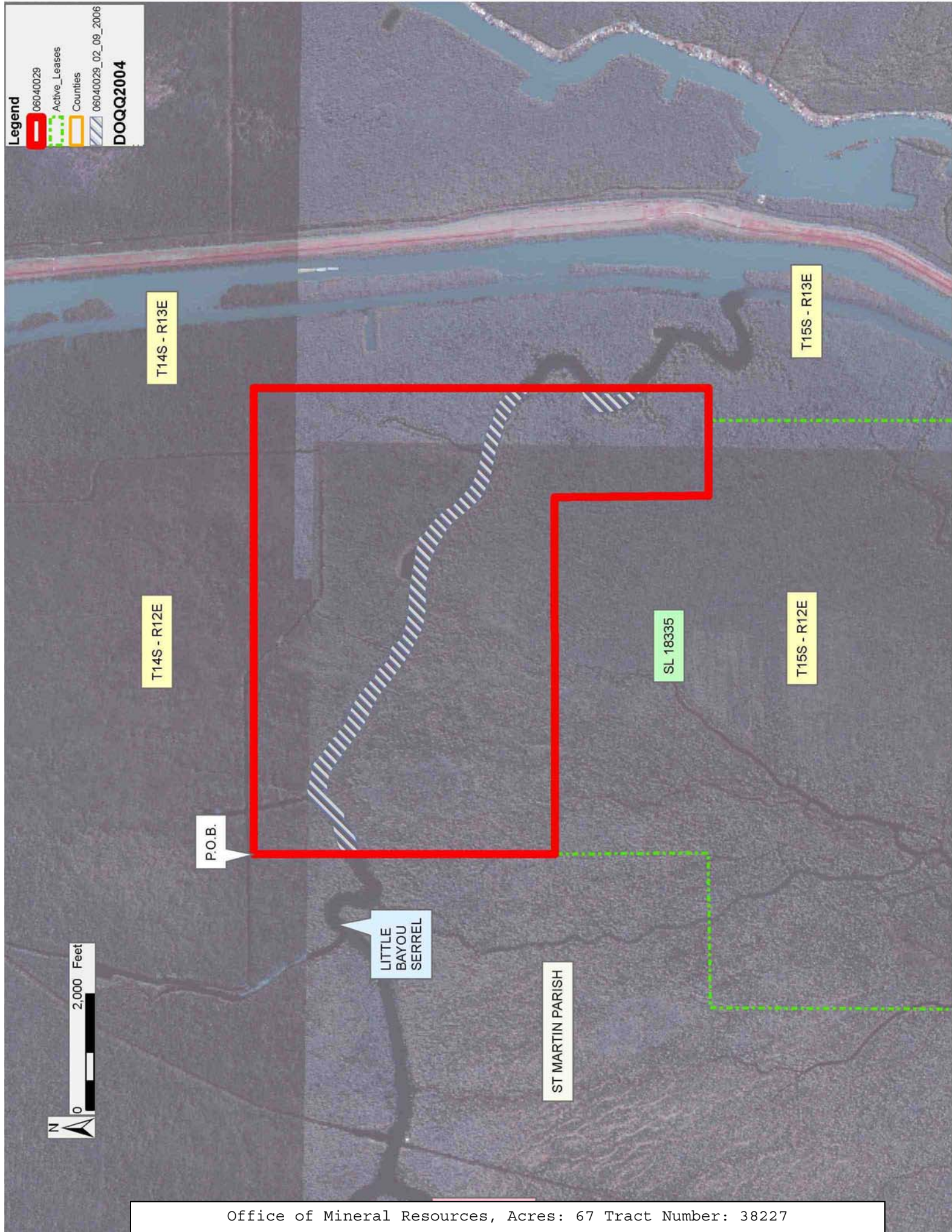
Department of Natural Resources, its Offices or Commissions, as herein above reserved.

Applicant: WOODLAND PETROLEUM CORPORATION

| Bidder | Cash Payment | Price/ Acre | Rental | Oil | Gas | Other |
|--------|-----------------|----------------|--------|-----|-----|-------|
| | | | | | | |
| | | | | | | |
| | | | | | | |
| | | | | | | |

Legend

- 06040029
- Active_Leases
- Counties
- 06040029_02_09_2006
- DOQQ2004**



TRACT 38228 - St. Martin Parish, Louisiana

All of the lands now or formerly constituting the beds and bottoms of all water bodies of every nature and description the title of which vests in the State of Louisiana, together with all islands arising therein and other lands formed by accretion or by reliction, where allowed by law, excepting tax adjudicated lands, and not presently under mineral lease and cross hatched on April 12, 2006, situated in St. Martin Parish, Louisiana, and more particularly described as follows: Beginning at a point having Coordinates of X = 2,032,516.00 and Y = 418,705.00; thence South 7,854.00 feet to a point having Coordinates of X = 2,032,516.00 and Y = 410,851.00; thence West 8,024.00 feet to a point having Coordinates of X = 2,024,492.00 and Y = 410,851.00; thence North 7,854.00 feet to a point having Coordinates of X = 2,024,492.00 and Y = 418,705.00; thence East 8,024.00 feet to the point of beginning, containing approximately **108 acres**, all as more particularly outlined on a plat on file in the Office of Mineral Resources, Department of Natural Resources. All bearings, distances and coordinates are based on Louisiana Coordinate System of 1927, (North or South Zone), where applicable.

NOTE: The above description of the Tract nominated for lease has been provided and corrected, where required, exclusively by the nomination party. Any mineral lease selected from this Tract and awarded by the Louisiana State Mineral Board shall be without warranty of any kind, either express, implied, or statutory, including, but not limited to, the implied warranties of merchantability and fitness for a particular purpose. Should the mineral lease awarded by the Louisiana State Mineral Board be subsequently modified, cancelled or abrogated due to the existence of conflicting leases, operating agreements, private claims or other future obligations or conditions which may affect all or any portion of the leased Tract, it shall not relieve the Lessee of the obligation to pay any bonus due thereon to the Louisiana State Mineral Board, nor shall the Louisiana State Mineral Board be obligated to refund any consideration paid by the Lessor prior to such modification, cancellation, or abrogation, including, but not limited to, bonuses, rentals and royalties.

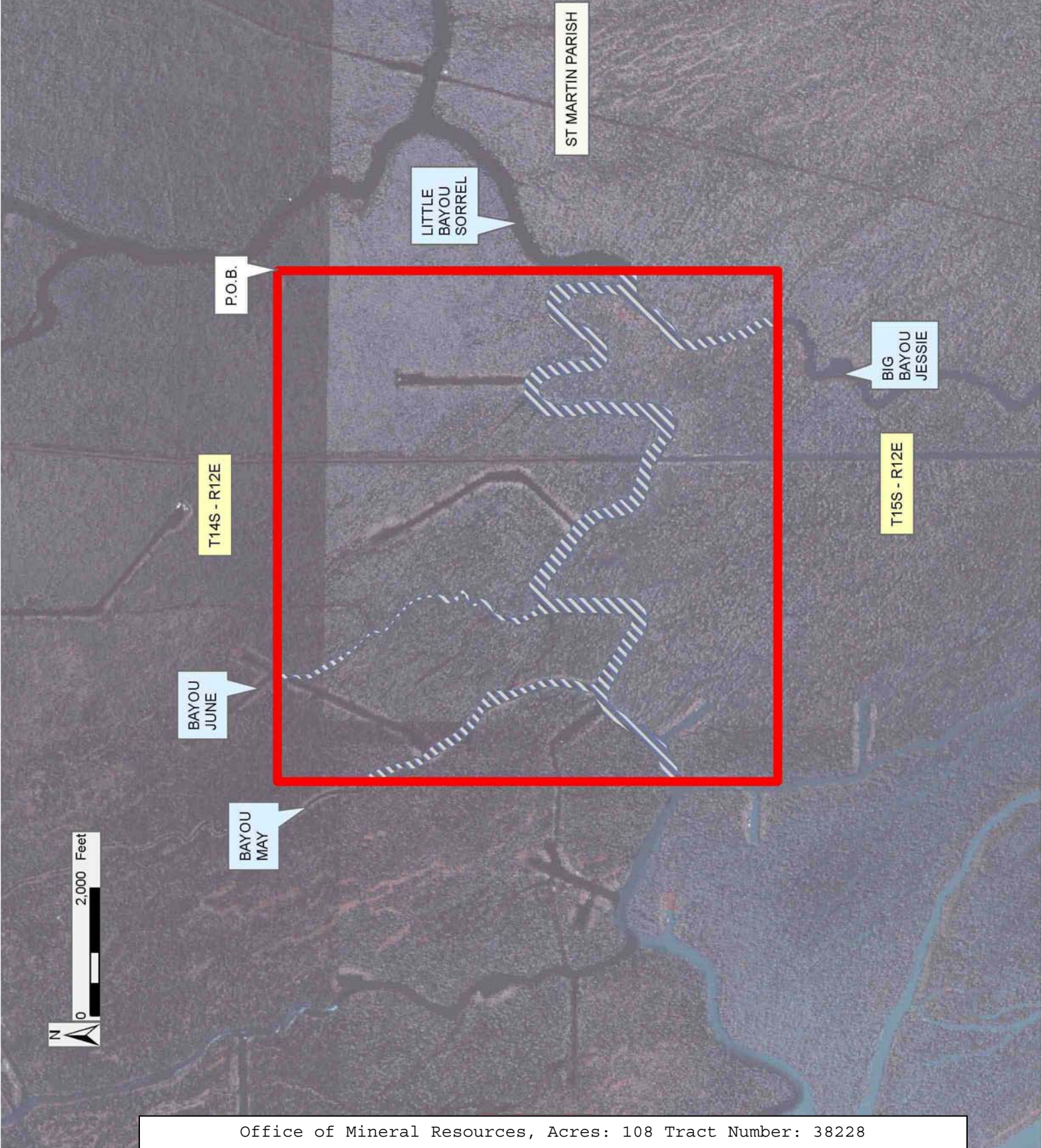
NOTE: The State of Louisiana does hereby reserve, and this lease shall be subject to, the imprescriptible right of surface use in the nature of a servitude in favor of the Department of Natural Resources, including its Offices and Commissions, for the sole purpose of implementing, constructing, servicing and maintaining approved coastal zone management and/or restoration projects. Utilization of any and all rights derived under this lease by the mineral lessee, its agents, successors or assigns, shall not interfere with nor hinder the reasonable surface use by the Department of Natural Resources, its Offices or Commissions, as herein above reserved.

Applicant: WOODLAND PETROLEUM CORPORATION

| Bidder | Cash Payment | Price/ Acre | Rental | Oil | Gas | Other |
|--------|-----------------|----------------|--------|-----|-----|-------|
| | | | | | | |
| | | | | | | |
| | | | | | | |
| | | | | | | |

Legend

06040027
Counties
06040027_02_08_2006
DOQQ2004



TRACT 38229 - St. Martin Parish, Louisiana

All of the lands now or formerly constituting the beds and bottoms of all water bodies of every nature and description the title of which vests in the State of Louisiana, together with all islands arising therein and other lands formed by accretion or by reliction, where allowed by law, excepting tax adjudicated lands, and not presently under mineral lease and cross hatched on April 12, 2006, situated in St. Martin Parish, Louisiana, and more particularly described as follows: Beginning at a point having Coordinates of X = 2,032,516.00 and Y = 418,705.00; thence East 8,024.00 feet to a point having Coordinates of X = 2,040,540.00 and Y = 418,705.00; thence South 5,181.00 feet to the Northernmost Northwest corner of State Lease No. 18335 having Coordinates of X = 2,040,540.00 and Y = 413,524.00; thence along the boundary of said State Lease No. 18335 the following courses: South 00 degrees 28 minutes 41 seconds East 2,637.09 feet and South 89 degrees 13 minutes 31 seconds West 2,662.24 feet to its Southernmost Northwest corner having Coordinates of X = 2,037,900.00 and Y = 410,851.00; thence West 5,384.00 feet to a point having Coordinates of X = 2,032,516.00 and Y = 410,851.00; thence North 7,854.00 feet to the point of beginning, containing approximately **91 acres**, all as more particularly outlined on a plat on file in the Office of Mineral Resources, Department of Natural Resources. All bearings, distances and coordinates are based on Louisiana Coordinate System of 1927, (North or South Zone), where applicable.

NOTE: The above description of the Tract nominated for lease has been provided and corrected, where required, exclusively by the nomination party. Any mineral lease selected from this Tract and awarded by the Louisiana State Mineral Board shall be without warranty of any kind, either express, implied, or statutory, including, but not limited to, the implied warranties of merchantability and fitness for a particular purpose. Should the mineral lease awarded by the Louisiana State Mineral Board be subsequently modified, cancelled or abrogated due to the existence of conflicting leases, operating agreements, private claims or other future obligations or conditions which may affect all or any portion of the leased Tract, it shall not relieve the Lessee of the obligation to pay any bonus due thereon to the Louisiana State Mineral Board, nor shall the Louisiana State Mineral Board be obligated to refund any consideration paid by the Lessor prior to such modification, cancellation, or abrogation, including, but not limited to, bonuses, rentals and royalties.

NOTE: The State of Louisiana does hereby reserve, and this lease shall be subject to, the imprescriptible right of surface use in the nature of a servitude in favor of the Department of Natural Resources, including its Offices and Commissions, for the sole purpose of implementing, constructing, servicing and maintaining approved coastal zone management and/or restoration projects. Utilization of any and all rights derived under this lease by the mineral lessee, its agents, successors or assigns, shall not interfere with nor hinder the reasonable surface use by the

Department of Natural Resources, its Offices or Commissions, as herein above reserved.

Applicant: WOODLAND PETROLEUM CORPORATION

| Bidder | Cash Payment | Price/ Acre | Rental | Oil | Gas | Other |
|--------|-----------------|----------------|--------|-----|-----|-------|
| | | | | | | |
| | | | | | | |
| | | | | | | |
| | | | | | | |

Legend

- 06040028
- Active_Leases
- Counties
- 06040028_02_06_06
- DOQQ2004**

