

TRACT 38200 - Lasalle Parish, Louisiana

All of the lands now or formerly constituting the beds and bottoms of all water bodies of every nature and description the title of which vests in the State of Louisiana, together with all islands arising therein and other lands formed by accretion or by reliction, where allowed by law, excepting tax adjudicated lands, and not presently under mineral lease and cross hatched on April 12, 2006, situated in Lasalle Parish, Louisiana, and more particularly described as follows: Beginning at the Southwest corner of State Lease No. 16827 having Coordinates of X = 2,120,120.00 and Y = 322,260.00; thence East 3,960.00 feet along the South line of said State Lease No. 16827 to its Southeast corner having Coordinates of X = 2,124,080.00 and Y = 322,260.00; thence continue East 429.69 feet to a point having Coordinates of X = 2,124,509.69 and Y = 322,260.00; thence South 2,576.01 feet to a point having Coordinates of X = 2,124,509.69 and Y = 319,683.99; thence West 4,389.69 feet to a point having Coordinates X = 2,120,120.00 and Y = 319,683.99; thence North 2,576.01 feet to the point of beginning, containing approximately **259.59 acres**, all as more particularly outlined on a plat on file in the Office of Mineral Resources, Department of Natural Resources. All bearings, distances and coordinates are based on Louisiana Coordinate System of 1927, (North or South Zone), where applicable.

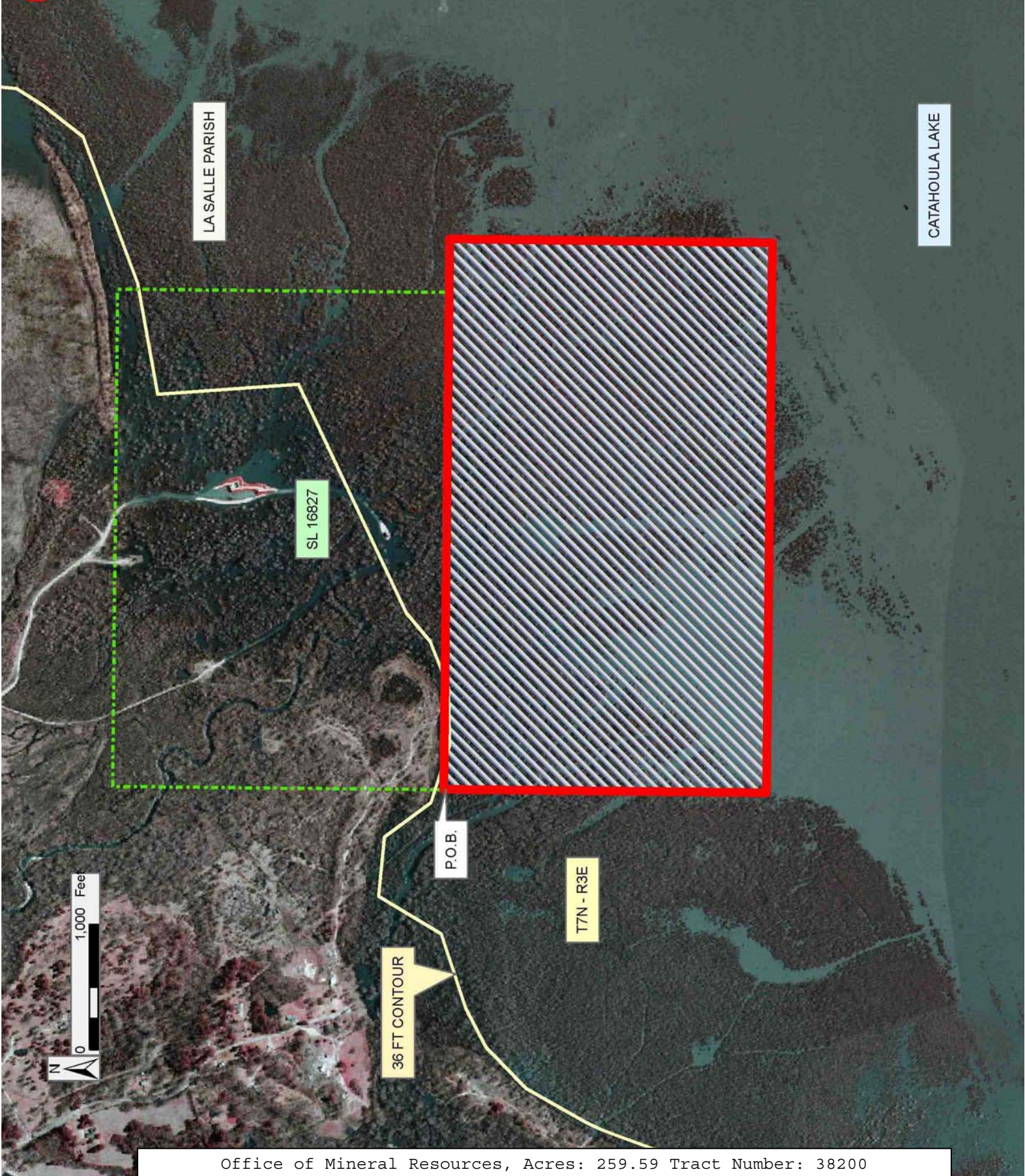
NOTE: The above description of the Tract nominated for lease has been provided and corrected, where required, exclusively by the nomination party. Any mineral lease selected from this Tract and awarded by the Louisiana State Mineral Board shall be without warranty of any kind, either express, implied, or statutory, including, but not limited to, the implied warranties of merchantability and fitness for a particular purpose. Should the mineral lease awarded by the Louisiana State Mineral Board be subsequently modified, cancelled or abrogated due to the existence of conflicting leases, operating agreements, private claims or other future obligations or conditions which may affect all or any portion of the leased Tract, it shall not relieve the Lessee of the obligation to pay any bonus due thereon to the Louisiana State Mineral Board, nor shall the Louisiana State Mineral Board be obligated to refund any consideration paid by the Lessor prior to such modification, cancellation, or abrogation, including, but not limited to, bonuses, rentals and royalties.

Applicant: ALLEN PETROLEUM SERVICES

Bidder	Cash Payment	Price/Acre	Rental	Oil	Gas	Other

Legend

- 06040009
- Active_Leases
- Counties
- 36 FT CONTOUR
- 06040009_02_15_06
- DOQQ2004



TRACT 38201 - Lafayette and St. Martin Parishes, Louisiana

All of the lands now or formerly constituting the beds and bottoms of all water bodies of every nature and description the title of which vests in the State of Louisiana, together with all islands arising therein and other lands formed by accretion or by reliction, where allowed by law, excepting tax adjudicated lands, and not presently under mineral lease and cross hatched on April 12, 2006, situated in Lafayette and St. Martin Parishes, Louisiana, and more particularly described as follows: Beginning at a point having Coordinates of X = 1,801,500.00 and Y = 548,000.00; thence North 370.00 feet to the Southeast corner of State Lease No. 18114 having Coordinates of X = 1,801,500.00 and Y = 548,370.00; thence North 9,230.00 feet along the East line of said State Lease No. 18114 to a point having Coordinates of X = 1,801,500.00 and Y = 557,600.00; thence East 13,589.25 feet to a point having Coordinates of X = 1,815,089.25 and Y = 557,600.00; thence South 9,600.00 feet to a point on the North line of State Lease No. 17367 having Coordinates of X = 1,815,089.25 and Y = 548,000.00; thence West 1,459.25 feet along the North line of said State Lease No. 17367 to its Northwest corner having Coordinates of X = 1,813,630.00 and Y = 548,000.00; thence West 12,130.00 feet to the point of beginning, containing approximately **26 acres**, all as more particularly outlined on a plat on file in the Office of Mineral Resources, Department of Natural Resources. All bearings, distances and coordinates are based on Louisiana Coordinate System of 1927, (North or South Zone), where applicable.

NOTE: The above description of the Tract nominated for lease has been provided and corrected, where required, exclusively by the nomination party. Any mineral lease selected from this Tract and awarded by the Louisiana State Mineral Board shall be without warranty of any kind, either express, implied, or statutory, including, but not limited to, the implied warranties of merchantability and fitness for a particular purpose. Should the mineral lease awarded by the Louisiana State Mineral Board be subsequently modified, cancelled or abrogated due to the existence of conflicting leases, operating agreements, private claims or other future obligations or conditions which may affect all or any portion of the leased Tract, it shall not relieve the Lessee of the obligation to pay any bonus due thereon to the Louisiana State Mineral Board, nor shall the Louisiana State Mineral Board be obligated to refund any consideration paid by the Lessor prior to such modification, cancellation, or abrogation, including, but not limited to, bonuses, rentals and royalties.

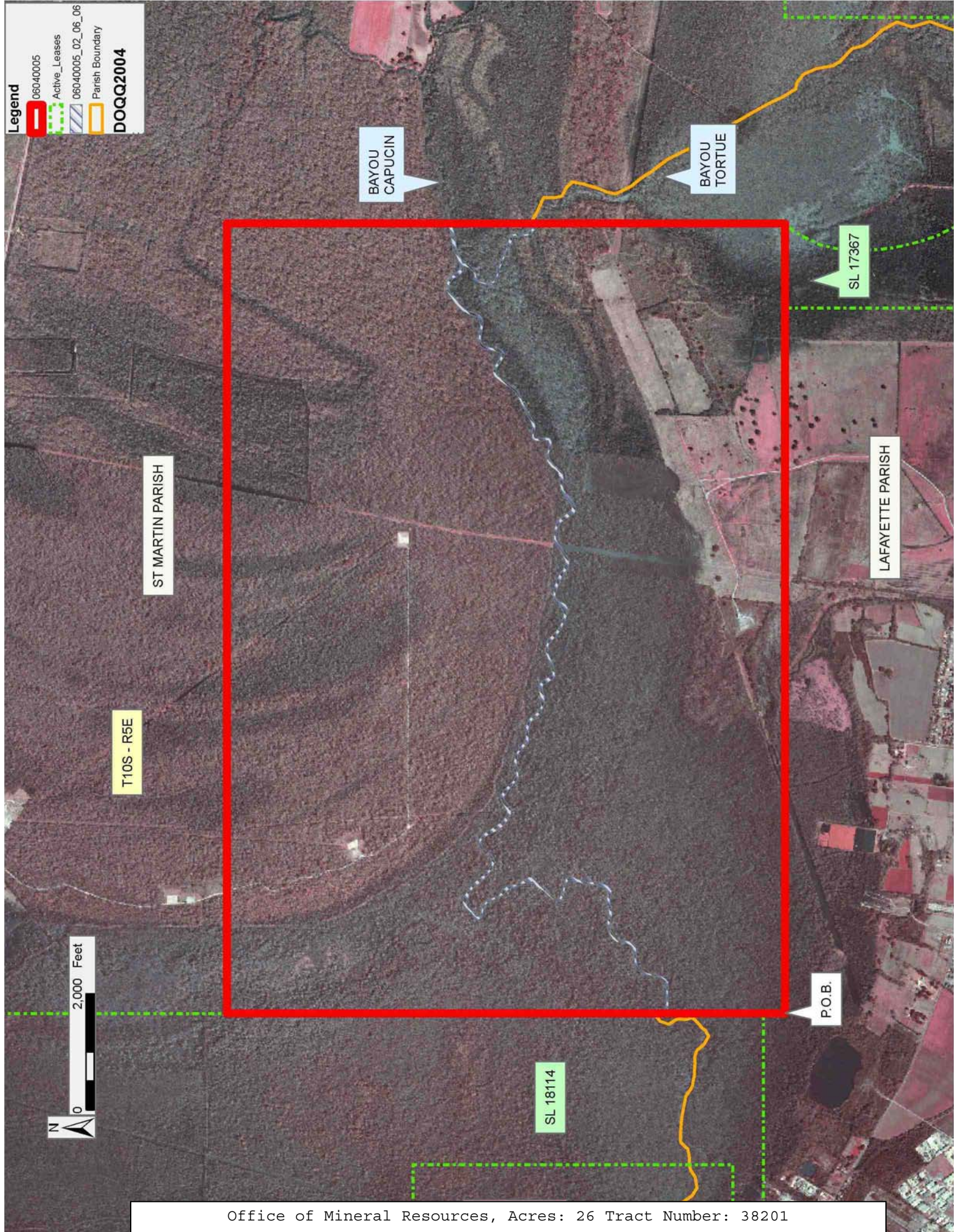
Applicant: M & S ENERGY PARTNERS

Bidder	Cash Payment	Price/Acre	Rental	Oil	Gas	Other

Legend

- 06040005
- Active_Leases
- 06040005_02_06_06
- Parish Boundary

DOQQ2004



ST MARTIN PARISH

T10S - R5E

BAYOU CAPUCIN

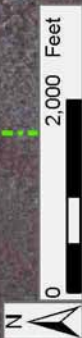
BAYOU TORTUE

SL 17367

LAFAYETTE PARISH

P.O.B.

SL 18114



TRACT 38202 - Calcasieu Parish, Louisiana

All of the lands now or formerly constituting the beds and bottoms of all water bodies of every nature and description the title of which vests in the State of Louisiana, together with all islands arising therein and other lands formed by accretion or by reliction, where allowed by law, excepting tax adjudicated lands, and not presently under mineral lease and cross hatched on April 12, 2006, situated in Calcasieu Parish, Louisiana, and more particularly described as follows: Beginning at a point having Coordinates of X = 1,336,100.00 and Y = 530,884.44; thence North 6,075.56 feet to a point having Coordinates of X = 1,336,100.00 and Y = 536,960.00; thence East 6,000.00 feet to a point having Coordinates of X = 1,342,100.00 and Y = 536,960.00; thence South 6,075.56 feet to a point having Coordinates of X = 1,342,100.00 and Y = 530,884.44; thence West 6,000.00 feet to the point of beginning, containing approximately **18 acres**, all as more particularly outlined on a plat on file in the Office of Mineral Resources, Department of Natural Resources. All bearings, distances and coordinates are based on Louisiana Coordinate System of 1927, (North or South Zone), where applicable.

NOTE: The above description of the Tract nominated for lease has been provided and corrected, where required, exclusively by the nomination party. Any mineral lease selected from this Tract and awarded by the Louisiana State Mineral Board shall be without warranty of any kind, either express, implied, or statutory, including, but not limited to, the implied warranties of merchantability and fitness for a particular purpose. Should the mineral lease awarded by the Louisiana State Mineral Board be subsequently modified, cancelled or abrogated due to the existence of conflicting leases, operating agreements, private claims or other future obligations or conditions which may affect all or any portion of the leased Tract, it shall not relieve the Lessee of the obligation to pay any bonus due thereon to the Louisiana State Mineral Board, nor shall the Louisiana State Mineral Board be obligated to refund any consideration paid by the Lessor prior to such modification, cancellation, or abrogation, including, but not limited to, bonuses, rentals and royalties.

NOTE: The State of Louisiana does hereby reserve, and this lease shall be subject to, the imprescriptible right of surface use in the nature of a servitude in favor of the Department of Natural Resources, including its Offices and Commissions, for the sole purpose of implementing, constructing, servicing and maintaining approved coastal zone management and/or restoration projects. Utilization of any and all rights derived under this lease by the mineral lessee, its agents, successors or assigns, shall not interfere with nor hinder the reasonable surface use by the Department of Natural Resources, its Offices or Commissions, as herein above reserved.

Applicant: LIDDELL ENERGY, INC.

Bidder	Cash Payment	Price/Acre	Rental	Oil	Gas	Other

Legend

-  060-40007
-  Counties
-  060-40007_02_06_2006

DOQQ2004



BAYOU
CHOUPIQUE



P.O.B.

CALCASIEU PARISH

T11S - R10W

T11S - R11W

TRACT 38203 - Portion of Block 26, Chandeleur Sound Area Addition, Revised, St. Bernard Parish, Louisiana

All of the lands now or formerly constituting the beds and bottoms of all water bodies of every nature and description the title of which vests in the State of Louisiana, together with all islands arising therein and other lands formed by accretion or by reliction, where allowed by law, excepting tax adjudicated lands, and not presently under mineral lease and cross hatched on April 12, 2006, situated in St. Bernard Parish, Louisiana, and more particularly described as follows: Beginning at a point on the North line of Block 26, Chandeleur Sound Area Addition, Revised having Coordinates of X = 2,672,225.00 and Y = 514,080.00; thence South 14,750.00 feet to a point on the South line of said Block 26 having Coordinates of X = 2,672,225.00 and Y = 499,330.00; thence West 3,102.00 feet along the South line of said Block 26 to a point also being the Southeast corner of State Lease No. 18714 having Coordinates of X = 2,669,123.00 and Y = 499,330.00; thence along the boundary of said State Lease No. 18714 the following courses: North 3,207.50 feet and West 4,273.00 feet to its Northwest corner, also being a point on the West line of said Block 26 having Coordinates of X = 2,664,850.00 and Y = 502,537.50; thence North 11,542.50 feet along the West line of said Block 26 to its Northwest corner having Coordinates of X = 2,664,850.00 and Y = 514,080.00; thence East 7,375.00 feet along the North line of said Block 26 to the point of beginning, containing approximately **1,269 acres**, all as more particularly outlined on a plat on file in the Office of Mineral Resources, Department of Natural Resources. All bearings, distances and coordinates are based on Louisiana Coordinate System of 1927, (North or South Zone), where applicable.

NOTE: The above description of the Tract nominated for lease has been provided and corrected, where required, exclusively by the nomination party. Any mineral lease selected from this Tract and awarded by the Louisiana State Mineral Board shall be without warranty of any kind, either express, implied, or statutory, including, but not limited to, the implied warranties of merchantability and fitness for a particular purpose. Should the mineral lease awarded by the Louisiana State Mineral Board be subsequently modified, cancelled or abrogated due to the existence of conflicting leases, operating agreements, private claims or other future obligations or conditions which may affect all or any portion of the leased Tract, it shall not relieve the Lessee of the obligation to pay any bonus due thereon to the Louisiana State Mineral Board, nor shall the Louisiana State Mineral Board be obligated to refund any consideration paid by the Lessor prior to such modification, cancellation, or abrogation, including, but not limited to, bonuses, rentals and royalties.

NOTE: The Office of Mineral Resources will require a minimum bonus of \$230 per acre and a minimum royalty of 23%.

NOTE: The State of Louisiana does hereby reserve, and this lease shall be subject to, the imprescriptible right of surface use in the nature of a

servitude in favor of the Department of Natural Resources, including its Offices and Commissions, for the sole purpose of implementing, constructing, servicing and maintaining approved coastal zone management and/or restoration projects. Utilization of any and all rights derived under this lease by the mineral lessee, its agents, successors or assigns, shall not interfere with nor hinder the reasonable surface use by the Department of Natural Resources, its Offices or Commissions, as herein above reserved.

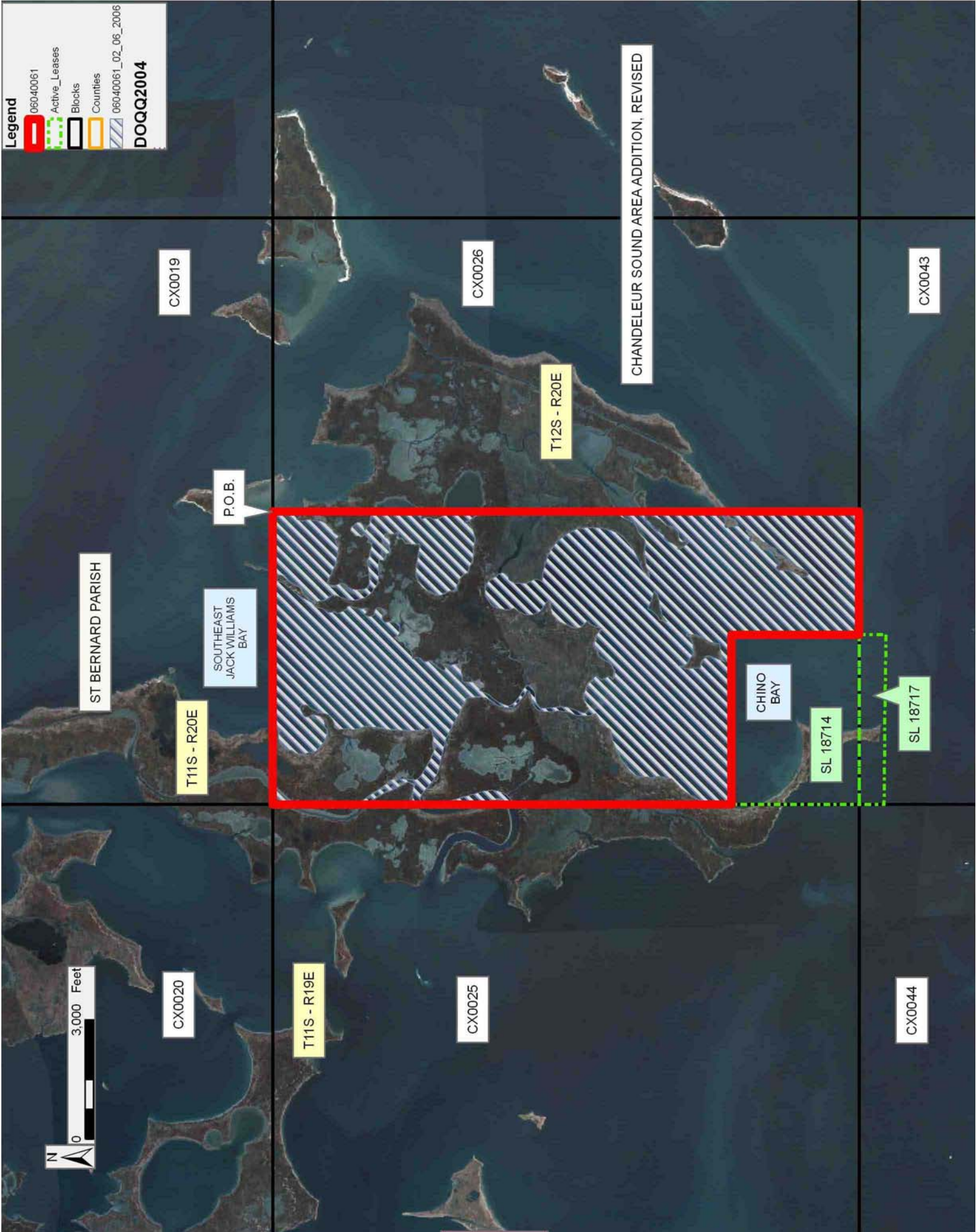
NOTE: The Department of Wildlife and Fisheries has designated certain areas in the coastal waters of the State of Louisiana as Oyster Seed Bed Areas. The exact location of those Seed Bed Areas must be obtained from the Department of Wildlife and Fisheries and any work done under a mineral lease from the State of Louisiana may necessarily be conducted in conformity with the rules and regulations promulgated by the said Department of Wildlife and Fisheries for Oyster Seed Bed Areas.

Applicant: KARE-SUE ENERGY, INC.

Bidder	Cash Payment	Price/Acre	Rental	Oil	Gas	Other

Legend

- 06040061
- Active_Leases
- Blocks
- Counties
- 06040061_02_06_2006
- DOQQ2004**



TRACT 38204 - Portion of Block 26, Chandeleur Sound Area Addition, Revised, St. Bernard Parish, Louisiana

All of the lands now or formerly constituting the beds and bottoms of all water bodies of every nature and description the title of which vests in the State of Louisiana, together with all islands arising therein and other lands formed by accretion or by reliction, where allowed by law, excepting tax adjudicated lands, and not presently under mineral lease and cross hatched on April 12, 2006, situated in St. Bernard Parish, Louisiana, and more particularly described as follows: Beginning at a point on the North line of Block 26, Chandeleur Sound Area Addition, Revised having Coordinates of X = 2,672,225.00 and Y = 514,080.00; thence East 7,375.00 feet along the North line of said Block 26 to its Northeast corner having Coordinates of X = 2,679,600.00 and Y = 514,080.00; thence South 12,316.00 feet along the East line of said Block 26 to a point also being the Northeast corner of State Lease No. 18715 having Coordinates of X = 2,679,600.00 and Y = 501,764.00; thence along the boundary of said State Lease No. 18715 the following courses: West 2,243.00 feet and South 2,434.00 feet to its Southwest corner also being a point on the South line of said Block 26 having Coordinates of X = 2,677,357.00 and Y = 499,330.00; thence West 5,132.00 feet along the South line of said Block 26 to a point having Coordinates of X = 2,672,225.00 and Y = 499,330.00; thence North 14,750.00 feet to the point of beginning, containing approximately **1,630 acres**, all as more particularly outlined on a plat on file in the Office of Mineral Resources, Department of Natural Resources. All bearings, distances and coordinates are based on Louisiana Coordinate System of 1927, (North or South Zone), where applicable.

NOTE: The above description of the Tract nominated for lease has been provided and corrected, where required, exclusively by the nomination party. Any mineral lease selected from this Tract and awarded by the Louisiana State Mineral Board shall be without warranty of any kind, either express, implied, or statutory, including, but not limited to, the implied warranties of merchantability and fitness for a particular purpose. Should the mineral lease awarded by the Louisiana State Mineral Board be subsequently modified, cancelled or abrogated due to the existence of conflicting leases, operating agreements, private claims or other future obligations or conditions which may affect all or any portion of the leased Tract, it shall not relieve the Lessee of the obligation to pay any bonus due thereon to the Louisiana State Mineral Board, nor shall the Louisiana State Mineral Board be obligated to refund any consideration paid by the Lessor prior to such modification, cancellation, or abrogation, including, but not limited to, bonuses, rentals and royalties.

NOTE: The Office of Mineral Resources will require a minimum bonus of \$230 per acre and a minimum royalty of 23%.

NOTE: The State of Louisiana does hereby reserve, and this lease shall be subject to, the imprescriptible right of surface use in the nature of a servitude in favor of the Department of Natural Resources, including its

Offices and Commissions, for the sole purpose of implementing, constructing, servicing and maintaining approved coastal zone management and/or restoration projects. Utilization of any and all rights derived under this lease by the mineral lessee, its agents, successors or assigns, shall not interfere with nor hinder the reasonable surface use by the Department of Natural Resources, its Offices or Commissions, as herein above reserved.

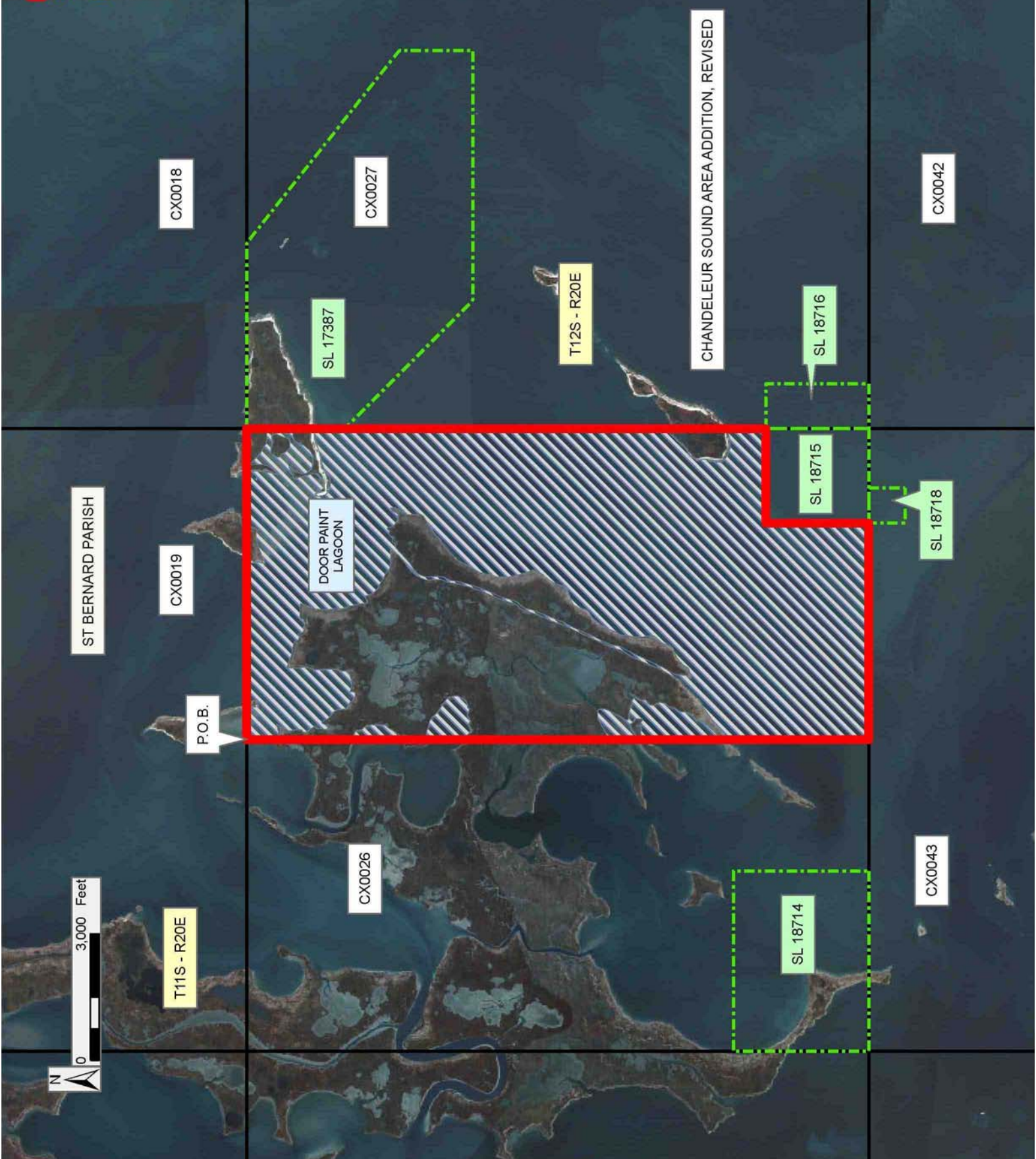
NOTE: The Department of Wildlife and Fisheries has designated certain areas in the coastal waters of the State of Louisiana as Oyster Seed Bed Areas. The exact location of those Seed Bed Areas must be obtained from the Department of Wildlife and Fisheries and any work done under a mineral lease from the State of Louisiana may necessarily be conducted in conformity with the rules and regulations promulgated by the said Department of Wildlife and Fisheries for Oyster Seed Bed Areas.

Applicant: KARE-SUE ENERGY, INC.

Bidder	Cash Payment	Price/Acre	Rental	Oil	Gas	Other

Legend

- 06040060
- ACTIVE_LEASES
- Blocks
- Counties
- 06040060_02_06_06
- DOQQ2004**



0 3,000 Feet



TRACT 38205 - Calcasieu Parish, Louisiana

All of the lands now or formerly constituting the beds and bottoms of all water bodies of every nature and description the title of which vests in the State of Louisiana, together with all islands arising therein and other lands formed by accretion or by reliction, where allowed by law, excepting tax adjudicated lands, and not presently under mineral lease and cross hatched on April 12, 2006, situated in Calcasieu Parish, Louisiana, and more particularly described as follows: Beginning at a point having Coordinates of X = 1,336,100.00 and Y = 530,884.44; thence East 5,000.00 feet to a point having Coordinates of X = 1,341,100.00 and Y = 530,884.44; thence South 6,084.44 feet to a point having Coordinates of X = 1,341,100.00 and Y = 524,800.00; thence West 5,000.00 feet to a point having Coordinates of X = 1,336,100.00 and Y = 524,800.00; thence North 6,084.44 feet to the point of beginning, containing approximately **12 acres**, all as more particularly outlined on a plat on file in the Office of Mineral Resources, Department of Natural Resources. All bearings, distances and coordinates are based on Louisiana Coordinate System of 1927, (North or South Zone), where applicable.

NOTE: The above description of the Tract nominated for lease has been provided and corrected, where required, exclusively by the nomination party. Any mineral lease selected from this Tract and awarded by the Louisiana State Mineral Board shall be without warranty of any kind, either express, implied, or statutory, including, but not limited to, the implied warranties of merchantability and fitness for a particular purpose. Should the mineral lease awarded by the Louisiana State Mineral Board be subsequently modified, cancelled or abrogated due to the existence of conflicting leases, operating agreements, private claims or other future obligations or conditions which may affect all or any portion of the leased Tract, it shall not relieve the Lessee of the obligation to pay any bonus due thereon to the Louisiana State Mineral Board, nor shall the Louisiana State Mineral Board be obligated to refund any consideration paid by the Lessor prior to such modification, cancellation, or abrogation, including, but not limited to, bonuses, rentals and royalties.

NOTE: The State of Louisiana does hereby reserve, and this lease shall be subject to, the imprescriptible right of surface use in the nature of a servitude in favor of the Department of Natural Resources, including its Offices and Commissions, for the sole purpose of implementing, constructing, servicing and maintaining approved coastal zone management and/or restoration projects. Utilization of any and all rights derived under this lease by the mineral lessee, its agents, successors or assigns, shall not interfere with nor hinder the reasonable surface use by the Department of Natural Resources, its Offices or Commissions, as herein above reserved.

Applicant: LIDDELL ENERGY, INC.

Bidder	Cash Payment	Price/Acre	Rental	Oil	Gas	Other

Legend

- 06040008
- Counties
- 06040008_02_06_2006
- DOQQ2004**



CALCASIEU PARISH

BAYOU
CHOUPIQUE

P.O.B.

T11S - R10W

T11S - R11W



TRACT 38206 - Calcasieu Parish, Louisiana

All of the lands now or formerly constituting the beds and bottoms of all water bodies of every nature and description the title of which vests in the State of Louisiana, together with all islands arising therein and other lands formed by accretion or by reliction, where allowed by law, excepting tax adjudicated lands, and not presently under mineral lease and cross hatched on April 12, 2006, situated in Calcasieu Parish, Louisiana, and more particularly described as follows: Beginning at the Northwest corner of State Lease No. 18529 having Coordinates of X = 1,346,123.32 and Y = 530,884.44; thence South 6,084.44 feet along the West line of said State Lease No. 18529 to a point having Coordinates of X = 1,346,123.32 and Y = 524,800.00; thence West 5,023.32 feet to a point having Coordinates of X = 1,341,100.00 and Y = 524,800.00; thence North 6,084.44 feet to a point having Coordinates of X = 1,341,100.00 and Y = 530,884.44; thence East 5,023.32 feet to the point of beginning, containing approximately **21 acres**, all as more particularly outlined on a plat on file in the Office of Mineral Resources, Department of Natural Resources. All bearings, distances and coordinates are based on Louisiana Coordinate System of 1927, (North or South Zone), where applicable.

NOTE: The above description of the Tract nominated for lease has been provided and corrected, where required, exclusively by the nomination party. Any mineral lease selected from this Tract and awarded by the Louisiana State Mineral Board shall be without warranty of any kind, either express, implied, or statutory, including, but not limited to, the implied warranties of merchantability and fitness for a particular purpose. Should the mineral lease awarded by the Louisiana State Mineral Board be subsequently modified, cancelled or abrogated due to the existence of conflicting leases, operating agreements, private claims or other future obligations or conditions which may affect all or any portion of the leased Tract, it shall not relieve the Lessee of the obligation to pay any bonus due thereon to the Louisiana State Mineral Board, nor shall the Louisiana State Mineral Board be obligated to refund any consideration paid by the Lessor prior to such modification, cancellation, or abrogation, including, but not limited to, bonuses, rentals and royalties.

NOTE: The State of Louisiana does hereby reserve, and this lease shall be subject to, the imprescriptible right of surface use in the nature of a servitude in favor of the Department of Natural Resources, including its Offices and Commissions, for the sole purpose of implementing, constructing, servicing and maintaining approved coastal zone management and/or restoration projects. Utilization of any and all rights derived under this lease by the mineral lessee, its agents, successors or assigns, shall not interfere with nor hinder the reasonable surface use by the Department of Natural Resources, its Offices or Commissions, as herein above reserved.

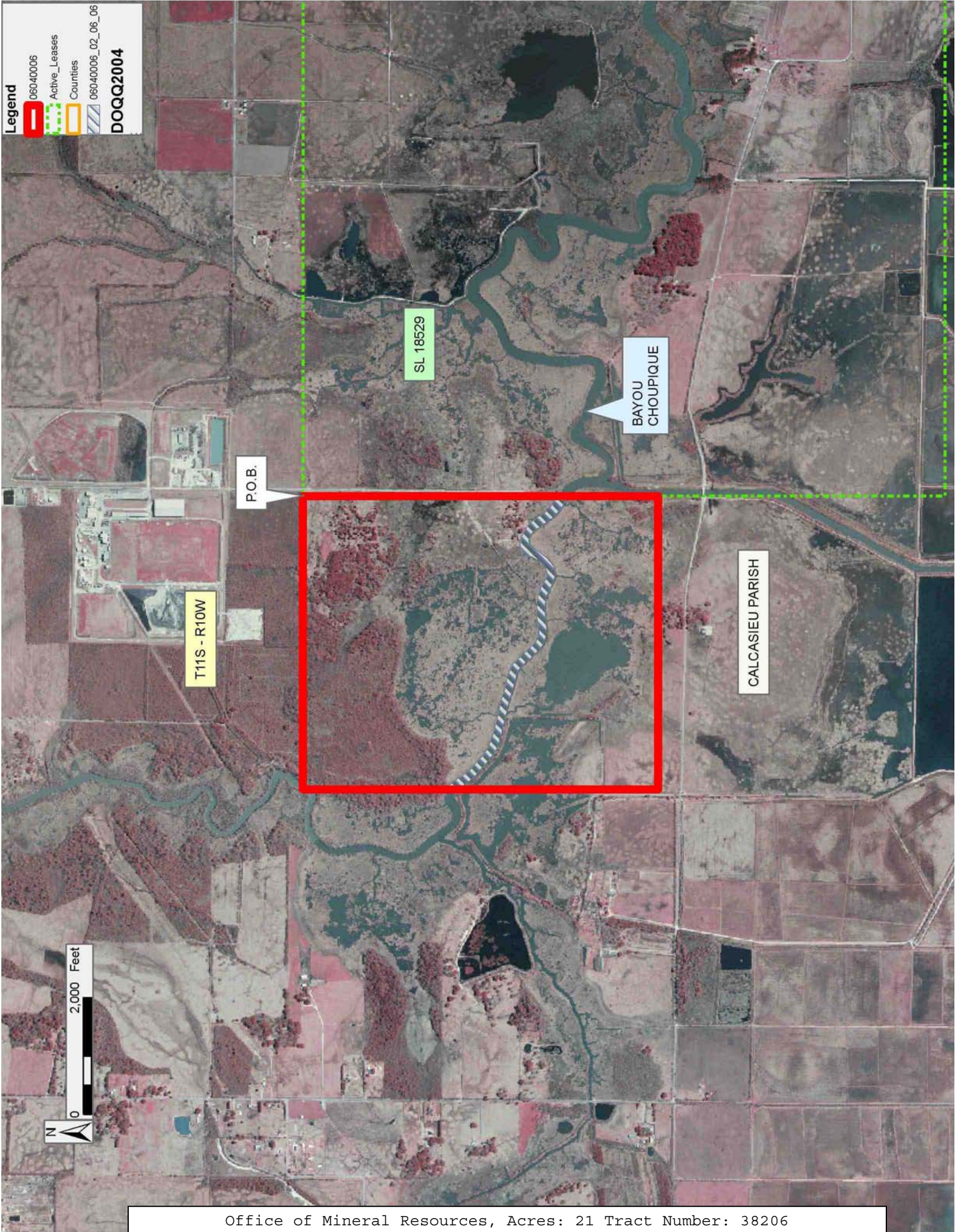
Applicant: LIDDELL ENERGY, INC.

Bidder	Cash Payment	Price/Acre	Rental	Oil	Gas	Other

Legend

- 06040006
- Active_Leases
- Counties
- 06040006_02_06_06

DOQQ2004



TRACT 38207 - Portion of Blocks 25, and 44, Chandeleur Sound Area Addition, Revised, St. Bernard Parish, Louisiana

All of the lands now or formerly constituting the beds and bottoms of all water bodies of every nature and description the title of which vests in the State of Louisiana, together with all islands arising therein and other lands formed by accretion or by reliction, where allowed by law, excepting tax adjudicated lands, and not presently under mineral lease and cross hatched on April 12, 2006, situated in St. Bernard Parish, Louisiana, and more particularly described as follows: Beginning at a point on the East line of Block 25, Chandeleur Sound Area Addition, Revised having Coordinates of X = 2,664,850.00 and Y = 506,705.00; thence South 7,988.92 feet along the East line of said Block 25 to its Southeast corner, also being the Northeast corner of Block 44, Chandeleur Sound Area Addition, Revised having Coordinates of X = 2,664,850.00 and Y = 498,716.08; thence South 2,891.81 feet along the East line of said Block 44 to a point having Coordinates of X = 2,664,850.00 and Y = 495,824.28; thence West 2,678.19 feet to the Southeast corner of State Lease No. 18310 having Coordinates of X = 2,662,171.81 and Y = 495,824.28; thence North 3,505.72 feet along the East line of said State Lease No. 18310 to its Northeast corner, also being the Southeast corner of State Lease No. 18305 having Coordinates of X = 2,662,171.81 and Y = 499,330.00; thence along the boundary of said State Lease No. 18305 the following courses: North 669.28 feet, West 4,175.00 feet, and South 669.28 feet to its Southwest corner, also being the Northwest corner of said State Lease No. 18310 having Coordinates of X = 2,657,996.81 and Y = 499,330.00; thence South 3,505.72 feet along the West line of said State Lease No. 18310 to its Southwest corner having Coordinates of X = 2,657,996.81 and Y = 495,824.28; thence West 2,372.86 feet to a point having Coordinates X = 2,655,623.95 and Y = 495,824.28; thence North 379.08 feet to the Southeast corner of State Lease No. 18311 having Coordinates of X = 2,655,623.95 and Y = 496,203.36; thence along the boundary of said State Lease No. 18311 the following courses: North 3,126.64 feet and West 1,352.21 feet to a point on the North line of said State Lease No. 18311, also being the Southeast corner of State Lease No. 18304 having Coordinates of X = 2,654,271.74 and Y = 499,330.00; thence along the boundary of said State Lease No. 18304 the following courses: North 3,211.50 feet and West 4,171.74 feet to its Northwest corner also being a point on the West line of said Block 25 having Coordinates of X = 2,650,100.00 and Y = 502,541.50; thence North 888.13 feet along the West line of said Block 25 to a point also being the Southwest corner of State Lease No. 18306 having Coordinates of X = 2,650,100.00 and Y = 503,429.63; thence along the boundary of said State Lease No. 18306 the following courses: North 89 degrees 47 minutes 03 seconds East 1,320.90 feet, and North 02 degrees 24 minutes 22 seconds West 3,273.27 feet to its Northeast corner having Coordinates of X = 2,651,283.47 and Y = 506,705.00; thence East 13,566.53 feet to the point of beginning, containing approximately **2,221 acres**, all as more particularly outlined on a plat on file in the Office of Mineral Resources, Department of Natural Resources. All bearings, distances and

coordinates are based on Louisiana Coordinate System of 1927, (North or South Zone), where applicable.

NOTE: The above description of the Tract nominated for lease has been provided and corrected, where required, exclusively by the nomination party. Any mineral lease selected from this Tract and awarded by the Louisiana State Mineral Board shall be without warranty of any kind, either express, implied, or statutory, including, but not limited to, the implied warranties of merchantability and fitness for a particular purpose. Should the mineral lease awarded by the Louisiana State Mineral Board be subsequently modified, cancelled or abrogated due to the existence of conflicting leases, operating agreements, private claims or other future obligations or conditions which may affect all or any portion of the leased Tract, it shall not relieve the Lessee of the obligation to pay any bonus due thereon to the Louisiana State Mineral Board, nor shall the Louisiana State Mineral Board be obligated to refund any consideration paid by the Lessor prior to such modification, cancellation, or abrogation, including, but not limited to, bonuses, rentals and royalties.

NOTE: The Office of Mineral Resources will require a minimum bonus of \$230 per acre and a minimum royalty of 23%.

NOTE: The State of Louisiana does hereby reserve, and this lease shall be subject to, the imprescriptible right of surface use in the nature of a servitude in favor of the Department of Natural Resources, including its Offices and Commissions, for the sole purpose of implementing, constructing, servicing and maintaining approved coastal zone management and/or restoration projects. Utilization of any and all rights derived under this lease by the mineral lessee, its agents, successors or assigns, shall not interfere with nor hinder the reasonable surface use by the Department of Natural Resources, its Offices or Commissions, as herein above reserved.

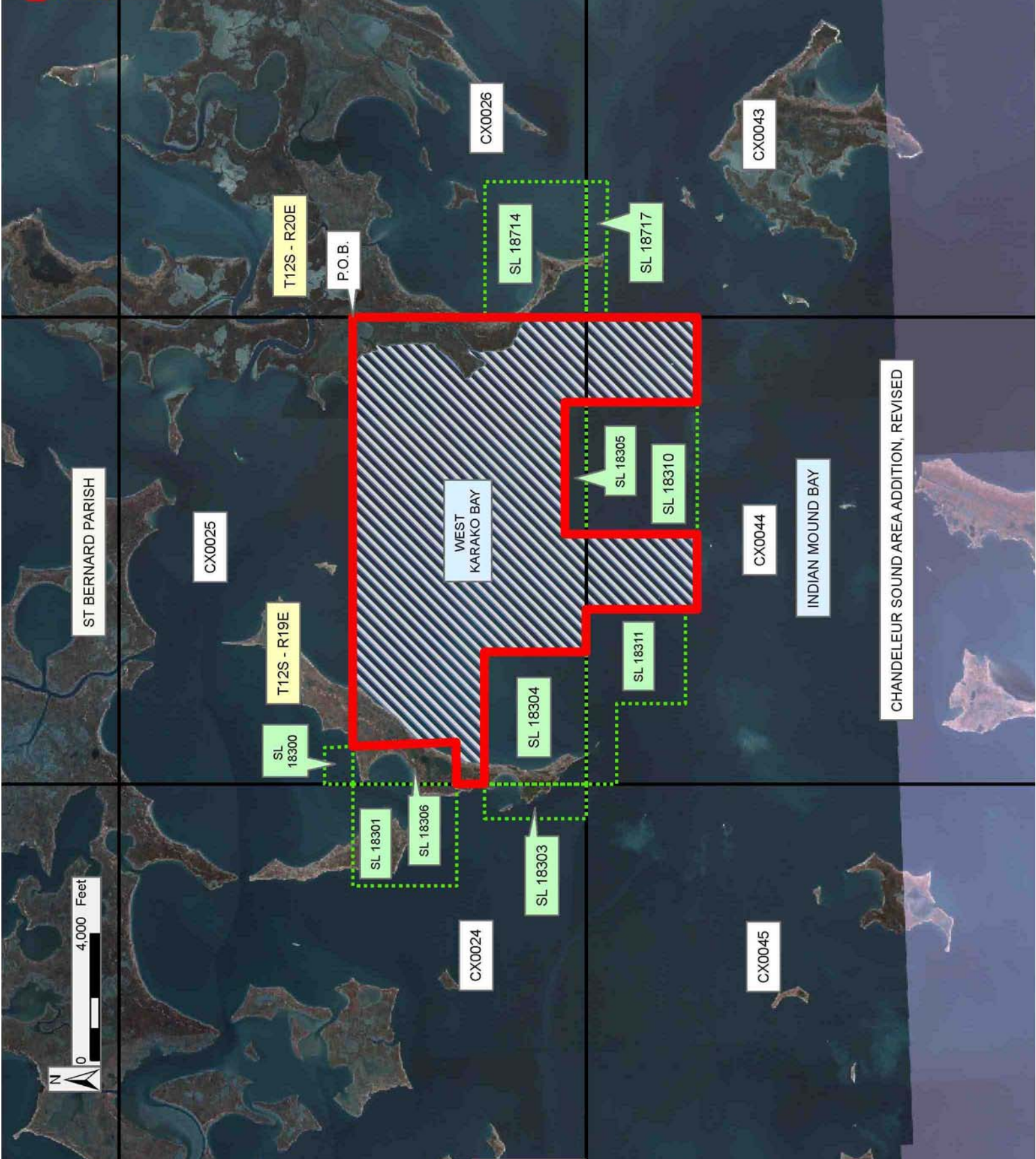
NOTE: The Department of Wildlife and Fisheries has designated certain areas in the coastal waters of the State of Louisiana as Oyster Seed Bed Areas. The exact location of those Seed Bed Areas must be obtained from the Department of Wildlife and Fisheries and any work done under a mineral lease from the State of Louisiana may necessarily be conducted in conformity with the rules and regulations promulgated by the said Department of Wildlife and Fisheries for Oyster Seed Bed Areas.

Applicant: KARE-SUE ENERGY, INC.

Bidder	Cash Payment	Price/Acre	Rental	Oil	Gas	Other

Legend

- 06040062
- Active_Leases
- Blocks
- Counties
- 06040062_02_06_06
- DOQQ2004**



CHANDELEUR SOUND AREA ADDITION, REVISED

TRACT 38208 - Portion of Blocks 42, and 43, Chandeleur Sound Area Addition, Revised, St. Bernard Parish, Louisiana

All of the lands now or formerly constituting the beds and bottoms of all water bodies of every nature and description the title of which vests in the State of Louisiana, together with all islands arising therein and other lands formed by accretion or by reliction, where allowed by law, excepting tax adjudicated lands, and not presently under mineral lease and cross hatched on April 12, 2006, situated in St. Bernard Parish, Louisiana, and more particularly described as follows: Beginning at a point on the North line of Block 42, Chandeleur Sound Area Addition, Revised having Coordinates of X = 2,686,975.00 and Y = 499,330.00; thence South 6,795.00 feet to a point having Coordinates of X = 2,686,975.00 and Y = 492,535.00; thence West 12,388.08 feet to a point on the East line of State Lease No. 18307 having Coordinates of X = 2,674,586.92 and Y = 492,535.00; thence along the boundary of said State Lease No. 18307 the following courses: North 00 degrees 07 minutes 28 seconds West 324.31 feet, South 86 degrees 43 minutes 58 seconds West 1,491.50 feet, North 01 degrees 38 minutes 06 seconds West 5,846.22 feet and North 89 degrees 18 minutes 20 seconds West 3,807.60 feet to a point on the North line of said State Lease No. 18307 also being the Southeast corner of State Lease No. 18317 having Coordinates of X = 2,669,123.00 and Y = 498,664.29; thence North 665.71 feet along the East line of said State Lease No. 18317 to its Northeast corner also being a point on the North line of Block 43, Chandeleur Sound Area Addition, Revised having Coordinates of X = 2,669,123.00 and Y = 499,330.00; thence East 8,234.00 feet along the North line of said Block 43 to the Northwest corner of State Lease No. 18718 having Coordinates of X = 2,677,357.00 and Y = 499,330.00; thence along the boundary of said State Lease No. 18718 the following courses: South 866.00 feet and East 829.00 feet to its Southeast corner, also being the Southwest corner of State Lease No. 18719 having Coordinates of 2,678,186.00 and Y = 498,464.00; thence along the boundary of said State Lease No. 18719 the following courses: East 2,471.00 feet and North 866.00 feet to its Northeast corner also being a point on the North line of said Block 42 having Coordinates of X = 2,680,657.00 and Y = 499,330.00; thence East 6,318.00 feet along the North line of said Block 42 to the point of beginning, **LESS AND EXCEPT** that portion of State Lease No. 18373 that lies within the above described tract, and more particularly described as follows: Beginning at the Southwest corner of State Lease No. 18373 having Coordinates of X = 2,681,275.19 and Y = 493,030.19; thence along the boundary of said State Lease No. 18373 the following courses: North 2,951.61 feet, East 2,951.61 feet, South 2,951.61 and West 2,951.61 feet to its Southwest corner, also being the point of beginning, containing approximately **1,963.71 acres**, all as more particularly outlined on a plat on file in the Office of Mineral Resources, Department of Natural Resources. All bearings, distances and coordinates are based on Louisiana Coordinate System of 1927, (North or South Zone), where applicable.

NOTE: The above description of the Tract nominated for lease has been provided and corrected, where required, exclusively by the nomination

party. Any mineral lease selected from this Tract and awarded by the Louisiana State Mineral Board shall be without warranty of any kind, either express, implied, or statutory, including, but not limited to, the implied warranties of merchantability and fitness for a particular purpose. Should the mineral lease awarded by the Louisiana State Mineral Board be subsequently modified, cancelled or abrogated due to the existence of conflicting leases, operating agreements, private claims or other future obligations or conditions which may affect all or any portion of the leased Tract, it shall not relieve the Lessee of the obligation to pay any bonus due thereon to the Louisiana State Mineral Board, nor shall the Louisiana State Mineral Board be obligated to refund any consideration paid by the Lessor prior to such modification, cancellation, or abrogation, including, but not limited to, bonuses, rentals and royalties.

NOTE: The Office of Mineral Resources will require a minimum bonus of \$230 per acre and a minimum royalty of 23%.

NOTE: The State of Louisiana does hereby reserve, and this lease shall be subject to, the imprescriptible right of surface use in the nature of a servitude in favor of the Department of Natural Resources, including its Offices and Commissions, for the sole purpose of implementing, constructing, servicing and maintaining approved coastal zone management and/or restoration projects. Utilization of any and all rights derived under this lease by the mineral lessee, its agents, successors or assigns, shall not interfere with nor hinder the reasonable surface use by the Department of Natural Resources, its Offices or Commissions, as herein above reserved.

NOTE: The Department of Wildlife and Fisheries has designated certain areas in the coastal waters of the State of Louisiana as Oyster Seed Bed Areas. The exact location of those Seed Bed Areas must be obtained from the Department of Wildlife and Fisheries and any work done under a mineral lease from the State of Louisiana may necessarily be conducted in conformity with the rules and regulations promulgated by the said Department of Wildlife and Fisheries for Oyster Seed Bed Areas.

Applicant: KARE-SUE ENERGY, INC.

Bidder	Cash Payment	Price/Acre	Rental	Oil	Gas	Other

Legend

- 06040056
- ACTIVE_LEASES
- Blocks
- Counties

ST BERNARD PARISH

CX0027

P.O.B.

CHANDELEUR SOUND
AREA ADDITION, REVISED

CX0042

SL 18716

SL 18719

SL 18373

SL 18715

SL 18718

SL 18315

T12S - R20E

CX0026

SL 18720

SL 18317

CX0043



SL 18307

SL 18714

SL 18717

SL 18316

TRACT 38209 - Portion of Block 43, Chandeleur Sound Area Addition, Revised, St. Bernard Parish, Louisiana

All of the lands now or formerly constituting the beds and bottoms of all water bodies of every nature and description the title of which vests in the State of Louisiana, together with all islands arising therein and other lands formed by accretion or by reliction, where allowed by law, excepting tax adjudicated lands, and not presently under mineral lease and cross hatched on April 12, 2006, situated in St. Bernard Parish, Louisiana, and more particularly described as follows: Beginning at a point on the West line of Block 43, Chandeleur Sound Area Addition, Revised having Coordinates of X = 2,664,850.00 and Y = 489,324.28; thence North 9,391.81 feet to a point on the West line of said Block 43 also being the Southwest corner of State Lease No. 18317 having Coordinates of X = 2,664,850.00 and Y = 498,716.08; thence South 89 degrees 18 minutes 20 seconds East 2,275.67 feet along the South line of said State Lease No. 18317 to a point also being the Northwest corner of State Lease No. 18307 having Coordinates of X = 2,667,125.50 and Y = 498,688.50; thence along the boundary of said State Lease No. 18307 the following courses: South 6,733.50 feet and East 2,417.34 feet to a point on the South line of said State Lease No. 18307, also being the Northwest corner of State Lease No. 18317 having Coordinates of X = 2,669,542.84 and Y = 491,955.00; thence along the boundary of said State Lease No. 18317 the following courses: South 00 degrees 05 minutes 52 seconds East 3,370.50 feet and East 4,172.41 feet to a point on the South line of said State Lease No. 18317 having Coordinates of X = 2,673,721.00 and Y = 488,584.50; thence South 1,776.50 feet to the Northwest corner of State Lease No. 18720 having Coordinates of X = 2,673,721.00 and Y = 486,808.00; thence South 2,228.00 feet along the West line of said State Lease No. 18720 to a point, also being a point on the South line of said Block 43 having Coordinates of X = 2,673,721.00 and Y = 484,580.00; thence West 6,246.00 feet along the South line of said Block 43 to a point having Coordinates of X = 2,667,475.00 and Y = 484,580.00; thence North 4,744.28 feet to a point having Coordinates of X = 2,667,475.00 and Y = 489,324.28; thence West 2,625.00 feet to the point of beginning, containing approximately **1,226 acres**, all as more particularly outlined on a plat on file in the Office of Mineral Resources, Department of Natural Resources. All bearings, distances and coordinates are based on Louisiana Coordinate System of 1927, (North or South Zone), where applicable.

NOTE: The above description of the Tract nominated for lease has been provided and corrected, where required, exclusively by the nomination party. Any mineral lease selected from this Tract and awarded by the Louisiana State Mineral Board shall be without warranty of any kind, either express, implied, or statutory, including, but not limited to, the implied warranties of merchantability and fitness for a particular purpose. Should the mineral lease awarded by the Louisiana State Mineral Board be subsequently modified, cancelled or abrogated due to the existence of conflicting leases, operating agreements, private claims or other future obligations or conditions which may affect all or any portion

of the leased Tract, it shall not relieve the Lessee of the obligation to pay any bonus due thereon to the Louisiana State Mineral Board, nor shall the Louisiana State Mineral Board be obligated to refund any consideration paid by the Lessor prior to such modification, cancellation, or abrogation, including, but not limited to, bonuses, rentals and royalties.

NOTE: The Office of Mineral Resources will require a minimum bonus of \$230 per acre and a minimum royalty of 23%.

NOTE: The State of Louisiana does hereby reserve, and this lease shall be subject to, the imprescriptible right of surface use in the nature of a servitude in favor of the Department of Natural Resources, including its Offices and Commissions, for the sole purpose of implementing, constructing, servicing and maintaining approved coastal zone management and/or restoration projects. Utilization of any and all rights derived under this lease by the mineral lessee, its agents, successors or assigns, shall not interfere with nor hinder the reasonable surface use by the Department of Natural Resources, its Offices or Commissions, as herein above reserved.

NOTE: The Department of Wildlife and Fisheries has designated certain areas in the coastal waters of the State of Louisiana as Oyster Seed Bed Areas. The exact location of those Seed Bed Areas must be obtained from the Department of Wildlife and Fisheries and any work done under a mineral lease from the State of Louisiana may necessarily be conducted in conformity with the rules and regulations promulgated by the said Department of Wildlife and Fisheries for Oyster Seed Bed Areas.

Applicant: KARE-SUE ENERGY, INC.

Bidder	Cash Payment	Price/Acre	Rental	Oil	Gas	Other

Legend

- 06040068
- Active_Leases
- Blocks
- Counties
- 06040068_02_03_2006

DOQQ2004

