

TRACT 37294 - Caldwell and Ouachita Parish School Boards - Caldwell and Ouachita Parishes, Louisiana

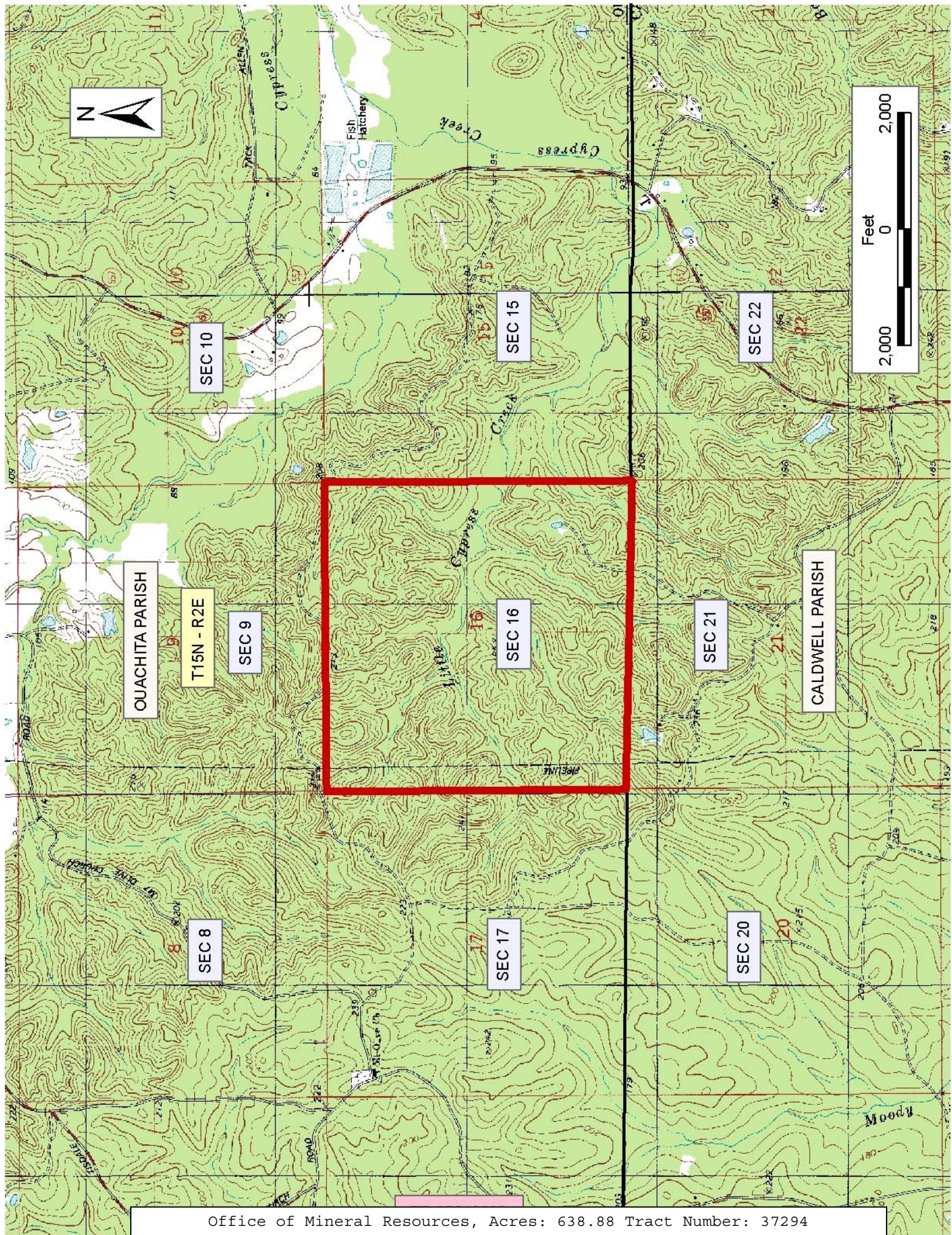
The State Mineral Board acting on behalf of the Caldwell and Ouachita Parish School Boards, pursuant to Resolution(s) adopted by that (those) body(ies) and in accordance with Louisiana Revised Statutes 30:121-136 and 151-156, as amended, and Article XIV, Section 16(A)(9) and (B) of the Louisiana Constitution of 1974, as same may be continued and promulgated in proper statutory form and, further, amended from time to time, advertises the lands not under mineral lease on April 13, 2005, excluding the beds and bottoms of all navigable water bodies located within the following: All of Section 16, Township 15 North, Range 2 East, Ouachita Parish, Louisiana containing approximately **638.88 acres**, all as more particularly outlined on a plat on file in the Office of Mineral Resources, Department of Natural Resources. All bearings, distances and coordinates are based on Louisiana Coordinate System of 1927, (North or South Zone).

NOTE: The above description of the Tract nominated for lease has been provided and corrected, where required, exclusively by the nomination party. Any mineral lease selected from this Tract and awarded by the Louisiana State Mineral Board shall be without warranty of any kind, either express, implied, or statutory, including, but not limited to, the implied warranties of merchantability and fitness for a particular purpose. Should the mineral lease awarded by the Louisiana State Mineral Board be subsequently modified, cancelled or abrogated due to the existence of conflicting leases, operating agreements, private claims or other future obligations or conditions which may affect all or any portion of the leased Tract, it shall not relieve the Lessee of the obligation to pay any bonus due thereon to the Louisiana State Mineral Board, nor shall the Louisiana State Mineral Board be obligated to refund any consideration paid by the Lessor prior to such modification, cancellation, or abrogation, including, but not limited to, bonuses, rentals and royalties.

NOTE: Lessors acknowledge that said Township 15 North (North or South), Range 2 East (East or West) is located 50.21% in Ouachita Parish and 49.79% in Caldwell Parish, and Lessee is authorized and directed to pay any and all rentals and royalties which may accrue under the terms of this lease to Lessors separately and respectively in the following proportions: Ouachita Parish School Board School Board - 50.21% and Caldwell Parish School Board - 49.79%, and further, prospective bidders are hereby placed on notice that execution by the State Mineral Board of oil, gas and mineral leases on behalf of the Ouachita Parish School Board, and Caldwell Parish School Board(s) as above set forth on the above described Section 16 shall not be construed as a waiver by the State Mineral Board of any rights that it may have to lease for and on behalf of the State of Louisiana any navigable water bottoms that might be included within said Section 16.

Applicant: Bradley Broussard Land Services, Inc. to Agency and by Resolution from the Ouachita Parish School Board authorizing the Mineral Board to act in its behalf

Bidder	Cash Payment	Price/ Acre	Rental	Oil	Gas	Other



TRACT 37295 - Caldwell and Ouachita Parish School Boards - Caldwell and Ouachita Parishes, Louisiana

The State Mineral Board acting on behalf of the Caldwell and Ouachita Parish School Boards, pursuant to Resolution(s) adopted by that (those) body(ies) and in accordance with Louisiana Revised Statutes 30:121-136 and 151-156, as amended, and Article XIV, Section 16(A)(9) and (B) of the Louisiana Constitution of 1974, as same may be continued and promulgated in proper statutory form and, further, amended from time to time, advertises the lands not under mineral lease on April 13, 2005, excluding the beds and bottoms of all navigable water bodies located within the following: The North Half (N/2); the Southwest Quarter (SW/4) and lots 1, 2 and 3 of Section 16, Township 15 North, Range 3 East, Ouachita Parish, Louisiana, containing approximately **563.44 acres**, all as more particularly outlined on a plat on file in the Office of Mineral Resources, Department of Natural Resources. All bearings, distances and coordinates are based on Louisiana Coordinate System of 1927, (North or South Zone).

NOTE: The above description of the Tract nominated for lease has been provided and corrected, where required, exclusively by the nomination party. Any mineral lease selected from this Tract and awarded by the Louisiana State Mineral Board shall be without warranty of any kind, either express, implied, or statutory, including, but not limited to, the implied warranties of merchantability and fitness for a particular purpose. Should the mineral lease awarded by the Louisiana State Mineral Board be subsequently modified, cancelled or abrogated due to the existence of conflicting leases, operating agreements, private claims or other future obligations or conditions which may affect all or any portion of the leased Tract, it shall not relieve the Lessee of the obligation to pay any bonus due thereon to the Louisiana State Mineral Board, nor shall the Louisiana State Mineral Board be obligated to refund any consideration paid by the Lessor prior to such modification, cancellation, or abrogation, including, but not limited to, bonuses, rentals and royalties.

NOTE: Lessors acknowledge that said Township 15 North (North or South), Range 3 East (East or West) is located 58.53% in Ouachita Parish and 41.47% in Caldwell Parish, and Lessee is authorized and directed to pay any and all rentals and royalties which may accrue under the terms of this lease to Lessors separately and respectively in the following proportions: Caldwell Parish School Board School Board - 41.47% and Ouachita Parish School Board - 58.53%, and further, prospective bidders are hereby placed on notice that execution by the State Mineral Board of oil, gas and mineral leases on behalf of the Caldwell Parish School Board, and Ouachita Parish School Board(s) as above set forth on the above described Section 16 shall not be construed as a waiver by the State Mineral Board of any rights that it may have to lease for and on behalf of the State of Louisiana any navigable water bottoms that might be included within said Section 16.

Applicant: Bradley Broussard Land Services, Inc. to Agency and by Resolution from the Caldwell Parish School Board authorizing the Mineral Board to act in its behalf

Bidder	Cash Payment	Price/ Acre	Rental	Oil	Gas	Other

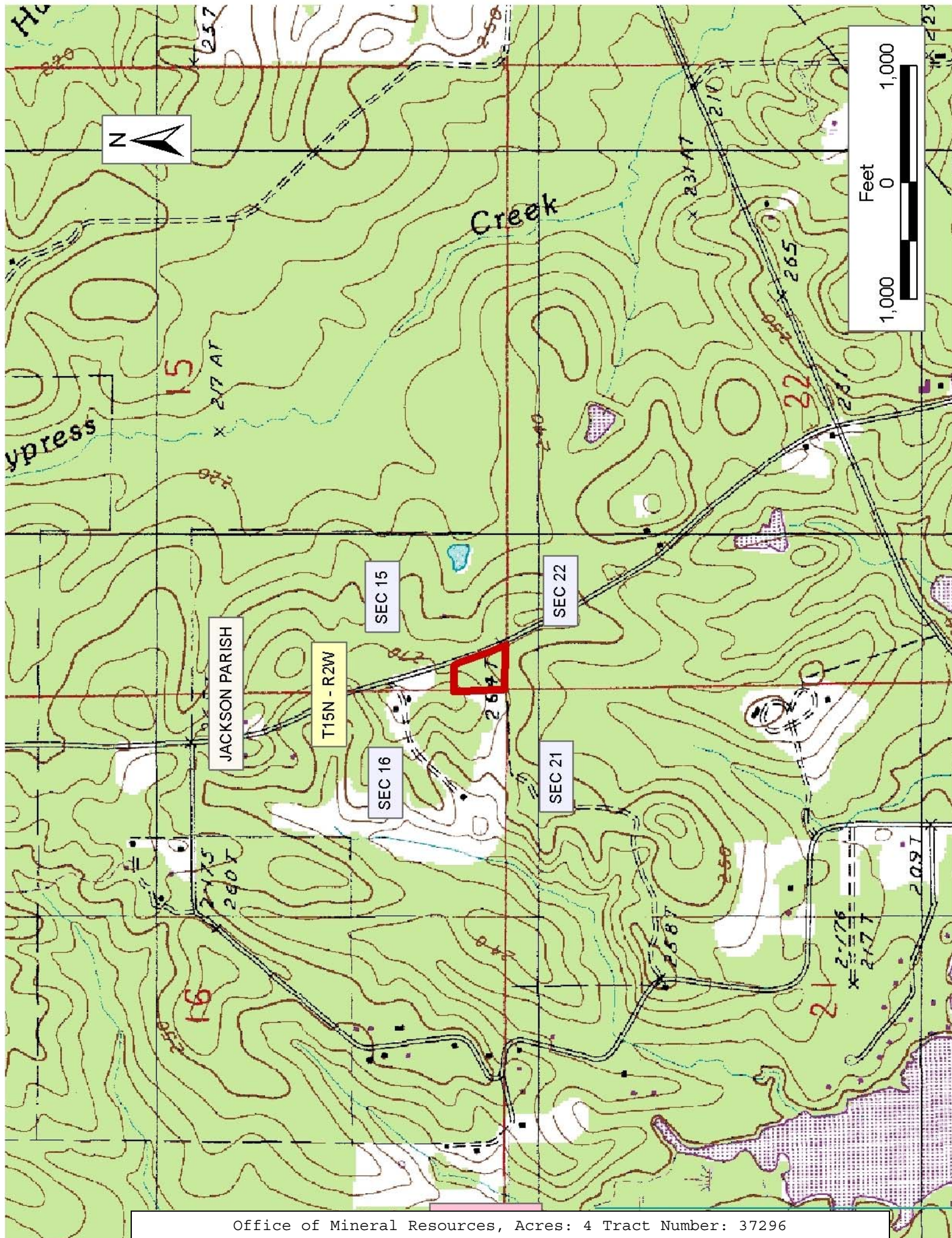
TRACT 37296 - Jackson Parish, Louisiana

A certain Tract of land, excluding the beds and bottoms of all navigable waters, belonging to and not presently under mineral lease from Jackson Parish School Board on April 13, 2005, being more fully described as follows: All that portion of the following lying west of the Vernon-Winnfield Public Road and more particularly the west end of a 15 acre tract located on the southside of the Southwest Quarter of the Southwest Quarter of Section 15, Township 15 North, Range 2 West, containing approximately **4 acres**, all as more particularly outlined on a plat on file in the Office of Mineral Resources, Department of Natural Resources. The description is based on information provided by the State Agency regarding location and ownership of surface and mineral rights. All bearings, distances and coordinates, if applicable, are based on Louisiana Coordinate System of 1927, (North or South Zone).

NOTE: The above description of the Tract nominated for lease has been provided and corrected, where required, exclusively by the nomination party. Any mineral lease selected from this Tract and awarded by the Louisiana State Mineral Board shall be without warranty of any kind, either express, implied, or statutory, including, but not limited to, the implied warranties of merchantability and fitness for a particular purpose. Should the mineral lease awarded by the Louisiana State Mineral Board be subsequently modified, cancelled or abrogated due to the existence of conflicting leases, operating agreements, private claims or other future obligations or conditions which may affect all or any portion of the leased Tract, it shall not relieve the Lessee of the obligation to pay any bonus due thereon to the Louisiana State Mineral Board, nor shall the Louisiana State Mineral Board be obligated to refund any consideration paid by the Lessor prior to such modification, cancellation, or abrogation, including, but not limited to, bonuses, rentals and royalties.

Applicant: George S. Pate to Agency and by Resolution from the Jackson Parish School Board authorizing the Mineral Board to act in its behalf

Bidder	Cash Payment	Price/ Acre	Rental	Oil	Gas	Other



TRACT 37297 - Jackson Parish, Louisiana

A certain Tract of land, excluding the beds and bottoms of all navigable waters, belonging to and not presently under mineral lease from Jackson Parish Police Jury on April 13, 2005, being more fully described as follows: A certain tract of property situated in Jackson Parish, Louisiana containing 24 acres, more or less, described as the North 25 acres of the SW 1/4 of SW 1/4 of Section 15, Township 15 North, Range 2 West, together with all improvements thereon, appurtenances thereunto belonging and component parts **LESS AND EXCEPT** one acre, more or less, lying West of the old Winnfield and Vernon Road conveyed to J. R. Bodie, husband of Vergie Mae Davis Bodie in that certain cash sale deed dated and recorded December 24, 1945 in the conveyance records of Jackson Parish, Louisiana under instrument number 86639 recorded in Conveyance Book 65 at page 94, containing approximately **24 acres**, all as more particularly outlined on a plat on file in the Office of Mineral Resources, Department of Natural Resources. The description is based on information provided by the State Agency regarding location and ownership of surface and mineral rights. All bearings, distances and coordinates, if applicable, are based on Louisiana Coordinate System of 1927, (North or South Zone).

NOTE: The above description of the Tract nominated for lease has been provided and corrected, where required, exclusively by the nomination party. Any mineral lease selected from this Tract and awarded by the Louisiana State Mineral Board shall be without warranty of any kind, either express, implied, or statutory, including, but not limited to, the implied warranties of merchantability and fitness for a particular purpose. Should the mineral lease awarded by the Louisiana State Mineral Board be subsequently modified, cancelled or abrogated due to the existence of conflicting leases, operating agreements, private claims or other future obligations or conditions which may affect all or any portion of the leased Tract, it shall not relieve the Lessee of the obligation to pay any bonus due thereon to the Louisiana State Mineral Board, nor shall the Louisiana State Mineral Board be obligated to refund any consideration paid by the Lessor prior to such modification, cancellation, or abrogation, including, but not limited to, bonuses, rentals and royalties.

Applicant: George S. Pate to Agency and by Resolution from the Jackson

Bidder	Cash Payment	Price/Acre	Rental	Oil	Gas	Other

Parish Police Jury authorizing the Mineral Board to act in its behalf

TRACT 37298 - Iberia Parish, Louisiana

A certain Tract of land, excluding the beds and bottoms of all navigable waters, belonging to and not presently under mineral lease from Louisiana Department Of Transportation And Development on April 13, 2005, being more fully described as follows: Beginning at a point having Coordinates of X = 1,882,871.05 and Y = 475,946.90; thence South 41 degrees 24 minutes 20 seconds West 7,765.77 feet; thence North 51 degrees 48 minutes 08 seconds West 5,518.76 feet; thence North 35 degrees 02 minutes 33 seconds East 7,710.63 feet; thence South 52 degrees 17 minutes 36 seconds East 6,377.95 feet to the point of beginning, containing approximately **10 acres**, all as more particularly outlined on a plat on file in the Office of Mineral Resources, Department of Natural Resources. The description is based on information provided by the State Agency regarding location and ownership of surface and mineral rights. All bearings, distances and coordinates, if applicable, are based on Louisiana Coordinate System of 1927, (North or South Zone).

NOTE: The above description of the Tract nominated for lease has been provided and corrected, where required, exclusively by the nomination party. Any mineral lease selected from this Tract and awarded by the Louisiana State Mineral Board shall be without warranty of any kind, either express, implied, or statutory, including, but not limited to, the implied warranties of merchantability and fitness for a particular purpose. Should the mineral lease awarded by the Louisiana State Mineral Board be subsequently modified, cancelled or abrogated due to the existence of conflicting leases, operating agreements, private claims or other future obligations or conditions which may affect all or any portion of the leased Tract, it shall not relieve the Lessee of the obligation to pay any bonus due thereon to the Louisiana State Mineral Board, nor shall the Louisiana State Mineral Board be obligated to refund any consideration paid by the Lessor prior to such modification, cancellation, or abrogation, including, but not limited to, bonuses, rentals and royalties.

NOTE: The State of Louisiana does hereby reserve, and this lease shall be subject to, the imprescriptible right of surface use in the nature of a servitude in favor of the Department of Natural Resources, including its Offices and Commissions, for the sole purpose of implementing, constructing, servicing and maintaining approved coastal zone management and/or restoration projects. Utilization of any and all rights derived under this lease by the mineral lessee, its agents, successors or assigns, shall not interfere with nor hinder the reasonable surface use by the Department of Natural Resources, its Offices or Commissions, as herein above reserved.

Applicant: Petro-Land Resources, Inc. to Agency and by Resolution from the Louisiana Department Of Transportation And Development authorizing the Mineral Board to act in its behalf

Bidder	Cash Payment	Price/ Acre	Rental	Oil	Gas	Other

