

**TRACT 37293 - St. Mary Parish, Louisiana**

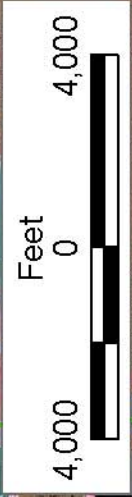
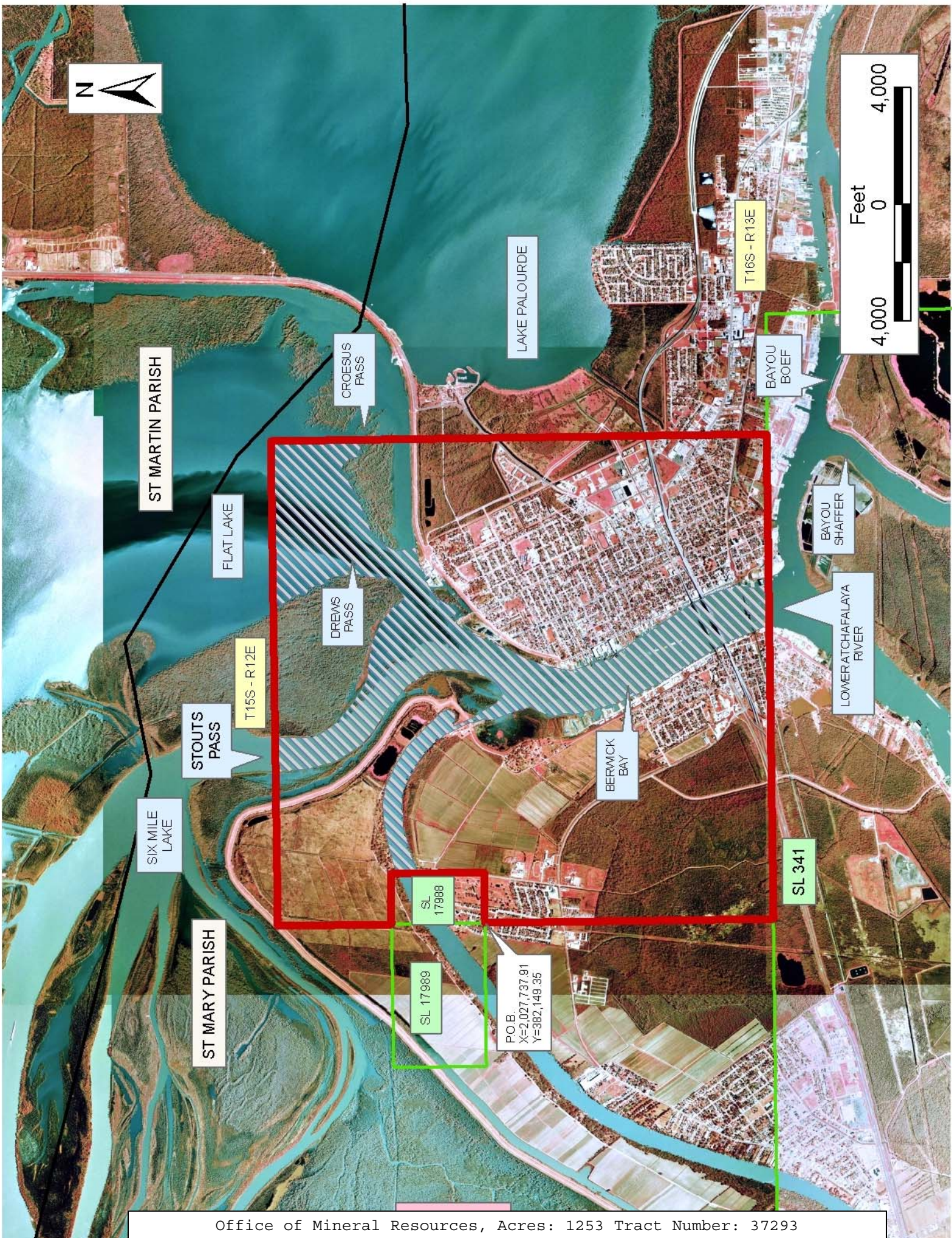
All of the lands now or formerly constituting the beds and bottoms of all water bodies of every nature and description the title of which vests in the State of Louisiana, together with all islands arising therein and other lands formed by accretion or by reliction, where allowed by law, excepting tax adjudicated lands, and not presently under mineral lease on April 13, 2005, situated in St. Mary Parish, Louisiana, and more particularly described as follows: Beginning at a point having Coordinates of X = 2,027,737.91 and Y = 382,149.35 being the Southeast corner of State Lease No. 17989 and the Southwest corner of State Lease No. 17988; Thence East 1,735.96 feet along the South line of said State Lease No. 17988 to its Southeast corner having Coordinates of X = 2,029,473.87 and Y = 382,149.35; Thence North 3,179.20 feet along the East line of said State Lease No. 17988 to its Northeast corner having Coordinates of X = 2,029,473.87 and Y = 385,328.55; Thence West 1,735.96 feet along the North line of said State Lease No. 17988 to its Northwest corner, also being the Northeast corner of State Lease No. 17989, having Coordinates of X = 2,027,737.91 and Y = 385,328.55; Thence North 3,901.28 feet to a point having Coordinates of X = 2,027,737.91 and Y = 389,229.83 feet; Thence East 16,612.95 feet to a point having Coordinates of X = 2,044,350.86 and Y = 389,229.83 feet; Thence South approximately 17,000 feet to a point on the North line of State Lease No. 341, as amended; Thence Westerly approximately 16,613 feet along the North line of said State Lease No. 341 to a point having Coordinates of X = 2,027,737.91; Thence North approximately 9,920 feet to the point of beginning, **LESS AND EXCEPT** that portion, if any, of the above described tract which may lie within State Lease No. 341, containing approximately **1,253 acres**, all as more particularly outlined on a plat on file in the Office of Mineral Resources, Department of Natural Resources. All bearings, distances and coordinates are based on Louisiana Coordinate System of 1927, (North or South Zone), where applicable.

NOTE: The above description of the Tract nominated for lease has been provided and corrected, where required, exclusively by the nomination party. Any mineral lease selected from this Tract and awarded by the Louisiana State Mineral Board shall be without warranty of any kind, either express, implied, or statutory, including, but not limited to, the implied warranties of merchantability and fitness for a particular purpose. Should the mineral lease awarded by the Louisiana State Mineral Board be subsequently modified, cancelled or abrogated due to the existence of conflicting leases, operating agreements, private claims or other future obligations or conditions which may affect all or any portion of the leased Tract, it shall not relieve the Lessee of the obligation to pay any bonus due thereon to the Louisiana State Mineral Board, nor shall the Louisiana State Mineral Board be obligated to refund any consideration paid by the Lessor prior to such modification, cancellation, or abrogation, including, but not limited to, bonuses, rentals and royalties.

NOTE: The State of Louisiana does hereby reserve, and this lease shall be subject to, the imprescriptible right of surface use in the nature of a servitude in favor of the Department of Natural Resources, including its Offices and Commissions, for the sole purpose of implementing, constructing, servicing and maintaining approved coastal zone management and/or restoration projects. Utilization of any and all rights derived under this lease by the mineral lessee, its agents, successors or assigns, shall not interfere with nor hinder the reasonable surface use by the Department of Natural Resources, its Offices or Commissions, as herein above reserved.

Applicant: W. K. Whitewing

Bidder	Cash Payment	Price/Acre	Rental	Oil	Gas	Other



ST MARTIN PARISH

FLAT LAKE

CROESUS PASS

LAKE PALOURDE

T16S - R13E

BAYOU BOEUF

BAYOU SHAFFER

LOWER ATCHAFALAYA RIVER

STOUTS PASS

T15S - R12E

DREWS PASS

BERWICK BAY

SIX MILE LAKE

ST MARY PARISH

SL 17988

SL 341

SL 17989

P.O.B.  
X=2,027,737.91  
Y=382,149.35