

TRACT 37283 - St. Martin Parish, Louisiana

All of the lands now or formerly constituting the beds and bottoms of all water bodies of every nature and description the title of which vests in the State of Louisiana, together with all islands arising therein and other lands formed by accretion or by reliction, where allowed by law, excepting tax adjudicated lands, and not presently under mineral lease on April 13, 2005, situated in St. Martin Parish, Louisiana, and more particularly described as follows: Beginning at a point having Coordinates of X = 2,008,324.70 and Y = 458,364.22; Thence South 5,400.00 feet to a point having Coordinates of X = 2,008,324.70 and Y = 452,964.22; Thence West 10,600.00 feet to a point having Coordinates of X = 1,997,724.70 and Y = 452,964.22; Thence North 5,400.00 feet to a point having Coordinates of X = 1,997,724.70 and Y = 458,364.22; Thence East 10,600.00 feet to the point of beginning, containing approximately **99 acres**, all as more particularly outlined on a plat on file in the Office of Mineral Resources, Department of Natural Resources. All bearings, distances and coordinates are based on Louisiana Coordinate System of 1927, (North or South Zone), where applicable.

NOTE: The above description of the Tract nominated for lease has been provided and corrected, where required, exclusively by the nomination party. Any mineral lease selected from this Tract and awarded by the Louisiana State Mineral Board shall be without warranty of any kind, either express, implied, or statutory, including, but not limited to, the implied warranties of merchantability and fitness for a particular purpose. Should the mineral lease awarded by the Louisiana State Mineral Board be subsequently modified, cancelled or abrogated due to the existence of conflicting leases, operating agreements, private claims or other future obligations or conditions which may affect all or any portion of the leased Tract, it shall not relieve the Lessee of the obligation to pay any bonus due thereon to the Louisiana State Mineral Board, nor shall the Louisiana State Mineral Board be obligated to refund any consideration paid by the Lessor prior to such modification, cancellation, or abrogation, including, but not limited to, bonuses, rentals and royalties.

NOTE: The State of Louisiana does hereby reserve, and this lease shall be subject to, the imprescriptible right of surface use in the nature of a servitude in favor of the Department of Natural Resources, including its Offices and Commissions, for the sole purpose of implementing, constructing, servicing and maintaining approved coastal zone management and/or restoration projects. Utilization of any and all rights derived under this lease by the mineral lessee, its agents, successors or assigns, shall not interfere with nor hinder the reasonable surface use by the Department of Natural Resources, its Offices or Commissions, as herein above reserved.

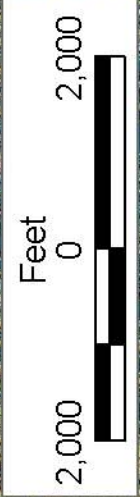
Applicant: Midnite Energy, Inc.

Bidder	Cash Payment	Price/Acre	Rental	Oil	Gas	Other



P.O.B.
X=2,008,324.70
Y=458,364.22

BAYOU LONG



LITTLE BAYOU LONG

MIDDLE FORK

ST MARTIN PARISH

T13S - R11E

WEST FORK



TRACT 37284 - St. Martin Parish, Louisiana

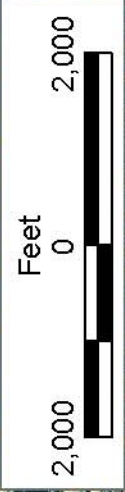
All of the lands now or formerly constituting the beds and bottoms of all water bodies of every nature and description the title of which vests in the State of Louisiana, together with all islands arising therein and other lands formed by accretion or by reliction, where allowed by law, excepting tax adjudicated lands, and not presently under mineral lease on April 13, 2005, situated in St. Martin Parish, Louisiana, and more particularly described as follows: Beginning at a point having Coordinates of X = 2,008,324.70 and Y = 458,364.22; Thence East 5,320.00 feet to a point having Coordinates of X = 2,013,644.70 and Y = 458,364.22; Thence South 5,400.00 feet to a point having Coordinates of X = 2,013,644.70 and Y = 452,964.22; Thence West 5,320.00 feet to a point having Coordinates of X = 2,008,324.70 and Y = 452,964.22; Thence North 5,400.00 feet to the point of beginning, containing approximately **64 acres**, all as more particularly outlined on a plat on file in the Office of Mineral Resources, Department of Natural Resources. All bearings, distances and coordinates are based on Louisiana Coordinate System of 1927, (North or South Zone), where applicable.

NOTE: The above description of the Tract nominated for lease has been provided and corrected, where required, exclusively by the nomination party. Any mineral lease selected from this Tract and awarded by the Louisiana State Mineral Board shall be without warranty of any kind, either express, implied, or statutory, including, but not limited to, the implied warranties of merchantability and fitness for a particular purpose. Should the mineral lease awarded by the Louisiana State Mineral Board be subsequently modified, cancelled or abrogated due to the existence of conflicting leases, operating agreements, private claims or other future obligations or conditions which may affect all or any portion of the leased Tract, it shall not relieve the Lessee of the obligation to pay any bonus due thereon to the Louisiana State Mineral Board, nor shall the Louisiana State Mineral Board be obligated to refund any consideration paid by the Lessor prior to such modification, cancellation, or abrogation, including, but not limited to, bonuses, rentals and royalties.

NOTE: The State of Louisiana does hereby reserve, and this lease shall be subject to, the imprescriptible right of surface use in the nature of a servitude in favor of the Department of Natural Resources, including its Offices and Commissions, for the sole purpose of implementing, constructing, servicing and maintaining approved coastal zone management and/or restoration projects. Utilization of any and all rights derived under this lease by the mineral lessee, its agents, successors or assigns, shall not interfere with nor hinder the reasonable surface use by the Department of Natural Resources, its Offices or Commissions, as herein above reserved.

Applicant: Midnite Energy, Inc.

Bidder	Cash Payment	Price/Acre	Rental	Oil	Gas	Other



ST MARTIN PARISH

T13S - R11E

P.O.B.
X=2,008,324.70
Y=458,364.22

BAYOU
LONG



TRACT 37285 - Cameron Parish, Louisiana

All of the lands now or formerly constituting the beds and bottoms of all water bodies of every nature and description the title of which vests in the State of Louisiana, together with all islands arising therein and other lands formed by accretion or by reliction, where allowed by law, excepting tax adjudicated lands, and not presently under mineral lease on April 13, 2005, situated in Cameron Parish, Louisiana, and more particularly described as follows: Beginning at the Southwest corner of State Lease No. 18037, said point located on the North boundary of State Lease No. 18038 having Coordinates of X = 1,222,704.54 and Y = 462,089.57; thence West 10,335.62 feet to a point on the Texas Louisiana Boundary having Coordinates of X = 1,212,368.92 and Y = 462,089.57; thence on the said Texas Louisiana Boundary the following courses: North 21 degrees 41 minutes 28 seconds East 1,491.01 feet to a point having Coordinates of X = 1,212,920.00 and Y = 463,475.00, and North 14 degrees 23 minutes 58 seconds East 3,530.14 feet to a point having Coordinates of X = 1,213,797.87 and Y = 466,894.24; thence East 8,906.67 feet to a point having Coordinates of X = 1,222,704.54 and Y = 466,894.24; thence South 4,804.67 feet to the point of beginning, containing approximately **1,053.54 acres, LESS AND EXCEPT** that portion thereof, if any, located West of the boundary line between the States of Texas and Louisiana as determined by the report of the Special Master and adjudicated by the Supreme Court of the United States in litigation styled **Texas v. Louisiana, et al No. 36 Original**, or as otherwise approved by said court, all as more particularly outlined on a plat on file in the Office of Mineral Resources, Department of Natural Resources. All bearings, distances and coordinates are based on Louisiana Coordinate System of 1927, (North or South Zone), where applicable.

NOTE: The above description of the Tract nominated for lease has been provided and corrected, where required, exclusively by the nomination party. Any mineral lease selected from this Tract and awarded by the Louisiana State Mineral Board shall be without warranty of any kind, either express, implied, or statutory, including, but not limited to, the implied warranties of merchantability and fitness for a particular purpose. Should the mineral lease awarded by the Louisiana State Mineral Board be subsequently modified, cancelled or abrogated due to the existence of conflicting leases, operating agreements, private claims or other future obligations or conditions which may affect all or any portion of the leased Tract, it shall not relieve the Lessee of the obligation to pay any bonus due thereon to the Louisiana State Mineral Board, nor shall the Louisiana State Mineral Board be obligated to refund any consideration paid by the Lessor prior to such modification, cancellation, or abrogation, including, but not limited to, bonuses, rentals and royalties.

NOTE: The State of Louisiana does hereby reserve, and this lease shall be subject to, the imprescriptible right of surface use in the nature of a servitude in favor of the Department of Natural Resources, including its Offices and Commissions, for the sole purpose of implementing,

constructing, servicing and maintaining approved coastal zone management and/or restoration projects. Utilization of any and all rights derived under this lease by the mineral lessee, its agents, successors or assigns, shall not interfere with nor hinder the reasonable surface use by the Department of Natural Resources, its Offices or Commissions, as herein above reserved.

Applicant: Palmer & Palmer

Bidder	Cash Payment	Price/Acre	Rental	Oil	Gas	Other

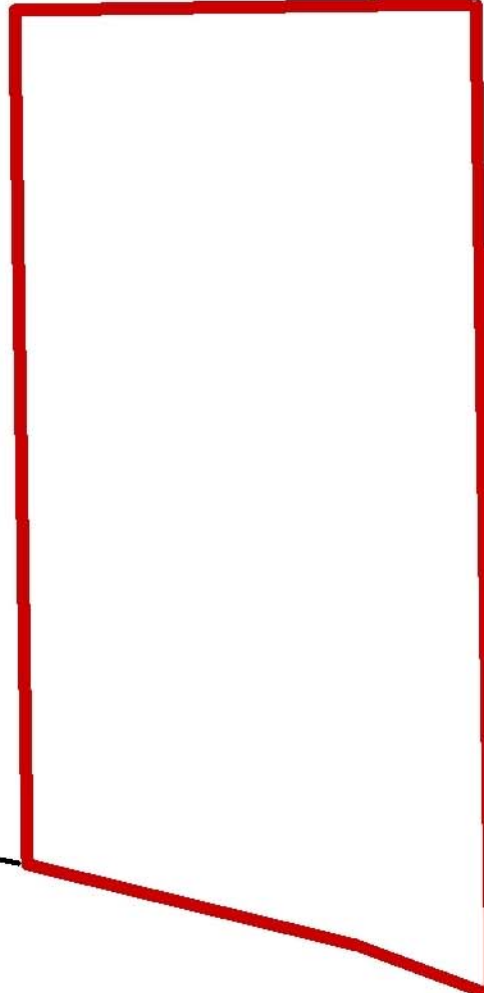


CAMERON PARISH

SABINE LAKE

LA

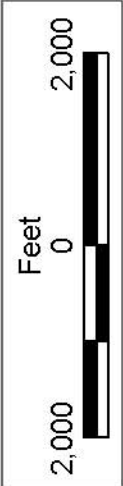
TX



SL 18037

SL 18038

P.O.B.
X=1,222,704.54
Y=462,089.57



TRACT 37286 - Cameron Parish, Louisiana

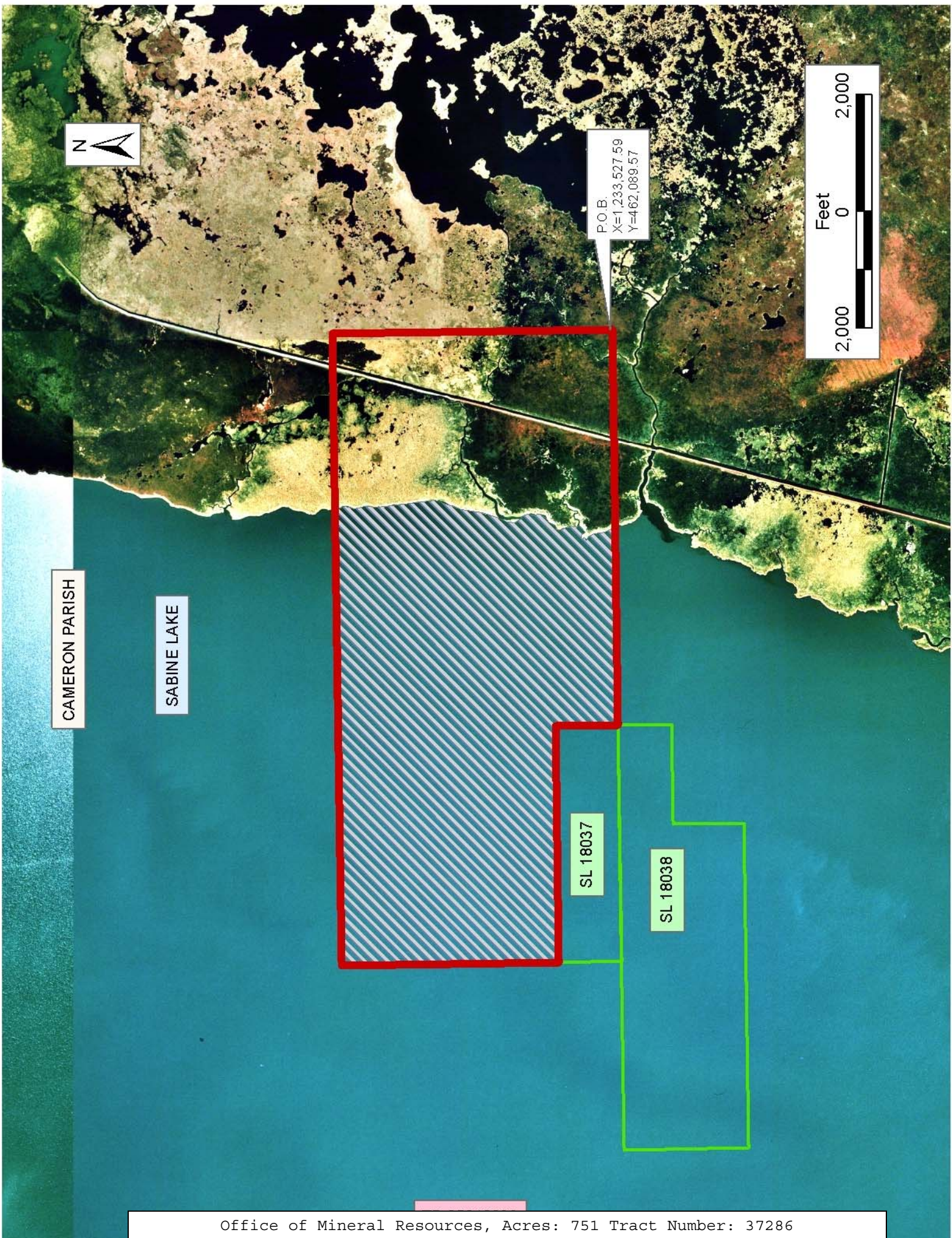
All of the lands now or formerly constituting the beds and bottoms of all water bodies of every nature and description the title of which vests in the State of Louisiana, together with all islands arising therein and other lands formed by accretion or by reliction, where allowed by law, excepting tax adjudicated lands, and not presently under mineral lease on April 13, 2005, situated in Cameron Parish, Louisiana, and more particularly described as follows: Beginning at a point having Coordinates of X = 1,233,527.59 and Y = 462,089.57; thence West 6,770.79 feet to the Southeast corner of State Lease No. 18037 having Coordinates of X = 1,226,756.80 and Y = 462,089.57; thence along the boundary of said State Lease No. 18037 the following: North 1,074.43 feet and West 4,052.26 feet to its Northwest corner having Coordinates of X = 1,222,704.54 and Y = 463,164.00; thence North 3,730.24 feet to a point having Coordinates of X = 1,222,704.54 and Y = 466,894.24; thence East 10,823.04 feet to a point having Coordinates of X = 1,233,527.59 and Y = 466,894.24; thence South 4,804.67 to the point of beginning, containing approximately **751 acres**, all as more particularly outlined on a plat on file in the Office of Mineral Resources, Department of Natural Resources. All bearings, distances and coordinates are based on Louisiana Coordinate System of 1927, (North or South Zone), where applicable.

NOTE: The above description of the Tract nominated for lease has been provided and corrected, where required, exclusively by the nomination party. Any mineral lease selected from this Tract and awarded by the Louisiana State Mineral Board shall be without warranty of any kind, either express, implied, or statutory, including, but not limited to, the implied warranties of merchantability and fitness for a particular purpose. Should the mineral lease awarded by the Louisiana State Mineral Board be subsequently modified, cancelled or abrogated due to the existence of conflicting leases, operating agreements, private claims or other future obligations or conditions which may affect all or any portion of the leased Tract, it shall not relieve the Lessee of the obligation to pay any bonus due thereon to the Louisiana State Mineral Board, nor shall the Louisiana State Mineral Board be obligated to refund any consideration paid by the Lessor prior to such modification, cancellation, or abrogation, including, but not limited to, bonuses, rentals and royalties.

NOTE: The State of Louisiana does hereby reserve, and this lease shall be subject to, the imprescriptible right of surface use in the nature of a servitude in favor of the Department of Natural Resources, including its Offices and Commissions, for the sole purpose of implementing, constructing, servicing and maintaining approved coastal zone management and/or restoration projects. Utilization of any and all rights derived under this lease by the mineral lessee, its agents, successors or assigns, shall not interfere with nor hinder the reasonable surface use by the Department of Natural Resources, its Offices or Commissions, as herein above reserved.

Applicant: Palmer & Palmer

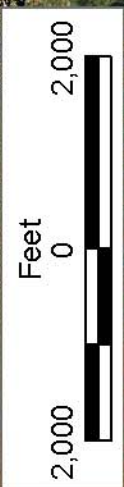
Bidder	Cash Payment	Price/Acre	Rental	Oil	Gas	Other



CAMERON PARISH

SABINE LAKE

P.O.B.
X=1,233,527.59
Y=462,089.57



SL 18037

SL 18038

TRACT 37287 - St. Martin Parish, Louisiana

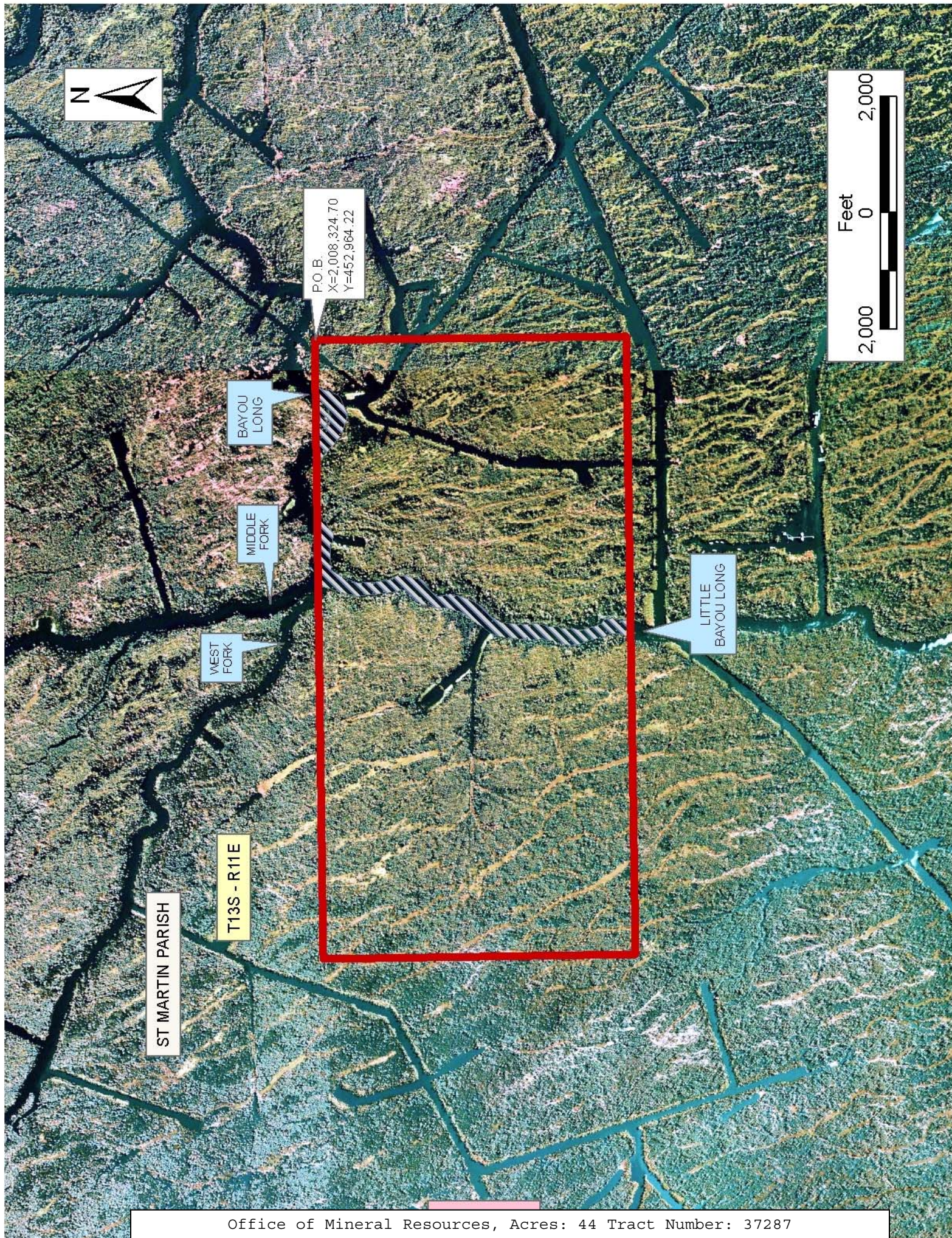
All of the lands now or formerly constituting the beds and bottoms of all water bodies of every nature and description the title of which vests in the State of Louisiana, together with all islands arising therein and other lands formed by accretion or by reliction, where allowed by law, excepting tax adjudicated lands, and not presently under mineral lease on April 13, 2005, situated in St. Martin Parish, Louisiana, and more particularly described as follows: Beginning at a point having Coordinates of X = 2,008,324.70 and Y = 452,964.22; Thence South 5,340.00 feet to a point having Coordinates of X = 2,008,324.70 and Y = 447,624.22; Thence West 10,600.00 feet to a point having Coordinates of X = 1,997,724.70 and Y = 447,624.22; Thence North 5,340.00 feet to a point having Coordinates of X = 1,997,724.70 and Y = 452,964.22; Thence East 10,600.00 feet to the point of beginning, containing approximately **44 acres**, all as more particularly outlined on a plat on file in the Office of Mineral Resources, Department of Natural Resources. All bearings, distances and coordinates are based on Louisiana Coordinate System of 1927, (North or South Zone), where applicable.

NOTE: The above description of the Tract nominated for lease has been provided and corrected, where required, exclusively by the nomination party. Any mineral lease selected from this Tract and awarded by the Louisiana State Mineral Board shall be without warranty of any kind, either express, implied, or statutory, including, but not limited to, the implied warranties of merchantability and fitness for a particular purpose. Should the mineral lease awarded by the Louisiana State Mineral Board be subsequently modified, cancelled or abrogated due to the existence of conflicting leases, operating agreements, private claims or other future obligations or conditions which may affect all or any portion of the leased Tract, it shall not relieve the Lessee of the obligation to pay any bonus due thereon to the Louisiana State Mineral Board, nor shall the Louisiana State Mineral Board be obligated to refund any consideration paid by the Lessor prior to such modification, cancellation, or abrogation, including, but not limited to, bonuses, rentals and royalties.

NOTE: The State of Louisiana does hereby reserve, and this lease shall be subject to, the imprescriptible right of surface use in the nature of a servitude in favor of the Department of Natural Resources, including its Offices and Commissions, for the sole purpose of implementing, constructing, servicing and maintaining approved coastal zone management and/or restoration projects. Utilization of any and all rights derived under this lease by the mineral lessee, its agents, successors or assigns, shall not interfere with nor hinder the reasonable surface use by the Department of Natural Resources, its Offices or Commissions, as herein above reserved.

Applicant: Midnite Energy, Inc.

Bidder	Cash Payment	Price/Acre	Rental	Oil	Gas	Other



ST MARTIN PARISH

T13S - R11E

WEST FORK

MIDDLE FORK

BAYOU LONG

LITTLE BAYOU LONG

P.O.B.
X=2,008,324.70
Y=452,984.22



TRACT 37288 - Iberia Parish, Louisiana

All of the lands now or formerly constituting the beds and bottoms of all water bodies of every nature and description the title of which vests in the State of Louisiana, together with all islands arising therein and other lands formed by accretion or by reliction, where allowed by law, excepting tax adjudicated lands, and not presently under mineral lease on April 13, 2005, situated in Iberia Parish, Louisiana, and more particularly described as follows: Beginning at a point having Coordinates of X = 1,817,000.00 and Y = 413,000.00; thence West 14,340.00 feet to the Southeast corner of State Lease No. 18135 having Coordinates of X = 1,802,660.00 and Y = 413,000.00; thence along the boundaries of said State Lease No. 18135 the following courses: North 660.00 feet, West 660.00 feet and South 660.00 feet to its Southwest corner having Coordinates of X = 1,802,000.00 and Y = 413,000.00; thence West 254.00 feet to a point having Coordinates of X = 1,801,746.00 and Y = 413,000.00; thence North 10,000.00 feet to a point having Coordinates of X = 1,801,746.00 and Y = 423,000.00; thence East 15,254.00 feet to a point having Coordinates of X = 1,817,000.00 and Y = 423,000.00; thence South 10,000.00 feet to the point of beginning, **LESS AND EXCEPT** that portion of State Lease No. 18136 that lies within the above described boundary, further described as follows: Beginning at a point having Coordinates of X = 1,802,000.00 and Y = 420,565.00; thence North 660.00 feet to a point having Coordinates of X = 1,802,000.00 and Y = 421,225.00; thence East 660.00 feet to a point having Coordinates of X = 1,802,660.00 and Y = 421,225.00; thence South 660.00 feet to a point having Coordinates of X = 1,802,660.00 and Y = 420,565.00; thence West 660.00 feet to the point of beginning, containing approximately 10.00 acres; **LESS AND EXCEPT** that portion of State Lease No. 18137 that lies within the above described boundary, further described as follows: Beginning at a point having Coordinates of X = 1,807,816.00 and Y = 417,496.00; thence North 660.00 feet to a point having Coordinates of X = 1,807,816.00 and Y = 418,156.00; thence East 660.00 feet to a point having Coordinates of X = 1,808,476.00 and Y = 418,156.00; thence South 660.00 feet to a point having Coordinates of X = 1,808,476.00 and Y = 417,496.00; thence West 660.00 feet to the point of beginning, containing approximately 10.00 acres, containing approximately **2,500 acres**, all as more particularly outlined on a plat on file in the Office of Mineral Resources, Department of Natural Resources. All bearings, distances and coordinates are based on Louisiana Coordinate System of 1927, (North or South Zone), where applicable.

NOTE: The above description of the Tract nominated for lease has been provided and corrected, where required, exclusively by the nomination party. Any mineral lease selected from this Tract and awarded by the Louisiana State Mineral Board shall be without warranty of any kind, either express, implied, or statutory, including, but not limited to, the implied warranties of merchantability and fitness for a particular purpose. Should the mineral lease awarded by the Louisiana State Mineral Board be subsequently modified, cancelled or abrogated due to the existence of conflicting leases, operating agreements, private claims or

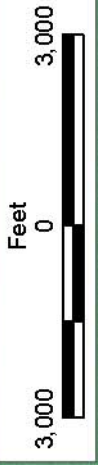
other future obligations or conditions which may affect all or any portion of the leased Tract, it shall not relieve the Lessee of the obligation to pay any bonus due thereon to the Louisiana State Mineral Board, nor shall the Louisiana State Mineral Board be obligated to refund any consideration paid by the Lessor prior to such modification, cancellation, or abrogation, including, but not limited to, bonuses, rentals and royalties.

NOTE: The State of Louisiana does hereby reserve, and this lease shall be subject to, the imprescriptible right of surface use in the nature of a servitude in favor of the Department of Natural Resources, including its Offices and Commissions, for the sole purpose of implementing, constructing, servicing and maintaining approved coastal zone management and/or restoration projects. Utilization of any and all rights derived under this lease by the mineral lessee, its agents, successors or assigns, shall not interfere with nor hinder the reasonable surface use by the Department of Natural Resources, its Offices or Commissions, as herein above reserved.

NOTE: The Department of Wildlife and Fisheries has designated certain areas in the coastal waters of the State of Louisiana as Oyster Seed Bed Areas. The exact location of those Seed Bed Areas must be obtained from the Department of Wildlife and Fisheries and any work done under a mineral lease from the State of Louisiana may necessarily be conducted in conformity with the rules and regulations promulgated by the said Department of Wildlife and Fisheries for Oyster Seed Bed Areas.

Applicant: Kentex Energy L.L.C.

Bidder	Cash Payment	Price/Acre	Rental	Oil	Gas	Other



IBERIA PARISH

T14S-R5E

VERMILION PARISH

SL 18160

SL 18136

SL 18137

SL 18135

SL 15507

P.O. B.
X=1,817,000.00
Y=413,000.00

TRACT 37289 - Plaquemines Parish, Louisiana

All of the lands now or formerly constituting the beds and bottoms of all water bodies of every nature and description the title of which vests in the State of Louisiana, together with all islands arising therein and other lands formed by accretion or by reliction, where allowed by law, excepting tax adjudicated lands, and not presently under mineral lease on April 13, 2005, situated in Plaquemines Parish, Louisiana, and more particularly described as follows: Beginning at a point having Coordinates of X = 2,470,460.00 and Y = 393,390.00; thence East 18,067.50 feet to a point having Coordinates of X = 2,488,527.50 and Y = 393,390.00; thence South 13,150.00 feet to a point having Coordinates of X = 2,488,527.50 and Y = 380,240.00; thence West 18,067.50 feet to a point having Coordinates of X = 2,470,460.00 and Y = 380,240.00; thence North 13,150.00 feet to the point of beginning, **LESS AND EXCEPT** any interest attributable to State Lease No. 335, as amended, containing approximately **2,100 acres**, all as more particularly outlined on a plat on file in the Office of Mineral Resources, Department of Natural Resources. All bearings, distances and coordinates are based on Louisiana Coordinate System of 1927, (North or South Zone), where applicable.

NOTE: The above description of the Tract nominated for lease has been provided and corrected, where required, exclusively by the nomination party. Any mineral lease selected from this Tract and awarded by the Louisiana State Mineral Board shall be without warranty of any kind, either express, implied, or statutory, including, but not limited to, the implied warranties of merchantability and fitness for a particular purpose. Should the mineral lease awarded by the Louisiana State Mineral Board be subsequently modified, cancelled or abrogated due to the existence of conflicting leases, operating agreements, private claims or other future obligations or conditions which may affect all or any portion of the leased Tract, it shall not relieve the Lessee of the obligation to pay any bonus due thereon to the Louisiana State Mineral Board, nor shall the Louisiana State Mineral Board be obligated to refund any consideration paid by the Lessor prior to such modification, cancellation, or abrogation, including, but not limited to, bonuses, rentals and royalties.

NOTE: Acreage for the above described tract includes water bottoms within the boundaries of State Lease No. 335, as amended, which were previously leased under State Lease No. 195, as amended, but were later released from said State Lease No. 195 on July 10, 1947 (Instrument "M").

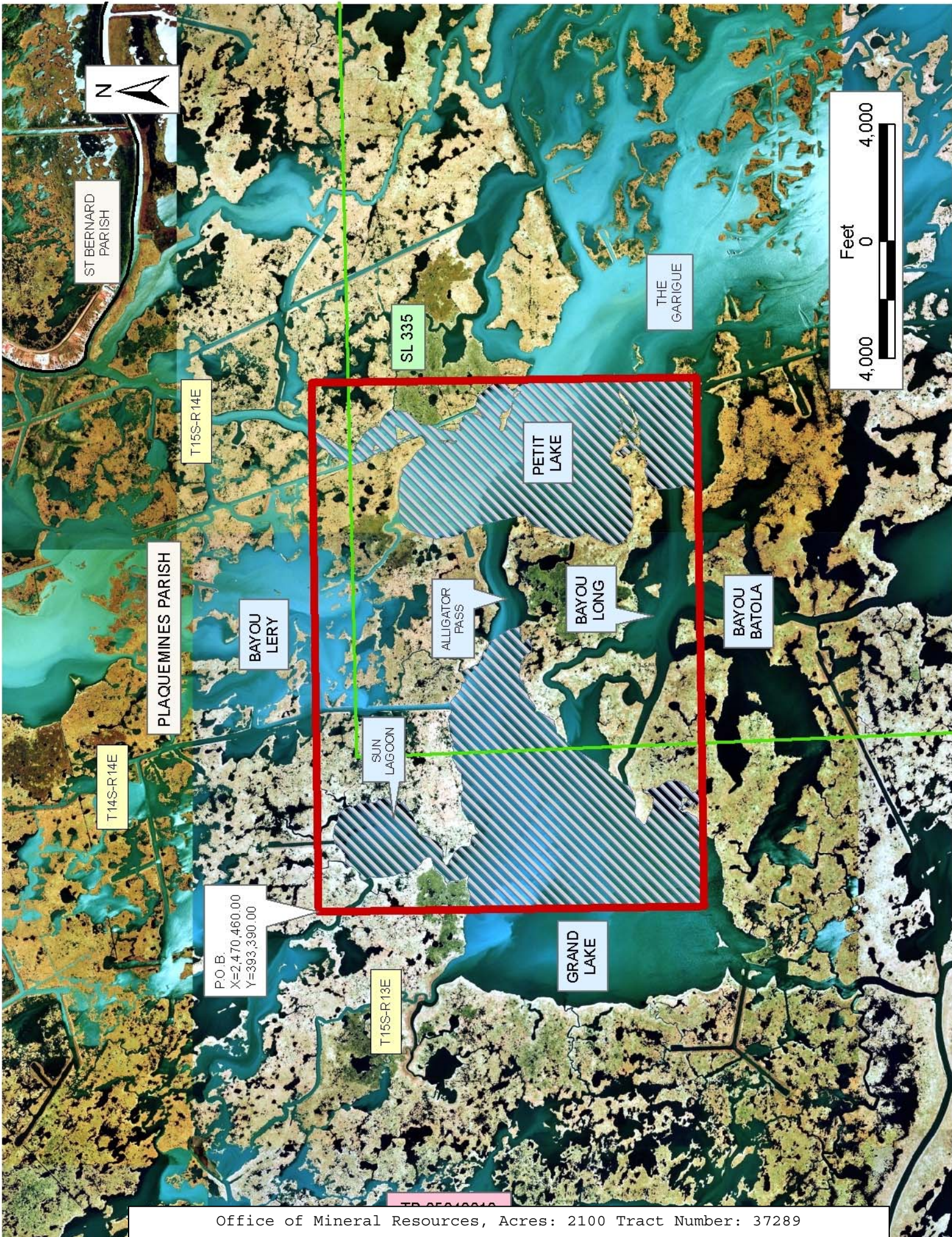
NOTE: The State of Louisiana does hereby reserve, and this lease shall be subject to, the imprescriptible right of surface use in the nature of a servitude in favor of the Department of Natural Resources, including its Offices and Commissions, for the sole purpose of implementing, constructing, servicing and maintaining approved coastal zone management and/or restoration projects. Utilization of any and all rights derived under this lease by the mineral lessee, its agents, successors or assigns, shall not interfere with nor hinder the reasonable surface use by the

Department of Natural Resources, its Offices or Commissions, as herein above reserved.

NOTE: The Department of Wildlife and Fisheries has designated certain areas in the coastal waters of the State of Louisiana as Oyster Seed Bed Areas. The exact location of those Seed Bed Areas must be obtained from the Department of Wildlife and Fisheries and any work done under a mineral lease from the State of Louisiana may necessarily be conducted in conformity with the rules and regulations promulgated by the said Department of Wildlife and Fisheries for Oyster Seed Bed Areas.

Applicant: Elizabeth Baudin

Bidder	Cash Payment	Price/Acre	Rental	Oil	Gas	Other



TRACT 37290 - Plaquemines Parish, Louisiana

All of the lands now or formerly constituting the beds and bottoms of all water bodies of every nature and description the title of which vests in the State of Louisiana, together with all islands arising therein and other lands formed by accretion or by reliction, where allowed by law, excepting tax adjudicated lands, and not presently under mineral lease on April 13, 2005, situated in Plaquemines Parish, Louisiana, and more particularly described as follows: Beginning at a point having Coordinates of X = 2,488,527.50 and Y = 393,390.00; thence East 18,067.50 feet to a point having Coordinates of X = 2,506,595.00 and Y = 393,390.00; thence South 13,150.00 feet to a point having Coordinates of X = 2,506,595.00 and Y = 380,240.00; thence West 18,067.50 feet to a point having Coordinates of X = 2,488,527.50 and Y = 380,240.00; thence North 13,150.00 feet to the point of beginning, **LESS AND EXCEPT** any interest attributable to State Lease No. 335, as amended, containing approximately **700 acres**, all as more particularly outlined on a plat on file in the Office of Mineral Resources, Department of Natural Resources. All bearings, distances and coordinates are based on Louisiana Coordinate System of 1927, (North or South Zone), where applicable.

NOTE: The above description of the Tract nominated for lease has been provided and corrected, where required, exclusively by the nomination party. Any mineral lease selected from this Tract and awarded by the Louisiana State Mineral Board shall be without warranty of any kind, either express, implied, or statutory, including, but not limited to, the implied warranties of merchantability and fitness for a particular purpose. Should the mineral lease awarded by the Louisiana State Mineral Board be subsequently modified, cancelled or abrogated due to the existence of conflicting leases, operating agreements, private claims or other future obligations or conditions which may affect all or any portion of the leased Tract, it shall not relieve the Lessee of the obligation to pay any bonus due thereon to the Louisiana State Mineral Board, nor shall the Louisiana State Mineral Board be obligated to refund any consideration paid by the Lessor prior to such modification, cancellation, or abrogation, including, but not limited to, bonuses, rentals and royalties.

NOTE: Acreage for the above described tract includes water bottoms within the boundaries of State Lease No. 335, as amended, which were previously leased under State Lease No. 195, as amended, but were later released from said State Lease No. 195 on July 10, 1947 (Instrument "M").

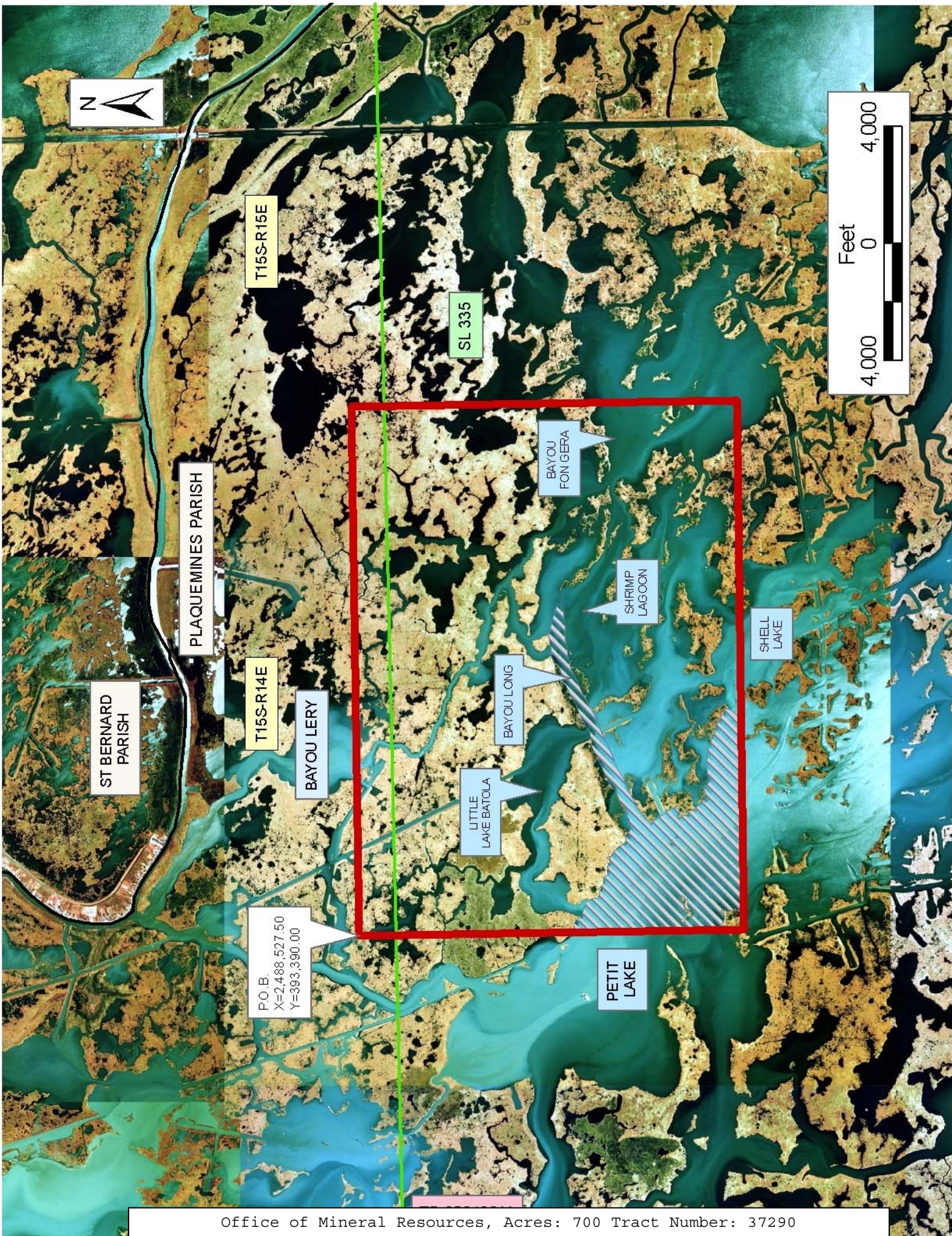
NOTE: The State of Louisiana does hereby reserve, and this lease shall be subject to, the imprescriptible right of surface use in the nature of a servitude in favor of the Department of Natural Resources, including its Offices and Commissions, for the sole purpose of implementing, constructing, servicing and maintaining approved coastal zone management and/or restoration projects. Utilization of any and all rights derived under this lease by the mineral lessee, its agents, successors or assigns, shall not interfere with nor hinder the reasonable surface use by the

Department of Natural Resources, its Offices or Commissions, as herein above reserved.

NOTE: The Department of Wildlife and Fisheries has designated certain areas in the coastal waters of the State of Louisiana as Oyster Seed Bed Areas. The exact location of those Seed Bed Areas must be obtained from the Department of Wildlife and Fisheries and any work done under a mineral lease from the State of Louisiana may necessarily be conducted in conformity with the rules and regulations promulgated by the said Department of Wildlife and Fisheries for Oyster Seed Bed Areas.

Applicant: Elizabeth Baudin

Bidder	Cash Payment	Price/Acre	Rental	Oil	Gas	Other



ST BERNARD
PARISH

PLAQUEMINES PARISH

T15S-R15E

SL 335

T15S-R14E

BAYOU LERY

BAYOU
FON GERA

SHRIMP
LAGOON

SHELL
LAKE

P.O.B.
X=2,488,527.50
Y=393,390.00

LITTLE
LAKE
BATOLA

BAYOU
LONG

PETIT
LAKE

TRACT 37291 - Cameron Parish, Louisiana

All of the lands now or formerly constituting the beds and bottoms of all water bodies of every nature and description the title of which vests in the State of Louisiana, together with all islands arising therein and other lands formed by accretion or by reliction, where allowed by law, excepting tax adjudicated lands, and not presently under mineral lease on April 13, 2005, situated in Cameron Parish, Louisiana, and more particularly described as follows: Beginning at a point located on a projection of the West line of Block 6, West Cameron Area, Revised, having Coordinates of X = 1,347,177.57 and Y = 408,500.00; thence East 14,122.43 feet to a point having Coordinates of X = 1,361,300.00 and Y = 408,500.00; thence South 144.00 feet to a point having Coordinates of X = 1,361,300.00 and Y = 408,356.00; thence East 1,500.00 feet to a point having Coordinates of X = 1,362,800.00 and Y = 408,356.00; thence South 4,318.43 feet to a point on the coastline having Coordinates of X = 1,362,800.00 and Y = 404,037.57; thence along said coastline the following courses: Southwesterly on a straight line to a point having Coordinates of X = 1,362,688 and Y = 403,999, Southwesterly on a straight line to a point having Coordinates of X = 1,361,811 and Y = 402,655, Southwesterly on a straight line to a point having Coordinates of X = 1,360,638 and Y = 402,221, Northwesterly on a straight line to a point having Coordinates of X = 1,357,913 and Y = 403,182, Northwesterly on a straight line to a point having Coordinates of X = 1,354,310 and Y = 403,875; Northwesterly on a straight line to a point having Coordinates of X = 1,351,162 and Y = 404,620, and Northwesterly on a straight line to the Northwest corner of said Block 6 having Coordinates of X = 1,347,177.57 and Y = 405,200.53; thence North 3,299.47 along the projection of the West line of said Block 6 to the point of beginning, **LESS AND EXCEPT** that portion if any of State Lease No. 17526, as amended, that may fall within the above described tract, containing approximately **400 acres**, all as more particularly outlined on a plat on file in the Office of Mineral Resources, Department of Natural Resources. All bearings, distances and coordinates are based on Louisiana Coordinate System of 1927, (North or South Zone), where applicable.

NOTE: The above description of the Tract nominated for lease has been provided and corrected, where required, exclusively by the nomination party. Any mineral lease selected from this Tract and awarded by the Louisiana State Mineral Board shall be without warranty of any kind, either express, implied, or statutory, including, but not limited to, the implied warranties of merchantability and fitness for a particular purpose. Should the mineral lease awarded by the Louisiana State Mineral Board be subsequently modified, cancelled or abrogated due to the existence of conflicting leases, operating agreements, private claims or other future obligations or conditions which may affect all or any portion of the leased Tract, it shall not relieve the Lessee of the obligation to pay any bonus due thereon to the Louisiana State Mineral Board, nor shall the Louisiana State Mineral Board be obligated to refund any consideration

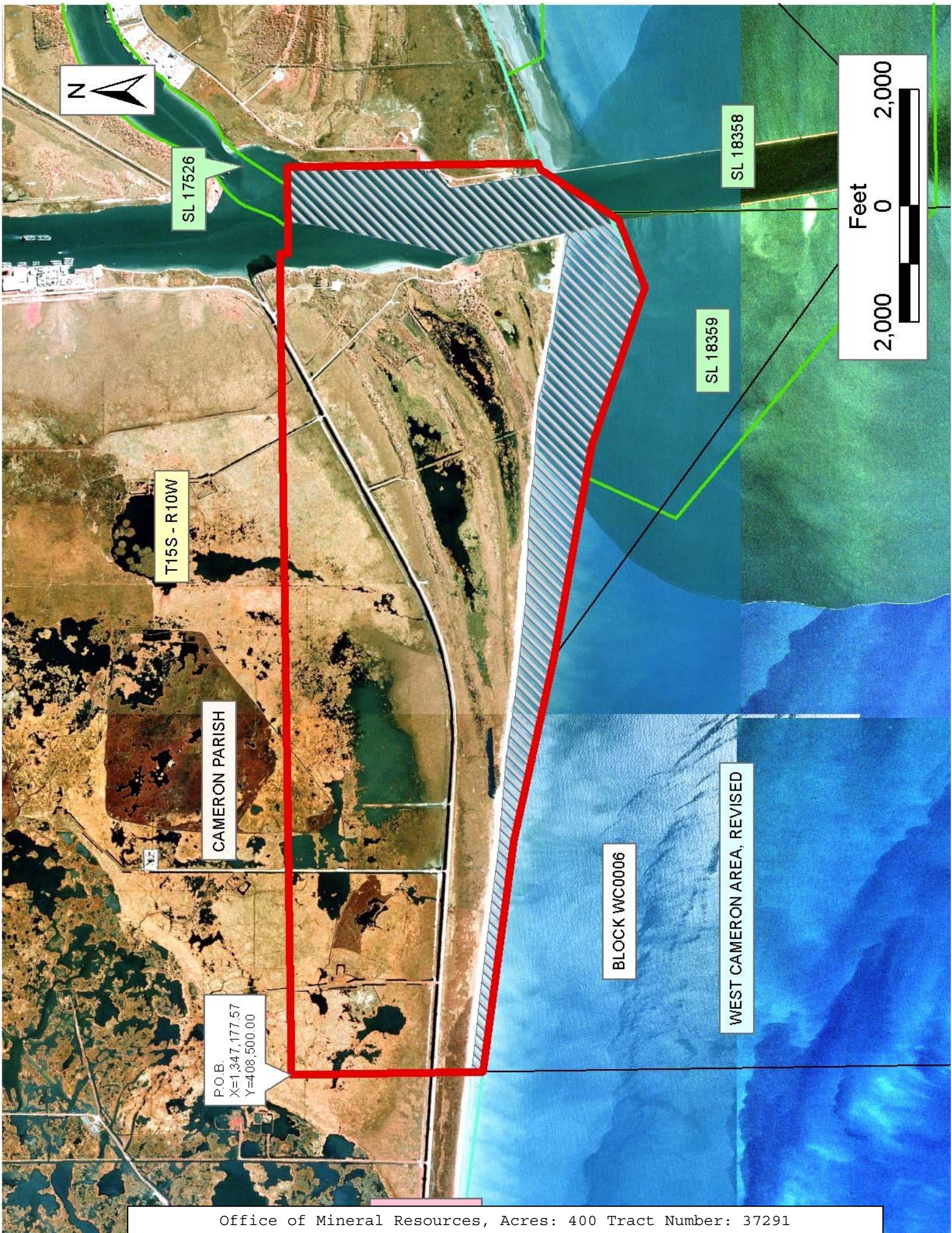
paid by the Lessor prior to such modification, cancellation, or abrogation, including, but not limited to, bonuses, rentals and royalties.

NOTE: The State of Louisiana does hereby reserve, and this lease shall be subject to, the imprescriptible right of surface use in the nature of a servitude in favor of the Department of Natural Resources, including its Offices and Commissions, for the sole purpose of implementing, constructing, servicing and maintaining approved coastal zone management and/or restoration projects. Utilization of any and all rights derived under this lease by the mineral lessee, its agents, successors or assigns, shall not interfere with nor hinder the reasonable surface use by the Department of Natural Resources, its Offices or Commissions, as herein above reserved.

NOTE: It appears, according to our records, that a portion of this Tract is located within the restrictive safety fairway area as set out by the Corps of Engineers, U.S. Army and/or the restrictive anchorage area as set out by the U.S. Coast Guard.

Applicant: Merlin Exploration, Inc.

Bidder	Cash Payment	Price/Acre	Rental	Oil	Gas	Other



TRACT 37292 - St. Mary Parish, Louisiana

All of the lands now or formerly constituting the beds and bottoms of all water bodies of every nature and description the title of which vests in the State of Louisiana, together with all islands arising therein and other lands formed by accretion or by reliction, where allowed by law, excepting tax adjudicated lands, and not presently under mineral lease on April 13, 2005, situated in St. Mary Parish, Louisiana, and more particularly described as follows: Beginning at a point having Coordinates of X = 1,990,464.00 and Y = 397,960.00; thence East 14,080.00 feet to a point having Coordinates of X = 2,004,544.00 and Y = 397,960.00; thence South approximately 3,200 feet to a point on the Northern boundary of State Lease No. 17291 having a Coordinate of X = 2,004,544.00; thence along the boundary of said State Lease No. 17291 the following courses: Westerly and Southerly to a point having Coordinates of X = 2,004,315.00 and Y = 393,500.00; thence continuing along the boundary of said State Lease No. 17291 the following courses: West 2,297.40 feet, South 484.79 feet, South 10 degrees 30 minutes 00 seconds East 500.00 feet, and South 52 degrees 19 minutes 30 seconds West 133.63 feet to the Northeast corner of State Lease No. 17423, as amended having Coordinates of X = 2,002,002.95 and Y = 392,441.91; thence along the boundary of said State Lease No. 17423 the following courses: North 79 degrees 37 minutes 35 seconds West 2,255.92 feet, South 10 degrees 38 minutes 40 seconds West 30.55 feet, North 79 degrees 39 minutes 40 seconds West 688.04 feet, Southeasterly on an arc to the left having a radius of 1,770.00 feet and a chord bearing of South 07 degrees 30 minutes 28 seconds East 1,067.61 feet, Southeasterly on an arc to the left having a radius of 1,040.00 feet and a chord bearing of South 51 degrees 26 minutes 17 seconds East 970.15 feet, Southeasterly on an arc to the left having a radius of 3,060.00 feet and a chord bearing of South 77 degrees 06 minutes 09 seconds East 393.00 feet to its Southwest corner, also being a point on the boundary of said State Lease No. 17291 having Coordinates of X = 2,000,382.56 and Y = 391,190.65; thence South 52 degrees 19 minutes 30 seconds West approximately 442 feet to a corner of State Lease No. 17291; thence Southerly approximately 5,250 feet on the West line of said State Lease No. 17291 and State Lease No. 1685, as amended, to a point having a Coordinate of Y = 385,670.00; thence West approximately 9,562 feet to a point having Coordinates of X = 1,990,464.00 and Y = 385,670.00; thence North 12,290.00 feet to the point of beginning, **LESS AND EXCEPT** those portions of State Lease No. 1685, as amended, State Lease No. 17291 and State Lease No. 17423, as amended, that may lie within the above described tract, containing approximately **2,324 acres**, all as more particularly outlined on a plat on file in the Office of Mineral Resources, Department of Natural Resources. All bearings, distances and coordinates are based on Louisiana Coordinate System of 1927, (North or South Zone), where applicable.

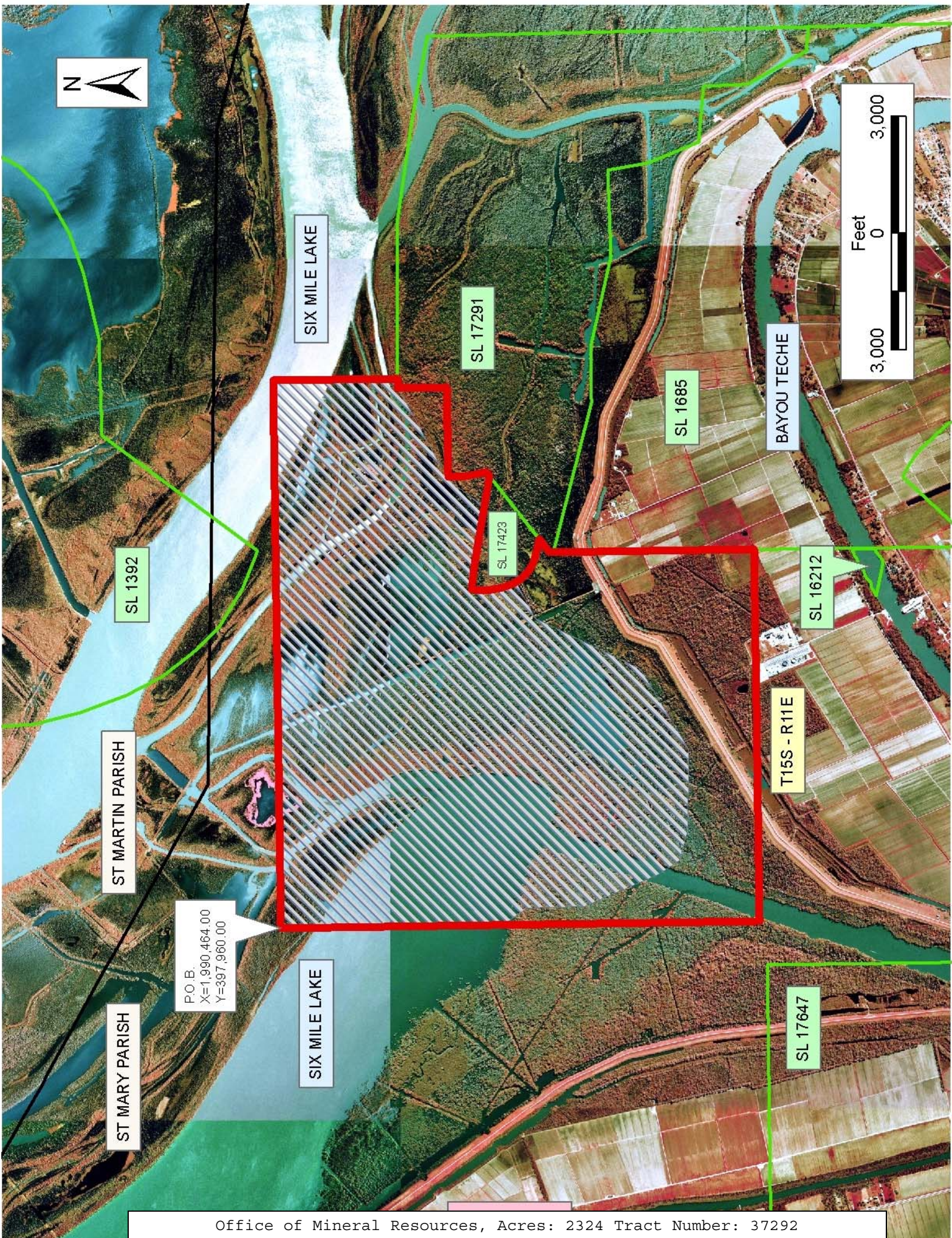
NOTE: The above description of the Tract nominated for lease has been provided and corrected, where required, exclusively by the nomination party. Any mineral lease selected from this Tract and awarded by the

Louisiana State Mineral Board shall be without warranty of any kind, either express, implied, or statutory, including, but not limited to, the implied warranties of merchantability and fitness for a particular purpose. Should the mineral lease awarded by the Louisiana State Mineral Board be subsequently modified, cancelled or abrogated due to the existence of conflicting leases, operating agreements, private claims or other future obligations or conditions which may affect all or any portion of the leased Tract, it shall not relieve the Lessee of the obligation to pay any bonus due thereon to the Louisiana State Mineral Board, nor shall the Louisiana State Mineral Board be obligated to refund any consideration paid by the Lessor prior to such modification, cancellation, or abrogation, including, but not limited to, bonuses, rentals and royalties.

NOTE: The State of Louisiana does hereby reserve, and this lease shall be subject to, the imprescriptible right of surface use in the nature of a servitude in favor of the Department of Natural Resources, including its Offices and Commissions, for the sole purpose of implementing, constructing, servicing and maintaining approved coastal zone management and/or restoration projects. Utilization of any and all rights derived under this lease by the mineral lessee, its agents, successors or assigns, shall not interfere with nor hinder the reasonable surface use by the Department of Natural Resources, its Offices or Commissions, as herein above reserved.

Applicant: Harold J. Anderson, Inc.

Bidder	Cash Payment	Price/Acre	Rental	Oil	Gas	Other



P.O.B.
X=1,990,464.00
Y=397,960.00