

TRACT 37273 - Red River Parish, Louisiana

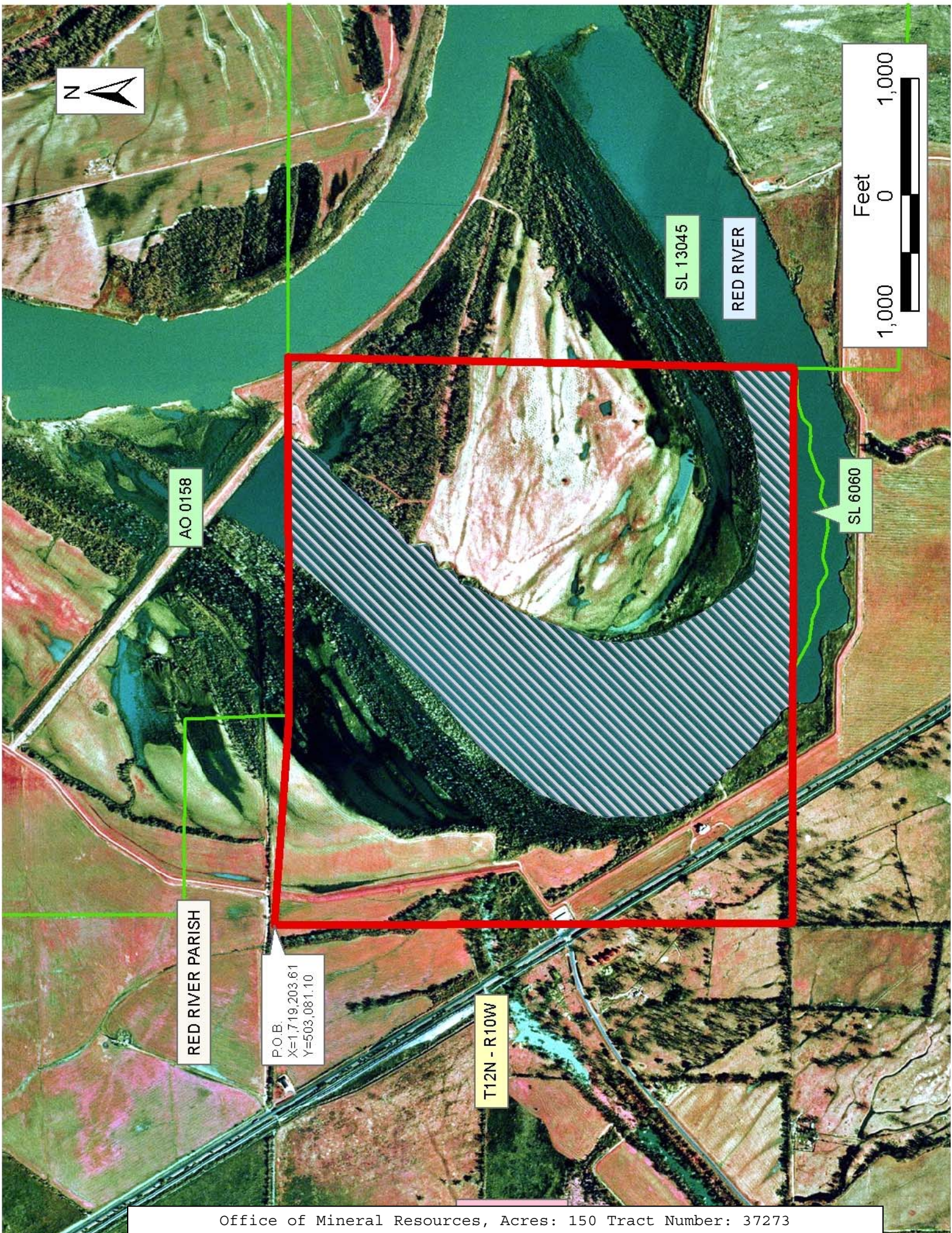
All of the lands now or formerly constituting the beds and bottoms of all water bodies of every nature and description the title of which vests in the State of Louisiana, together with all islands arising therein and other lands formed by accretion or by reliction, where allowed by law, excepting tax adjudicated lands, and not presently under mineral lease on April 13, 2005, situated in Red River Parish, Louisiana, and more particularly described as follows: Beginning at a point having Coordinates of X = 1,719,203.61 and Y = 503,081.10; thence Easterly on a straight line to the most Southern Southwest corner of Operating Agreement No. 0158; thence Easterly along the South boundary of said Operating Agreement to the Northwest corner of State Lease No. 13045; thence Southerly approximately 4,358 feet along the West boundary of said State Lease No. 13045 to a point of intersection with a line bearing South 89 degrees 32 minutes 36 seconds East extended from a point having Coordinates of X = 1,719,203.61 and Y = 498,623.71; thence North 89 degrees 32 minutes 36 seconds West approximately 4,772 feet along said line to said point having Coordinates of X = 1,719,203.61 and Y = 498,623.71; thence North 4,457.39 feet to the point of beginning, **LESS AND EXCEPT** all those portions of Operating Agreement No. 0158, State Lease No. 13045 and State Lease No. 6060, as amended, that may lie within the above described tract, containing approximately **150 acres**, all as more particularly outlined on a plat on file in the Office of Mineral Resources, Department of Natural Resources. All bearings, distances and coordinates are based on Louisiana Coordinate System of 1927, (North or South Zone), where applicable.

NOTE: The above description of the Tract nominated for lease has been provided and corrected, where required, exclusively by the nomination party. Any mineral lease selected from this Tract and awarded by the Louisiana State Mineral Board shall be without warranty of any kind, either express, implied, or statutory, including, but not limited to, the implied warranties of merchantability and fitness for a particular purpose. Should the mineral lease awarded by the Louisiana State Mineral Board be subsequently modified, cancelled or abrogated due to the existence of conflicting leases, operating agreements, private claims or other future obligations or conditions which may affect all or any portion of the leased Tract, it shall not relieve the Lessee of the obligation to pay any bonus due thereon to the Louisiana State Mineral Board, nor shall the Louisiana State Mineral Board be obligated to refund any consideration paid by the Lessor prior to such modification, cancellation, or abrogation, including, but not limited to, bonuses, rentals and royalties.

| Bidder | Cash Payment | Price/Acre | Rental | Oil | Gas | Other |
|--------|--------------|------------|--------|-----|-----|-------|
| | | | | | | |
| | | | | | | |

| | | | | | | |
|--|--|--|--|--|--|--|
| | | | | | | |
| | | | | | | |

Applicant: Theophilus Oil, Gas & Land Services, LLC



AO 0158

SL 13045

RED RIVER

SL 6060

RED RIVER PARISH

P.O.B.
X=1,719,203.61
Y=503,081.10

T12N - R10W

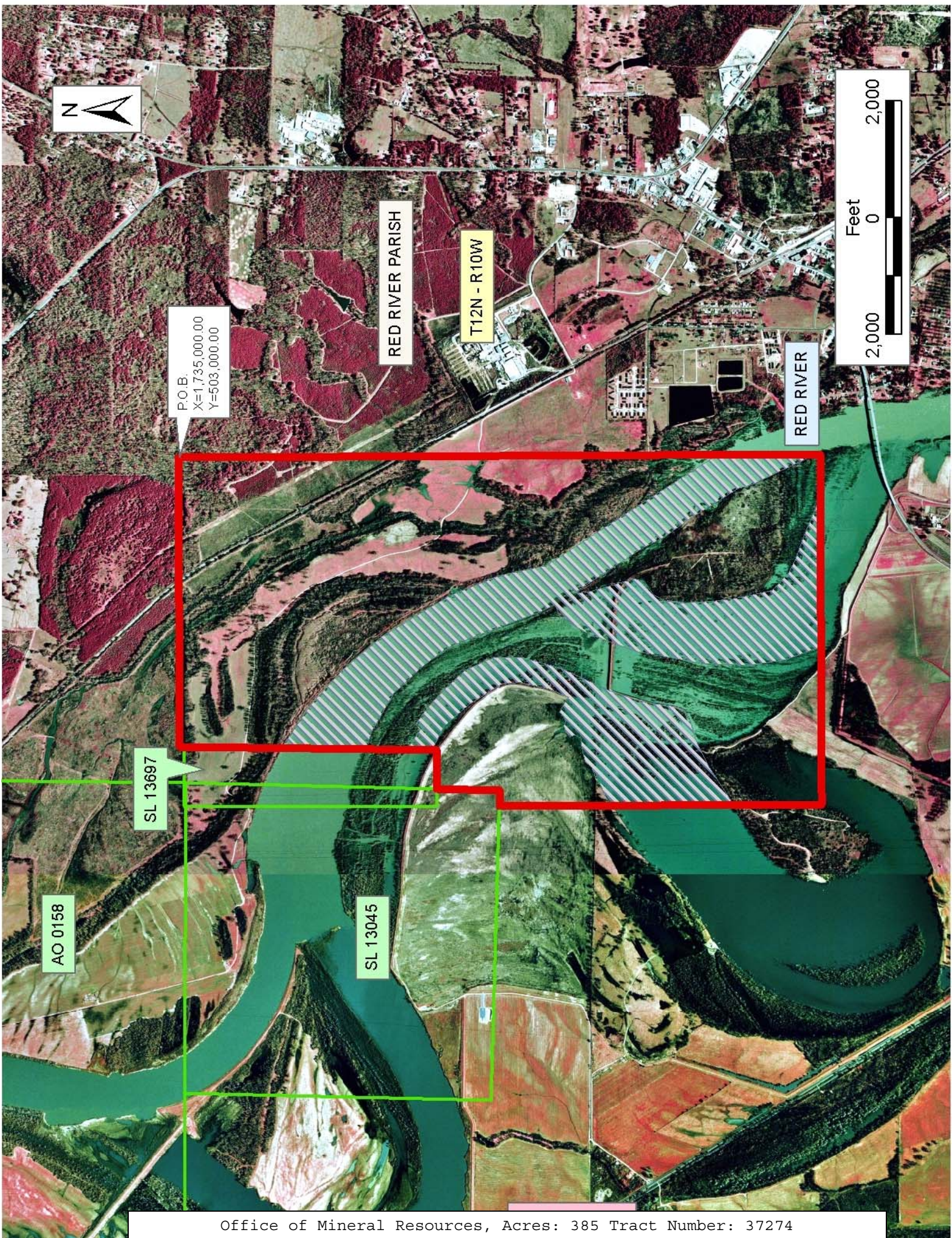
TRACT 37274 - Red River Parish, Louisiana

All of the lands now or formerly constituting the beds and bottoms of all water bodies of every nature and description the title of which vests in the State of Louisiana, together with all islands arising therein and other lands formed by accretion or by reliction, where allowed by law, excepting tax adjudicated lands, and not presently under mineral lease on April 13, 2005, situated in Red River Parish, Louisiana, and more particularly described as follows: Beginning at a point having Coordinates of X = 1,735,000.00 and Y = 503,000.00; thence South 11,000.00 feet to a point having Coordinates of X = 1,735,000.00 and Y = 492,000.00; thence West 6,000.00 feet to a point having Coordinates of X = 1,729,000.00 and Y = 492,000.00; thence North approximately 5,524 feet to a point on the South boundary of State Lease No. 13045 having a Coordinate of X = 1,729,000.00; thence Easterly approximately 267 feet along the South boundary of said State Lease No. 13045 to its Southeast corner; thence Northerly approximately 1,080 feet along the East boundary of said State Lease No. 13045 to a point on the South boundary of State Lease No. 13697, as amended; thence Easterly approximately 661 feet along the South boundary of said State Lease No. 13697 to its Southeast corner; thence Northerly approximately 4,323 feet along the East boundary of said State Lease No. 13697 to its Northeast corner; thence Northerly approximately 83 feet to a point having Coordinates of X = 1,730,037.70 and Y = 503,000.00; thence East 4,962.30 feet to the point of beginning, **LESS AND EXCEPT** those portions of Operating Agreement No. 0158, State Lease No. 13045 and State Lease No. 13697, as amended, that may lie within the above described tract, containing approximately **385 acres**, all as more particularly outlined on a plat on file in the Office of Mineral Resources, Department of Natural Resources. All bearings, distances and coordinates are based on Louisiana Coordinate System of 1927, (North or South Zone), where applicable.

NOTE: The above description of the Tract nominated for lease has been provided and corrected, where required, exclusively by the nomination party. Any mineral lease selected from this Tract and awarded by the Louisiana State Mineral Board shall be without warranty of any kind, either express, implied, or statutory, including, but not limited to, the implied warranties of merchantability and fitness for a particular purpose. Should the mineral lease awarded by the Louisiana State Mineral Board be subsequently modified, cancelled or abrogated due to the existence of conflicting leases, operating agreements, private claims or other future obligations or conditions which may affect all or any portion of the leased Tract, it shall not relieve the Lessee of the obligation to pay any bonus due thereon to the Louisiana State Mineral Board, nor shall the Louisiana State Mineral Board be obligated to refund any consideration paid by the Lessor prior to such modification, cancellation, or abrogation, including, but not limited to, bonuses, rentals and royalties.

Applicant: Theophilus Oil, Gas & Land Services, LLC

| Bidder | Cash Payment | Price/Acre | Rental | Oil | Gas | Other |
|--------|--------------|------------|--------|-----|-----|-------|
| | | | | | | |
| | | | | | | |
| | | | | | | |
| | | | | | | |

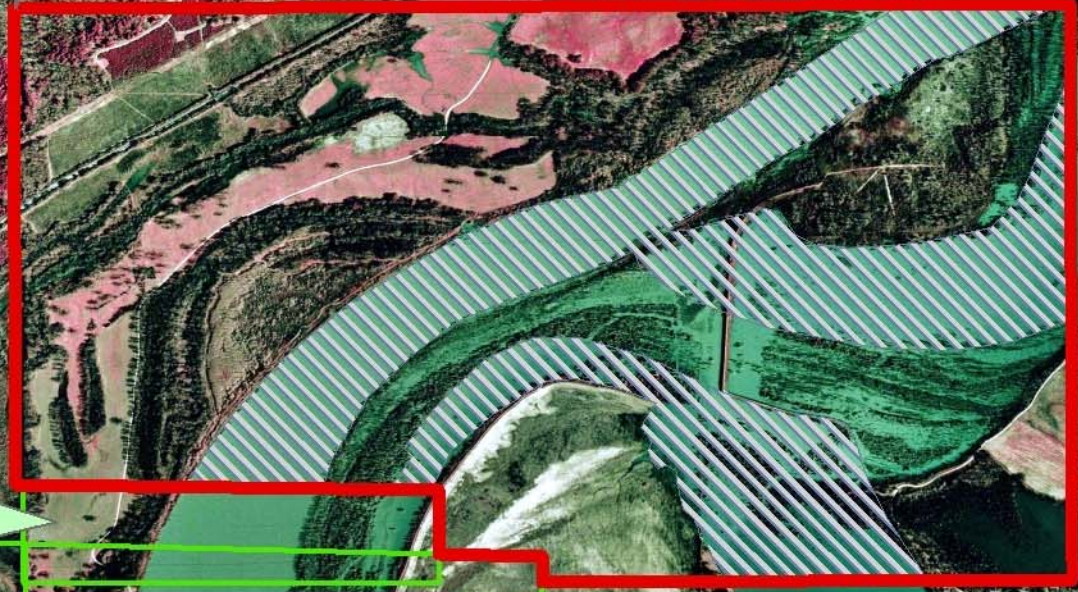
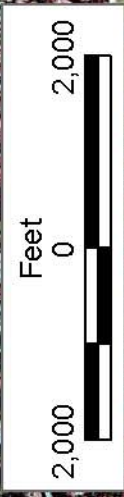


P.O.B.
X=1,735,000.00
Y=503,000.00

RED RIVER PARISH

T12N - R10W

RED RIVER



SL 13697

AO 0158

SL 13045

TRACT 37275 - Calcasieu Parish, Louisiana

All of the lands now or formerly constituting the beds and bottoms of all water bodies of every nature and description the title of which vests in the State of Louisiana, together with all islands arising therein and other lands formed by accretion or by reliction, where allowed by law, excepting tax adjudicated lands, and not presently under mineral lease on April 13, 2005, situated in Calcasieu Parish, Louisiana, and more particularly described as follows: Beginning at a point having Coordinates of X = 1,335,123.32 and Y = 536,384.44; thence East 11,000.00 feet to a point having Coordinates of X = 1,346,123.32 and Y = 536,384.44; thence South 11,200 feet to a point having Coordinates of X = 1,346,123.32 and Y = 525,184.44; thence West 11,000.00 feet to a point having Coordinates of X = 1,335,123.32 and Y = 525,184.44; thence North 11,200.00 feet to the point of beginning, containing approximately **65 acres**, all as more particularly outlined on a plat on file in the Office of Mineral Resources, Department of Natural Resources. All bearings, distances and coordinates are based on Louisiana Coordinate System of 1927, (North or South Zone), where applicable.

NOTE: The above description of the Tract nominated for lease has been provided and corrected, where required, exclusively by the nomination party. Any mineral lease selected from this Tract and awarded by the Louisiana State Mineral Board shall be without warranty of any kind, either express, implied, or statutory, including, but not limited to, the implied warranties of merchantability and fitness for a particular purpose. Should the mineral lease awarded by the Louisiana State Mineral Board be subsequently modified, cancelled or abrogated due to the existence of conflicting leases, operating agreements, private claims or other future obligations or conditions which may affect all or any portion of the leased Tract, it shall not relieve the Lessee of the obligation to pay any bonus due thereon to the Louisiana State Mineral Board, nor shall the Louisiana State Mineral Board be obligated to refund any consideration paid by the Lessor prior to such modification, cancellation, or abrogation, including, but not limited to, bonuses, rentals and royalties.

NOTE: The State of Louisiana does hereby reserve, and this lease shall be subject to, the imprescriptible right of surface use in the nature of a servitude in favor of the Department of Natural Resources, including its Offices and Commissions, for the sole purpose of implementing, constructing, servicing and maintaining approved coastal zone management and/or restoration projects. Utilization of any and all rights derived under this lease by the mineral lessee, its agents, successors or assigns, shall not interfere with nor hinder the reasonable surface use by the Department of Natural Resources, its Offices or Commissions, as herein above reserved.

Applicant: Theophilus Oil, Gas & Land Services, LLC

| Bidder | Cash Payment | Price/Acre | Rental | Oil | Gas | Other |
|--------|--------------|------------|--------|-----|-----|-------|
| | | | | | | |
| | | | | | | |
| | | | | | | |
| | | | | | | |

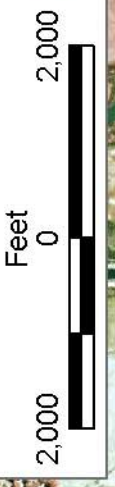


CALCASIEU PARISH

P.O.B
X=1,335,123.32
Y=536,384.44

T11S - R10W

BAYOU CHOUPIQUE



T11S - R11W

TRACT 37276 - Calcasieu Parish, Louisiana

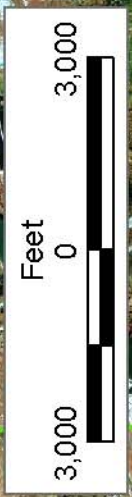
All of the lands now or formerly constituting the beds and bottoms of all water bodies of every nature and description the title of which vests in the State of Louisiana, together with all islands arising therein and other lands formed by accretion or by reliction, where allowed by law, excepting tax adjudicated lands, and not presently under mineral lease on April 13, 2005, situated in Calcasieu Parish, Louisiana, and more particularly described as follows: Beginning at a point having Coordinates of X = 1,346,123.32 and Y = 530,884.44; thence East 11,000.00 feet to a point having Coordinates of X = 1,357,123.32 and Y = 530,884.44; thence South 11,000 feet to a point having Coordinates of X = 1,357,123.32 and Y = 519,884.44; thence West 11,000.00 feet to a point having Coordinates of X = 1,346,123.32 and Y = 519,884.44; thence North 11,000.00 feet to the point of beginning, containing approximately **68 acres**, all as more particularly outlined on a plat on file in the Office of Mineral Resources, Department of Natural Resources. All bearings, distances and coordinates are based on Louisiana Coordinate System of 1927, (North or South Zone), where applicable.

NOTE: The above description of the Tract nominated for lease has been provided and corrected, where required, exclusively by the nomination party. Any mineral lease selected from this Tract and awarded by the Louisiana State Mineral Board shall be without warranty of any kind, either express, implied, or statutory, including, but not limited to, the implied warranties of merchantability and fitness for a particular purpose. Should the mineral lease awarded by the Louisiana State Mineral Board be subsequently modified, cancelled or abrogated due to the existence of conflicting leases, operating agreements, private claims or other future obligations or conditions which may affect all or any portion of the leased Tract, it shall not relieve the Lessee of the obligation to pay any bonus due thereon to the Louisiana State Mineral Board, nor shall the Louisiana State Mineral Board be obligated to refund any consideration paid by the Lessor prior to such modification, cancellation, or abrogation, including, but not limited to, bonuses, rentals and royalties.

NOTE: The State of Louisiana does hereby reserve, and this lease shall be subject to, the imprescriptible right of surface use in the nature of a servitude in favor of the Department of Natural Resources, including its Offices and Commissions, for the sole purpose of implementing, constructing, servicing and maintaining approved coastal zone management and/or restoration projects. Utilization of any and all rights derived under this lease by the mineral lessee, its agents, successors or assigns, shall not interfere with nor hinder the reasonable surface use by the Department of Natural Resources, its Offices or Commissions, as herein above reserved.

Applicant: Theophilus Oil, Gas & Land Services, LLC

| Bidder | Cash Payment | Price/Acre | Rental | Oil | Gas | Other |
|--------|--------------|------------|--------|-----|-----|-------|
| | | | | | | |
| | | | | | | |
| | | | | | | |
| | | | | | | |



GEO 20041101

BAYOU CHOUPIQUE

CALCASIEU PARISH

T11S - R10W



P.O.B.
X=1,346,123.32
Y=530,884.44

TRACT 37277 - Cameron Parish, Louisiana

All of the lands now or formerly constituting the beds and bottoms of all water bodies of every nature and description the title of which vests in the State of Louisiana, together with all islands arising therein and other lands formed by accretion or by reliction, where allowed by law, excepting tax adjudicated lands, and not presently under mineral lease on April 13, 2005, situated in Cameron Parish, Louisiana, and more particularly described as follows: Beginning at a point on the East line of State Lease No. 7555 as amended, and the Southwest corner of State Lease No. 17807, having Coordinates of X = 1,223,381.79 and Y = 485,511.52; thence East 5,479.06 feet along the South line of said State Lease No. 17807 to a point having Coordinates of X = 1,228,860.85 and Y = 485,511.52, also being the most western Northwest corner of State Lease No. 17915; thence South 6,379.85 feet along the West line of said State Lease No. 17915 to its Southwest corner; thence continue South 1,131.67 feet to a point having Coordinates of X = 1,228,860.85 and Y = 478,000.00; thence West 4,860.85 feet to the Southeast corner of State Lease No. 17701 having Coordinates of X = 1,224,000.00 and Y = 478,000.00; thence North 2,263.34 feet along the East line of said State Lease No. 17701 to a point on the South line of said State Lease No. 7555, having Coordinates of X = 1,224,000.00 and Y = 480,263.34; thence along the boundary of said State Lease the following: North 56 degrees 18 minutes 36 seconds East 480.74 feet, North 46 degrees 00 minutes 18 seconds East 403.11 feet, North 32 degrees 04 minutes 56 seconds East 395.38 feet, North 15 degrees 43 minutes 55 seconds West 368.82 feet, North 29 degrees 03 minutes 17 seconds West 514.78 feet, North 36 degrees 52 minutes 12 seconds West 500.00 feet, North 49 degrees 45 minutes 49 seconds West 510.88 feet, North 47 degrees 45 minutes 50 seconds West 513.25 feet, North 43 degrees 01 minutes 30 seconds West 512.96 feet, North 22 degrees 50 minutes 01 seconds West 206.15 feet, North 14 degrees 44 minutes 37 seconds West 196.47 feet, North 220.00 feet, North 07 degrees 58 minutes 11 seconds East 504.88 feet and North 17 degrees 07 minutes 54 seconds East 1,058.48 feet to the point of beginning, containing approximately **818 acres**, all as more particularly outlined on a plat on file in the Office of Mineral Resources, Department of Natural Resources. All bearings, distances and coordinates are based on Louisiana Coordinate System of 1927, (North or South Zone), where applicable.

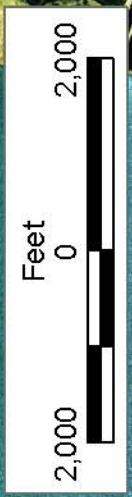
NOTE: The above description of the Tract nominated for lease has been provided and corrected, where required, exclusively by the nomination party. Any mineral lease selected from this Tract and awarded by the Louisiana State Mineral Board shall be without warranty of any kind, either express, implied, or statutory, including, but not limited to, the implied warranties of merchantability and fitness for a particular purpose. Should the mineral lease awarded by the Louisiana State Mineral Board be subsequently modified, cancelled or abrogated due to the existence of conflicting leases, operating agreements, private claims or other future obligations or conditions which may affect all or any portion of the leased Tract, it shall not relieve the Lessee of the obligation to

pay any bonus due thereon to the Louisiana State Mineral Board, nor shall the Louisiana State Mineral Board be obligated to refund any consideration paid by the Lessor prior to such modification, cancellation, or abrogation, including, but not limited to, bonuses, rentals and royalties.

NOTE: The State of Louisiana does hereby reserve, and this lease shall be subject to, the imprescriptible right of surface use in the nature of a servitude in favor of the Department of Natural Resources, including its Offices and Commissions, for the sole purpose of implementing, constructing, servicing and maintaining approved coastal zone management and/or restoration projects. Utilization of any and all rights derived under this lease by the mineral lessee, its agents, successors or assigns, shall not interfere with nor hinder the reasonable surface use by the Department of Natural Resources, its Offices or Commissions, as herein above reserved.

Applicant: Palmer & Palmer

| Bidder | Cash Payment | Price/Acre | Rental | Oil | Gas | Other |
|--------|--------------|------------|--------|-----|-----|-------|
| | | | | | | |
| | | | | | | |
| | | | | | | |
| | | | | | | |



CAMERON PARISH

SABINE RIVER

SABINE LAKE

SL 17807

SL 17915

P.O. B.
X=1,223,381.79
Y=485,511.52

SL 7555

SL 17701

SL 3459

TX

LA

TRACT 37278 - Cameron Parish, Louisiana

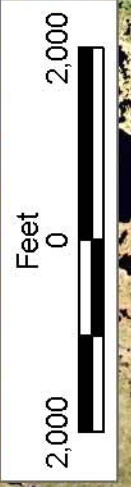
All of the lands now or formerly constituting the beds and bottoms of all water bodies of every nature and description the title of which vests in the State of Louisiana, together with all islands arising therein and other lands formed by accretion or by reliction, where allowed by law, excepting tax adjudicated lands, and not presently under mineral lease on April 13, 2005, situated in Cameron Parish, Louisiana, and more particularly described as follows: Beginning at a point having Coordinates of X = 1,227,563.87 and Y = 472,850.00; thence North 5,150.00 feet to a point having Coordinates of X = 1,227,563.87 and Y = 478,000.00; thence East 1,296.98 feet to a point having Coordinates of X = 1,228,860.85 and Y = 478,000.00; thence North 1,131.67 feet to the Southwest corner of State Lease No. 17915 having Coordinates of X = 1,228,860.85 and Y = 479,131.67; thence East 4,666.74 feet along the South line of said State Lease No. 17915 to its Southeast corner having Coordinates of X = 1,233,527.59 and Y = 479,131.67; thence South 6,281.67 feet to a point having Coordinates of X = 1,233,527.59 and Y = 472,850.00; thence West 5,963.72 feet to the point of beginning, containing approximately **673 acres**, all as more particularly outlined on a plat on file in the Office of Mineral Resources, Department of Natural Resources. All bearings, distances and coordinates are based on Louisiana Coordinate System of 1927, (North or South Zone), where applicable.

NOTE: The above description of the Tract nominated for lease has been provided and corrected, where required, exclusively by the nomination party. Any mineral lease selected from this Tract and awarded by the Louisiana State Mineral Board shall be without warranty of any kind, either express, implied, or statutory, including, but not limited to, the implied warranties of merchantability and fitness for a particular purpose. Should the mineral lease awarded by the Louisiana State Mineral Board be subsequently modified, cancelled or abrogated due to the existence of conflicting leases, operating agreements, private claims or other future obligations or conditions which may affect all or any portion of the leased Tract, it shall not relieve the Lessee of the obligation to pay any bonus due thereon to the Louisiana State Mineral Board, nor shall the Louisiana State Mineral Board be obligated to refund any consideration paid by the Lessor prior to such modification, cancellation, or abrogation, including, but not limited to, bonuses, rentals and royalties.

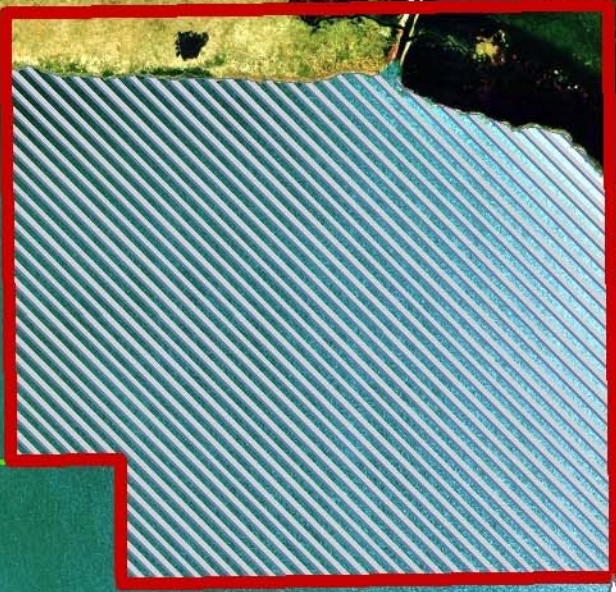
NOTE: The State of Louisiana does hereby reserve, and this lease shall be subject to, the imprescriptible right of surface use in the nature of a servitude in favor of the Department of Natural Resources, including its Offices and Commissions, for the sole purpose of implementing, constructing, servicing and maintaining approved coastal zone management and/or restoration projects. Utilization of any and all rights derived under this lease by the mineral lessee, its agents, successors or assigns, shall not interfere with nor hinder the reasonable surface use by the Department of Natural Resources, its Offices or Commissions, as herein above reserved.

Applicant: Palmer & Palmer

| Bidder | Cash Payment | Price/Acre | Rental | Oil | Gas | Other |
|--------|--------------|------------|--------|-----|-----|-------|
| | | | | | | |
| | | | | | | |
| | | | | | | |
| | | | | | | |



SL 17915



P.O.B.
X=1,227,563.87
Y=472,850.00

CAMERON PARISH

SABINE LAKE

TRACT 37279 - Cameron Parish, Louisiana

All of the lands now or formerly constituting the beds and bottoms of all water bodies of every nature and description the title of which vests in the State of Louisiana, together with all islands arising therein and other lands formed by accretion or by reliction, where allowed by law, excepting tax adjudicated lands, and not presently under mineral lease on April 13, 2005, situated in Cameron Parish, Louisiana, and more particularly described as follows: Beginning at a point having Coordinates of X = 1,227,563.87 and Y = 472,850.00; thence West 6,703.87 feet to a point on the East boundary of State Lease No. 17420 having Coordinates of X = 1,220,860.00 and Y = 472,850.00; thence North 5,150.00 feet along the East side of said State Lease No. 17420 to a point, also being a Southwest corner of State Lease No. 17701, having Coordinates of X = 1,220,860.00 and Y = 478,000.00; thence East 3,140.00 feet along the South line of said State Lease No. 17701 to its Southeast corner; thence continue East 3,563.87 feet to a point having Coordinates of X = 1,227,563.87 and Y = 478,000.00; thence South 5,150.00 feet to the point of beginning, containing approximately **792.58 acres**, all as more particularly outlined on a plat on file in the Office of Mineral Resources, Department of Natural Resources. All bearings, distances and coordinates are based on Louisiana Coordinate System of 1927, (North or South Zone), where applicable.

NOTE: The above description of the Tract nominated for lease has been provided and corrected, where required, exclusively by the nomination party. Any mineral lease selected from this Tract and awarded by the Louisiana State Mineral Board shall be without warranty of any kind, either express, implied, or statutory, including, but not limited to, the implied warranties of merchantability and fitness for a particular purpose. Should the mineral lease awarded by the Louisiana State Mineral Board be subsequently modified, cancelled or abrogated due to the existence of conflicting leases, operating agreements, private claims or other future obligations or conditions which may affect all or any portion of the leased Tract, it shall not relieve the Lessee of the obligation to pay any bonus due thereon to the Louisiana State Mineral Board, nor shall the Louisiana State Mineral Board be obligated to refund any consideration paid by the Lessor prior to such modification, cancellation, or abrogation, including, but not limited to, bonuses, rentals and royalties.

NOTE: The State of Louisiana does hereby reserve, and this lease shall be subject to, the imprescriptible right of surface use in the nature of a servitude in favor of the Department of Natural Resources, including its Offices and Commissions, for the sole purpose of implementing, constructing, servicing and maintaining approved coastal zone management and/or restoration projects. Utilization of any and all rights derived under this lease by the mineral lessee, its agents, successors or assigns, shall not interfere with nor hinder the reasonable surface use by the Department of Natural Resources, its Offices or Commissions, as herein above reserved.

Applicant: Palmer & Palmer

| Bidder | Cash Payment | Price/Acre | Rental | Oil | Gas | Other |
|--------|--------------|------------|--------|-----|-----|-------|
| | | | | | | |
| | | | | | | |
| | | | | | | |
| | | | | | | |



CAMERON PARISH

SABINE LAKE

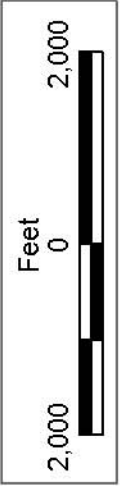
TX

LA

SL 17701

SL 17420

P.O.B.
X=1,227,563.87
Y=472,850.00



TRACT 37280 - Cameron Parish, Louisiana

All of the lands now or formerly constituting the beds and bottoms of all water bodies of every nature and description the title of which vests in the State of Louisiana, together with all islands arising therein and other lands formed by accretion or by reliction, where allowed by law, excepting tax adjudicated lands, and not presently under mineral lease on April 13, 2005, situated in Cameron Parish, Louisiana, and more particularly described as follows: Beginning at a point having Coordinates of X = 1,227,563.87 and Y = 466,894.24; thence West 6,703.87 feet to a point having Coordinates of X = 1,220,860.00 and Y = 466,894.24; thence North 3,925.76 feet to the Southeast corner of State Lease No. 17420 having Coordinates of X = 1,220,860.00 and Y = 470,820.00; thence along the East boundary of said State Lease No. 17420 North 2,030.00 feet to a point having Coordinates of X = 1,220,860.00 and Y = 472,850.00; thence East 6,703.87 feet to a point having Coordinates of X = 1,227,563.87 and Y = 472,850.00; thence South 5,955.76 feet to the point of beginning, containing approximately **916.59 acres**, all as more particularly outlined on a plat on file in the Office of Mineral Resources, Department of Natural Resources. All bearings, distances and coordinates are based on Louisiana Coordinate System of 1927, (North or South Zone), where applicable.

NOTE: The above description of the Tract nominated for lease has been provided and corrected, where required, exclusively by the nomination party. Any mineral lease selected from this Tract and awarded by the Louisiana State Mineral Board shall be without warranty of any kind, either express, implied, or statutory, including, but not limited to, the implied warranties of merchantability and fitness for a particular purpose. Should the mineral lease awarded by the Louisiana State Mineral Board be subsequently modified, cancelled or abrogated due to the existence of conflicting leases, operating agreements, private claims or other future obligations or conditions which may affect all or any portion of the leased Tract, it shall not relieve the Lessee of the obligation to pay any bonus due thereon to the Louisiana State Mineral Board, nor shall the Louisiana State Mineral Board be obligated to refund any consideration paid by the Lessor prior to such modification, cancellation, or abrogation, including, but not limited to, bonuses, rentals and royalties.

NOTE: The State of Louisiana does hereby reserve, and this lease shall be subject to, the imprescriptible right of surface use in the nature of a servitude in favor of the Department of Natural Resources, including its Offices and Commissions, for the sole purpose of implementing, constructing, servicing and maintaining approved coastal zone management and/or restoration projects. Utilization of any and all rights derived under this lease by the mineral lessee, its agents, successors or assigns, shall not interfere with nor hinder the reasonable surface use by the Department of Natural Resources, its Offices or Commissions, as herein above reserved.

Applicant: Palmer & Palmer

| Bidder | Cash Payment | Price/Acre | Rental | Oil | Gas | Other |
|--------|--------------|------------|--------|-----|-----|-------|
| | | | | | | |
| | | | | | | |
| | | | | | | |
| | | | | | | |



CAMERON PARISH

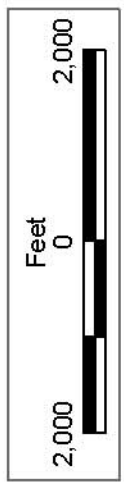
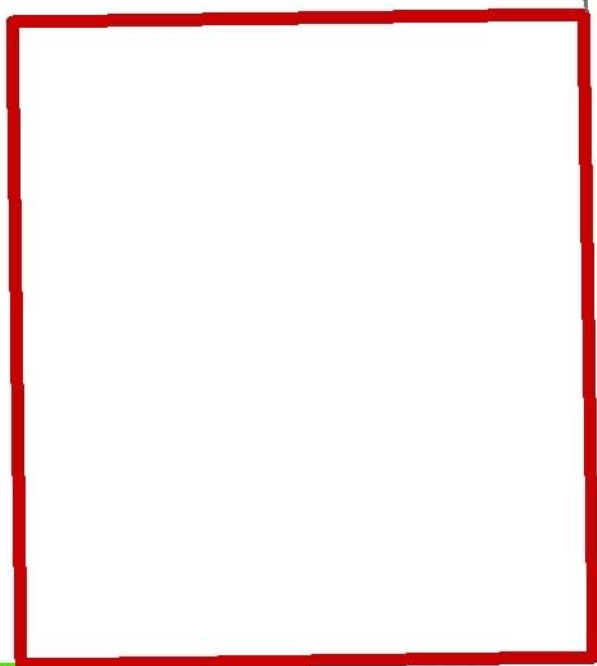
SABINE LAKE

SL 17420

LA

TX

P.O.B.
X=1,227,563.87
Y=466,894.24



TRACT 37281 - Cameron Parish, Louisiana

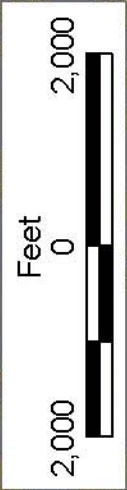
All of the lands now or formerly constituting the beds and bottoms of all water bodies of every nature and description the title of which vests in the State of Louisiana, together with all islands arising therein and other lands formed by accretion or by reliction, where allowed by law, excepting tax adjudicated lands, and not presently under mineral lease on April 13, 2005, situated in Cameron Parish, Louisiana, and more particularly described as follows: Beginning at a point having Coordinates of X = 1,227,563.87 and Y = 466,894.24; thence North 5,955.76 feet to a point having Coordinates of X = 1,227,563.87 and Y = 472,850.00; thence East 5,963.72 feet to a point having Coordinates of X = 1,233,527.59 and Y = 472,850.00; thence South 5,955.76 feet to a point having Coordinates of X = 1,233,527.59 and Y = 466,894.24; thence West 5,963.72 feet to the point of beginning, containing approximately **435 acres**, all as more particularly outlined on a plat on file in the Office of Mineral Resources, Department of Natural Resources. All bearings, distances and coordinates are based on Louisiana Coordinate System of 1927, (North or South Zone), where applicable.

NOTE: The above description of the Tract nominated for lease has been provided and corrected, where required, exclusively by the nomination party. Any mineral lease selected from this Tract and awarded by the Louisiana State Mineral Board shall be without warranty of any kind, either express, implied, or statutory, including, but not limited to, the implied warranties of merchantability and fitness for a particular purpose. Should the mineral lease awarded by the Louisiana State Mineral Board be subsequently modified, cancelled or abrogated due to the existence of conflicting leases, operating agreements, private claims or other future obligations or conditions which may affect all or any portion of the leased Tract, it shall not relieve the Lessee of the obligation to pay any bonus due thereon to the Louisiana State Mineral Board, nor shall the Louisiana State Mineral Board be obligated to refund any consideration paid by the Lessor prior to such modification, cancellation, or abrogation, including, but not limited to, bonuses, rentals and royalties.

NOTE: The State of Louisiana does hereby reserve, and this lease shall be subject to, the imprescriptible right of surface use in the nature of a servitude in favor of the Department of Natural Resources, including its Offices and Commissions, for the sole purpose of implementing, constructing, servicing and maintaining approved coastal zone management and/or restoration projects. Utilization of any and all rights derived under this lease by the mineral lessee, its agents, successors or assigns, shall not interfere with nor hinder the reasonable surface use by the Department of Natural Resources, its Offices or Commissions, as herein above reserved.

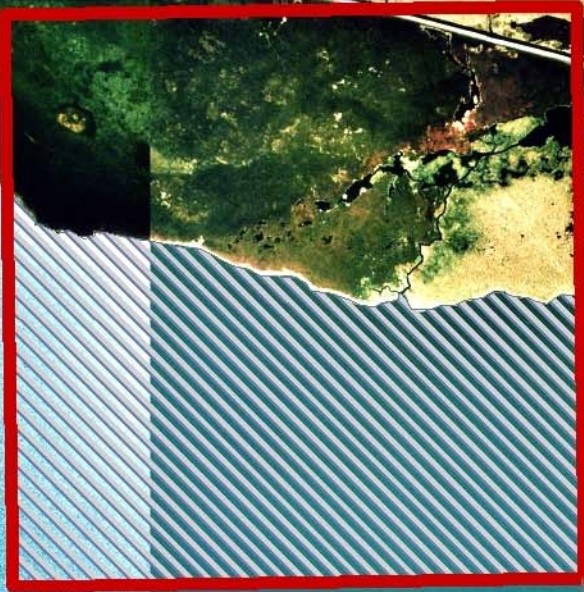
Applicant: Palmer & Palmer

| Bidder | Cash Payment | Price/Acre | Rental | Oil | Gas | Other |
|--------|--------------|------------|--------|-----|-----|-------|
| | | | | | | |
| | | | | | | |
| | | | | | | |
| | | | | | | |



CAMERON PARISH

SABINE LAKE



P.O.B.
X=1,227,563.87
Y=466,894.24

TRACT 37282 - Cameron Parish, Louisiana

All of the lands now or formerly constituting the beds and bottoms of all water bodies of every nature and description the title of which vests in the State of Louisiana, together with all islands arising therein and other lands formed by accretion or by reliction, where allowed by law, excepting tax adjudicated lands, and not presently under mineral lease on April 13, 2005, situated in Cameron Parish, Louisiana, and more particularly described as follows: Beginning at a point having Coordinates of X = 1,220,860.00 and Y = 466,894.24; thence West 7,062.13 feet to a point on the Texas Louisiana Boundary having Coordinates of X = 1,213,797.87 and Y = 466,894.24; thence on the said Texas Louisiana Boundary the following courses: North 14 degrees 23 minutes 58 seconds East 2,019.19 feet to a point having Coordinates of X = 1,214,300.00 and Y = 468,850.00, North 11 degrees 52 minutes 43 seconds East 1,481.73 feet to a point having Coordinates of X = 1,214,605.00 and Y = 470,300.00 and North 25 degrees 46 minutes 49 seconds East 577.48 feet to the Southwest corner of State Lease No. 17420 having Coordinates of X = 1,214,856.16 and Y = 470,820.00; thence East 6,003.84 feet along the South Line of said State Lease No. 17420 to a point having Coordinates of X = 1,220,860.00 and Y = 470,820.00; thence South 3,925.76 feet to the point of beginning, containing approximately **592.26 acres, LESS AND EXCEPT** that portion thereof, if any, located West of the boundary line between the States of Texas and Louisiana as determined by the report of the Special Master and adjudicated by the Supreme Court of the United States in litigation styled **Texas v. Louisiana, et al No. 36 Original**, or as otherwise approved by said court, all as more particularly outlined on a plat on file in the Office of Mineral Resources, Department of Natural Resources. All bearings, distances and coordinates are based on Louisiana Coordinate System of 1927, (North or South Zone), where applicable.

NOTE: The above description of the Tract nominated for lease has been provided and corrected, where required, exclusively by the nomination party. Any mineral lease selected from this Tract and awarded by the Louisiana State Mineral Board shall be without warranty of any kind, either express, implied, or statutory, including, but not limited to, the implied warranties of merchantability and fitness for a particular purpose. Should the mineral lease awarded by the Louisiana State Mineral Board be subsequently modified, cancelled or abrogated due to the existence of conflicting leases, operating agreements, private claims or other future obligations or conditions which may affect all or any portion of the leased Tract, it shall not relieve the Lessee of the obligation to pay any bonus due thereon to the Louisiana State Mineral Board, nor shall the Louisiana State Mineral Board be obligated to refund any consideration paid by the Lessor prior to such modification, cancellation, or abrogation, including, but not limited to, bonuses, rentals and royalties.

NOTE: The State of Louisiana does hereby reserve, and this lease shall be subject to, the imprescriptible right of surface use in the nature of a servitude in favor of the Department of Natural Resources, including its

Offices and Commissions, for the sole purpose of implementing, constructing, servicing and maintaining approved coastal zone management and/or restoration projects. Utilization of any and all rights derived under this lease by the mineral lessee, its agents, successors or assigns, shall not interfere with nor hinder the reasonable surface use by the Department of Natural Resources, its Offices or Commissions, as herein above reserved.

Applicant: Palmer & Palmer

| Bidder | Cash Payment | Price/Acre | Rental | Oil | Gas | Other |
|--------|--------------|------------|--------|-----|-----|-------|
| | | | | | | |
| | | | | | | |
| | | | | | | |
| | | | | | | |



CAMERON PARISH

SABINE LAKE

P.O.B.
X=1,220,860.00
Y=466,894.24

SL 17420

LA

TX

