

TRACT 37263 - Portion of Block and 27, West Cameron Area, Revised, Cameron Parish, Louisiana

The beds and bottoms of all water bodies belonging to the State of Louisiana located in Block 27, West Cameron Area, Revised, together with any present lands formed by accretion to the shoreline or islands formed therein, located in Cameron Parish, Louisiana, owned by and not presently under mineral lease as of April 13, 2005, from the State of Louisiana, the geographical area of which is more fully described as follows: Beginning at the Northwest corner of Block 27, West Cameron Area, Revised, having Coordinates of X = 1,376,693.66 and Y = 393,790.24; thence East 9,061.34 feet along the North line of said Block 27 to a point on the West line of State Lease No. 18360 having Coordinates of X = 1,385,755.00 and Y = 393,790.24; thence along the boundary of said State Lease No. 18360 the following courses and distances: South 135.24 feet, South 61 degrees 34 minutes 57 seconds East 830.02 feet, South 74 degrees 36 minutes 27 seconds East 1,280.95 feet, South 86 degrees 45 minutes 24 seconds East 3,446.52 feet and North 1,065.24 feet along the East line of said State Lease No. 18360 to a point on the North line of said Block 27 having Coordinates of X = 1,391,161.00 and Y = 393,790.24; thence East 290.71 feet along the North line of said Block 27 to its Northeast corner having Coordinates of X = 1,391,451.71 and Y = 393,790.24; thence South 2,850.79 feet along the East line of said Block 27 to a point having Coordinates of X = 1,391,451.71 and Y = 390,939.45; thence Northwesterly on a straight line to a point having Coordinates of X = 1,390,919.00 and Y = 390,971.00; thence Northwesterly on an arc having a radius of 18,240.60 and a center at X = 1,392,016.00 and Y = 409,179.00 to a point having Coordinates of X = 1,390,575.00 and Y = 390,995.00; thence Southwesterly on a straight line to a point having Coordinates of X = 1,386,958.00 and Y = 390,977.00; thence Southwesterly on a straight line to a point having Coordinates of X = 1,385,797.00 and Y = 390,942.00; thence Southwesterly on a straight line to a point having Coordinates of X = 1,383,281.00 and Y = 390,516.00; thence Southwesterly on an arc having a radius of 18,240.60 feet and a center at X = 1,380,197.00 and Y = 408,494.00 to a point having Coordinates of X = 1,382,827.00 and Y = 390,444.00; thence Southwesterly on a straight line to a point having Coordinates of X = 1,380,530.00 and Y = 390,115.00; thence Southwesterly on a straight line to a point having Coordinates of X = 1,379,793.00 and Y = 389,887.00; thence Southwesterly on an arc having a radius of 18,240.60 feet and a center at X = 1,363,392.00 and Y = 397,870.00 to a point on the West line of said Block 27 having Coordinates of X = 1,376,693.66 and Y = 385,388.34; thence North 8,401.90 feet along the West line of said Block 27 to the point of beginning, containing approximately **1,178.81 acres, LESS AND EXCEPT** that portion thereof, if any, lying seaward of the line three nautical miles from the coast line of Louisiana, as said three mile line has been decreed by the Supreme Court of the United States, as determined by a Special Master appointed therein, in litigation styled **United States v. State of Louisiana et al No. 9 Original**, in 1975, all as more particularly outlined on a plat in the Office of Mineral Resources, Department of Natural

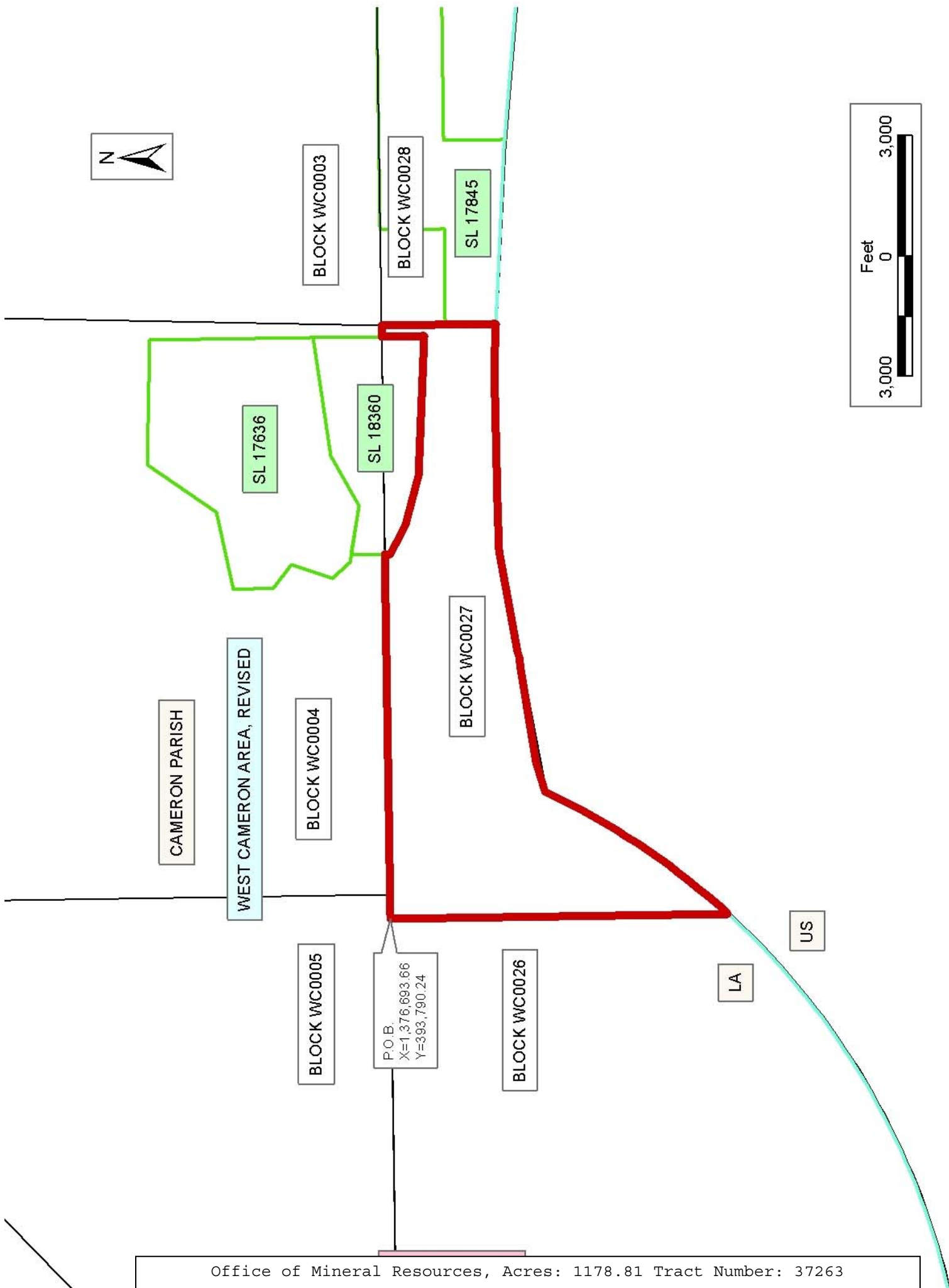
Resources. All bearings, distances and coordinates are based on the Louisiana Coordinate System of 1927, (South Zone).

NOTE: The above description of the Tract nominated for lease has been provided and corrected, where required, exclusively by the nomination party. Any mineral lease selected from this Tract and awarded by the Louisiana State Mineral Board shall be without warranty of any kind, either express, implied, or statutory, including, but not limited to, the implied warranties of merchantability and fitness for a particular purpose. Should the mineral lease awarded by the Louisiana State Mineral Board be subsequently modified, cancelled or abrogated due to the existence of conflicting leases, operating agreements, private claims or other future obligations or conditions which may affect all or any portion of the leased Tract, it shall not relieve the Lessee of the obligation to pay any bonus due thereon to the Louisiana State Mineral Board, nor shall the Louisiana State Mineral Board be obligated to refund any consideration paid by the Lessor prior to such modification, cancellation, or abrogation, including, but not limited to, bonuses, rentals and royalties.

NOTE: The State of Louisiana does hereby reserve, and this lease shall be subject to, the imprescriptible right of surface use in the nature of a servitude in favor of the Department of Natural Resources, including its Offices and Commissions, for the sole purpose of implementing, constructing, servicing and maintaining approved coastal zone management and/or restoration projects. Utilization of any and all rights derived under this lease by the mineral lessee, its agents, successors or assigns, shall not interfere with nor hinder the reasonable surface use by the Department of Natural Resources, its Offices or Commissions, as herein above reserved.

Applicant: Harold J. Anderson, Inc.

Bidder	Cash Payment	Price/ Acre	Rental	Oil	Gas	Other



TRACT 37264 - Portion of Block 32, West Cameron Area, Revised, Cameron Parish, Louisiana

The beds and bottoms of all water bodies belonging to the State of Louisiana located in Block 32, West Cameron Area, Revised, together with any present lands formed by accretion to the shoreline or islands formed therein, located in Cameron Parish, Louisiana, owned by and not presently under mineral lease as of April 13, 2005, from the State of Louisiana, the geographical area of which is more fully described as follows: Beginning at a point on the East line of Block 32, West Cameron Area, Revised, having Coordinates of X = 1,465,241.95 and Y = 383,035.00; thence West 6,369.95 feet to the most Northerly Northeast corner of State Lease No. 18237 having Coordinates of X = 1,458,872.00 and Y = 383,035.00; thence West 4,767.00 feet along the North line of said State Lease No. 18237 to a point having Coordinates of X = 1,454,105.00 and Y = 383,035.00; thence North 10,015.00 feet to a point on the Northern boundary of said Block 32, said boundary also being the Coastline as per the Supreme Court Decree dated June 16, 1975, having Coordinates of X = 1,454,105 and Y = 393,050; thence Southeasterly on a straight line to a point having Coordinates of X = 1,460,435 and Y = 391,260; thence Southeasterly on a straight line to the Northeast corner of said Block 32 having Coordinates of X = 1,465,241.95 and Y = 389,642.21; thence South 6,607.21 feet along the East line of said Block 32 to the point of beginning, containing approximately **2,143.67 acres**, all as more particularly outlined on a plat on file in the Office of Mineral Resources, Department of Natural Resources. All bearings, distances and coordinates are based on Louisiana Coordinate System of 1927, (North or South Zone).

NOTE: The above description of the Tract nominated for lease has been provided and corrected, where required, exclusively by the nomination party. Any mineral lease selected from this Tract and awarded by the Louisiana State Mineral Board shall be without warranty of any kind, either express, implied, or statutory, including, but not limited to, the implied warranties of merchantability and fitness for a particular purpose. Should the mineral lease awarded by the Louisiana State Mineral Board be subsequently modified, cancelled or abrogated due to the existence of conflicting leases, operating agreements, private claims or other future obligations or conditions which may affect all or any portion of the leased Tract, it shall not relieve the Lessee of the obligation to pay any bonus due thereon to the Louisiana State Mineral Board, nor shall the Louisiana State Mineral Board be obligated to refund any consideration paid by the Lessor prior to such modification, cancellation, or abrogation, including, but not limited to, bonuses, rentals and royalties.

NOTE: The State of Louisiana does hereby reserve, and this lease shall be subject to, the imprescriptible right of surface use in the nature of a servitude in favor of the Department of Natural Resources, including its Offices and Commissions, for the sole purpose of implementing, constructing, servicing and maintaining approved coastal zone management and/or restoration projects. Utilization of any and all rights derived

under this lease by the mineral lessee, its agents, successors or assigns, shall not interfere with nor hinder the reasonable surface use by the Department of Natural Resources, its Offices or Commissions, as herein above reserved.

Applicant: Merlin Exploration, Inc.

Bidder	Cash Payment	Price/ Acre	Rental	Oil	Gas	Other



CAMERON PARISH

WEST CAMERON AREA, REVISED

BLOCK WC0032

BLOCK EC0001

P.O.B.
X=1,465,241.95
Y=383,035.00

SL 18237

SL 1170



TRACT 37265 - Portion of Block 24, West Cameron Area, Revised, Cameron Parish, Louisiana

The beds and bottoms of all water bodies belonging to the State of Louisiana located in Block 24, West Cameron Area, Revised, together with any present lands formed by accretion to the shoreline or islands formed therein, located in Cameron Parish, Louisiana, owned by and not presently under mineral lease as of April 13, 2005, from the State of Louisiana, the geographical area of which is more fully described as follows: Beginning at the Northeast corner of Block 24, West Cameron Area, Revised, having Coordinates of X = 1,347,177.57 and Y = 393,790.24; thence South 7,023.29 feet along the East line of said Block 24 to a point on the Three Mile Decree line derived from the June 16, 1975 Decree in the United States vs. Louisiana No. 9 Original, having Coordinates of X = 1,347,177.57 and Y = 386,766.95; thence along said Three Mile Decree line the following courses: North Westerly on a straight line to a point having Coordinates of X = 1,339,580 and Y = 387,874 and Northwesterly on a straight line to a point on the West line of said Block 24 having Coordinates of X = 1,332,419.52 and Y = 388,681.65; thence North 5,108.59 feet along the West line of said Block 24 to its Northwest corner having Coordinates of X = 1,332,419.52 and Y = 393,790.24; thence East 14,758.05 feet along the North line of said Block 24 to the point of beginning, containing approximately **2,034.57 acres, LESS AND EXCEPT** that portion thereof, if any, lying seaward of the line three nautical miles from the coast line of Louisiana, as said three mile line has been decreed by the Supreme Court of the United States, as determined by a Special Master appointed therein, in litigation styled **United States v. State of Louisiana et al No. 9 Original**, in 1975, all as more particularly outlined on a plat in the Office of Mineral Resources, Department of Natural Resources. All bearings, distances and coordinates are based on the Louisiana Coordinate System of 1927, (South Zone).

NOTE: The above description of the Tract nominated for lease has been provided and corrected, where required, exclusively by the nomination party. Any mineral lease selected from this Tract and awarded by the Louisiana State Mineral Board shall be without warranty of any kind, either express, implied, or statutory, including, but not limited to, the implied warranties of merchantability and fitness for a particular purpose. Should the mineral lease awarded by the Louisiana State Mineral Board be subsequently modified, cancelled or abrogated due to the existence of conflicting leases, operating agreements, private claims or other future obligations or conditions which may affect all or any portion of the leased Tract, it shall not relieve the Lessee of the obligation to pay any bonus due thereon to the Louisiana State Mineral Board, nor shall the Louisiana State Mineral Board be obligated to refund any consideration paid by the Lessor prior to such modification, cancellation, or abrogation, including, but not limited to, bonuses, rentals and royalties.

NOTE: The State of Louisiana does hereby reserve, and this lease shall be subject to, the imprescriptible right of surface use in the nature of a

servitude in favor of the Department of Natural Resources, including its Offices and Commissions, for the sole purpose of implementing, constructing, servicing and maintaining approved coastal zone management and/or restoration projects. Utilization of any and all rights derived under this lease by the mineral lessee, its agents, successors or assigns, shall not interfere with nor hinder the reasonable surface use by the Department of Natural Resources, its Offices or Commissions, as herein above reserved.

Applicant: Merlin Exploration, Inc.

Bidder	Cash Payment	Price/ Acre	Rental	Oil	Gas	Other



P.O.B.
X=1,347,177.57
Y=393,790.24

CAMERON PARISH

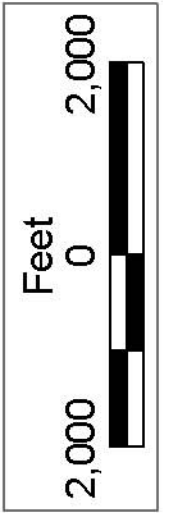
BLOCK WC0007

BLOCK WC0024

WEST CAMERON AREA, REVISED

LA

US



TRACT 37266 - Portion of Block 25, West Cameron Area, Revised, Cameron Parish, Louisiana

The beds and bottoms of all water bodies belonging to the State of Louisiana located in Block 25, West Cameron Area, Revised, together with any present lands formed by accretion to the shoreline or islands formed therein, located in Cameron Parish, Louisiana, owned by and not presently under mineral lease as of April 13, 2005, from the State of Louisiana, the geographical area of which is more fully described as follows: Beginning at the Northwest corner of Block 25, West Cameron Area, Revised, having Coordinates of X = 1,347,177.57 and Y = 393,790.24; thence East 14,758.05 feet along the North line of said Block 25 to its Northeast corner having Coordinates of X = 1,361,935.62 and Y = 393,790.24; thence South 7,023.29 feet along the East line of said Block 25 to a point having Coordinates of X = 1,361,935.62 and Y = 386,766.95; thence West 14,758.05 feet to a point on the West line of said Block 25, also being a point on the Three Mile Decree line derived from the June 16, 1975 Decree in the United States vs. Louisiana No. 9 Original, having Coordinates of X = 1,347,177.57 and Y = 386,766.95; thence North 7,023.29 feet along the West line of said Block 25 to the point of beginning, containing approximately **2,379.48 acres, LESS AND EXCEPT** that portion thereof, if any, lying seaward of the line three nautical miles from the coast line of Louisiana, as said three mile line has been decreed by the Supreme Court of the United States, as determined by a Special Master appointed therein, in litigation styled **United States v. State of Louisiana et al No. 9 Original**, in 1975, all as more particularly outlined on a plat in the Office of Mineral Resources, Department of Natural Resources. All bearings, distances and coordinates are based on the Louisiana Coordinate System of 1927, (South Zone).

NOTE: The above description of the Tract nominated for lease has been provided and corrected, where required, exclusively by the nomination party. Any mineral lease selected from this Tract and awarded by the Louisiana State Mineral Board shall be without warranty of any kind, either express, implied, or statutory, including, but not limited to, the implied warranties of merchantability and fitness for a particular purpose. Should the mineral lease awarded by the Louisiana State Mineral Board be subsequently modified, cancelled or abrogated due to the existence of conflicting leases, operating agreements, private claims or other future obligations or conditions which may affect all or any portion of the leased Tract, it shall not relieve the Lessee of the obligation to pay any bonus due thereon to the Louisiana State Mineral Board, nor shall the Louisiana State Mineral Board be obligated to refund any consideration paid by the Lessor prior to such modification, cancellation, or abrogation, including, but not limited to, bonuses, rentals and royalties.

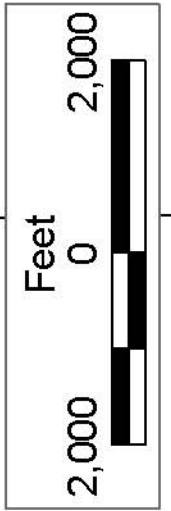
NOTE: The State of Louisiana does hereby reserve, and this lease shall be subject to, the imprescriptible right of surface use in the nature of a servitude in favor of the Department of Natural Resources, including its Offices and Commissions, for the sole purpose of implementing, constructing, servicing and maintaining approved coastal zone management

and/or restoration projects. Utilization of any and all rights derived under this lease by the mineral lessee, its agents, successors or assigns, shall not interfere with nor hinder the reasonable surface use by the Department of Natural Resources, its Offices or Commissions, as herein above reserved.

NOTE: It appears, according to our records, that a portion of this Tract is located within the restrictive safety fairway area as set out by the Corps of Engineers, U.S. Army and/or the restrictive anchorage area as set out by the U.S. Coast Guard.

Applicant: Merlin Exploration, Inc.

Bidder	Cash Payment	Price/ Acre	Rental	Oil	Gas	Other



CAMERON PARISH

BLOCK WC0006

BLOCK WC0025

WEST CAMERON AREA, REVISED

P.O.B.
X=1,347,177.57
Y=393,790.24

LA

US

TRACT 37267 - Portion of Block 28, West Cameron Area, Revised, Cameron Parish, Louisiana

The beds and bottoms of all water bodies belonging to the State of Louisiana located in Block 28, West Cameron Area, Revised, together with any present lands formed by accretion to the shoreline or islands formed therein, located in Cameron Parish, Louisiana, owned by and not presently under mineral lease as of April 13, 2005, from the State of Louisiana, the geographical area of which is more fully described as follows: Beginning at a point within Block 28, West Cameron Area, Revised, also being a corner of State Lease No. 17845 having Coordinates of X = 1,396,025.00 and Y = 390,660.98; thence along the boundary of said State Lease No. 17845 the following courses and distances: North 1,514.01 feet, East 4,475.00 feet and South 1,964.98 feet to a corner of said State Lease No. 17845 having Coordinates of X = 1,400,500.00 and Y = 390,210.01; thence Northwesterly on a straight line to a point having Coordinates of X = 1,400,158.00 and Y = 390,267.00; thence Northwesterly on a straight line to the point of beginning, containing approximately **177.54 acres, LESS AND EXCEPT** that portion thereof, if any, lying seaward of the line three nautical miles from the coast line of Louisiana, as said three mile line has been decreed by the Supreme Court of the United States, as determined by a Special Master appointed therein, in litigation styled **United States v. State of Louisiana et al No. 9 Original**, in 1975, all as more particularly outlined on a plat in the Office of Mineral Resources, Department of Natural Resources. All bearings, distances and coordinates are based on the Louisiana Coordinate System of 1927, (South Zone).

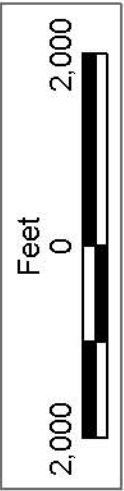
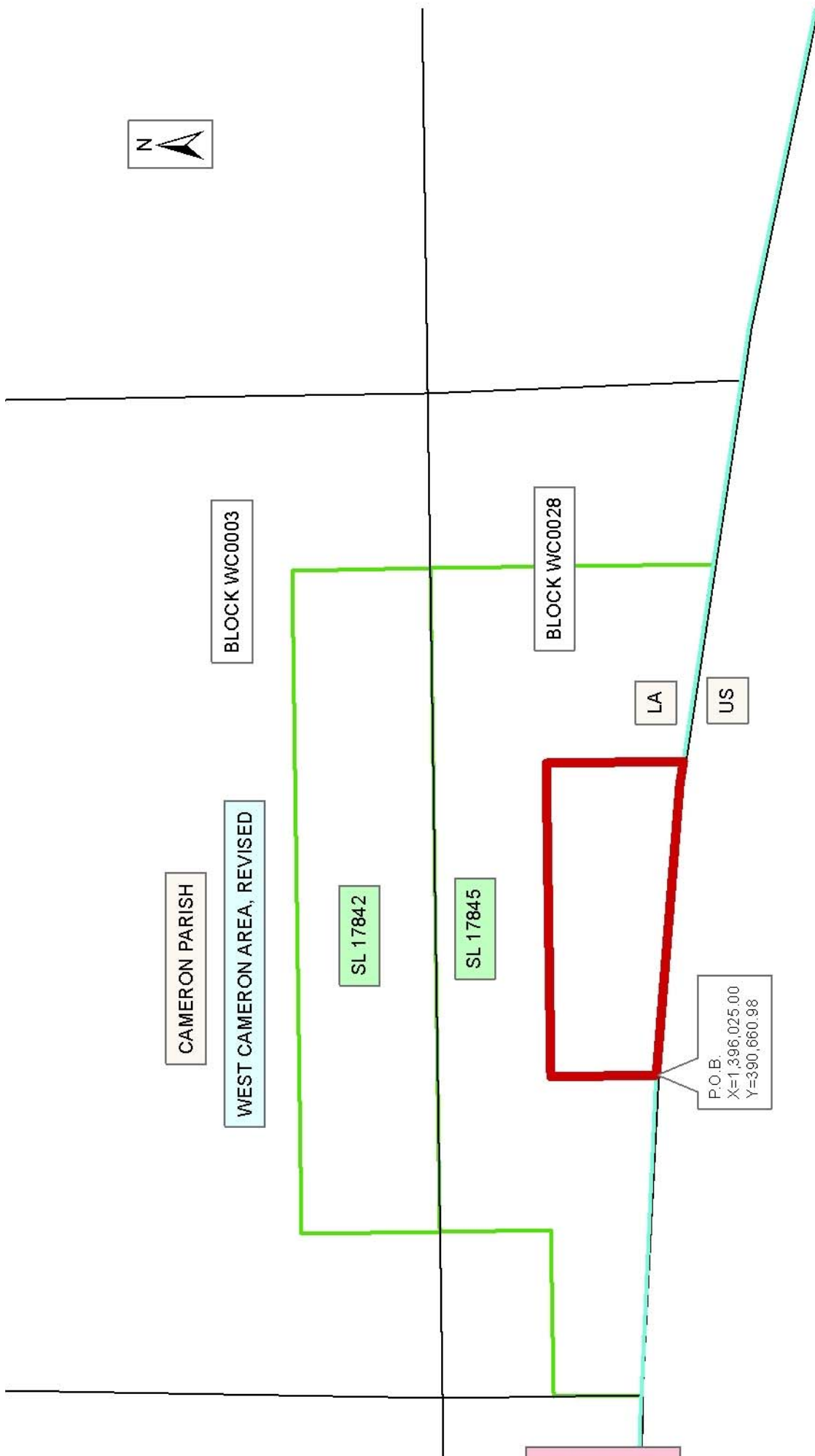
NOTE: The above description of the Tract nominated for lease has been provided and corrected, where required, exclusively by the nomination party. Any mineral lease selected from this Tract and awarded by the Louisiana State Mineral Board shall be without warranty of any kind, either express, implied, or statutory, including, but not limited to, the implied warranties of merchantability and fitness for a particular purpose. Should the mineral lease awarded by the Louisiana State Mineral Board be subsequently modified, cancelled or abrogated due to the existence of conflicting leases, operating agreements, private claims or other future obligations or conditions which may affect all or any portion of the leased Tract, it shall not relieve the Lessee of the obligation to pay any bonus due thereon to the Louisiana State Mineral Board, nor shall the Louisiana State Mineral Board be obligated to refund any consideration paid by the Lessor prior to such modification, cancellation, or abrogation, including, but not limited to, bonuses, rentals and royalties.

NOTE: The State of Louisiana does hereby reserve, and this lease shall be subject to, the imprescriptible right of surface use in the nature of a servitude in favor of the Department of Natural Resources, including its Offices and Commissions, for the sole purpose of implementing, constructing, servicing and maintaining approved coastal zone management and/or restoration projects. Utilization of any and all rights derived under this lease by the mineral lessee, its agents, successors or assigns,

shall not interfere with nor hinder the reasonable surface use by the Department of Natural Resources, its Offices or Commissions, as herein above reserved.

Applicant: Harold J. Anderson, Inc.

Bidder	Cash Payment	Price/ Acre	Rental	Oil	Gas	Other



TRACT 37268 - Portion of Blocks 32, and 33, West Cameron Area, Revised, Cameron Parish, Louisiana

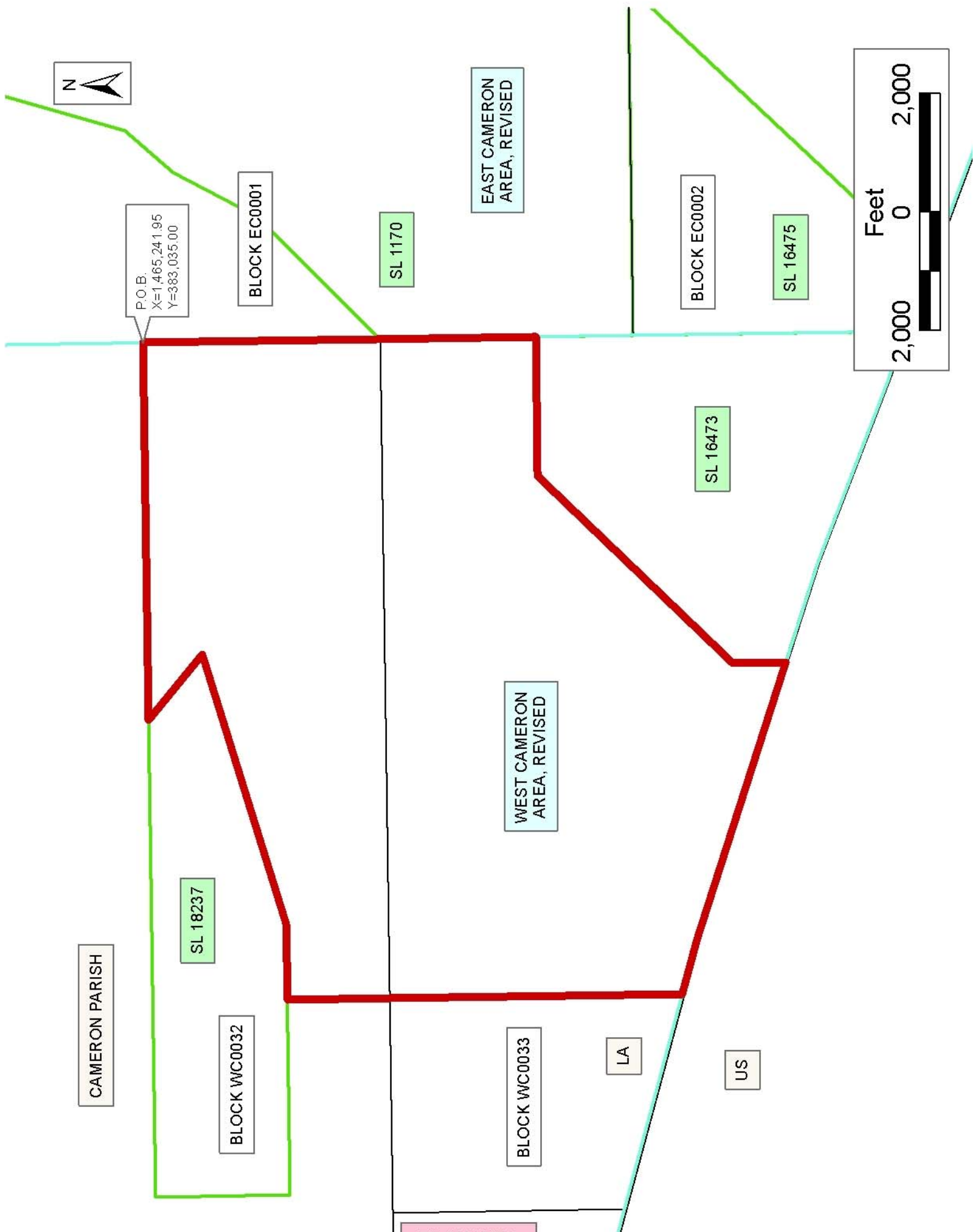
The beds and bottoms of all water bodies belonging to the State of Louisiana located in Blocks 32, and 33, West Cameron Area, Revised, together with any present lands formed by accretion to the shoreline or islands formed therein, located in Cameron Parish, Louisiana, owned by and not presently under mineral lease as of April 13, 2005, from the State of Louisiana, the geographical area of which is more fully described as follows: Beginning at a point on the East line of Block 32, West Cameron Area, Revised, having Coordinates of X = 1,465,241.95 and Y = 383,035.00; thence South 4,002.81 feet along the East line of said Block 32 to its Southeast corner, said corner also being the Northeast corner of Block 33, West Cameron Area, Revised, having Coordinates of X = 1,465,241.95 and Y = 379,032.19; thence South 2,624.14 feet along the East line of said Block 33 to the Northeast corner of State Lease No. 16473 having Coordinates of X = 1,465,241.95 and Y = 376,408.05; thence along the boundary of said State Lease No. 16473 the following courses: West 2,350.00 feet to a point having Coordinates of X = 1,462,891.95 and Y = 376,408.05; South 44 degrees 43 minutes 00 seconds West 4,561.24 feet to a point having Coordinates of X = 1,459,682.65 and Y = 373,166.86; and South 900.00 feet to its Southwest corner, said corner also being a point on the Three Mile Decree line derived from the June 16, 1975 Decree in the United States vs. Louisiana No. 9 Original, having Coordinates of X = 1,459,682.65 and Y = 372,266.86; thence Northwesterly on a straight line to a point having Coordinates of X = 1,455,041 and Y = 373,829; thence Northwesterly on a straight line to a point having Coordinates of X = 1,454,105.00 and Y = 374,093.82; thence North 4,938.37 feet to a point on the common boundary line between said Block 32 and said Block 33 having Coordinates of X = 1,454,105.00 and Y = 379,032.19; thence North 1,727.81 feet to a point on the South line State Lease No. 18237 having Coordinates of X = 1,454,105.00 and Y = 380,760.00; thence along the boundary of said State Lease No. 18237 the following courses: East 1,283.00 feet to a point having Coordinates of X = 1,455,388.00 and Y = 380,760.00; North 73 degrees 35 minutes 34 seconds East 4,772.34 feet to a point having Coordinates of X = 1,459,966.00 and Y = 382,108.00; and North 49 degrees 43 minutes 26 seconds West 1,433.93 feet to its most Northerly Northeast corner having Coordinates of X = 1,458,872.00 and Y = 383,035.00; thence East 6,369.95 feet to the point of beginning, containing approximately **2,000.70 acres, LESS AND EXCEPT** that portion thereof, if any, lying seaward of the line three nautical miles from the coast line of Louisiana, as said three mile line has been decreed by the Supreme Court of the United States, as determined by a Special Master appointed therein, in litigation styled **United States v. State of Louisiana et al No. 9 Original**, in 1975, all as more particularly outlined on a plat in the Office of Mineral Resources, Department of Natural Resources. All bearings, distances and coordinates are based on the Louisiana Coordinate System of 1927, (South Zone).

NOTE: The above description of the Tract nominated for lease has been provided and corrected, where required, exclusively by the nomination party. Any mineral lease selected from this Tract and awarded by the Louisiana State Mineral Board shall be without warranty of any kind, either express, implied, or statutory, including, but not limited to, the implied warranties of merchantability and fitness for a particular purpose. Should the mineral lease awarded by the Louisiana State Mineral Board be subsequently modified, cancelled or abrogated due to the existence of conflicting leases, operating agreements, private claims or other future obligations or conditions which may affect all or any portion of the leased Tract, it shall not relieve the Lessee of the obligation to pay any bonus due thereon to the Louisiana State Mineral Board, nor shall the Louisiana State Mineral Board be obligated to refund any consideration paid by the Lessor prior to such modification, cancellation, or abrogation, including, but not limited to, bonuses, rentals and royalties.

NOTE: The State of Louisiana does hereby reserve, and this lease shall be subject to, the imprescriptible right of surface use in the nature of a servitude in favor of the Department of Natural Resources, including its Offices and Commissions, for the sole purpose of implementing, constructing, servicing and maintaining approved coastal zone management and/or restoration projects. Utilization of any and all rights derived under this lease by the mineral lessee, its agents, successors or assigns, shall not interfere with nor hinder the reasonable surface use by the Department of Natural Resources, its Offices or Commissions, as herein above reserved.

Applicant: Merlin Exploration, Inc.

Bidder	Cash Payment	Price/ Acre	Rental	Oil	Gas	Other



TRACT 37269 - Portion of Block 10, Vermilion Area, Revised, Vermilion Parish, Louisiana

The beds and bottoms of all water bodies belonging to the State of Louisiana located in Block 10, Vermilion Area, Revised, together with any present lands formed by accretion to the shoreline or islands formed therein, located in Vermilion Parish, Louisiana, owned by and not presently under mineral lease as of April 13, 2005, from the State of Louisiana, the geographical area of which is more fully described as follows: Beginning at a point on the North line of Block 10, Vermilion Area, Revised, having Coordinates of X = 1,729,916.19 and Y = 330,540.90; thence Northeasterly on a straight line to a point having Coordinates of X = 1,730,831 and Y = 330,886; thence Northeasterly on a straight line to a point having Coordinates of X = 1,735,850 and Y = 333,066; thence Northeasterly on a straight line to the Northeast corner of said Block 10, having Coordinates of X = 1,737,042.09 and Y = 333,375.76; thence South 00 degrees, 24 minutes, 49 seconds West, 15,193.34 feet along the East line of Block 10 to its Southeast corner having Coordinates of X = 1,736,932.41 and Y = 318,182.82; thence West 7,016.22 feet to a point on the South line of said Block 10, having Coordinates of X = 1,729,916.19 and Y = 318,182.82; thence North 12,358.08 feet to the point of beginning, **LESS AND EXCEPT** that portion, if any of State Lease No. 340, as amended, that may lie within the above described tract, containing approximately **2,244.81 acres**, all as more particularly outlined on a plat on file in the Office of Mineral Resources, Department of Natural Resources. All bearings, distances and coordinates are based on Louisiana Coordinate System of 1927, (North or South Zone).

NOTE: The above description of the Tract nominated for lease has been provided and corrected, where required, exclusively by the nomination party. Any mineral lease selected from this Tract and awarded by the Louisiana State Mineral Board shall be without warranty of any kind, either express, implied, or statutory, including, but not limited to, the implied warranties of merchantability and fitness for a particular purpose. Should the mineral lease awarded by the Louisiana State Mineral Board be subsequently modified, cancelled or abrogated due to the existence of conflicting leases, operating agreements, private claims or other future obligations or conditions which may affect all or any portion of the leased Tract, it shall not relieve the Lessee of the obligation to pay any bonus due thereon to the Louisiana State Mineral Board, nor shall the Louisiana State Mineral Board be obligated to refund any consideration paid by the Lessor prior to such modification, cancellation, or abrogation, including, but not limited to, bonuses, rentals and royalties.

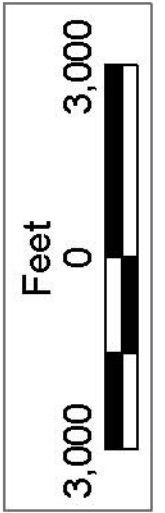
NOTE: The State of Louisiana does hereby reserve, and this lease shall be subject to, the imprescriptible right of surface use in the nature of a servitude in favor of the Department of Natural Resources, including its Offices and Commissions, for the sole purpose of implementing, constructing, servicing and maintaining approved coastal zone management and/or restoration projects. Utilization of any and all rights derived

under this lease by the mineral lessee, its agents, successors or assigns, shall not interfere with nor hinder the reasonable surface use by the Department of Natural Resources, its Offices or Commissions, as herein above reserved.

NOTE: The Department of Wildlife and Fisheries has designated certain areas in the coastal waters of the State of Louisiana as Oyster Seed Bed Areas. The exact location of those Seed Bed Areas must be obtained from the Department of Wildlife and Fisheries and any work done under a mineral lease from the State of Louisiana may necessarily be conducted in conformity with the rules and regulations promulgated by the said Department of Wildlife and Fisheries for Oyster Seed Bed Areas.

Applicant: Anchor Land & Exploration Company, LLC

Bidder	Cash Payment	Price/ Acre	Rental	Oil	Gas	Other



SL 340

BLOCK SM0292

SOUTH MARSH
ISLAND AREA

US

LA

P.O.B.
X=1,729,916.19
Y=330,540.90

VERMILION PARISH

BLOCK VR0010

VERMILION AREA, REVISED

TRACT 37270 - Portion of Block 10, Vermilion Area, Revised, Vermilion Parish, Louisiana

The beds and bottoms of all water bodies belonging to the State of Louisiana located in Blocks 10, Vermilion Area, Revised, together with any present lands formed by accretion to the shoreline or islands formed therein, located in Vermilion Parish, Louisiana, owned by and not presently under mineral lease as of April 13, 2005, from the State of Louisiana, the geographical area of which is more fully described as follows: Beginning at the Northwest corner of Block 10, Vermilion Area, Revised, having Coordinates of X = 1,721,172.41 and Y = 326,945.66; thence Northeasterly on a straight line to a point having Coordinates of X = 1,721,682 and Y = 327,214; thence Northeasterly on a straight line to a point having Coordinates of X = 1,722,884 and Y = 327,774; thence Northeasterly on a straight line to a point having Coordinates of X = 1,724,713 and Y = 328,326; thence Northeasterly on a straight line to a point having Coordinates of X = 1,726,542 and Y = 329,268; thence Northeasterly on a straight line to a point having Coordinates of X = 1,729,916.19 and Y = 330,540.90; thence South 12,357.90 feet to a point on the South line of said Block 10 having Coordinates of X = 1,729,916.19 and Y = 318,183.00; thence West 8,743.78 feet to the Southwest corner of said Block 10, having Coordinates of X = 1,721,172.41 and Y = 318,182.82; thence North 8,762.84 feet along the West line of said Block 10 to the point of beginning, containing approximately **2,128.94 acres**, all as more particularly outlined on a plat on file in the Office of Mineral Resources, Department of Natural Resources. All bearings, distances and coordinates are based on Louisiana Coordinate System of 1927, (North or South Zone).

NOTE: The above description of the Tract nominated for lease has been provided and corrected, where required, exclusively by the nomination party. Any mineral lease selected from this Tract and awarded by the Louisiana State Mineral Board shall be without warranty of any kind, either express, implied, or statutory, including, but not limited to, the implied warranties of merchantability and fitness for a particular purpose. Should the mineral lease awarded by the Louisiana State Mineral Board be subsequently modified, cancelled or abrogated due to the existence of conflicting leases, operating agreements, private claims or other future obligations or conditions which may affect all or any portion of the leased Tract, it shall not relieve the Lessee of the obligation to pay any bonus due thereon to the Louisiana State Mineral Board, nor shall the Louisiana State Mineral Board be obligated to refund any consideration paid by the Lessor prior to such modification, cancellation, or abrogation, including, but not limited to, bonuses, rentals and royalties.

NOTE: The State of Louisiana does hereby reserve, and this lease shall be subject to, the imprescriptible right of surface use in the nature of a servitude in favor of the Department of Natural Resources, including its Offices and Commissions, for the sole purpose of implementing, constructing, servicing and maintaining approved coastal zone management

and/or restoration projects. Utilization of any and all rights derived under this lease by the mineral lessee, its agents, successors or assigns, shall not interfere with nor hinder the reasonable surface use by the Department of Natural Resources, its Offices or Commissions, as herein above reserved.

NOTE: The Department of Wildlife and Fisheries has designated certain areas in the coastal waters of the State of Louisiana as Oyster Seed Bed Areas. The exact location of those Seed Bed Areas must be obtained from the Department of Wildlife and Fisheries and any work done under a mineral lease from the State of Louisiana may necessarily be conducted in conformity with the rules and regulations promulgated by the said Department of Wildlife and Fisheries for Oyster Seed Bed Areas.

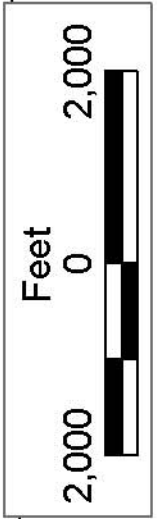
Applicant: Anchor Land & Exploration Company, LLC

Bidder	Cash Payment	Price/ Acre	Rental	Oil	Gas	Other



VERMILION AREA, REVISED

BLOCK VR0010



VERMILION PARISH

P.O.B.
X=1,721,172.41
Y=326,945.66

BLOCK VR0009

TRACT 37271 - Portion of Block 9, Vermilion Area, Revised, Vermilion Parish, Louisiana

The beds and bottoms of all water bodies belonging to the State of Louisiana located in Block 9, Vermilion Area, Revised, together with any present lands formed by accretion to the shoreline or islands formed therein, located in Vermilion Parish, Louisiana, owned by and not presently under mineral lease as of April 13, 2005, from the State of Louisiana, the geographical area of which is more fully described as follows: Beginning at a point on the North line of Block 9, Vermilion Area, Revised, also being the Northeast corner of State Lease No. 18179, having Coordinates of X = 1,716,405.00 and Y = 323,868.35; thence Northeasterly on a straight line to a point having Coordinates of X = 1,717,114 and Y = 324,303; thence Northeasterly on a straight line to a point having Coordinates of X = 1,720,140 and Y = 326,402; thence Northeasterly on a straight line to the Northeast corner of said Block 9, having Coordinates of X = 1,721,172.41 and Y = 326,945.66; thence South 9,362.84 feet to the Southeast corner of said Block 9 having Coordinates of X = 1,721,172.41 and Y = 317,582.82; thence West 8,137.41 feet along South line of said Block 9 to a point having Coordinates of X = 1,713,035.00 and Y = 317,582.82; thence North 1,997.18 feet to the Southwest corner of said State Lease No. 18179 having Coordinates of X = 1,713,035.00 and Y = 319,580.00; thence East 3,370.00 feet along the South line of said State Lease No. 18179 to its Southeast corner having Coordinates of X = 1,716,405.00 and Y = 319,580.00; thence North 4,288.35 feet to the point of beginning, containing approximately **1,015.56 acres**, all as more particularly outlined on a plat on file in the Office of Mineral Resources, Department of Natural Resources. All bearings, distances and coordinates are based on Louisiana Coordinate System of 1927, (North or South Zone).

NOTE: The above description of the Tract nominated for lease has been provided and corrected, where required, exclusively by the nomination party. Any mineral lease selected from this Tract and awarded by the Louisiana State Mineral Board shall be without warranty of any kind, either express, implied, or statutory, including, but not limited to, the implied warranties of merchantability and fitness for a particular purpose. Should the mineral lease awarded by the Louisiana State Mineral Board be subsequently modified, cancelled or abrogated due to the existence of conflicting leases, operating agreements, private claims or other future obligations or conditions which may affect all or any portion of the leased Tract, it shall not relieve the Lessee of the obligation to pay any bonus due thereon to the Louisiana State Mineral Board, nor shall the Louisiana State Mineral Board be obligated to refund any consideration paid by the Lessor prior to such modification, cancellation, or abrogation, including, but not limited to, bonuses, rentals and royalties.

NOTE: The State of Louisiana does hereby reserve, and this lease shall be subject to, the imprescriptible right of surface use in the nature of a servitude in favor of the Department of Natural Resources, including its

Offices and Commissions, for the sole purpose of implementing, constructing, servicing and maintaining approved coastal zone management and/or restoration projects. Utilization of any and all rights derived under this lease by the mineral lessee, its agents, successors or assigns, shall not interfere with nor hinder the reasonable surface use by the Department of Natural Resources, its Offices or Commissions, as herein above reserved.

NOTE: The Department of Wildlife and Fisheries has designated certain areas in the coastal waters of the State of Louisiana as Oyster Seed Bed Areas. The exact location of those Seed Bed Areas must be obtained from the Department of Wildlife and Fisheries and any work done under a mineral lease from the State of Louisiana may necessarily be conducted in conformity with the rules and regulations promulgated by the said Department of Wildlife and Fisheries for Oyster Seed Bed Areas.

Applicant: Anchor Land & Exploration Company, LLC

Bidder	Cash Payment	Price/ Acre	Rental	Oil	Gas	Other



VERMILION PARISH

BLOCK VR0010

Feet
2,000 0 2,000

BLOCK VR0012

BLOCK VR0009

VERMILION AREA, REVISED

P.O.B.
X=1,716,405.00
Y=323,868.35

SL 18197

SL 18179

SL 18180

TRACT 37272 - Portion of Block 21, South Timbalier Area, Revised, Lafourche Parish, Louisiana

The beds and bottoms of all water bodies belonging to the State of Louisiana located in Block 21, South Timbalier Area, Revised, together with any present lands formed by accretion to the shoreline or islands formed therein, located in Lafourche Parish, Louisiana, owned by and not presently under mineral lease as of April 13, 2005, from the State of Louisiana, the geographical area of which is more fully described as follows: Beginning at a point on the North line of Block 21, South Timbalier Area, Revised, having Coordinates of X = 2,337,745.62 and Y = 134,330.00, thence East 10,457.00 feet along said North line to a point having Coordinates of X = 2,348,202.62 and Y = 134,330.00; thence Southwesterly along a straight line to a point having Coordinates of X = 2,346,096 and Y = 133,534; thence Southwesterly along an arc having a radius of 18,240.60 feet and a center at X = 2,339,651.00 and Y = 150,598.00 to a point having Coordinates of X = 2,344,530 and Y = 133,022; thence Southwesterly along a straight line to a point on the North line of State Lease No. 1423, as amended, having Coordinates of X = 2,343,477.01 and Y = 132,730.00; thence along the North line of said State Lease No. 1423 the following courses: West 2,732.01 feet to a point having Coordinates of X = 2,340,745.00 and Y = 132,730.00, North 670.00 feet to a point having Coordinates of X = 2,340,745.00 and Y = 133,400.00, West 1,888.45 feet to a point having Coordinates of X = 2,338,856.55 and Y = 133,400.00, South 1,920.71 feet to a point having Coordinates of X = 2,338,856.55 and Y = 131,479.29, and West 4,244.37 feet to its Northwest corner having Coordinates of X = 2,334,612.18 and Y = 131,479.29, said point also located on the West line of said Block 21, thence North 1,608.21 feet along the West line of said Block 21 to a point having Coordinates of X = 2,334,612.18 and Y = 133,087.50; thence North 68 degrees 22 minutes 13 seconds East 3,370.79 feet to the point of beginning, containing approximately **466.43 acres, LESS AND EXCEPT** that portion thereof, if any, lying seaward of the line three nautical miles from the coast line of Louisiana, as said three mile line has been decreed by the Supreme Court of the United States, as determined by a Special Master appointed therein, in litigation styled **United States v. State of Louisiana et al No. 9 Original**, in 1975, all as more particularly outlined on a plat in the Office of Mineral Resources, Department of Natural Resources. All bearings, distances and coordinates are based on the Louisiana Coordinate System of 1927, (South Zone).

NOTE: The above description of the Tract nominated for lease has been provided and corrected, where required, exclusively by the nomination party. Any mineral lease selected from this Tract and awarded by the Louisiana State Mineral Board shall be without warranty of any kind, either express, implied, or statutory, including, but not limited to, the implied warranties of merchantability and fitness for a particular purpose. Should the mineral lease awarded by the Louisiana State Mineral Board be subsequently modified, cancelled or abrogated due to the existence of conflicting leases, operating agreements, private claims or

other future obligations or conditions which may affect all or any portion of the leased Tract, it shall not relieve the Lessee of the obligation to pay any bonus due thereon to the Louisiana State Mineral Board, nor shall the Louisiana State Mineral Board be obligated to refund any consideration paid by the Lessor prior to such modification, cancellation, or abrogation, including, but not limited to, bonuses, rentals and royalties.

NOTE: The State of Louisiana does hereby reserve, and this lease shall be subject to, the imprescriptible right of surface use in the nature of a servitude in favor of the Department of Natural Resources, including its Offices and Commissions, for the sole purpose of implementing, constructing, servicing and maintaining approved coastal zone management and/or restoration projects. Utilization of any and all rights derived under this lease by the mineral lessee, its agents, successors or assigns, shall not interfere with nor hinder the reasonable surface use by the Department of Natural Resources, its Offices or Commissions, as herein above reserved.

NOTE: It appears, according to our records, that a portion of this Tract is located within the restrictive safety fairway area as set out by the Corps of Engineers, U.S. Army and/or the restrictive anchorage area as set out by the U.S. Coast Guard.

Applicant: South Louisiana Minerals, Inc.

Bidder	Cash Payment	Price/ Acre	Rental	Oil	Gas	Other



LAFOURCHE PARISH

BAY MARCHAND AREA

BLOCK BM0005

SOUTH TIMBALIER AREA, REVISED

P.O.B.
X=2,337,745.62
Y=134,330.00

BLOCK BM0007

BLOCK ST0021

LA

US

SL 1423

BLOCK ST0020

