

TRACT 37253 - Portion of Blocks 3, and 4, West Cameron Area, Revised, Cameron Parish, Louisiana

The beds and bottoms of all water bodies belonging to the State of Louisiana located in Blocks 3, and 4, West Cameron Area, Revised, together with any present lands formed by accretion to the shoreline or islands formed therein, located in Cameron Parish, Louisiana, owned by and not presently under mineral lease as of April 13, 2005, from the State of Louisiana, the geographical area of which is more fully described as follows: Beginning at a point within Block 3, West Cameron Area, Revised, having Coordinates of X = 1,393,830.00 and Y = 401,082.74; thence West 2,378.29 feet to a point on the West line of said Block 3, also being a point on the East line of Block 4, West Cameron Area, Revised, having Coordinates of X = 1,391,451.71 and Y = 401,082.74; thence West 7,140.35 feet to a point on the East line of State Lease No. 17637 having Coordinates of X = 1,384,311.36 and Y = 401,082.74; thence North 40 degrees 53 minutes 04 seconds East 184.11 feet along the East line of said State Lease No. 17637 to its Northeast corner, also being the Southeast corner of State Lease No. 17635 having Coordinates of X = 1,384,431.86 and Y = 401,221.93; thence along said State Lease No. 17635 the following courses and distances: North 40 degrees 53 minutes 03 seconds East 4,580.58 feet and North 82 degrees 20 minutes 36 seconds West 10,225.75 feet to its Northwest corner, also being a point on the West line of said Block 4 having Coordinates of X = 1,377,295.42 and Y = 406,047.46; thence North 2,030.57 feet along the West line of said Block 4 to its Northwest corner having Coordinates of X = 1,377,295.42 and Y = 408,078.03; thence Northeasterly on a straight line to a point having Coordinates of X = 1,380,235.00 and Y = 408,500.00; thence Northeasterly on a straight line to a point having Coordinates of X = 1,383,990.00 and Y = 409,136.00; thence Northeasterly on a straight line to a point having Coordinates of X = 1,386,636.00 and Y = 409,216.00; thence Northeasterly on a straight line to the Northeast corner of said Block 4, also being the Northwest corner of said Block 3 having Coordinates of X = 1,391,451.71 and Y = 409,240.45; thence Northeasterly on a straight line to a point having Coordinates of X = 1,391,954.00 and Y = 409,243.00; thence Southeasterly on a straight line to a point having Coordinates of X = 1,392,000.00 and Y = 409,180.00; thence Southeasterly on a straight line to a point having Coordinates of X = 1,393,830.00 and Y = 409,071.32; thence South 7,988.58 feet to the point of beginning, containing approximately **2,118.15 acres**, all as more particularly outlined on a plat on file in the Office of Mineral Resources, Department of Natural Resources. All bearings, distances and coordinates are based on Louisiana Coordinate System of 1927, (North or South Zone).

NOTE: The above description of the Tract nominated for lease has been provided and corrected, where required, exclusively by the nomination party. Any mineral lease selected from this Tract and awarded by the Louisiana State Mineral Board shall be without warranty of any kind, either express, implied, or statutory, including, but not limited to, the implied warranties of merchantability and fitness for a particular

purpose. Should the mineral lease awarded by the Louisiana State Mineral Board be subsequently modified, cancelled or abrogated due to the existence of conflicting leases, operating agreements, private claims or other future obligations or conditions which may affect all or any portion of the leased Tract, it shall not relieve the Lessee of the obligation to pay any bonus due thereon to the Louisiana State Mineral Board, nor shall the Louisiana State Mineral Board be obligated to refund any consideration paid by the Lessor prior to such modification, cancellation, or abrogation, including, but not limited to, bonuses, rentals and royalties.

NOTE: The State of Louisiana does hereby reserve, and this lease shall be subject to, the imprescriptible right of surface use in the nature of a servitude in favor of the Department of Natural Resources, including its Offices and Commissions, for the sole purpose of implementing, constructing, servicing and maintaining approved coastal zone management and/or restoration projects. Utilization of any and all rights derived under this lease by the mineral lessee, its agents, successors or assigns, shall not interfere with nor hinder the reasonable surface use by the Department of Natural Resources, its Offices or Commissions, as herein above reserved.

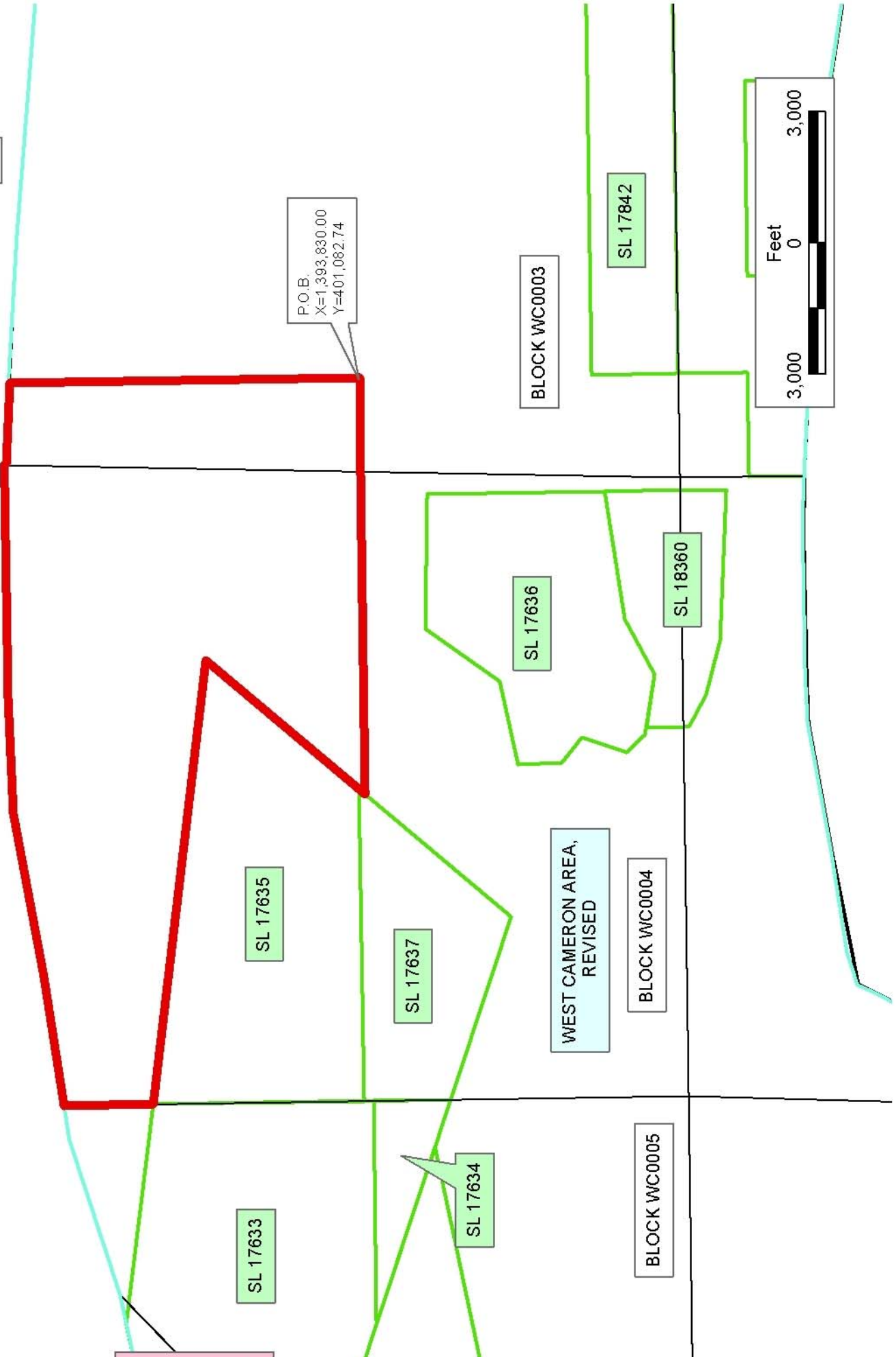
Applicant: Harold J. Anderson, Inc.

Bidder	Cash Payment	Price/Acre	Rental	Oil	Gas	Other



CAMERON PARISH

P.O.B.
X=1,393,830.00
Y=401,082.74



TRACT 37254 - Portion of Block 3, West Cameron Area, Revised, Cameron Parish, Louisiana

The beds and bottoms of all water bodies belonging to the State of Louisiana located in Block 3, West Cameron Area, Revised, together with any present lands formed by accretion to the shoreline or islands formed therein, located in Cameron Parish, Louisiana, owned by and not presently under mineral lease as of April 13, 2005, from the State of Louisiana, the geographical area of which is more fully described as follows: Beginning at a point within Block 3, West Cameron Area, Revised, having Coordinates of X = 1,393,830.00 and Y = 401,082.74; thence North 7,988.58 feet to a point having Coordinates of X = 1,393,830.00 and Y = 409,071.32; thence Southeasterly on a straight line to a point having Coordinates of X = 1,397,220.00 and Y = 408,870.00; thence Southeasterly on a straight line to a point having Coordinates of X = 1,402,525.00 and Y = 408,365.00; thence Southeasterly on a straight line to the Northeast corner of said Block 3 having Coordinates of X = 1,405,806.20 and Y = 407,818.13; thence South 6,735.39 feet along the East line of said Block 3 to the Northeast corner of State Lease No. 18424 having Coordinates of X = 1,405,806.20 and Y = 401,082.74; thence West 598.40 feet along the North line of said State Lease No. 18424 to its most Northerly Northwest corner having Coordinates of X = 1,405,207.80 and Y = 401,082.74; thence West 11,377.80 feet to the point of beginning, containing approximately **2,059.44 acres**, all as more particularly outlined on a plat on file in the Office of Mineral Resources, Department of Natural Resources. All bearings, distances and coordinates are based on Louisiana Coordinate System of 1927, (North or South Zone).

NOTE: The above description of the Tract nominated for lease has been provided and corrected, where required, exclusively by the nomination party. Any mineral lease selected from this Tract and awarded by the Louisiana State Mineral Board shall be without warranty of any kind, either express, implied, or statutory, including, but not limited to, the implied warranties of merchantability and fitness for a particular purpose. Should the mineral lease awarded by the Louisiana State Mineral Board be subsequently modified, cancelled or abrogated due to the existence of conflicting leases, operating agreements, private claims or other future obligations or conditions which may affect all or any portion of the leased Tract, it shall not relieve the Lessee of the obligation to pay any bonus due thereon to the Louisiana State Mineral Board, nor shall the Louisiana State Mineral Board be obligated to refund any consideration paid by the Lessor prior to such modification, cancellation, or abrogation, including, but not limited to, bonuses, rentals and royalties.

NOTE: The State of Louisiana does hereby reserve, and this lease shall be subject to, the imprescriptible right of surface use in the nature of a servitude in favor of the Department of Natural Resources, including its Offices and Commissions, for the sole purpose of implementing, constructing, servicing and maintaining approved coastal zone management and/or restoration projects. Utilization of any and all rights derived

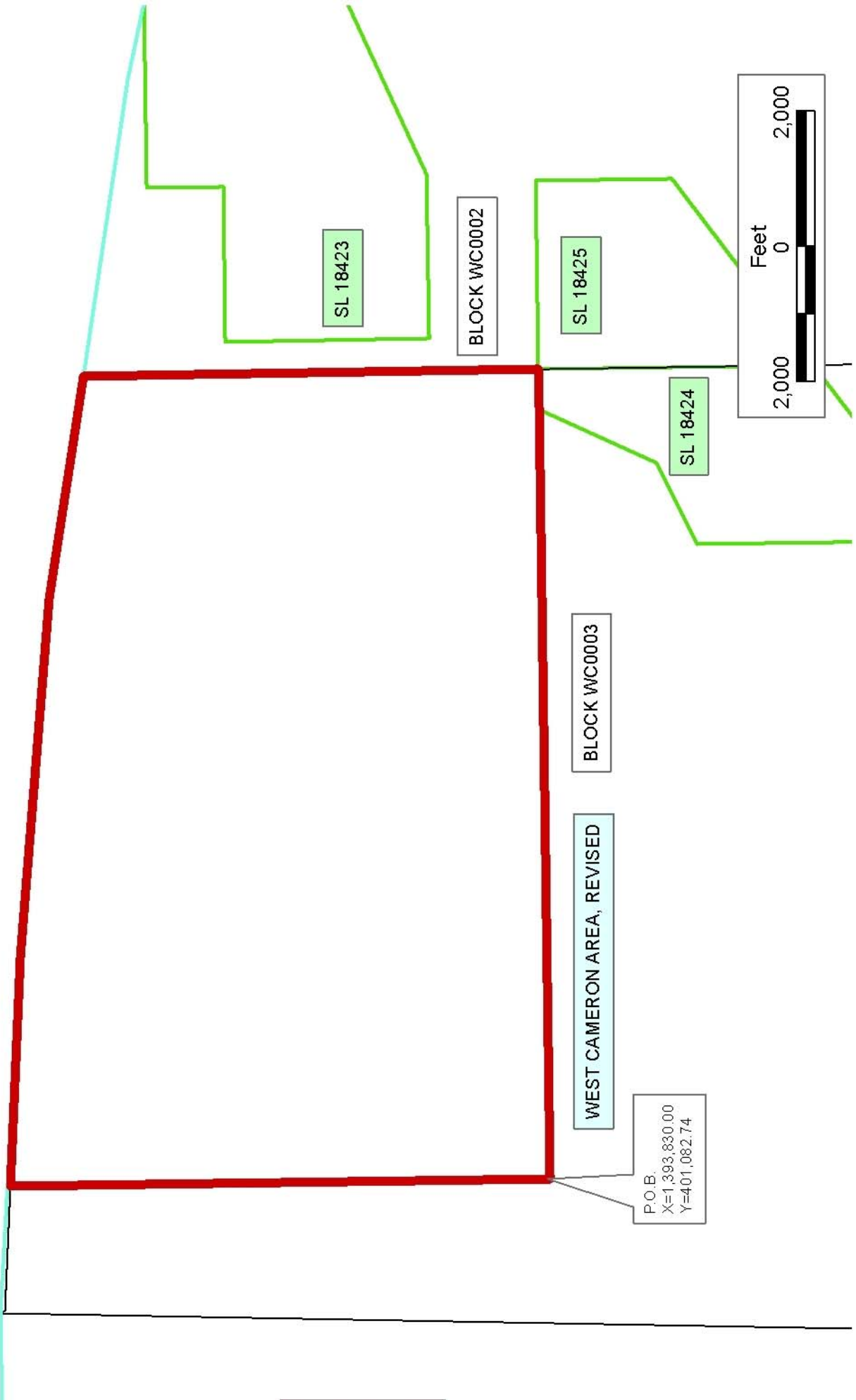
under this lease by the mineral lessee, its agents, successors or assigns, shall not interfere with nor hinder the reasonable surface use by the Department of Natural Resources, its Offices or Commissions, as herein above reserved.

Applicant: Harold J. Anderson, Inc.

Bidder	Cash Payment	Price/Acre	Rental	Oil	Gas	Other



CAMERON PARISH



TRACT 37255 - Portion of Block 2, West Cameron Area, Revised, Cameron Parish, Louisiana

The beds and bottoms of all water bodies belonging to the State of Louisiana located in Block 2, West Cameron Area, Revised, together with any present lands formed by accretion to the shoreline or islands formed therein, located in Cameron Parish, Louisiana, owned by and not presently under mineral lease as of April 13, 2005, from the State of Louisiana, the geographical area of which is more fully described as follows: Beginning at a point within Block 2, West Cameron Area, Revised, having Coordinates of X = 1,415,806.20 and Y = 401,082.74; thence West 7,207.20 feet to the Northeast corner of State Lease No. 18425 having Coordinates of X = 1,408,599.00 and Y = 401,082.74; thence West 2,792.80 feet along the North line of said State Lease No. 18425 to its Northwest corner, also being a point on the West line of said Block 2 having Coordinates of X = 1,405,806.20 and Y = 401,082.74; thence North 6,735.39 feet along the West line of said Block 2 to its Northwest corner having Coordinates of X = 1,405,806.20 and Y = 407,818.13; thence Southeasterly on a straight line to a point having Coordinates of X = 1,410,175.00 and Y = 407,090.00; thence Southeasterly on a straight line to a point on the North line of State Lease No. 18423 having Coordinates of X = 1,411,288.31 and Y = 406,840.00; thence along said State Lease No. 18423 the following courses and distances: West 2,720.31 feet, South 1,130.00 feet, West 2,288.00 feet, South 3,010.00 feet, East 2,435.00 feet, North 66 degrees 03 minutes 56 seconds East 3,118.13 feet and North 2,812.87 feet to the Northeast corner of said State Lease No. 18423 having Coordinates of X = 1,411,565.00 and Y = 406,777.87; thence Southeasterly on a straight line to a point having Coordinates of X = 1,415,806.20 and Y = 405,825.48; thence South 4,742.74 feet to the point of beginning, containing approximately **932.50 acres**, all as more particularly outlined on a plat on file in the Office of Mineral Resources, Department of Natural Resources. All bearings, distances and coordinates are based on Louisiana Coordinate System of 1927, (North or South Zone).

NOTE: The above description of the Tract nominated for lease has been provided and corrected, where required, exclusively by the nomination party. Any mineral lease selected from this Tract and awarded by the Louisiana State Mineral Board shall be without warranty of any kind, either express, implied, or statutory, including, but not limited to, the implied warranties of merchantability and fitness for a particular purpose. Should the mineral lease awarded by the Louisiana State Mineral Board be subsequently modified, cancelled or abrogated due to the existence of conflicting leases, operating agreements, private claims or other future obligations or conditions which may affect all or any portion of the leased Tract, it shall not relieve the Lessee of the obligation to pay any bonus due thereon to the Louisiana State Mineral Board, nor shall the Louisiana State Mineral Board be obligated to refund any consideration paid by the Lessor prior to such modification, cancellation, or abrogation, including, but not limited to, bonuses, rentals and royalties.

NOTE: The State of Louisiana does hereby reserve, and this lease shall be subject to, the imprescriptible right of surface use in the nature of a servitude in favor of the Department of Natural Resources, including its Offices and Commissions, for the sole purpose of implementing, constructing, servicing and maintaining approved coastal zone management and/or restoration projects. Utilization of any and all rights derived under this lease by the mineral lessee, its agents, successors or assigns, shall not interfere with nor hinder the reasonable surface use by the Department of Natural Resources, its Offices or Commissions, as herein above reserved.

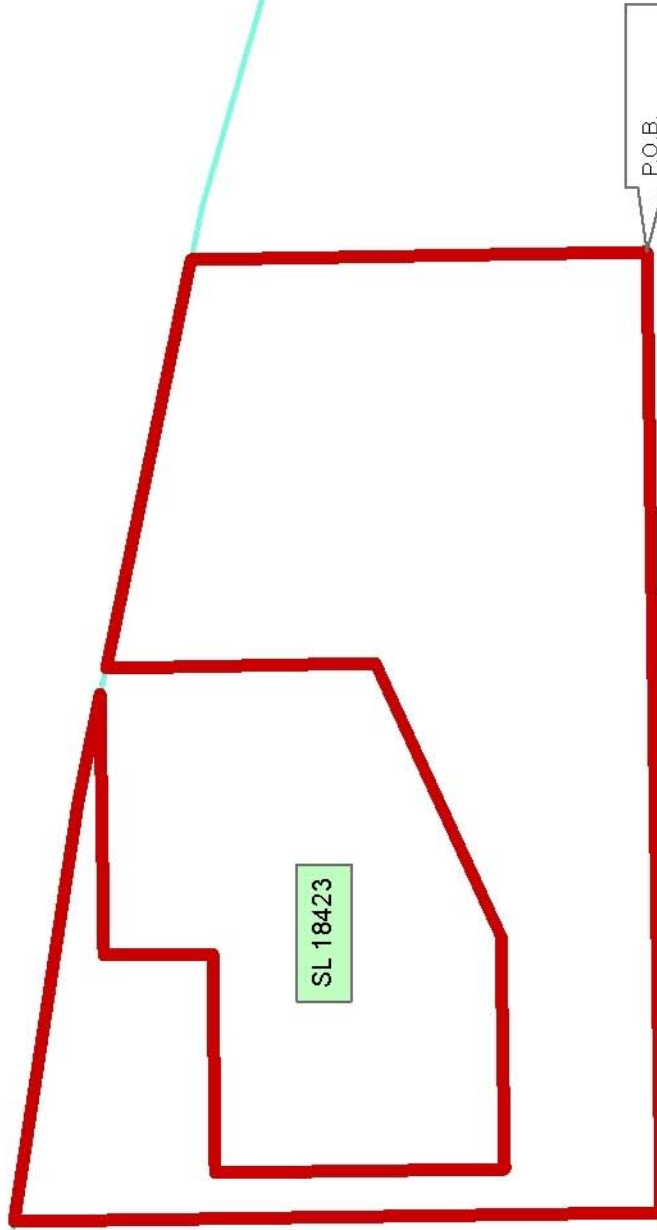
Applicant: Harold J. Anderson, Inc.

Bidder	Cash Payment	Price/Acre	Rental	Oil	Gas	Other



CAMERON PARISH

T15S - R8W



P.O.B.
X=1,415,806.20
Y=401,082.74

WEST CAMERON AREA, REVISED

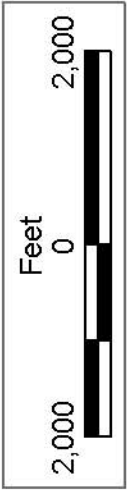
BLOCK WC0002

SL 18423

BLOCK WC0003

SL 18425

SL 18424



TRACT 37256 - Portion of Block 7, West Cameron Area, Revised, Cameron Parish, Louisiana

The beds and bottoms of all water bodies belonging to the State of Louisiana located in Block 7, West Cameron Area, Revised, together with any present lands formed by accretion to the shoreline or islands formed therein, located in Cameron Parish, Louisiana, owned by and not presently under mineral lease as of April 13, 2005, from the State of Louisiana, the geographical area of which is more fully described as follows: Beginning at a point on the East line of Block 7, West Cameron Area, Revised, having Coordinates of X = 1,347,177.57 and Y = 401,145.12; thence West 14,758.05 feet to a point on the West line of said Block 7 having Coordinates of X = 1,332,419.52 and Y = 401,145.12; thence North 5,802.72 feet along the West line of said Block 7 to its Northwest corner, said corner also being a point on the Coastline as per the Supreme Court Decree dated June 16, 1975, having Coordinates of X = 1,332,419.52 and Y = 406,947.84; thence: Southeasterly on a straight to a point having Coordinates of X = 1,333,745 and Y = 406,888; Southeasterly on a straight line to a point having Coordinates of X = 1,341,917 and Y = 405,967; and thence Southeasterly on a straight line to the Northeast corner of said Block 7 having Coordinates of X = 1,347,177.57 and Y = 405,200.53; thence South 4,055.41 feet along the East line of said Block 7 to the point of beginning, containing approximately **1,702.69 acres**, all as more particularly outlined on a plat on file in the Office of Mineral Resources, Department of Natural Resources. All bearings, distances and coordinates are based on Louisiana Coordinate System of 1927, (North or South Zone).

NOTE: The above description of the Tract nominated for lease has been provided and corrected, where required, exclusively by the nomination party. Any mineral lease selected from this Tract and awarded by the Louisiana State Mineral Board shall be without warranty of any kind, either express, implied, or statutory, including, but not limited to, the implied warranties of merchantability and fitness for a particular purpose. Should the mineral lease awarded by the Louisiana State Mineral Board be subsequently modified, cancelled or abrogated due to the existence of conflicting leases, operating agreements, private claims or other future obligations or conditions which may affect all or any portion of the leased Tract, it shall not relieve the Lessee of the obligation to pay any bonus due thereon to the Louisiana State Mineral Board, nor shall the Louisiana State Mineral Board be obligated to refund any consideration paid by the Lessor prior to such modification, cancellation, or abrogation, including, but not limited to, bonuses, rentals and royalties.

NOTE: The State of Louisiana does hereby reserve, and this lease shall be subject to, the imprescriptible right of surface use in the nature of a servitude in favor of the Department of Natural Resources, including its Offices and Commissions, for the sole purpose of implementing, constructing, servicing and maintaining approved coastal zone management and/or restoration projects. Utilization of any and all rights derived under this lease by the mineral lessee, its agents, successors or assigns,

shall not interfere with nor hinder the reasonable surface use by the Department of Natural Resources, its Offices or Commissions, as herein above reserved.

Applicant: Merlin Exploration, Inc.

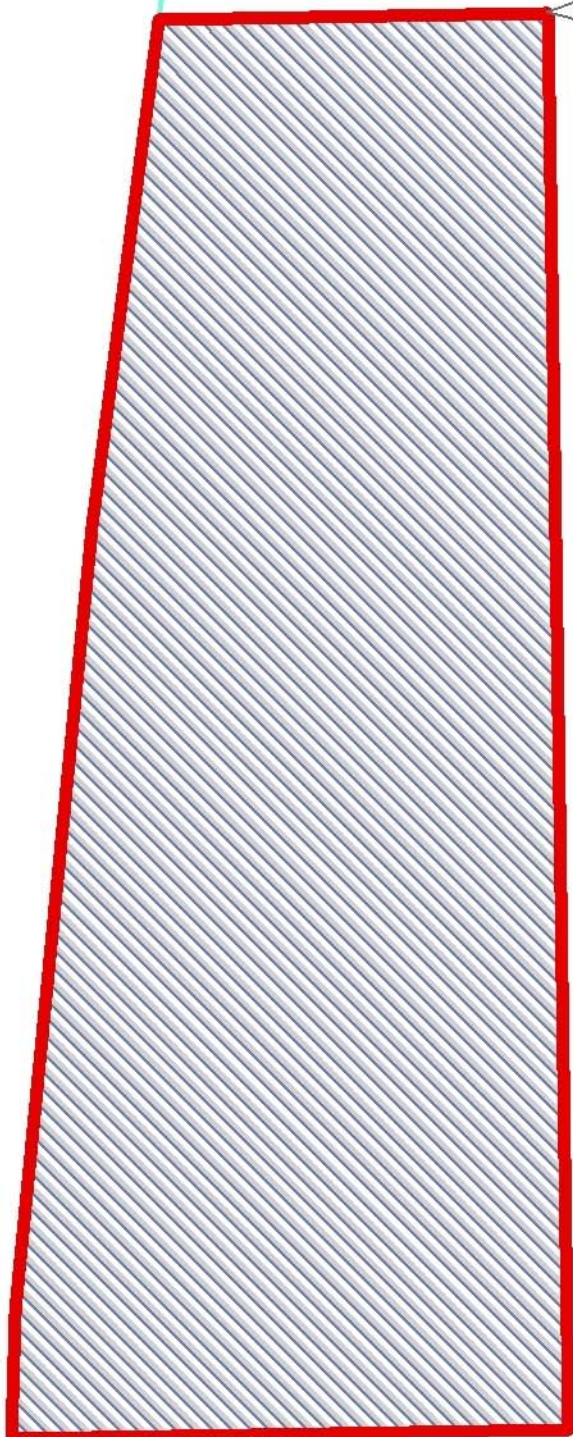
Bidder	Cash Payment	Price/Acre	Rental	Oil	Gas	Other



CAMERON PARISH

T15S - R10W

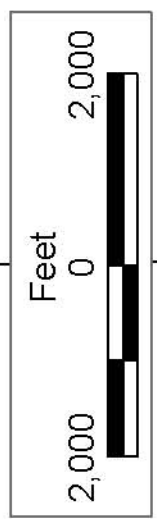
T15S - R11W



P.O.B:
X=1,347,177.57
Y=401,145.12

WEST CAMERON AREA, REVISED

BLOCK WC0007



TRACT 37257 - Portion of Block 6, West Cameron Area, Revised, Cameron Parish, Louisiana

The beds and bottoms of all water bodies belonging to the State of Louisiana located in Block 6, West Cameron Area, Revised, together with any present lands formed by accretion to the shoreline or islands formed therein, located in Cameron Parish, Louisiana, owned by and not presently under mineral lease as of April 13, 2005, from the State of Louisiana, the geographical area of which is more fully described as follows: Beginning at a point on the West line of Block 6, West Cameron Area, Revised, having Coordinates of X = 1,347,177.57 and Y = 401,145.12; thence North 4,055.41 feet along the West line of said Block 6 to its Northwest corner, said corner also being a point on the Coastline as per the Supreme Court Decree dated June 16, 1975, corner having Coordinates of X = 1,347,177.57 and Y = 405,200.53; thence: Southeasterly on a straight line to a point having Coordinates of X = 1,351,162 and Y = 404,620; Southeasterly on a straight line to a point having Coordinates of X = 1,354,310 and Y = 403,875; and Southeasterly on a straight line to the most Northerly Northwest corner of State Lease No. 18359 having Coordinates of X = 1,357,383.97 and Y = 403,283.75; thence along the boundary of said State Lease No. 18359 the following courses: South 25 degrees 22 minutes 33 seconds West 1,698.88 feet to a point having Coordinates of X = 1,356,655.91 and Y = 401,748.79 and South 49 degrees 08 minutes 06 seconds East 922.65 feet to a point having Coordinates of X = 1,357,353.66 and Y = 401,145.12; thence West 10,176.09 feet to the point of beginning, containing approximately **722.30 acres**, all as more particularly outlined on a plat on file in the Office of Mineral Resources, Department of Natural Resources. All bearings, distances and coordinates are based on Louisiana Coordinate System of 1927, (North or South Zone).

NOTE: The above description of the Tract nominated for lease has been provided and corrected, where required, exclusively by the nomination party. Any mineral lease selected from this Tract and awarded by the Louisiana State Mineral Board shall be without warranty of any kind, either express, implied, or statutory, including, but not limited to, the implied warranties of merchantability and fitness for a particular purpose. Should the mineral lease awarded by the Louisiana State Mineral Board be subsequently modified, cancelled or abrogated due to the existence of conflicting leases, operating agreements, private claims or other future obligations or conditions which may affect all or any portion of the leased Tract, it shall not relieve the Lessee of the obligation to pay any bonus due thereon to the Louisiana State Mineral Board, nor shall the Louisiana State Mineral Board be obligated to refund any consideration paid by the Lessor prior to such modification, cancellation, or abrogation, including, but not limited to, bonuses, rentals and royalties.

NOTE: The State of Louisiana does hereby reserve, and this lease shall be subject to, the imprescriptible right of surface use in the nature of a servitude in favor of the Department of Natural Resources, including its Offices and Commissions, for the sole purpose of implementing,

constructing, servicing and maintaining approved coastal zone management and/or restoration projects. Utilization of any and all rights derived under this lease by the mineral lessee, its agents, successors or assigns, shall not interfere with nor hinder the reasonable surface use by the Department of Natural Resources, its Offices or Commissions, as herein above reserved.

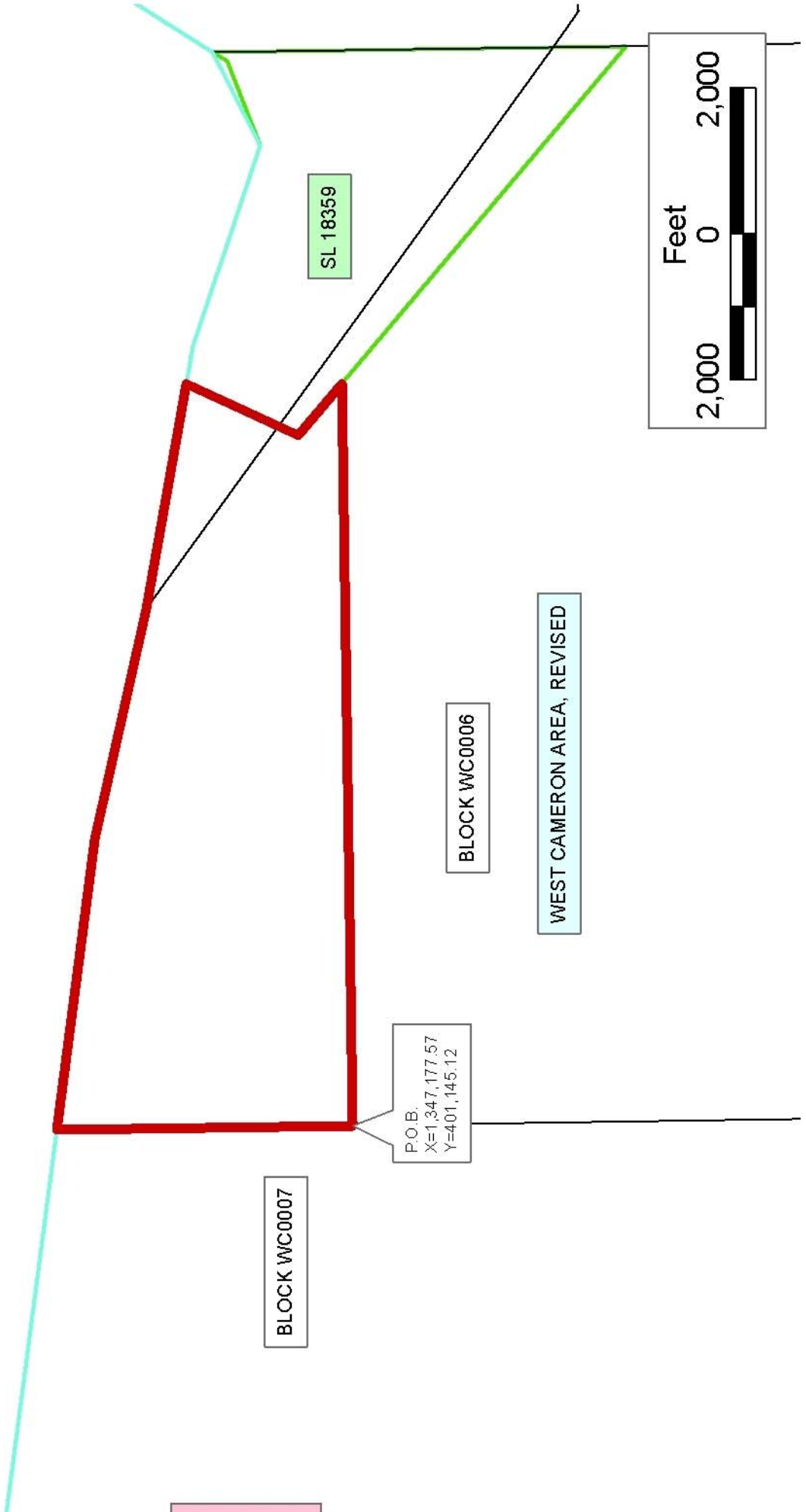
NOTE: It appears, according to our records, that a portion of this Tract is located within the restrictive safety fairway area as set out by the Corps of Engineers, U.S. Army and/or the restrictive anchorage area as set out by the U.S. Coast Guard.

Applicant: Merlin Exploration, Inc.

Bidder	Cash Payment	Price/Acre	Rental	Oil	Gas	Other



CAMERON PARISH



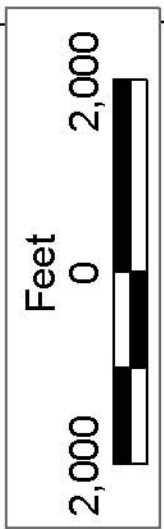
P.O.B.
X=1,347,177.57
Y=401,145.12

BLOCK WC0007

BLOCK WC0006

WEST CAMERON AREA, REVISED

SL 18359



TRACT 37258 - Portion of Block 3, West Cameron Area, Revised, Cameron Parish, Louisiana

The beds and bottoms of all water bodies belonging to the State of Louisiana located in Block 3, West Cameron Area, Revised, together with any present lands formed by accretion to the shoreline or islands formed therein, located in Cameron Parish, Louisiana, owned by and not presently under mineral lease as of April 13, 2005, from the State of Louisiana, the geographical area of which is more fully described as follows: Beginning at a point within Block 3, West Cameron Area, Revised, having Coordinates of X = 1,393,830.00 and Y = 401,082.74; thence East 11,377.80 feet to the most north Northwest corner of State Lease No. 18424 having Coordinates of X = 1,405,207.80 and Y = 401,082.74; thence along the boundary of said State Lease No. 18424 the following courses and distances: South 25 degrees 17 minutes 59 seconds West 1,906.61 feet, South 64 degrees 07 minutes 11 seconds West 1,347.10 feet and South 3,006.00 feet to its Southwest corner, also being a point on the North line of State Lease No. 17842 having Coordinates of X = 1,403,181.00 and Y = 395,765.00; thence West 9,351.00 feet along the North line of said State Lease No. 17842 to its Northwest corner having Coordinates of X = 1,393,830.00 and Y = 395,765.00; thence North 5,317.74 feet to the point of beginning, containing approximately **1,213.82 acres**, all as more particularly outlined on a plat on file in the Office of Mineral Resources, Department of Natural Resources. All bearings, distances and coordinates are based on Louisiana Coordinate System of 1927, (North or South Zone).

NOTE: The above description of the Tract nominated for lease has been provided and corrected, where required, exclusively by the nomination party. Any mineral lease selected from this Tract and awarded by the Louisiana State Mineral Board shall be without warranty of any kind, either express, implied, or statutory, including, but not limited to, the implied warranties of merchantability and fitness for a particular purpose. Should the mineral lease awarded by the Louisiana State Mineral Board be subsequently modified, cancelled or abrogated due to the existence of conflicting leases, operating agreements, private claims or other future obligations or conditions which may affect all or any portion of the leased Tract, it shall not relieve the Lessee of the obligation to pay any bonus due thereon to the Louisiana State Mineral Board, nor shall the Louisiana State Mineral Board be obligated to refund any consideration paid by the Lessor prior to such modification, cancellation, or abrogation, including, but not limited to, bonuses, rentals and royalties.

NOTE: The State of Louisiana does hereby reserve, and this lease shall be subject to, the imprescriptible right of surface use in the nature of a servitude in favor of the Department of Natural Resources, including its Offices and Commissions, for the sole purpose of implementing, constructing, servicing and maintaining approved coastal zone management and/or restoration projects. Utilization of any and all rights derived under this lease by the mineral lessee, its agents, successors or assigns, shall not interfere with nor hinder the reasonable surface use by the

Department of Natural Resources, its Offices or Commissions, as herein above reserved.

Applicant: Harold J. Anderson, Inc.

Bidder	Cash Payment	Price/Acre	Rental	Oil	Gas	Other



CAMERON PARISH

WEST CAMERON AREA, REVISED

BLOCK WC0003

P.O.B.
X=1,393,830.00
Y=401,082.74

SL 18425

BLOCK
WC0002

SL 18424

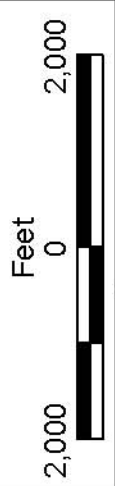
SL 17842

BLOCK WC0028

SL 17845

LA

US



TRACT 37259 - Portion of Blocks 2, 28, and 3, West Cameron Area, Revised, Cameron Parish, Louisiana

The beds and bottoms of all water bodies belonging to the State of Louisiana located in Blocks 2, 28, and 3, West Cameron Area, Revised, together with any present lands formed by accretion to the shoreline or islands formed therein, located in Cameron Parish, Louisiana, owned by and not presently under mineral lease as of April 13, 2005, from the State of Louisiana, the geographical area of which is more fully described as follows: Beginning at a point within Block 2, West Cameron Area, Revised, having Coordinates of X = 1,415,806.20 and Y = 401,082.74; thence South 7,292.50 feet to a point on the South line of said Block 2 having Coordinates of X = 1,415,806.20 and Y = 393,790.24; thence West 9,596.44 feet along the South line of said Block 2 to the Northeast corner of Block 28, West Cameron Area, Revised, having Coordinates of X = 1,406,209.76 and Y = 393,790.24; thence South 4,531.71 feet along the East line of said Block 28 to a point having Coordinates of X = 1,406,209.76 and Y = 389,258.53; thence Northwesterly on a straight line to the Southeast corner of State Lease No. 17845 having Coordinates of X = 1,403,310.00 and Y = 389,741.75; thence North 4,048.49 feet along the East line of said State Lease No. 17845 to its Northeast corner, and a point on the North line of said Block 28, a point on the South line of Block 3, West Cameron Area, Revised, also being the Southeast corner of State Lease No. 17842 having Coordinates of X = 1,403,310.00 and Y = 393,790.24; thence North 1,974.76 feet along the East line of said State Lease No. 17842 to its Northeast corner, also being a point on the South line of State Lease No. 18424 having Coordinates of X = 1,403,310.00 and Y = 395,765.00; thence along said State Lease No. 18424 the following courses and distances: East 795.28 feet and North 53 degrees 38 minutes 30 seconds East 2,112.09 feet to its Southeast corner and a point on the East line of said Block 3, a point on the West line of said Block 2, also being the Southwest corner of State Lease No. 18425 having Coordinates of X = 1,405,806.20 and Y = 397,017.11; thence along the boundary of said State Lease No. 18425 the following courses and distances: North 53 degrees 38 minutes 30 seconds East 3,467.91 feet and North 2,009.74 feet to its Northeast corner having Coordinates of X = 1,408,599.00 and Y = 401,082.74; thence East 7,207.20 feet to the point of beginning, containing approximately **1,902.57 acres, LESS AND EXCEPT** that portion thereof, if any, lying seaward of the line three nautical miles from the coast line of Louisiana, as said three mile line has been decreed by the Supreme Court of the United States, as determined by a Special Master appointed therein, in litigation styled **United States v. State of Louisiana et al No. 9 Original**, in 1975, all as more particularly outlined on a plat in the Office of Mineral Resources, Department of Natural Resources. All bearings, distances and coordinates are based on the Louisiana Coordinate System of 1927, (South Zone).

NOTE: The above description of the Tract nominated for lease has been provided and corrected, where required, exclusively by the nomination party. Any mineral lease selected from this Tract and awarded by the Louisiana State Mineral Board shall be without warranty of any kind,

either express, implied, or statutory, including, but not limited to, the implied warranties of merchantability and fitness for a particular purpose. Should the mineral lease awarded by the Louisiana State Mineral Board be subsequently modified, cancelled or abrogated due to the existence of conflicting leases, operating agreements, private claims or other future obligations or conditions which may affect all or any portion of the leased Tract, it shall not relieve the Lessee of the obligation to pay any bonus due thereon to the Louisiana State Mineral Board, nor shall the Louisiana State Mineral Board be obligated to refund any consideration paid by the Lessor prior to such modification, cancellation, or abrogation, including, but not limited to, bonuses, rentals and royalties.

NOTE: The State of Louisiana does hereby reserve, and this lease shall be subject to, the imprescriptible right of surface use in the nature of a servitude in favor of the Department of Natural Resources, including its Offices and Commissions, for the sole purpose of implementing, constructing, servicing and maintaining approved coastal zone management and/or restoration projects. Utilization of any and all rights derived under this lease by the mineral lessee, its agents, successors or assigns, shall not interfere with nor hinder the reasonable surface use by the Department of Natural Resources, its Offices or Commissions, as herein above reserved.

Applicant: Harold J. Anderson, Inc.

Bidder	Cash Payment	Price/Acre	Rental	Oil	Gas	Other



P.O.B.
X=1,415,806.20
Y=401,082.74

CAMERON PARISH

SL 18423

SL 18425

SL 18424

BLOCK WC0003

SL 17842

SL 17845

BLOCK WC0028

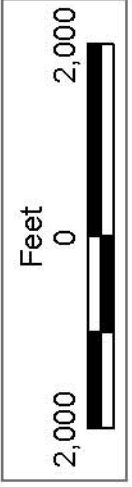
BLOCK WC0002

BLOCK WC0029

WEST CAMERON AREA, REVISED

LA

US



TRACT 37260 - Portion of Block 7, West Cameron Area, Revised, Cameron Parish, Louisiana

The beds and bottoms of all water bodies belonging to the State of Louisiana located in Block 7, West Cameron Area, Revised, together with any present lands formed by accretion to the shoreline or islands formed therein, located in Cameron Parish, Louisiana, owned by and not presently under mineral lease as of April 13, 2005, from the State of Louisiana, the geographical area of which is more fully described as follows: Beginning at the Southeast corner of Block 7, West Cameron Area, Revised, having Coordinates of X = 1,347,177.57 and Y = 393,790.24; thence West 14,758.05 feet along the South line of said Block 7 to its Southwest corner having Coordinates of X = 1,332,419.52 and Y = 393,790.24; thence North 7,354.88 feet along the West line of said Block 7 to a point having Coordinates of X = 1,332,419.52 and Y = 401,145.12; thence East 14,758.05 feet to a point on the East line of said Block 7 having Coordinates of X = 1,347,177.57 and Y = 401,145.12; thence South 7,354.88 feet along the East line of said Block 7 to the point of beginning, containing approximately **2,491.82 acres**, all as more particularly outlined on a plat on file in the Office of Mineral Resources, Department of Natural Resources. All bearings, distances and coordinates are based on Louisiana Coordinate System of 1927, (North or South Zone).

NOTE: The above description of the Tract nominated for lease has been provided and corrected, where required, exclusively by the nomination party. Any mineral lease selected from this Tract and awarded by the Louisiana State Mineral Board shall be without warranty of any kind, either express, implied, or statutory, including, but not limited to, the implied warranties of merchantability and fitness for a particular purpose. Should the mineral lease awarded by the Louisiana State Mineral Board be subsequently modified, cancelled or abrogated due to the existence of conflicting leases, operating agreements, private claims or other future obligations or conditions which may affect all or any portion of the leased Tract, it shall not relieve the Lessee of the obligation to pay any bonus due thereon to the Louisiana State Mineral Board, nor shall the Louisiana State Mineral Board be obligated to refund any consideration paid by the Lessor prior to such modification, cancellation, or abrogation, including, but not limited to, bonuses, rentals and royalties.

NOTE: The State of Louisiana does hereby reserve, and this lease shall be subject to, the imprescriptible right of surface use in the nature of a servitude in favor of the Department of Natural Resources, including its Offices and Commissions, for the sole purpose of implementing, constructing, servicing and maintaining approved coastal zone management and/or restoration projects. Utilization of any and all rights derived under this lease by the mineral lessee, its agents, successors or assigns, shall not interfere with nor hinder the reasonable surface use by the Department of Natural Resources, its Offices or Commissions, as herein above reserved.

Applicant: Merlin Exploration, Inc.

Bidder	Cash Payment	Price/Acre	Rental	Oil	Gas	Other



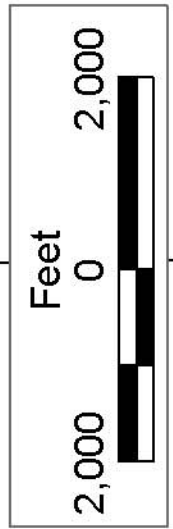
CAMERON PARISH

WEST CAMERON AREA, REVISED

BLOCK WC0007

BLOCK WC0024

P.O.B.
X=1,347,177.57
Y=393,790.24



TRACT 37261 - Portion of Block 6, West Cameron Area, Revised, Cameron Parish, Louisiana

The beds and bottoms of all water bodies belonging to the State of Louisiana located in Block 6, West Cameron Area, Revised, together with any present lands formed by accretion to the shoreline or islands formed therein, located in Cameron Parish, Louisiana, owned by and not presently under mineral lease as of April 13, 2005, from the State of Louisiana, the geographical area of which is more fully described as follows: Beginning at the Southwest corner of Block 6, West Cameron Area, Revised, having Coordinates of X = 1,347,177.57 and Y = 393,790.24; thence North 7,354.88 feet along the West line of said Block 6 to a point having Coordinates of X = 1,347,177.57 and Y = 401,145.12; thence East 10,176.09 feet to a point on the Westerly boundary of State Lease No. 18359 having Coordinates of X = 1,357,353.66 and Y = 401,145.12; thence South 49 degrees 08 minutes 06 seconds East 6,058.76 feet along the Western boundary of said State Lease No. 18359 to its South corner, said corner also being a point on the East line of said Block 6, having Coordinates of X = 1,361,935.62 and Y = 397,181.00; thence South 3,390.76 feet along the East line of said Block 6 to its Southeast corner having Coordinates of X = 1,361,935.62 and Y = 393,790.24; thence West 14,758.05 feet along the South line of said Block 6 to the point of beginning, containing approximately **2,283.33 acres**, all as more particularly outlined on a plat on file in the Office of Mineral Resources, Department of Natural Resources. All bearings, distances and coordinates are based on Louisiana Coordinate System of 1927, (North or South Zone).

NOTE: The above description of the Tract nominated for lease has been provided and corrected, where required, exclusively by the nomination party. Any mineral lease selected from this Tract and awarded by the Louisiana State Mineral Board shall be without warranty of any kind, either express, implied, or statutory, including, but not limited to, the implied warranties of merchantability and fitness for a particular purpose. Should the mineral lease awarded by the Louisiana State Mineral Board be subsequently modified, cancelled or abrogated due to the existence of conflicting leases, operating agreements, private claims or other future obligations or conditions which may affect all or any portion of the leased Tract, it shall not relieve the Lessee of the obligation to pay any bonus due thereon to the Louisiana State Mineral Board, nor shall the Louisiana State Mineral Board be obligated to refund any consideration paid by the Lessor prior to such modification, cancellation, or abrogation, including, but not limited to, bonuses, rentals and royalties.

NOTE: The State of Louisiana does hereby reserve, and this lease shall be subject to, the imprescriptible right of surface use in the nature of a servitude in favor of the Department of Natural Resources, including its Offices and Commissions, for the sole purpose of implementing, constructing, servicing and maintaining approved coastal zone management and/or restoration projects. Utilization of any and all rights derived under this lease by the mineral lessee, its agents, successors or assigns,

shall not interfere with nor hinder the reasonable surface use by the Department of Natural Resources, its Offices or Commissions, as herein above reserved.

NOTE: It appears, according to our records, that a portion of this Tract is located within the restrictive safety fairway area as set out by the Corps of Engineers, U.S. Army and/or the restrictive anchorage area as set out by the U.S. Coast Guard.

Applicant: Merlin Exploration, Inc.

Bidder	Cash Payment	Price/Acre	Rental	Oil	Gas	Other



SL 18358

SL 18359

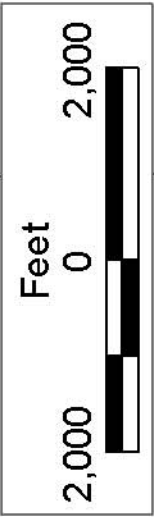
CAMERON PARISH

BLOCK WC0006

WEST CAMERON AREA, REVISED

BLOCK WC0025

P.O.B.
X=1,347,177.57
Y=393,790.24



TRACT 37262 - Portion of Blocks 28, 3, and 4, West Cameron Area, Revised, Cameron Parish, Louisiana

The beds and bottoms of all water bodies belonging to the State of Louisiana located in Blocks 28, 3, and 4, West Cameron Area, Revised, together with any present lands formed by accretion to the shoreline or islands formed therein, located in Cameron Parish, Louisiana, owned by and not presently under mineral lease as of April 13, 2005, from the State of Louisiana, the geographical area of which is more fully described as follows: Beginning at a point within Block 3, West Cameron Area, Revised, having Coordinates of X = 1,393,830.00 and Y = 401,082.74; thence South 5,317.74 feet to the Northwest corner of State Lease No. 17842 having Coordinates of X = 1,393,830.00 and Y = 395,765.00; thence South 1,974.76 feet along the West line of said State Lease No. 17842 to its Southwest corner, and a point on the South line of said Block 3, also being a point on the North line of Block 28, West Cameron Area, Revised, also being a corner of State Lease No. 17845 having Coordinates of X = 1,393,830.00 and Y = 393,790.24; thence South 1,590.24 feet to a point having Coordinates of X = 1,393,830.00 and Y = 392,200.00; thence West 2,378.29 feet to a point on the West line of said Block 28 having Coordinates of X = 1,391,451.71 and Y = 392,200.00; thence North 1,590.24 feet along the West line of said Block 28 to its Northwest corner, also being the Southeast corner of Block 4, West Cameron Area, Revised having Coordinates of X = 1,391,451.71 and Y = 393,790.24; thence West 290.71 feet along the South line of said Block 4 to a point on the East line of State Lease No. 18360 having Coordinates of X = 1,391,161.00 and Y = 393,790.24; thence North 1,710.56 feet along the East line of said State Lease No. 18360 to its Northeast corner, also being the Southeast corner of State Lease No. 17636 having Coordinates of X = 1,391,161.00 and Y = 395,500.80; thence along the boundary of said State Lease No. 17636 the following courses and distances: North 4,065.01 feet, North 88 degrees 12 minutes 15 seconds West 3,088.52 feet, South 35 degrees 40 minutes 29 seconds West 2,088.53 feet, South 78 degrees 27 minutes 14 seconds West 1,951.49 feet, South 01 degrees 12 minutes 10 seconds East 1,000.52 feet, South 51 degrees 08 minutes 58 seconds East 726.77 feet, South 18 degrees 46 minutes 55 seconds West 1,080.85 feet, South 41 degrees 53 minutes 28 seconds East 584.08 feet and South 80 degrees 17 minutes 04 seconds East 184.65 feet to a point on the South line of said State Lease No. 17636, also being the Northwest corner of said State Lease No. 18360 having Coordinates of X = 1,385,755.00 and Y = 394,629.94; thence South 839.70 feet along the West line of said State Lease No. 18360 to a point on the South line of said Block 4 having Coordinates of X = 1,385,755.00 and Y = 393,790.24; thence West 8,459.58 feet along the South line of said Block 4 to its Southwest corner having Coordinates of X = 1,377,295.42 and Y = 393,790.24; thence North 5,445.25 feet along the West line of said Block 4 to the Southwest corner of State Lease No. 17637 having Coordinates of X = 1,377,295.42 and Y = 399,235.49; thence along the boundary of said State Lease No. 17637 the following courses and distances: South 70 degrees 56 minutes 28 seconds East 4,411.40 feet and North 40 degrees 53 minutes 04 seconds East 4,348.68 feet to a point on the East line of said State Lease No. 17637

having Coordinates of X = 1,384,311.36 and Y = 401,082.74; thence East 7,140.35 feet to a point on the East line of said Block 4, also being a point on the West line of said Block 3 having Coordinates of X = 1,391,451.71 and Y = 401,082.74; thence East 2,378.29 feet to the point of beginning, containing approximately **1,807.42 acres**, all as more particularly outlined on a plat on file in the Office of Mineral Resources, Department of Natural Resources. All bearings, distances and coordinates are based on Louisiana Coordinate System of 1927, (North or South Zone).

NOTE: The above description of the Tract nominated for lease has been provided and corrected, where required, exclusively by the nomination party. Any mineral lease selected from this Tract and awarded by the Louisiana State Mineral Board shall be without warranty of any kind, either express, implied, or statutory, including, but not limited to, the implied warranties of merchantability and fitness for a particular purpose. Should the mineral lease awarded by the Louisiana State Mineral Board be subsequently modified, cancelled or abrogated due to the existence of conflicting leases, operating agreements, private claims or other future obligations or conditions which may affect all or any portion of the leased Tract, it shall not relieve the Lessee of the obligation to pay any bonus due thereon to the Louisiana State Mineral Board, nor shall the Louisiana State Mineral Board be obligated to refund any consideration paid by the Lessor prior to such modification, cancellation, or abrogation, including, but not limited to, bonuses, rentals and royalties.

NOTE: The State of Louisiana does hereby reserve, and this lease shall be subject to, the imprescriptible right of surface use in the nature of a servitude in favor of the Department of Natural Resources, including its Offices and Commissions, for the sole purpose of implementing, constructing, servicing and maintaining approved coastal zone management and/or restoration projects. Utilization of any and all rights derived under this lease by the mineral lessee, its agents, successors or assigns, shall not interfere with nor hinder the reasonable surface use by the Department of Natural Resources, its Offices or Commissions, as herein above reserved.

Bidder	Cash Payment	Price/Acre	Rental	Oil	Gas	Other

Applicant: Harold J. Anderson, Inc.



CAMERON PARISH

WEST CAMERON AREA, REVISED

BLOCK WC0003

BLOCK WC0004

SL 17635

SL 17637

SL 17634

SL 17636

SL 17842

SL 17845

BLOCK WC0028

BLOCK WC0005

BLOCK WC0027

BLOCK WC0026

P.O.B.
X=1,393,830.00
Y=401,082.74

LA

US

