

**TRACT 36214 - Bienville and Bossier Parishes, Louisiana**

All of the lands now or formerly constituting the beds and bottoms of all water bodies of every nature and description the title of which vests in the State of Louisiana, together with all islands arising therein and other lands formed by accretion or by reliction, where allowed by law, excepting tax adjudicated lands, and not presently under mineral lease on April 14, 2004, situated in Bienville and Bossier Parishes, Louisiana, and more particularly described as follows: Beginning at a point having Coordinates of X = 1,720,000.00 and Y = 624,400.00; thence North 5,520.00 feet to a point on the South line of State Lease No. 16833 having Coordinates of X = 1,720,000.00 and Y = 629,920.00; thence East 5,260.00 feet along the South line of said State Lease No. 16833 to its Southeast corner having Coordinates of X = 1,725,260.00 and Y = 629,920.00; thence East 5,440.00 feet to a point having Coordinates of X = 1,730,700.00 and Y = 629,920.00; thence South 5,520.00 feet to a point having Coordinates of X = 1,730,700.00 and Y = 624,400.00; thence West 10,700.00 feet to the point of beginning, including all lands lying below the elevation of 148.60 feet, as established by the BLM and also as established in a boundary agreement dated April 16, 1955, **LESS AND EXCEPT** that portion of the nomination from the surface to 5530 feet located within the geographical boundary of the Underground Storage Lease No. 470, being the Bistineau Gas Storage Pool in the Sligo Formation, also known as the Pettit Formation, containing approximately **388 acres**, all as more particularly outlined on a plat on file in the Office of Mineral Resources, Department of Natural Resources. All bearings, distances and coordinates are based on Louisiana Coordinate System of 1927, (North or South Zone), where applicable.

NOTE: The above description of the Tract nominated for lease has been provided and corrected, where required, exclusively by the nomination party. Any mineral lease selected from this Tract and awarded by the Louisiana State Mineral Board shall be without warranty of any kind, either express, implied, or statutory, including, but not limited to, the implied warranties of merchantability and fitness for a particular purpose. Should the mineral lease awarded by the Louisiana State Mineral Board be subsequently modified, cancelled or abrogated due to the existence of conflicting leases, operating agreements, private claims or other future obligations or conditions which may affect all or any portion of the leased Tract, it shall not relieve the Lessee of the obligation to pay any bonus due thereon to the Louisiana State Mineral Board, nor shall the Louisiana State Mineral Board be obligated to refund any consideration paid by the Lessor prior to such modification, cancellation, or abrogation, including, but not limited to, bonuses, rentals and royalties.

NOTE: This tract encompasses an area beneath which is located on the Bistineau Gas Storage Pool in the Sligo formation of the Pettit Porosity. Accordingly, any mineral related activity, including, but not limited to, the exploration and drilling for, and the production and storage of oil, gas and other liquid or gaseous minerals, conducted under a valid mineral

lease which may be obtained from the State, shall be subject to any statewide orders issued by the Louisiana Office of Conservation pertinent to conducting such operations in this area and upon this tract, including particularly, but not limited to, the following: Order Nos. 287, 287-A, 287-A-1, 287-B, Supplement to 287-B, 287-B-1, 287-B-2 and 287-B-3. The successful bidder on this tract shall contact the operator of the Bistineau Gas Storage Pool and the Office of Conservation prior to initiating and conducting any of the aforementioned activity hereon.

Applicant: Bistineau Partners

| Bidder | Cash Payment | Price/Acre | Rental | Oil | Gas | Other |
|--------|--------------|------------|--------|-----|-----|-------|
|        |              |            |        |     |     |       |
|        |              |            |        |     |     |       |
|        |              |            |        |     |     |       |
|        |              |            |        |     |     |       |



LAKE BISTINEAU

SL 16833

BOSSIER PARISH

BIENVILLE PARISH

T16N - R10W

USL 470

P.O.B  
X=1,720,000.00  
Y=624,400.00



**TRACT 36215 - Bienville and Bossier Parishes, Louisiana**

All of the lands now or formerly constituting the beds and bottoms of all water bodies of every nature and description the title of which vests in the State of Louisiana, together with all islands arising therein and other lands formed by accretion or by reliction, where allowed by law, excepting tax adjudicated lands, and not presently under mineral lease on April 14, 2004, situated in Bienville and Bossier Parishes, Louisiana, and more particularly described as follows: Beginning at a point having Coordinates of X = 1,720,000.00 and Y = 624,400.00; thence West 10,508.65 feet to a point having Coordinates of X = 1,709,491.35 and Y = 624,400.00; thence North 505.90 feet to the Southeast corner of State Lease No. 17640 having Coordinates of X = 1,709,491.35 and Y = 624,905.90; thence North 00 degrees 15 minutes 52 seconds East 5,014.16 feet along the East line of said State Lease No. 17640 to a point on the South line of State Lease No. 16833 having Coordinates of X = 1,709,514.50 and Y = 629,920.00; thence East 10,485.50 feet along the South line of said State Lease No. 16833 to a point having Coordinates of X = 1,720,000.00 and Y = 629,920.00; thence South 5,520.00 feet to the point of beginning, including all lands lying below the elevation of 148.60 feet, as established by the BLM and also as established in a boundary agreement dated April 16, 1955, **LESS AND EXCEPT** Underground Storage Lease No. 470, and also that portion of the nomination from the surface to 5530 feet located within the geographical boundary of the Underground Storage Lease No. 470, being the Bistineau Gas Storage Pool in the Sligo Formation, also known as the Pettit Formation, containing approximately **600 acres**, all as more particularly outlined on a plat on file in the Office of Mineral Resources, Department of Natural Resources. All bearings, distances and coordinates are based on Louisiana Coordinate System of 1927, (North or South Zone), where applicable.

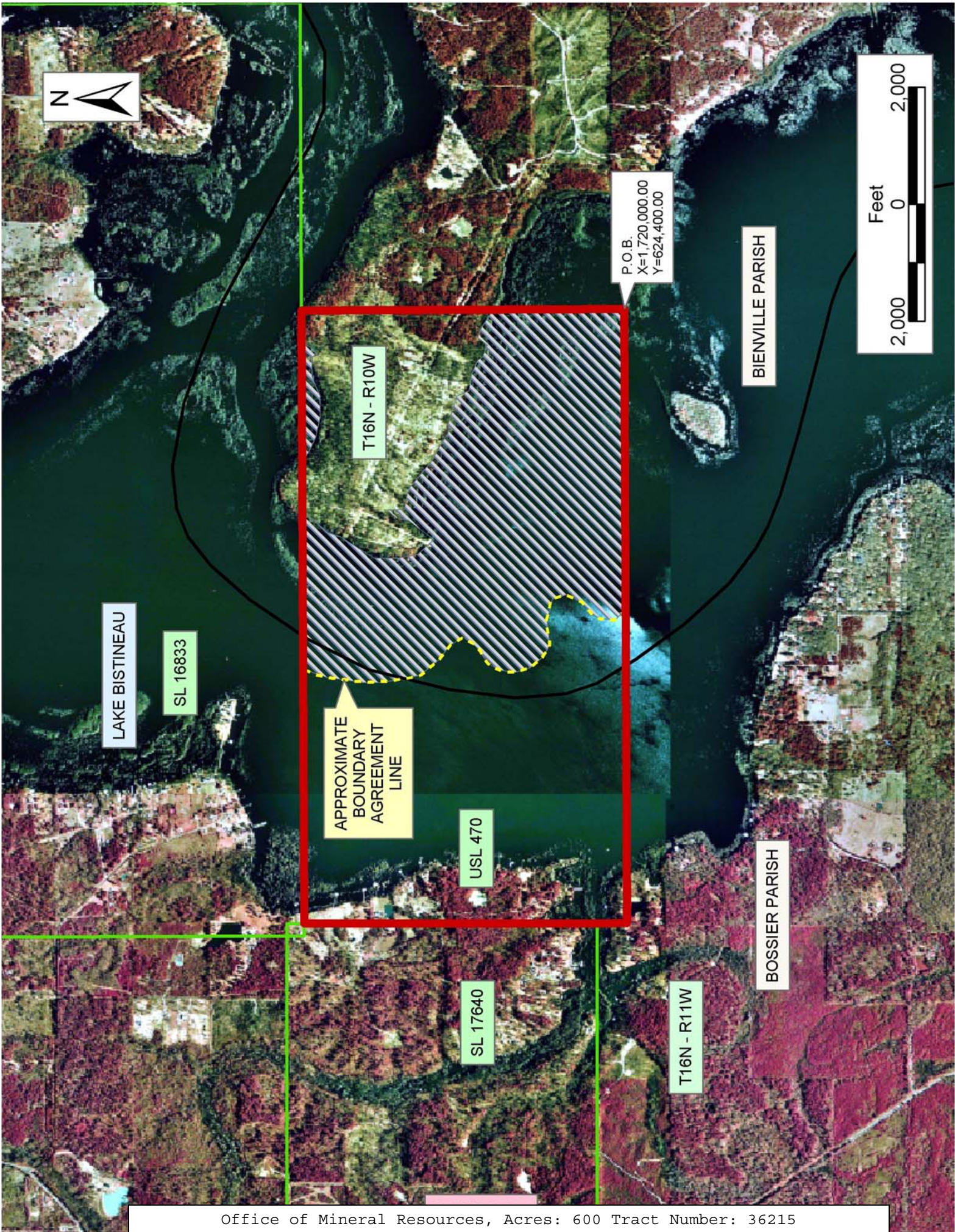
NOTE: The above description of the Tract nominated for lease has been provided and corrected, where required, exclusively by the nomination party. Any mineral lease selected from this Tract and awarded by the Louisiana State Mineral Board shall be without warranty of any kind, either express, implied, or statutory, including, but not limited to, the implied warranties of merchantability and fitness for a particular purpose. Should the mineral lease awarded by the Louisiana State Mineral Board be subsequently modified, cancelled or abrogated due to the existence of conflicting leases, operating agreements, private claims or other future obligations or conditions which may affect all or any portion of the leased Tract, it shall not relieve the Lessee of the obligation to pay any bonus due thereon to the Louisiana State Mineral Board, nor shall the Louisiana State Mineral Board be obligated to refund any consideration paid by the Lessor prior to such modification, cancellation, or abrogation, including, but not limited to, bonuses, rentals and royalties.

NOTE: This tract encompasses an area beneath which is located on the Bistineau Gas Storage Pool in the Sligo formation of the Pettit Porosity. Accordingly, any mineral related activity, including, but not limited to, the exploration and drilling for, and the production and storage of oil,

gas and other liquid or gaseous minerals, conducted under a valid mineral lease which may be obtained from the State, shall be subject to any statewide orders issued by the Louisiana Office of Conservation pertinent to conducting such operations in this area and upon this tract, including particularly, but not limited to, the following: Order Nos. 287, 287-A, 287-A-1, 287-B, Supplement to 287-B, 287-B-1, 287-B-2 and 287-B-3. The successful bidder on this tract shall contact the operator of the Bistineau Gas Storage Pool and the Office of Conservation prior to initiating and conducting any of the aforementioned activity hereon.

Applicant: Bistineau Partners

| Bidder | Cash Payment | Price/Acre | Rental | Oil | Gas | Other |
|--------|--------------|------------|--------|-----|-----|-------|
|        |              |            |        |     |     |       |
|        |              |            |        |     |     |       |
|        |              |            |        |     |     |       |
|        |              |            |        |     |     |       |



**TRACT 36216 - St. James Parish, Louisiana**

All of the lands now or formerly constituting the beds and bottoms of all water bodies of every nature and description the title of which vests in the State of Louisiana, together with all islands arising therein and other lands formed by accretion or by reliction, where allowed by law, excepting tax adjudicated lands, and not presently under mineral lease on April 14, 2004, situated in St. James Parish, Louisiana, and more particularly described as follows: Beginning at the Northwest corner of State Lease No. 17867 having Coordinates of X = 2,155,090.00 and Y = 494,865.00; thence North 30 degrees 07 minutes 23 seconds West 9,584.37 feet to the Southwest corner of State Lease No. 17649 having Coordinates of X = 2,150,280.00 and Y = 503,155.00; thence North 52 degrees 19 minutes 57 seconds East 10,416.01 feet to the Northeast corner of said State Lease No. 17649 having Coordinates of X = 2,158,525.00 and Y = 509,520.00; thence South 03 degrees 52 minutes 34 seconds East 13,240.28 feet to the Northeast corner of said State Lease No. 17867 having Coordinates of X = 2,159,420.00 and Y = 496,310.00; thence South 71 degrees 32 minutes 43 seconds West 4,564.75 feet on the North line of said State Lease No. 17867 to the point of beginning, containing approximately **544 acres**, all as more particularly outlined on a plat on file in the Office of Mineral Resources, Department of Natural Resources. All bearings, distances and coordinates are based on Louisiana Coordinate System of 1927, (North or South Zone), where applicable.

NOTE: The above description of the Tract nominated for lease has been provided and corrected, where required, exclusively by the nomination party. Any mineral lease selected from this Tract and awarded by the Louisiana State Mineral Board shall be without warranty of any kind, either express, implied, or statutory, including, but not limited to, the implied warranties of merchantability and fitness for a particular purpose. Should the mineral lease awarded by the Louisiana State Mineral Board be subsequently modified, cancelled or abrogated due to the existence of conflicting leases, operating agreements, private claims or other future obligations or conditions which may affect all or any portion of the leased Tract, it shall not relieve the Lessee of the obligation to pay any bonus due thereon to the Louisiana State Mineral Board, nor shall the Louisiana State Mineral Board be obligated to refund any consideration paid by the Lessor prior to such modification, cancellation, or abrogation, including, but not limited to, bonuses, rentals and royalties.

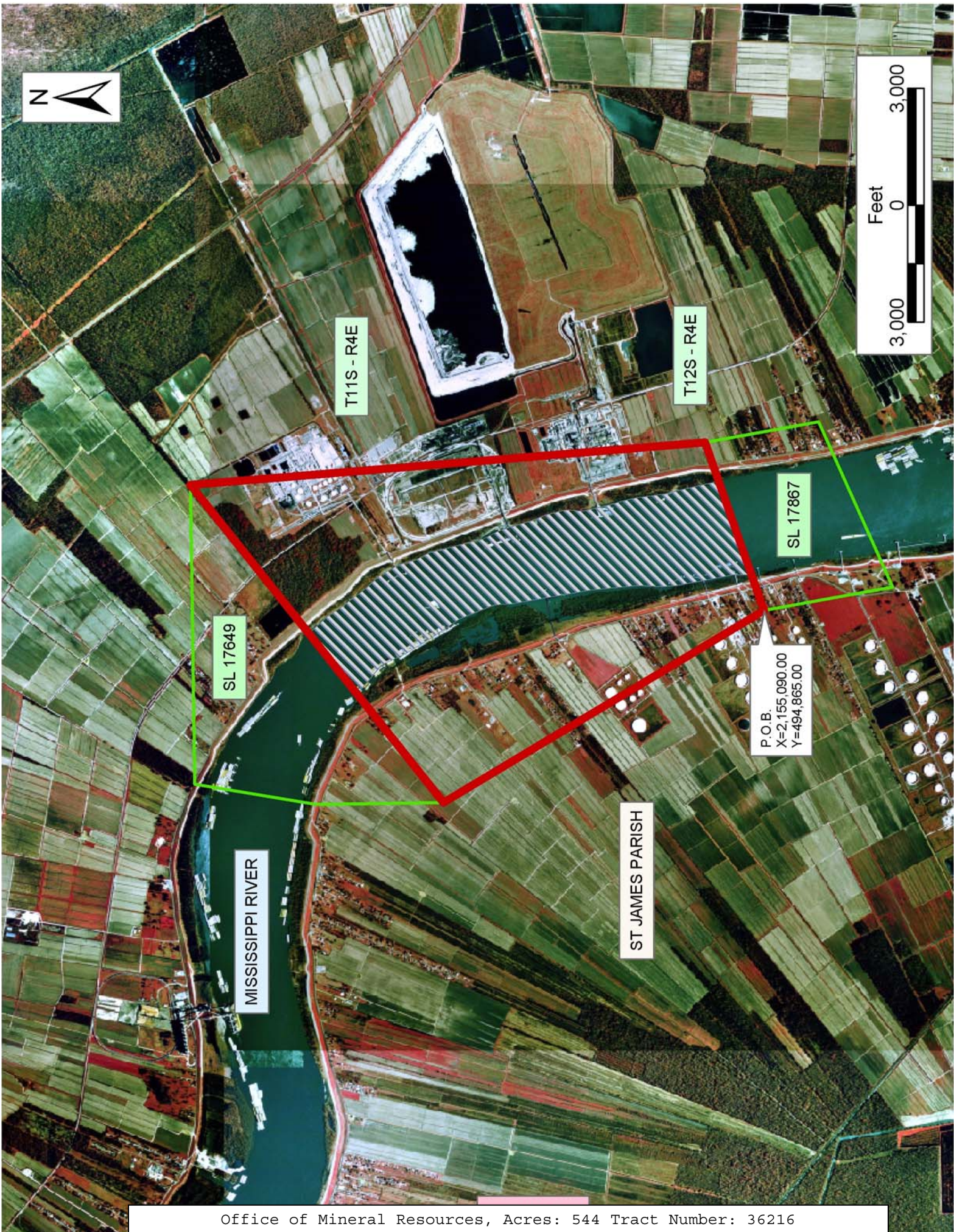
NOTE: The State of Louisiana does hereby reserve, and this lease shall be subject to, the imprescriptible right of surface use in the nature of a servitude in favor of the Department of Natural Resources, including its Offices and Commissions, for the sole purpose of implementing, constructing, servicing and maintaining approved coastal zone management and/or restoration projects. Utilization of any and all rights derived under this lease by the mineral lessee, its agents, successors or assigns, shall not interfere with nor hinder the reasonable surface use by the

Department of Natural Resources, its Offices or Commissions, as herein above reserved.

Applicant: Angelle & Donohue Oil & Gas Properties, Inc.

| Bidder | Cash Payment | Price/Acre | Rental | Oil | Gas | Other |
|--------|--------------|------------|--------|-----|-----|-------|
|        |              |            |        |     |     |       |
|        |              |            |        |     |     |       |
|        |              |            |        |     |     |       |
|        |              |            |        |     |     |       |





T11S - R4E

T12S - R4E

SL 17649

SL 17867

P.O.B.  
X=2,155,090.00  
Y=494,865.00

MISSISSIPPI RIVER

ST JAMES PARISH

**TRACT 36217 - Portion of Block 70, Chandeleur Sound Area, St. Bernard Parish, Louisiana**

All of the lands now or formerly constituting the beds and bottoms of all water bodies of every nature and description the title of which vests in the State of Louisiana, together with all islands arising therein and other lands formed by accretion or by reliction, where allowed by law, excepting tax adjudicated lands, and not presently under mineral lease on April 14, 2004, situated in St. Bernard Parish, Louisiana, and more particularly described as follows: Beginning at a point on the West line of Block 70, Chandeleur Sound Area, having Coordinates of X = 2,620,600.00 and Y = 388,705.00; thence North 7,375.00 feet along the West line of said Block 70 to its Northwest corner having Coordinates of X = 2,620,600.00 and Y = 396,080.00; thence East 10,700.00 feet along the North line of said Block 70 to the Northwest corner of State Lease No. 17550 having Coordinates of X = 2,631,300.00 and Y = 396,080.00; thence along the boundary of said State Lease No. 17550 the following courses: South 1,620.00 feet to a point having Coordinates of X = 2,631,300.00 and Y = 394,460.00; East 1,540.00 feet to a point having Coordinates of X = 2,632,840.00 and Y = 394,460.00 and North 1,620.00 to its Northeast corner, said corner also being a point on the North line of said Block 70, having Coordinates of X = 2,632,840.00 and Y = 396,080.00; thence East 2,510.00 feet along the North line of said Block 70 to its Northeast corner having Coordinates of X = 2,635,350.00 and Y = 396,080.00; thence South 5,766.00 feet along the East line of said Block 70 to the Northeast corner of State Lease No. 17549 having Coordinates of X = 2,635,350.00 and Y = 390,314.00; thence West 4,332.00 feet along the North line of said State Lease No. 17549 to its Northwest corner having Coordinates of X = 2,631,018.00 and Y = 390,314.00; thence South 1,609.00 feet along the West line of said State Lease No. 17549 to its Southwest corner having Coordinates of X = 2,631,018.00 and Y = 388,705.00; thence West 10,418.00 feet to the point of beginning, **LESS AND EXCEPT** all that portion of Operating Agreement A0124, lying entirely within the above described tract, more specifically described as follows: Beginning at a point within Block 70, Chandeleur Sound Area, having Coordinates of X = 2,625,880.00 and Y = 390,018.65; thence North 1,700.00 feet to a point; thence East 2,300.00 feet to a point; thence South 1,700.00 feet to a point; thence West 2,300.00 feet to the point of beginning, containing 89.76 acres; containing approximately **2,190.23 acres**, all as more particularly outlined on a plat on file in the Office of Mineral Resources, Department of Natural Resources. All bearings, distances and coordinates are based on Louisiana Coordinate System of 1927, (North or South Zone), where applicable.

NOTE: The above description of the Tract nominated for lease has been provided and corrected, where required, exclusively by the nomination party. Any mineral lease selected from this Tract and awarded by the Louisiana State Mineral Board shall be without warranty of any kind, either express, implied, or statutory, including, but not limited to, the implied warranties of merchantability and fitness for a particular

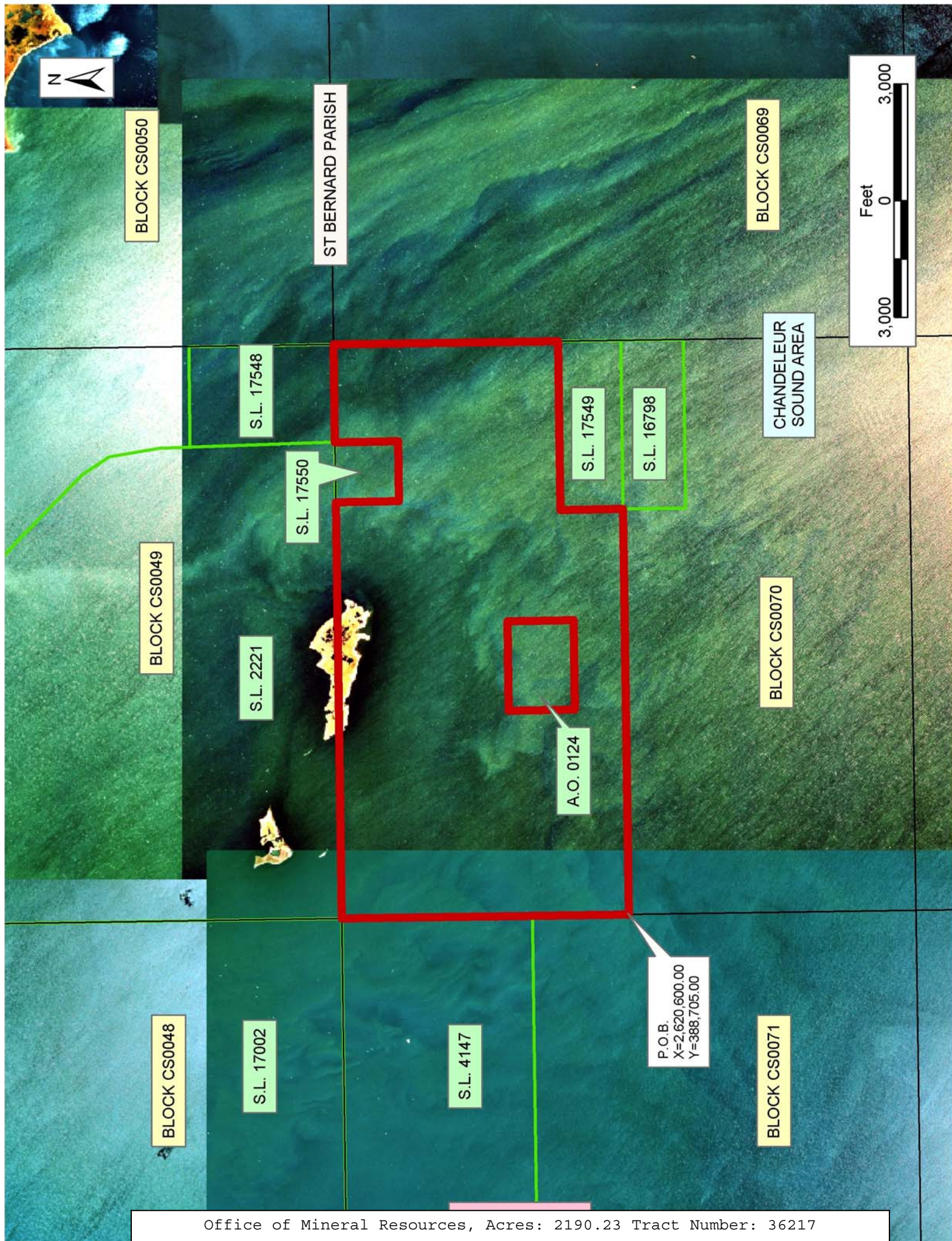
purpose. Should the mineral lease awarded by the Louisiana State Mineral Board be subsequently modified, cancelled or abrogated due to the existence of conflicting leases, operating agreements, private claims or other future obligations or conditions which may affect all or any portion of the leased Tract, it shall not relieve the Lessee of the obligation to pay any bonus due thereon to the Louisiana State Mineral Board, nor shall the Louisiana State Mineral Board be obligated to refund any consideration paid by the Lessor prior to such modification, cancellation, or abrogation, including, but not limited to, bonuses, rentals and royalties.

NOTE: The State of Louisiana does hereby reserve, and this lease shall be subject to, the imprescriptible right of surface use in the nature of a servitude in favor of the Department of Natural Resources, including its Offices and Commissions, for the sole purpose of implementing, constructing, servicing and maintaining approved coastal zone management and/or restoration projects. Utilization of any and all rights derived under this lease by the mineral lessee, its agents, successors or assigns, shall not interfere with nor hinder the reasonable surface use by the Department of Natural Resources, its Offices or Commissions, as herein above reserved.

NOTE: The Department of Wildlife and Fisheries has designated certain areas in the coastal waters of the State of Louisiana as Oyster Seed Bed Areas. The exact location of those Seed Bed Areas must be obtained from the Department of Wildlife and Fisheries and any work done under a mineral lease from the State of Louisiana may necessarily be conducted in conformity with the rules and regulations promulgated by the said Department of Wildlife and Fisheries for Oyster Seed Bed Areas.

Applicant: Energy Partners, Inc.

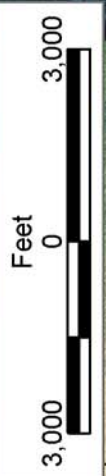
| Bidder | Cash Payment | Price/Acre | Rental | Oil | Gas | Other |
|--------|--------------|------------|--------|-----|-----|-------|
|        |              |            |        |     |     |       |
|        |              |            |        |     |     |       |
|        |              |            |        |     |     |       |
|        |              |            |        |     |     |       |



BLOCK CS0050

ST BERNARD PARISH

BLOCK CS0069



CHANDELEUR SOUND AREA

S.L. 17548

S.L. 17550

S.L. 17549

S.L. 16798

BLOCK CS0049

S.L. 2221

A.O. 0124

BLOCK CS0070

BLOCK CS0048

S.L. 17002

S.L. 4147

P.O.B.  
X=2,620,600.00  
Y=388,705.00

BLOCK CS0071

**TRACT 36218 - Portion of Block 69, Chandeleur Sound Area, St. Bernard Parish, Louisiana**

All of the lands now or formerly constituting the beds and bottoms of all water bodies of every nature and description the title of which vests in the State of Louisiana, together with all islands arising therein and other lands formed by accretion or by reliction, where allowed by law, excepting tax adjudicated lands, and not presently under mineral lease on April 14, 2004, situated in St. Bernard Parish, Louisiana, and more particularly described as follows: Beginning at the Northwest corner of Block 69, Chandeleur Sound Area, having Coordinates of X = 2,635,350.00 and Y = 396,080.00; thence East 10,690.00 feet to a point having Coordinates of X = 2,646,040.00 and Y = 396,080.00; thence South 8,703.65 feet to the Northeast corner of State Lease No. 16799 having Coordinates of X = 2,646,040.00 and Y = 387,376.35; thence along the boundary of said State Lease No. 16799 the following courses: West 9,036.00 feet to a point having Coordinates of X = 2,637,004.00 and Y = 387,376.35; North 1,328.65 feet to a point having Coordinates of X = 2,637,004.00 and Y = 388,705.00 and West 1,654.00 feet to its Northwest corner, said corner also being the Southeast corner of State Lease No. 17549, having Coordinates of X = 2,635,350.00 and Y = 388,705.00; thence North 1,609.00 feet along the East line of said State Lease No. 17549 to its Northeast corner, said corner also being a point on the West line of said Block 69, having Coordinates of X = 2,635,350.00 and Y = 390,314.00; thence North 5,766.00 feet along the West line of said Block 69 to the point of beginning, containing **2,085.50 acres**, all as more particularly outlined on a plat on file in the Office of Mineral Resources, Department of Natural Resources. All bearings, distances and coordinates are based on Louisiana Coordinate System of 1927, (North or South Zone), where applicable.

NOTE: The above description of the Tract nominated for lease has been provided and corrected, where required, exclusively by the nomination party. Any mineral lease selected from this Tract and awarded by the Louisiana State Mineral Board shall be without warranty of any kind, either express, implied, or statutory, including, but not limited to, the implied warranties of merchantability and fitness for a particular purpose. Should the mineral lease awarded by the Louisiana State Mineral Board be subsequently modified, cancelled or abrogated due to the existence of conflicting leases, operating agreements, private claims or other future obligations or conditions which may affect all or any portion of the leased Tract, it shall not relieve the Lessee of the obligation to pay any bonus due thereon to the Louisiana State Mineral Board, nor shall the Louisiana State Mineral Board be obligated to refund any consideration paid by the Lessor prior to such modification, cancellation, or abrogation, including, but not limited to, bonuses, rentals and royalties.

NOTE: The State of Louisiana does hereby reserve, and this lease shall be subject to, the imprescriptible right of surface use in the nature of a servitude in favor of the Department of Natural Resources, including its Offices and Commissions, for the sole purpose of implementing,

constructing, servicing and maintaining approved coastal zone management and/or restoration projects. Utilization of any and all rights derived under this lease by the mineral lessee, its agents, successors or assigns, shall not interfere with nor hinder the reasonable surface use by the Department of Natural Resources, its Offices or Commissions, as herein above reserved.

NOTE: The Department of Wildlife and Fisheries has designated certain areas in the coastal waters of the State of Louisiana as Oyster Seed Bed Areas. The exact location of those Seed Bed Areas must be obtained from the Department of Wildlife and Fisheries and any work done under a mineral lease from the State of Louisiana may necessarily be conducted in conformity with the rules and regulations promulgated by the said Department of Wildlife and Fisheries for Oyster Seed Bed Areas.

Applicant: Energy Partners, Inc.

| Bidder | Cash Payment | Price/Acre | Rental | Oil | Gas | Other |
|--------|--------------|------------|--------|-----|-----|-------|
|        |              |            |        |     |     |       |
|        |              |            |        |     |     |       |
|        |              |            |        |     |     |       |
|        |              |            |        |     |     |       |



CHANDELEUR SOUND AREA

ST BERNARD PARISH



BLOCK CS0050

BLOCK CS0069

S.L. 16799

BLOCK CS0049

S.L. 17548

P.O.B.  
X=2,635,350.00  
Y=396,080.00

S.L. 17549

S.L. 16798

BLOCK CS0070

**TRACT 36219 - Portion of Block 69, Chandeleur Sound Area, St. Bernard Parish, Louisiana**

All of the lands now or formerly constituting the beds and bottoms of all water bodies of every nature and description the title of which vests in the State of Louisiana, together with all islands arising therein and other lands formed by accretion or by reliction, where allowed by law, excepting tax adjudicated lands, and not presently under mineral lease on April 14, 2004, situated in St. Bernard Parish, Louisiana, and more particularly described as follows: Beginning at the Southwest corner of Block 69, Chandeleur Sound Area, having Coordinates of X = 2,635,350.00 and Y = 381,330.00; thence North 1,425.00 feet along the West line of said Block 69 to the most Westerly Southwest corner of State Lease No. 16799 having Coordinates of X = 2,635,350.00 and Y = 382,755.00; thence along the boundary of said State Lease No. 16799 the following courses: East 1,476.00 feet to a point having Coordinates of X = 2,636,826.00 and Y = 382,755.00; South 922.00 feet to a point having Coordinates of X = 2,636,826.00 and Y = 381,833.00 and East 8,714.00 feet to its Southeast corner having Coordinates of X = 2,645,540.00 and Y = 381,833.00; thence South 503.00 feet to a point on the South line of said Block 69 having Coordinates of X = 2,645,540.00 and Y = 381,330.00; thence West 10,190.00 feet along the South line of said Block 69 to the point of beginning, containing **148.91 acres**, all as more particularly outlined on a plat on file in the Office of Mineral Resources, Department of Natural Resources. All bearings, distances and coordinates are based on Louisiana Coordinate System of 1927, (North or South Zone), where applicable.

NOTE: The above description of the Tract nominated for lease has been provided and corrected, where required, exclusively by the nomination party. Any mineral lease selected from this Tract and awarded by the Louisiana State Mineral Board shall be without warranty of any kind, either express, implied, or statutory, including, but not limited to, the implied warranties of merchantability and fitness for a particular purpose. Should the mineral lease awarded by the Louisiana State Mineral Board be subsequently modified, cancelled or abrogated due to the existence of conflicting leases, operating agreements, private claims or other future obligations or conditions which may affect all or any portion of the leased Tract, it shall not relieve the Lessee of the obligation to pay any bonus due thereon to the Louisiana State Mineral Board, nor shall the Louisiana State Mineral Board be obligated to refund any consideration paid by the Lessor prior to such modification, cancellation, or abrogation, including, but not limited to, bonuses, rentals and royalties.

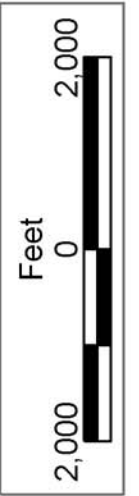
NOTE: The State of Louisiana does hereby reserve, and this lease shall be subject to, the imprescriptible right of surface use in the nature of a servitude in favor of the Department of Natural Resources, including its Offices and Commissions, for the sole purpose of implementing, constructing, servicing and maintaining approved coastal zone management and/or restoration projects. Utilization of any and all rights derived under this lease by the mineral lessee, its agents, successors or assigns,



shall not interfere with nor hinder the reasonable surface use by the Department of Natural Resources, its Offices or Commissions, as herein above reserved.

Applicant: Energy Partners, Inc.

| Bidder | Cash Payment | Price/Acre | Rental | Oil | Gas | Other |
|--------|--------------|------------|--------|-----|-----|-------|
|        |              |            |        |     |     |       |
|        |              |            |        |     |     |       |
|        |              |            |        |     |     |       |
|        |              |            |        |     |     |       |



BLOCK CS0069

CHANDELEUR SOUND AREA

S.L. 16799

BLOCK BS0001

BRETON SOUND AREA

ST BERNARD PARISH

BLOCK CS0070

P.O.B.  
X=2,635,350.00  
Y=381,330.00

BLOCK MP0004

MAIN PASS  
AREA, REVISED

**TRACT 36220 - Portion of Blocks 2, and 3, Breton Sound Area, Blocks 67, and 68, Chandeleur Sound Area, St. Bernard Parish, Louisiana**

All of the lands now or formerly constituting the beds and bottoms of all water bodies of every nature and description the title of which vests in the State of Louisiana, together with all islands arising therein and other lands formed by accretion or by reliction, where allowed by law, excepting tax adjudicated lands, and not presently under mineral lease on April 14, 2004, situated in St. Bernard Parish, Louisiana, and more particularly described as follows: Beginning at a point on the South line of Block 68, Chandeleur Sound Area, having Coordinates of X = 2,657,475.00 and Y = 381,330.00; thence North 7,375.00 feet to a point having Coordinates of X = 2,657,475.00 and Y = 388,705.00; thence East 2,800.00 feet to a point on the West line of State Lease No. 17122 having Coordinates of X = 2,660,275.00 and Y = 388,705.00; thence South 2,575.00 feet along the West line of said State Lease No. 17122 to its Southwest corner having Coordinates of X = 2,660,275.00 and Y = 386,130.00; thence East 4,575.00 feet along the South line of said State Lease No. 17122 to its Southeast corner, said corner also being a point on the East line of said Block 68, having Coordinates of X = 2,664,850.00 and Y = 386,130.00; thence South 1,248.00 feet along the East line of said Block 68 to the Northeast corner of State Lease No. 17456 having Coordinates of X = 2,664,850.00 and Y = 384,882.00; thence along the boundary of said State Lease No. 17456 the following courses: West 2,790.00 to a point having Coordinates of X = 2,662,060.00 and Y = 384,882.00; South 3,552.00 feet to a point having Coordinates of X = 2,662,060.00 and Y = 381,330.00 and North 45 degrees 38 minutes 00 seconds East 3,902.76 feet to its Southeast corner, said corner also being a point on the East line of said Block 68, having Coordinates of X = 2,664,850.00 and Y = 384,059.00; thence South 419.00 feet along the East line of said Block 68 to the most Westerly Southwest corner of State Lease No. 17407 having Coordinates of X = 2,664,850.00 and Y = 383,640.00; thence along the boundary of said State Lease No. 17407 the following courses: South 62 degrees 06 minutes 42 seconds East 4,938.55 feet to a point having Coordinates of X = 2,669,215.00 and Y = 381,330.00 and East 3,010.00 feet to its Southeast corner, said corner also being the Southwest corner of State Lease No. 17408, and a point on the Southern boundary of Block 67, Chandeleur Sound Area, having Coordinates of X = 2,672,225.00 and Y = 381,330.00; thence East 475.00 feet along the South line of said State Lease No. 17408 and also to the Northwest corner of State Lease No. 17411 having Coordinates of X = 2,672,700.00 and Y = 381,330.00; thence South 1,330.00 feet along the West line of said State Lease No. 17411 to its Southwest corner having Coordinates of X = 2,672,700.00 and Y = 380,000.00; thence South 4,500.00 feet to a point having Coordinates of X = 2,672,700.00 and Y = 375,500.00; thence West 7,850.00 feet to a point on the West line of Block 3, Breton Sound Area, having Coordinates of X = 2,664,850.00 and Y = 375,500.00; thence North 51 degrees 40 minutes 24 seconds West 9,401.04 feet to the point of beginning, containing approximately **2,497.98 acres**, all as more particularly outlined on a plat on file in the Office of Mineral Resources, Department of Natural Resources. All bearings, distances and

coordinates are based on Louisiana Coordinate System of 1927, (North or South Zone), where applicable.

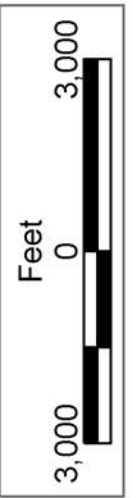
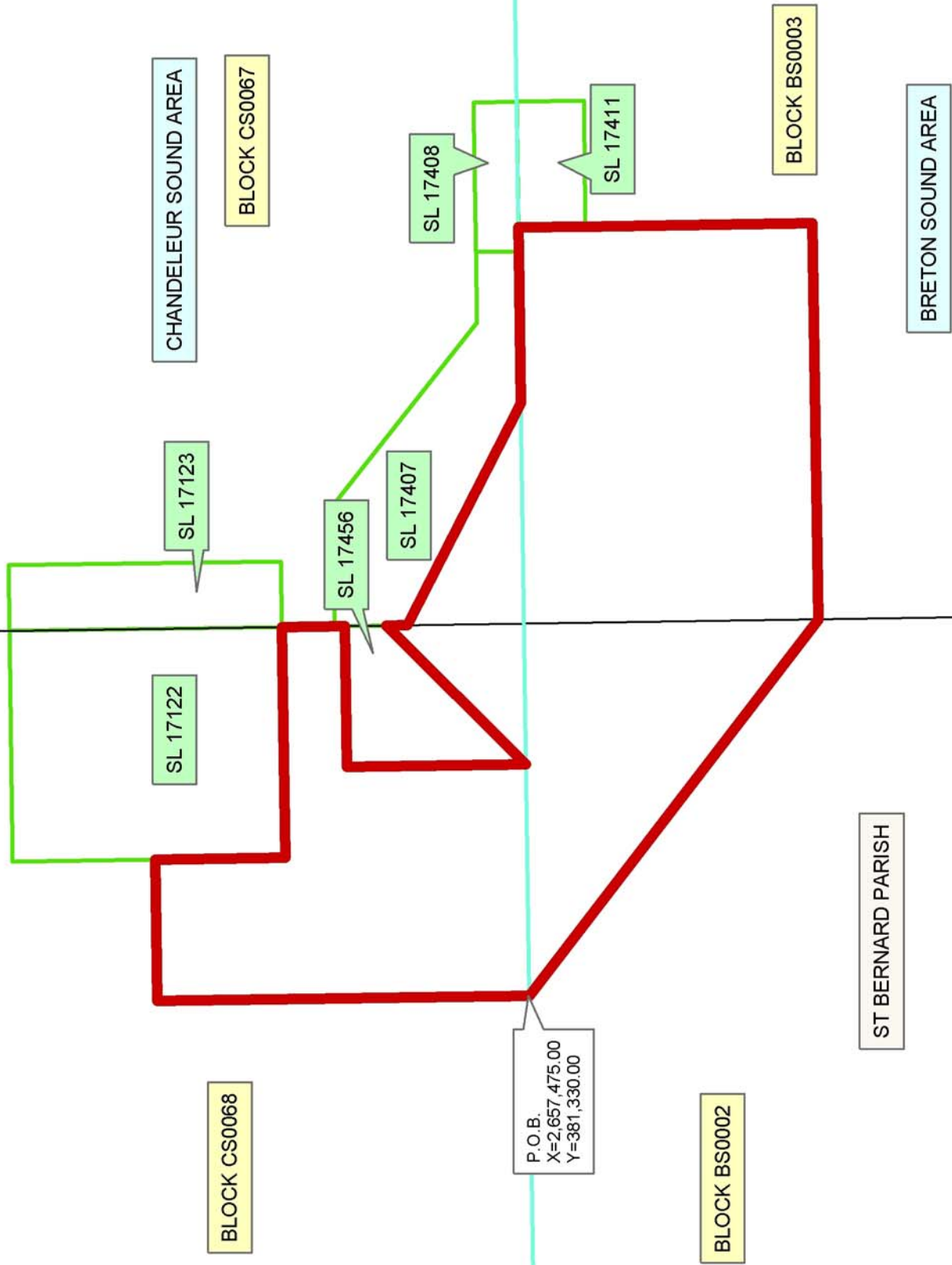
NOTE: The above description of the Tract nominated for lease has been provided and corrected, where required, exclusively by the nomination party. Any mineral lease selected from this Tract and awarded by the Louisiana State Mineral Board shall be without warranty of any kind, either express, implied, or statutory, including, but not limited to, the implied warranties of merchantability and fitness for a particular purpose. Should the mineral lease awarded by the Louisiana State Mineral Board be subsequently modified, cancelled or abrogated due to the existence of conflicting leases, operating agreements, private claims or other future obligations or conditions which may affect all or any portion of the leased Tract, it shall not relieve the Lessee of the obligation to pay any bonus due thereon to the Louisiana State Mineral Board, nor shall the Louisiana State Mineral Board be obligated to refund any consideration paid by the Lessor prior to such modification, cancellation, or abrogation, including, but not limited to, bonuses, rentals and royalties.

NOTE: The Office of Mineral Resources will require a minimum bonus of \$190 per acre and a minimum royalty of 22%.

NOTE: The State of Louisiana does hereby reserve, and this lease shall be subject to, the imprescriptible right of surface use in the nature of a servitude in favor of the Department of Natural Resources, including its Offices and Commissions, for the sole purpose of implementing, constructing, servicing and maintaining approved coastal zone management and/or restoration projects. Utilization of any and all rights derived under this lease by the mineral lessee, its agents, successors or assigns, shall not interfere with nor hinder the reasonable surface use by the Department of Natural Resources, its Offices or Commissions, as herein above reserved.

Applicant: Fourtune Resources

| Bidder | Cash Payment | Price/Acre | Rental | Oil | Gas | Other |
|--------|--------------|------------|--------|-----|-----|-------|
|        |              |            |        |     |     |       |
|        |              |            |        |     |     |       |
|        |              |            |        |     |     |       |
|        |              |            |        |     |     |       |



**TRACT 36221 - Portion of Block 70, Chandeleur Sound Area, St. Bernard Parish, Louisiana**

All of the lands now or formerly constituting the beds and bottoms of all water bodies of every nature and description the title of which vests in the State of Louisiana, together with all islands arising therein and other lands formed by accretion or by reliction, where allowed by law, excepting tax adjudicated lands, and not presently under mineral lease on April 14, 2004, situated in St. Bernard Parish, Louisiana, and more particularly described as follows: Beginning at a point on the West line of Block 70, Chandeleur Sound Area, having Coordinates of X = 2,620,600.00 and Y = 388,705.00; thence East 10,418.00 feet to the Northwest corner of State Lease No. 16798, said corner also being the Southwest corner of State Lease No. 17549, having Coordinates of X = 2,631,018.00 and Y = 388,705.00; thence South 1,609.00 feet along the West line of said State Lease No. 16798 to its Southwest corner having Coordinates of X = 2,631,018.00 and Y = 387,096.00; thence East 4,332.00 feet along the South line of said State Lease No. 16798 to its Southeast corner, said corner also being a point on the East line of said Block 70, having Coordinates of X = 2,635,350.00 and Y = 387,096.00; thence South 5,766.00 feet along the East line of said Block 70 to its Southeast corner having Coordinates of X = 2,635,350.00 and Y = 381,330.00; thence West 12,714.00 feet along the South line of said Block 70 to the Southeast corner of State Lease No. 17278 having Coordinates of X = 2,622,636.00 and Y = 381,330.00; thence North 500.00 feet along the East line of said State Lease No. 17278 to its Northeast corner having Coordinates of X = 2,622,636.00 and Y = 381,830.00; thence West 2,036.00 feet along the North line of said State Lease No. 17278 to its Northwest corner, said corner also being a point on the West line of said Block 70, having Coordinates of X = 2,620,600.00 and Y = 381,830.00; thence North 6,875.00 feet along the West line of said Block 70 to the point of beginning, containing **2,313.89 acres**, all as more particularly outlined on a plat on file in the Office of Mineral Resources, Department of Natural Resources. All bearings, distances and coordinates are based on Louisiana Coordinate System of 1927, (North or South Zone), where applicable.

NOTE: The above description of the Tract nominated for lease has been provided and corrected, where required, exclusively by the nomination party. Any mineral lease selected from this Tract and awarded by the Louisiana State Mineral Board shall be without warranty of any kind, either express, implied, or statutory, including, but not limited to, the implied warranties of merchantability and fitness for a particular purpose. Should the mineral lease awarded by the Louisiana State Mineral Board be subsequently modified, cancelled or abrogated due to the existence of conflicting leases, operating agreements, private claims or other future obligations or conditions which may affect all or any portion of the leased Tract, it shall not relieve the Lessee of the obligation to pay any bonus due thereon to the Louisiana State Mineral Board, nor shall the Louisiana State Mineral Board be obligated to refund any consideration

paid by the Lessor prior to such modification, cancellation, or abrogation, including, but not limited to, bonuses, rentals and royalties.

NOTE: The State of Louisiana does hereby reserve, and this lease shall be subject to, the imprescriptible right of surface use in the nature of a servitude in favor of the Department of Natural Resources, including its Offices and Commissions, for the sole purpose of implementing, constructing, servicing and maintaining approved coastal zone management and/or restoration projects. Utilization of any and all rights derived under this lease by the mineral lessee, its agents, successors or assigns, shall not interfere with nor hinder the reasonable surface use by the Department of Natural Resources, its Offices or Commissions, as herein above reserved.

NOTE: The Department of Wildlife and Fisheries has designated certain areas in the coastal waters of the State of Louisiana as Oyster Seed Bed Areas. The exact location of those Seed Bed Areas must be obtained from the Department of Wildlife and Fisheries and any work done under a mineral lease from the State of Louisiana may necessarily be conducted in conformity with the rules and regulations promulgated by the said Department of Wildlife and Fisheries for Oyster Seed Bed Areas.

Applicant: Energy Partners, Inc.

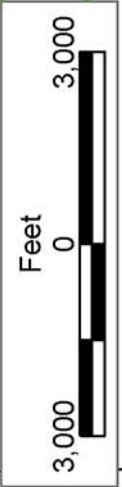
| Bidder | Cash Payment | Price/Acre | Rental | Oil | Gas | Other |
|--------|--------------|------------|--------|-----|-----|-------|
|        |              |            |        |     |     |       |
|        |              |            |        |     |     |       |
|        |              |            |        |     |     |       |
|        |              |            |        |     |     |       |



BLOCK CS0069

SL 16799

BLOCK BS0001



S.L. 17549

S.L. 16798

BLOCK CS0070

S.L. 16011

BLOCK MP0004

CHANDELEUR SOUND AREA

S.L. 16731

ST BERNARD PARISH

MAIN PASS AREA, REVISED

BLOCK CS0071

P.O.B.  
X=2,620,600.00  
Y=388,705.00

S.L. 17276

S.L. 17278

S.L. 17279

BLOCK MP0003



**TRACT 36222 - Portion of Block 2, Breton Sound Area, St. Bernard Parish, Louisiana**

All of the lands now or formerly constituting the beds and bottoms of all water bodies of every nature and description the title of which vests in the State of Louisiana, together with all islands arising therein and other lands formed by accretion or by reliction, where allowed by law, excepting tax adjudicated lands, and not presently under mineral lease on April 14, 2004, situated in St. Bernard Parish, Louisiana, and more particularly described as follows: Beginning at a point on the North line of Block 2, Breton Sound Area, having Coordinates of X = 2,657,475.00 and Y = 381,330.00; thence South 51 degrees 40 minutes 24 seconds East 9,401.04 feet to a point on the East line of said Block 2 having Coordinates of X = 2,664,850.00 and Y = 375,500.00; thence South 8,920.00 feet along the East line of said Block 2 to its Southeast corner having Coordinates of X = 2,664,850.00 and Y = 366,580.00; thence West 10,750.00 feet along the South line of said Block 2 to a point having Coordinates of X = 2,654,100.00 and Y = 366,580.00; thence North 6,300.00 feet to a point having Coordinates of X = 2,654,100.00 and Y = 372,880.00; thence East 3,375.00 feet to a point having Coordinates of X = 2,657,475.00 and Y = 372,880.00; thence North 8,450.00 feet to the point of beginning, containing approximately **2,491.86 acres**, all as more particularly outlined on a plat on file in the Office of Mineral Resources, Department of Natural Resources. All bearings, distances and coordinates are based on Louisiana Coordinate System of 1927, (North or South Zone), where applicable.

NOTE: The above description of the Tract nominated for lease has been provided and corrected, where required, exclusively by the nomination party. Any mineral lease selected from this Tract and awarded by the Louisiana State Mineral Board shall be without warranty of any kind, either express, implied, or statutory, including, but not limited to, the implied warranties of merchantability and fitness for a particular purpose. Should the mineral lease awarded by the Louisiana State Mineral Board be subsequently modified, cancelled or abrogated due to the existence of conflicting leases, operating agreements, private claims or other future obligations or conditions which may affect all or any portion of the leased Tract, it shall not relieve the Lessee of the obligation to pay any bonus due thereon to the Louisiana State Mineral Board, nor shall the Louisiana State Mineral Board be obligated to refund any consideration paid by the Lessor prior to such modification, cancellation, or abrogation, including, but not limited to, bonuses, rentals and royalties.

NOTE: The Office of Mineral Resources will require a minimum bonus of \$190 per acre and a minimum royalty of 22%.

NOTE: The State of Louisiana does hereby reserve, and this lease shall be subject to, the imprescriptible right of surface use in the nature of a servitude in favor of the Department of Natural Resources, including its Offices and Commissions, for the sole purpose of implementing,

constructing, servicing and maintaining approved coastal zone management and/or restoration projects. Utilization of any and all rights derived under this lease by the mineral lessee, its agents, successors or assigns, shall not interfere with nor hinder the reasonable surface use by the Department of Natural Resources, its Offices or Commissions, as herein above reserved.

Applicant: Fourtune Resources

| Bidder | Cash Payment | Price/Acre | Rental | Oil | Gas | Other |
|--------|--------------|------------|--------|-----|-----|-------|
|        |              |            |        |     |     |       |
|        |              |            |        |     |     |       |
|        |              |            |        |     |     |       |
|        |              |            |        |     |     |       |



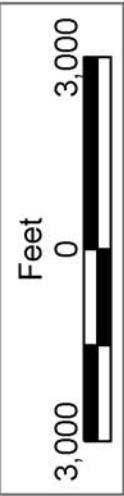
BLOCK CS0067

CHANDELEUR SOUND AREA

BRETON SOUND AREA

BLOCK BS0003

BLOCK BS0014



BLOCK CS0068

P.O.B.  
X=2,657,475.00  
Y=381,330.00

ST BERNARD PARISH

BLOCK BS0002

BLOCK BS0015



SL 8669

**TRACT 36223 - Lafourche Parish, Louisiana**

All of the lands now or formerly constituting the beds and bottoms of all water bodies of every nature and description the title of which vests in the State of Louisiana, together with all islands arising therein and other lands formed by accretion or by reliction, where allowed by law, excepting tax adjudicated lands, and not presently under mineral lease on April 14, 2004, situated in Lafourche Parish, Louisiana, and more particularly described as follows: Beginning at a point having Coordinates of X = 2,375,866.00 and Y = 296,905.00; Thence North 19 degrees 22 minutes 21 seconds West 2,493.16 feet to a point having Coordinates of X = 2,375,039.00 and Y = 299,257.00; Thence North 72 degrees 18 minutes 32 seconds East 2,655.59 feet to a point having Coordinates of X = 2,377,569.00 and Y = 300,064.00; Thence South 19 degrees 31 minutes 34 seconds East 2,474.30 feet to a point having Coordinates of X = 2,378,396.00 and Y = 297,732.00; Thence South 71 degrees 53 minutes 55 seconds West 2,661.73 feet to the point of beginning containing approximately **151.54 acres**, all as more particularly outlined on a plat on file in the Office of Mineral Resources, Department of Natural Resources. All bearings, distances and coordinates are based on Louisiana Coordinate System of 1927, (North or South Zone), where applicable.

NOTE: The above description of the Tract nominated for lease has been provided and corrected, where required, exclusively by the nomination party. Any mineral lease selected from this Tract and awarded by the Louisiana State Mineral Board shall be without warranty of any kind, either express, implied, or statutory, including, but not limited to, the implied warranties of merchantability and fitness for a particular purpose. Should the mineral lease awarded by the Louisiana State Mineral Board be subsequently modified, cancelled or abrogated due to the existence of conflicting leases, operating agreements, private claims or other future obligations or conditions which may affect all or any portion of the leased Tract, it shall not relieve the Lessee of the obligation to pay any bonus due thereon to the Louisiana State Mineral Board, nor shall the Louisiana State Mineral Board be obligated to refund any consideration paid by the Lessor prior to such modification, cancellation, or abrogation, including, but not limited to, bonuses, rentals and royalties.

NOTE: The State of Louisiana does hereby reserve, and this lease shall be subject to, the imprescriptible right of surface use in the nature of a servitude in favor of the Department of Natural Resources, including its Offices and Commissions, for the sole purpose of implementing, constructing, servicing and maintaining approved coastal zone management and/or restoration projects. Utilization of any and all rights derived under this lease by the mineral lessee, its agents, successors or assigns, shall not interfere with nor hinder the reasonable surface use by the Department of Natural Resources, its Offices or Commissions, as herein above reserved.

NOTE: The Department of Wildlife and Fisheries has designated certain areas in the coastal waters of the State of Louisiana as Oyster Seed Bed Areas. The exact location of those Seed Bed Areas must be obtained from the Department of Wildlife and Fisheries and any work done under a mineral lease from the State of Louisiana may necessarily be conducted in conformity with the rules and regulations promulgated by the said Department of Wildlife and Fisheries for Oyster Seed Bed Areas.

Applicant: White Resources

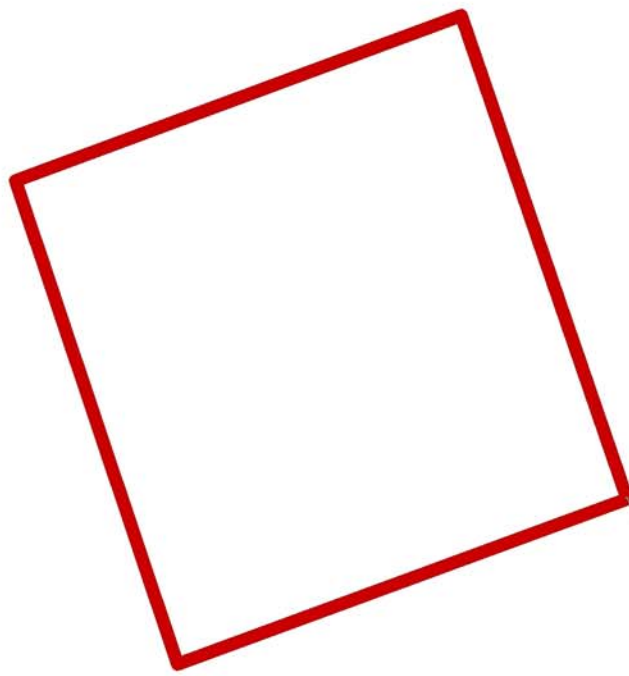
| Bidder | Cash Payment | Price/Acre | Rental | Oil | Gas | Other |
|--------|--------------|------------|--------|-----|-----|-------|
|        |              |            |        |     |     |       |
|        |              |            |        |     |     |       |
|        |              |            |        |     |     |       |
|        |              |            |        |     |     |       |



JEFFERSON PARISH



LITTLE LAKE



P.O.B.  
X=2,375,866.00  
Y=296,905.00

LAFOURCHE PARISH