

TRACT 36231 - St. Martin and St. Mary Parishes, Louisiana

All lands now or formerly constituting the beds and bottoms of water bodies of whatever description and nature owned by the State of Louisiana and located within the geographical boundaries of the (Attakapas Island WMA) and not presently under mineral lease by the State of Louisiana as of April 14, 2004, the area being set forth as follows: Beginning at a Point having Coordinates of X = 1,981,390.00 and Y = 456,230.00; Thence East approximately 1,139 feet to a point on the Eastern boundary of the Attakapas Island Wildlife Management Area having a Coordinate of Y = 456,230.00; Thence Southeasterly along the Eastern Boundary of said Attakapas Island Wildlife Management Area to a point being the Northeast Corner of State Lease No. 17837 and the Northwest corner of State Lease No. 17836 having a Coordinate of Y = 454,256.07; Thence West approximately 770 feet to a point being the Northwest corner of said State Lease No. 17837 having Coordinates of X = 1,982,939.27 and Y = 454,256.07; Thence South 9,337.71 feet along the Western line of said State Lease No. 17837 to its Southwest corner having Coordinates of X = 1,982,939.27 and Y = 444,918.36; Thence continuing South 4,494.63 feet to a point having Coordinates of X = 1,982,939.27 and Y = 440,423.73; Thence West 2,049.27 feet to a point being the Northeast corner of State Lease No. 5706, as amended, having Coordinates of X = 1,980,890.00 and Y = 440,423.73; Thence continuing West 7,557.00 feet along the North line of said State Lease No. 5706, to its Northernmost Northwest corner having Coordinates of X = 1,973,333.00 and Y = 440,423.73; Thence continuing West approximately 4,714 feet to a point on the Northeast line of State Lease No. 17838 having a Coordinate of Y = 440,423.73; Thence Northwesterly along said State Lease No. 17838 to a common corner of said State Lease No. 17838 and State Lease No. 17839 having a Coordinate of X = 1,965,410.26; Thence North approximately 858 feet along the Eastern most line of said State Lease No. 17839 to its Northeast corner having Coordinates of X = 1,965,410.26 and Y = 445,573.11; Thence North 426.89 feet to a point having Coordinates of X = 1,965,410.26 and Y = 446,000.00; Thence East 15,979.74 feet to a point having Coordinates of X = 1,981,390.00 and Y = 446,000.00; Thence North 10,230.00 feet to the point of beginning, **LESS AND EXCEPT** any portion lying outside of the boundaries of the Attakapas Island Wildlife Management Area, containing approximately **2,458 acres**, all as more particularly outlined on a plat on file in the Office of Mineral Resources, Department of Natural Resources. All bearings, distances and coordinates are based on Louisiana Coordinate System of 1927, (North or South Zone).

NOTE: The above description of the Tract nominated for lease has been provided and corrected, where required, exclusively by the nomination party. Any mineral lease selected from this Tract and awarded by the Louisiana State Mineral Board shall be without warranty of any kind, either express, implied, or statutory, including, but not limited to, the implied warranties of merchantability and fitness for a particular purpose. Should the mineral lease awarded by the Louisiana State Mineral Board be subsequently modified, cancelled or abrogated due to the

existence of conflicting leases, operating agreements, private claims or other future obligations or conditions which may affect all or any portion of the leased Tract, it shall not relieve the Lessee of the obligation to pay any bonus due thereon to the Louisiana State Mineral Board, nor shall the Louisiana State Mineral Board be obligated to refund any consideration paid by the Lessor prior to such modification, cancellation, or abrogation, including, but not limited to, bonuses, rentals and royalties.

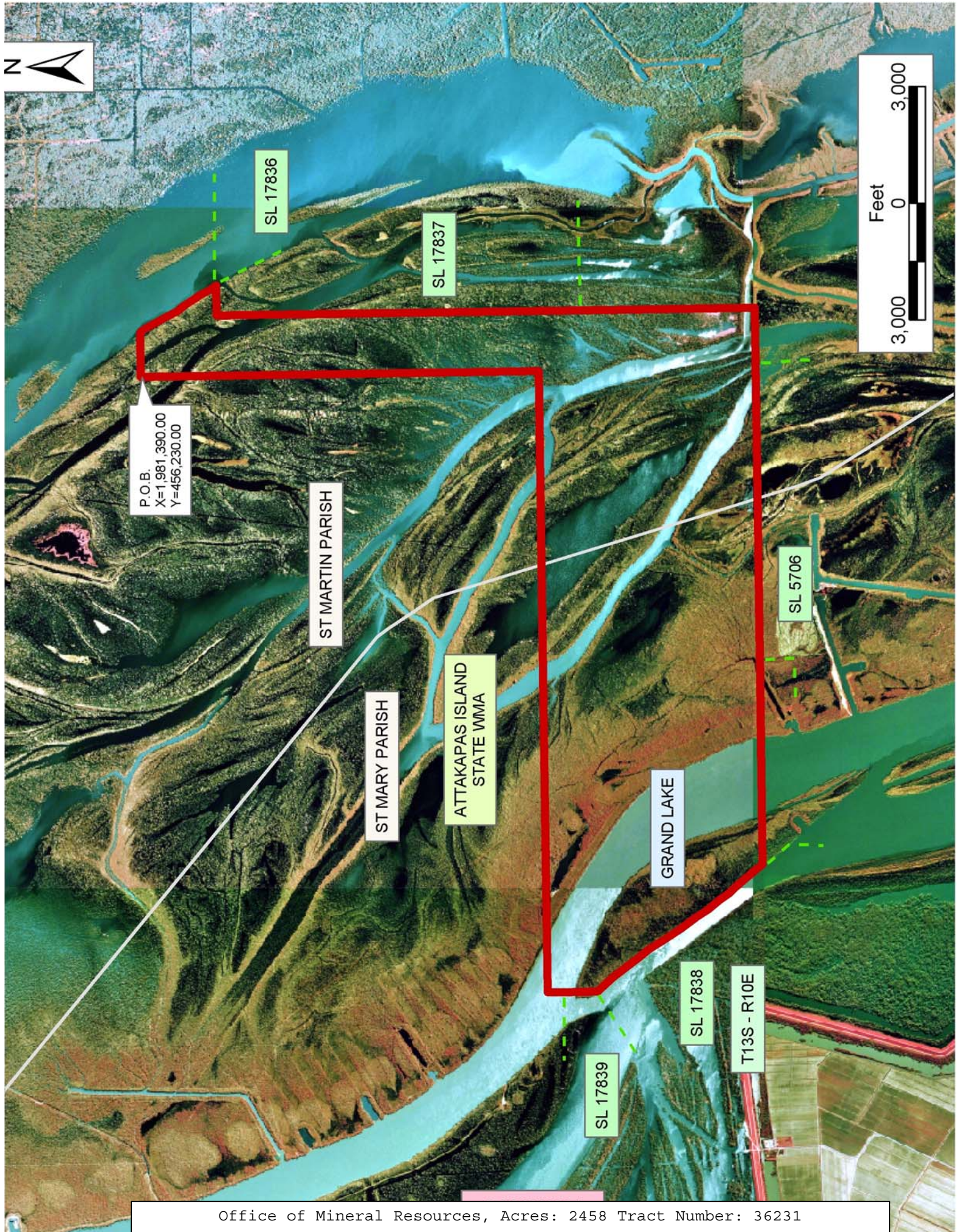
NOTE: This tract is located within the boundaries of a wildlife management area or refuge and any operations conducted thereon in conjunction with this mineral lease may be subject to rules and regulations promulgated by the Department of Wildlife and Fisheries for the protection of fish, birds and other wildlife including, but not necessarily limited to, the following:

1. No activities will be allowed without written authorization from the Louisiana Department of Wildlife and Fisheries.
2. Projects will be evaluated on a case by case basis. Modifications to projects may be required including, but not limited to, access routes, spoil placement, well sites, flow lines and other appurtenant structures.
3. Mitigation will be required to offset avoidable wetland impacts.
4. Removal of all structures, facilities, and equipment will be required within 120 days of abandonment unless otherwise agreed to by the Department of Wildlife and Fisheries.
5. Prior to submitting applications for wetland permits to Federal and State permitting agencies the lease holder shall coordinate project details with the Louisiana Department of Wildlife and Fisheries, Fur and Refuge Division. Contact person for the Department will be Mike Windham at (504) 568-5886
6. No activities will be allowed during the hunting season unless approved by the department.
7. Compliance with the said WMA regulations will be required unless otherwise

NOTE: The State of Louisiana does hereby reserve, and this lease shall be subject to, the imprescriptible right of surface use in the nature of a servitude in favor of the Department of Natural Resources, including its Offices and Commissions, for the sole purpose of implementing, constructing, servicing and maintaining approved coastal zone management and/or restoration projects. Utilization of any and all rights derived under this lease by the mineral lessee, its agents, successors or assigns, shall not interfere with nor hinder the reasonable surface use by the Department of Natural Resources, its Offices or Commissions, as herein above reserved.

Applicant: Grady Oil & Gas

Bidder	Cash Payment	Price/Acre	Rental	Oil	Gas	Other



P.O.B.
X=1,981,390.00
Y=456,230.00

SL 17836

SL 17837

ST MARTIN PARISH

ST MARY PARISH

ATTAKAPAS ISLAND
STATE WMA

GRAND LAKE

SL 5706

SL 17838

T13S - R10E

SL 17839



TRACT 36232 - St. Martin and St. Mary Parishes, Louisiana

All lands now or formerly constituting the beds and bottoms of water bodies of whatever description and nature owned by the State of Louisiana and located within the geographical boundaries of the (Attakapas Island WMA) and not presently under mineral lease by the State of Louisiana as of April 14, 2004, the area being set forth as follows: Beginning at a point having Coordinates of X = 1,970,750.00 and Y = 446,000.00; thence North 10,230.00 feet to a point having Coordinates of X = 1,970,750.00 and Y = 456,230.00; thence East 10,640.00 feet to a point having Coordinates of X = 1,981,390.00 and Y = 456,230.00; thence South 10,230.00 feet to a point having Coordinates of X = 1,981,390.00 and Y = 446,000.00; thence West 10,640.00 feet to the point of beginning, **LESS AND EXCEPT** any portion lying outside of the boundaries of the Attakapas Island Wildlife Management Area, containing approximately **2,498.79 acres**, all as more particularly outlined on a plat on file in the Office of Mineral Resources, Department of Natural Resources. All bearings, distances and coordinates are based on Louisiana Coordinate System of 1927, (North or South Zone).

NOTE: The above description of the Tract nominated for lease has been provided and corrected, where required, exclusively by the nomination party. Any mineral lease selected from this Tract and awarded by the Louisiana State Mineral Board shall be without warranty of any kind, either express, implied, or statutory, including, but not limited to, the implied warranties of merchantability and fitness for a particular purpose. Should the mineral lease awarded by the Louisiana State Mineral Board be subsequently modified, cancelled or abrogated due to the existence of conflicting leases, operating agreements, private claims or other future obligations or conditions which may affect all or any portion of the leased Tract, it shall not relieve the Lessee of the obligation to pay any bonus due thereon to the Louisiana State Mineral Board, nor shall the Louisiana State Mineral Board be obligated to refund any consideration paid by the Lessor prior to such modification, cancellation, or abrogation, including, but not limited to, bonuses, rentals and royalties.

NOTE: This tract is located within the boundaries of a wildlife management area or refuge and any operations conducted thereon in conjunction with this mineral lease may be subject to rules and regulations promulgated by the Department of Wildlife and Fisheries for the protection of fish, birds and other wildlife including, but not necessarily limited to, the following:

1. No activities will be allowed without written authorization from the Louisiana Department of Wildlife and Fisheries.
2. Projects will be evaluated on a case by case basis. Modifications to projects may be required including, but not limited to, access routes, spoil placement, well sites, flow lines and other appurtenant structures.
3. Mitigation will be required to offset avoidable wetland impacts.

4. Removal of all structures, facilities, and equipment will be required within 120 days of abandonment unless otherwise agreed to by the Department of Wildlife and Fisheries.
5. Prior to submitting applications for wetland permits to Federal and State permitting agencies the lease holder shall coordinate project details with the Louisiana Department of Wildlife and Fisheries, Fur and Refuge Division. Contact person for the Department will be Mike Windham at (504) 568-5886
6. No activities will be allowed during the hunting season unless approved by the department.
7. Compliance with the said WMA regulations will be required unless otherwise

NOTE: The State of Louisiana does hereby reserve, and this lease shall be subject to, the imprescriptible right of surface use in the nature of a servitude in favor of the Department of Natural Resources, including its Offices and Commissions, for the sole purpose of implementing, constructing, servicing and maintaining approved coastal zone management and/or restoration projects. Utilization of any and all rights derived under this lease by the mineral lessee, its agents, successors or assigns, shall not interfere with nor hinder the reasonable surface use by the Department of Natural Resources, its Offices or Commissions, as herein above reserved.

Applicant: Grady Oil & Gas

Bidder	Cash Payment	Price/Acre	Rental	Oil	Gas	Other



GRAND LAKE

ST MARTIN PARISH

ATTAKAPAS ISLAND
STATE WMA

T13S - R10E

ST MARY PARISH

P.O.B.
X=1,970,750.00
Y=446,000.00

TRACT 36233 - St. Martin and St. Mary Parishes, Louisiana

All lands now or formerly constituting the beds and bottoms of water bodies of whatever description and nature owned by the State of Louisiana and located within the geographical boundaries of the (Attakapas Island WMA) and not presently under mineral lease by the State of Louisiana as of April 14, 2004, the area being set forth as follows: Beginning at a point having Coordinates of X = 1,970,750.00 and Y = 450,835.00; thence West 14,550.00 feet to a point on the East line of State Lease No. 14954, as amended, having Coordinates of X = 1,956,200.00 and Y = 450,835.00; thence North 665.00 feet along the East line of said State Lease No. 14954 to its Northeast corner, also being the Southeast corner of State Lease No. 14915, as amended, having Coordinates of X = 1,956,200.00 and Y = 451,500.00; thence North 2,084.32 feet along the East line of said State Lease No. 14915 to its Northeast corner, also being a point on the South line of State Lease No. 16310 having Coordinates of X = 1,956,200.00 and Y = 453,584.32; thence along the boundary of said State Lease No. 16310 the following courses: East 6,874.49 feet and North 15.68 feet to the Northeast corner of said State Lease No. 16310, also being the Southeast corner of State Lease No. 14916 having Coordinates of X = 1,963,074.49 and Y = 453,600.00; thence North 2,069.56 feet along the East line of said State Lease No. 14916 to its Northeast corner, also being the Southeast corner of State Lease No. 14522 having Coordinates of X = 1,963,074.49 and Y = 455,669.56; thence North 560.44 feet along the East line of said State Lease No. 14522 to a point having Coordinates of X = 1,963,074.49 and Y = 456,230.00; thence East 7,675.51 feet to a point having Coordinates of X = 1,970,750.00 and Y = 456,230.00; thence South 5,395.00 feet to the point of beginning, **LESS AND EXCEPT** any portion lying outside of the boundaries of the Attakapas Island Wildlife Management Area, containing approximately **1,384.52 acres**, all as more particularly outlined on a plat on file in the Office of Mineral Resources, Department of Natural Resources. All bearings, distances and coordinates are based on Louisiana Coordinate System of 1927, (North or South Zone).

NOTE: The above description of the Tract nominated for lease has been provided and corrected, where required, exclusively by the nomination party. Any mineral lease selected from this Tract and awarded by the Louisiana State Mineral Board shall be without warranty of any kind, either express, implied, or statutory, including, but not limited to, the implied warranties of merchantability and fitness for a particular purpose. Should the mineral lease awarded by the Louisiana State Mineral Board be subsequently modified, cancelled or abrogated due to the existence of conflicting leases, operating agreements, private claims or other future obligations or conditions which may affect all or any portion of the leased Tract, it shall not relieve the Lessee of the obligation to pay any bonus due thereon to the Louisiana State Mineral Board, nor shall the Louisiana State Mineral Board be obligated to refund any consideration paid by the Lessor prior to such modification, cancellation, or abrogation, including, but not limited to, bonuses, rentals and royalties.

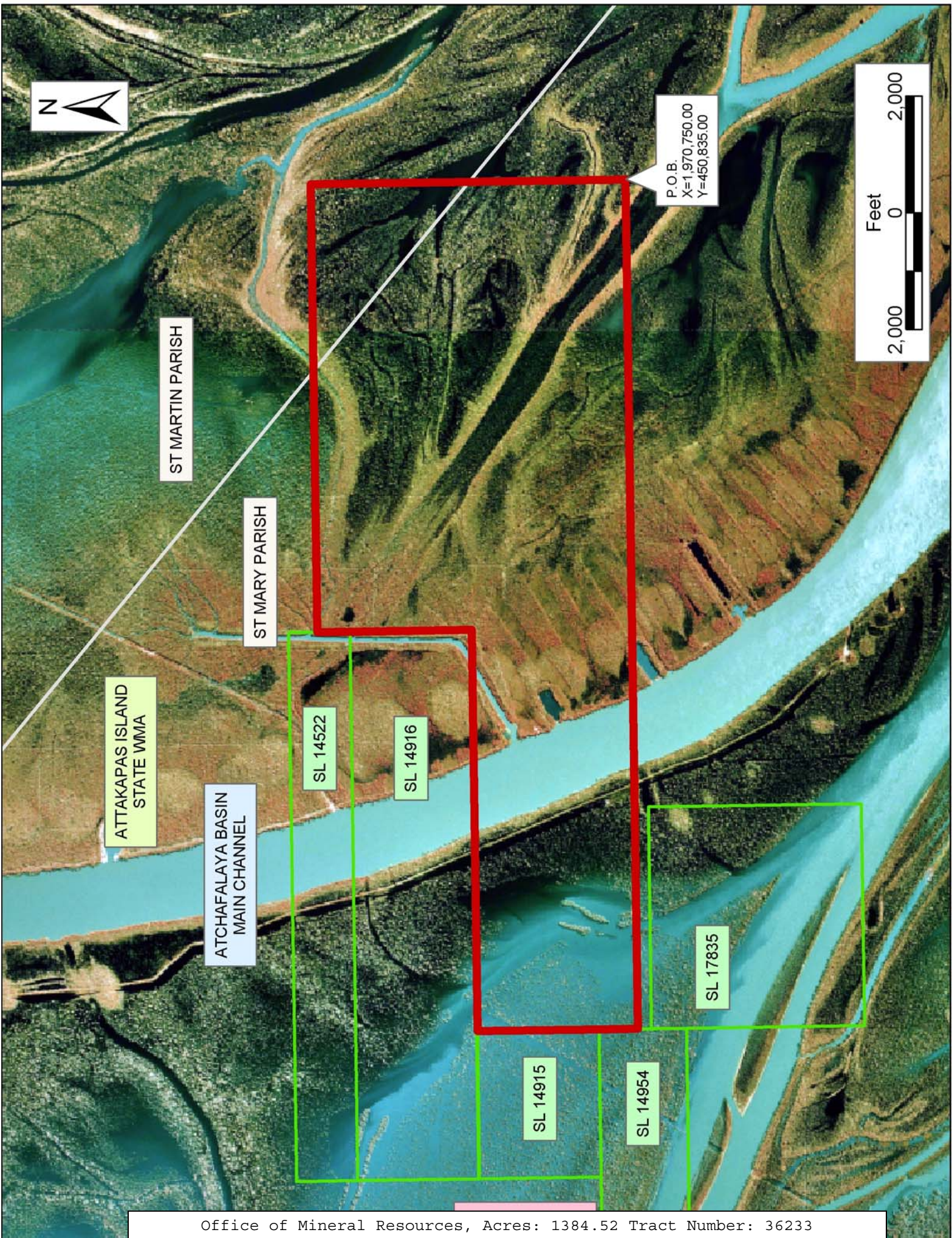
NOTE: This tract is located within the boundaries of a wildlife management area or refuge and any operations conducted thereon in conjunction with this mineral lease may be subject to rules and regulations promulgated by the Department of Wildlife and Fisheries for the protection of fish, birds and other wildlife including, but not necessarily limited to, the following:

1. No activities will be allowed without written authorization from the Louisiana Department of Wildlife and Fisheries.
2. Projects will be evaluated on a case by case basis. Modifications to projects may be required including, but not limited to, access routes, spoil placement, well sites, flow lines and other appurtenant structures.
3. Mitigation will be required to offset avoidable wetland impacts.
4. Removal of all structures, facilities, and equipment will be required within 120 days of abandonment unless otherwise agreed to by the Department of Wildlife and Fisheries.
5. Prior to submitting applications for wetland permits to Federal and State permitting agencies the lease holder shall coordinate project details with the Louisiana Department of Wildlife and Fisheries, Fur and Refuge Division. Contact person for the Department will be Mike Windham at (504) 568-5886
6. No activities will be allowed during the hunting season unless approved by the department.
7. Compliance with the said WMA regulations will be required unless otherwise

NOTE: The State of Louisiana does hereby reserve, and this lease shall be subject to, the imprescriptible right of surface use in the nature of a servitude in favor of the Department of Natural Resources, including its Offices and Commissions, for the sole purpose of implementing, constructing, servicing and maintaining approved coastal zone management and/or restoration projects. Utilization of any and all rights derived under this lease by the mineral lessee, its agents, successors or assigns, shall not interfere with nor hinder the reasonable surface use by the Department of Natural Resources, its Offices or Commissions, as herein above reserved.

Bidder	Cash Payment	Price/Acre	Rental	Oil	Gas	Other

Applicant: Grady Oil & Gas



P.O.B.
X=1,970,750.00
Y=450,835.00



ST MARTIN PARISH

ST MARY PARISH

ATTAKAPAS ISLAND
STATE WMA

ATCHAFALAYA BASIN
MAIN CHANNEL

SL 14522

SL 14916

SL 17835

SL 14915

SL 14954

TRACT 36234 - St. Mary Parish, Louisiana

All lands now or formerly constituting the beds and bottoms of water bodies of whatever description and nature owned by the State of Louisiana and located within the geographical boundaries of the (Attakapas Island WMA) and not presently under mineral lease by the State of Louisiana as of April 14, 2004, the area being set forth as follows: Beginning at a point having Coordinates of X = 1,970,750.00 and Y = 446,000.00; thence West 5,339.74 feet to a point having Coordinates of X = 1,965,410.26 and Y = 446,000.00; thence South 426.89 feet to the Northeast corner of State Lease No. 17839 having Coordinates of X = 1,965,410.26 and Y = 445,573.11; thence West 5,275.26 feet along the North line of said State Lease No. 17839 to its Northwest corner having Coordinates of X = 1,960,135.00 and Y = 445,573.11; thence West 3,935.00 feet to a point having Coordinates of X = 1,956,200.00 and Y = 445,573.11; thence North 1,176.89 feet to the Southeast corner of State Lease No. 16859 having Coordinates of X = 1,956,200.00 and Y = 446,750.00; thence North 200.00 feet along the East line of said State Lease No. 16859 to a point, also being the Southwest corner of State Lease No.17835 having Coordinates of X = 1,956,200.00 and Y = 446,950.00; thence along the boundary of said State Lease No. 17835 the following courses: East 3,800.00 feet, North 3,650.00 feet and West 3,800.00 feet to the Northwest corner of said State Lease No. 17835, also being a point on the East line of State Lease No. 14954, as amended, having Coordinates of X = 1,956,200.00 and Y = 450,600.00; thence North 235.00 feet along the East line of said State Lease No. 14954 to a point having Coordinates of X = 1,956,200.00 and Y = 450,835.00; thence East 14,550.00 feet to a point having Coordinates of X = 1,970,750.00 and Y = 450,835.00; thence South 4,835.00 feet to the point beginning, **LESS AND EXCEPT** any portion lying outside of the boundaries of the Attakapas Island Wildlife Management Area, containing approximately **1,386.85 acres**, all as more particularly outlined on a plat on file in the Office of Mineral Resources, Department of Natural Resources. All bearings, distances and coordinates are based on Louisiana Coordinate System of 1927, (North or South Zone).

NOTE: The above description of the Tract nominated for lease has been provided and corrected, where required, exclusively by the nomination party. Any mineral lease selected from this Tract and awarded by the Louisiana State Mineral Board shall be without warranty of any kind, either express, implied, or statutory, including, but not limited to, the implied warranties of merchantability and fitness for a particular purpose. Should the mineral lease awarded by the Louisiana State Mineral Board be subsequently modified, cancelled or abrogated due to the existence of conflicting leases, operating agreements, private claims or other future obligations or conditions which may affect all or any portion of the leased Tract, it shall not relieve the Lessee of the obligation to pay any bonus due thereon to the Louisiana State Mineral Board, nor shall the Louisiana State Mineral Board be obligated to refund any consideration paid by the Lessor prior to such modification, cancellation, or abrogation, including, but not limited to, bonuses, rentals and royalties.

NOTE: This tract is located within the boundaries of a wildlife management area or refuge and any operations conducted thereon in conjunction with this mineral lease may be subject to rules and regulations promulgated by the Department of Wildlife and Fisheries for the protection of fish, birds and other wildlife including, but not necessarily limited to, the following:

1. No activities will be allowed without written authorization from the Louisiana Department of Wildlife and Fisheries.
2. Projects will be evaluated on a case by case basis. Modifications to projects may be required including, but not limited to, access routes, spoil placement, well sites, flow lines and other appurtenant structures.
3. Mitigation will be required to offset avoidable wetland impacts.
4. Removal of all structures, facilities, and equipment will be required within 120 days of abandonment unless otherwise agreed to by the Department of Wildlife and Fisheries.
5. Prior to submitting applications for wetland permits to Federal and State permitting agencies the lease holder shall coordinate project details with the Louisiana Department of Wildlife and Fisheries, Fur and Refuge Division. Contact person for the Department will be Mike Windham at (504) 568-5886
6. No activities will be allowed during the hunting season unless approved by the department.
7. Compliance with the said WMA regulations will be required unless otherwise

NOTE: The State of Louisiana does hereby reserve, and this lease shall be subject to, the imprescriptible right of surface use in the nature of a servitude in favor of the Department of Natural Resources, including its Offices and Commissions, for the sole purpose of implementing, constructing, servicing and maintaining approved coastal zone management and/or restoration projects. Utilization of any and all rights derived under this lease by the mineral lessee, its agents, successors or assigns, shall not interfere with nor hinder the reasonable surface use by the Department of Natural Resources, its Offices or Commissions, as herein above reserved.

Applicant: Grady Oil & Gas

Bidder	Cash Payment	Price/Acre	Rental	Oil	Gas	Other



ST MARY PARISH

ATTAKAPAS ISLAND
STATE WMA

ATCHAFALAYA BASIN
MAIN CHANNEL

P.O.B.
X=1,970,750.00
Y=446,000.00



T13S - R10E

SL 17839

GRAND LAKE

SL 17835

SL 14954

SL 16859