

TRACT 35382 - Jefferson Parish, Louisiana

All of the lands now or formerly constituting the beds and bottoms of all water bodies of every nature and description, and all islands and other lands formed by accretion, where allowed by law, or by reliction, and excepting tax adjudicated lands, belonging to the State of Louisiana and not presently under mineral lease on April 9, 2003, situated in Jefferson Parish, Louisiana, and more particularly described as follows: Beginning at a point having Coordinates of X = 2,405,011.82 and Y = 316,390.00; thence South 12,476.12 feet to a point having Coordinates of X = 2,405,011.82 and Y = 303,913.88; thence South 68 degrees 44 minutes 48 seconds West 1,835.26 feet to a point having Coordinates of X = 2,403,301.38 and Y = 303,248.61; thence West 4,232.67 feet to a point having Coordinates of X = 2,399,068.71 and Y = 303,248.61; thence North 13,141.39 feet to a point having Coordinates of X = 2,399,068.71 and Y = 316,390.00 being a point on the South line of State Lease No. 17264; thence East 4,985.29 feet along the South line of said State Lease No. 17264 to its Southeast corner having Coordinates of X = 2,404,054.00 and Y = 316,390.00; thence East 957.82 feet to the point of beginning, containing approximately **740 acres**, all as more particularly outlined on a plat on file in the Office of Mineral Resources, Department of Natural Resources, as provided by the applicant. All bearings, distances and coordinates are based on Louisiana Coordinate System of 1927, (North or South Zone), where applicable.

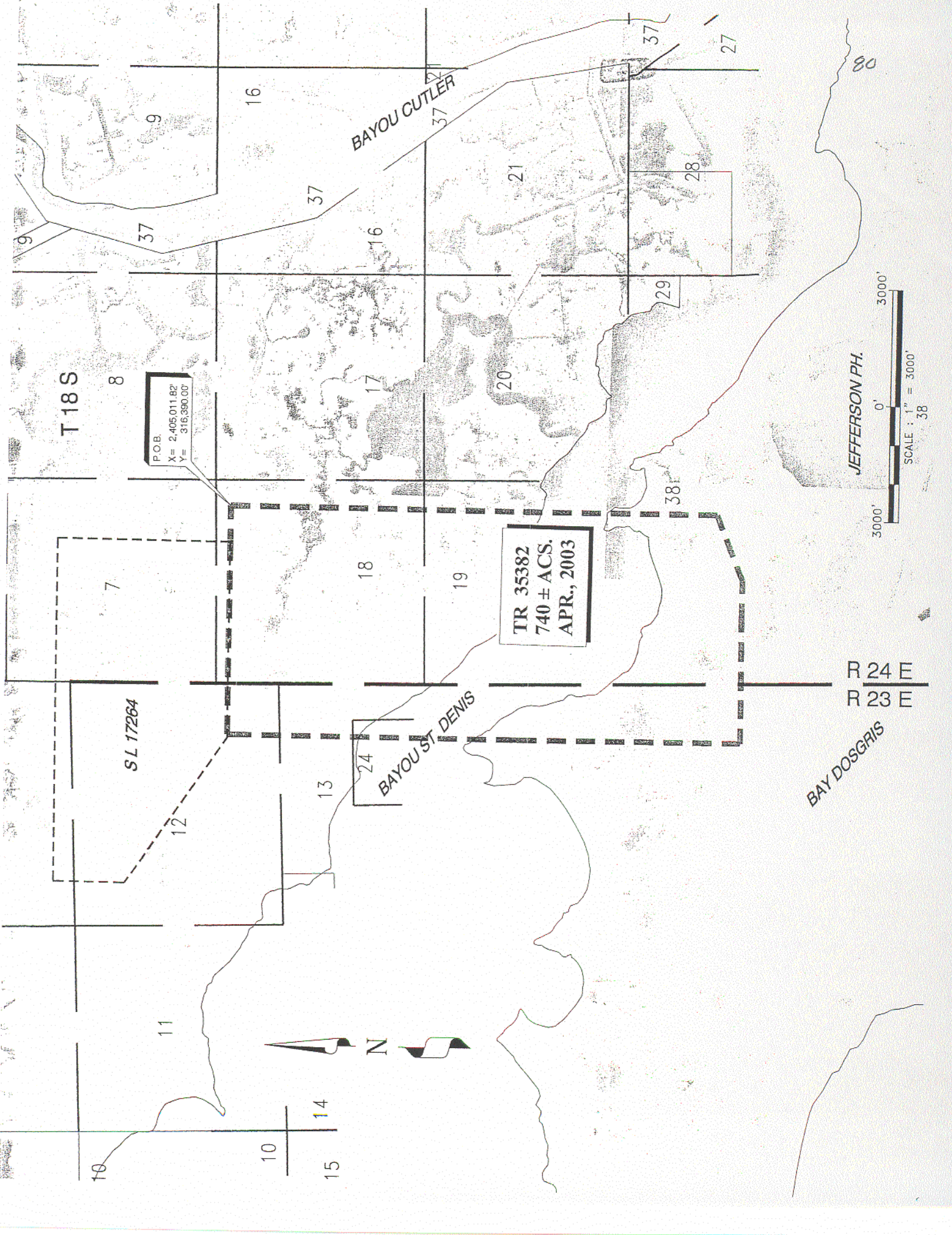
NOTE: The above description of the Tract nominated for lease has been provided and corrected, where required, exclusively by the nomination party. Any mineral lease selected from this Tract and awarded by the Louisiana State Mineral Board shall be without warranty of any kind, either express, implied, or statutory, including, but not limited to, the implied warranties of merchantability and fitness for a particular purpose. Should the mineral lease awarded by the Louisiana State Mineral Board be subsequently modified, cancelled or abrogated due to the existence of conflicting leases, operating agreements, private claims or other future obligations or conditions which may affect all or any portion of the leased Tract, it shall not relieve the Lessee of the obligation to pay any bonus due thereon to the Louisiana State Mineral Board, nor shall the Louisiana State Mineral Board be obligated to refund any consideration paid by the Lessor prior to such modification, cancellation, or abrogation, including, but not limited to, bonuses, rentals and royalties.

NOTE: The Department of Wildlife and Fisheries has designated certain areas in the coastal waters of the State of Louisiana as Oyster Seed Bed Areas. The exact location of those Seed Bed Areas must be obtained from the Department of Wildlife and Fisheries and any work done under a mineral

lease from the State of Louisiana may necessarily be conducted in conformity with the rules and regulations promulgated by the said Department of Wildlife and Fisheries for Oyster Seed Bed Areas.

NOTE: The State of Louisiana does hereby reserve, and this lease shall be subject to, the imprescriptible right of surface use in the nature of a servitude in favor of the Department of Natural Resources, including its Offices and Commissions, for the sole purpose of implementing, constructing, servicing and maintaining approved coastal zone management and/or restoration projects. Utilization of any and all rights derived under this lease by the mineral lessee, its agents, successors or assigns, shall not interfere with nor hinder the reasonable surface use by the Department of Natural Resources, its Offices or Commissions, as herein above reserved.

Applicant: Cypress Energy Corporation



T 18 S

8

POB.
X= 2,405,011.82
Y= 316,390.00

7

SL 17264

11

10

10

15

13

12

18

19

BAYOU ST DENIS

24

17

20

TR 35382
740 ± ACS.
APR., 2003

BAYOU CUTLER

21

37

16

16

9

37

37

37

27

29

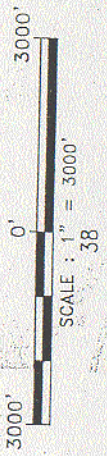
28

38

R 24 E
R 23 E

BAY DOSGRIS

JEFFERSON PH.



TRACT 35383 - Jefferson Parish, Louisiana

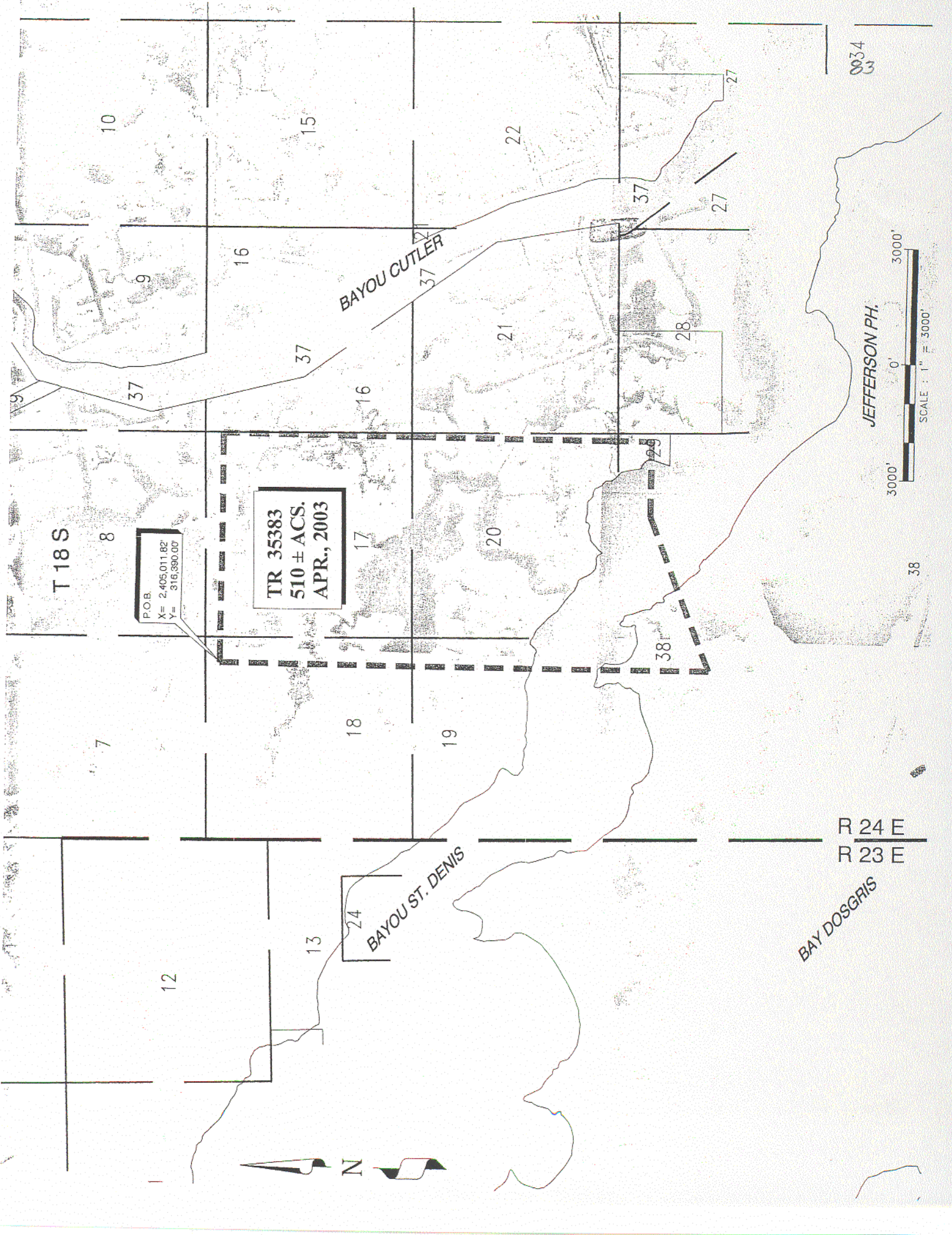
All of the lands now or formerly constituting the beds and bottoms of all water bodies of every nature and description, and all islands and other lands formed by accretion, where allowed by law, or by reliction, and excepting tax adjudicated lands, belonging to the State of Louisiana and not presently under mineral lease on April 9, 2003, situated in Jefferson Parish, Louisiana, and more particularly described as follows: Beginning at a point having Coordinates of X = 2,405,011.82 and Y = 316,390.00; thence East 5,943.10 feet to a point having Coordinates of X = 2,410,954.92 and Y = 316,390.00; thence South 10,931.93 feet to a point having Coordinates of X = 2,410,954.92 and Y = 305,458.07; hence West 1,972.89 feet to a point having Coordinates of X = 2,408,982.03 and Y = 305,458.07; thence South 68 degrees 44 minutes 48 seconds West 4,259.94 feet to a point having Coordinates of X = 2,405,011.82 and Y = 303,913.88; thence North 12,476.12 feet to the point of beginning, containing approximately **510 acres**, all as more particularly outlined on a plat on file in the Office of Mineral Resources, Department of Natural Resources, as provided by the applicant. All bearings, distances and coordinates are based on Louisiana Coordinate System of 1927, (North or South Zone), where applicable.

NOTE: The above description of the Tract nominated for lease has been provided and corrected, where required, exclusively by the nomination party. Any mineral lease selected from this Tract and awarded by the Louisiana State Mineral Board shall be without warranty of any kind, either express, implied, or statutory, including, but not limited to, the implied warranties of merchantability and fitness for a particular purpose. Should the mineral lease awarded by the Louisiana State Mineral Board be subsequently modified, cancelled or abrogated due to the existence of conflicting leases, operating agreements, private claims or other future obligations or conditions which may affect all or any portion of the leased Tract, it shall not relieve the Lessee of the obligation to pay any bonus due thereon to the Louisiana State Mineral Board, nor shall the Louisiana State Mineral Board be obligated to refund any consideration paid by the Lessor prior to such modification, cancellation, or abrogation, including, but not limited to, bonuses, rentals and royalties.

NOTE: The Department of Wildlife and Fisheries has designated certain areas in the coastal waters of the State of Louisiana as Oyster Seed Bed Areas. The exact location of those Seed Bed Areas must be obtained from the Department of Wildlife and Fisheries and any work done under a mineral lease from the State of Louisiana may necessarily be conducted in conformity with the rules and regulations promulgated by the said Department of Wildlife and Fisheries for Oyster Seed Bed Areas.

NOTE: The State of Louisiana does hereby reserve, and this lease shall be subject to, the imprescriptible right of surface use in the nature of a servitude in favor of the Department of Natural Resources, including its Offices and Commissions, for the sole purpose of implementing, constructing, servicing and maintaining approved coastal zone management and/or restoration projects. Utilization of any and all rights derived under this lease by the mineral lessee, its agents, successors or assigns, shall not interfere with nor hinder the reasonable surface use by the Department of Natural Resources, its Offices or Commissions, as herein above reserved.

Applicant: Cypress Energy Corporation



T 18 S

7

8

10

12

13

18

17

16

37

16

15

20

21

22

38

29

28

37

27

27

R 24 E
R 23 E

BAYOU ST. DENIS

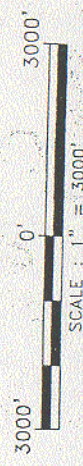
BAYOU CUTLER

JEFFERSON PH.

BAY DOSGRIS

P.O.B.
X= 2,405,011.82
Y= 316,390.00

TR 35383
510 ± ACS.
APR., 2003



38

0034
3

TRACT 35384 - Jefferson Parish, Louisiana

All of the lands now or formerly constituting the beds and bottoms of all water bodies of every nature and description, and all islands and other lands formed by accretion, where allowed by law, or by reliction, and excepting tax adjudicated lands, belonging to the State of Louisiana and not presently under mineral lease on April 9, 2003, situated in Jefferson Parish, Louisiana, and more particularly described as follows: Beginning at a point having Coordinates of X = 2,410,954.92 and Y = 295,248.61; thence West 8,586.21 feet to a point having Coordinates of X = 2,402,368.71 and Y = 295,248.61; thence North 8,000.00 feet to a point having Coordinates of X = 2,402,368.71 and Y = 303,248.61; thence East 932.67 feet to a point having Coordinates of X = 2,403,301.38 and Y = 303,248.61; thence North 68 degrees 44 minutes 48 seconds East 6,095.20 feet to a point having Coordinates of X = 2,408,982.03 and Y = 305,458.07; thence East 1,972.89 feet to a point having Coordinates of X = 2,410,954.92 and Y = 305,458.07; thence South 10,209.46 feet to the point of beginning, containing approximately **1,200 acres**, all as more particularly outlined on a plat on file in the Office of Mineral Resources, Department of Natural Resources, as provided by the applicant. All bearings, distances and coordinates are based on Louisiana Coordinate System of 1927, (North or South Zone), where applicable.

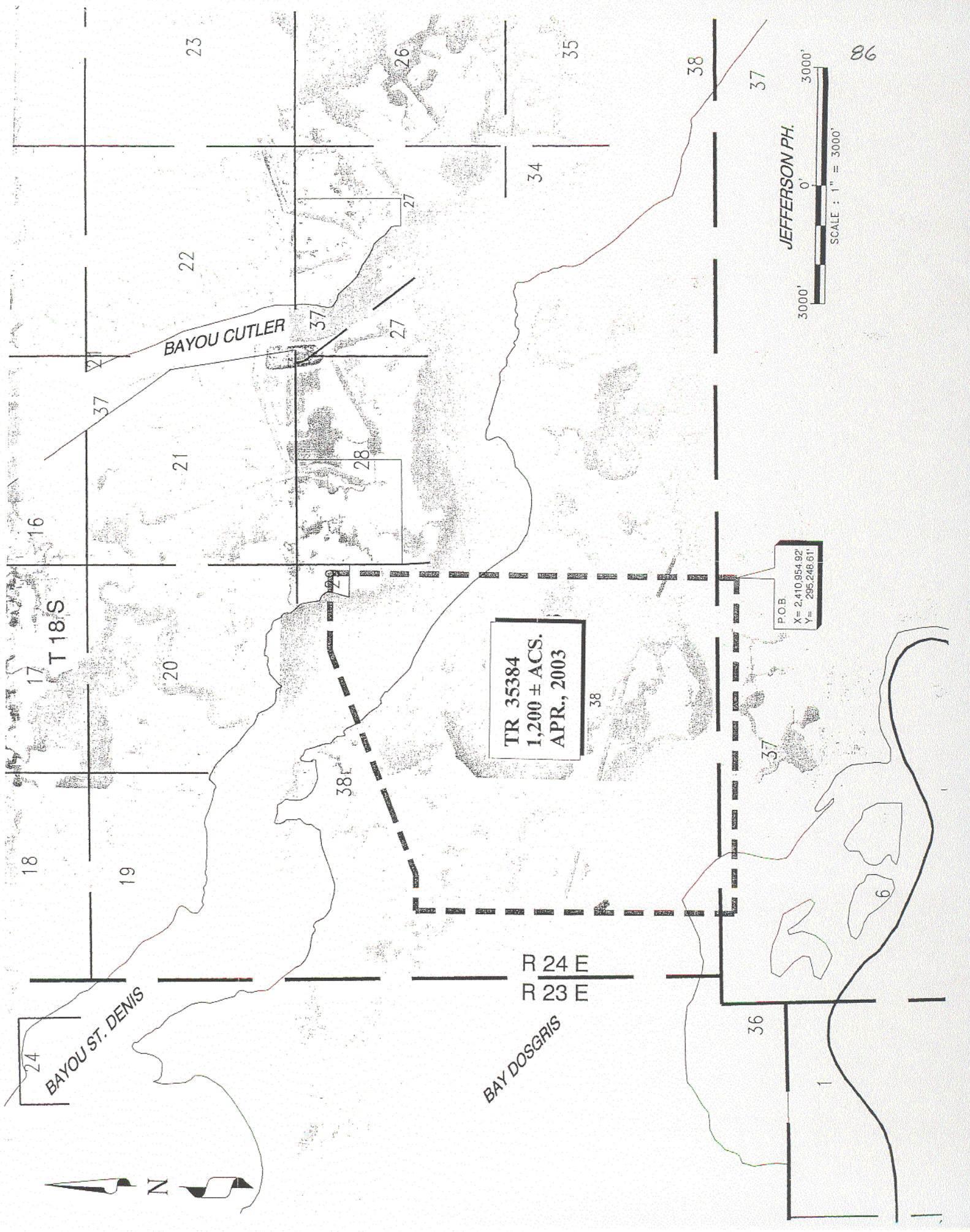
NOTE: The above description of the Tract nominated for lease has been provided and corrected, where required, exclusively by the nomination party. Any mineral lease selected from this Tract and awarded by the Louisiana State Mineral Board shall be without warranty of any kind, either express, implied, or statutory, including, but not limited to, the implied warranties of merchantability and fitness for a particular purpose. Should the mineral lease awarded by the Louisiana State Mineral Board be subsequently modified, cancelled or abrogated due to the existence of conflicting leases, operating agreements, private claims or other future obligations or conditions which may affect all or any portion of the leased Tract, it shall not relieve the Lessee of the obligation to pay any bonus due thereon to the Louisiana State Mineral Board, nor shall the Louisiana State Mineral Board be obligated to refund any consideration paid by the Lessor prior to such modification, cancellation, or abrogation, including, but not limited to, bonuses, rentals and royalties.

NOTE: The Department of Wildlife and Fisheries has designated certain areas in the coastal waters of the State of Louisiana as Oyster Seed Bed Areas. The exact location of those Seed Bed Areas must be obtained from the Department of Wildlife and Fisheries and any work done under a mineral lease from the State of Louisiana may necessarily be conducted in

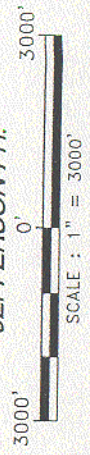
conformity with the rules and regulations promulgated by the said Department of Wildlife and Fisheries for Oyster Seed Bed Areas.

NOTE: The State of Louisiana does hereby reserve, and this lease shall be subject to, the imprescriptible right of surface use in the nature of a servitude in favor of the Department of Natural Resources, including its Offices and Commissions, for the sole purpose of implementing, constructing, servicing and maintaining approved coastal zone management and/or restoration projects. Utilization of any and all rights derived under this lease by the mineral lessee, its agents, successors or assigns, shall not interfere with nor hinder the reasonable surface use by the Department of Natural Resources, its Offices or Commissions, as herein above reserved.

Applicant: Cypress Energy Corporation



JEFFERSON PH.



86

TR 35384
1,200 ± ACS.
APR., 2003

P.O.B.
X= 2410.954.92
Y= 295.248.61

R 24 E
R 23 E

BAY DOGRIS

BAYOU ST. DENIS

BAYOU CUTLER

TRACT 35385 - Jefferson Parish, Louisiana

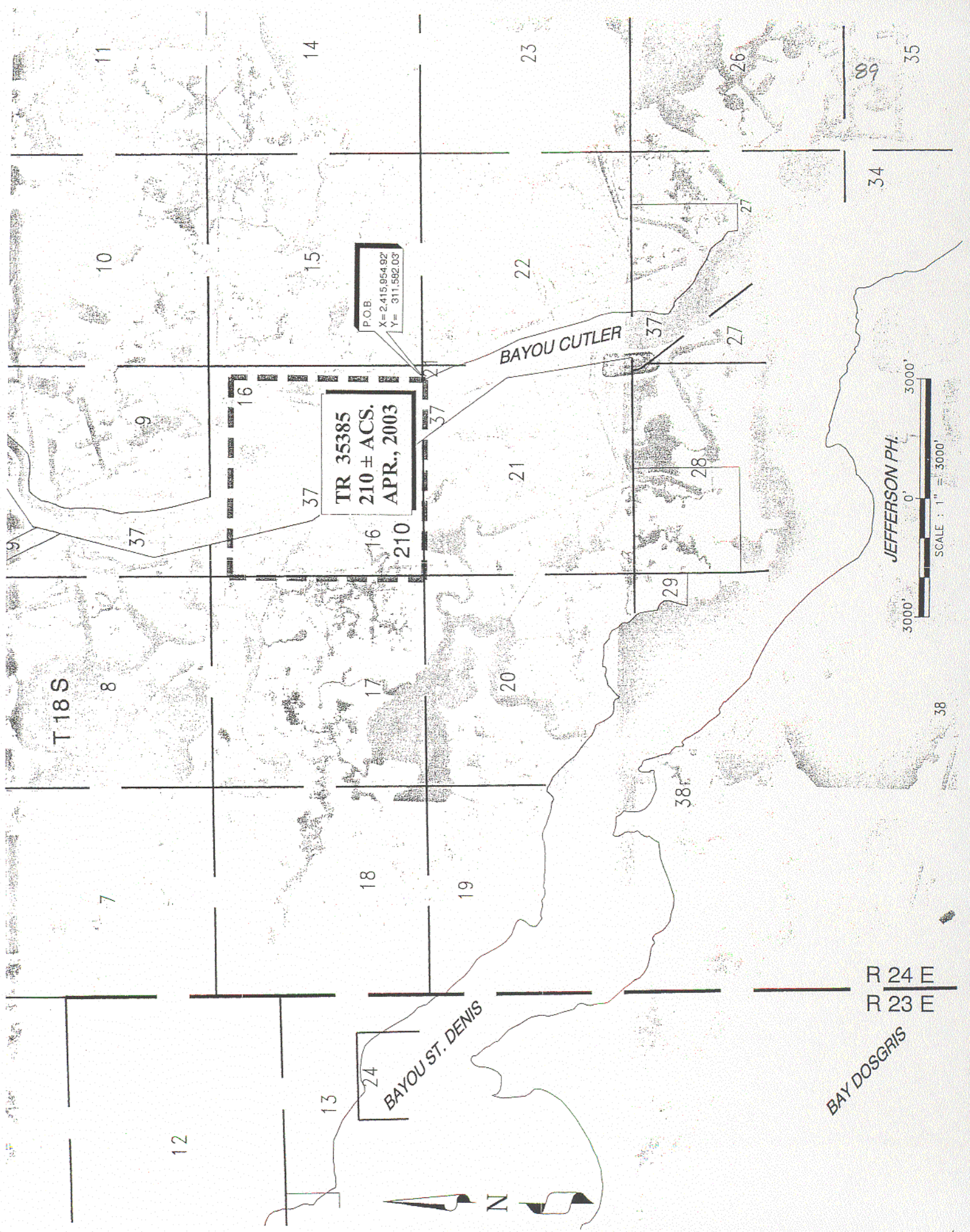
All of the lands now or formerly constituting the beds and bottoms of all water bodies of every nature and description, and all islands and other lands formed by accretion, where allowed by law, or by reliction, and excepting tax adjudicated lands, belonging to the State of Louisiana and not presently under mineral lease on April 9, 2003, situated in Jefferson Parish, Louisiana, and more particularly described as follows: Beginning at a point having Coordinates of X = 2,415,954.92 and Y = 311,582.03; thence West 5,000.00 feet to a point having Coordinates of X = 2,410,954.92 and Y = 311,582.03; thence North 4,807.97 feet to a point having Coordinates of X = 2,410,954.92 and Y = 316,390.00; thence East 5,000.00 feet to a point having Coordinates of X = 2,415,954.92 and Y = 316,390.00; thence South 4,807.97 feet to the point of beginning, containing approximately **210 acres**, all as more particularly outlined on a plat on file in the Office of Mineral Resources, Department of Natural Resources, as provided by the applicant. All bearings, distances and coordinates are based on Louisiana Coordinate System of 1927, (North or South Zone), where applicable.

NOTE: The above description of the Tract nominated for lease has been provided and corrected, where required, exclusively by the nomination party. Any mineral lease selected from this Tract and awarded by the Louisiana State Mineral Board shall be without warranty of any kind, either express, implied, or statutory, including, but not limited to, the implied warranties of merchantability and fitness for a particular purpose. Should the mineral lease awarded by the Louisiana State Mineral Board be subsequently modified, cancelled or abrogated due to the existence of conflicting leases, operating agreements, private claims or other future obligations or conditions which may affect all or any portion of the leased Tract, it shall not relieve the Lessee of the obligation to pay any bonus due thereon to the Louisiana State Mineral Board, nor shall the Louisiana State Mineral Board be obligated to refund any consideration paid by the Lessor prior to such modification, cancellation, or abrogation, including, but not limited to, bonuses, rentals and royalties.

NOTE: The Department of Wildlife and Fisheries has designated certain areas in the coastal waters of the State of Louisiana as Oyster Seed Bed Areas. The exact location of those Seed Bed Areas must be obtained from the Department of Wildlife and Fisheries and any work done under a mineral lease from the State of Louisiana may necessarily be conducted in conformity with the rules and regulations promulgated by the said Department of Wildlife and Fisheries for Oyster Seed Bed Areas.

NOTE: The State of Louisiana does hereby reserve, and this lease shall be subject to, the imprescriptible right of surface use in the nature of a servitude in favor of the Department of Natural Resources, including its Offices and Commissions, for the sole purpose of implementing, constructing, servicing and maintaining approved coastal zone management and/or restoration projects. Utilization of any and all rights derived under this lease by the mineral lessee, its agents, successors or assigns, shall not interfere with nor hinder the reasonable surface use by the Department of Natural Resources, its Offices or Commissions, as herein above reserved.

Applicant: Cypress Energy Corporation



TR 35385
210 ± ACS.
APR., 2003

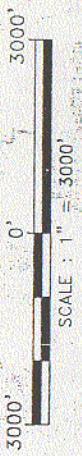
P.O.B.
X=2415.95492
Y=311.59203

BAYOU CUTLER

BAYOU ST. DENIS

R 24 E
R 23 E
BAY DOSGRIS

JEFFERSON PH.



N

TRACT 35386 - Jefferson Parish, Louisiana

All of the lands now or formerly constituting the beds and bottoms of all water bodies of every nature and description, and all islands and other lands formed by accretion, where allowed by law, or by reliction, and excepting tax adjudicated lands, belonging to the State of Louisiana and not presently under mineral lease on April 9, 2003, situated in Jefferson Parish, Louisiana, and more particularly described as follows: Beginning at a point having Coordinates of X = 2,415,954.92 and Y = 311,582.03; thence South 5,195.00 feet to a point having Coordinates of X = 2,415,954.92 and Y = 306,387.03 being on the North line of State Lease No. 4972; thence South 89 degrees 00 minutes 00 seconds West 1,005.45 feet along said North line of said State Lease No. 4972 to the Northwest corner having Coordinates of X = 2,414,949.62 and Y = 306,369.48; thence West 3,994.70 feet to a point having Coordinates of X = 2,410,954.92 and Y = 306,369.48; thence North 5,212.55 feet to a point having Coordinates of X = 2,410,954.92 and Y = 311,582.03; thence East 5,000.00 feet to the point of beginning, containing approximately **20 acres**, all as more particularly outlined on a plat on file in the Office of Mineral Resources, Department of Natural Resources, as provided by the applicant. All bearings, distances and coordinates are based on Louisiana Coordinate System of 1927, (North or South Zone), where applicable.

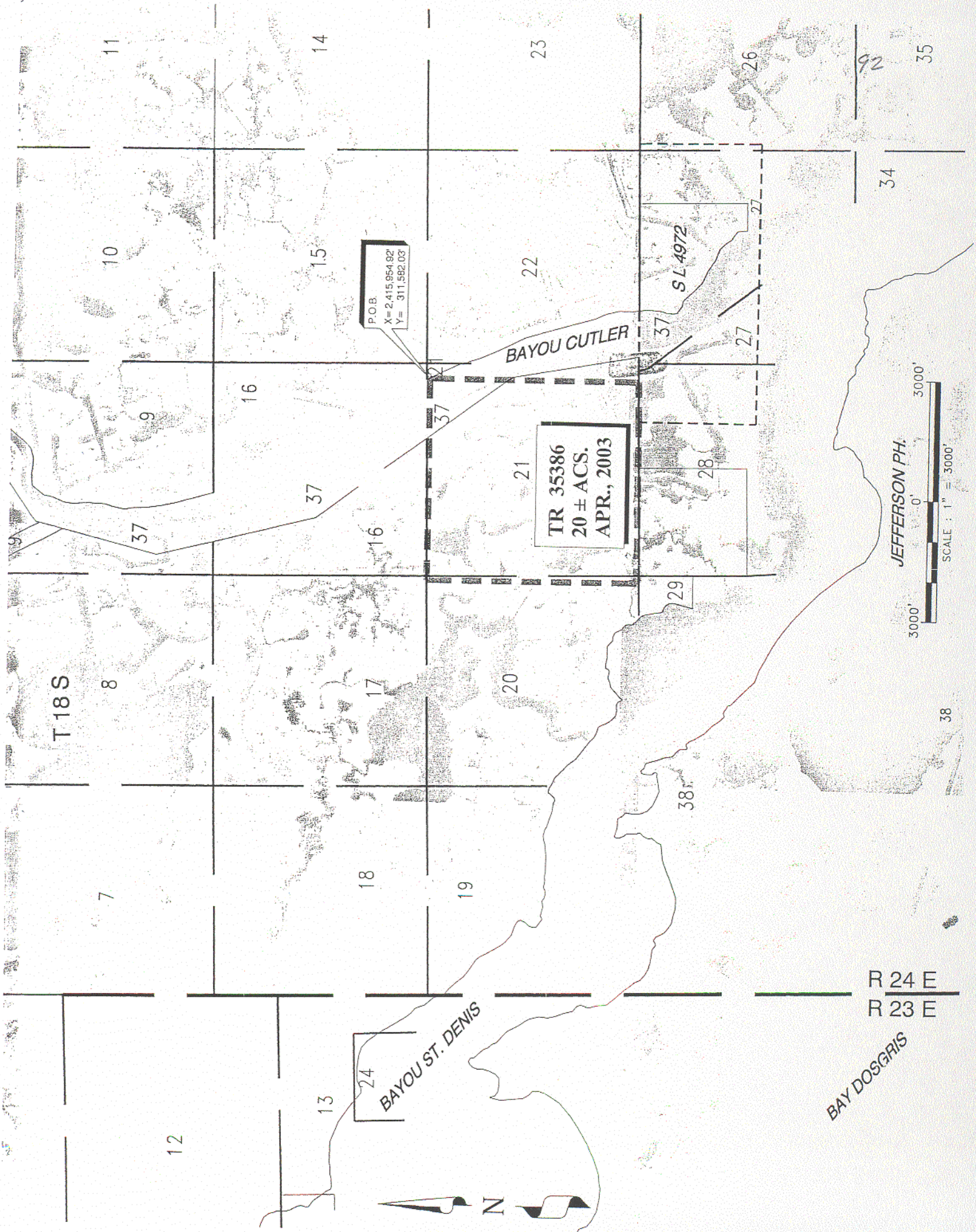
NOTE: The above description of the Tract nominated for lease has been provided and corrected, where required, exclusively by the nomination party. Any mineral lease selected from this Tract and awarded by the Louisiana State Mineral Board shall be without warranty of any kind, either express, implied, or statutory, including, but not limited to, the implied warranties of merchantability and fitness for a particular purpose. Should the mineral lease awarded by the Louisiana State Mineral Board be subsequently modified, cancelled or abrogated due to the existence of conflicting leases, operating agreements, private claims or other future obligations or conditions which may affect all or any portion of the leased Tract, it shall not relieve the Lessee of the obligation to pay any bonus due thereon to the Louisiana State Mineral Board, nor shall the Louisiana State Mineral Board be obligated to refund any consideration paid by the Lessor prior to such modification, cancellation, or abrogation, including, but not limited to, bonuses, rentals and royalties.

NOTE: The Department of Wildlife and Fisheries has designated certain areas in the coastal waters of the State of Louisiana as Oyster Seed Bed Areas. The exact location of those Seed Bed Areas must be obtained from the Department of Wildlife and Fisheries and any work done under a mineral lease from the State of Louisiana may necessarily be conducted in

conformity with the rules and regulations promulgated by the said Department of Wildlife and Fisheries for Oyster Seed Bed Areas.

NOTE: The State of Louisiana does hereby reserve, and this lease shall be subject to, the imprescriptible right of surface use in the nature of a servitude in favor of the Department of Natural Resources, including its Offices and Commissions, for the sole purpose of implementing, constructing, servicing and maintaining approved coastal zone management and/or restoration projects. Utilization of any and all rights derived under this lease by the mineral lessee, its agents, successors or assigns, shall not interfere with nor hinder the reasonable surface use by the Department of Natural Resources, its Offices or Commissions, as herein above reserved.

Applicant: Cypress Energy Corporation



T18 S

BAYOU ST. DENIS

BAYOU CUTLER

SL 4972

JEFFERSON PH.

R 24 E
R 23 E
BAY DOSGRIS

P.O.B.
X= 2,415,954.92
Y= 311,582.03

TR 35386
20 ± ACS.
APR., 2003

3000'
0'
3000'
SCALE: 1" = 3000'

N

TRACT 35387 - Jefferson Parish, Louisiana

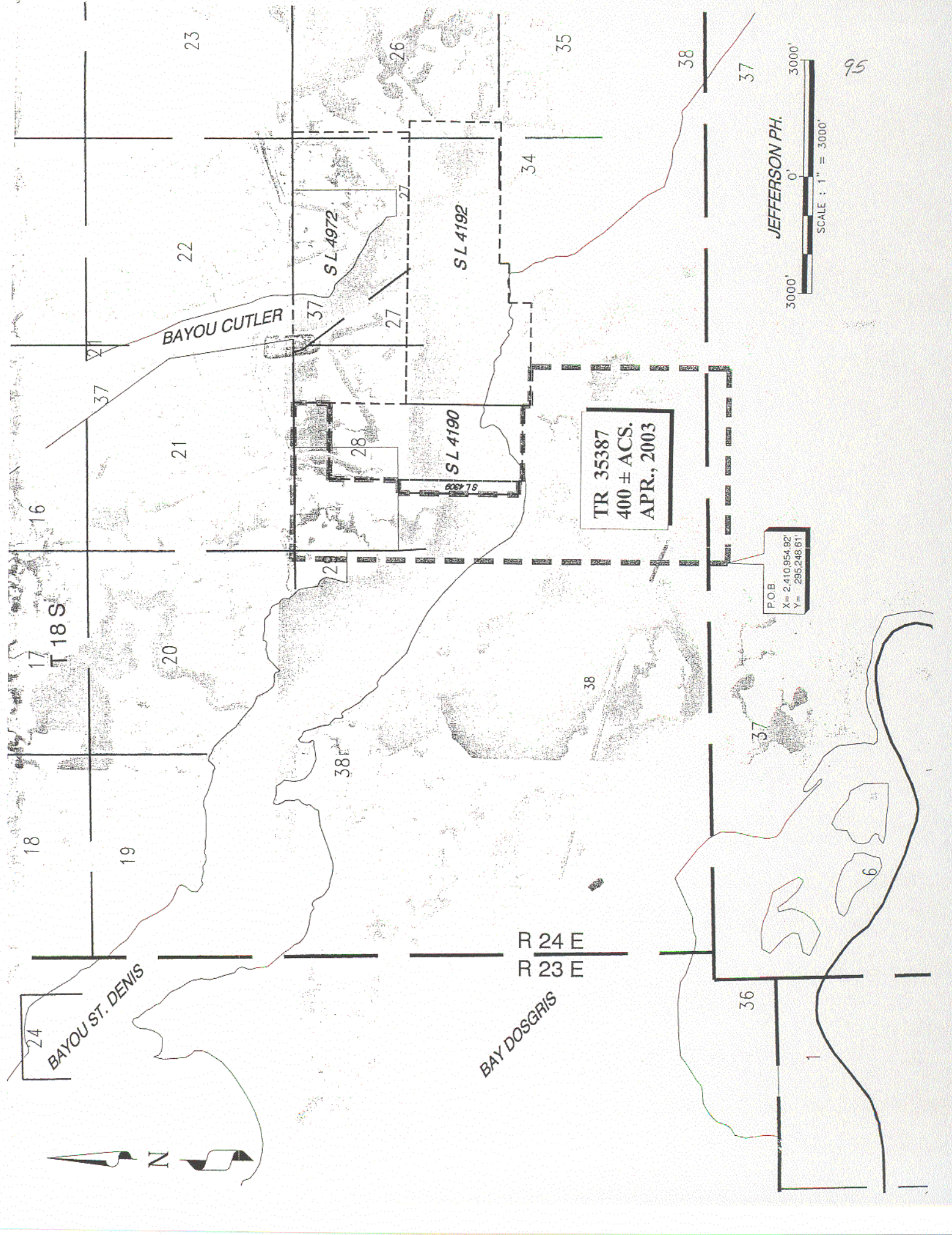
All of the lands now or formerly constituting the beds and bottoms of all water bodies of every nature and description, and all islands and other lands formed by accretion, where allowed by law, or by reliction, and excepting tax adjudicated lands, belonging to the State of Louisiana and not presently under mineral lease on April 9, 2003, situated in Jefferson Parish, Louisiana, and more particularly described as follows: Beginning at a point having Coordinates of X = 2,410,954.92 and Y = 295,248.61; thence North 11,120.87 feet to a point having Coordinates of X = 2,410,954.92 and Y = 306,369.48; thence East 3,994.70 feet to the Northwest corner of State Lease No. 4972 having Coordinates of X = 2,414,949.62 and Y = 306,369.48; thence South 911.41 feet along the West line of said State Lease No. 4972 to the Northeast corner of State Lease No. 4190 having Coordinates of X = 2,414,949.62 and Y = 305,458.07; thence West 1,950.00 feet along the North line of said State Lease No. 4190 to its Northwest corner having Coordinates of X = 2,412,999.62 and Y = 305,458.07; thence South 1,764.10 feet along the West line of said State Lease No. 4190 to the Northeast corner of State Lease No. 4309, as amended, having Coordinates of X = 2,412,999.62 and Y = 303,693.97; thence South 88 degrees 58 minutes 57 seconds West 327.23 feet along the North line of said State Lease No. 4309 to its Northwest corner having Coordinates of X = 2,412,672.44 and Y = 303,688.16; thence South 3,080.09 feet along the West line of said State Lease No. 4309 to its Southwest corner having Coordinates of X = 2,412,672.44 and Y = 300,608.07; thence East 327.18 feet along the South line of said State Lease No. 4309 to its Southeast corner having Coordinates of X = 2,412,999.62 and Y = 300,608.07 being also a point on the West line of said State Lease No. 4190; thence South 100.00 feet along the West line of said State Lease No. 4190 to its Southwest corner having Coordinates of X = 2,412,999.62 and Y = 300,508.07; thence East 1,950.00 feet along the South line of said State Lease No. 4190 to its Southeast corner also being a point on the West line of State Lease No. 4192 having Coordinates of X = 2,414,949.62 and Y = 300,508.07; thence South 200.00 feet along the West line of said State Lease No. 4192 to its Southwest corner having Coordinates of X = 2,414,949.62 and Y = 300,308.07; thence East 1,005.30 feet along the South line of said State Lease No. 4192 to a point having Coordinates of X = 2,415,954.92 and Y = 300,308.07; thence South 5,059.46 feet to a point having Coordinates of X = 2,415,954.92 and Y = 295,248.61; thence West 5,000.00 feet to the point of beginning, containing approximately **400 acres**, all as more particularly outlined on a plat on file in the Office of Mineral Resources, Department of Natural Resources, as provided by the applicant. All bearings, distances and coordinates are based on Louisiana Coordinate System of 1927, (North or South Zone), where applicable.

NOTE: The above description of the Tract nominated for lease has been provided and corrected, where required, exclusively by the nomination party. Any mineral lease selected from this Tract and awarded by the Louisiana State Mineral Board shall be without warranty of any kind, either express, implied, or statutory, including, but not limited to, the implied warranties of merchantability and fitness for a particular purpose. Should the mineral lease awarded by the Louisiana State Mineral Board be subsequently modified, cancelled or abrogated due to the existence of conflicting leases, operating agreements, private claims or other future obligations or conditions which may affect all or any portion of the leased Tract, it shall not relieve the Lessee of the obligation to pay any bonus due thereon to the Louisiana State Mineral Board, nor shall the Louisiana State Mineral Board be obligated to refund any consideration paid by the Lessor prior to such modification, cancellation, or abrogation, including, but not limited to, bonuses, rentals and royalties.

NOTE: The Department of Wildlife and Fisheries has designated certain areas in the coastal waters of the State of Louisiana as Oyster Seed Bed Areas. The exact location of those Seed Bed Areas must be obtained from the Department of Wildlife and Fisheries and any work done under a mineral lease from the State of Louisiana may necessarily be conducted in conformity with the rules and regulations promulgated by the said Department of Wildlife and Fisheries for Oyster Seed Bed Areas.

NOTE: The State of Louisiana does hereby reserve, and this lease shall be subject to, the imprescriptible right of surface use in the nature of a servitude in favor of the Department of Natural Resources, including its Offices and Commissions, for the sole purpose of implementing, constructing, servicing and maintaining approved coastal zone management and/or restoration projects. Utilization of any and all rights derived under this lease by the mineral lessee, its agents, successors or assigns, shall not interfere with nor hinder the reasonable surface use by the Department of Natural Resources, its Offices or Commissions, as herein above reserved.

Applicant: Cypress Energy Corporation



TR 35387
400 ± ACS.
APR., 2003

POB
X = 2,410,954.92
Y = 295,248.61

JEFFERSON PH.
SCALE : 1" = 3000'

95

TRACT 35388 - Portion of Block 3, Main Pass Area, Revised, St. Bernard Parish, Louisiana

All of the lands now or formerly constituting the beds and bottoms of all water bodies of every nature and description, and all islands and other lands formed by accretion, where allowed by law, or by reliction, and excepting tax adjudicated lands, belonging to the State of Louisiana and not presently under mineral lease on April 9, 2003, situated in St. Bernard Parish, Louisiana, and more particularly described as follows: Beginning at the Southeast corner of Block 3, Main Pass Area, Revised, having Coordinates of X = 2,620,600.00 and Y = 366,580.00; thence West 7,375.00 feet along the South line of said Block 3 to a point having Coordinates of X = 2,613,225.00 and Y = 366,580.00; thence North 13,054.17 feet to a point on the South line of State Lease No. 17662 having Coordinates of X = 2,613,225.00 and Y = 379,634.17; thence East 3,615.17 feet along the South line of said State Lease No. 17662 to its Southeast corner having Coordinates of X = 2,616,840.17 and Y = 379,634.17; thence North 812.97 feet along the East line of said State Lease No. 17662 to a point on the Southern boundary of State Lease No. 16713 having Coordinates of X = 2,616,840.17 and Y = 380,447.14; thence along the Southern boundary of said State Lease No. 16713 the following courses: South 74 degrees 19 minutes 52 seconds East 292.18 feet to a point having Coordinates of X = 2,617,121.49 and Y = 380,368.23; South 77 degrees 03 minutes 21 seconds East 300.22 feet to a point having Coordinates of X = 2,617,414.08 and Y = 380,300.98; South 84 degrees 27 minutes 51 seconds East 304.86 feet to a point having Coordinates of X = 2,617,717.52 and Y = 380,271.57; South 87 degrees 56 minutes 22 seconds East 406.62 feet to a point having Coordinates of X = 2,618,123.88 and Y = 380,256.95; North 84 degrees 45 minutes 05 seconds East 479.47 feet to a point having Coordinates of X = 2,618,601.33 and Y = 380,300.81; North 77 degrees 42 minutes 12 seconds East 390.80 feet to a point having Coordinates of X = 2,618,983.17 and Y = 380,384.04 and North 66 degrees 13 minutes 32 seconds East 405.07 feet to a point on the Southern boundary of State Lease No. 17277, having Coordinates of X = 2,619,353.86 and Y = 380,547.34; thence East 1,246.14 feet along the Southern boundary of said State Lease No. 17277 to its Southeast corner, said corner also being on the East line of said Block 3, having Coordinates of X = 2,620,600.00 and Y = 380,547.34; thence South 13,967.34 feet along the East line of said Block 3 to the point of beginning, containing approximately **2,237 acres**, all as more particularly outlined on a plat on file in the Office of Mineral Resources, Department of Natural Resources, as provided by the applicant. All bearings, distances and coordinates are based on Louisiana Coordinate System of 1927, (North or South Zone), where applicable.

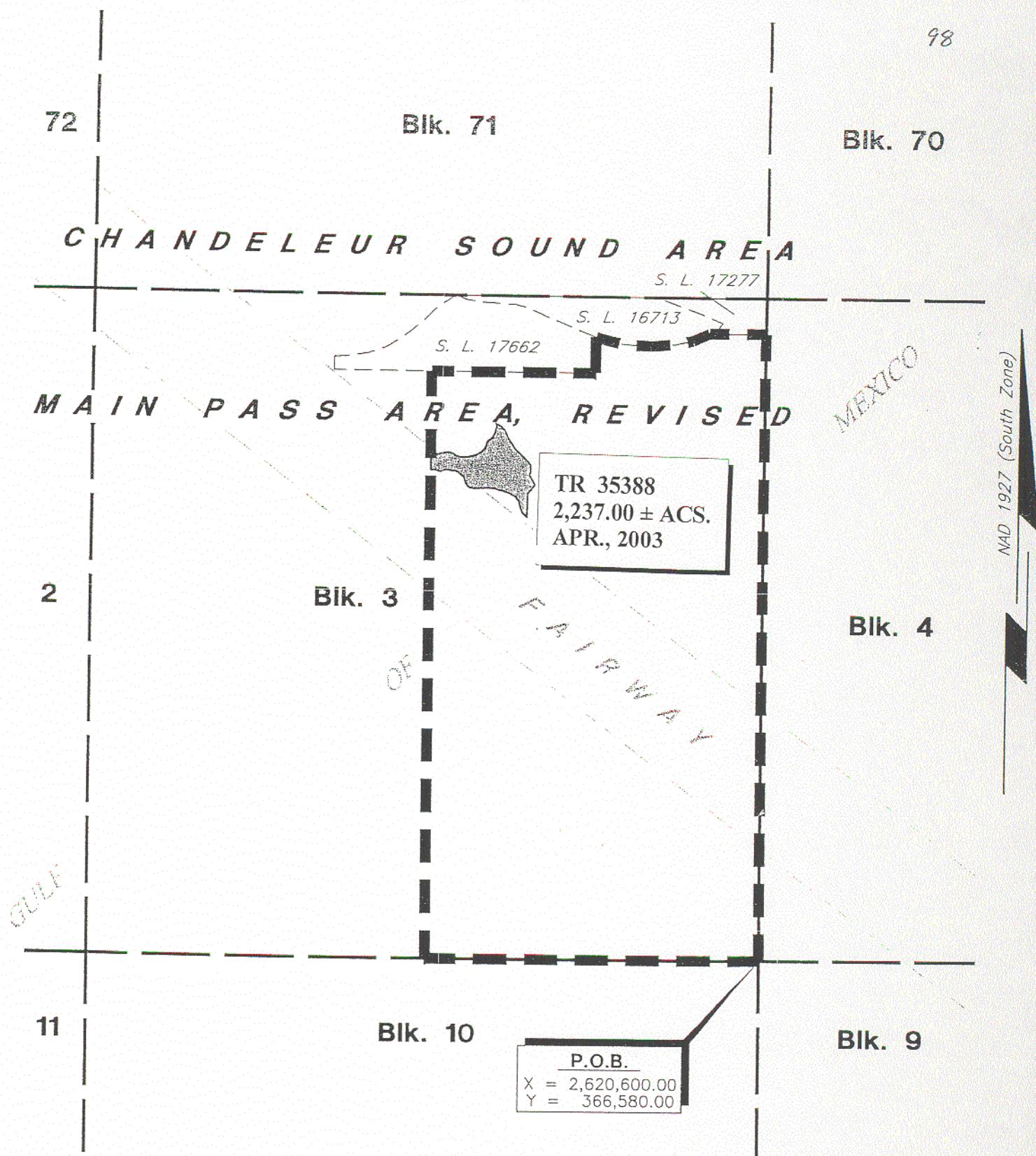
NOTE: The above description of the Tract nominated for lease has been provided and corrected, where required, exclusively by the nomination party. Any mineral lease selected from this Tract and awarded by the Louisiana State Mineral Board shall be without warranty of any kind, either express, implied, or statutory, including, but not limited to, the implied warranties of merchantability and fitness for a particular purpose. Should the mineral lease awarded by the Louisiana State Mineral Board be subsequently modified, cancelled or abrogated due to the existence of conflicting leases, operating agreements, private claims or other future obligations or conditions which may affect all or any portion of the leased Tract, it shall not relieve the Lessee of the obligation to pay any bonus due thereon to the Louisiana State Mineral Board, nor shall the Louisiana State Mineral Board be obligated to refund any consideration paid by the Lessor prior to such modification, cancellation, or abrogation, including, but not limited to, bonuses, rentals and royalties.

NOTE: The Department of Wildlife and Fisheries has designated certain areas in the coastal waters of the State of Louisiana as Oyster Seed Bed Areas. The exact location of those Seed Bed Areas must be obtained from the Department of Wildlife and Fisheries and any work done under a mineral lease from the State of Louisiana may necessarily be conducted in conformity with the rules and regulations promulgated by the said Department of Wildlife and Fisheries for Oyster Seed Bed Areas.

NOTE: It appears, according to our records, that a portion of this Tract is located within the restrictive safety fairway area as set out by the Corps of Engineers, U.S. Army and/or the restrictive anchorage area as set out by the U.S. Coast Guard.

NOTE: The State of Louisiana does hereby reserve, and this lease shall be subject to, the imprescriptible right of surface use in the nature of a servitude in favor of the Department of Natural Resources, including its Offices and Commissions, for the sole purpose of implementing, constructing, servicing and maintaining approved coastal zone management and/or restoration projects. Utilization of any and all rights derived under this lease by the mineral lessee, its agents, successors or assigns, shall not interfere with nor hinder the reasonable surface use by the Department of Natural Resources, its Offices or Commissions, as herein above reserved.

Applicant: Energy Partners, Inc.



ST. BERNARD

PARISH

LOUISIANA

SCALE : 1" = 3000'

TRACT 35389 - Portion of Block 4, Main Pass Area, Revised, St. Bernard Parish, Louisiana

All of the lands now or formerly constituting the beds and bottoms of all water bodies of every nature and description, and all islands and other lands formed by accretion, where allowed by law, or by reliction, and excepting tax adjudicated lands, belonging to the State of Louisiana and not presently under mineral lease on April 9, 2003, situated in St. Bernard Parish, Louisiana, and more particularly described as follows: Beginning at the Southwest corner of Block 4, Main Pass Area, Revised, having Coordinates of X = 2,620,600.00 and Y = 366,580.00; thence North 13,602.00 feet along the West line of said Block 4 to the Southwest corner of State Lease No. 17279 having Coordinates of X = 2,620,600.00 and Y = 380,182.00; thence East 2,036.00 feet along the South line of said State Lease No. 17279 to its Southeast corner, said corner also being the most Westerly Southwest corner of State Lease No. 16731, having Coordinates of X = 2,622,636.00 and Y = 380,182.00; thence along the boundary of said State Lease No. 16731 the following courses: East 1,552.00 feet to an interior corner having Coordinates of X = 2,624,188.00 and Y = 380,182.00; South 2,252.00 feet to its most Southerly Southwest corner having Coordinates of X = 2,624,188.00 and Y = 377,930.00 and East 2,662.32 feet to its most Southerly Southeast corner, said corner also being the most Westerly Southwest corner of State Lease No. 16299, having Coordinates of X = 2,626,850.32 and Y = 377,930.00; thence along the boundary of said State Lease No. 16299 the following courses: East 499.68 feet to an interior corner having Coordinates of X = 2,627,350.00 and Y = 377,930.00; South 1,016.40 feet to its most Southerly Southwest corner having Coordinates of X = 2,627,350.00 and Y = 376,913.60 and East 480.00 feet to the Northwest corner of State Lease No. 16732 having Coordinates of X = 2,627,830.00 and Y = 376,913.60; thence South 2,095.60 feet along the West line of said State Lease No. 16732 to its Southwest corner having Coordinates of X = 2,627,830.00 and Y = 374,818.00; thence East 145.00 feet along the South line of said State Lease No. 16732 to a point having Coordinates of X = 2,627,975.00 and Y = 374,818.00; thence South 8,238.00 feet to a point on the South line of said Block 4 having Coordinates of X = 2,627,975.00 and Y = 366,580.00; thence West 7,375.00 feet along the South line of said Block 4 to the point of beginning, containing approximately **2,085.57 acres**, all as more particularly outlined on a plat on file in the Office of Mineral Resources, Department of Natural Resources, as provided by the applicant. All bearings, distances and coordinates are based on Louisiana Coordinate System of 1927, (North or South Zone), where applicable.

NOTE: The above description of the Tract nominated for lease has been provided and corrected, where required, exclusively by the nomination

party. Any mineral lease selected from this Tract and awarded by the Louisiana State Mineral Board shall be without warranty of any kind, either express, implied, or statutory, including, but not limited to, the implied warranties of merchantability and fitness for a particular purpose. Should the mineral lease awarded by the Louisiana State Mineral Board be subsequently modified, cancelled or abrogated due to the existence of conflicting leases, operating agreements, private claims or other future obligations or conditions which may affect all or any portion of the leased Tract, it shall not relieve the Lessee of the obligation to pay any bonus due thereon to the Louisiana State Mineral Board, nor shall the Louisiana State Mineral Board be obligated to refund any consideration paid by the Lessor prior to such modification, cancellation, or abrogation, including, but not limited to, bonuses, rentals and royalties.

NOTE: The Department of Wildlife and Fisheries has designated certain areas in the coastal waters of the State of Louisiana as Oyster Seed Bed Areas. The exact location of those Seed Bed Areas must be obtained from the Department of Wildlife and Fisheries and any work done under a mineral lease from the State of Louisiana may necessarily be conducted in conformity with the rules and regulations promulgated by the said Department of Wildlife and Fisheries for Oyster Seed Bed Areas.

NOTE: It appears, according to our records, that a portion of this Tract is located within the restrictive safety fairway area as set out by the Corps of Engineers, U.S. Army and/or the restrictive anchorage area as set out by the U.S. Coast Guard.

NOTE: The State of Louisiana does hereby reserve, and this lease shall be subject to, the imprescriptible right of surface use in the nature of a servitude in favor of the Department of Natural Resources, including its Offices and Commissions, for the sole purpose of implementing, constructing, servicing and maintaining approved coastal zone management and/or restoration projects. Utilization of any and all rights derived under this lease by the mineral lessee, its agents, successors or assigns, shall not interfere with nor hinder the reasonable surface use by the Department of Natural Resources, its Offices or Commissions, as herein above reserved.

Applicant: Energy Partners, Inc.

Blk. 71

Blk. 70

Blk. 69

CHANDELEUR SOUND AREA

S. L. 17279

S. L. 16731

S. L. 16299

S. L. 16732

Blk. 3

TR 35389
2,085.57 ± ACS.
APR., 2003

Blk. 4

OF

MAIN PASS AREA, REVISED

BRETON SOUND AREA

MEXICO

NAD 1927 (South Zone)

0011F

P.O.B.

X = 2,620,600.00
Y = 366,580.00

Blk. 10

Blk. 9

FAIRWAY

Blk. 16

ST. BERNARD

PARISH,

LOUISIANA

SCALE : 1" = 3000'

TRACT 35390 - Portion of Block 9, Main Pass Area, Revised, Plaquemines and St. Bernard Parishes, Louisiana

All of the lands now or formerly constituting the beds and bottoms of all water bodies of every nature and description, and all islands and other lands formed by accretion, where allowed by law, or by reliction, and excepting tax adjudicated lands, belonging to the State of Louisiana and not presently under mineral lease on April 9, 2003, situated in Plaquemines and St. Bernard Parishes, Louisiana, and more particularly described as follows: Beginning at the Northwest corner of Block 9, Main Pass Area, Revised, having Coordinates of X = 2,620,600.00 and Y = 366,580.00; thence East 9,000.00 feet along the North line of said Block 9 to a point having Coordinates of X = 2,629,600.00 and Y = 366,580.00; thence South 14,750.00 feet to a point on the South line of said Block 9 having Coordinates of X = 2,629,600.00 and Y = 351,830.00; thence West 9,000.00 feet along the South line of said Block 9 to its Southwest corner having Coordinates of X = 2,620,600.00 and Y = 351,830.00; thence North 4,261.13 feet along the West line of said Block 9 to the Southwest corner of State Lease No. 16633 having Coordinates of X = 2,620,600.00 and Y = 356,091.13; thence along the boundary of said State Lease No. 16633 the following courses: East 4,249.36 feet to its Southeast corner having Coordinates of X = 2,624,849.36 and Y = 356,091.13; North 2,050.00 feet to its most Easterly Northeast corner having Coordinates of X = 2,624,849.36 and Y = 358,141.13; West 2,299.36 feet to an interior corner having Coordinates of X = 2,622,550.00 and Y = 358,141.13; North 1,500.00 feet to its most Northerly Northeast corner having Coordinates of X = 2,622,550.00 and Y = 359,641.13 and West 1,950.00 feet to its Northwest corner, said corner also being a point on the West line of said Block 9, having Coordinates of X = 2,620,600.00 and Y = 359,641.13; thence North 3,958.87 feet along the West line of said Block 9 to the most Westerly Southwest corner of State Lease No. 17451 having Coordinates of X = 2,620,600.00 and Y = 363,600.00; thence along the boundary of said State Lease No. 17451 the following courses: South 56 degrees 15 minutes 00 seconds East 5,291.84 feet to its most Southerly corner having Coordinates of X = 2,625,000.00 and Y = 360,660.00; North 64 degrees 34 minutes 55 seconds East 3,797.60 feet to its most Easterly Southeast corner having Coordinates of X = 2,628,430.00 and Y = 362,290.00; North 2,800.00 feet to its Northeast corner having Coordinates of X = 2,628,430.00 and Y = 365,090.00; West 7,830.00 feet to its Northwest corner, said corner also being a point on the West line of said Block 9, having Coordinates of X = 2,620,600.00 and Y = 365,090.00; thence North 1,490.00 feet along the West line of said Block 9 to the point of beginning, containing approximately **2,196.75 acres**, all as more particularly outlined on a plat on file in the Office of Mineral Resources, Department of Natural Resources, as provided by the applicant. All bearings, distances and coordinates are based on

Louisiana Coordinate System of 1927, (North or South Zone), where applicable.

NOTE: The above description of the Tract nominated for lease has been provided and corrected, where required, exclusively by the nomination party. Any mineral lease selected from this Tract and awarded by the Louisiana State Mineral Board shall be without warranty of any kind, either express, implied, or statutory, including, but not limited to, the implied warranties of merchantability and fitness for a particular purpose. Should the mineral lease awarded by the Louisiana State Mineral Board be subsequently modified, cancelled or abrogated due to the existence of conflicting leases, operating agreements, private claims or other future obligations or conditions which may affect all or any portion of the leased Tract, it shall not relieve the Lessee of the obligation to pay any bonus due thereon to the Louisiana State Mineral Board, nor shall the Louisiana State Mineral Board be obligated to refund any consideration paid by the Lessor prior to such modification, cancellation, or abrogation, including, but not limited to, bonuses, rentals and royalties.

NOTE: It appears, according to our records, that a portion of this Tract is located within the restrictive safety fairway area as set out by the Corps of Engineers, U.S. Army and/or the restrictive anchorage area as set out by the U.S. Coast Guard.

NOTE: The State of Louisiana does hereby reserve, and this lease shall be subject to, the imprescriptible right of surface use in the nature of a servitude in favor of the Department of Natural Resources, including its Offices and Commissions, for the sole purpose of implementing, constructing, servicing and maintaining approved coastal zone management and/or restoration projects. Utilization of any and all rights derived under this lease by the mineral lessee, its agents, successors or assigns, shall not interfere with nor hinder the reasonable surface use by the Department of Natural Resources, its Offices or Commissions, as herein above reserved.

Applicant: Energy Partners, Inc.

Blk. 3

Blk. 4

104
1

P.O.B.

X = 2,620,600.00
Y = 366,580.00

TR 35390
2,196.75 ± ACS.
APR., 2003

S. L. 17451

OF FAIRWAY

Blk. 10

Blk. 9

16

S. L. 16633

CHULA

ST. BERNARD PARISH
PLAQUEMINES PARISH

MAIN PASS AREA, REVISED

BRETON SOUND AREA

MEXICO

NAD 1927 (South Zone)

Blk. 15

Blk. 16

Blk. 17

SCALE : 1" = 3000'

TRACT 35391 - Portion of Block 47, Chandeleur Sound Area, St. Bernard Parish, Louisiana

All of the lands now or formerly constituting the beds and bottoms of all water bodies of every nature and description, and all islands and other lands formed by accretion, where allowed by law, or by reliction, and excepting tax adjudicated lands, belonging to the State of Louisiana and not presently under mineral lease on April 9, 2003, situated in St. Bernard Parish, Louisiana, and more particularly described as follows: Beginning at the Northeast corner of Block 47, Chandeleur Sound Area, having Coordinates of X = 2,605,850.00 and Y = 410,830.00; thence South 8,830.00 feet along the Eastern boundary of said Block 47 to the Northeast corner of State Lease No. 4039 having Coordinates of X = 2,605,850.00 and Y = 402,000.00; thence West 5,192.76 feet along the Northern boundary of said State Lease No. 4039 to a point, said point also being the Northeast corner of State Lease No. 17692 having Coordinates of X = 2,600,657.24 and Y = 402,000.00; thence West 251.23 feet along the Northern boundary of the said State Lease No. 17692 to its Northwest corner, said Northern boundary also being the said Northern boundary of said State Lease No. 4039 having Coordinates of X = 2,600,406.01 and Y = 402,000.00; thence West 1,931.01 feet along the said Northern boundary of said State Lease No. 4039 to its Northwest corner having Coordinates of X = 2,598,475.00 and Y = 402,000.00; thence South 5,920.00 feet along the Western boundary of said State Lease No. 4039 to its Southwest corner, said corner also being a point on the Southern boundary of said Block 47 having Coordinates of X = 2,598,475.00 and Y = 396,080.00; thence West 2,125.00 feet along the said Southern boundary of Block 47 to a point having Coordinates of X = 2,596,350.00 and Y = 396,080.00; thence North 14,750.00 feet to a point on the Northern boundary of said Block 47 having coordinates of X = 2,596,350.00 and Y = 410,830.00; thence East 9,500.00 feet along the said Northern boundary of Block 47 to the point of beginning, containing approximately **1,750 acres**, all as more particularly outlined on a plat on file in the Office of Mineral Resources, Department of Natural Resources, as provided by the applicant. All bearings, distances and coordinates are based on Louisiana Coordinate System of 1927, (North or South Zone), where applicable.

NOTE: The above description of the Tract nominated for lease has been provided and corrected, where required, exclusively by the nomination party. Any mineral lease selected from this Tract and awarded by the Louisiana State Mineral Board shall be without warranty of any kind, either express, implied, or statutory, including, but not limited to, the implied warranties of merchantability and fitness for a particular purpose. Should the mineral lease awarded by the Louisiana State Mineral Board be subsequently modified, cancelled or abrogated due to the

existence of conflicting leases, operating agreements, private claims or other future obligations or conditions which may affect all or any portion of the leased Tract, it shall not relieve the Lessee of the obligation to pay any bonus due thereon to the Louisiana State Mineral Board, nor shall the Louisiana State Mineral Board be obligated to refund any consideration paid by the Lessor prior to such modification, cancellation, or abrogation, including, but not limited to, bonuses, rentals and royalties.

NOTE: The Department of Wildlife and Fisheries has designated certain areas in the coastal waters of the State of Louisiana as Oyster Seed Bed Areas. The exact location of those Seed Bed Areas must be obtained from the Department of Wildlife and Fisheries and any work done under a mineral lease from the State of Louisiana may necessarily be conducted in conformity with the rules and regulations promulgated by the said Department of Wildlife and Fisheries for Oyster Seed Bed Areas.

NOTE: The State of Louisiana does hereby reserve, and this lease shall be subject to, the imprescriptible right of surface use in the nature of a servitude in favor of the Department of Natural Resources, including its Offices and Commissions, for the sole purpose of implementing, constructing, servicing and maintaining approved coastal zone management and/or restoration projects. Utilization of any and all rights derived under this lease by the mineral lessee, its agents, successors or assigns, shall not interfere with nor hinder the reasonable surface use by the Department of Natural Resources, its Offices or Commissions, as herein above reserved.

Applicant: Stephen M. Jenkins & Associates, Inc.

CHANDELEUR SOUND AREA

BLOCK 46

T14S-R17E

T14S-R18E

T15S-R17E

T15S-R18E

P.O.B. (NAD 1927)

X= 2,605,850.00'

Y= 410,830.00'

TR 35391
1,750 ± ACS.
APR., 2003

BLOCK 47

S.L. 15485

BLUFF GAS FIELD

S.L. 14969

HANASIO

LAKE ATHANASIO
GAS FIELD

LAKE ATHANASIO
GAS FIELD

Platform

S.L. 4039

S.L. 4039

S.L. 17692

HALF MOON LAKE
OIL FIELD

ST. BERNARD PARISH
CHANDELEUR SOUND AREA

2000' 0' 2000'

LAKE

ATHANASIO

TRACT 35392 - Portion of Block 48, Chandeleur Sound Area, St. Bernard Parish, Louisiana

All of the lands now or formerly constituting the beds and bottoms of all water bodies of every nature and description, and all islands and other lands formed by accretion, where allowed by law, or by reliction, and excepting tax adjudicated lands, belonging to the State of Louisiana and not presently under mineral lease on April 9, 2003, situated in St. Bernard Parish, Louisiana, and more particularly described as follows: Beginning at the Northwest corner of Block 48, Chandeleur Sound Area, having Coordinates of X = 2,605,850.00 and Y = 410,830.00; thence East 3,750.00 feet along the Northern boundary of said Block 48 to a point having Coordinates of X = 2,609,600.00 and Y = 410,830.00; thence South 3,689.00 feet to a point on the Northern boundary of State Lease No. 17002 having Coordinates of X = 2,609,600.00 and Y = 407,141.00; thence West 3,750.00 feet along the said Northern boundary of said State Lease No. 17002 to its Northwest corner, said corner also being a point on the Western boundary of said Block 48 having Coordinates of X = 2,605,850.00 and Y = 407,141.00; thence North 3,689.00 feet along the said Western boundary of said Block 48 to the point of beginning, **LESS AND EXCEPT** any portion of State Lease No. 2220 that may lie within the above described tract, containing approximately **24 acres**, all as more particularly outlined on a plat on file in the Office of Mineral Resources, Department of Natural Resources, as provided by the applicant. All bearings, distances and coordinates are based on Louisiana Coordinate System of 1927, (North or South Zone), where applicable.

NOTE: The above description of the Tract nominated for lease has been provided and corrected, where required, exclusively by the nomination party. Any mineral lease selected from this Tract and awarded by the Louisiana State Mineral Board shall be without warranty of any kind, either express, implied, or statutory, including, but not limited to, the implied warranties of merchantability and fitness for a particular purpose. Should the mineral lease awarded by the Louisiana State Mineral Board be subsequently modified, cancelled or abrogated due to the existence of conflicting leases, operating agreements, private claims or other future obligations or conditions which may affect all or any portion of the leased Tract, it shall not relieve the Lessee of the obligation to pay any bonus due thereon to the Louisiana State Mineral Board, nor shall the Louisiana State Mineral Board be obligated to refund any consideration paid by the Lessor prior to such modification, cancellation, or abrogation, including, but not limited to, bonuses, rentals and royalties.

NOTE: The Department of Wildlife and Fisheries has designated certain areas in the coastal waters of the State of Louisiana as Oyster Seed Bed

Areas. The exact location of those Seed Bed Areas must be obtained from the Department of Wildlife and Fisheries and any work done under a mineral lease from the State of Louisiana may necessarily be conducted in conformity with the rules and regulations promulgated by the said Department of Wildlife and Fisheries for Oyster Seed Bed Areas.

NOTE: The State of Louisiana does hereby reserve, and this lease shall be subject to, the imprescriptible right of surface use in the nature of a servitude in favor of the Department of Natural Resources, including its Offices and Commissions, for the sole purpose of implementing, constructing, servicing and maintaining approved coastal zone management and/or restoration projects. Utilization of any and all rights derived under this lease by the mineral lessee, its agents, successors or assigns, shall not interfere with nor hinder the reasonable surface use by the Department of Natural Resources, its Offices or Commissions, as herein above reserved.

Applicant: Stephen M. Jenkins & Associates, Inc.

ST. BERNARD PARISH

TR 35392
24 ± ACS.
APR., 2003

Present-Day
Shoreline

SL 2220

1952 Approximate
Shoreline

SL 17002



1000

0

1000 Feet