

TRACT 35371 - St. Martin Parish, Louisiana

All of the lands now or formerly constituting the beds and bottoms of all water bodies of every nature and description, and all islands and other lands formed by accretion, where allowed by law, or by reliction, and excepting tax adjudicated lands, belonging to the State of Louisiana and not presently under mineral lease on April 9, 2003, situated in St. Martin Parish, Louisiana, and more particularly described as follows: Beginning at a point having Coordinates of X = 1,890,147.80 and Y = 575,756.73; thence East 6,922.26 feet to a point having Coordinates of X = 1,897,070.07 and Y = 575,756.73; thence South 6,133.18 feet to a point having Coordinates of X = 1,897,070.07 and Y = 569,623.54; thence West approximately 2,888 feet to a point on the East line of the Eastern portion of State Lease No. 3435, as amended; thence along the boundaries of said State Lease No. 3435 the following: Northerly, Northwesterly, Westerly and Southwesterly to a point on the North boundary of said State Lease No. 3435 having a Coordinate of X = 1,890,147.80; thence North approximately 3,286 feet to the point of beginning, containing approximately **44 acres**, all as more particularly outlined on a plat on file in the Office of Mineral Resources, Department of Natural Resources, as provided by the applicant. All bearings, distances and coordinates are based on Louisiana Coordinate System of 1927, (North or South Zone), where applicable.

NOTE: The above description of the Tract nominated for lease has been provided and corrected, where required, exclusively by the nomination party. Any mineral lease selected from this Tract and awarded by the Louisiana State Mineral Board shall be without warranty of any kind, either express, implied, or statutory, including, but not limited to, the implied warranties of merchantability and fitness for a particular purpose. Should the mineral lease awarded by the Louisiana State Mineral Board be subsequently modified, cancelled or abrogated due to the existence of conflicting leases, operating agreements, private claims or other future obligations or conditions which may affect all or any portion of the leased Tract, it shall not relieve the Lessee of the obligation to pay any bonus due thereon to the Louisiana State Mineral Board, nor shall the Louisiana State Mineral Board be obligated to refund any consideration paid by the Lessor prior to such modification, cancellation, or abrogation, including, but not limited to, bonuses, rentals and royalties.

Applicant: Mark A. O'Neal & Associates, Inc.

T9S-R8E

St. Martin Parish, Louisiana



Scale: 1" = 2,000'

POB X=1,890,147.80
Y=575,756.73

X=1,897,070.07
Y=575,756.73

TR 35371
44 ± ACS.
APR., 2003

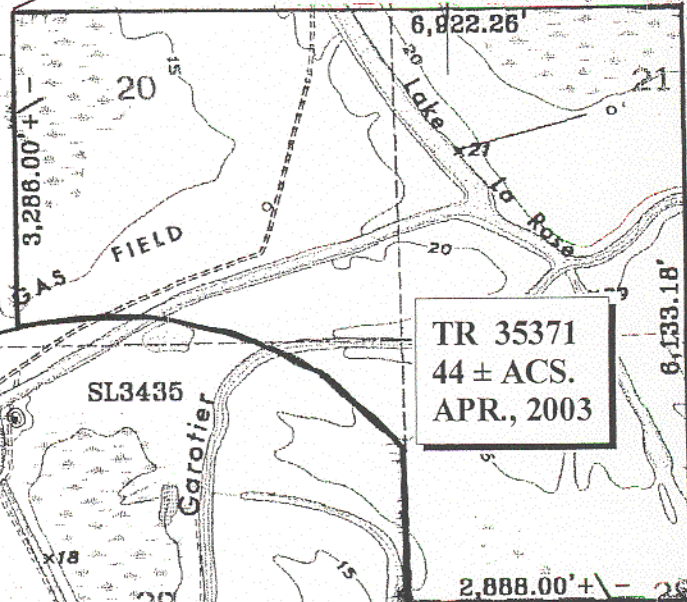
X=1,897,070.07
Y=569,623.54

6,922.26'

3,288.00' +

6,433.18'

2,888.00' +



TRACT 35372 - Iberia Parish, Louisiana

All of the lands now or formerly constituting the beds and bottoms of all water bodies of every nature and description, and all islands and other lands formed by accretion, where allowed by law, or by reliction, and excepting tax adjudicated lands, belonging to the State of Louisiana and not presently under mineral lease on April 9, 2003, situated in Iberia Parish, Louisiana, and more particularly described as follows: Beginning at a point having Coordinates of X = 1,900,000.00 and Y = 304,900.00; thence West 7,000.00 feet to a point having Coordinates of X = 1,893,000.00 and Y = 304,900.00; thence North 5,300.00 feet to a point having Coordinates of X = 1,893,000.00 and Y = 310,200.00; thence East 7,000.00 feet to a point having Coordinates of X = 1,900,000.00 and Y = 310,200.00; thence South 5,300.00 feet to the point of beginning, containing approximately **851.70 acres**, all as more particularly outlined on a plat on file in the Office of Mineral Resources, Department of Natural Resources, as provided by the applicant. All bearings, distances and coordinates are based on Louisiana Coordinate System of 1927, (North or South Zone), where applicable.

NOTE: The above description of the Tract nominated for lease has been provided and corrected, where required, exclusively by the nomination party. Any mineral lease selected from this Tract and awarded by the Louisiana State Mineral Board shall be without warranty of any kind, either express, implied, or statutory, including, but not limited to, the implied warranties of merchantability and fitness for a particular purpose. Should the mineral lease awarded by the Louisiana State Mineral Board be subsequently modified, cancelled or abrogated due to the existence of conflicting leases, operating agreements, private claims or other future obligations or conditions which may affect all or any portion of the leased Tract, it shall not relieve the Lessee of the obligation to pay any bonus due thereon to the Louisiana State Mineral Board, nor shall the Louisiana State Mineral Board be obligated to refund any consideration paid by the Lessor prior to such modification, cancellation, or abrogation, including, but not limited to, bonuses, rentals and royalties.

NOTE: The Department of Wildlife and Fisheries has designated certain areas in the coastal waters of the State of Louisiana as Oyster Seed Bed Areas. The exact location of those Seed Bed Areas must be obtained from the Department of Wildlife and Fisheries and any work done under a mineral lease from the State of Louisiana may necessarily be conducted in conformity with the rules and regulations promulgated by the said Department of Wildlife and Fisheries for Oyster Seed Bed Areas.

NOTE: The State of Louisiana does hereby reserve, and this lease shall be subject to, the imprescriptible right of surface use in the nature of a servitude in favor of the Department of Natural Resources, including its Offices and Commissions, for the sole purpose of implementing, constructing, servicing and maintaining approved coastal zone management and/or restoration projects. Utilization of any and all rights derived under this lease by the mineral lessee, its agents, successors or assigns, shall not interfere with nor hinder the reasonable surface use by the Department of Natural Resources, its Offices or Commissions, as herein above reserved.

Applicant: C.R. Anderson

EAST COTE BLANCHE BAY

WAD 1927 (South Zone)

P&E
TIES 4 | 3

TR 35372
851.70 ± ACS.
APR., 2003

Bluff Rocks

P.O.B.

X = 1,900,000.00
Y = 304,900.00

S. L. 11284

50

IBERIA PARISH, LOUISIANA

SCALE : 1" = 2000'

TRACT 35373 - Assumption Parish, Louisiana

All of the lands now or formerly constituting the beds and bottoms of all water bodies of every nature and description, and all islands and other lands formed by accretion, where allowed by law, or by reliction, and excepting tax adjudicated lands, belonging to the State of Louisiana and not presently under mineral lease on April 9, 2003, situated in Assumption Parish, Louisiana, and more particularly described as follows: Beginning at a point having Coordinates of X = 2,046,200.00 and Y = 460,600.00; thence North 3,600.00 feet to a point having Coordinates X = 2,046,200.00 and Y = 464,200.00; thence East 10,400.00 feet to a point having Coordinates X = 2,056,600.00 and Y = 464,200.00; thence South 3,600.00 feet to a point having Coordinates X = 2,056,600.00 and Y = 460,600.00; thence West 10,400.00 feet to the point of beginning, containing approximately **607.00 acres**, all as more particularly outlined on a plat on file in the Office of Mineral Resources, Department of Natural Resources, as provided by the applicant. All bearings, distances and coordinates are based on Louisiana Coordinate System of 1927, (North or South Zone), where applicable.

NOTE: The above description of the Tract nominated for lease has been provided and corrected, where required, exclusively by the nomination party. Any mineral lease selected from this Tract and awarded by the Louisiana State Mineral Board shall be without warranty of any kind, either express, implied, or statutory, including, but not limited to, the implied warranties of merchantability and fitness for a particular purpose. Should the mineral lease awarded by the Louisiana State Mineral Board be subsequently modified, cancelled or abrogated due to the existence of conflicting leases, operating agreements, private claims or other future obligations or conditions which may affect all or any portion of the leased Tract, it shall not relieve the Lessee of the obligation to pay any bonus due thereon to the Louisiana State Mineral Board, nor shall the Louisiana State Mineral Board be obligated to refund any consideration paid by the Lessor prior to such modification, cancellation, or abrogation, including, but not limited to, bonuses, rentals and royalties.

NOTE: The State of Louisiana does hereby reserve, and this lease shall be subject to, the imprescriptible right of surface use in the nature of a servitude in favor of the Department of Natural Resources, including its Offices and Commissions, for the sole purpose of implementing, constructing, servicing and maintaining approved coastal zone management and/or restoration projects. Utilization of any and all rights derived under this lease by the mineral lessee, its agents, successors or assigns, shall not interfere with nor hinder the reasonable surface use by the

Department of Natural Resources, its Offices or Commissions, as herein above reserved.

Applicant: Janus Exploration, Inc.

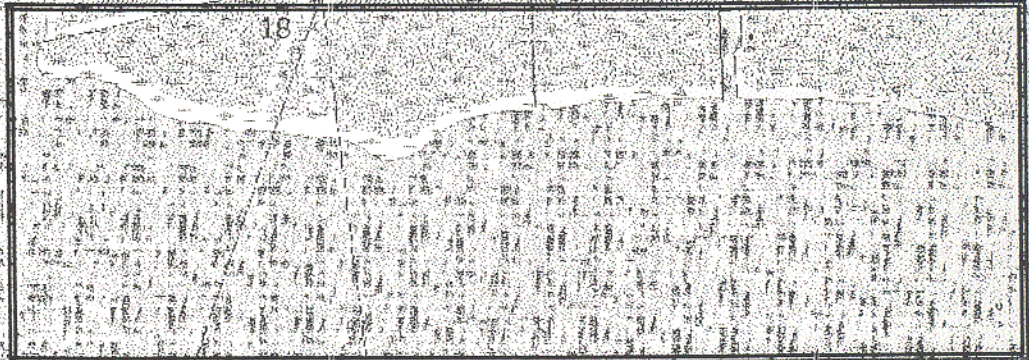
SL 17334

T 13 S - R 12 E

T 13 S - R 13 E

X = 2,046,200.00
Y = 464,200.00

X = 2,056,600.00
Y = 464,200.00



P.O.B.
X = 2,046,200.00
Y = 460,600.00

X = 2,056,600.00
Y = 460,600.00

TR 35373
607 ± ACS.
APR., 2003



Assumption Parish, Louisiana



TRACT 35374 - Assumption Parish, Louisiana

All of the lands now or formerly constituting the beds and bottoms of all water bodies of every nature and description, and all islands and other lands formed by accretion, where allowed by law, or by reliction, and excepting tax adjudicated lands, belonging to the State of Louisiana and not presently under mineral lease on April 9, 2003, situated in Assumption Parish, Louisiana, and more particularly described as follows: Beginning at a point having Coordinates of X = 2,044,500.00 and Y = 457,000.00; thence North 2,900.00 feet to a point having Coordinates X = 2,044,500.00 and Y = 459,900.00; thence East 1,700.00 feet to a point having Coordinates X = 2,046,200.00 and Y = 459,900.00; thence North 700.00 feet to a point having Coordinates X = 2,046,200.00 and Y = 460,600.00; thence West 10,400.00 feet to a point having Coordinates X = 2,056,600.00 and Y = 460,600.00; thence South 3,600.00 feet to a point having Coordinates X = 2,056,600.00 and Y = 457,000.00; thence West 12,100.00 feet to the point of beginning, containing approximately **870.00 acres**, all as more particularly outlined on a plat on file in the Office of Mineral Resources, Department of Natural Resources, as provided by the applicant. All bearings, distances and coordinates are based on Louisiana Coordinate System of 1927, (North or South Zone), where applicable.

NOTE: The above description of the Tract nominated for lease has been provided and corrected, where required, exclusively by the nomination party. Any mineral lease selected from this Tract and awarded by the Louisiana State Mineral Board shall be without warranty of any kind, either express, implied, or statutory, including, but not limited to, the implied warranties of merchantability and fitness for a particular purpose. Should the mineral lease awarded by the Louisiana State Mineral Board be subsequently modified, cancelled or abrogated due to the existence of conflicting leases, operating agreements, private claims or other future obligations or conditions which may affect all or any portion of the leased Tract, it shall not relieve the Lessee of the obligation to pay any bonus due thereon to the Louisiana State Mineral Board, nor shall the Louisiana State Mineral Board be obligated to refund any consideration paid by the Lessor prior to such modification, cancellation, or abrogation, including, but not limited to, bonuses, rentals and royalties.

NOTE: The State of Louisiana does hereby reserve, and this lease shall be subject to, the imprescriptible right of surface use in the nature of a servitude in favor of the Department of Natural Resources, including its Offices and Commissions, for the sole purpose of implementing, constructing, servicing and maintaining approved coastal zone management and/or restoration projects. Utilization of any and all rights derived under this lease by the mineral lessee, its agents, successors or assigns,

shall not interfere with nor hinder the reasonable surface use by the Department of Natural Resources, its Offices or Commissions, as herein above reserved.

Applicant: Janus Exploration, Inc.

T 13 S - R 12 E

T 13 S - R 13 E

X = 2,044,500.00
Y = 459,900.00

X = 2,046,200.00
Y = 460,600.00

X = 2,056,600.00
Y = 460,600.00

1,700.00'

X = 2,046,200.00
Y = 459,900.00

2,900.00'

3,600.00'

12,100.00'

P.O.B.
X = 2,044,500.00
Y = 457,000.00

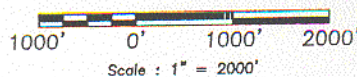
X = 2,056,600.00
Y = 457,000.00

TR 35374
870 ± ACS.
APR., 2003

SL 346
As Amended



Assumption Parish, Louisiana



Scale : 1" = 2000'

TRACT 35375 - Assumption Parish, Louisiana

All of the lands now or formerly constituting the beds and bottoms of all water bodies of every nature and description, and all islands and other lands formed by accretion, where allowed by law, or by reliction, and excepting tax adjudicated lands, belonging to the State of Louisiana and not presently under mineral lease on April 9, 2003, situated in Assumption Parish, Louisiana, and more particularly described as follows: Beginning at a point on the Eastern boundary line of State Lease No. 346, as amended, having Coordinates of X = 2,046,870.59 and Y = 453,400.00; thence North 1,133.69 feet along said Eastern boundary of said State Lease No. 346 to a point having Coordinates of X = 2,046,870.59 and Y = 454,533.69; thence West 2,370.59 feet along the Northern boundary line of State Lease No. 346 to a point having Coordinates of X = 2,044,500.00 and Y = 454,533.69; thence North 2,468.00 feet to a point having Coordinates of X = 2,044,500.00 and Y = 457,000.00; thence East 12,100.00 feet to the point having Coordinates of X = 2,056,600.00 and Y = 457,000.00; thence South 3,600.00 feet to a point having Coordinates of X = 2,056,600.00 and Y = 453,400.00; thence West 9,729.41 feet to the point of beginning, **LESS AND EXCEPT**, if any, that portion of State Lease No. 346, as amended, that may lie within the above described tract and containing approximately **922.00 acres**, all as more particularly outlined on a plat on file in the Office of Mineral Resources, Department of Natural Resources, as provided by the applicant. All bearings, distances and coordinates are based on Louisiana Coordinate System of 1927, (North or South Zone), where applicable.

NOTE: The above description of the Tract nominated for lease has been provided and corrected, where required, exclusively by the nomination party. Any mineral lease selected from this Tract and awarded by the Louisiana State Mineral Board shall be without warranty of any kind, either express, implied, or statutory, including, but not limited to, the implied warranties of merchantability and fitness for a particular purpose. Should the mineral lease awarded by the Louisiana State Mineral Board be subsequently modified, cancelled or abrogated due to the existence of conflicting leases, operating agreements, private claims or other future obligations or conditions which may affect all or any portion of the leased Tract, it shall not relieve the Lessee of the obligation to pay any bonus due thereon to the Louisiana State Mineral Board, nor shall the Louisiana State Mineral Board be obligated to refund any consideration paid by the Lessor prior to such modification, cancellation, or abrogation, including, but not limited to, bonuses, rentals and royalties.

NOTE: The State of Louisiana does hereby reserve, and this lease shall be subject to, the imprescriptible right of surface use in the nature of a servitude in favor of the Department of Natural Resources, including its

Offices and Commissions, for the sole purpose of implementing, constructing, servicing and maintaining approved coastal zone management and/or restoration projects. Utilization of any and all rights derived under this lease by the mineral lessee, its agents, successors or assigns, shall not interfere with nor hinder the reasonable surface use by the Department of Natural Resources, its Offices or Commissions, as herein above reserved.

Applicant: Janus Exploration, Inc.

T 13 S - R 12 E

T 13 S - R 13 E

X = 2,044,500.00
Y = 457,000.00

X = 2,056,600.00
Y = 457,000.00

12,100.00'

2,468.00'

2,370.59'

X = 2,046,870.59
Y = 454,533.69

3,600.00'

1,133.69'

9,729.41'

X = 2,056,600.00
Y = 453,400.00

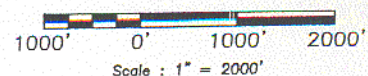
SL 346
As Amended

P.O.B.
X = 2,046,870.59
Y = 453,400.00

TR 35375
922 ± ACS.
APR., 2003



Assumption Parish, Louisiana



TRACT 35376 - Portion of Block 20, Ship Shoal Area, Terrebonne Parish, Louisiana

All of the lands now or formerly constituting the beds and bottoms of all water bodies of every nature and description, and all islands and other lands formed by accretion, where allowed by law, or by reliction, and excepting tax adjudicated lands, belonging to the State of Louisiana and not presently under mineral lease on April 9, 2003, situated in Terrebonne Parish, Louisiana, and more particularly described as follows: Beginning at a point having Coordinates of X = 2,133,179.56 and Y = 178,608.51, also being the Southwest corner of State Lease No. 16969; thence North 89 degrees 45 minutes 33 seconds East 6,139.30 feet to a point being the Southeast corner of said State Lease No. 16969, also being the Southwest corner of State Lease No. 200, as amended, having Coordinates of X = 2,139,318.81 and Y = 178,634.32; thence North 89 degrees 45 minutes 33 seconds East 4,281.23 feet along the South line of said State Lease No. 200 to a point having Coordinates of X = 2,143,600.00 and Y = 178,652.32; thence South 2,652.32 feet to a point being the Northeast corner of State Lease No. 16293 having Coordinates of X = 2,143,600.00 and Y = 176,000.00; thence West 1,700.00 feet to a point being the Northwest corner of said State Lease No. 16293, also being the Northeast corner of State Lease No. 15784, having Coordinates of X = 2,141,900.00 and Y = 176,000.00; thence West 3,400.00 feet to a point being the Northwest corner of said State Lease No. 15784 having Coordinates of X = 2,138,500.00 and Y = 176,000.00; thence South 4,600.00 feet to a point being the Southwest corner of said State Lease No. 15784, also being on the North line of State Lease No. 16282 having Coordinates of X = 2,138,500.00 and Y = 171,400.00; thence West 2,456.30 feet to a point being the Northwest corner of State Lease No. 16282 having Coordinates of X = 2,136,043.70 and Y = 171,400.00; thence South 79 degrees 27 minutes 26 seconds West 1,908.37 feet to a point having Coordinates of X = 2,134,167.55 and Y = 171,050.82; thence North 1,548.57 feet to a point having Coordinates of X = 2,134,167.55 and Y = 172,599.40; thence West 872.55 feet to a point having Coordinates of X = 2,133,295.00 and Y = 172,599.40; thence North 01 degrees 06 minutes 02 seconds West 6,010.22 feet to the point of beginning, containing approximately **457.90 acres**, all as more particularly outlined on a plat on file in the Office of Mineral Resources, Department of Natural Resources, as provided by the applicant. All bearings, distances and coordinates are based on Louisiana Coordinate System of 1927, (North or South Zone), where applicable.

NOTE: The above description of the Tract nominated for lease has been provided and corrected, where required, exclusively by the nomination party. Any mineral lease selected from this Tract and awarded by the Louisiana State Mineral Board shall be without warranty of any kind,

either express, implied, or statutory, including, but not limited to, the implied warranties of merchantability and fitness for a particular purpose. Should the mineral lease awarded by the Louisiana State Mineral Board be subsequently modified, cancelled or abrogated due to the existence of conflicting leases, operating agreements, private claims or other future obligations or conditions which may affect all or any portion of the leased Tract, it shall not relieve the Lessee of the obligation to pay any bonus due thereon to the Louisiana State Mineral Board, nor shall the Louisiana State Mineral Board be obligated to refund any consideration paid by the Lessor prior to such modification, cancellation, or abrogation, including, but not limited to, bonuses, rentals and royalties.

NOTE: The Department of Wildlife and Fisheries has designated certain areas in the coastal waters of the State of Louisiana as Oyster Seed Bed Areas. The exact location of those Seed Bed Areas must be obtained from the Department of Wildlife and Fisheries and any work done under a mineral lease from the State of Louisiana may necessarily be conducted in conformity with the rules and regulations promulgated by the said Department of Wildlife and Fisheries for Oyster Seed Bed Areas.

NOTE: The State of Louisiana does hereby reserve, and this lease shall be subject to, the imprescriptible right of surface use in the nature of a servitude in favor of the Department of Natural Resources, including its Offices and Commissions, for the sole purpose of implementing, constructing, servicing and maintaining approved coastal zone management and/or restoration projects. Utilization of any and all rights derived under this lease by the mineral lessee, its agents, successors or assigns, shall not interfere with nor hinder the reasonable surface use by the Department of Natural Resources, its Offices or Commissions, as herein above reserved.

Applicant: Jason Cummings

T22S-R15E

62

P.O.B.
X = 2,133,179.56
Y = 178,608.51

SL 16969

SL 200

TR 35376
457.90 ± ACS.
APR., 2003

SL 15784

SL 16293

BLOCK 20
SHIP SHOAL AREA

SL 16282

BLOCK 23
SHIP SHOAL AREA

REFERENCE MAP: GRAND_BAYOU_DU_LARGE_SE_DOQQ 29090B8

T22S-R15E AND A
PORTION OF BLOCK 20 SHIP SHOAL AREA
TERREBONNE PARISH, LOUISIANA



LOUISIANA COORDINATE SYSTEM NAD27(SOUTH ZONE)

TRACT 35377 - Terrebonne Parish, Louisiana

All of the lands now or formerly constituting the beds and bottoms of all water bodies of every nature and description, and all islands and other lands formed by accretion, where allowed by law, or by reliction, and excepting tax adjudicated lands, belonging to the State of Louisiana and not presently under mineral lease on April 9, 2003, situated in Terrebonne Parish, Louisiana, and more particularly described as follows: Beginning at a point having Coordinates of X = 2,144,576.57 and Y = 183,936.47 being the furthest South Northwest corner of State Lease No. 200; thence North 89 degrees 45 minutes 33 seconds East 4,080.00 feet to a point on the South line of said State Lease No. 200 having Coordinates of X = 2,148,656.53 and Y = 183,953.62; thence South 00 degrees 14 minutes 27 seconds East 5,280.00 feet to a point having Coordinates of X = 2,148,678.73 and Y = 178,673.66; thence South 89 degrees 45 minutes 33 seconds West 4,080.00 feet to the most Westerly Southeast corner of said State Lease No. 200 having Coordinates of X = 2,144,598.76 and Y = 178,656.51; thence North 00 degrees 14 minutes 27 seconds West 5,280.00 feet on the furthest West East line of said State Lease No. 200 to the point of beginning, containing approximately **71.87 acres**, all as more particularly outlined on a plat on file in the Office of Mineral Resources, Department of Natural Resources, as provided by the applicant. All bearings, distances and coordinates are based on Louisiana Coordinate System of 1927, (North or South Zone), where applicable.

NOTE: The above description of the Tract nominated for lease has been provided and corrected, where required, exclusively by the nomination party. Any mineral lease selected from this Tract and awarded by the Louisiana State Mineral Board shall be without warranty of any kind, either express, implied, or statutory, including, but not limited to, the implied warranties of merchantability and fitness for a particular purpose. Should the mineral lease awarded by the Louisiana State Mineral Board be subsequently modified, cancelled or abrogated due to the existence of conflicting leases, operating agreements, private claims or other future obligations or conditions which may affect all or any portion of the leased Tract, it shall not relieve the Lessee of the obligation to pay any bonus due thereon to the Louisiana State Mineral Board, nor shall the Louisiana State Mineral Board be obligated to refund any consideration paid by the Lessor prior to such modification, cancellation, or abrogation, including, but not limited to, bonuses, rentals and royalties.

NOTE: The Department of Wildlife and Fisheries has designated certain areas in the coastal waters of the State of Louisiana as Oyster Seed Bed Areas. The exact location of those Seed Bed Areas must be obtained from the Department of Wildlife and Fisheries and any work done under a mineral

lease from the State of Louisiana may necessarily be conducted in conformity with the rules and regulations promulgated by the said Department of Wildlife and Fisheries for Oyster Seed Bed Areas.

NOTE: The State of Louisiana does hereby reserve, and this lease shall be subject to, the imprescriptible right of surface use in the nature of a servitude in favor of the Department of Natural Resources, including its Offices and Commissions, for the sole purpose of implementing, constructing, servicing and maintaining approved coastal zone management and/or restoration projects. Utilization of any and all rights derived under this lease by the mineral lessee, its agents, successors or assigns, shall not interfere with nor hinder the reasonable surface use by the Department of Natural Resources, its Offices or Commissions, as herein above reserved.

Applicant: Jason Cummings

T22S-R15E

65

P.O.B.
X = 2,144,576.57
Y = 183,936.47

SL 200

TR 35377
71.87 ± ACS.
APR., 2003

SL 200

LOUISIANA COORDINATE SYSTEM NAD27(SOUTH ZONE)

REFERENCE MAP: DGL VU22

T22S-R15E
TERREBONNE PARISH, LOUISIANA



TRACT 35378 - Jefferson Parish, Louisiana

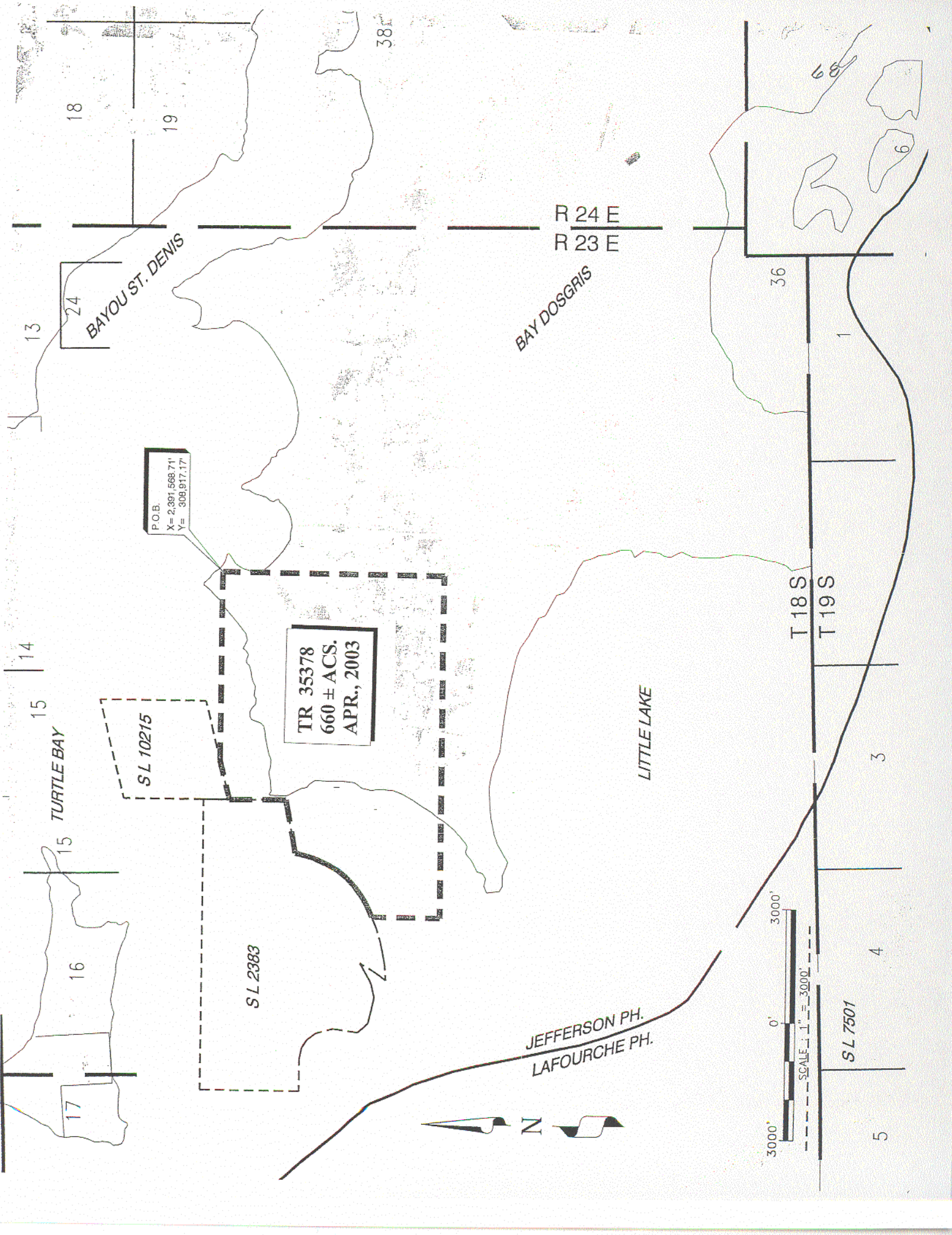
All of the lands now or formerly constituting the beds and bottoms of all water bodies of every nature and description, and all islands and other lands formed by accretion, where allowed by law, or by reliction, and excepting tax adjudicated lands, belonging to the State of Louisiana and not presently under mineral lease on April 9, 2003, situated in Jefferson Parish, Louisiana, and more particularly described as follows: Beginning at a point having Coordinates of X = 2,391,568.71 and Y = 308,917.17; thence South 5,668.56 feet to a point having Coordinates of X = 2,391,568.71 and Y = 303,248.61; thence West 9,000.00 feet to a point having Coordinates of X = 2,382,568.71 and Y = 303,248.61; thence North 1742.46 feet to a point on the Southerly line of State Lease No. 2383, as amended, having Coordinates of X = 2,382,568.71 and Y = 304,991.07; thence along the southerly boundary of said State Lease No. 2383 the following courses: North 67 degrees 14 minutes 56 seconds East 23.09 feet to a point having Coordinates of X = 2,382,590.00 and Y = 305,000.00; North 65 degrees 33 minutes 22 seconds East 362.49 feet to a point having Coordinates of X = 2,382,920.00 and Y = 305,150.00; North 57 degrees 08 minutes 39 seconds East 285.70 feet to a point having Coordinates of X = 2,383,160.00 and Y = 305,305.00; North 53 degrees 34 minutes 09 seconds East 261.01 feet to a point having Coordinates of X = 2,383,370.00 and Y = 305,460.00; North 46 degrees 21 minutes 50 seconds East 297.07 feet to a point having Coordinates of X = 2,383,585.00 and Y = 305,665.00; North 39 degrees 25 minutes 40 seconds East 291.29 feet to a point having Coordinates of X = 2,383,770.00 and Y = 305,890.00; North 31 degrees 07 minutes 23 seconds East 309.56 feet to a point having Coordinates of X = 2,383,930.01 and Y = 306,155.01; North 25 degrees 25 minutes 37 seconds East 337.71 feet to a point having Coordinates of X = 2,384,075.01 and Y = 306,460.00; North 17 degrees 42 minutes 02 seconds East 246.68 feet to a point having Coordinates of X = 2,384,150.01 and Y = 306,695.00; North 14 degrees 02 minutes 10 seconds East 288.62 feet to a point having Coordinates of X = 2,384,220.01 and Y = 306,975.01; North 79 degrees 49 minutes 14 seconds East 1,417.29 feet to a point having Coordinates of X = 2,385,614.99 and Y = 307,225.49; North 00 degrees 35 minutes 20 seconds West 1,435.66 feet to the Southwest corner of State Lease No. 10215, as amended, having Coordinates of X = 2,385,600.23 and Y = 308,661.07; thence North 76 degrees 00 minutes 48 seconds East 1,059.58 feet along the South line of said State Lease No. 10215 having Coordinates of X = 2,386,628.40 and Y = 308,917.17; thence East 4,940.31 feet to the point of beginning, containing approximately **660 acres**, all as more particularly outlined on a plat on file in the Office of Mineral Resources, Department of Natural Resources, as provided by the applicant. All bearings, distances and coordinates are based on Louisiana Coordinate System of 1927, (North or South Zone), where applicable.

NOTE: The above description of the Tract nominated for lease has been provided and corrected, where required, exclusively by the nomination party. Any mineral lease selected from this Tract and awarded by the Louisiana State Mineral Board shall be without warranty of any kind, either express, implied, or statutory, including, but not limited to, the implied warranties of merchantability and fitness for a particular purpose. Should the mineral lease awarded by the Louisiana State Mineral Board be subsequently modified, cancelled or abrogated due to the existence of conflicting leases, operating agreements, private claims or other future obligations or conditions which may affect all or any portion of the leased Tract, it shall not relieve the Lessee of the obligation to pay any bonus due thereon to the Louisiana State Mineral Board, nor shall the Louisiana State Mineral Board be obligated to refund any consideration paid by the Lessor prior to such modification, cancellation, or abrogation, including, but not limited to, bonuses, rentals and royalties.

NOTE: The Department of Wildlife and Fisheries has designated certain areas in the coastal waters of the State of Louisiana as Oyster Seed Bed Areas. The exact location of those Seed Bed Areas must be obtained from the Department of Wildlife and Fisheries and any work done under a mineral lease from the State of Louisiana may necessarily be conducted in conformity with the rules and regulations promulgated by the said Department of Wildlife and Fisheries for Oyster Seed Bed Areas.

NOTE: The State of Louisiana does hereby reserve, and this lease shall be subject to, the imprescriptible right of surface use in the nature of a servitude in favor of the Department of Natural Resources, including its Offices and Commissions, for the sole purpose of implementing, constructing, servicing and maintaining approved coastal zone management and/or restoration projects. Utilization of any and all rights derived under this lease by the mineral lessee, its agents, successors or assigns, shall not interfere with nor hinder the reasonable surface use by the Department of Natural Resources, its Offices or Commissions, as herein above reserved.

Applicant: Cypress Energy Corporation



P.O.B.
X= 2,391,568.71
Y= 308,917.17

TR 35378
660 ± ACS.
APR., 2003

SL 10215

SL 2383

JEFFERSON PH.
LAFOURCHE PH.

LITTLE LAKE

T 18 S
T 19 S

R 24 E
R 23 E

3000'
0'
3000'
SCALE 1" = 3000'



SL 7501

TRACT 35379 - Jefferson and Lafourche Parishes, Louisiana

All of the lands now or formerly constituting the beds and bottoms of all water bodies of every nature and description, and all islands and other lands formed by accretion, where allowed by law, or by reliction, and excepting tax adjudicated lands, belonging to the State of Louisiana and not presently under mineral lease on April 9, 2003, situated in Jefferson and Lafourche Parishes, Louisiana, and more particularly described as follows: Beginning at a point having Coordinates of X = 2,393,068.71 and Y = 295,248.61; thence West 10,500.00 feet to a point having Coordinates of X = 2,382,568.71 and Y = 295,248.61; thence North 5,101.45 feet to a point on the Southerly boundary of State Lease No. 2383, as amended, having Coordinates of X = 2,382,568.71 and Y = 300,350.06; thence along the boundary of said State Lease No. 2383 the following courses: along a curve to the left having a radius of 4,025.00 feet and a long chord of South 84 degrees 49 minutes 23 seconds East 222.21 feet to a point having Coordinates of X = 2,382,790.01 and Y = 300,330.01; thence along a curve to the left having a radius of 1,025.00 feet and a long chord of North 83 degrees 17 minutes 25 seconds East 427.93 feet to a point having Coordinates of X = 2,383,215.01 and Y = 300,380.01; thence along a curve to the left having a radius of 500.00 feet and a long chord of North 47 degrees 05 minutes 02 seconds East 252.60 feet to a point having Coordinates of X = 2,383,400.00 and Y = 300,552.01; thence along a curve to the left having a radius of 1,000.00 feet and a long chord of North 04 degrees 44 minutes 52 seconds East 302.04 feet to a point having Coordinates of X = 2,383,425.00 and Y = 300,853.01; thence along a curve to the left having a radius of 2,150.00 feet and a long chord of North 27 degrees 34 minutes 53 seconds West 1,849.41 feet to a point having Coordinates of X = 2,382,568.71 and Y = 302,492.24; thence North 756.37 feet to a point having Coordinates of X = 2,382,568.71 and Y = 303,248.61; thence East 10,500.00 feet to a point having Coordinates of X = 2,393,068.71 and Y = 303,248.61; hence South 8,000.00 feet to the point of beginning, containing approximately **1,700 acres**, all as more particularly outlined on a plat on file in the Office of Mineral Resources, Department of Natural Resources, as provided by the applicant. All bearings, distances and coordinates are based on Louisiana Coordinate System of 1927, (North or South Zone), where applicable.

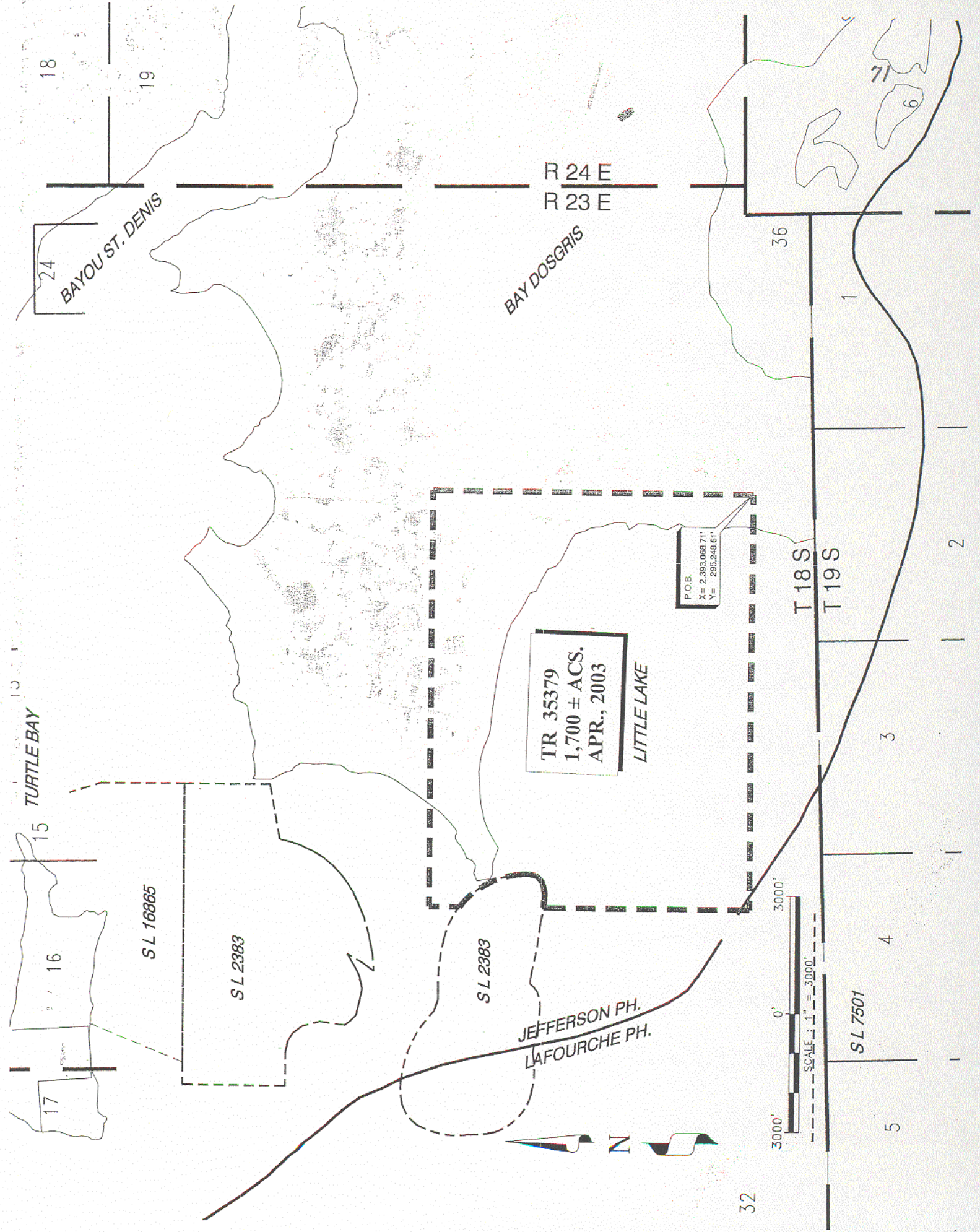
NOTE: The above description of the Tract nominated for lease has been provided and corrected, where required, exclusively by the nomination party. Any mineral lease selected from this Tract and awarded by the Louisiana State Mineral Board shall be without warranty of any kind, either express, implied, or statutory, including, but not limited to, the implied warranties of merchantability and fitness for a particular purpose. Should the mineral lease awarded by the Louisiana State Mineral

Board be subsequently modified, cancelled or abrogated due to the existence of conflicting leases, operating agreements, private claims or other future obligations or conditions which may affect all or any portion of the leased Tract, it shall not relieve the Lessee of the obligation to pay any bonus due thereon to the Louisiana State Mineral Board, nor shall the Louisiana State Mineral Board be obligated to refund any consideration paid by the Lessor prior to such modification, cancellation, or abrogation, including, but not limited to, bonuses, rentals and royalties.

NOTE: The Department of Wildlife and Fisheries has designated certain areas in the coastal waters of the State of Louisiana as Oyster Seed Bed Areas. The exact location of those Seed Bed Areas must be obtained from the Department of Wildlife and Fisheries and any work done under a mineral lease from the State of Louisiana may necessarily be conducted in conformity with the rules and regulations promulgated by the said Department of Wildlife and Fisheries for Oyster Seed Bed Areas.

NOTE: The State of Louisiana does hereby reserve, and this lease shall be subject to, the imprescriptible right of surface use in the nature of a servitude in favor of the Department of Natural Resources, including its Offices and Commissions, for the sole purpose of implementing, constructing, servicing and maintaining approved coastal zone management and/or restoration projects. Utilization of any and all rights derived under this lease by the mineral lessee, its agents, successors or assigns, shall not interfere with nor hinder the reasonable surface use by the Department of Natural Resources, its Offices or Commissions, as herein above reserved.

Applicant: Cypress Energy Corporation



TR 35379
1,700 ± ACS.
APR., 2003

P.O.B.
X= 2,393,066.71'
Y= 295,248.61'

JEFFERSON PH.
LAFORCHE PH.

3000' 0' 3000'
SCALE: 1" = 3000'

N

SL 16865

SL 2383

SL 2383

SL 7501

T 18 S

T 19 S

32

5

4

3

2

36

6

71

R 24 E
R 23 E

BAY DOSGRIS

BAYOU ST. DENIS

18

19

24

TURTLE BAY

15

16

17

TRACT 35380 - Jefferson Parish, Louisiana

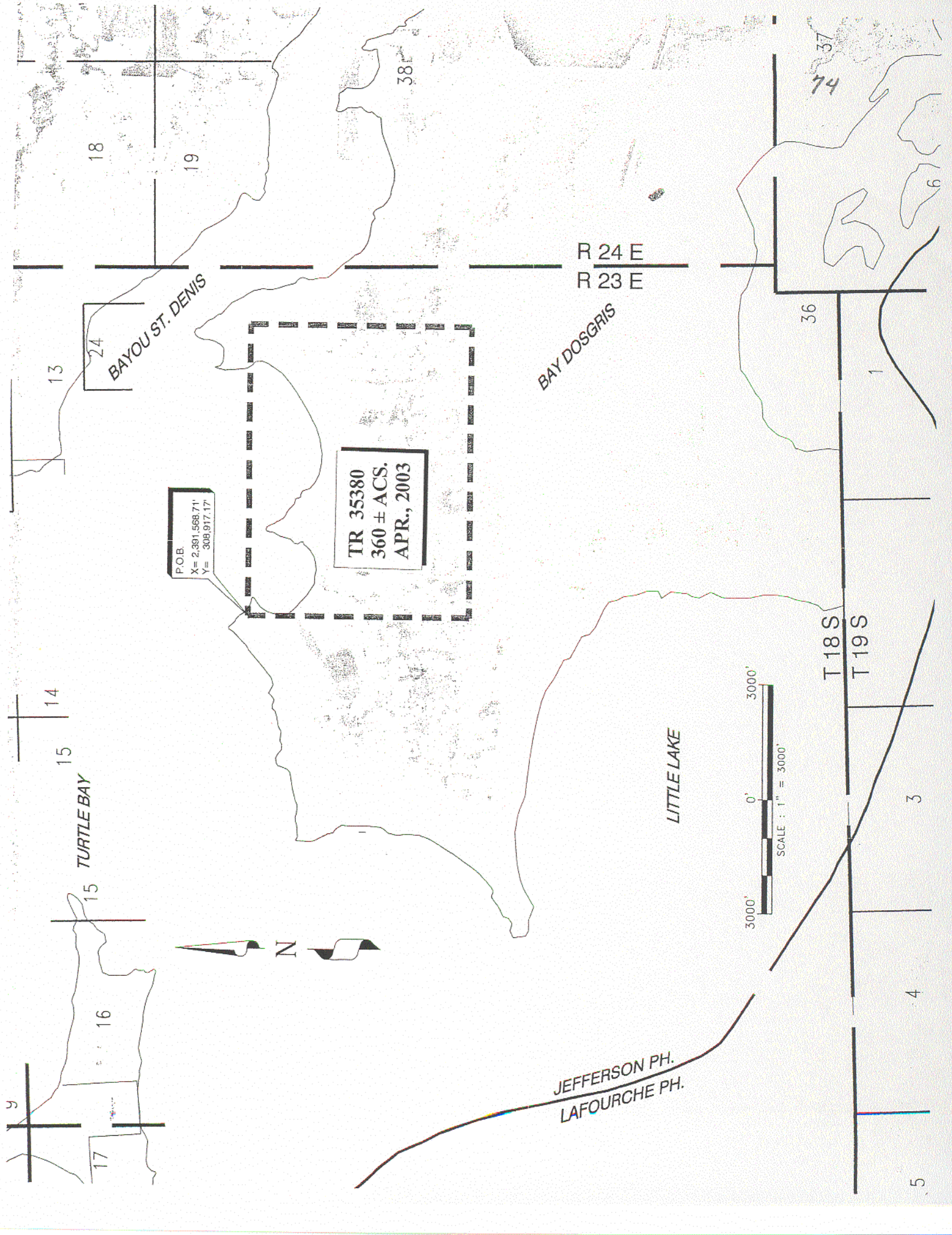
All of the lands now or formerly constituting the beds and bottoms of all water bodies of every nature and description, and all islands and other lands formed by accretion, where allowed by law, or by reliction, and excepting tax adjudicated lands, belonging to the State of Louisiana and not presently under mineral lease on April 9, 2003, situated in Jefferson Parish, Louisiana, and more particularly described as follows: Beginning at a point having Coordinates of X = 2,391,568.71 and Y = 308,917.17; thence East 7,500.00 feet to a point having Coordinates of X = 2,399,068.71 and Y = 308,917.17; thence South 5,668.56 feet to a point having Coordinates of X = 2,399,068.71 and Y = 303,248.61; thence West 7,500.00 feet to a point having Coordinates of X = 2,391,568.71 and Y = 303,248.61; thence North 5,668.56 feet to the point of beginning, containing approximately **360 acres**, all as more particularly outlined on a plat on file in the Office of Mineral Resources, Department of Natural Resources, as provided by the applicant. All bearings, distances and coordinates are based on Louisiana Coordinate System of 1927, (North or South Zone), where applicable.

NOTE: The above description of the Tract nominated for lease has been provided and corrected, where required, exclusively by the nomination party. Any mineral lease selected from this Tract and awarded by the Louisiana State Mineral Board shall be without warranty of any kind, either express, implied, or statutory, including, but not limited to, the implied warranties of merchantability and fitness for a particular purpose. Should the mineral lease awarded by the Louisiana State Mineral Board be subsequently modified, cancelled or abrogated due to the existence of conflicting leases, operating agreements, private claims or other future obligations or conditions which may affect all or any portion of the leased Tract, it shall not relieve the Lessee of the obligation to pay any bonus due thereon to the Louisiana State Mineral Board, nor shall the Louisiana State Mineral Board be obligated to refund any consideration paid by the Lessor prior to such modification, cancellation, or abrogation, including, but not limited to, bonuses, rentals and royalties.

NOTE: The Department of Wildlife and Fisheries has designated certain areas in the coastal waters of the State of Louisiana as Oyster Seed Bed Areas. The exact location of those Seed Bed Areas must be obtained from the Department of Wildlife and Fisheries and any work done under a mineral lease from the State of Louisiana may necessarily be conducted in conformity with the rules and regulations promulgated by the said Department of Wildlife and Fisheries for Oyster Seed Bed Areas.

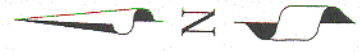
NOTE: The State of Louisiana does hereby reserve, and this lease shall be subject to, the imprescriptible right of surface use in the nature of a servitude in favor of the Department of Natural Resources, including its Offices and Commissions, for the sole purpose of implementing, constructing, servicing and maintaining approved coastal zone management and/or restoration projects. Utilization of any and all rights derived under this lease by the mineral lessee, its agents, successors or assigns, shall not interfere with nor hinder the reasonable surface use by the Department of Natural Resources, its Offices or Commissions, as herein above reserved.

Applicant: Cypress Energy Corporation



P.O.B.
X= 2,391,568.71'
Y= 308,917.17'

TR 35380
360 ± ACS.
APR., 2003



TURTLE BAY

BAYOU ST. DENIS

BAY DOSGRIS

LITTLE LAKE

JEFFERSON PH.
LAFOURCHE PH.

T 18 S
T 19 S

R 24 E
R 23 E

13

14

15

16

17

18

19

24

36

37

74

6

3

4

5

TRACT 35381 - Jefferson Parish, Louisiana

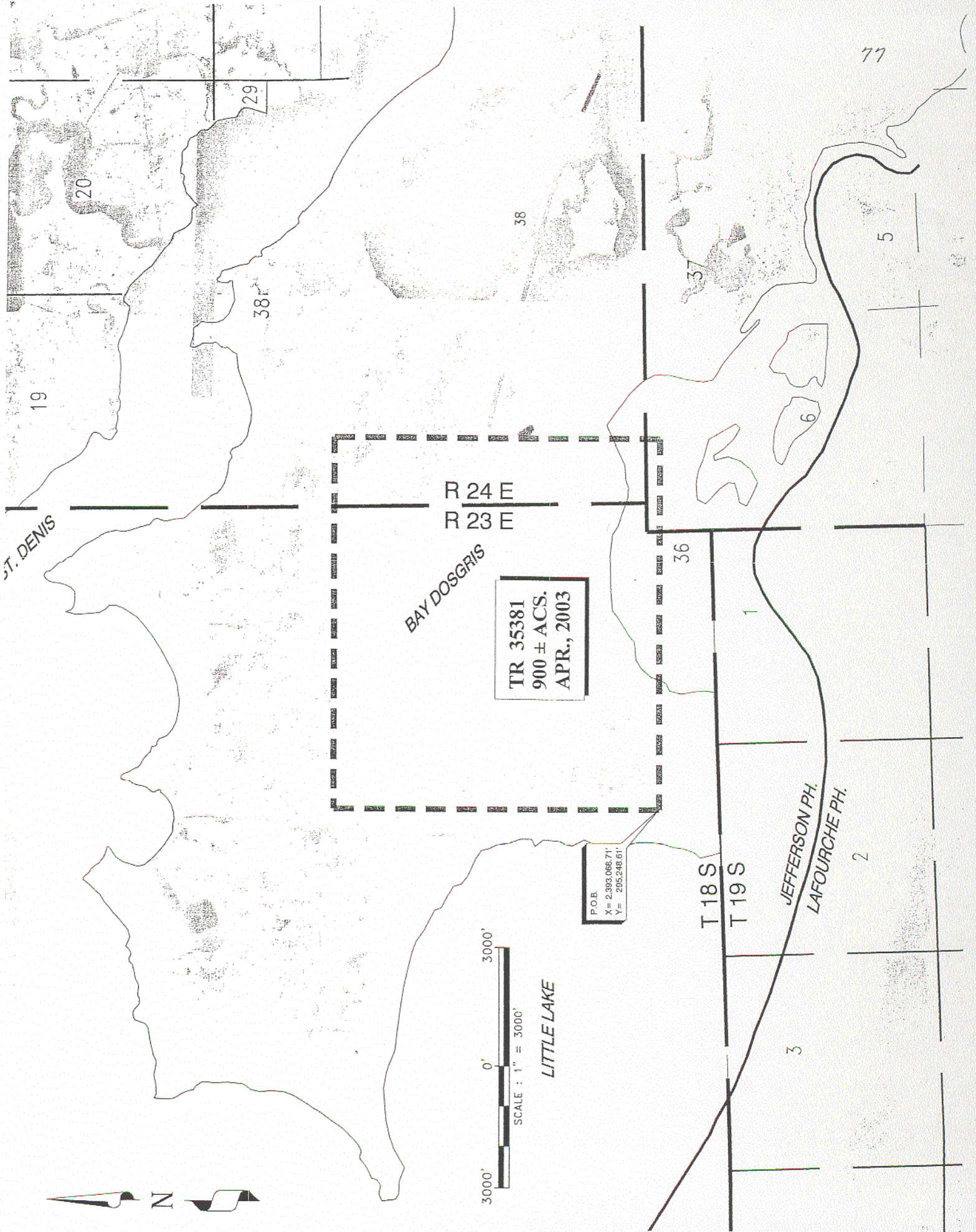
All of the lands now or formerly constituting the beds and bottoms of all water bodies of every nature and description, and all islands and other lands formed by accretion, where allowed by law, or by reliction, and excepting tax adjudicated lands, belonging to the State of Louisiana and not presently under mineral lease on April 9, 2003, situated in Jefferson Parish, Louisiana, and more particularly described as follows: Beginning at a point having Coordinates of X = 2,393,068.71 and Y = 295,248.61; thence North 8,000.00 feet to a point having Coordinates of X = 2,393,068.71 and Y = 303,248.61; thence East 9,300.00 feet to a point having Coordinates of X = 2,402,368.71 and Y = 303,248.61; thence South 8,000.00 feet to a point having Coordinates of X = 2,402,368.71 and Y = 295,248.61; thence West 9,300.00 feet to the point of beginning, containing approximately **900 acres**, all as more particularly outlined on a plat on file in the Office of Mineral Resources, Department of Natural Resources, as provided by the applicant. All bearings, distances and coordinates are based on Louisiana Coordinate System of 1927, (North or South Zone), where applicable.

NOTE: The above description of the Tract nominated for lease has been provided and corrected, where required, exclusively by the nomination party. Any mineral lease selected from this Tract and awarded by the Louisiana State Mineral Board shall be without warranty of any kind, either express, implied, or statutory, including, but not limited to, the implied warranties of merchantability and fitness for a particular purpose. Should the mineral lease awarded by the Louisiana State Mineral Board be subsequently modified, cancelled or abrogated due to the existence of conflicting leases, operating agreements, private claims or other future obligations or conditions which may affect all or any portion of the leased Tract, it shall not relieve the Lessee of the obligation to pay any bonus due thereon to the Louisiana State Mineral Board, nor shall the Louisiana State Mineral Board be obligated to refund any consideration paid by the Lessor prior to such modification, cancellation, or abrogation, including, but not limited to, bonuses, rentals and royalties.

NOTE: The Department of Wildlife and Fisheries has designated certain areas in the coastal waters of the State of Louisiana as Oyster Seed Bed Areas. The exact location of those Seed Bed Areas must be obtained from the Department of Wildlife and Fisheries and any work done under a mineral lease from the State of Louisiana may necessarily be conducted in conformity with the rules and regulations promulgated by the said Department of Wildlife and Fisheries for Oyster Seed Bed Areas.

NOTE: The State of Louisiana does hereby reserve, and this lease shall be subject to, the imprescriptible right of surface use in the nature of a servitude in favor of the Department of Natural Resources, including its Offices and Commissions, for the sole purpose of implementing, constructing, servicing and maintaining approved coastal zone management and/or restoration projects. Utilization of any and all rights derived under this lease by the mineral lessee, its agents, successors or assigns, shall not interfere with nor hinder the reasonable surface use by the Department of Natural Resources, its Offices or Commissions, as herein above reserved.

Applicant: Cypress Energy Corporation



ST. DENIS

BAY DOSGRIS

TR 35381
900 ± ACS.
APR., 2003

P.O.B.
X= 2,393,066.71'
Y= 295,248.61'

3000'
0'
SCALE : 1" = 3000'

LITTLE LAKE

T 18 S
T 19 S

JEFFERSON PH.
LAFOURCHE PH.

R 24 E
R 23 E

20

29

38

38

37

36

5

2

3

6

77