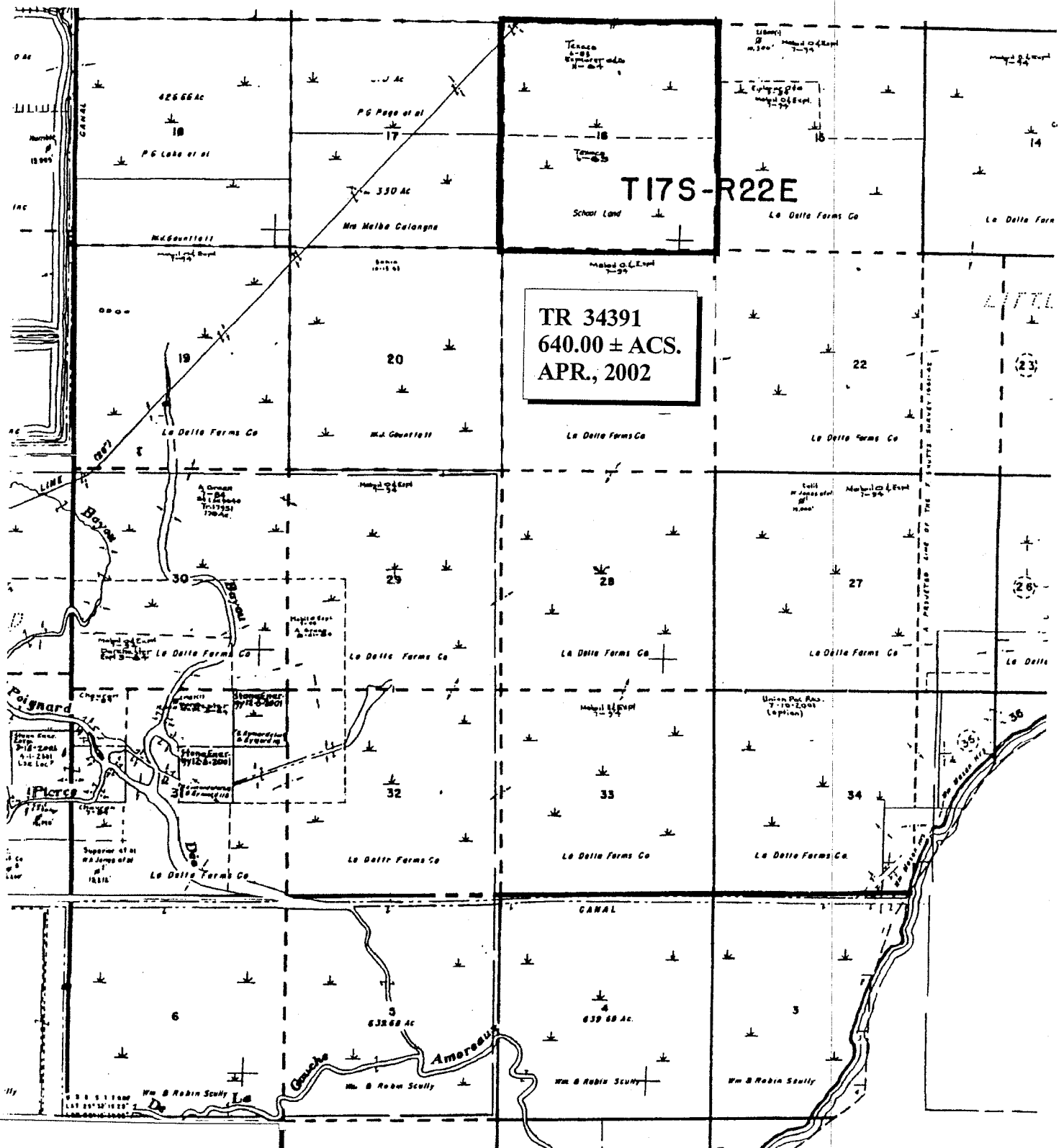


17' 16' 90°15' 14' 13'



LAFOURCHE PARISH

SCALE: 1" = 3,000'

**TRACT 34392 - STATE AGENCY - Jefferson and Plaquemines Parishes, Louisiana**

A certain tract of land belonging to and not under mineral lease from the Jefferson Parish Government and the Plaquemines Parish Government (formerly known as Plaquemines Parish Commission Council) being an undivided fifty (50%) percent interest to each said parish, on April 10, 2002, being more fully described as follows: 160.76 acres, more or less, being all of Section 44, Township 15 South, Range 24 East, Jefferson and Plaquemines Parishes, Louisiana, **LESS AND EXCEPT** 53.9488 acres conveyed to Anchor Wate Company by cash sale dated July 29, 1969, recorded in COB 339, Folio 860, by cash sale dated May 21, 1971, recorded in COB 367, Folio 104 and by cash sale dated March 28, 1973, recorded in COB 392, Folio 576, all of the records of Plaquemines Parish, Louisiana, excluding beds and bottoms of all navigable waters, containing approximately **106.8112 net acres**, as shown outlined on a plat on file in the Office of Mineral Resources, Department of Natural Resources, as provided by the applicant.

NOTE: The above description of the tract nominated for lease has been provided exclusively by the party nominating the tract for lease. The Louisiana State Mineral Board makes no representation as to the accuracy of the description of the nominated tract or its suitability for lease. The Louisiana State Mineral Board has made no inspection of the nominated tract for the existence of conflicting leases, operating agreements, private claims or other existing or future obligations or conditions which may affect all or any portion of the nominated tract or its suitability for lease.

Maps depicting the nominated tract, containing the bearings, distances and coordinates of the nominated tract based on the Louisiana Coordinate System of 1927, North or South Zone, as applicable, are available for public inspection and review at the offices of the Louisiana State Mineral Board from 10:00 a.m. to 3:00 p.m. Monday - Friday.

In the event of conflict between the description of the nominated tract set forth above and the description of the nominated property as contained on the maps maintained at the offices of the Louisiana State Mineral Board, the Louisiana State Mineral Board maps shall prevail and shall provide the final property description of the lease to be awarded of the nominated tract.

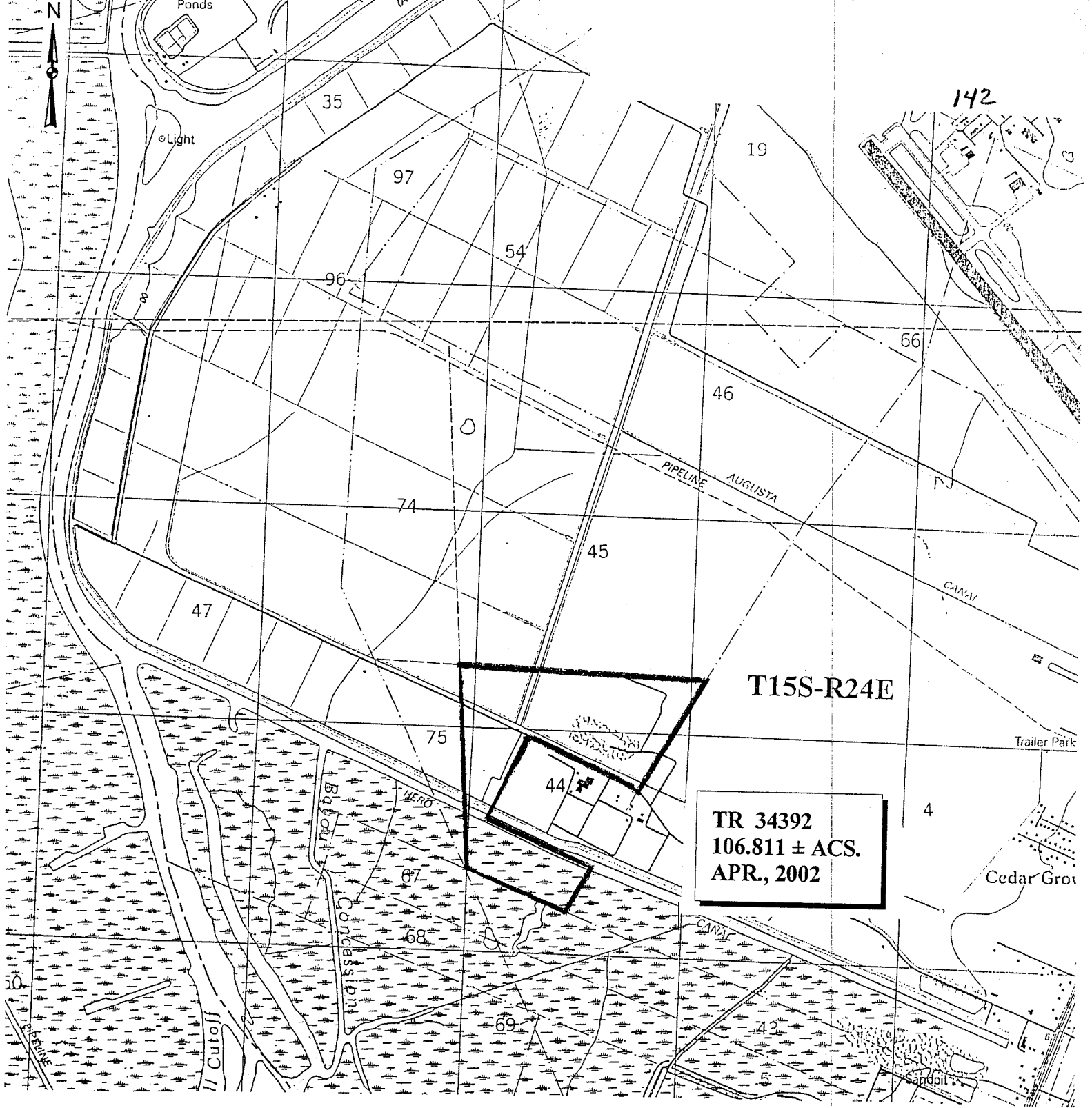
Any mineral lease of the nominated tract by the Louisiana State Mineral Board shall be without warranty of any kind, either express, implied, or statutory, including, but not limited to, the implied warranties or merchantability and fitness for a particular purpose. Should the mineral lease of the nominated tract awarded by the Louisiana State Mineral Board be subsequently modified, cancelled or abrogated due to the existence of conflicting leases, operating agreements, private claims or other existing of future obligations or conditions which may affect all or any portion of the leased tract, it shall not relieve the Lessee of the obligation to pay any bonus due thereon to the Louisiana State Mineral Board, nor shall the Louisiana State Mineral Board be obligated to refund any consideration paid by the Lessee prior to such modification, cancellation, or abrogation, including, but not limited to, bonuses, rents and royalties.

NOTE: The Jefferson Parish Government and the Plaquemines Parish Government are requesting the following to be incorporated:

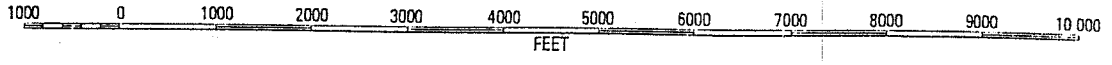
1. 25% of all gas and oil produced and saved.
2. 25% of the value per long ton of sulphur produced and saved which shall yield not less than \$2.00 per long ton.
3. 25% of the value per ton for all potash produced and saved which shall yield not less than \$0.10 per ton.
4. 5% of all lignite produced and saved.
5. 5% of the value per ton on a dry salt basis for all salt produced and saved which shall yield not less than \$0.10 per ton.
6. 25% of all other minerals produced and saved and subject to all provisions noted in the Plaquemines Parish Government mineral lease form.

Applicant: Allen & Kirmse, Ltd. to Agency and by Resolution from the Jefferson Parish Government and the Plaquemines Parish Government authorizing the Mineral Board to act in its behalf.

Bidder	Cash Payment	Price / Acre	Rental	Oil	Gas	Other



**TR 34392**  
**106.811 ± ACS.**  
**APR., 2002**





**TRACT 34393 - Jefferson Parish, Louisiana**

All of the lands now or formerly constituting the beds and bottoms of all water bodies of every nature and description and all islands and other lands formed by accretion or reliction, except tax lands, owned by and not under mineral lease from the State of Louisiana on April 10, 2002, situated in Jefferson Parish, Louisiana, within the following described boundaries: Beginning at a point having Coordinates of X = 2,428,230.30 and Y = 249,558.55; thence North 50 degrees 02 minutes 01 seconds East 3,126.41 feet to a Southeast corner of State Lease No. 16457 having Coordinates of X = 2,430,626.45 and Y = 251,566.77; thence on the South boundary and an East projection thereof of said State Lease No. 16457 the following courses: North 50 degrees 02 minutes 01 seconds East 490.52 feet and East 2,200.00 feet to a point having Coordinates of X = 2,433,202.39 and Y = 251,881.85; thence South 4,223.30 feet to a point having Coordinates of X = 2,433,202.39 and Y = 247,658.55; thence West 4,972.09 feet to a point having Coordinates of X = 2,428,230.30 and Y = 247,658.55; thence North 1,900.00 feet to the point of beginning, **LESS AND EXCEPT** that portion of State Lease No. 2084, as amended, and State Lease No. 356 that lies within the above described tract, containing approximately **211 acres**, as shown outlined on a plat on file in the Office of Mineral Resources, Department of Natural Resources, as provided by the applicant. All bearings, distances and coordinates are based on Louisiana Coordinate System of 1927 (South Zone).

NOTE: The above description of the tract nominated for lease has been provided exclusively by the party nominating the tract for lease. The Louisiana State Mineral Board makes no representation as to the accuracy of the description of the nominated tract or its suitability for lease. The Louisiana State Mineral Board has made no inspection of the nominated tract for the existence of conflicting leases, operating agreements, private claims or other existing or future obligations or conditions which may affect all or any portion of the nominated tract or its suitability for lease.

Maps depicting the nominated tract, containing the bearings, distances and coordinates of the nominated tract based on the Louisiana Coordinate System of 1927, North or South Zone, as applicable, are available for public inspection and review at the offices of the Louisiana State Mineral Board from 10:00 a.m. to 3:00 p.m. Monday - Friday.

In the event of conflict between the description of the nominated tract set forth above and the description of the nominated property as contained on the maps maintained at the offices of the Louisiana State Mineral Board, the Louisiana State Mineral Board maps shall prevail and shall provide the final property description of the lease to be awarded of the nominated tract.

Any mineral lease of the nominated tract by the Louisiana State Mineral Board shall be without warranty of any kind, either express, implied, or statutory, including, but not limited to, the implied warranties or merchantability and fitness for a particular purpose. Should the mineral lease of the nominated tract awarded by the Louisiana State Mineral Board be subsequently modified, cancelled or abrogated due to the existence of

conflicting leases, operating agreements, private claims or other existing of future obligations or conditions which may affect all or any portion of the leased tract, it shall not relieve the Lessee of the obligation to pay any bonus due thereon to the Louisiana State Mineral Board, nor shall the Louisiana State Mineral Board be obligated to refund any consideration paid by the Lessee prior to such modification, cancellation, or abrogation, including, but not limited to, bonuses, rents and royalties.

NOTE: The above tract is located in or near an oyster restricted area and all operations in such area must be conducted in strict conformity with the stipulations and/or regulations of the Louisiana Department of Wildlife and Fisheries.

NOTE: The State of Louisiana does hereby reserve, and this lease shall be subject to, the imprescriptible right of surface use in the nature of a servitude in favor of the Department of Natural Resources, including its Offices and Commissions, for the sole purpose of implementing, constructing, servicing and maintaining approved coastal zone management and/or restoration projects. Utilization of any and all rights derived under this lease by the mineral lessee, its agents, successors or assigns, shall not interfere with nor hinder the reasonable surface use by the Department of Natural Resources, its Offices or Commissions, as hereinabove reserved.

Applicant: Doyle Land Services, Inc.

Bidder	Cash Payment	Price / Acre	Rental	Oil	Gas	Other

R 24 E

146

Bassa Bassa

Lights

BASSA BASSA BAY

11

BASSA BASSA BAY

WATERWAY

Platform

SL 16457

Pelican Point

T 20 S

TR 34393  
211 ± ACS.  
APR., 2002

P. O. B.  
X=2,428,230.30  
Y=249,558.55

Barataria Bay

BARATARIA BAY

SL 356,  
As Amended

WEST CHAMPAGNE BAY

BASSA

EAST CHAMPAGNE BAY

SL 2084

BAY

GAS FIELD Platform

+ Mile 5

ISLAND

OIL AND

YND

GAS

NAD 27 LAMBERT LA. SOUTH ZONE

Jefferson Parish, Louisiana

2000' 0' 2000'