

**TRACT 34389 - STATE AGENCY - Ouachita Parish, Louisiana**

A certain tract of land belonging to and not under mineral lease from the Ouachita Parish Police Jury, on April 10, 2002, being more fully described as follows: All streets, roads, alleys and other easements belonging to Ouachita Parish by dedication, or otherwise, located in Section 4, Township 17 North, Range 3 East, Ouachita Parish, Louisiana, excluding beds and bottoms of all navigable waters, containing approximately **107.012 acres**, as shown outlined on a plat on file in the Office of Mineral Resources, Department of Natural Resources, as provided by the applicant.

NOTE: The above description of the tract nominated for lease has been provided exclusively by the party nominating the tract for lease. The Louisiana State Mineral Board makes no representation as to the accuracy of the description of the nominated tract or its suitability for lease. The Louisiana State Mineral Board has made no inspection of the nominated tract for the existence of conflicting leases, operating agreements, private claims or other existing or future obligations or conditions which may affect all or any portion of the nominated tract or its suitability for lease.

Maps depicting the nominated tract, containing the bearings, distances and coordinates of the nominated tract based on the Louisiana Coordinate System of 1927, North or South Zone, as applicable, are available for public inspection and review at the offices of the Louisiana State Mineral Board from 10:00 a.m. to 3:00 p.m. Monday - Friday.

In the event of conflict between the description of the nominated tract set forth above and the description of the nominated property as contained on the maps maintained at the offices of the Louisiana State Mineral Board, the Louisiana State Mineral Board maps shall prevail and shall provide the final property description of the lease to be awarded of the nominated tract.

Any mineral lease of the nominated tract by the Louisiana State Mineral Board shall be without warranty of any kind, either express, implied, or statutory, including, but not limited to, the implied warranties or merchantability and fitness for a particular purpose. Should the mineral lease of the nominated tract awarded by the Louisiana State Mineral Board be subsequently modified, cancelled or abrogated due to the existence of conflicting leases, operating agreements, private claims or other existing of future obligations or conditions which may affect all or any portion of the leased tract, it shall not relieve the Lessee of the obligation to pay any bonus due thereon to the Louisiana State Mineral Board, nor shall the Louisiana State Mineral Board be obligated to refund any consideration paid by the Lessee prior to such modification, cancellation, or abrogation, including, but not limited to, bonuses, rents and royalties.

NOTE: "Lessee agrees not to erect any derrick, tank, warehouse or other equipment or structure on the leased premises nor shall lessee interfere, in any manner, with lessor's use of the property. Lessee shall have, however, the complete right to drill for, produce, extract and recover the minerals in and beneath said land by drilling or other operations

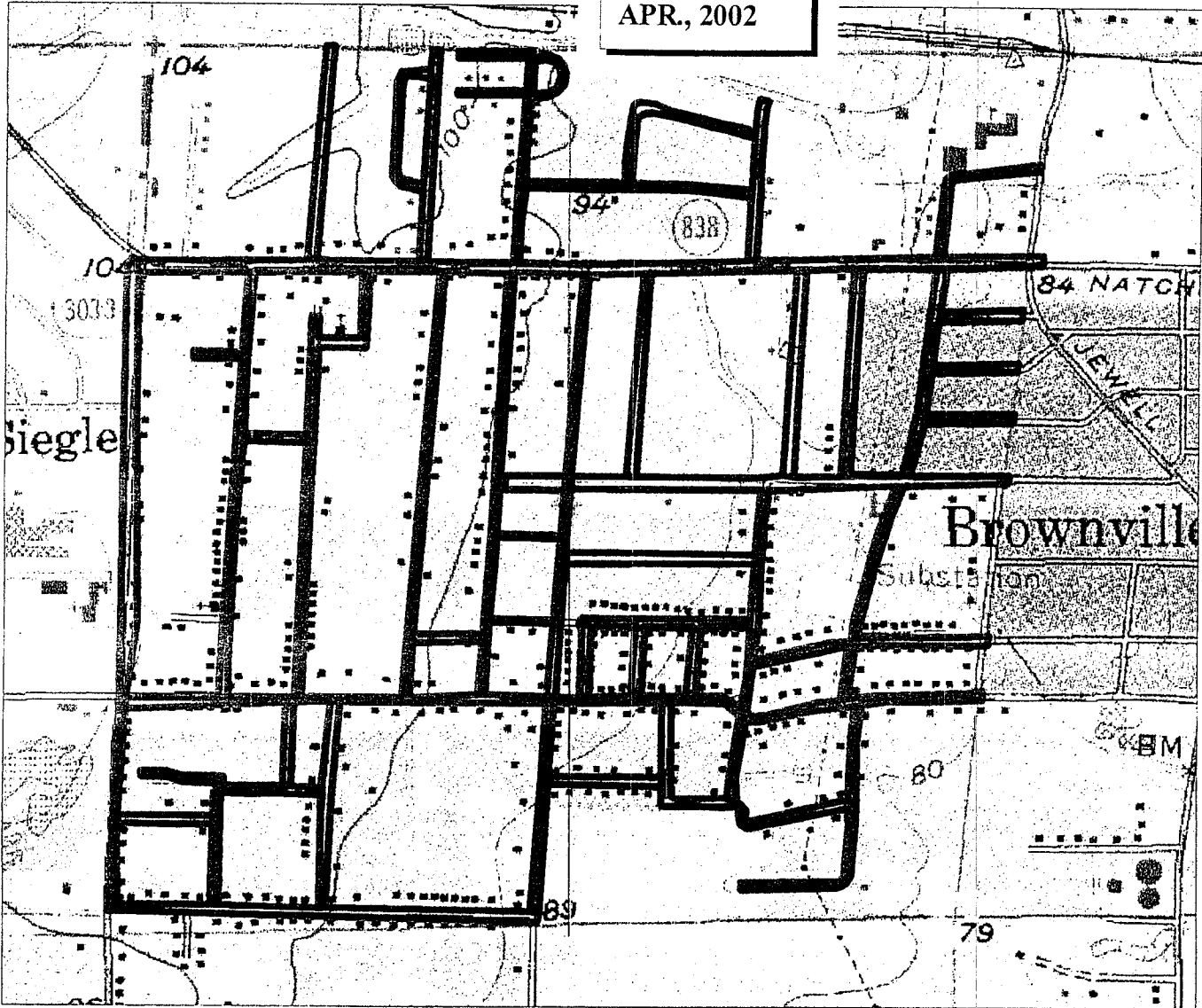
conducted from the surface of other lands or by the pooling or unitization of the leased premises with other land, lease or leases in the area."

Applicant: Brammer Engineering, Inc. to Agency and by Resolution from the Ouachita Parish Police Jury authorizing the Mineral Board to act in its behalf.

Bidder	Cash Payment	Price / Acre	Rental	Oil	Gas	Other

TR 34389  
107.012 ± ACS.  
APR., 2002

133



**MONROE PROSPECT**  
**Ouachita Parish, LA**  
**T17N R3E, Sec. 4**



**Ouachita Parish Roads:**  
**Approx. Net Acres=107.012**  
**SCALE:1"-1,000'**

**TRACT 34390 - STATE AGENCY - Vermilion Parish, Louisiana**

A certain tract of land belonging to and not under mineral lease from the Vermilion Parish Consolidated Gravity Drainage District No. 1, on April 10, 2002, being more fully described as follows: Section 55, Township 11 South, Range 4 East, (being part of a larger tract of land) Vermilion Parish, Louisiana, and also being identified as tract 4 of the Stone Petroleum Corporation CAM 1 RE SU A Greene No. 2, Order No. 902-A-8, dated October 22, 1984, excluding beds and bottoms of all navigable waters, containing approximately 2.14 acres, as shown outlined on a plat on file in the Office of Mineral Resources, Department of Natural Resources, as provided by the applicant. All bearings, distances and coordinates are based on Louisiana Coordinate System of 1927 (South Zone).

NOTE: The above description of the tract nominated for lease has been provided exclusively by the party nominating the tract for lease. The Louisiana State Mineral Board makes no representation as to the accuracy of the description of the nominated tract or its suitability for lease. The Louisiana State Mineral Board has made no inspection of the nominated tract for the existence of conflicting leases, operating agreements, private claims or other existing or future obligations or conditions which may affect all or any portion of the nominated tract or its suitability for lease.

Maps depicting the nominated tract, containing the bearings, distances and coordinates of the nominated tract based on the Louisiana Coordinate System of 1927, North or South Zone, as applicable, are available for public inspection and review at the offices of the Louisiana State Mineral Board from 10:00 a.m. to 3:00 p.m. Monday - Friday.

In the event of conflict between the description of the nominated tract set forth above and the description of the nominated property as contained on the maps maintained at the offices of the Louisiana State Mineral Board, the Louisiana State Mineral Board maps shall prevail and shall provide the final property description of the lease to be awarded of the nominated tract.

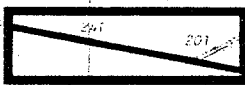
Any mineral lease of the nominated tract by the Louisiana State Mineral Board shall be without warranty of any kind, either express, implied, or statutory, including, but not limited to, the implied warranties or merchantability and fitness for a particular purpose. Should the mineral lease of the nominated tract awarded by the Louisiana State Mineral Board be subsequently modified, cancelled or abrogated due to the existence of conflicting leases, operating agreements, private claims or other existing of future obligations or conditions which may affect all or any portion of the leased tract, it shall not relieve the Lessee of the obligation to pay any bonus due thereon to the Louisiana State Mineral Board, nor shall the Louisiana State Mineral Board be obligated to refund any consideration paid by the Lessee prior to such modification, cancellation, or abrogation, including, but not limited to, bonuses, rents and royalties.

Applicant: Emile Fontenot Oil and Gas, L.L.C. to Agency and by Resolution from the Vermilion Parish Consolidated Gravity Drainage District No. 1 authorizing the Mineral Board to act in its behalf.

Bidder	Cash Payment	Price / Acre	Rental	Oil	Gas	Other

T11S-R4E

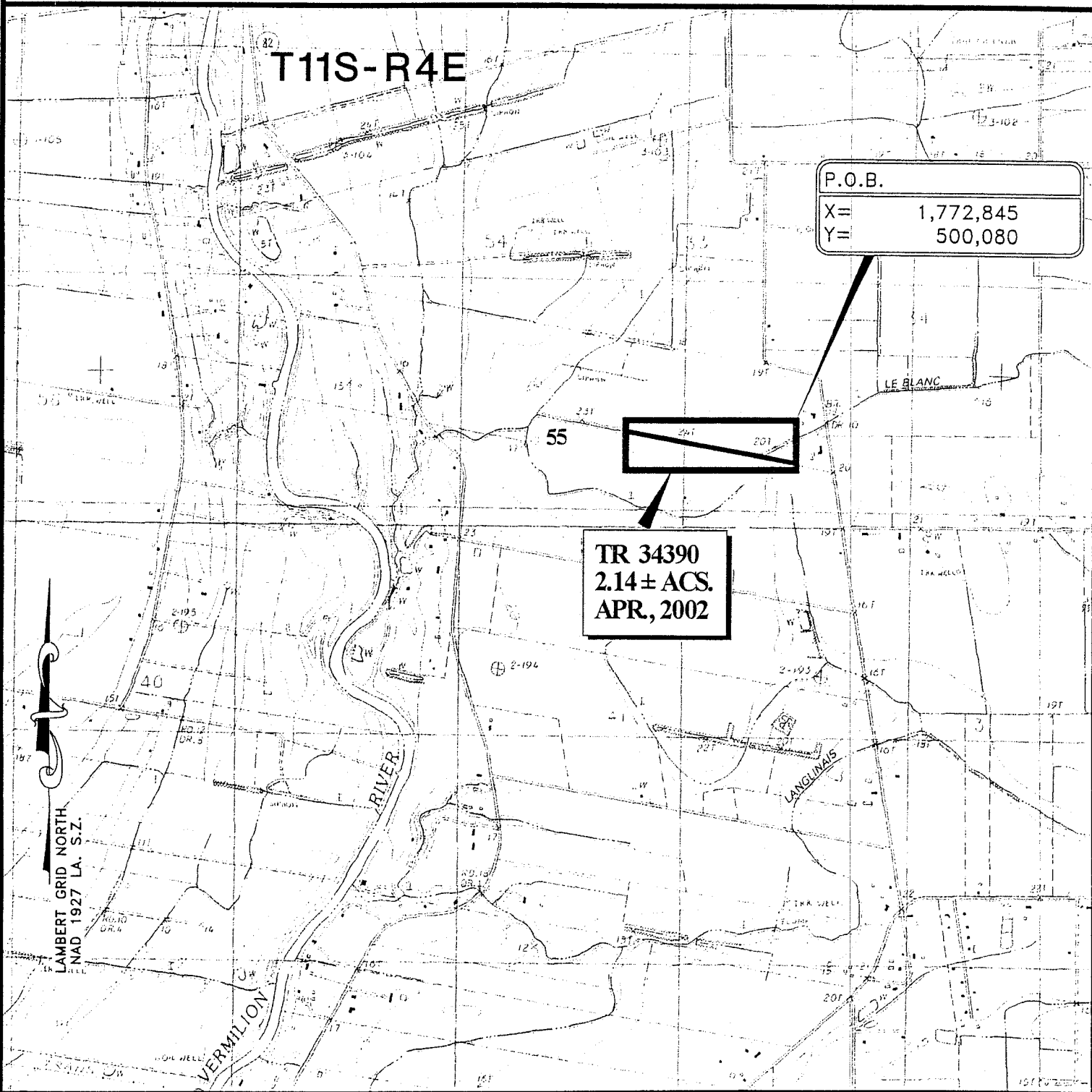
P.O.B.	
X=	1,772,845
Y=	500,080



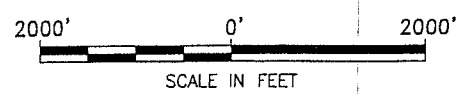
TR 34390
2.14 ± ACS.
APR, 2002



LAMBERT GRID NORTH  
NAD 1927 LA. S.Z.



VERMILION PARISH, LOUISIANA



**TRACT 34391 - STATE AGENCY - Lafourche Parish, Louisiana**

The State Mineral Board acting on behalf of the Lafourche Parish School Board, pursuant to Resolution adopted by that body and in accordance with Louisiana Revised Statutes 30:121-136 and 151-156, as amended, and Article 12, Section 18 of the Louisiana Constitution of 1921, as amended, which by Section 16 (A) 9, and 16 (B) of Article XIV of the 1974 Constitution is continued as a statute subject to arrangement in proper statutory form or modification provided by law, advertises the following described lands not under mineral lease on April 10, 2002: All of Section 16, Township 17 South, Range 22 East, Lafourche Parish, Louisiana, excluding beds and bottoms of all navigable waters located in said section, containing approximately 640.00 acres, as shown outlined on a plat on file in the Office of Mineral Resources, Department of Natural Resources, as provided by the applicant. All bearings, distances and coordinates are based on Louisiana Coordinate System of 1927 (South Zone).

NOTE: The above description of the tract nominated for lease has been provided exclusively by the party nominating the tract for lease. The Louisiana State Mineral Board makes no representation as to the accuracy of the description of the nominated tract or its suitability for lease. The Louisiana State Mineral Board has made no inspection of the nominated tract for the existence of conflicting leases, operating agreements, private claims or other existing or future obligations or conditions which may affect all or any portion of the nominated tract or its suitability for lease.

Maps depicting the nominated tract, containing the bearings, distances and coordinates of the nominated tract based on the Louisiana Coordinate System of 1927, North or South Zone, as applicable, are available for public inspection and review at the offices of the Louisiana State Mineral Board from 10:00 a.m. to 3:00 p.m. Monday - Friday.

In the event of conflict between the description of the nominated tract set forth above and the description of the nominated property as contained on the maps maintained at the offices of the Louisiana State Mineral Board, the Louisiana State Mineral Board maps shall prevail and shall provide the final property description of the lease to be awarded of the nominated tract.

Any mineral lease of the nominated tract by the Louisiana State Mineral Board shall be without warranty of any kind, either express, implied, or statutory, including, but not limited to, the implied warranties or merchantability and fitness for a particular purpose. Should the mineral lease of the nominated tract awarded by the Louisiana State Mineral Board be subsequently modified, cancelled or abrogated due to the existence of conflicting leases, operating agreements, private claims or other existing of future obligations or conditions which may affect all or any portion of the leased tract, it shall not relieve the Lessee of the obligation to pay any bonus due thereon to the Louisiana State Mineral Board, nor shall the Louisiana State Mineral Board be obligated to refund any consideration paid by the Lessee prior to such modification, cancellation, or abrogation, including, but not limited to, bonuses, rents and royalties.

NOTE: Lessor will accept not less than one-fourth royalties on all minerals.

NOTE: Lessor will require all royalties to be paid on "current market value" for all hydrocarbons.

NOTE: The Lessee shall conduct its operations in such a manner as to reasonably minimize any interference with or disruption of Lessor's use of the surface of the leased property or its use by Lessor's Lessees of hunting, trapping and/or pasturage rights.

NOTE: The State of Louisiana does hereby reserve, and this lease shall be subject to, the imprescriptible right of surface use in the nature of a servitude in favor of the Department of Natural Resources, including its Offices and Commissions, for the sole purpose of implementing, constructing, servicing and maintaining approved coastal zone management and/or restoration projects. Utilization of any and all rights derived under this lease by the mineral lessee, its agents, successors or assigns, shall not interfere with nor hinder the reasonable surface use by the Department of Natural Resources, its Offices or Commissions, as hereinabove reserved.

Applicant: Mark Mitchell, Sr. to Agency and by Resolution from the Lafourche Parish School Board authorizing the Mineral Board to act in its behalf.

Bidder	Cash Payment	Price / Acre	Rental	Oil	Gas	Other