

P.O.B.  
 X=2,325,655.67  
 Y=477,074.30

ST. CHARLES & JEFFERSON  
 PARISH  
 INLAND TRACT  
 SCALE: 1"=3000'

TR 34373  
 1,363.32 ± ACS.  
 APR, 2002

X=2,325,655.67  
 Y=459,261.76

X=2,331,643.73  
 Y=467,975.82

X=2,338,324.19  
 Y=467,975.82

X=2,338,324.19  
 Y=467,975.82

X=2,343,633.81  
 Y=470,739.40

X=2,331,643.73  
 Y=459,261.76

T 13 S  
 R 21 E

T 12 S  
 R 9 E

KENNER



**TRACT 34374 - Jefferson Parish, Louisiana**

All of the lands now or formerly constituting the beds and bottoms of all water bodies of every nature and description and all islands and other lands formed by accretion or reliction, except tax lands, owned by and not under mineral lease from the State of Louisiana on April 10, 2002, situated in Jefferson Parish, Louisiana, within the following described boundaries: Beginning at a point having Coordinates of X = 2,343,633.81 and Y = 477,074.30; thence East 10,651.69 feet to a point having Coordinates of X = 2,354,285.50 and Y = 477,074.30; thence South 8,873.27 feet to a point having Coordinates of X = 2,354,285.50 and Y = 468,201.03; thence East 7,132.49 feet to point having Coordinates of X = 2,361,417.99 and Y = 468,201.03; thence South 11,697.47 feet to a point having Coordinates of X = 2,361,417.99 and Y = 456,503.56; thence West 13,045.44 feet to point having Coordinates of X = 2,348,372.55 and Y = 456,503.56; thence North 14,235.84 feet to a point having Coordinates of X = 2,348,372.55 and Y = 470,739.40; thence West 4,738.52 feet to a point having Coordinates of X = 2,343,634.03 and Y = 470,739.40; thence 6,334.90 to the point of beginning, containing approximately 1,377.95 acres, as shown outlined on a plat on file in the Office of Mineral Resources, Department of Natural Resources, as provided by the applicant. All bearings, distances and coordinates are based on Louisiana Coordinate System of 1927 (South Zone).

NOTE: The above description of the tract nominated for lease has been provided exclusively by the party nominating the tract for lease. The Louisiana State Mineral Board makes no representation as to the accuracy of the description of the nominated tract or its suitability for lease. The Louisiana State Mineral Board has made no inspection of the nominated tract for the existence of conflicting leases, operating agreements, private claims or other existing or future obligations or conditions which may affect all or any portion of the nominated tract or its suitability for lease.

Maps depicting the nominated tract, containing the bearings, distances and coordinates of the nominated tract based on the Louisiana Coordinate System of 1927, North or South Zone, as applicable, are available for public inspection and review at the offices of the Louisiana State Mineral Board from 10:00 a.m. to 3:00 p.m. Monday - Friday.

In the event of conflict between the description of the nominated tract set forth above and the description of the nominated property as contained on the maps maintained at the offices of the Louisiana State Mineral Board, the Louisiana State Mineral Board maps shall prevail and shall provide the final property description of the lease to be awarded of the nominated tract.

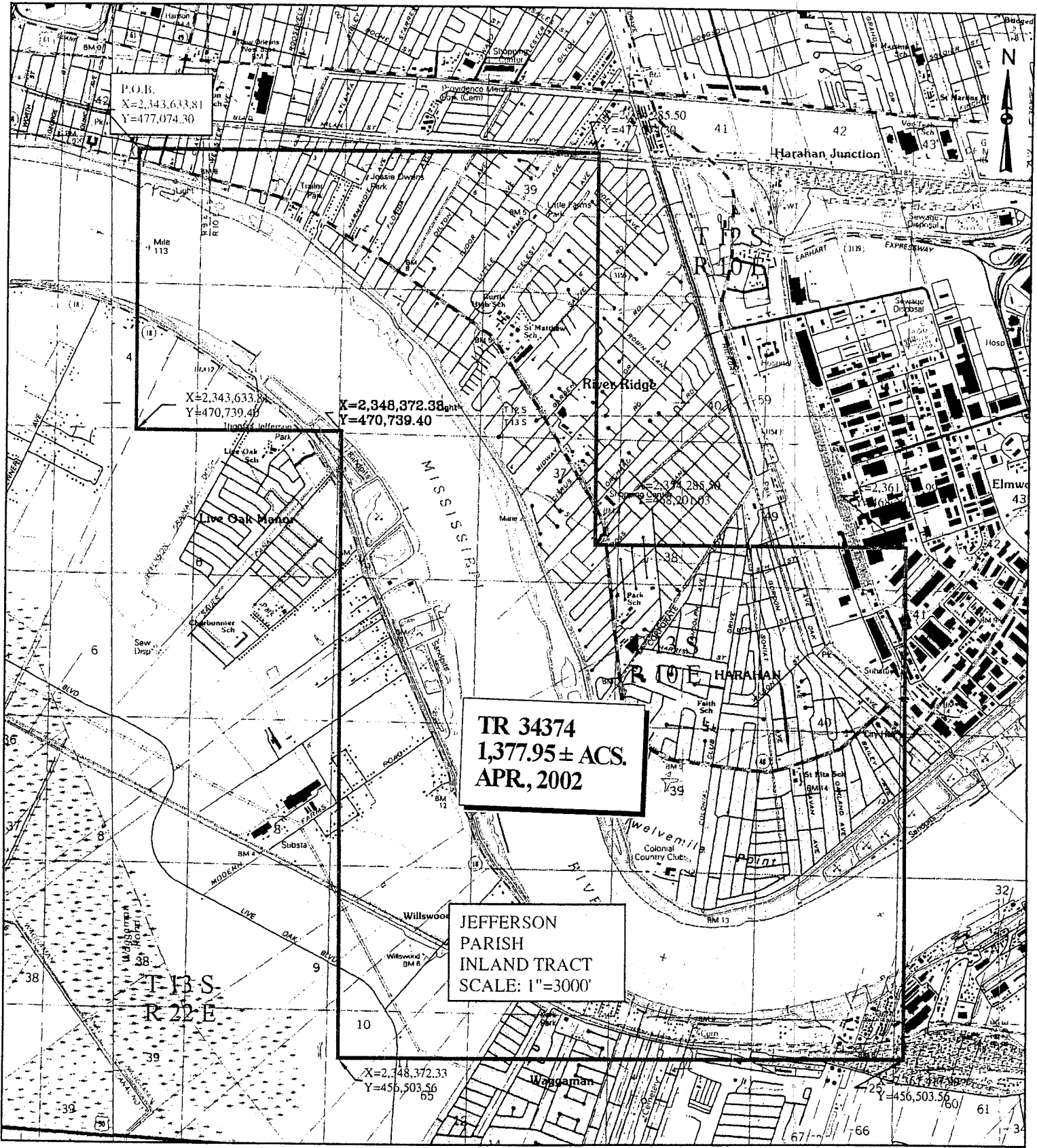
Any mineral lease of the nominated tract by the Louisiana State Mineral Board shall be without warranty of any kind, either express, implied, or statutory, including, but not limited to, the implied warranties or merchantability and fitness for a particular purpose. Should the mineral lease of the nominated tract awarded by the Louisiana State Mineral Board be subsequently modified, cancelled or abrogated due to the existence of conflicting leases, operating agreements, private claims or other existing

of future obligations or conditions which may affect all or any portion of the leased tract, it shall not relieve the Lessee of the obligation to pay any bonus due thereon to the Louisiana State Mineral Board, nor shall the Louisiana State Mineral Board be obligated to refund any consideration paid by the Lessee prior to such modification, cancellation, or abrogation, including, but not limited to, bonuses, rents and royalties.

NOTE: The State of Louisiana does hereby reserve, and this lease shall be subject to, the imprescriptible right of surface use in the nature of a servitude in favor of the Department of Natural Resources, including its Offices and Commissions, for the sole purpose of implementing, constructing, servicing and maintaining approved coastal zone management and/or restoration projects. Utilization of any and all rights derived under this lease by the mineral lessee, its agents, successors or assigns, shall not interfere with nor hinder the reasonable surface use by the Department of Natural Resources, its Offices or Commissions, as hereinabove reserved.

Applicant: Felice Exploration, LLC

Bidder	Cash Payment	Price / Acre	Rental	Oil	Gas	Other



P.O.B.  
 X=2,343,633.81  
 Y=477,074.30

X=2,343,633.81  
 Y=470,739.40

X=2,348,372.38  
 Y=470,739.40

X=2,348,285.50  
 Y=478,201.03

X=2,361,466.00  
 Y=476,466.00

**TR 34374**  
**1,377.95 ± ACS.**  
**APR, 2002**

**JEFFERSON**  
**PARISH**  
**INLAND TRACT**  
**SCALE: 1"=3000'**

X=2,348,372.33  
 Y=456,503.56

X=2,361,466.00  
 Y=456,503.56

T 18 S  
 R 22 E

**TRACT 34375 - Jefferson and St. Charles Parishes, Louisiana**

All of the lands now or formerly constituting the beds and bottoms of all water bodies of every nature and description and all islands and other lands formed by accretion or reliction, except tax lands, owned by and not under mineral lease from the State of Louisiana on April 10, 2002, situated in Jefferson and St. Charles Parishes, Louisiana, within the following described boundaries: Beginning at a point having Coordinates of X = 2,335,445.09 and Y = 453,638.62; thence East 12,927.24 feet to a point having Coordinates of X = 2,348,372.33 and Y = 453,638.62; thence South 10,820.60 feet to a point having Coordinates of X = 2,348,372.33 and Y = 442,818.02; thence East 4,875.38 feet to a point having Coordinates of X = 2,353,247.70 and Y = 442,818.02; thence South 2,536.76 feet to a point having Coordinates of X = 2,353,247.70 and Y = 440,281.25; thence South 64 degrees 00 minutes and 00 seconds West 10,590.24 feet to a point having Coordinates of X = 2,343,729.26 and Y = 435,638.80; thence North 09 degrees 48 minutes 15 seconds West 8,600.44 feet to a point having Coordinates of X = 2,342,264.76 and Y = 444,113.63; thence North 41 degrees 27 minutes 16 seconds West 8,132.56 feet to a point having Coordinates of X = 2,336,880.79 and Y = 450,208.84; thence North 22 degrees 42 minutes 51 seconds West 3,718.15 feet to the point of beginning, containing approximately 430.66 acres, as shown outlined on a plat on file in the Office of Mineral Resources, Department of Natural Resources, as provided by the applicant. All bearings, distances and coordinates are based on Louisiana Coordinate System of 1927 (South Zone).

NOTE: The above description of the tract nominated for lease has been provided exclusively by the party nominating the tract for lease. The Louisiana State Mineral Board makes no representation as to the accuracy of the description of the nominated tract or its suitability for lease. The Louisiana State Mineral Board has made no inspection of the nominated tract for the existence of conflicting leases, operating agreements, private claims or other existing or future obligations or conditions which may affect all or any portion of the nominated tract or its suitability for lease.

Maps depicting the nominated tract, containing the bearings, distances and coordinates of the nominated tract based on the Louisiana Coordinate System of 1927, North or South Zone, as applicable, are available for public inspection and review at the offices of the Louisiana State Mineral Board from 10:00 a.m. to 3:00 p.m. Monday - Friday.

In the event of conflict between the description of the nominated tract set forth above and the description of the nominated property as contained on the maps maintained at the offices of the Louisiana State Mineral Board, the Louisiana State Mineral Board maps shall prevail and shall provide the final property description of the lease to be awarded of the nominated tract.

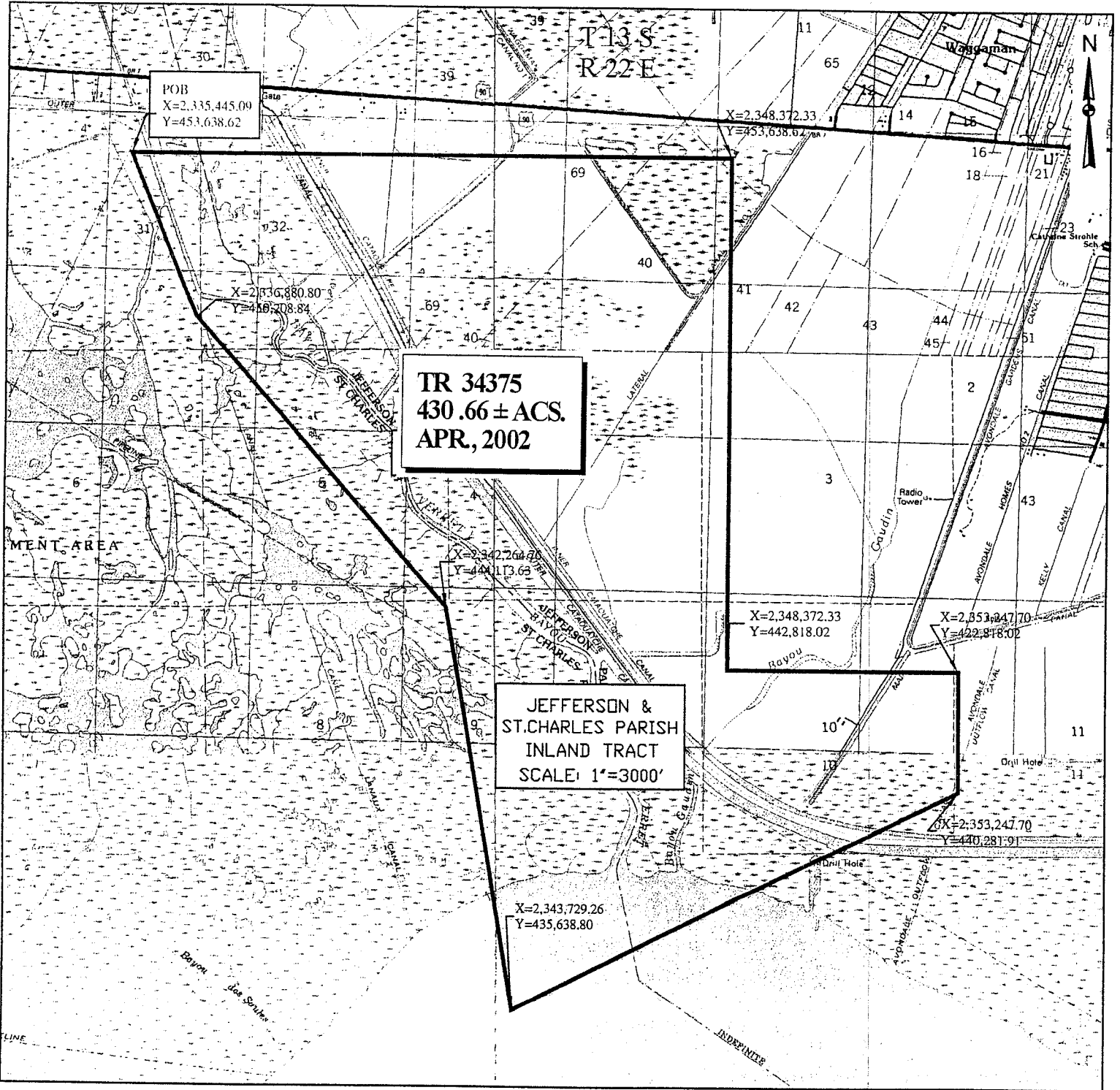
Any mineral lease of the nominated tract by the Louisiana State Mineral Board shall be without warranty of any kind, either express, implied, or statutory, including, but not limited to, the implied warranties or merchantability and fitness for a particular purpose. Should the mineral lease of the nominated tract awarded by the Louisiana State Mineral Board

be subsequently modified, cancelled or abrogated due to the existence of conflicting leases, operating agreements, private claims or other existing of future obligations or conditions which may affect all or any portion of the leased tract, it shall not relieve the Lessee of the obligation to pay any bonus due thereon to the Louisiana State Mineral Board, nor shall the Louisiana State Mineral Board be obligated to refund any consideration paid by the Lessee prior to such modification, cancellation, or abrogation, including, but not limited to, bonuses, rents and royalties.

NOTE: The State of Louisiana does hereby reserve, and this lease shall be subject to, the imprescriptible right of surface use in the nature of a servitude in favor of the Department of Natural Resources, including its Offices and Commissions, for the sole purpose of implementing, constructing, servicing and maintaining approved coastal zone management and/or restoration projects. Utilization of any and all rights derived under this lease by the mineral lessee, its agents, successors or assigns, shall not interfere with nor hinder the reasonable surface use by the Department of Natural Resources, its Offices or Commissions, as hereinabove reserved.

Applicant: Felice Exploration, LLC

Bidder	Cash Payment	Price / Acre	Rental	Oil	Gas	Other



POB  
 X=2,335,445.09  
 Y=453,638.62

X=2,348,372.33  
 Y=453,638.62

X=2,336,880.80  
 Y=456,208.84

**TR 34375**  
**430.66 ± ACS.**  
**APR, 2002**

X=2,342,764.85  
 Y=444,113.65

X=2,348,372.33  
 Y=442,818.02

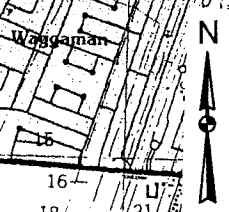
X=2,353,247.70  
 Y=422,818.02

**JEFFERSON &  
 ST. CHARLES PARISH  
 INLAND TRACT  
 SCALE: 1"=3000'**

X=2,353,247.70  
 Y=440,281.91

X=2,343,729.26  
 Y=435,638.80

MENT AREA



T13 S  
 R 22 E

Waggaman

23  
 Catherine Strohle Sch

Radio Tower

Drill Hole

Drill Hole

LINE

INDEFINITE

**TRACT 34376 - Jefferson and Orleans Parishes, Louisiana**

All of the lands now or formerly constituting the beds and bottoms of all water bodies of every nature and description and all islands and other lands formed by accretion or reliction, except tax lands, owned by and not under mineral lease from the State of Louisiana on April 10, 2002, situated in Jefferson and Orleans Parishes, Louisiana, within the following described boundaries: Beginning at a point having Lambert Coordinates of X = 2,366,061.59 and Y = 473,706.49; thence East 18,408.06 feet to a point having Coordinates of X = 2,384,469.65 and Y = 473,706.49; thence South 16,185.26 feet to a point having Coordinates of X = 2,384,469.65 and Y = 457,521.23; thence West 10,415.37 feet to a point having Coordinates of X = 2,374,054.28 and Y = 457,521.23; thence North 10,679.80 feet to a point having Coordinates of X = 2,374,054.28 and Y = 468,201.03; thence West 7,992.69 feet to a point having Coordinates of X = 2,366,061.59 and Y = 468,201.03; thence North 5,505.46 feet to the point of beginning, containing approximately 1,062.77 acres, as shown outlined on a plat on file in the Office of Mineral Resources, Department of Natural Resources, as provided by the applicant. All bearings, distances and coordinates are based on Louisiana Coordinate System of 1927 (South Zone).

NOTE: The above description of the tract nominated for lease has been provided exclusively by the party nominating the tract for lease. The Louisiana State Mineral Board makes no representation as to the accuracy of the description of the nominated tract or its suitability for lease. The Louisiana State Mineral Board has made no inspection of the nominated tract for the existence of conflicting leases, operating agreements, private claims or other existing or future obligations or conditions which may affect all or any portion of the nominated tract or its suitability for lease.

Maps depicting the nominated tract, containing the bearings, distances and coordinates of the nominated tract based on the Louisiana Coordinate System of 1927, North or South Zone, as applicable, are available for public inspection and review at the offices of the Louisiana State Mineral Board from 10:00 a.m. to 3:00 p.m. Monday - Friday.

In the event of conflict between the description of the nominated tract set forth above and the description of the nominated property as contained on the maps maintained at the offices of the Louisiana State Mineral Board, the Louisiana State Mineral Board maps shall prevail and shall provide the final property description of the lease to be awarded of the nominated tract.

Any mineral lease of the nominated tract by the Louisiana State Mineral Board shall be without warranty of any kind, either express, implied, or statutory, including, but not limited to, the implied warranties or merchantability and fitness for a particular purpose. Should the mineral lease of the nominated tract awarded by the Louisiana State Mineral Board be subsequently modified, cancelled or abrogated due to the existence of conflicting leases, operating agreements, private claims or other existing of future obligations or conditions which may affect all or any portion of the leased tract, it shall not relieve the Lessee of the obligation to pay